

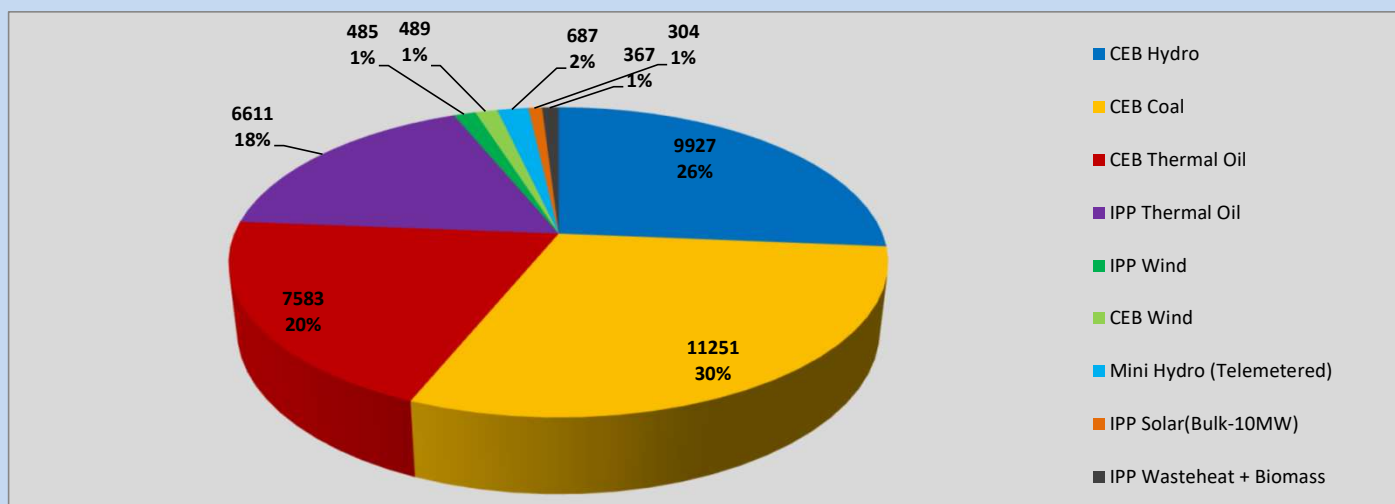
Generation and Reservoirs Statistics

April 11, 2023



PUBLIC UTILITIES COMMISSION OF SRI LANKA

Daily Generation Mix in MWh



Total Generation (Excluding estimated figures) =

37,704 MWh

Estimated figures of CEB generation report

Estimated unserved energy = 0.00 GWh
 Estimated Mini Hydro (Non telemetered) = 1693 MWh
 Estimated IPP Solar PV (Bulk 1-10MW) = 304 MWh
 Estimated Solar Roof Top PV = 1640 MWh

Cumulative Dispatch

Following data excludes the contribution from roof top solar, non telemetered solar and mini hydro plants

For Current Month

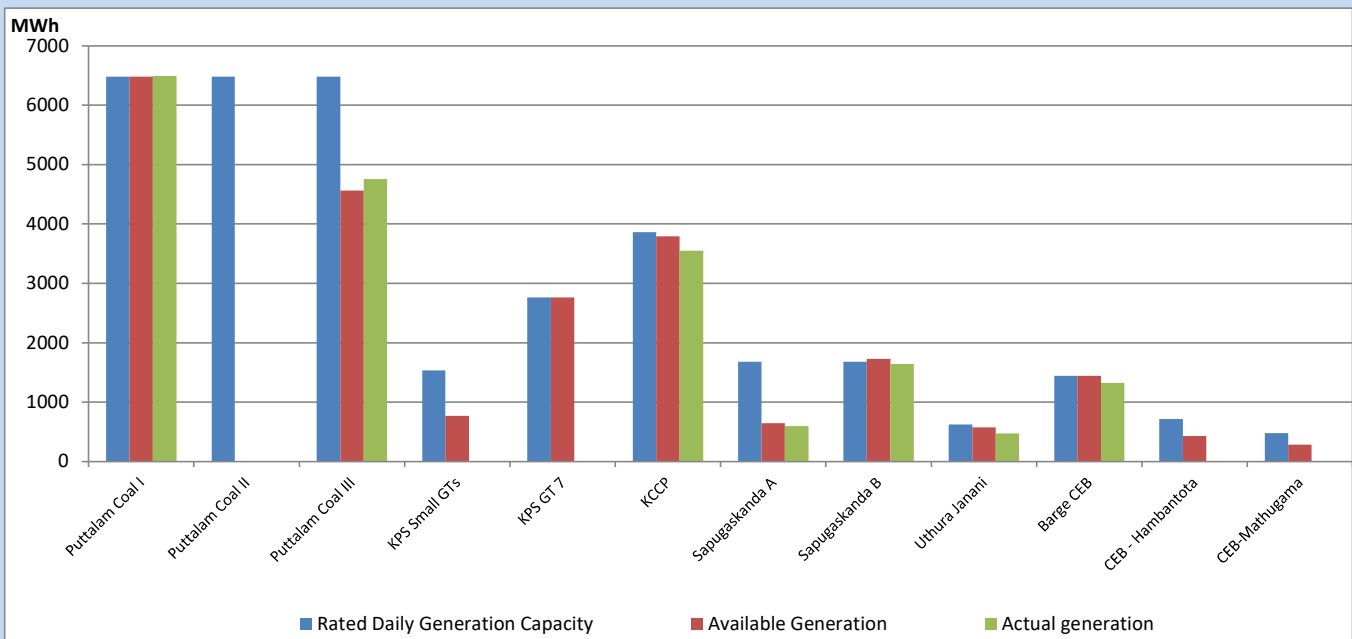
Category	Dispatch (GWh)	
CEB Hydro	132	31.03%
CEB Coal	136	31.90%
CEB Thermal Oil	69	16.21%
IPP Thermal	64	14.93%
SPP Wind	3	0.72%
CEB Wind	4	0.98%
Mini Hydro (Telemetered)	11	2.47%
IPP Solar(Bulk-10MW)	4	0.90%
IPP Wasteheat + BMP	4	0.86%
Total	426	

For Current Year

Category	Dispatch (GWh)	
CEB Hydro	1,053	27.42%
CEB Coal	1,658	43.17%
CEB Thermal Oil	539	14.03%
IPP Thermal	334	8.69%
SPP Wind	54	1.41%
CEB Wind	64	1.68%
Mini Hydro (Telemetered)	79	2.07%
IPP Solar(Bulk-10MW)	30	0.77%
IPP Wasteheat	30	0.78%
Total	3,842	

CEB owned Thermal Plant Dispatch

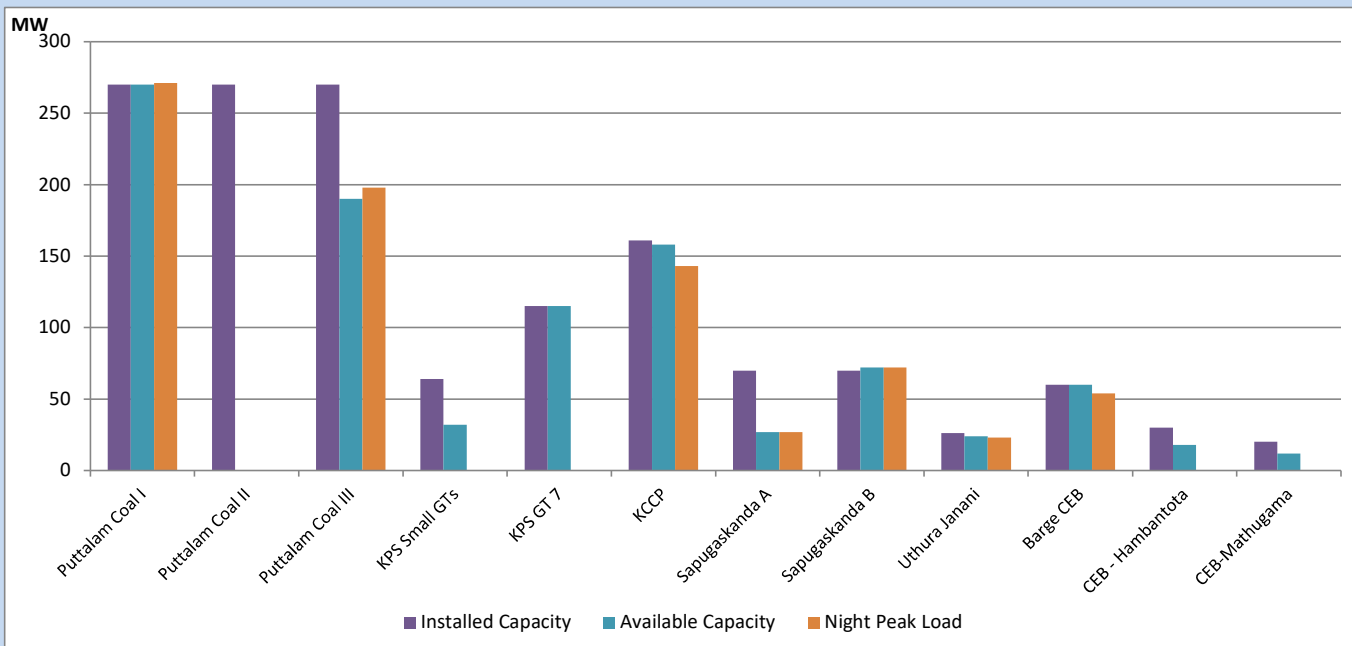
April 11, 2023



Available Generation is estimated based on plant availability at 6.00am on

April 12, 2023

CEB owned Thermal Plant Loading at the Night Peak

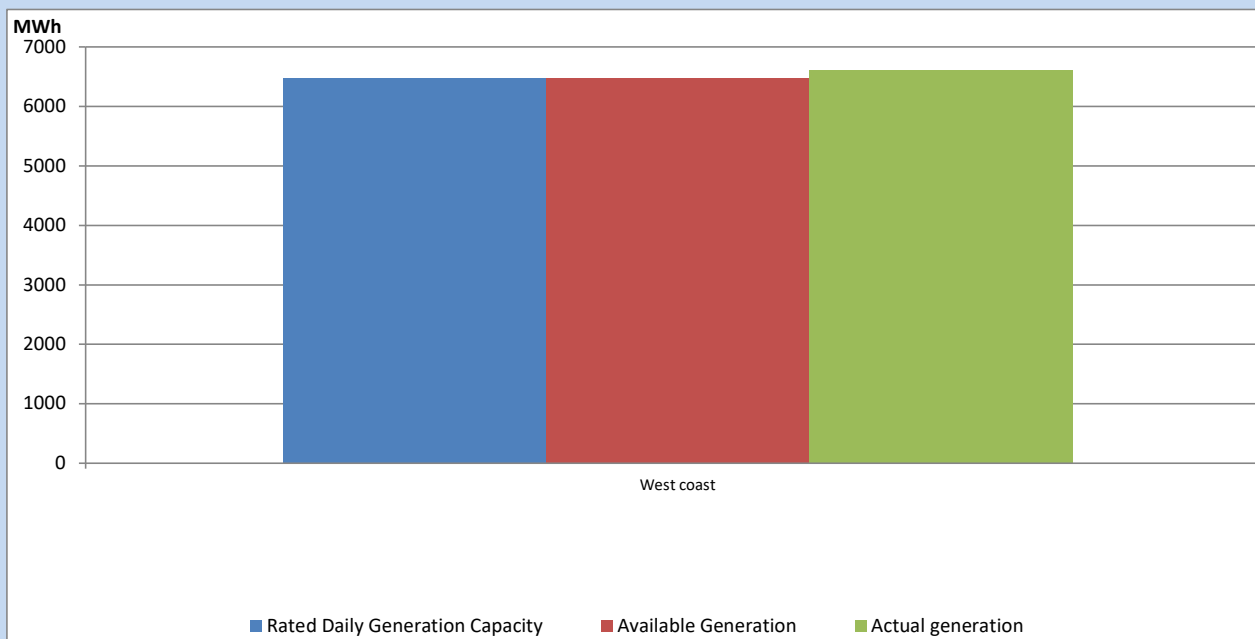


Note- Plant availability is recorded at 6.00 am on

April 12, 2023

IPP owned Thermal Plant Dispatch

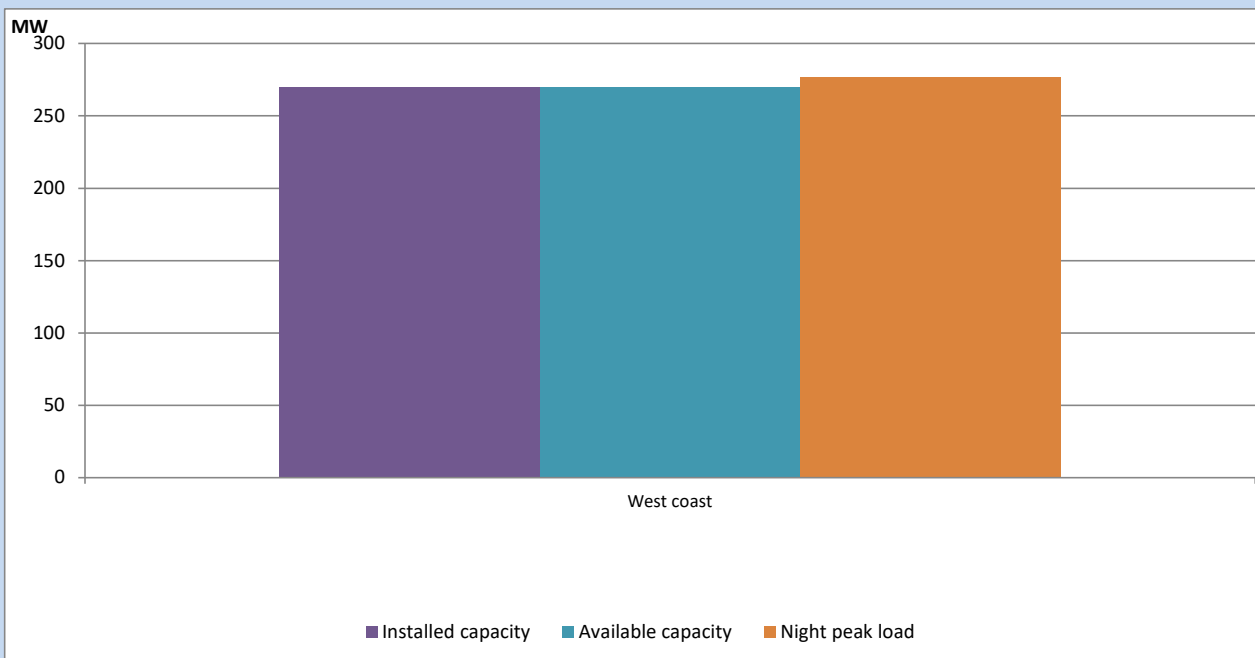
April 11, 2023



Available Generation is estimated based on plant availability at 6.00am on

April 12, 2023

IPP owned Thermal Plant Loading at the Night Peak

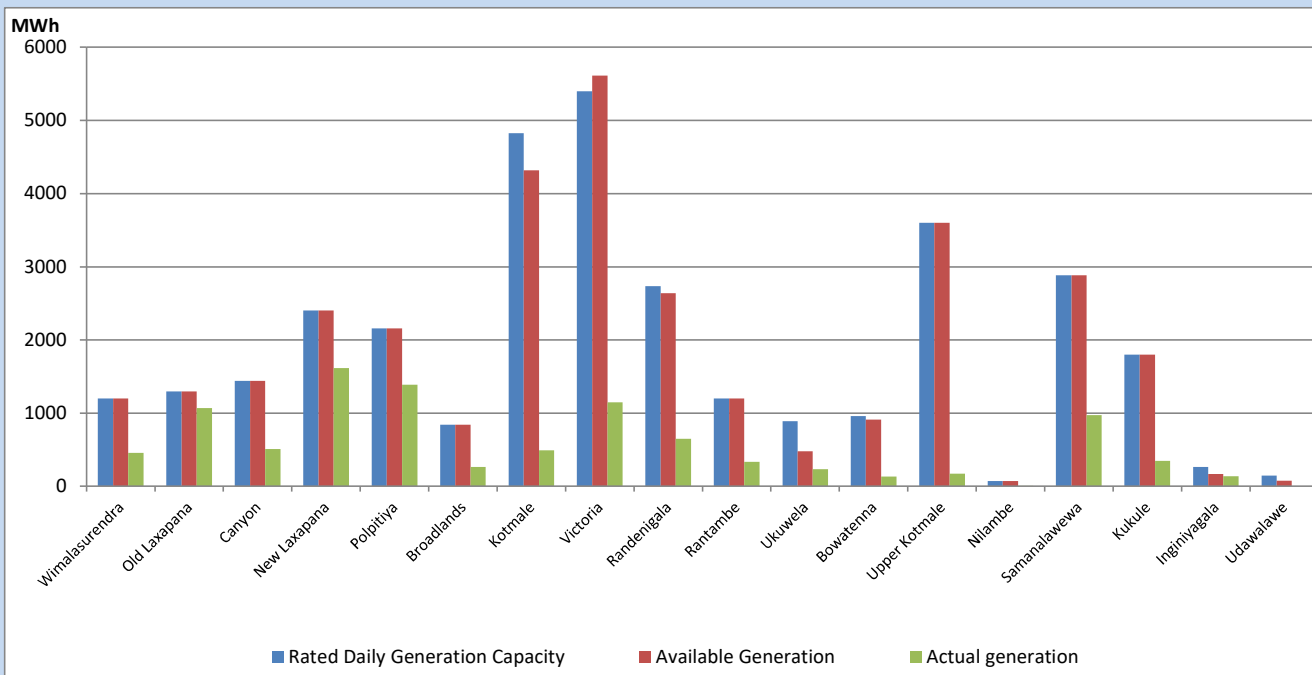


Note- Plant availability is recorded at 6.00 am on

April 12, 2023

Major Hydro Plant Dispatch

April 11, 2023

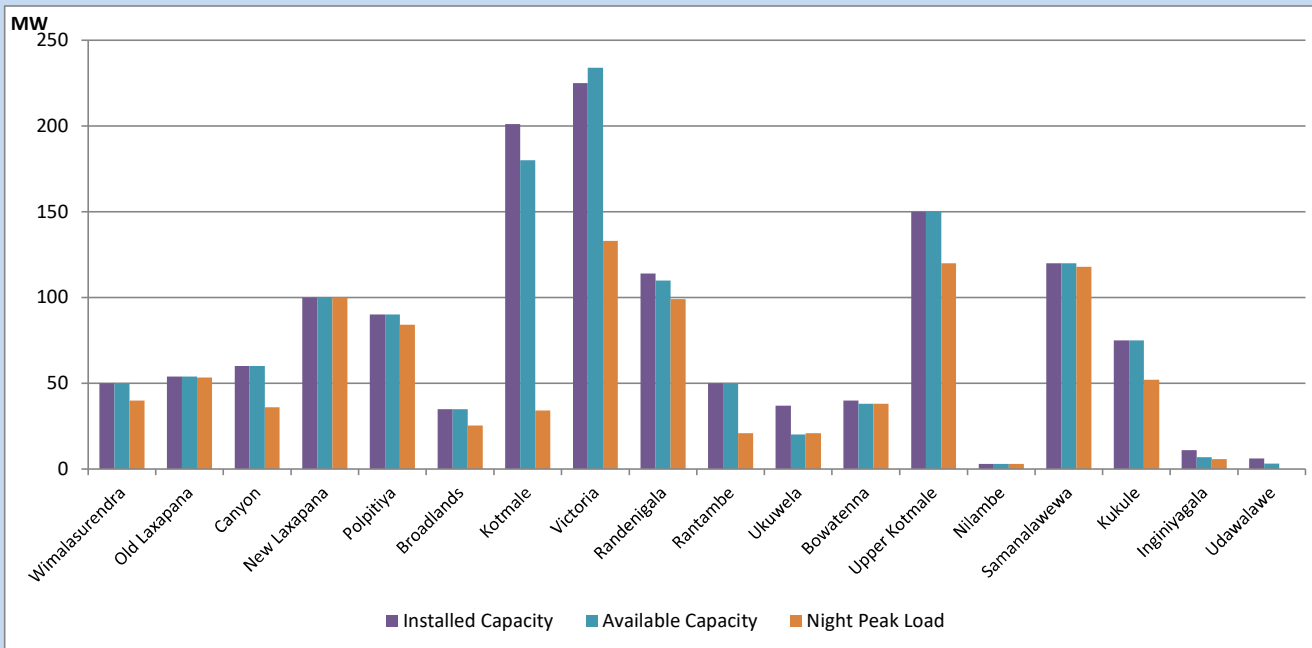


Available Generation is estimated based on plant availability at 6.00am on
Broadlands power plant is operating in the Commissioning Stage

April 12, 2023

Major Hydro Plant Loading at Night Peak

April 11, 2023



Note- Plant availability is recorded at 6.00 am on

April 12, 2023

Broadlands power plant is operating in the Commissioning Stage

Summary of Major Plant performance

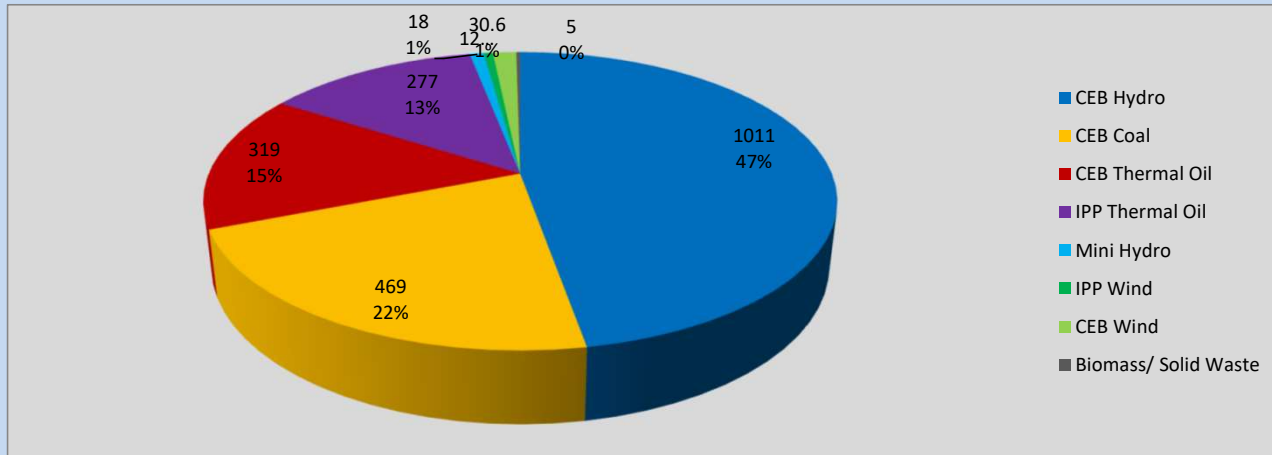
Plant	Installed Capacity	Plant Availability	Night peak Load	Plant Dispatch
	(MW)	(MW)	(MW)	(MWh)
Wimalasurendra	50	50	40	456
Old Laxapana	54	54	53	1,066
Canyon	60	60	36	507
New Laxapana	100	100	100	1,617
Polpitiya	90	90	84	1,388
Broadlands	35	35	25	263
Kotmale	201	180	34	490
Victoria	225	234	133	1,148
Randenigala	114	110	99	648
Rantambe	50	50	21	335
Ukuwela	37	20	21	233
Bowatenna	40	38	38	132
Upper Kotmale	150	150	120	174
Nilambe	3	3	3	7
Samanalawewa	120	120	118	976
Kukule	75	75	52	348
Inginiyagala	11	7	6	139
Udawalawe	6	3	0	0
Puttalam Coal I	270	270	271	6,494
Puttalam Coal II	270	0	0	0
Puttalam Coal III	270	190	198	4,757
KPS Small GTs	64	32	0	0
KPS GT 7	115	115	0	0
KCCP	161	158	143	3,549
Sapugaskanda A	70	27	27	600
Sapugaskanda B	70	72	72	1,641
Uthura Janani	26	24	23	472
Barge CEB	60	60	54	1,321
CEB-Hambantota	30	18	0	0
CEB-Mathugama	20	12	0	0
ACE Matara	24	0	0	0
Asia Power	50	0	0	0
Sojitz Kelanitissa	163	0	0	0
West Coast	270	270	277	6,611
Nothern Power	36	0	0	0
ACE Embilipitiya	93	0	0	0
Total	3,483	2,627	2,115	37,704

Plant availability is the availability recorded at 6 am on

April 12, 2023

Contribution to the Night Peak in MW

April 11, 2023

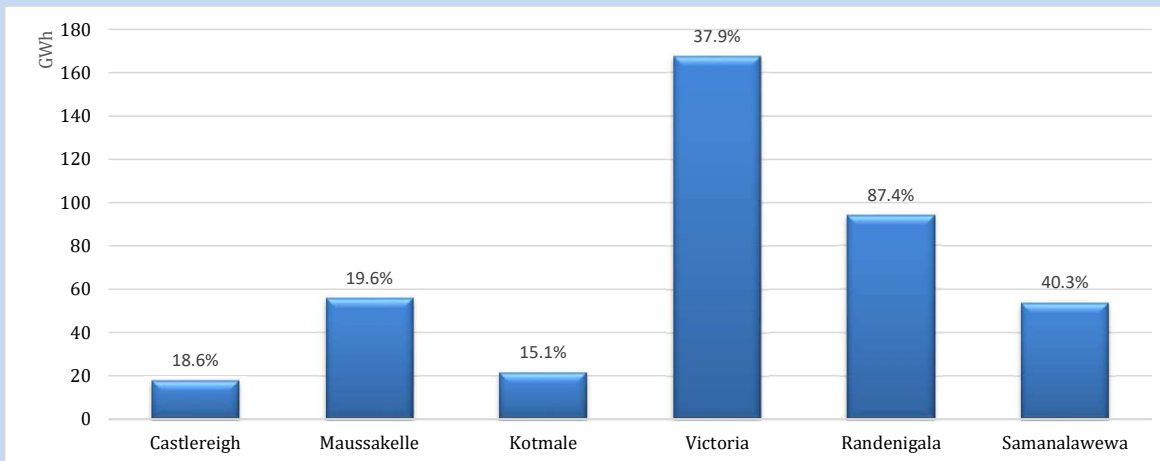


Night Peak*	2,142 MW
Day Peak	1,704 MW
Minimum Demand	1,179 MW

Above figures are excluding contribution from roof top solar, non telemetered solar and mini hydro plants

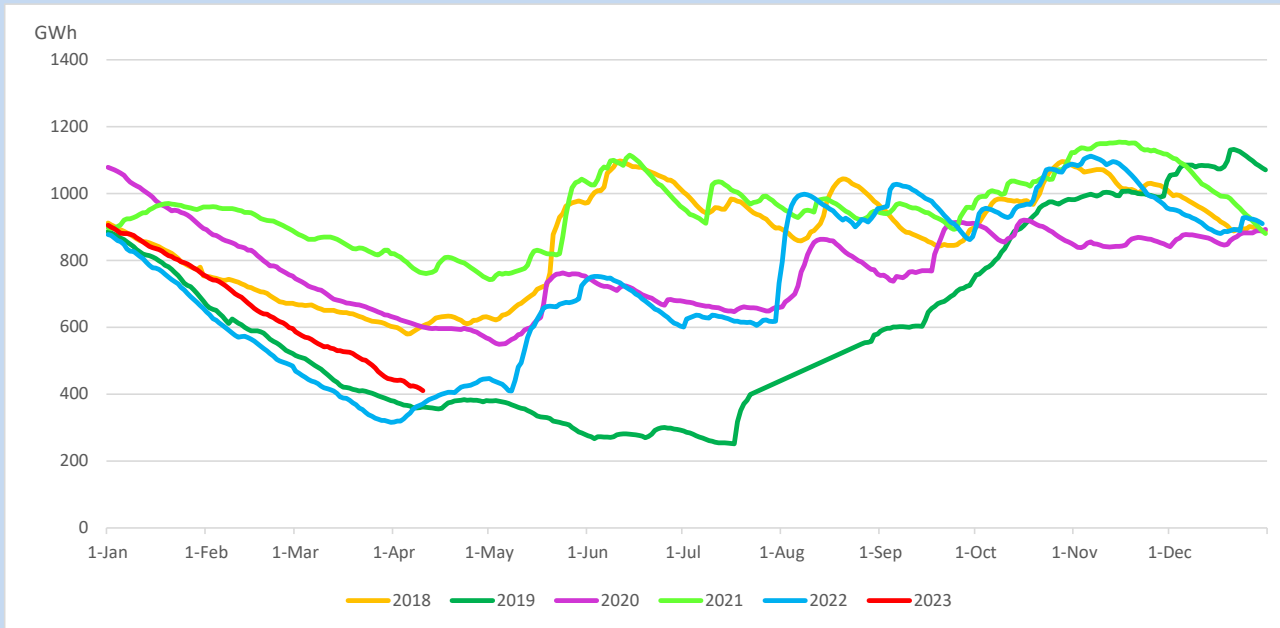
Reservoir Levels -

as at 06.00 Hr on April 12, 2023

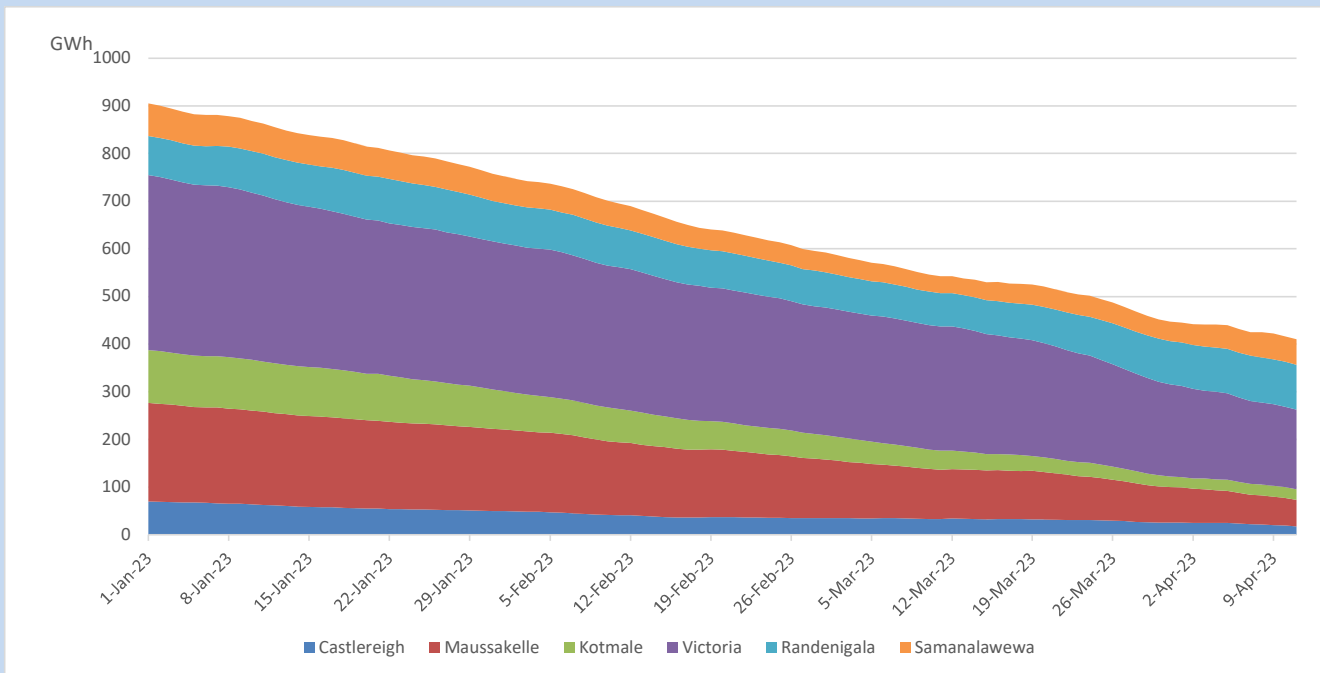


Total Reservoir Level	410.3 GWh
% of Total capacity	34.0%

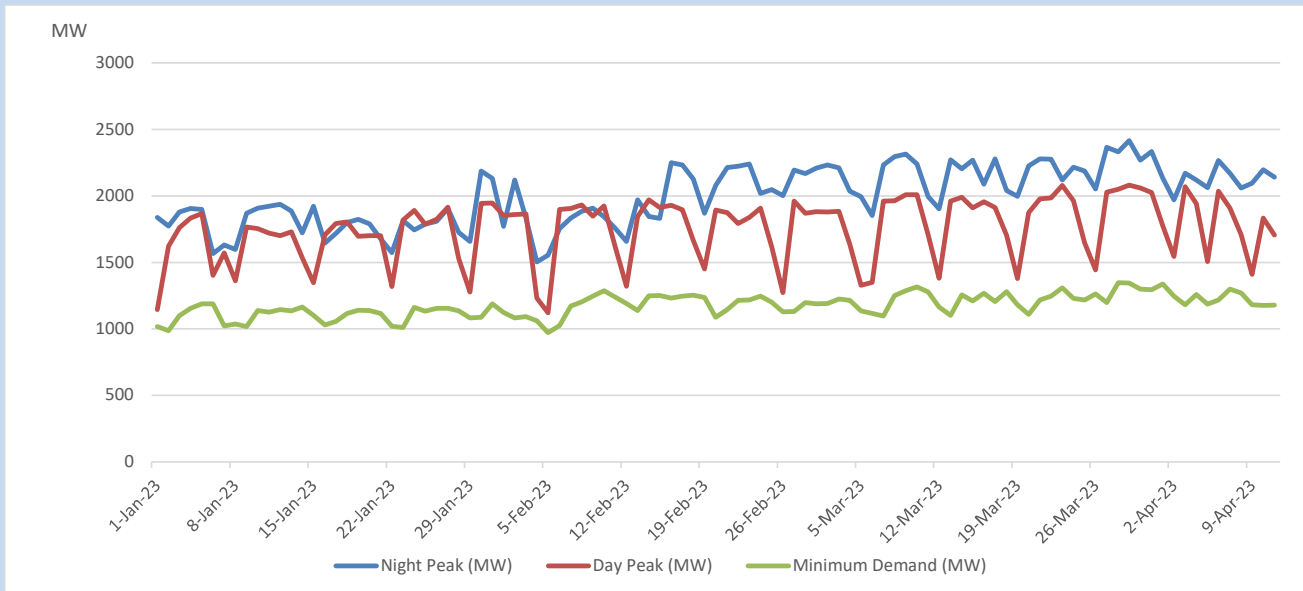
Comparison of Total Reservoir Storage Levels with Past Years



Variation of Major Hydro Reservoir Levels in the current year (GWh)



Variation of Demand during the current year

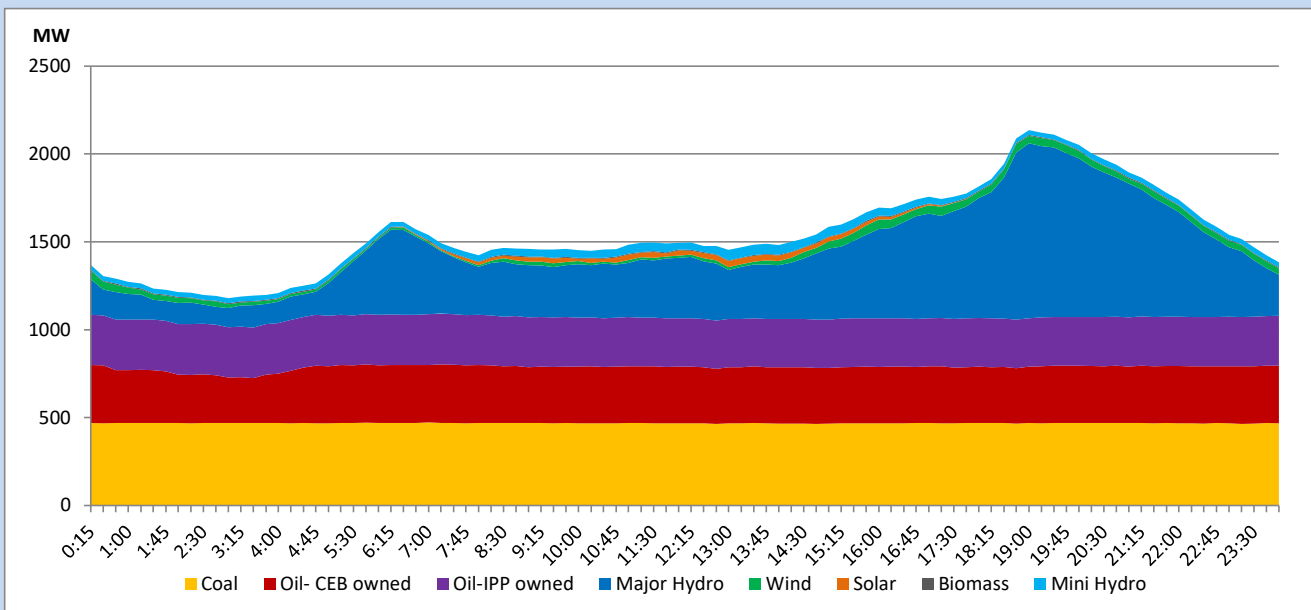


The above figures are excluding contribution from roof top solar, non telemetered solar and mini hydro plants

Daily Load Curve

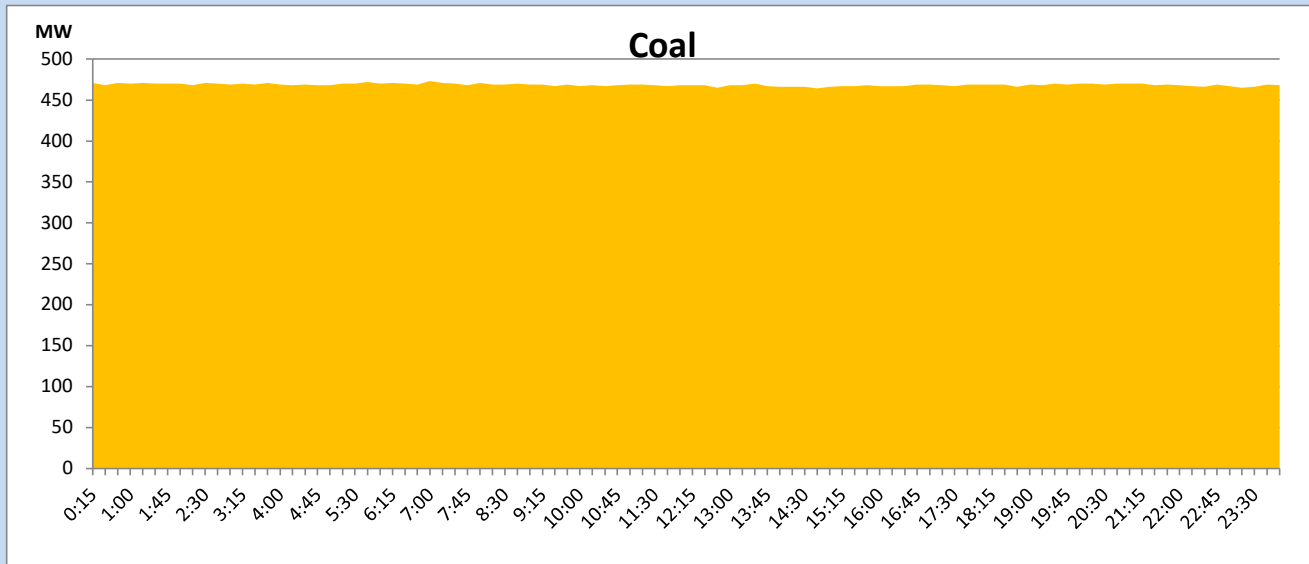
April 11, 2023

Solar and wind data is based on Telemetered Power Stations only



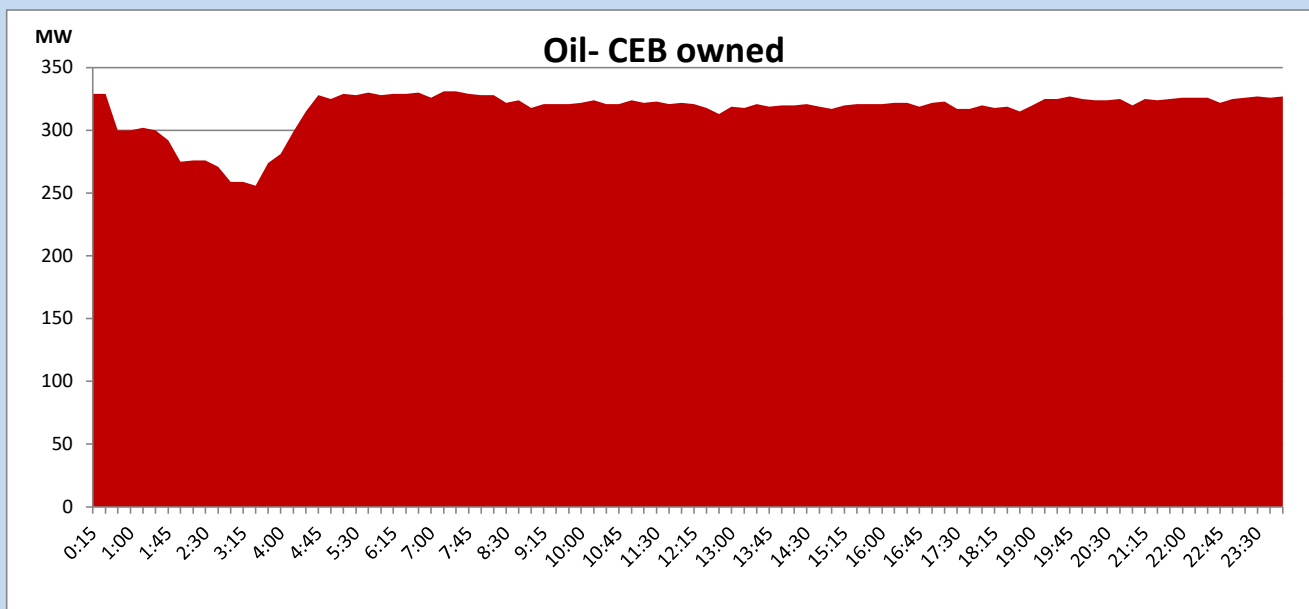
Coal Generation during

April 11, 2023



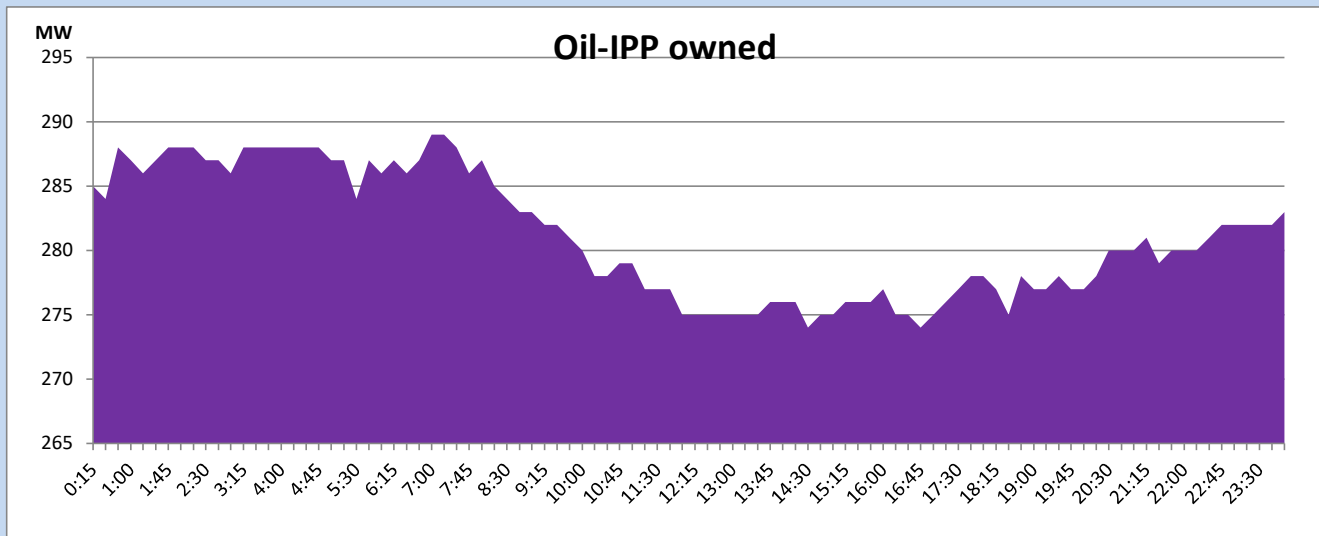
CEB Oil Plant Generation during

April 11, 2023



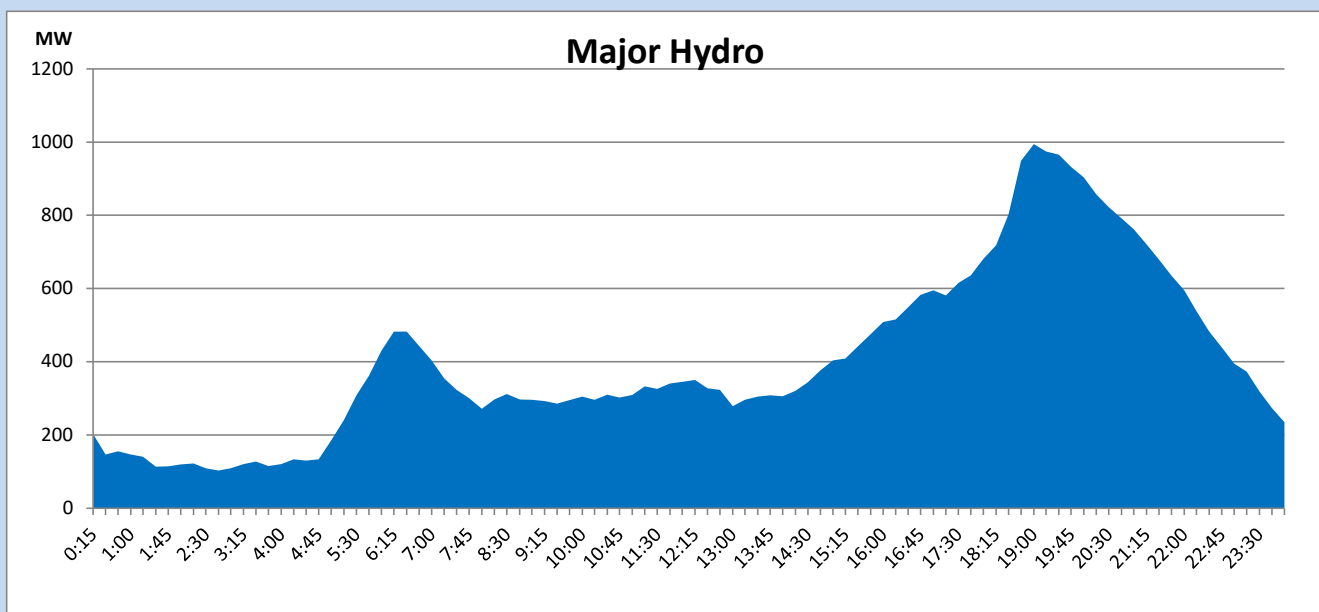
IPP Oil Plant Generation during

April 11, 2023



Major Hydro Generation during

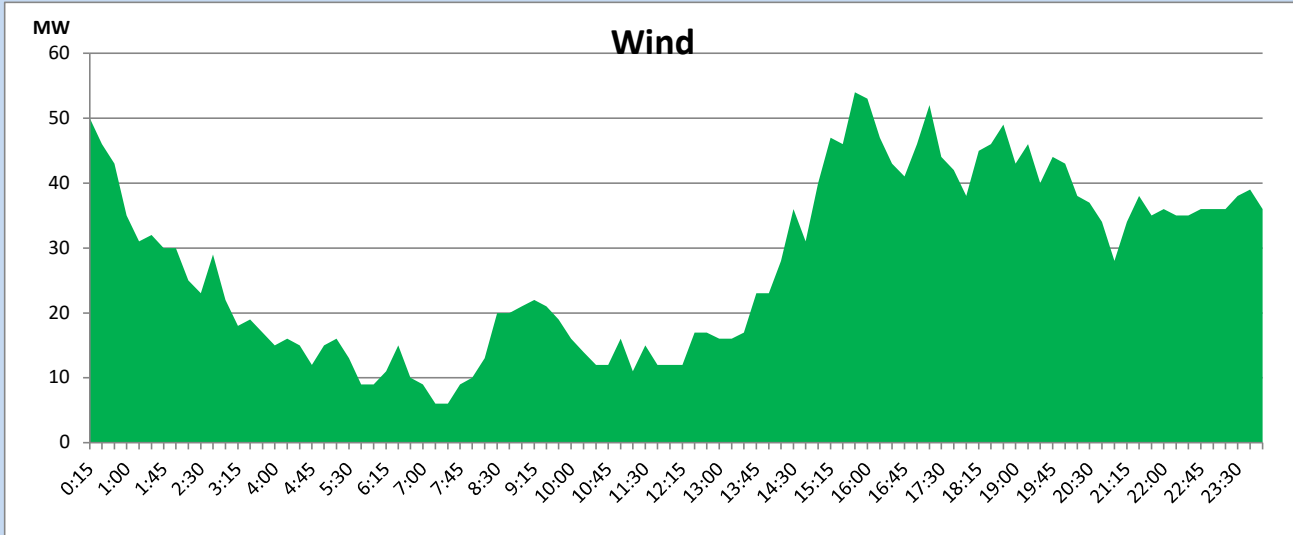
April 11, 2023



Wind Generation during

April 11, 2023

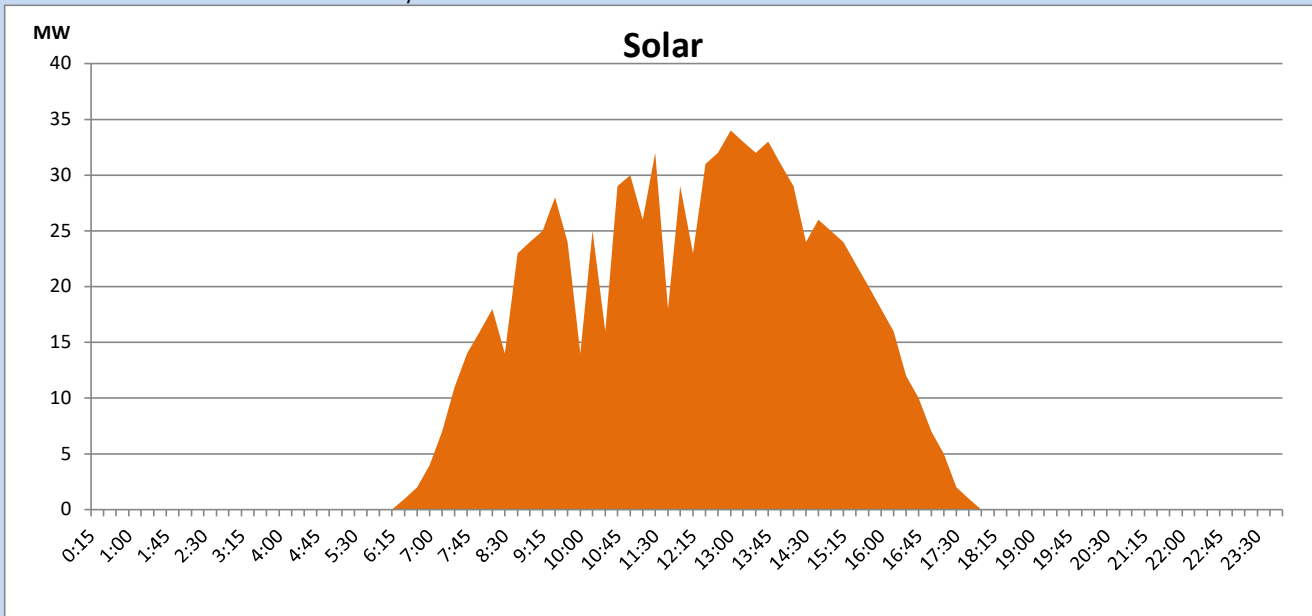
Based on Telemetered Power Stations only



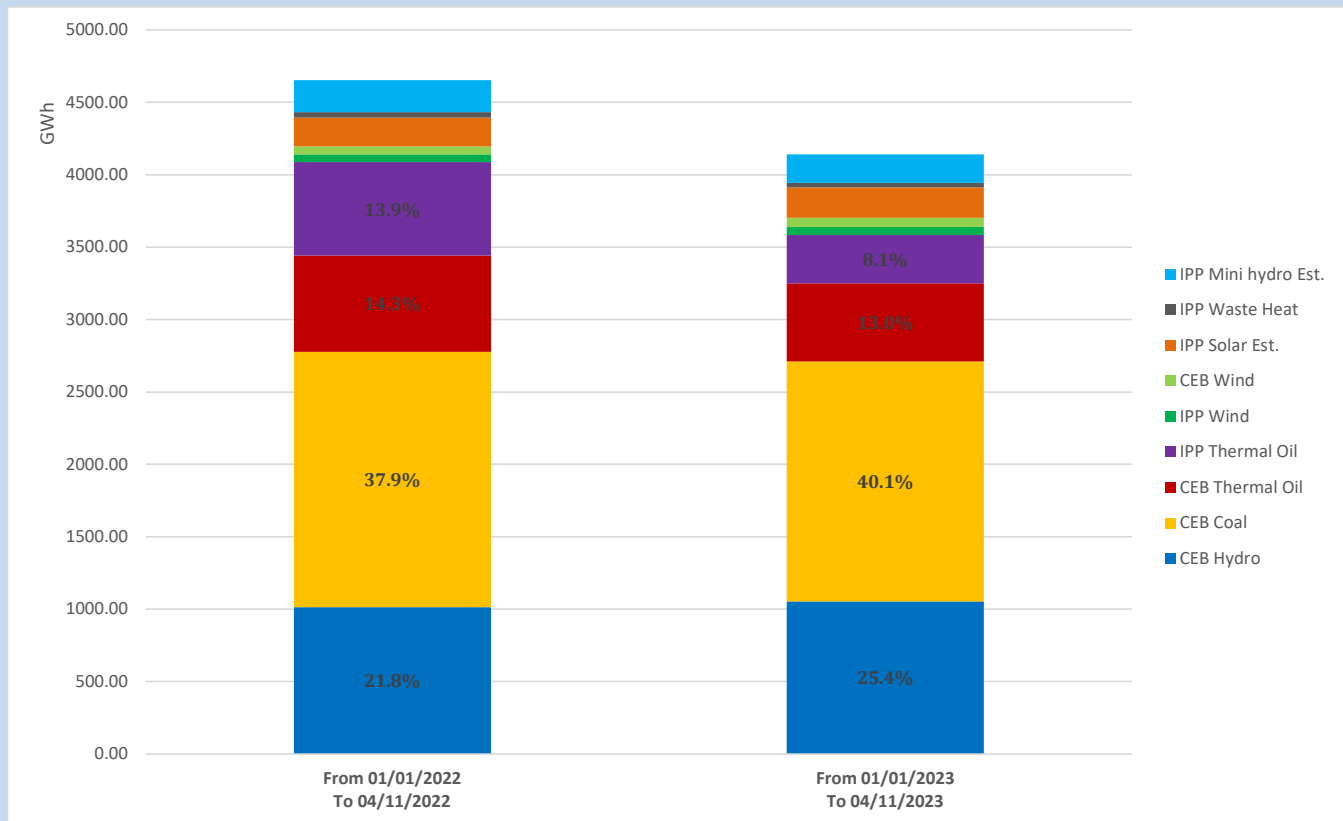
Solar Generation during

April 11, 2023

Based on Telemetered Power Stations only



Cumulative Dispatch Comparison with Last Year



The above figures are including contribution from roof top solar, non telemetered solar and mini hydro plants

Thermal Plant Fuel types

Power Station	Primary Fuel
CEB Thermal	
Sapugaskanda 1	Heavy Fuel
Sapugaskanda 2	Heavy Fuel
Kelanitissa Small Gas Turbines	Auto Diesel
GT 7 - Kelanitissa	Auto Diesel
Kelanitissa CCY	Naphtha or Diesel
Lakvijaya 1	Coal
Lakvijaya 2	Coal
Lakvijaya 3	Coal
Uthuru Janani	Heavy Fuel
Barge CEB	Heavy Fuel

Power Station	Primary Fuel
Private Thermal	
West Coast	Auto Diesel / Heavy Fuel

Major Incidents reported during the day

April 11, 2023

1) Colombo SUB C 132/11kV T/F 02 tripped from 11kV side only at 18:25hrs causing 11kV B/S 02 and B/S 03 to be dead with associated 11kV feeders. T/F 02, B/S 02, B/S 03 and all affected feeders were normalized at 19:16hrs