

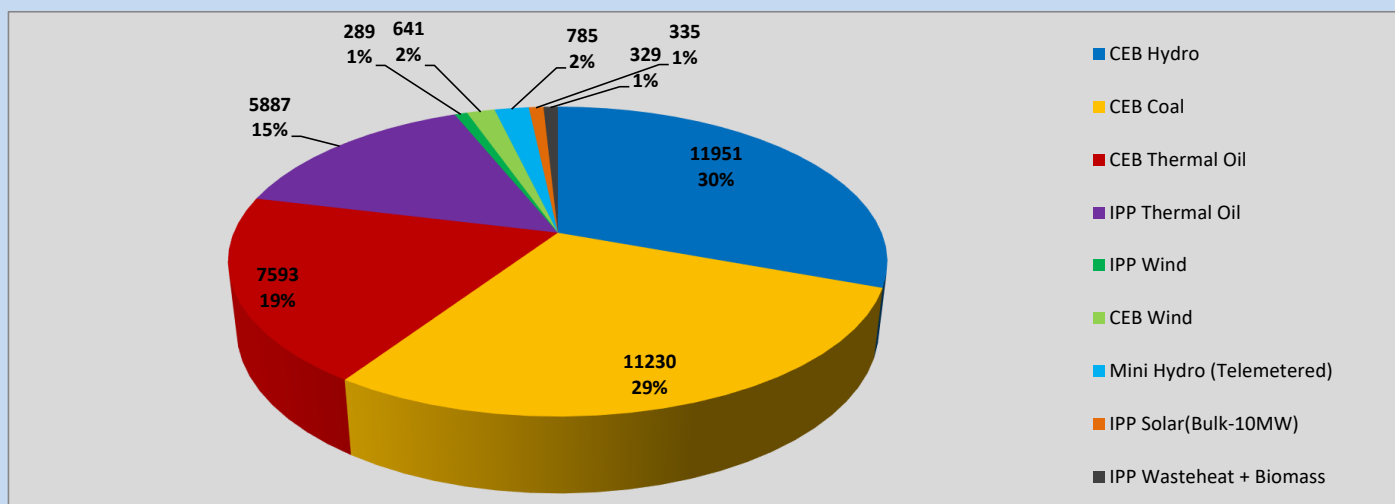
# Generation and Reservoirs Statistics

April 10, 2023



PUBLIC UTILITIES COMMISSION OF SRI LANKA

## Daily Generation Mix in MWh



Total Generation (Excluding estimated figures) =

39,040 MWh

### Estimated figures of CEB generation report

Estimated unserved energy = 0.00 GWh

Estimated Mini Hydro (Non telemetered) = 1595 MWh

Estimated IPP Solar PV (Bulk 1-10MW) = 304 MWh

Estimated Solar Roof Top PV = 1640 MWh

## Cumulative Dispatch

Following data excludes the contribution from roof top solar, non telemetered solar and mini hydro plants

### For Current Month

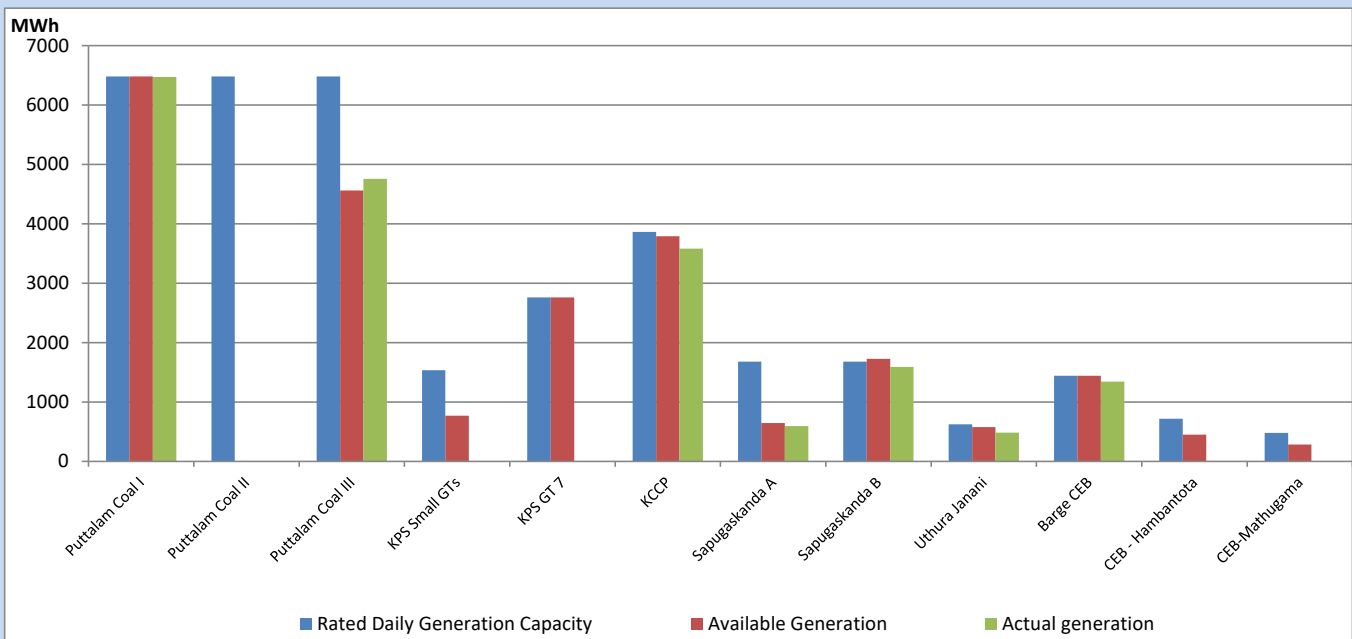
Category	Dispatch (GWh)	
CEB Hydro	122	31.48%
CEB Coal	125	32.10%
CEB Thermal Oil	61	15.84%
IPP Thermal	57	14.68%
SPP Wind	3	0.67%
CEB Wind	4	0.95%
Mini Hydro (Telemetered)	10	2.53%
IPP Solar(Bulk-10MW)	4	0.91%
IPP Wasteheat + BMP	3	0.84%
<b>Total</b>	<b>388</b>	

### For Current Year

Category	Dispatch (GWh)	
CEB Hydro	1,043	27.43%
CEB Coal	1,647	43.30%
CEB Thermal Oil	532	13.97%
IPP Thermal	327	8.60%
SPP Wind	54	1.41%
CEB Wind	64	1.68%
Mini Hydro (Telemetered)	79	2.07%
IPP Solar(Bulk-10MW)	29	0.77%
IPP Wasteheat	30	0.78%
<b>Total</b>	<b>3,804</b>	

## CEB owned Thermal Plant Dispatch

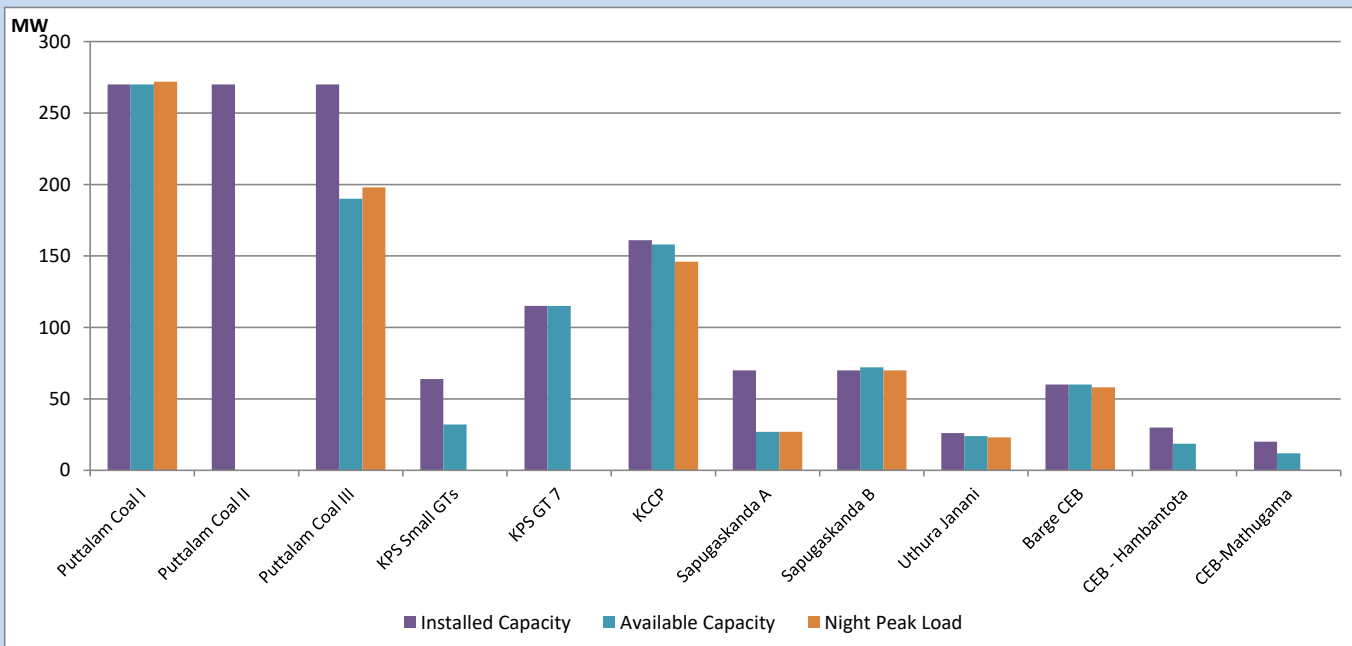
April 10, 2023



Available Generation is estimated based on plant availability at 6.00am on

April 11, 2023

## CEB owned Thermal Plant Loading at the Night Peak

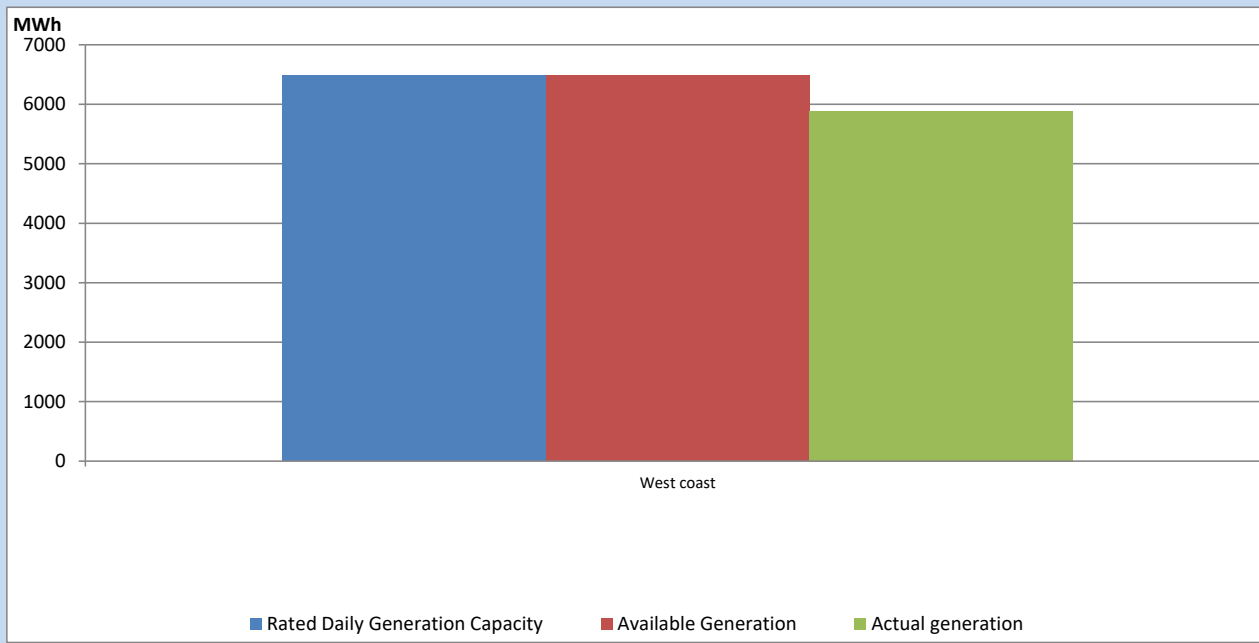


Note- Plant availability is recorded at 6.00 am on

April 11, 2023

## IPP owned Thermal Plant Dispatch

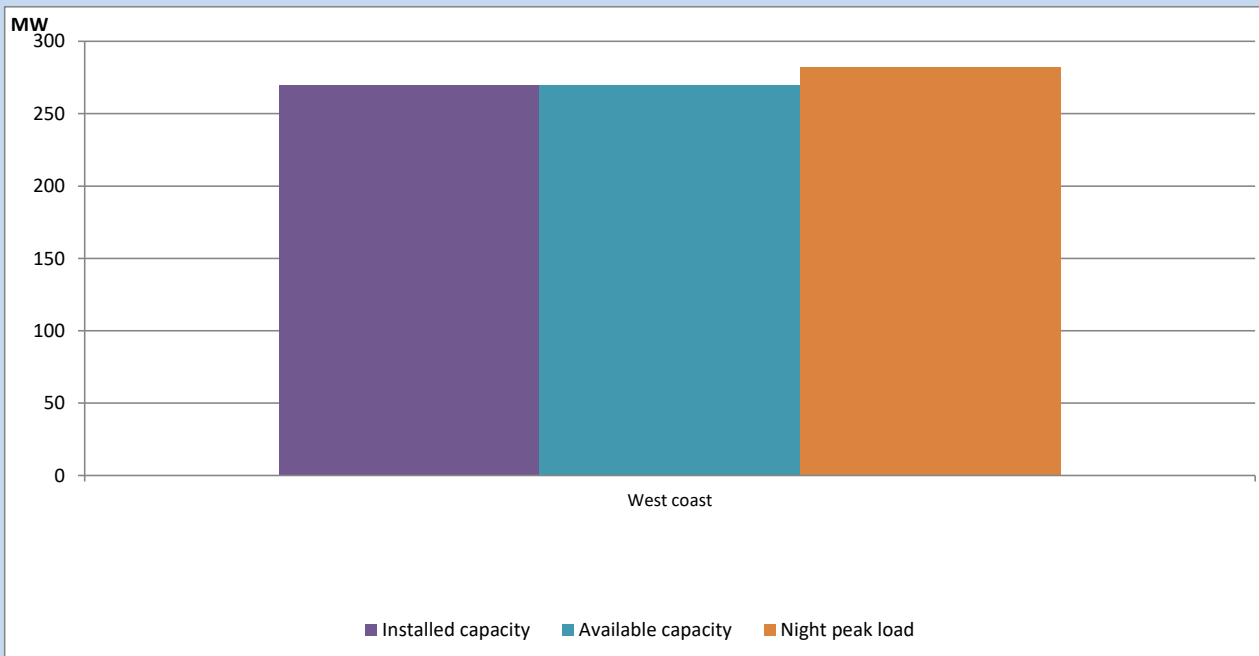
April 10, 2023



Available Generation is estimated based on plant availability at 6.00am on

April 11, 2023

## IPP owned Thermal Plant Loading at the Night Peak

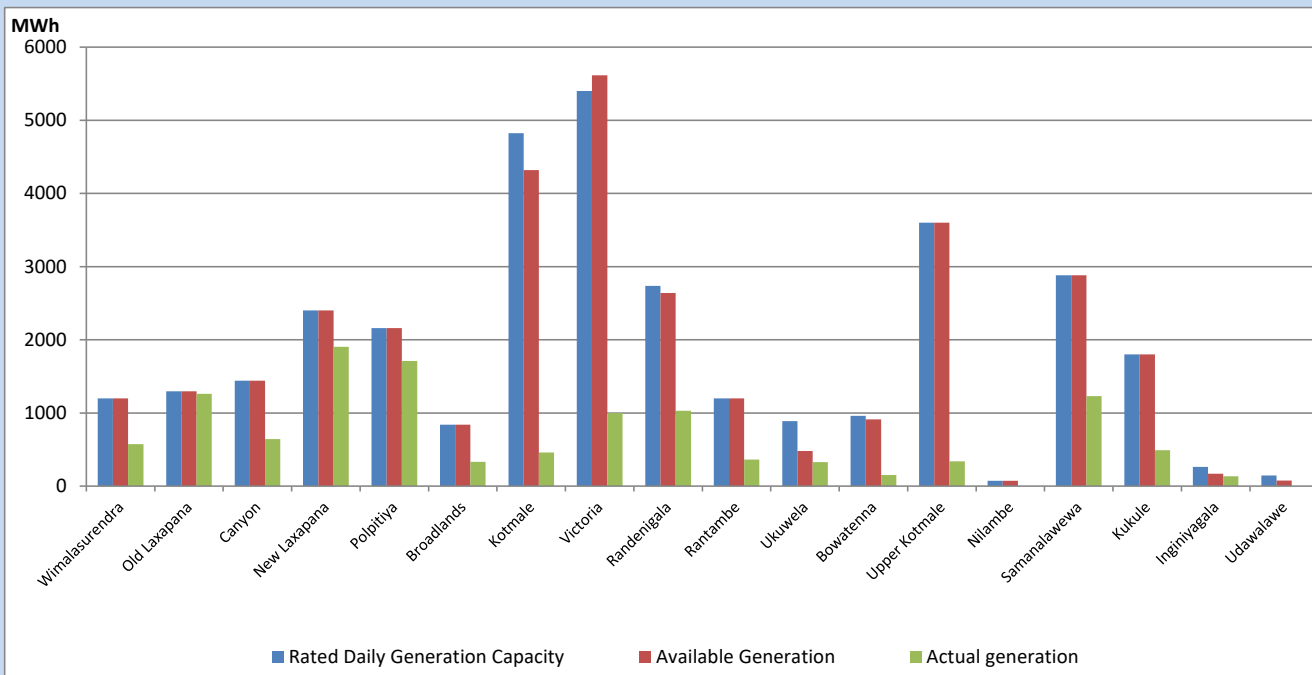


Note- Plant availability is recorded at 6.00 am on

April 11, 2023

## Major Hydro Plant Dispatch

April 10, 2023

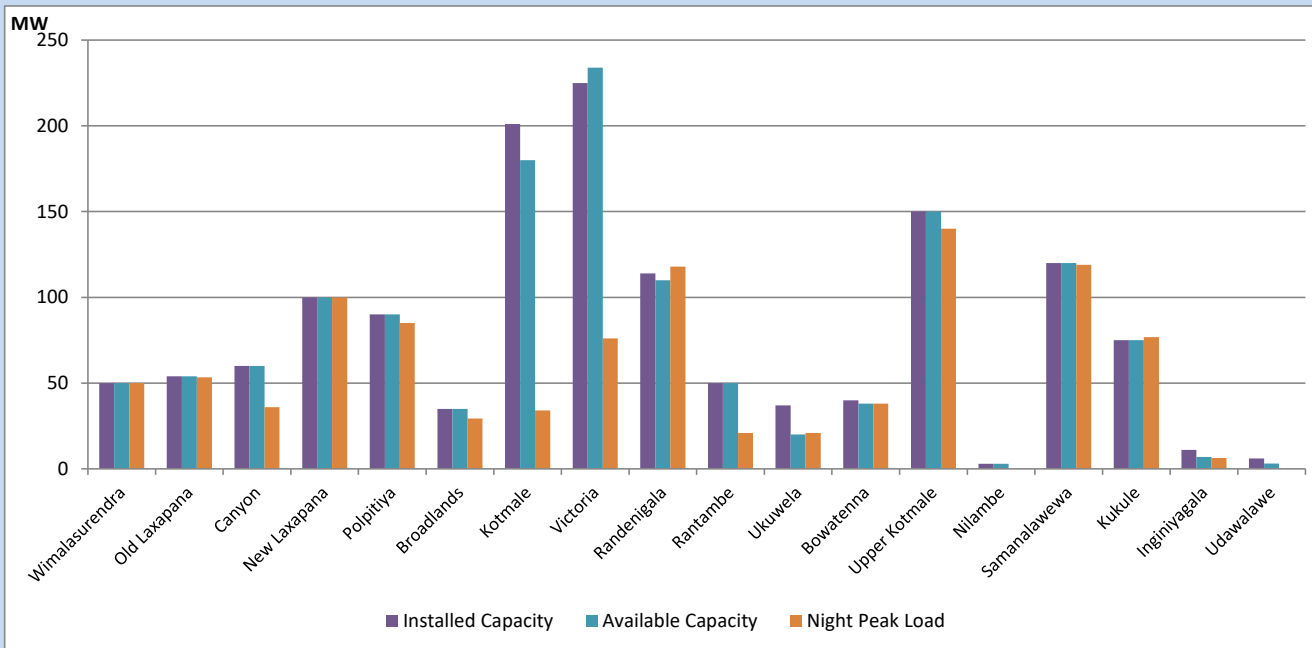


Available Generation is estimated based on plant availability at 6.00am on  
Broadlands power plant is operating in the Commissioning Stage

April 11, 2023

## Major Hydro Plant Loading at Night Peak

April 10, 2023



Note- Plant availability is recorded at 6.00 am on  
Broadlands power plant is operating in the Commissioning Stage

April 11, 2023

## Summary of Major Plant performance

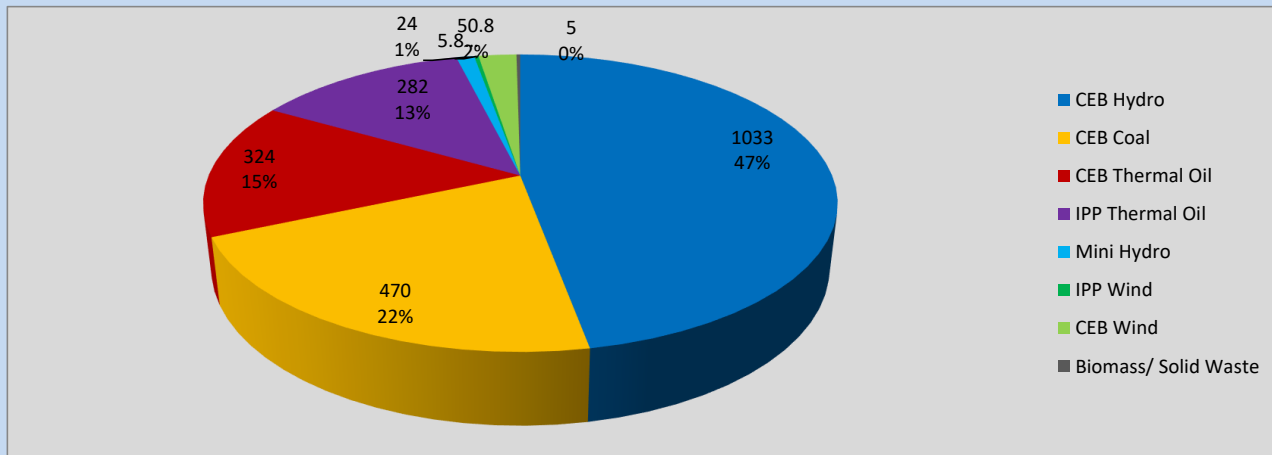
Plant	Installed Capacity	Plant Availability	Night peak Load	Plant Dispatch
	(MW)	(MW)	(MW)	(MWh)
Wimalasurendra	50	50	50	573
Old Laxapana	54	54	53	1,261
Canyon	60	60	36	643
New Laxapana	100	100	100	1,904
Polpitiya	90	90	85	1,709
Broadlands	35	35	29	330
Kotmale	201	180	34	460
Victoria	225	234	76	999
Randenigala	114	110	118	1,031
Rantambe	50	50	21	364
Ukuwela	37	20	21	328
Bowatenna	40	38	38	152
Upper Kotmale	150	150	140	339
Nilambe	3	3	0	0
Samanalawewa	120	120	119	1,231
Kukule	75	75	77	491
Inginiyagala	11	7	6	136
Udawalawe	6	3	0	0
Puttalam Coal I	270	270	272	6,473
Puttalam Coal II	270	0	0	0
Puttalam Coal III	270	190	198	4,757
KPS Small GTs	64	32	0	0
KPS GT 7	115	115	0	0
KCCP	161	158	146	3,581
Sapugaskanda A	70	27	27	595
Sapugaskanda B	70	72	70	1,589
Uthura Janani	26	24	23	485
Barge CEB	60	60	58	1,343
CEB-Hambantota	30	19	0	0
CEB-Mathugama	20	12	0	0
ACE Matara	24	0	0	0
Asia Power	50	0	0	0
Sojitz Kelanitissa	163	0	0	0
West Coast	270	270	282	5,887
Nothern Power	36	0	0	0
ACE Embilipitiya	93	0	0	0
<b>Total</b>	<b>3,483</b>	<b>2,628</b>	<b>2,166</b>	<b>39,040</b>

Plant availability is the availability recorded at 6 am on

April 11, 2023

## Contribution to the Night Peak in MW

April 10, 2023

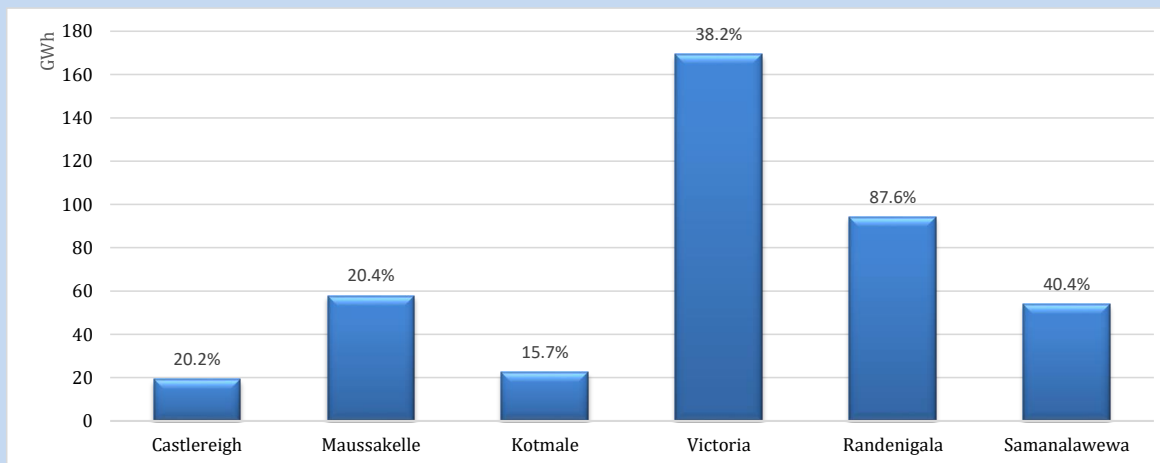


Night Peak*	2,195 MW
Day Peak	1,833 MW
Minimum Demand	1,176 MW

Above figures are excluding contribution from roof top solar, non telemetered solar and mini hydro plants

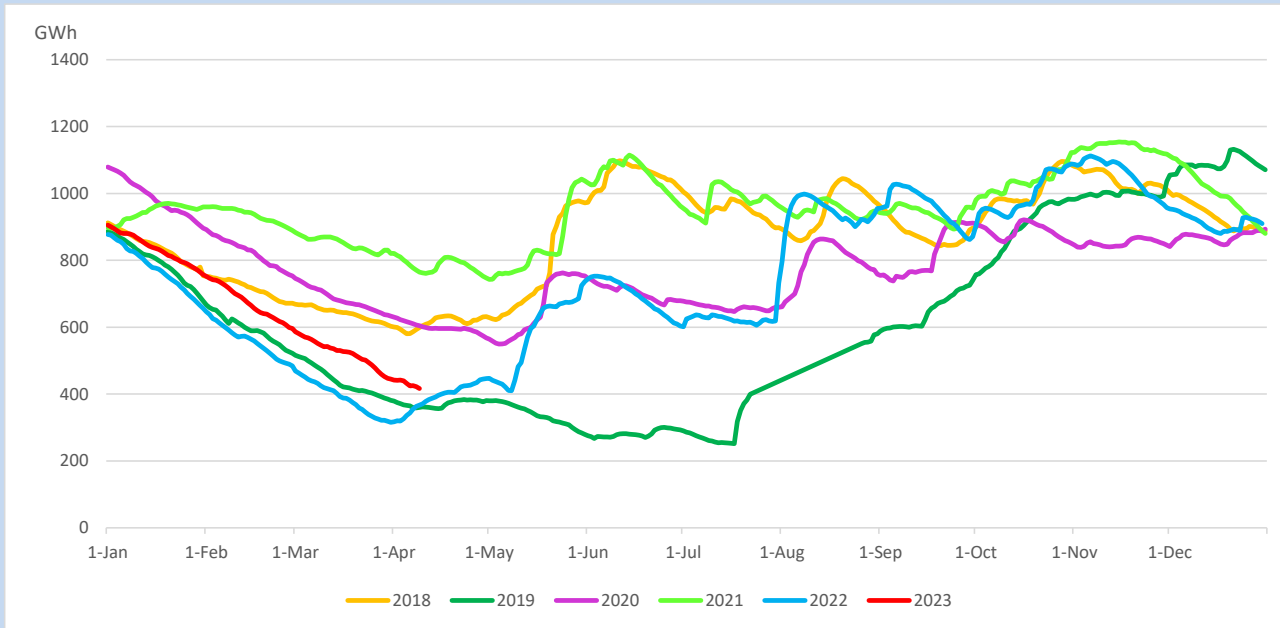
## Reservoir Levels -

as at 06.00 Hr on April 11, 2023

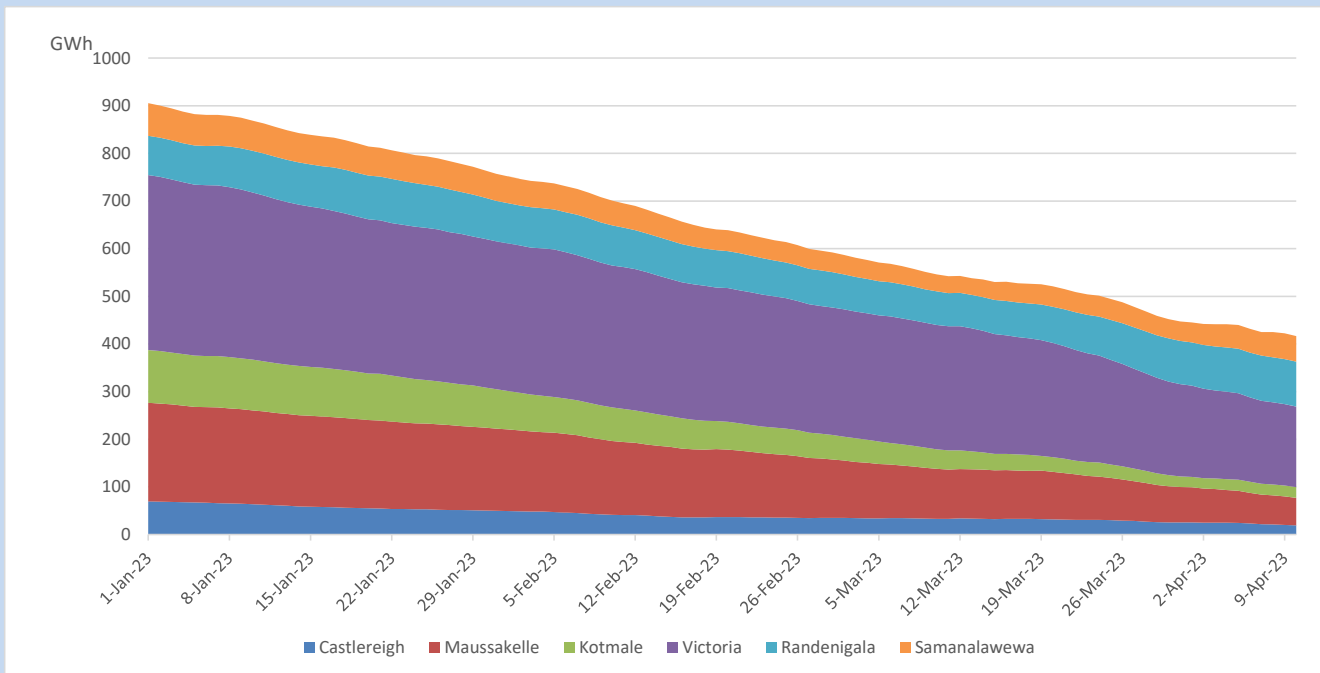


Total Reservoir Level	416.7 GWh
% of Total capacity	34.6%

## Comparison of Total Reservoir Storage Levels with Past Years

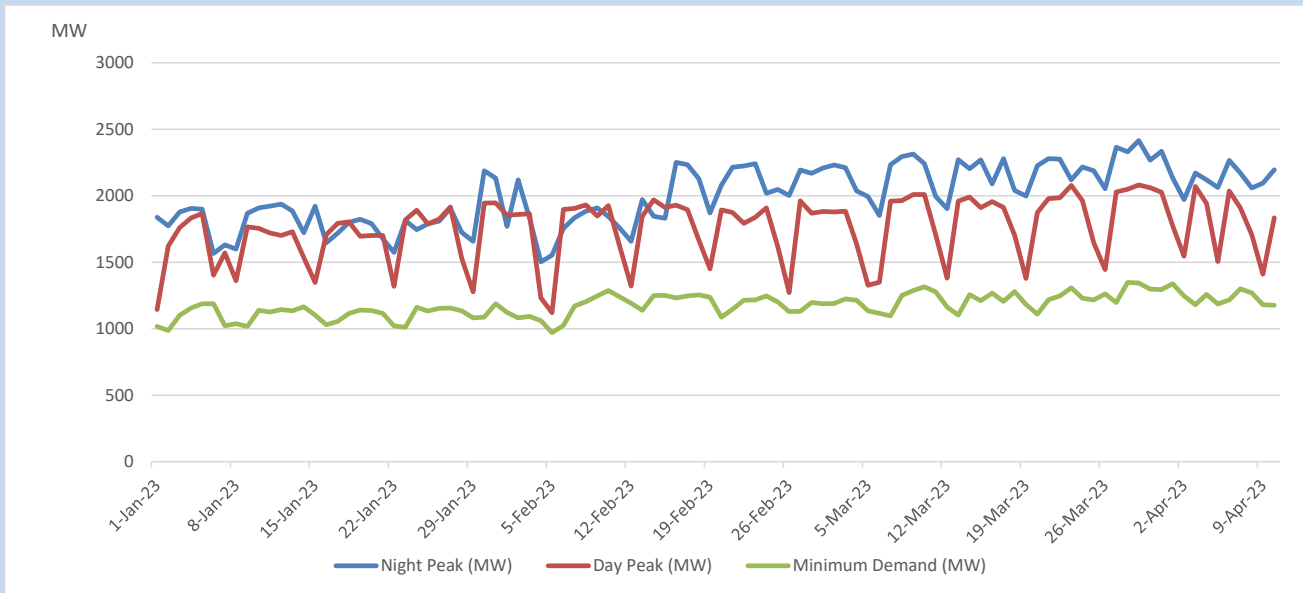


## Variation of Major Hydro Reservoir Levels in the current year (GWh)





## Variation of Demand during the current year

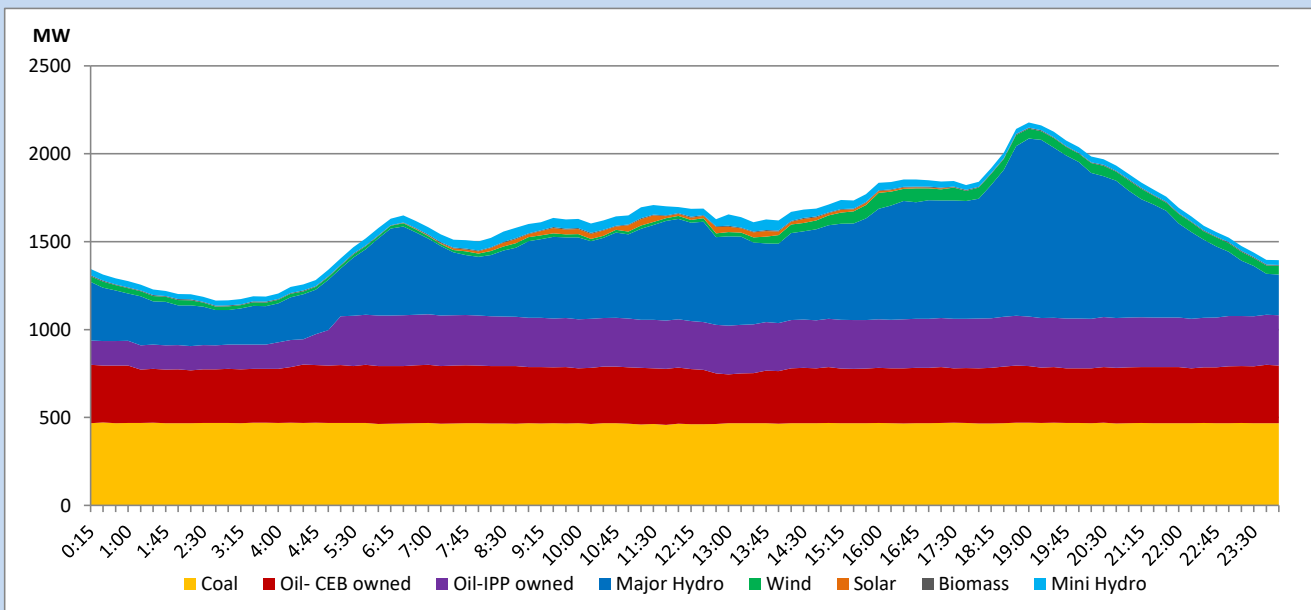


The above figures are excluding contribution from roof top solar, non telemetered solar and mini hydro plants

## Daily Load Curve

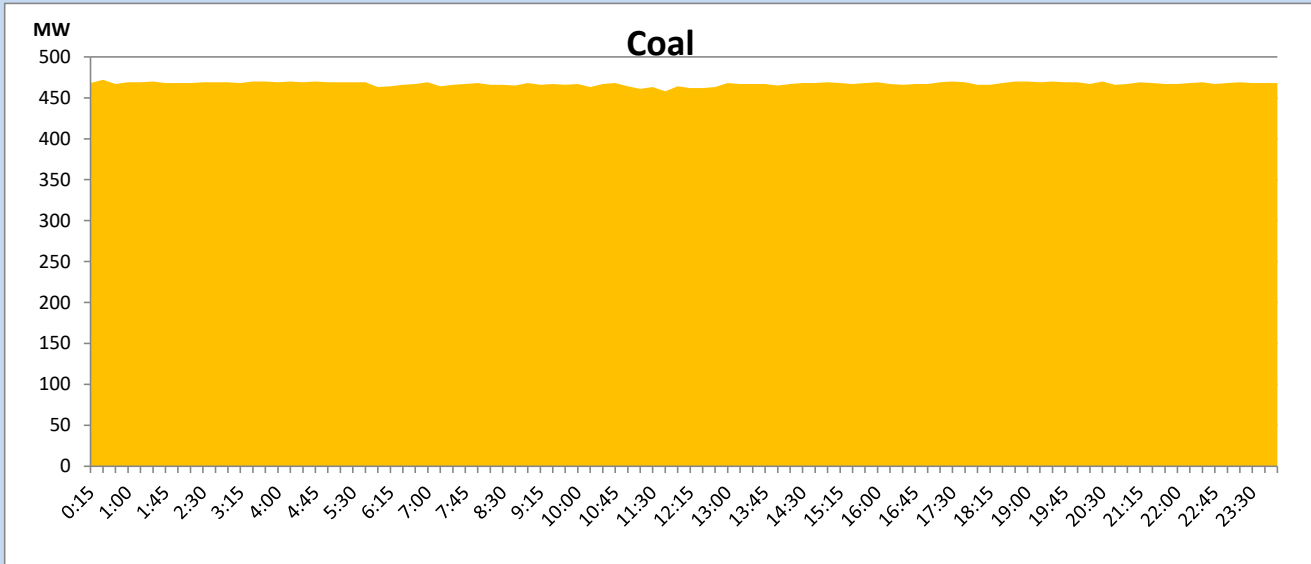
April 10, 2023

Solar and wind data is based on Telemetered Power Stations only



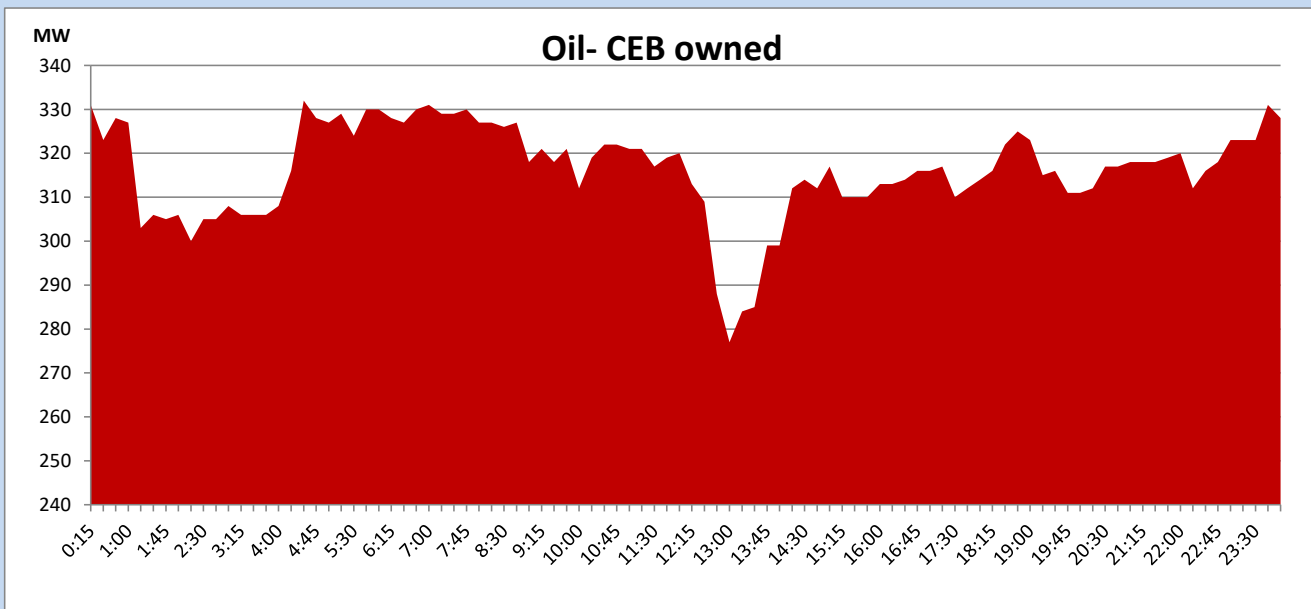
## Coal Generation during

April 10, 2023



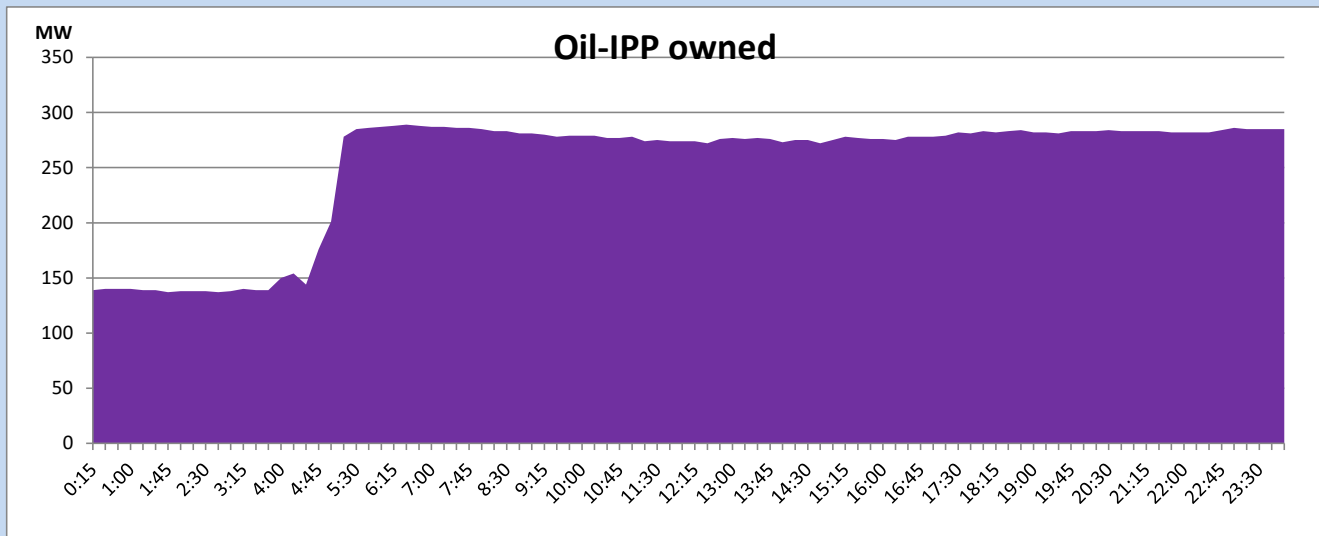
## CEB Oil Plant Generation during

April 10, 2023



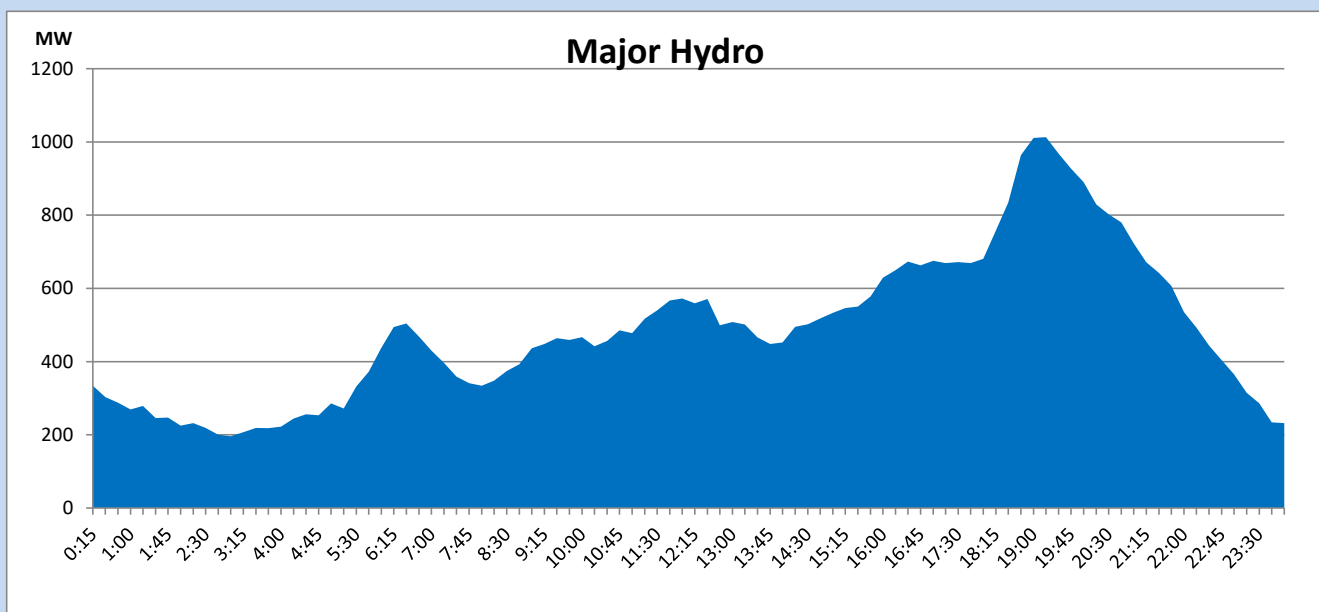
## IPP Oil Plant Generation during

April 10, 2023



## Major Hydro Generation during

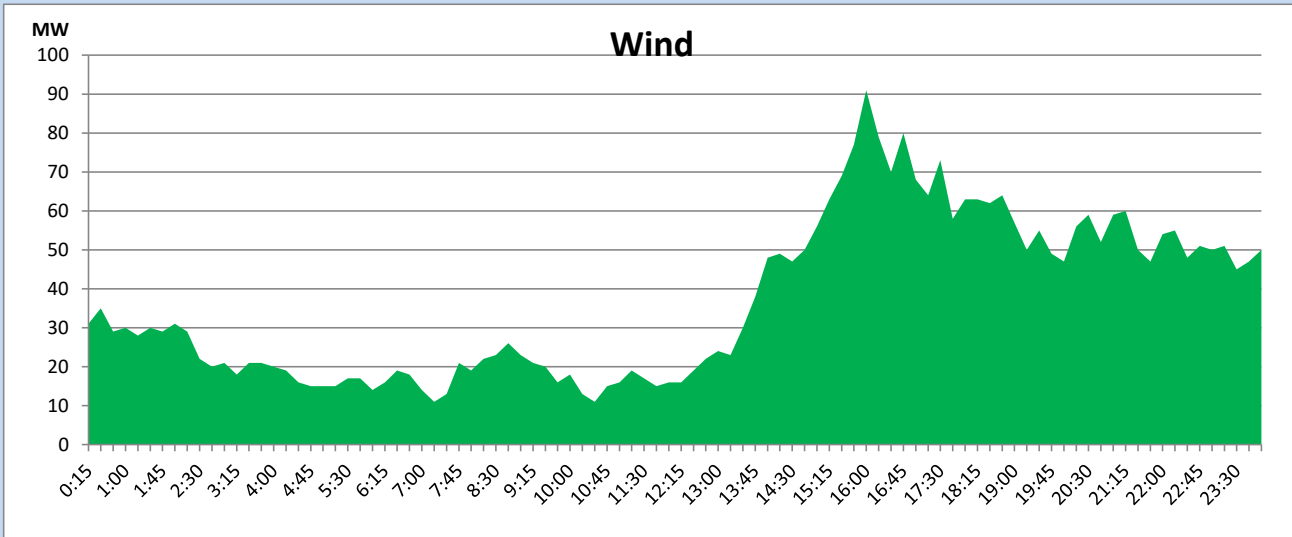
April 10, 2023



## Wind Generation during

April 10, 2023

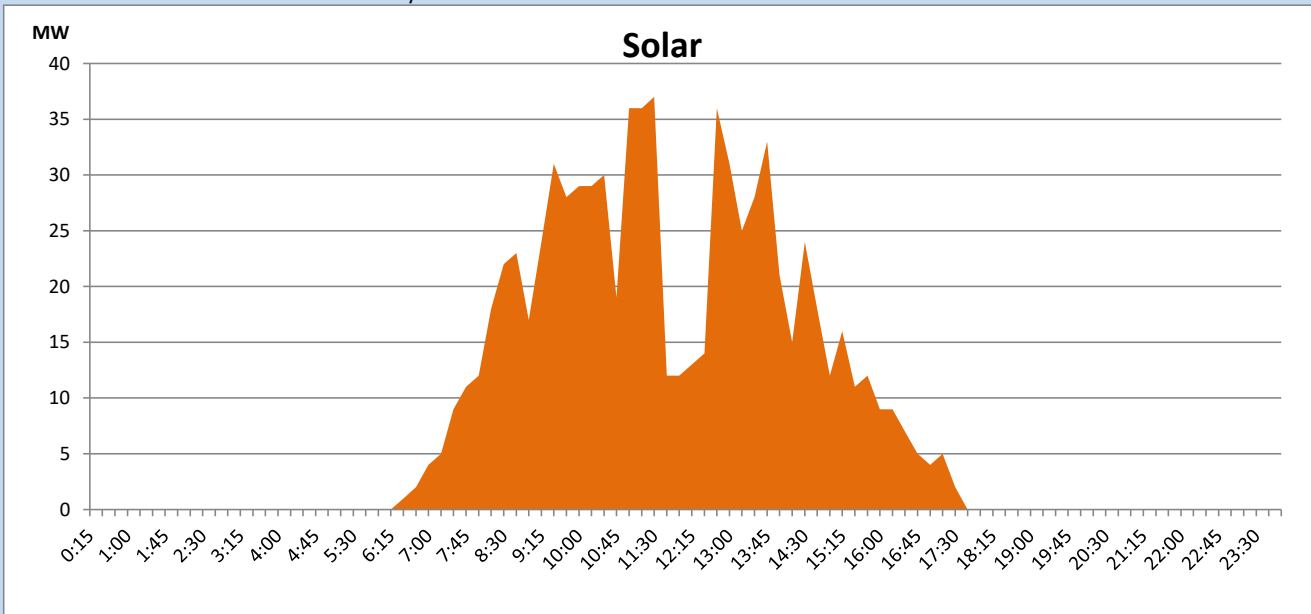
Based on Telemetered Power Stations only



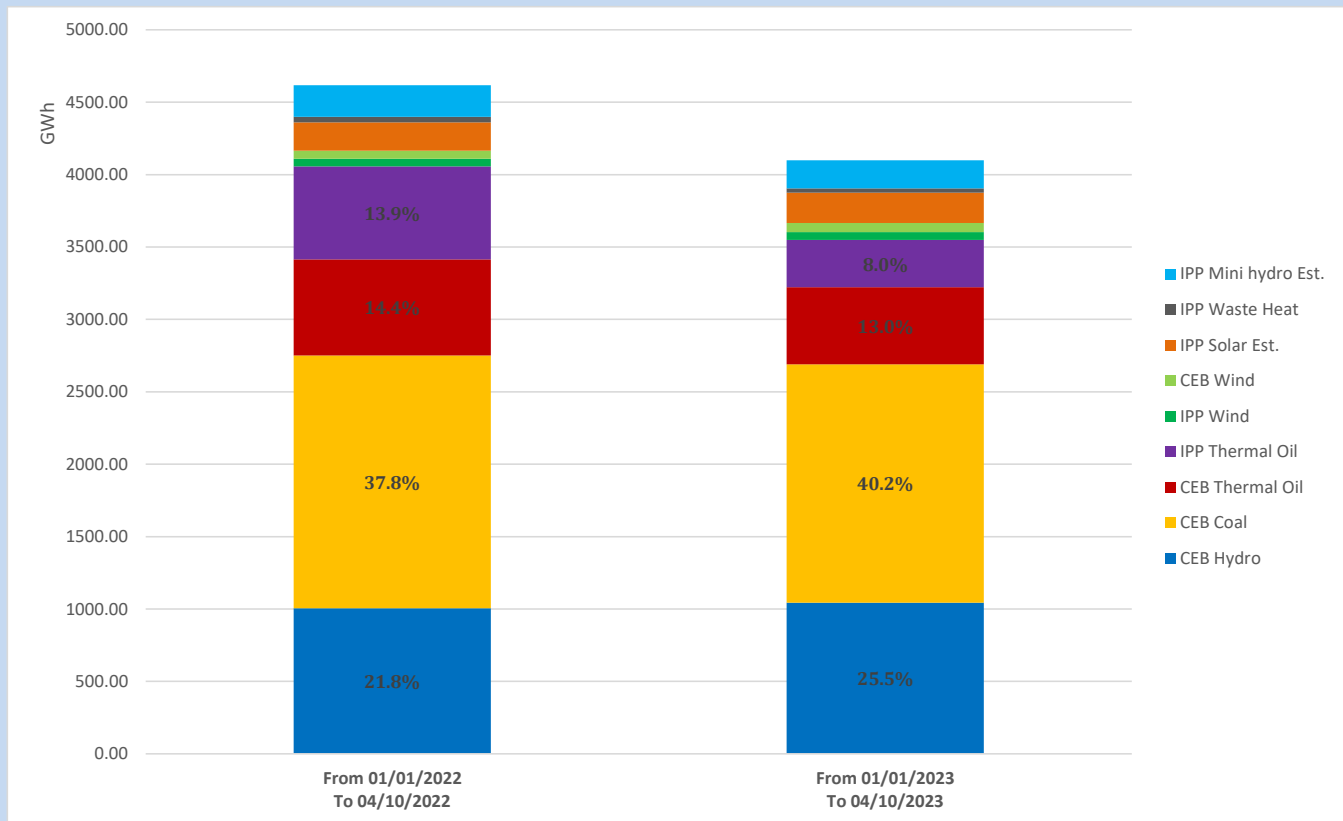
## Solar Generation during

April 10, 2023

Based on Telemetered Power Stations only



## Cumulative Dispatch Comparison with Last Year



The above figures are including contribution from roof top solar, non telemetered solar and mini hydro plants

## Thermal Plant Fuel types

Power Station	Primary Fuel
CEB Thermal	
Sapugaskanda 1	Heavy Fuel
Sapugaskanda 2	Heavy Fuel
Kelanitissa Small Gas Turbines	Auto Diesel
GT 7 - Kelanitissa	Auto Diesel
Kelanitissa CCY	Naphtha or Diesel
Lakvijaya 1	Coal
Lakvijaya 2	Coal
Lakvijaya 3	Coal
Uthuru Janani	Heavy Fuel
Barge CEB	Heavy Fuel

Power Station	Primary Fuel
Private Thermal	
West Coast	Auto Diesel / Heavy Fuel

## Major Incidents reported during the day

April 10, 2023

- 1) Rantembe 220/132kV T/F 01 tripped at 8:00hrs due to operation of T/F pressure trip alarm. Rantembe 220/132kV T/F 01 normalized at 12:21hrs.
- 2) Uthuru Janani DG 02 tripped at 09:55hrs rejecting 8MW from the system due to operation of Reverse power alarm. Uthuru Janani DG 02 resumed generation at 10:03hrs
- 3) Randenigala Unit 01 tripped at 12:21hrs rejecting 47MW from the system due to operation of Generator lower guide bearing reservoir oil level alarm. Randenigala unit 01 made available at 12:40hrs.
- 4) Mathugama – Kukule cct 01 tripped from both ends at 19:45hrs due to the operation of differential protection. The cct was restored at 20:18hrs.
- 5) Sapugaskanda P/S Gen 05, 06 & 08 made unavailable from 12:09hrs to 13:29hrs, from 15:06hrs to 18:24hrs and from 19:12hrs to 22:39hrs, respectively, due to B/D.