

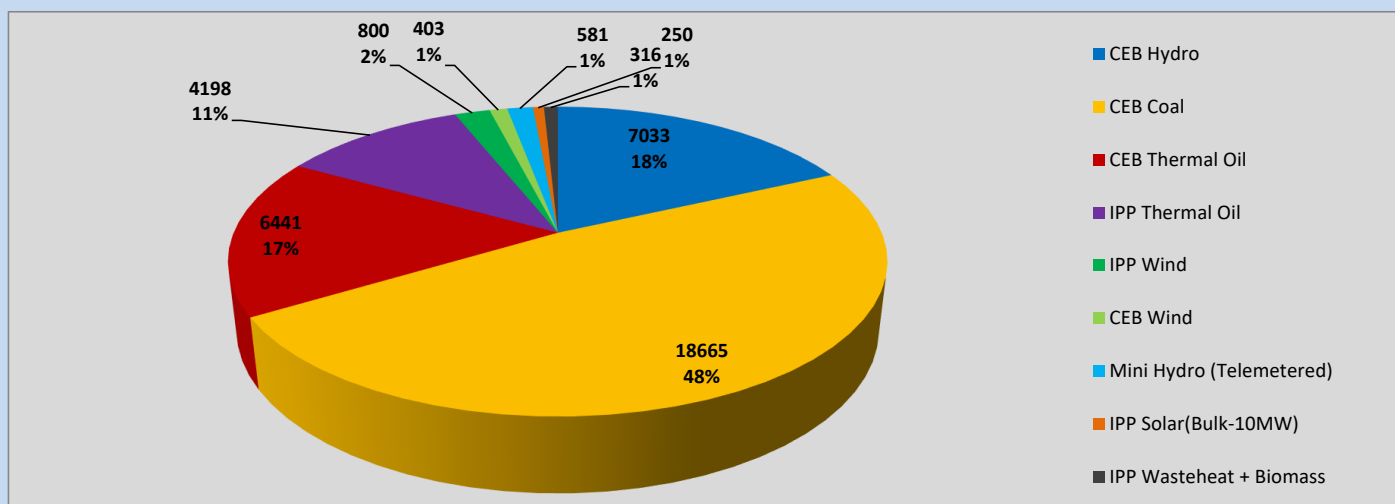
Generation and Reservoirs Statistics

May 9, 2023



PUBLIC UTILITIES COMMISSION OF SRI LANKA

Daily Generation Mix in MWh



Total Generation (Excluding estimated figures) =

38,687 MWh

Estimated figures of CEB generation report

Estimated unserved energy = 0.00 GWh
 Estimated Mini Hydro (Non telemetered) = 3409MWh
 Estimated IPP Solar PV (Bulk 1-10MW) = 304 MWh
 Estimated Solar Roof Top PV = 1920 MWh

Cumulative Dispatch

Following data excludes the contribution from roof top solar, non telemetered solar and mini hydro plants

For Current Month

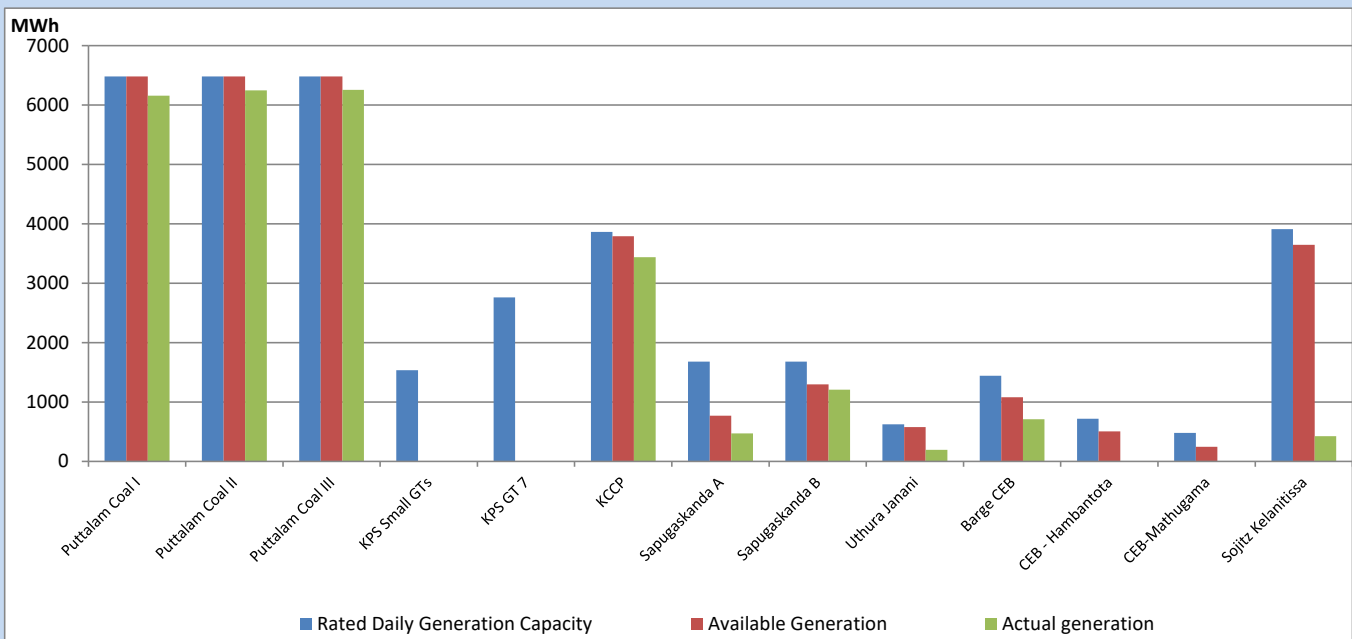
Category	Dispatch (GWh)	
CEB Hydro	67	21.73%
CEB Coal	167	54.01%
CEB Thermal Oil	35	11.15%
IPP Thermal	21	6.71%
SPP Wind	4	1.29%
CEB Wind	3	1.09%
Mini Hydro (Telemetered)	8	2.42%
IPP Solar(Bulk-10MW)	2	0.69%
IPP Wasteheat + BMP	3	0.90%
Total	310	

For Current Year

Category	Dispatch (GWh)	
CEB Hydro	1,269	26.09%
CEB Coal	2,154	44.29%
CEB Thermal Oil	690	14.18%
IPP Thermal	438	9.01%
SPP Wind	62	1.27%
CEB Wind	73	1.51%
Mini Hydro (Telemetered)	103	2.12%
IPP Solar(Bulk-10MW)	37	0.75%
IPP Wasteheat	38	0.77%
Total	4,864	

CEB owned Thermal Plant Dispatch

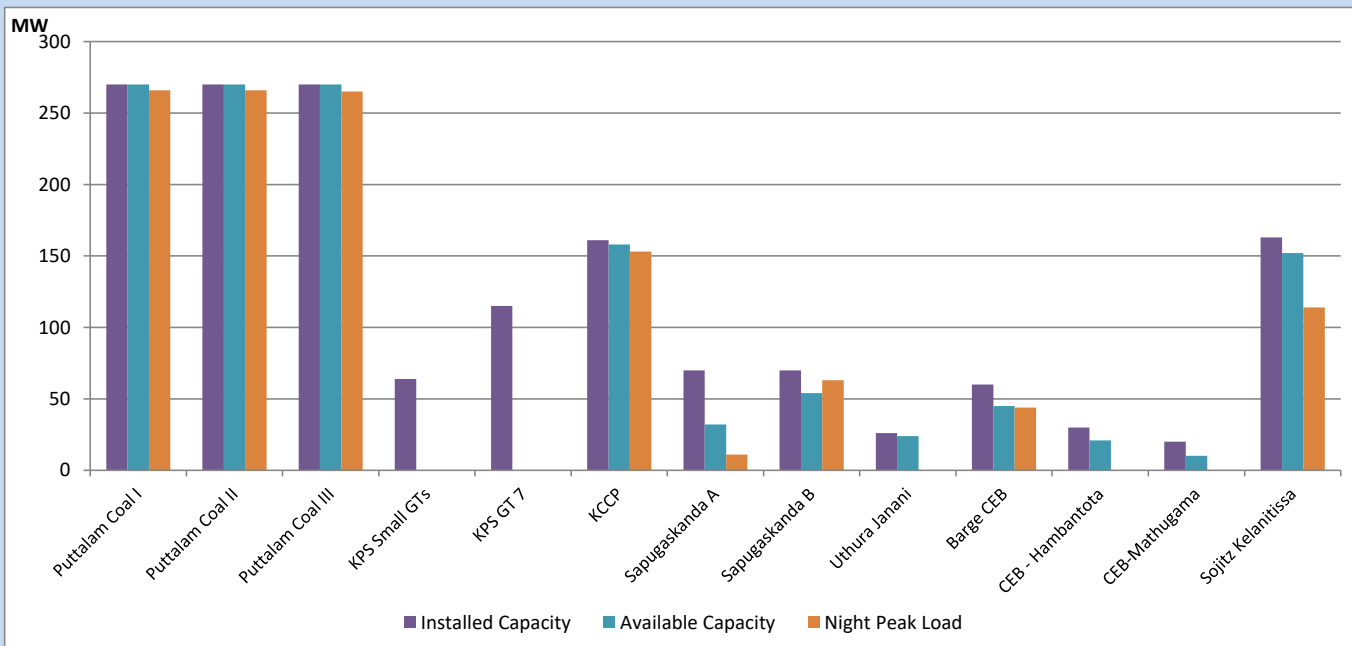
May 9, 2023



Available Generation is estimated based on plant availability at 6.00am on

May 10, 2023

CEB owned Thermal Plant Loading at the Night Peak



Note-

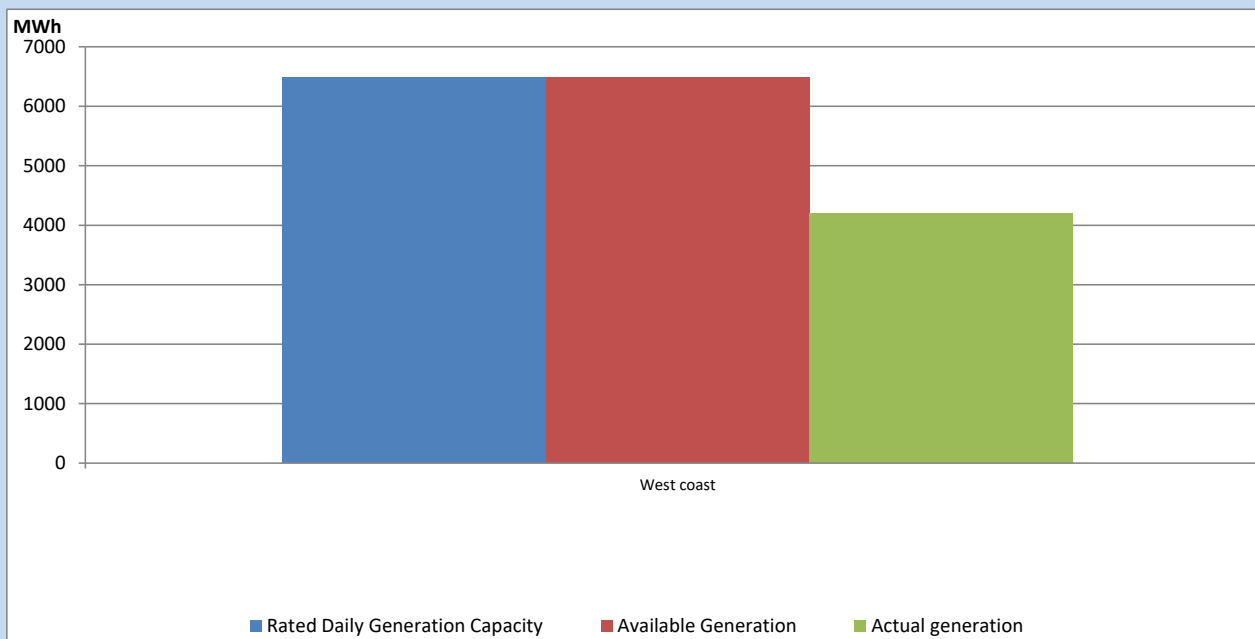
Plant availability is recorded at 6.00 am on

May 10, 2023

Sojitz Kelanitissa Plant is under Testing & Commissioning following to plant transfer procedure to CEB

IPP owned Thermal Plant Dispatch

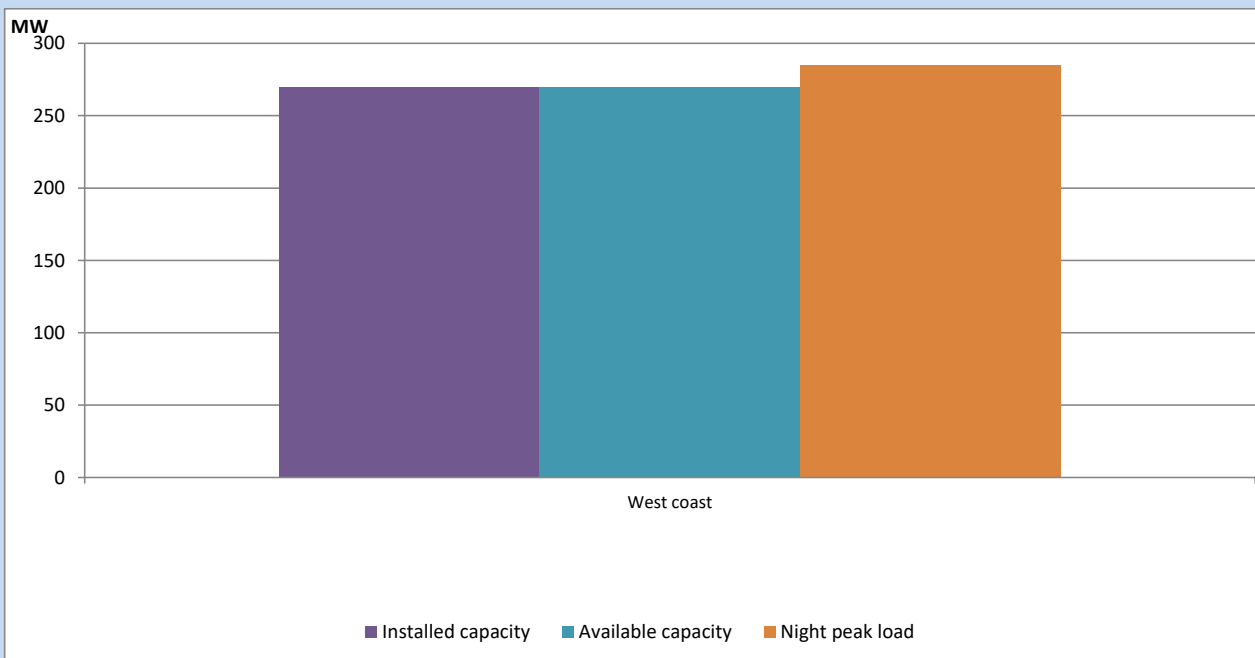
May 9, 2023



Available Generation is estimated based on plant availability at 6.00am on

May 10, 2023

IPP owned Thermal Plant Loading at the Night Peak

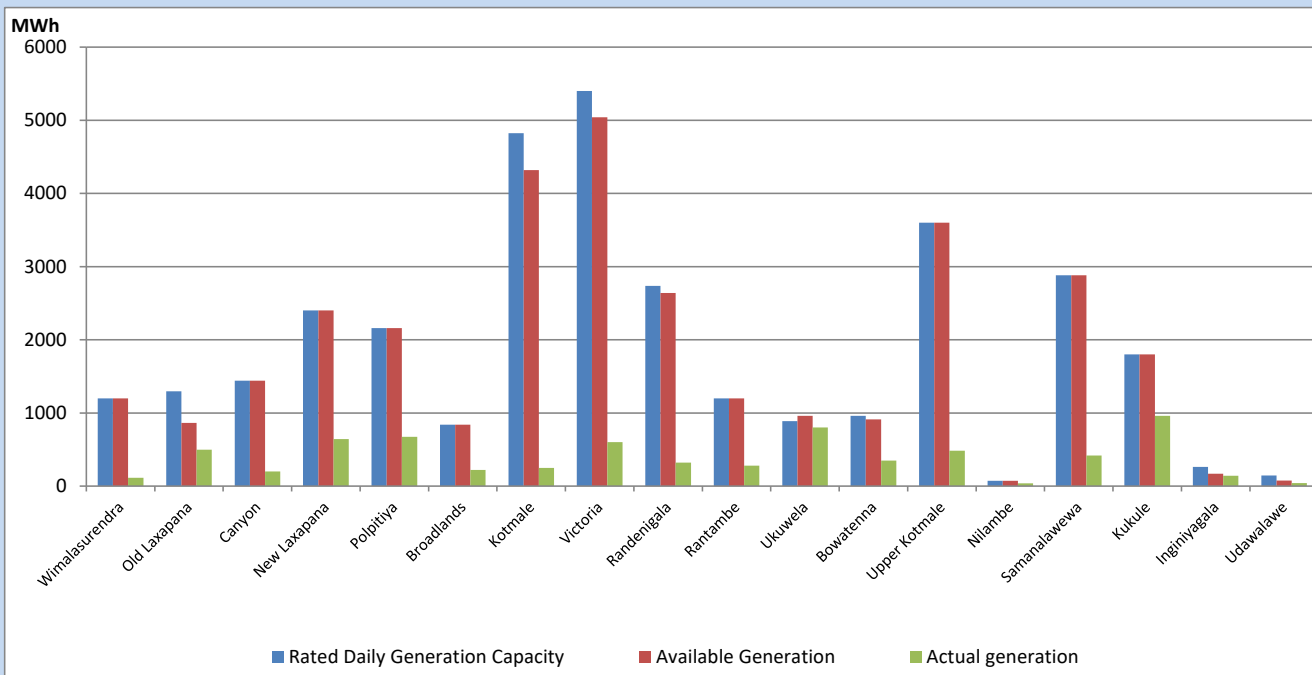


Note- Plant availability is recorded at 6.00 am on

May 10, 2023

Major Hydro Plant Dispatch

May 9, 2023

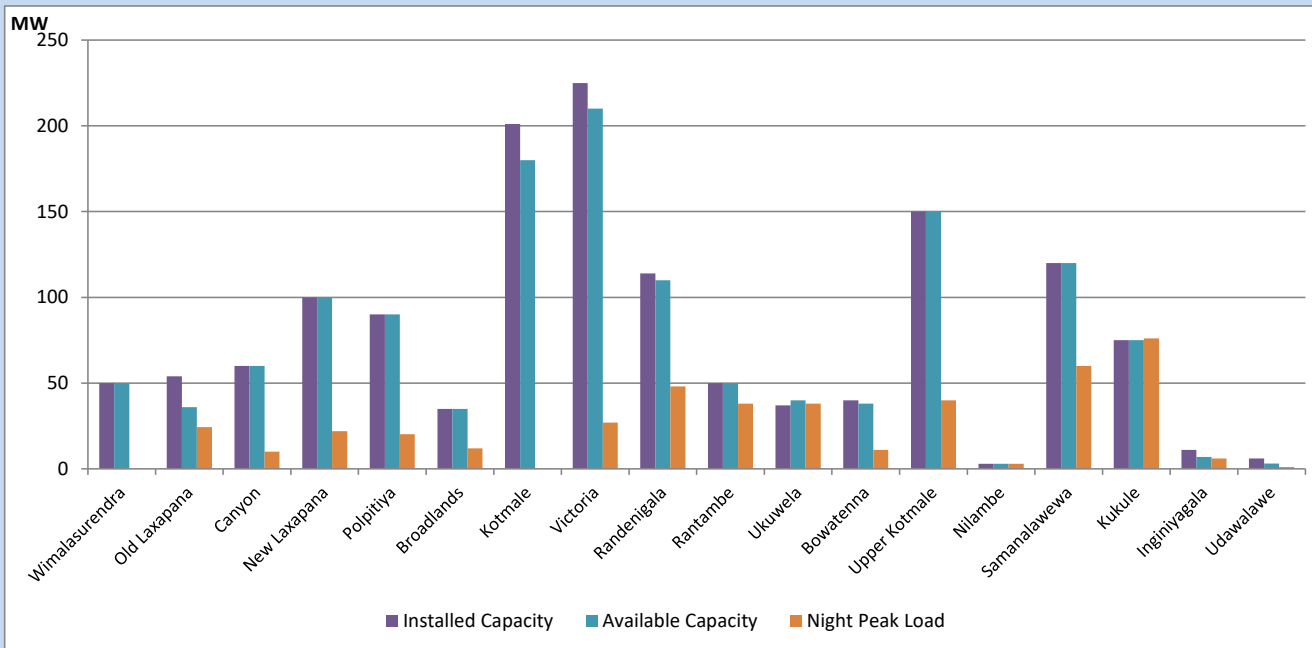


Available Generation is estimated based on plant availability at 6.00am on
Broadlands power plant is operating in the Commissioning Stage

May 10, 2023

Major Hydro Plant Loading at Night Peak

May 9, 2023



Note- Plant availability is recorded at 6.00 am on
Broadlands power plant is operating in the Commissioning Stage

May 10, 2023

Summary of Major Plant performance

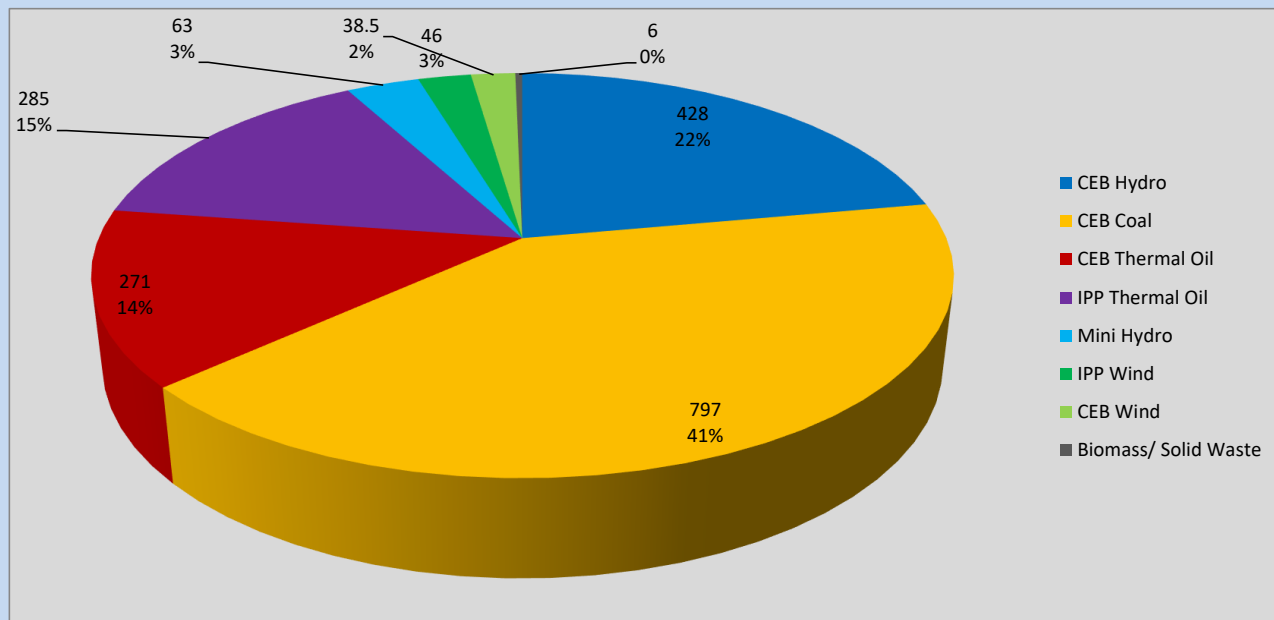
Plant	Installed Capacity	Plant Availability	Night peak Load	Plant Dispatch
	(MW)	(MW)	(MW)	(MWh)
Wimalasurendra	50	50	0	115
Old Laxapana	54	36	24	496
Canyon	60	60	10	201
New Laxapana	100	100	22	643
Polpitiya	90	90	20	672
Broadlands	35	35	12	220
Kotmale	201	180	0	250
Victoria	225	210	27	600
Randenigala	114	110	48	321
Rantambe	50	50	38	280
Ukuwela	37	40	38	802
Bowatenna	40	38	11	349
Upper Kotmale	150	150	40	484
Nilambe	3	3	3	38
Samanalawewa	120	120	60	417
Kukule	75	75	76	961
Inginiyagala	11	7	6	143
Udawalawe	6	3	1	41
Puttalam Coal I	270	270	266	6,159
Puttalam Coal II	270	270	266	6,249
Puttalam Coal III	270	270	265	6,257
KPS Small GTs	64	0	0	0
KPS GT 7	115	0	0	0
KCCP	161	158	153	3,439
Sapugaskanda A	70	32	11	470
Sapugaskanda B	70	54	63	1,206
Uthura Janani	26	24	0	193
Barge CEB	60	45	44	710
CEB-Hambantota	30	21	0	0
CEB-Mathugama	20	10	0	0
ACE Matara	24	0	0	0
Asia Power	50	0	0	0
Sojitz Kelanitissa	163	152	114	423
West Coast	270	270	285	4,198
Nothern Power	36	0	0	0
ACE Embilipitiya	93	0	0	0
Total	3,483	2,933	2,057	38,687

Plant availability is the availability recorded at 6 am on

May 10, 2023

Contribution to the Night Peak in MW

May 9, 2023

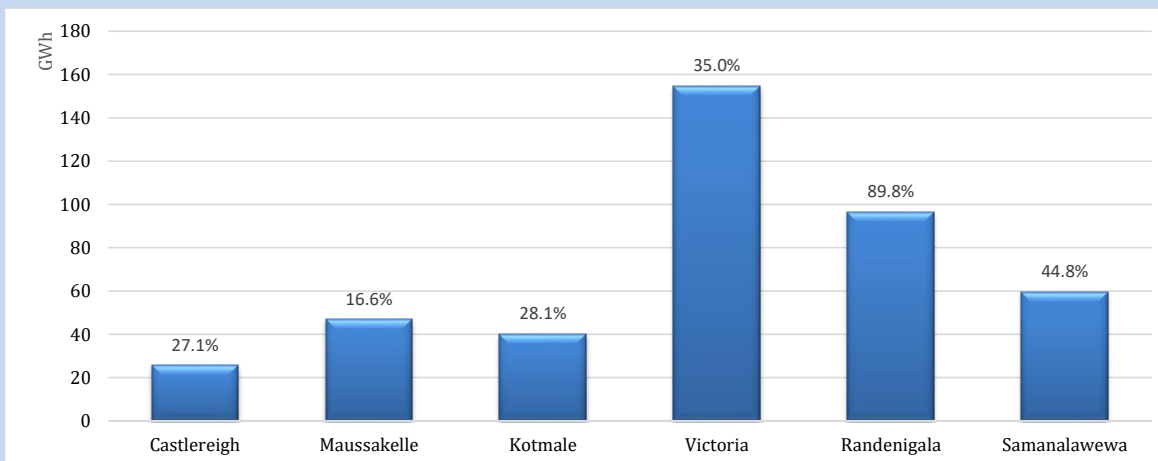


Night Peak*	2,049 MW
Day Peak	1,836 MW
Minimum Demand	1,687 MW

Above figures are excluding contribution from roof top solar, non telemetered solar and mini hydro plants

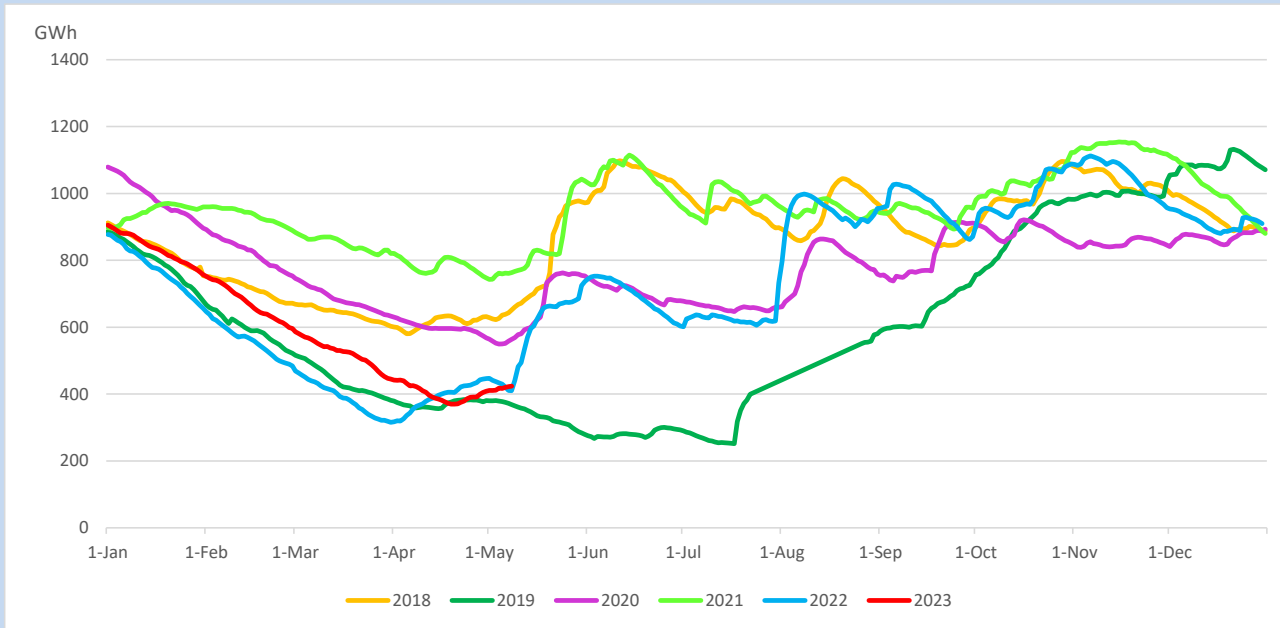
Reservoir Levels -

as at 06.00 Hr on May 10, 2023

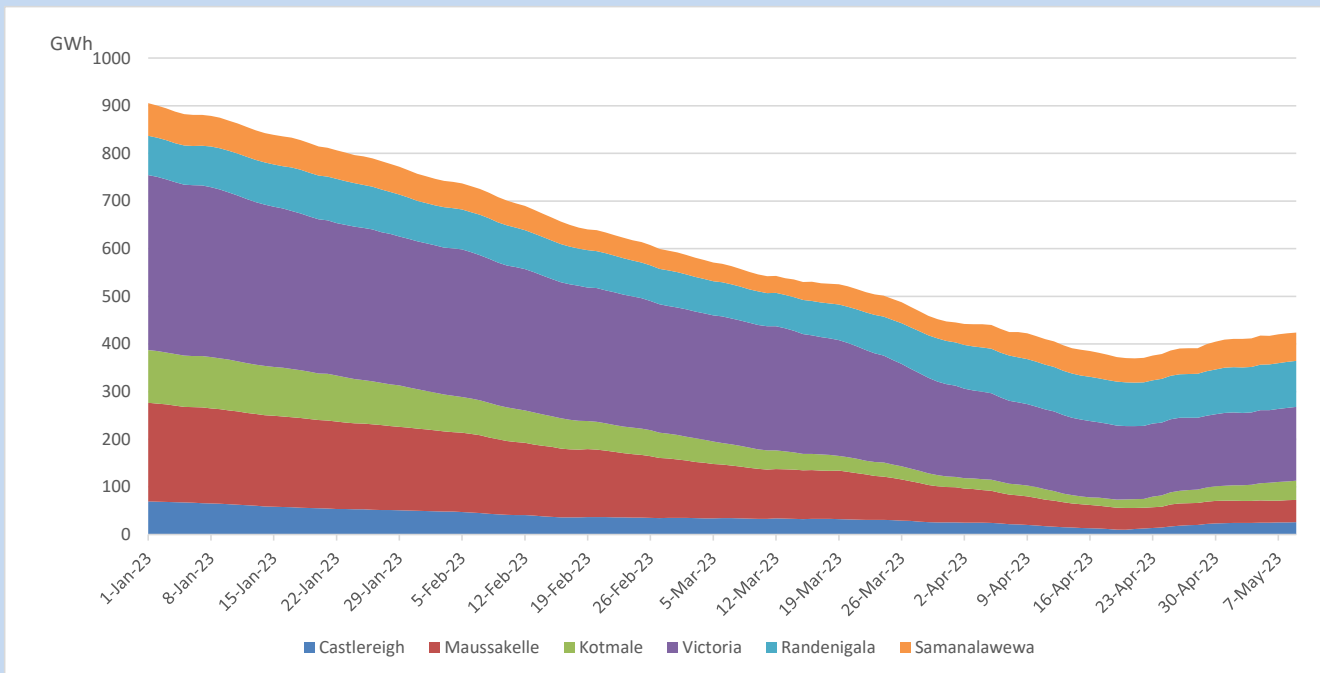


Total Reservoir Level	424.1 GWh
% of Total capacity	35.2%

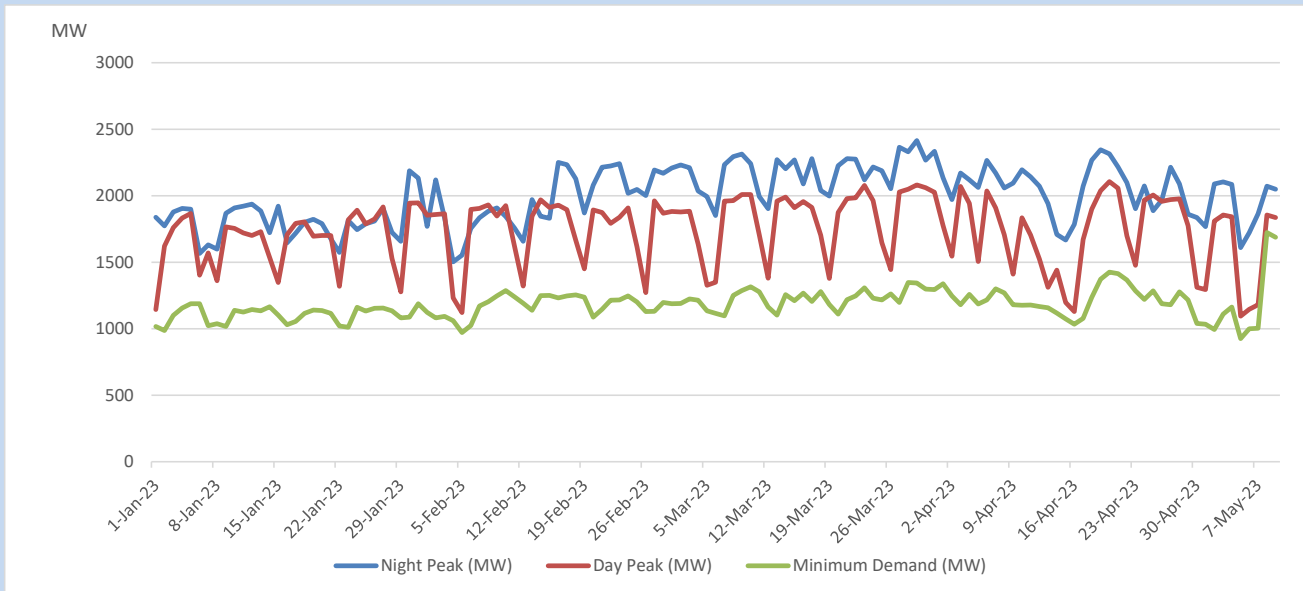
Comparison of Total Reservoir Storage Levels with Past Years



Variation of Major Hydro Reservoir Levels in the current year (GWh)



Variation of Demand during the current year

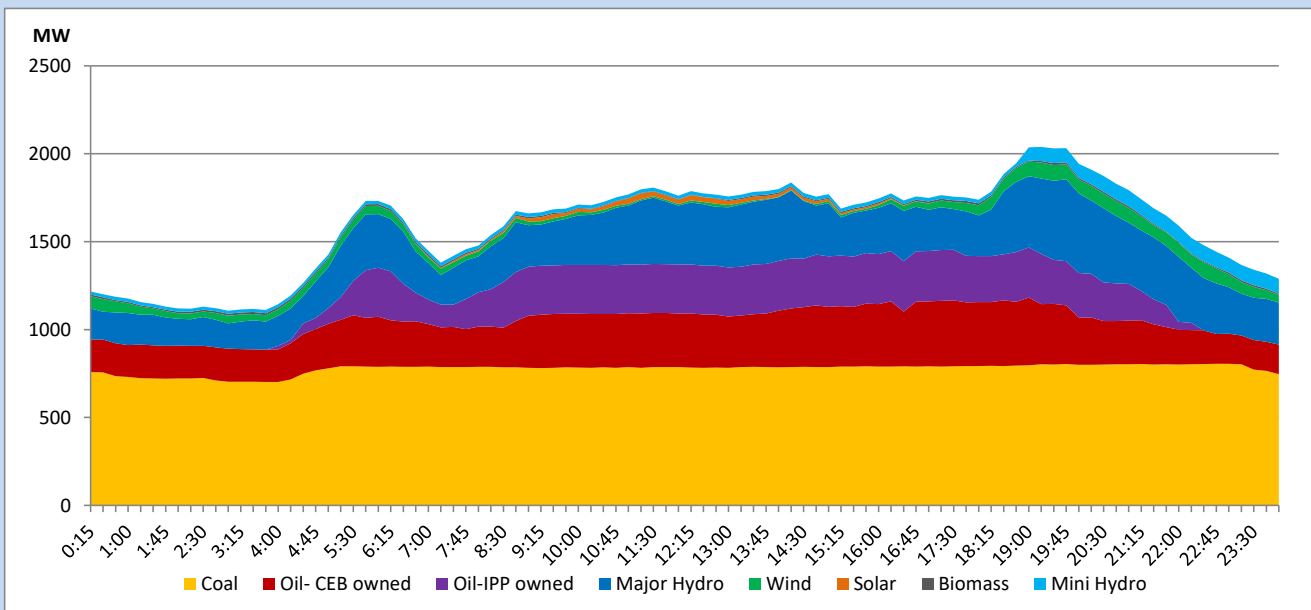


The above figures are excluding contribution from roof top solar, non telemetered solar and mini hydro plants

Daily Load Curve

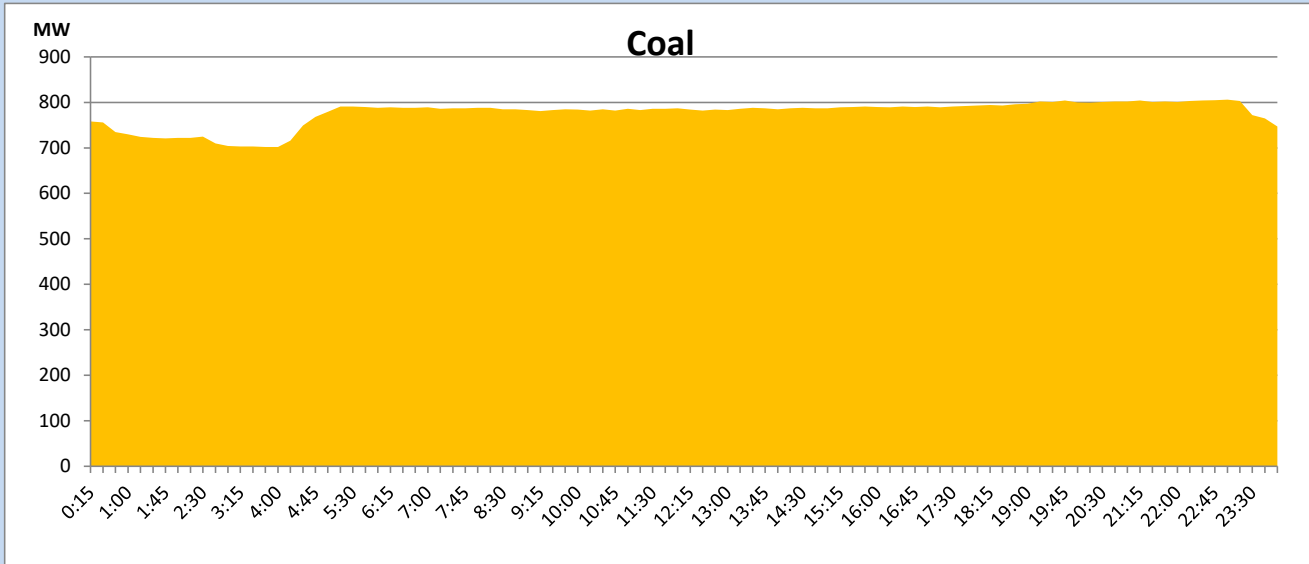
May 9, 2023

Solar and wind data is based on Telemetered Power Stations only



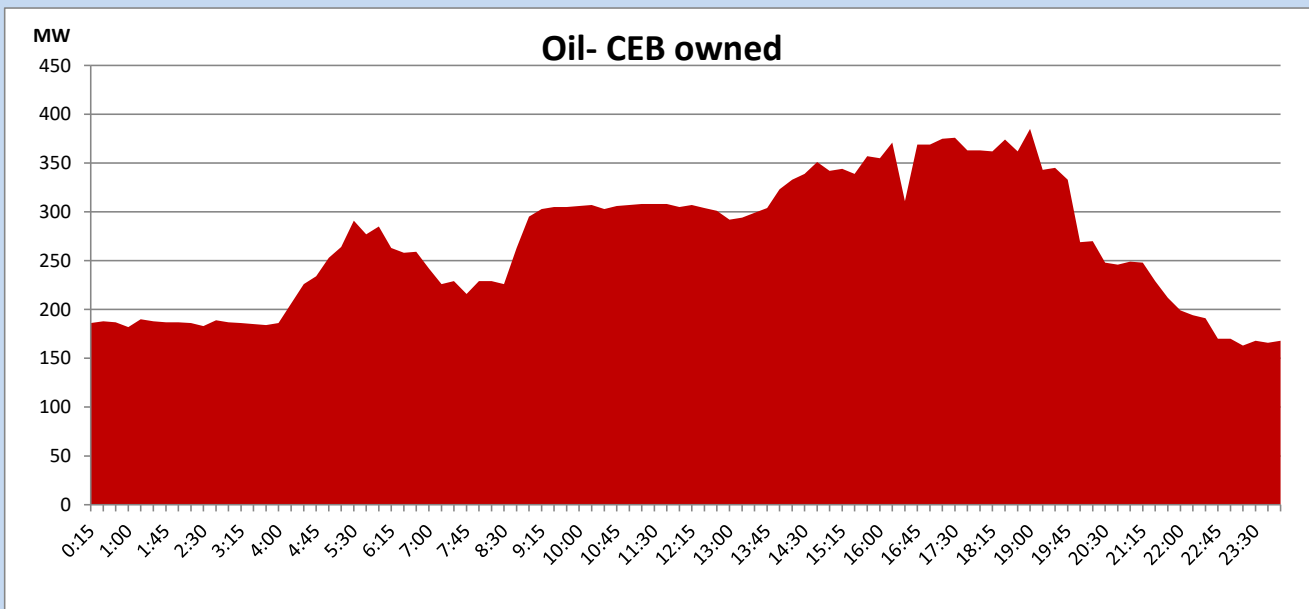
Coal Generation during

May 9, 2023



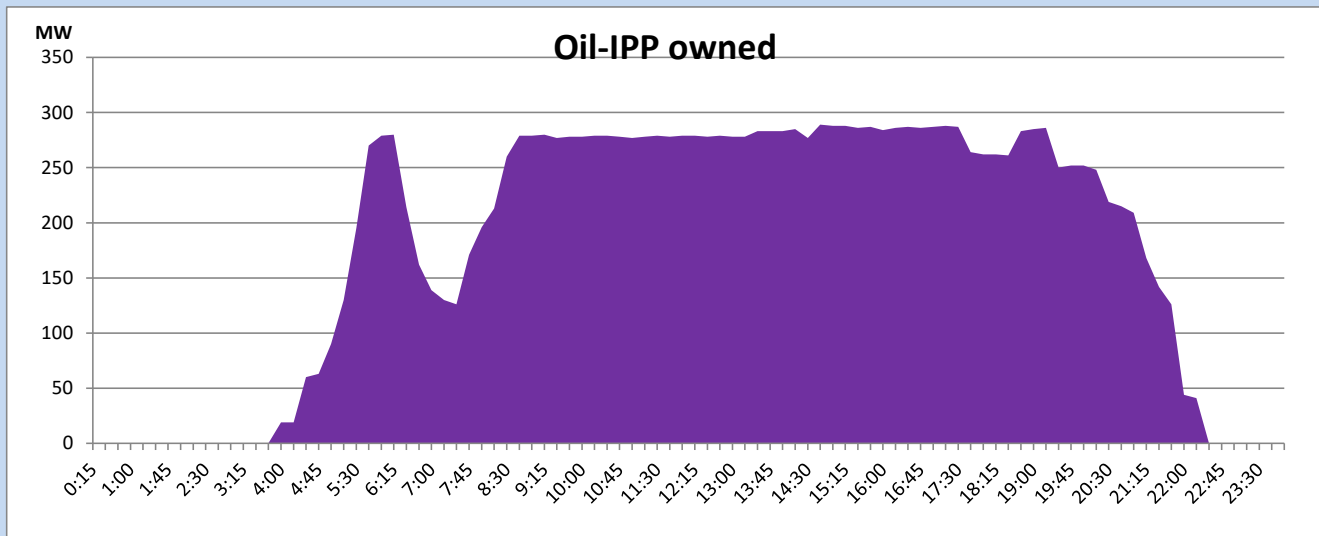
CEB Oil Plant Generation during

May 9, 2023



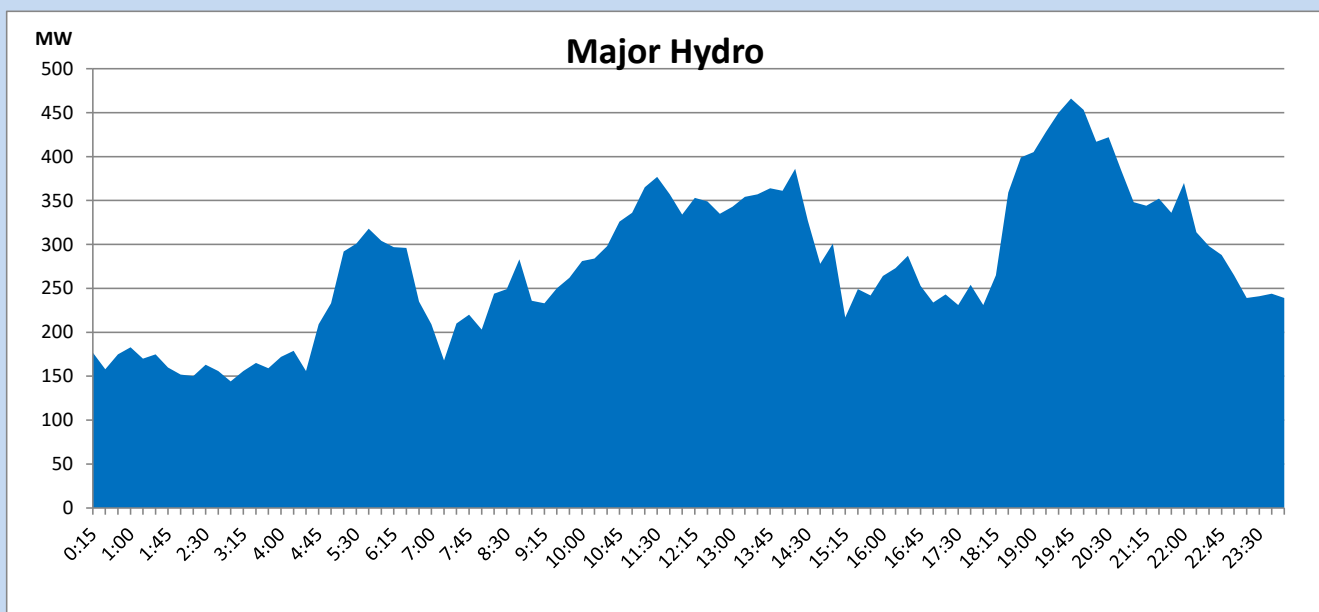
IPP Oil Plant Generation during

May 9, 2023



Major Hydro Generation during

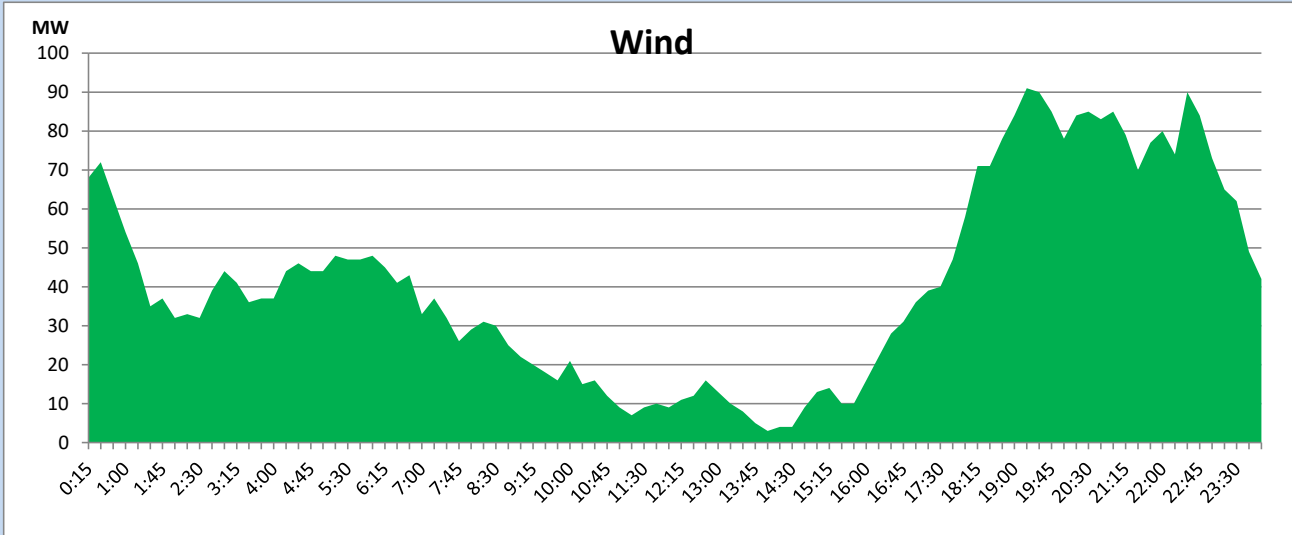
May 9, 2023



Wind Generation during

May 9, 2023

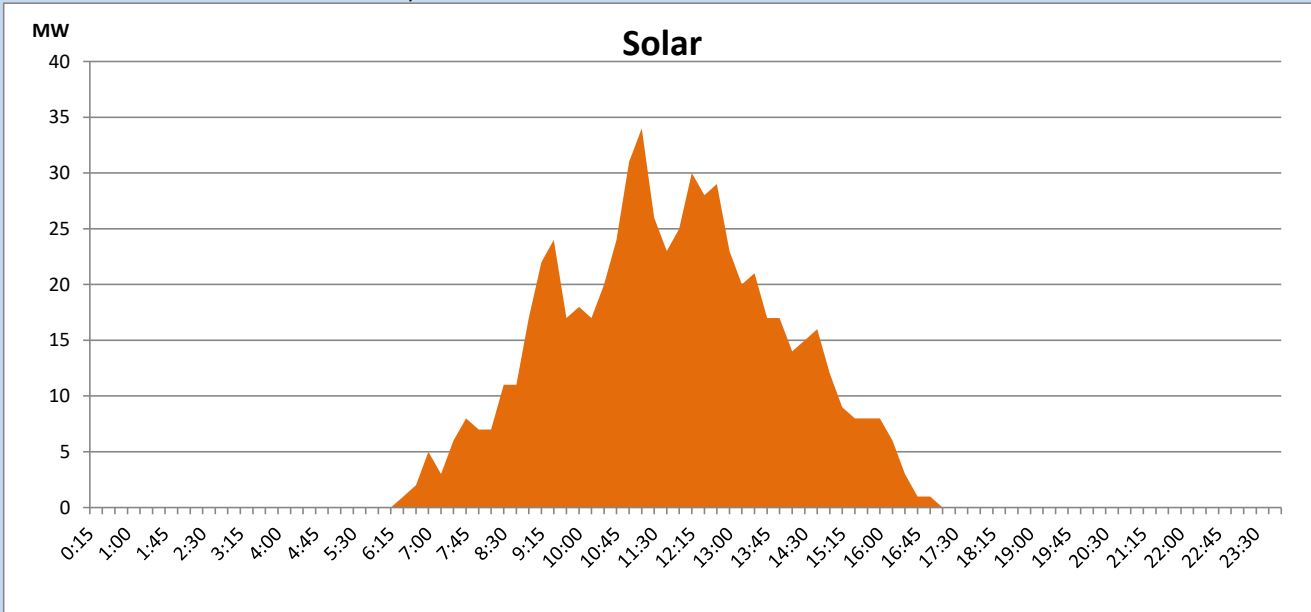
Based on Telemetered Power Stations only



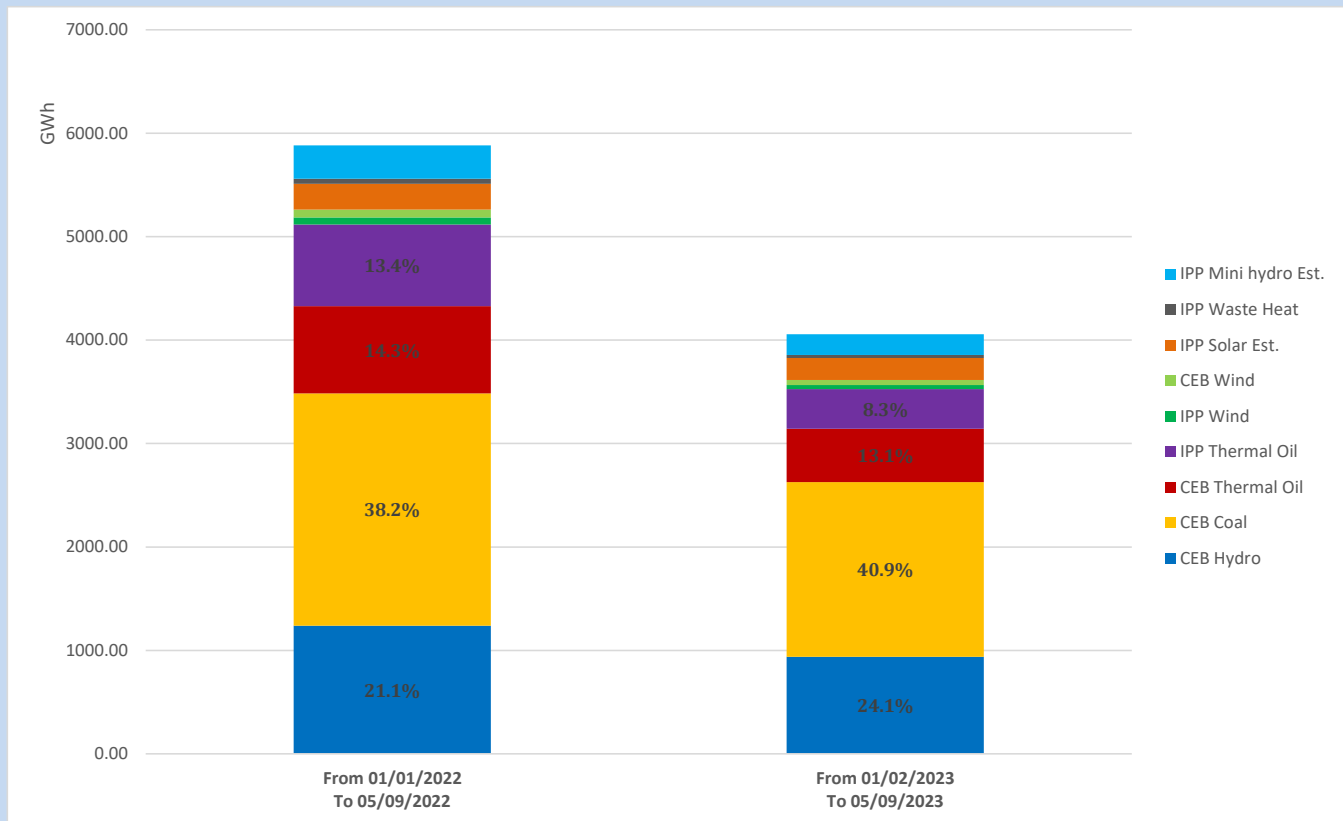
Solar Generation during

May 9, 2023

Based on Telemetered Power Stations only



Cumulative Dispatch Comparison with Last Year



The above figures are including contribution from roof top solar, non telemetered solar and mini hydro plants

Thermal Plant Fuel types

Power Station	Primary Fuel
CEB Thermal	
Sapugaskanda 1	Heavy Fuel
Sapugaskanda 2	Heavy Fuel
Kelanitissa Small Gas Turbines	Auto Diesel
GT 7 - Kelanitissa	Auto Diesel
Kelanitissa CCY	Naphtha or Diesel
Lakvijaya 1	Coal
Lakvijaya 2	Coal
Lakvijaya 3	Coal
Uthuru Janani	Heavy Fuel
Barge CEB	Heavy Fuel

Power Station	Primary Fuel
Private Thermal	
West Coast	Auto Diesel / Heavy Fuel

Major Incidents reported during the day

May 9, 2023

- 1) Biyagama 220/33kV T/F 03 tripped only from 33kV side, causing 33kV bus 01 and associated feeders to be dead. All affected feeders were normalized at 14:48hrs. Biyagama 220/33kV T/F 03 normalized at 16:44hrs.
- 2) KPS GT 02 tripped at 16:13hrs. The unit is yet to be normalized due to diesel line outage.
- 3) Sapugaskanda B unit 03 tripped at 15:29hrs due to a governor fault. The unit made available at 18:01hrs. Sapugaskanda B Unit 07 made unavailable at 05:08hrs (10.09.23) due to starting air leak. The Unit 07 is yet to resume generation.
- 4) Matara 132/33kV T/F 02 tripped at 17:42hrs due to the operation of differential protection. The T/F normalized at 17:55hrs.
- 5) Kukule spilling started at 22:55hrs and spilling stopped at 06:00 hrs (on 10.05.2023).