

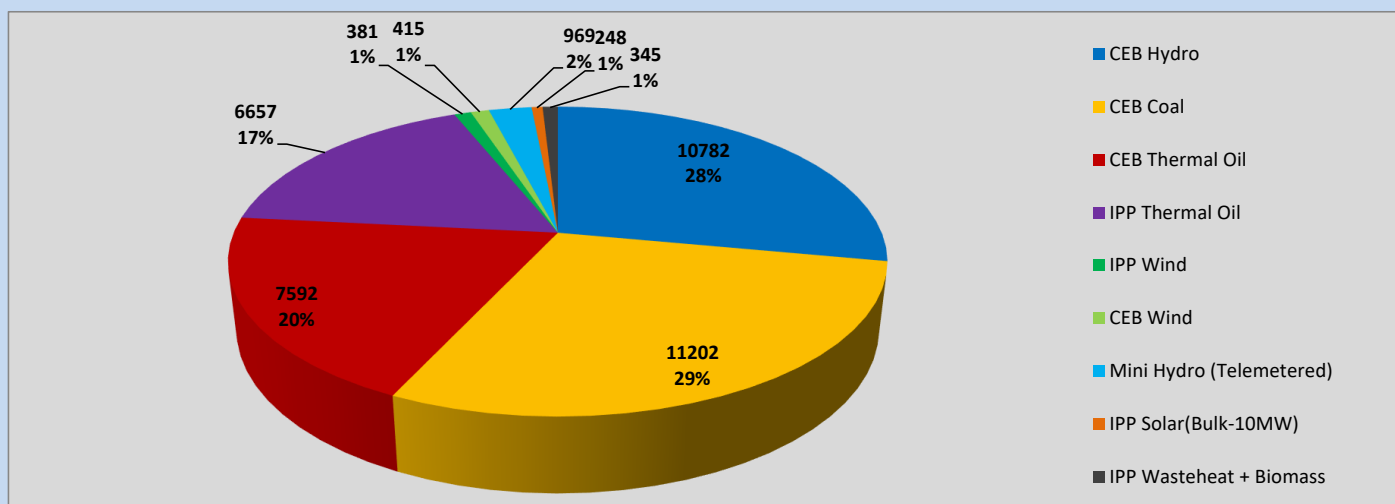
Generation and Reservoirs Statistics

April 8, 2023



PUBLIC UTILITIES COMMISSION OF SRI LANKA

Daily Generation Mix in MWh



Total Generation (Excluding estimated figures) =

38,591 MWh

Estimated figures of CEB generation report

Estimated unserved energy = 0.00 GWh

Estimated Mini Hydro (Non telemetered) = 1411 MWh

Estimated IPP Solar PV (Bulk 1-10MW) = 304 MWh

Estimated Solar Roof Top PV = 1640 MWh

Cumulative Dispatch

Following data excludes the contribution from roof top solar, non telemetered solar and mini hydro plants

For Current Month

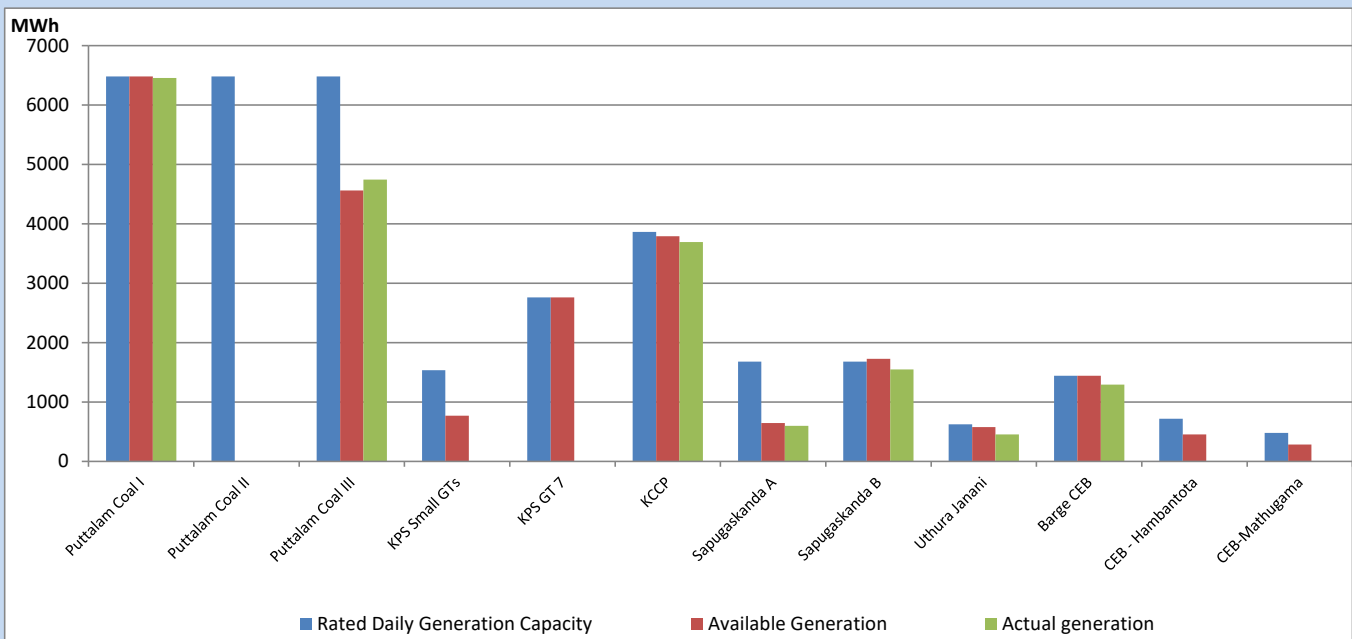
Category	Dispatch (GWh)	
CEB Hydro	100	31.92%
CEB Coal	102	32.46%
CEB Thermal Oil	46	14.70%
IPP Thermal	48	15.20%
SPP Wind	2	0.65%
CEB Wind	3	0.82%
Mini Hydro (Telemetered)	8	2.54%
IPP Solar (Bulk-10MW)	3	0.89%
IPP Wasteheat + BMP	3	0.83%
Total	314	

For Current Year

Category	Dispatch (GWh)	
CEB Hydro	1,022	27.39%
CEB Coal	1,625	43.55%
CEB Thermal Oil	516	13.84%
IPP Thermal	318	8.52%
SPP Wind	53	1.42%
CEB Wind	63	1.68%
Mini Hydro (Telemetered)	77	2.06%
IPP Solar (Bulk-10MW)	28	0.76%
IPP Wasteheat	29	0.77%
Total	3,730	

CEB owned Thermal Plant Dispatch

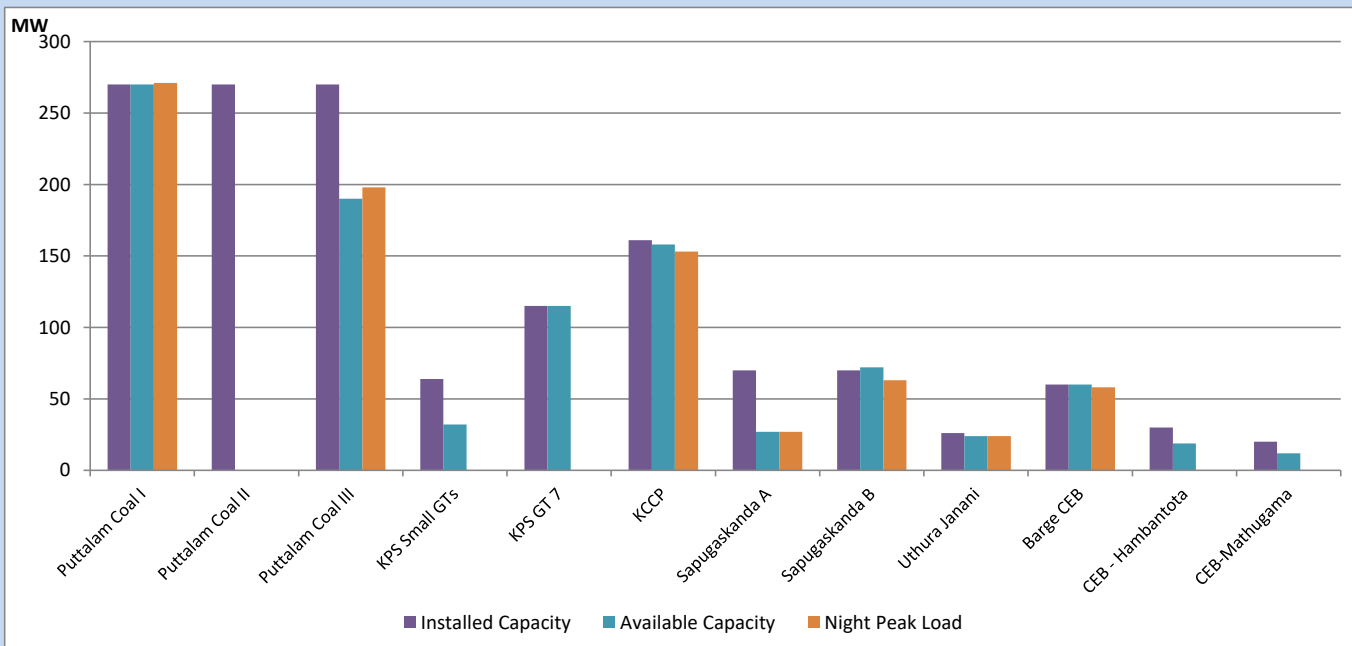
April 8, 2023



Available Generation is estimated based on plant availability at 6.00am on

April 9, 2023

CEB owned Thermal Plant Loading at the Night Peak

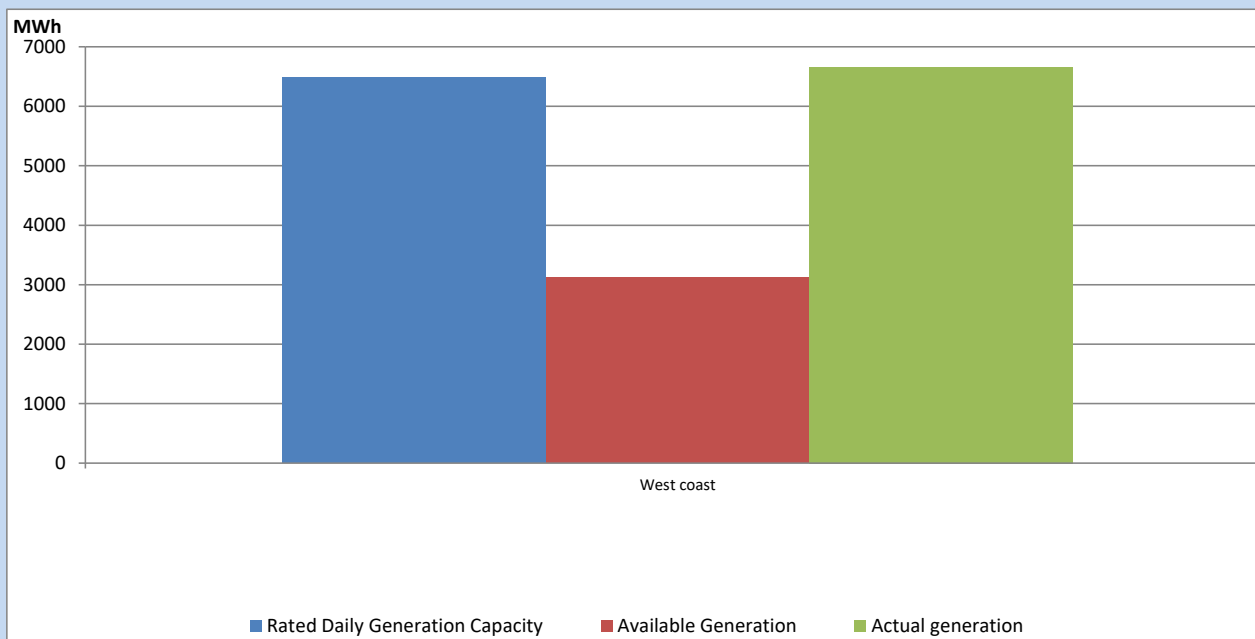


Note- Plant avilability is recorded at 6.00 am on

April 9, 2023

IPP owned Thermal Plant Dispatch

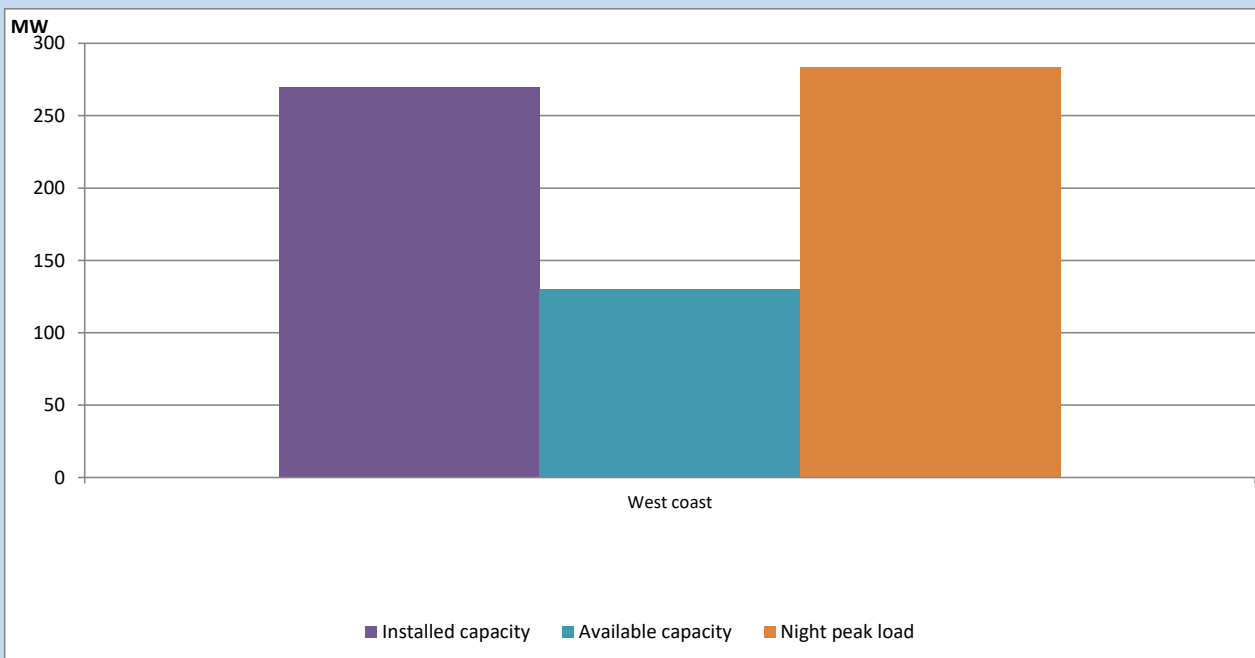
April 8, 2023



Available Generation is estimated based on plant availability at 6.00am on

April 9, 2023

IPP owned Thermal Plant Loading at the Night Peak

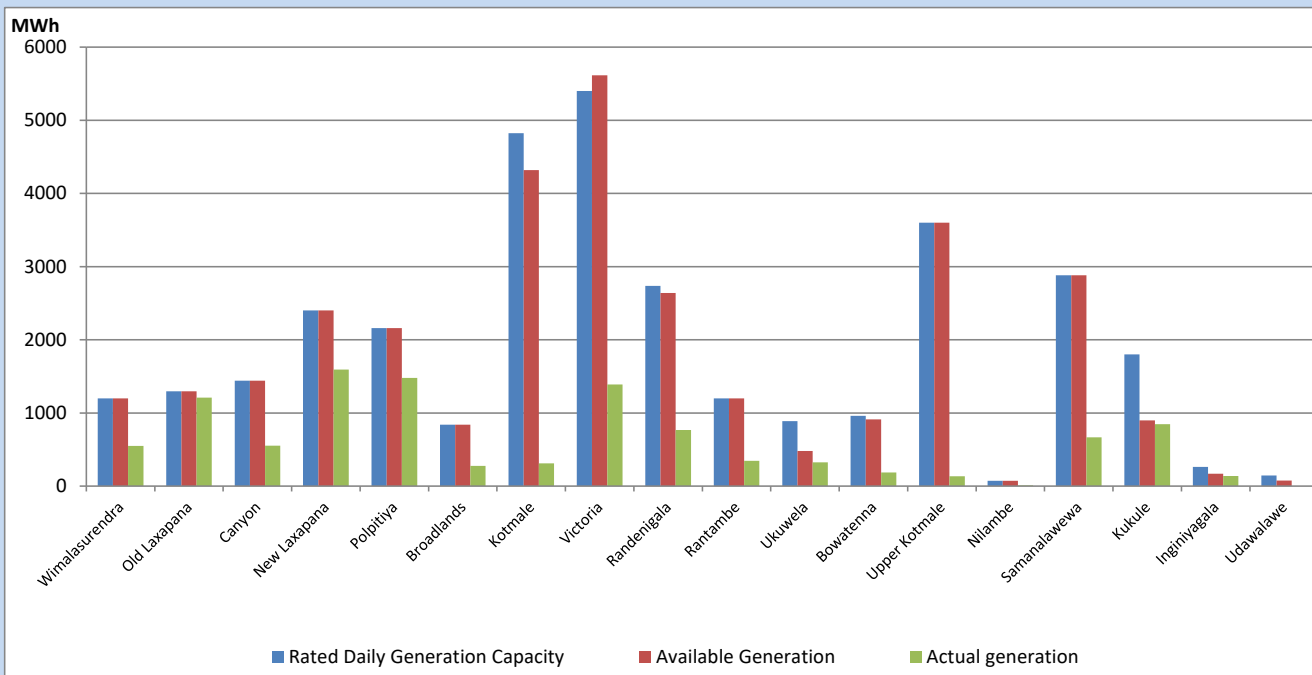


Note- Plant availability is recorded at 6.00 am on

April 9, 2023

Major Hydro Plant Dispatch

April 8, 2023

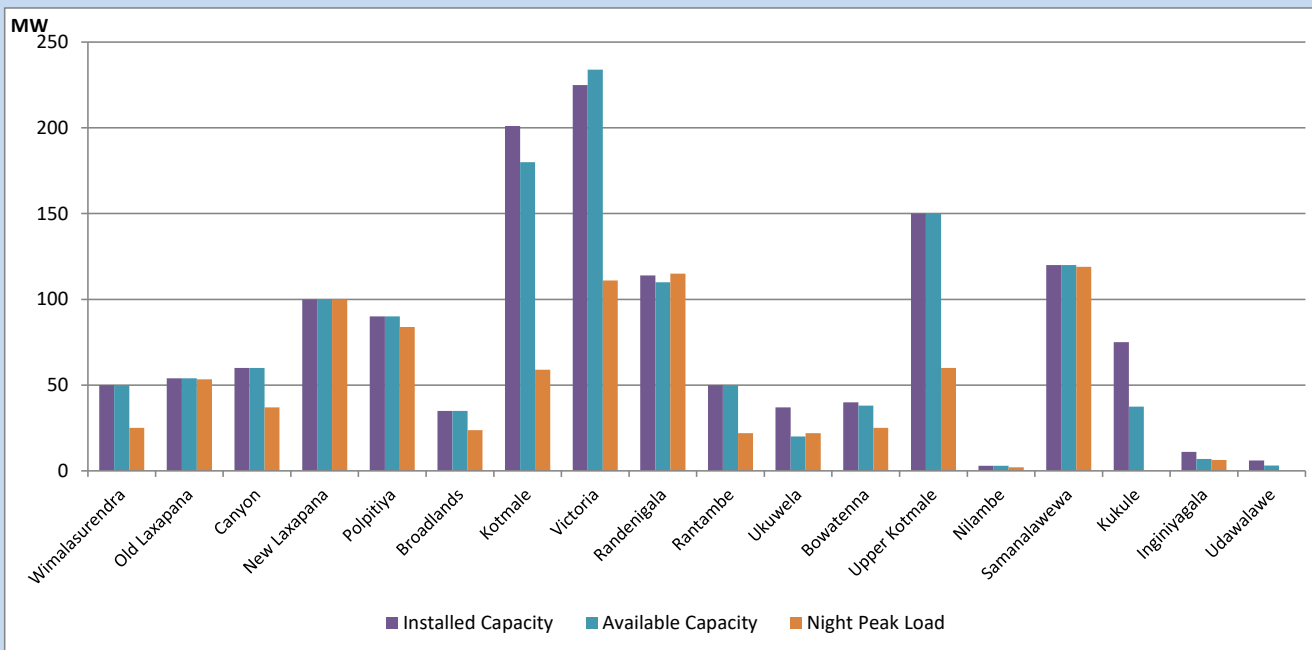


Available Generation is estimated based on plant availability at 6.00am on
Broadlands power plant is operating in the Commissioning Stage

April 9, 2023

Major Hydro Plant Loading at Night Peak

April 8, 2023



Note- Plant availability is recorded at 6.00 am on
Broadlands power plant is operating in the Commissioning Stage

April 9, 2023

Summary of Major Plant performance

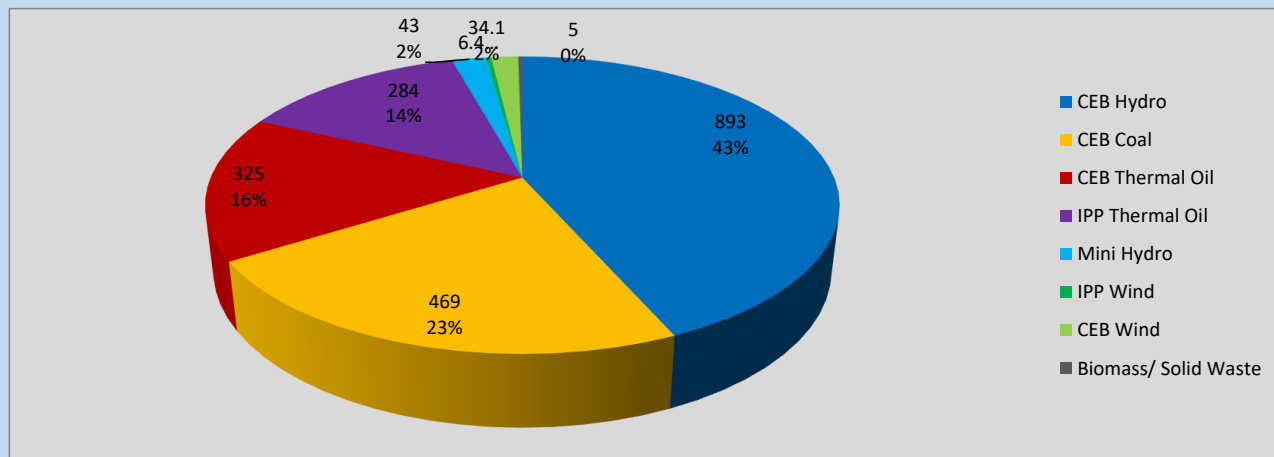
Plant	Installed Capacity	Plant Availability	Night peak Load	Plant Dispatch
	(MW)	(MW)	(MW)	(MWh)
Wimalasurendra	50	50	25	551
Old Laxapana	54	54	53	1,208
Canyon	60	60	37	554
New Laxapana	100	100	100	1,594
Polpitiya	90	90	84	1,480
Broadlands	35	35	24	278
Kotmale	201	180	59	310
Victoria	225	234	111	1,390
Randenigala	114	110	115	767
Rantambe	50	50	22	346
Ukuwela	37	20	22	323
Bowatenna	40	38	25	185
Upper Kotmale	150	150	60	135
Nilambe	3	3	2	10
Samanalawewa	120	120	119	668
Kukule	75	38	0	845
Inginiyagala	11	7	6	138
Udawalawe	6	3	0	0
Puttalam Coal I	270	270	271	6,457
Puttalam Coal II	270	0	0	0
Puttalam Coal III	270	190	198	4,745
KPS Small GTs	64	32	0	0
KPS GT 7	115	115	0	0
KCCP	161	158	153	3,694
Sapugaskanda A	70	27	27	601
Sapugaskanda B	70	72	63	1,549
Uthura Janani	26	24	24	453
Barge CEB	60	60	58	1,295
CEB-Hambantota	30	19	0	0
CEB-Mathugama	20	12	0	0
ACE Matara	24	0	0	0
Asia Power	50	0	0	0
Sojitz Kelanitissa	163	0	0	0
West Coast	270	130	284	6,657
Nothern Power	36	0	0	0
ACE Embilipitiya	93	0	0	0
Total	3,483	2,450	2,031	38,591

Plant availability is the availability recorded at 6 am on

April 9, 2023

Contribution to the Night Peak in MW

April 8, 2023

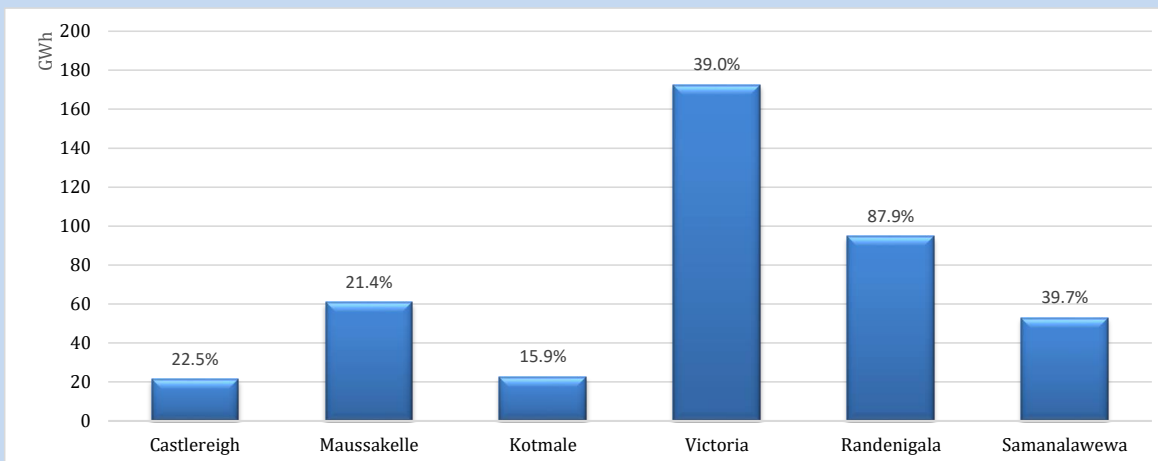


Night Peak*	2,059 MW
Day Peak	1,707 MW
Minimum Demand	1,270 MW

Above figures are excluding contribution from roof top solar, non telemetered solar and mini hydro plants

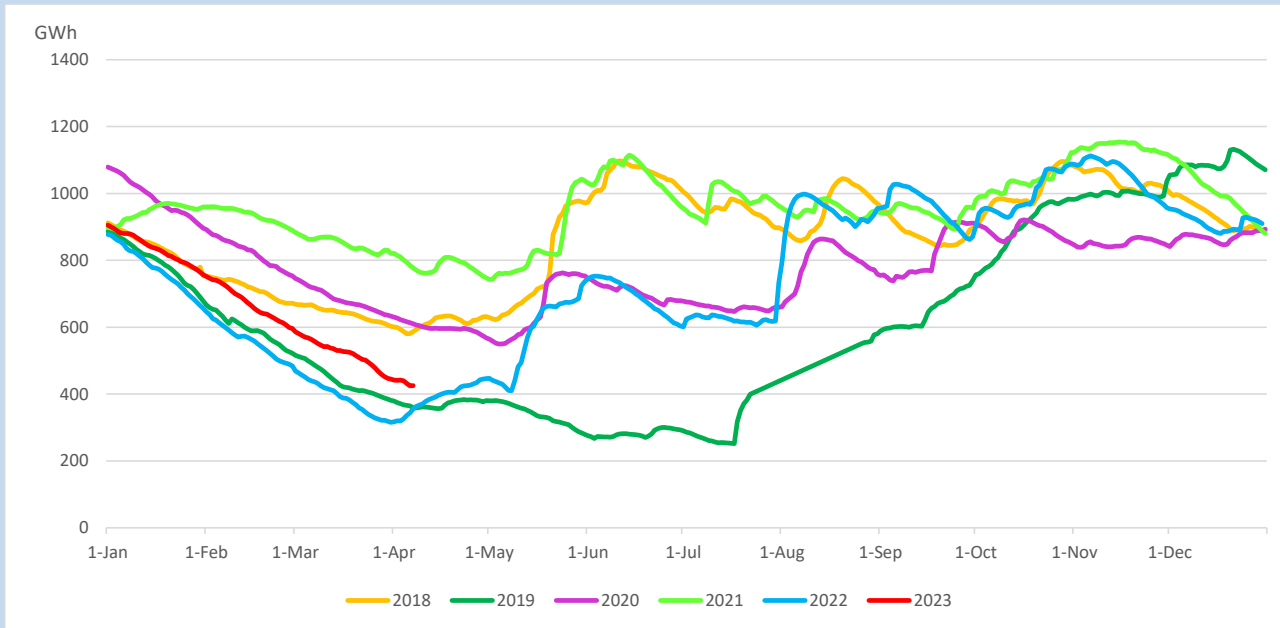
Reservoir Levels -

as at 06.00 Hr on April 9, 2023

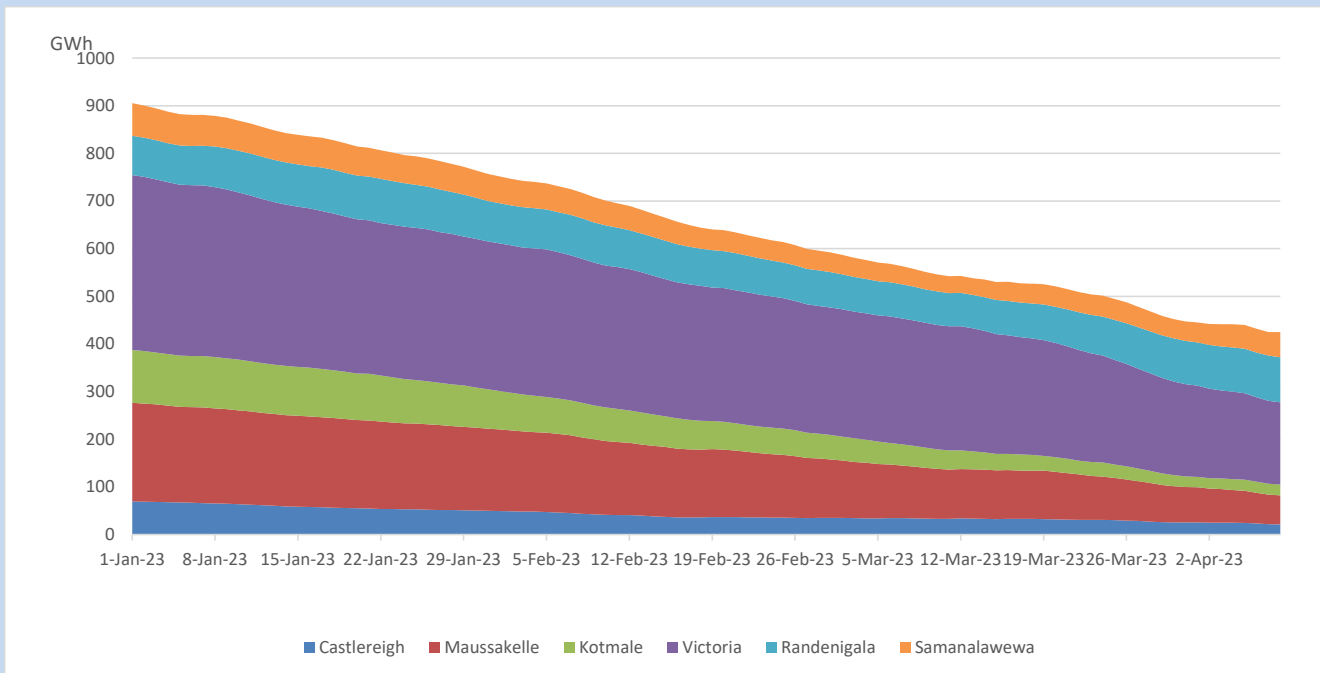


Total Reservoir Level	424.9 GWh
% of Total capacity	35.3%

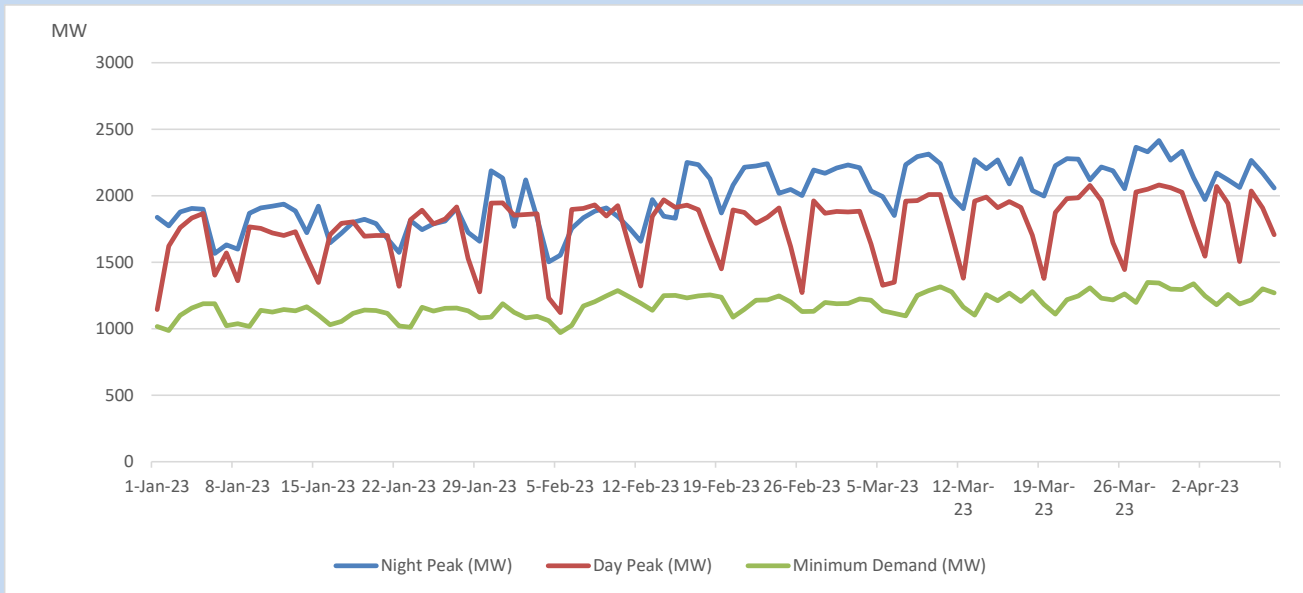
Comparison of Total Reservoir Storage Levels with Past Years



Variation of Major Hydro Reservoir Levels in the current year (GWh)



Variation of Demand during the current year

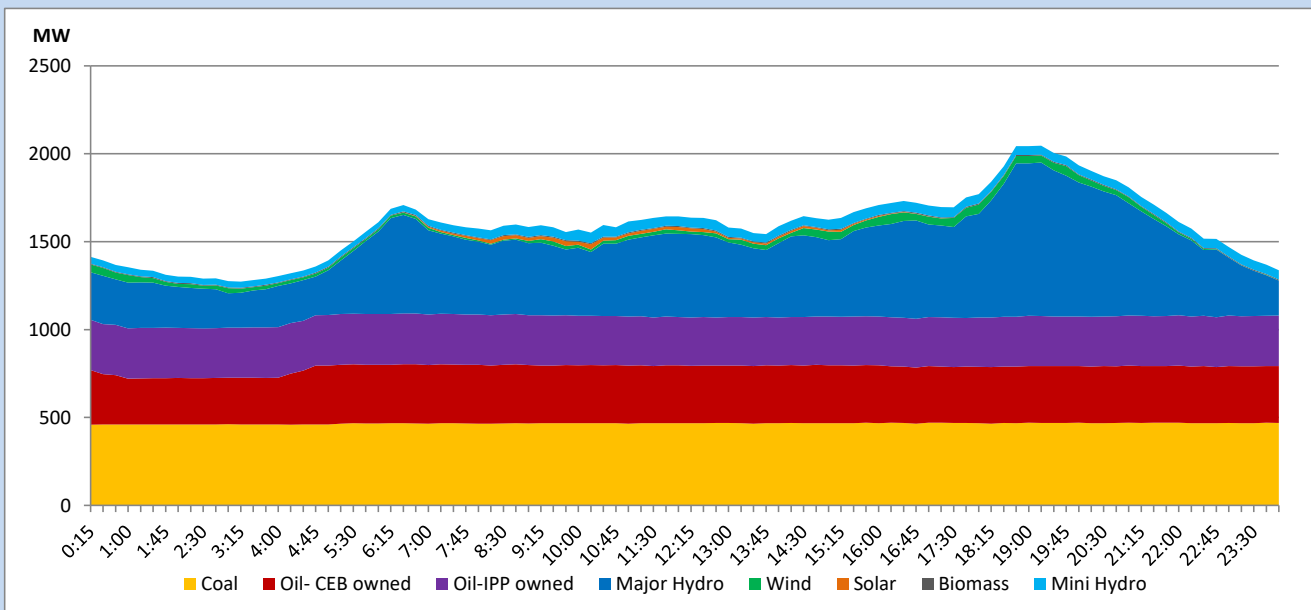


The above figures are excluding contribution from roof top solar, non telemetered solar and mini hydro plants

Daily Load Curve

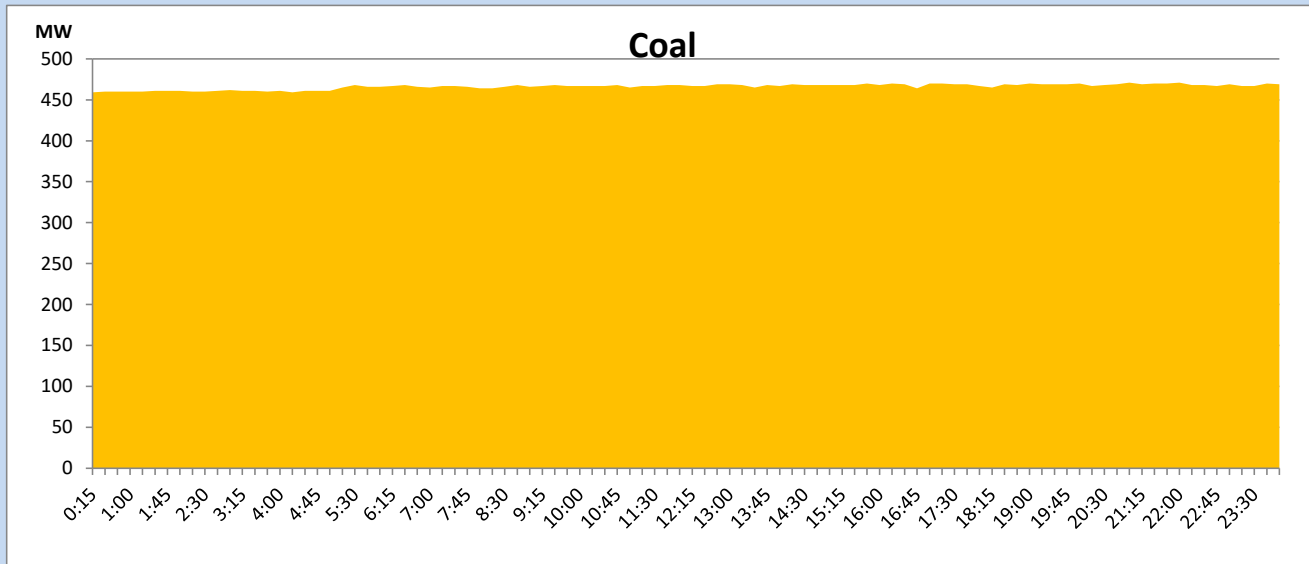
April 8, 2023

Solar and wind data is based on Telemetered Power Stations only



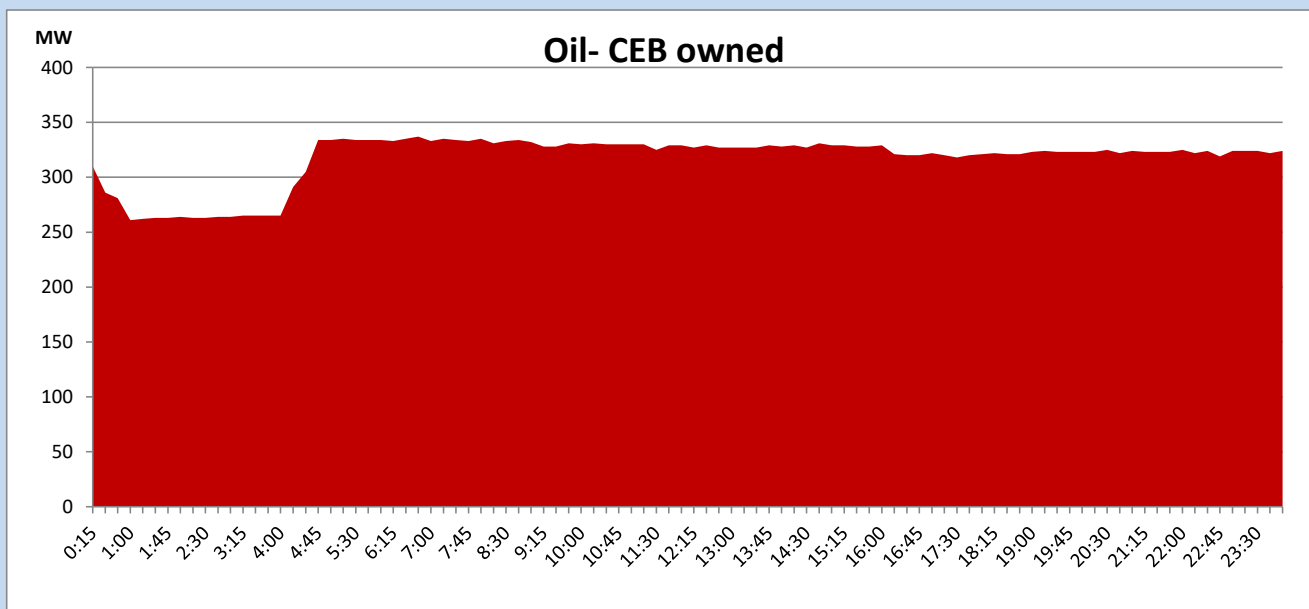
Coal Generation during

April 8, 2023



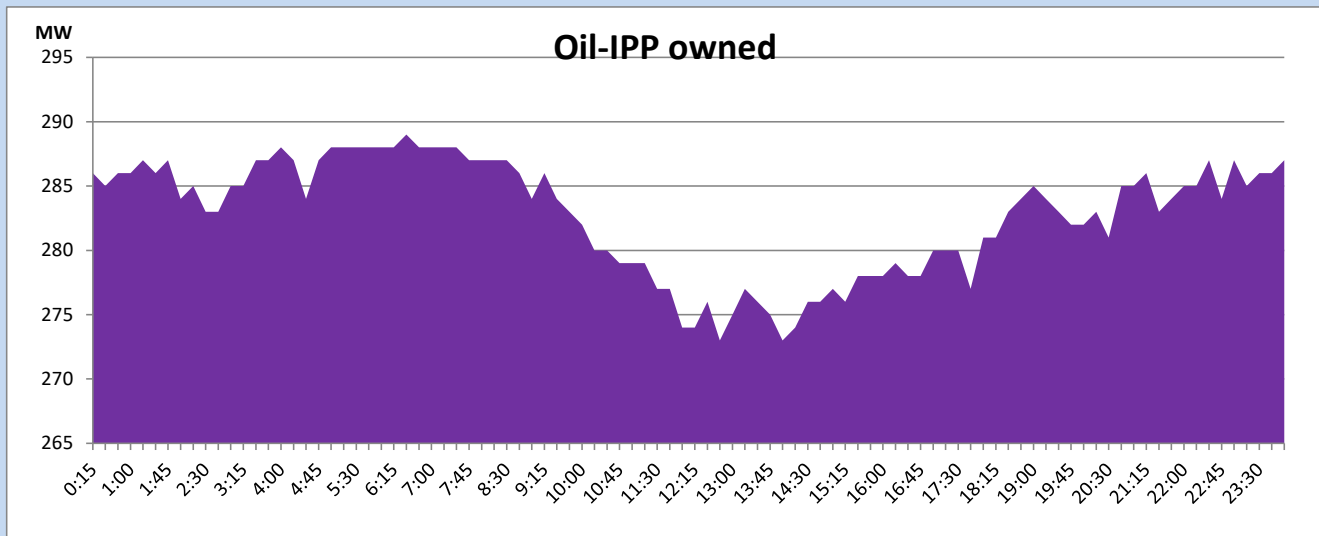
CEB Oil Plant Generation during

April 8, 2023



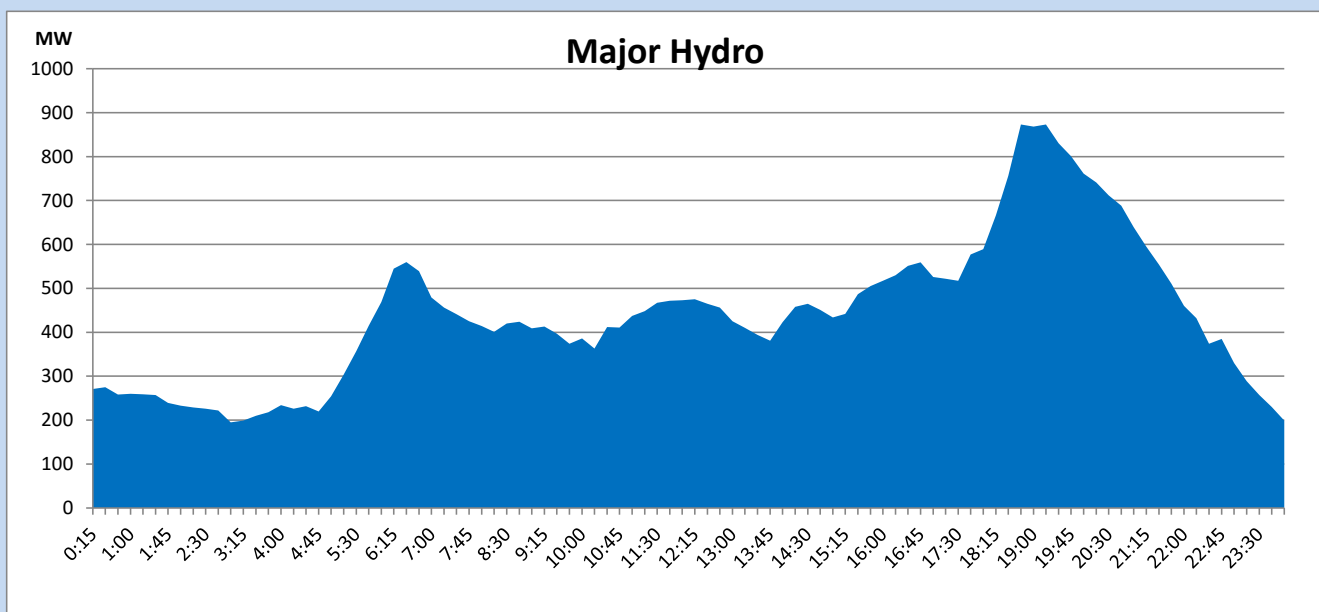
IPP Oil Plant Generation during

April 8, 2023



Major Hydro Generation during

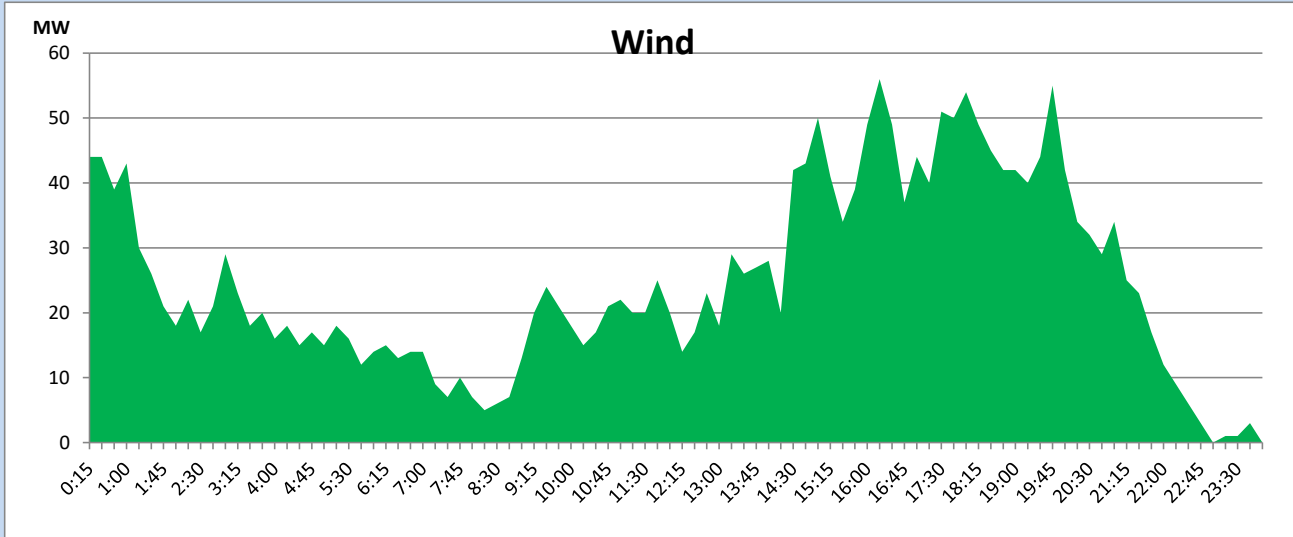
April 8, 2023



Wind Generation during

April 8, 2023

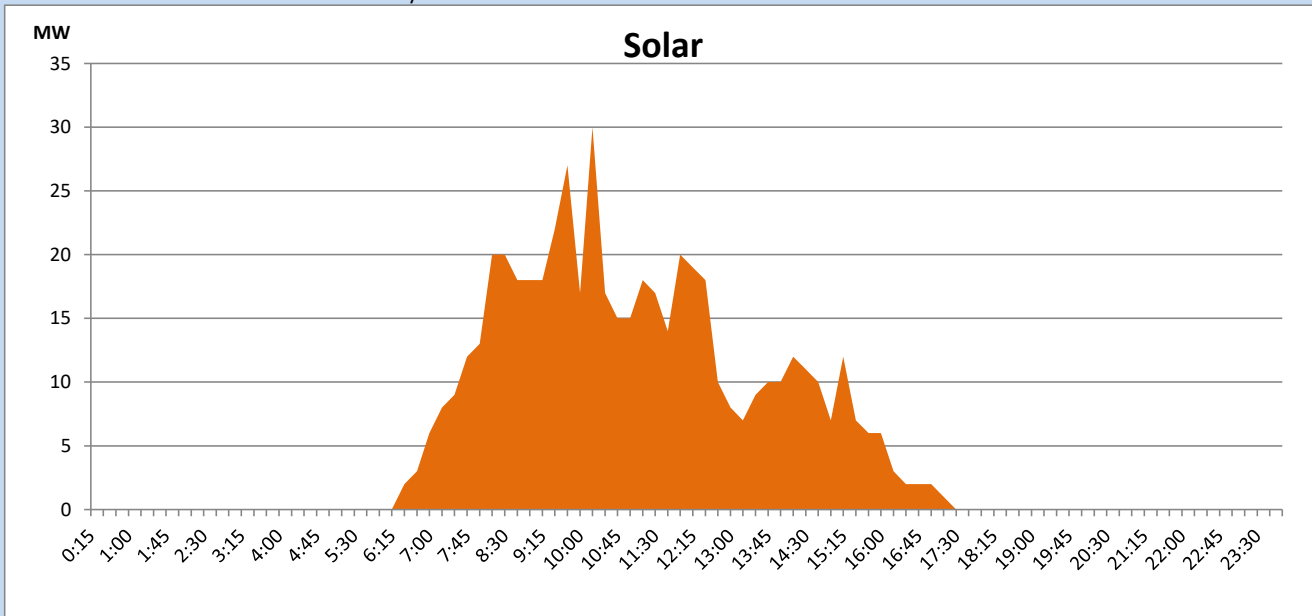
Based on Telemetered Power Stations only



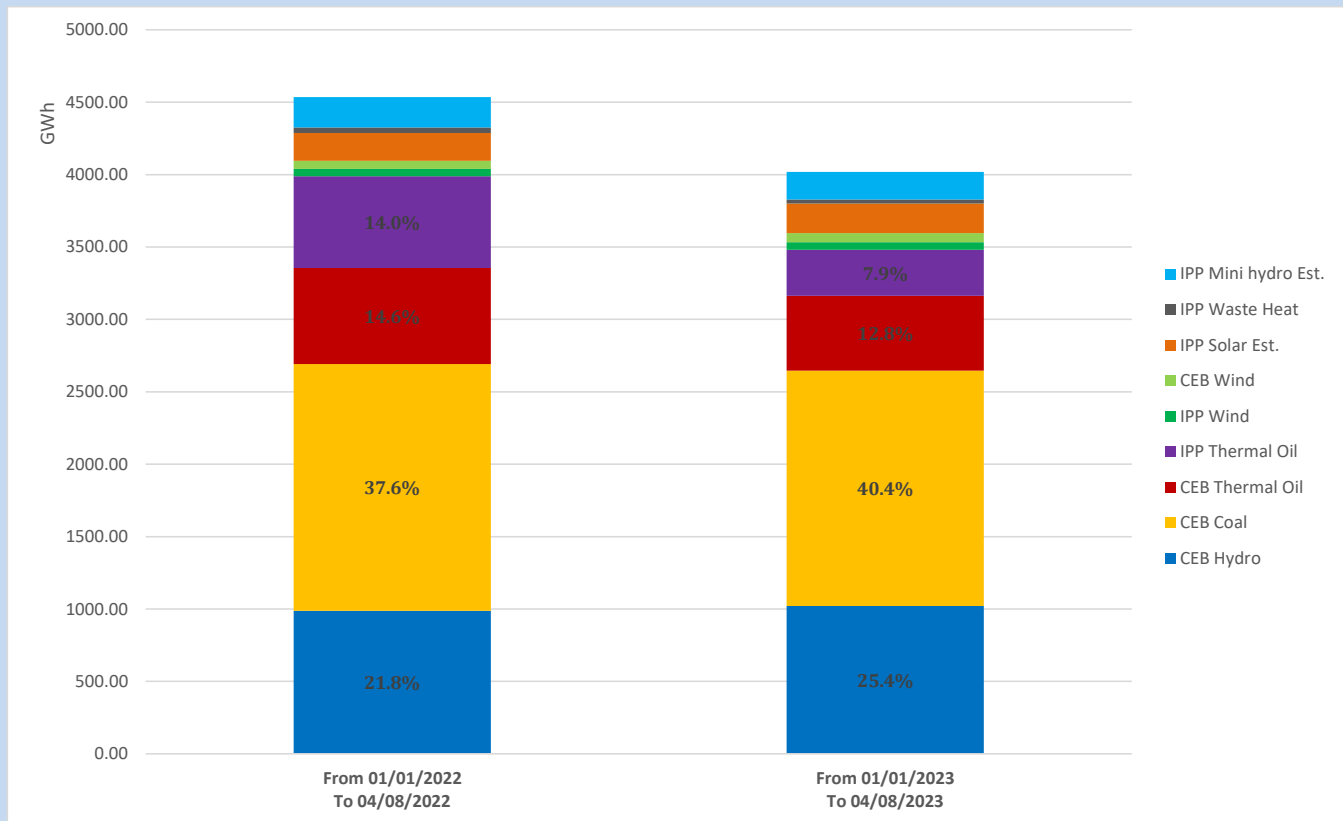
Solar Generation during

April 8, 2023

Based on Telemetered Power Stations only



Cumulative Dispatch Comparison with Last Year



The above figures are including contribution from roof top solar, non telemetered solar and mini hydro plants

Thermal Plant Fuel types

Power Station	Primary Fuel
CEB Thermal	
Sapugaskanda 1	Heavy Fuel
Sapugaskanda 2	Heavy Fuel
Kelanitissa Small Gas Turbines	Auto Diesel
GT 7 - Kelanitissa	Auto Diesel
Kelanitissa CCY	Naphtha or Diesel
Lakvijaya 1	Coal
Lakvijaya 2	Coal
Lakvijaya 3	Coal
Uthuru Janani	Heavy Fuel
Barge CEB	Heavy Fuel

Power Station	Primary Fuel
Private Thermal	
West Coast	Auto Diesel / Heavy Fuel

Major Incidents reported during the day

April 8, 2023

- 1) Sapugaskanda - B Generator 05 tripped at 16:10hrs rejecting 9MW from the system. Sapugaskanda - B Generator 05 resumed generation at 03:20hrs (09.04.2023).
- 2) Kukule unit 01 tripped at 18:50hrs rejecting 26MW from the system without having proper indication. Kukule unit 01 resumed generation at 19:17hrs.