

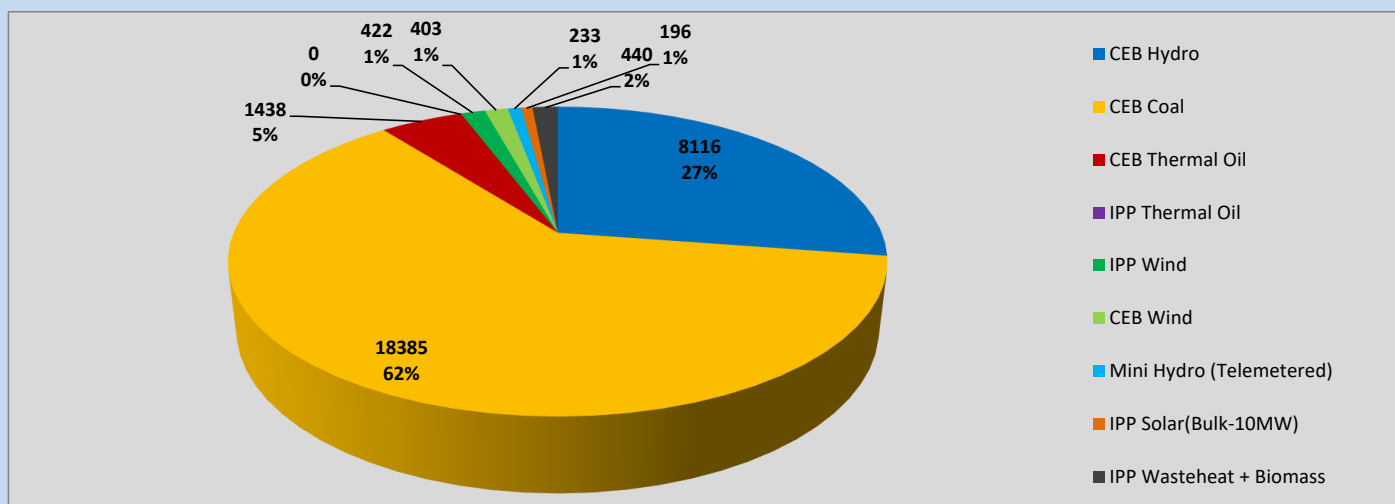
# Generation and Reservoirs Statistics

May 7, 2023



PUBLIC UTILITIES COMMISSION OF SRI LANKA

## Daily Generation Mix in MWh



Total Generation (Excluding estimated figures) =

29,633 MWh

### Estimated figures of CEB generation report

Estimated unserved energy = 0.00 GWh

Estimated Mini Hydro (Non telemetered) = 3757 MWh

Estimated IPP Solar PV (Bulk 1-10MW) = 304 MWh

Estimated Solar Roof Top PV = 1920 MWh

## Cumulative Dispatch

Following data excludes the contribution from roof top solar, non telemetered solar and mini hydro plants

### For Current Month

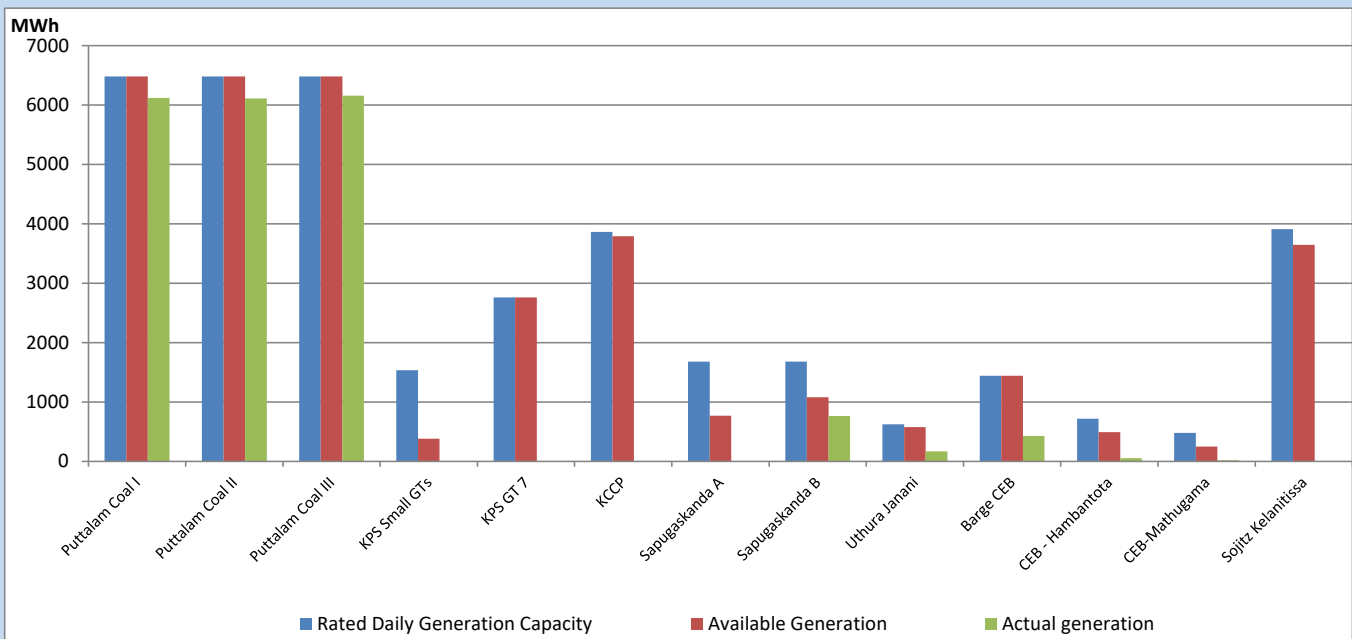
Category	Dispatch (GWh)	
CEB Hydro	51	21.82%
CEB Coal	129	55.63%
CEB Thermal Oil	23	9.76%
IPP Thermal	14	5.80%
SPP Wind	3	1.24%
CEB Wind	3	1.20%
Mini Hydro (Telemetered)	7	2.88%
IPP Solar(Bulk-10MW)	2	0.72%
IPP Wasteheat + BMP	2	0.94%
<b>Total</b>	<b>233</b>	

### For Current Year

Category	Dispatch (GWh)	
CEB Hydro	1,252	26.16%
CEB Coal	2,116	44.21%
CEB Thermal Oil	678	14.16%
IPP Thermal	431	9.00%
SPP Wind	61	1.27%
CEB Wind	73	1.52%
Mini Hydro (Telemetered)	102	2.13%
IPP Solar(Bulk-10MW)	36	0.76%
IPP Wasteheat	37	0.77%
<b>Total</b>	<b>4,787</b>	

## CEB owned Thermal Plant Dispatch

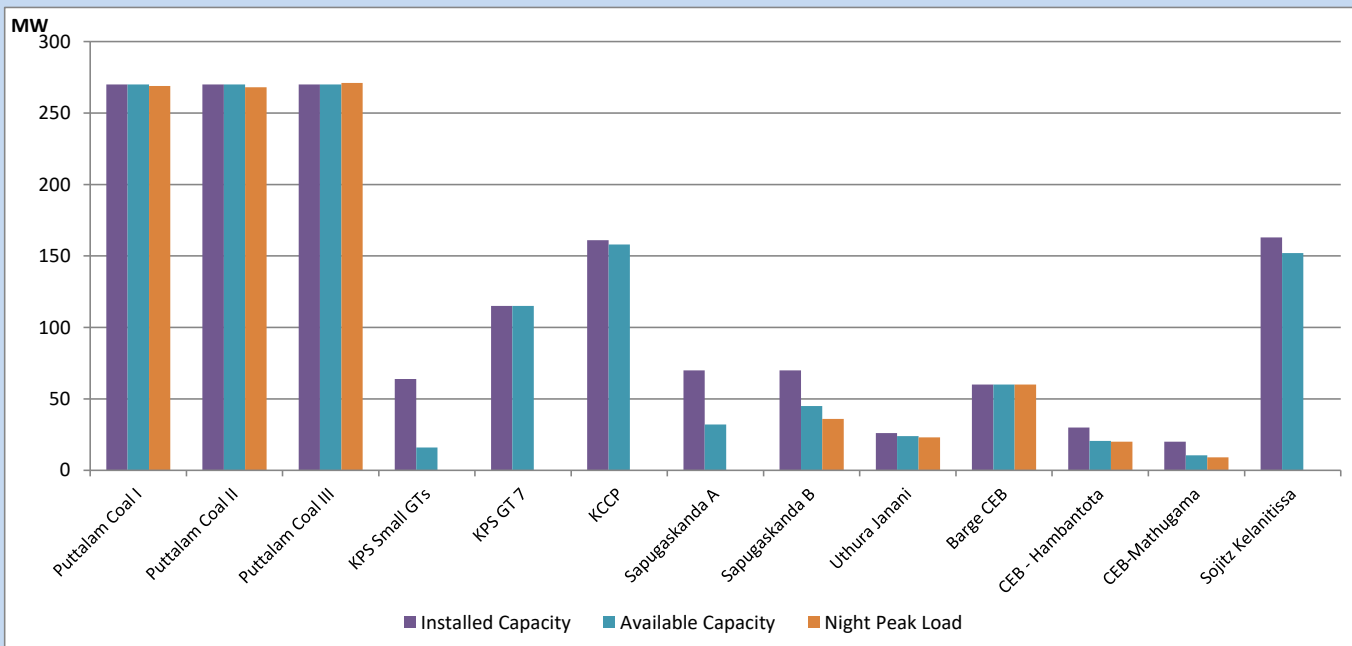
May 7, 2023



Available Generation is estimated based on plant availability at 6.00am on

May 8, 2023

## CEB owned Thermal Plant Loading at the Night Peak



### Note-

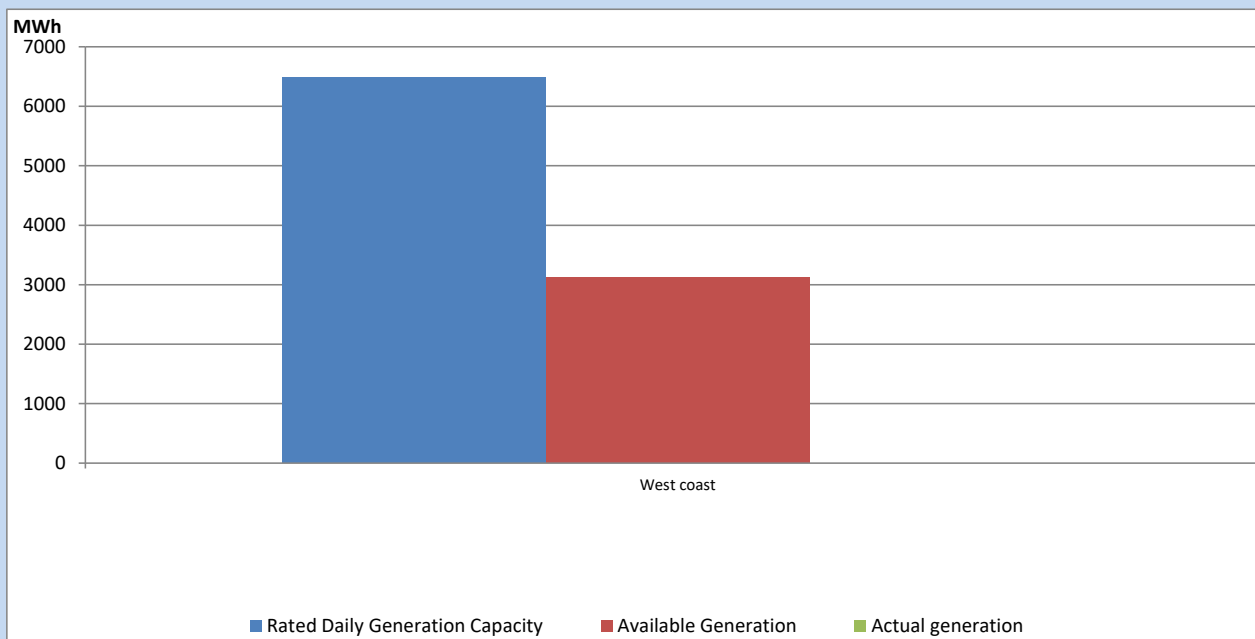
Plant availability is recorded at 6.00 am on

May 8, 2023

Sojitz Kelanitissa Plant is under Testing & Commissioning following to plant transfer procedure to CEB

## IPP owned Thermal Plant Dispatch

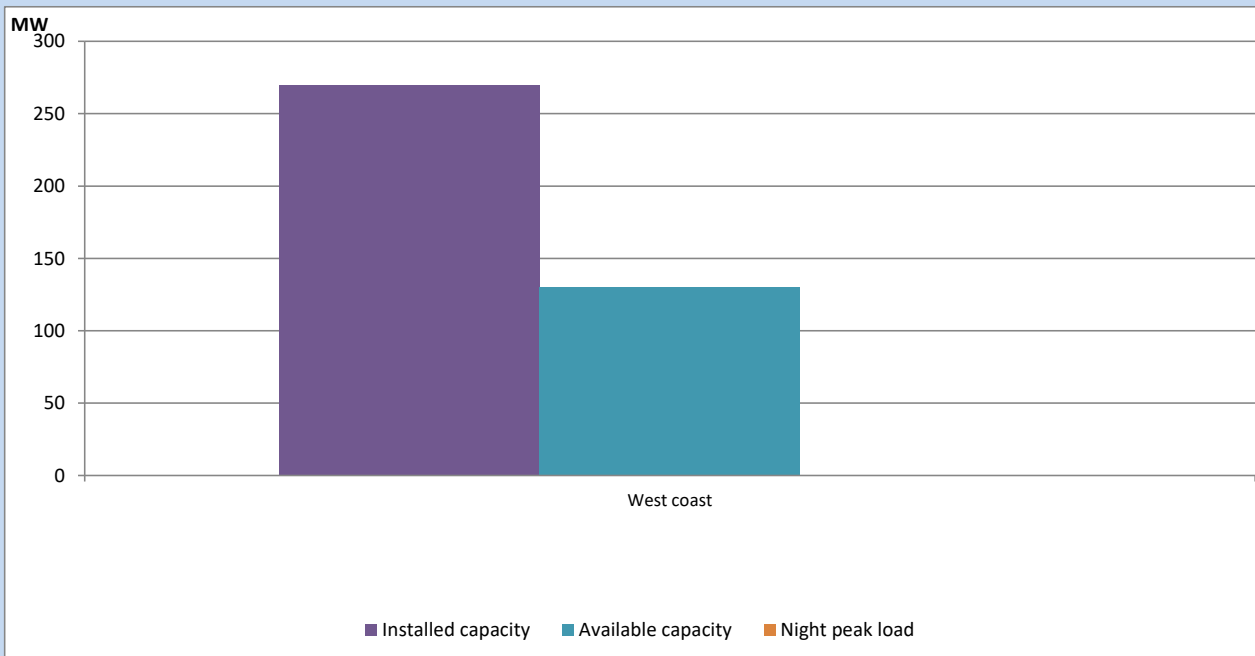
May 7, 2023



Available Generation is estimated based on plant availability at 6.00am on

May 8, 2023

## IPP owned Thermal Plant Loading at the Night Peak

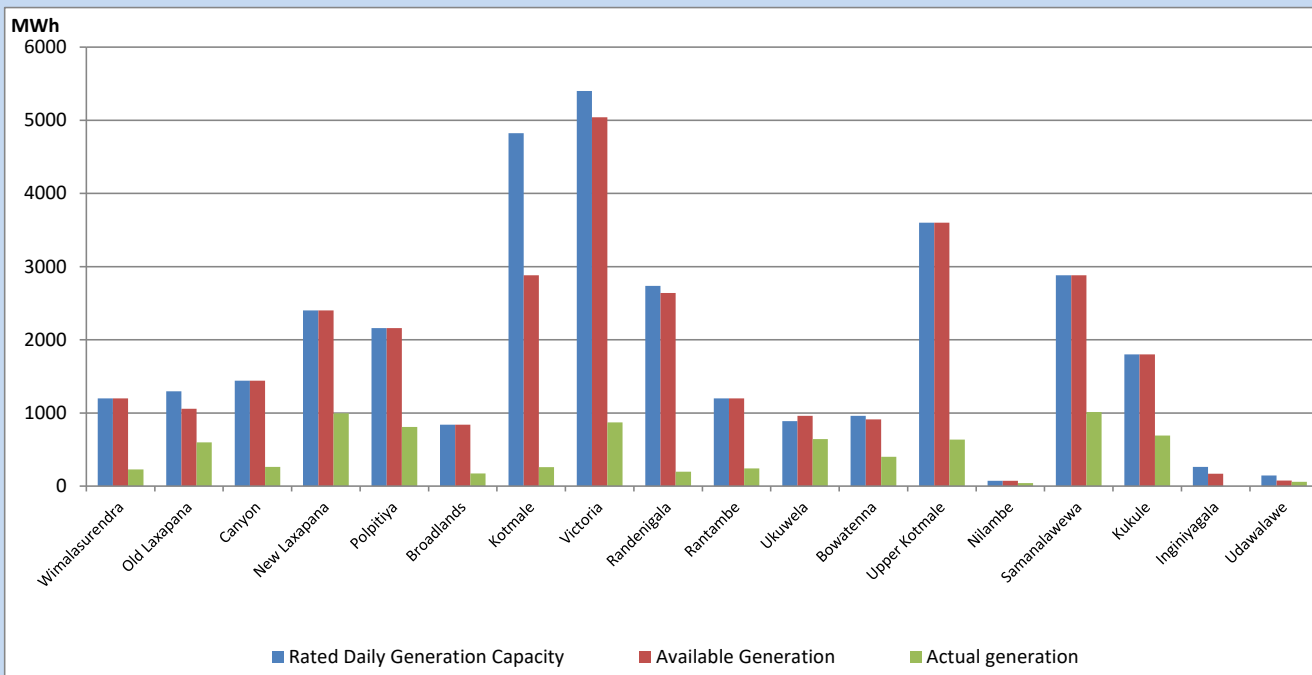


Note- Plant availability is recorded at 6.00 am on

May 8, 2023

## Major Hydro Plant Dispatch

May 7, 2023

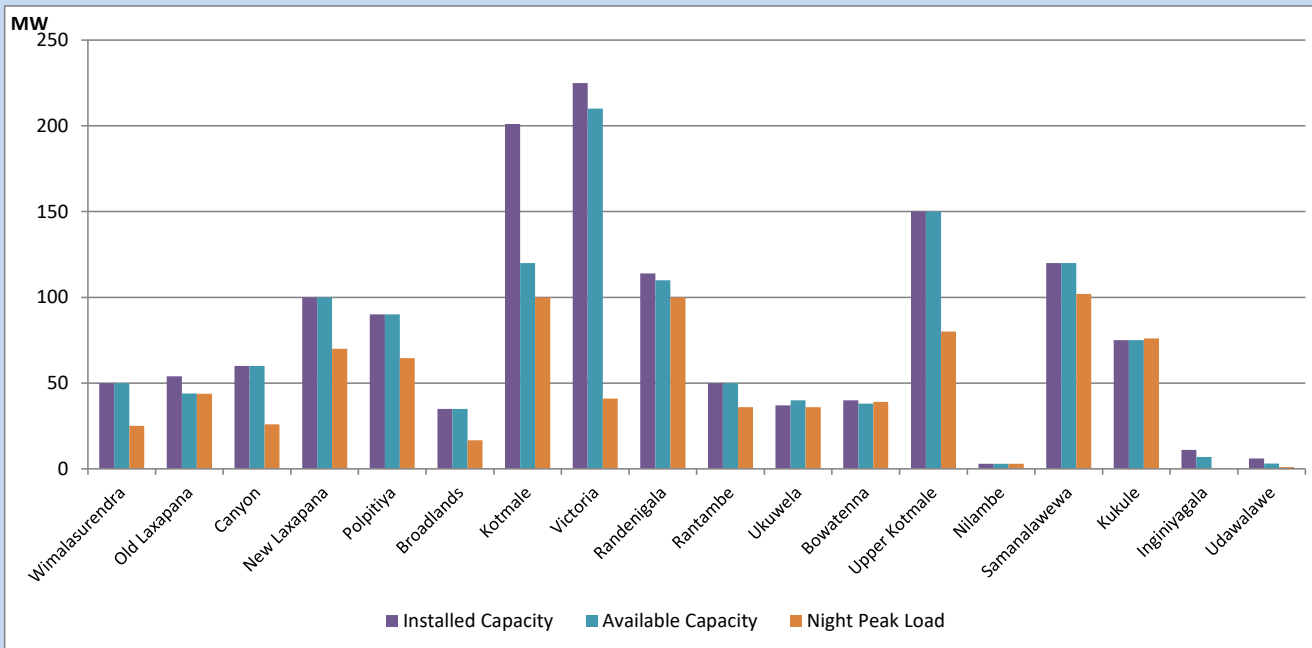


Available Generation is estimated based on plant availability at 6.00am on  
Broadlands power plant is operating in the Commissioning Stage

May 8, 2023

## Major Hydro Plant Loading at Night Peak

May 7, 2023



Note- Plant availability is recorded at 6.00 am on  
Broadlands power plant is operating in the Commissioning Stage

May 8, 2023

## Summary of Major Plant performance

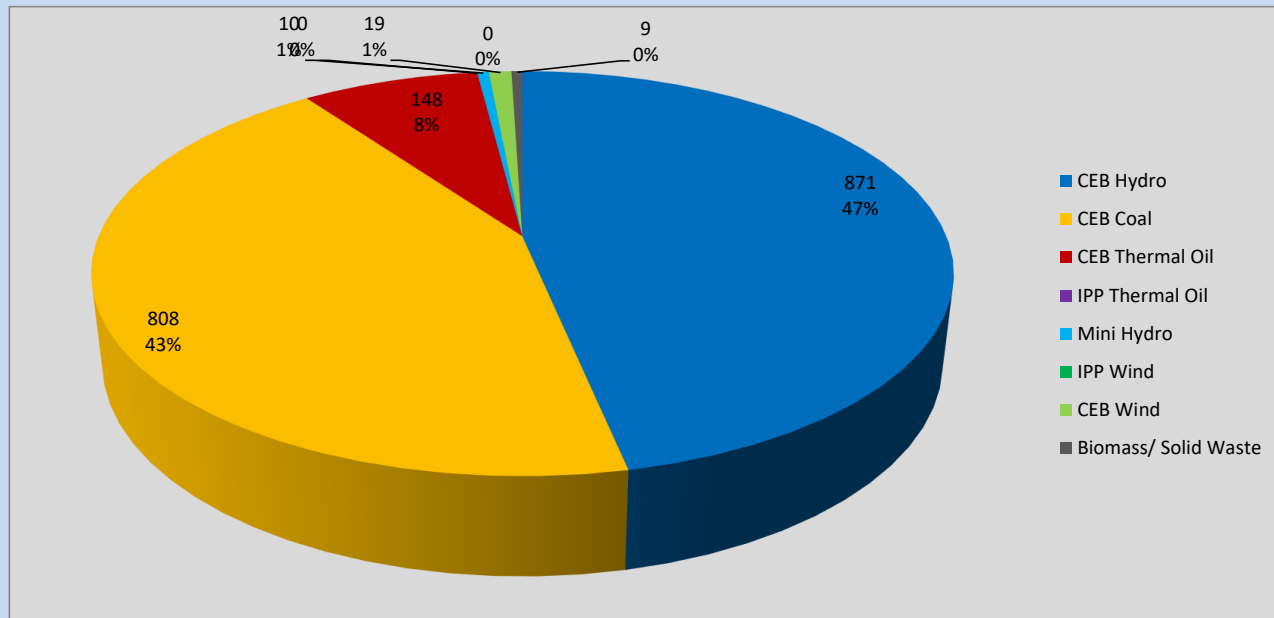
Plant	Installed Capacity	Plant Availability	Night peak Load	Plant Dispatch
	(MW)	(MW)	(MW)	(MWh)
Wimalasurendra	50	50	25	229
Old Laxapana	54	44	44	596
Canyon	60	60	26	261
New Laxapana	100	100	70	995
Polpitiya	90	90	65	809
Broadlands	35	35	17	173
Kotmale	201	120	100	260
Victoria	225	210	41	870
Randenigala	114	110	100	196
Rantambe	50	50	36	242
Ukuwela	37	40	36	643
Bowatenna	40	38	39	400
Upper Kotmale	150	150	80	636
Nilambe	3	3	3	42
Samanalawewa	120	120	102	1,014
Kukule	75	75	76	690
Inginiyagala	11	7	0	0
Udawalawe	6	3	1	60
Puttalam Coal I	270	270	269	6,119
Puttalam Coal II	270	270	268	6,109
Puttalam Coal III	270	270	271	6,157
KPS Small GTs	64	16	0	0
KPS GT 7	115	115	0	0
KCCP	161	158	0	0
Sapugaskanda A	70	32	0	0
Sapugaskanda B	70	45	36	766
Uthura Janani	26	24	23	169
Barge CEB	60	60	60	429
CEB-Hambantota	30	21	20	54
CEB-Mathugama	20	11	9	20
ACE Matara	24	0	0	0
Asia Power	50	0	0	0
Sojitz Kelanitissa	163	152	0	0
West Coast	270	130	0	0
Nothern Power	36	0	0	0
ACE Embilipitiya	93	0	0	0
<b>Total</b>	<b>3,483</b>	<b>2,878</b>	<b>1,854</b>	<b>29,633</b>

Plant availability is the availability recorded at 6 am on

May 8, 2023

## Contribution to the Night Peak in MW

May 7, 2023

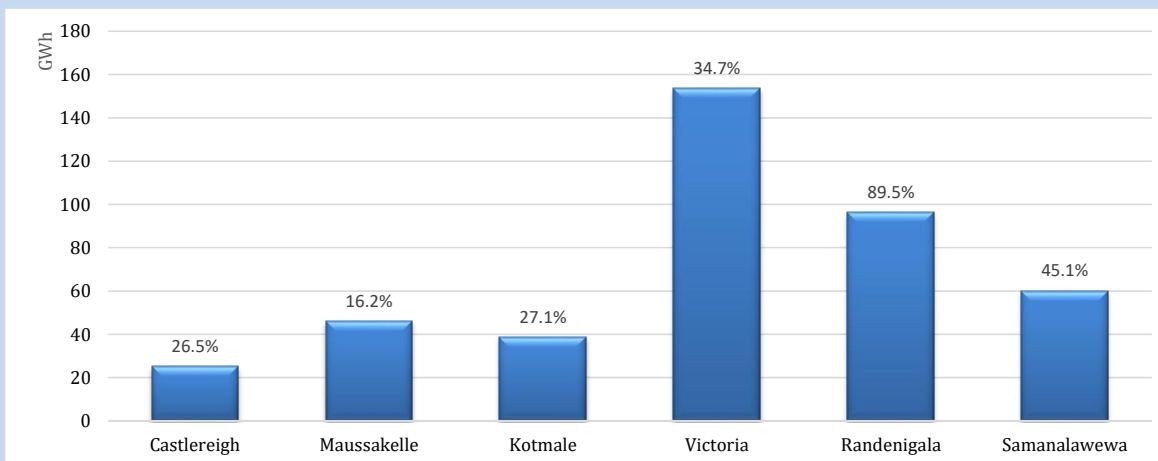


Night Peak*	1,865 MW
Day Peak	1,181 MW
Minimum Demand	1,003 MW

Above figures are excluding contribution from roof top solar, non telemetered solar and mini hydro plants

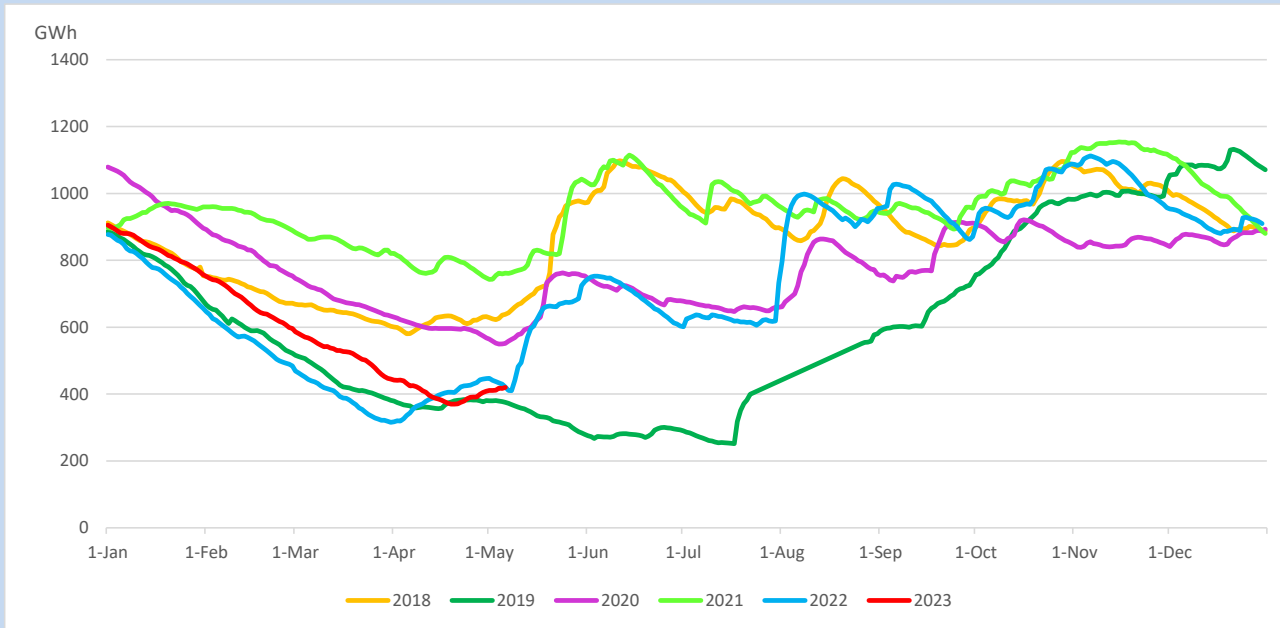
## Reservoir Levels -

as at 06.00 Hr on May 8, 2023

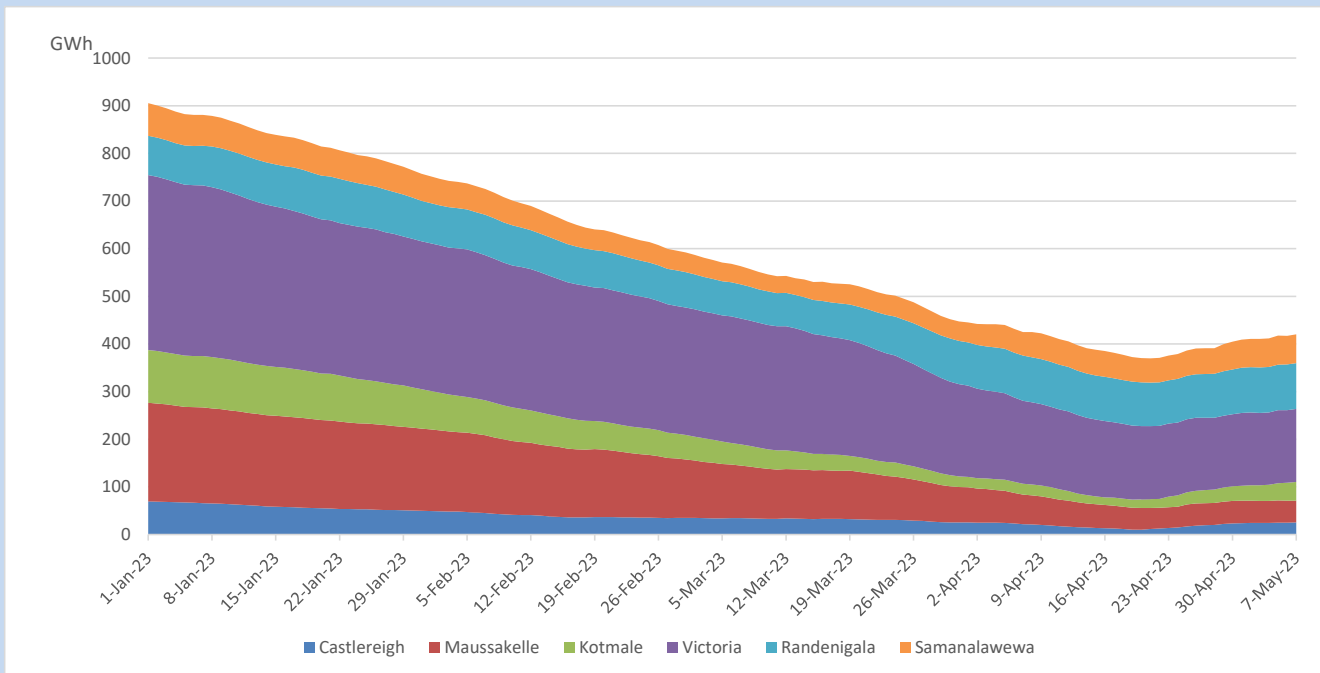


Total Reservoir Level	420 GWh
% of Total capacity	34.8%

## Comparison of Total Reservoir Storage Levels with Past Years

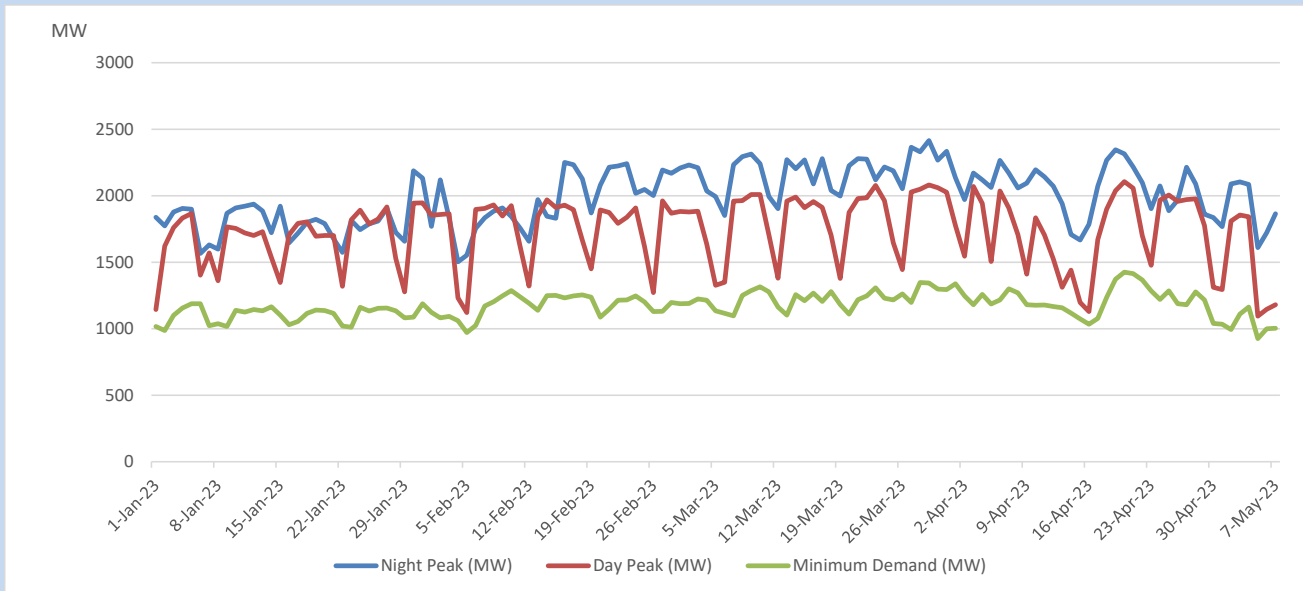


## Variation of Major Hydro Reservoir Levels in the current year (GWh)





## Variation of Demand during the current year

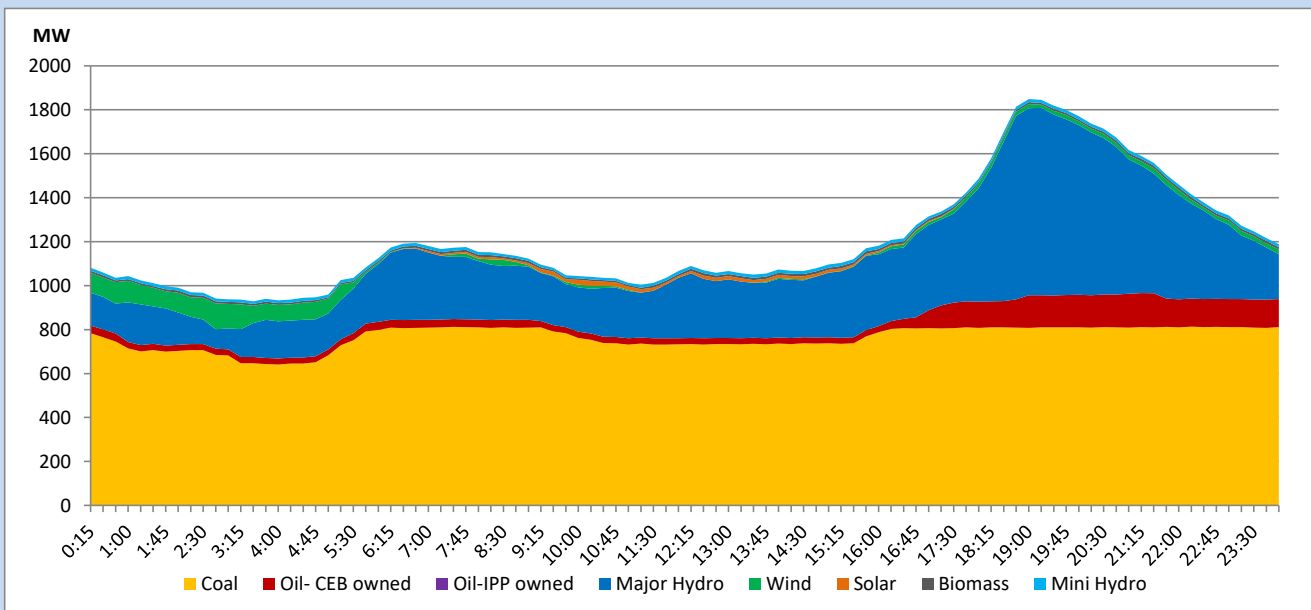


The above figures are excluding contribution from roof top solar, non telemetered solar and mini hydro plants

## Daily Load Curve

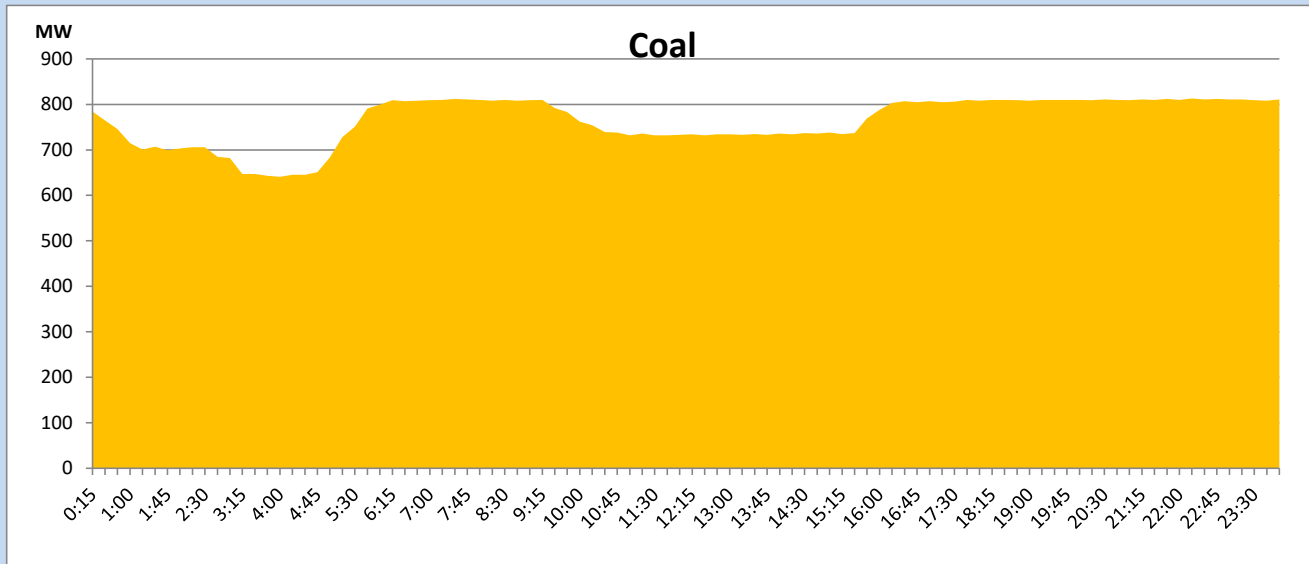
May 7, 2023

Solar and wind data is based on Telemetered Power Stations only



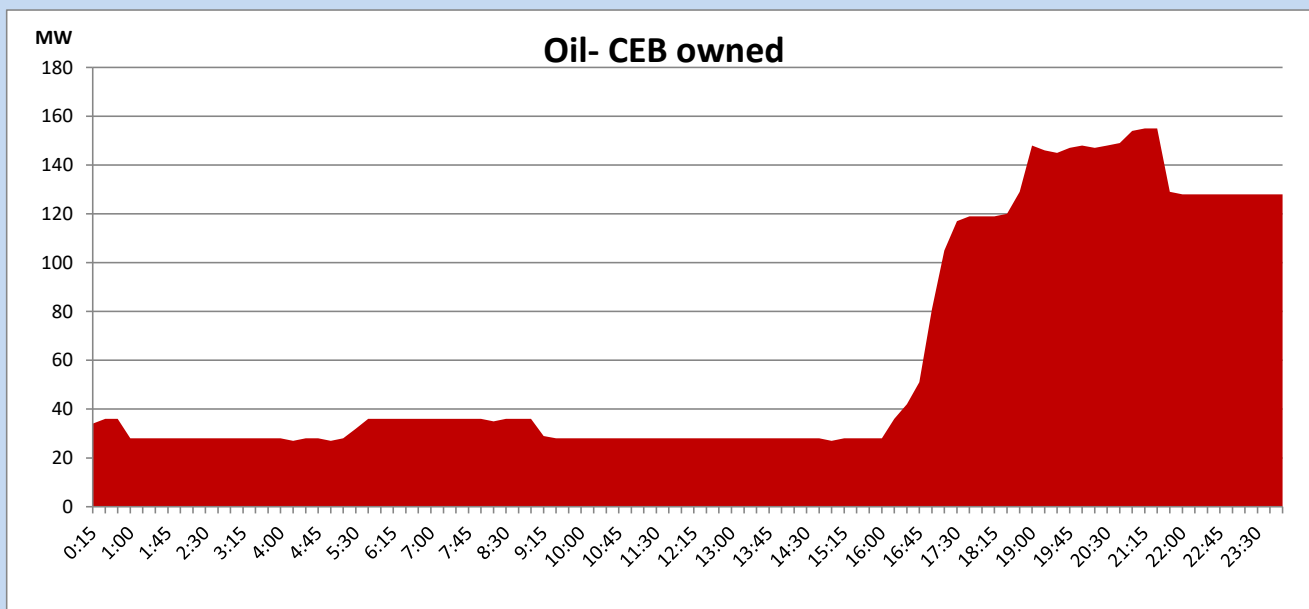
## Coal Generation during

May 7, 2023



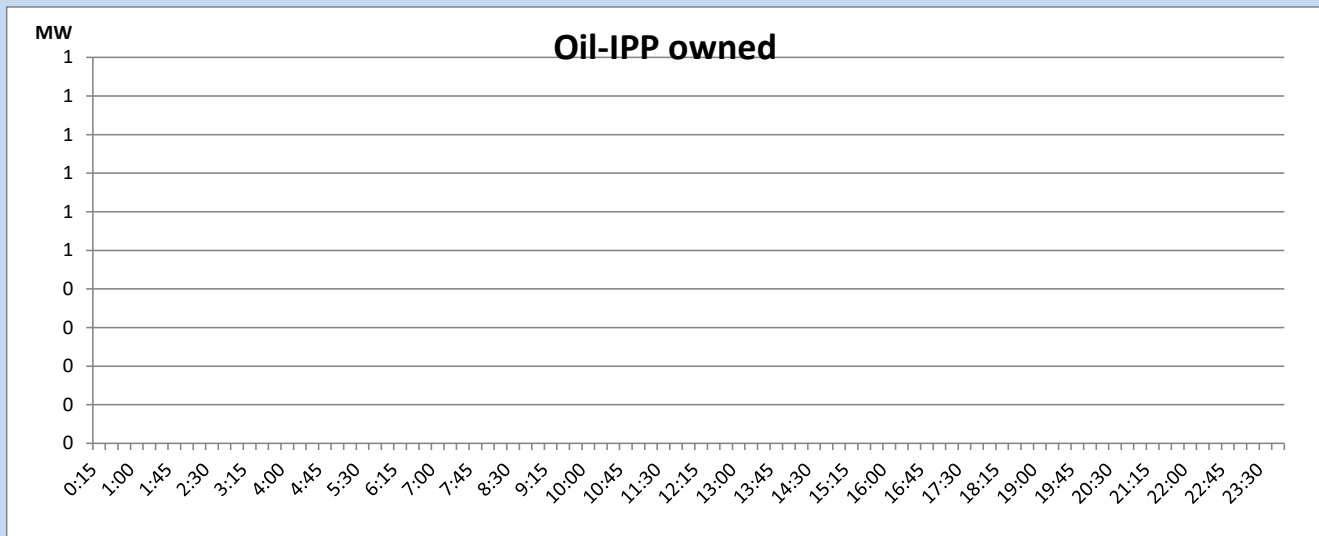
## CEB Oil Plant Generation during

May 7, 2023



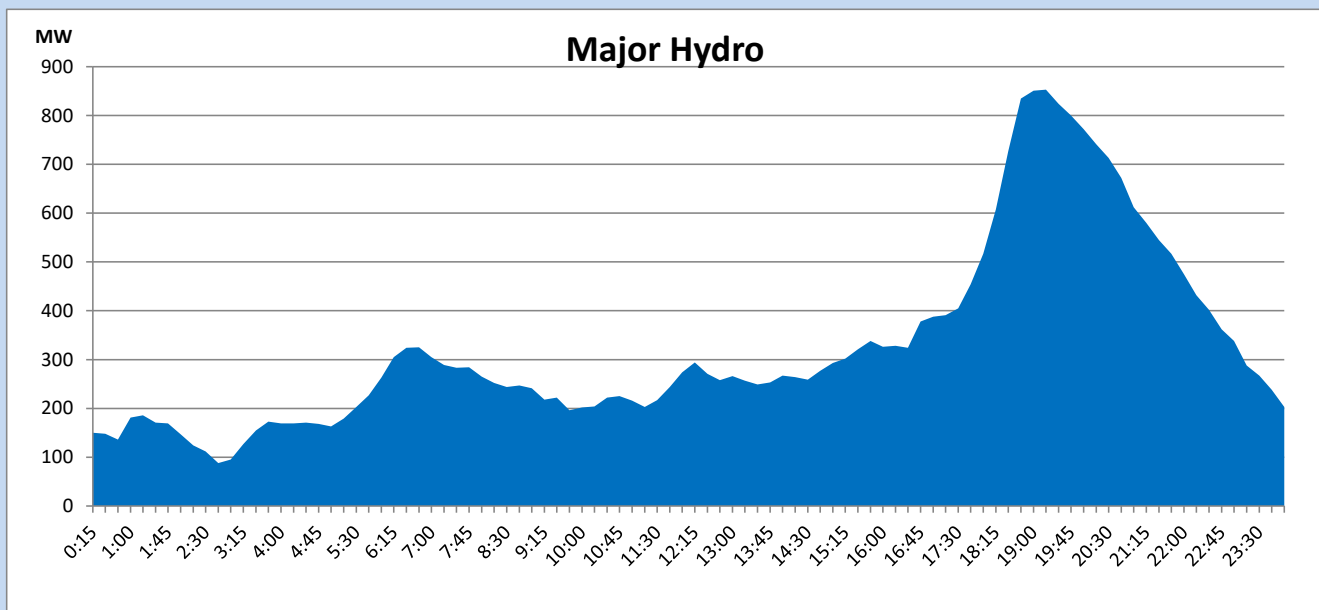
## IPP Oil Plant Generation during

May 7, 2023



## Major Hydro Generation during

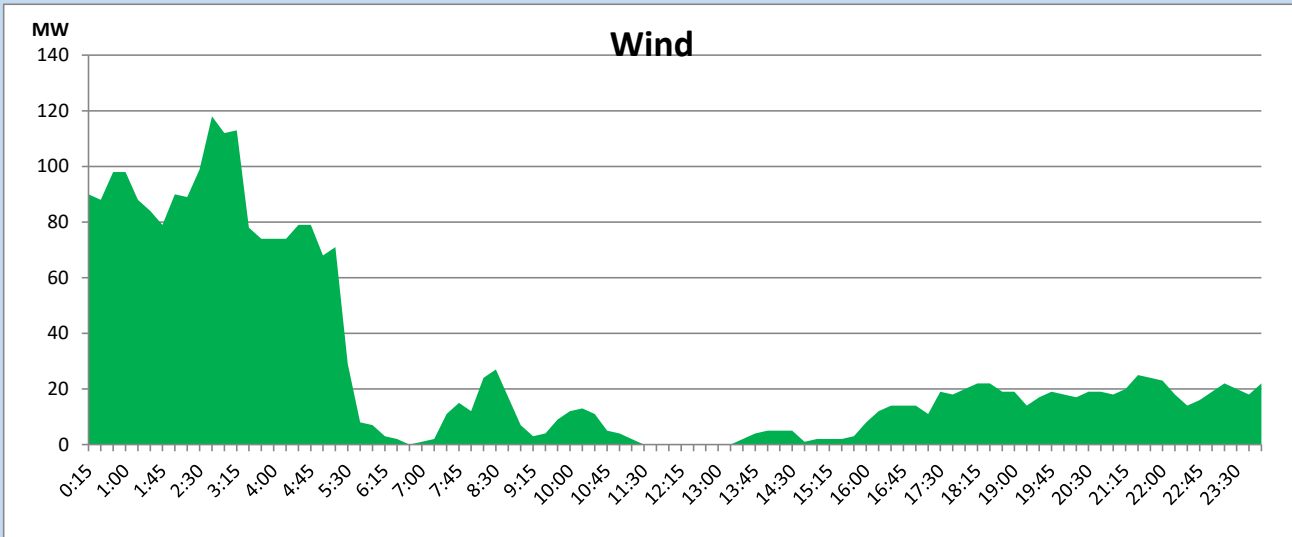
May 7, 2023



## Wind Generation during

May 7, 2023

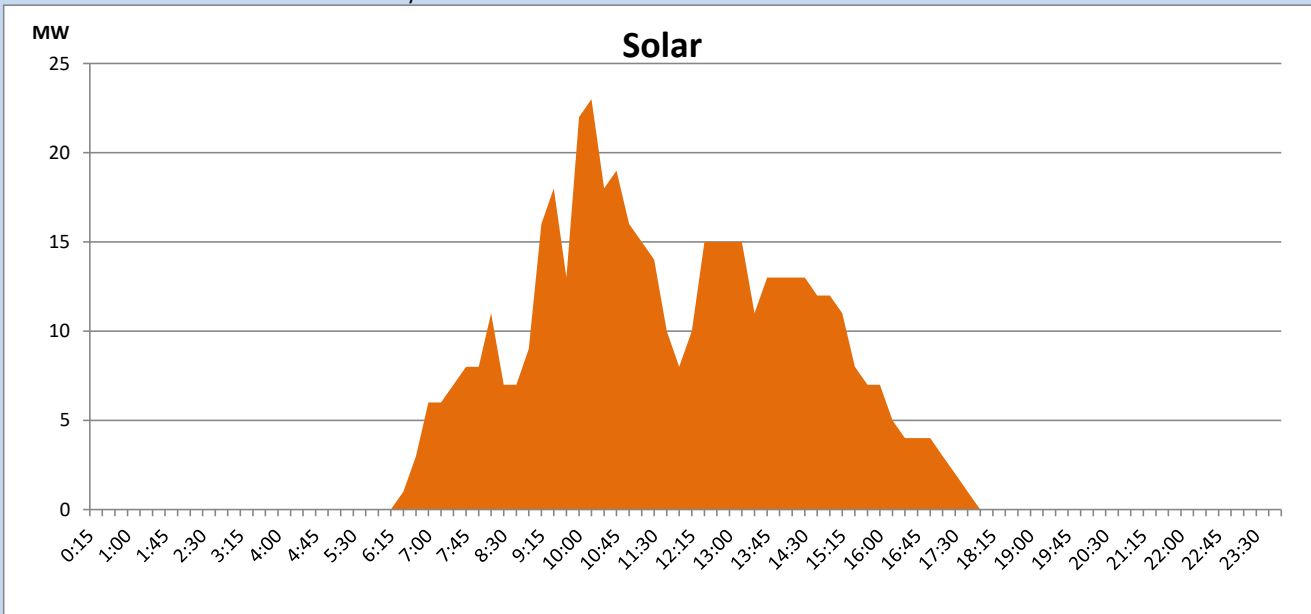
Based on Telemetered Power Stations only



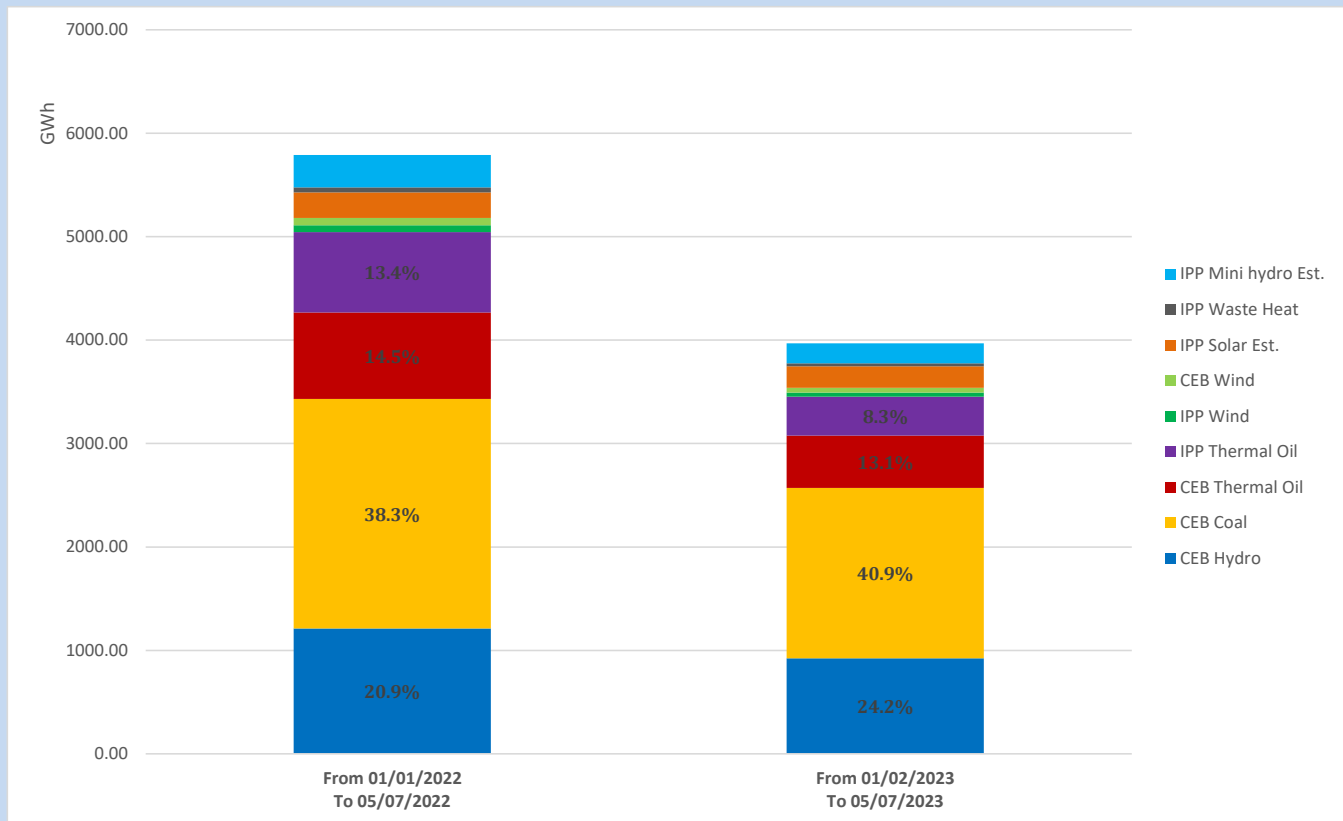
## Solar Generation during

May 7, 2023

Based on Telemetered Power Stations only



## Cumulative Dispatch Comparison with Last Year



The above figures are including contribution from roof top solar, non telemetered solar and mini hydro plants

### Thermal Plant Fuel types

Power Station	Primary Fuel
CEB Thermal	
Sapugaskanda 1	Heavy Fuel
Sapugaskanda 2	Heavy Fuel
Kelanitissa Small Gas Turbines	Auto Diesel
GT 7 - Kelanitissa	Auto Diesel
Kelanitissa CCY	Naphtha or Diesel
Lakvijaya 1	Coal
Lakvijaya 2	Coal
Lakvijaya 3	Coal
Uthuru Janani	Heavy Fuel
Barge CEB	Heavy Fuel

Power Station	Primary Fuel
Private Thermal	
West Coast	Auto Diesel / Heavy Fuel

### Major Incidents reported during the day

May 7, 2023

- 1) Mannar – Nadukuda 220kV cct 01 which was manually turned off on 05.05.23 was normalized at 16:27hrs.
- 2) KCCPS2 made available for commercial operation at 23:00hrs.