

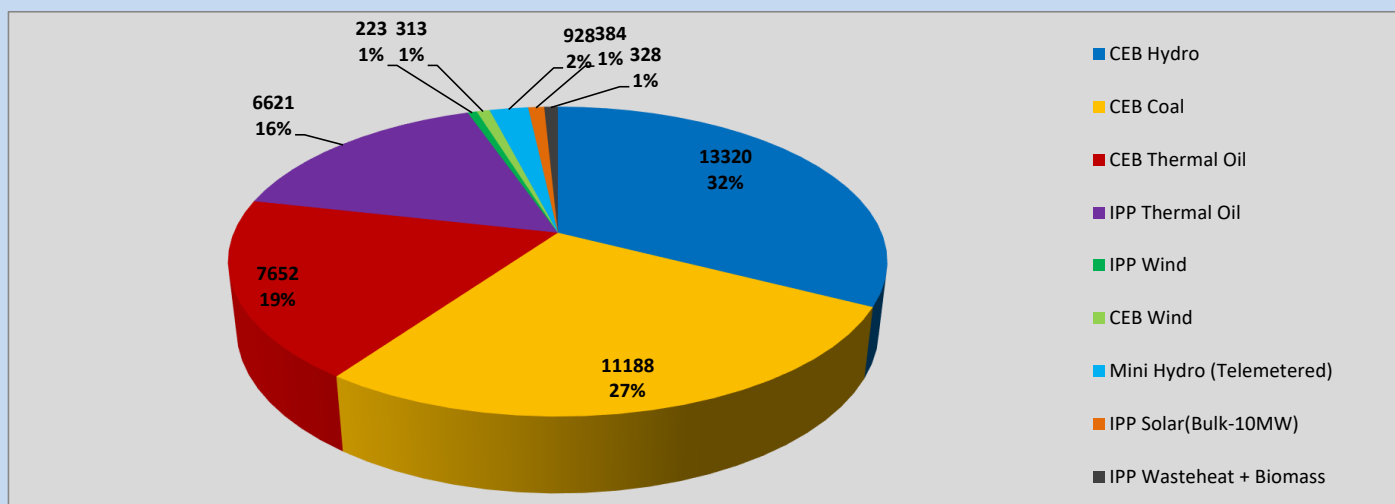
Generation and Reservoirs Statistics

April 7, 2023



PUBLIC UTILITIES COMMISSION OF SRI LANKA

Daily Generation Mix in MWh



Total Generation (Excluding estimated figures) =

40,957 MWh

Estimated figures of CEB generation report

Estimated unserved energy = 0.00 GWh
 Estimated Mini Hydro (Non telemetered) = 1452 MWh
 Estimated IPP Solar PV (Bulk 1-10MW) = 304 MWh
 Estimated Solar Roof Top PV = 1640 MWh

Cumulative Dispatch

Following data excludes the contribution from roof top solar, non telemetered solar and mini hydro plants

For Current Month

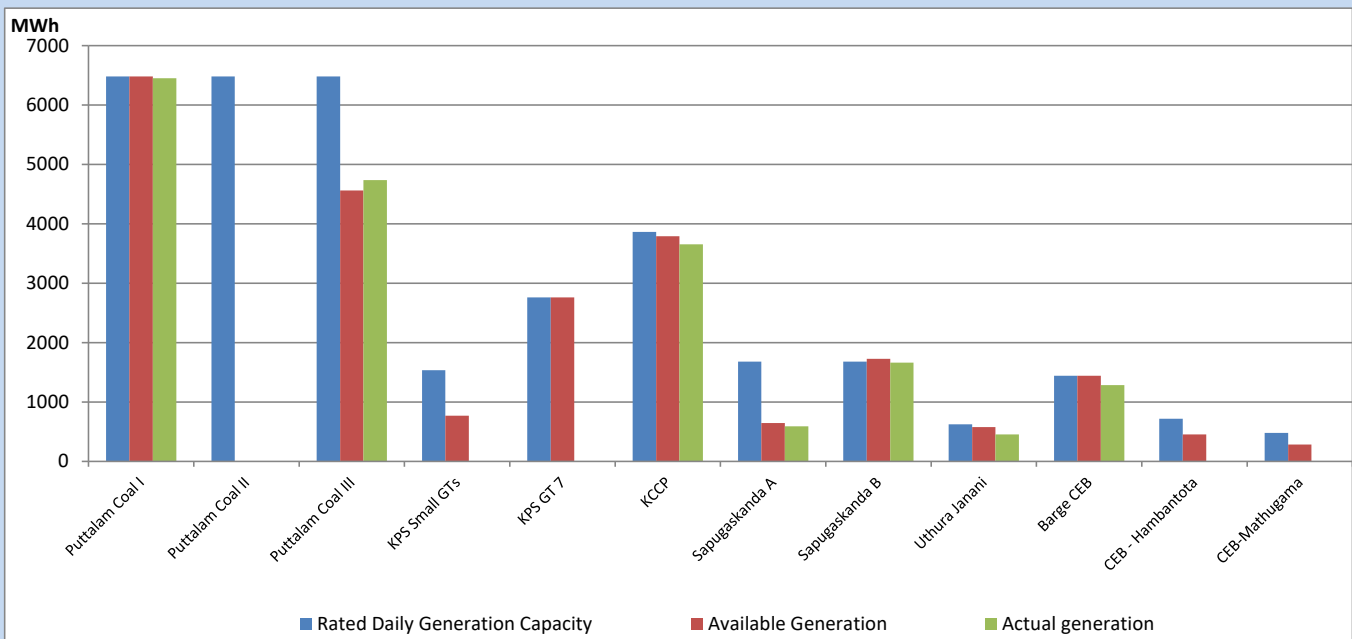
Category	Dispatch (GWh)	Percentage
CEB Hydro	90	32.48%
CEB Coal	91	32.94%
CEB Thermal Oil	39	14.00%
IPP Thermal	41	14.91%
SPP Wind	2	0.60%
CEB Wind	2	0.78%
Mini Hydro (Telemetered)	7	2.54%
IPP Solar (Bulk-10MW)	3	0.92%
IPP Wasteheat + BMP	2	0.82%
Total	276	

For Current Year

Category	Dispatch (GWh)	Percentage
CEB Hydro	1,011	27.38%
CEB Coal	1,613	43.70%
CEB Thermal Oil	509	13.78%
IPP Thermal	311	8.43%
SPP Wind	53	1.42%
CEB Wind	62	1.69%
Mini Hydro (Telemetered)	76	2.06%
IPP Solar (Bulk-10MW)	28	0.76%
IPP Wasteheat	29	0.77%
Total	3,692	

CEB owned Thermal Plant Dispatch

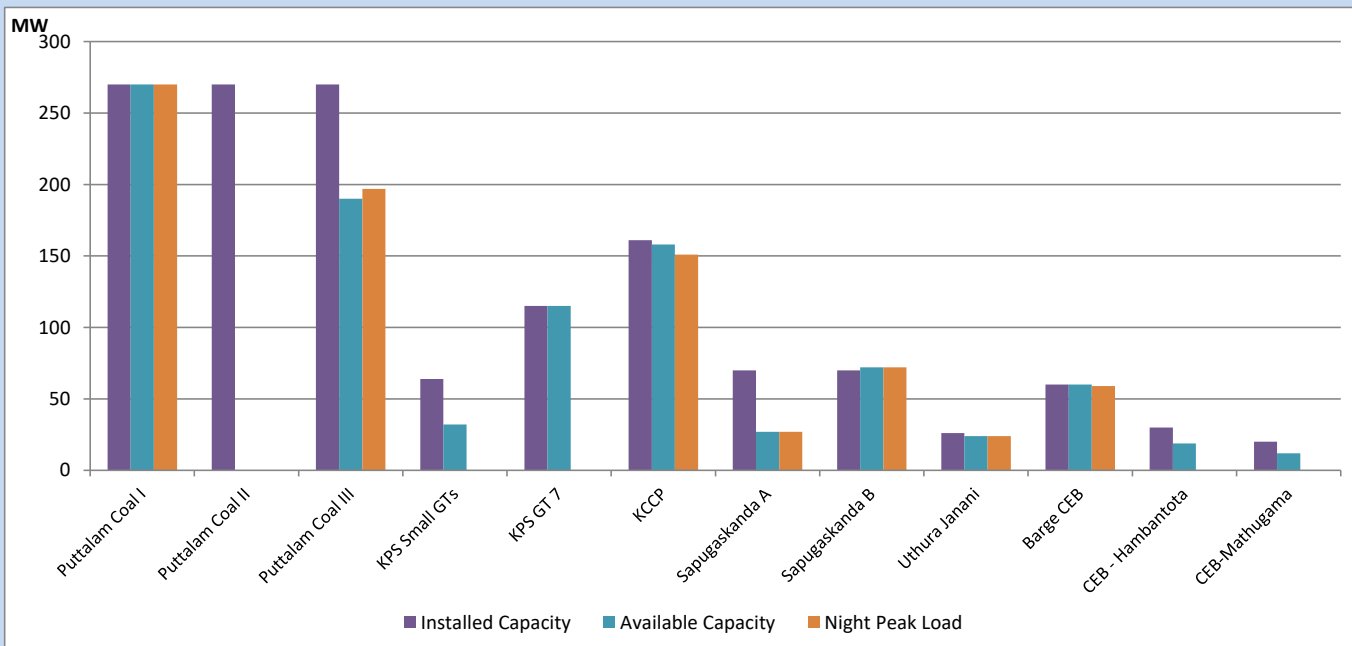
April 7, 2023



Available Generation is estimated based on plant availability at 6.00am on

April 8, 2023

CEB owned Thermal Plant Loading at the Night Peak

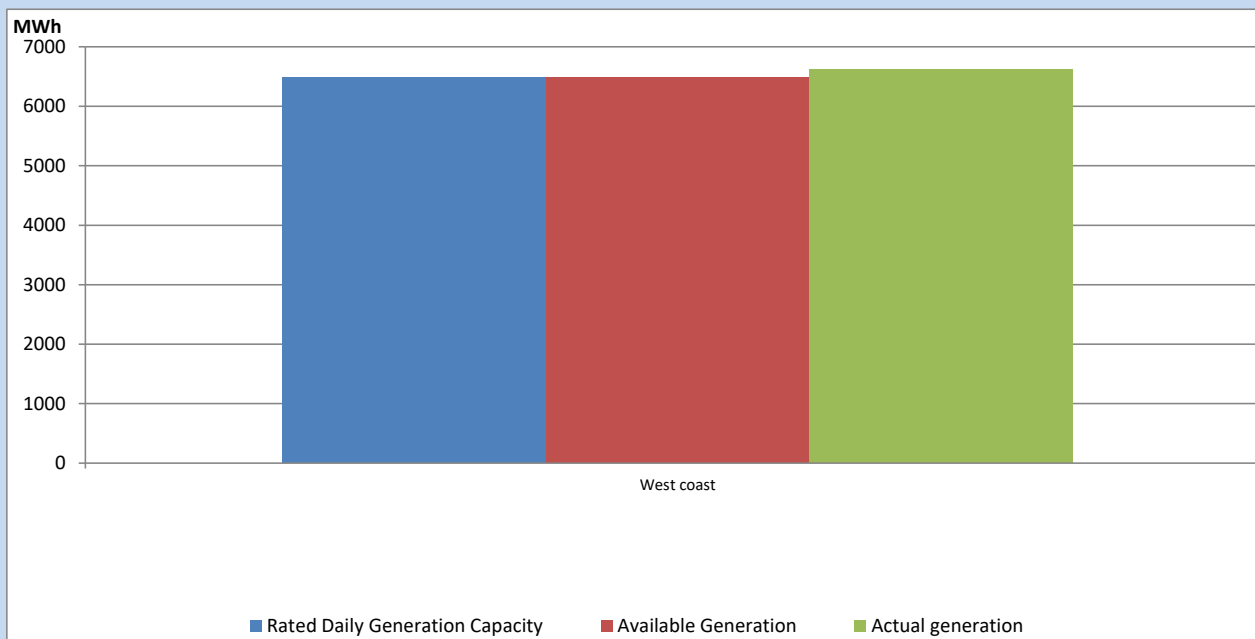


Note- Plant availability is recorded at 6.00 am on

April 8, 2023

IPP owned Thermal Plant Dispatch

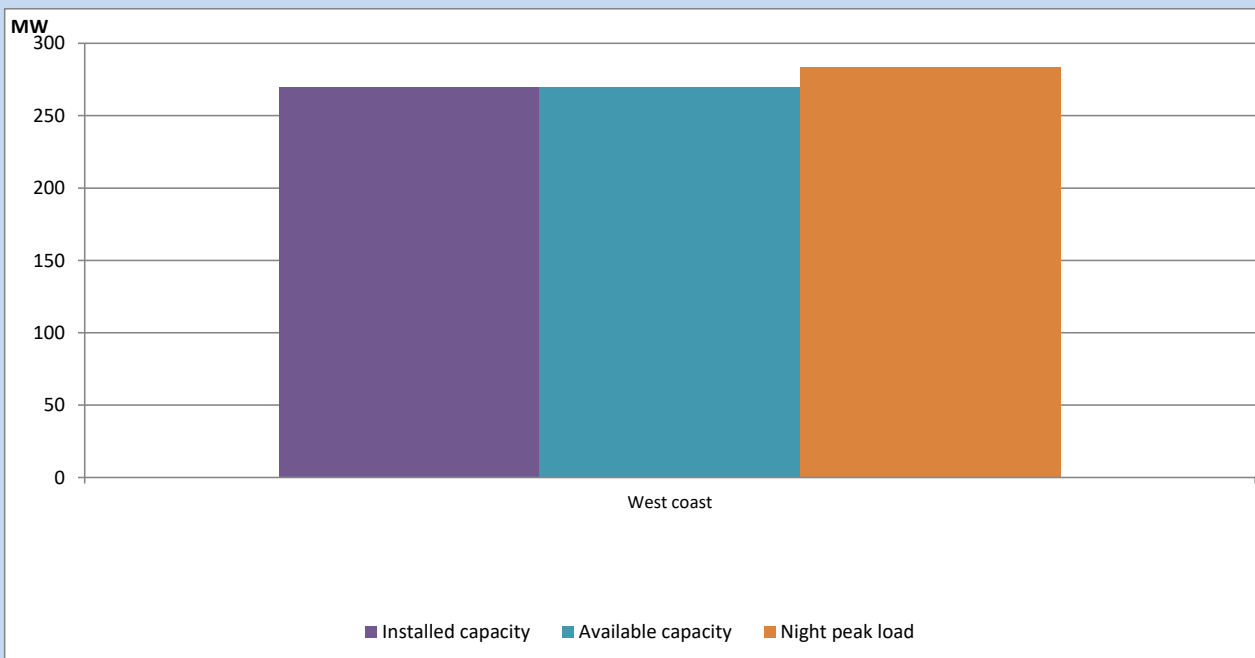
April 7, 2023



Available Generation is estimated based on plant availability at 6.00am on

April 8, 2023

IPP owned Thermal Plant Loading at the Night Peak

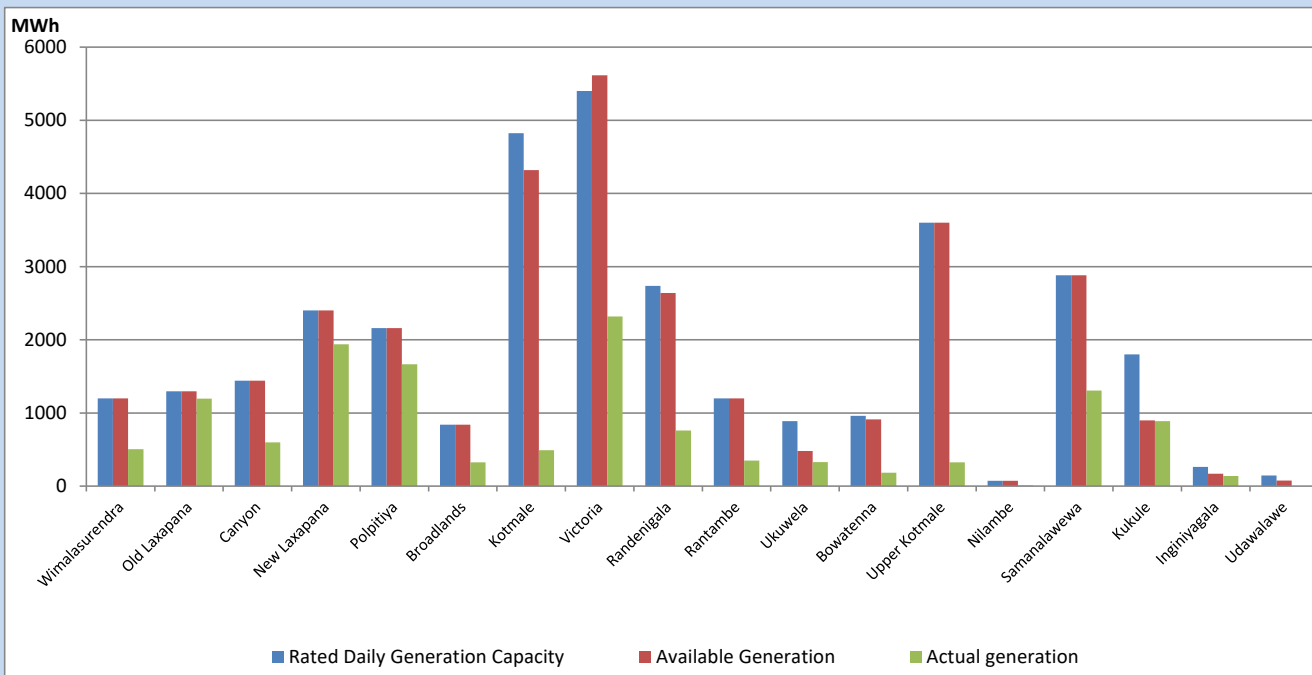


Note- Plant availability is recorded at 6.00 am on

April 8, 2023

Major Hydro Plant Dispatch

April 7, 2023

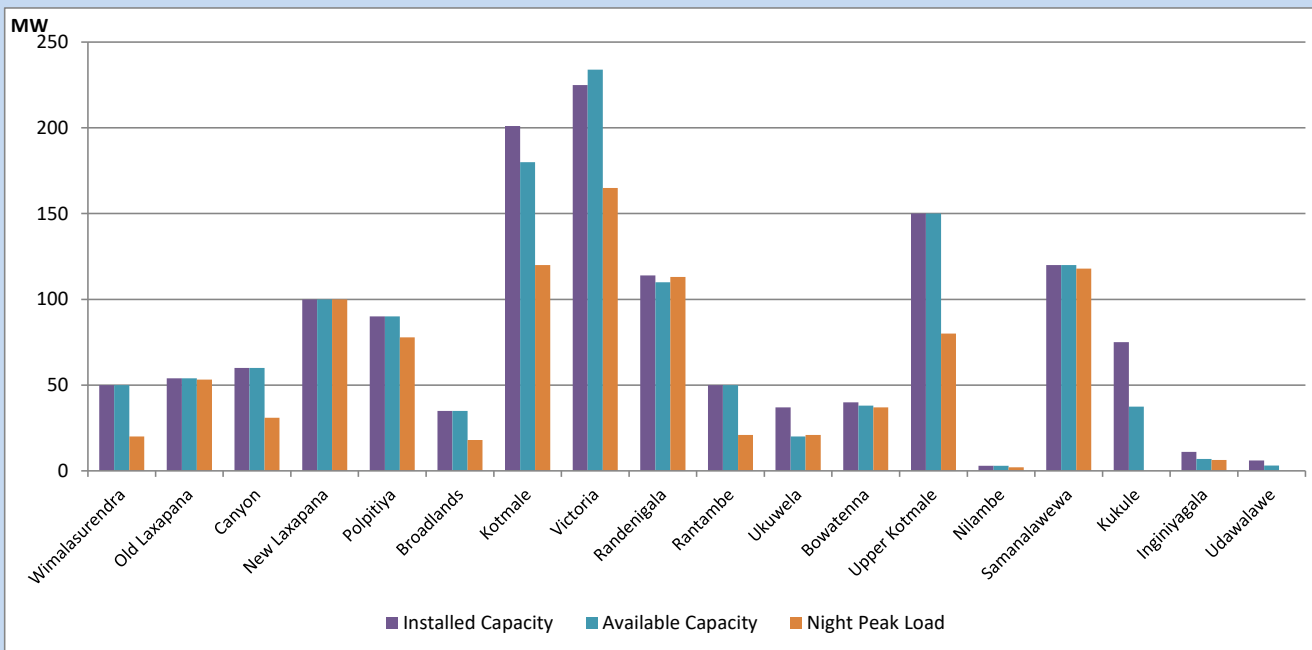


Available Generation is estimated based on plant availability at 6.00am on
Broadlands power plant is operating in the Commissioning Stage

April 8, 2023

Major Hydro Plant Loading at Night Peak

April 7, 2023



Note- Plant availability is recorded at 6.00 am on
Broadlands power plant is operating in the Commissioning Stage

April 8, 2023

Summary of Major Plant performance

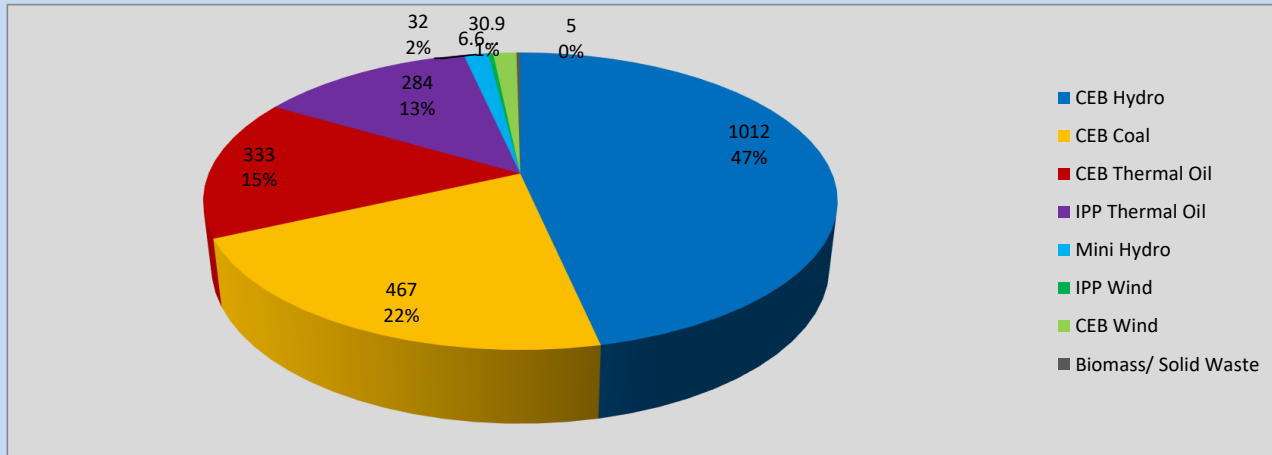
Plant	Installed Capacity	Plant Availability	Night peak Load	Plant Dispatch
	(MW)	(MW)	(MW)	(MWh)
Wimalasurendra	50	50	20	503
Old Laxapana	54	54	53	1,194
Canyon	60	60	31	597
New Laxapana	100	100	100	1,938
Polpitiya	90	90	78	1,664
Broadlands	35	35	18	325
Kotmale	201	180	120	490
Victoria	225	234	165	2,320
Randenigala	114	110	113	761
Rantambe	50	50	21	348
Ukuwela	37	20	21	327
Bowatenna	40	38	37	182
Upper Kotmale	150	150	80	325
Nilambe	3	3	2	11
Samanalawewa	120	120	118	1,307
Kukule	75	38	0	889
Inginiyagala	11	7	6	139
Udawalawe	6	3	0	0
Puttalam Coal I	270	270	270	6,450
Puttalam Coal II	270	0	0	0
Puttalam Coal III	270	190	197	4,738
KPS Small GTs	64	32	0	0
KPS GT 7	115	115	0	0
KCCP	161	158	151	3,657
Sapugaskanda A	70	27	27	591
Sapugaskanda B	70	72	72	1,663
Uthura Janani	26	24	24	456
Barge CEB	60	60	59	1,285
CEB-Hambantota	30	19	0	0
CEB-Mathugama	20	12	0	0
ACE Matara	24	0	0	0
Asia Power	50	0	0	0
Sojitz Kelanitissa	163	0	0	0
West Coast	270	270	284	6,621
Nothern Power	36	0	0	0
ACE Embilipitiya	93	0	0	0
Total	3,483	2,590	2,142	40,957

Plant availability is the availability recorded at 6 am on

April 8, 2023

Contribution to the Night Peak in MW

April 7, 2023

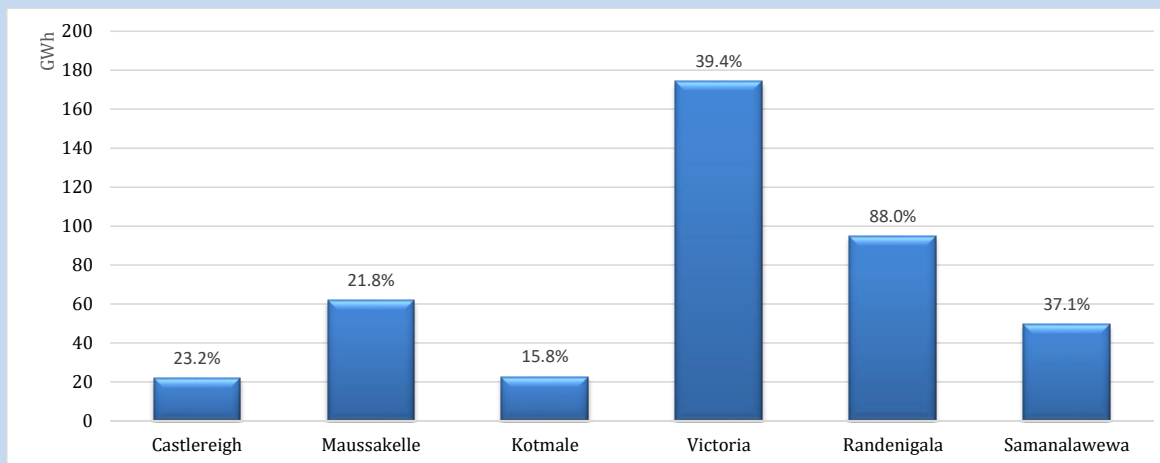


Night Peak*	2,170 MW
Day Peak	1,908 MW
Minimum Demand	1,301 MW

Above figures are excluding contribution from roof top solar, non telemetered solar and mini hydro plants

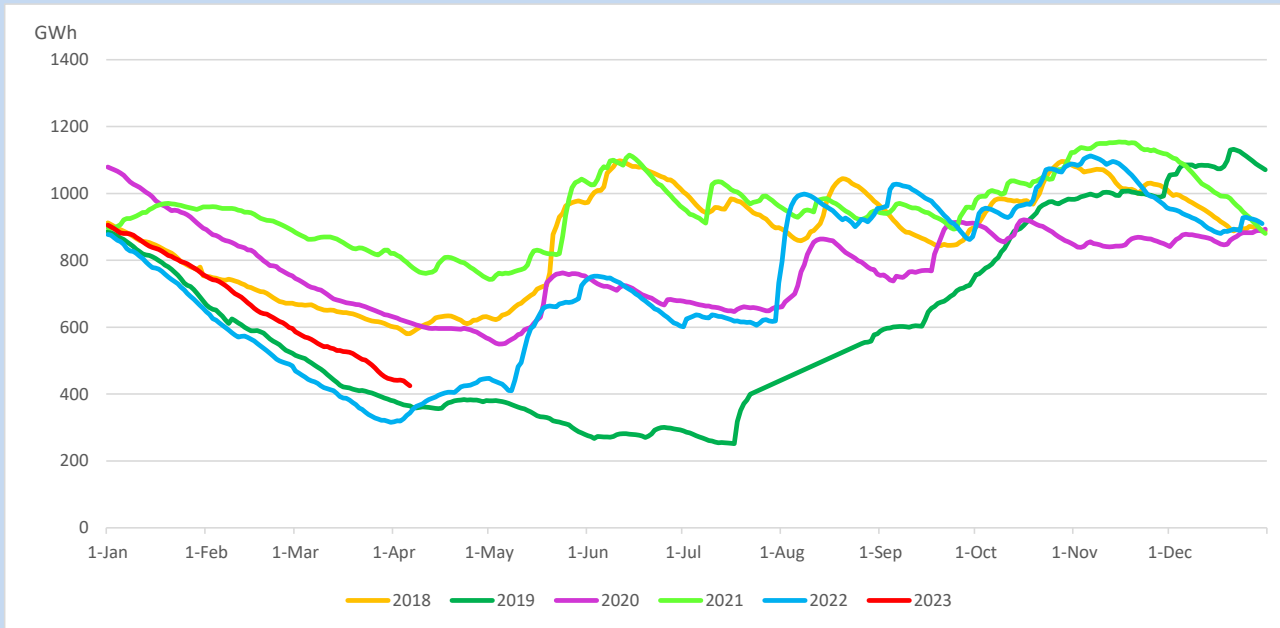
Reservoir Levels -

as at 06.00 Hr on April 8, 2023

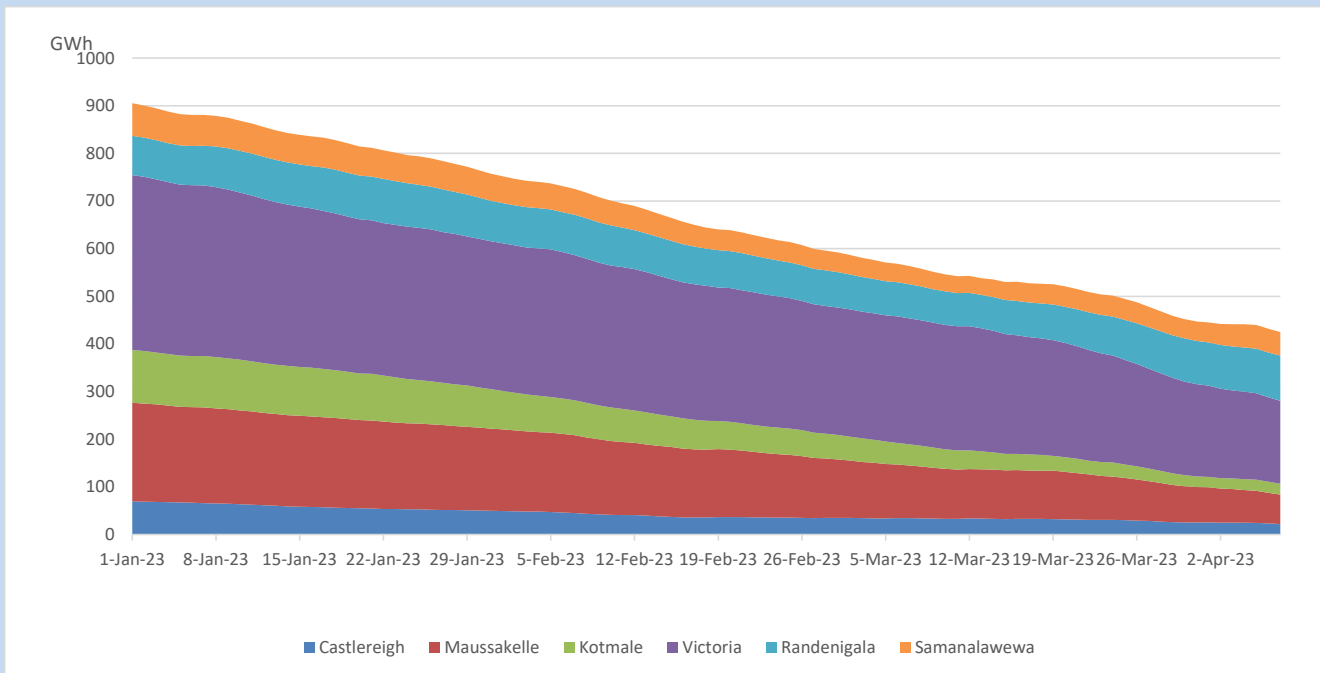


Total Reservoir Level	424.8 GWh
% of Total capacity	35.2%

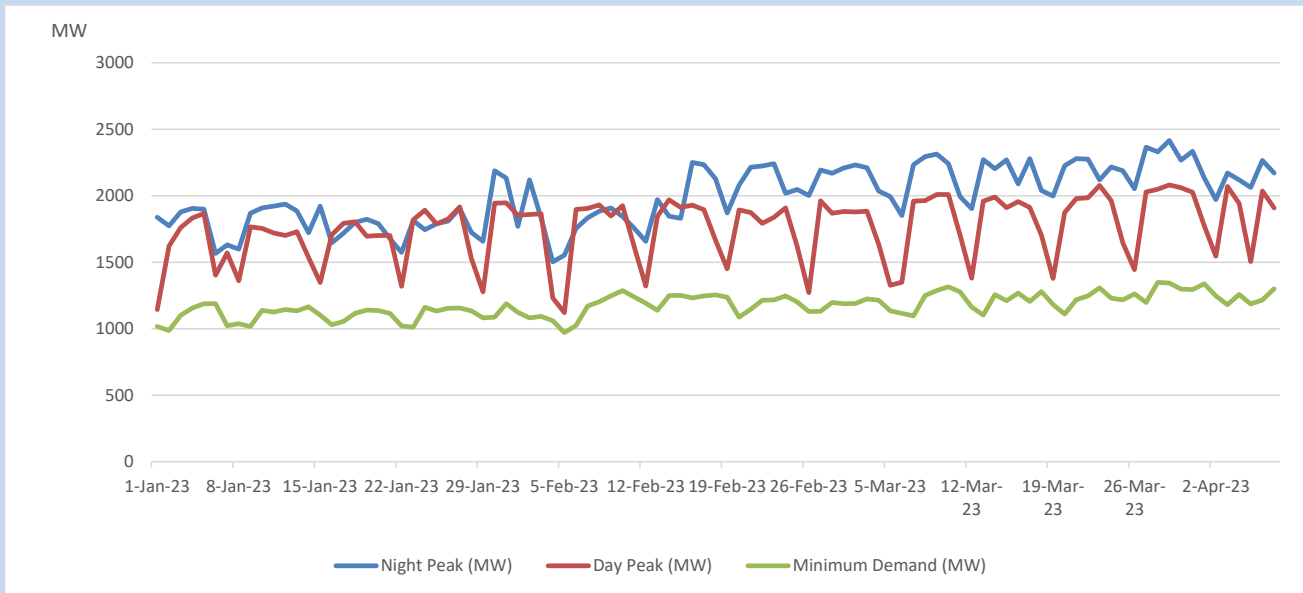
Comparison of Total Reservoir Storage Levels with Past Years



Variation of Major Hydro Reservoir Levels in the current year (GWh)



Variation of Demand during the current year

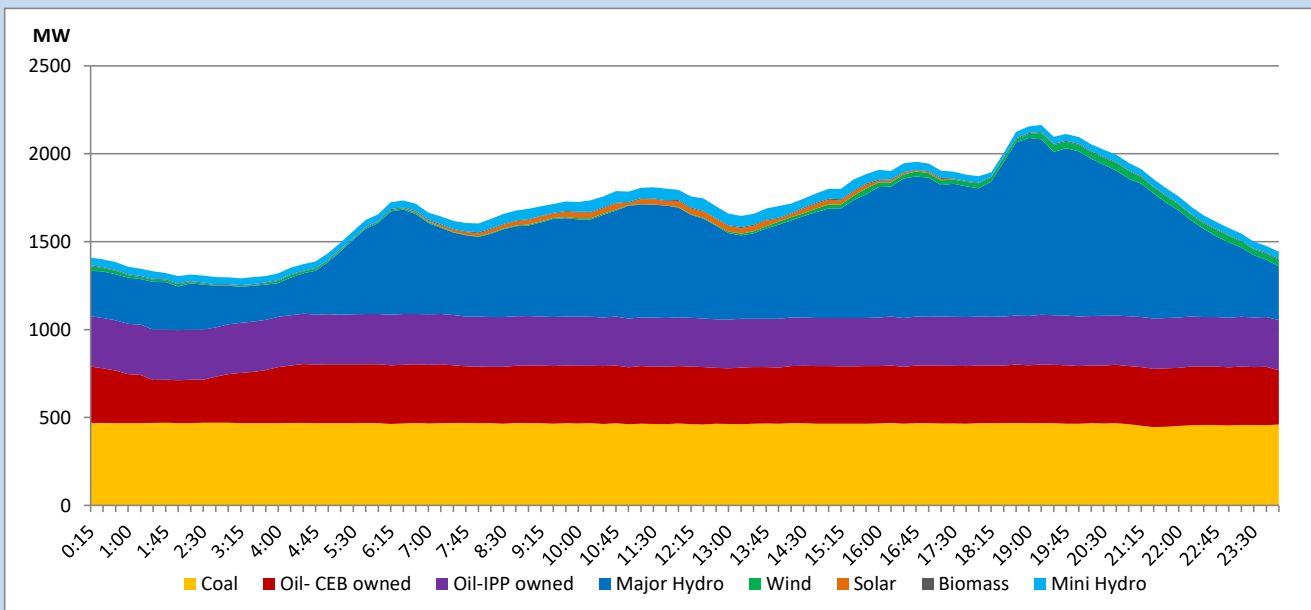


The above figures are excluding contribution from roof top solar, non telemetered solar and mini hydro plants

Daily Load Curve

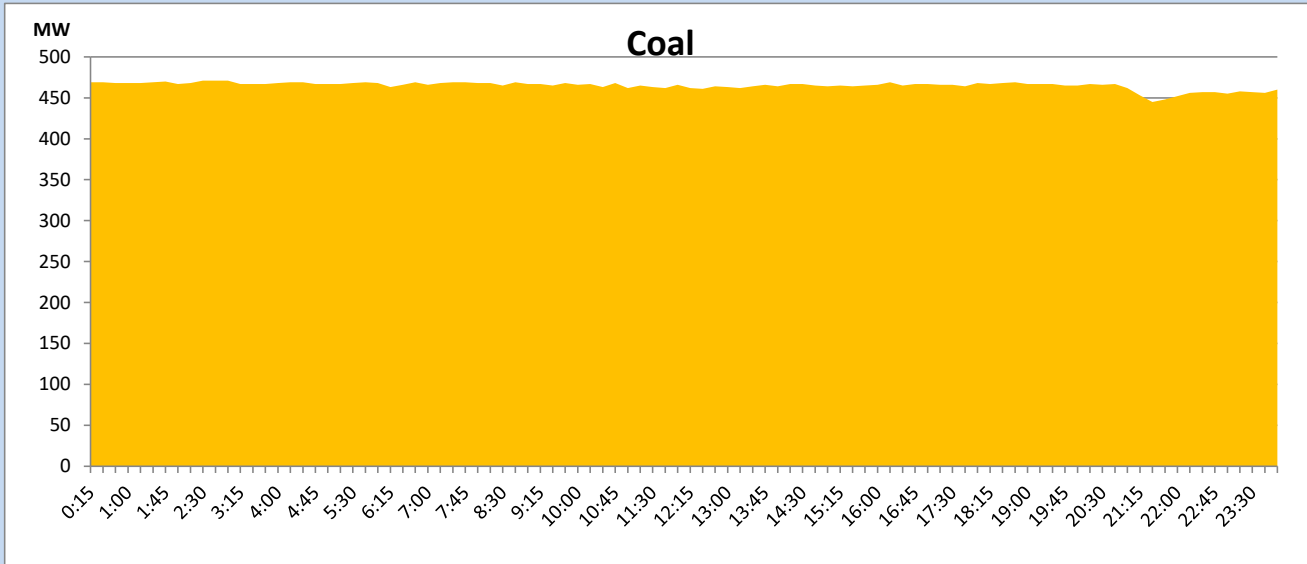
April 7, 2023

Solar and wind data is based on Telemetered Power Stations only



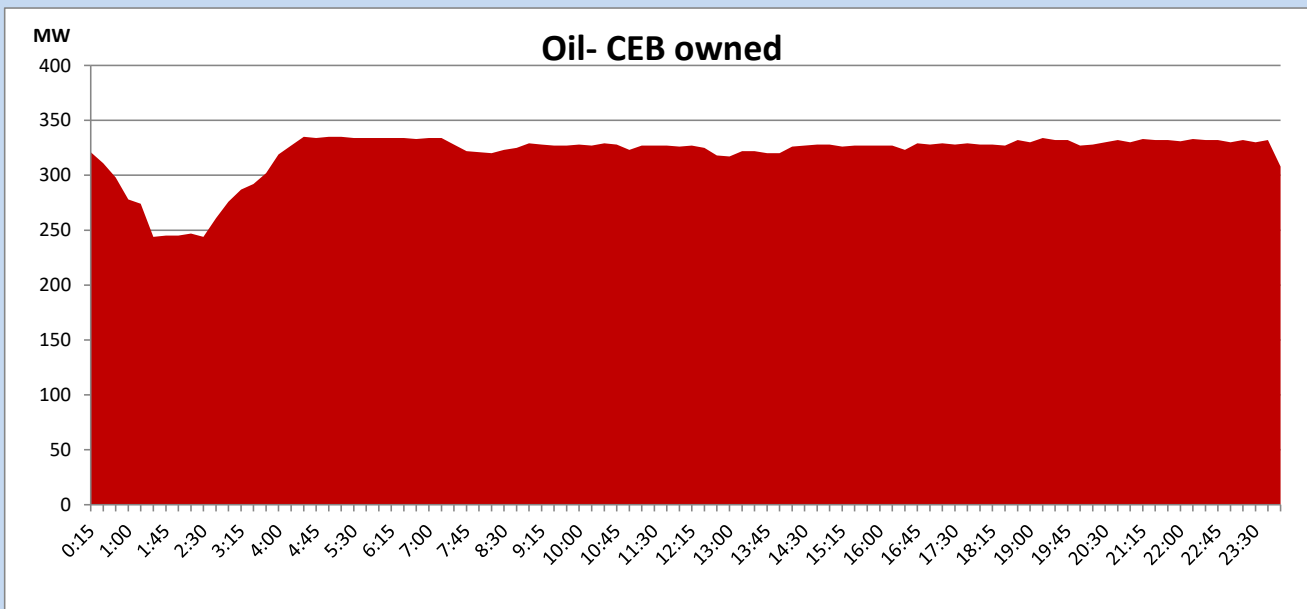
Coal Generation during

April 7, 2023



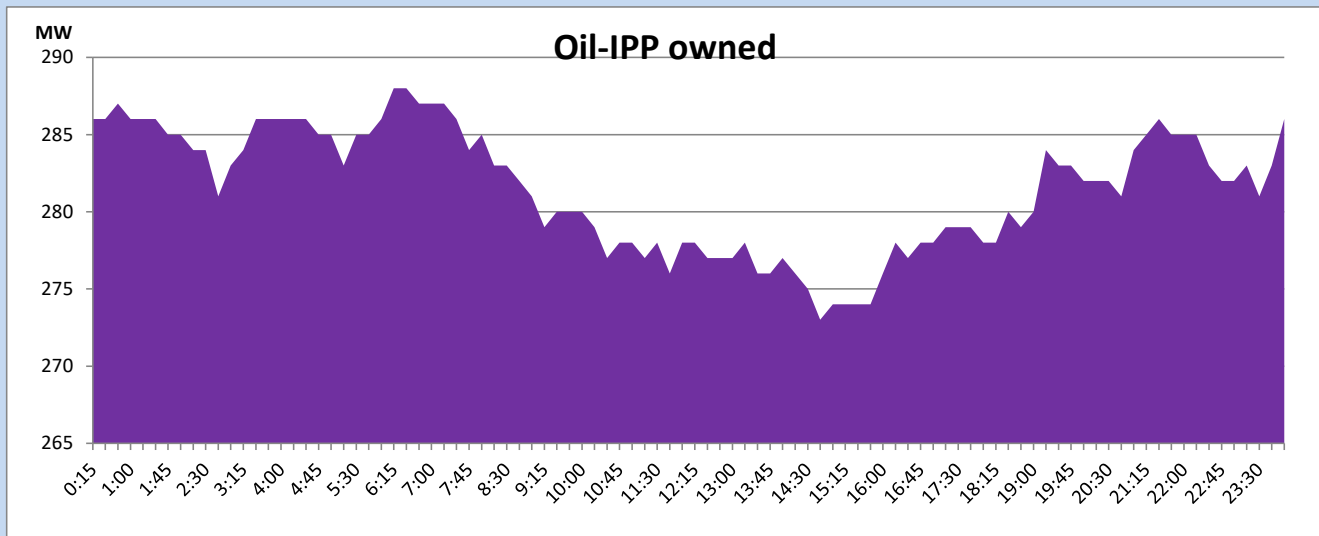
CEB Oil Plant Generation during

April 7, 2023



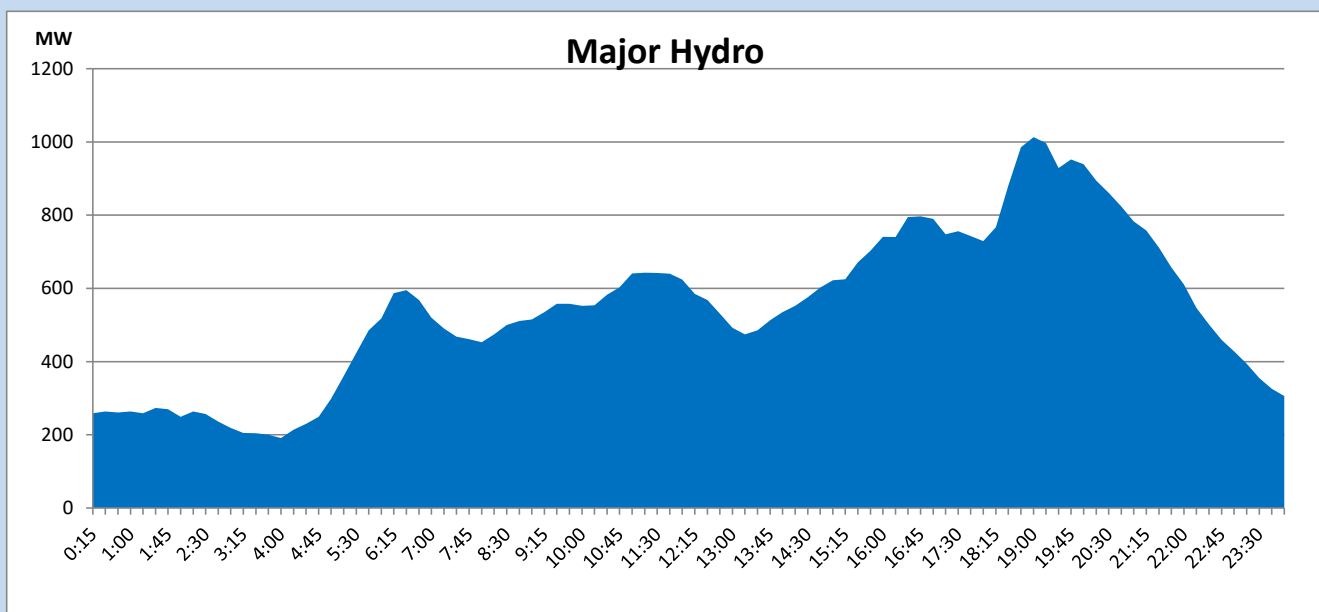
IPP Oil Plant Generation during

April 7, 2023



Major Hydro Generation during

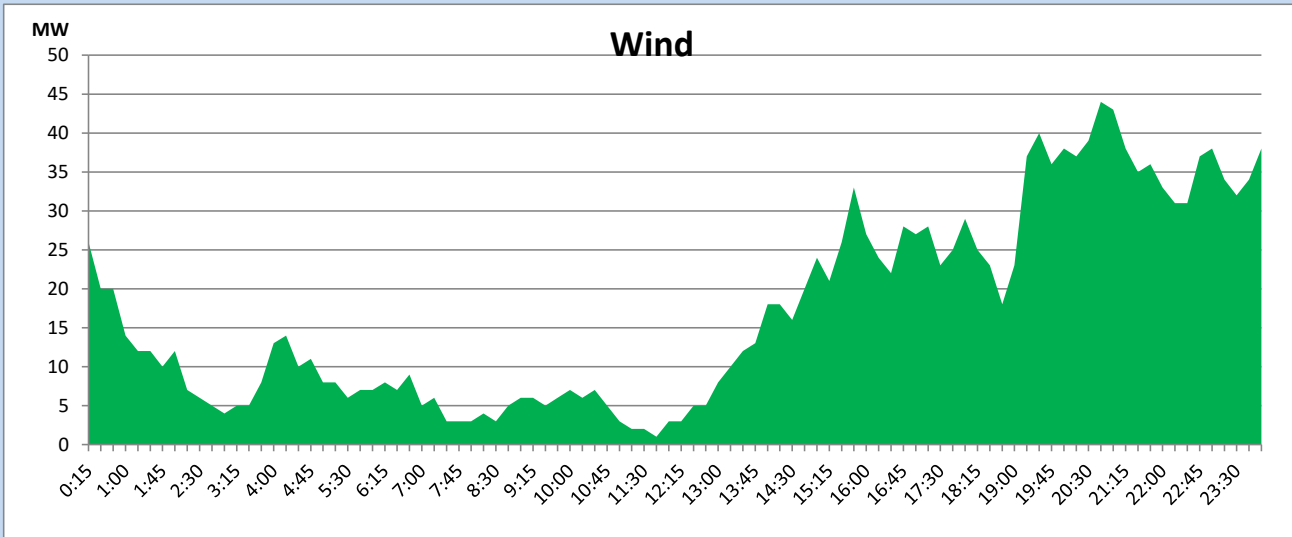
April 7, 2023



Wind Generation during

April 7, 2023

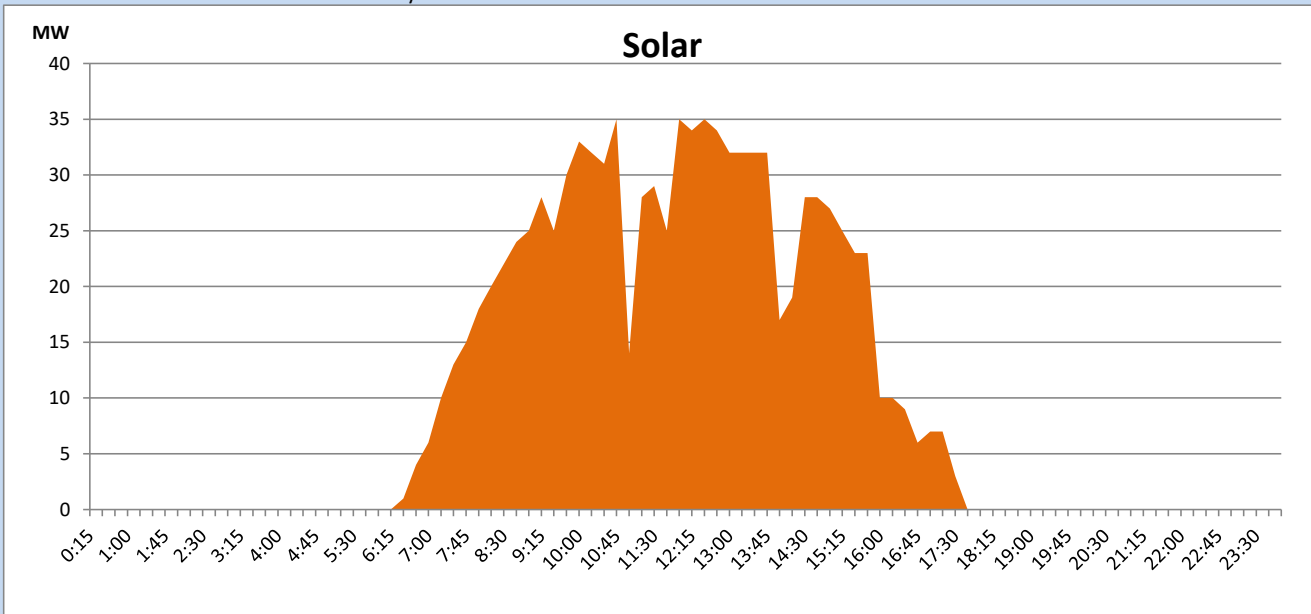
Based on Telemetered Power Stations only



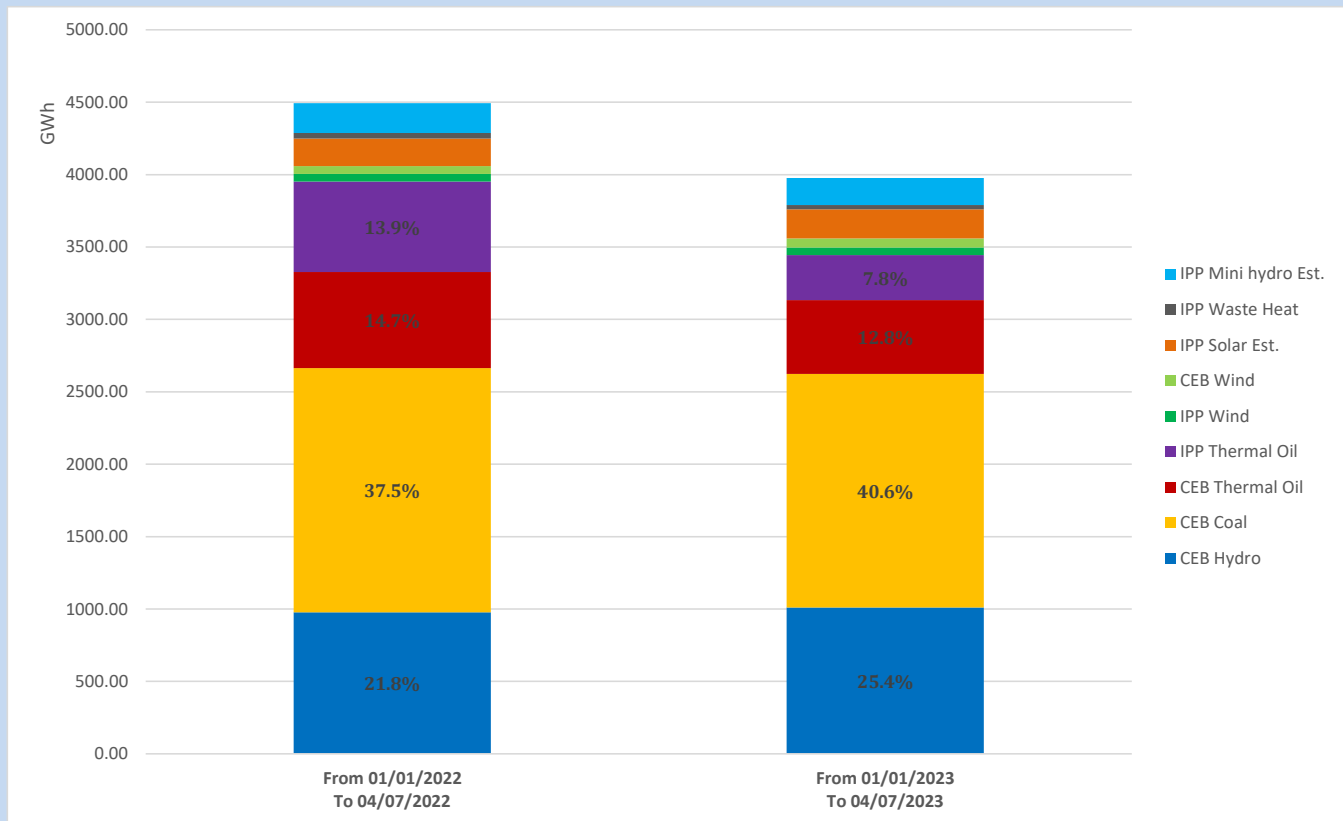
Solar Generation during

April 7, 2023

Based on Telemetered Power Stations only



Cumulative Dispatch Comparison with Last Year



The above figures are including contribution from roof top solar, non telemetered solar and mini hydro plants

Thermal Plant Fuel types

Power Station	Primary Fuel
CEB Thermal	
Sapugaskanda 1	Heavy Fuel
Sapugaskanda 2	Heavy Fuel
Kelanitissa Small Gas Turbines	Auto Diesel
GT 7 - Kelanitissa	Auto Diesel
Kelanitissa CCY	Naphtha or Diesel
Lakvijaya 1	Coal
Lakvijaya 2	Coal
Lakvijaya 3	Coal
Uthuru Janani	Heavy Fuel
Barge CEB	Heavy Fuel

Power Station	Primary Fuel
Private Thermal	
West Coast	Auto Diesel / Heavy Fuel

Major Incidents reported during the day

April 7, 2023

- 1) Mathugama - Kukule PS 132kV cct 01 & 02 tripped from both ends and A/R only from Mathugama end at 17:45hrs due to the operation of distance protection . At the same time , Kukule unit 01 tripped rejecting 26MW from the system. Mathugama - Kukule PS ccts were restored at 18:16hrs and Kukule
- 2) Dehiwala 132/33kV T/F 03 tripped from both ends at 3:18hrs (08.04.2023) with an indication of mechanical protection trip operated. The T/F is yet to be normalized.