

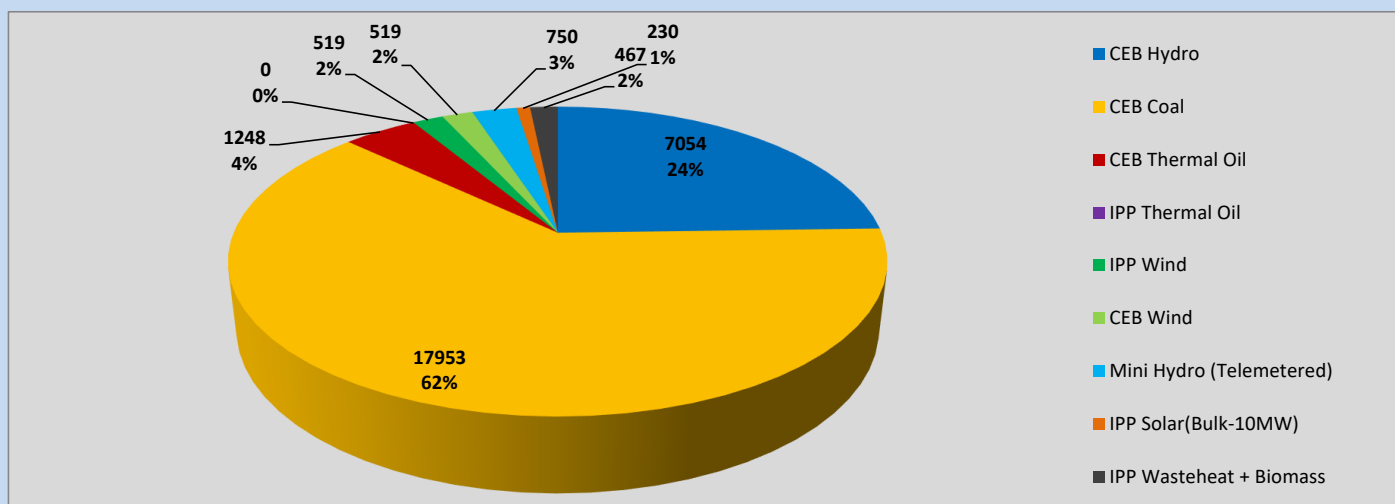
Generation and Reservoirs Statistics

May 6, 2023



PUBLIC UTILITIES COMMISSION OF SRI LANKA

Daily Generation Mix in MWh



Total Generation (Excluding estimated figures) =

28,740 MWh

Estimated figures of CEB generation report

Estimated unserved energy = 0.00 GWh

Estimated Mini Hydro (Non telemetered) = 3240 MWh

Estimated IPP Solar PV (Bulk 1-10MW) = 304 MWh

Estimated Solar Roof Top PV = 1920 MWh

Cumulative Dispatch

Following data excludes the contribution from roof top solar, non telemetered solar and mini hydro plants

For Current Month

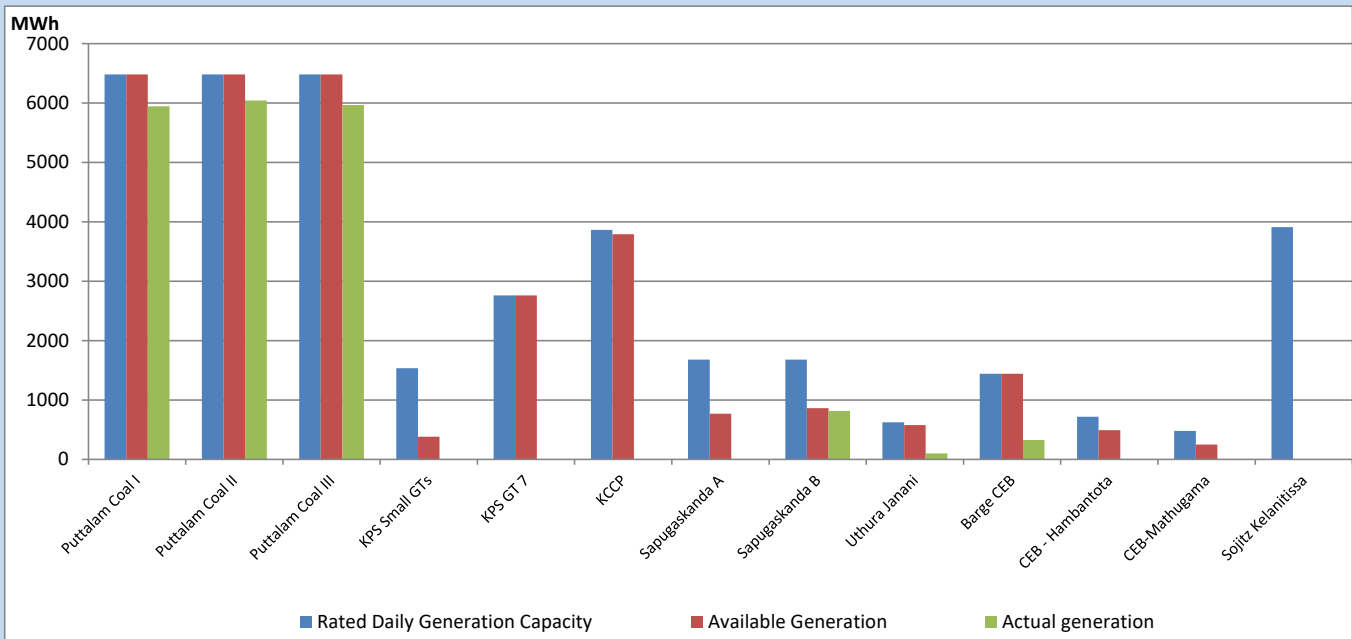
Category	Dispatch (GWh)	Percentage
CEB Hydro	43	21.01%
CEB Coal	111	54.69%
CEB Thermal Oil	21	10.48%
IPP Thermal	14	6.65%
SPP Wind	2	1.22%
CEB Wind	2	1.18%
Mini Hydro (Telemetered)	6	3.19%
IPP Solar (Bulk-10MW)	1	0.72%
IPP Wasteheat + BMP	2	0.86%
Total	203	

For Current Year

Category	Dispatch (GWh)	Percentage
CEB Hydro	1,244	26.15%
CEB Coal	2,098	44.10%
CEB Thermal Oil	676	14.22%
IPP Thermal	431	9.06%
SPP Wind	60	1.27%
CEB Wind	72	1.52%
Mini Hydro (Telemetered)	102	2.14%
IPP Solar (Bulk-10MW)	36	0.76%
IPP Wasteheat	37	0.77%
Total	4,757	

CEB owned Thermal Plant Dispatch

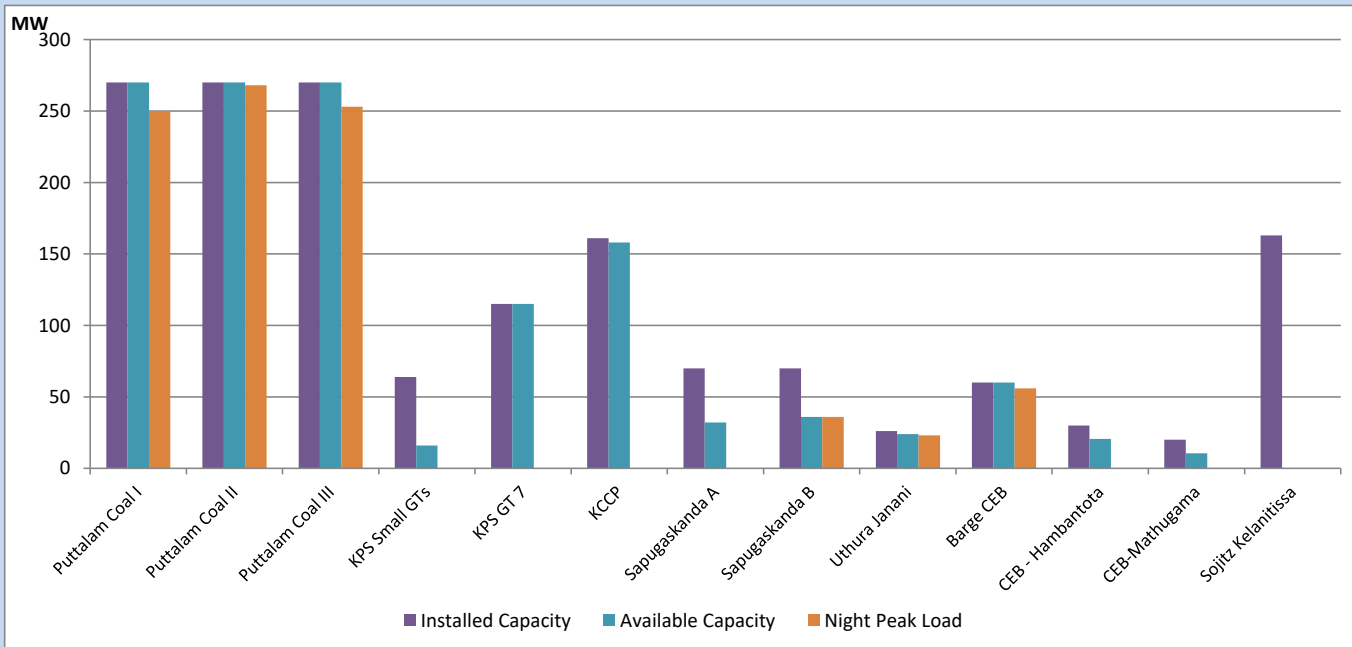
May 6, 2023



Available Generation is estimated based on plant availability at 6.00am on

May 7, 2023

CEB owned Thermal Plant Loading at the Night Peak



Note-

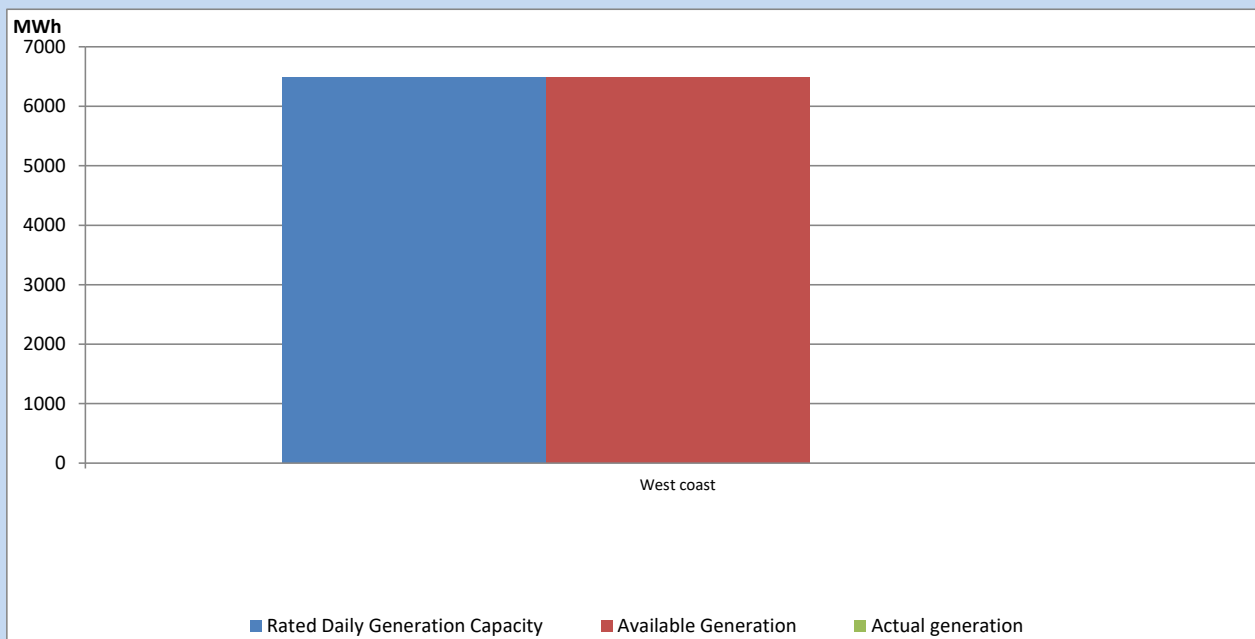
Plant availability is recorded at 6.00 am on

May 7, 2023

Sojitz Kelanitissa Plant is under Testing & Commissioning following to plant transfer procedure to CEB

IPP owned Thermal Plant Dispatch

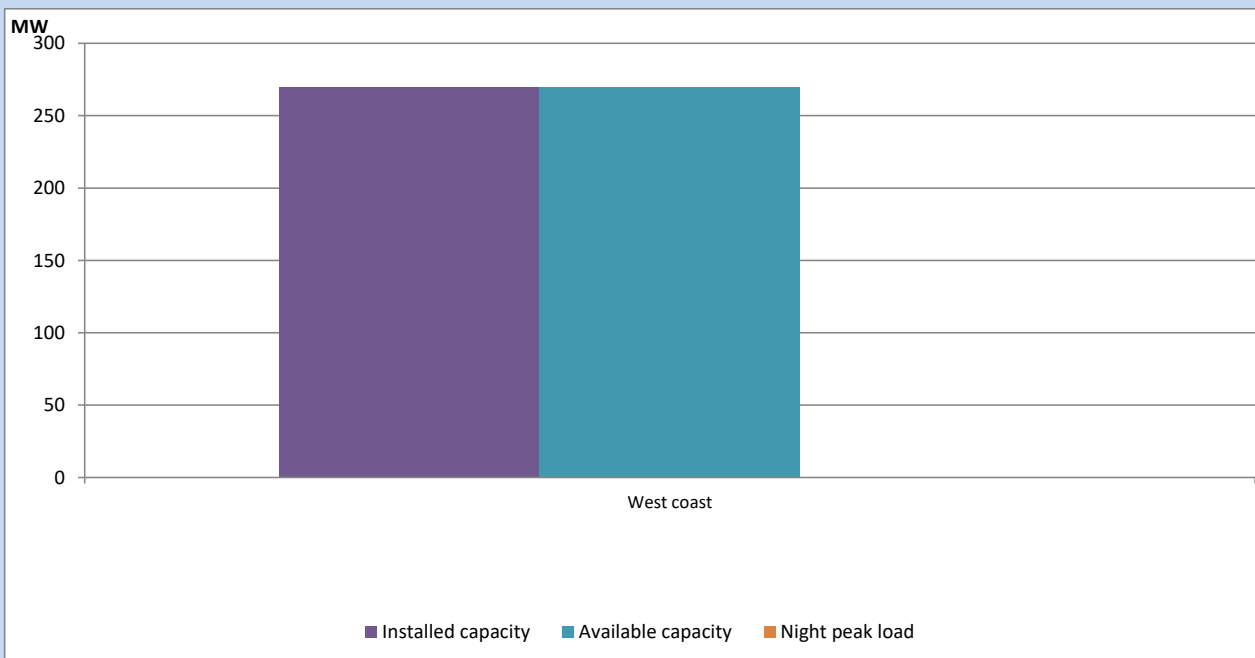
May 6, 2023



Available Generation is estimated based on plant availability at 6.00am on

May 7, 2023

IPP owned Thermal Plant Loading at the Night Peak

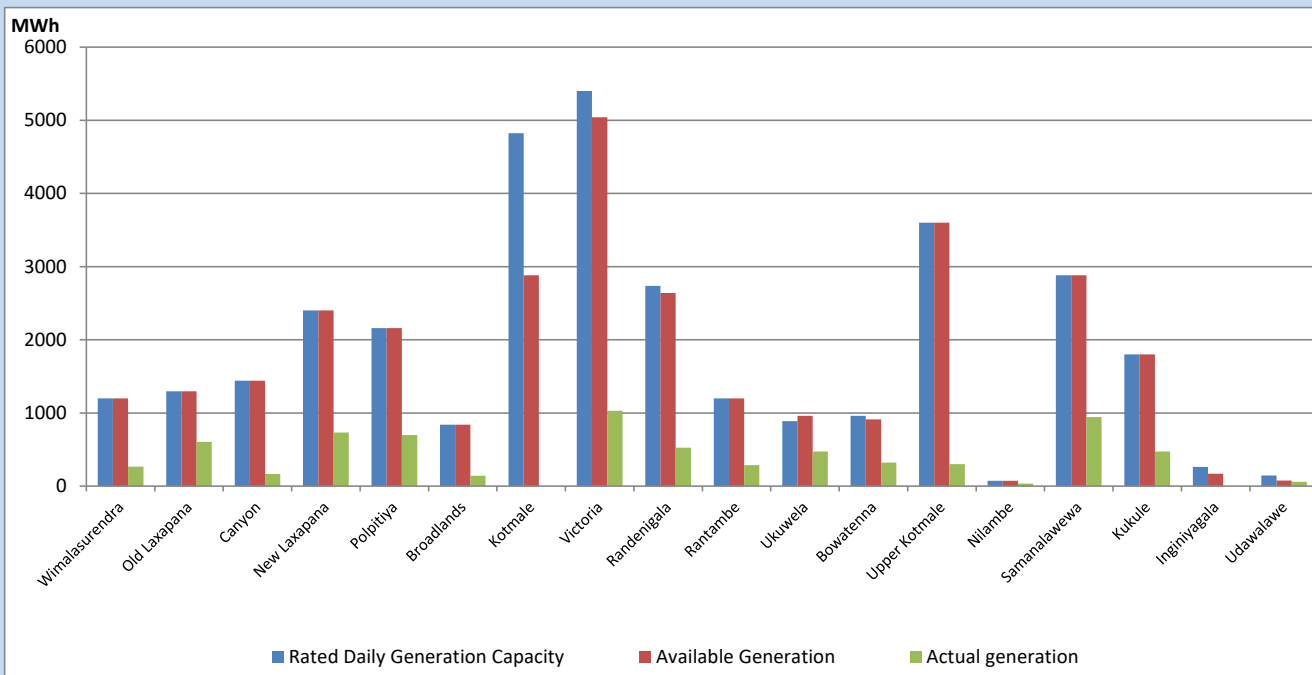


Note- Plant availability is recorded at 6.00 am on

May 7, 2023

Major Hydro Plant Dispatch

May 6, 2023

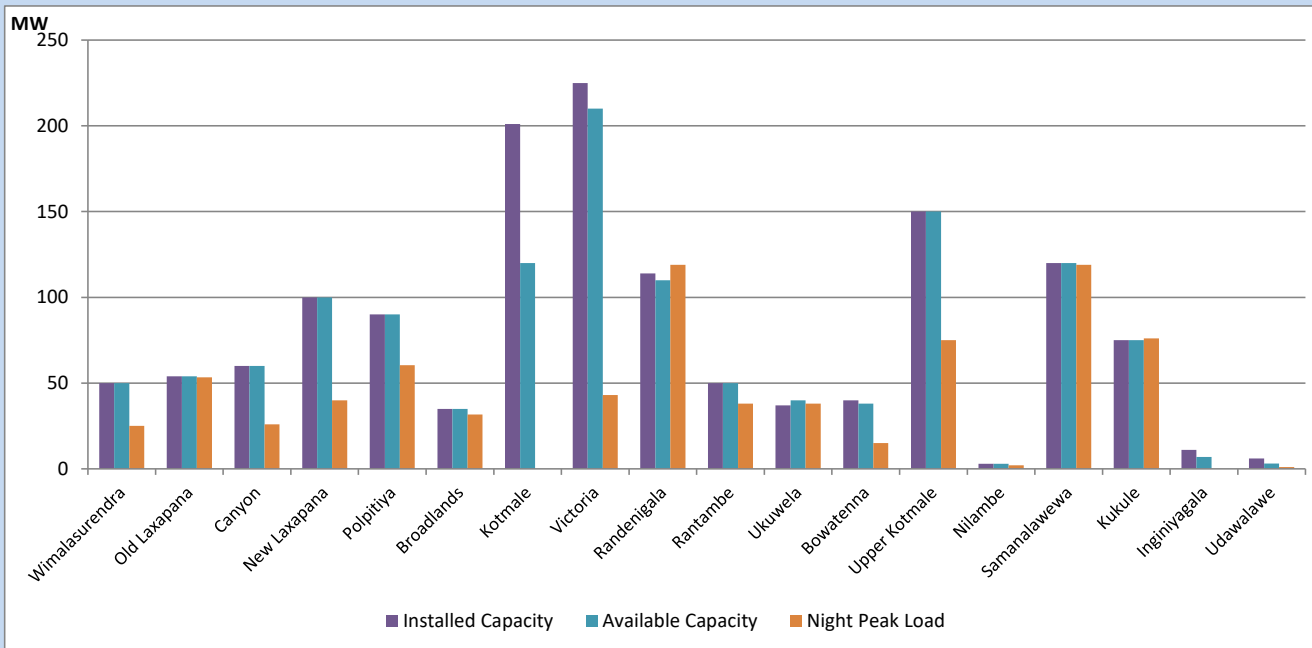


Available Generation is estimated based on plant availability at 6.00am on
Broadlands power plant is operating in the Commissioning Stage

May 7, 2023

Major Hydro Plant Loading at Night Peak

May 6, 2023



Note- Plant availability is recorded at 6.00 am on
Broadlands power plant is operating in the Commissioning Stage

May 7, 2023

Summary of Major Plant performance

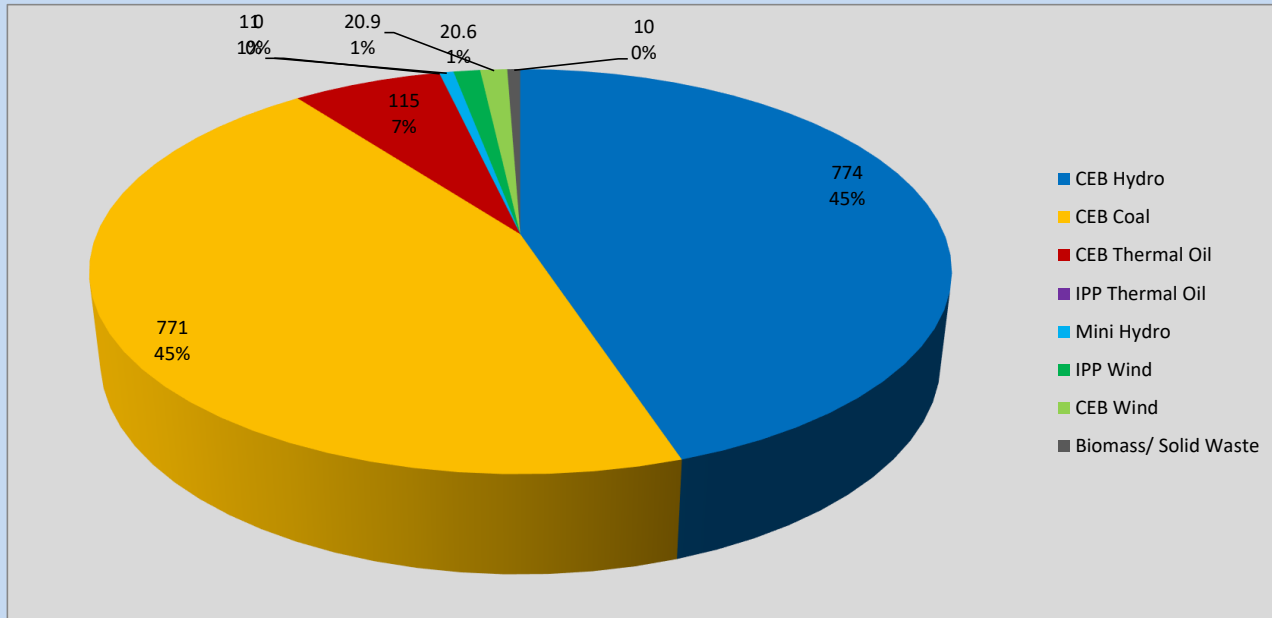
Plant	Installed Capacity	Plant Availability	Night peak Load	Plant Dispatch
	(MW)	(MW)	(MW)	(MWh)
Wimalasurendra	50	50	25	266
Old Laxapana	54	54	53	606
Canyon	60	60	26	167
New Laxapana	100	100	40	732
Polpitiya	90	90	60	697
Broadlands	35	35	32	140
Kotmale	201	120	0	0
Victoria	225	210	43	1,030
Randenigala	114	110	119	526
Rantambe	50	50	38	285
Ukuwela	37	40	38	472
Bowatenna	40	38	15	322
Upper Kotmale	150	150	75	301
Nilambe	3	3	2	33
Samanalawewa	120	120	119	944
Kukule	75	75	76	473
Inginiyagala	11	7	0	0
Udawalawe	6	3	1	60
Puttalam Coal I	270	270	250	5,943
Puttalam Coal II	270	270	268	6,044
Puttalam Coal III	270	270	253	5,966
KPS Small GTs	64	16	0	0
KPS GT 7	115	115	0	0
KCCP	161	158	0	0
Sapugaskanda A	70	32	0	0
Sapugaskanda B	70	36	36	818
Uthura Janani	26	24	23	102
Barge CEB	60	60	56	328
CEB-Hambantota	30	21	0	0
CEB-Mathugama	20	11	0	0
ACE Matara	24	0	0	0
Asia Power	50	0	0	0
Sojitz Kelanitissa	163	0	0	0
West Coast	270	270	0	0
Nothern Power	36	0	0	0
ACE Embilipitiya	93	0	0	0
Total	3,483	2,867	1,711	28,740

Plant availability is the availability recorded at 6 am on

May 7, 2023

Contribution to the Night Peak in MW

May 6, 2023

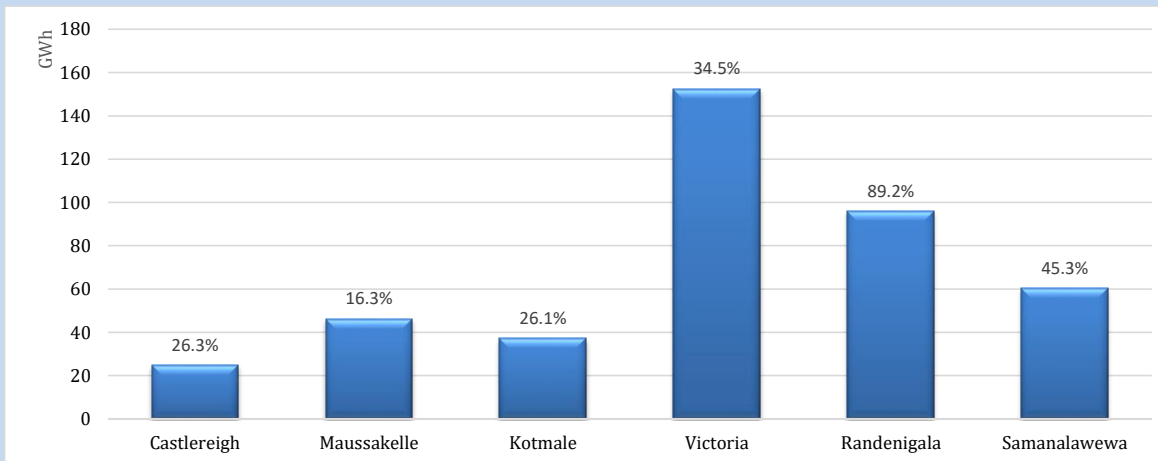


Night Peak*	1,722 MW
Day Peak	1,147 MW
Minimum Demand	1,000 MW

Above figures are excluding contribution from roof top solar, non telemetered solar and mini hydro plants

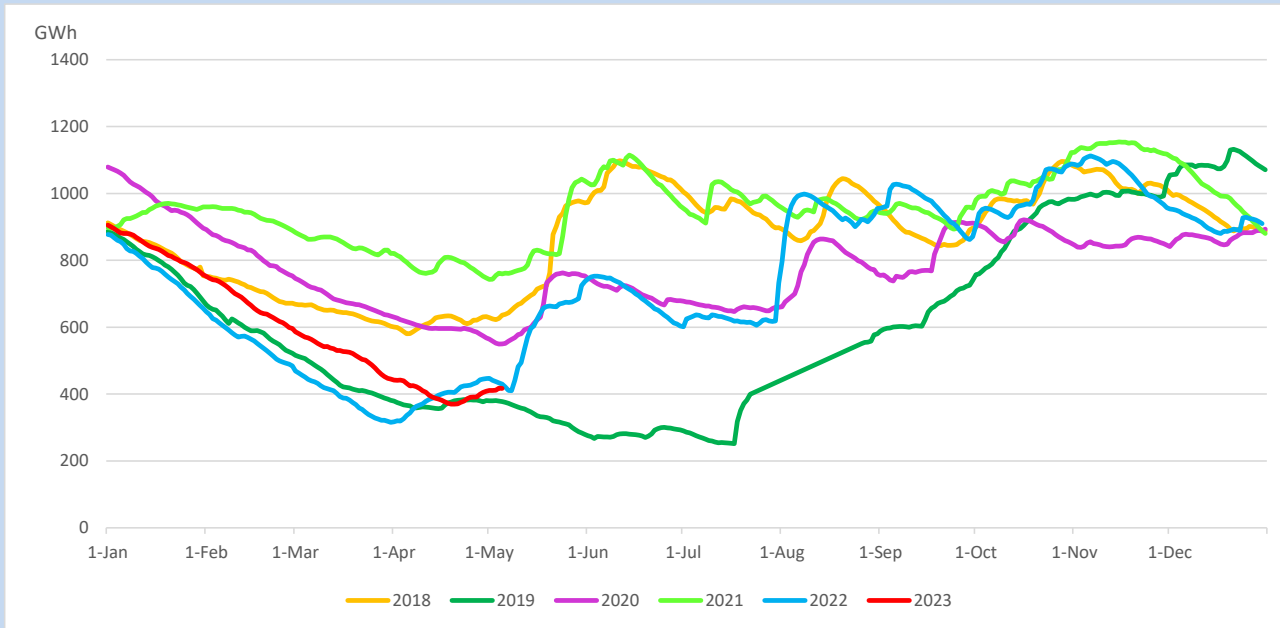
Reservoir Levels -

as at 06.00 Hr on May 7, 2023

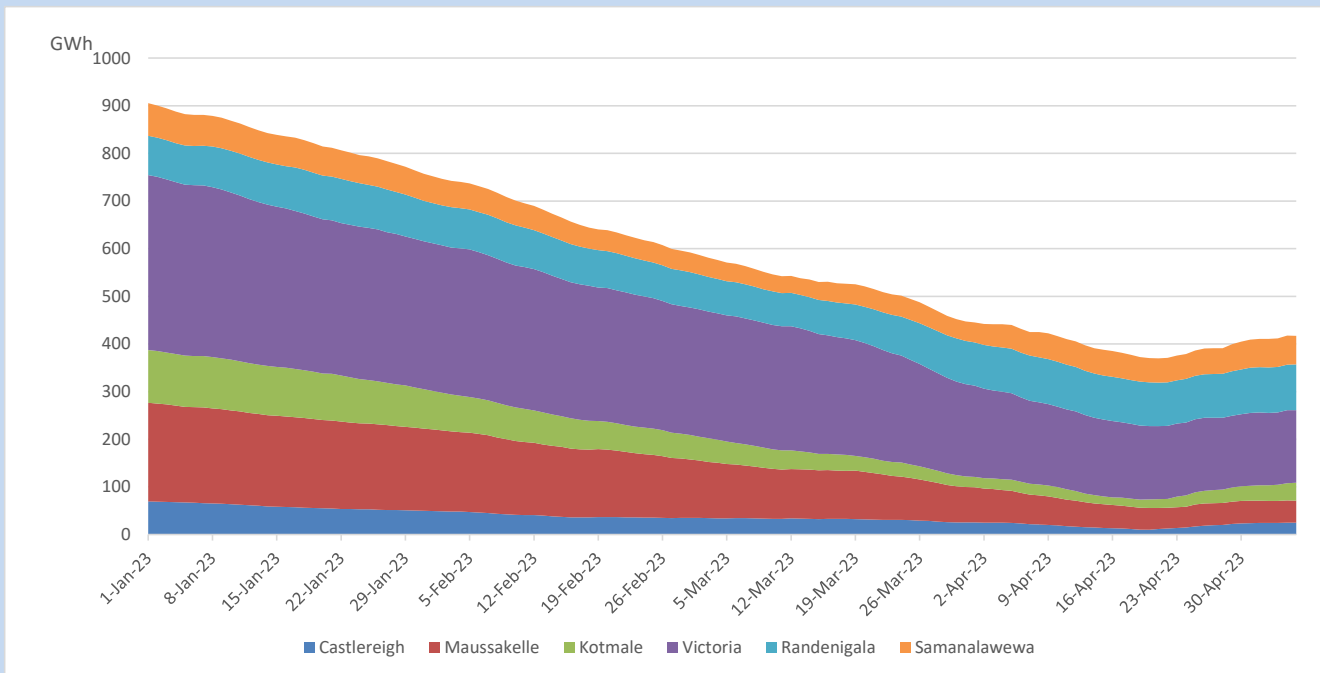


Total Reservoir Level	417.2 GWh
% of Total capacity	34.6%

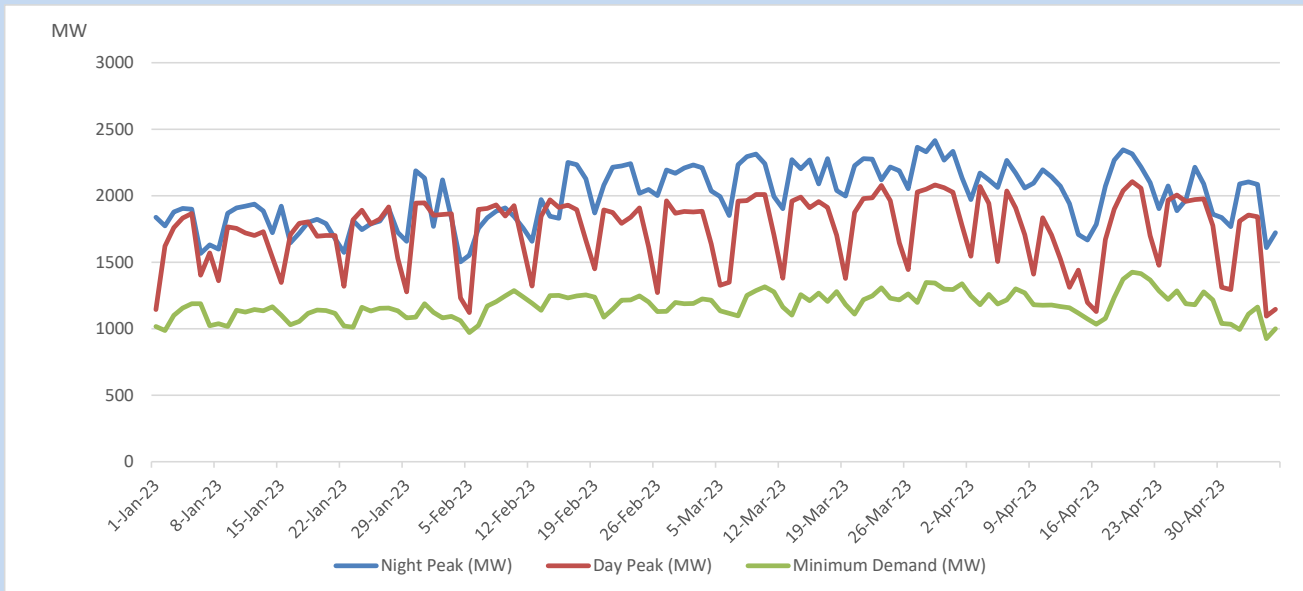
Comparison of Total Reservoir Storage Levels with Past Years



Variation of Major Hydro Reservoir Levels in the current year (GWh)



Variation of Demand during the current year

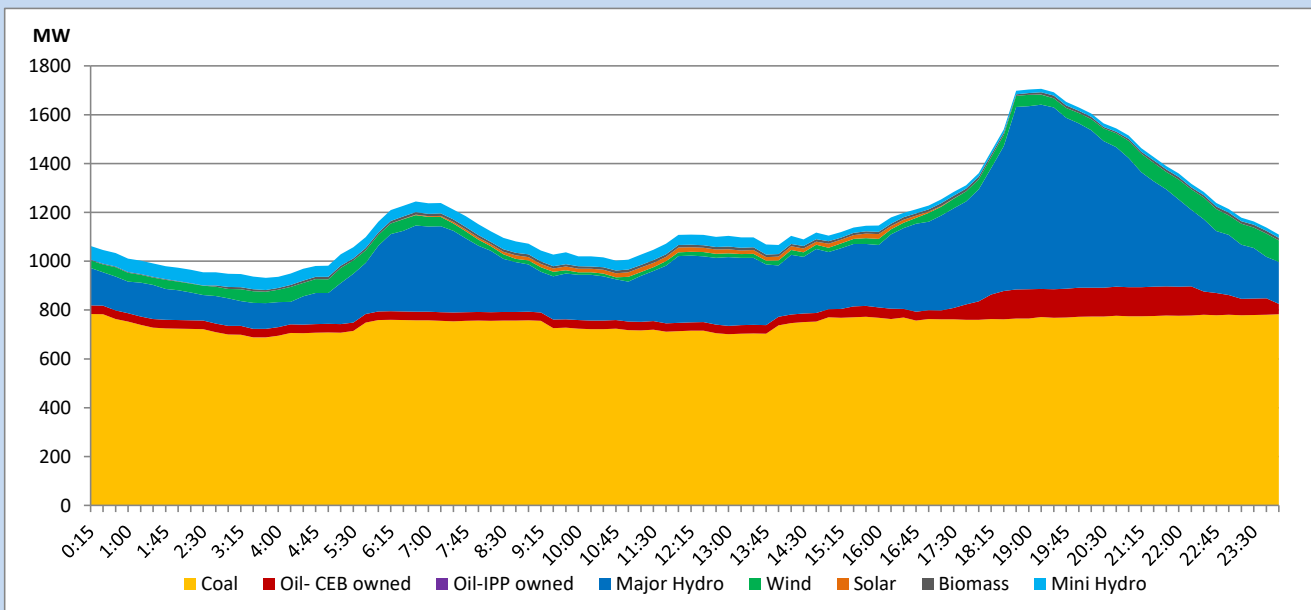


The above figures are excluding contribution from roof top solar, non telemetered solar and mini hydro plants

Daily Load Curve

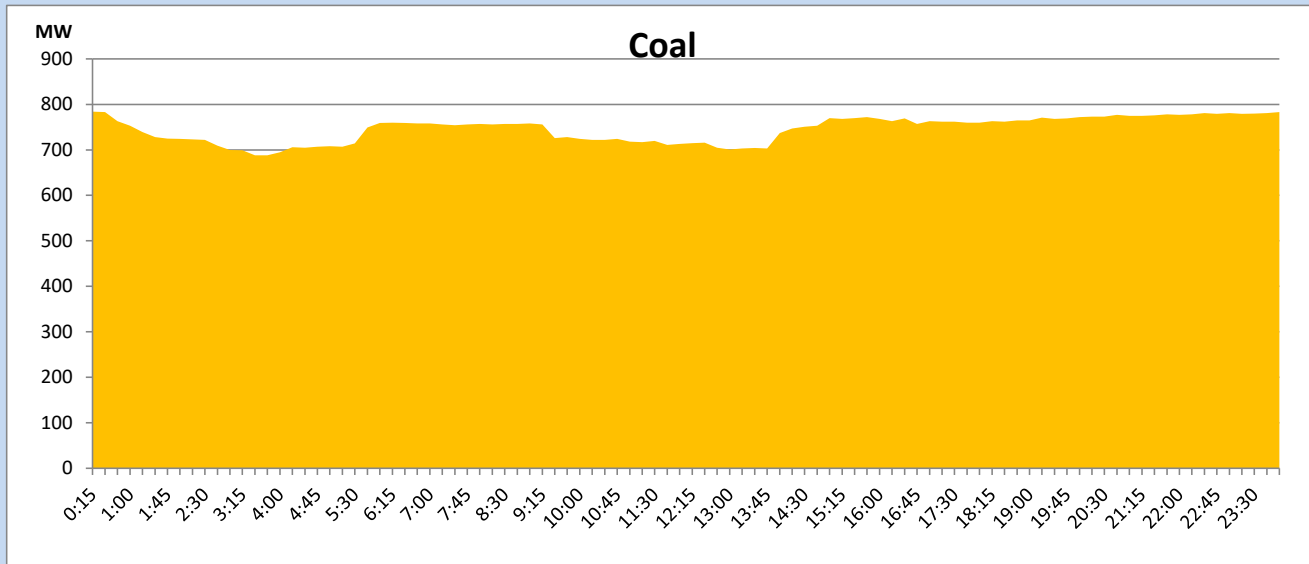
May 6, 2023

Solar and wind data is based on Telemetered Power Stations only



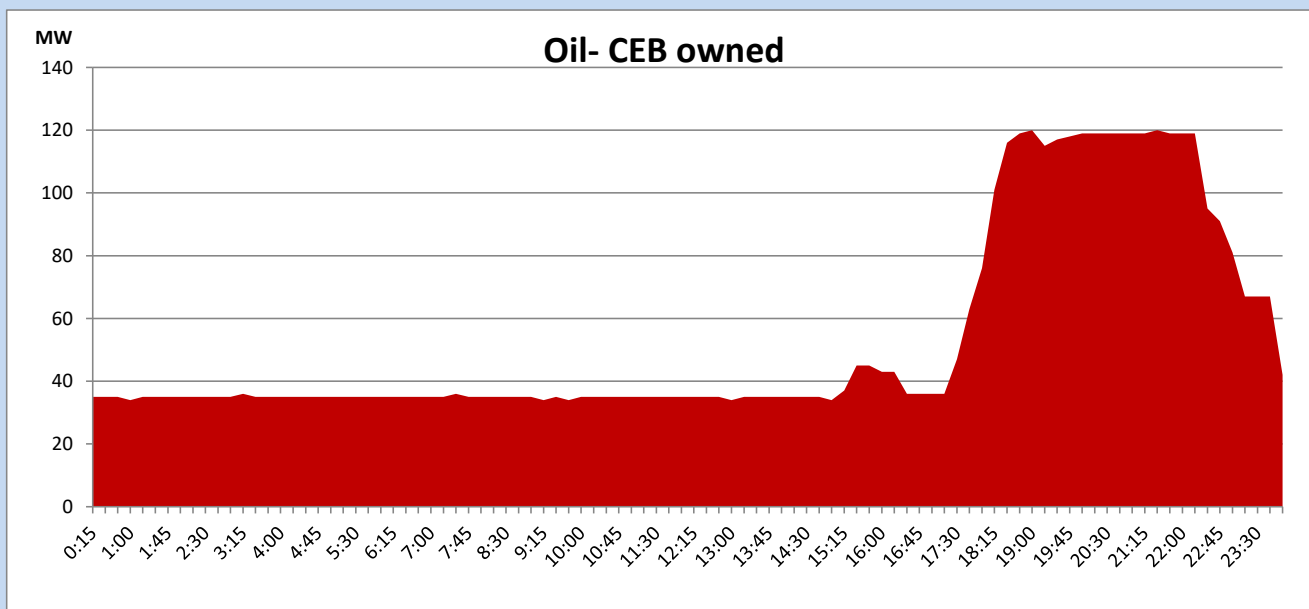
Coal Generation during

May 6, 2023



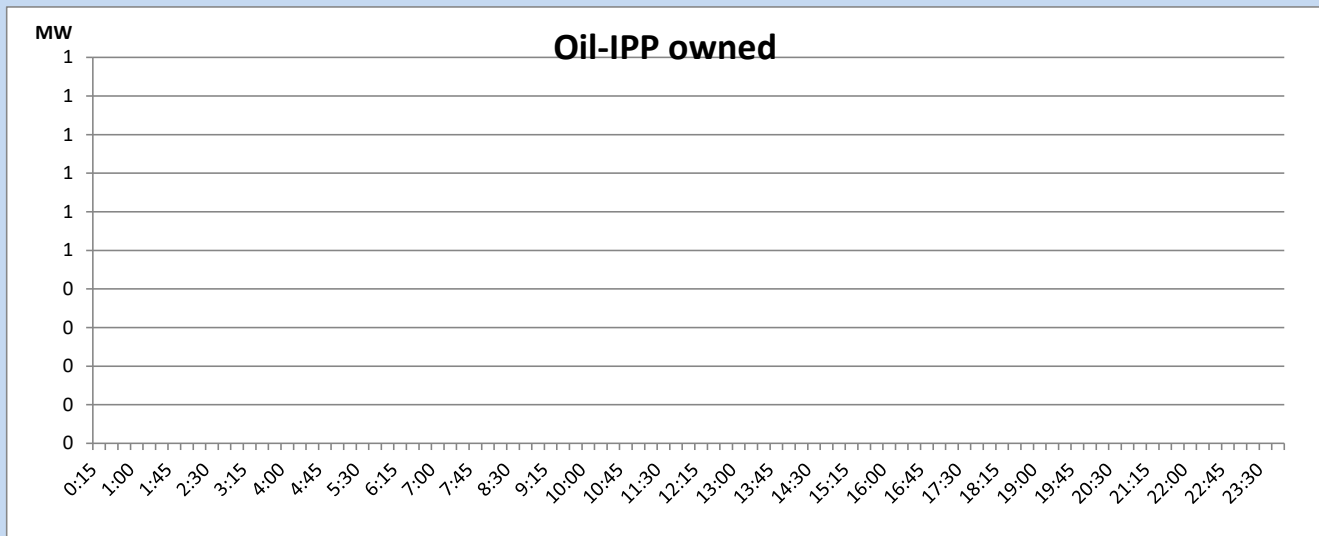
CEB Oil Plant Generation during

May 6, 2023



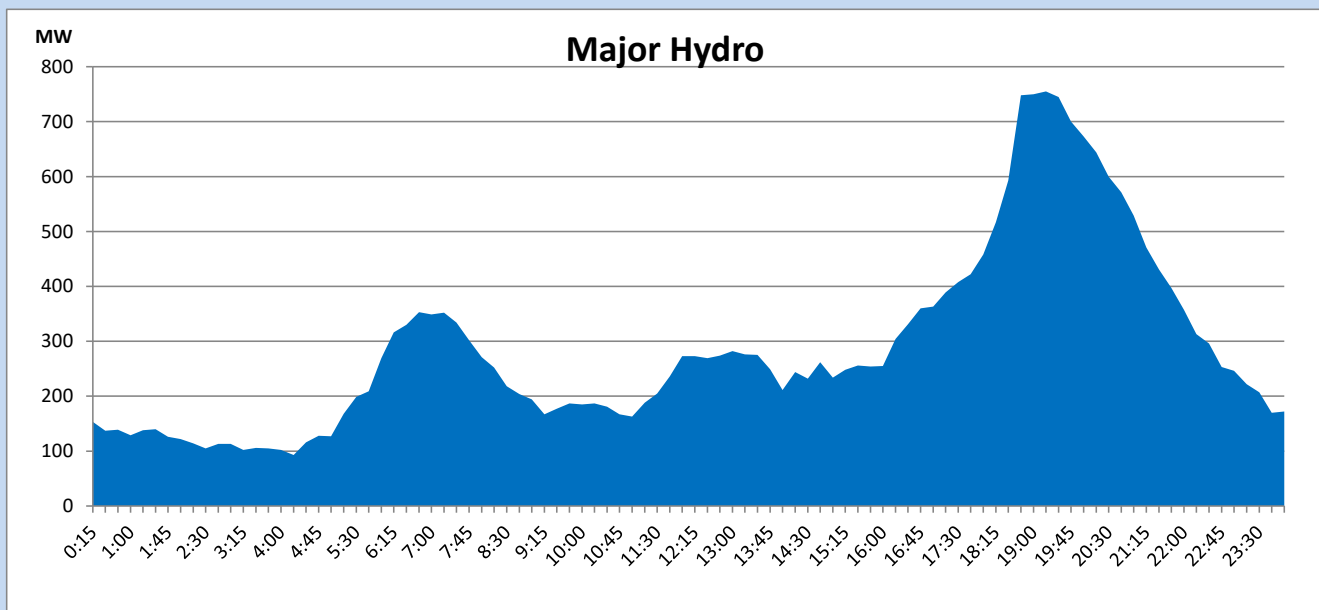
IPP Oil Plant Generation during

May 6, 2023



Major Hydro Generation during

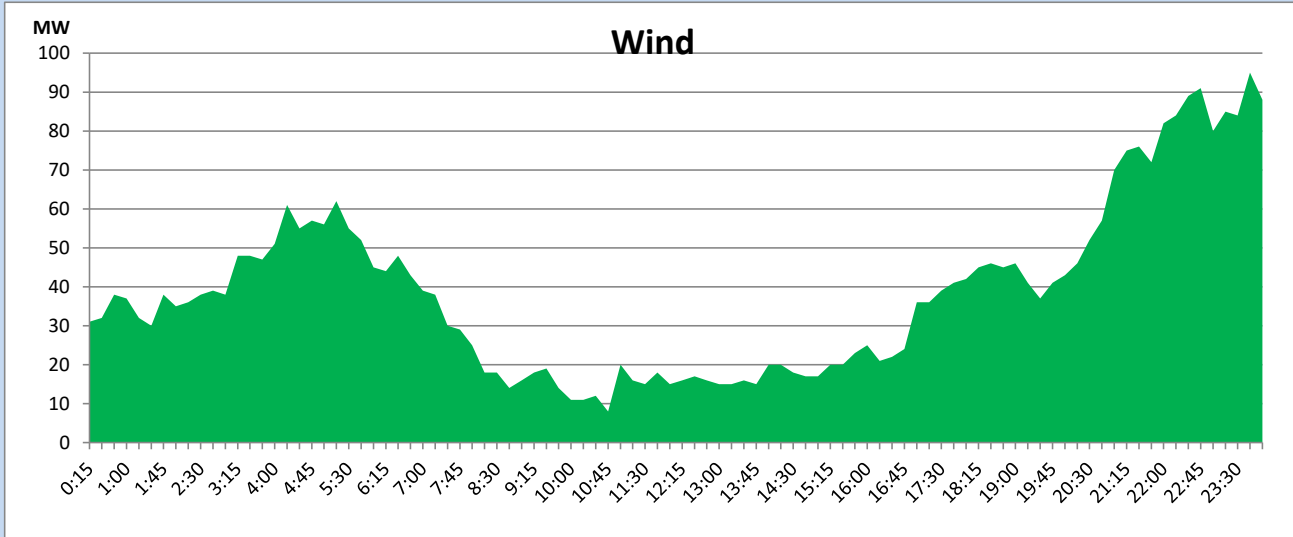
May 6, 2023



Wind Generation during

May 6, 2023

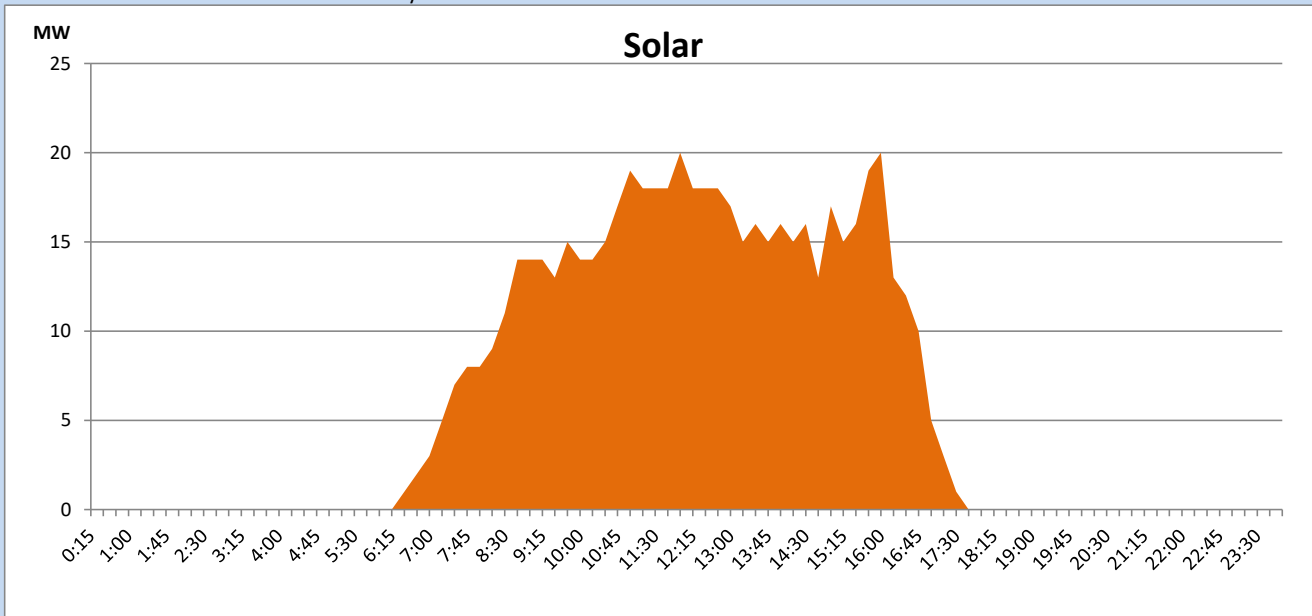
Based on Telemetered Power Stations only



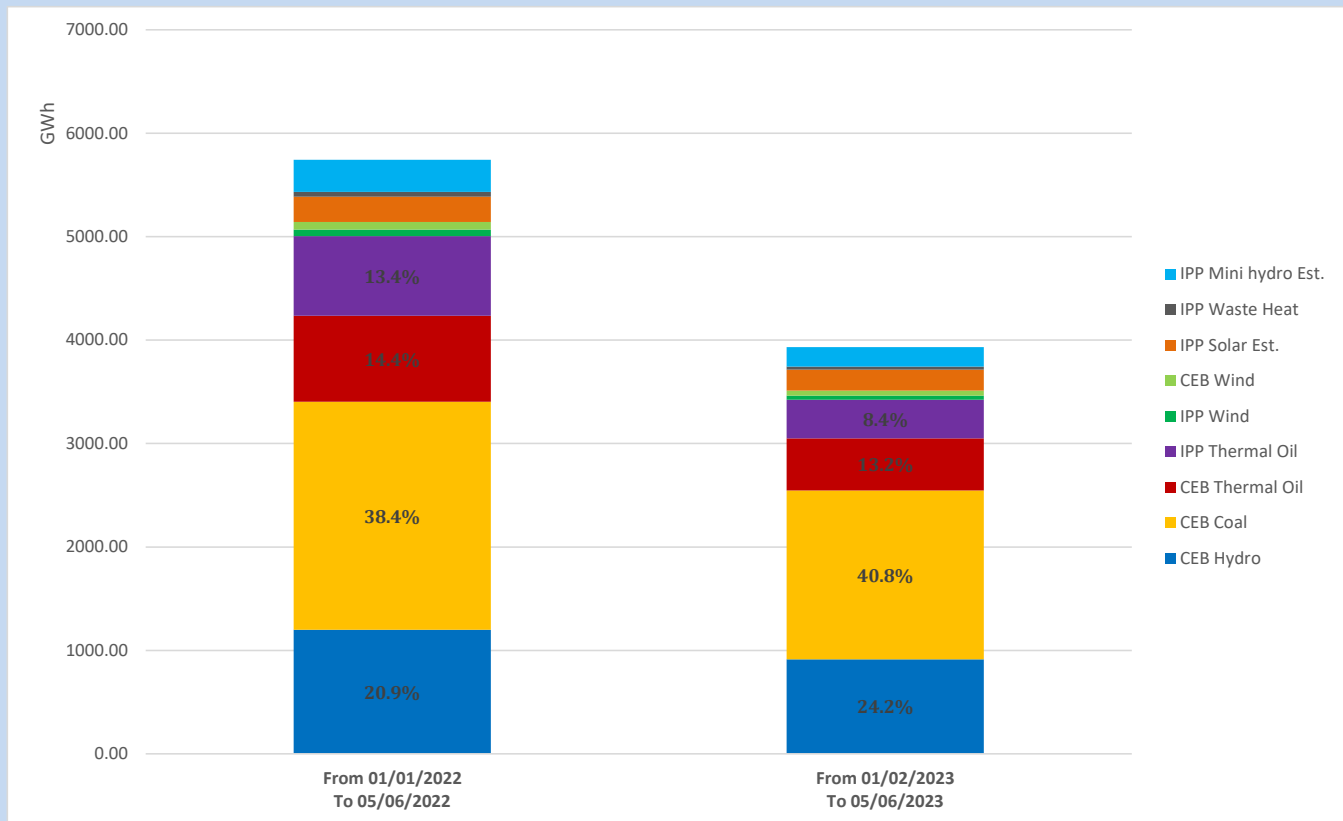
Solar Generation during

May 6, 2023

Based on Telemetered Power Stations only



Cumulative Dispatch Comparison with Last Year



The above figures are including contribution from roof top solar, non telemetered solar and mini hydro plants

Thermal Plant Fuel types

Power Station	Primary Fuel
CEB Thermal	
Sapugaskanda 1	Heavy Fuel
Sapugaskanda 2	Heavy Fuel
Kelanitissa Small Gas Turbines	Auto Diesel
GT 7 - Kelanitissa	Auto Diesel
Kelanitissa CCY	Naphtha or Diesel
Lakvijaya 1	Coal
Lakvijaya 2	Coal
Lakvijaya 3	Coal
Uthuru Janani	Heavy Fuel
Barge CEB	Heavy Fuel

Power Station	Primary Fuel
Private Thermal	
West Coast	Auto Diesel / Heavy Fuel

Major Incidents reported during the day

May 6, 2023

- 1) Kaluthara 132/33kV T/F 01 which was tripped on 04/05/2023, restored at 12:21hrs.
- 2) LVPS unit 01 & 03 generation was limited to 250MW(net), due to wet coal condition.
- 3) N'Chilaw - Puttalam 132kV cct 02 tripped from both ends at 2:34hrs (07/05/2023) due to operation of Distance protection. N'Chilaw - Puttalam cct 02 restored at 2:44hrs (07/05/2023).