

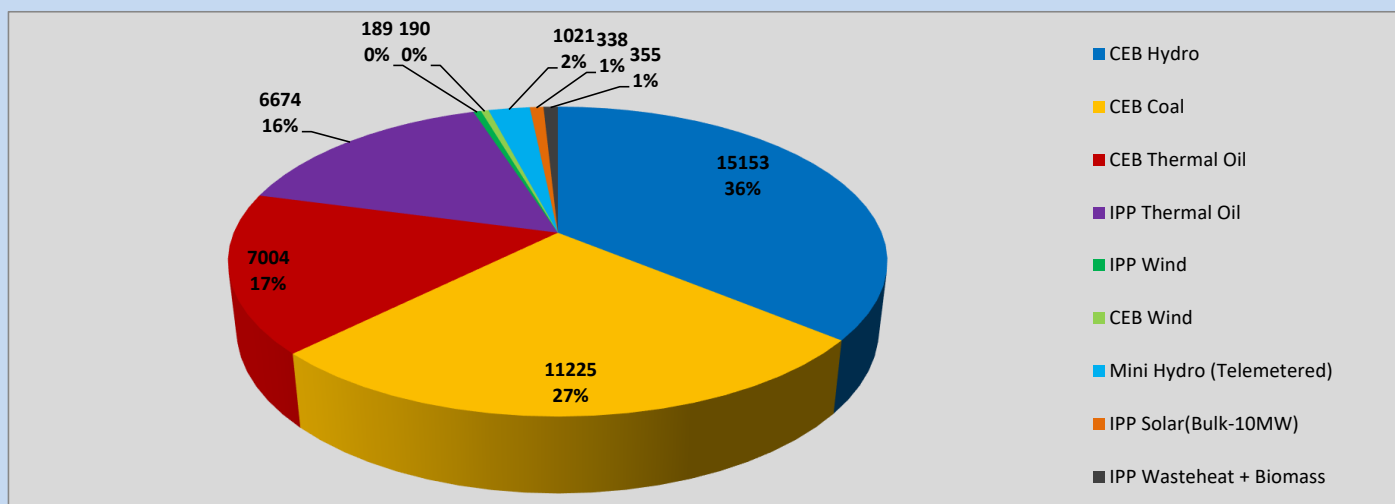
Generation and Reservoirs Statistics

April 6, 2023



PUBLIC UTILITIES COMMISSION OF SRI LANKA

Daily Generation Mix in MWh



Total Generation (Excluding estimated figures) =

42,149 MWh

Estimated figures of CEB generation report

Estimated unserved energy = 0.00 GWh
 Estimated Mini Hydro (Non telemetered) = 1115 MWh
 Estimated IPP Solar PV (Bulk 1-10MW) = 304 MWh
 Estimated Solar Roof Top PV = 1640 MWh

Cumulative Dispatch

Following data excludes the contribution from roof top solar, non telemetered solar and mini hydro plants

For Current Month

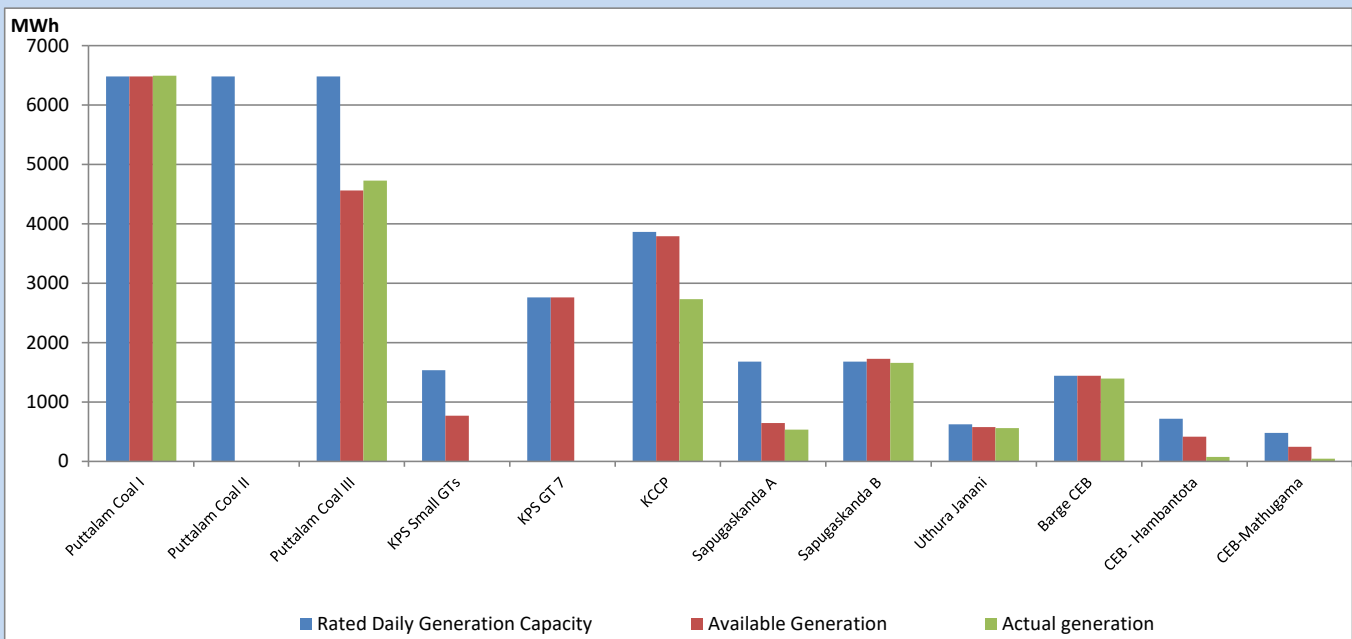
Category	Dispatch (GWh)	
CEB Hydro	76	32.47%
CEB Coal	80	33.92%
CEB Thermal Oil	31	13.19%
IPP Thermal	35	14.69%
SPP Wind	1	0.61%
CEB Wind	2	0.79%
Mini Hydro (Telemetered)	6	2.59%
IPP Solar (Bulk-10MW)	2	0.92%
IPP Wasteheat + BMP	2	0.82%
Total	235	

For Current Year

Category	Dispatch (GWh)	
CEB Hydro	998	27.32%
CEB Coal	1,602	43.89%
CEB Thermal Oil	501	13.72%
IPP Thermal	305	8.34%
SPP Wind	52	1.43%
CEB Wind	62	1.70%
Mini Hydro (Telemetered)	75	2.05%
IPP Solar (Bulk-10MW)	28	0.76%
IPP Wasteheat	28	0.77%
Total	3,651	

CEB owned Thermal Plant Dispatch

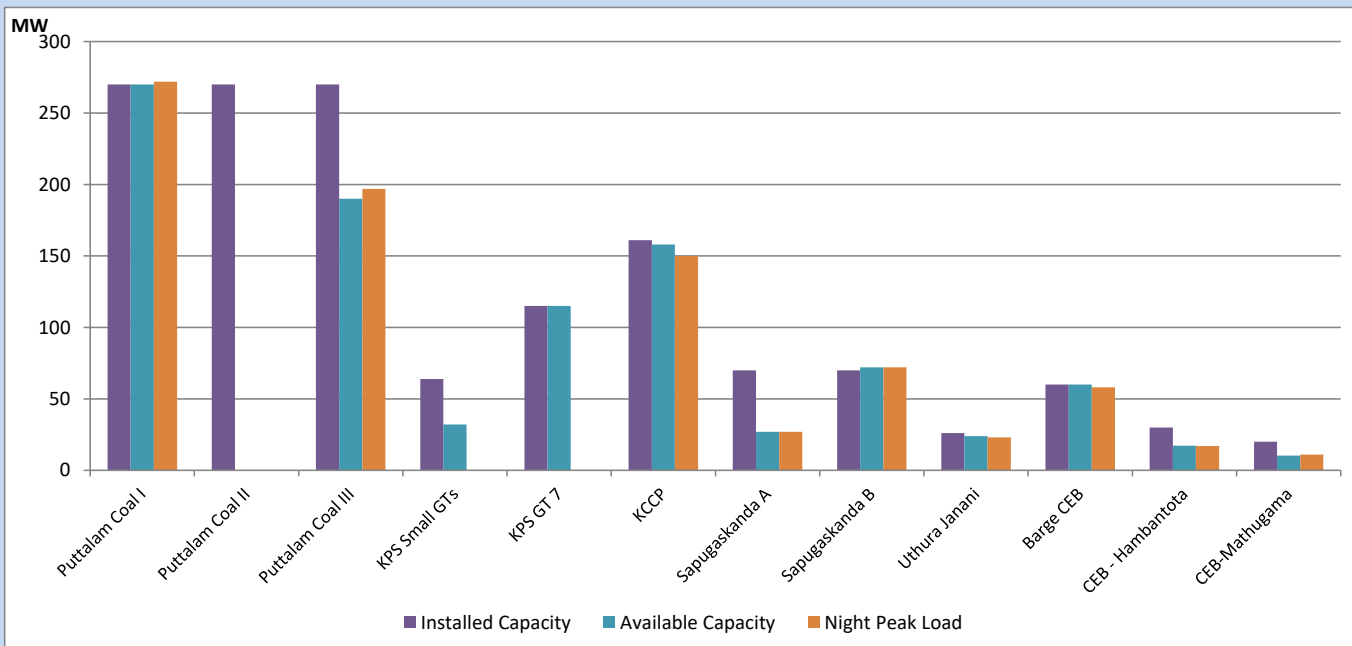
April 6, 2023



Available Generation is estimated based on plant availability at 6.00am on

April 7, 2023

CEB owned Thermal Plant Loading at the Night Peak

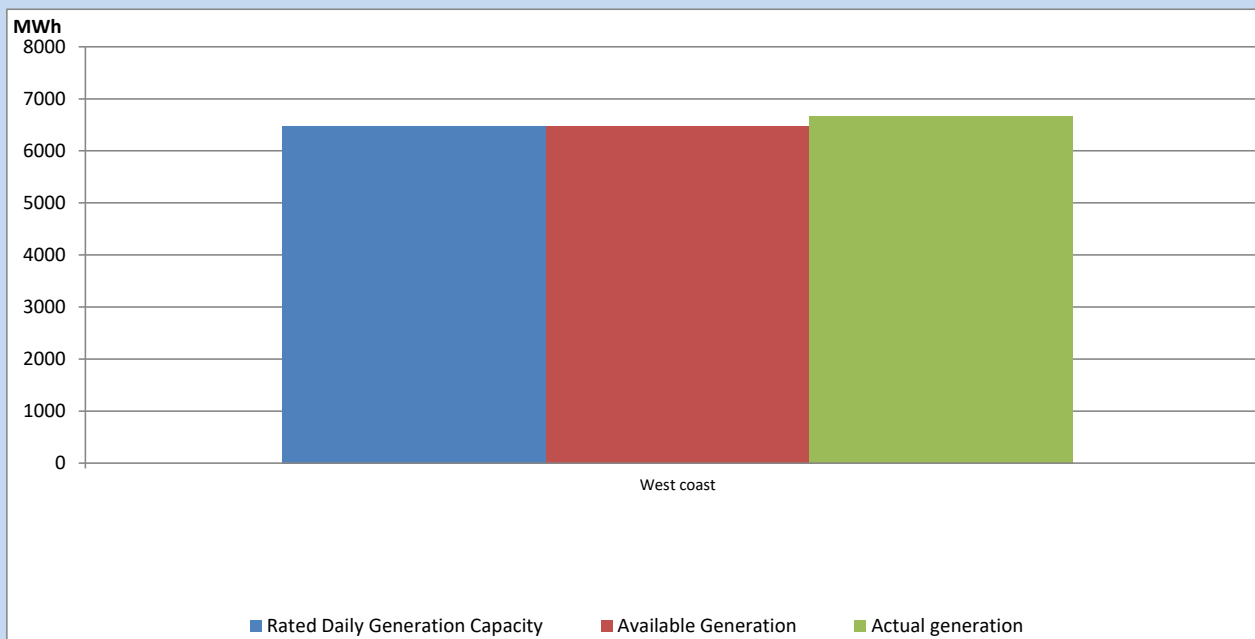


Note- Plant availability is recorded at 6.00 am on

April 7, 2023

IPP owned Thermal Plant Dispatch

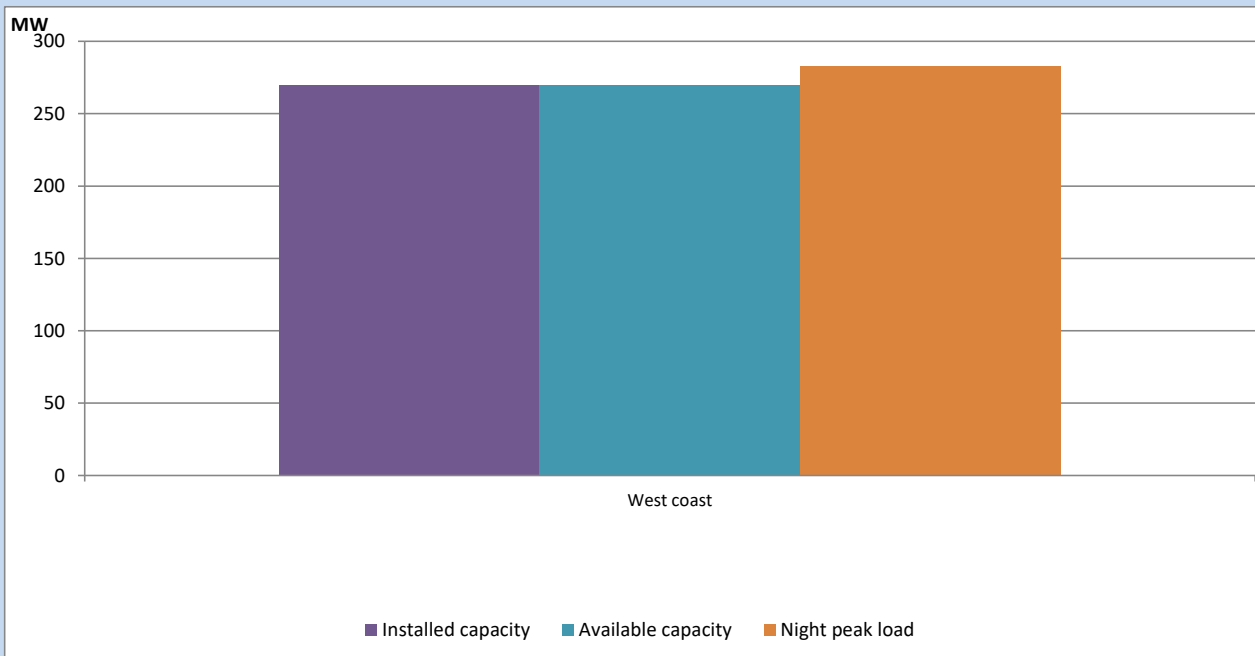
April 6, 2023



Available Generation is estimated based on plant availability at 6.00am on

April 7, 2023

IPP owned Thermal Plant Loading at the Night Peak

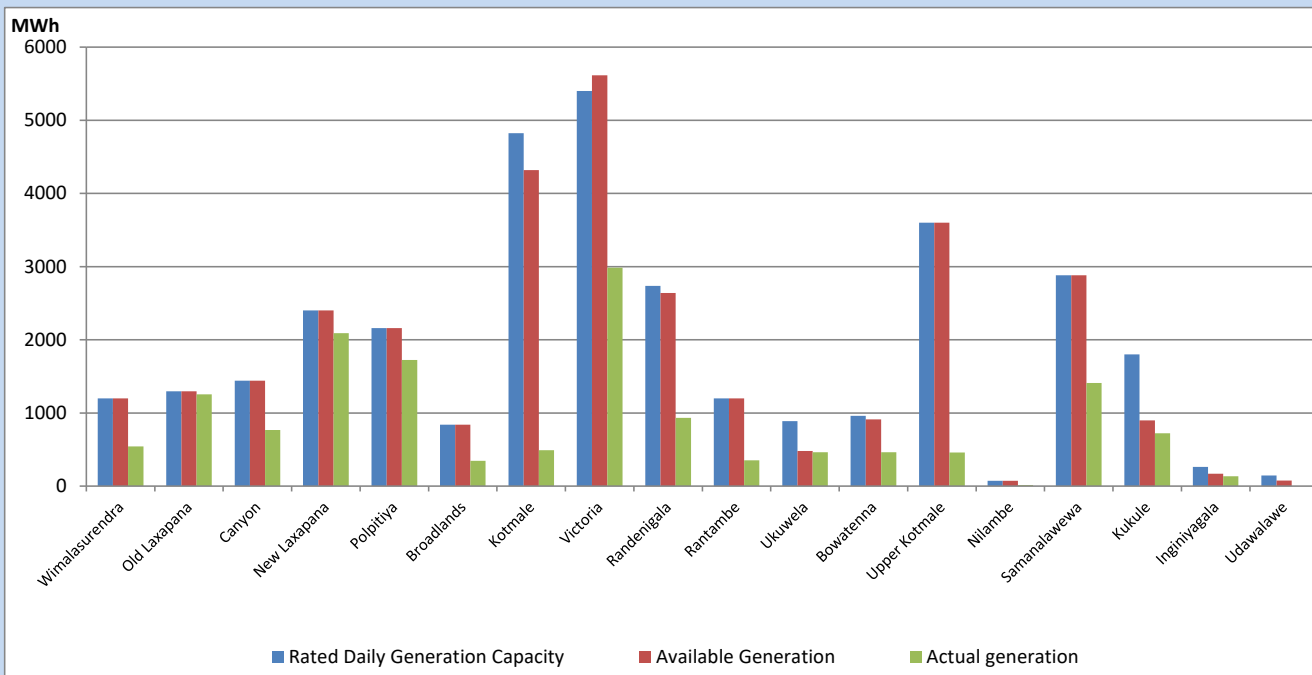


Note- Plant availability is recorded at 6.00 am on

April 7, 2023

Major Hydro Plant Dispatch

April 6, 2023

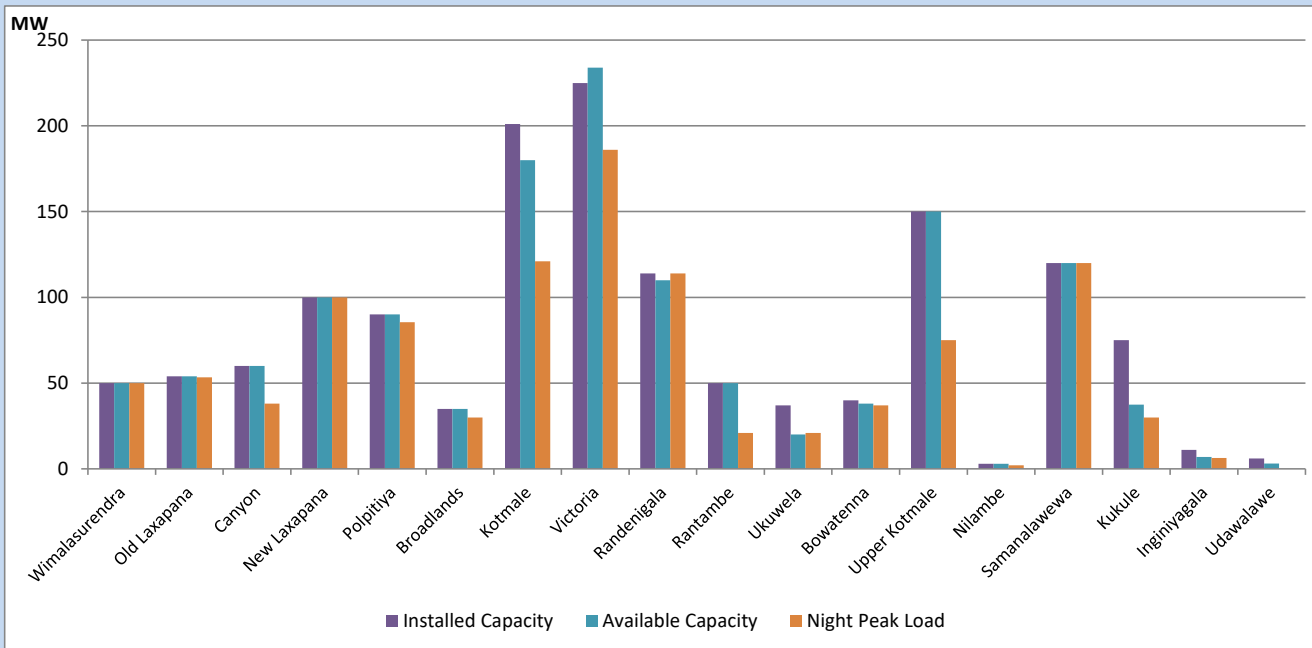


Available Generation is estimated based on plant availability at 6.00am on
Broadlands power plant is operating in the Commissioning Stage

April 7, 2023

Major Hydro Plant Loading at Night Peak

April 6, 2023



Note- Plant availability is recorded at 6.00 am on
Broadlands power plant is operating in the Commissioning Stage

April 7, 2023

Summary of Major Plant performance

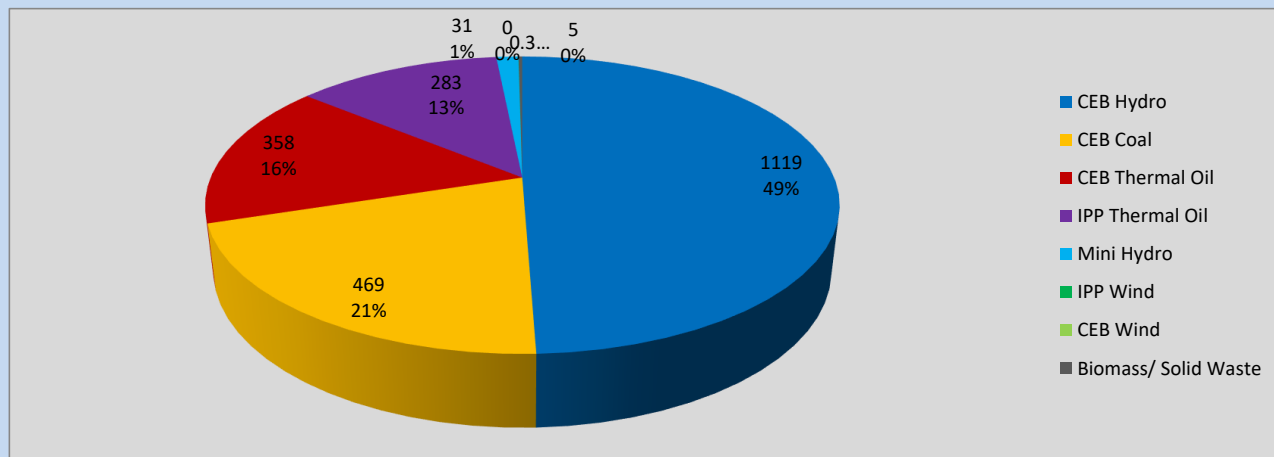
Plant	Installed Capacity	Plant Availability	Night peak Load	Plant Dispatch
	(MW)	(MW)	(MW)	(MWh)
Wimalasurendra	50	50	50	543
Old Laxapana	54	54	53	1,253
Canyon	60	60	38	768
New Laxapana	100	100	100	2,092
Polpitiya	90	90	86	1,723
Broadlands	35	35	30	344
Kotmale	201	180	121	490
Victoria	225	234	186	2,986
Randenigala	114	110	114	933
Rantambe	50	50	21	352
Ukuwela	37	20	21	462
Bowatenna	40	38	37	463
Upper Kotmale	150	150	75	460
Nilambe	3	3	2	15
Samanalawewa	120	120	120	1,411
Kukule	75	38	30	722
Inginiyagala	11	7	6	136
Udawalawe	6	3	0	0
Puttalam Coal I	270	270	272	6,496
Puttalam Coal II	270	0	0	0
Puttalam Coal III	270	190	197	4,729
KPS Small GTs	64	32	0	0
KPS GT 7	115	115	0	0
KCCP	161	158	150	2,731
Sapugaskanda A	70	27	27	537
Sapugaskanda B	70	72	72	1,660
Uthura Janani	26	24	23	562
Barge CEB	60	60	58	1,394
CEB-Hambantota	30	17	17	74
CEB-Mathugama	20	10	11	46
ACE Matara	24	0	0	0
Asia Power	50	0	0	0
Sojitz Kelanitissa	163	0	0	0
West Coast	270	270	283	6,674
Nothern Power	36	0	0	0
ACE Embilipitiya	93	0	0	0
Total	3,483	2,587	2,236	42,149

Plant availability is the availability recorded at 6 am on

April 7, 2023

Contribution to the Night Peak in MW

April 6, 2023

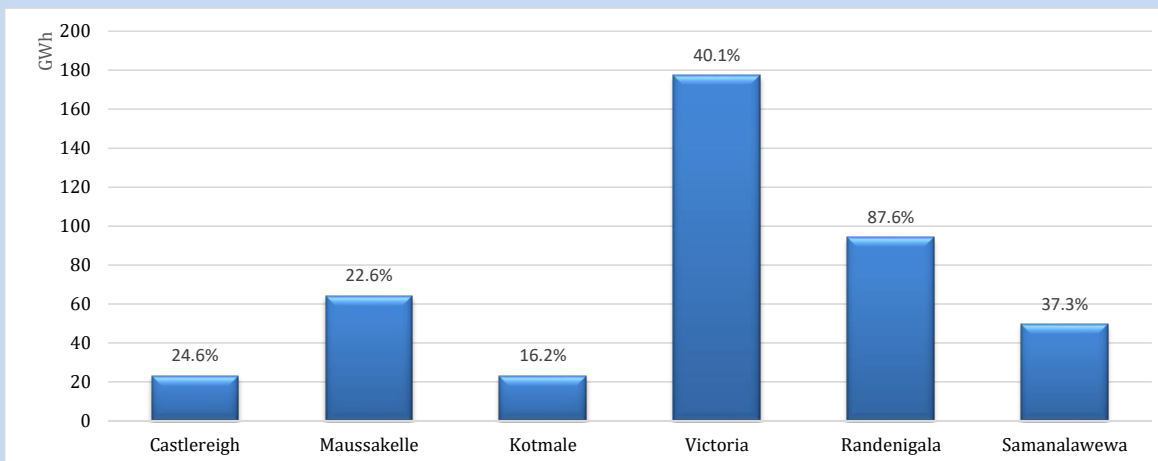


Night Peak*	2,265 MW
Day Peak	2,036 MW
Minimum Demand	1,217 MW

Above figures are excluding contribution from roof top solar, non telemetered solar and mini hydro plants

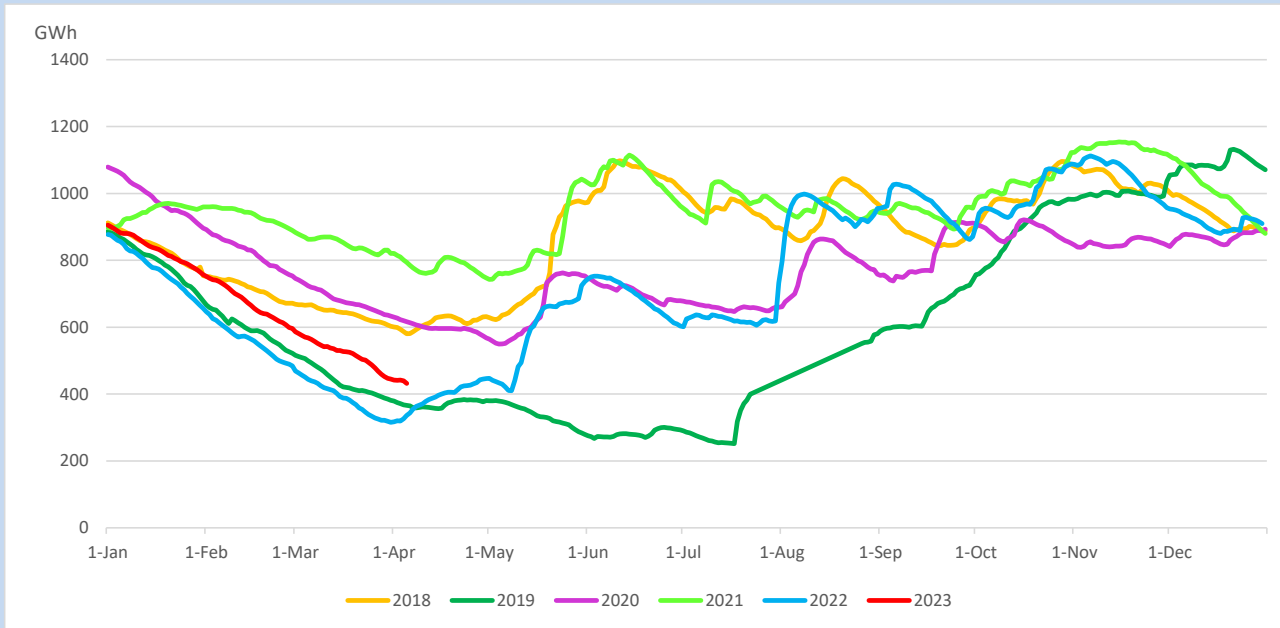
Reservoir Levels -

as at 06.00 Hr on April 7, 2023

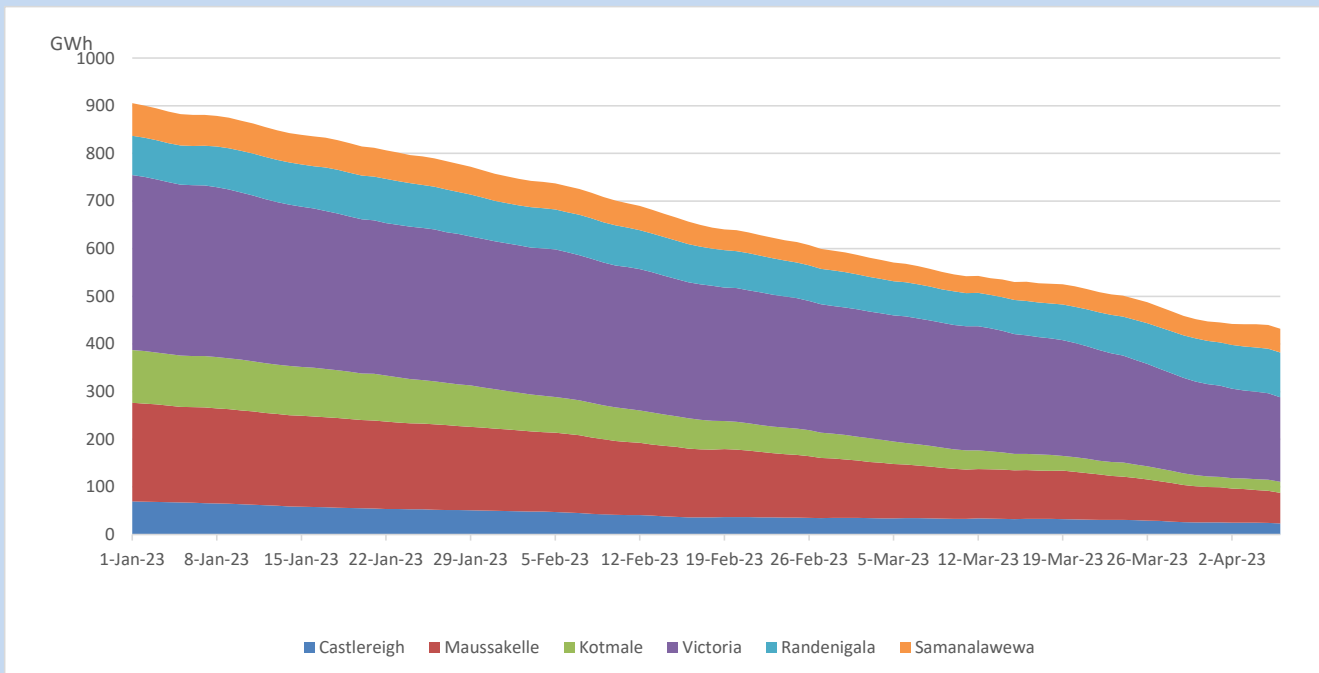


Total Reservoir Level	431.9 GWh
% of Total capacity	35.8%

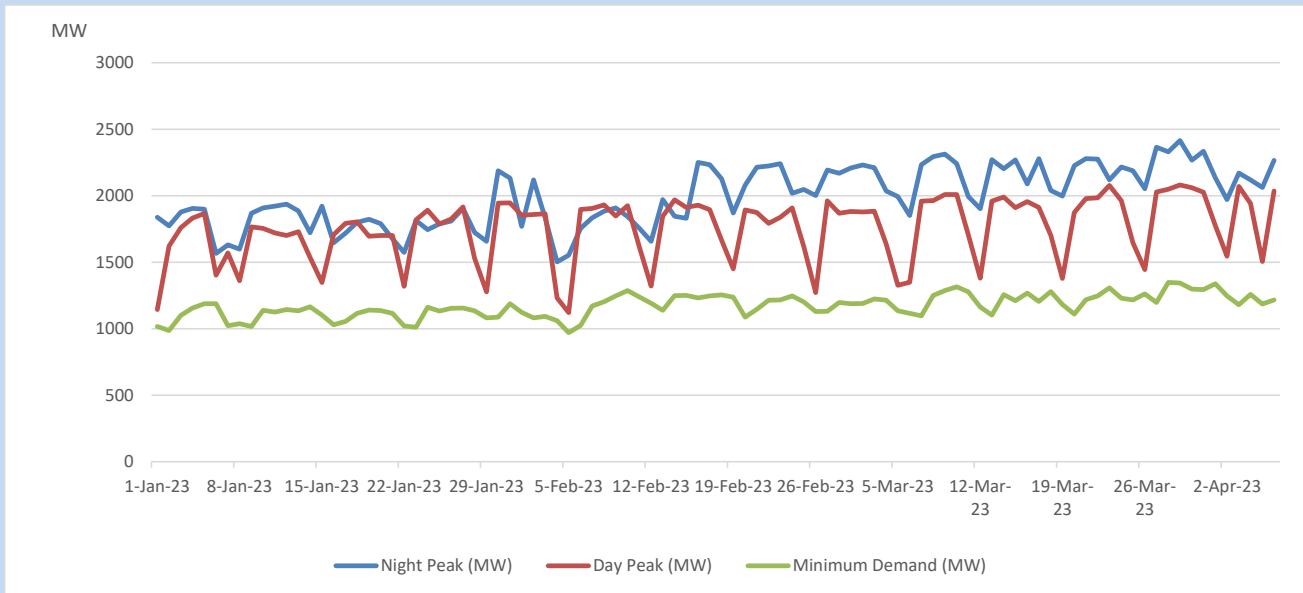
Comparison of Total Reservoir Storage Levels with Past Years



Variation of Major Hydro Reservoir Levels in the current year (GWh)



Variation of Demand during the current year

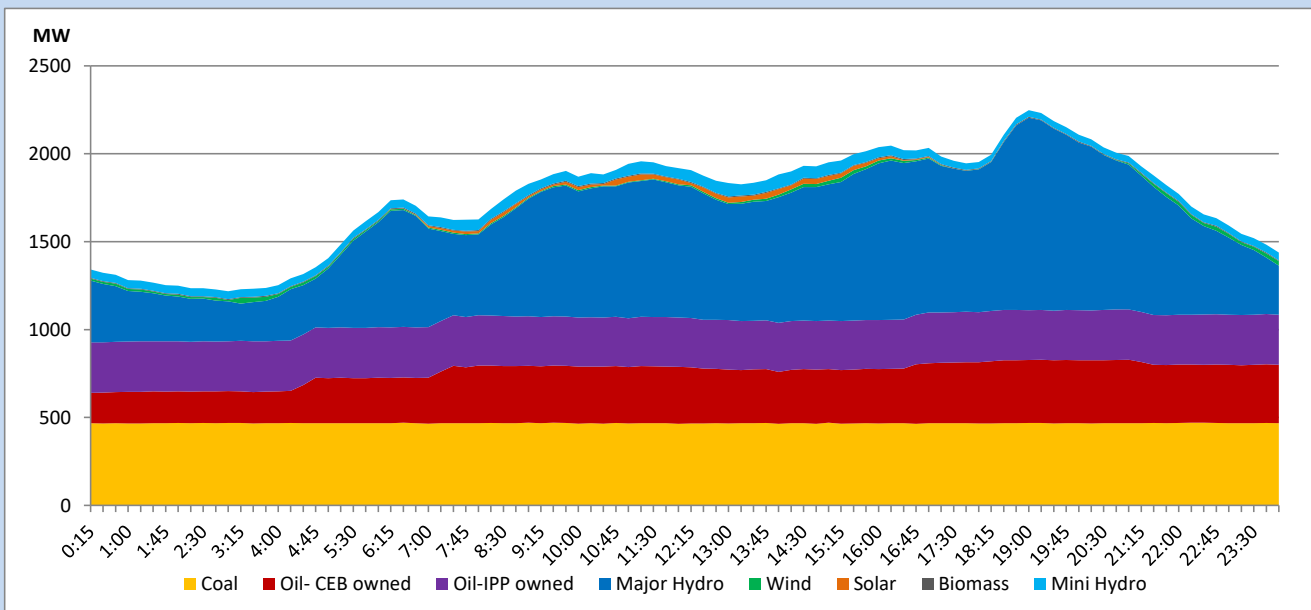


The above figures are excluding contribution from roof top solar, non telemetered solar and mini hydro plants

Daily Load Curve

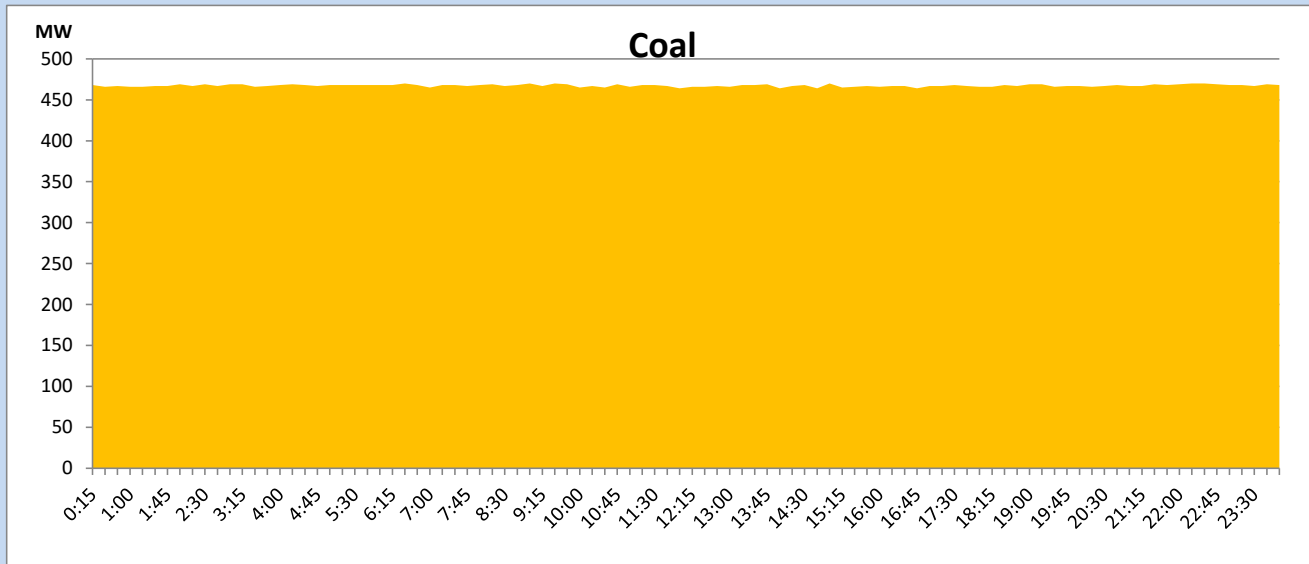
April 6, 2023

Solar and wind data is based on Telemetered Power Stations only



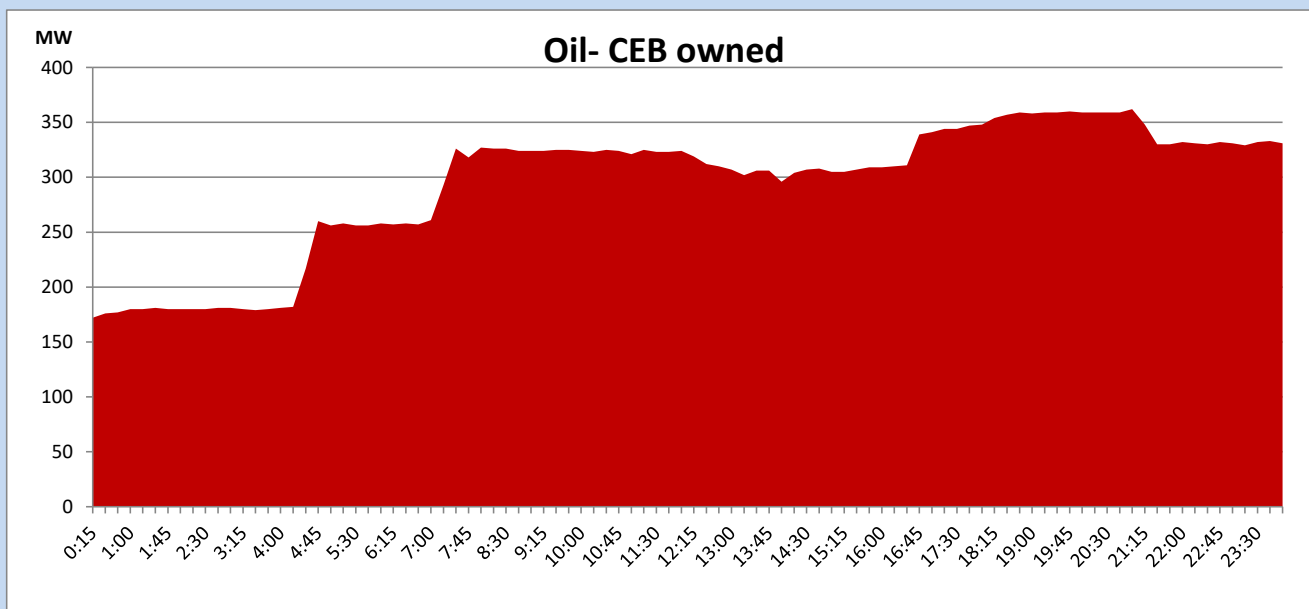
Coal Generation during

April 6, 2023



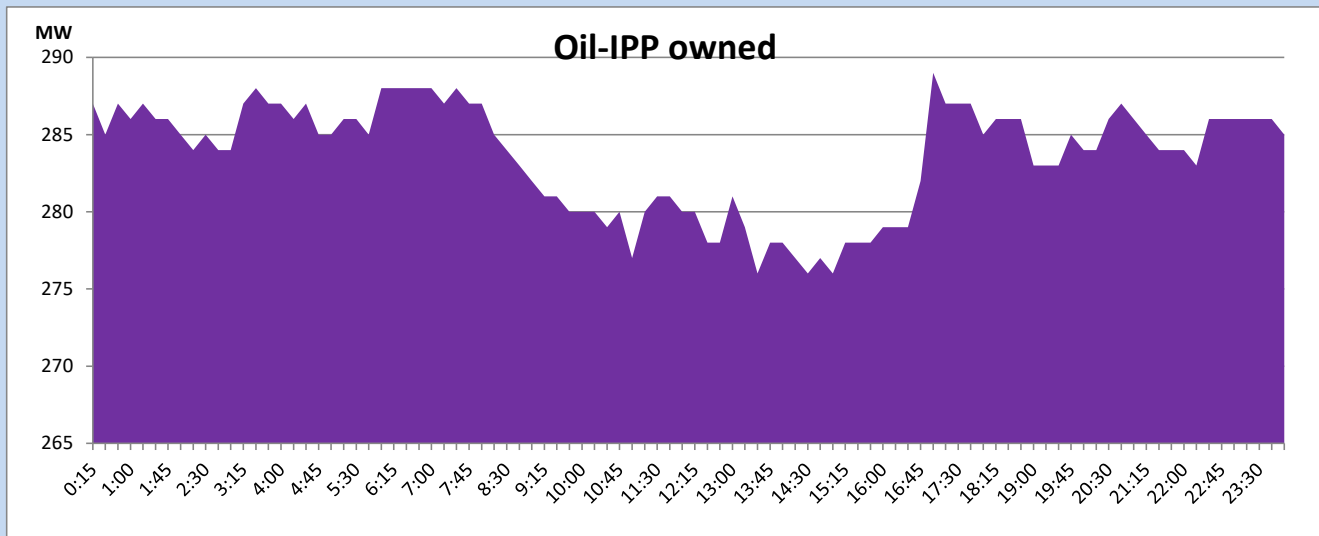
CEB Oil Plant Generation during

April 6, 2023



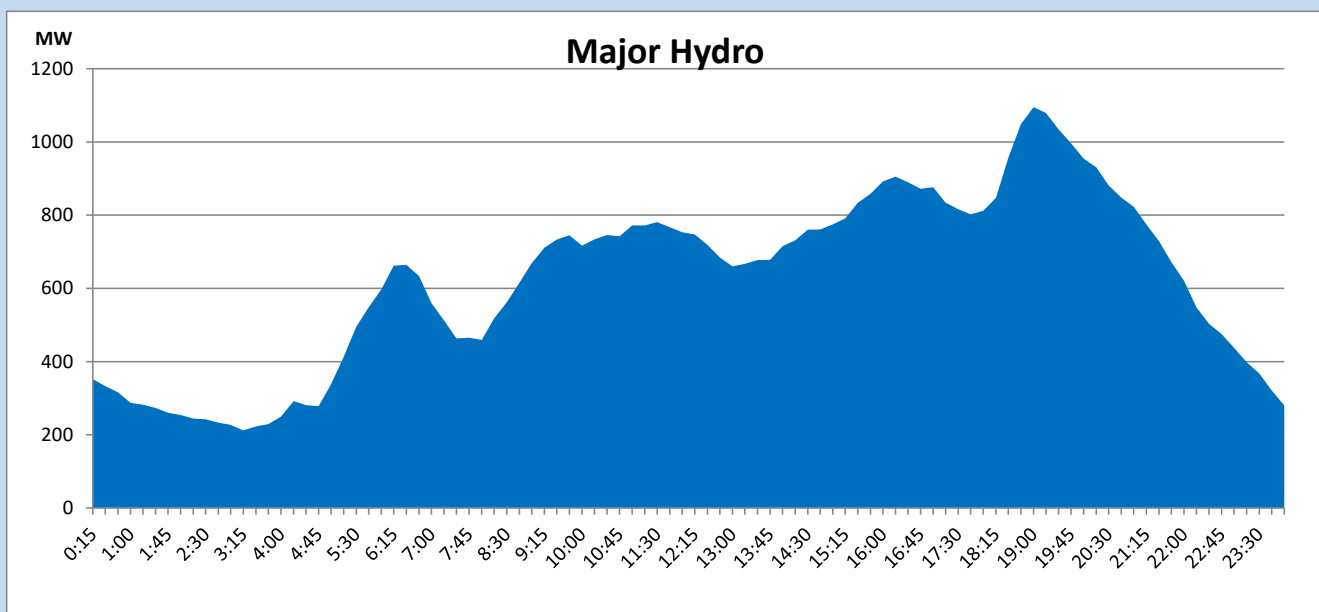
IPP Oil Plant Generation during

April 6, 2023



Major Hydro Generation during

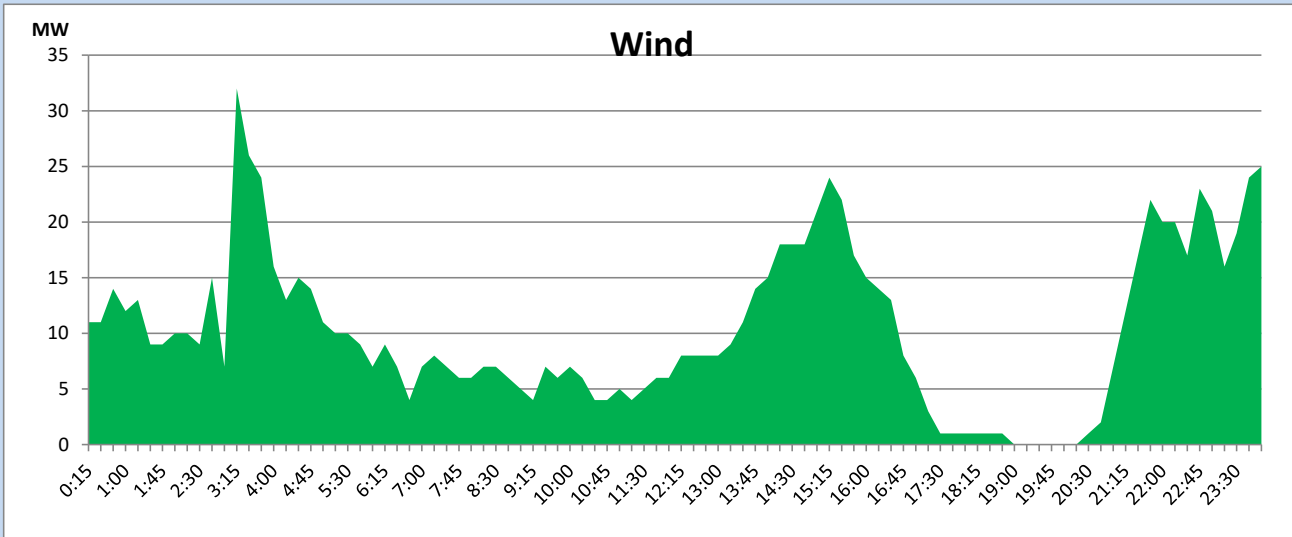
April 6, 2023



Wind Generation during

April 6, 2023

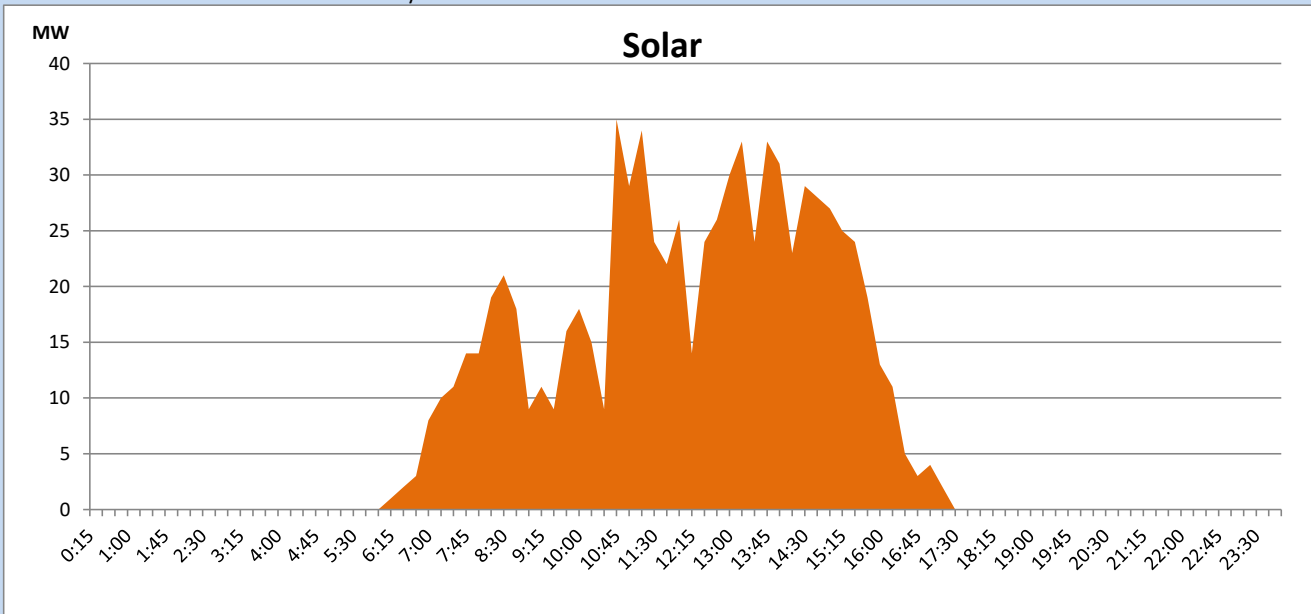
Based on Telemetered Power Stations only



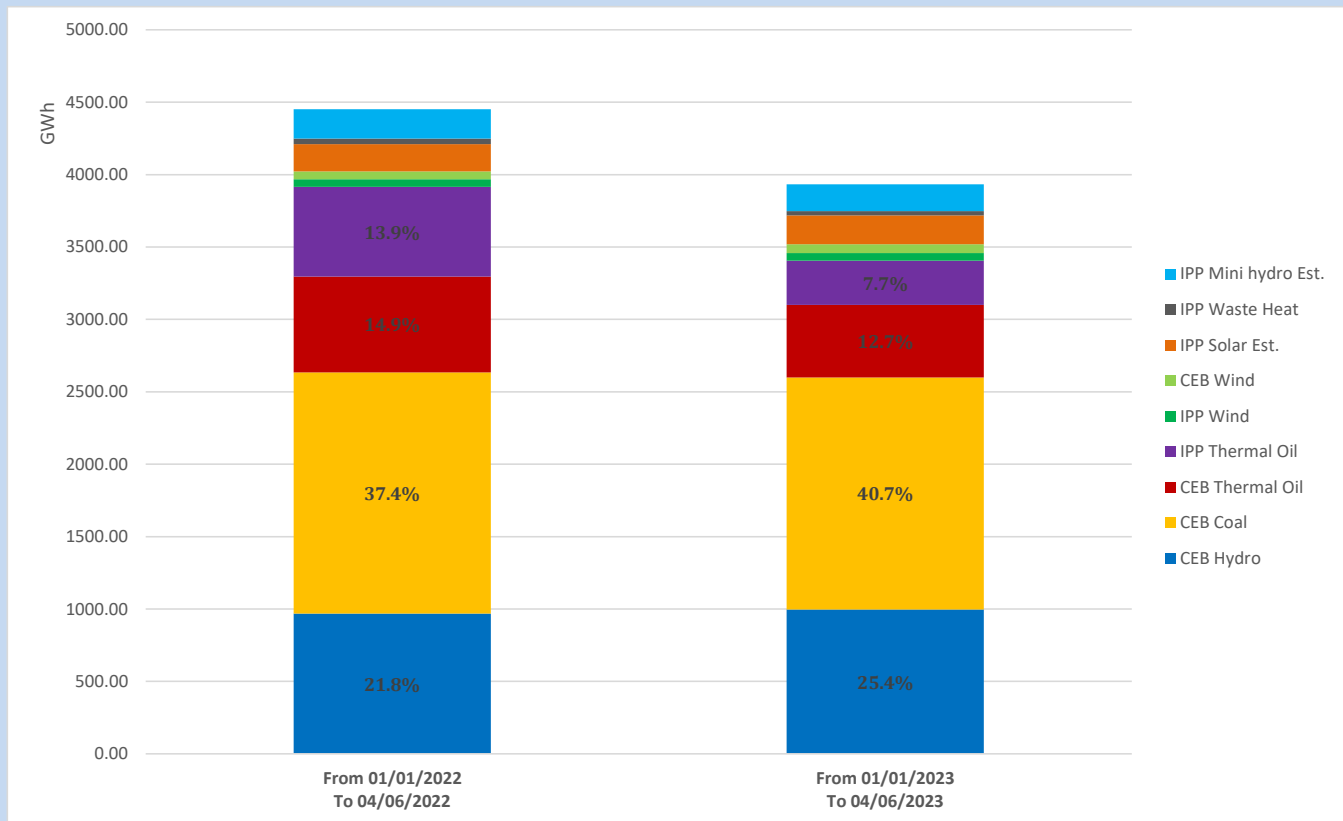
Solar Generation during

April 6, 2023

Based on Telemetered Power Stations only



Cumulative Dispatch Comparison with Last Year



The above figures are including contribution from roof top solar, non telemetered solar and mini hydro plants

Thermal Plant Fuel types

Power Station	Primary Fuel
CEB Thermal	
Sapugaskanda 1	Heavy Fuel
Sapugaskanda 2	Heavy Fuel
Kelanitissa Small Gas Turbines	Auto Diesel
GT 7 - Kelanitissa	Auto Diesel
Kelanitissa CCY	Naphtha or Diesel
Lakvijaya 1	Coal
Lakvijaya 2	Coal
Lakvijaya 3	Coal
Uthuru Janani	Heavy Fuel
Barge CEB	Heavy Fuel

Power Station	Primary Fuel
Private Thermal	
West Coast	Auto Diesel / Heavy Fuel

Major Incidents reported during the day

April 6, 2023

- 1) Sapugaskanda P/S Gen 2 made unavailable from 12:56hrs to 17:41hrs due to a repair in exhaust duct.