

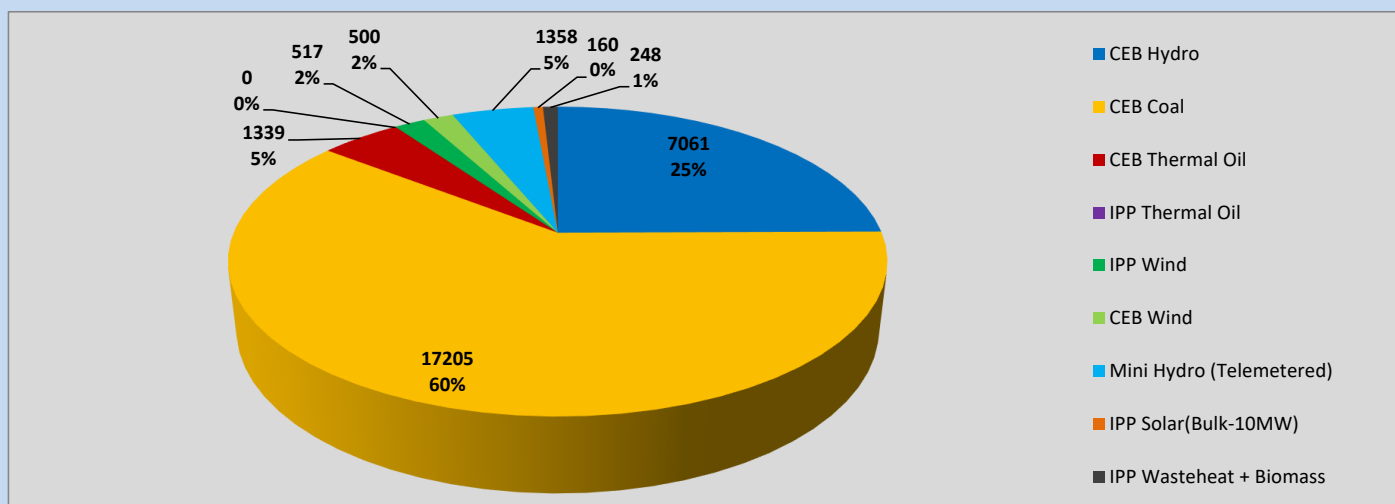
# Generation and Reservoirs Statistics

May 5, 2023



PUBLIC UTILITIES COMMISSION OF SRI LANKA

## Daily Generation Mix in MWh



Total Generation (Excluding estimated figures) =

28,388 MWh

### Estimated figures of CEB generation report

Estimated unserved energy = 0.00 GWh

Estimated Mini Hydro (Non telemetered) = 2632 MWh

Estimated IPP Solar PV (Bulk 1-10MW) = 304 MWh

Estimated Solar Roof Top PV = 1920 MWh

## Cumulative Dispatch

Following data excludes the contribution from roof top solar, non telemetered solar and mini hydro plants

### For Current Month

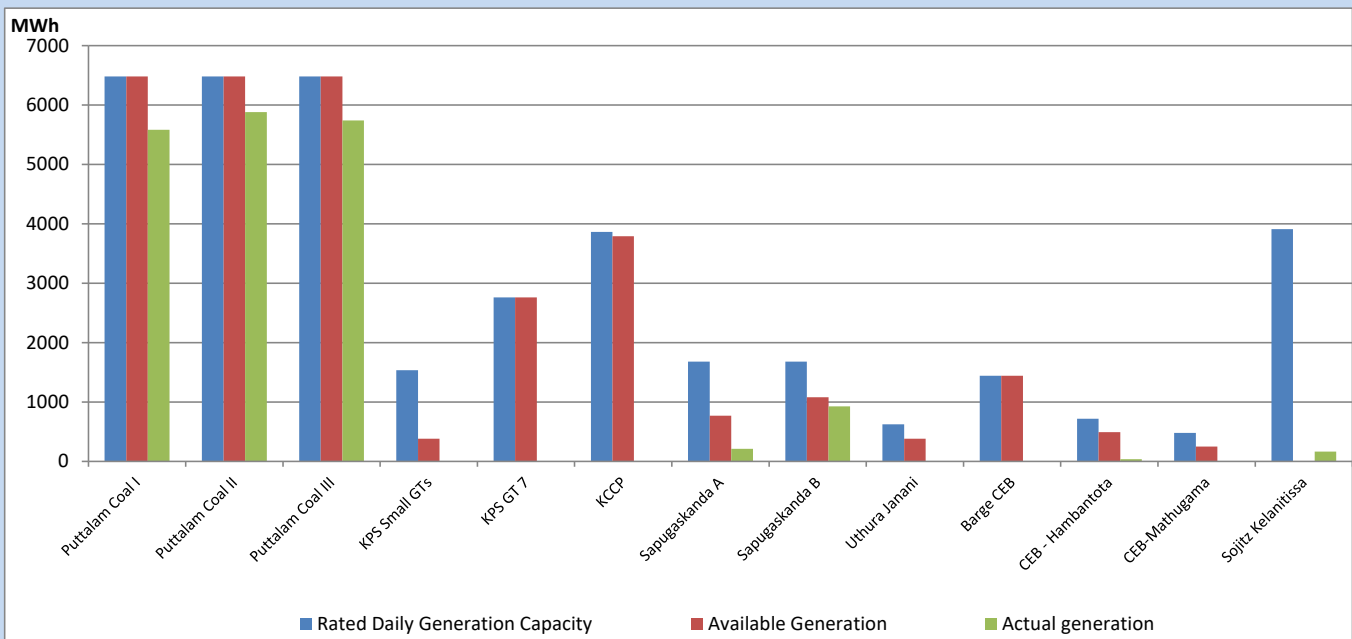
Category	Dispatch (GWh)	
CEB Hydro	36	20.43%
CEB Coal	93	53.42%
CEB Thermal Oil	20	11.49%
IPP Thermal	14	7.75%
SPP Wind	2	1.12%
CEB Wind	2	1.08%
Mini Hydro (Telemetered)	6	3.28%
IPP Solar (Bulk-10MW)	1	0.71%
IPP Wasteheat + BMP	1	0.73%
<b>Total</b>	<b>174</b>	

### For Current Year

Category	Dispatch (GWh)	
CEB Hydro	1,237	26.16%
CEB Coal	2,080	43.99%
CEB Thermal Oil	675	14.28%
IPP Thermal	431	9.12%
SPP Wind	60	1.27%
CEB Wind	72	1.52%
Mini Hydro (Telemetered)	101	2.14%
IPP Solar (Bulk-10MW)	36	0.76%
IPP Wasteheat	36	0.76%
<b>Total</b>	<b>4,728</b>	

## CEB owned Thermal Plant Dispatch

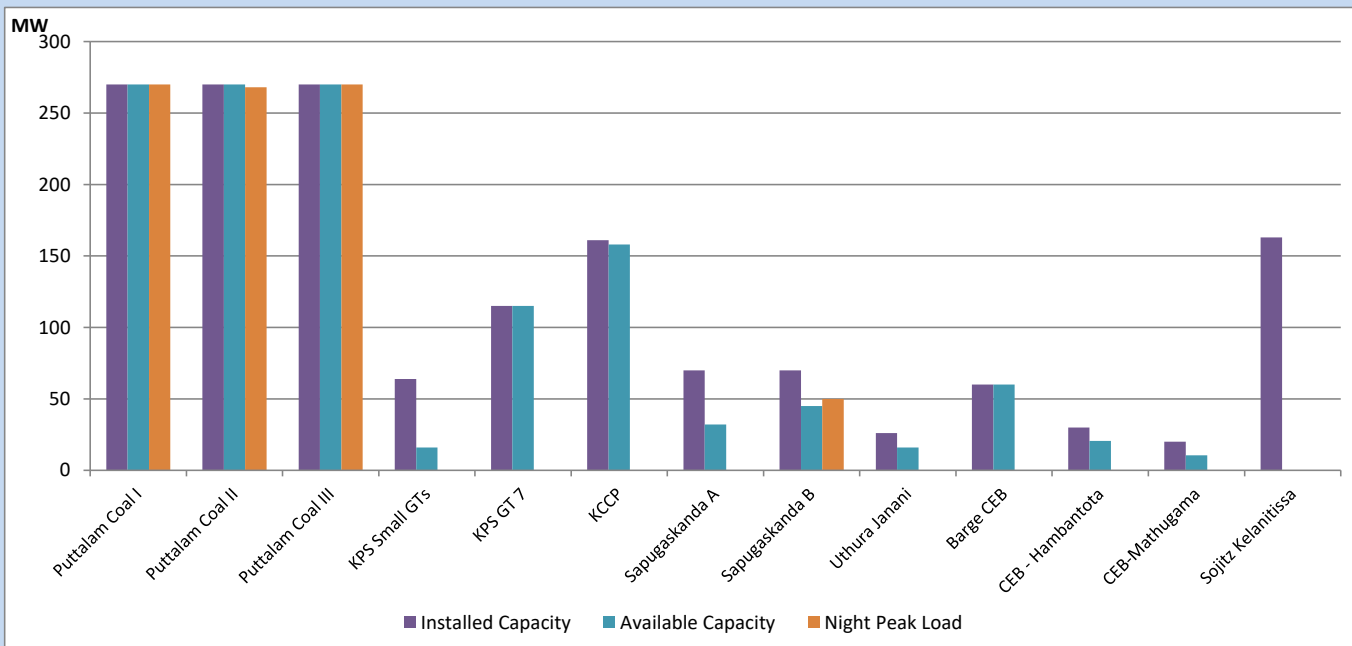
May 5, 2023



Available Generation is estimated based on plant availability at 6.00am on

May 6, 2023

## CEB owned Thermal Plant Loading at the Night Peak



**Note-**

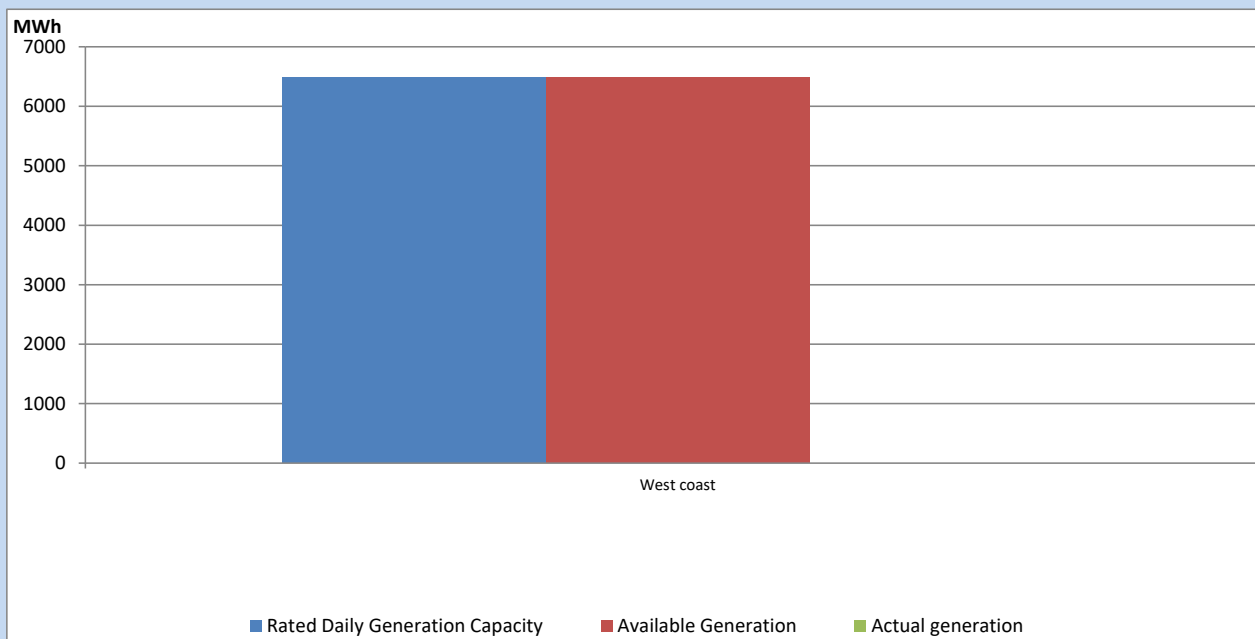
Plant availability is recorded at 6.00 am on

May 6, 2023

Sojitz Kelanitissa Plant is under Testing & Commissioning following to plant transfer procedure to CEB

## IPP owned Thermal Plant Dispatch

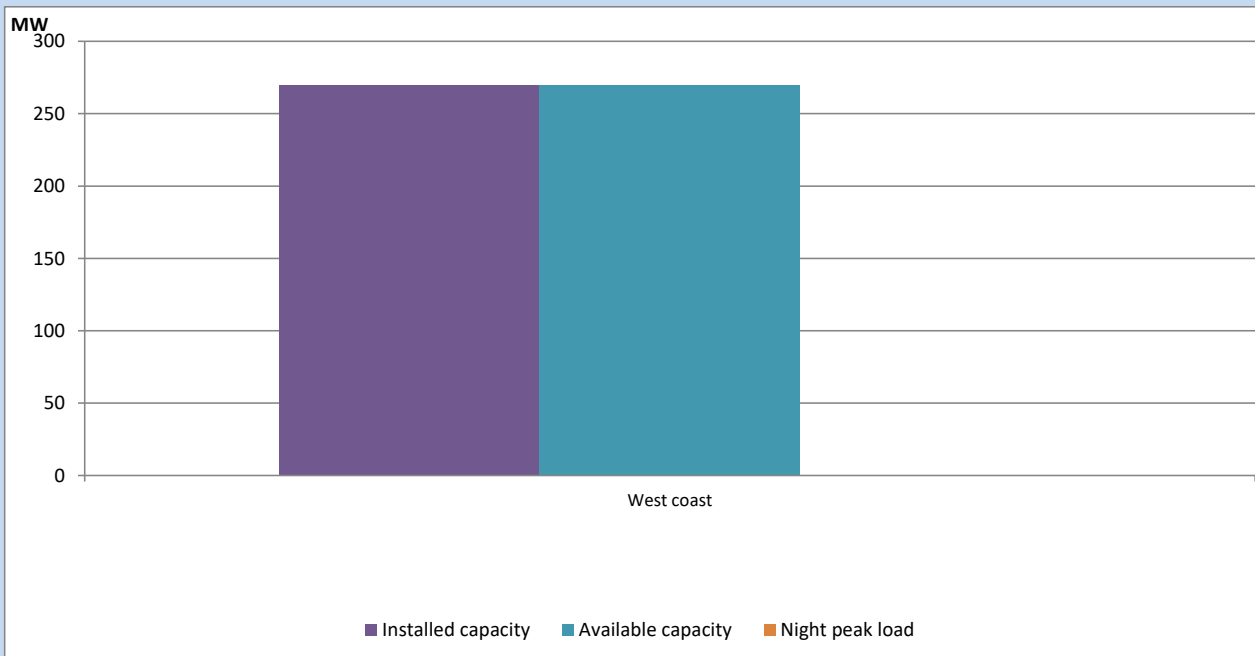
May 5, 2023



Available Generation is estimated based on plant availability at 6.00am on

May 6, 2023

## IPP owned Thermal Plant Loading at the Night Peak

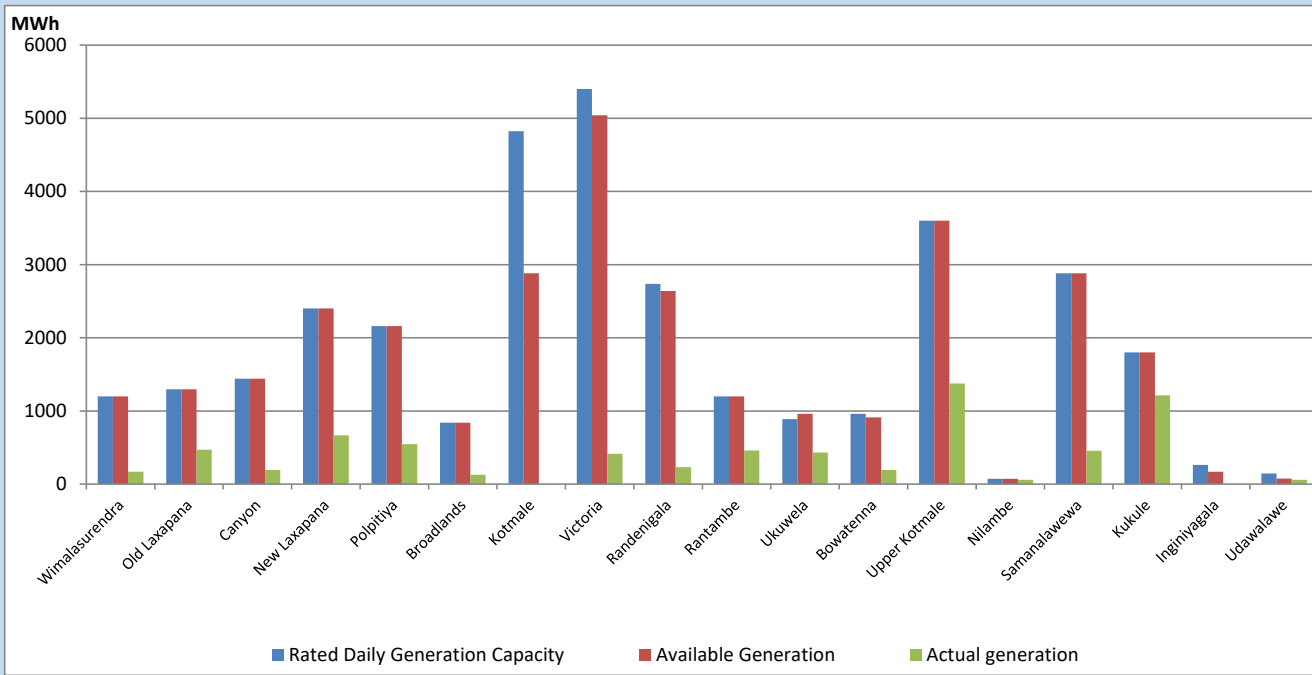


Note- Plant availability is recorded at 6.00 am on

May 6, 2023

## Major Hydro Plant Dispatch

May 5, 2023

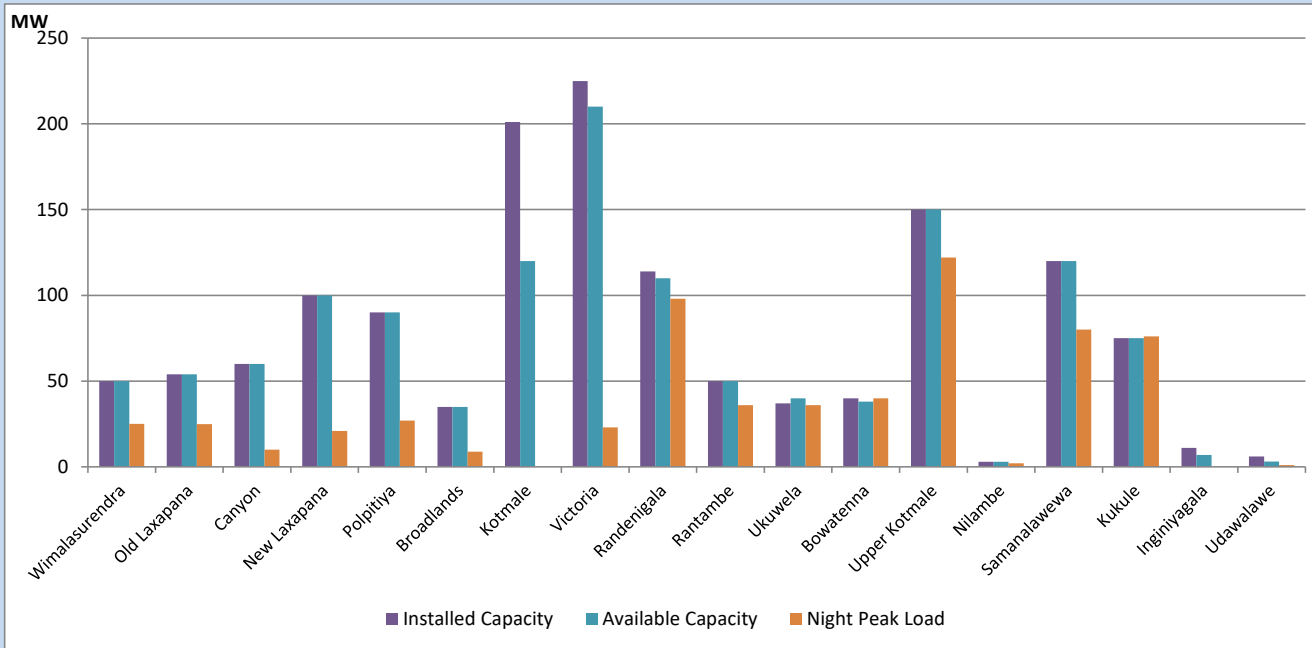


Available Generation is estimated based on plant availability at 6.00am on  
Broadlands power plant is operating in the Commissioning Stage

May 6, 2023

## Major Hydro Plant Loading at Night Peak

May 5, 2023



Note- Plant availability is recorded at 6.00 am on  
Broadlands power plant is operating in the Commissioning Stage

May 6, 2023

## Summary of Major Plant performance

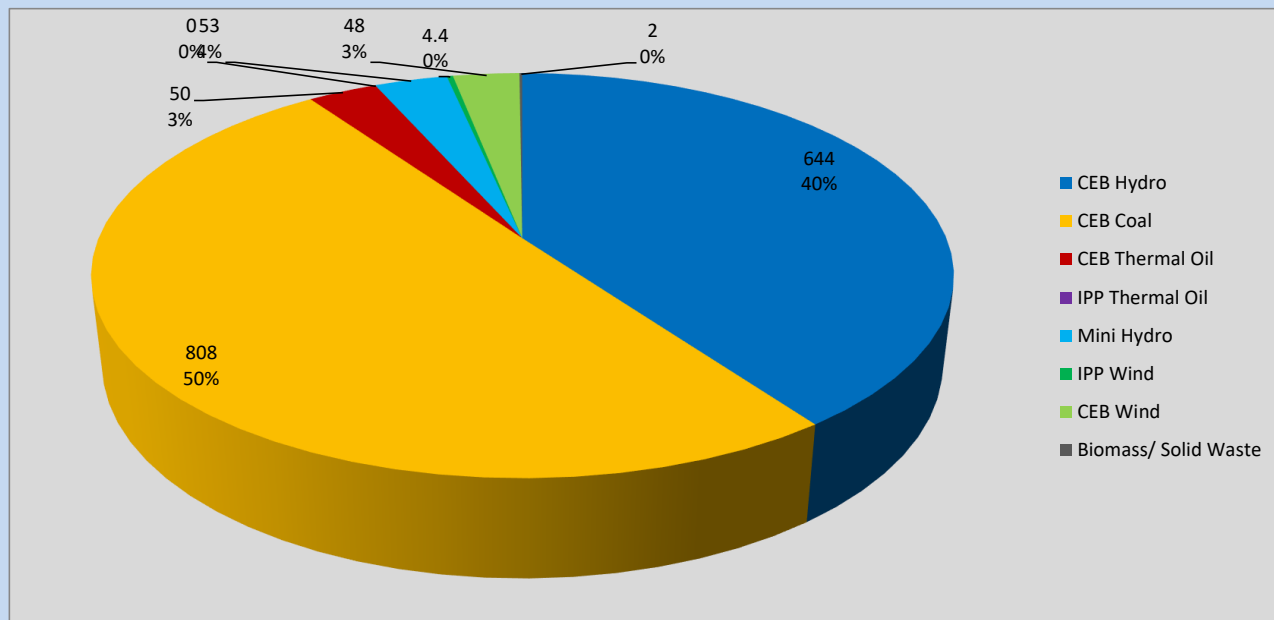
Plant	Installed Capacity	Plant Availability	Night peak Load	Plant Dispatch
	(MW)	(MW)	(MW)	(MWh)
Wimalasurendra	50	50	25	169
Old Laxapana	54	54	25	469
Canyon	60	60	10	192
New Laxapana	100	100	21	666
Polpitiya	90	90	27	546
Broadlands	35	35	9	129
Kotmale	201	120	0	0
Victoria	225	210	23	413
Randenigala	114	110	98	231
Rantambe	50	50	36	458
Ukuwela	37	40	36	433
Bowatenna	40	38	40	194
Upper Kotmale	150	150	122	1,374
Nilambe	3	3	2	60
Samanalawewa	120	120	80	457
Kukule	75	75	76	1,211
Inginiyagala	11	7	0	0
Udawalawe	6	3	1	59
Puttalam Coal I	270	270	270	5,584
Puttalam Coal II	270	270	268	5,882
Puttalam Coal III	270	270	270	5,739
KPS Small GTs	64	16	0	0
KPS GT 7	115	115	0	0
KCCP	161	158	0	0
Sapugaskanda A	70	32	0	213
Sapugaskanda B	70	45	50	927
Uthura Janani	26	16	0	0
Barge CEB	60	60	0	0
CEB-Hambantota	30	21	0	36
CEB-Mathugama	20	11	0	0
ACE Matara	24	0	0	0
Asia Power	50	0	0	0
Sojitz Kelanitissa	163	0	0	163
West Coast	270	270	0	0
Nothern Power	36	0	0	0
ACE Embilipitiya	93	0	0	0
<b>Total</b>	<b>3,483</b>	<b>2,868</b>	<b>1,596</b>	<b>28,388</b>

Plant availability is the availability recorded at 6 am on

May 6, 2023

## Contribution to the Night Peak in MW

May 5, 2023

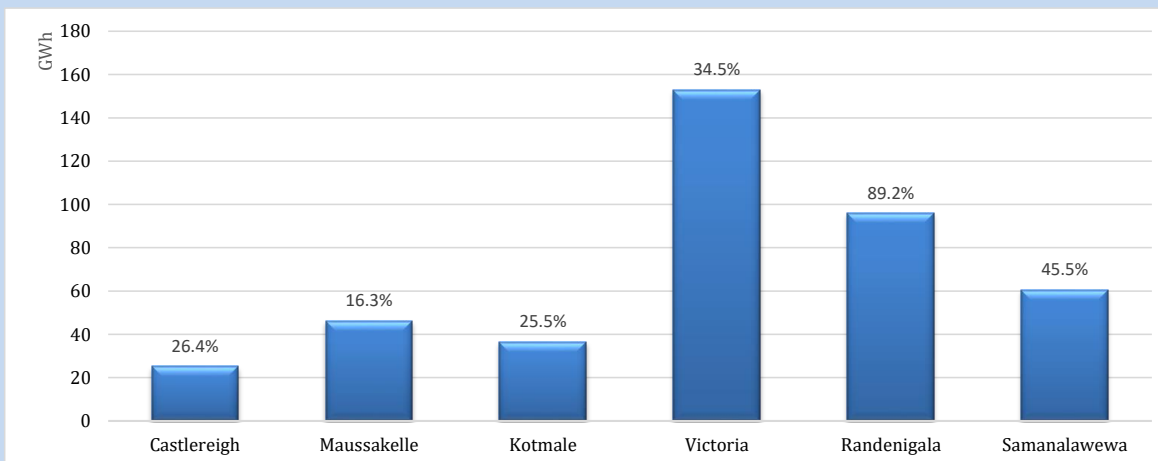


Night Peak*	1,609 MW
Day Peak	1,095 MW
Minimum Demand	926 MW

Above figures are excluding contribution from roof top solar, non telemetered solar and mini hydro plants

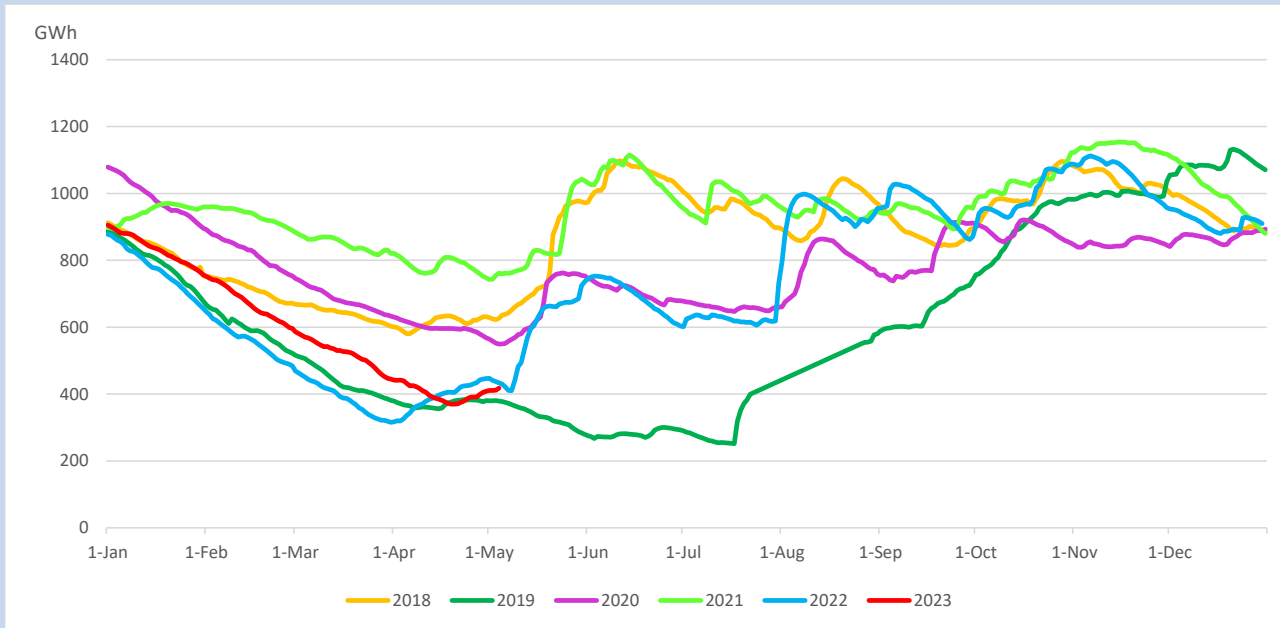
## Reservoir Levels -

as at 06.00 Hr on May 6, 2023

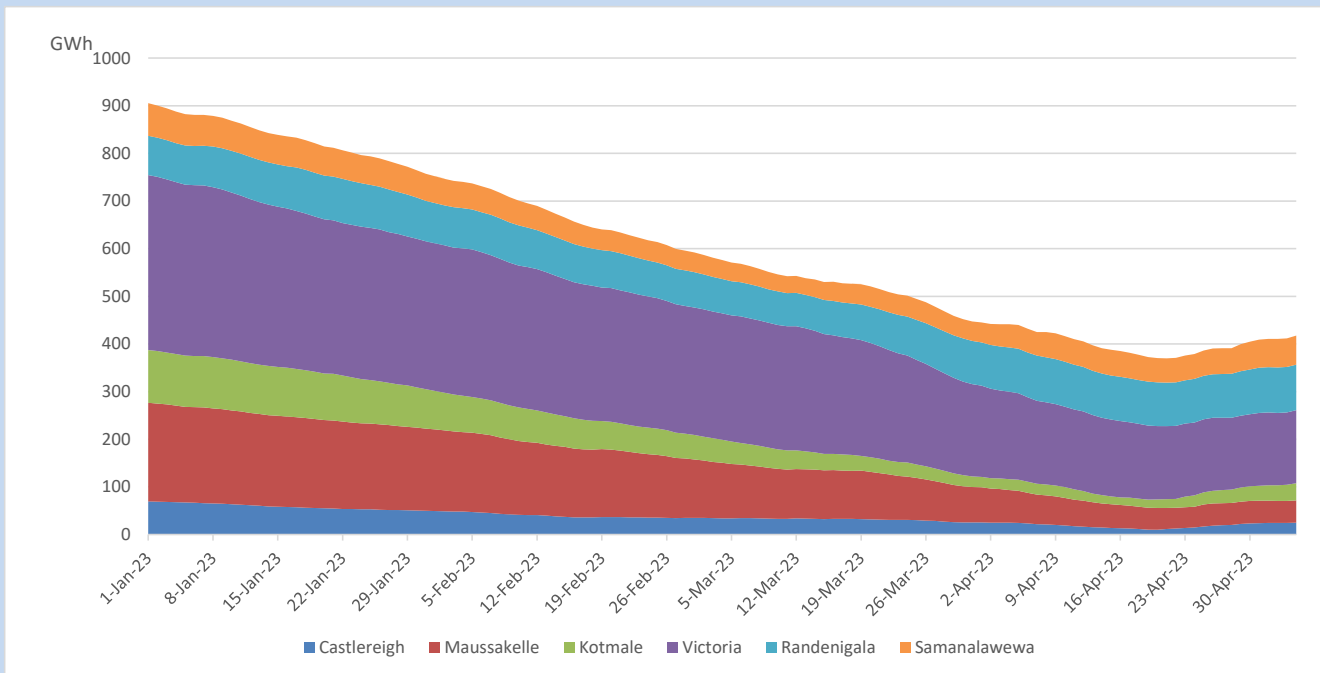


Total Reservoir Level	417.3 GWh
% of Total capacity	34.6%

## Comparison of Total Reservoir Storage Levels with Past Years

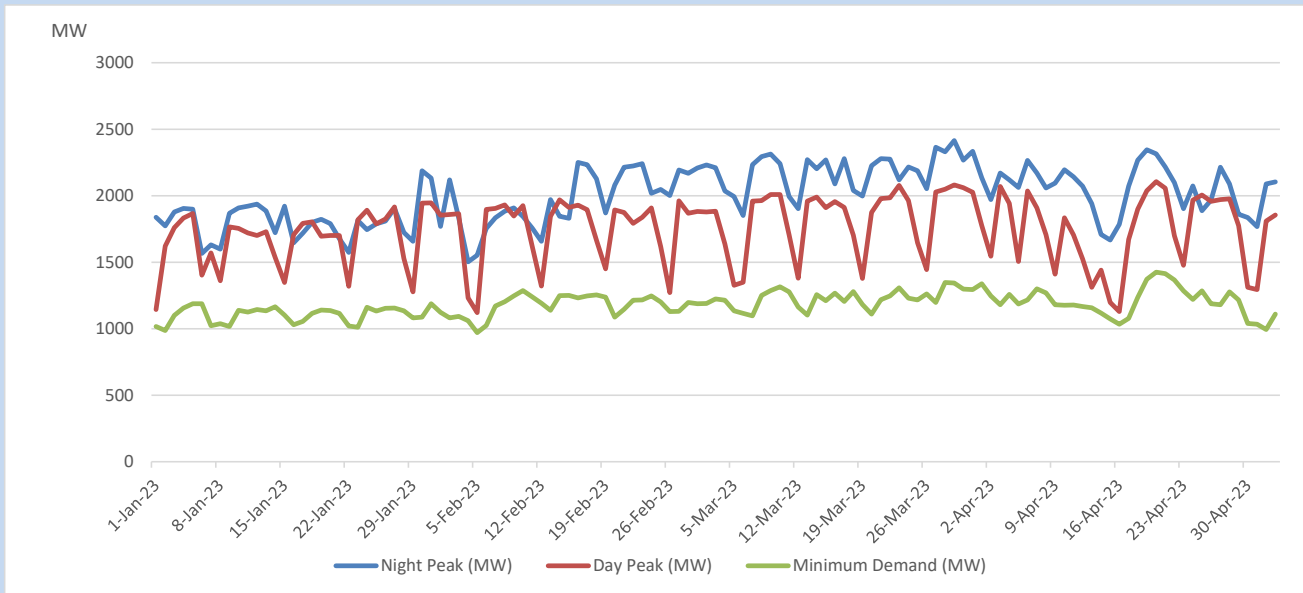


## Variation of Major Hydro Reservoir Levels in the current year (GWh)





## Variation of Demand during the current year

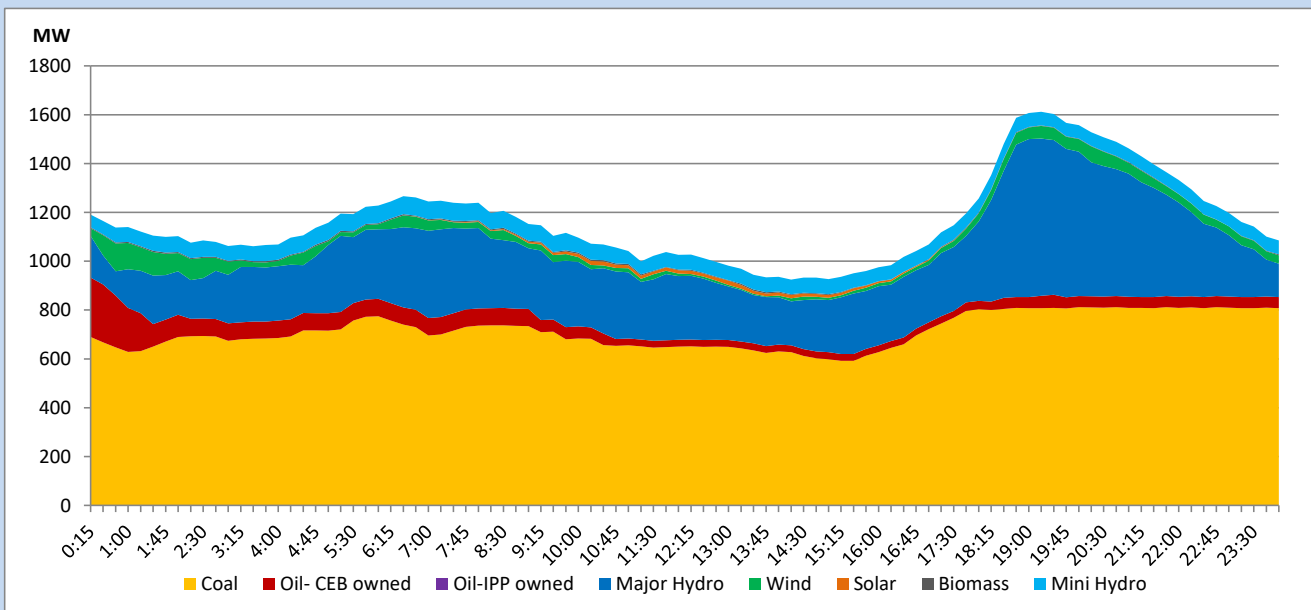


The above figures are excluding contribution from roof top solar, non telemetered solar and mini hydro plants

## Daily Load Curve

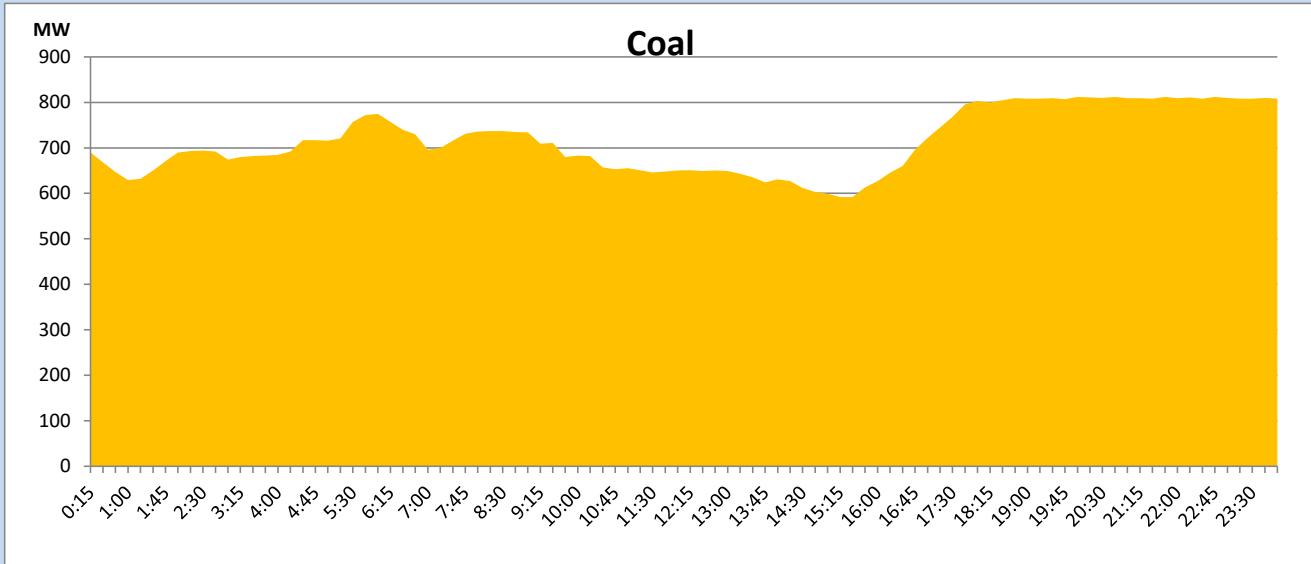
May 5, 2023

Solar and wind data is based on Telemetered Power Stations only



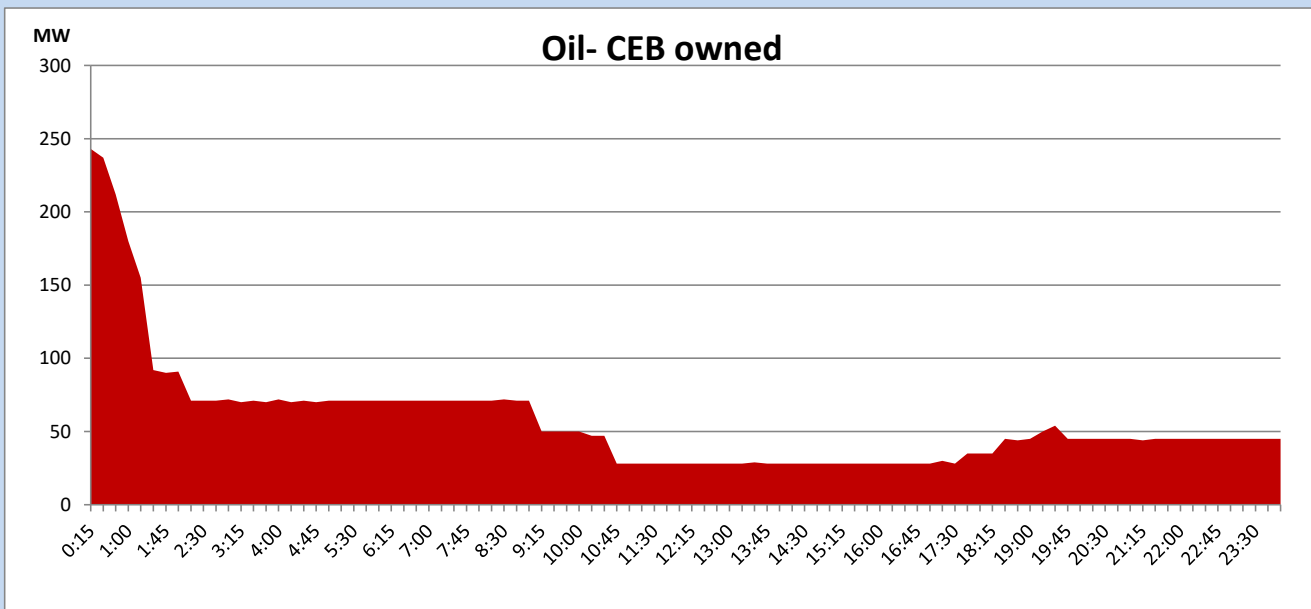
## Coal Generation during

May 5, 2023



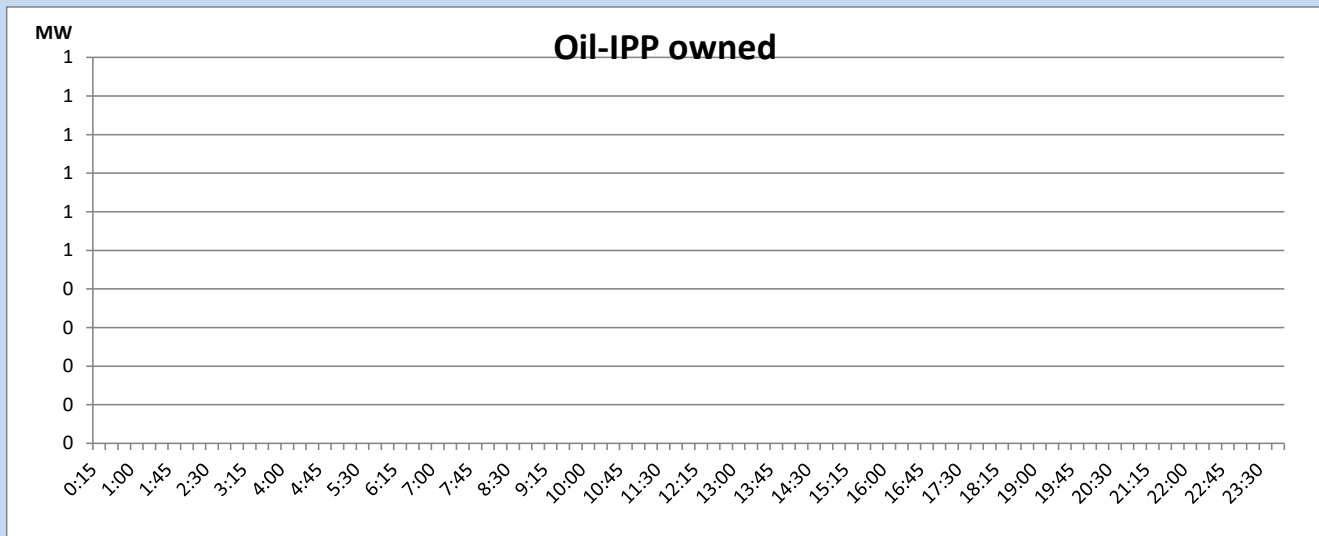
## CEB Oil Plant Generation during

May 5, 2023



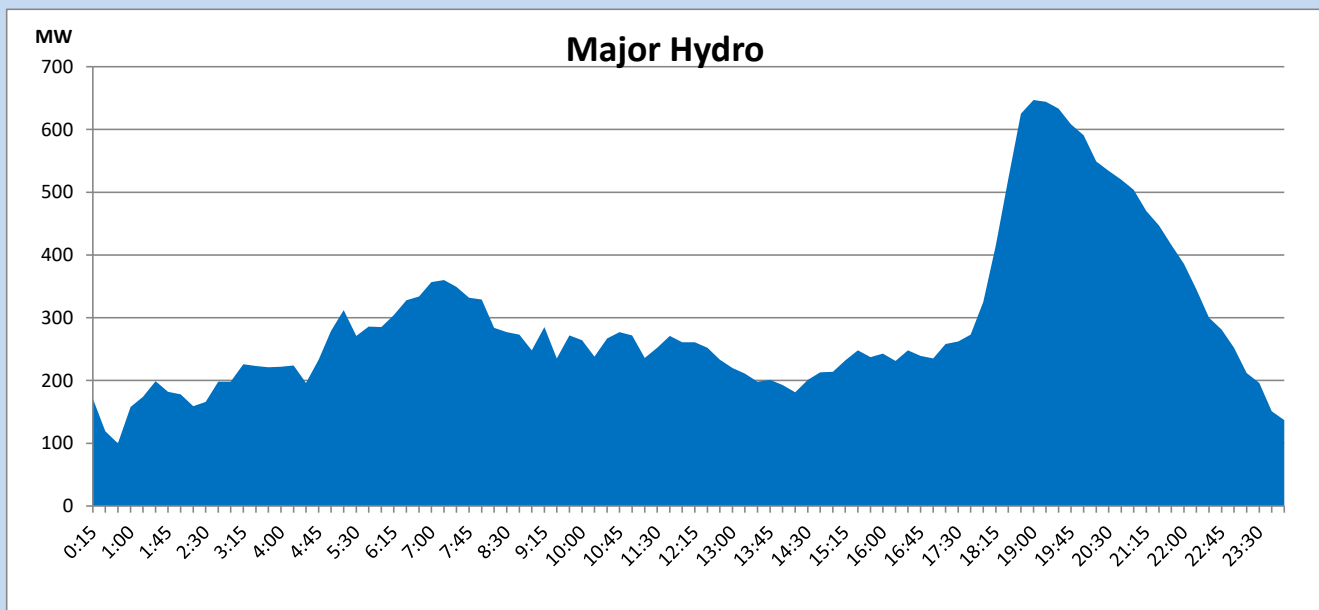
## IPP Oil Plant Generation during

May 5, 2023



## Major Hydro Generation during

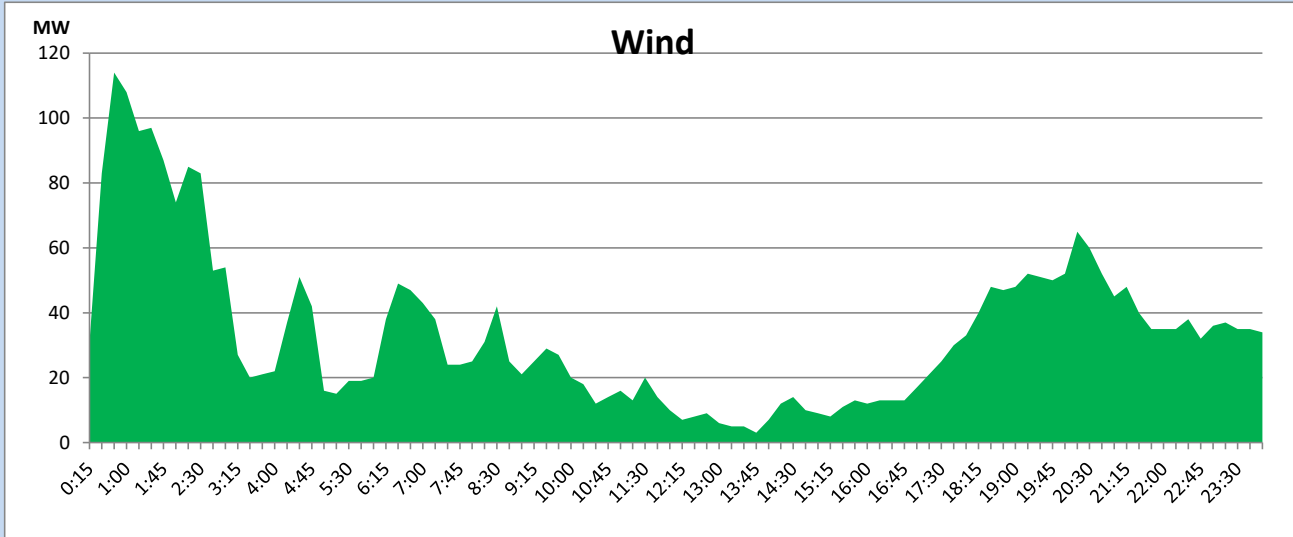
May 5, 2023



## Wind Generation during

May 5, 2023

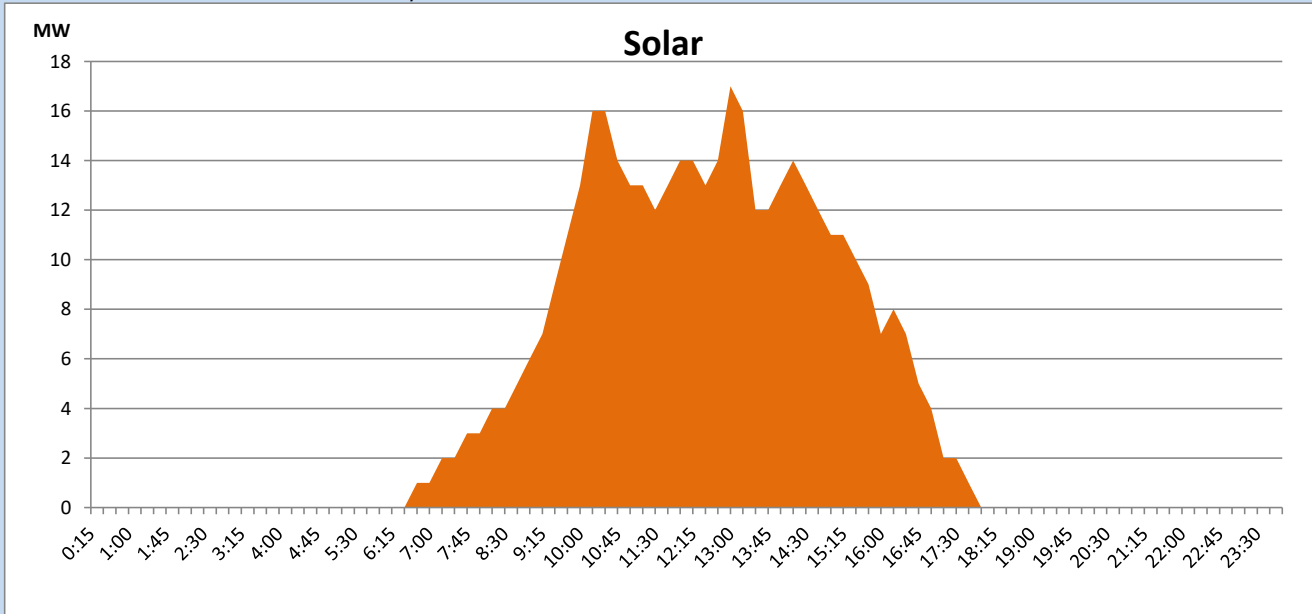
Based on Telemetered Power Stations only



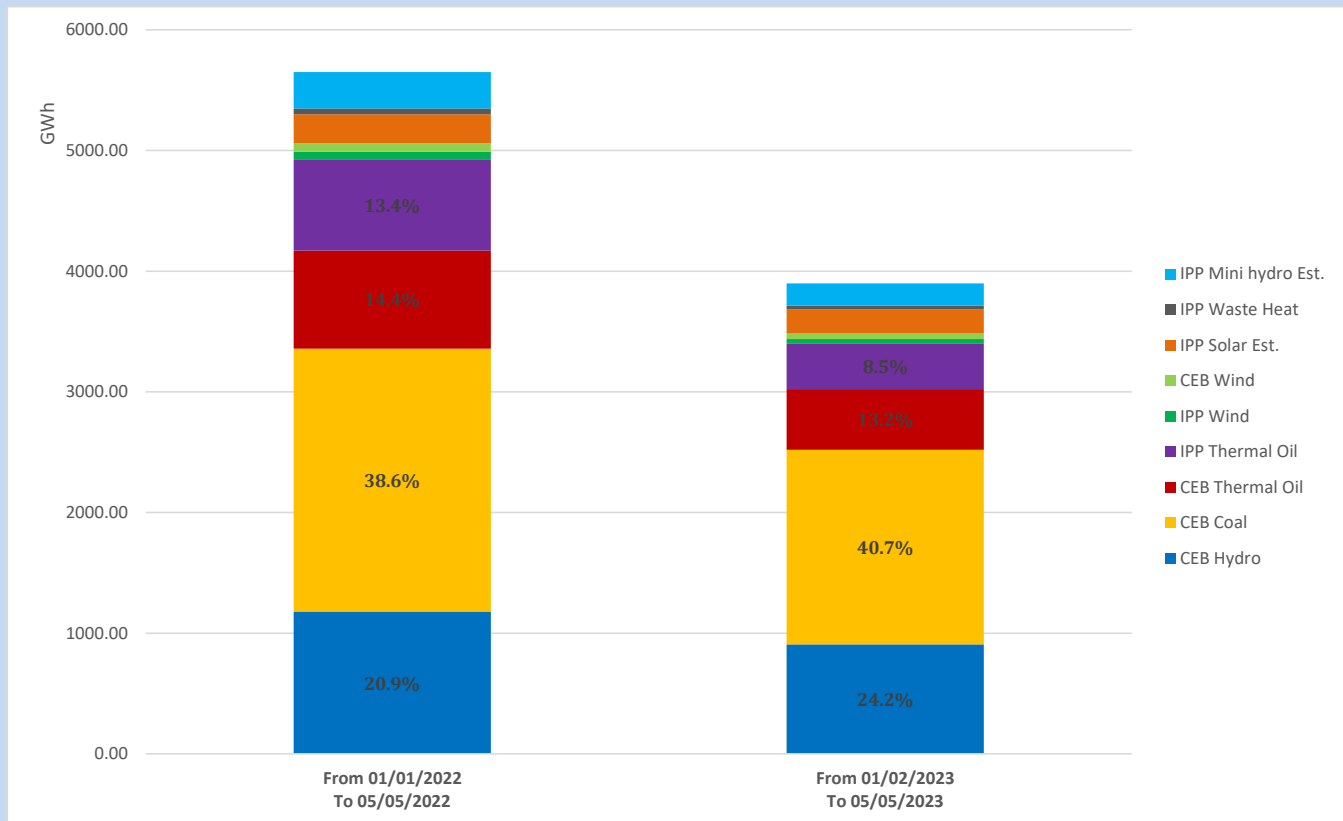
## Solar Generation during

May 5, 2023

Based on Telemetered Power Stations only



## Cumulative Dispatch Comparison with Last Year



The above figures are including contribution from roof top solar, non telemetered solar and mini hydro plants

## Thermal Plant Fuel types

Power Station	Primary Fuel
CEB Thermal	
Sapugaskanda 1	Heavy Fuel
Sapugaskanda 2	Heavy Fuel
Kelanitissa Small Gas Turbines	Auto Diesel
GT 7 - Kelanitissa	Auto Diesel
Kelanitissa CCY	Naphtha or Diesel
Lakvijaya 1	Coal
Lakvijaya 2	Coal
Lakvijaya 3	Coal
Uthuru Janani	Heavy Fuel
Barge CEB	Heavy Fuel

Power Station	Primary Fuel
Private Thermal	
West Coast	Auto Diesel / Heavy Fuel

## Major Incidents reported during the day

May 5, 2023

- 1) KCCPS2 GT and ST were synchronized at 6:40hrs and 22:13hrs (04.05.2023) respectively for testing purposes and reached 152MW at 00:00 hrs. KCCP2 made forced shutdown at 01:27hrs.
- 2) Rantembe Unit 2 tripped at 4:12hrs due to high upper guide bearing temperature and made available at 06:00hrs.
- 3) Mannar-Nadukuda Cct-01 manually switched off at 09:01hrs form both ends due to VT failure at Mannar end. Mannar-Nadukuda Cct-01 yet to be normalized.
- 4) Kotugoda-Biyagma Cct-02 normalized at 09:47hrs.
- 5) Hambanthota 132/33kV T/F 01 tripped at 20:50hrs due to the operation of differential protection and yet to restore.
- 6) Naula 132/33kV T/F 01 (tripped on 04/05/2023 ) normalized at 16:46hrs.