

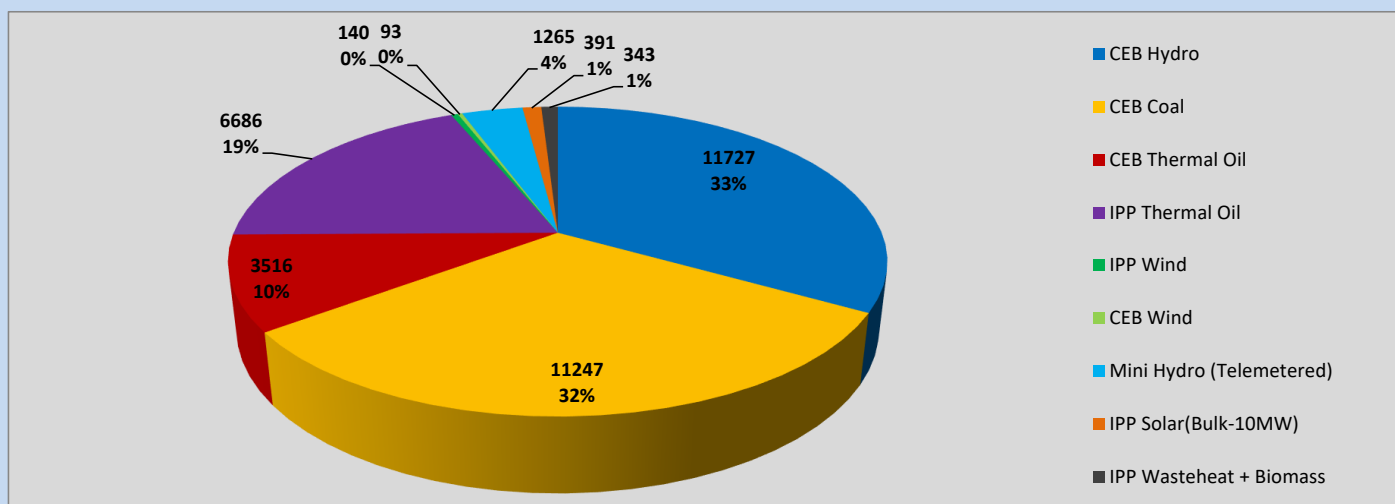
# Generation and Reservoirs Statistics

April 5, 2023



PUBLIC UTILITIES COMMISSION OF SRI LANKA

## Daily Generation Mix in MWh



Total Generation (Excluding estimated figures) =

35,408 MWh

### Estimated figures of CEB generation report

Estimated unserved energy = 0.00 GWh

Estimated Mini Hydro (Non telemetered) = 1115 MWh

Estimated IPP Solar PV (Bulk 1-10MW) = 304 MWh

Estimated Solar Roof Top PV = 1640 MWh

## Cumulative Dispatch

Following data excludes the contribution from roof top solar, non telemetered solar and mini hydro plants

### For Current Month

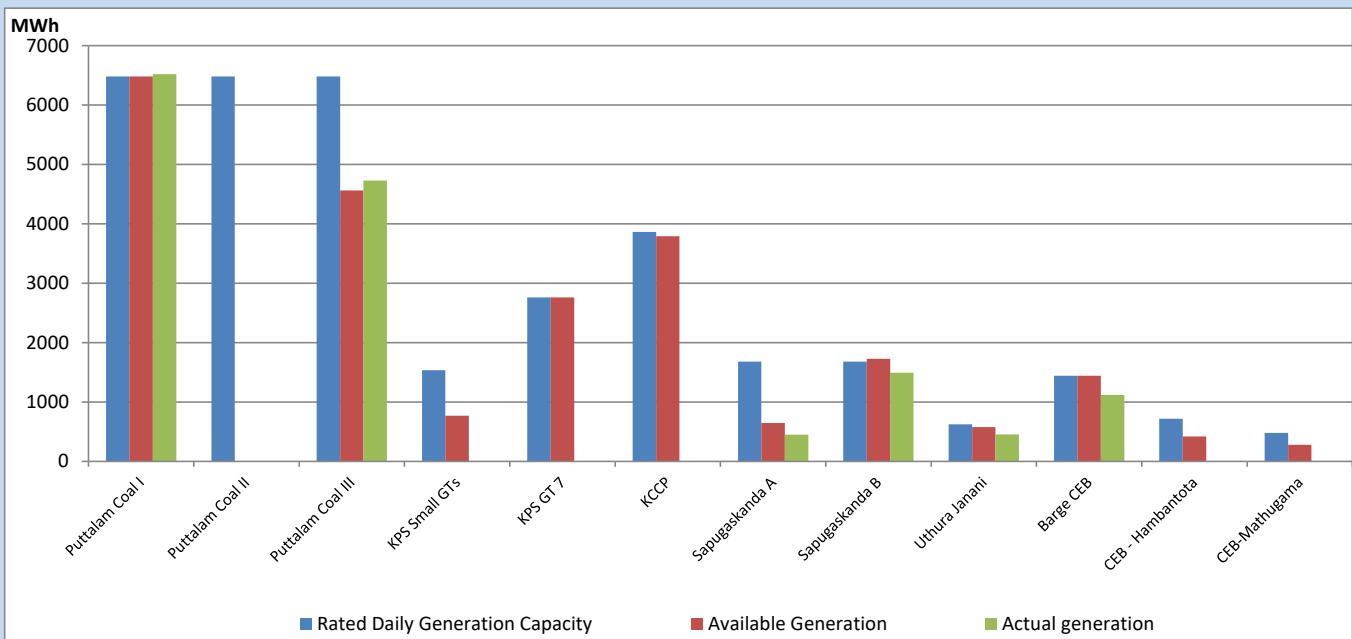
Category	Dispatch (GWh)	
CEB Hydro	61	31.71%
CEB Coal	68	35.51%
CEB Thermal Oil	24	12.44%
IPP Thermal	28	14.45%
SPP Wind	1	0.64%
CEB Wind	2	0.86%
Mini Hydro (Telemetered)	5	2.62%
IPP Solar(Bulk-10MW)	2	0.95%
IPP Wasteheat + BMP	2	0.81%
<b>Total</b>	<b>193</b>	

### For Current Year

Category	Dispatch (GWh)	
CEB Hydro	982	27.22%
CEB Coal	1,591	44.09%
CEB Thermal Oil	494	13.69%
IPP Thermal	298	8.26%
SPP Wind	52	1.44%
CEB Wind	62	1.72%
Mini Hydro (Telemetered)	74	2.05%
IPP Solar(Bulk-10MW)	28	0.76%
IPP Wasteheat	28	0.77%
<b>Total</b>	<b>3,609</b>	

## CEB owned Thermal Plant Dispatch

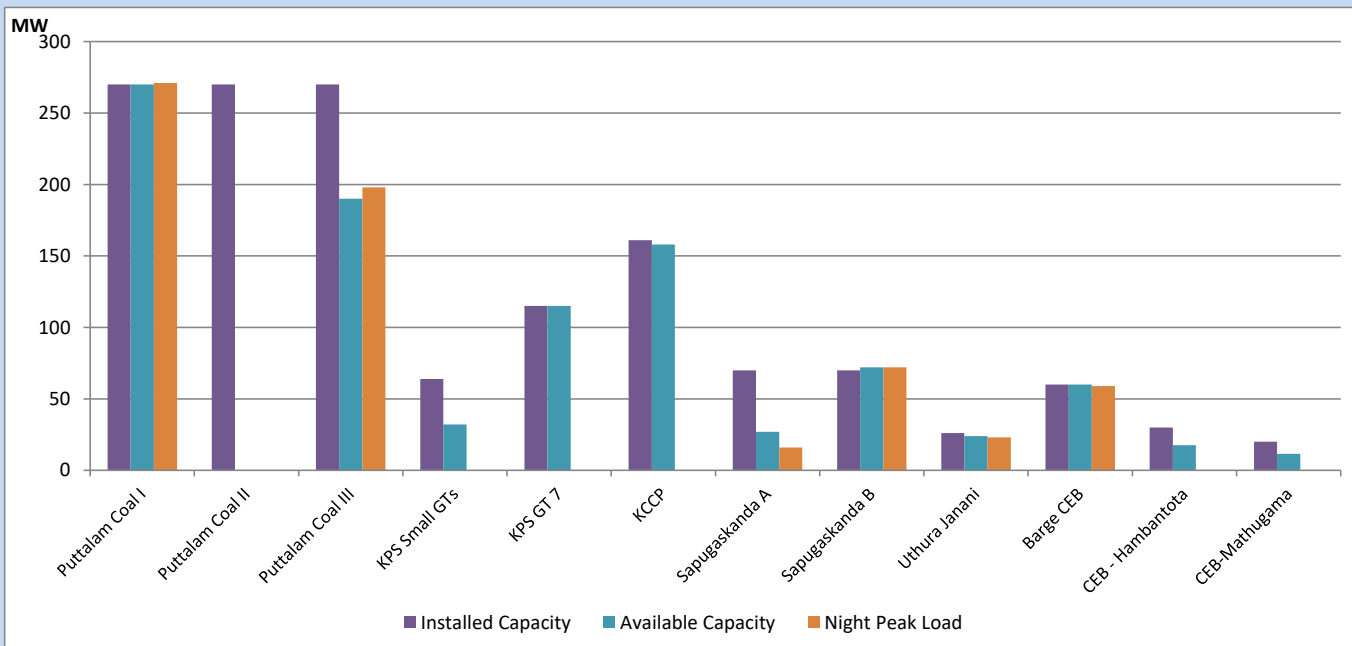
April 5, 2023



Available Generation is estimated based on plant availability at 6.00am on

April 6, 2023

## CEB owned Thermal Plant Loading at the Night Peak

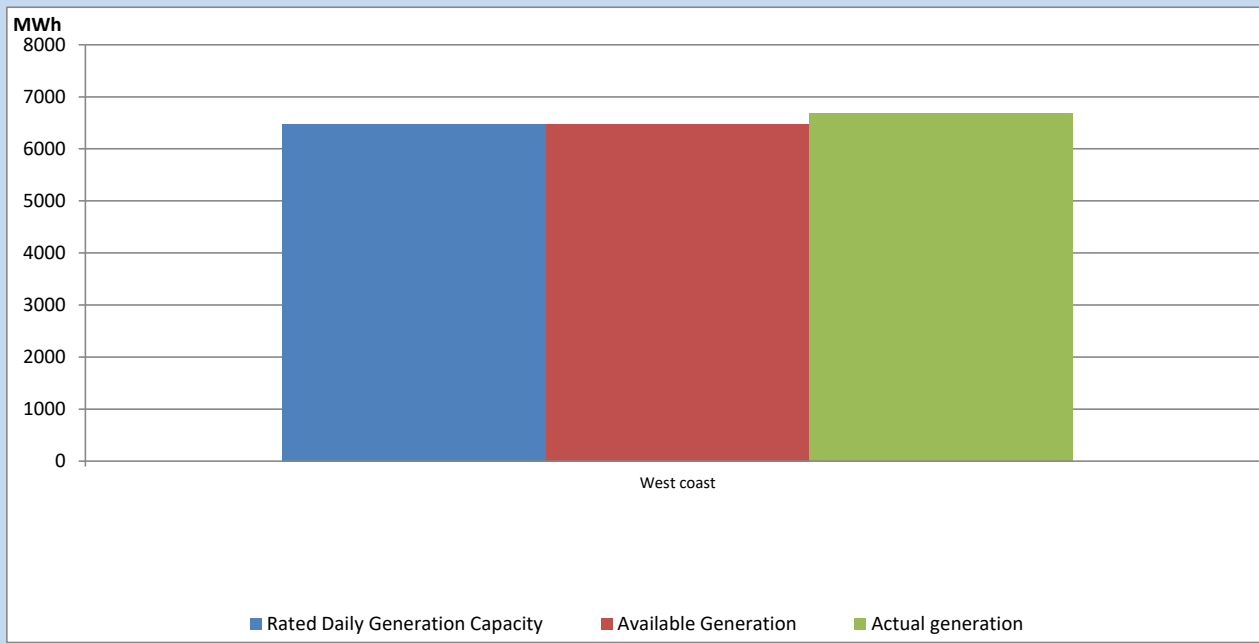


Note- Plant availability is recorded at 6.00 am on

April 6, 2023

## IPP owned Thermal Plant Dispatch

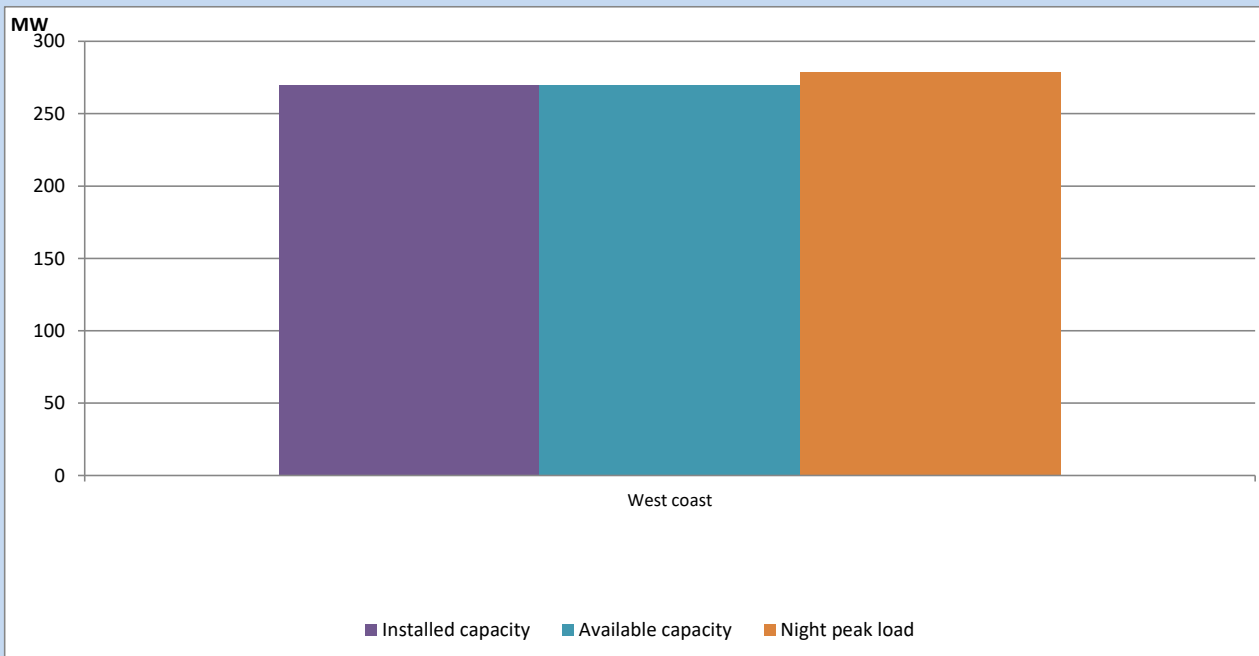
April 5, 2023



Available Generation is estimated based on plant availability at 6.00am on

April 6, 2023

## IPP owned Thermal Plant Loading at the Night Peak

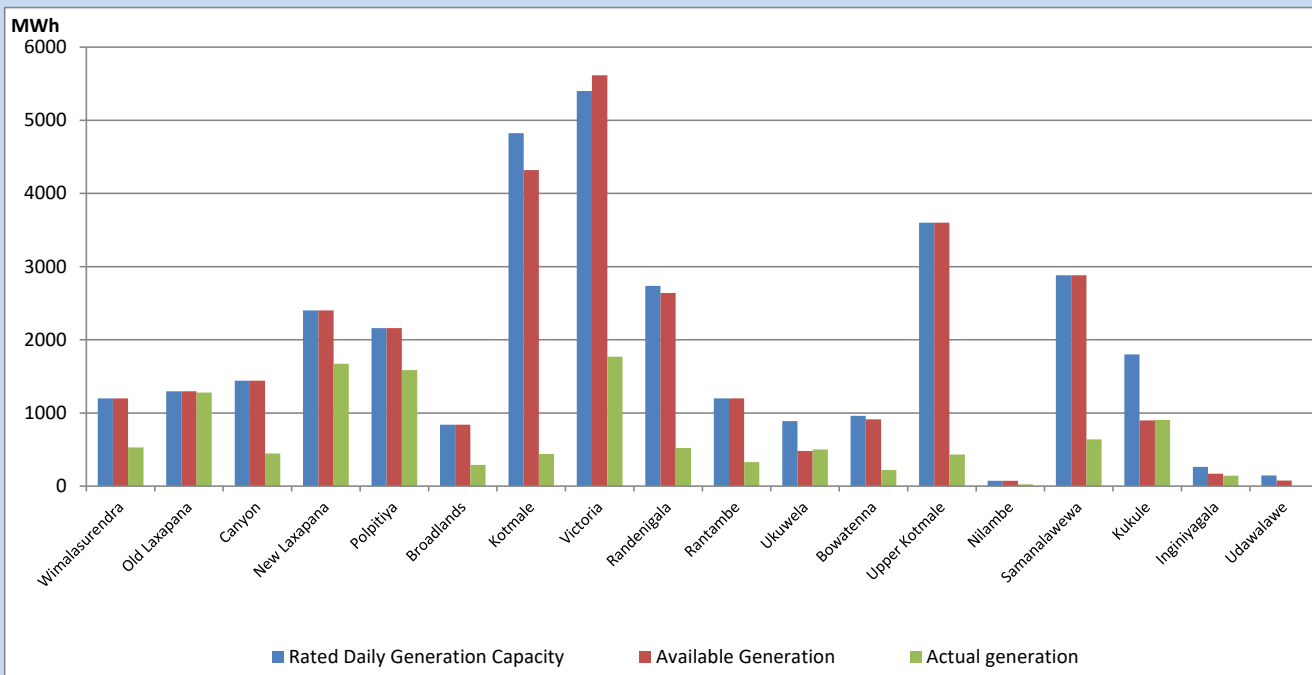


Note- Plant availability is recorded at 6.00 am on

April 6, 2023

## Major Hydro Plant Dispatch

April 5, 2023

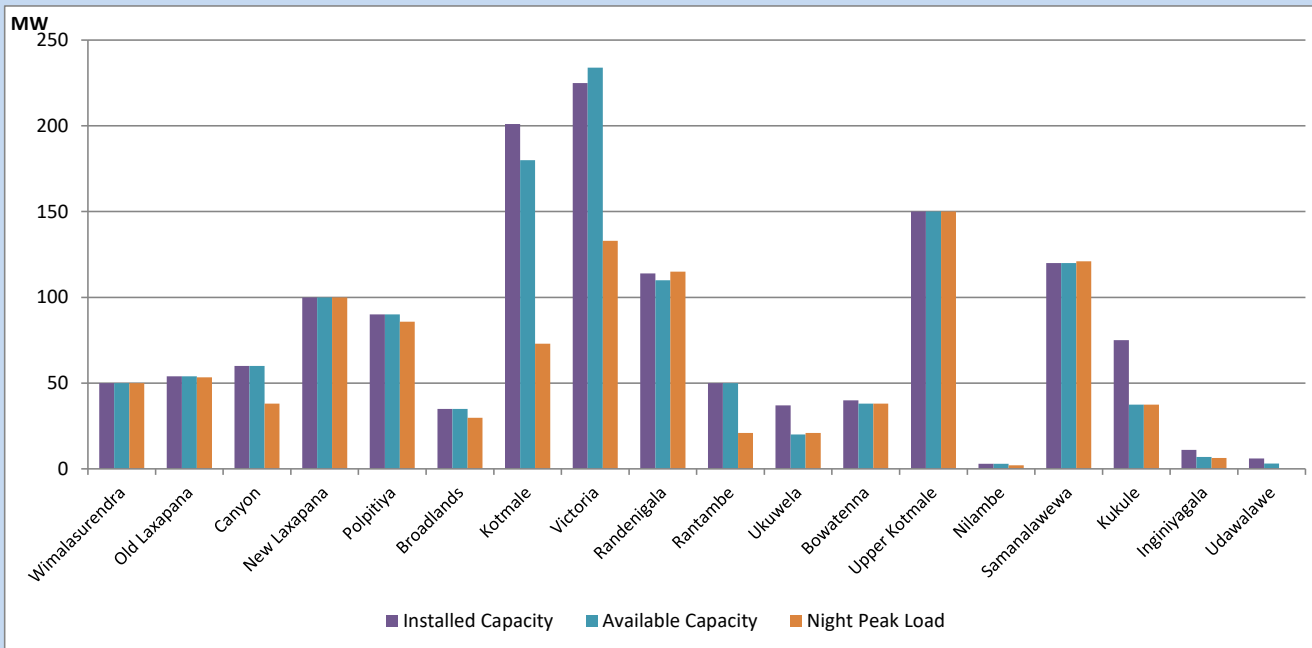


Available Generation is estimated based on plant availability at 6.00am on  
Broadlands power plant is operating in the Commissioning Stage

April 6, 2023

## Major Hydro Plant Loading at Night Peak

April 5, 2023



Note- Plant availability is recorded at 6.00 am on  
Broadlands power plant is operating in the Commissioning Stage

April 6, 2023

## Summary of Major Plant performance

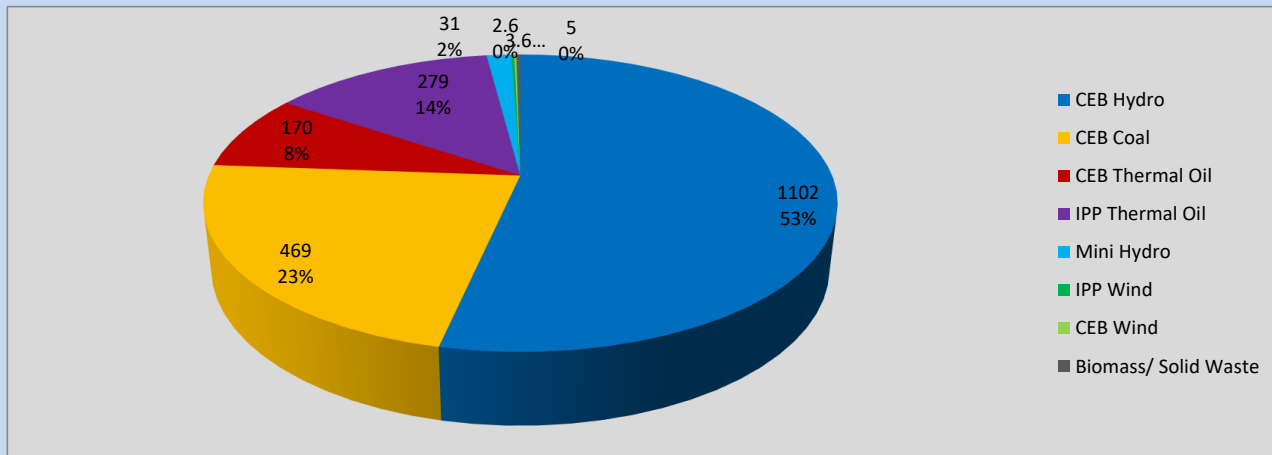
Plant	Installed Capacity	Plant Availability	Night peak Load	Plant Dispatch
	(MW)	(MW)	(MW)	(MWh)
Wimalasurendra	50	50	50	530
Old Laxapana	54	54	53	1,278
Canyon	60	60	38	445
New Laxapana	100	100	100	1,673
Polpitiya	90	90	86	1,585
Broadlands	35	35	30	290
Kotmale	201	180	73	440
Victoria	225	234	133	1,770
Randenigala	114	110	115	521
Rantambe	50	50	21	329
Ukuwela	37	20	21	501
Bowatenna	40	38	38	221
Upper Kotmale	150	150	150	432
Nilambe	3	3	2	23
Samanalawewa	120	120	121	640
Kukule	75	38	38	906
Inginiyagala	11	7	6	143
Udawalawe	6	3	0	0
Puttalam Coal I	270	270	271	6,521
Puttalam Coal II	270	0	0	0
Puttalam Coal III	270	190	198	4,726
KPS Small GTs	64	32	0	0
KPS GT 7	115	115	0	0
KCCP	161	158	0	0
Sapugaskanda A	70	27	16	450
Sapugaskanda B	70	72	72	1,493
Uthura Janani	26	24	23	453
Barge CEB	60	60	59	1,120
CEB-Hambantota	30	18	0	0
CEB-Mathugama	20	12	0	0
ACE Matara	24	0	0	0
Asia Power	50	0	0	0
Sojitz Kelanitissa	163	0	0	0
West Coast	270	270	279	6,686
Nothern Power	36	0	0	0
ACE Embilipitiya	93	0	0	0
<b>Total</b>	<b>3,483</b>	<b>2,589</b>	<b>2,035</b>	<b>35,408</b>

Plant availability is the availability recorded at 6 am on

April 6, 2023

## Contribution to the Night Peak in MW

April 5, 2023

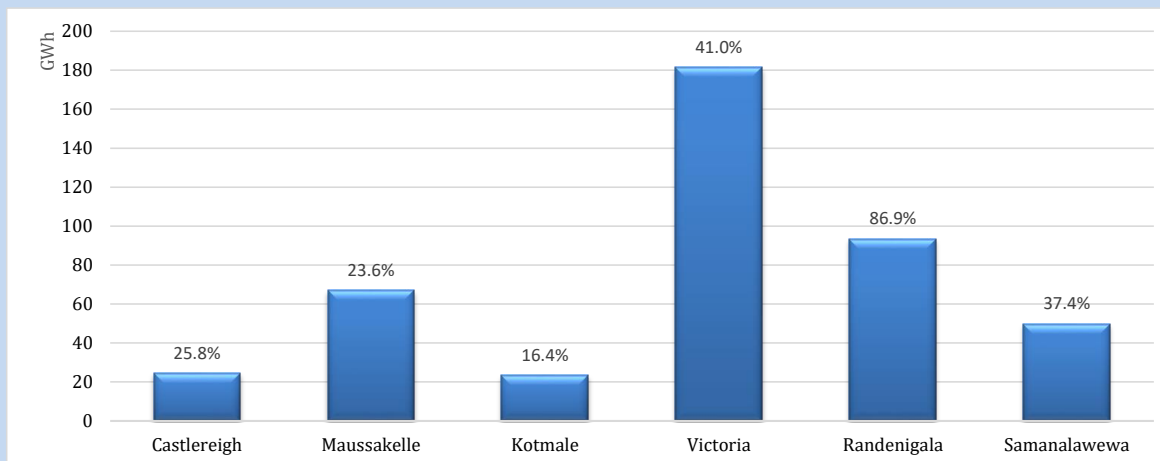


Night Peak*	2,062 MW
Day Peak	1,504 MW
Minimum Demand	1,187 MW

Above figures are excluding contribution from roof top solar, non telemetered solar and mini hydro plants

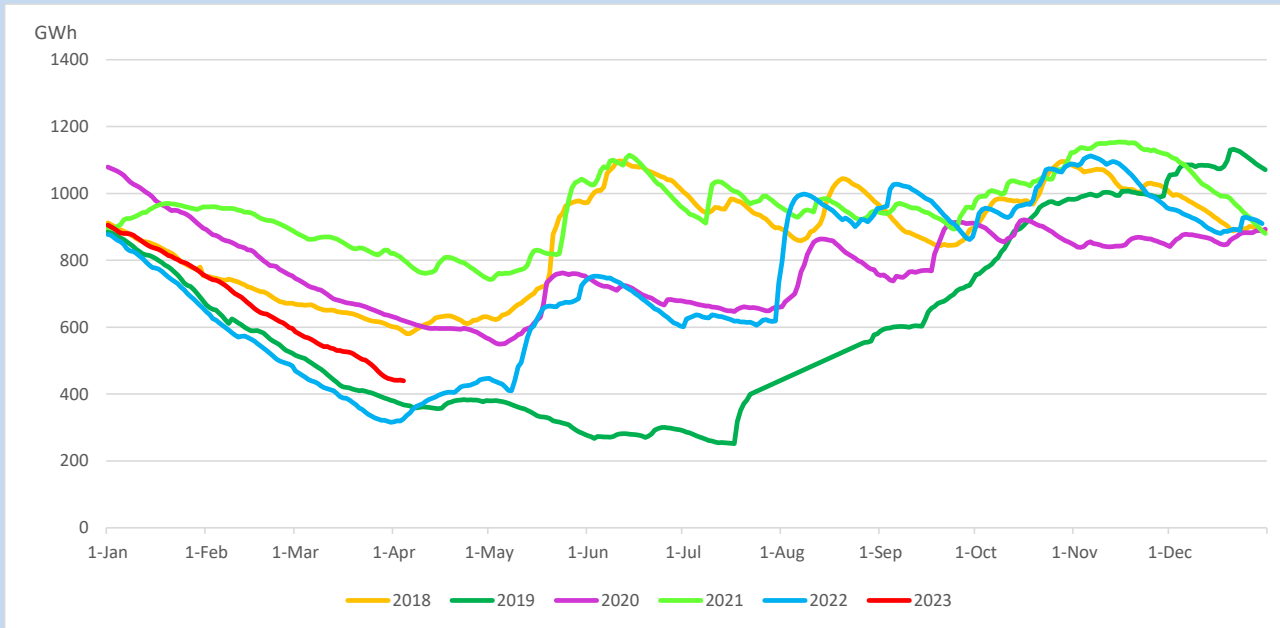
## Reservoir Levels -

as at 06.00 Hr on April 6, 2023

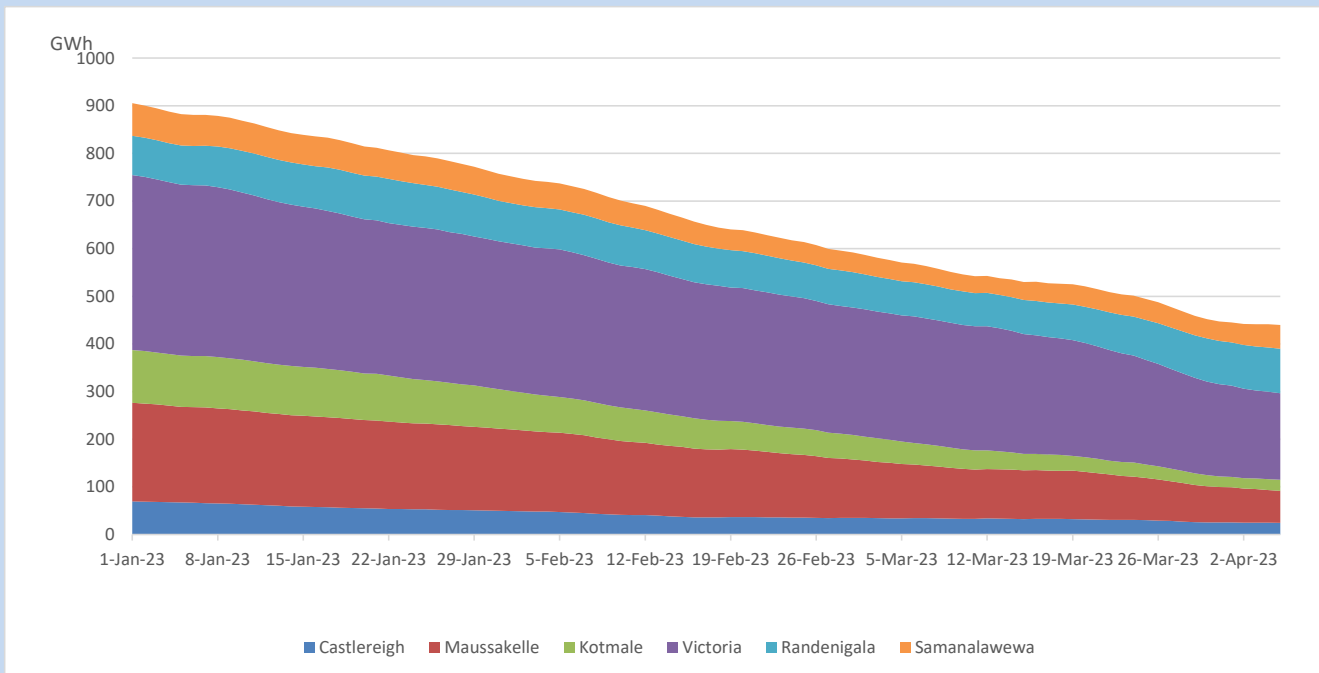


Total Reservoir Level	439.7 GWh
% of Total capacity	36.5%

## Comparison of Total Reservoir Storage Levels with Past Years

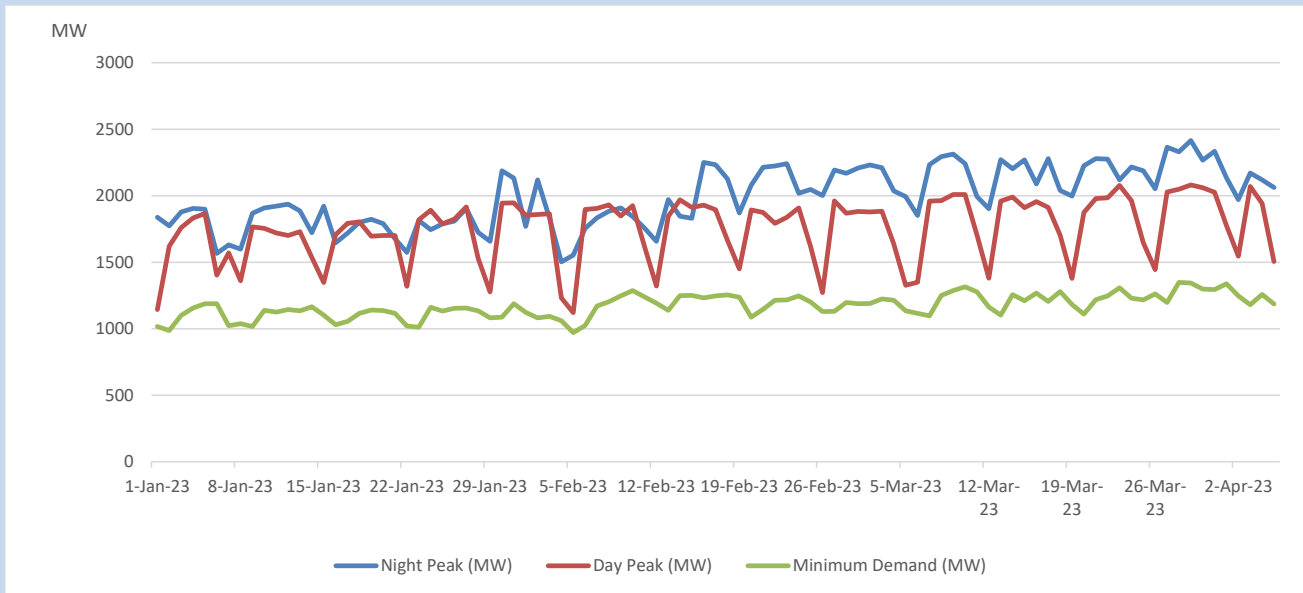


## Variation of Major Hydro Reservoir Levels in the current year (GWh)





## Variation of Demand during the current year

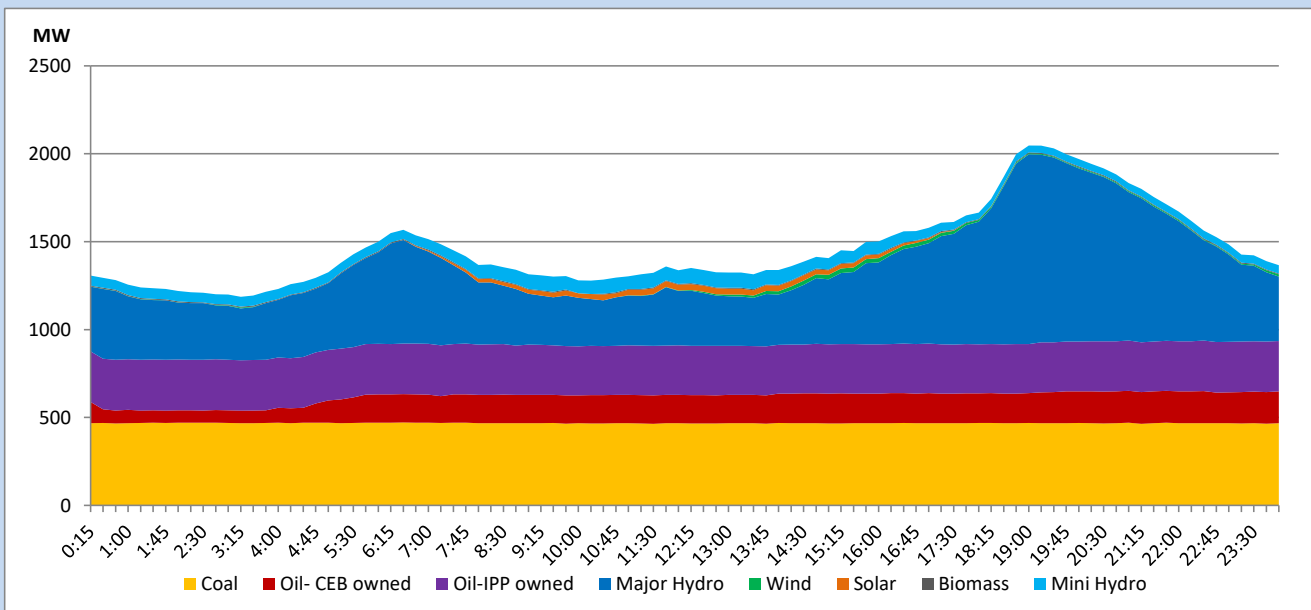


The above figures are excluding contribution from roof top solar, non telemetered solar and mini hydro plants

## Daily Load Curve

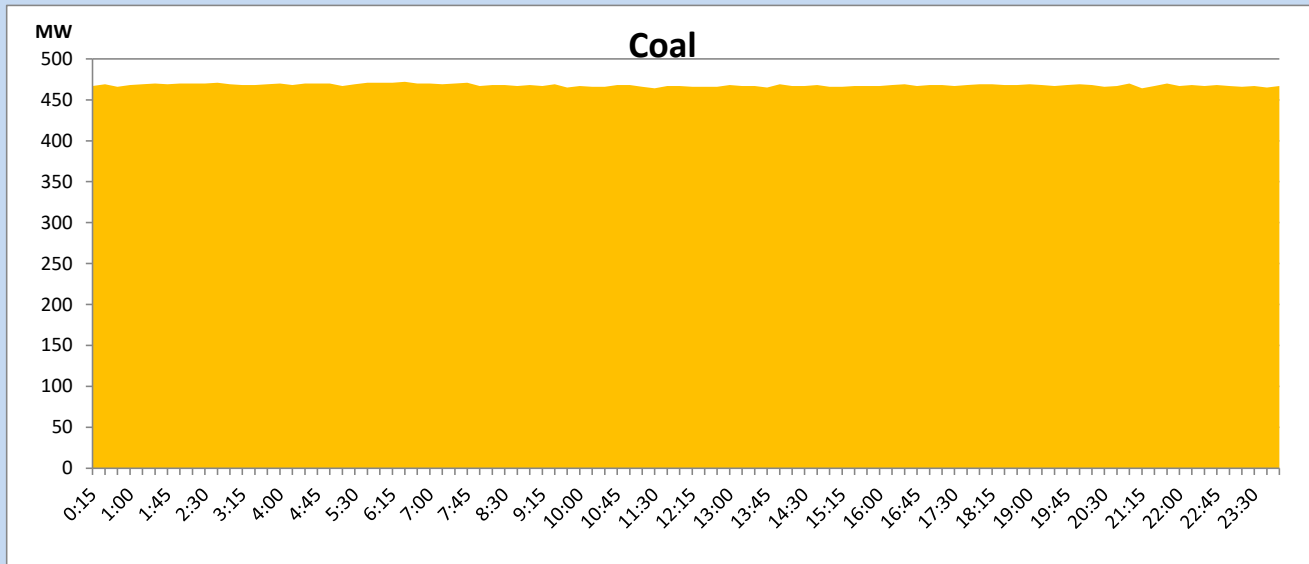
April 5, 2023

Solar and wind data is based on Telemetered Power Stations only



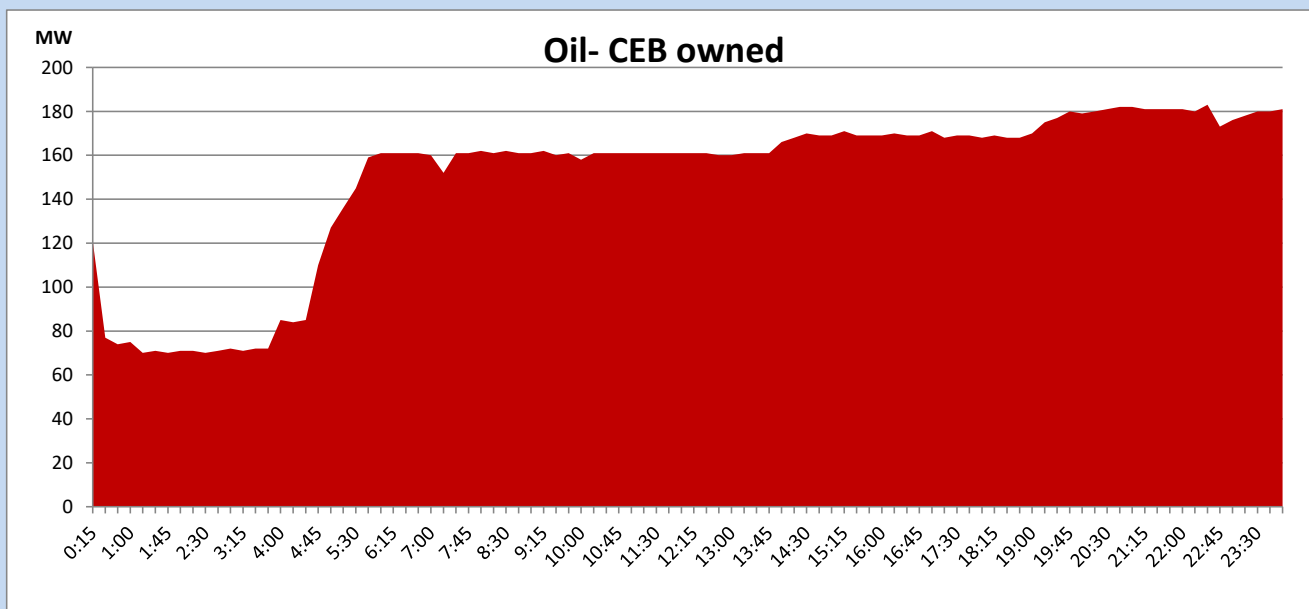
## Coal Generation during

April 5, 2023



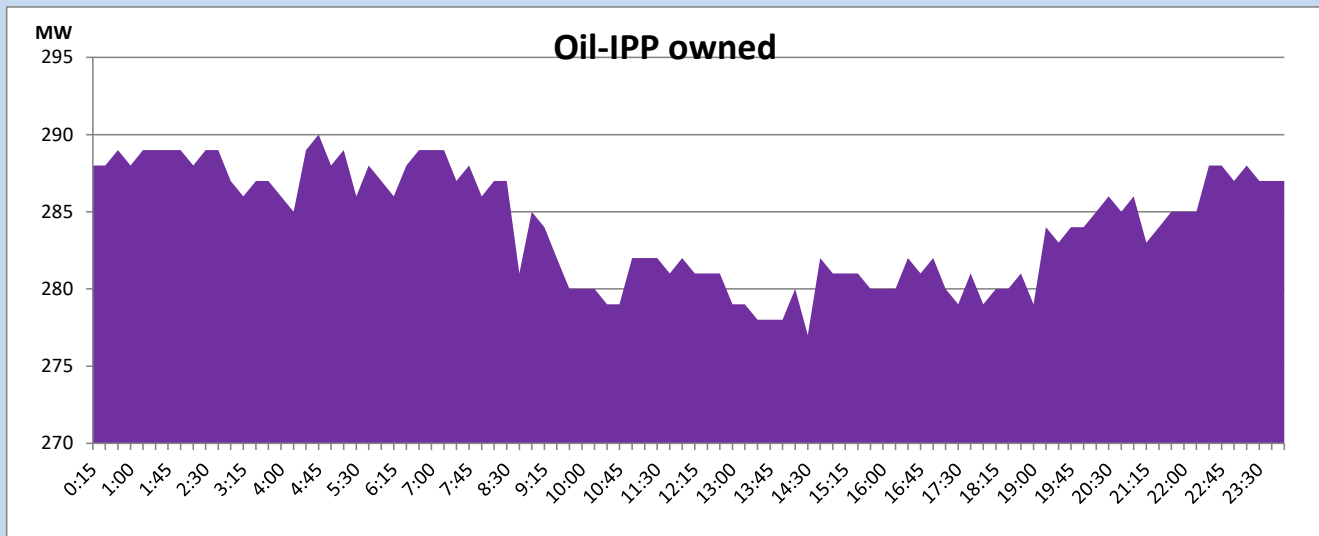
## CEB Oil Plant Generation during

April 5, 2023



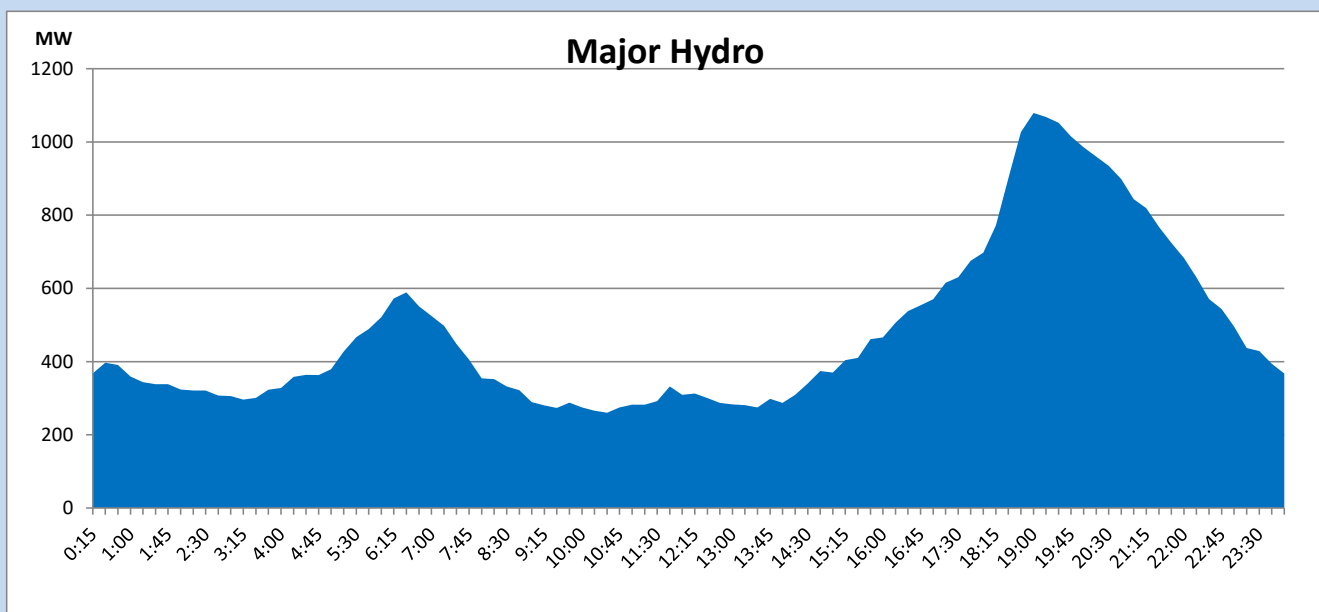
## IPP Oil Plant Generation during

April 5, 2023



## Major Hydro Generation during

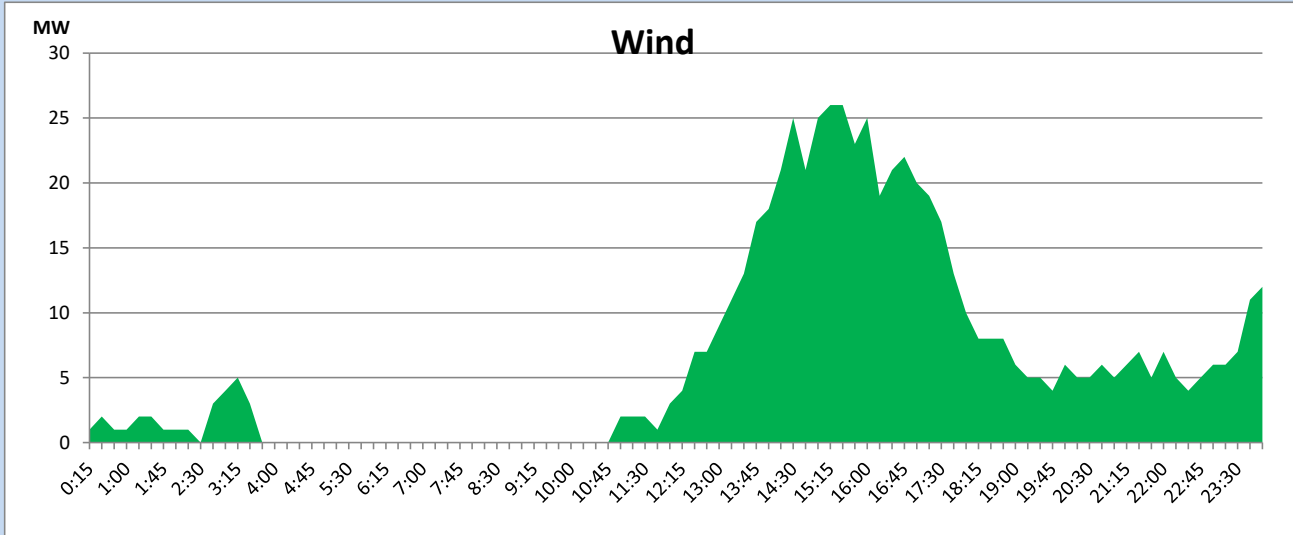
April 5, 2023



## Wind Generation during

April 5, 2023

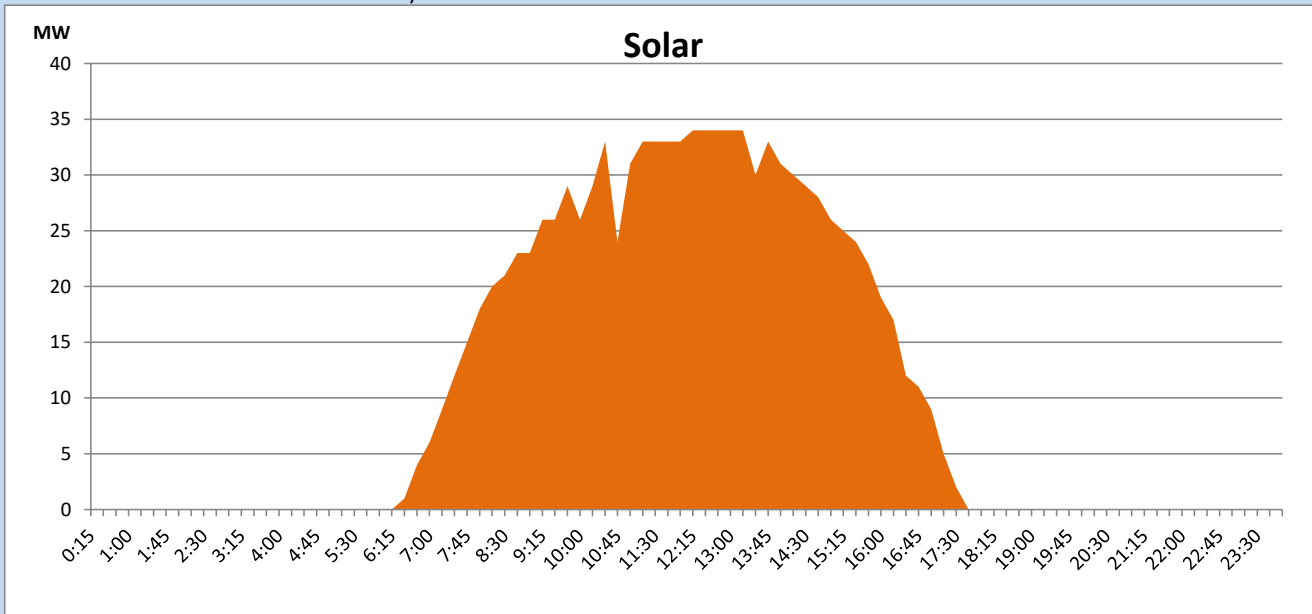
Based on Telemetered Power Stations only



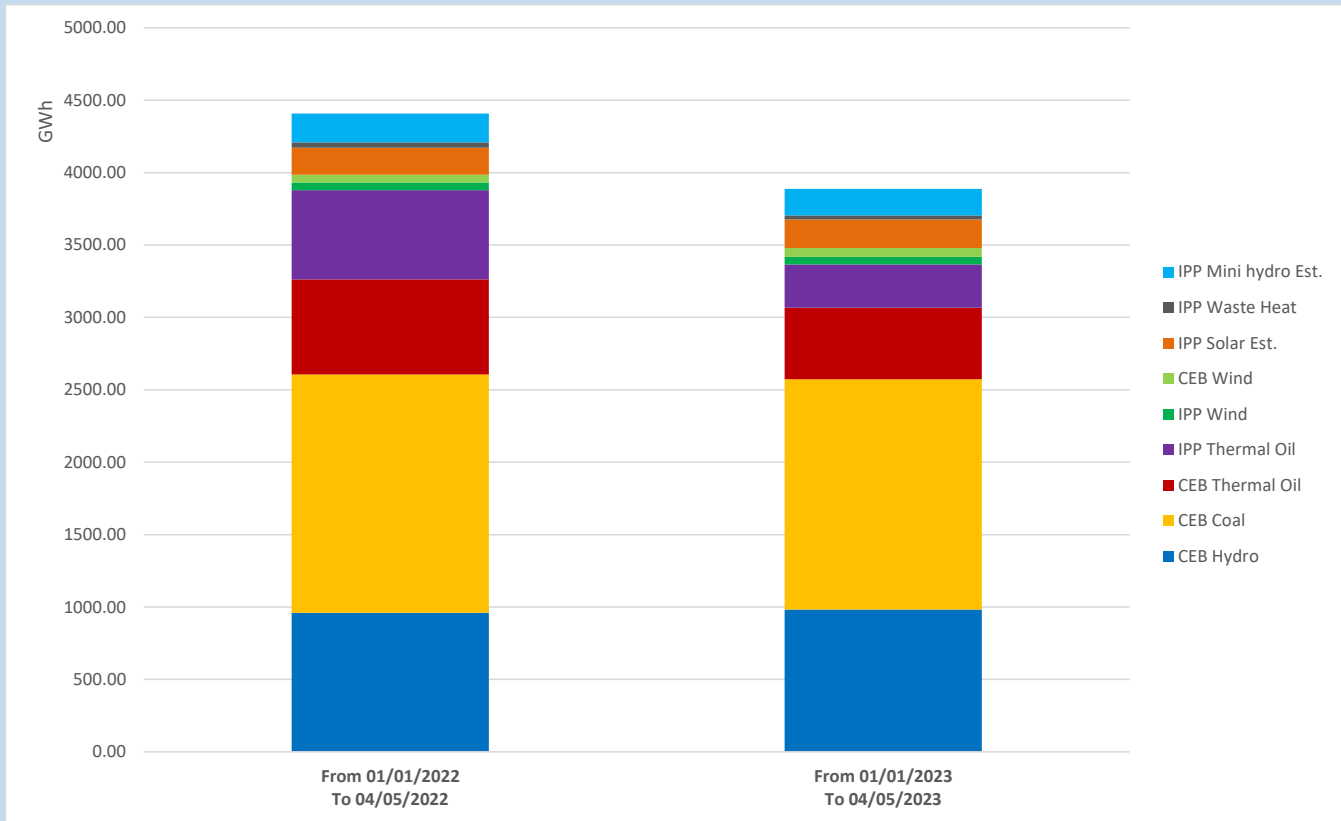
## Solar Generation during

April 5, 2023

Based on Telemetered Power Stations only



## Cumulative Dispatch Comparison with Last Year



The above figures are including contribution from roof top solar, non telemetered solar and mini hydro plants

### Thermal Plant Fuel types

Power Station	Primary Fuel
CEB Thermal	
Sapugaskanda 1	Heavy Fuel
Sapugaskanda 2	Heavy Fuel
Kelanitissa Small Gas Turbines	Auto Diesel
GT 7 - Kelanitissa	Auto Diesel
Kelanitissa CCY	Naphtha or Diesel
Lakvijaya 1	Coal
Lakvijaya 2	Coal
Lakvijaya 3	Coal
Uthuru Janani	Heavy Fuel
Barge CEB	Heavy Fuel

Power Station	Primary Fuel
Private Thermal	
West Coast	Auto Diesel / Heavy Fuel

### Major Incidents reported during the day

April 5, 2023

- 1) Victoria unit 03 tripped and rejected 40MW from the system at 17:12hrs due to turbine pit pump failure. Unit 03 resumed generation at 20:16hrs.
- 2) Rantambe 220/132kV Couplin T/F 01 tripped from both ends at 04:31hrs(06/04/2023) with the indication of " T/F pressure device Y-Phase trip". T/F 01 normalized at 06:24hrs(06/04/2023).