

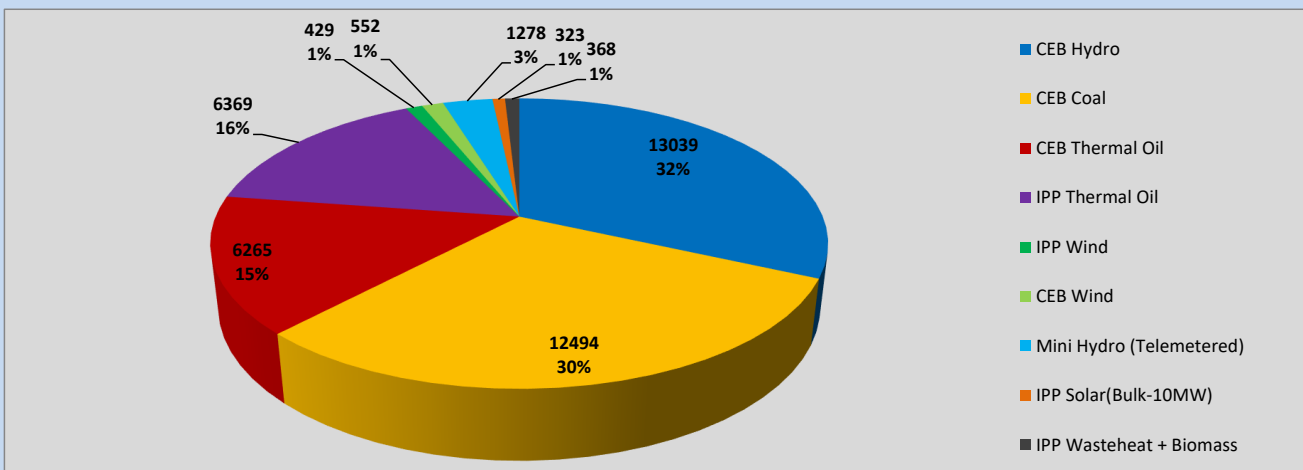
Generation and Reservoirs Statistics

April 4, 2023



PUBLIC UTILITIES COMMISSION OF SRI LANKA

Daily Generation Mix in MWh



Total Generation (Excluding estimated figures) =

41,117 MWh

Estimated figures of CEB generation report

Estimated unserved energy = 0.00 GWh

Estimated Mini Hydro (Non telemetered) = 1102 MWh

Estimated IPP Solar PV (Bulk 1-10MW) = 304 MWh

Estimated Solar Roof Top PV = 1640 MWh

Cumulative Dispatch

Following data excludes the contribution from roof top solar, non telemetered solar and mini hydro plants

For Current Month

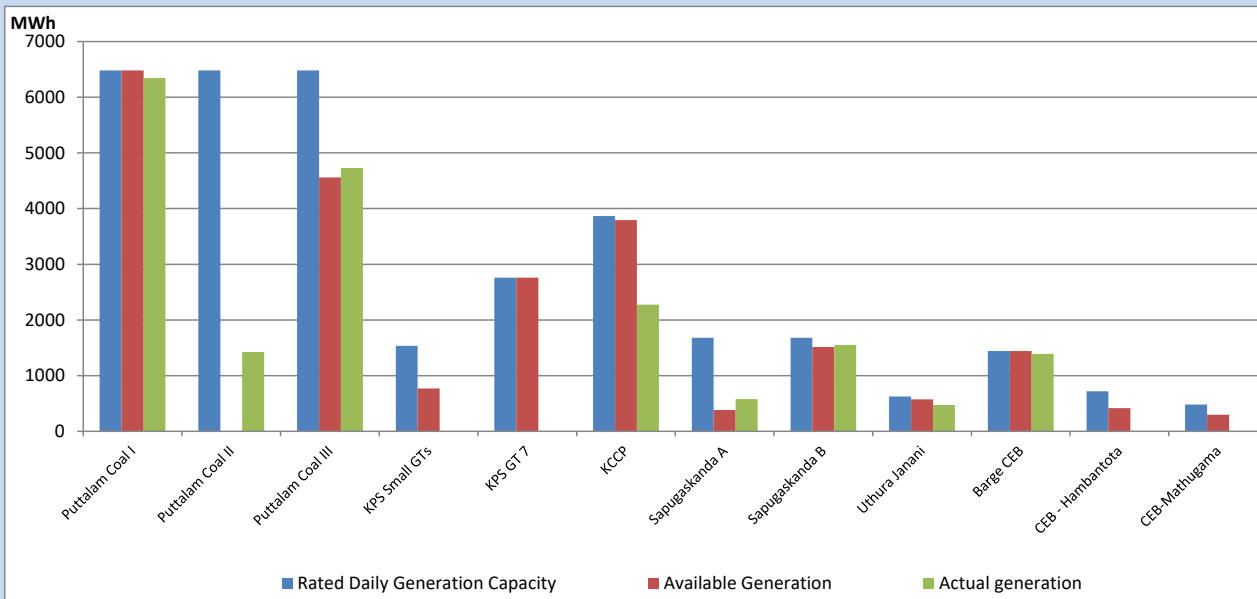
Category	Dispatch (GWh)	
CEB Hydro	49	31.39%
CEB Coal	57	36.35%
CEB Thermal Oil	20	13.00%
IPP Thermal	21	13.45%
SPP Wind	1	0.70%
CEB Wind	2	1.00%
Mini Hydro (Telemetered)	4	2.41%
IPP Solar(Bulk-10MW)	1	0.92%
IPP Wasteheat + BMP	1	0.78%
Total	157	

For Current Year

Category	Dispatch (GWh)	
CEB Hydro	971	27.16%
CEB Coal	1,580	44.21%
CEB Thermal Oil	491	13.73%
IPP Thermal	291	8.15%
SPP Wind	52	1.46%
CEB Wind	62	1.73%
Mini Hydro (Telemetered)	73	2.03%
IPP Solar(Bulk-10MW)	27	0.76%
IPP Wasteheat	28	0.77%
Total	3,573	

CEB owned Thermal Plant Dispatch

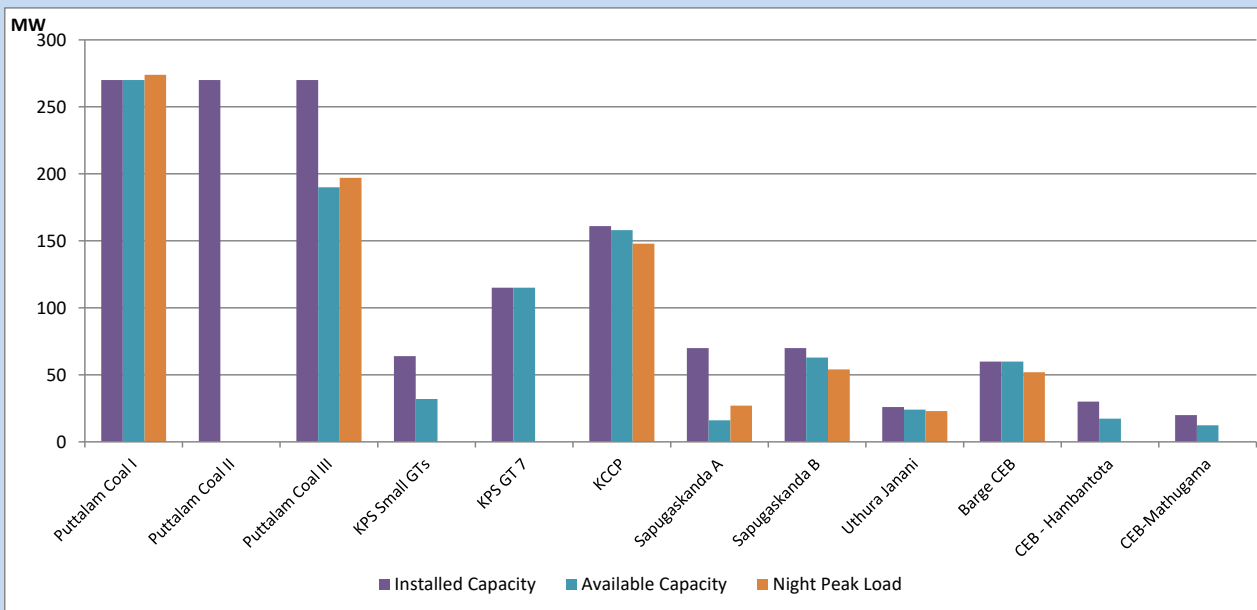
April 4, 2023



Available Generation is estimated based on plant availability at 6.00am on

April 5, 2023

CEB owned Thermal Plant Loading at the Night Peak

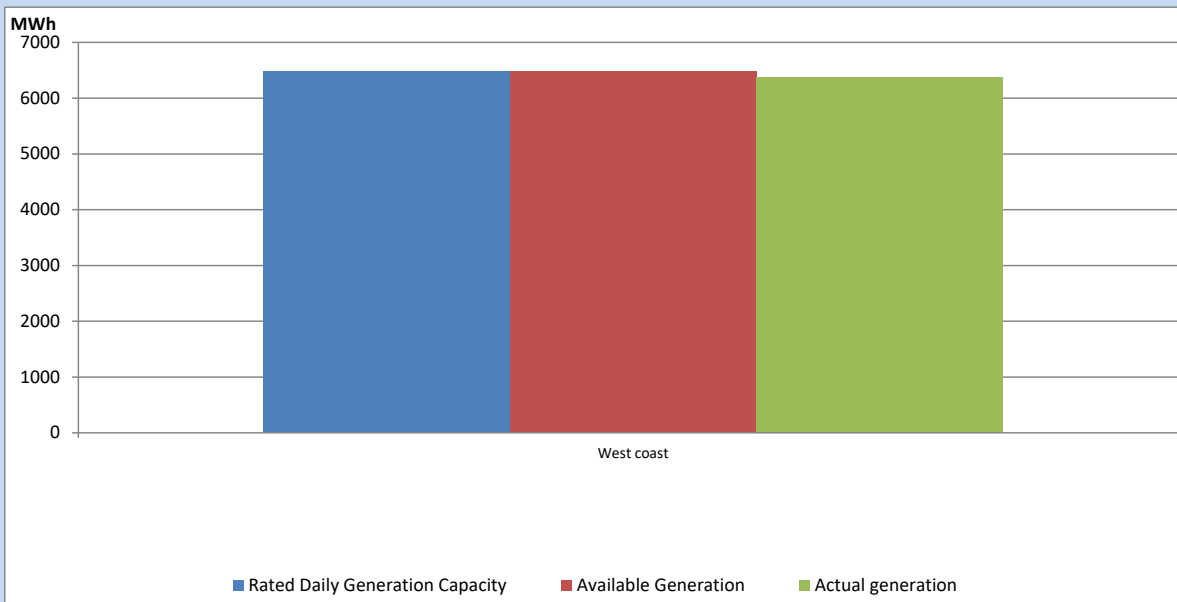


Note- Plant availability is recorded at 6.00 am on

April 5, 2023

IPP owned Thermal Plant Dispatch

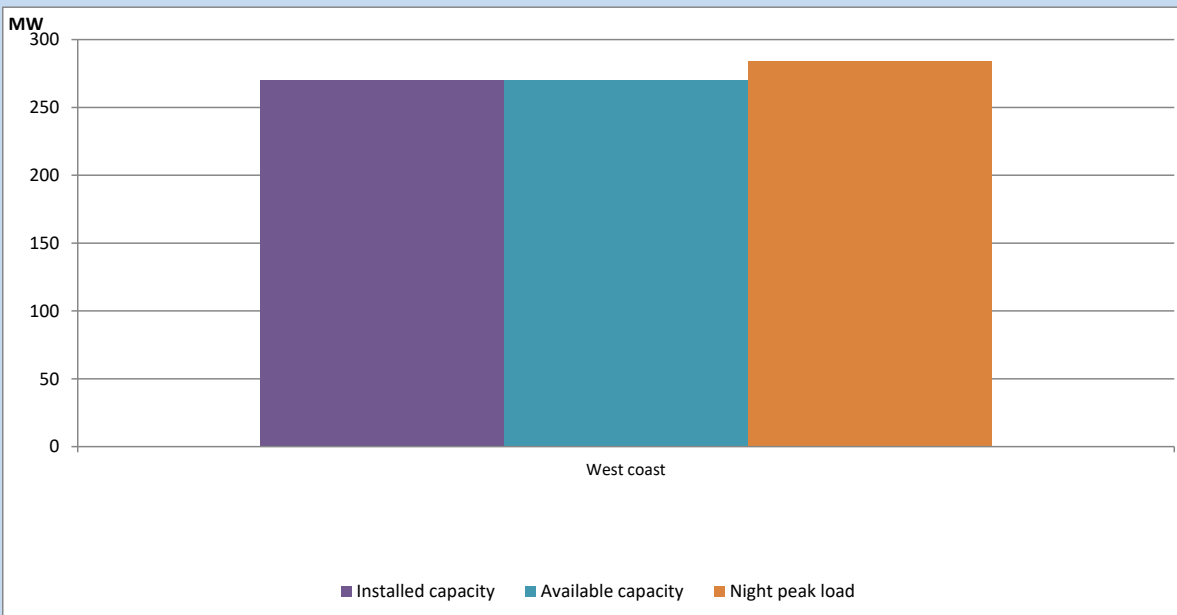
April 4, 2023



Available Generation is estimated based on plant availability at 6.00am on

April 5, 2023

IPP owned Thermal Plant Loading at the Night Peak

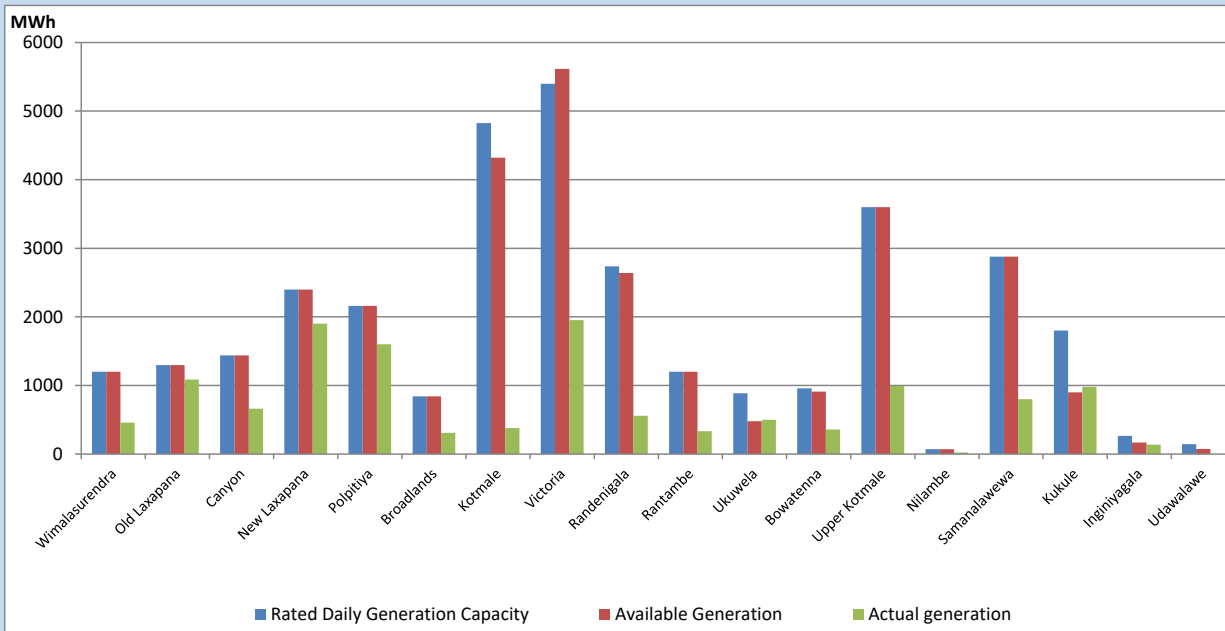


Note- Plant availability is recorded at 6.00 am on

April 5, 2023

Major Hydro Plant Dispatch

April 4, 2023

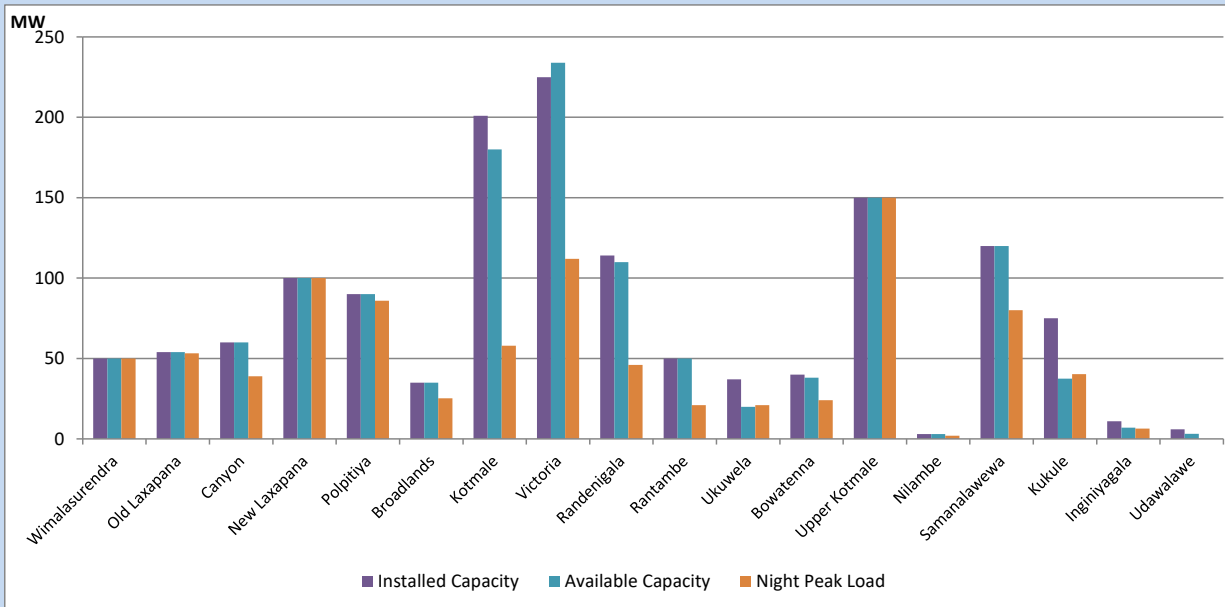


Available Generation is estimated based on plant availability at 6.00am on
Broadlands power plant is operating in the Commissioning Stage

April 5, 2023

Major Hydro Plant Loading at Night Peak

April 4, 2023



Note- Plant availability is recorded at 6.00 am on
Broadlands power plant is operating in the Commissioning Stage

April 5, 2023

Summary of Major Plant performance

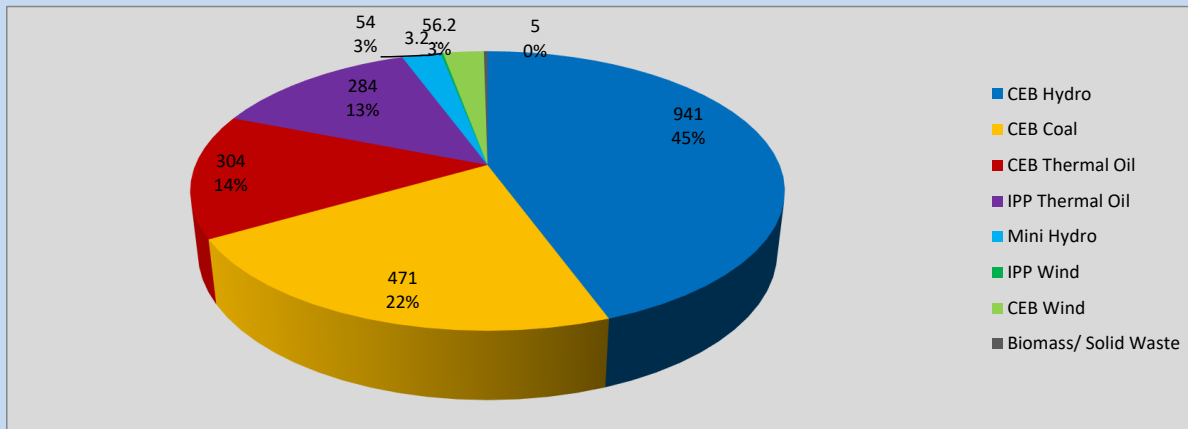
Plant	Installed Capacity	Plant Availability	Night peak Load	Plant Dispatch
	(MW)	(MW)	(MW)	(MWh)
Wimalasurendra	50	50	50	458
Old Laxapana	54	54	53	1,088
Canyon	60	60	39	662
New Laxapana	100	100	100	1,900
Polpitiya	90	90	86	1,600
Broadlands	35	35	25	310
Kotmale	201	180	58	380
Victoria	225	234	112	1,954
Randenigala	114	110	46	557
Rantambe	50	50	21	334
Ukuwela	37	20	21	501
Bowatenna	40	38	24	359
Upper Kotmale	150	150	150	994
Nilambe	3	3	2	24
Samanalawewa	120	120	80	800
Kukule	75	38	40	980
Inginiyagala	11	7	6	138
Udawalawe	6	3	0	0
Puttalam Coal I	270	270	274	6,343
Puttalam Coal II	270	0	0	1,424
Puttalam Coal III	270	190	197	4,727
KPS Small GTs	64	32	0	0
KPS GT 7	115	115	0	0
KCCP	161	158	148	2,273
Sapugaskanda A	70	16	27	578
Sapugaskanda B	70	63	54	1,551
Uthura Janani	26	24	23	472
Barge CEB	60	60	52	1,391
CEB-Hambantota	30	17	0	0
CEB-Mathugama	20	12	0	0
ACE Matara	24	0	0	0
Asia Power	50	0	0	0
Sojitz Kelanitissa	163	0	0	0
West Coast	270	270	284	6,369
Nothern Power	36	0	0	0
ACE Embilipitiya	93	0	0	0
Total	3,483	2,569	2,091	41,117

Plant availability is the availability recorded at 6 am on

April 5, 2023

Contribution to the Night Peak in MW

April 4, 2023

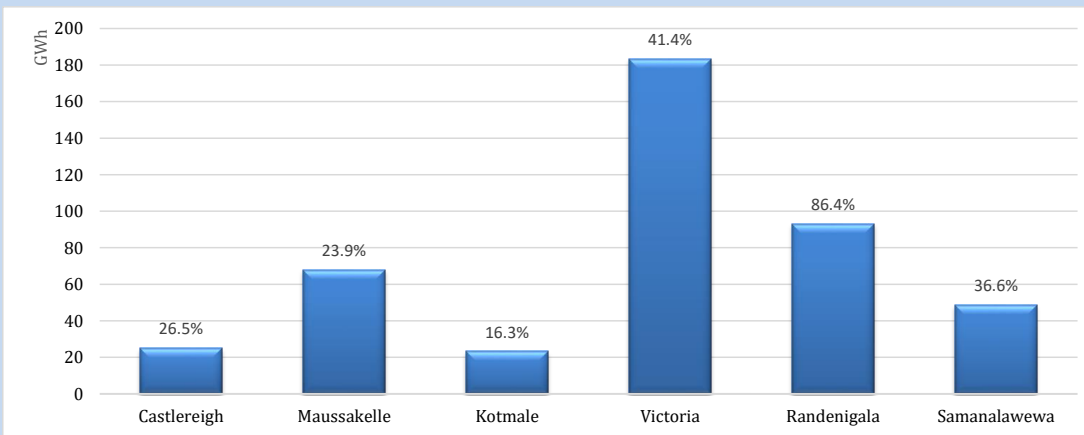


Night Peak*	2,118 MW
Day Peak	1,942 MW
Minimum Demand	1,258 MW

Above figures are excluding contribution from roof top solar, non telemetered solar and mini hydro plants

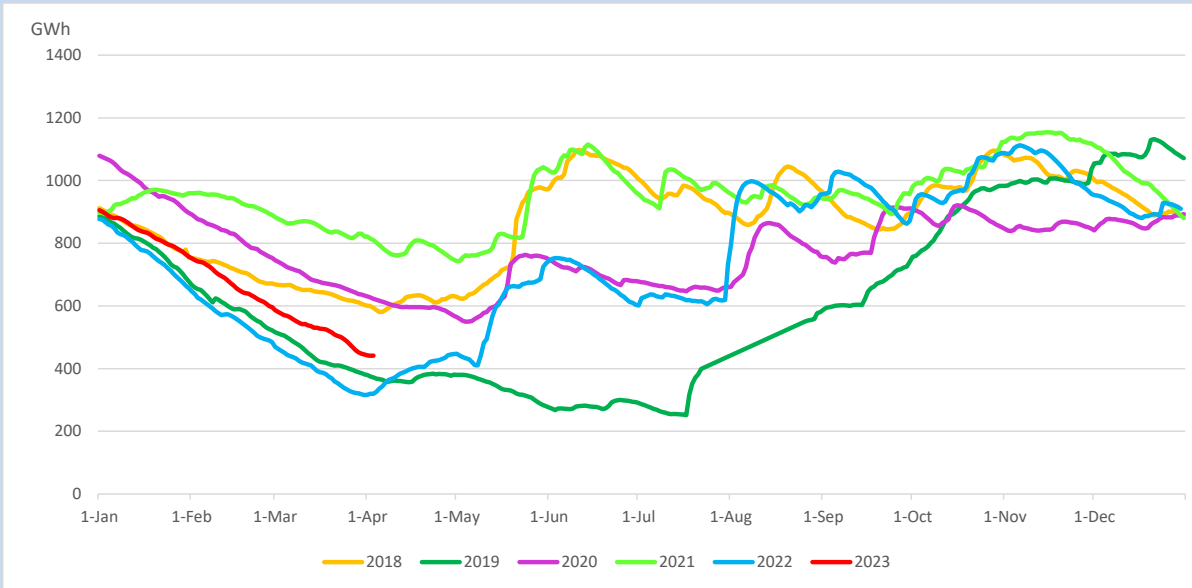
Reservoir Levels -

as at 06.00 Hr on April 5, 2023

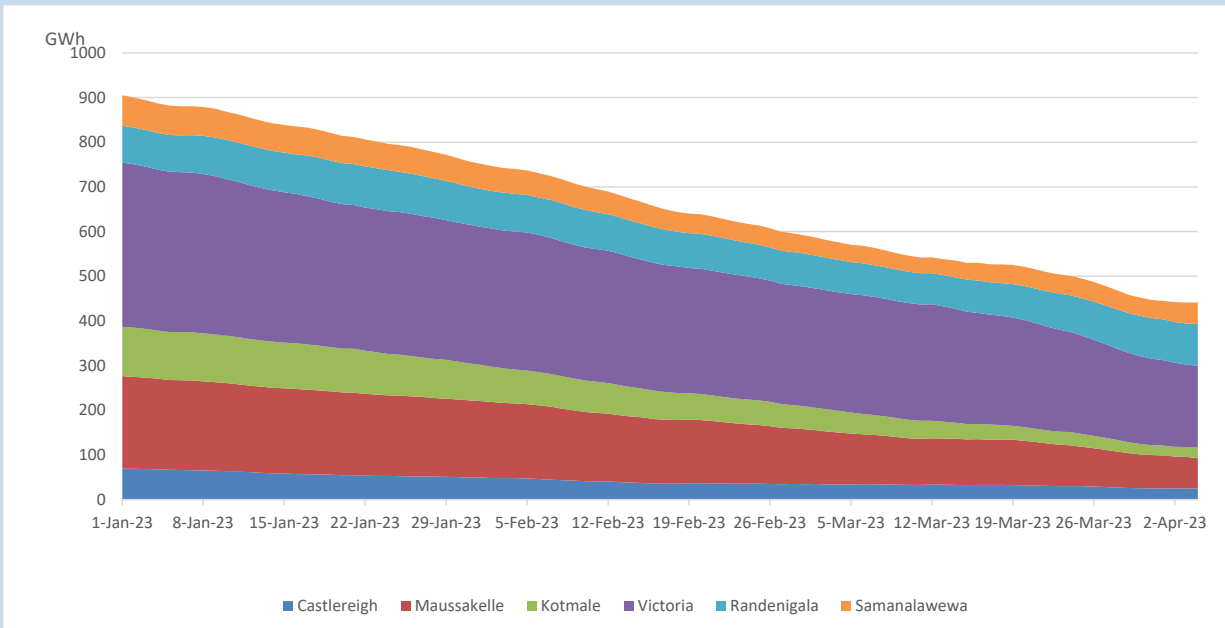


Total Reservoir Level	441.6 GWh
% of Total capacity	36.6%

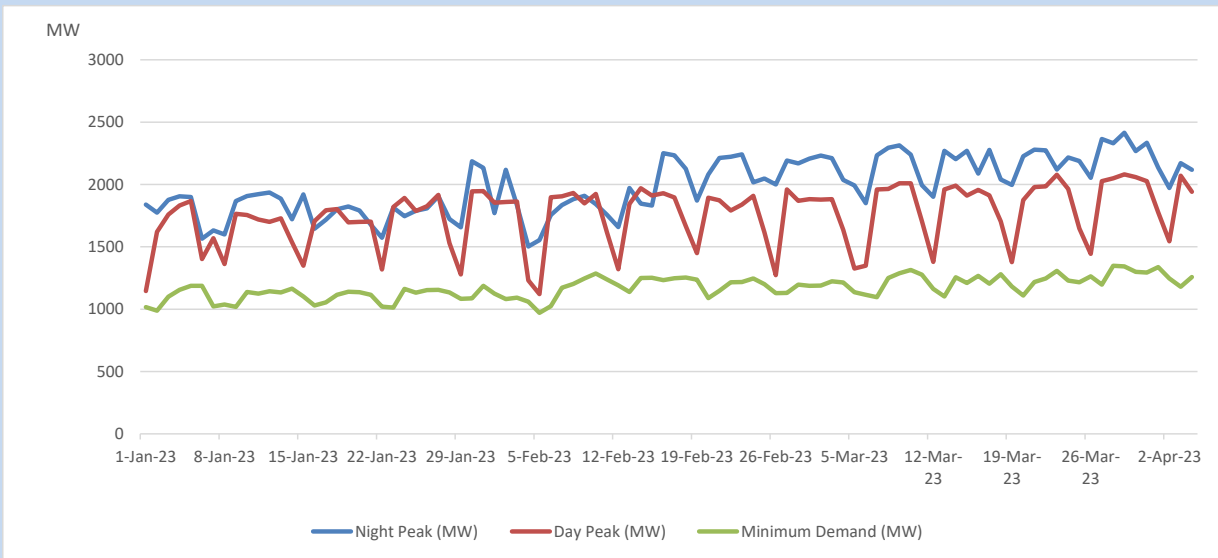
Comparison of Total Reservoir Storage Levels with Past Years



Variation of Major Hydro Reservoir Levels in the current year (GWh)



Variation of Demand during the current year

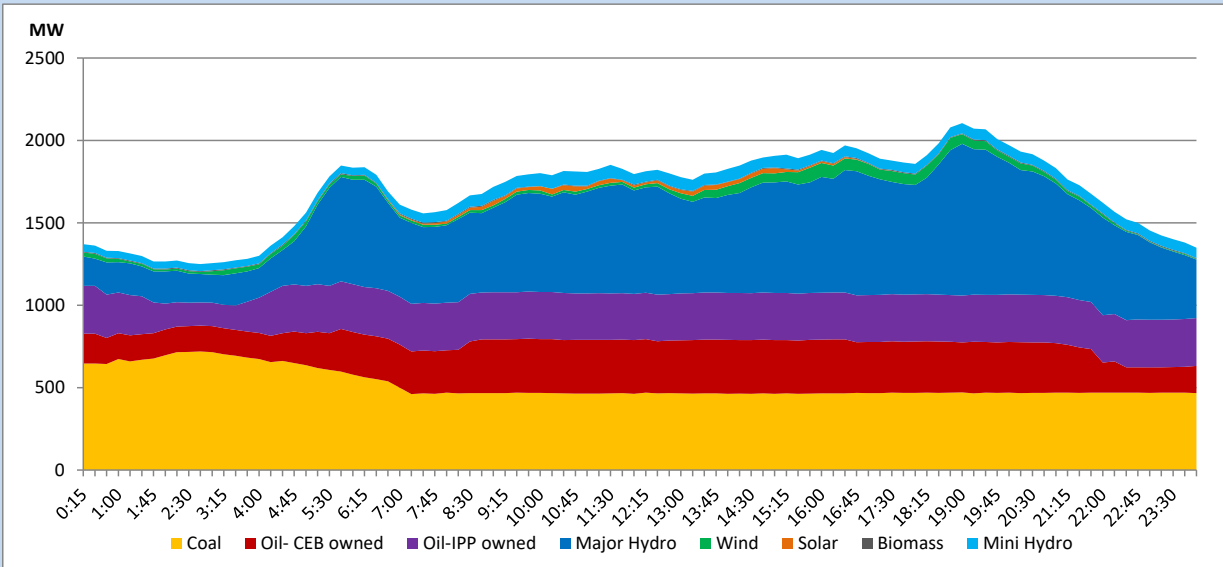


The above figures are excluding contribution from roof top solar, non telemetered solar and mini hydro plants

Daily Load Curve

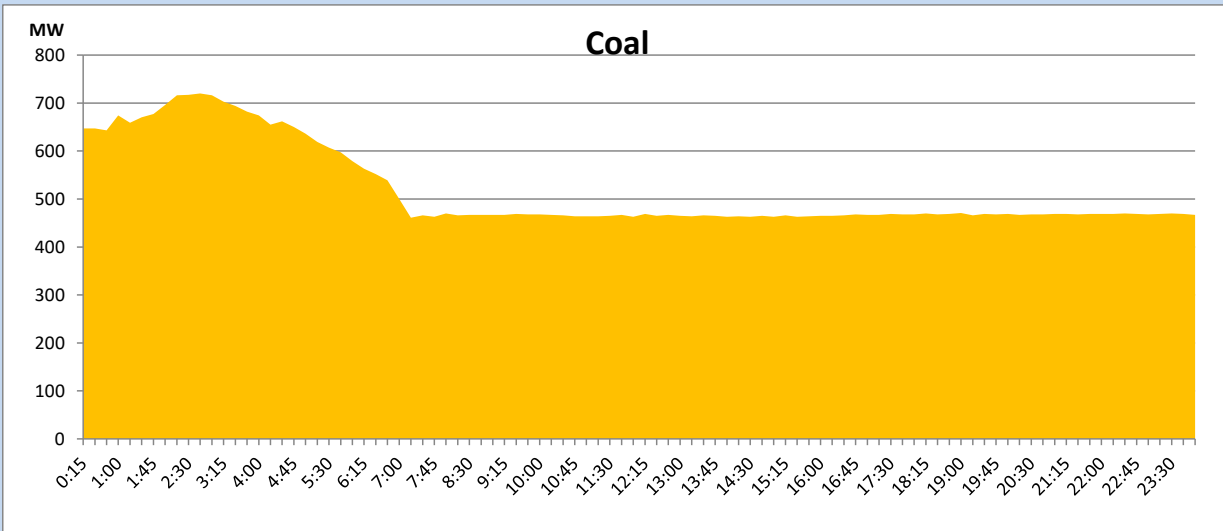
April 4, 2023

Solar and wind data is based on Telemetered Power Stations only



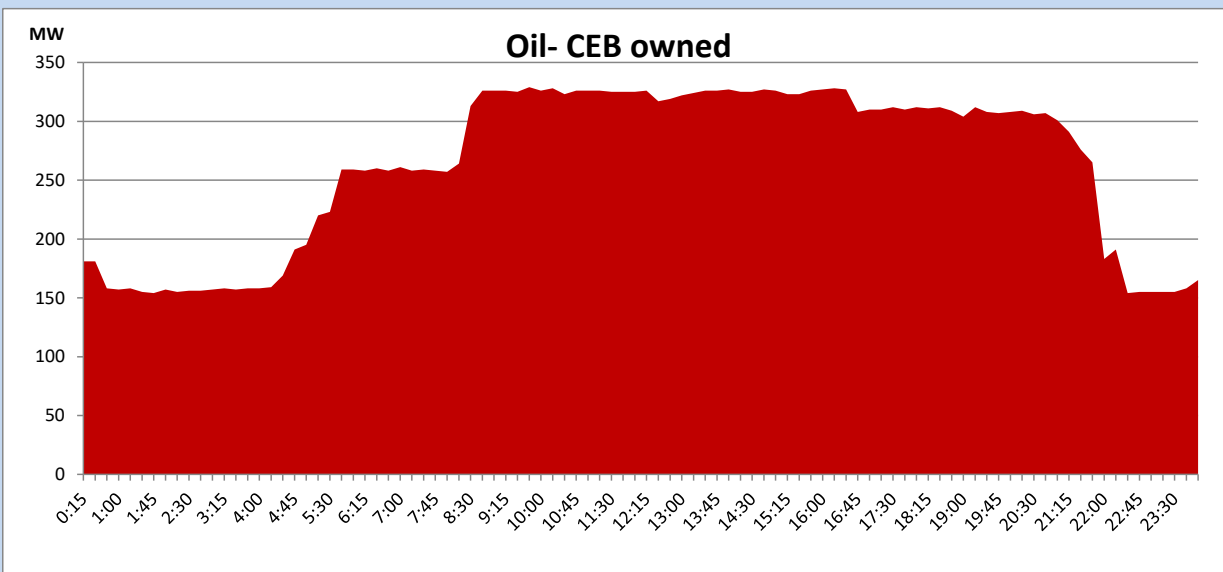
Coal Generation during

April 4, 2023



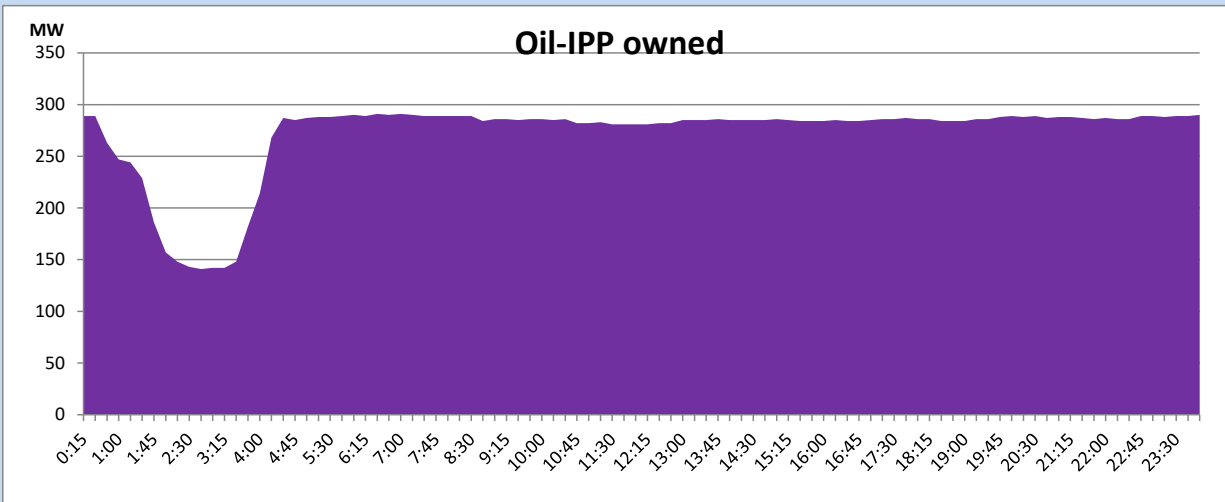
CEB Oil Plant Generation during

April 4, 2023



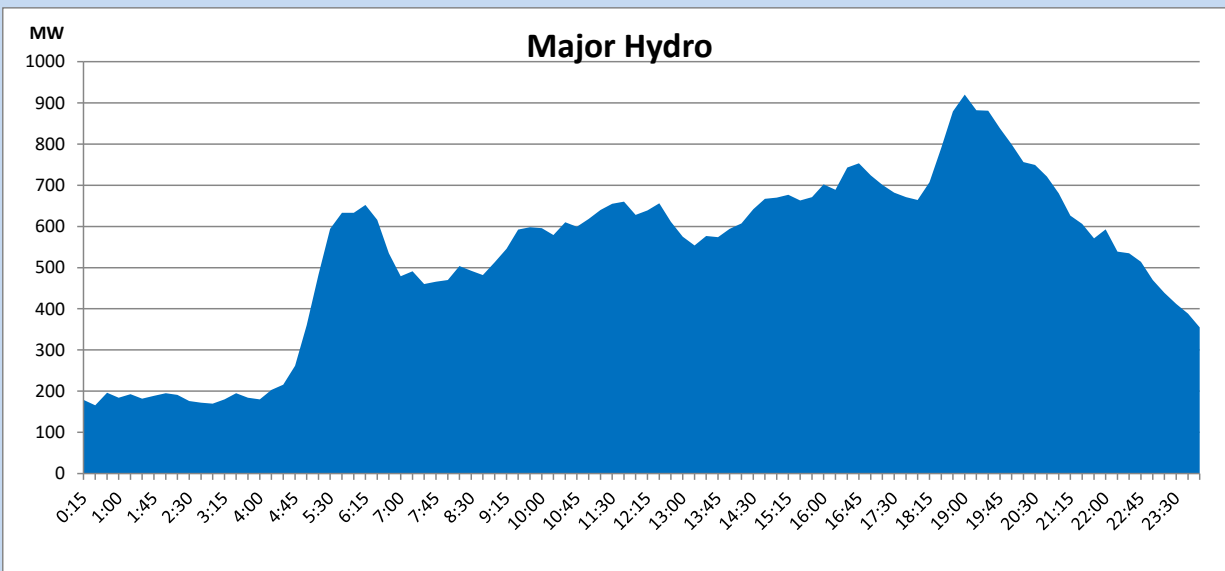
IPP Oil Plant Generation during

April 4, 2023



Major Hydro Generation during

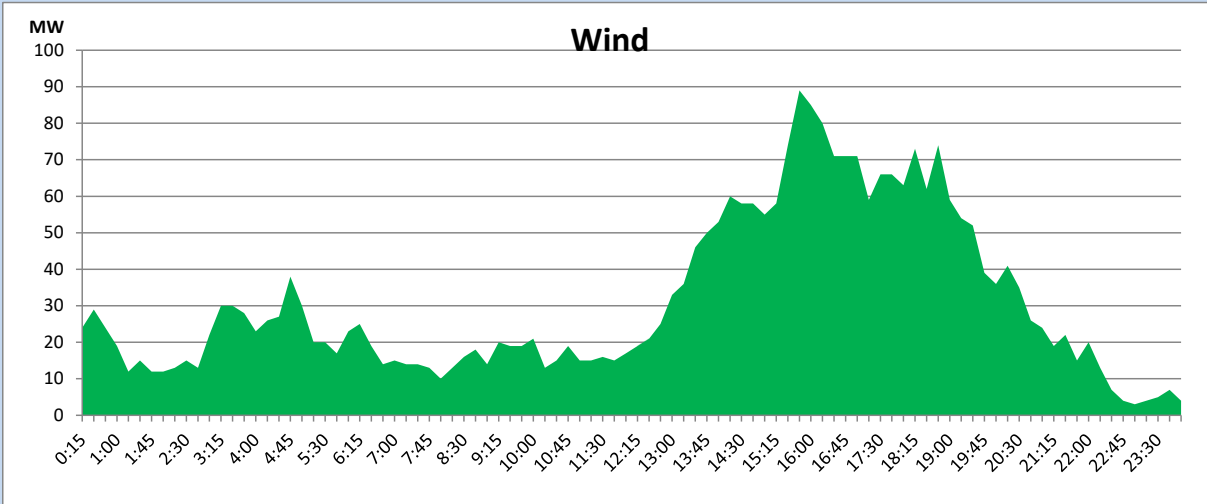
April 4, 2023



Wind Generation during

April 4, 2023

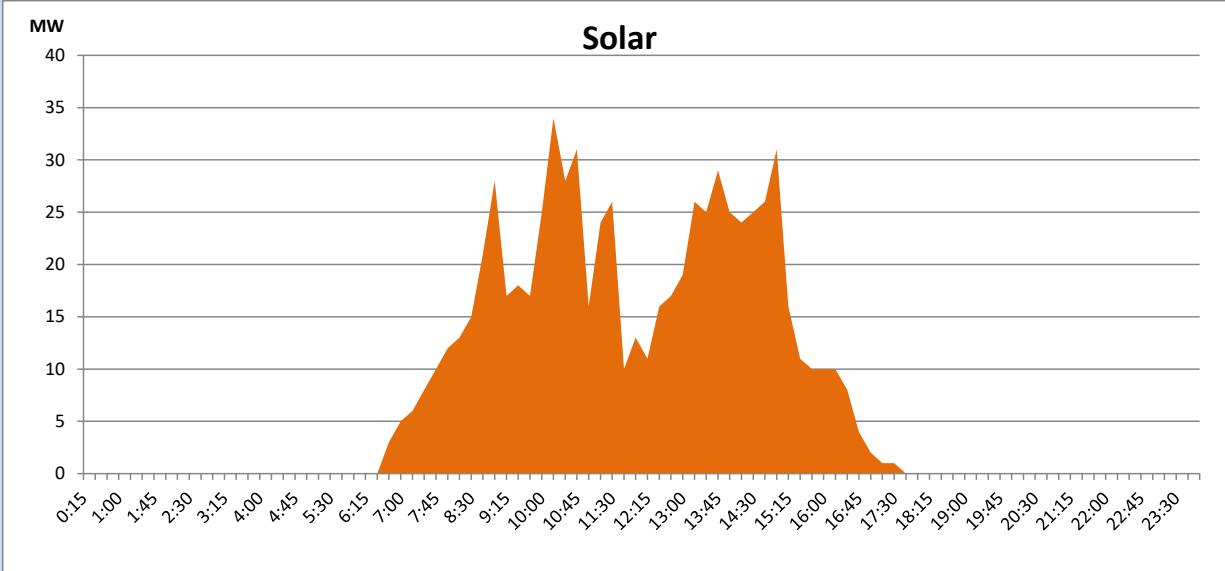
Based on Telemetered Power Stations only



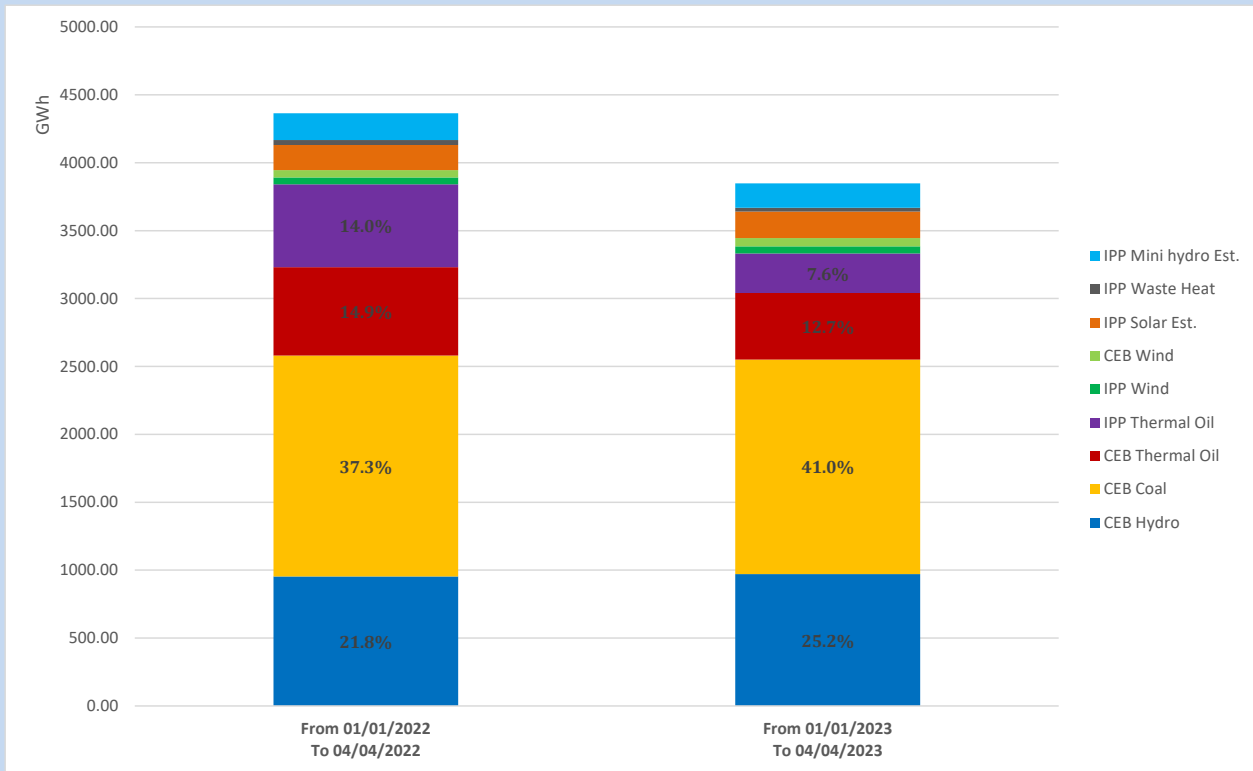
Solar Generation during

April 4, 2023

Based on Telemetered Power Stations only



Cumulative Dispatch Comparison with Last Year



The above figures are including contribution from roof top solar, non telemetered solar and mini hydro plants

Thermal Plant Fuel types

Power Station	Primary Fuel
CEB Thermal	
Sapugaskanda 1	Heavy Fuel
Sapugaskanda 2	Heavy Fuel
Kelanitissa Small Gas Turbines	Auto Diesel
GT 7 - Kelanitissa	Auto Diesel
Kelanitissa CCY	Naphtha or Diesel
Lakvijaya 1	Coal
Lakvijaya 2	Coal
Lakvijaya 3	Coal
Uthuru Janani	Heavy Fuel
Barge CEB	Heavy Fuel

Power Station	Primary Fuel
Private Thermal	
West Coast	Auto Diesel / Heavy Fuel

Major Incidents reported during the day

April 4, 2023

- 1) LVPS Unit - 2 made forced shutdown at 7:11hrs due to leakage in feed water line.
- 2) Sapugaskanda P/S Gen 12 tripped at 16.39hrs due to sensor fault on exhaust gas cylinder -1 and yet to resume generation.
- 3) Habarana 132/33 kV T/F-03 tripped at 18:16 hrs from both sides without any indication. Same time 33kV B/S C/B-02 tripped due to operation of E/F protection causing 33kV B/S-03 to be dead. 33kV B/S-03 normalized via B/S C/B-02 at 19:21 hrs. Habarana 132/33 kV T/F-03 yet to be normalized.
- 4) Kolonnawa 132/33kV T/F-04 tripped at 00:47hrs (on 05.04.2023) from 33kV side only along with feeder 17 and 33kV B/S CB-01 causing 33kV b/S-03 to be dead. All affected equipment normalized at 01:55hrs except 33kV feeder 17.