

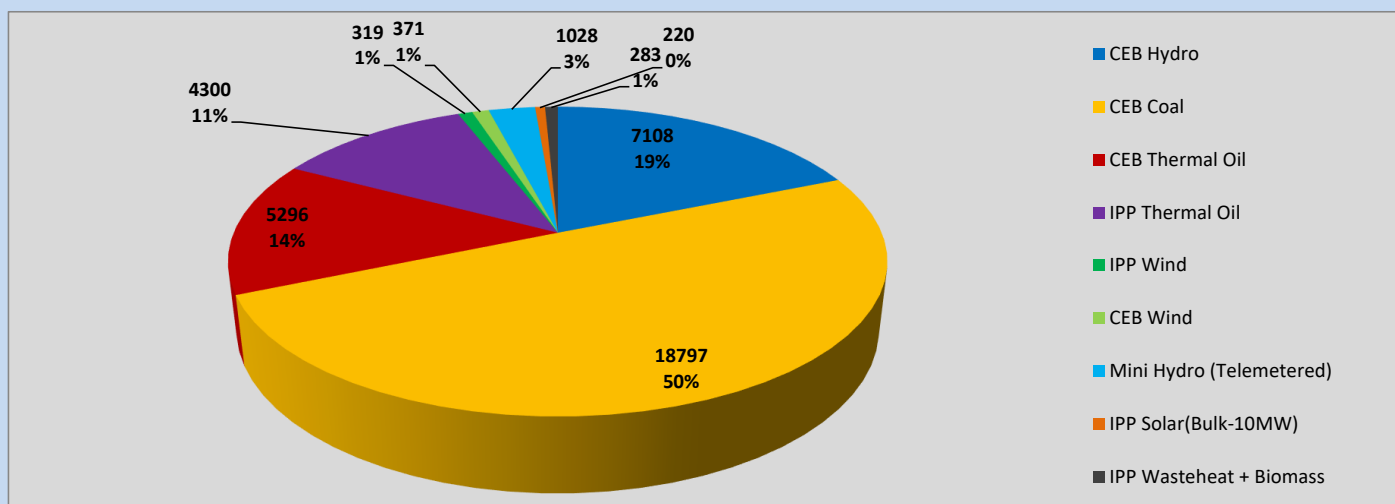
Generation and Reservoirs Statistics

May 2, 2023



PUBLIC UTILITIES COMMISSION OF SRI LANKA

Daily Generation Mix in MWh



Total Generation (Excluding estimated figures) =

37,722 MWh

Estimated figures of CEB generation report

Estimated unserved energy = 0.00 GWh

Estimated Mini Hydro (Non telemetered) = 2962 MWh

Estimated IPP Solar PV (Bulk 1-10MW) = 304 MWh

Estimated Solar Roof Top PV = 1920 MWh

Cumulative Dispatch

Following data excludes the contribution from roof top solar, non telemetered solar and mini hydro plants

For Current Month

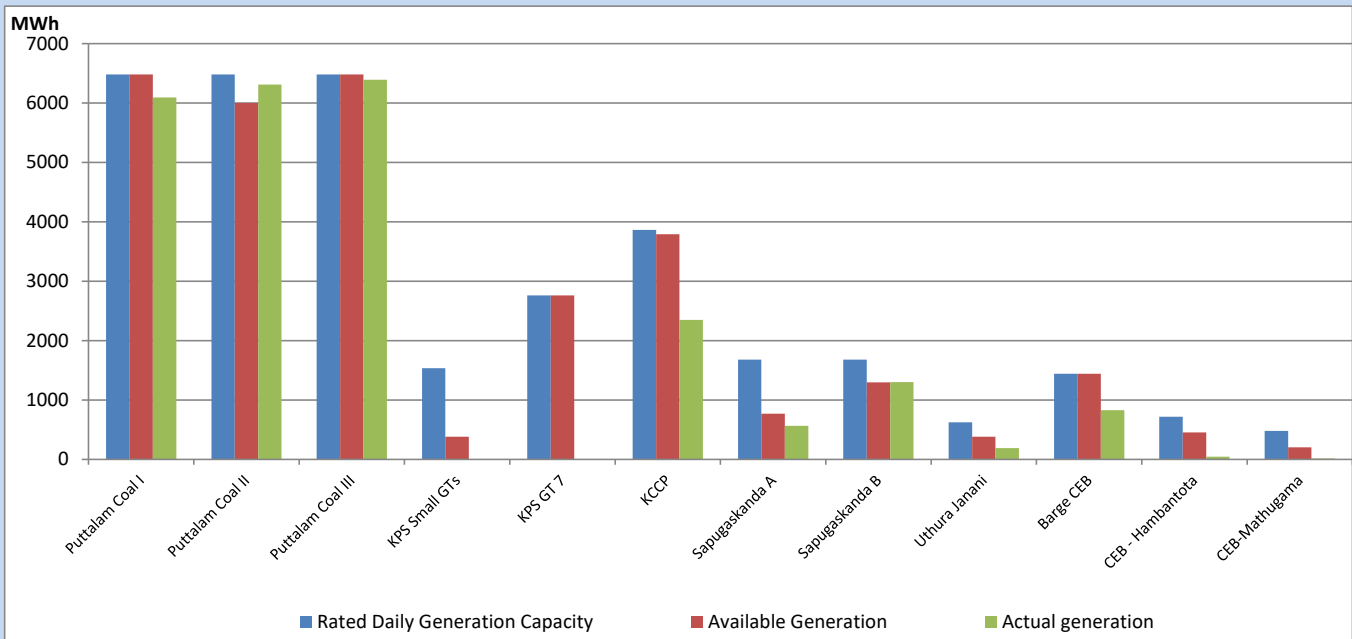
Category	Dispatch (GWh)	
CEB Hydro	14	19.86%
CEB Coal	38	55.16%
CEB Thermal Oil	8	11.96%
IPP Thermal	4	6.29%
SPP Wind	1	0.98%
CEB Wind	1	0.98%
Mini Hydro (Telemetered)	2	3.25%
IPP Solar (Bulk-10MW)	0	0.70%
IPP Wasteheat + BMP	1	0.82%
Total	68	

For Current Year

Category	Dispatch (GWh)	
CEB Hydro	1,215	26.29%
CEB Coal	2,025	43.80%
CEB Thermal Oil	663	14.35%
IPP Thermal	422	9.13%
SPP Wind	59	1.27%
CEB Wind	71	1.53%
Mini Hydro (Telemetered)	98	2.11%
IPP Solar (Bulk-10MW)	35	0.76%
IPP Wasteheat	35	0.77%
Total	4,622	

CEB owned Thermal Plant Dispatch

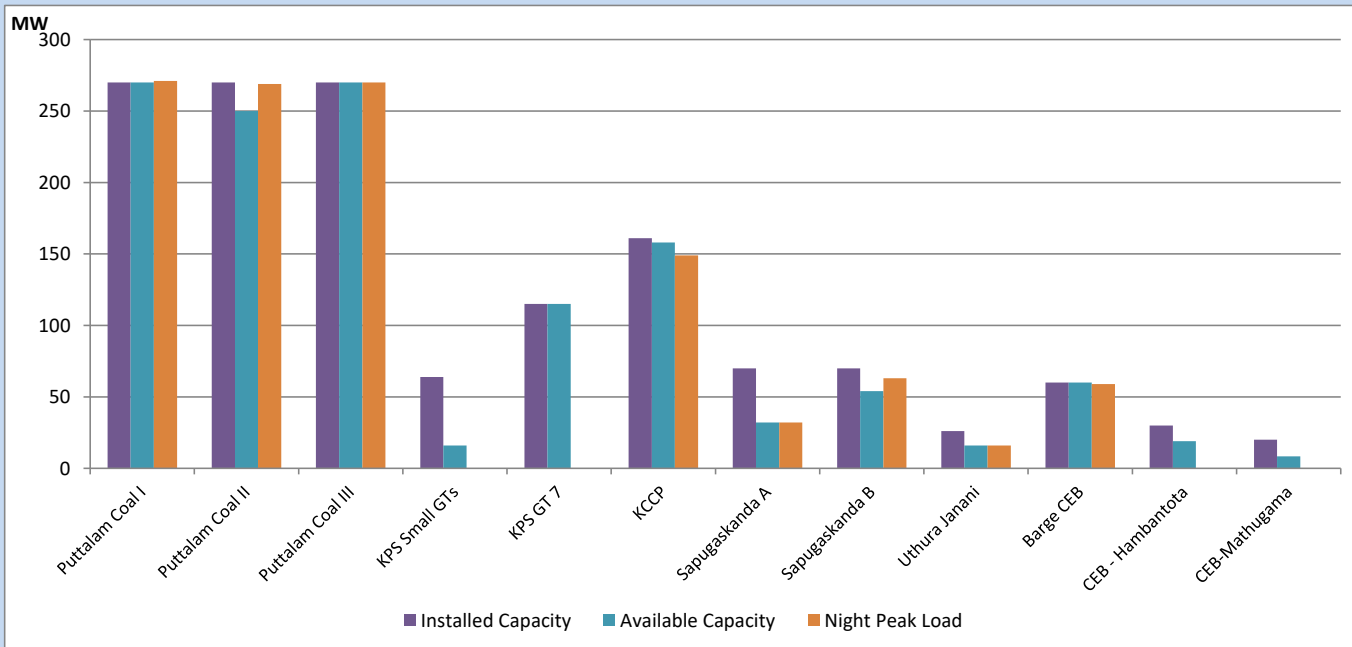
May 2, 2023



Available Generation is estimated based on plant availability at 6.00am on

May 3, 2023

CEB owned Thermal Plant Loading at the Night Peak

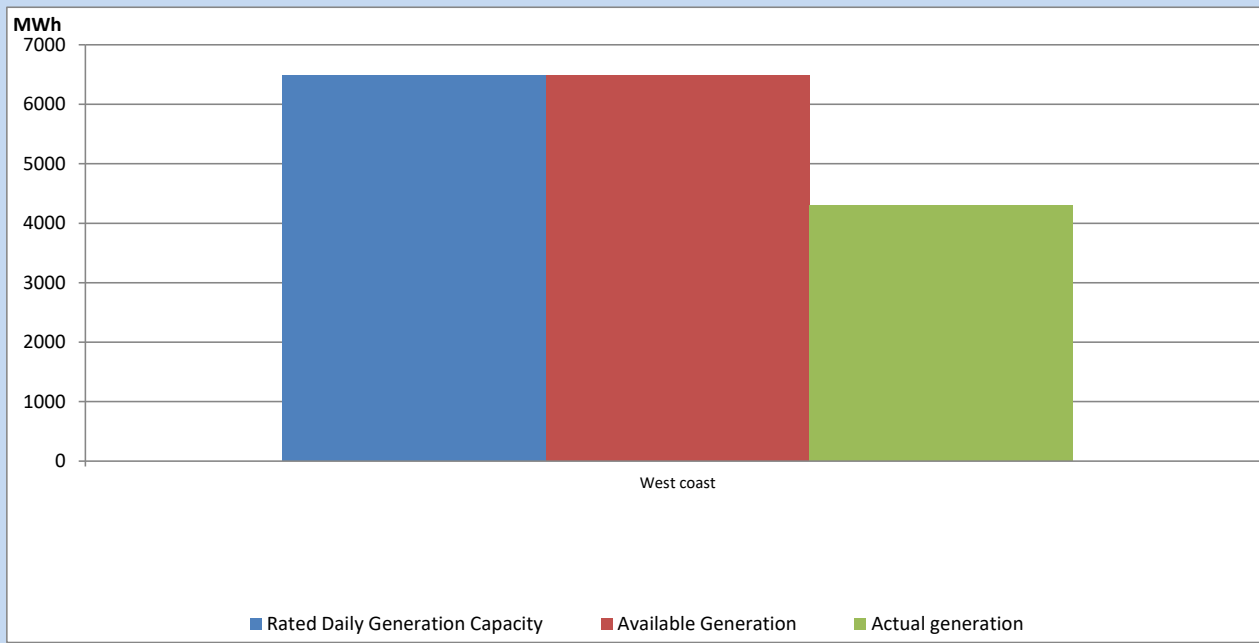


Note- Plant avilability is recorded at 6.00 am on

May 3, 2023

IPP owned Thermal Plant Dispatch

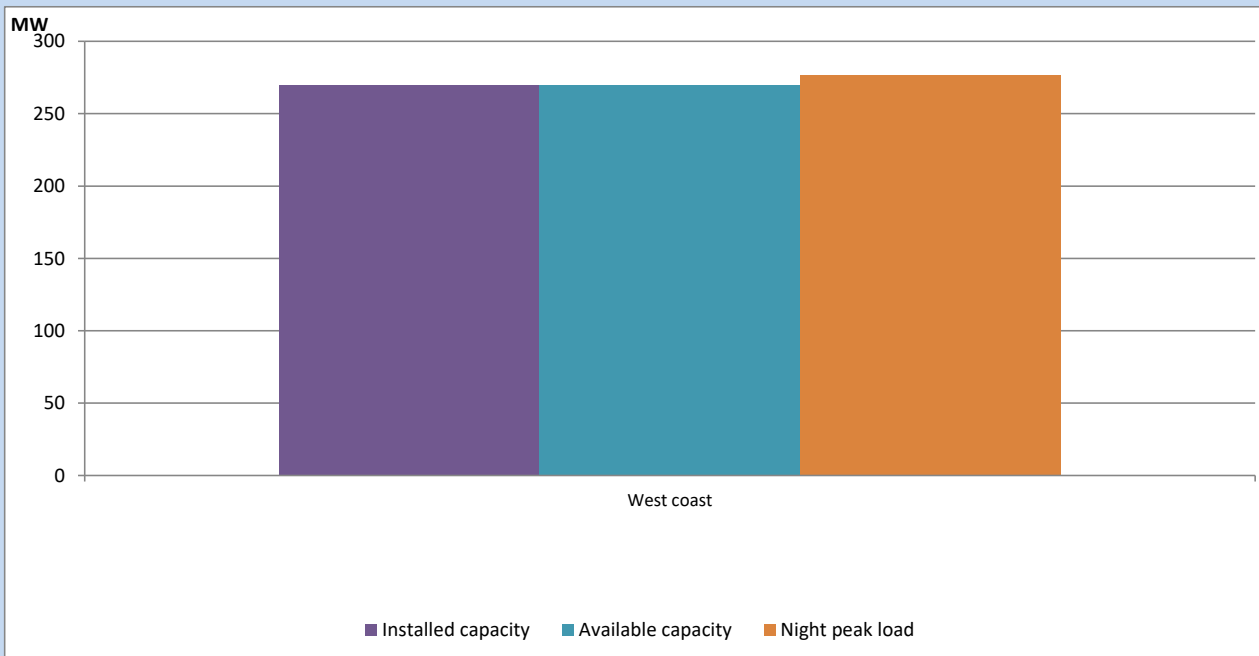
May 2, 2023



Available Generation is estimated based on plant availability at 6.00am on

May 3, 2023

IPP owned Thermal Plant Loading at the Night Peak

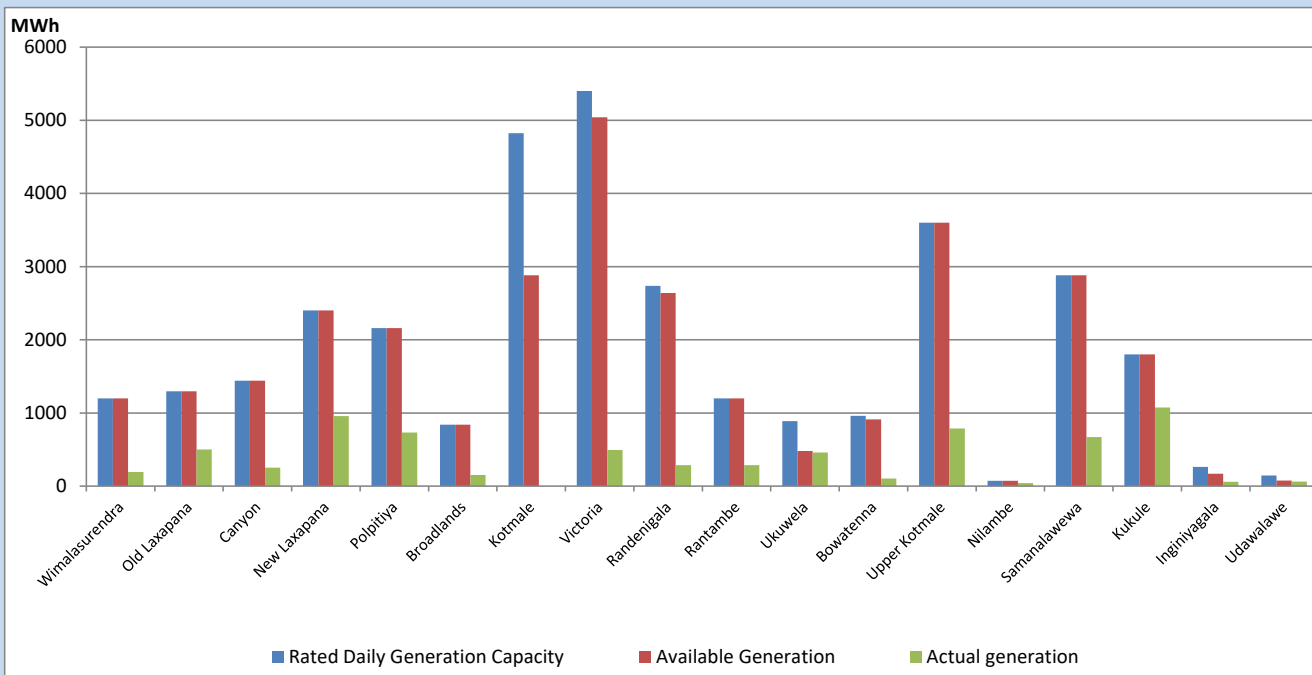


Note- Plant availability is recorded at 6.00 am on

May 3, 2023

Major Hydro Plant Dispatch

May 2, 2023

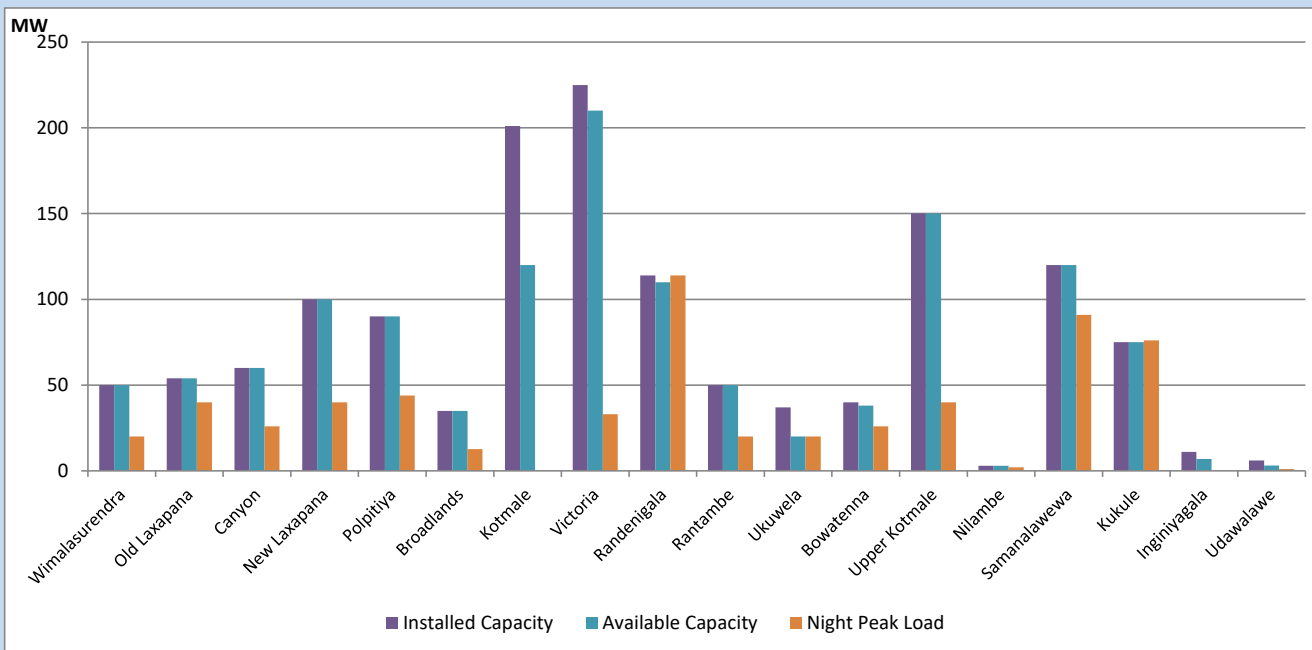


Available Generation is estimated based on plant availability at 6.00am on
Broadlands power plant is operating in the Commissioning Stage

May 3, 2023

Major Hydro Plant Loading at Night Peak

May 2, 2023



Note- Plant availability is recorded at 6.00 am on
Broadlands power plant is operating in the Commissioning Stage

May 3, 2023

Summary of Major Plant performance

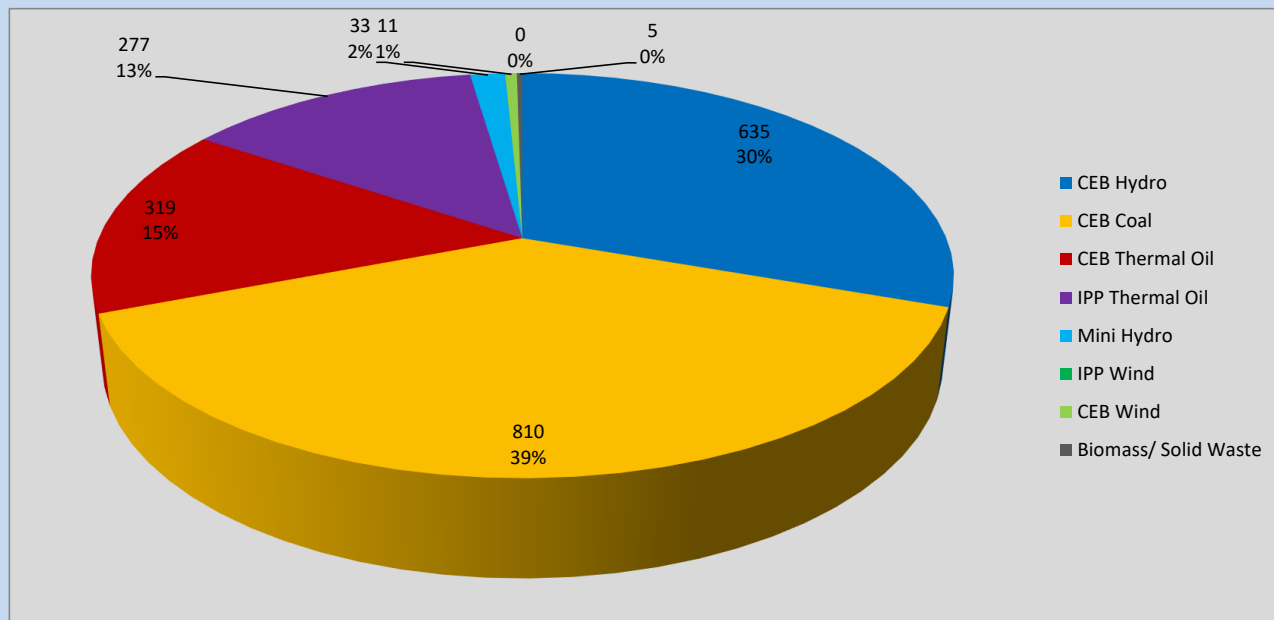
Plant	Installed Capacity	Plant Availability	Night peak Load	Plant Dispatch
	(MW)	(MW)	(MW)	(MWh)
Wimalasurendra	50	50	20	193
Old Laxapana	54	54	40	502
Canyon	60	60	26	251
New Laxapana	100	100	40	956
Polpitiya	90	90	44	732
Broadlands	35	35	13	153
Kotmale	201	120	0	0
Victoria	225	210	33	494
Randenigala	114	110	114	285
Rantambe	50	50	20	287
Ukuwela	37	20	20	461
Bowatenna	40	38	26	104
Upper Kotmale	150	150	40	786
Nilambe	3	3	2	42
Samanalawewa	120	120	91	669
Kukule	75	75	76	1,075
Inginiyagala	11	7	0	57
Udawalawe	6	3	1	61
Puttalam Coal I	270	270	271	6,095
Puttalam Coal II	270	250	269	6,309
Puttalam Coal III	270	270	270	6,393
KPS Small GTs	64	16	0	0
KPS GT 7	115	115	0	0
KCCP	161	158	149	2,350
Sapugaskanda A	70	32	32	565
Sapugaskanda B	70	54	63	1,302
Uthura Janani	26	16	16	190
Barge CEB	60	60	59	828
CEB-Hambantota	30	19	0	44
CEB-Mathugama	20	8	0	17
ACE Matara	24	0	0	0
Asia Power	50	0	0	0
Sojitz Kelanitissa	163	0	0	0
West Coast	270	270	277	4,300
Nothern Power	36	0	0	0
ACE Embilipitiya	93	0	0	0
Total	3,483	2,834	2,060	37,722

Plant availability is the availability recorded at 6 am on

May 3, 2023

Contribution to the Night Peak in MW

May 2, 2023

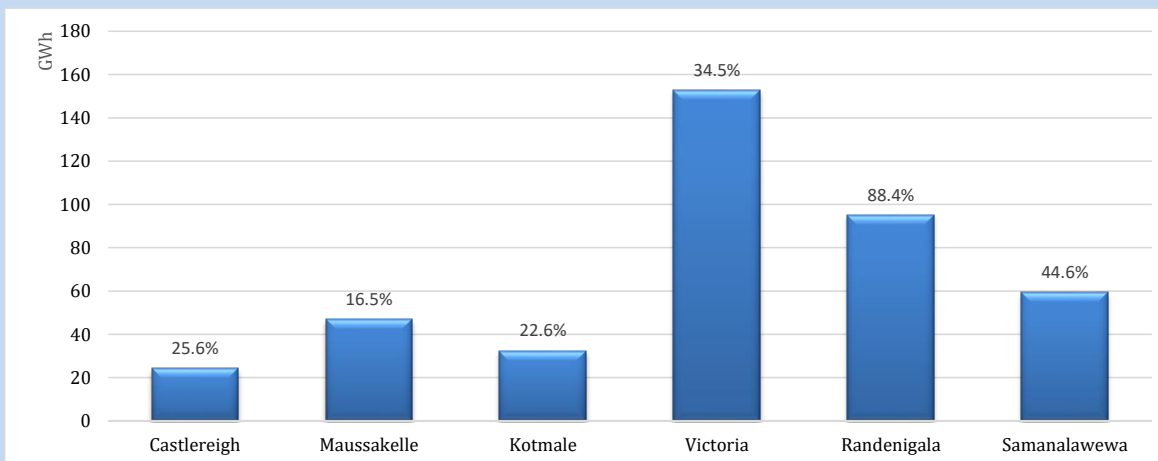


Night Peak*	2,089 MW
Day Peak	1,810 MW
Minimum Demand	995 MW

Above figures are excluding contribution from roof top solar, non telemetered solar and mini hydro plants

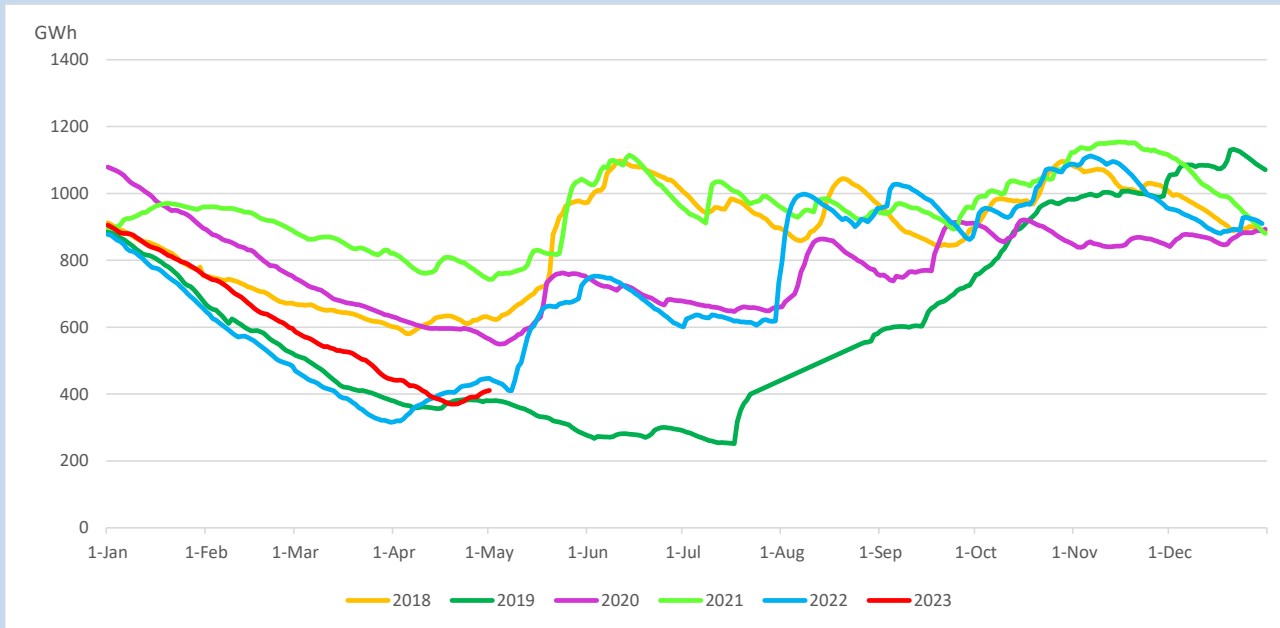
Reservoir Levels -

as at 06.00 Hr on May 3, 2023

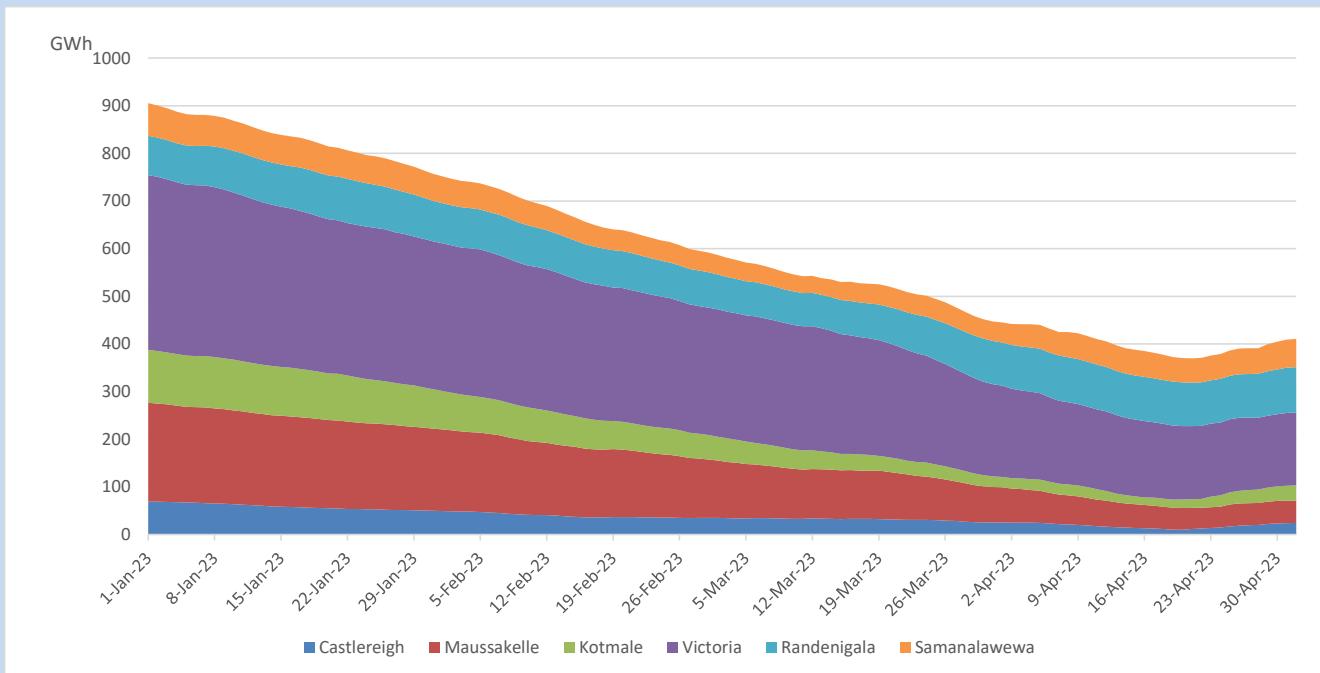


Total Reservoir Level	410.6 GWh
% of Total capacity	34.1%

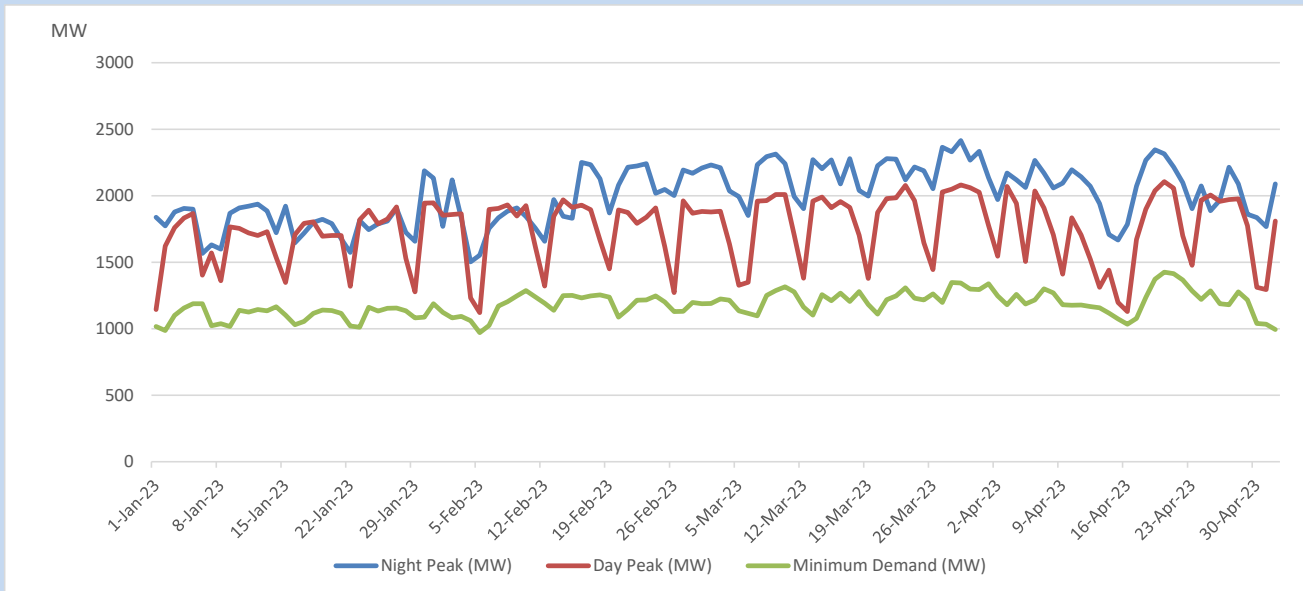
Comparison of Total Reservoir Storage Levels with Past Years



Variation of Major Hydro Reservoir Levels in the current year (GWh)



Variation of Demand during the current year

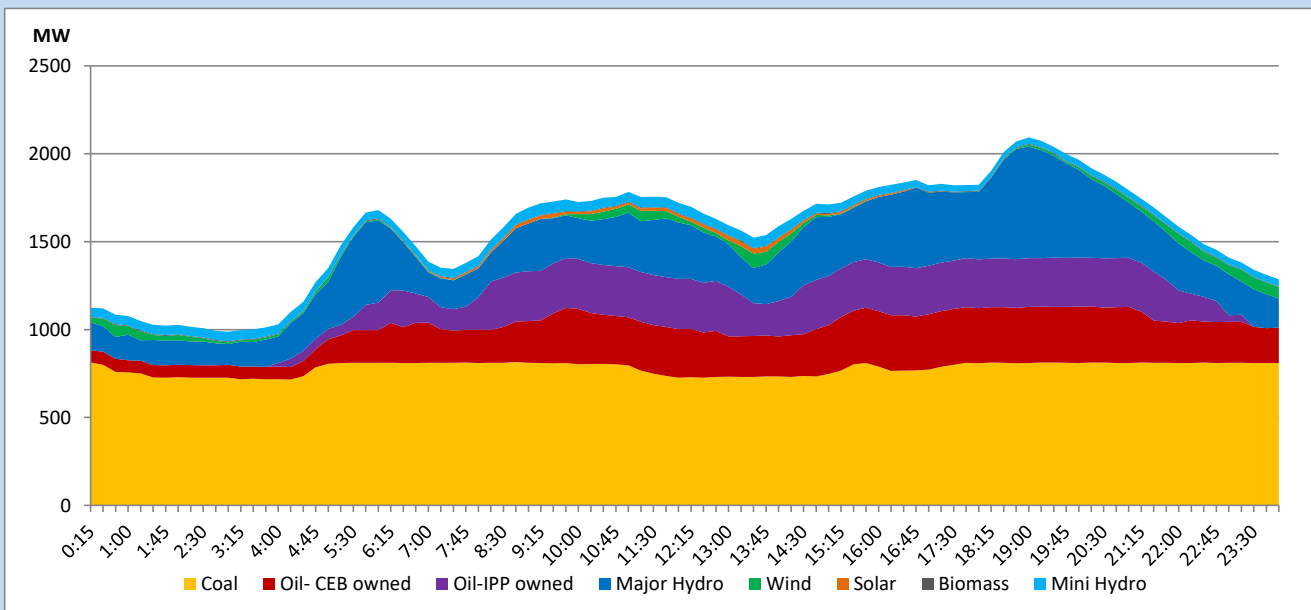


The above figures are excluding contribution from roof top solar, non telemetered solar and mini hydro plants

Daily Load Curve

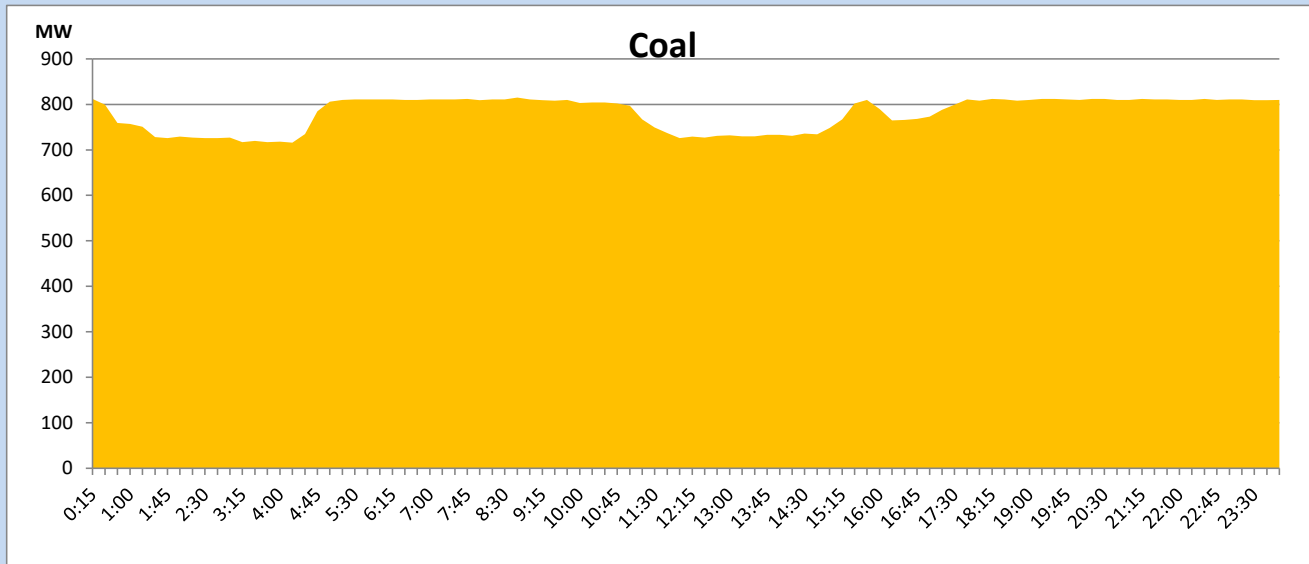
May 2, 2023

Solar and wind data is based on Telemetered Power Stations only



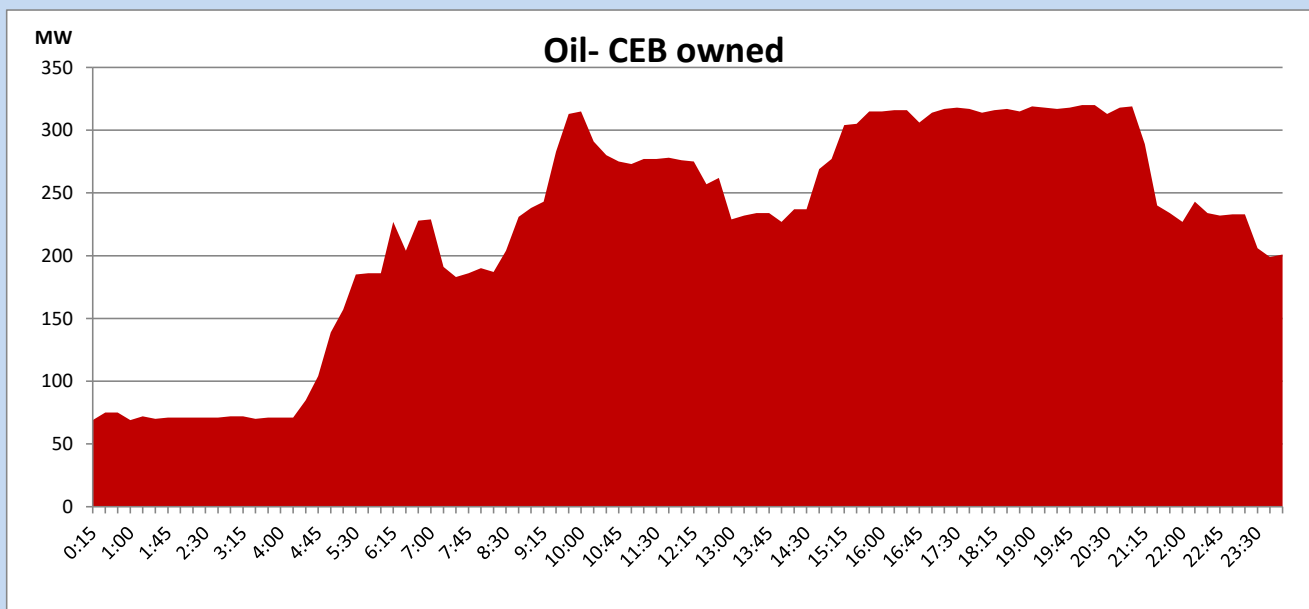
Coal Generation during

May 2, 2023



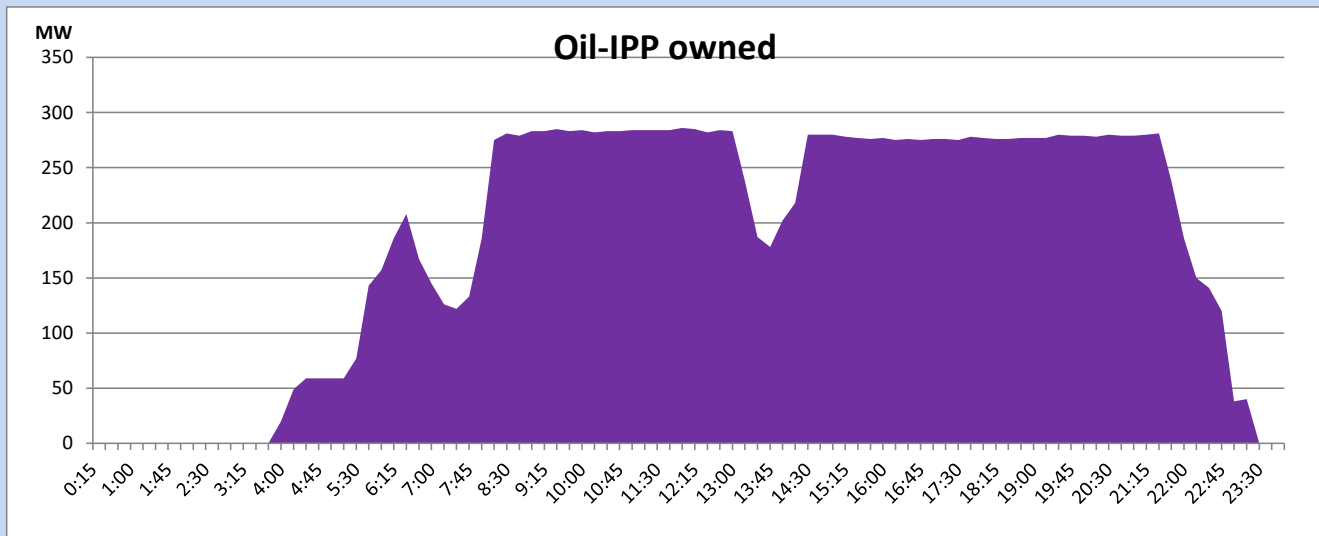
CEB Oil Plant Generation during

May 2, 2023



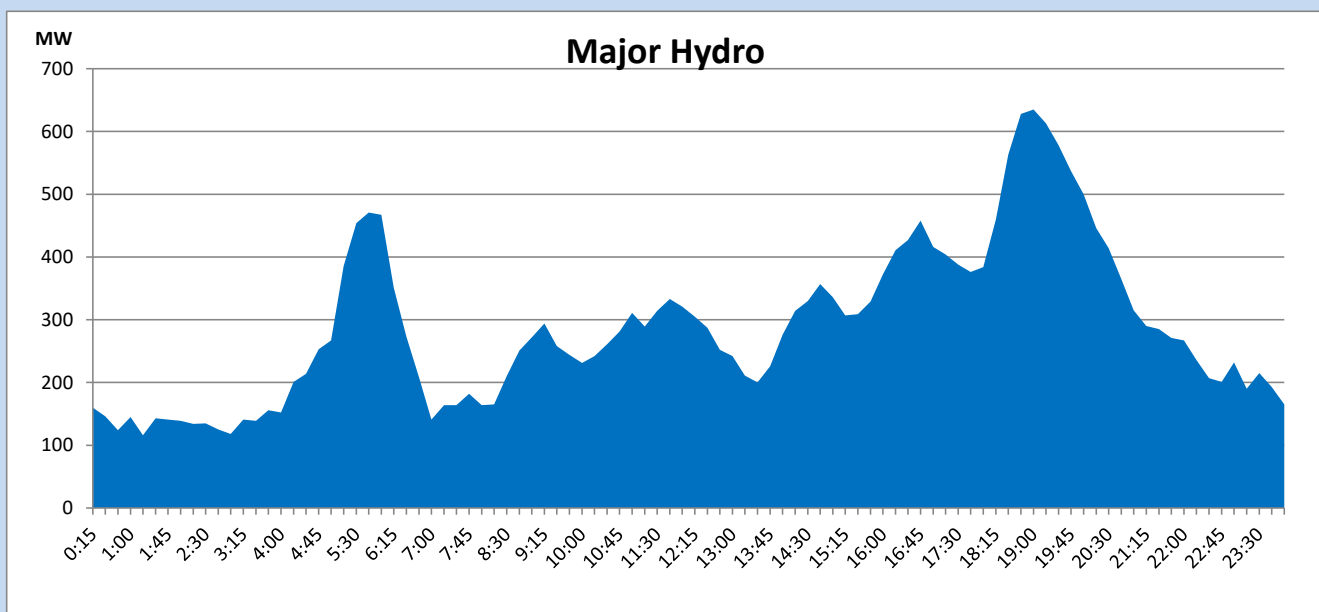
IPP Oil Plant Generation during

May 2, 2023



Major Hydro Generation during

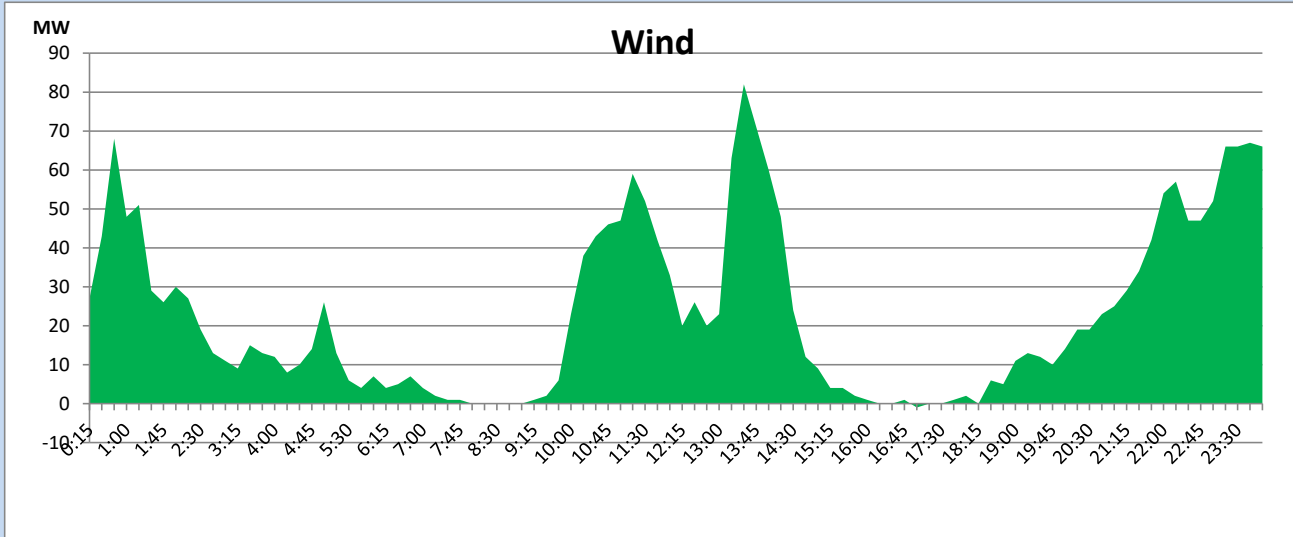
May 2, 2023



Wind Generation during

May 2, 2023

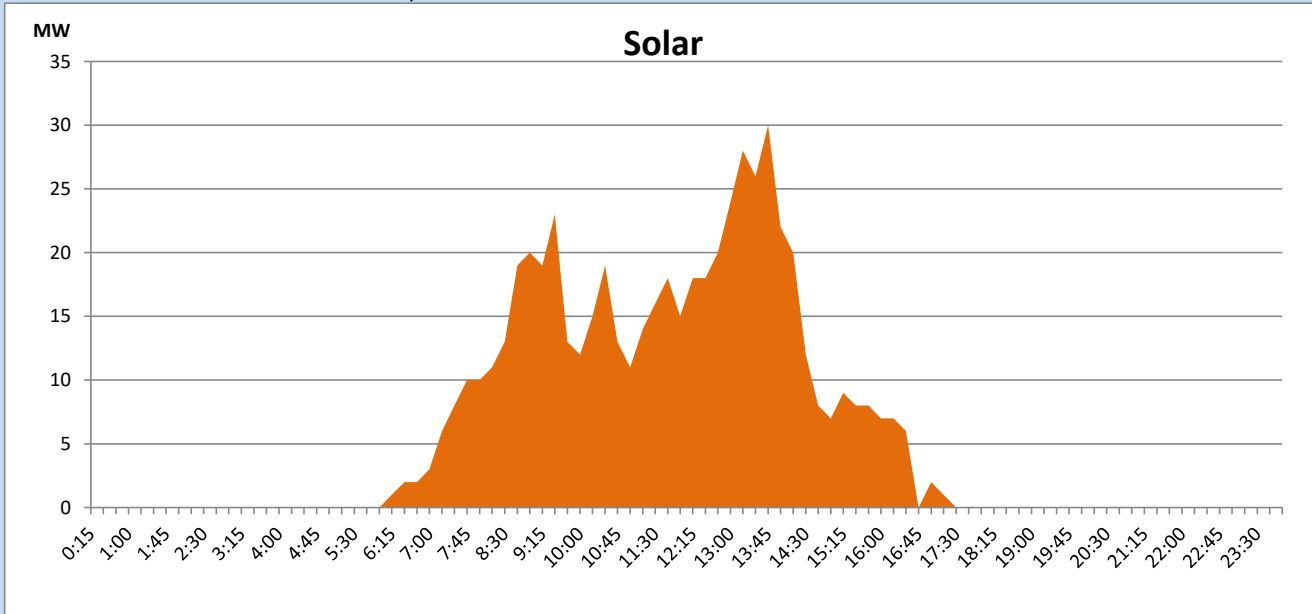
Based on Telemetered Power Stations only



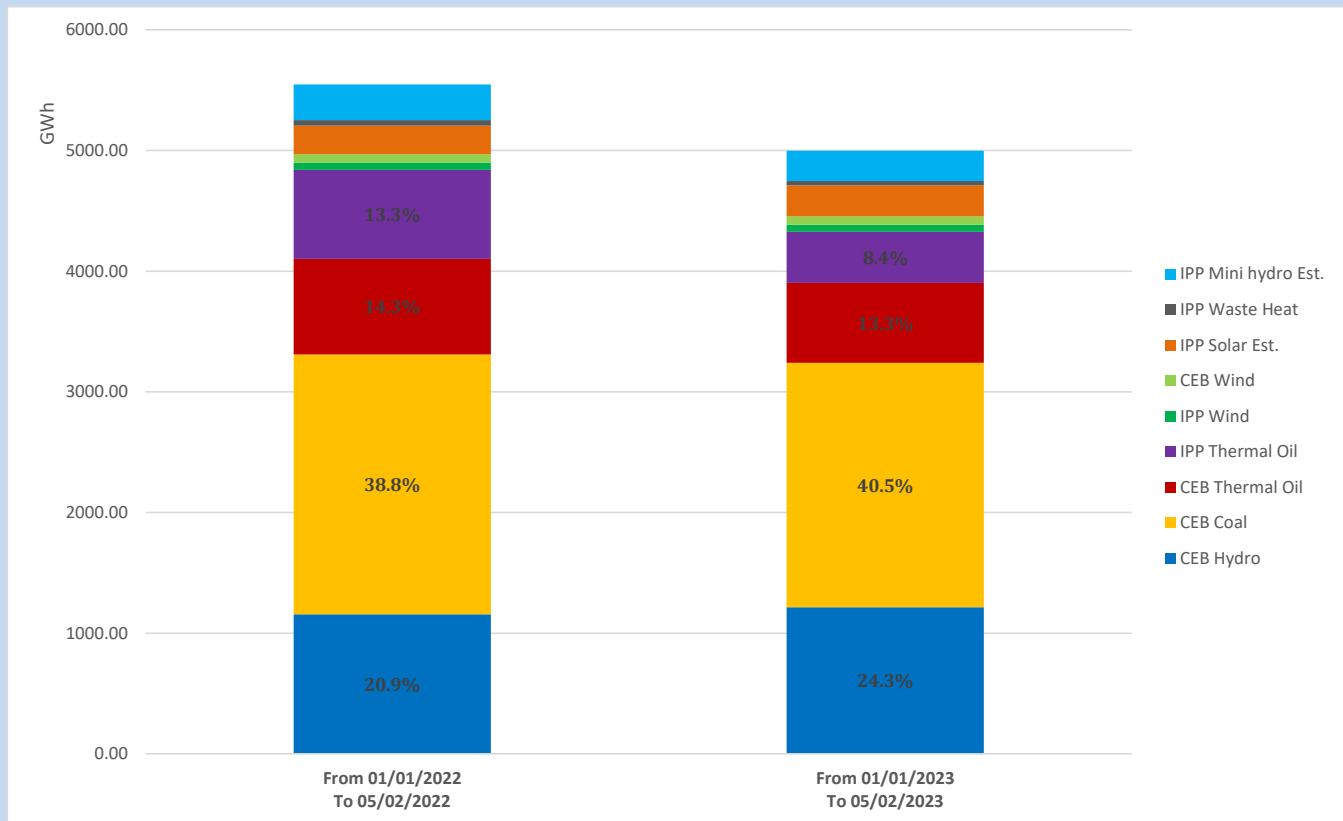
Solar Generation during

May 2, 2023

Based on Telemetered Power Stations only



Cumulative Dispatch Comparison with Last Year



The above figures are including contribution from roof top solar, non telemetered solar and mini hydro plants

Thermal Plant Fuel types

Power Station	Primary Fuel
CEB Thermal	
Sapugaskanda 1	Heavy Fuel
Sapugaskanda 2	Heavy Fuel
Kelanitissa Small Gas Turbines	Auto Diesel
GT 7 - Kelanitissa	Auto Diesel
Kelanitissa CCY	Naphtha or Diesel
Lakvijaya 1	Coal
Lakvijaya 2	Coal
Lakvijaya 3	Coal
Uthuru Janani	Heavy Fuel
Barge CEB	Heavy Fuel

Power Station	Primary Fuel
Private Thermal	
West Coast	Auto Diesel / Heavy Fuel

Major Incidents reported during the day

May 2, 2023

- 1) LVPS unit 01 de-loaded to 187MW (net) at 11:55hrs due to a breakdown of CW pump. The unit 01 reached 270MW (net) at 15:50hrs.
- 2) LVPS unit 02 de-loaded to 225MW (net) at 16:15hrs due to a malfunction of an intermittent valve. The unit 02 reached 270MW (net) at 15:50hrs.