

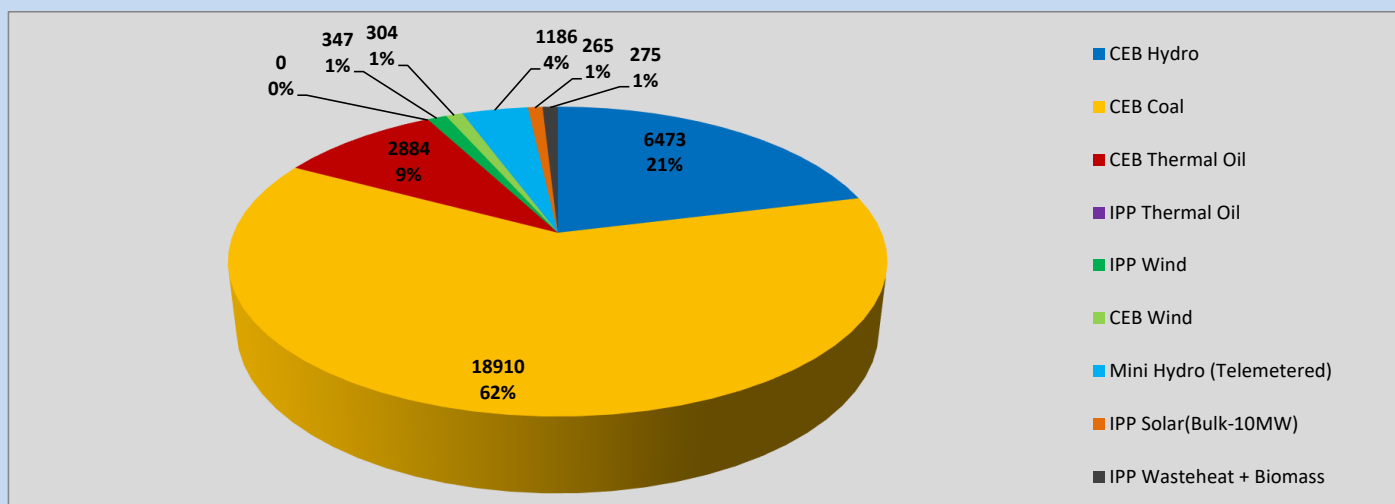
Generation and Reservoirs Statistics

May 1, 2023



PUBLIC UTILITIES COMMISSION OF SRI LANKA

Daily Generation Mix in MWh



Total Generation (Excluding estimated figures) =

30,644 MWh

Estimated figures of CEB generation report

Estimated unserved energy = 0.00 GWh

Estimated Mini Hydro (Non telemetered) = 2804 MWh

Estimated IPP Solar PV (Bulk 1-10MW) = 304 MWh

Estimated Solar Roof Top PV = 1920 MWh

Cumulative Dispatch

Following data excludes the contribution from roof top solar, non telemetered solar and mini hydro plants

For Current Month

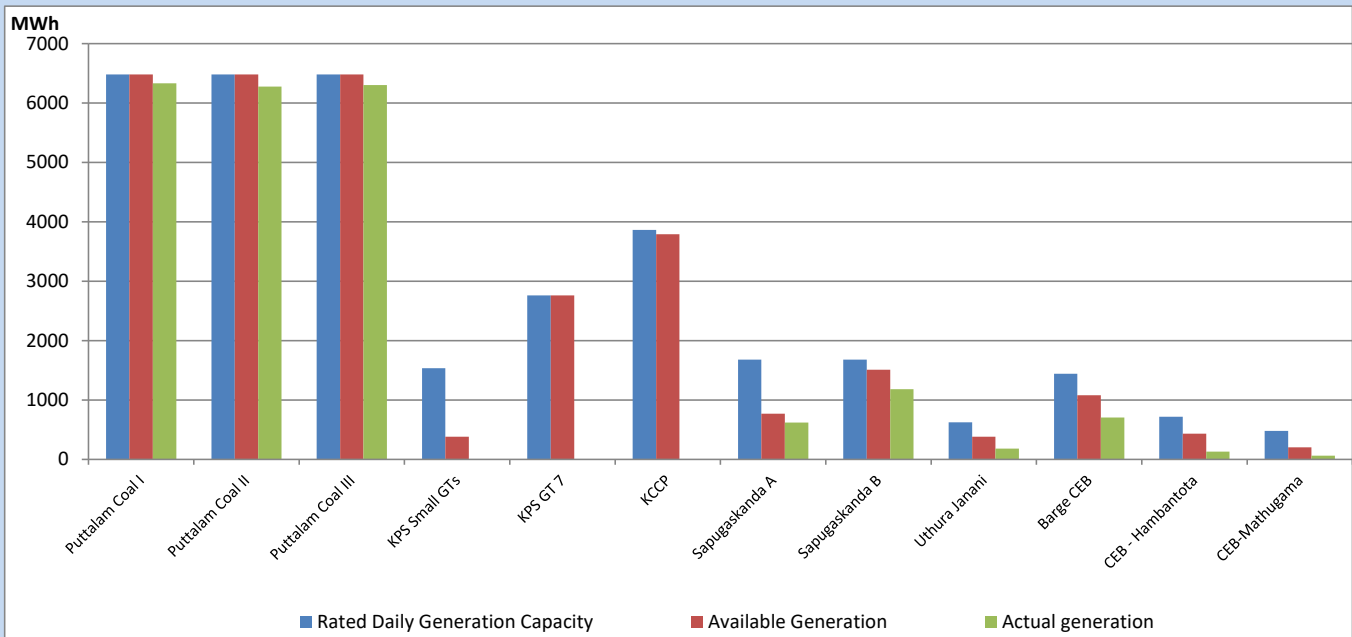
Category	Dispatch (GWh)	Percentage
CEB Hydro	6	21.12%
CEB Coal	19	61.72%
CEB Thermal Oil	3	9.40%
IPP Thermal	0	0.00%
SPP Wind	0	1.14%
CEB Wind	0	0.98%
Mini Hydro (Telemetered)	1	3.88%
IPP Solar(Bulk-10MW)	0	0.85%
IPP Wasteheat + BMP	0	0.91%
Total	31	

For Current Year

Category	Dispatch (GWh)	Percentage
CEB Hydro	1,208	26.35%
CEB Coal	2,006	43.75%
CEB Thermal Oil	658	14.35%
IPP Thermal	418	9.11%
SPP Wind	58	1.27%
CEB Wind	70	1.54%
Mini Hydro (Telemetered)	97	2.11%
IPP Solar(Bulk-10MW)	35	0.76%
IPP Wasteheat	35	0.77%
Total	4,585	

CEB owned Thermal Plant Dispatch

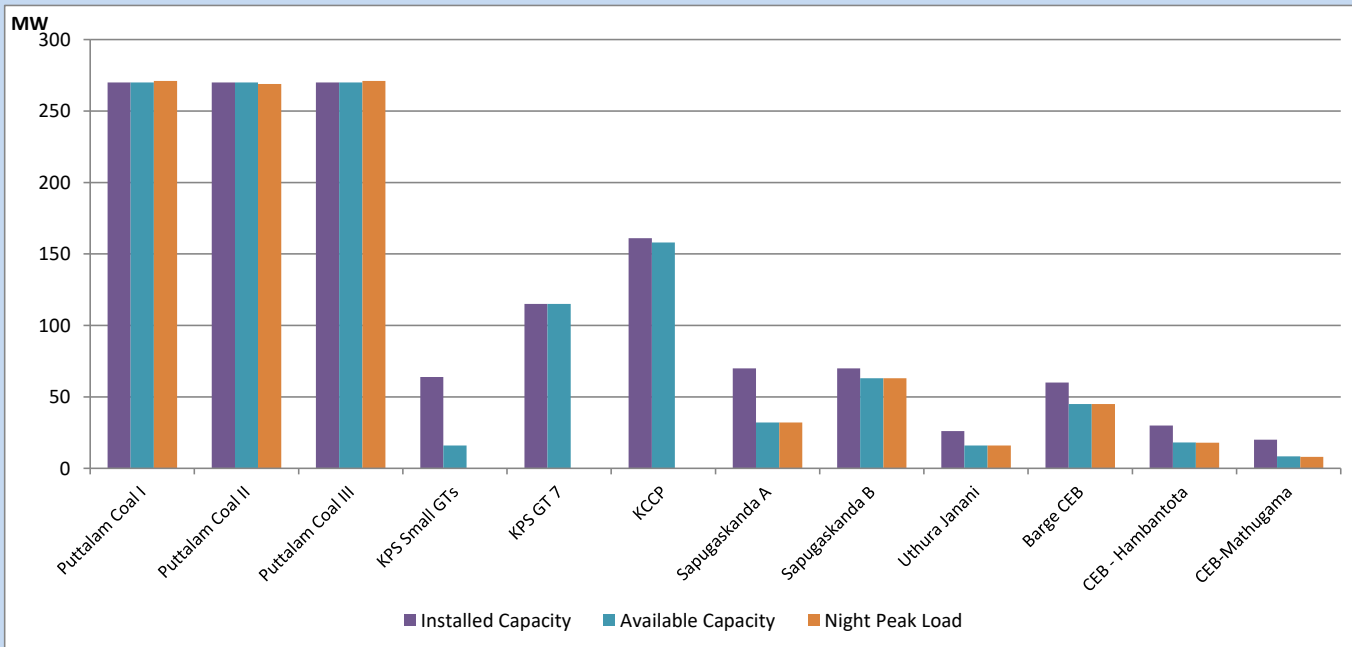
May 1, 2023



Available Generation is estimated based on plant availability at 6.00am on

May 2, 2023

CEB owned Thermal Plant Loading at the Night Peak

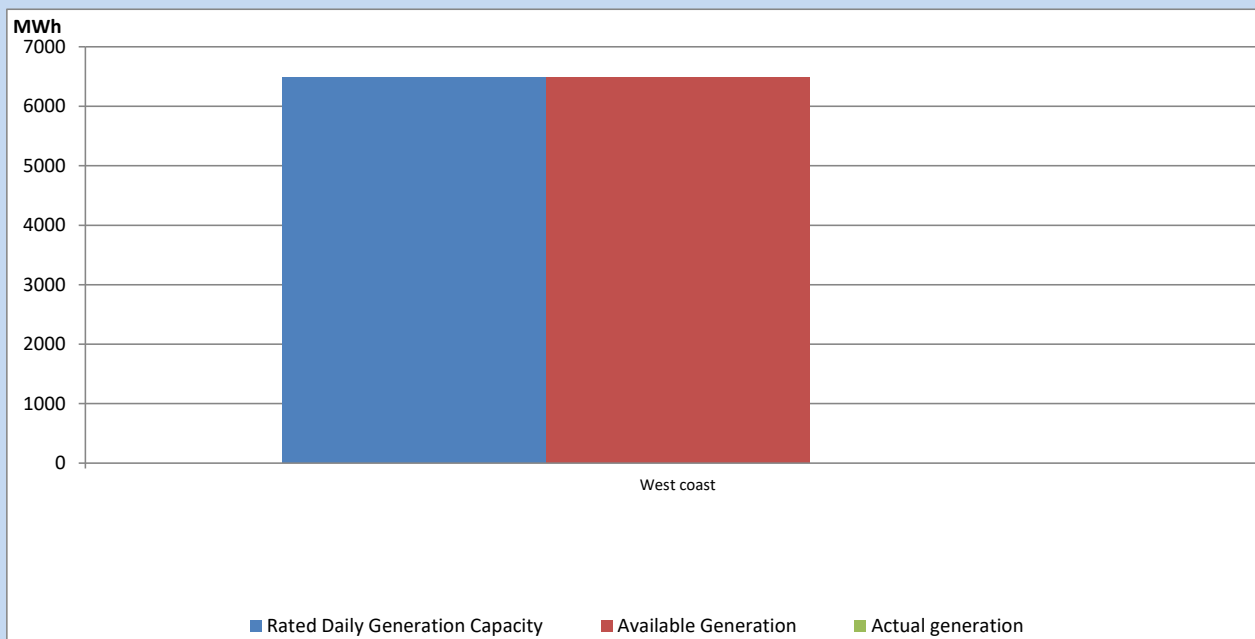


Note- Plant availability is recorded at 6.00 am on

May 2, 2023

IPP owned Thermal Plant Dispatch

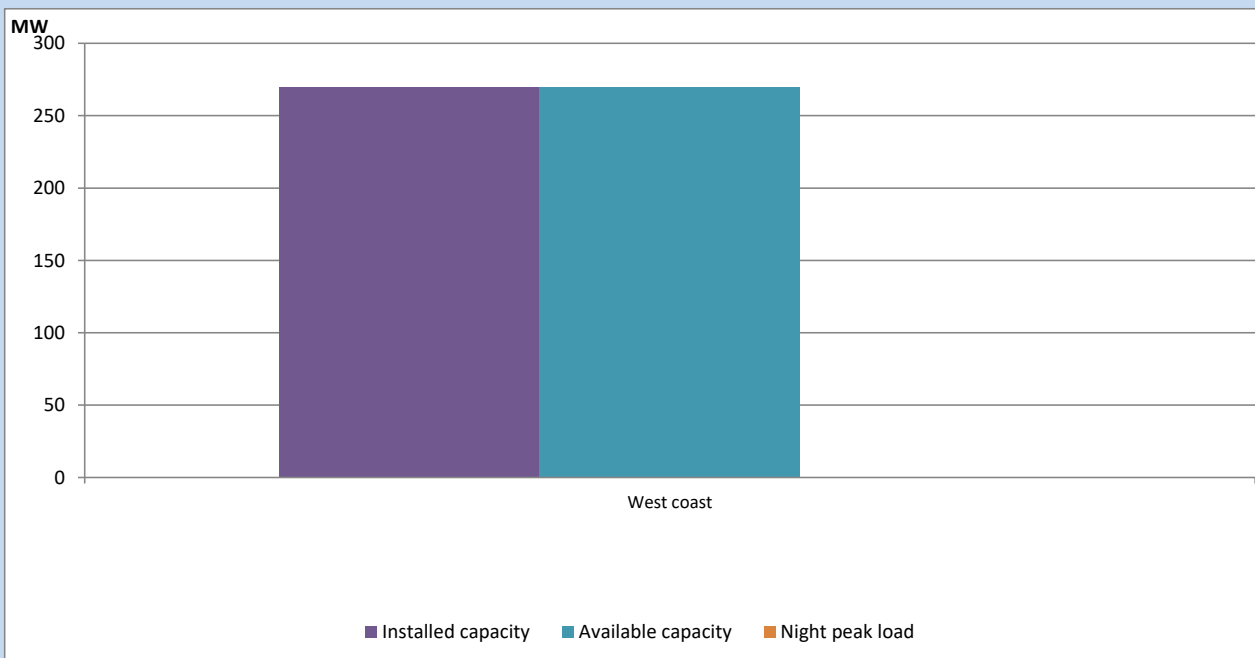
May 1, 2023



Available Generation is estimated based on plant availability at 6.00am on

May 2, 2023

IPP owned Thermal Plant Loading at the Night Peak

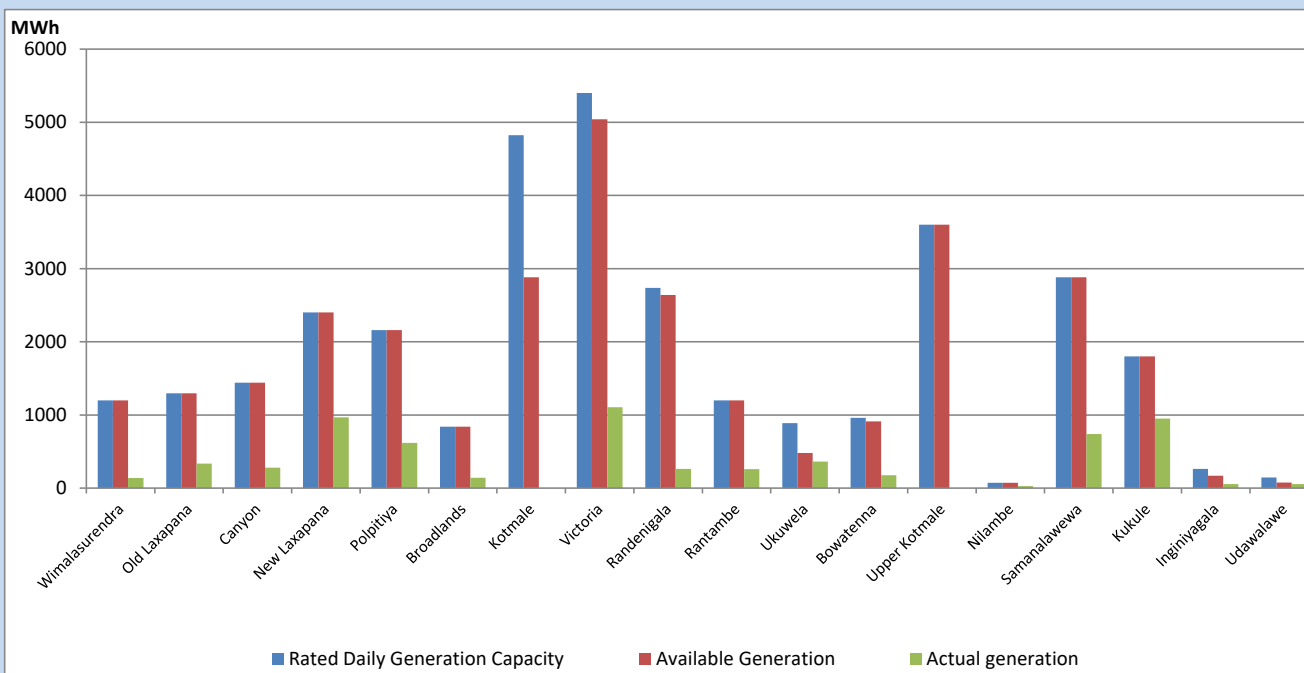


Note- Plant availability is recorded at 6.00 am on

May 2, 2023

Major Hydro Plant Dispatch

May 1, 2023

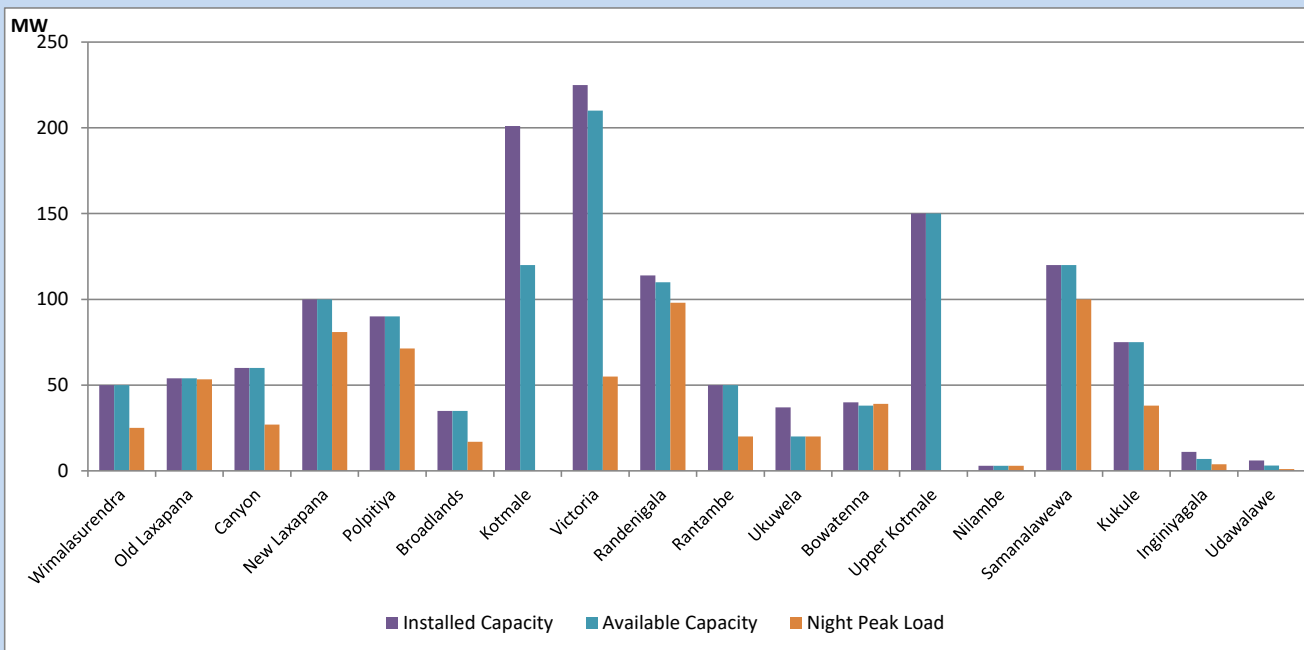


Available Generation is estimated based on plant availability at 6.00am on
Broadlands power plant is operating in the Commissioning Stage

May 2, 2023

Major Hydro Plant Loading at Night Peak

May 1, 2023



Note- Plant availability is recorded at 6.00 am on
Broadlands power plant is operating in the Commissioning Stage

May 2, 2023

Summary of Major Plant performance

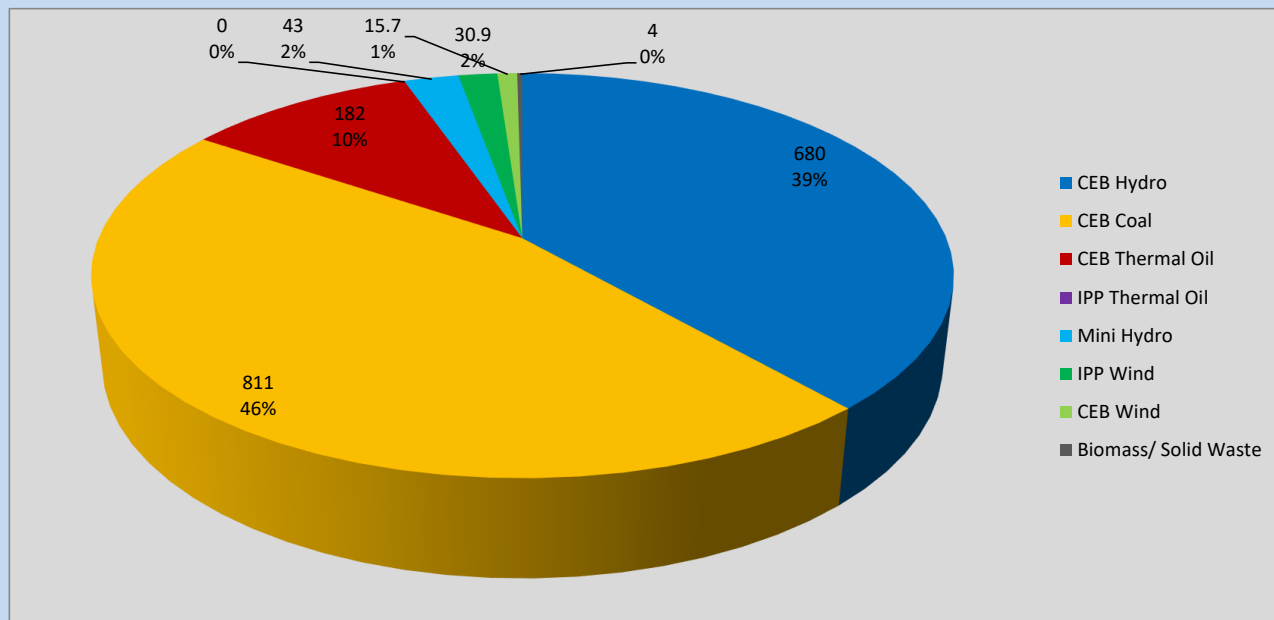
Plant	Installed Capacity	Plant Availability	Night peak Load	Plant Dispatch
	(MW)	(MW)	(MW)	(MWh)
Wimalasurendra	50	50	25	138
Old Laxapana	54	54	53	335
Canyon	60	60	27	281
New Laxapana	100	100	81	967
Polpitiya	90	90	71	620
Broadlands	35	35	17	140
Kotmale	201	120	0	0
Victoria	225	210	55	1,104
Randenigala	114	110	98	263
Rantambe	50	50	20	259
Ukuwela	37	20	20	363
Bowatenna	40	38	39	175
Upper Kotmale	150	150	0	0
Nilambe	3	3	3	29
Samanalawewa	120	120	100	738
Kukule	75	75	38	949
Inginiyagala	11	7	4	56
Udawalawe	6	3	1	56
Puttalam Coal I	270	270	271	6,332
Puttalam Coal II	270	270	269	6,276
Puttalam Coal III	270	270	271	6,302
KPS Small GTs	64	16	0	0
KPS GT 7	115	115	0	0
KCCP	161	158	0	0
Sapugaskanda A	70	32	32	622
Sapugaskanda B	70	63	63	1,182
Uthura Janani	26	16	16	183
Barge CEB	60	45	45	706
CEB-Hambantota	30	18	18	129
CEB-Mathugama	20	8	8	62
ACE Matara	24	0	0	0
Asia Power	50	0	0	0
Sojitz Kelanitissa	163	0	0	0
West Coast	270	270	0	0
Nothern Power	36	0	0	0
ACE Embilipitiya	93	0	0	0
Total	3,483	2,847	1,739	30,644

Plant availability is the availability recorded at 6 am on

May 2, 2023

Contribution to the Night Peak in MW

May 1, 2023

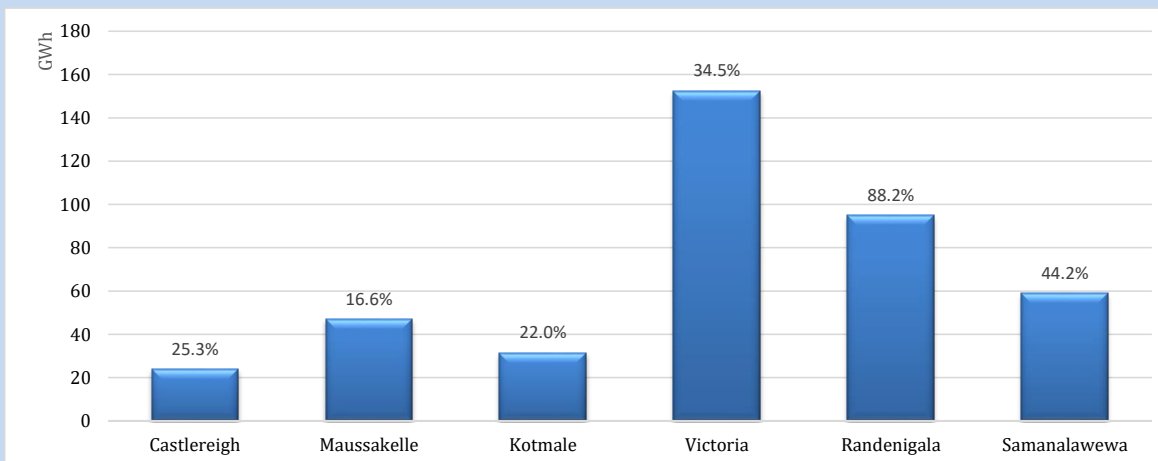


Night Peak*	1,767 MW
Day Peak	1,295 MW
Minimum Demand	1,033 MW

Above figures are excluding contribution from roof top solar, non telemetered solar and mini hydro plants

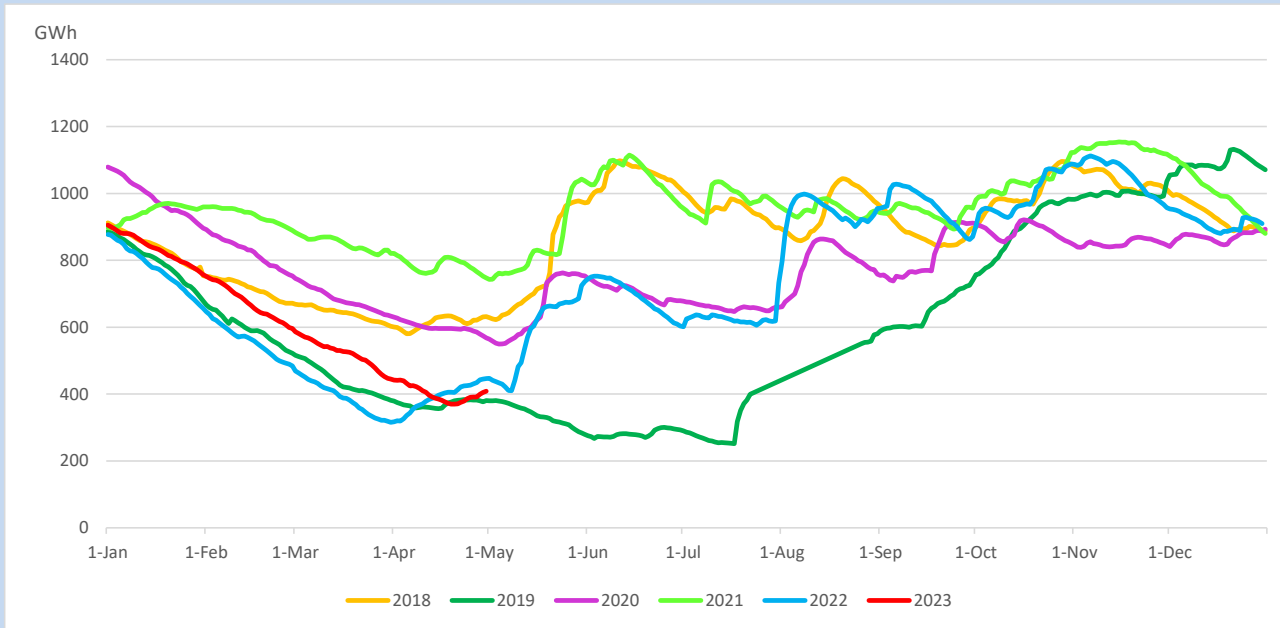
Reservoir Levels -

as at 06.00 Hr on May 2, 2023

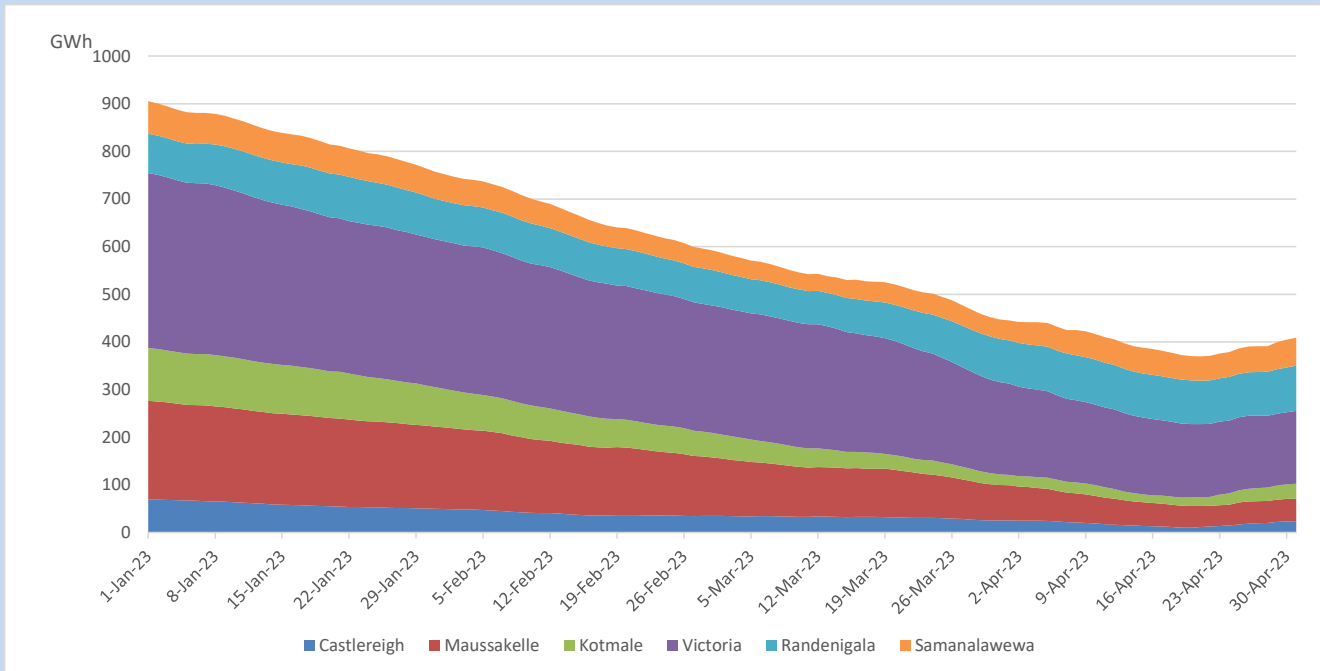


Total Reservoir Level	408.8 GWh
% of Total capacity	34.0%

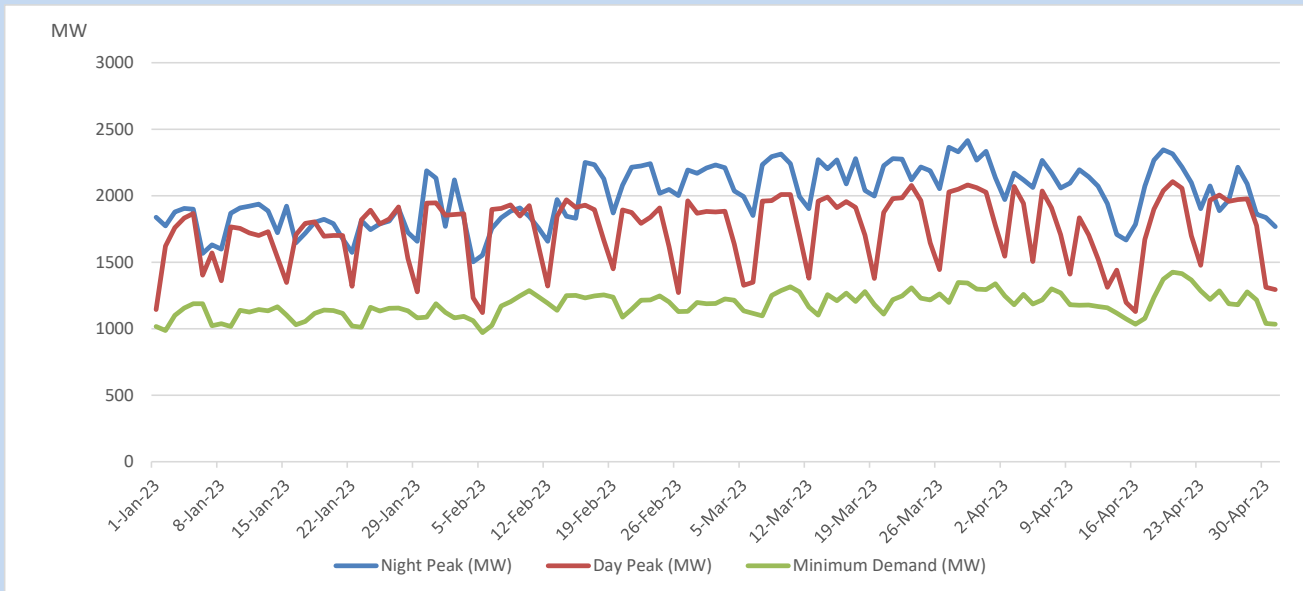
Comparison of Total Reservoir Storage Levels with Past Years



Variation of Major Hydro Reservoir Levels in the current year (GWh)



Variation of Demand during the current year

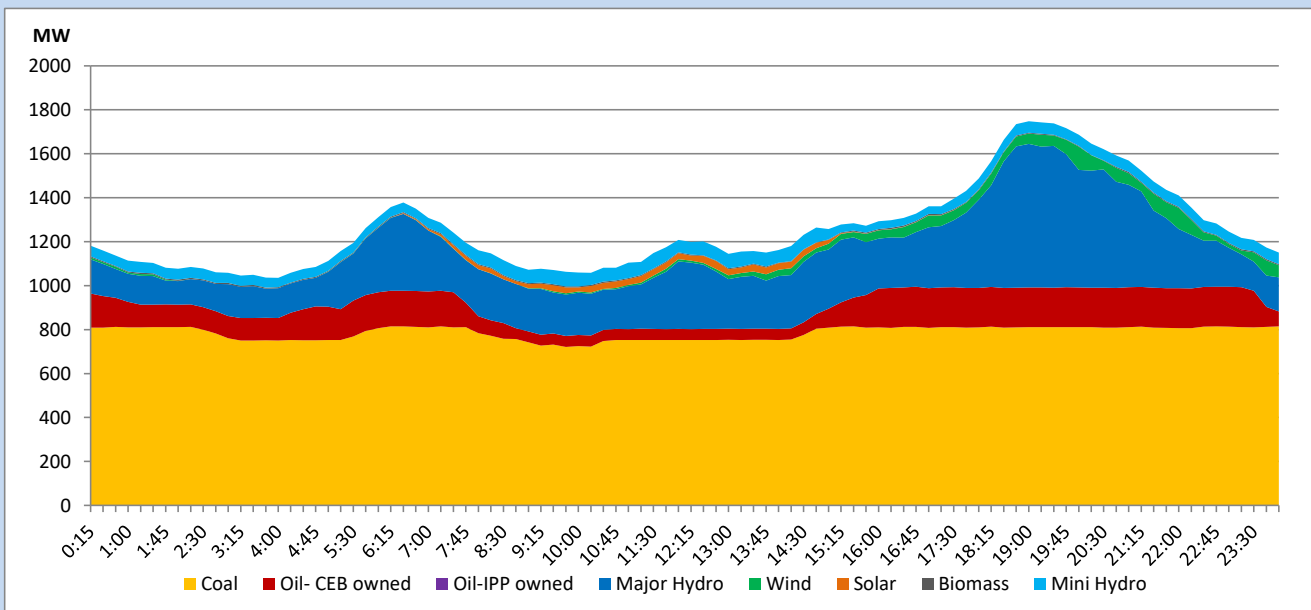


The above figures are excluding contribution from roof top solar, non telemetered solar and mini hydro plants

Daily Load Curve

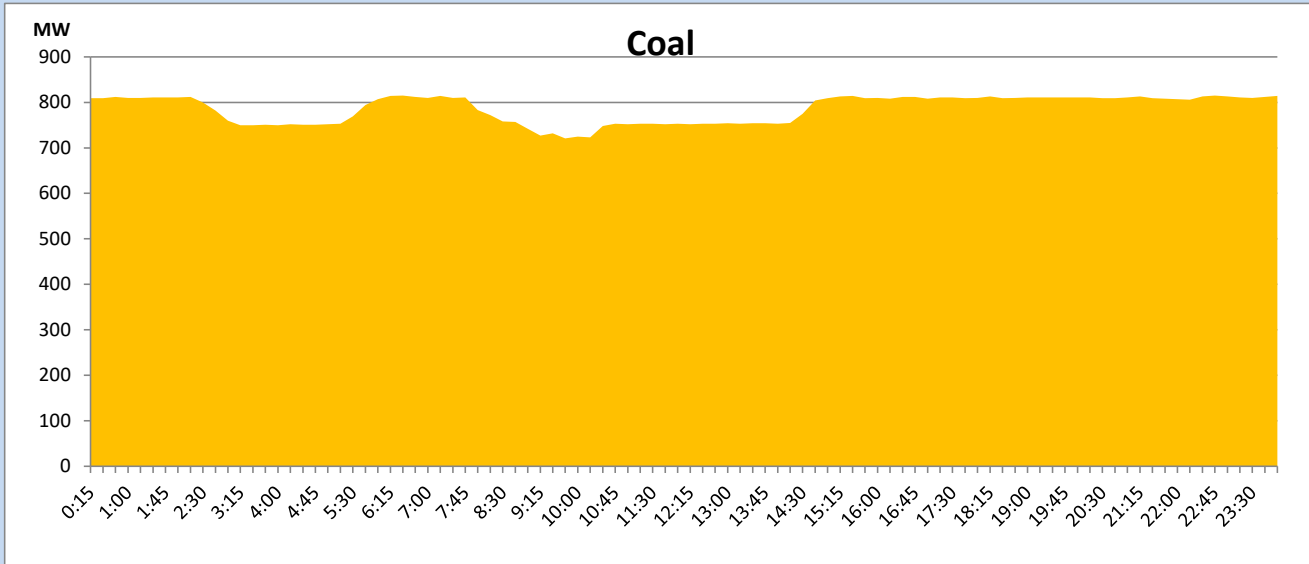
May 1, 2023

Solar and wind data is based on Telemetered Power Stations only



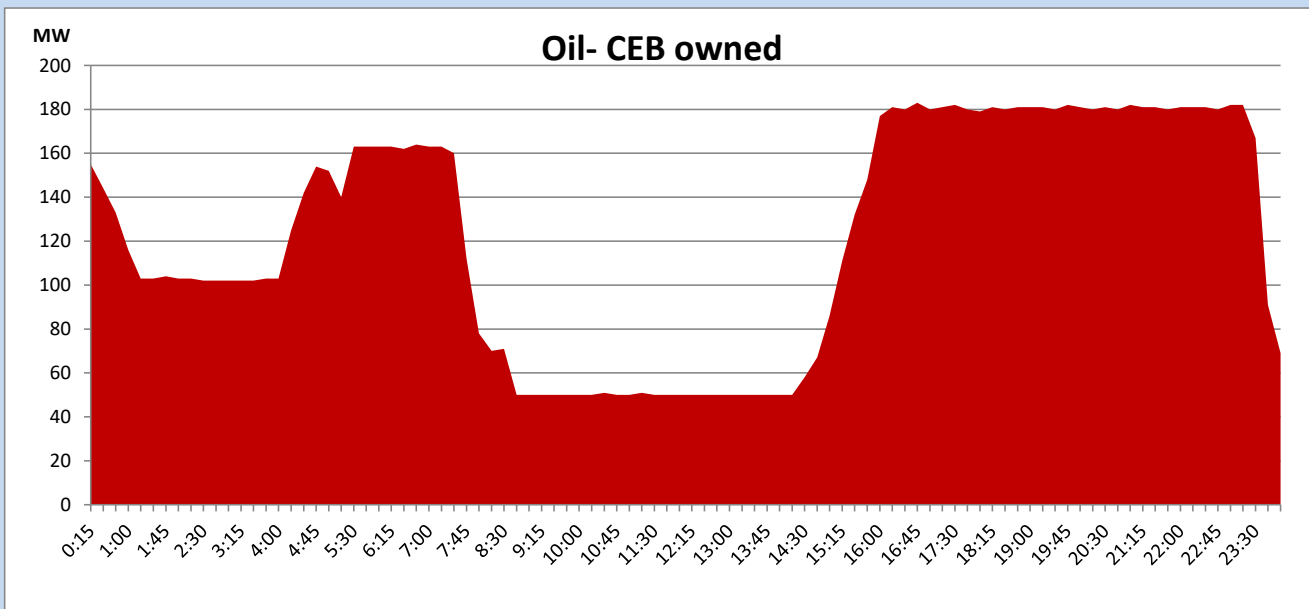
Coal Generation during

May 1, 2023



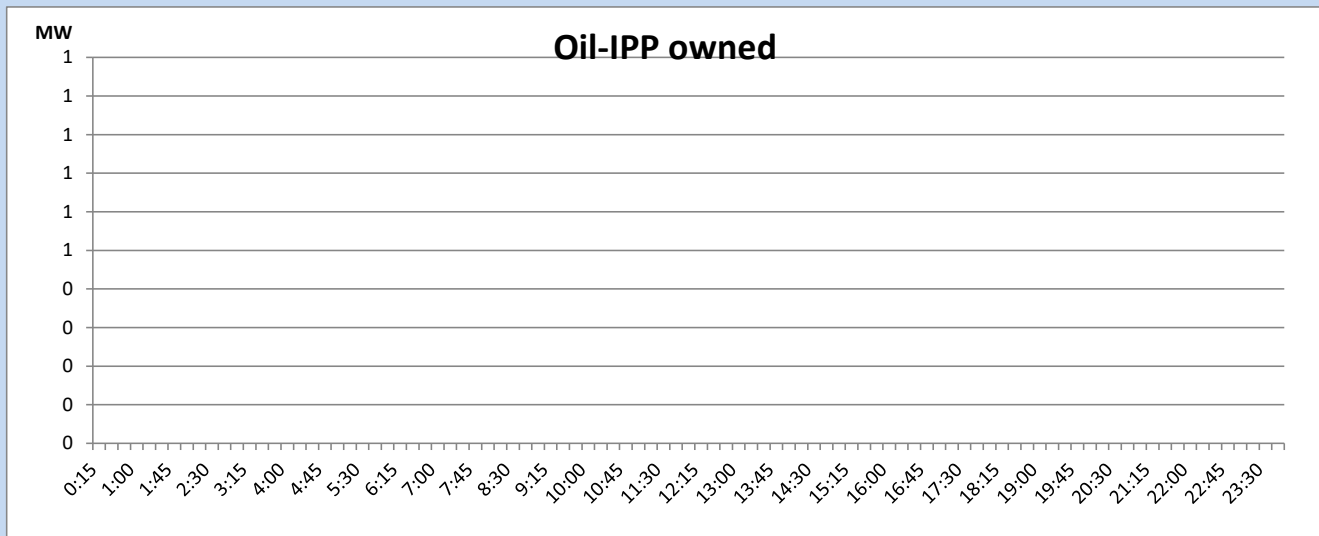
CEB Oil Plant Generation during

May 1, 2023



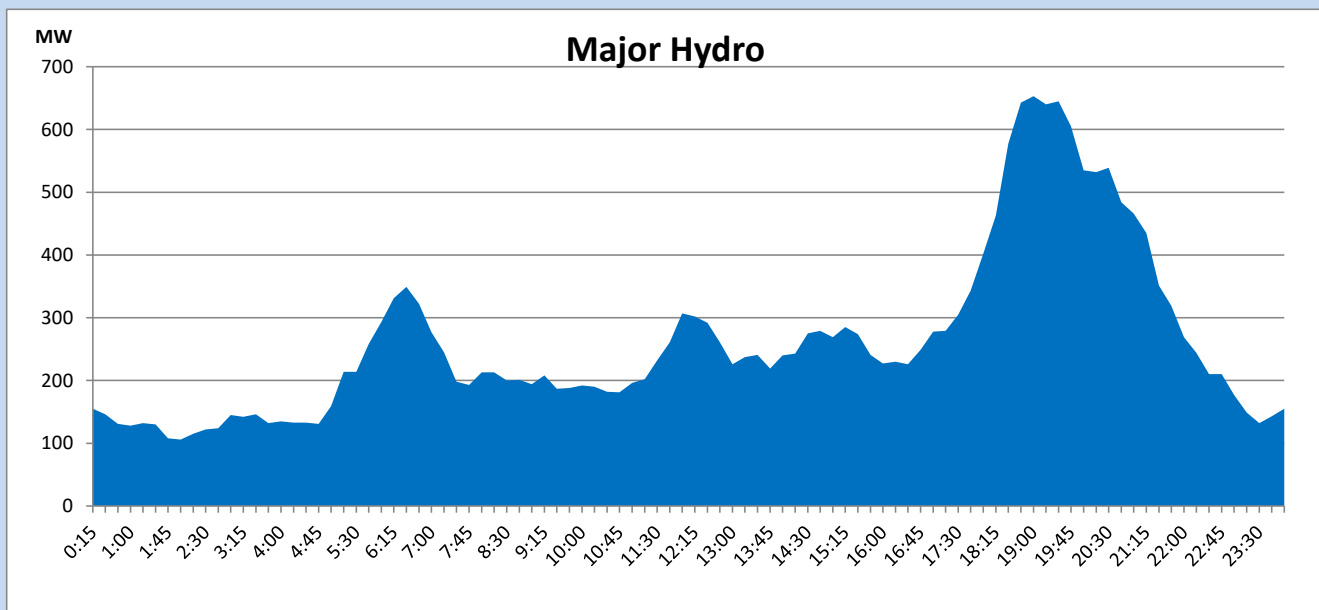
IPP Oil Plant Generation during

May 1, 2023



Major Hydro Generation during

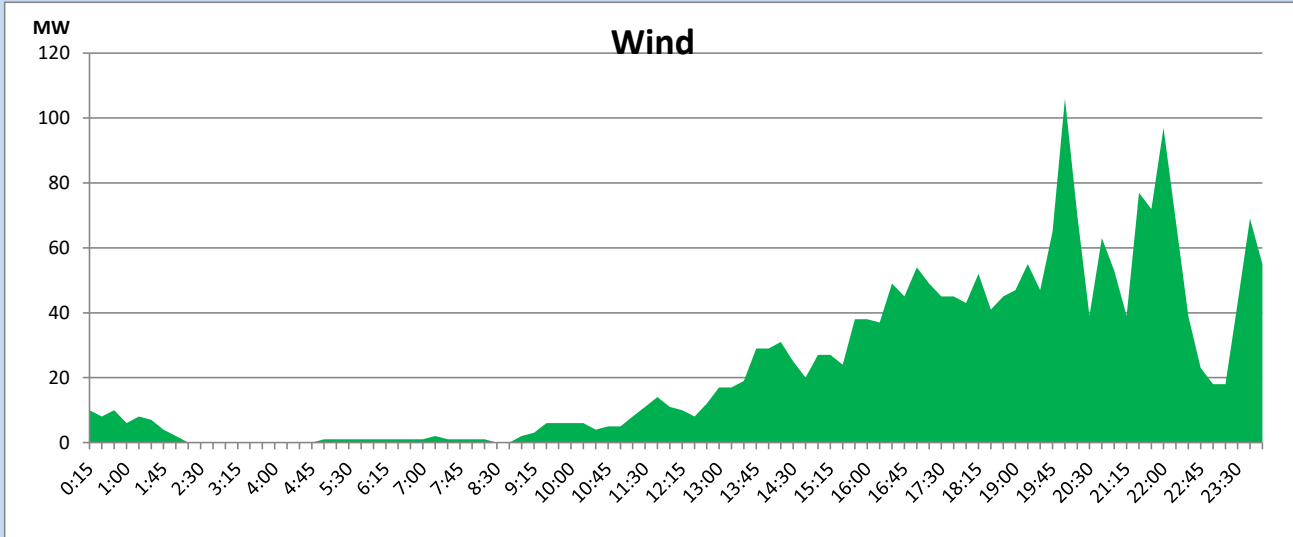
May 1, 2023



Wind Generation during

May 1, 2023

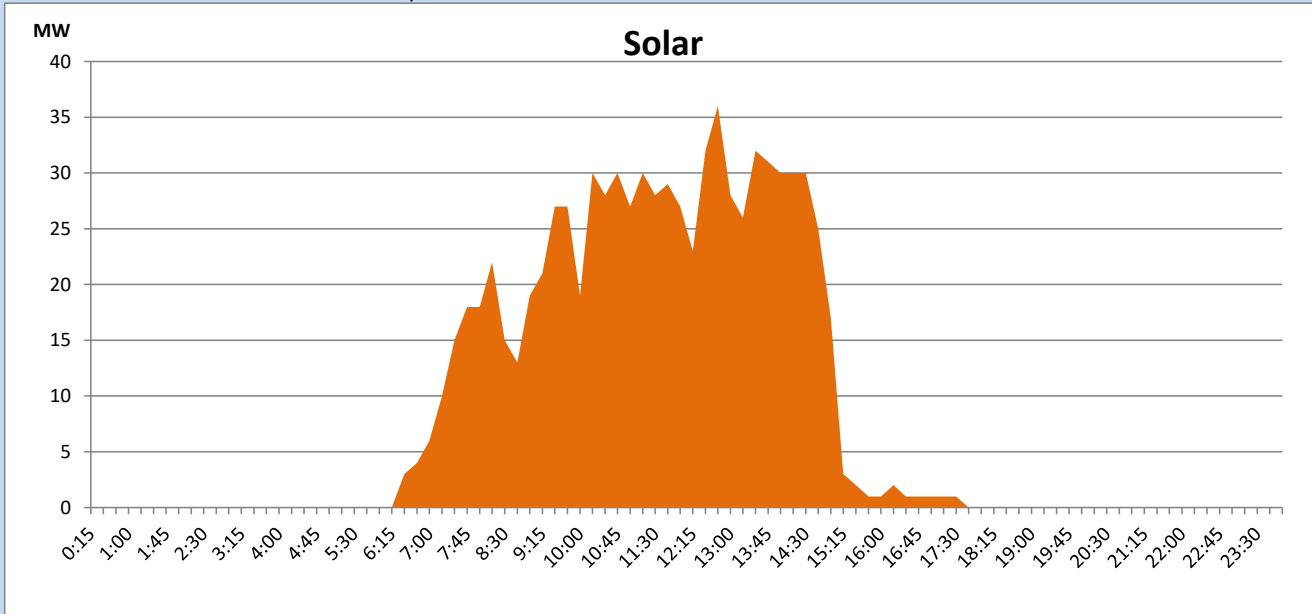
Based on Telemetered Power Stations only



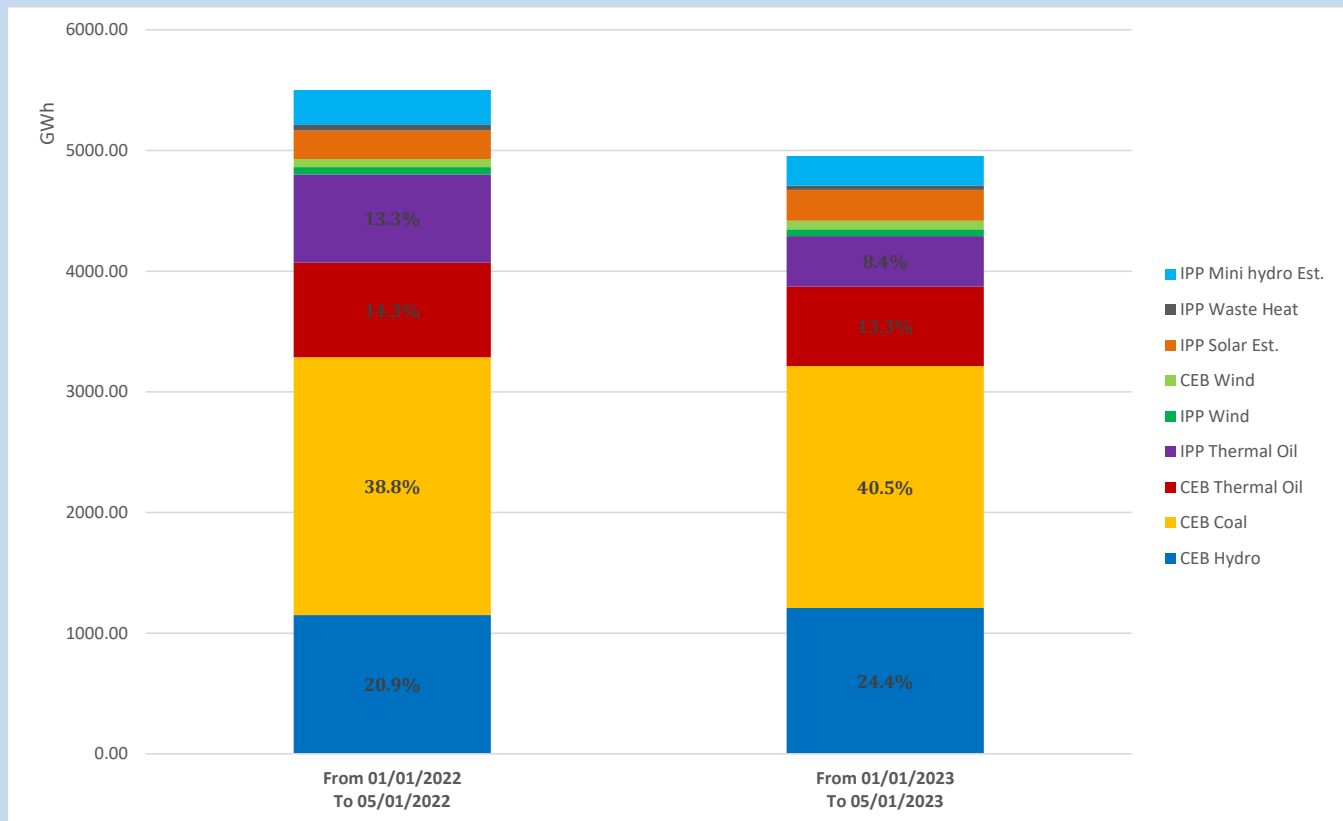
Solar Generation during

May 1, 2023

Based on Telemetered Power Stations only



Cumulative Dispatch Comparison with Last Year



The above figures are including contribution from roof top solar, non telemetered solar and mini hydro plants

Thermal Plant Fuel types

Power Station	Primary Fuel
CEB Thermal	
Sapugaskanda 1	Heavy Fuel
Sapugaskanda 2	Heavy Fuel
Kelanitissa Small Gas Turbines	Auto Diesel
GT 7 - Kelanitissa	Auto Diesel
Kelanitissa CCY	Naphtha or Diesel
Lakvijaya 1	Coal
Lakvijaya 2	Coal
Lakvijaya 3	Coal
Uthuru Janani	Heavy Fuel
Barge CEB	Heavy Fuel

Power Station	Primary Fuel
Private Thermal	
West Coast	Auto Diesel / Heavy Fuel

Major Incidents reported during the day

May 1, 2023

- 1) Athurugiriya 33kV B/S CB and 33kV feeders 02, 04, 06 and 08 were normalized by 12:28hrs.
- 2) Uthuru Janani Generator 01 made unavailable at 15:32hrs due to high vibration. Uthuru Janani Generator 01 is yet to resume generation.
- 3) Mannar VSR manually switched off at 21:34hrs due to an indication of PRV alarm. Mannar VSR is yet to be restored.