

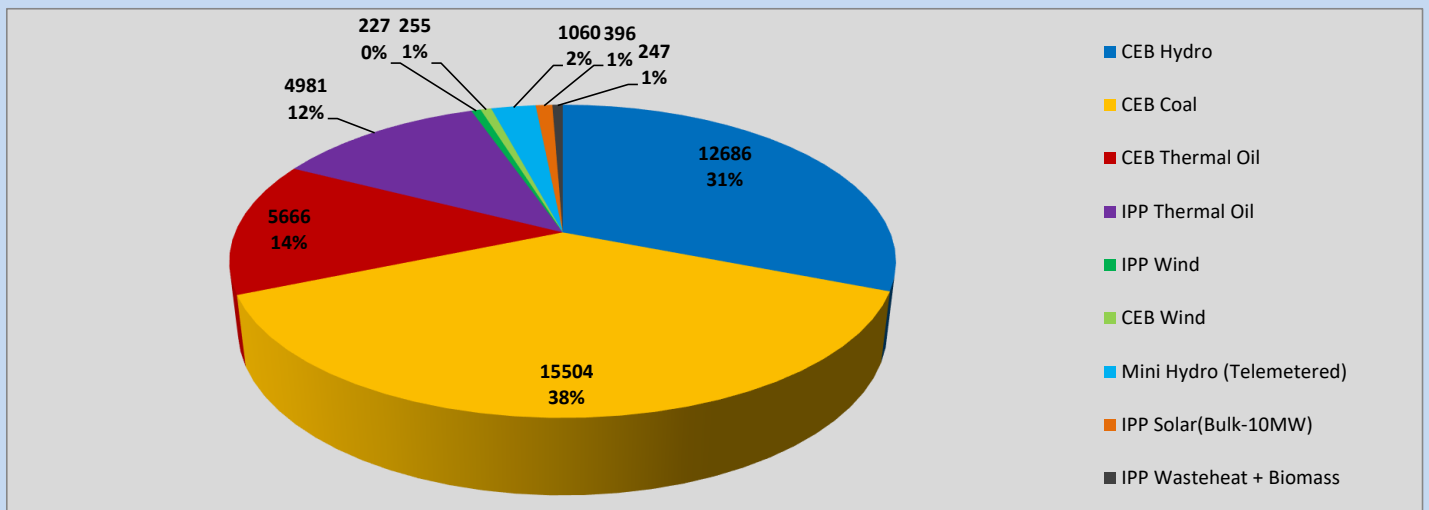
# Generation and Reservoirs Statistics

April 3, 2023



PUBLIC UTILITIES COMMISSION OF SRI LANKA

## Daily Generation Mix in MWh



Total Generation (Excluding estimated figures) =



**41,022 MWh**

### Estimated figures of CEB generation report

Estimated unserved energy = 0.00 GWh  
 Estimated Mini Hydro (Non telemetered) = 1320 MWh  
 Estimated IPP Solar PV (Bulk 1-10MW) = 304 MWh  
 Estimated Solar Roof Top PV = 1640 MWh

## Cumulative Dispatch

Following data excludes the contribution from roof top solar, non telemetered solar and mini hydro plants

### For Current Month

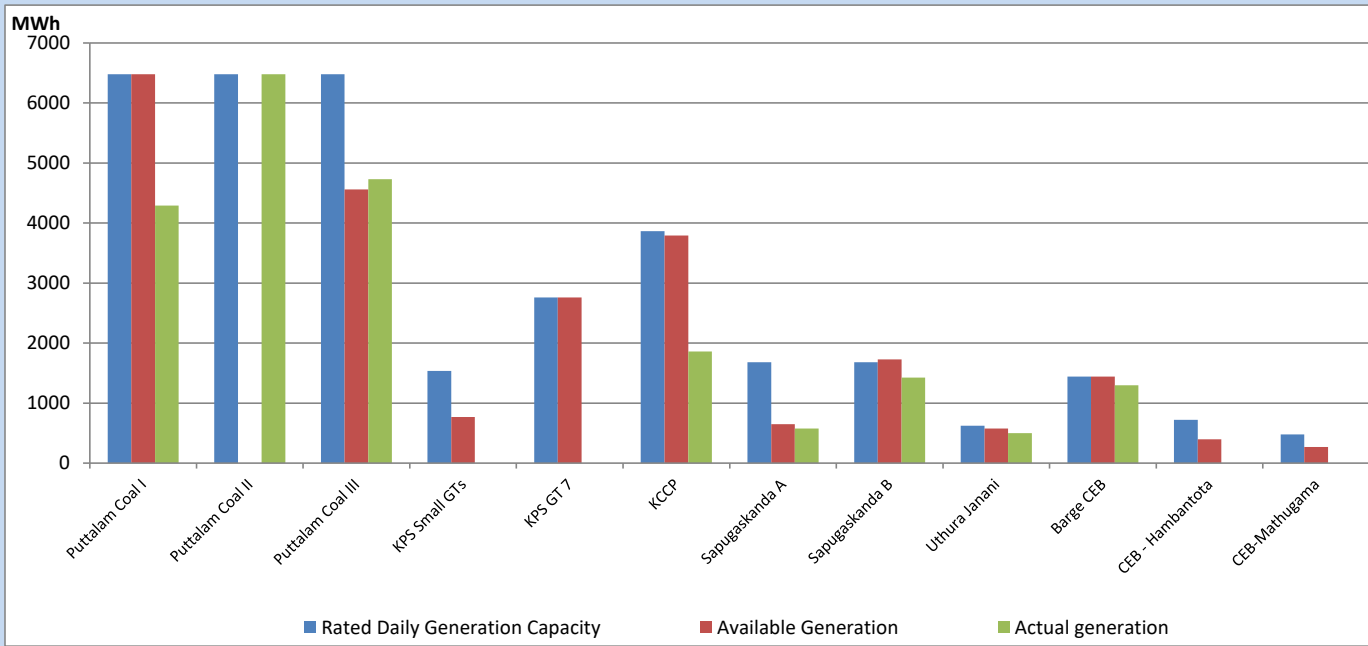
Category	Dispatch (GWh)	Percentage
CEB Hydro	36	31.28%
CEB Coal	45	38.46%
CEB Thermal Oil	14	12.22%
IPP Thermal	15	12.72%
SPP Wind	1	0.58%
CEB Wind	1	0.88%
Mini Hydro (Telemetered)	3	2.17%
IPP Solar (Bulk-10MW)	1	0.96%
IPP Wasteheat + BMP	1	0.74%
<b>Total</b>	<b>116</b>	

### For Current Year

Category	Dispatch (GWh)	Percentage
CEB Hydro	958	27.11%
CEB Coal	1,567	44.37%
CEB Thermal Oil	484	13.71%
IPP Thermal	285	8.07%
SPP Wind	52	1.46%
CEB Wind	61	1.73%
Mini Hydro (Telemetered)	71	2.02%
IPP Solar (Bulk-10MW)	27	0.76%
IPP Wasteheat	27	0.77%
<b>Total</b>	<b>3,532</b>	

## CEB owned Thermal Plant Dispatch

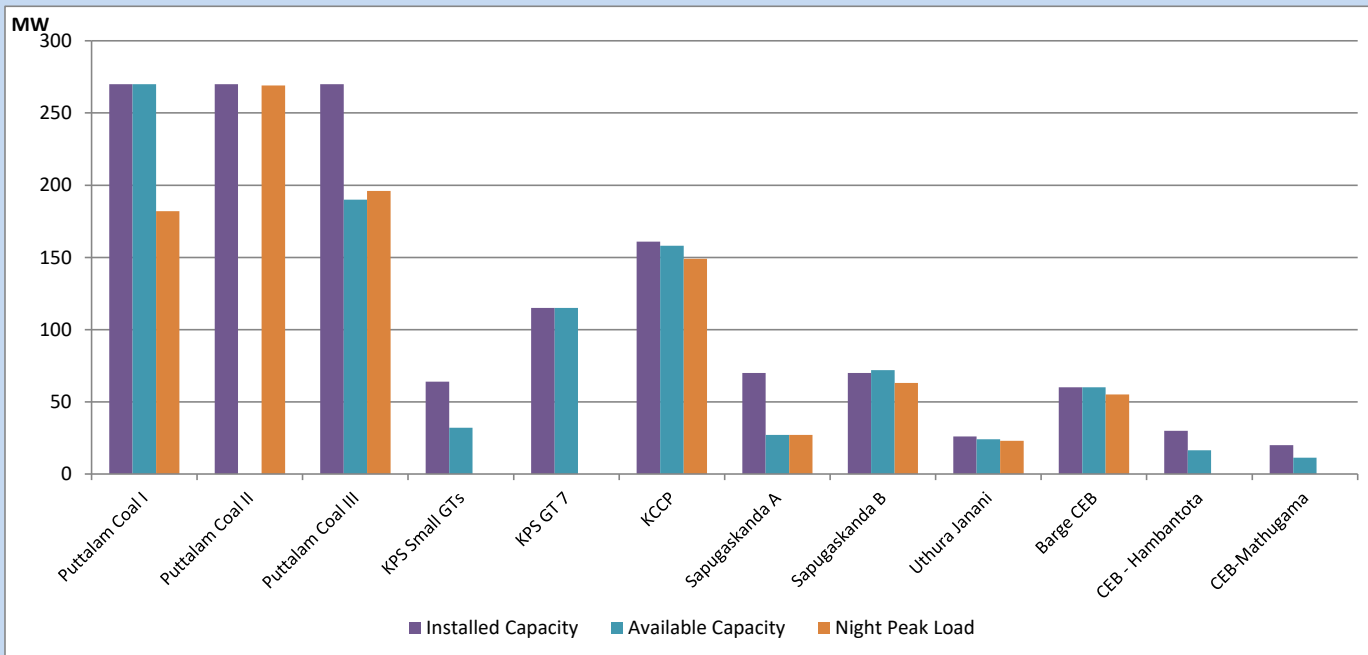
April 3, 2023



Available Generation is estimated based on plant availability at 6.00am on

April 4, 2023

## CEB owned Thermal Plant Loading at the Night Peak

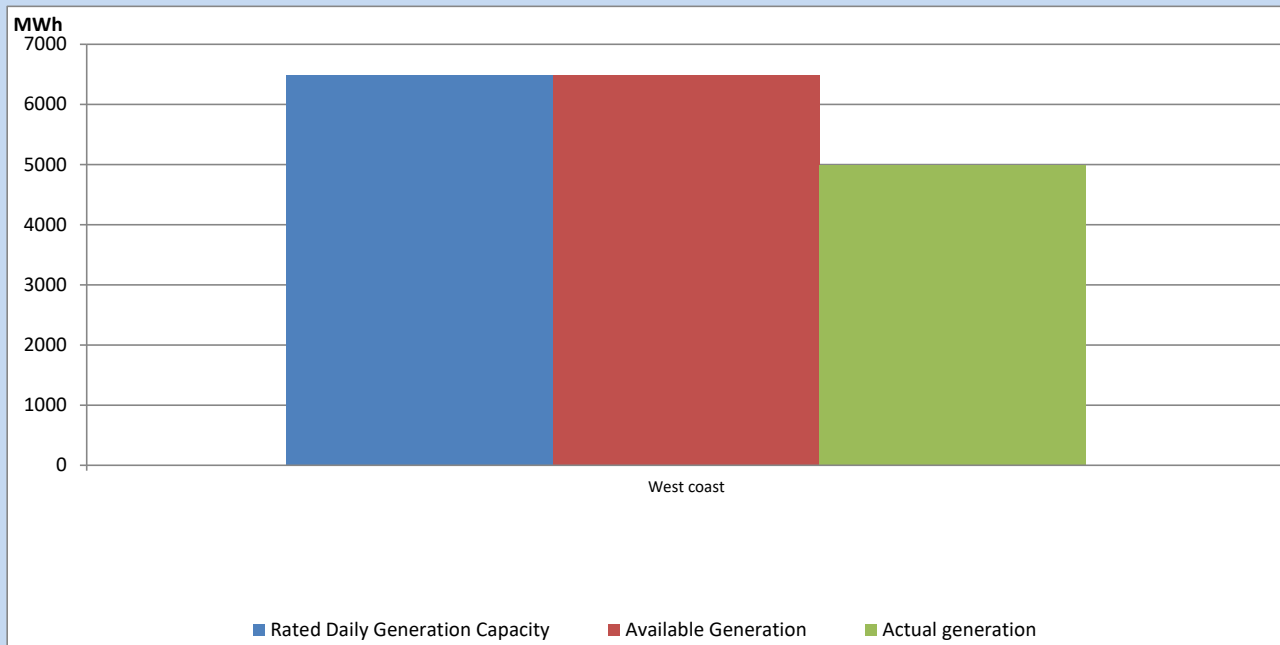


Note- Plant availability is recorded at 6.00 am on

April 4, 2023

## IPP owned Thermal Plant Dispatch

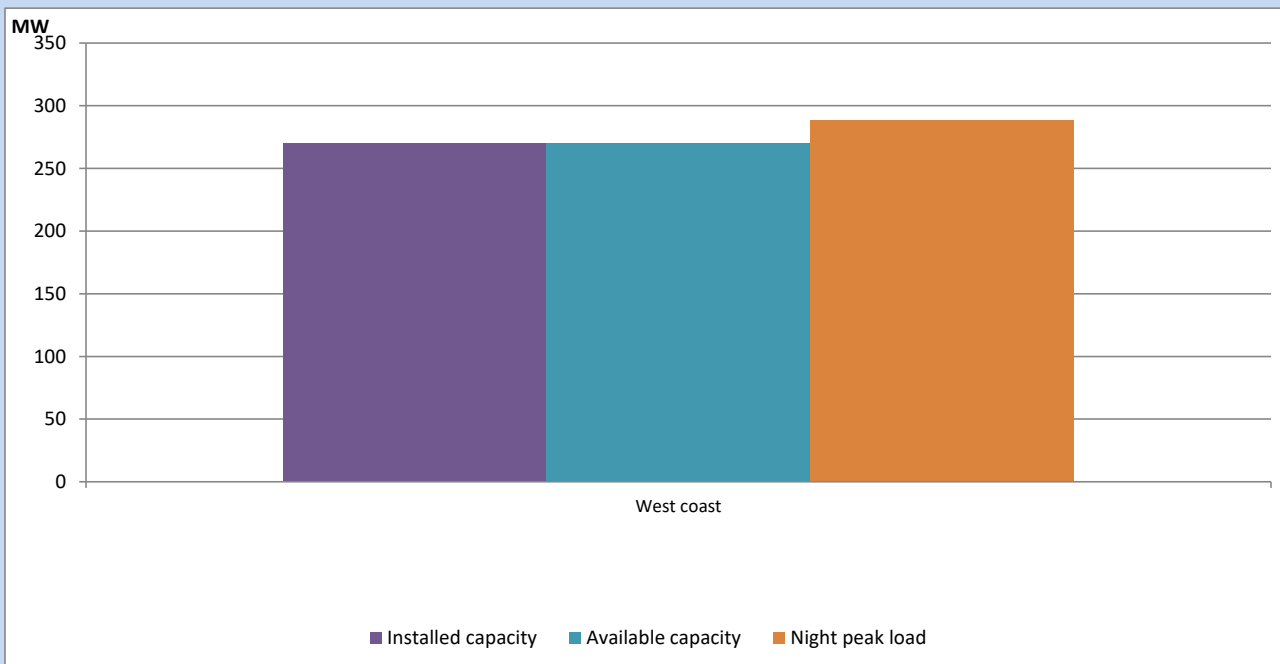
April 3, 2023



Available Generation is estimated based on plant availability at 6.00am on

April 4, 2023

## IPP owned Thermal Plant Loading at the Night Peak

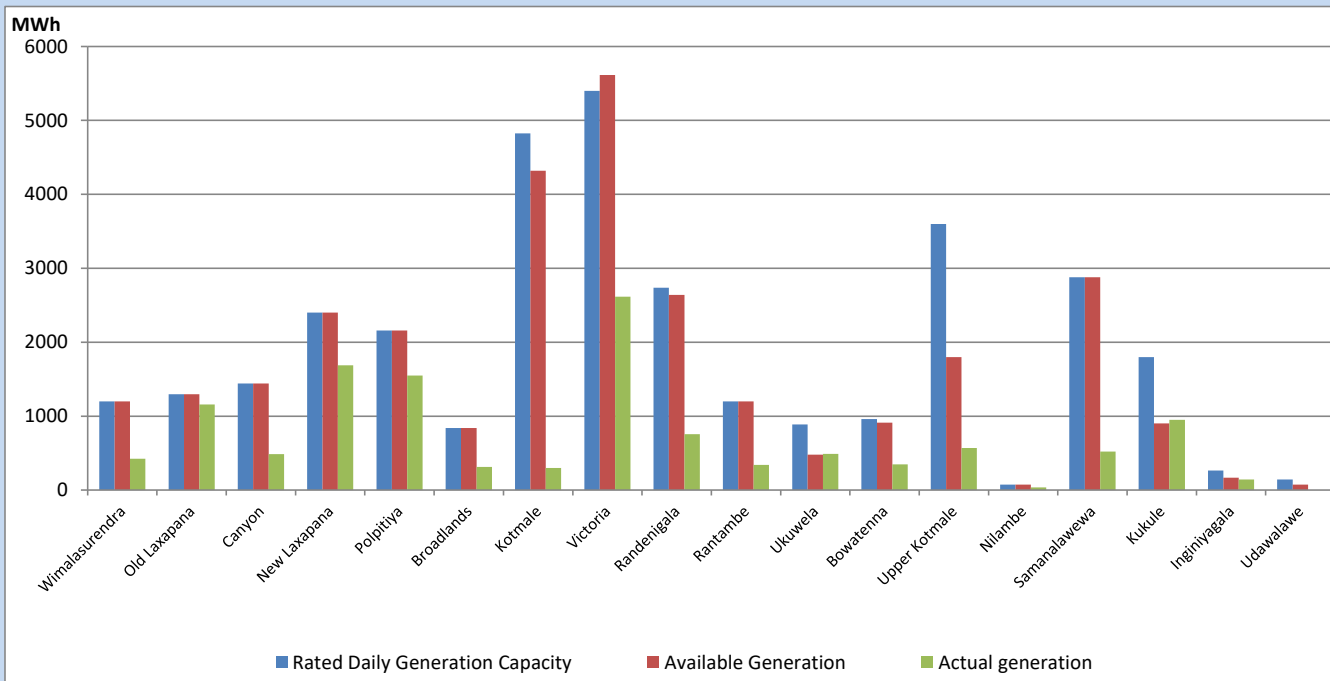


Note- Plant availability is recorded at 6.00 am on

April 4, 2023

## Major Hydro Plant Dispatch

April 3, 2023

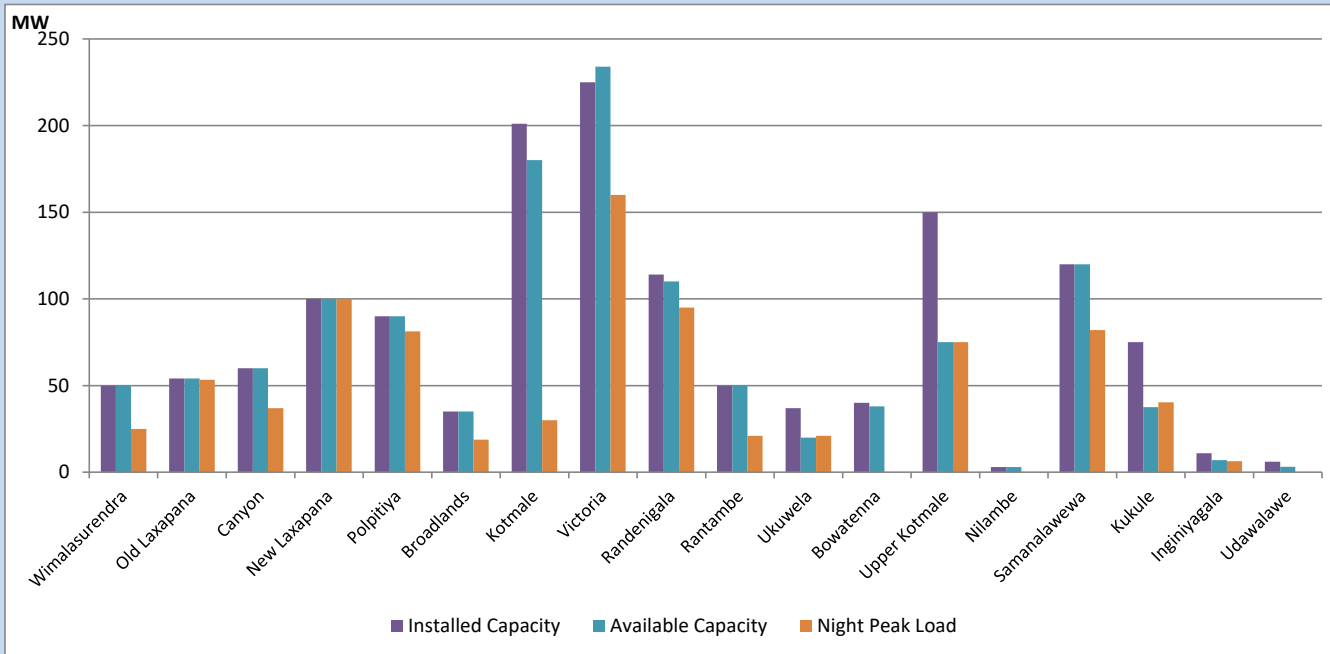


Available Generation is estimated based on plant availability at 6.00am on  
Broadlands power plant is operating in the Commissioning Stage

April 4, 2023

## Major Hydro Plant Loading at Night Peak

April 3, 2023



Note- Plant availability is recorded at 6.00 am on

April 4, 2023

Broadlands power plant is operating in the Commissioning Stage

## Summary of Major Plant performance

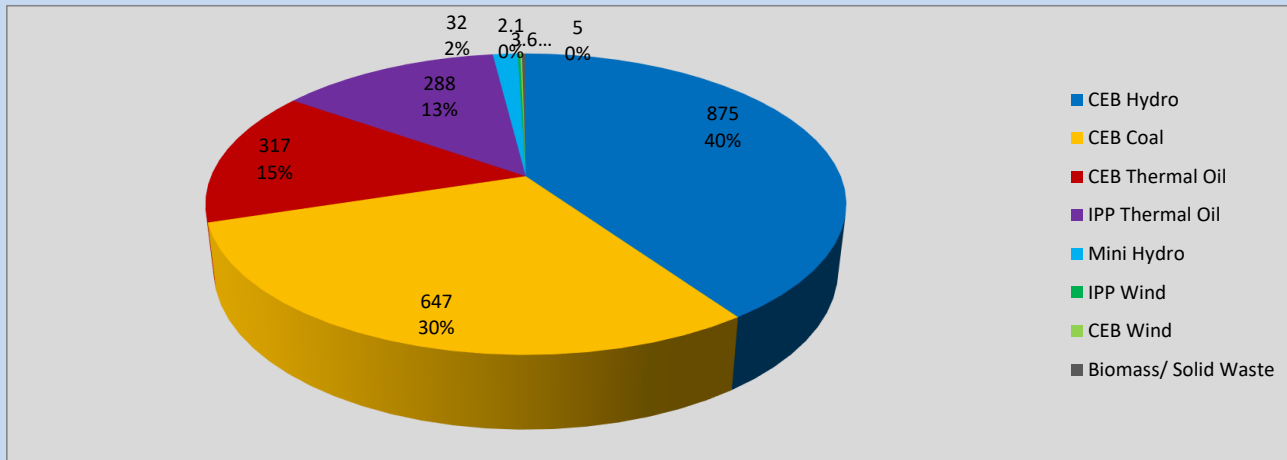
Plant	Installed Capacity	Plant Availability	Night peak Load	Plant Dispatch
	(MW)	(MW)	(MW)	(MWh)
Wimalasurendra	50	50	25	422
Old Laxapana	54	54	53	1,159
Canyon	60	60	37	487
New Laxapana	100	100	100	1,689
Polpitiya	90	90	81	1,549
Broadlands	35	35	19	314
Kotmale	201	180	30	300
Victoria	225	234	160	2,616
Randenigala	114	110	95	755
Rantambe	50	50	21	341
Ukuwela	37	20	21	488
Bowatenna	40	38	0	348
Upper Kotmale	150	75	75	569
Nilambe	3	3	0	35
Samanalawewa	120	120	82	521
Kukule	75	38	40	949
Inginiyagala	11	7	6	144
Udawalawe	6	3	0	0
Puttalam Coal I	270	270	182	4,293
Puttalam Coal II	270	0	269	6,481
Puttalam Coal III	270	190	196	4,730
KPS Small GTs	64	32	0	0
KPS GT 7	115	115	0	0
KCCP	161	158	149	1,862
Sapugaskanda A	70	27	27	578
Sapugaskanda B	70	72	63	1,427
Uthura Janani	26	24	23	501
Barge CEB	60	60	55	1,298
CEB-Hambantota	30	17	0	0
CEB-Mathugama	20	11	0	0
ACE Matara	24	0	0	0
Asia Power	50	0	0	0
Sojitz Kelanitissa	163	0	0	0
West Coast	270	270	288	4,981
Nothern Power	36	0	0	0
ACE Embilipitiya	93	0	0	0
<b>Total</b>	<b>3,483</b>	<b>2,512</b>	<b>2,141</b>	<b>41,022</b>

Plant availability is the availability recorded at 6 am on

April 4, 2023

## Contribution to the Night Peak in MW

April 3, 2023

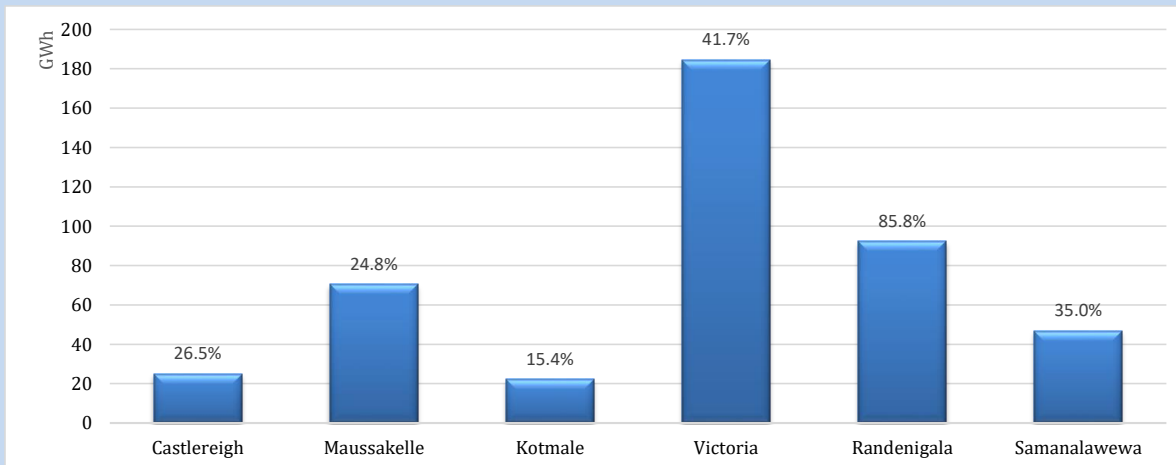


Night Peak*	2,170 MW
Day Peak	2,071 MW
Minimum Demand	1,180 MW

Above figures are excluding contribution from roof top solar, non telemetered solar and mini hydro plants

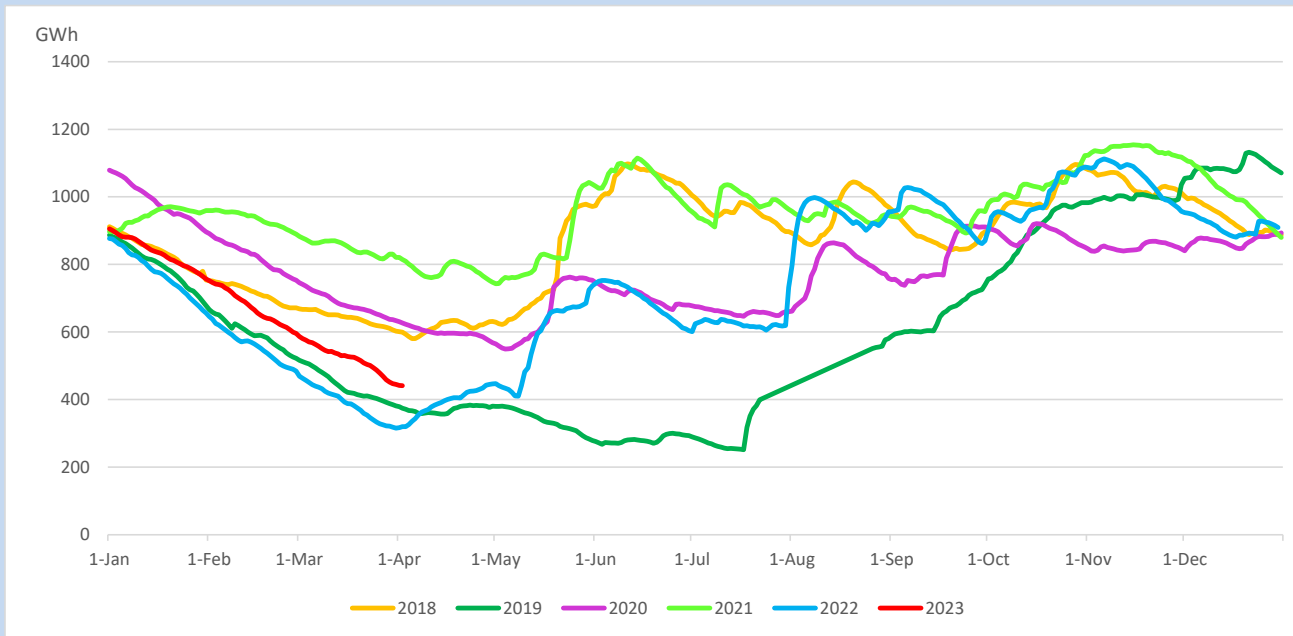
## Reservoir Levels -

as at 06.00 Hr on April 4, 2023

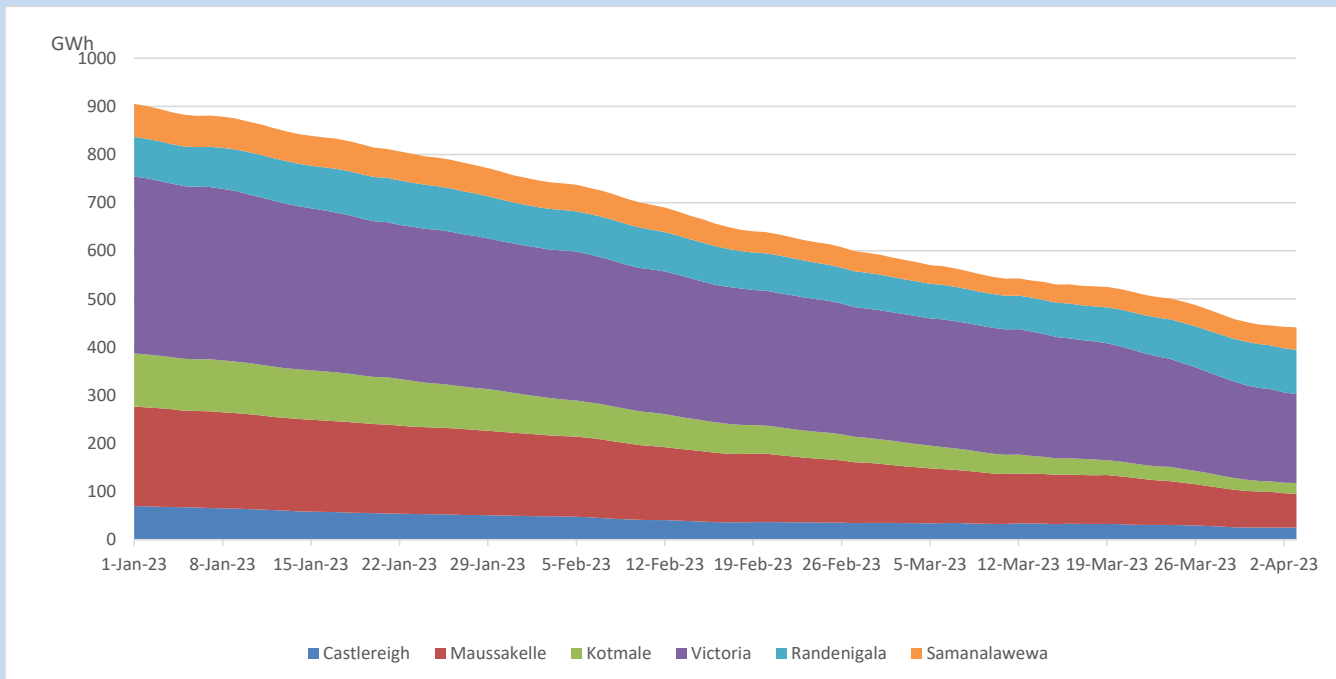


Total Reservoir Level	441.2 GWh
% of Total capacity	36.6%

## Comparison of Total Reservoir Storage Levels with Past Years

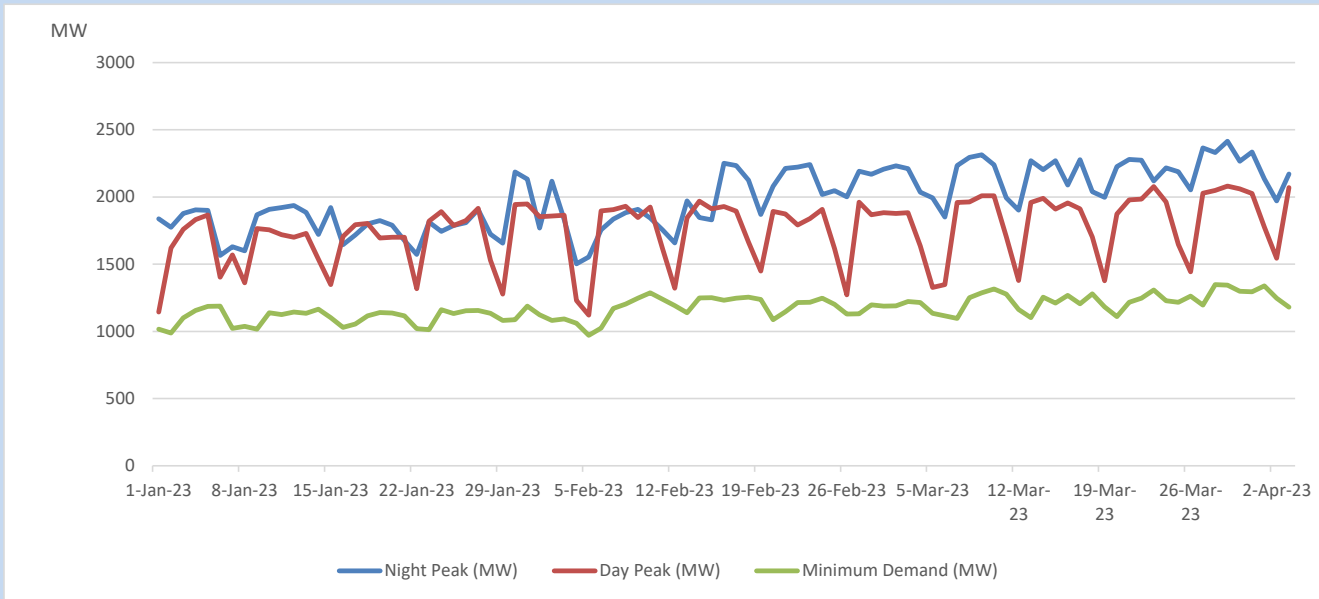


## Variation of Major Hydro Reservoir Levels in the current year (GWh)





## Variation of Demand during the current year

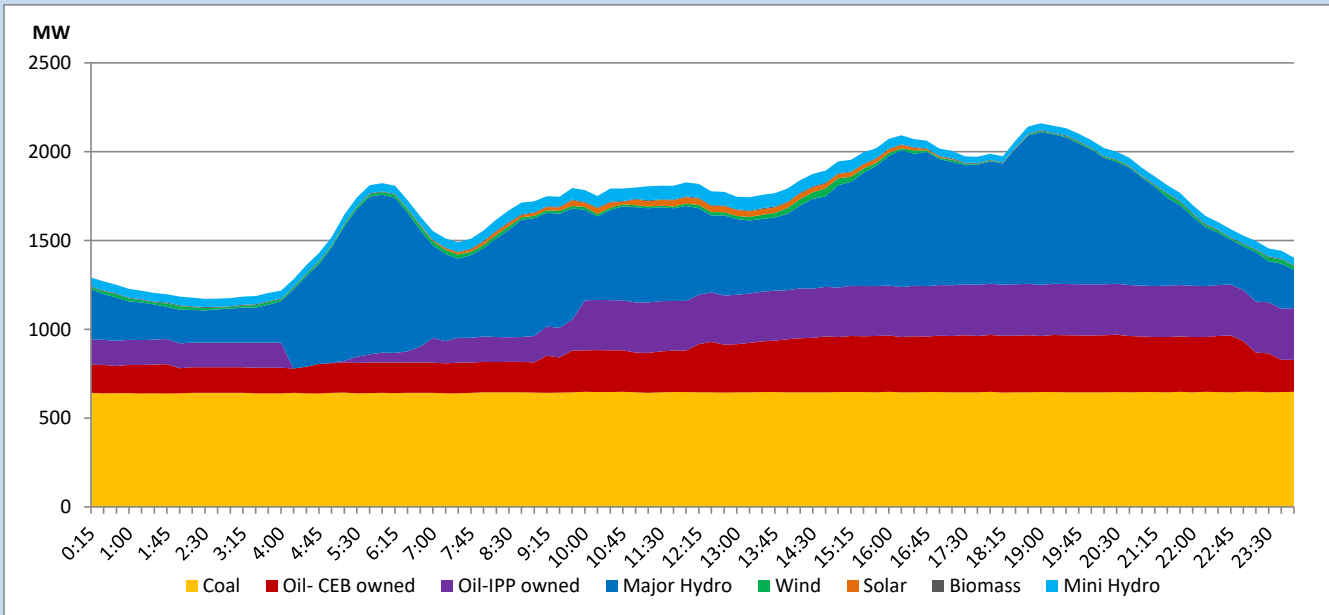


The above figures are excluding contribution from roof top solar, non telemetered solar and mini hydro plants

## Daily Load Curve

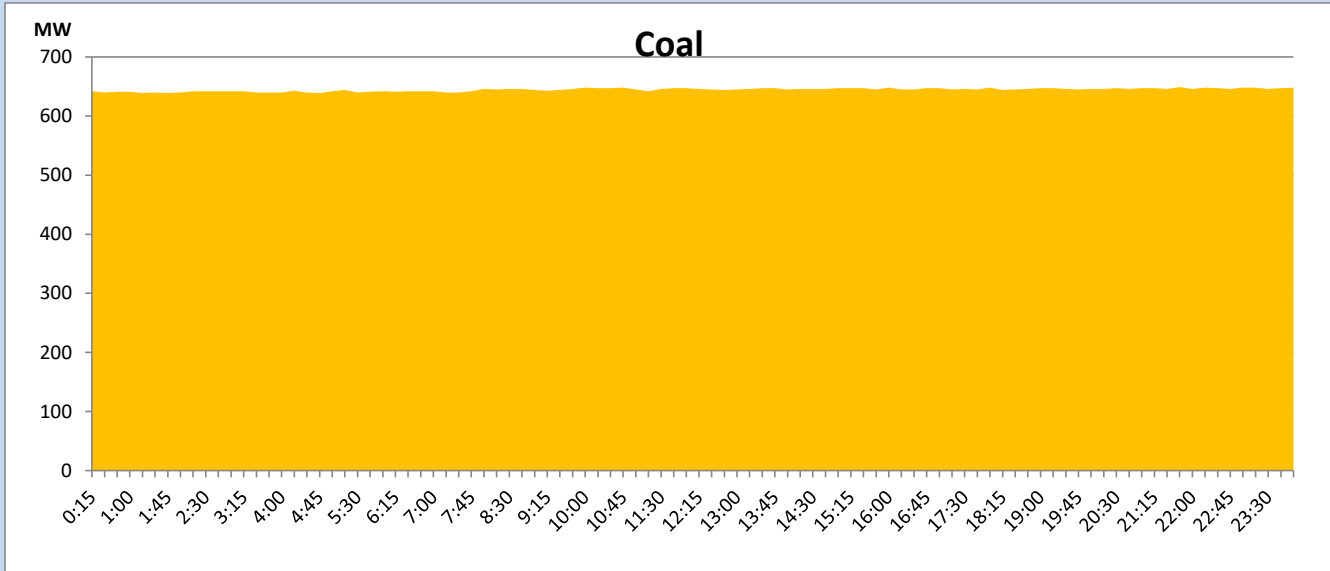
April 3, 2023

Solar and wind data is based on Telemetered Power Stations only



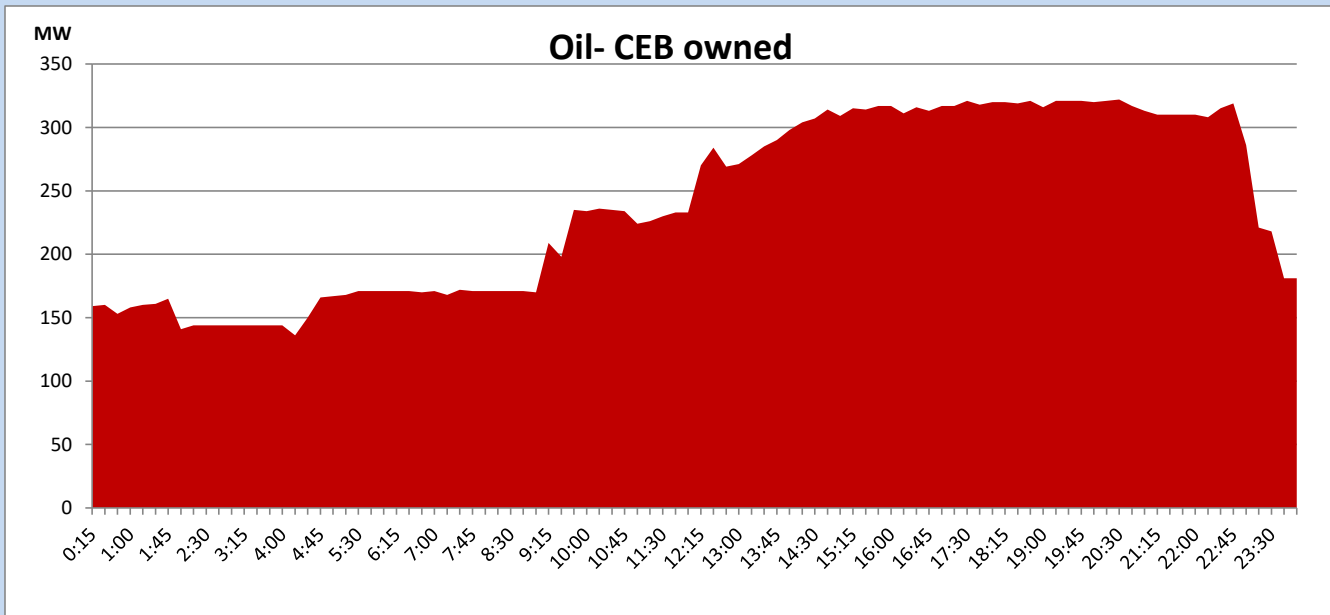
## Coal Generation during

April 3, 2023



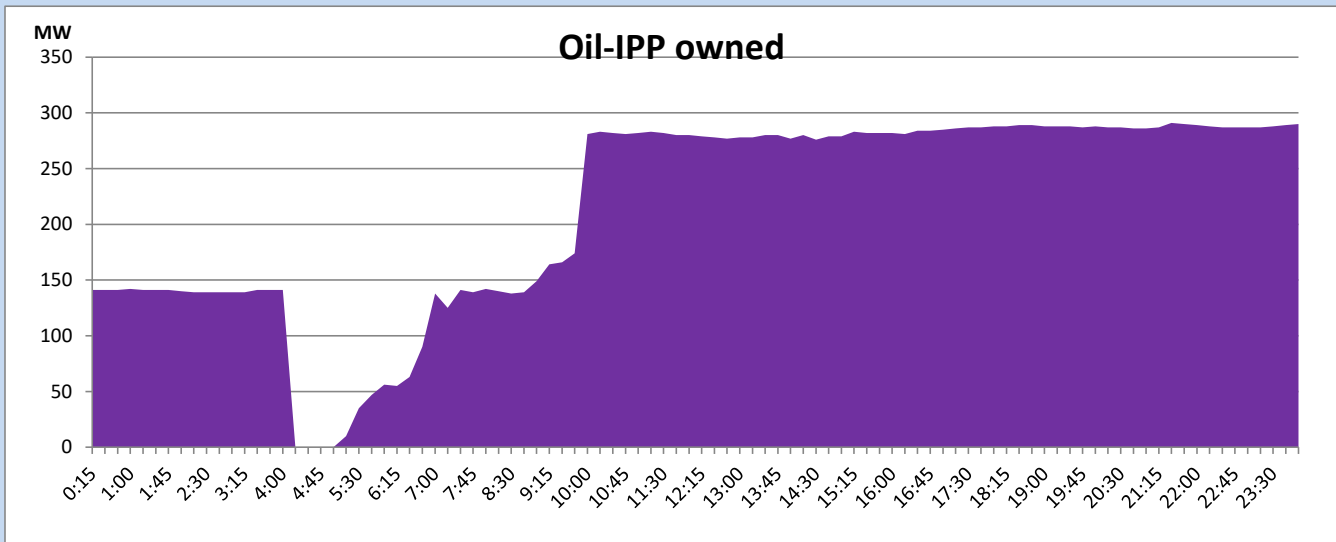
## CEB Oil Plant Generation during

April 3, 2023



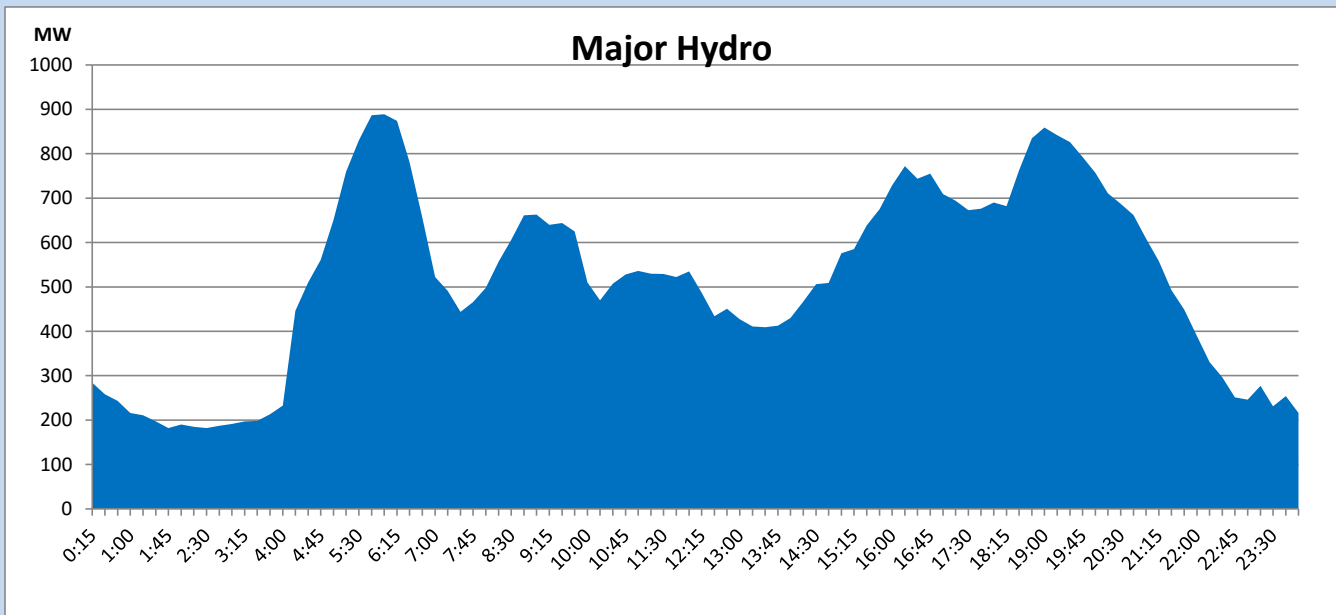
## IPP Oil Plant Generation during

April 3, 2023



## Major Hydro Generation during

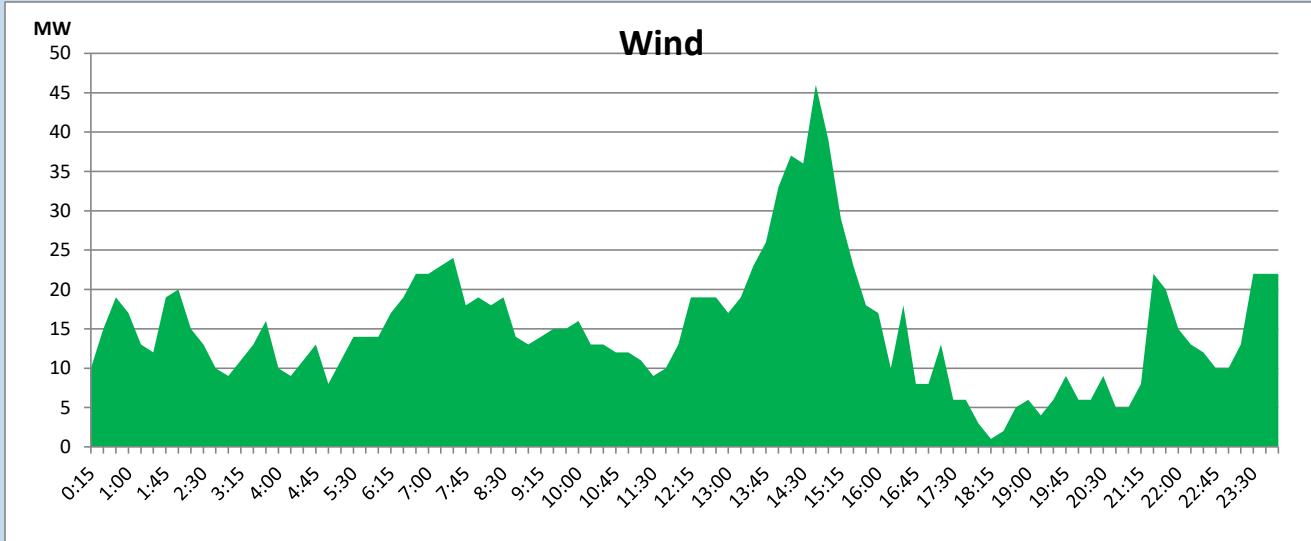
April 3, 2023



## Wind Generation during

April 3, 2023

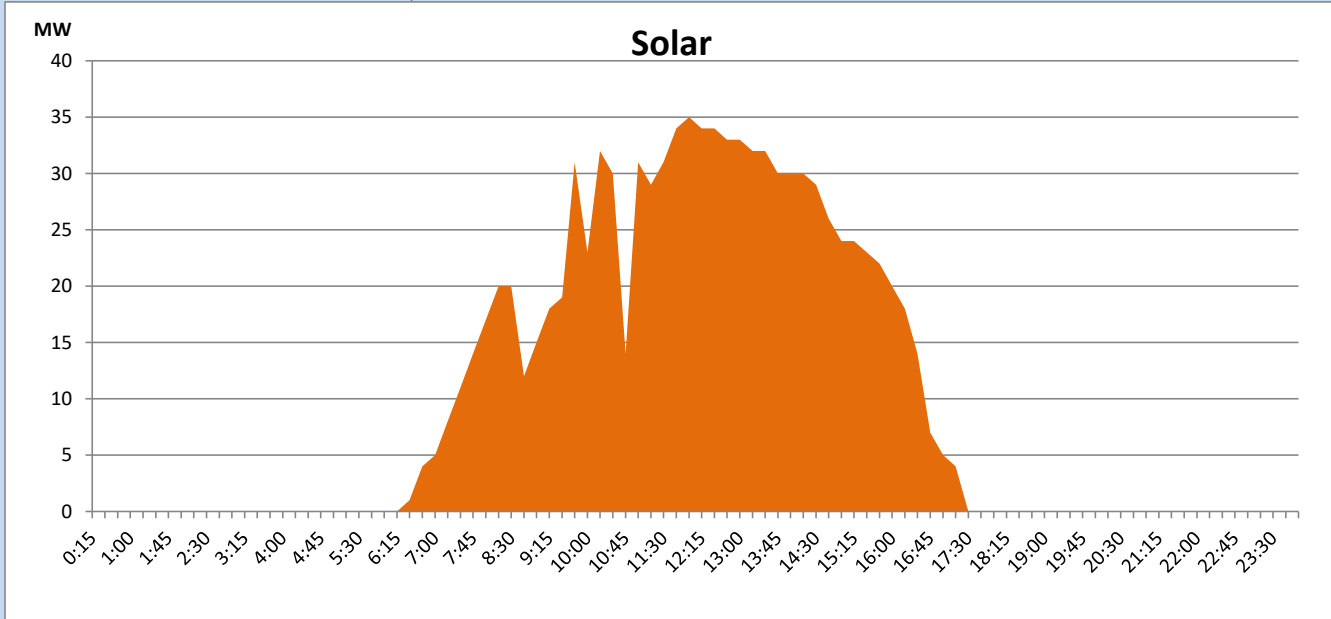
Based on Telemetered Power Stations only



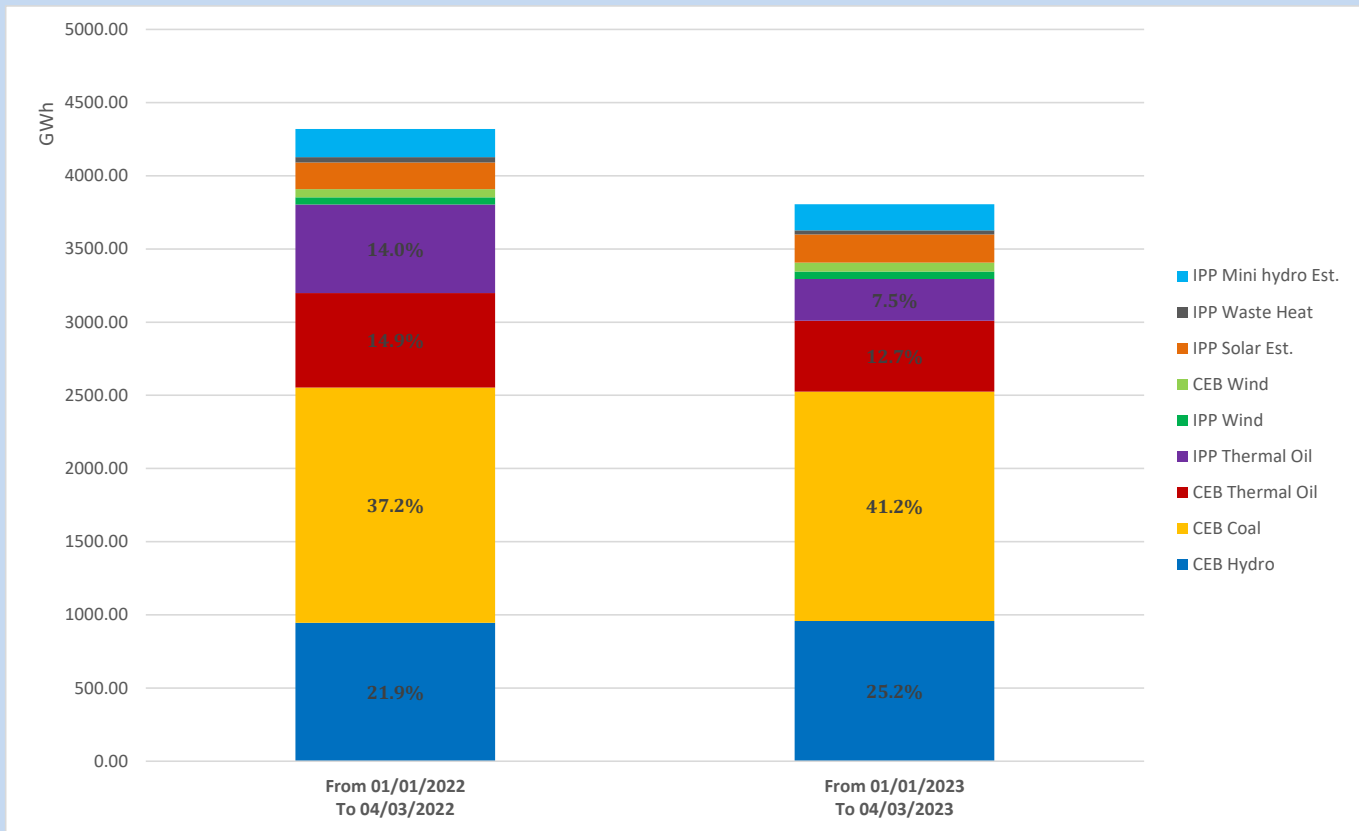
## Solar Generation during

April 3, 2023

Based on Telemetered Power Stations only



## Cumulative Dispatch Comparison with Last Year



The above figures are including contribution from roof top solar, non telemetered solar and mini hydro plants

## Thermal Plant Fuel types

Power Station	Primary Fuel
CEB Thermal	
Sapugaskanda 1	Heavy Fuel
Sapugaskanda 2	Heavy Fuel
Kelanitissa Small Gas Turbines	Auto Diesel
GT 7 - Kelanitissa	Auto Diesel
Kelanitissa CCY	Naphtha or Diesel
Lakvijaya 1	Coal
Lakvijaya 2	Coal
Lakvijaya 3	Coal
Uthuru Janani	Heavy Fuel
Barge CEB	Heavy Fuel

Power Station	Primary Fuel
Private Thermal	
West Coast	Auto Diesel / Heavy Fuel

## Major Incidents reported during the day

April 3, 2023

- 1) WCP resumed generation at 05:02hrs and reached full load 270MW at 10:02hrs.
- 2) Power Barge Gen 04 made unavailable from 09:15hrs to 11:20hrs and 11:50hrs to 12:53hrs due to a firing issue in engine cylinder.
- 3) Sapugaskanda P/S Gen 03 made unavailable from 21:03hrs to 22:16hrs due to abnormal sound in PMG.
- 4) LVPS unit 01 reached full load 270MW (net) at 2:10hrs (04.04.2023).
- 5) LVPS unit 02 shutdown sequence started at 3:00hrs (04.04.2023) due to a leakage in the drain of the feed water line.