

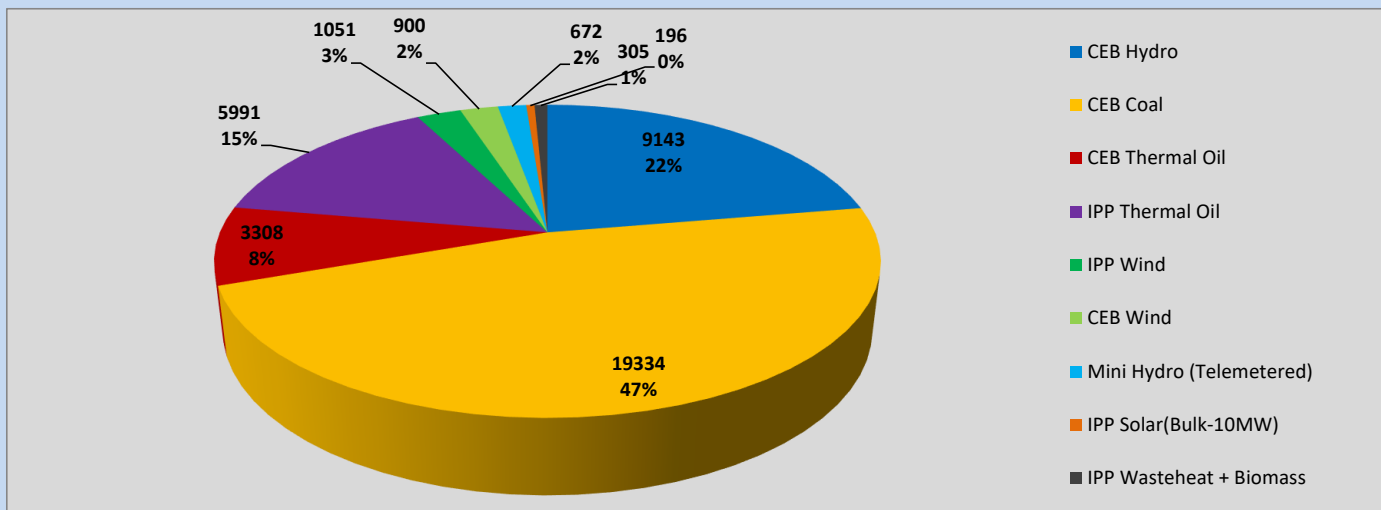
# Generation and Reservoirs Statistics

February 28, 2023



PUBLIC UTILITIES COMMISSION OF SRI LANKA

## Daily Generation Mix in MWh



Total Generation (Excluding estimated figures) =

40,900 MWh

### Estimated figures of CEB generation report

Estimated unserved energy = 0.00 GWh  
 Estimated Mini Hydro (Non telemetered) = 1208 MWh  
 Estimated IPP Solar PV (Bulk 1-10MW) = 304 MWh  
 Estimated Solar Roof Top PV = 1450 MWh

## Cumulative Dispatch

Following data excludes the contribution from roof top solar, non telemetered solar and mini hydro plants

### For Current Month

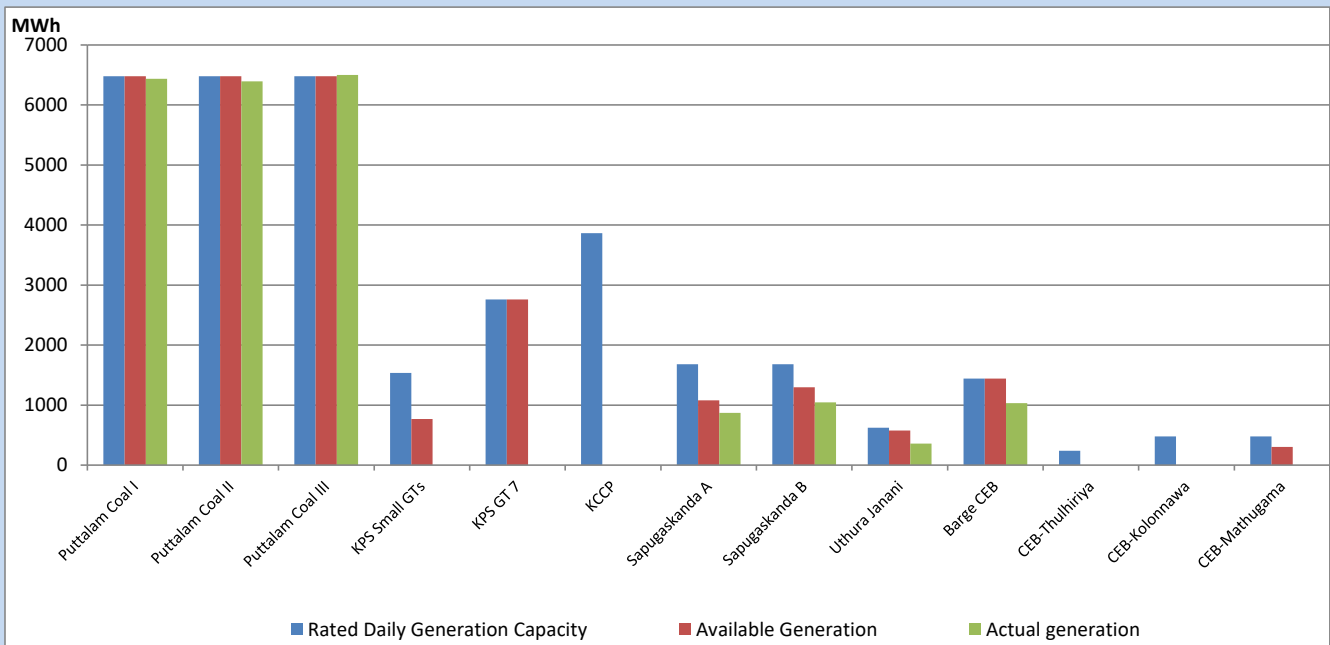
Category	Dispatch (GWh)	Percentage
CEB Hydro	272	25.58%
CEB Coal	537	50.62%
CEB Thermal Oil	104	9.83%
IPP Thermal	75	7.09%
SPP Wind	17	1.61%
CEB Wind	19	1.81%
Mini Hydro (Telemetered)	19	1.78%
IPP Solar(Bulk-10MW)	8	0.78%
IPP Wasteheat + BMP	10	0.90%
<b>Total</b>	<b>1,061</b>	

### For Current Year

Category	Dispatch (GWh)	Percentage
CEB Hydro	601	27.64%
CEB Coal	1,004	46.15%
CEB Thermal Oil	277	12.73%
IPP Thermal	131	6.02%
SPP Wind	38	1.75%
CEB Wind	44	2.04%
Mini Hydro (Telemetered)	46	2.12%
IPP Solar(Bulk-10MW)	17	0.76%
IPP Wasteheat	17	0.79%
<b>Total</b>	<b>2,176</b>	

## CEB owned Thermal Plant Dispatch

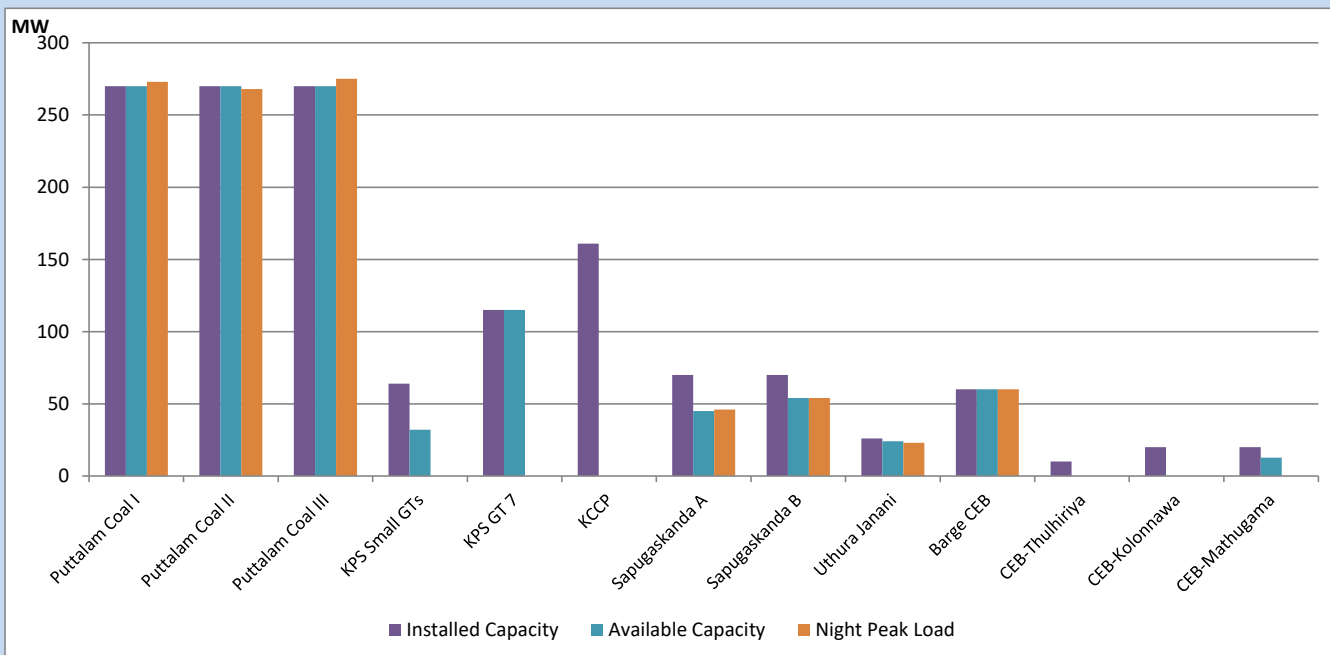
February 28, 2023



Available Generation is estimated based on plant availability at 6.00am on

March 1, 2023

## CEB owned Thermal Plant Loading at the Night Peak

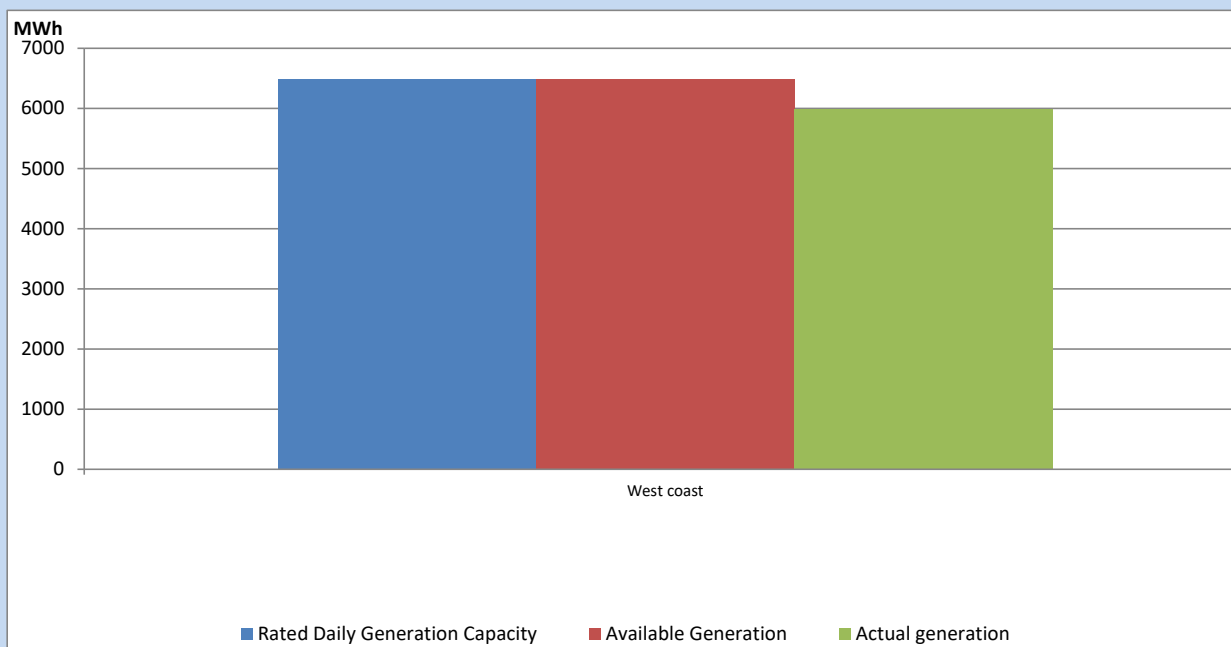


Note- Plant availability is recorded at 6.00 am on

March 1, 2023

## IPP owned Thermal Plant Dispatch

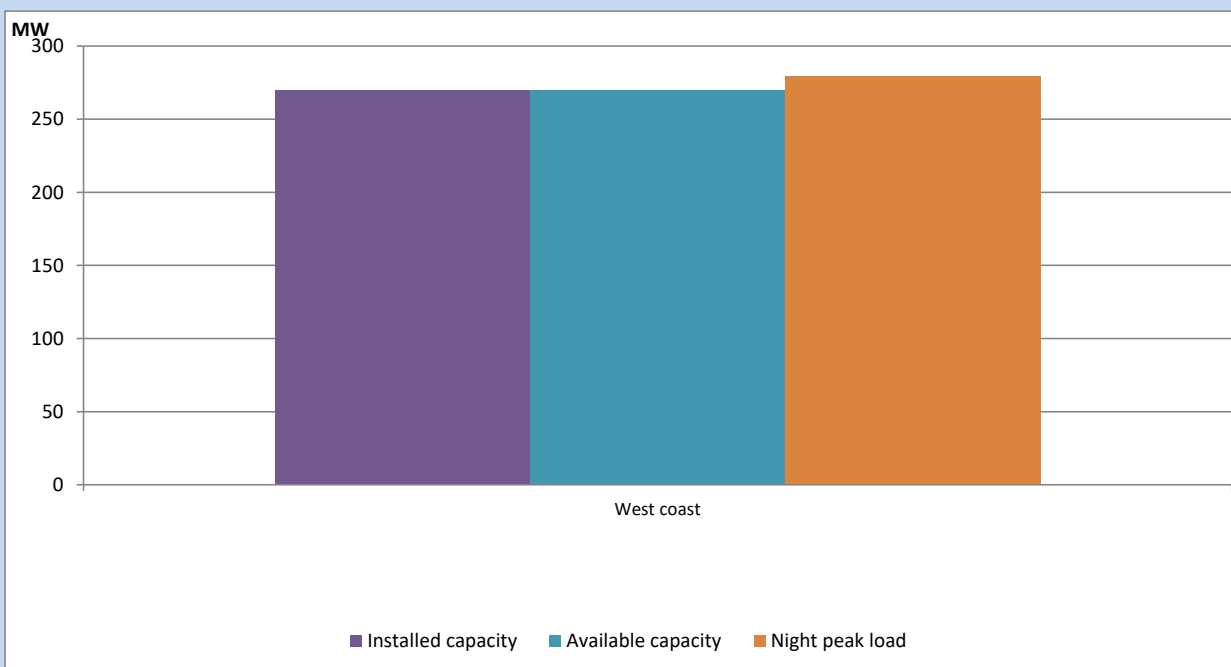
February 28, 2023



Available Generation is estimated based on plant availability at 6.00am on

March 1, 2023

## IPP owned Thermal Plant Loading at the Night Peak

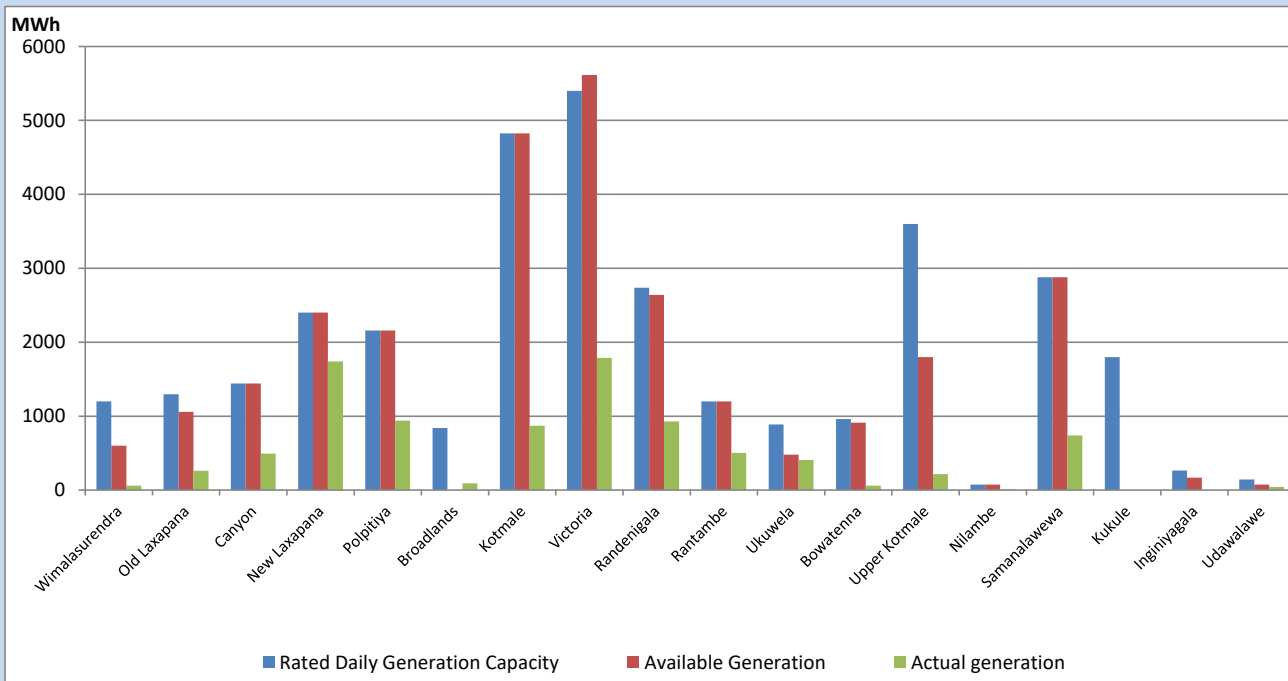


Note- Plant availability is recorded at 6.00 am on

March 1, 2023

## Major Hydro Plant Dispatch

February 28, 2023

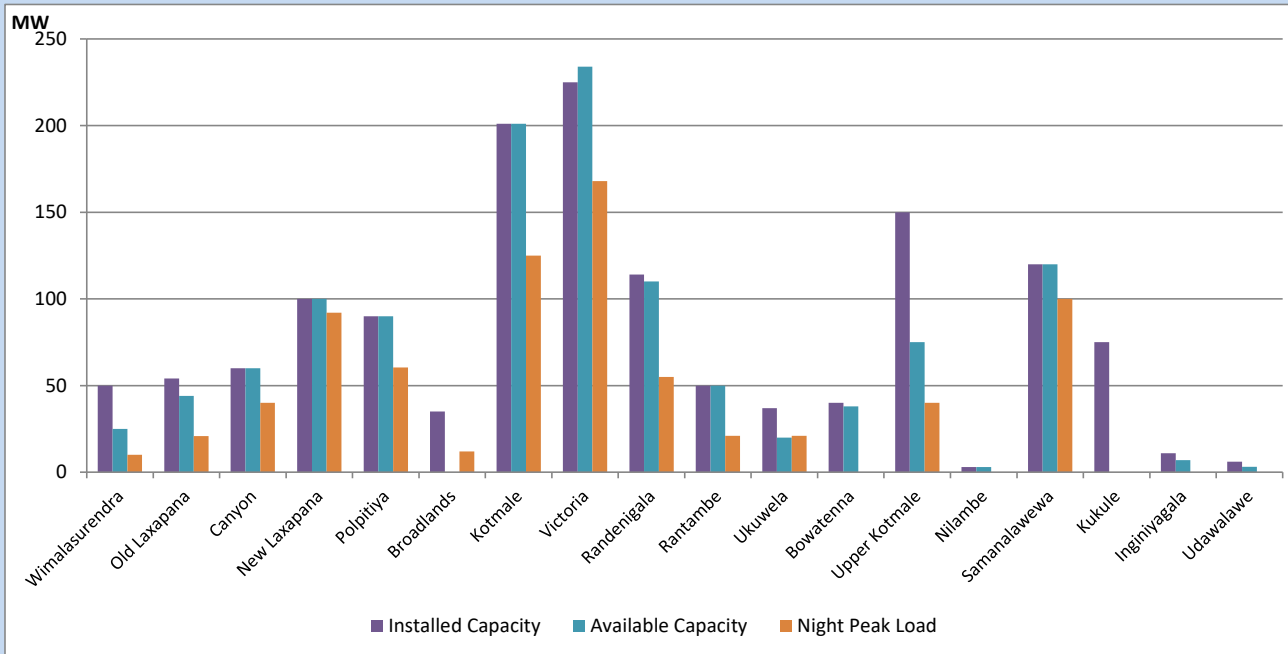


Available Generation is estimated based on plant availability at 6.00am on  
Broadlands power plant is operating in the Commissioning Stage

March 1, 2023

## Major Hydro Plant Loading at Night Peak

February 28, 2023



Note- Plant availability is recorded at 6.00 am on  
Broadlands power plant is operating in the Commissioning Stage

March 1, 2023

## Summary of Major Plant performance

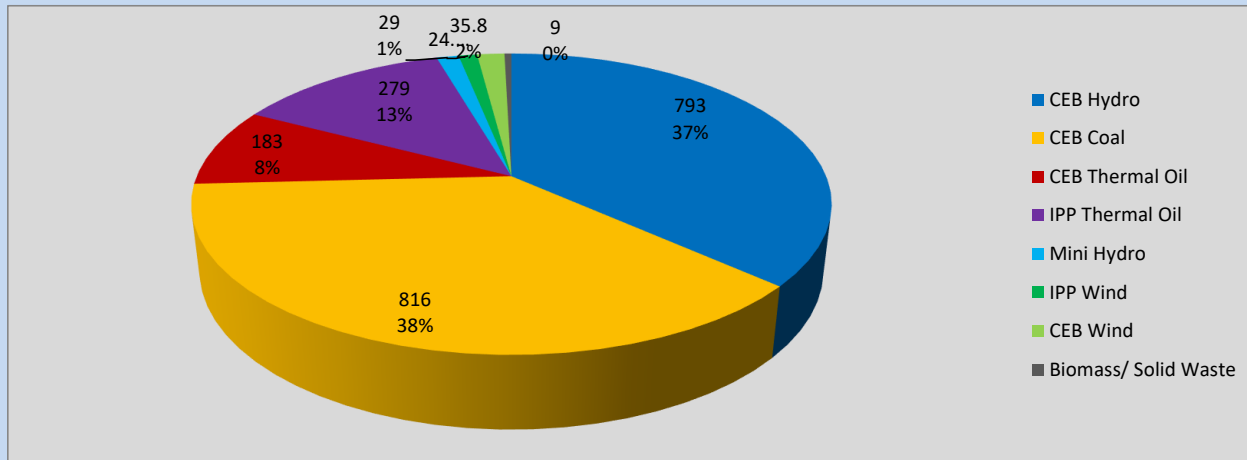
Plant	Installed Capacity	Plant Availability	Night peak Load	Plant Dispatch
	(MW)	(MW)	(MW)	(MWh)
Wimalasurendra	50	25	10	59
Old Laxapana	54	44	21	260
Canyon	60	60	40	492
New Laxapana	100	100	92	1,738
Polpitiya	90	90	60	940
Broadlands	35	0	12	92
Kotmale	201	201	125	870
Victoria	225	234	168	1,787
Randenigala	114	110	55	930
Rantambe	50	50	21	504
Ukuwela	37	20	21	405
Bowatenna	40	38	0	60
Upper Kotmale	150	75	40	215
Nilambe	3	3	0	12
Samanalawewa	120	120	100	737
Kukule	75	0	0	0
Inginiyagala	11	7	0	0
Udawalawe	6	3	0	42
Puttalam Coal I	270	270	273	6,437
Puttalam Coal II	270	270	268	6,396
Puttalam Coal III	270	270	275	6,501
KPS Small GTs	64	32	0	0
KPS GT 7	115	115	0	0
KCCP	161	0	0	0
Sapugaskanda A	70	45	46	870
Sapugaskanda B	70	54	54	1,045
Uthura Janani	26	24	23	359
Barge CEB	60	60	60	1,034
CEB-Thulhiriya	10	0	0	0
CEB-Kolonnawa	20	0	0	0
CEB-Mathugama	20	13	0	0
ACE Matara	24	0	0	0
Asia Power	50	0	0	0
Sojitz Kelanitissa	163	0	0	0
West Coast	270	270	279	5,991
Nothern Power	36	0	0	0
ACE Embilipitiya	93	0	0	0
<b>Total</b>	<b>3,483</b>	<b>2,603</b>	<b>2,141</b>	<b>40,900</b>

Plant availability is the availability recorded at 6 am on

March 1, 2023

## Contribution to the Night Peak in MW

February 28, 2023

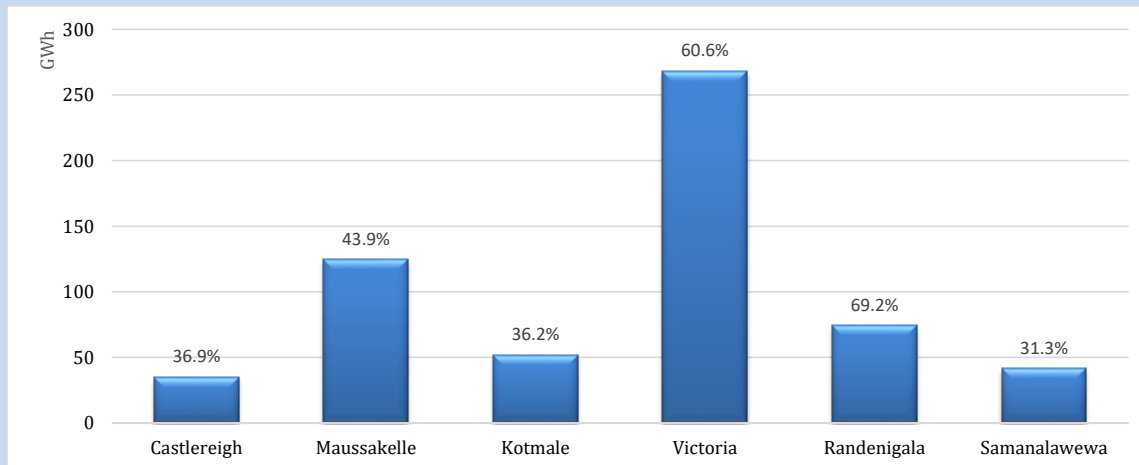


Night Peak*	2,169 MW
Day Peak	1,868 MW
Minimum Demand	1,197 MW

Above figures are excluding contribution from roof top solar, non telemetered solar and mini hydro plants

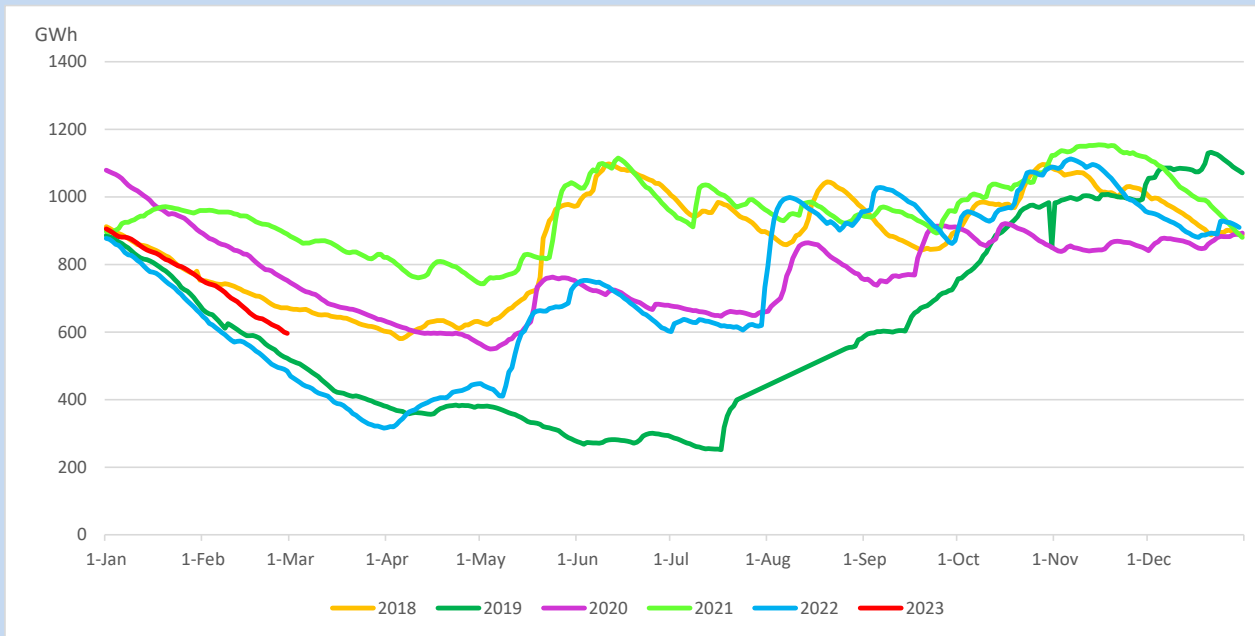
## Reservoir Levels -

as at 06.00 Hr on March 1, 2023

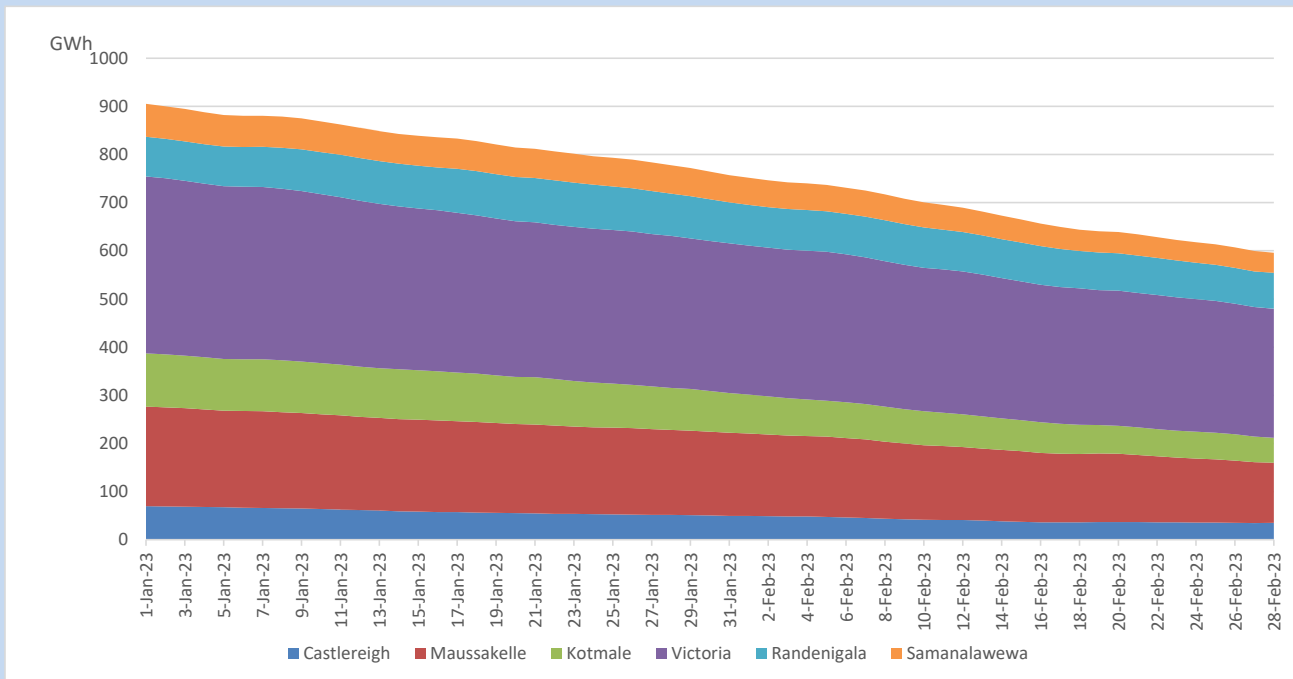


Total Reservoir Level	596 GWh
% of Total capacity	49.4%

## Comparison of Total Reservoir Storage Levels with Past Years

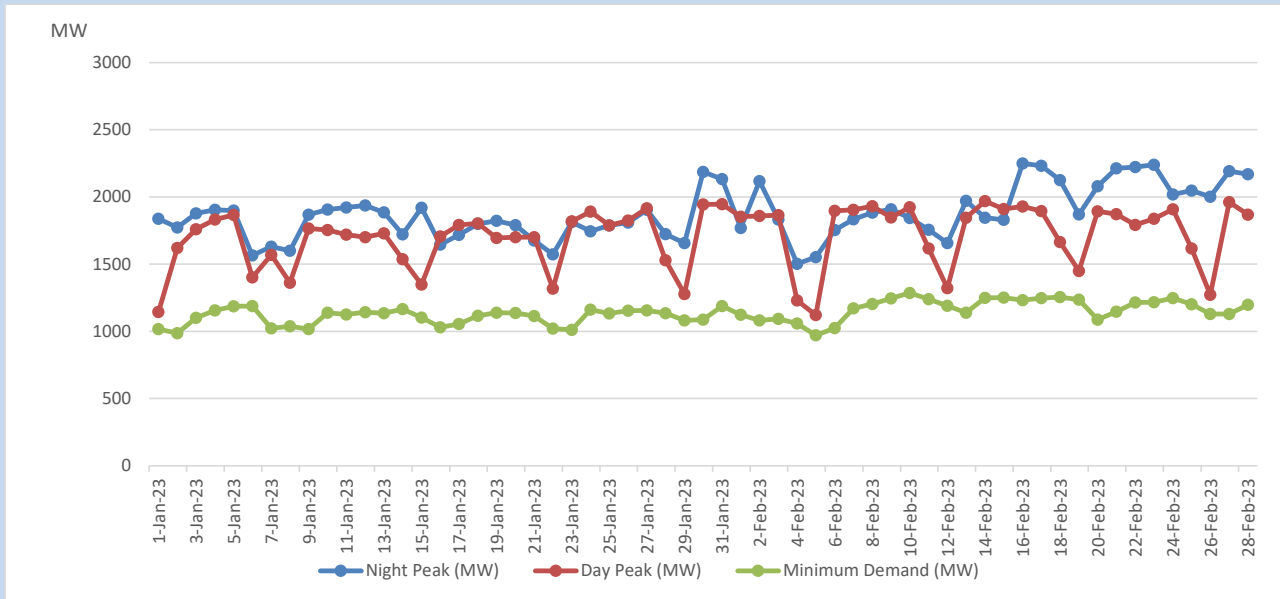


## Variation of Major Hydro Reservoir Levels in the current year (GWh)





## Variation of Demand during the current year

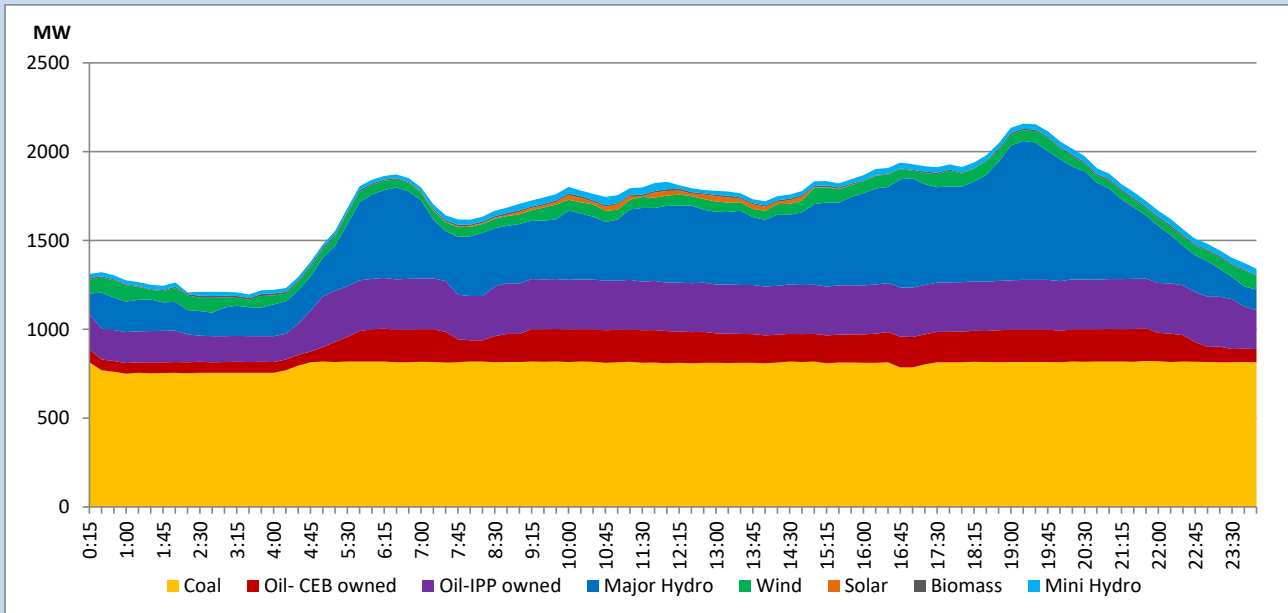


The above figures are excluding contribution from roof top solar, non telemetered solar and mini hydro plants

## Daily Load Curve

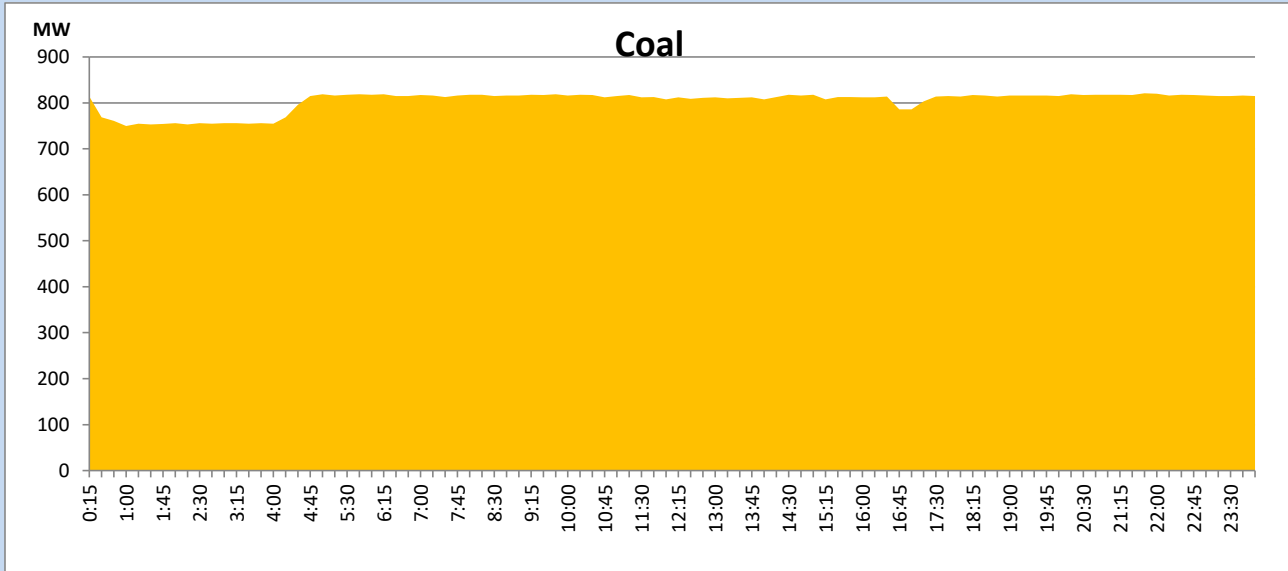
February 28, 2023

Solar and wind data is based on Telemetered Power Stations only



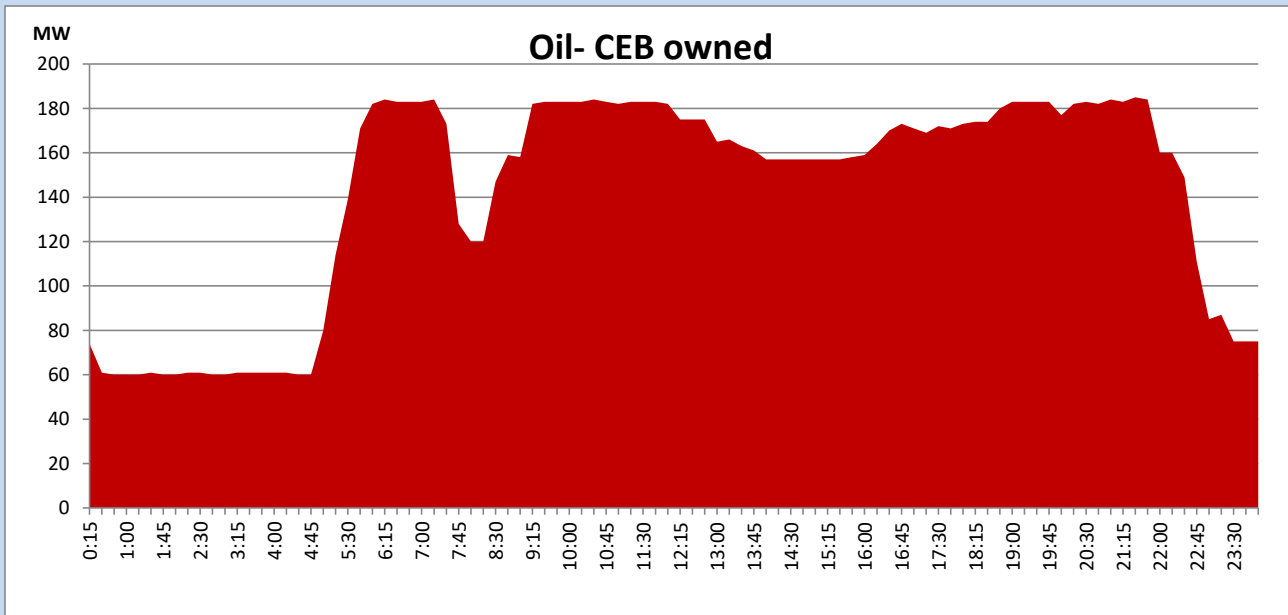
## Coal Generation during

February 28, 2023



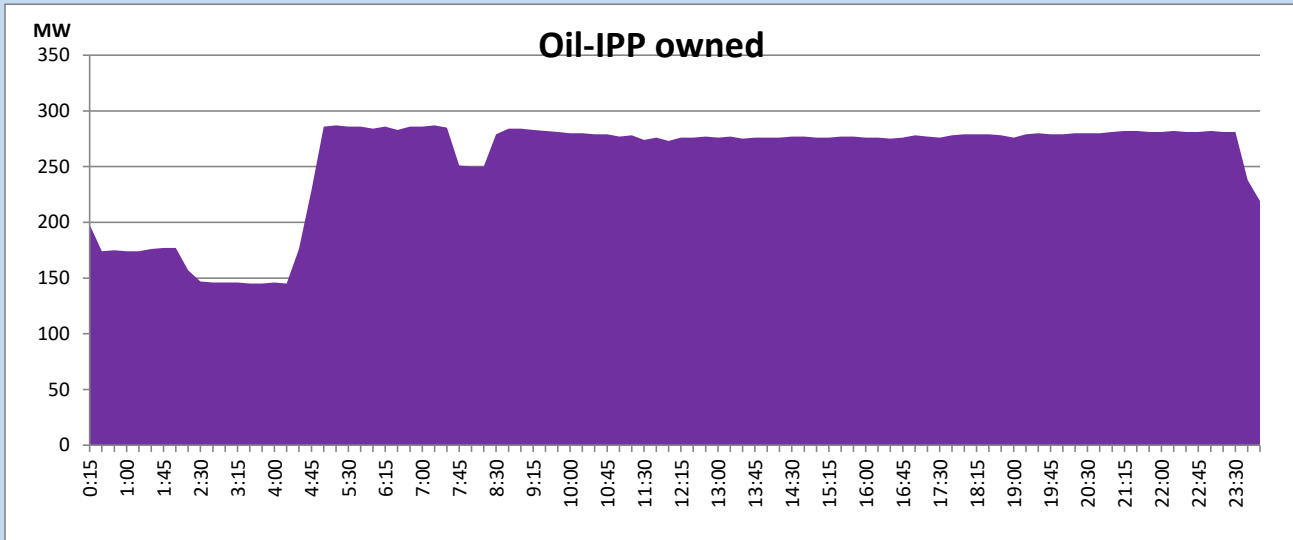
## CEB Oil Plant Generation during

February 28, 2023



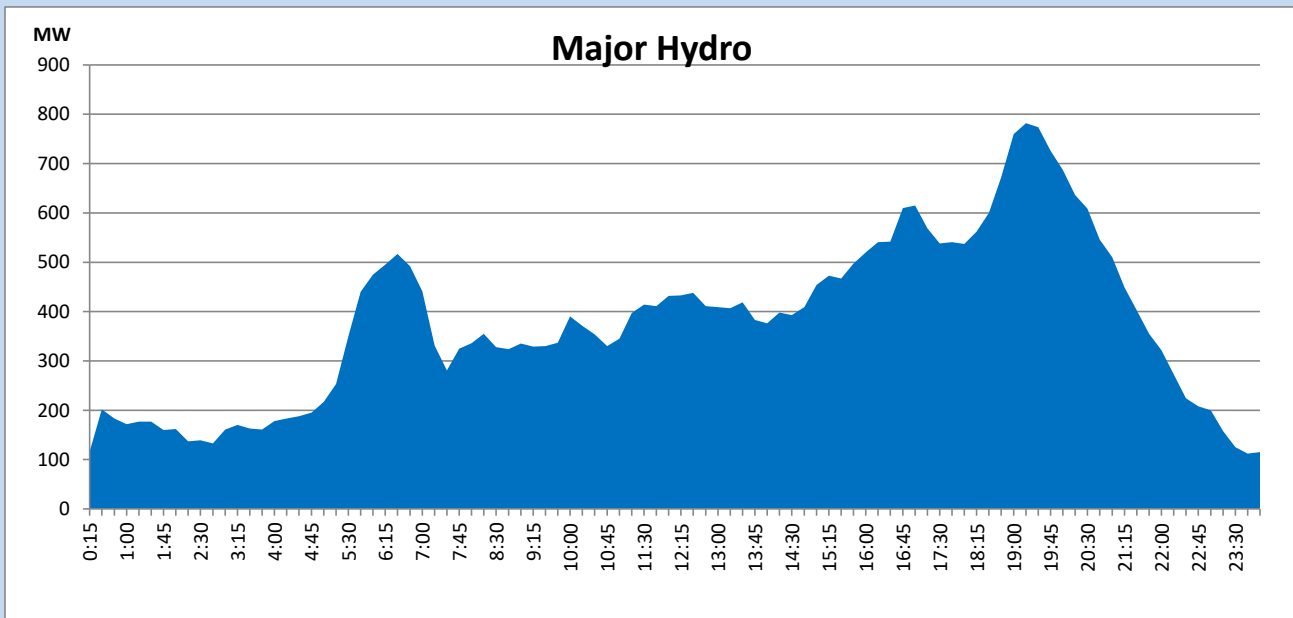
IPP Oil Plant Generation during

February 28, 2023



Major Hydro Generation during

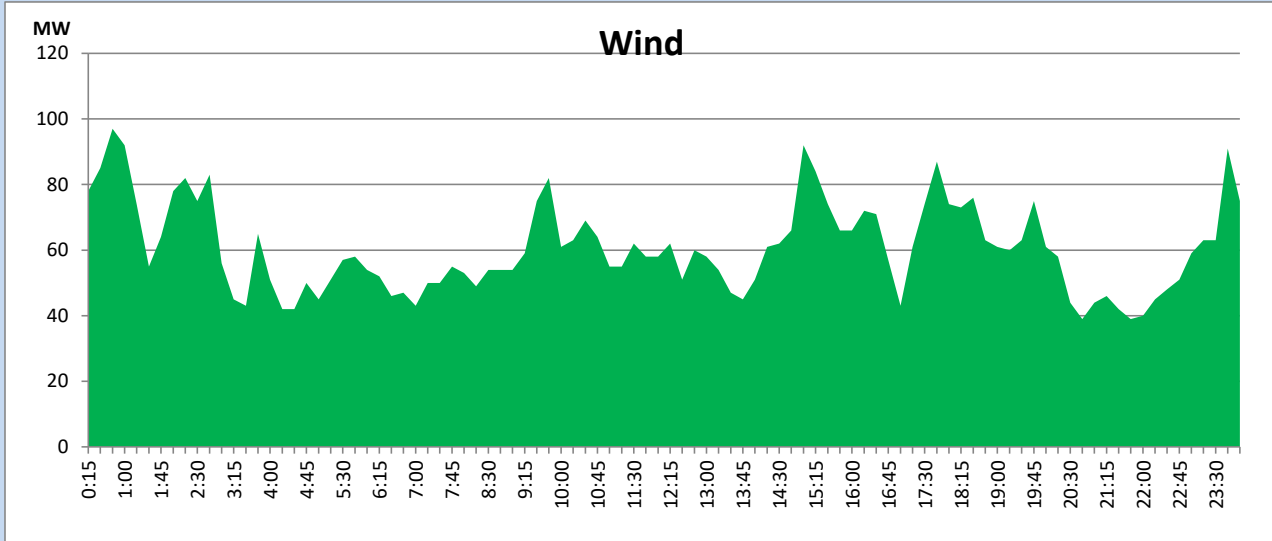
February 28, 2023



## Wind Generation during

February 28, 2023

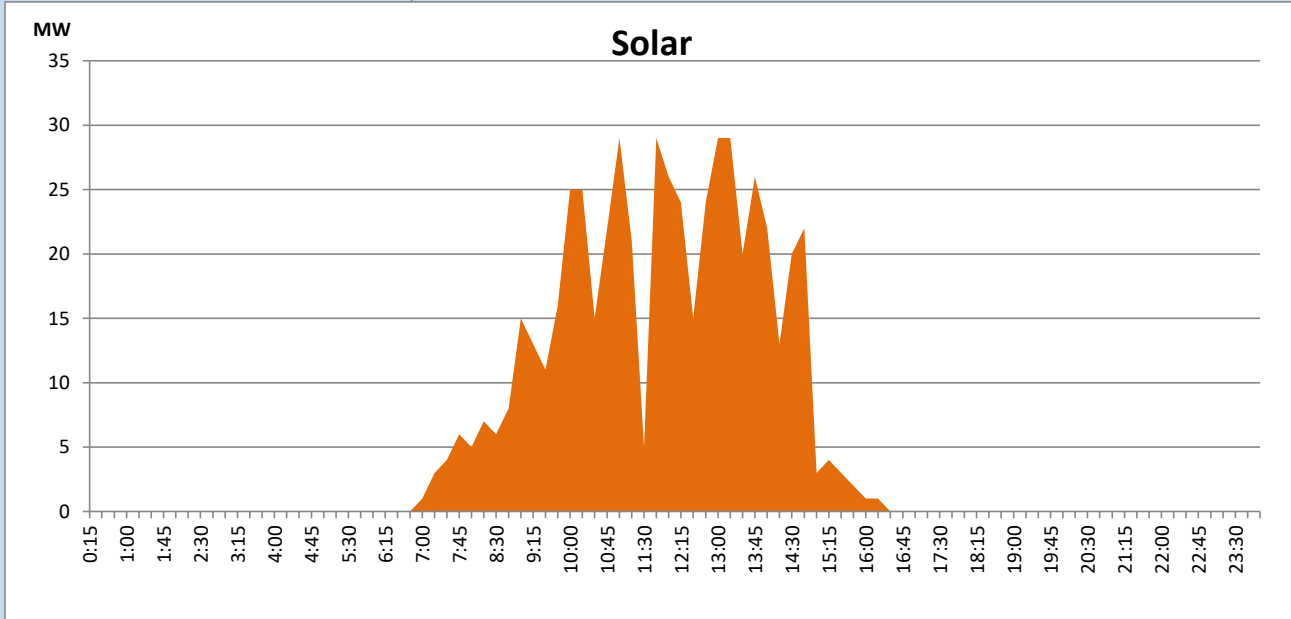
Based on Telemetered Power Stations only



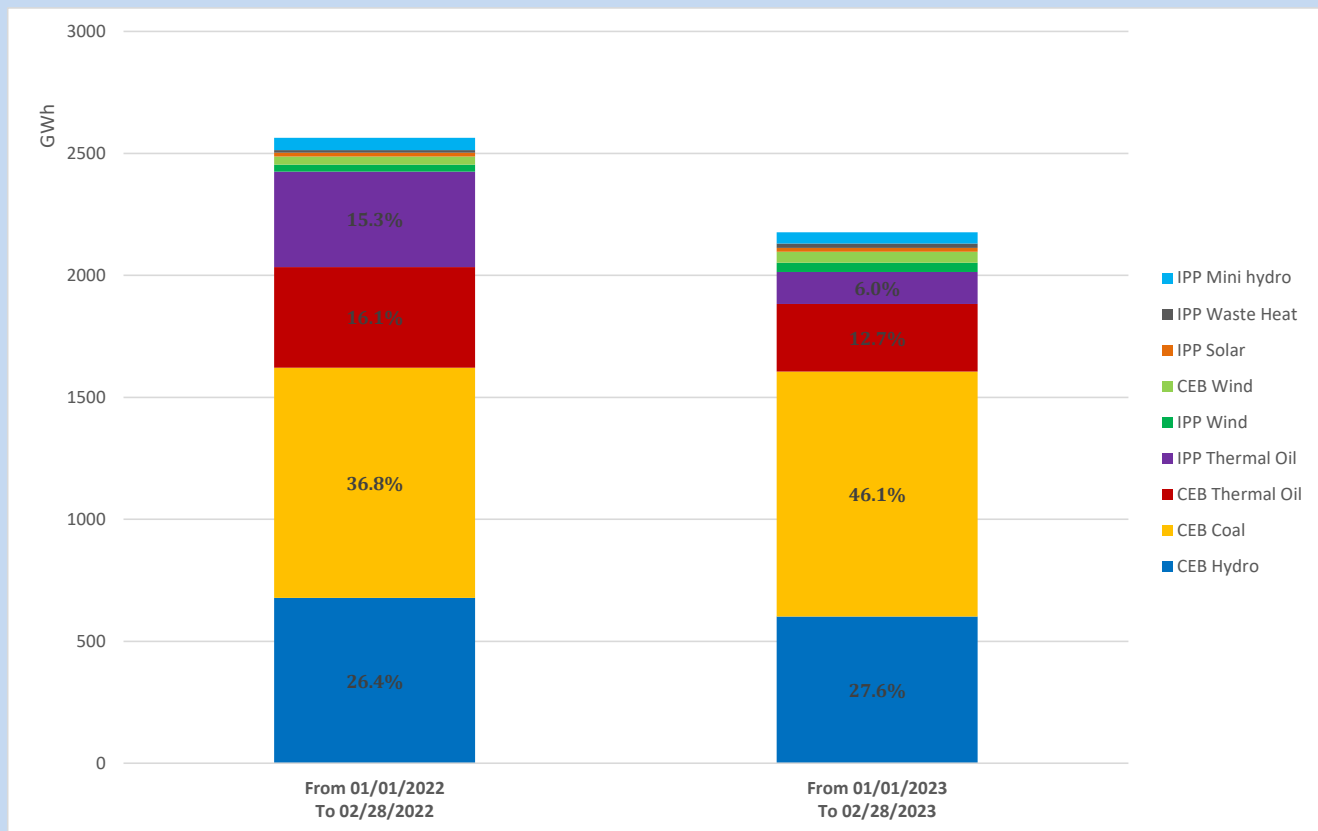
## Solar Generation during

February 28, 2023

Based on Telemetered Power Stations only



## Cumulative Dispatch Comparison with Last Year



## Thermal Plant Fuel types

Power Station	Primary Fuel
CEB Thermal	
Sapugaskanda 1	Heavy Fuel
Sapugaskanda 2	Heavy Fuel
Kelanitissa Small Gas Turbines	Auto Diesel
GT 7 - Kelanitissa	Auto Diesel
Kelanitissa CCY	Naphtha or Diesel
Lakvijaya 1	Coal
Lakvijaya 2	Coal
Lakvijaya 3	Coal
Uthuru Janani	Heavy Fuel
Barge CEB	Heavy Fuel

Power Station	Primary Fuel
Private Thermal	
West Coast	Auto Diesel / Heavy Fuel

### Major Incidents reported during the day

February 28, 2023

- 1). Matara 132/33 kV T/F 02 was energized at 12:30hrs which switched off from 33 kV side on 27.02.2023 due to a hot spot .
- 2). Old Laxapana - Wimalasurendra GSS 132 kV cct 01 was restored at 12:42hrs which could not be switched on due to a VT failure at Wimalasurendra GSS after the planned RM on 27.02.2023.