

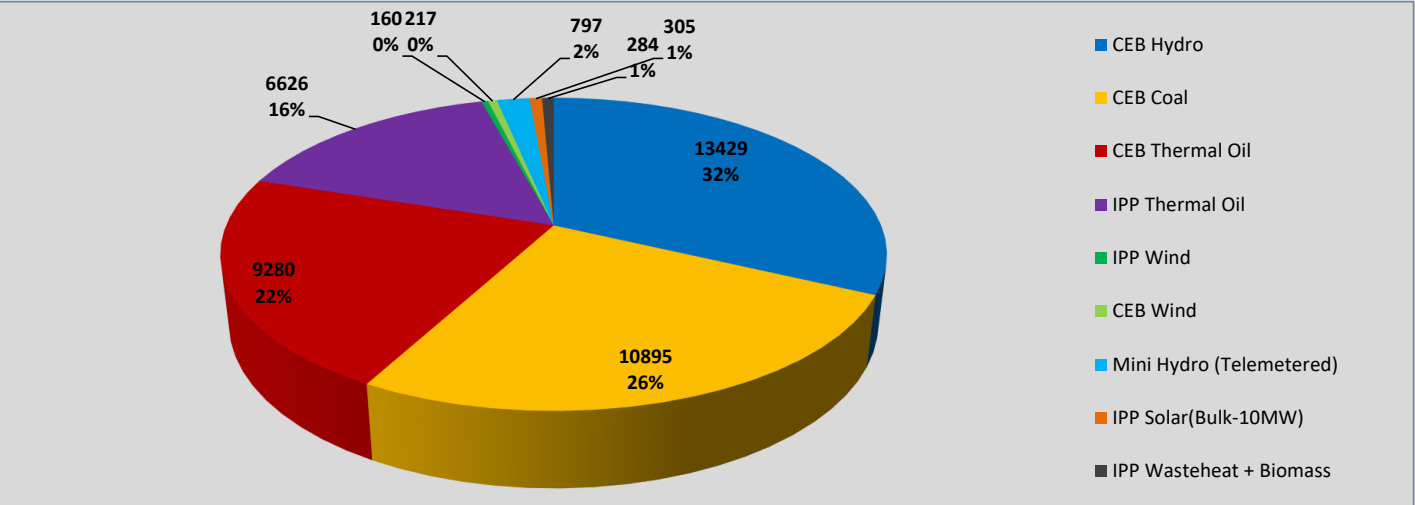
Generation and Reservoirs Statistics

March 23, 2023



PUBLIC UTILITIES COMMISSION OF SRI LANKA

Daily Generation Mix in MWh



Total Generation (Excluding estimated figures) = **41,993 MWh**

Estimated figures of CEB generation report

Estimated unserved energy = 0.00 GWh
Estimated Mini Hydro (Non telemetered) = 513 MWh
Estimated IPP Solar PV (Bulk 1-10MW) = 304 MWh
Estimated Solar Roof Top PV = 1490 MWh

Cumulative Dispatch

Following data excludes the contribution from roof top solar, non telemetered solar and mini hydro plants

For Current Month

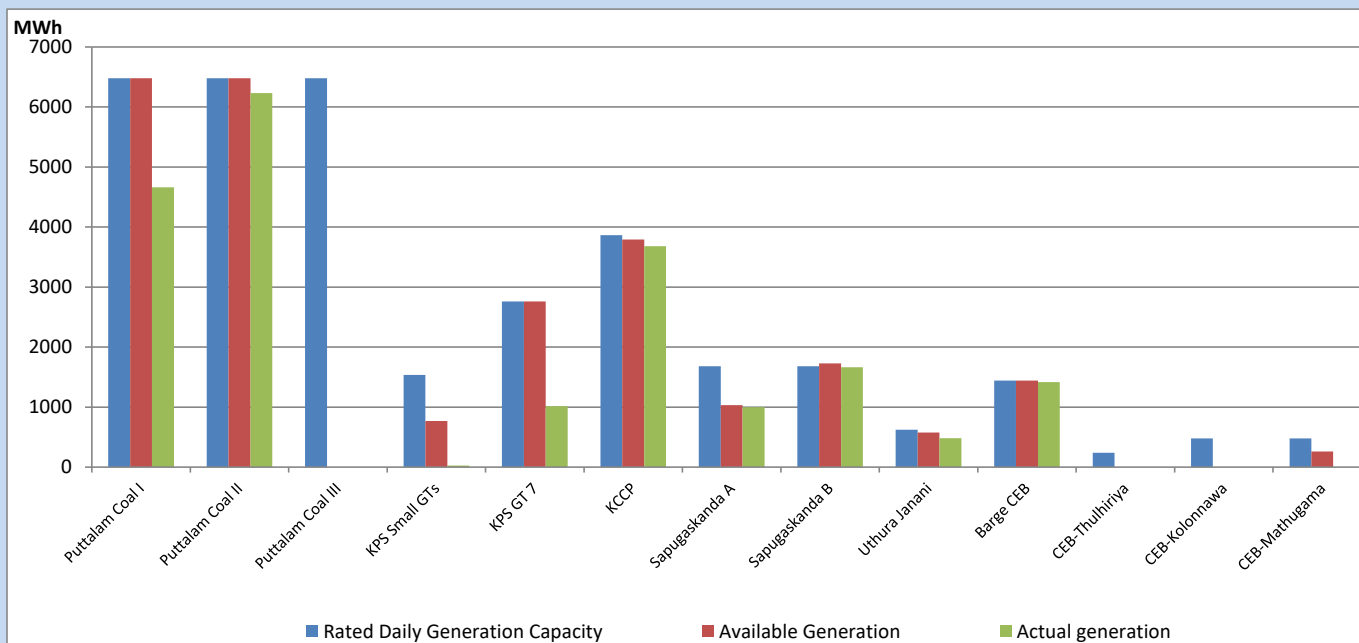
Category	Dispatch (GWh)	
CEB Hydro	212	23.39%
CEB Coal	412	45.36%
CEB Thermal Oil	135	14.91%
IPP Thermal	91	10.05%
SPP Wind	12	1.29%
CEB Wind	15	1.62%
Mini Hydro (Telemetered)	18	1.97%
IPP Solar(Bulk-10MW)	6	0.69%
IPP Wasteheat + BMP	7	0.73%
Total	908	

For Current Year

Category	Dispatch (GWh)	
CEB Hydro	814	26.39%
CEB Coal	1,416	45.92%
CEB Thermal Oil	412	13.37%
IPP Thermal	222	7.21%
SPP Wind	50	1.61%
CEB Wind	59	1.92%
Mini Hydro (Telemetered)	64	2.07%
IPP Solar(Bulk-10MW)	23	0.74%
IPP Wasteheat	24	0.77%
Total	3,084	

CEB owned Thermal Plant Dispatch

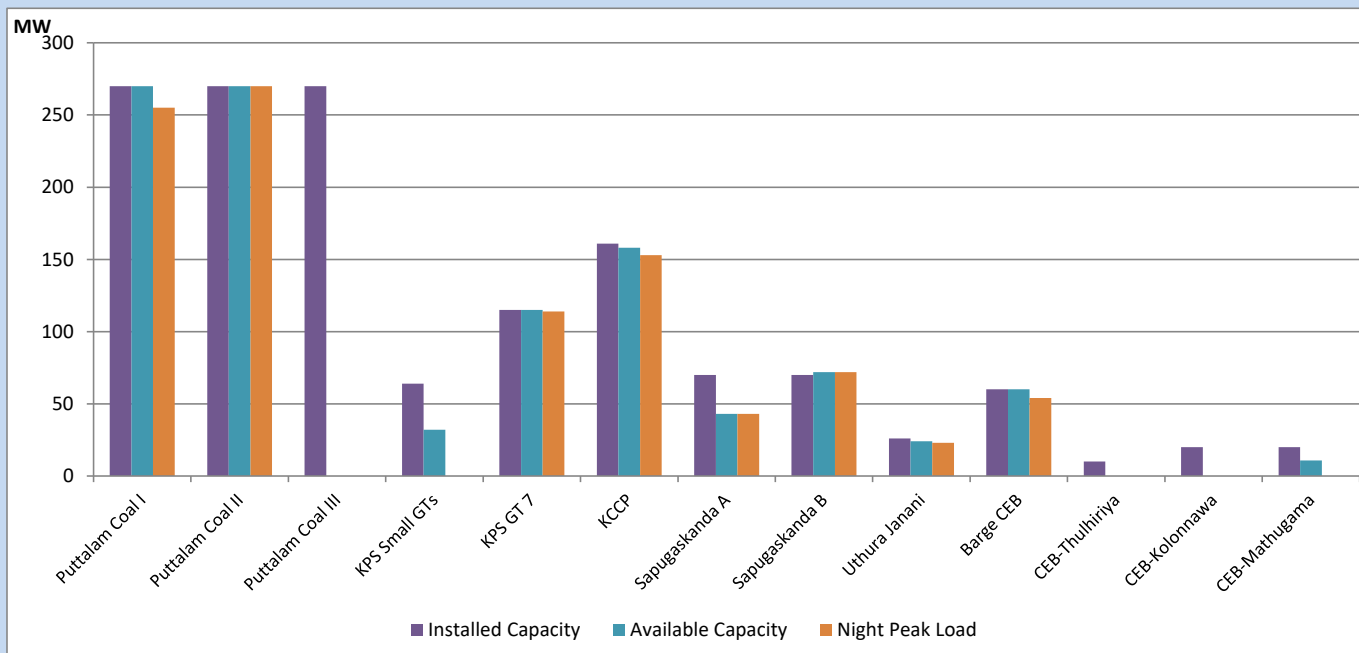
March 23, 2023



Available Generation is estimated based on plant availability at 6.00am on

March 24, 2023

CEB owned Thermal Plant Loading at the Night Peak

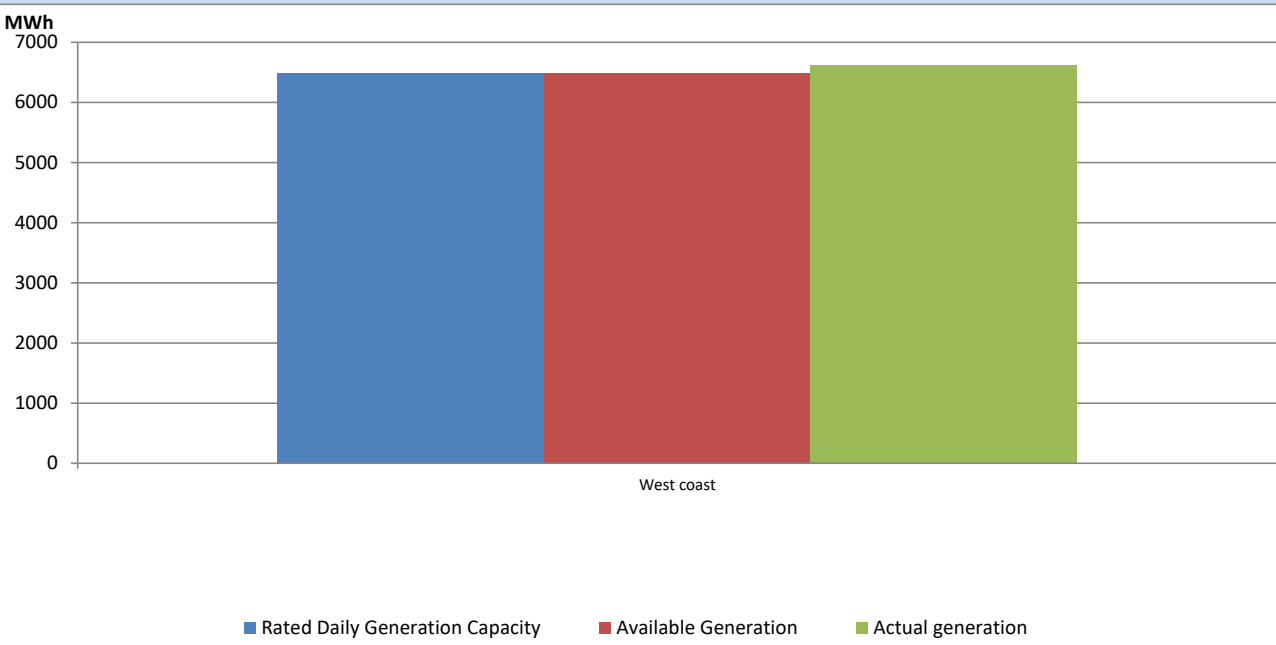


Note- Plant availability is recorded at 6.00 am on

March 24, 2023

IPP owned Thermal Plant Dispatch

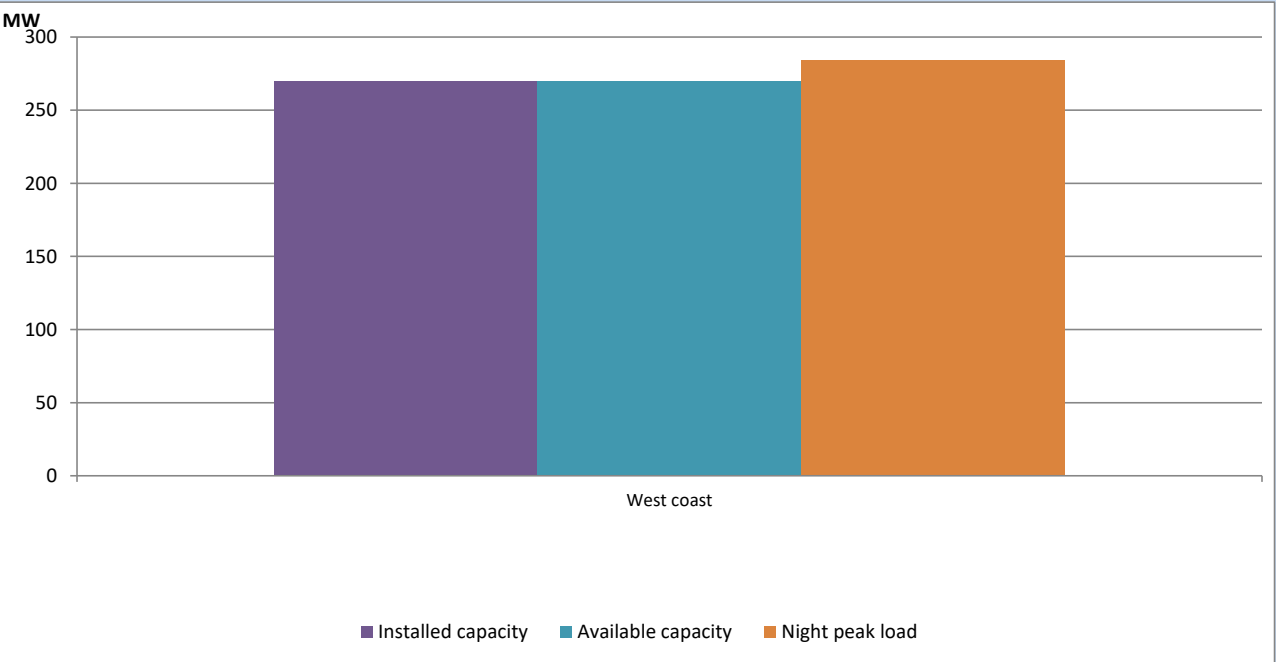
March 23, 2023



Available Generation is estimated based on plant availability at 6.00am on

March 24, 2023

IPP owned Thermal Plant Loading at the Night Peak

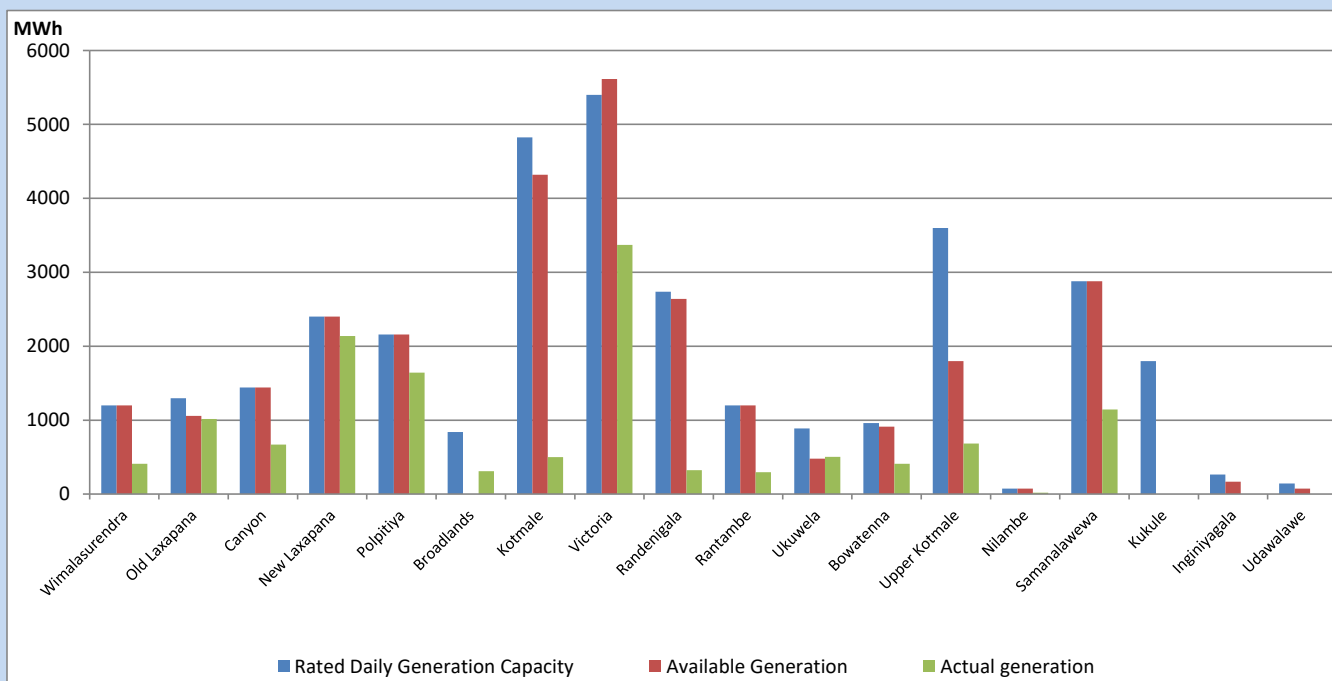


Note- Plant avilability is recorded at 6.00 am on

March 24, 2023

Major Hydro Plant Dispatch

March 23, 2023

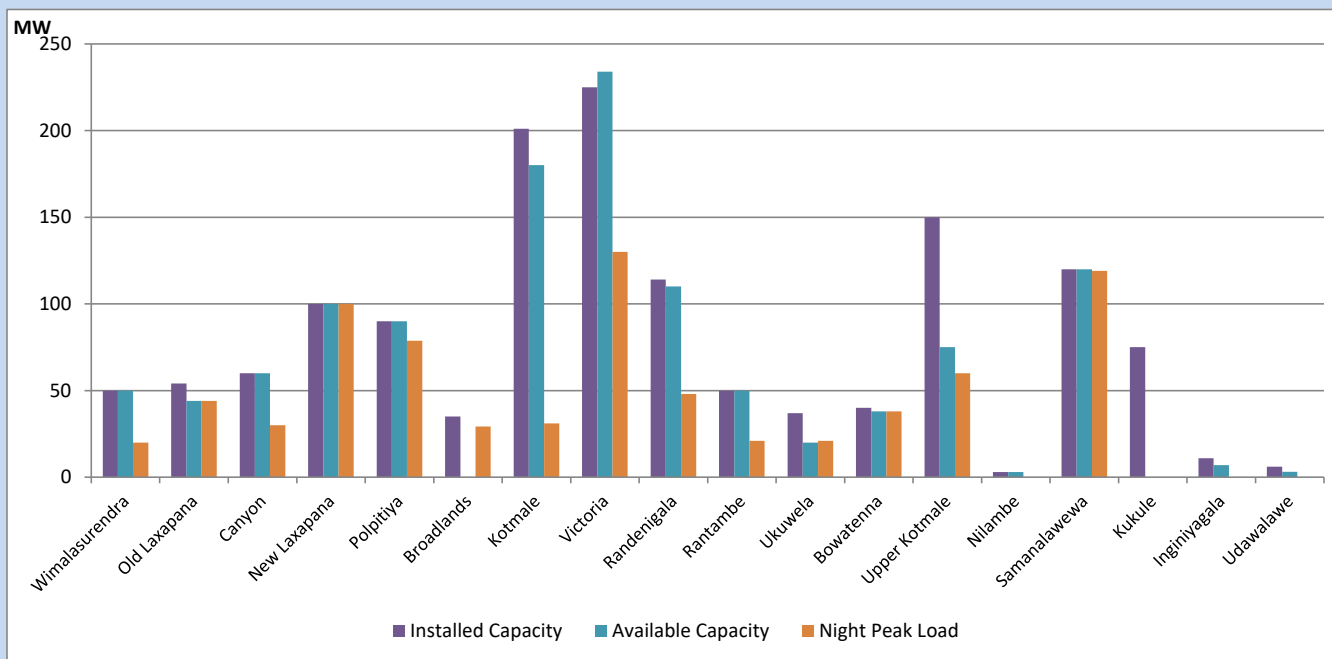


Available Generation is estimated based on plant availability at 6.00am on
Broadlands power plant is operating in the Commissioning Stage

March 24, 2023

Major Hydro Plant Loading at Night Peak

March 23, 2023



Note- Plant availability is recorded at 6.00 am on

March 24, 2023

Broadlands power plant is operating in the Commissioning Stage

Summary of Major Plant performance

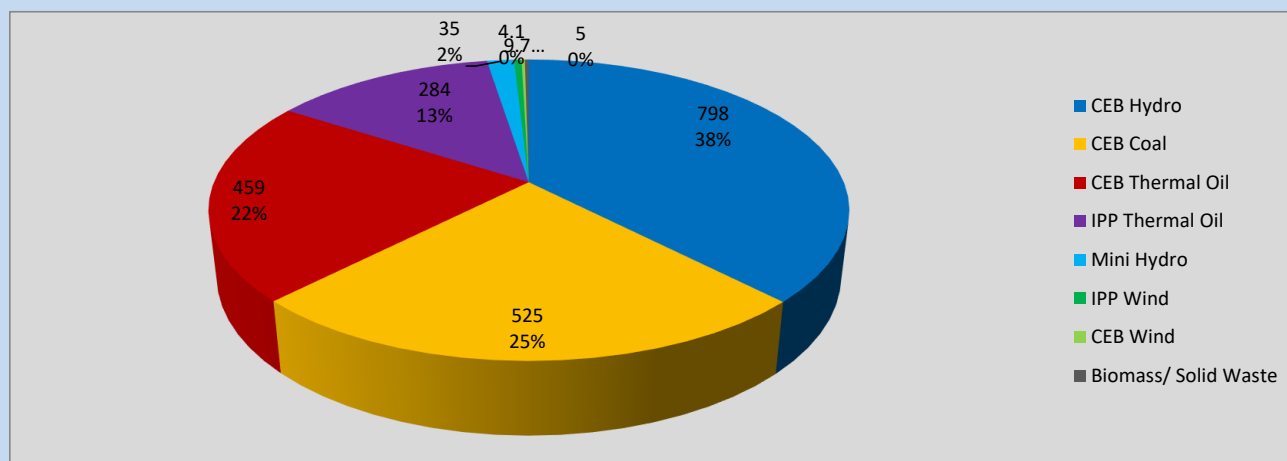
Plant	Installed Capacity	Plant Availability	Night peak Load	Plant Dispatch
	(MW)	(MW)	(MW)	(MWh)
Wimalasurendra	50	50	20	410
Old Laxapana	54	44	44	1,014
Canyon	60	60	30	670
New Laxapana	100	100	100	2,136
Polpitiya	90	90	79	1,642
Broadlands	35	0	29	310
Kotmale	201	180	31	500
Victoria	225	234	130	3,371
Randenigala	114	110	48	323
Rantambe	50	50	21	297
Ukuwela	37	20	21	504
Bowatenna	40	38	38	408
Upper Kotmale	150	75	60	682
Nilambe	3	3	0	18
Samanalawewa	120	120	119	1,144
Kukule	75	0	0	0
Inginiyagala	11	7	0	0
Udawalawe	6	3	0	0
Puttalam Coal I	270	270	255	4,663
Puttalam Coal II	270	270	270	6,232
Puttalam Coal III	270	0	0	0
KPS Small GTs	64	32	0	26
KPS GT 7	115	115	114	1,014
KCCP	161	158	153	3,681
Sapugaskanda A	70	43	43	997
Sapugaskanda B	70	72	72	1,663
Uthura Janani	26	24	23	482
Barge CEB	60	60	54	1,417
CEB-Thulhiriya	10	0	0	0
CEB-Kolonnawa	20	0	0	0
CEB-Mathugama	20	11	0	0
ACE Matara	24	0	0	0
Asia Power	50	0	0	0
Sojitz Kelanitissa	163	0	0	0
West Coast	270	270	284	6,626
Nothern Power	36	0	0	0
ACE Embilipitiya	93	0	0	0
Total	3,483	2,509	2,092	41,993

Plant availability is the availability recorded at 6 am on

March 24, 2023

Contribution to the Night Peak in MW

March 23, 2023

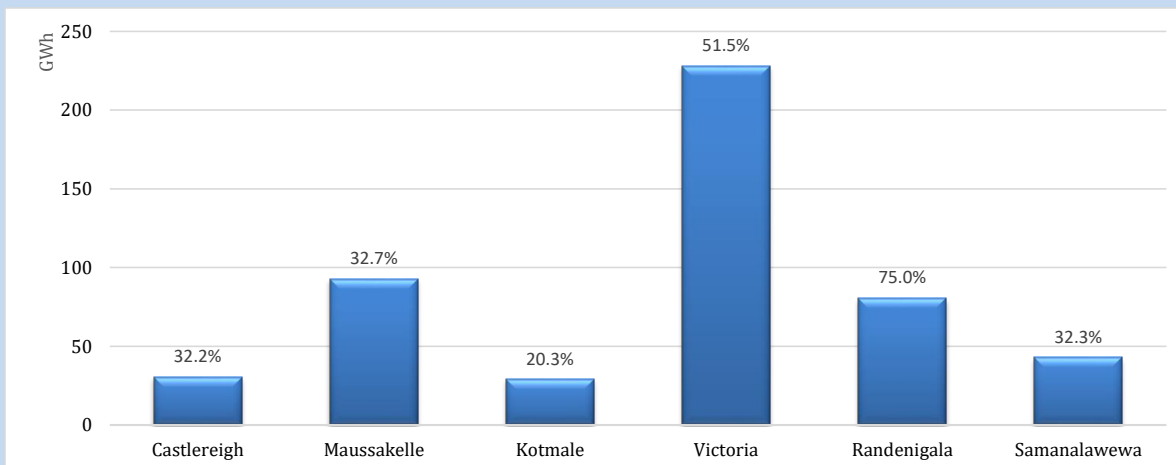


Night Peak*	2,120 MW
Day Peak	2,077 MW
Minimum Demand	1,308 MW

Above figures are excluding contribution from roof top solar, non telemetered solar and mini hydro plants

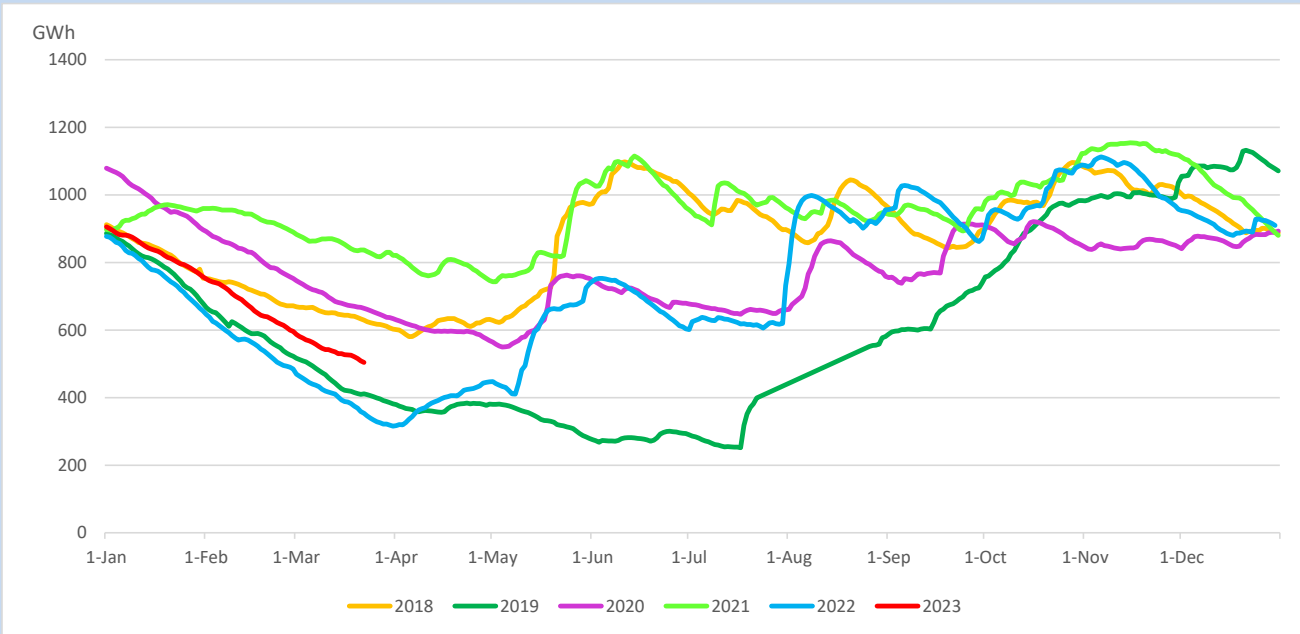
Reservoir Levels -

as at 06.00 Hr on March 24, 2023

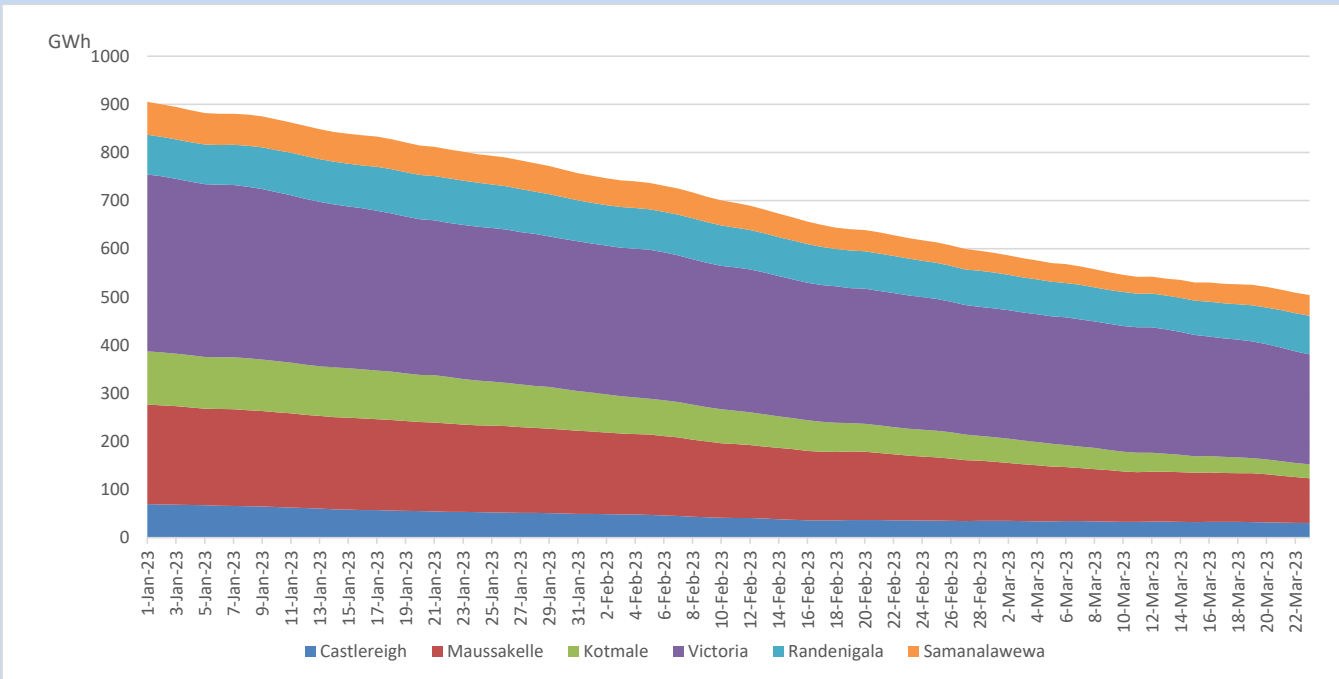


Total Reservoir Level	504.1 GWh
% of Total capacity	41.8%

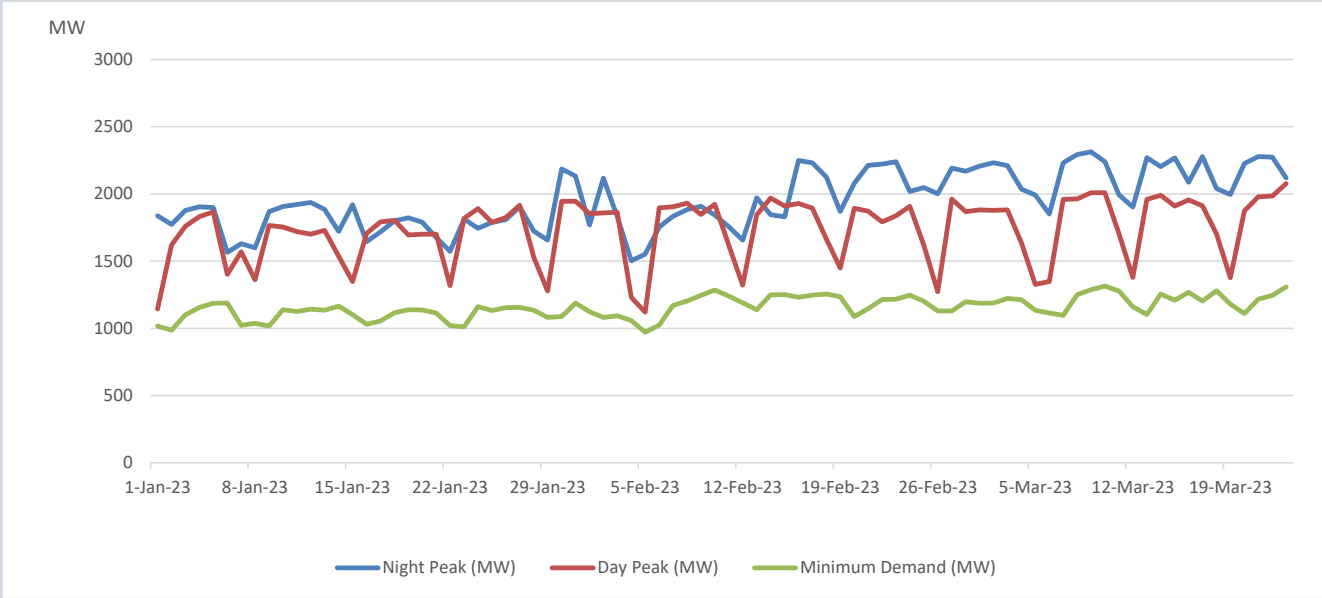
Comparison of Total Reservoir Storage Levels with Past Years



Variation of Major Hydro Reservoir Levels in the current year (GWh)



Variation of Demand during the current year

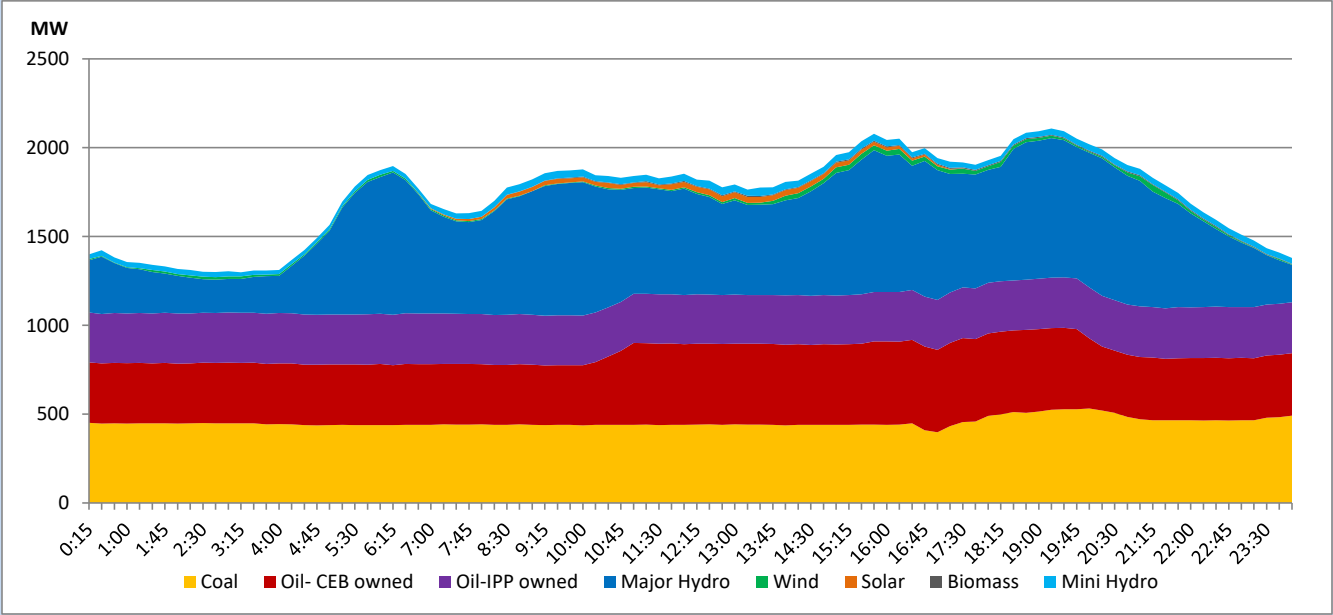


The above figures are excluding contribution from roof top solar, non telemetered solar and mini hydro plants

Daily Load Curve

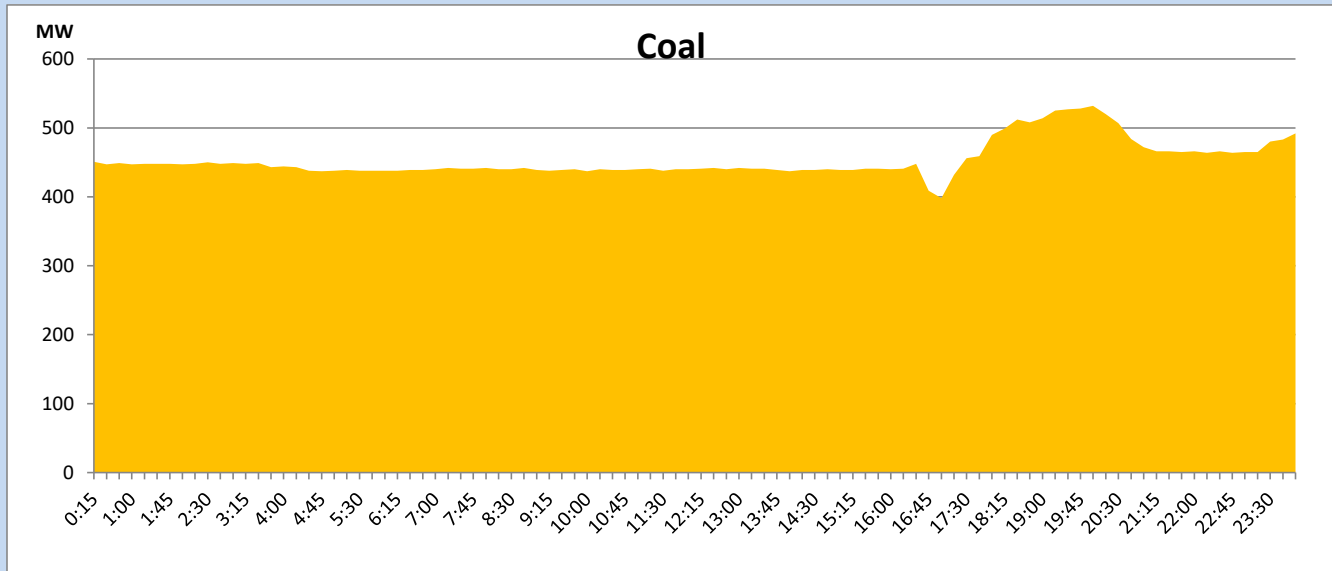
March 23, 2023

Solar and wind data is based on Telemetered Power Stations only



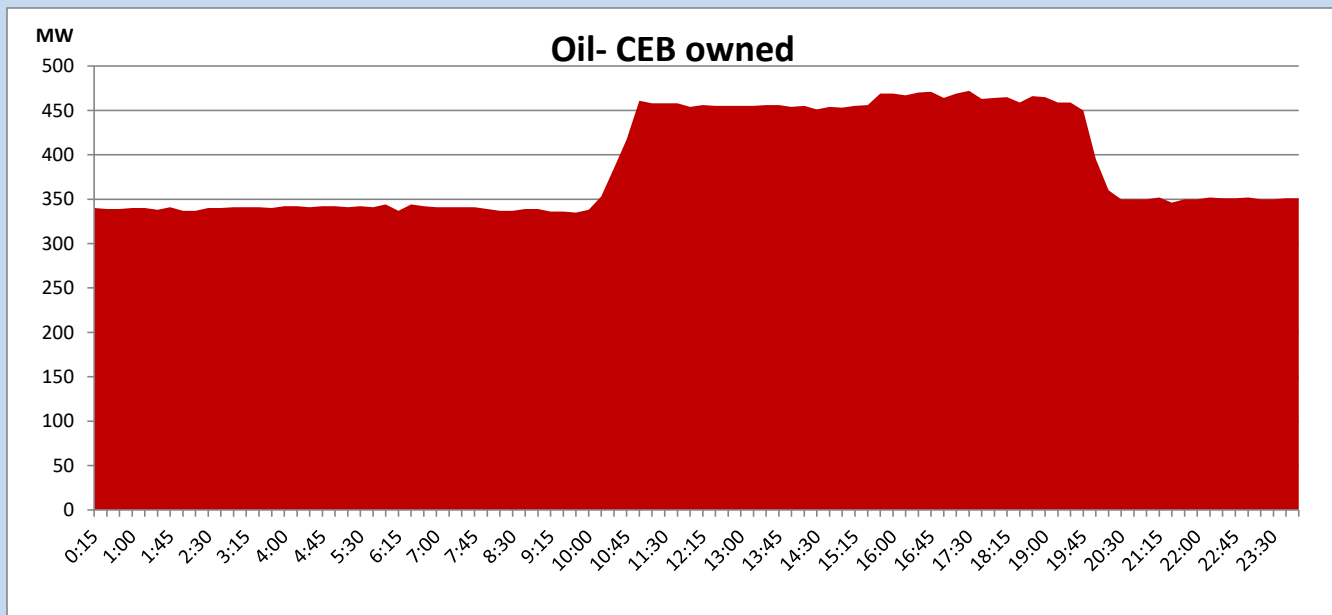
Coal Generation during

March 23, 2023



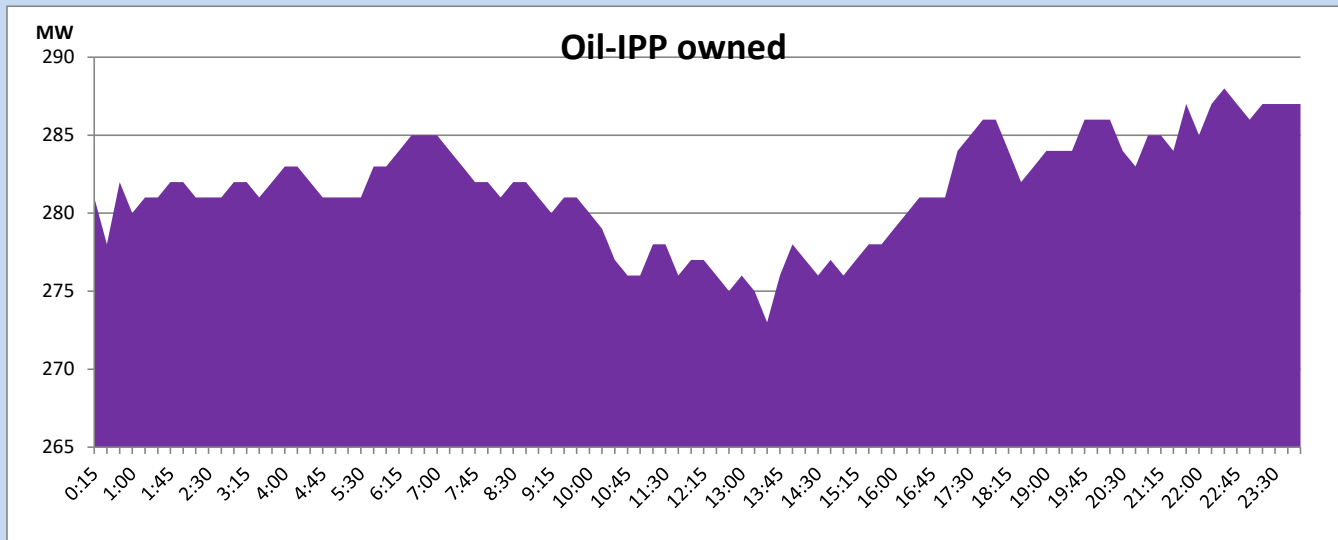
CEB Oil Plant Generation during

March 23, 2023



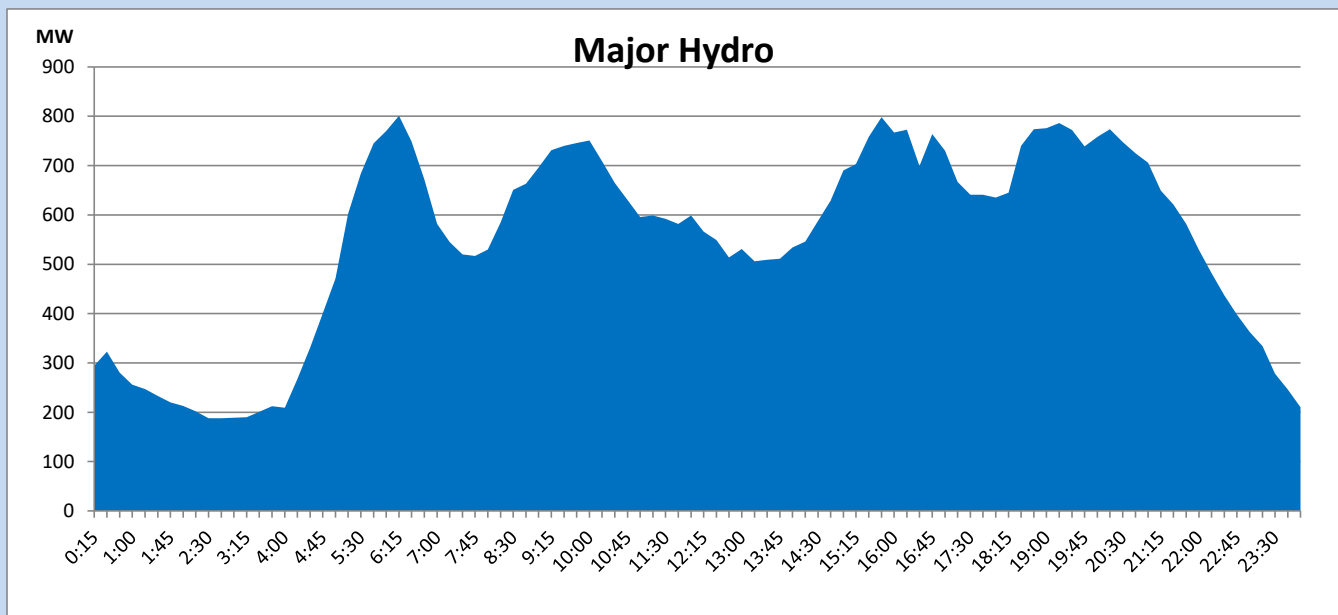
IPP Oil Plant Generation during

March 23, 2023



Major Hydro Generation during

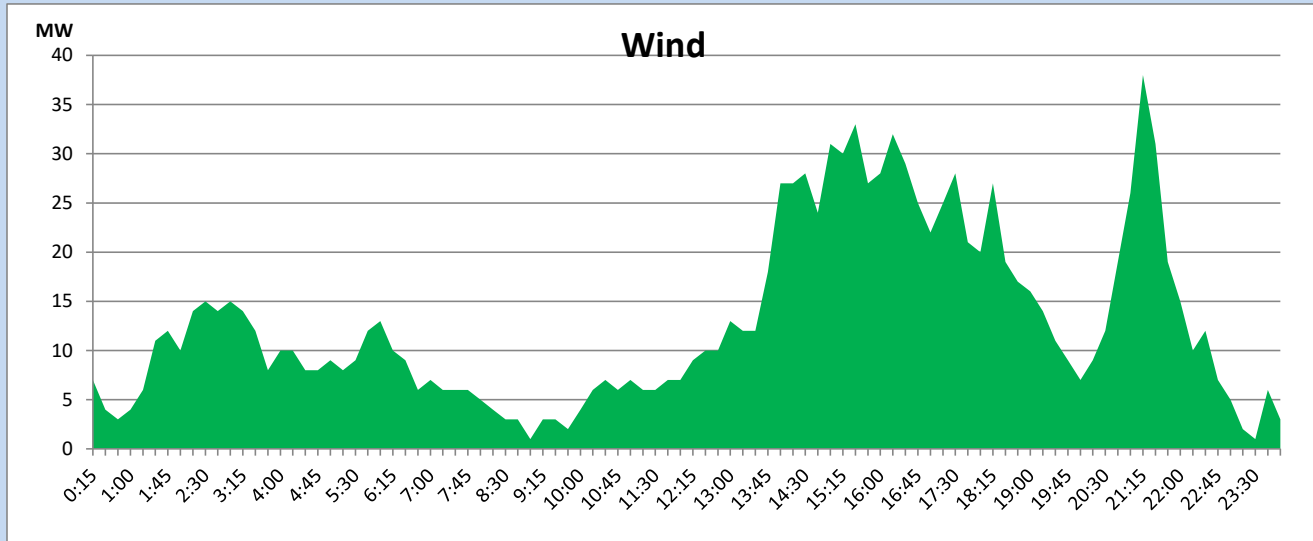
March 23, 2023



Wind Generation during

March 23, 2023

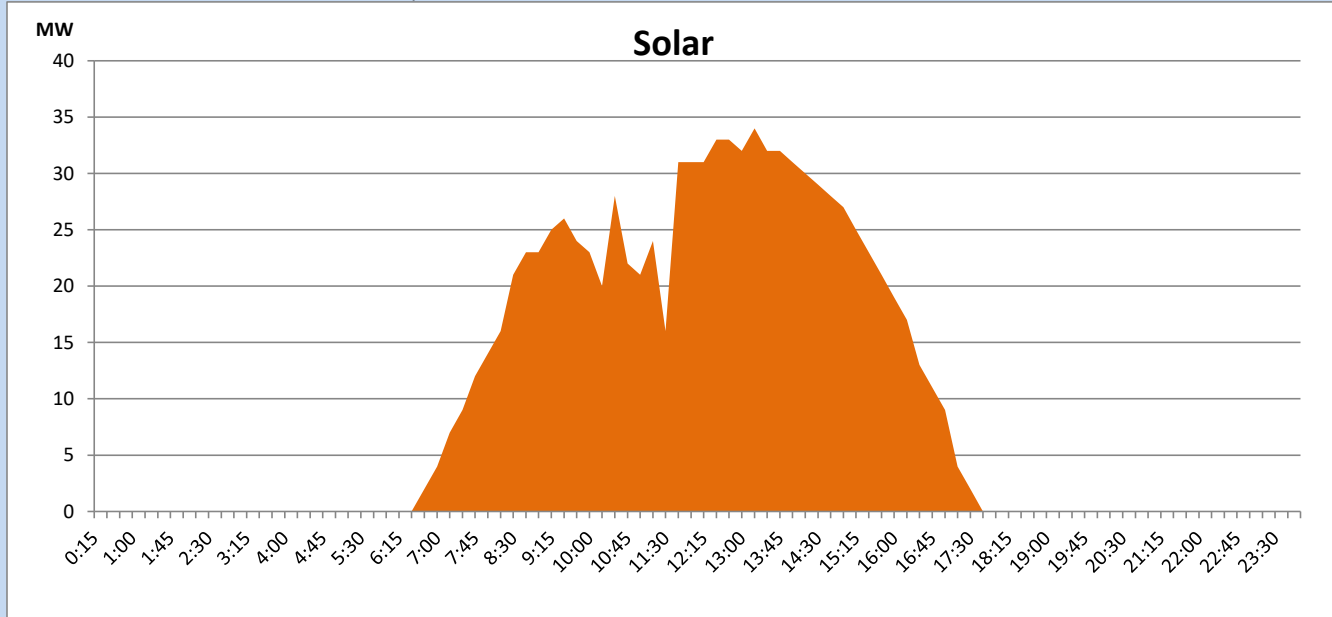
Based on Telemetered Power Stations only



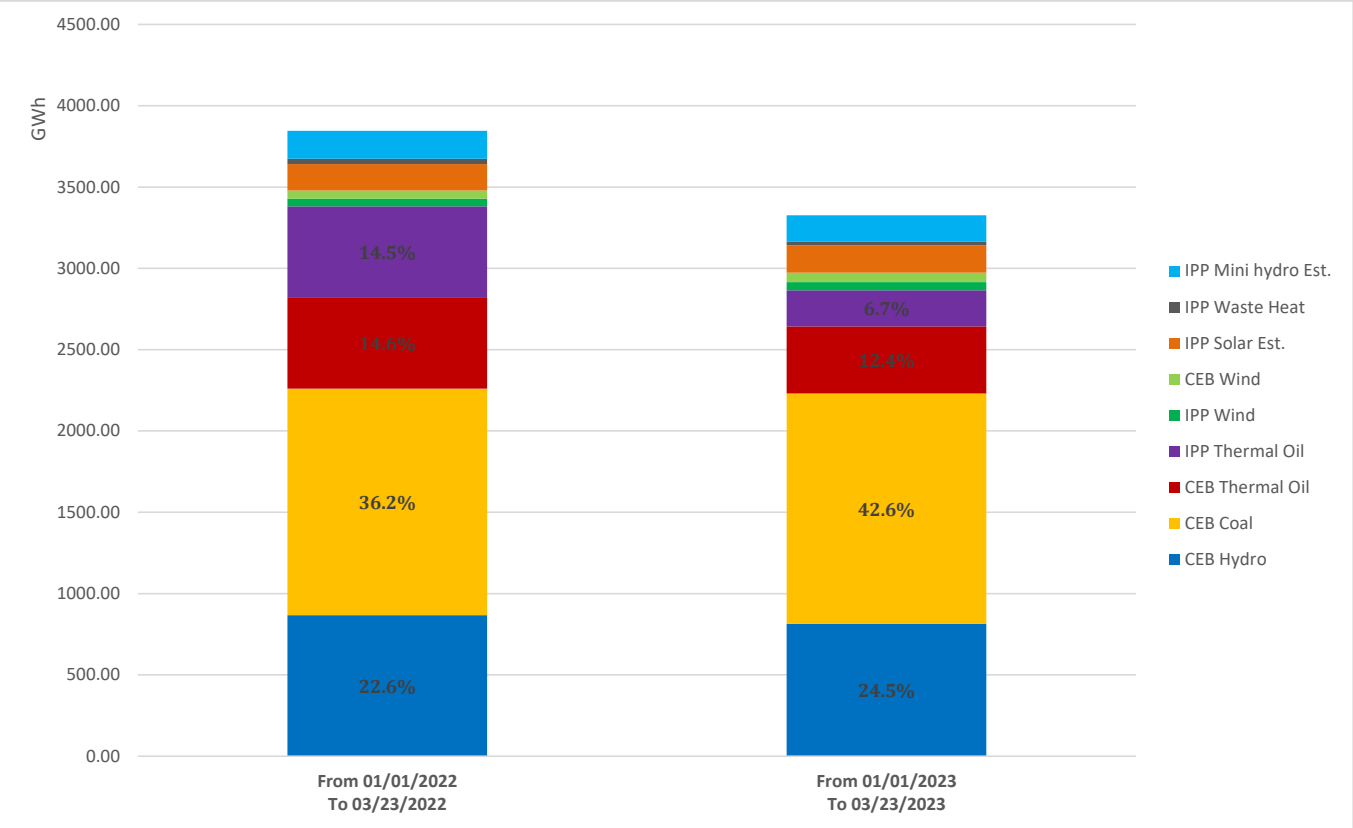
Solar Generation during

March 23, 2023

Based on Telemetered Power Stations only



Cumulative Dispatch Comparison with Last Year



The above figures are including contribution from roof top solar, non telemetered solar and mini hydro plants

Thermal Plant Fuel types

Power Station	Primary Fuel
CEB Thermal	
Sapugaskanda 1	Heavy Fuel
Sapugaskanda 2	Heavy Fuel
Kelanitissa Small Gas Turbines	Auto Diesel
GT 7 - Kelanitissa	Auto Diesel
Kelanitissa CCY	Naphtha or Diesel
Lakvijaya 1	Coal
Lakvijaya 2	Coal
Lakvijaya 3	Coal
Uthuru Janani	Heavy Fuel
Barge CEB	Heavy Fuel

Power Station	Primary Fuel
Private Thermal	
West Coast	Auto Diesel / Heavy Fuel

Major Incidents reported during the day

March 23, 2023

- 1) New Polp-Thul-Athuru cct tripped and A/R from Athurugiriya end and tripped from Thulhiriya end at 12:58 hrs due to the operation of distance protection. New Polp-Thul-Athuru cct was restored at 13:12hrs.
- 2) WPS unit 02 tripped at 9:43hrs rejecting 10MW from the system with the indication of “Upper bearing pad temperature too high”. unit 02 made available at 10.38hrs.
- 3) New Galle – Balangoda cct tripped and A/R from both ends at 14.37 hrs due to the operation of distance protection.
- 4) New Polp-Thul-Athuru cct tripped and A/R from Athurugiriya end and tripped from Thulhiriya end at 16.14 hrs due to the operation of distance protection. At the same time Polp-Thul-Athuru cct tripped from Polpitiya end due to the operation of distance protection. Both ccts were restored at 16.24hrs.
- 5) LVPS Unit 01 run backed at 16:20hrs to 120MW(net) due to ID fan failure. LVPS 01 reached 270MW (net) at 19.55hrs. LVPS Unit 02 de-loaded to 200MW (net) at 21.09hrs due to the CW pump intake block. LVPS-2 reached 270MW (net) at 00.55hrs (24/03/2023).