

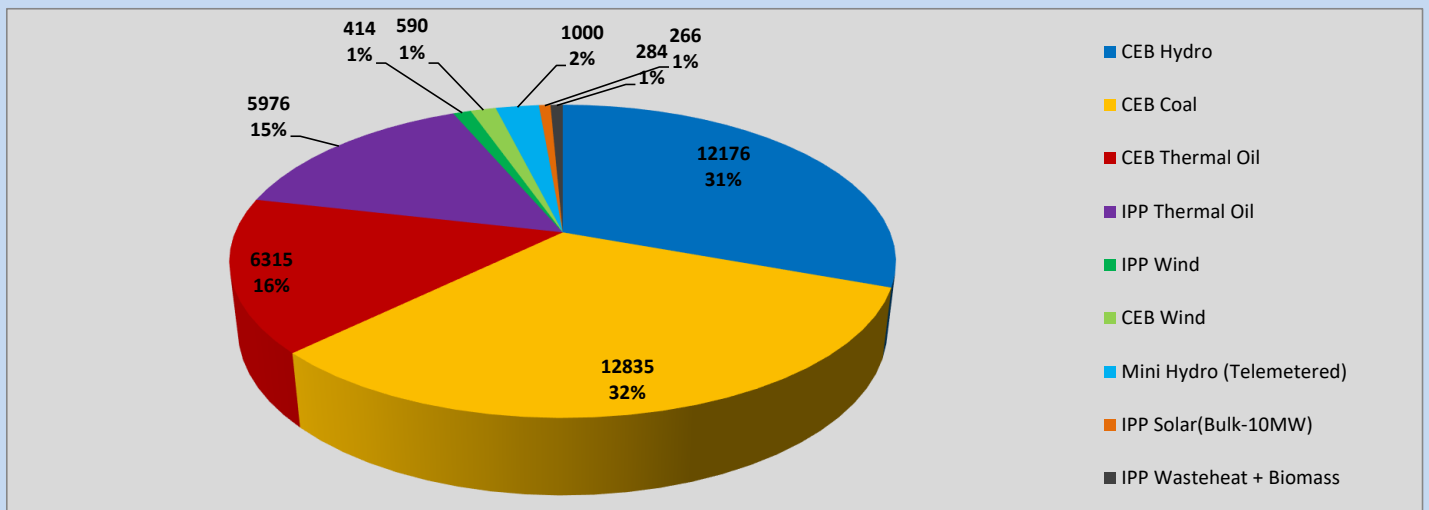
# Generation and Reservoirs Statistics

March 20, 2023



PUBLIC UTILITIES COMMISSION OF SRI LANKA

## Daily Generation Mix in MWh



Total Generation (Excluding estimated figures) =



**39,856 MWh**

### Estimated figures of CEB generation report

Estimated unserved energy = 0.00 GWh  
 Estimated Mini Hydro (Non telemetered) = 310 MWh  
 Estimated IPP Solar PV (Bulk 1-10MW) = 304 MWh  
 Estimated Solar Roof Top PV = 1490 MWh

## Cumulative Dispatch

Following data excludes the contribution from roof top solar, non telemetered solar and mini hydro plants

### For Current Month

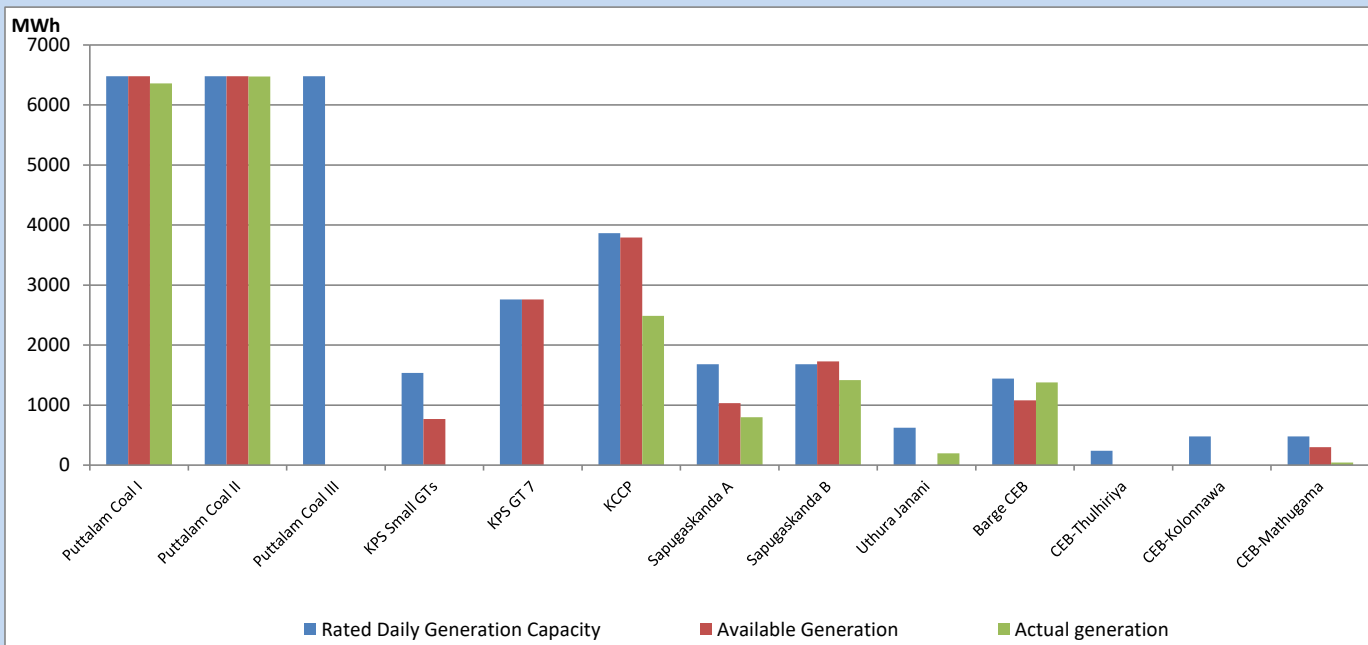
Category	Dispatch (GWh)	Percentage
CEB Hydro	173	22.09%
CEB Coal	376	48.02%
CEB Thermal Oil	111	14.16%
IPP Thermal	72	9.14%
SPP Wind	11	1.42%
CEB Wind	14	1.79%
Mini Hydro (Telemetered)	15	1.94%
IPP Solar(Bulk-10MW)	5	0.68%
IPP Wasteheat + BMP	6	0.75%
<b>Total</b>	<b>783</b>	

### For Current Year

Category	Dispatch (GWh)	Percentage
CEB Hydro	774	26.17%
CEB Coal	1,380	46.65%
CEB Thermal Oil	388	13.11%
IPP Thermal	203	6.85%
SPP Wind	49	1.66%
CEB Wind	58	1.98%
Mini Hydro (Telemetered)	61	2.07%
IPP Solar(Bulk-10MW)	22	0.74%
IPP Wasteheat	23	0.78%
<b>Total</b>	<b>2,959</b>	

## CEB owned Thermal Plant Dispatch

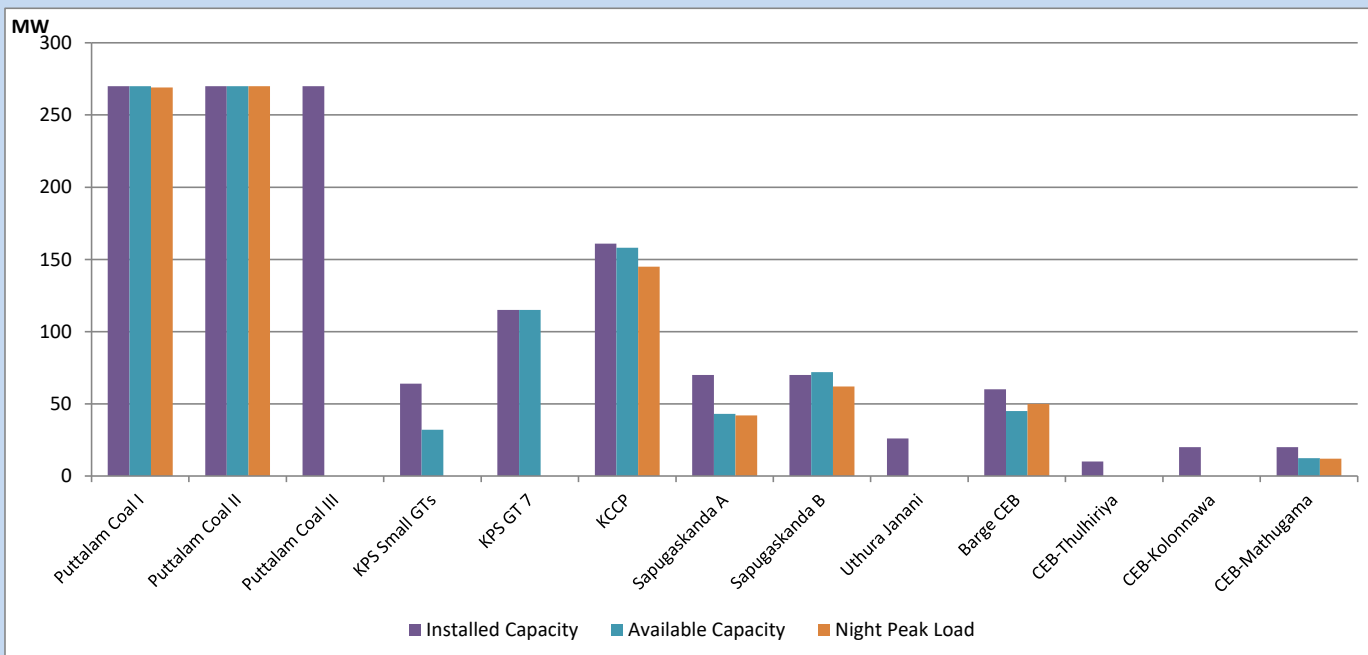
March 20, 2023



Available Generation is estimated based on plant availability at 6.00am on

March 21, 2023

## CEB owned Thermal Plant Loading at the Night Peak



Note- Plant availability is recorded at 6.00 am on

March 21, 2023

## IPP owned Thermal Plant Dispatch

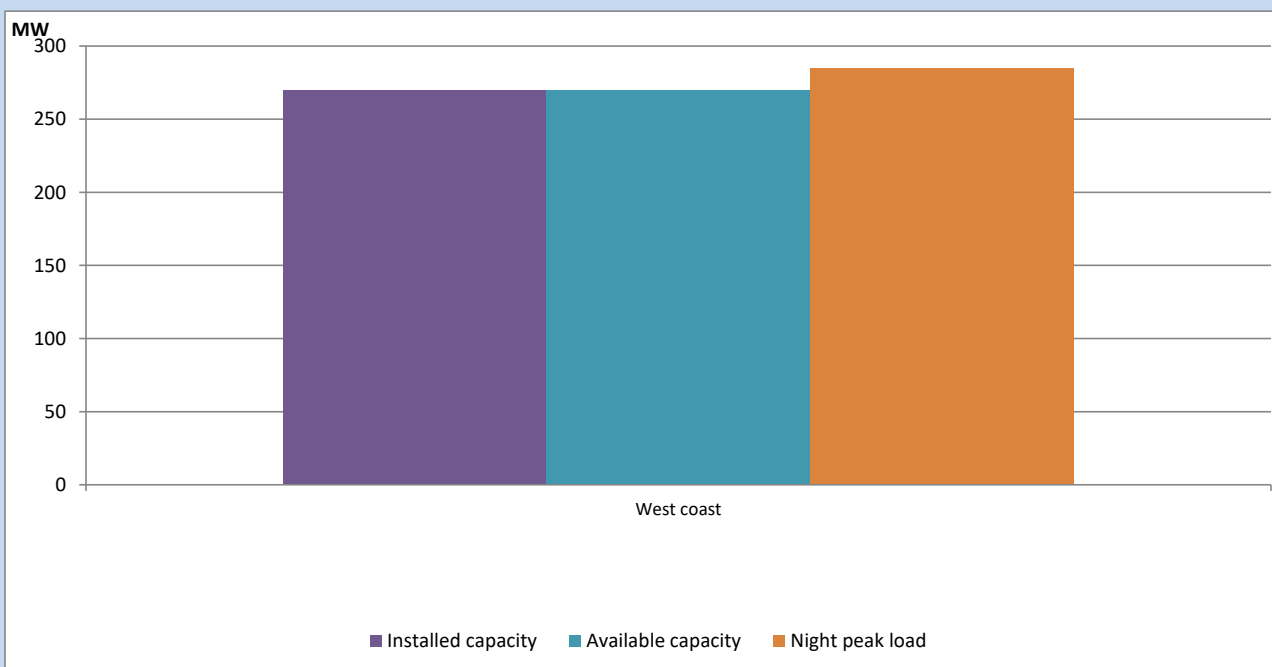
March 20, 2023



Available Generation is estimated based on plant availability at 6.00am on

March 21, 2023

## IPP owned Thermal Plant Loading at the Night Peak

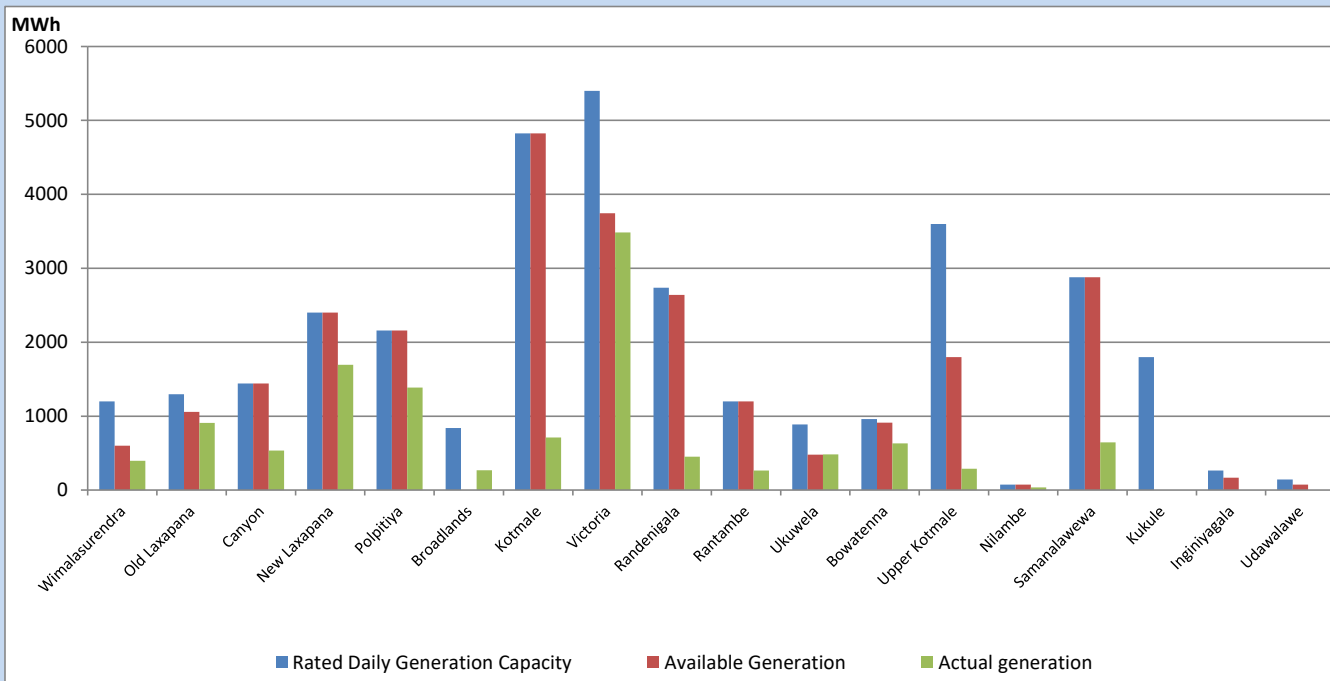


Note- Plant availability is recorded at 6.00 am on

March 21, 2023

## Major Hydro Plant Dispatch

March 20, 2023

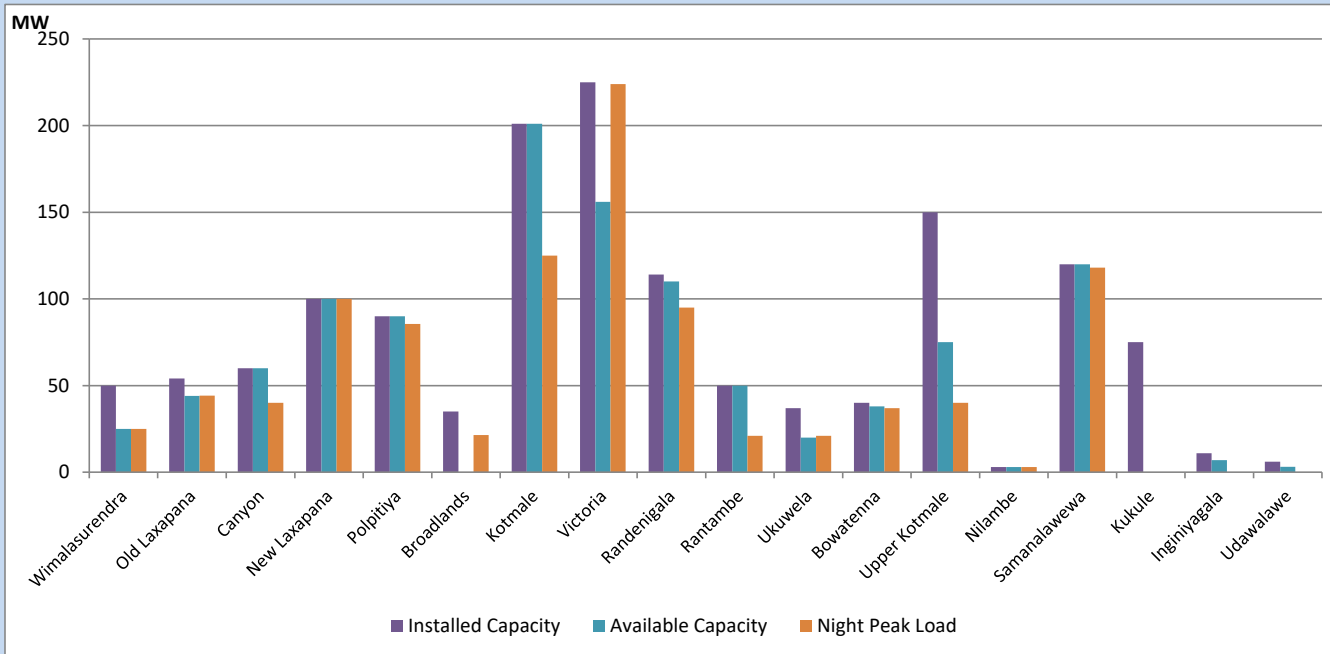


Available Generation is estimated based on plant availability at 6.00am on  
Broadlands power plant is operating in the Commissioning Stage

March 21, 2023

## Major Hydro Plant Loading at Night Peak

March 20, 2023



Note- Plant availability is recorded at 6.00 am on

March 21, 2023

Broadlands power plant is operating in the Commissioning Stage

## Summary of Major Plant performance

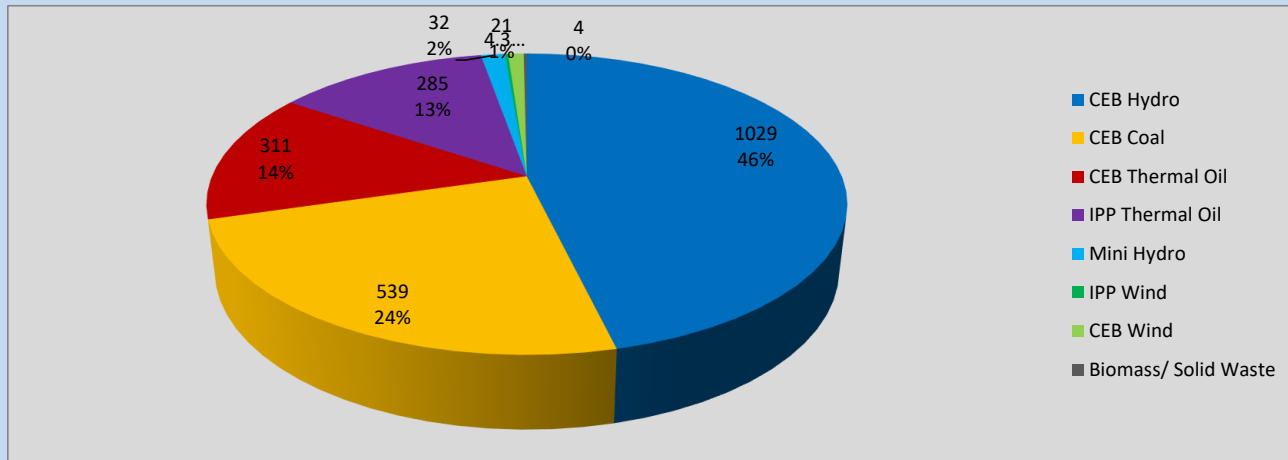
Plant	Installed Capacity	Plant Availability	Night peak Load	Plant Dispatch
	(MW)	(MW)	(MW)	(MWh)
Wimalasurendra	50	25	25	396
Old Laxapana	54	44	44	907
Canyon	60	60	40	535
New Laxapana	100	100	100	1,696
Polpitiya	90	90	86	1,385
Broadlands	35	0	21	267
Kotmale	201	201	125	710
Victoria	225	156	224	3,484
Randenigala	114	110	95	450
Rantambe	50	50	21	265
Ukuwela	37	20	21	481
Bowatenna	40	38	37	632
Upper Kotmale	150	75	40	288
Nilambe	3	3	3	35
Samanalawewa	120	120	118	645
Kukule	75	0	0	0
Inginiyagala	11	7	0	0
Udawalawe	6	3	0	0
Puttalam Coal I	270	270	269	6,360
Puttalam Coal II	270	270	270	6,475
Puttalam Coal III	270	0	0	0
KPS Small GTs	64	32	0	0
KPS GT 7	115	115	0	0
KCCP	161	158	145	2,485
Sapugaskanda A	70	43	42	797
Sapugaskanda B	70	72	62	1,415
Uthura Janani	26	0	0	195
Barge CEB	60	45	50	1,380
CEB-Thulhiriya	10	0	0	0
CEB-Kolonnawa	20	0	0	0
CEB-Mathugama	20	12	12	43
ACE Matara	24	0	0	0
Asia Power	50	0	0	0
Sojitz Kelanitissa	163	0	0	0
West Coast	270	270	285	5,976
Nothern Power	36	0	0	0
ACE Embilipitiya	93	0	0	0
<b>Total</b>	<b>3,483</b>	<b>2,390</b>	<b>2,197</b>	<b>39,856</b>

Plant availability is the availability recorded at 6 am on

March 21, 2023

## Contribution to the Night Peak in MW

March 20, 2023

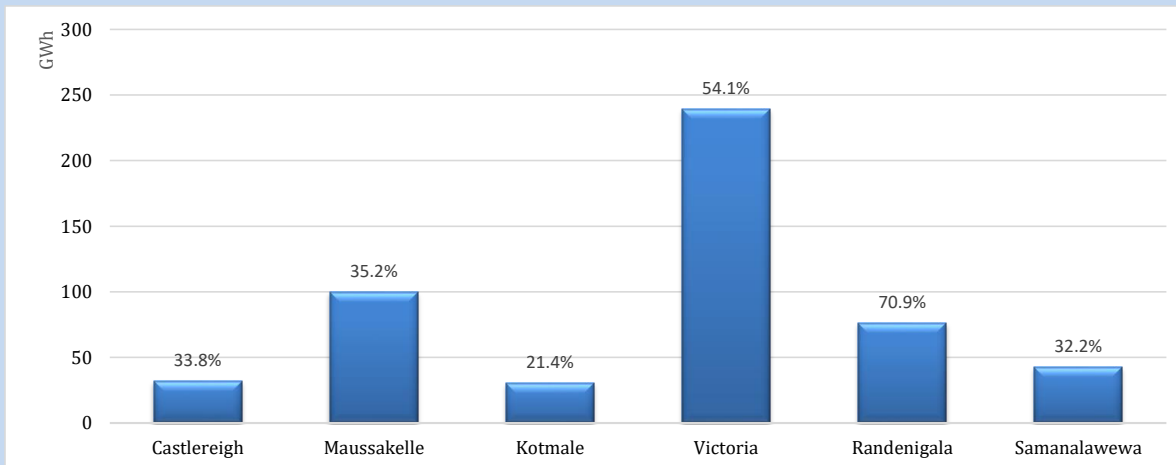


Night Peak*	2,226 MW
Day Peak	1,874 MW
Minimum Demand	1,110 MW

Above figures are excluding contribution from roof top solar, non telemetered solar and mini hydro plants

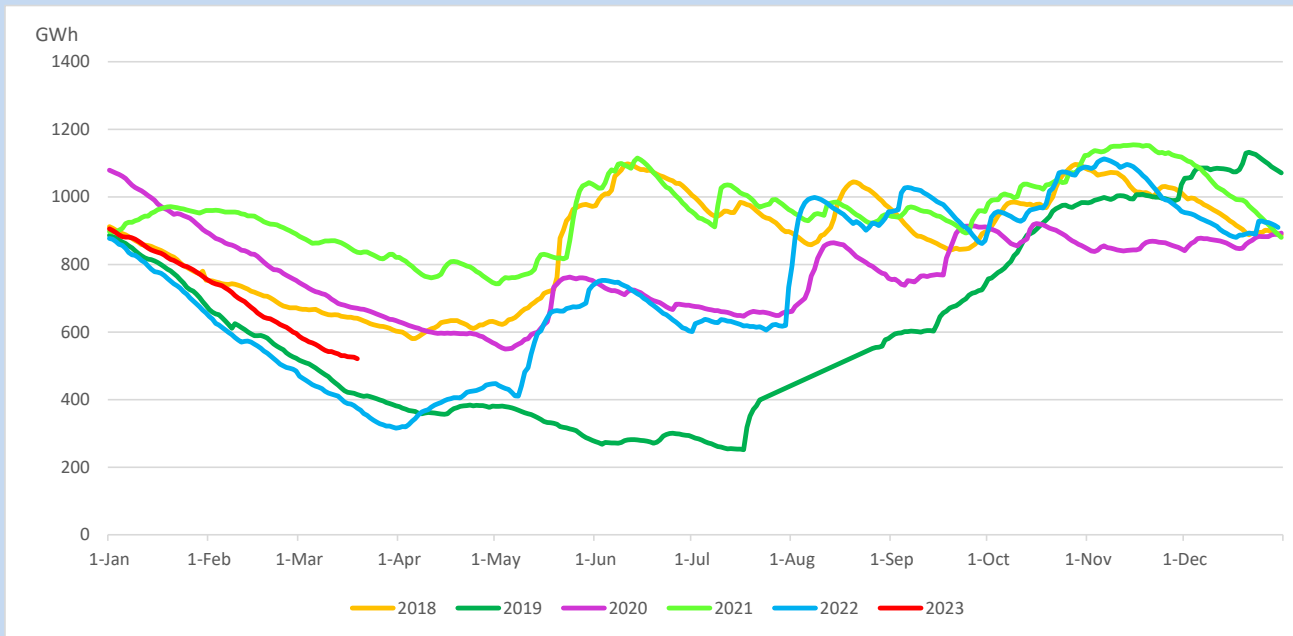
## Reservoir Levels -

as at 06.00 Hr on March 21, 2023

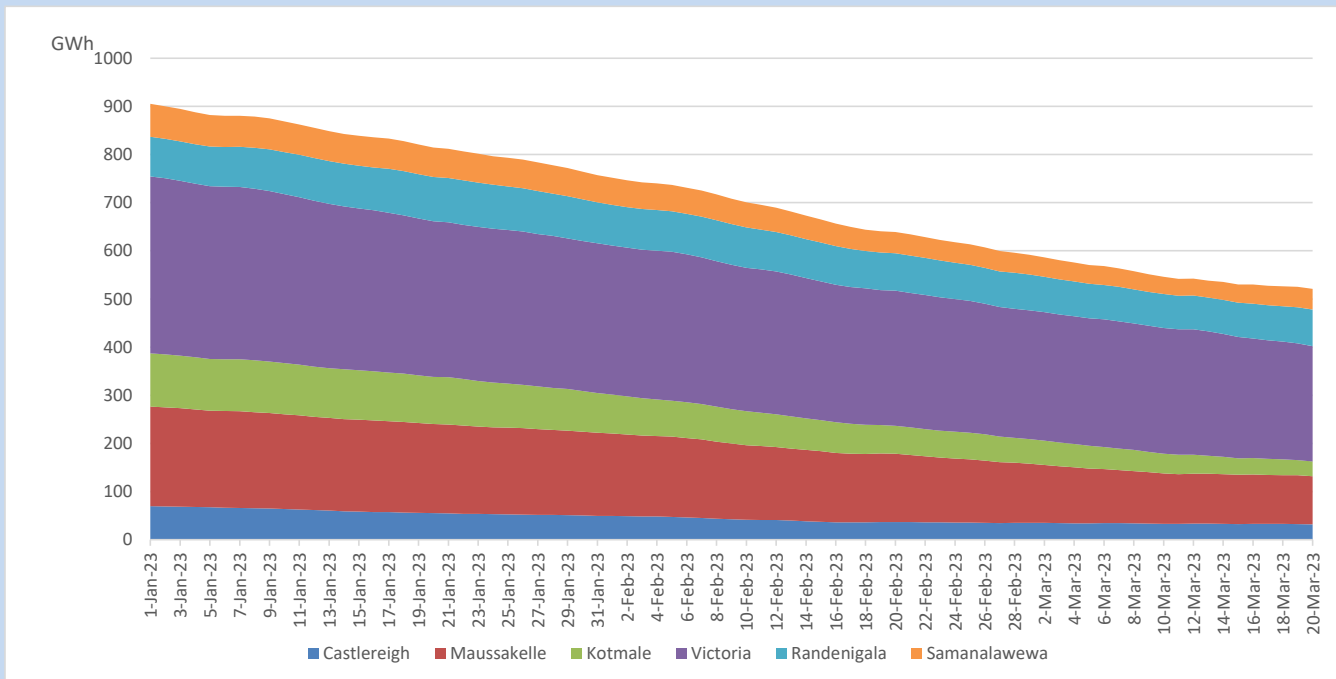


Total Reservoir Level	521 GWh
% of Total capacity	43.3%

## Comparison of Total Reservoir Storage Levels with Past Years

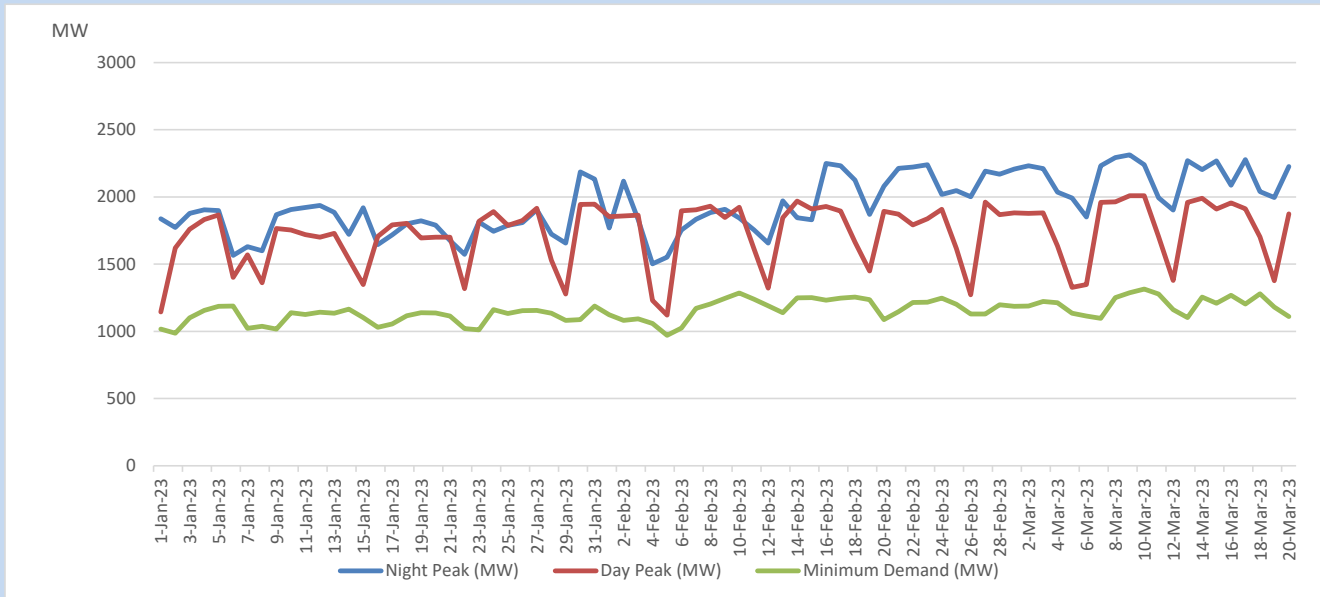


## Variation of Major Hydro Reservoir Levels in the current year (GWh)





## Variation of Demand during the current year

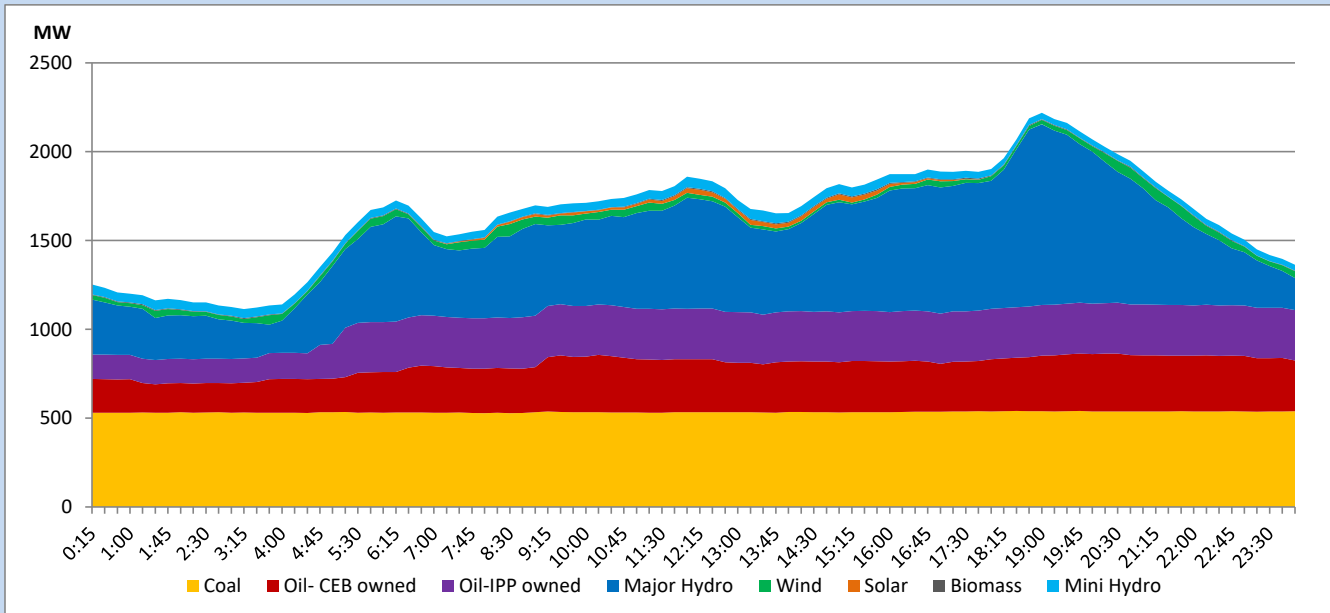


The above figures are excluding contribution from roof top solar, non telemetered solar and mini hydro plants

## Daily Load Curve

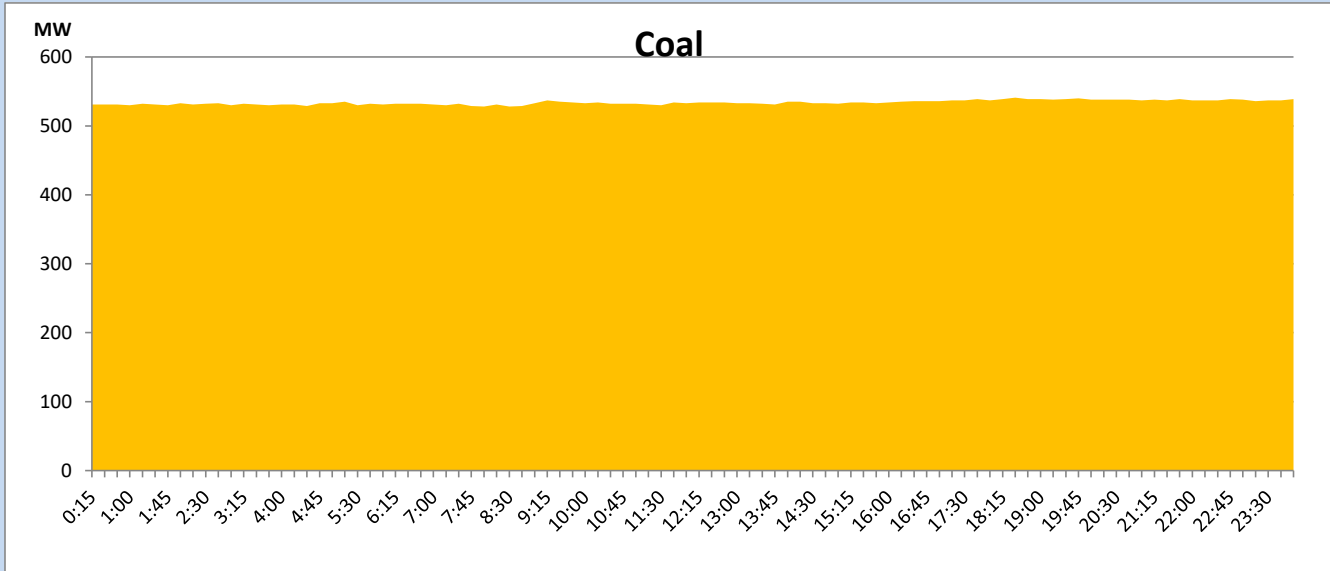
March 20, 2023

Solar and wind data is based on Telemetered Power Stations only



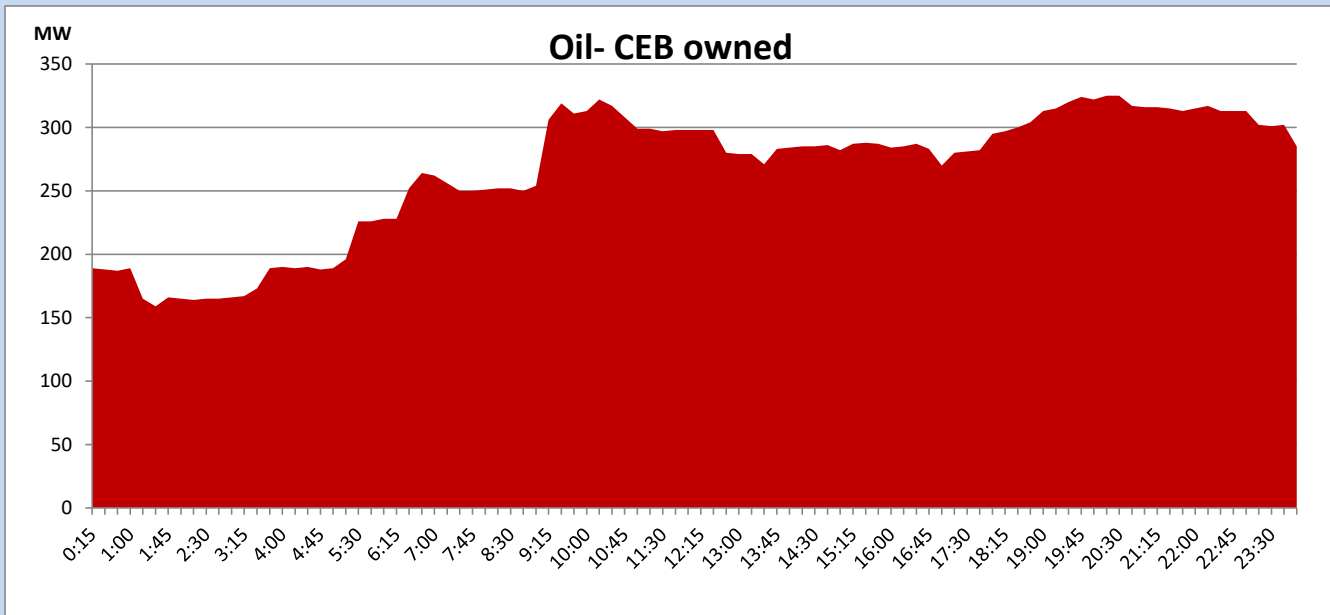
## Coal Generation during

March 20, 2023



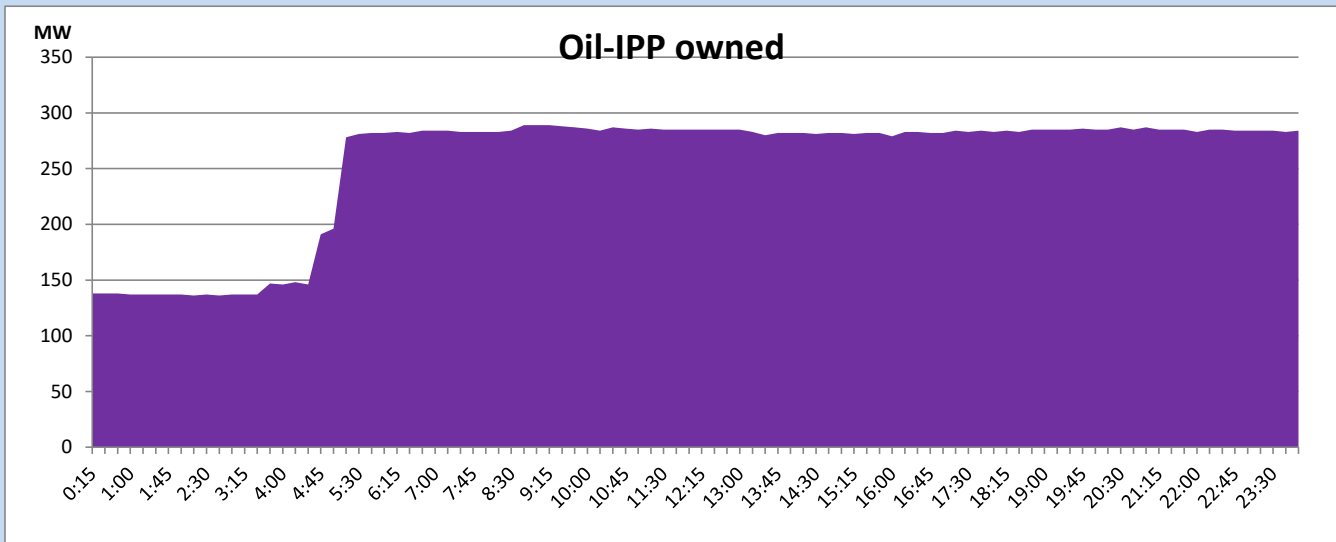
## CEB Oil Plant Generation during

March 20, 2023



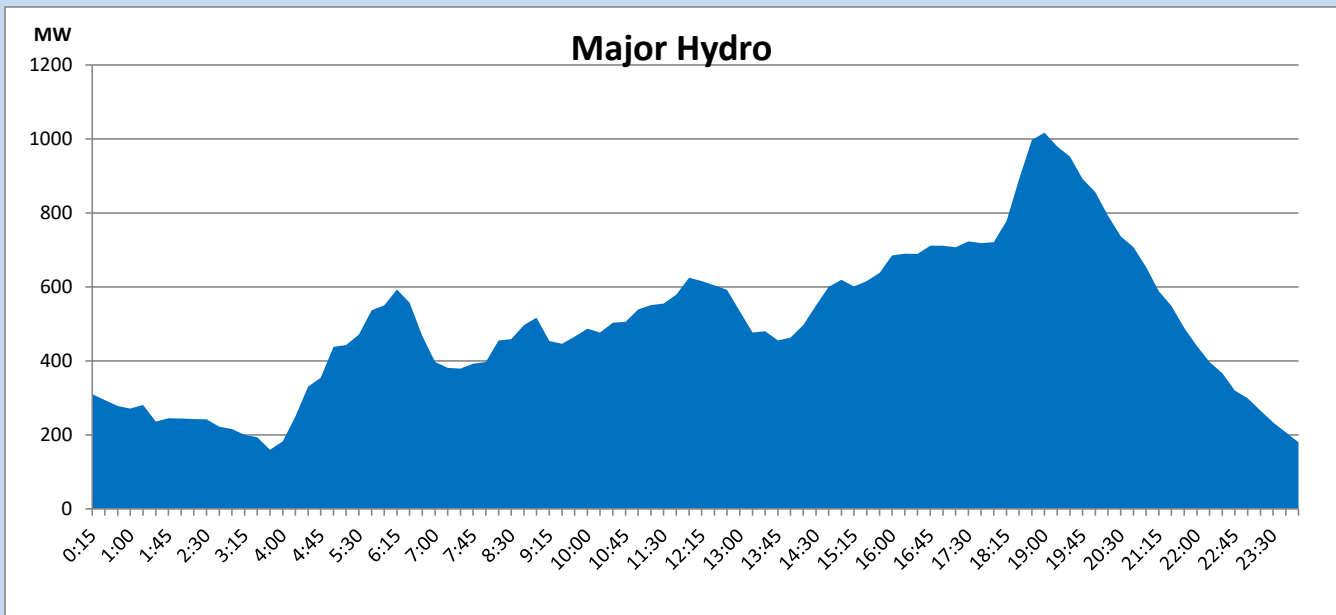
IPP Oil Plant Generation during

March 20, 2023



Major Hydro Generation during

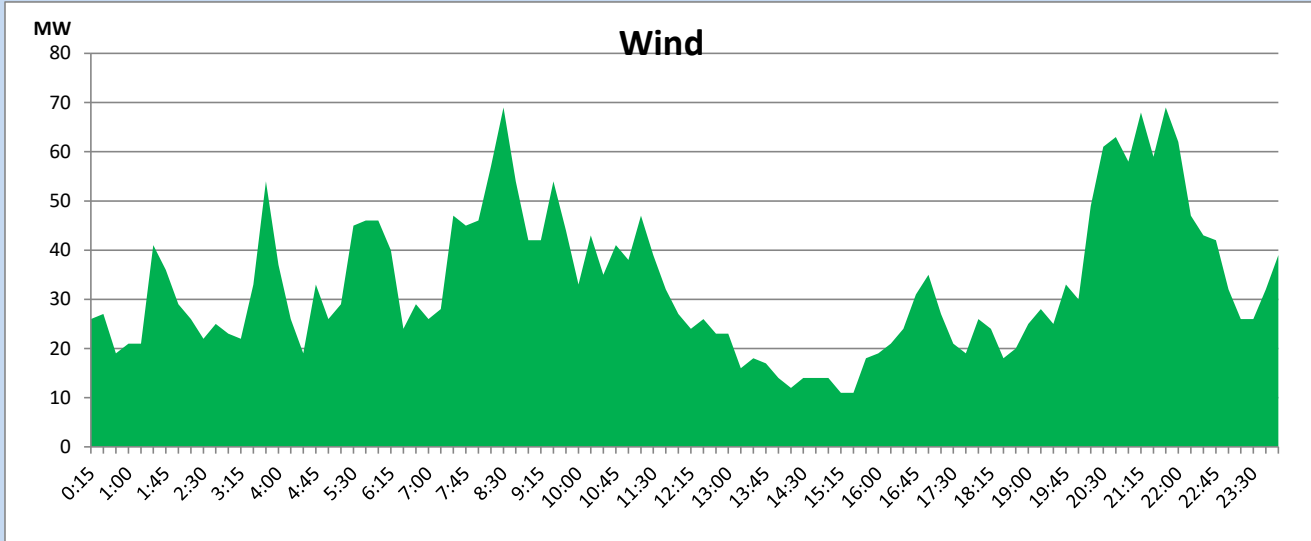
March 20, 2023



## Wind Generation during

March 20, 2023

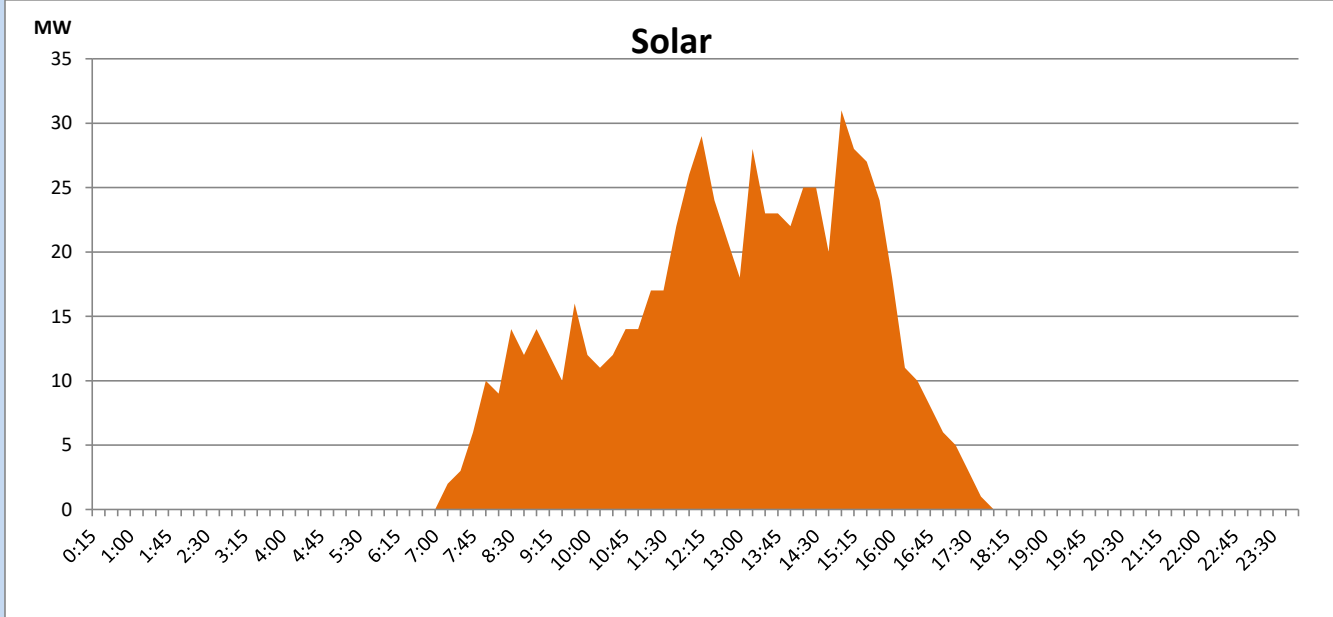
Based on Telemetered Power Stations only



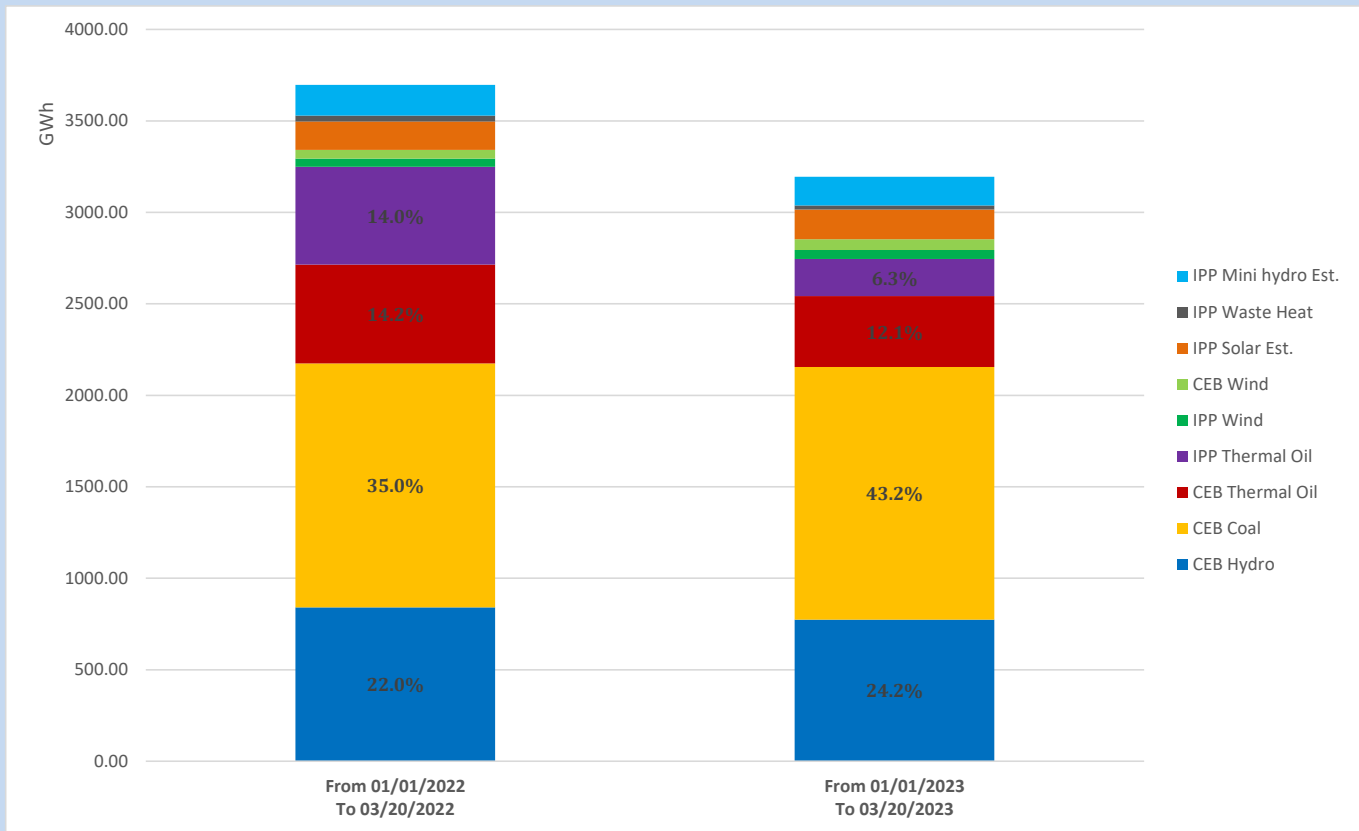
## Solar Generation during

March 20, 2023

Based on Telemetered Power Stations only



## Cumulative Dispatch Comparison with Last Year



The above figures are including contribution from roof top solar, non telemetered solar and mini hydro plants

### Thermal Plant Fuel types

Power Station	Primary Fuel
CEB Thermal	
Sapugaskanda 1	Heavy Fuel
Sapugaskanda 2	Heavy Fuel
Kelanitissa Small Gas Turbines	Auto Diesel
GT 7 - Kelanitissa	Auto Diesel
Kelanitissa CCY	Naphtha or Diesel
Lakvijaya 1	Coal
Lakvijaya 2	Coal
Lakvijaya 3	Coal
Uthuru Janani	Heavy Fuel
Barge CEB	Heavy Fuel

Power Station	Primary Fuel
Private Thermal	
West Coast	Auto Diesel / Heavy Fuel

### Major Incidents reported during the day

March 20, 2023

1) Victoria Unit 03 tripped twice at 4.29hrs & 5.18 hrs due to high turbine pit water level. Victoria Unit 03 is yet to resume generation.