

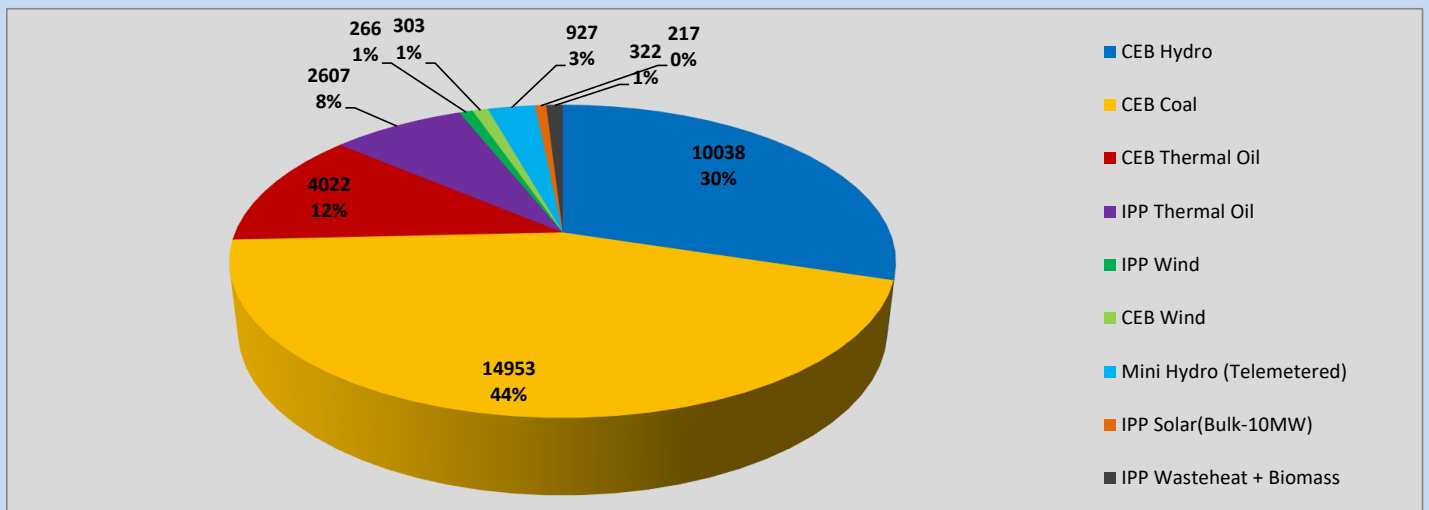
# Generation and Reservoirs Statistics

March 19, 2023



PUBLIC UTILITIES COMMISSION OF SRI LANKA

## Daily Generation Mix in MWh



Total Generation (Excluding estimated figures) =



**33,655 MWh**

### Estimated figures of CEB generation report

Estimated unserved energy = 0.00 GWh  
 Estimated Mini Hydro (Non telemetered) = 383 MWh  
 Estimated IPP Solar PV (Bulk 1-10MW) = 304 MWh  
 Estimated Solar Roof Top PV = 1490 MWh

## Cumulative Dispatch

Following data excludes the contribution from roof top solar, non telemetered solar and mini hydro plants

### For Current Month

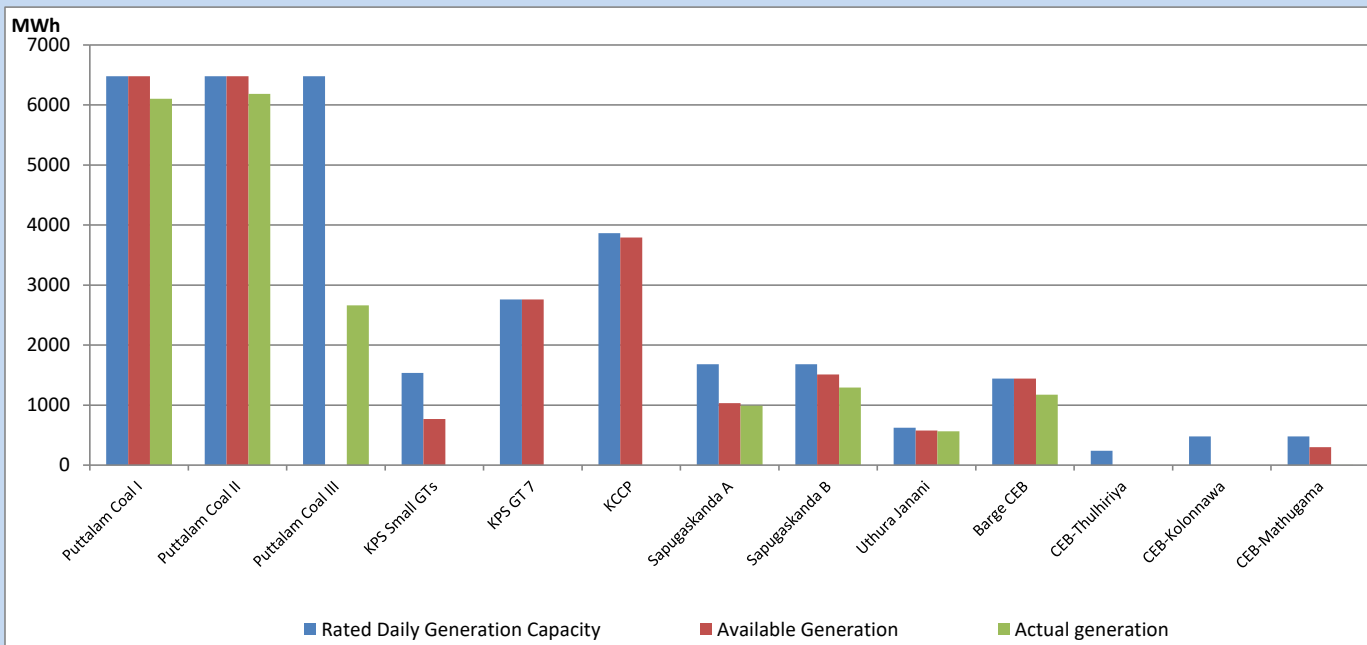
Category	Dispatch (GWh)	
CEB Hydro	161	21.63%
CEB Coal	363	48.87%
CEB Thermal Oil	105	14.07%
IPP Thermal	66	8.83%
SPP Wind	11	1.45%
CEB Wind	13	1.81%
Mini Hydro (Telemetered)	14	1.91%
IPP Solar(Bulk-10MW)	5	0.68%
IPP Wasteheat + BMP	6	0.76%
<b>Total</b>	<b>743</b>	

### For Current Year

Category	Dispatch (GWh)	
CEB Hydro	762	26.11%
CEB Coal	1,367	46.84%
CEB Thermal Oil	382	13.07%
IPP Thermal	197	6.74%
SPP Wind	49	1.67%
CEB Wind	58	1.98%
Mini Hydro (Telemetered)	60	2.06%
IPP Solar(Bulk-10MW)	22	0.74%
IPP Wasteheat	23	0.78%
<b>Total</b>	<b>2,919</b>	

## CEB owned Thermal Plant Dispatch

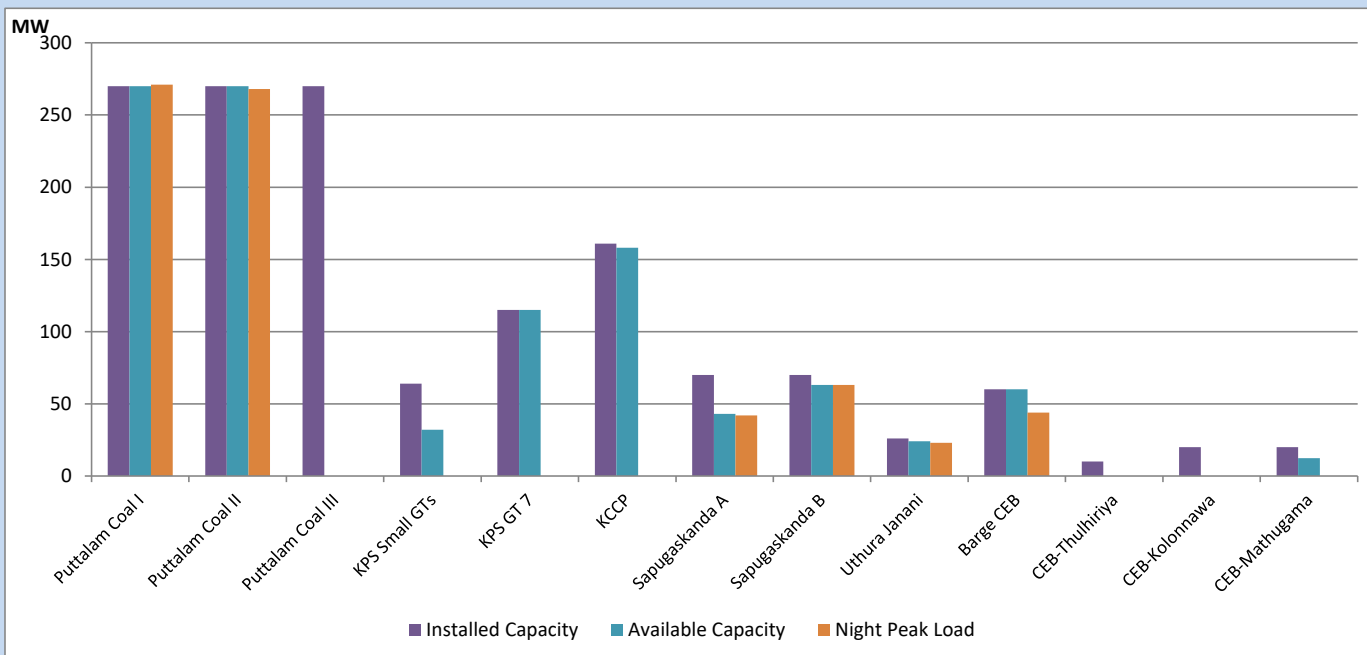
March 19, 2023



Available Generation is estimated based on plant availability at 6.00am on

March 20, 2023

## CEB owned Thermal Plant Loading at the Night Peak



Note- Plant availability is recorded at 6.00 am on

March 20, 2023

## IPP owned Thermal Plant Dispatch

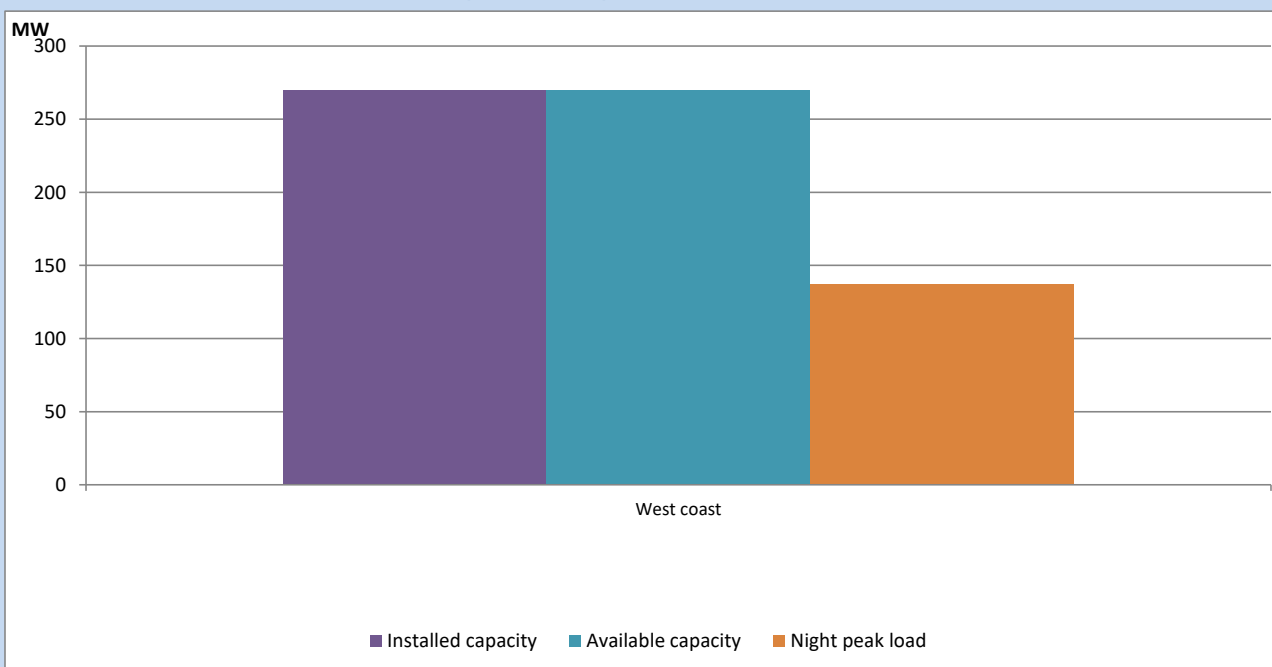
March 19, 2023



Available Generation is estimated based on plant availability at 6.00am on

March 20, 2023

## IPP owned Thermal Plant Loading at the Night Peak

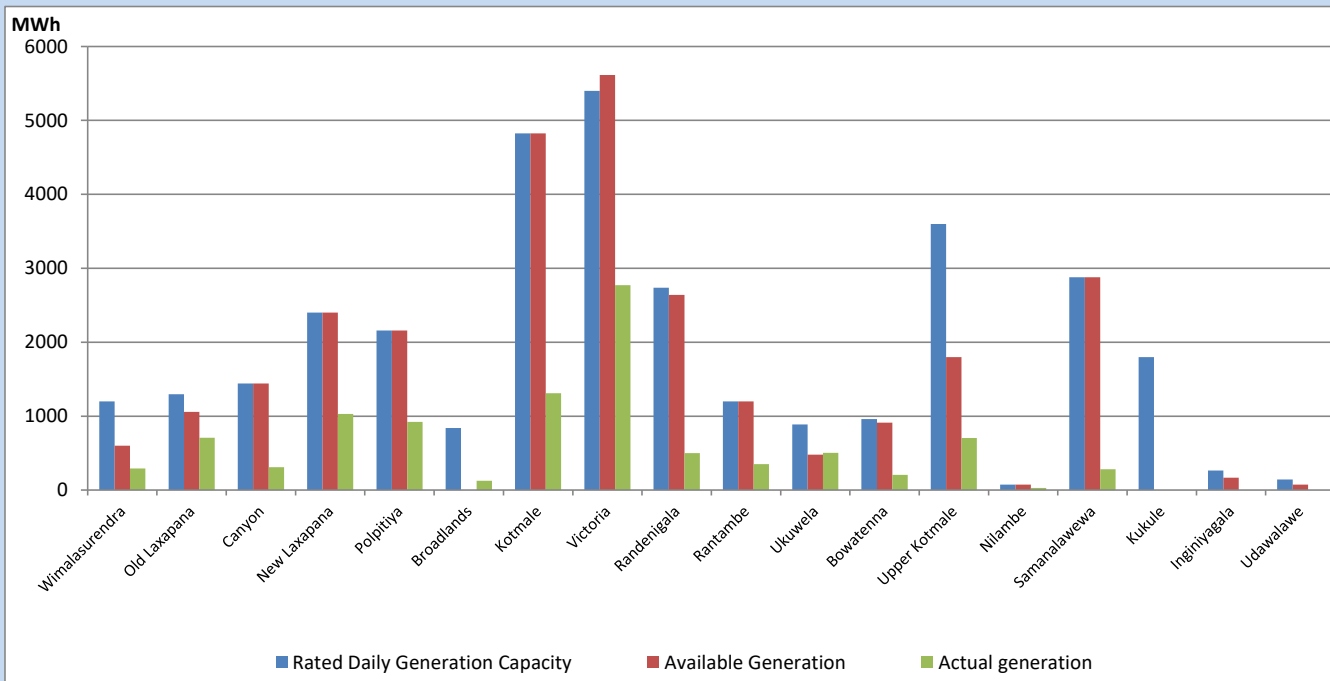


Note- Plant availability is recorded at 6.00 am on

March 20, 2023

## Major Hydro Plant Dispatch

March 19, 2023

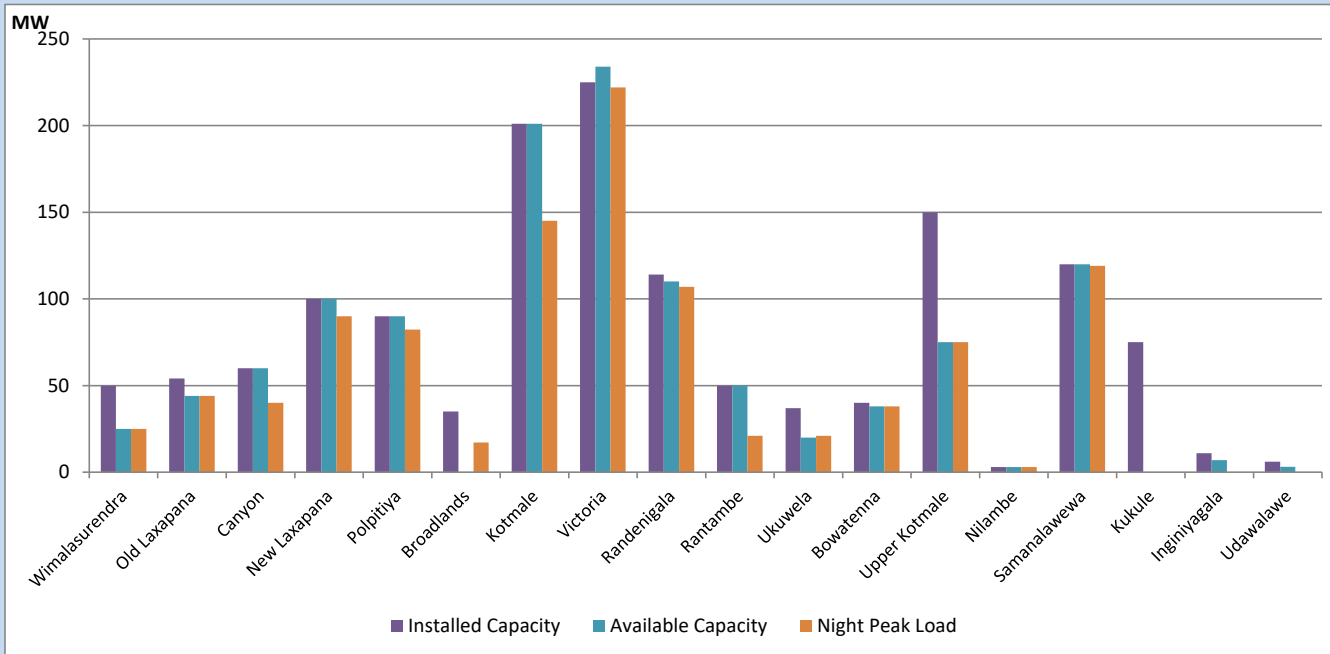


Available Generation is estimated based on plant availability at 6.00am on  
Broadlands power plant is operating in the Commissioning Stage

March 20, 2023

## Major Hydro Plant Loading at Night Peak

March 19, 2023



Note- Plant availability is recorded at 6.00 am on  
Broadlands power plant is operating in the Commissioning Stage

March 20, 2023

## Summary of Major Plant performance

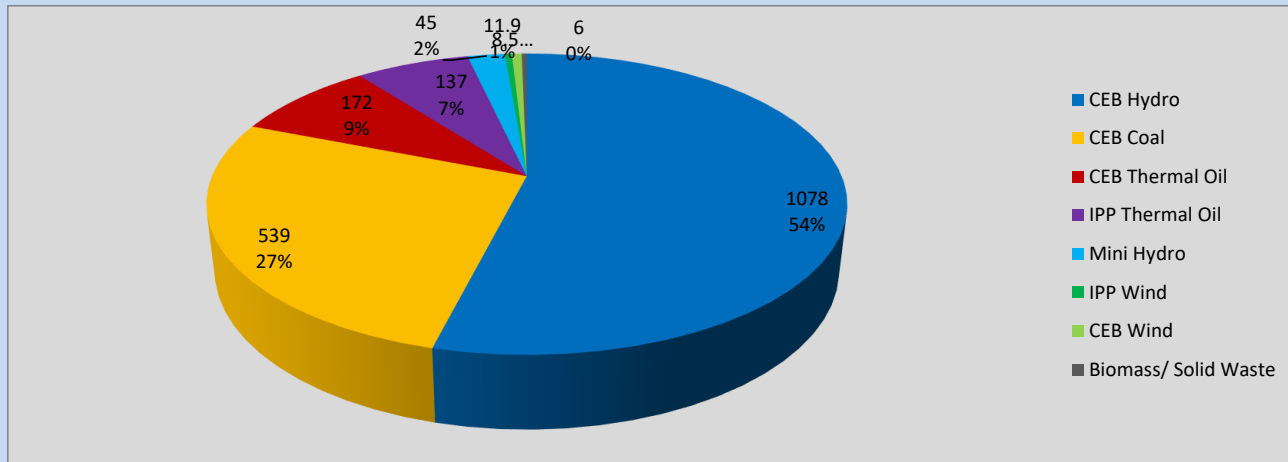
Plant	Installed Capacity	Plant Availability	Night peak Load	Plant Dispatch
	(MW)	(MW)	(MW)	(MWh)
Wimalasurendra	50	25	25	292
Old Laxapana	54	44	44	707
Canyon	60	60	40	309
New Laxapana	100	100	90	1,031
Polpitiya	90	90	82	921
Broadlands	35	0	17	125
Kotmale	201	201	145	1,310
Victoria	225	234	222	2,771
Randenigala	114	110	107	500
Rantambe	50	50	21	352
Ukuwela	37	20	21	504
Bowatenna	40	38	38	204
Upper Kotmale	150	75	75	703
Nilambe	3	3	3	27
Samanalawewa	120	120	119	282
Kukule	75	0	0	0
Inginiyagala	11	7	0	0
Udawalawe	6	3	0	0
Puttalam Coal I	270	270	271	6,104
Puttalam Coal II	270	270	268	6,187
Puttalam Coal III	270	0	0	2,662
KPS Small GTs	64	32	0	0
KPS GT 7	115	115	0	0
KCCP	161	158	0	0
Sapugaskanda A	70	43	42	991
Sapugaskanda B	70	63	63	1,291
Uthura Janani	26	24	23	562
Barge CEB	60	60	44	1,174
CEB-Thulhiriya	10	0	0	0
CEB-Kolonnawa	20	0	0	0
CEB-Mathugama	20	12	0	4
ACE Matara	24	0	0	0
Asia Power	50	0	0	0
Sojitz Kelanitissa	163	0	0	0
West Coast	270	270	137	2,607
Nothern Power	36	0	0	0
ACE Embilipitiya	93	0	0	0
<b>Total</b>	<b>3,483</b>	<b>2,498</b>	<b>1,969</b>	<b>33,655</b>

Plant availability is the availability recorded at 6 am on

March 20, 2023

## Contribution to the Night Peak in MW

March 19, 2023

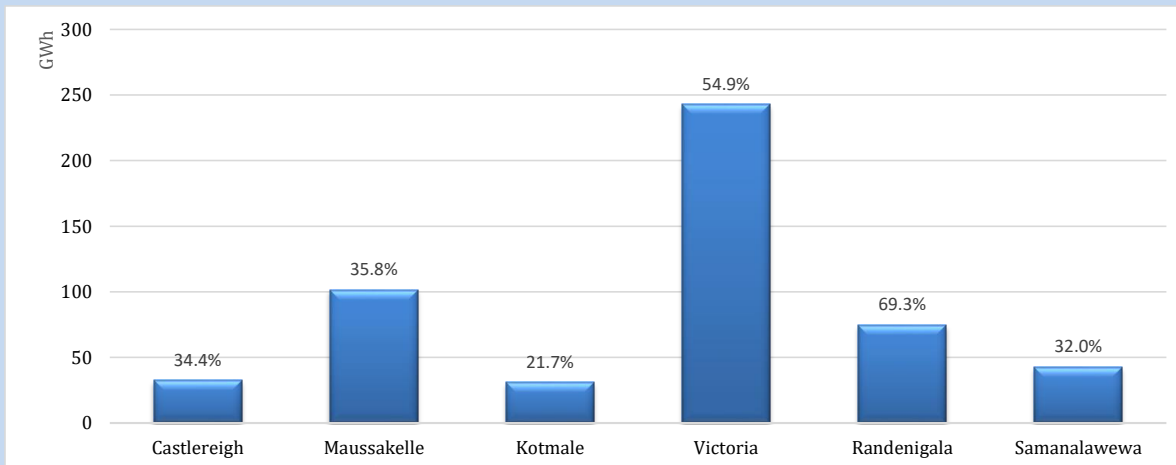


Night Peak*	1,997 MW
Day Peak	1,377 MW
Minimum Demand	1,182 MW

Above figures are excluding contribution from roof top solar, non telemetered solar and mini hydro plants

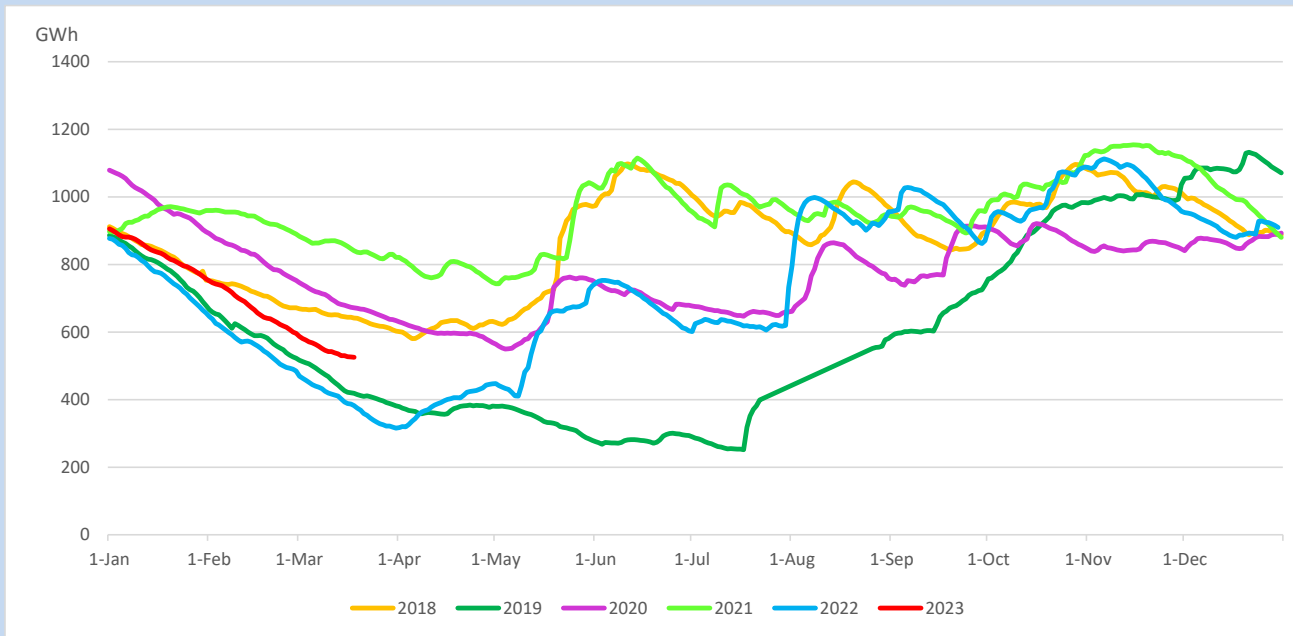
## Reservoir Levels -

as at 06.00 Hr on March 20, 2023

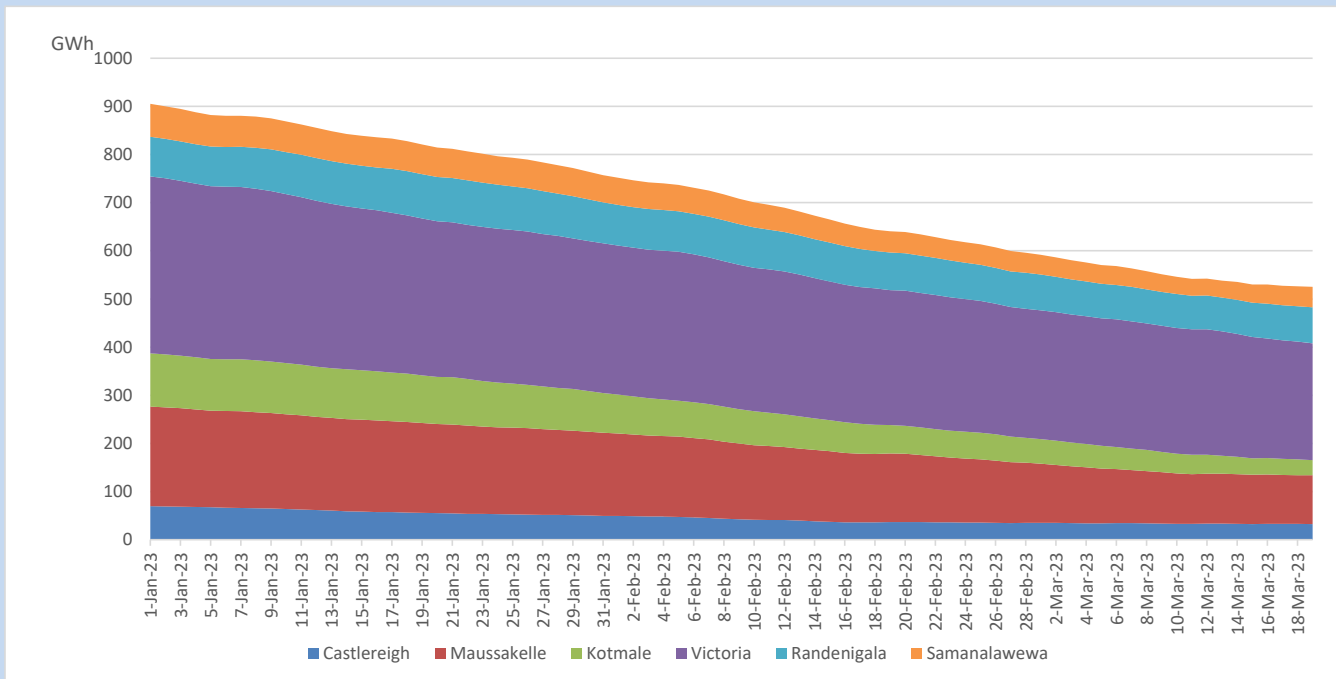


Total Reservoir Level	525.2 GWh
% of Total capacity	43.6%

## Comparison of Total Reservoir Storage Levels with Past Years

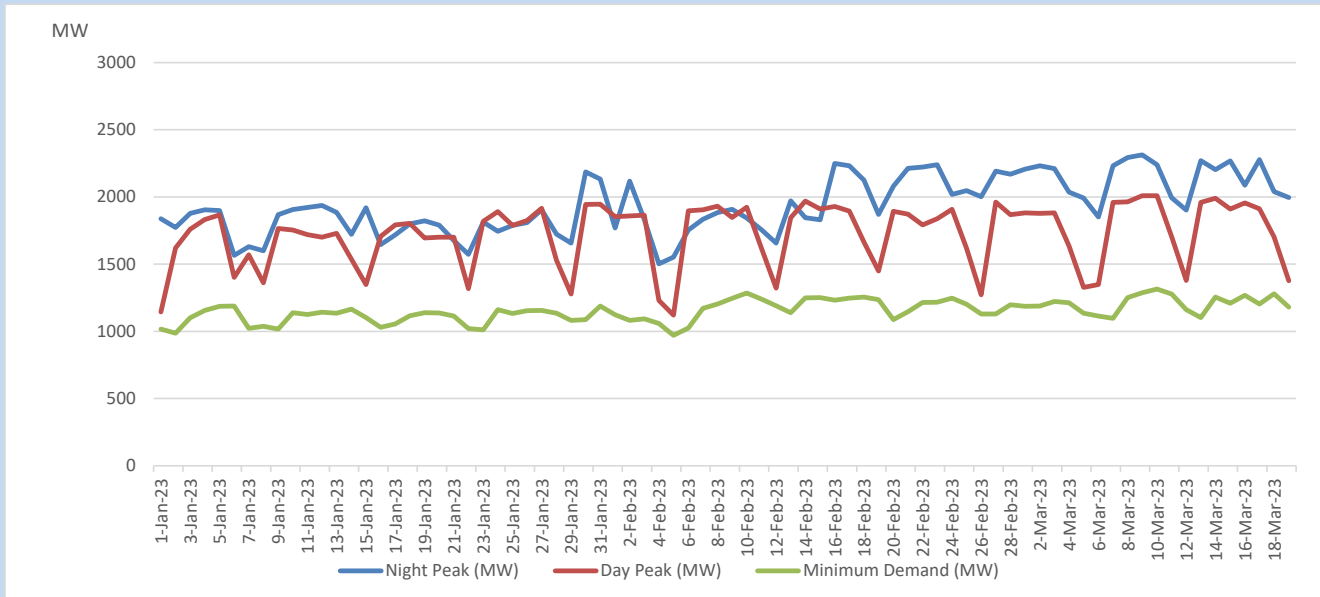


## Variation of Major Hydro Reservoir Levels in the current year (GWh)





## Variation of Demand during the current year

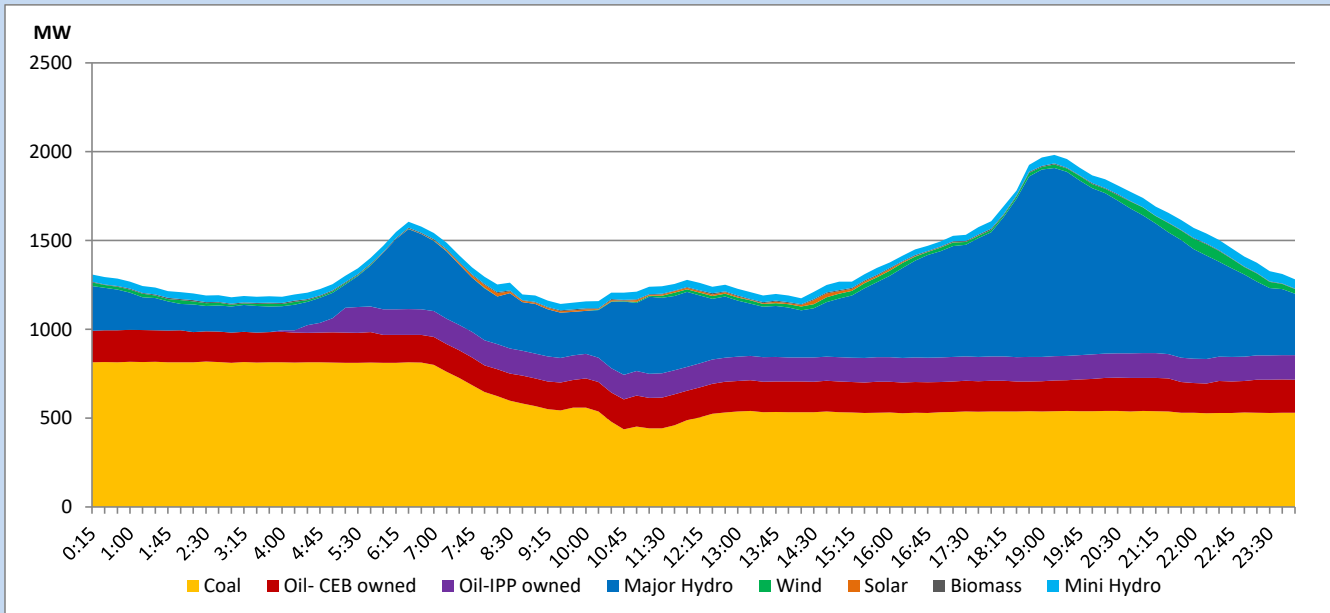


The above figures are excluding contribution from roof top solar, non telemetered solar and mini hydro plants

## Daily Load Curve

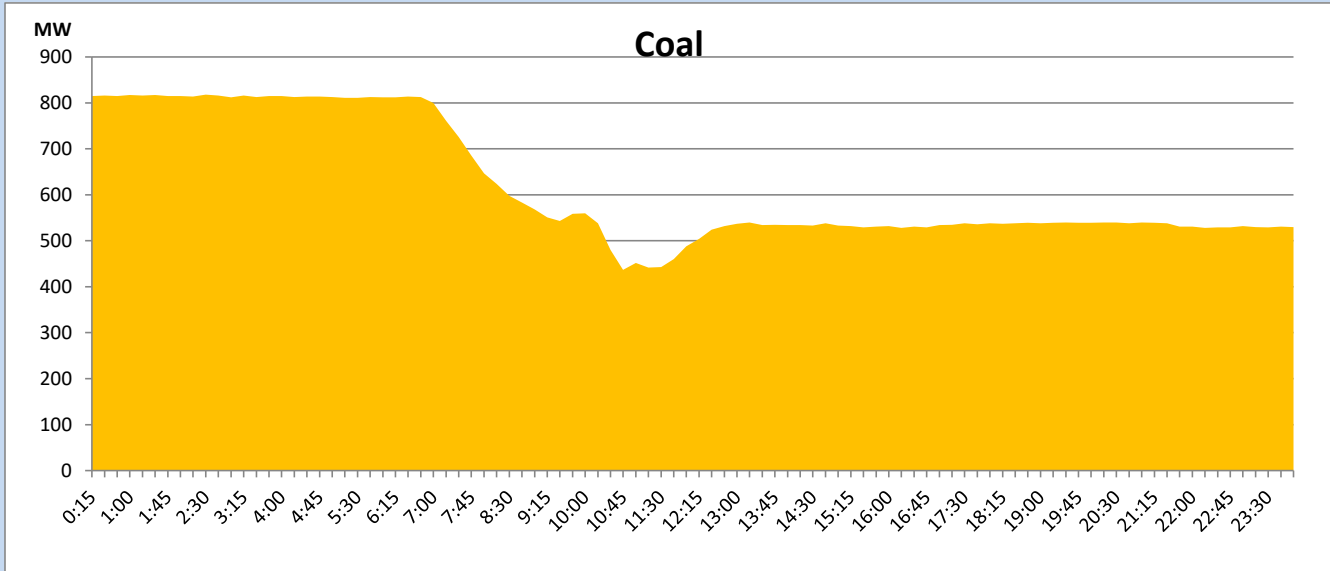
March 19, 2023

Solar and wind data is based on Telemetered Power Stations only



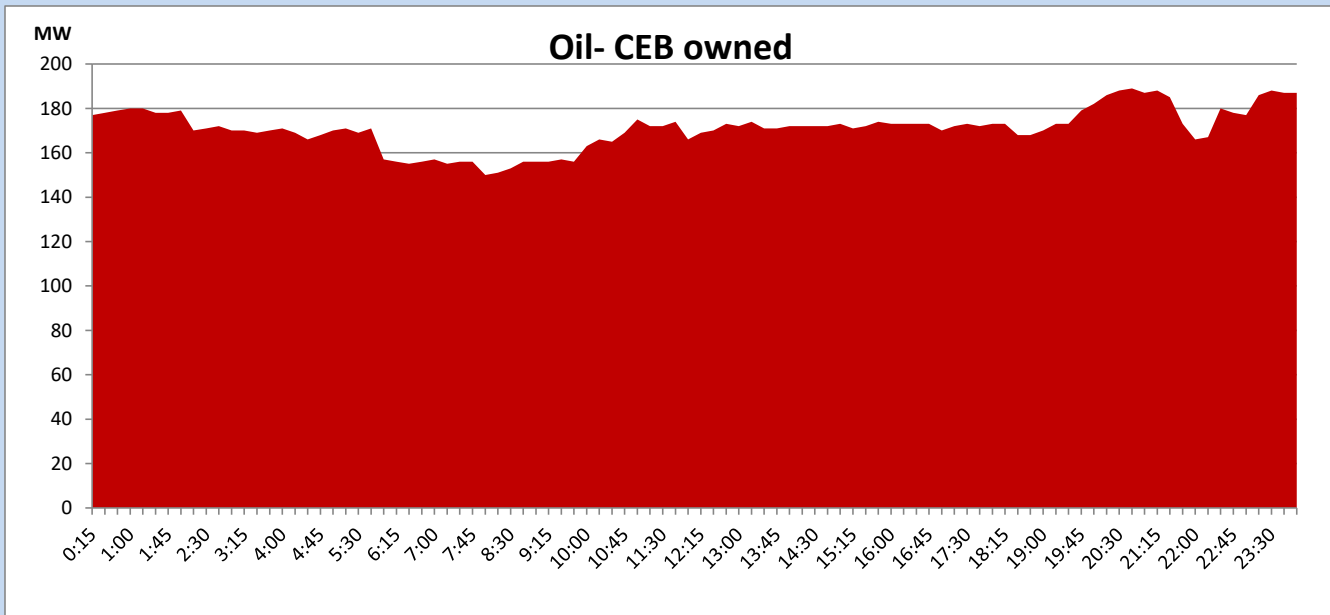
## Coal Generation during

March 19, 2023



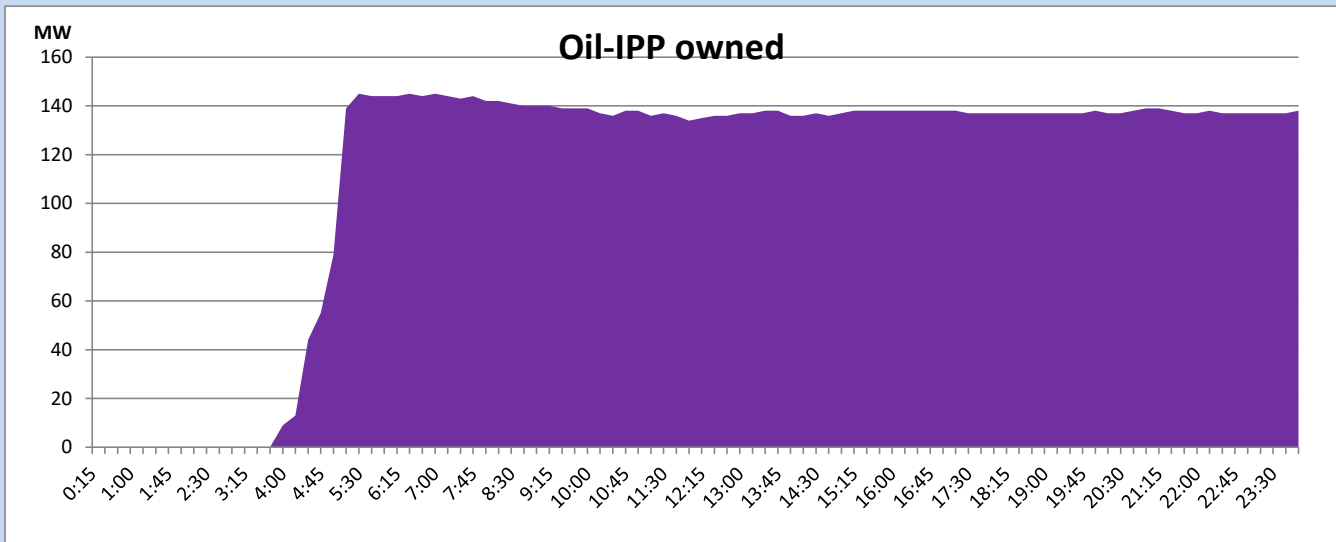
## CEB Oil Plant Generation during

March 19, 2023



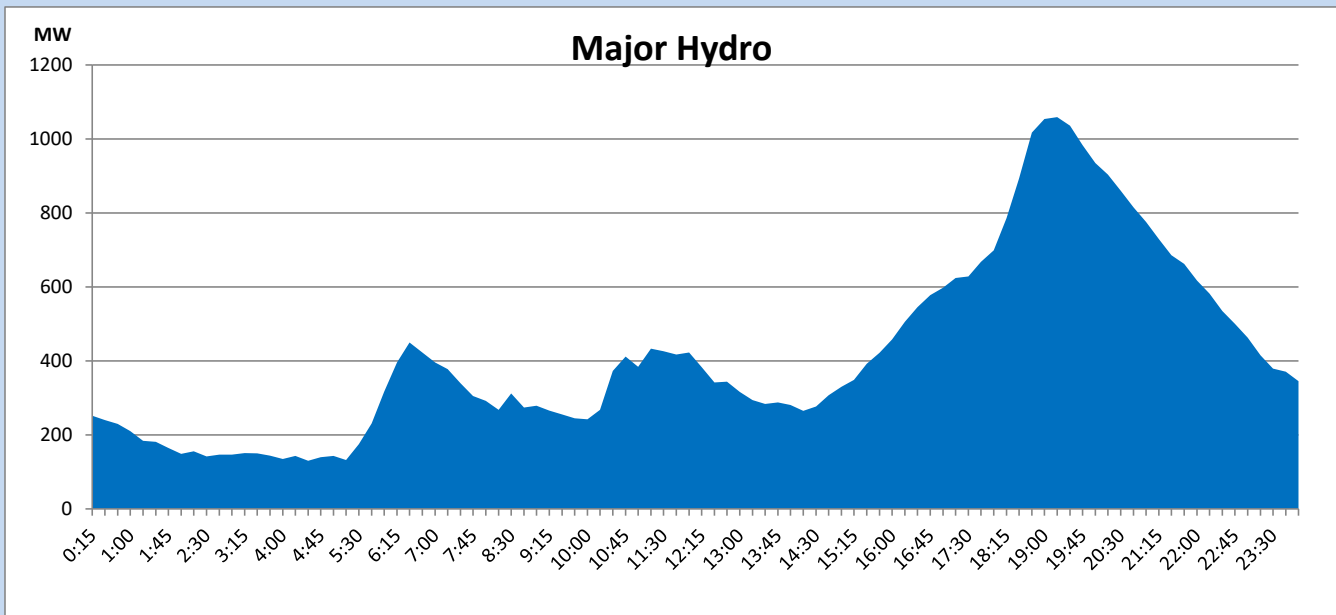
## IPP Oil Plant Generation during

March 19, 2023



## Major Hydro Generation during

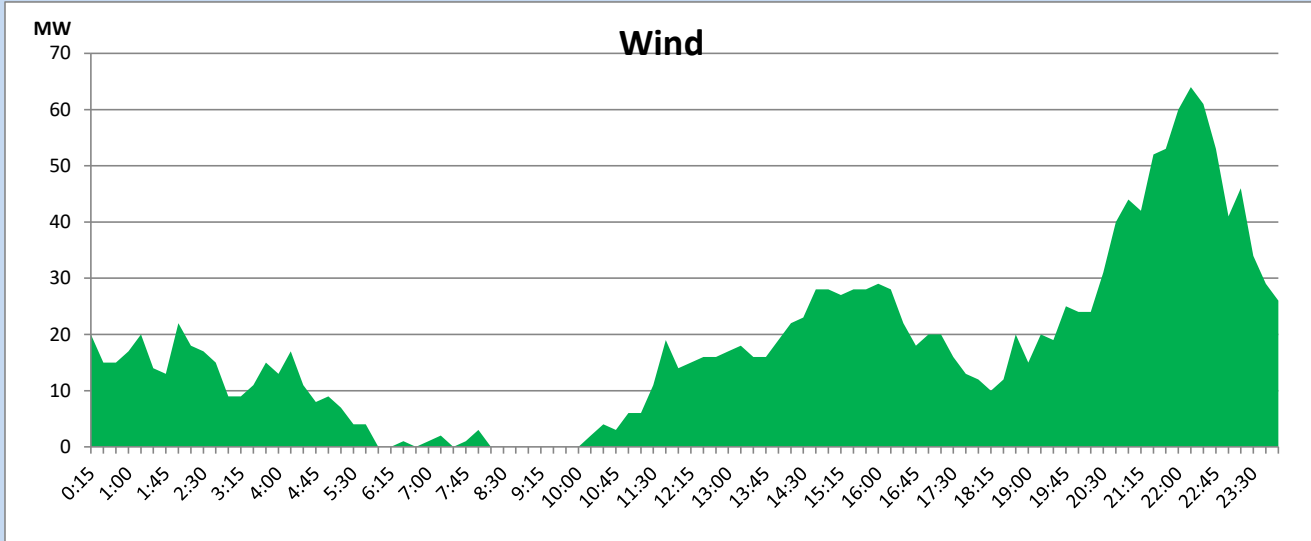
March 19, 2023



## Wind Generation during

March 19, 2023

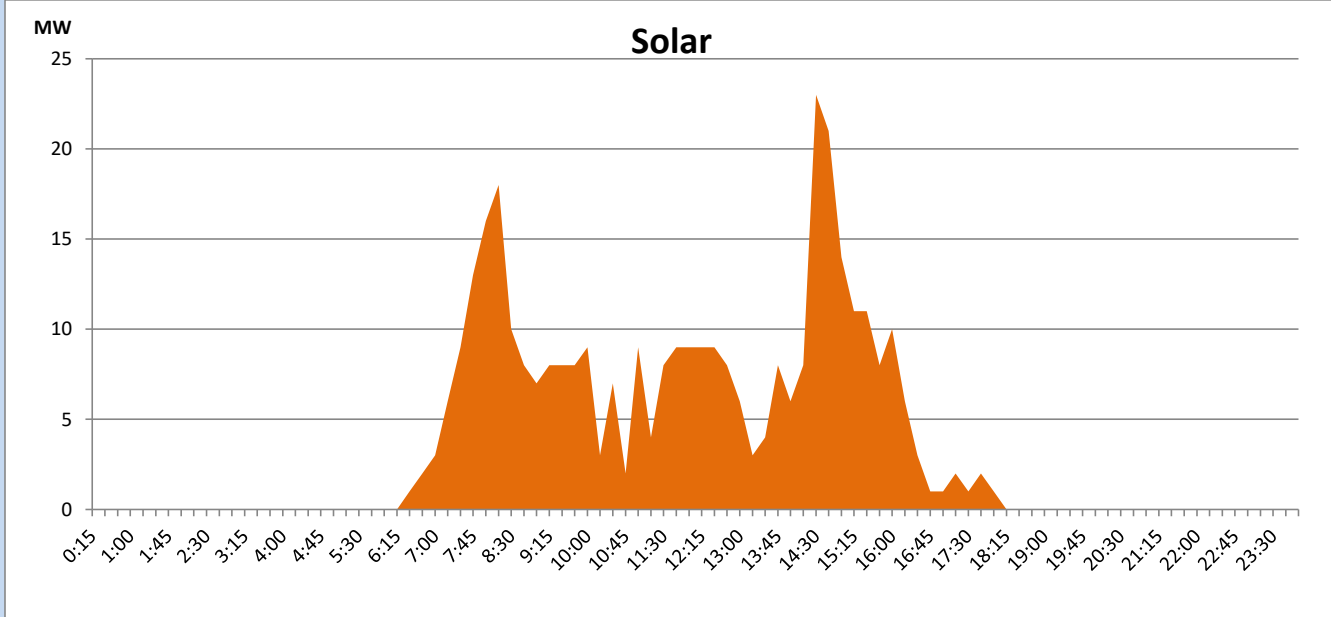
Based on Telemetered Power Stations only



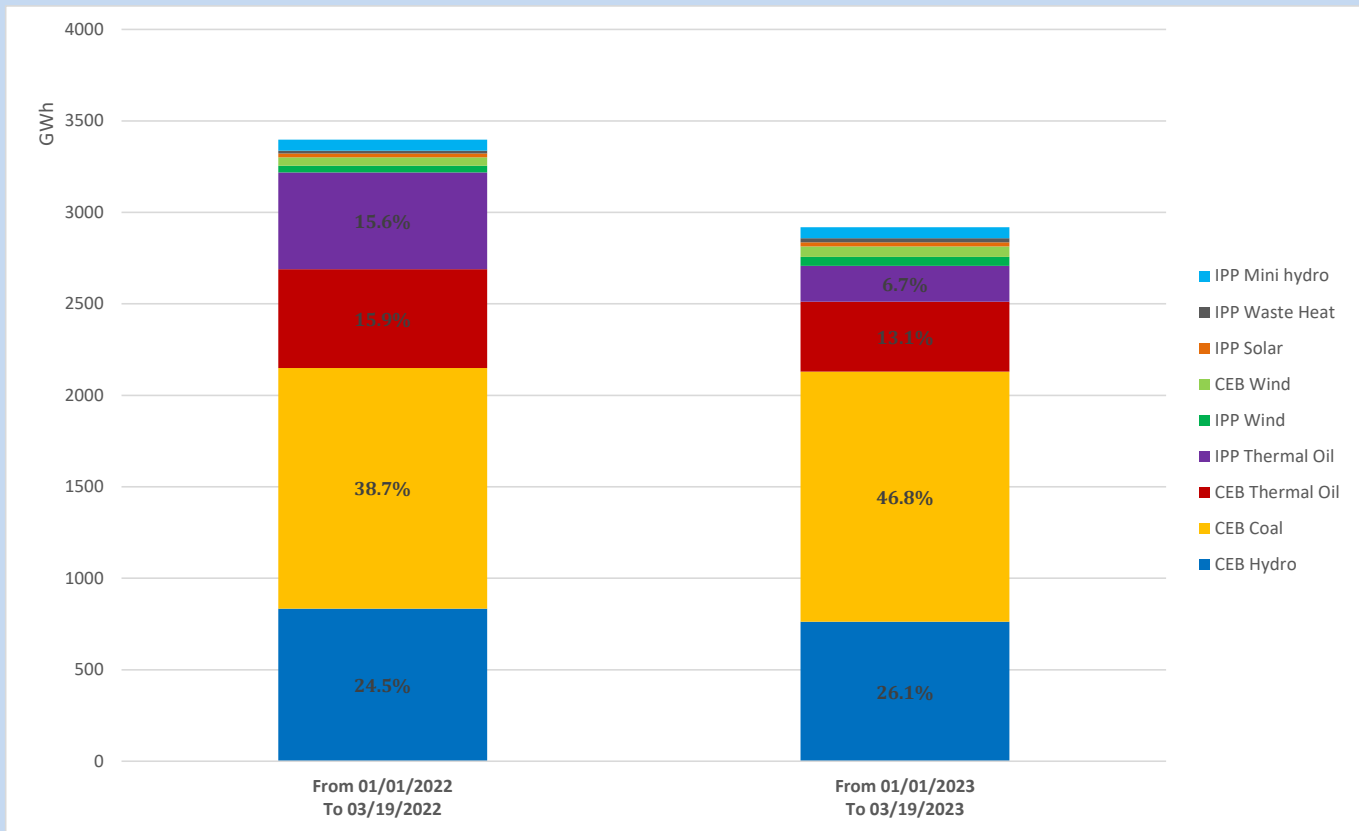
## Solar Generation during

March 19, 2023

Based on Telemetered Power Stations only



## Cumulative Dispatch Comparison with Last Year



### Thermal Plant Fuel types

Power Station	Primary Fuel
CEB Thermal	
Sapugaskanda 1	Heavy Fuel
Sapugaskanda 2	Heavy Fuel
Kelanitissa Small Gas Turbines	Auto Diesel
GT 7 - Kelanitissa	Auto Diesel
Kelanitissa CCY	Naphtha or Diesel
Lakvijaya 1	Coal
Lakvijaya 2	Coal
Lakvijaya 3	Coal
Uthuru Janani	Heavy Fuel
Barge CEB	Heavy Fuel

Power Station	Primary Fuel
Private Thermal	
West Coast	Auto Diesel / Heavy Fuel

### Major Incidents reported during the day

March 19, 2023

- 1) LVPS Unit 03 made forced shutdown at 11:06hrs due to a water wall leak.