

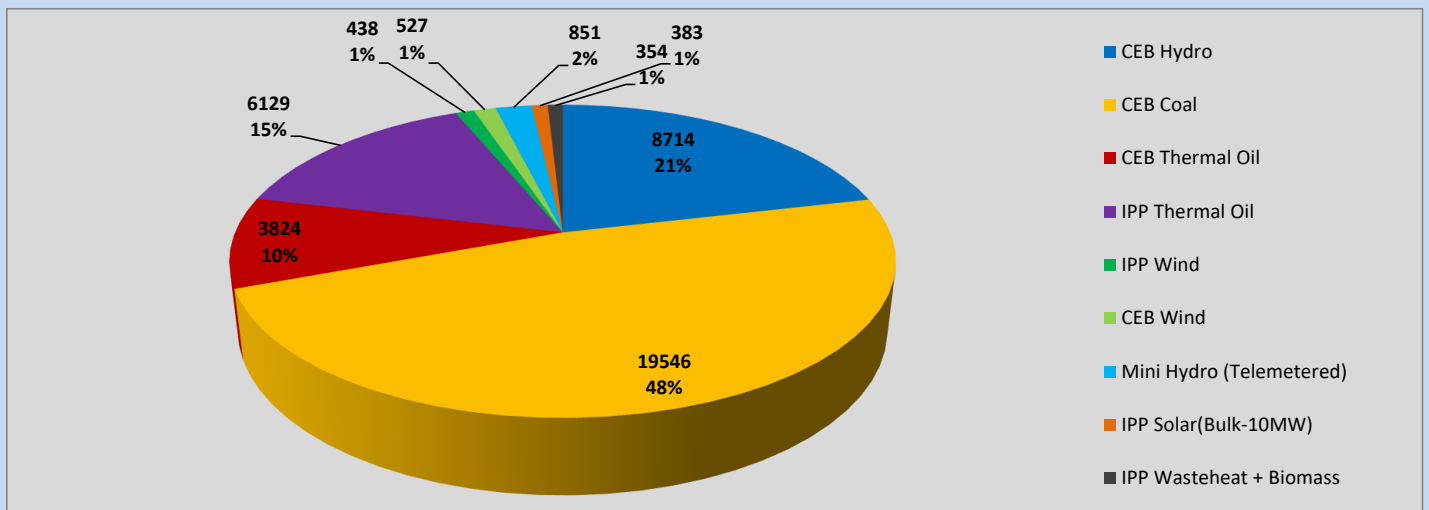
Generation and Reservoirs Statistics

March 17, 2023



PUBLIC UTILITIES COMMISSION OF SRI LANKA

Daily Generation Mix in MWh



Total Generation (Excluding estimated figures) =



40,766 MWh

Estimated figures of CEB generation report

Estimated unserved energy = 0.00 GWh
 Estimated Mini Hydro (Non telemetered) = 459 MWh
 Estimated IPP Solar PV (Bulk 1-10MW) = 304 MWh
 Estimated Solar Roof Top PV = 1490 MWh

Cumulative Dispatch

Following data excludes the contribution from roof top solar, non telemetered solar and mini hydro plants

For Current Month

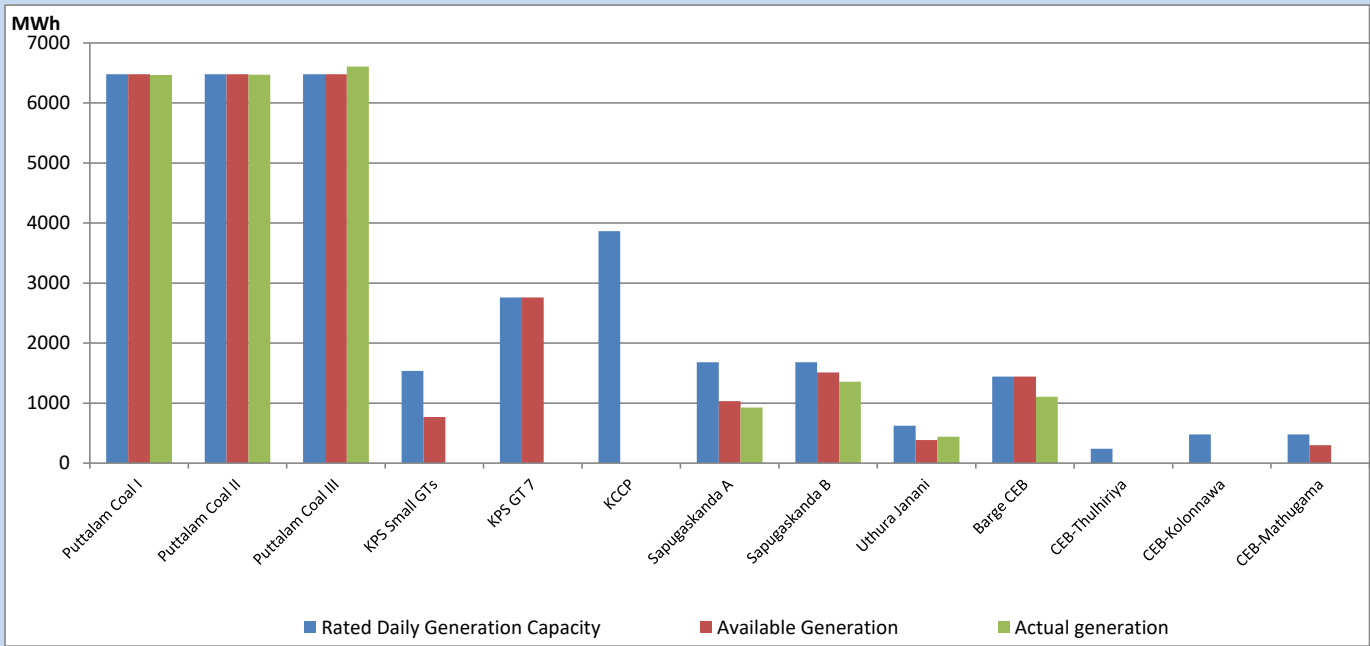
Category	Dispatch (GWh)	Percentage
CEB Hydro	143	21.38%
CEB Coal	329	48.99%
CEB Thermal Oil	97	14.47%
IPP Thermal	57	8.47%
SPP Wind	10	1.51%
CEB Wind	13	1.91%
Mini Hydro (Telemetered)	13	1.86%
IPP Solar (Bulk-10MW)	5	0.68%
IPP Wasteheat + BMP	5	0.74%
Total	671	

For Current Year

Category	Dispatch (GWh)	Percentage
CEB Hydro	745	26.16%
CEB Coal	1,333	46.82%
CEB Thermal Oil	374	13.14%
IPP Thermal	188	6.60%
SPP Wind	48	1.69%
CEB Wind	57	2.01%
Mini Hydro (Telemetered)	59	2.06%
IPP Solar (Bulk-10MW)	21	0.74%
IPP Wasteheat	22	0.77%
Total	2,847	

CEB owned Thermal Plant Dispatch

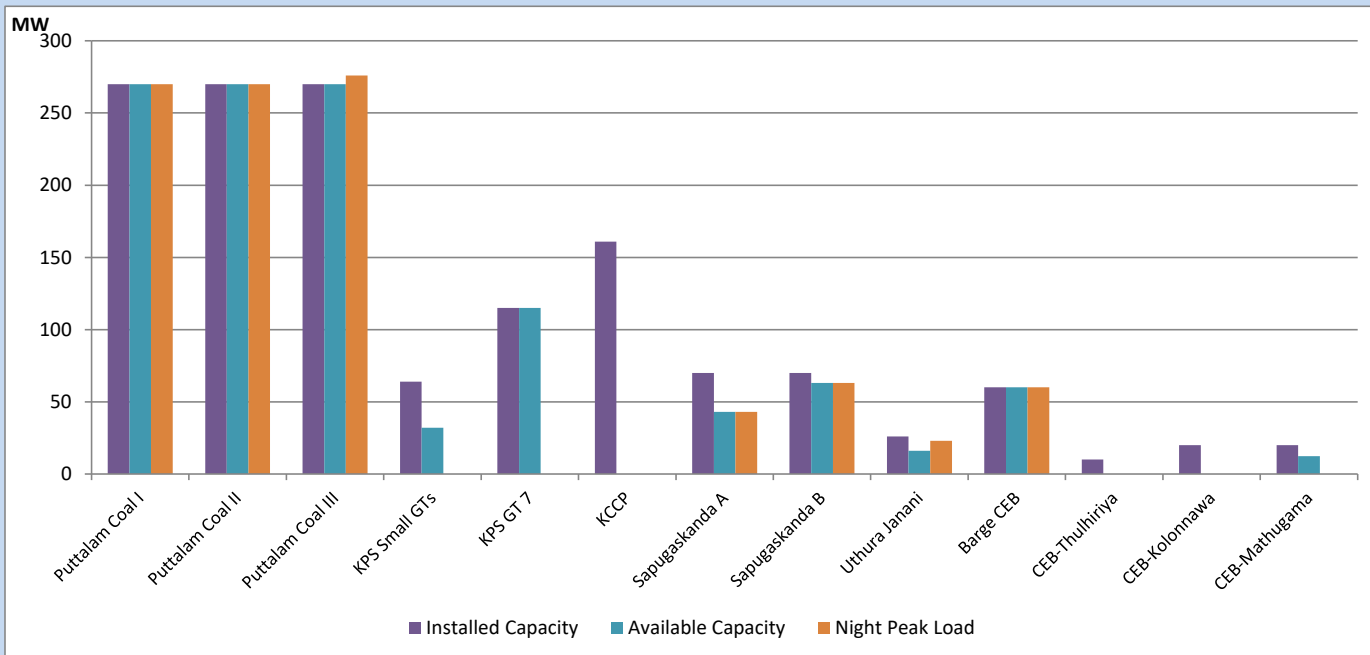
March 17, 2023



Available Generation is estimated based on plant availability at 6.00am on

March 18, 2023

CEB owned Thermal Plant Loading at the Night Peak

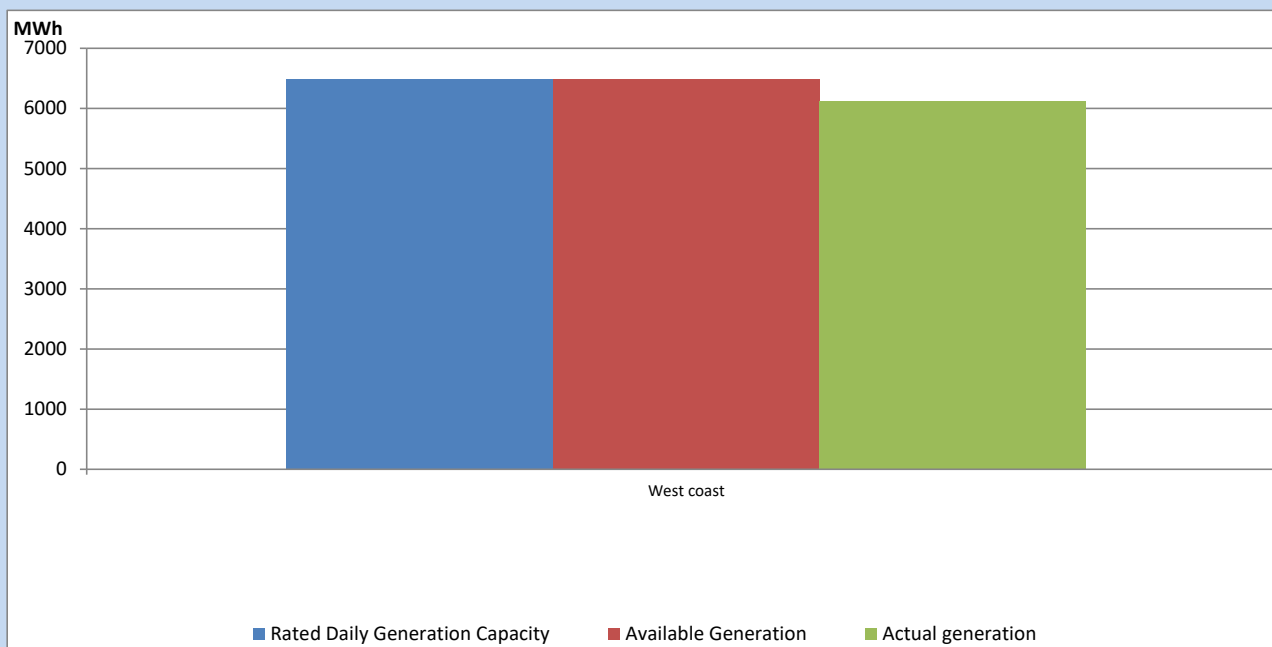


Note- Plant availability is recorded at 6.00 am on

March 18, 2023

IPP owned Thermal Plant Dispatch

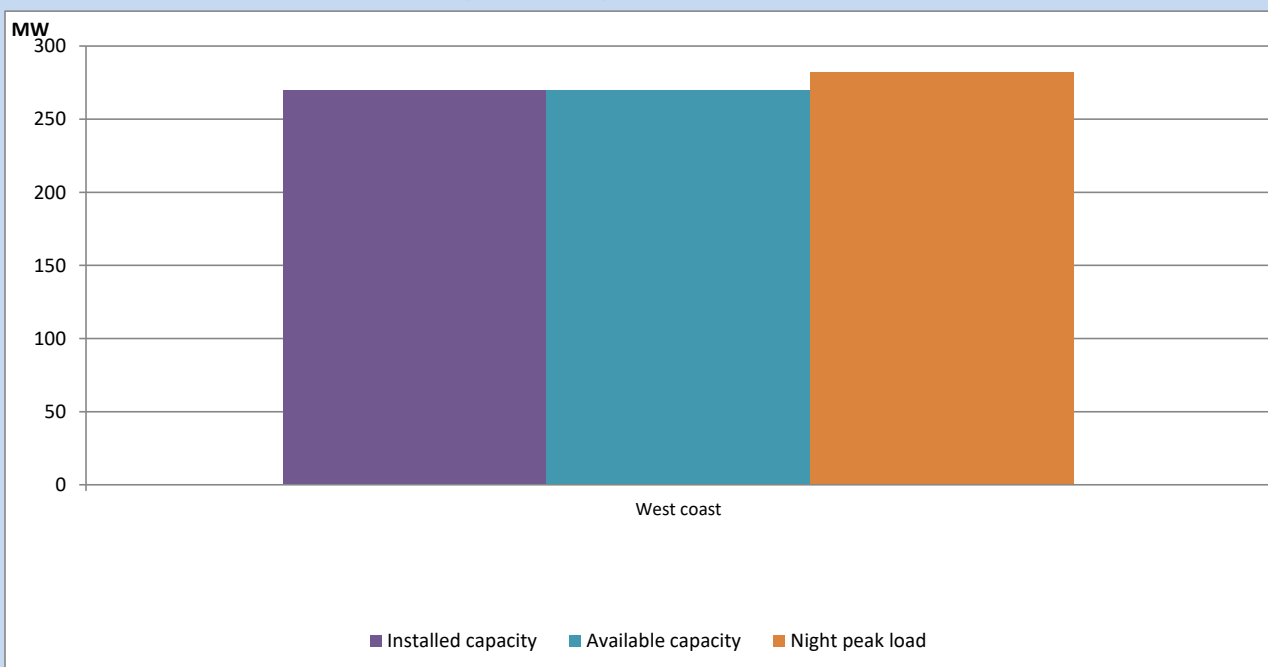
March 17, 2023



Available Generation is estimated based on plant availability at 6.00am on

March 18, 2023

IPP owned Thermal Plant Loading at the Night Peak

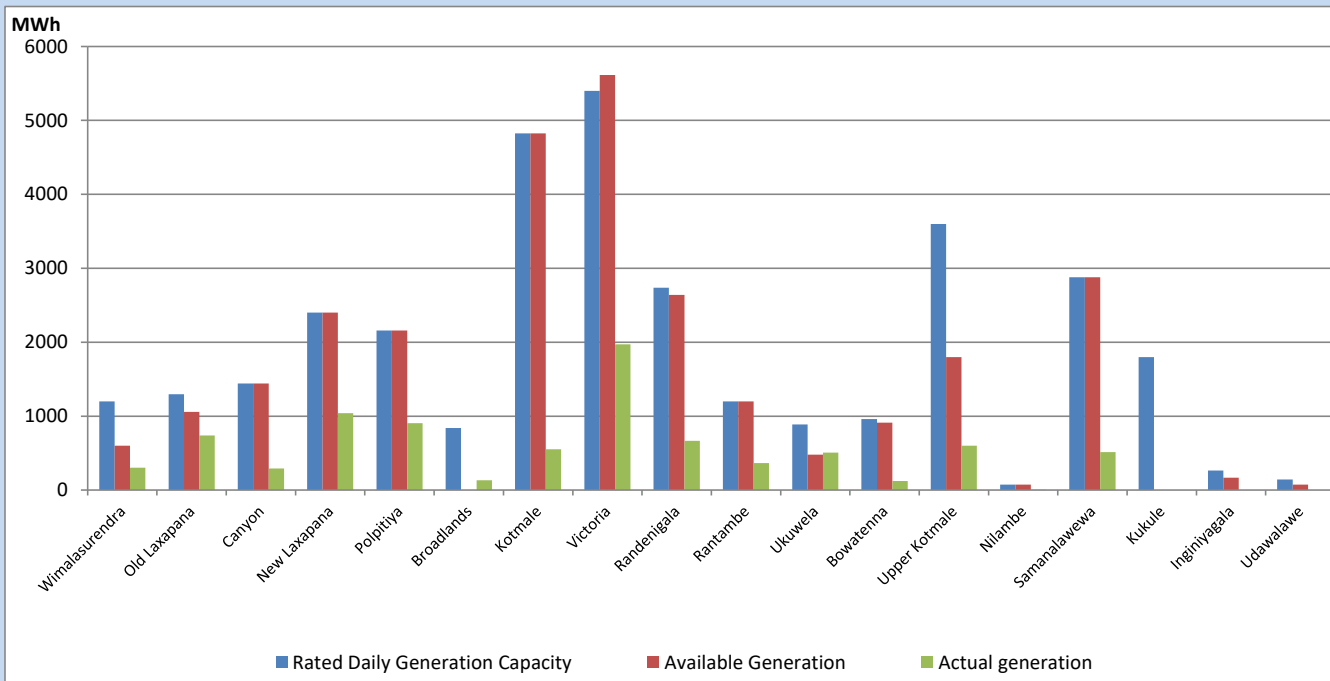


Note- Plant availability is recorded at 6.00 am on

March 18, 2023

Major Hydro Plant Dispatch

March 17, 2023

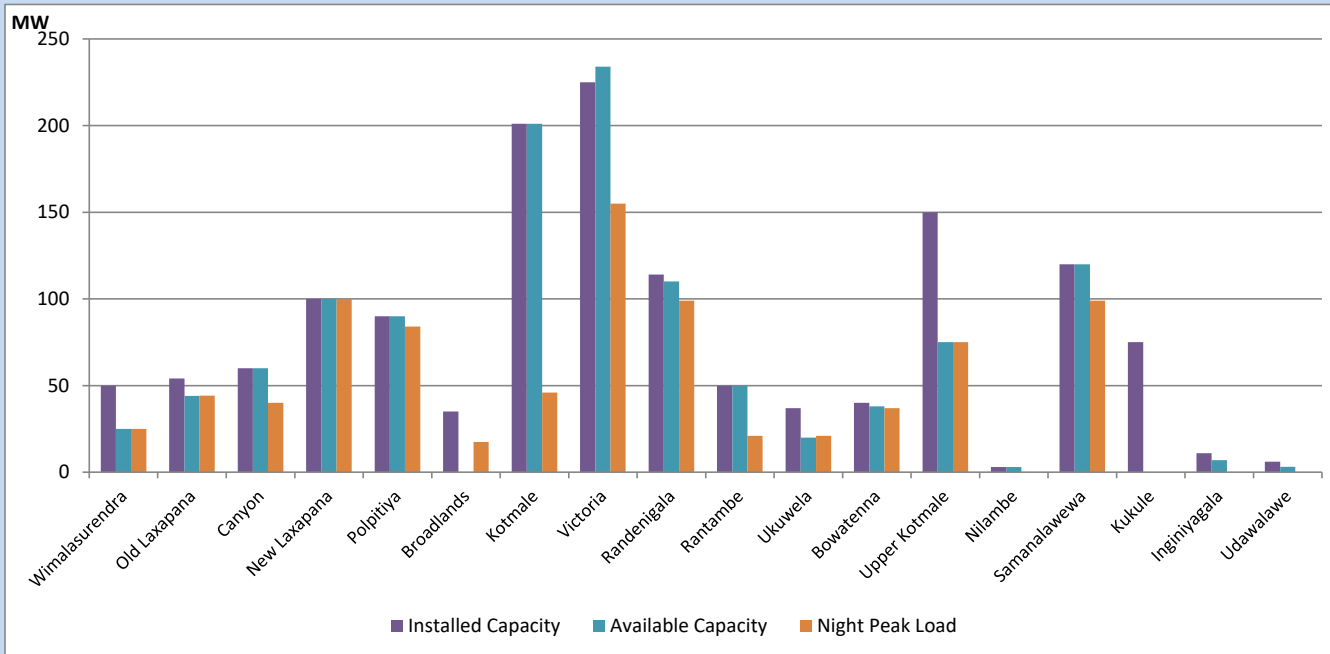


Available Generation is estimated based on plant availability at 6.00am on
Broadlands power plant is operating in the Commissioning Stage

March 18, 2023

Major Hydro Plant Loading at Night Peak

March 17, 2023



Note- Plant availability is recorded at 6.00 am on
Broadlands power plant is operating in the Commissioning Stage

March 18, 2023

Summary of Major Plant performance

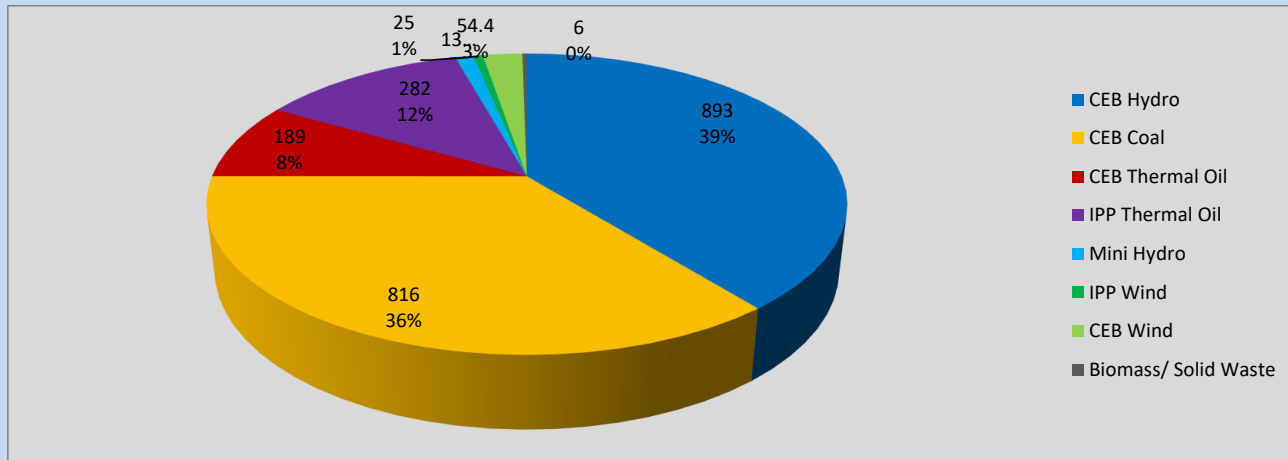
Plant	Installed Capacity	Plant Availability	Night peak Load	Plant Dispatch
	(MW)	(MW)	(MW)	(MWh)
Wimalasurendra	50	25	25	303
Old Laxapana	54	44	44	740
Canyon	60	60	40	293
New Laxapana	100	100	100	1,041
Polpitiya	90	90	84	904
Broadlands	35	0	17	132
Kotmale	201	201	46	550
Victoria	225	234	155	1,973
Randenigala	114	110	99	667
Rantambe	50	50	21	366
Ukuwela	37	20	21	505
Bowatenna	40	38	37	122
Upper Kotmale	150	75	75	599
Nilambe	3	3	0	6
Samanalawewa	120	120	99	513
Kukule	75	0	0	0
Inginiyagala	11	7	0	0
Udawalawe	6	3	0	0
Puttalam Coal I	270	270	270	6,468
Puttalam Coal II	270	270	270	6,472
Puttalam Coal III	270	270	276	6,606
KPS Small GTs	64	32	0	0
KPS GT 7	115	115	0	0
KCCP	161	0	0	0
Sapugaskanda A	70	43	43	925
Sapugaskanda B	70	63	63	1,355
Uthura Janani	26	16	23	440
Barge CEB	60	60	60	1,104
CEB-Thulhiriya	10	0	0	0
CEB-Kolonnawa	20	0	0	0
CEB-Mathugama	20	12	0	0
ACE Matara	24	0	0	0
Asia Power	50	0	0	0
Sojitz Kelanitissa	163	0	0	0
West Coast	270	270	282	6,129
Nothern Power	36	0	0	0
ACE Embilipitiya	93	0	0	0
Total	3,483	2,602	2,249	40,766

Plant availability is the availability recorded at 6 am on

March 18, 2023

Contribution to the Night Peak in MW

March 17, 2023

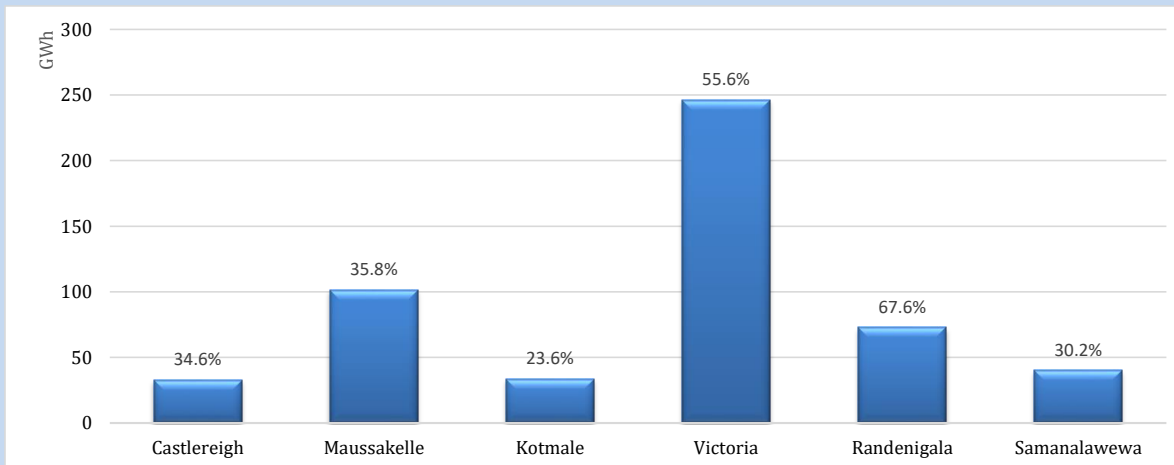


Night Peak*	2,278 MW
Day Peak	1,912 MW
Minimum Demand	1,204 MW

Above figures are excluding contribution from roof top solar, non telemetered solar and mini hydro plants

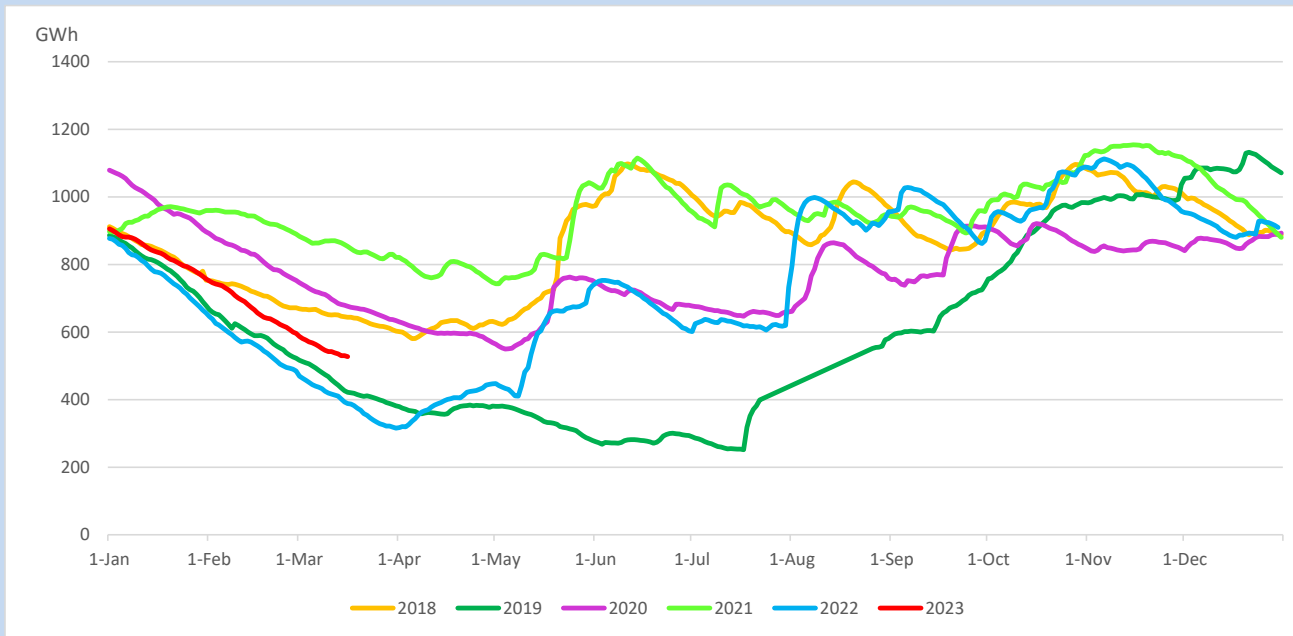
Reservoir Levels -

as at 06.00 Hr on March 18, 2023

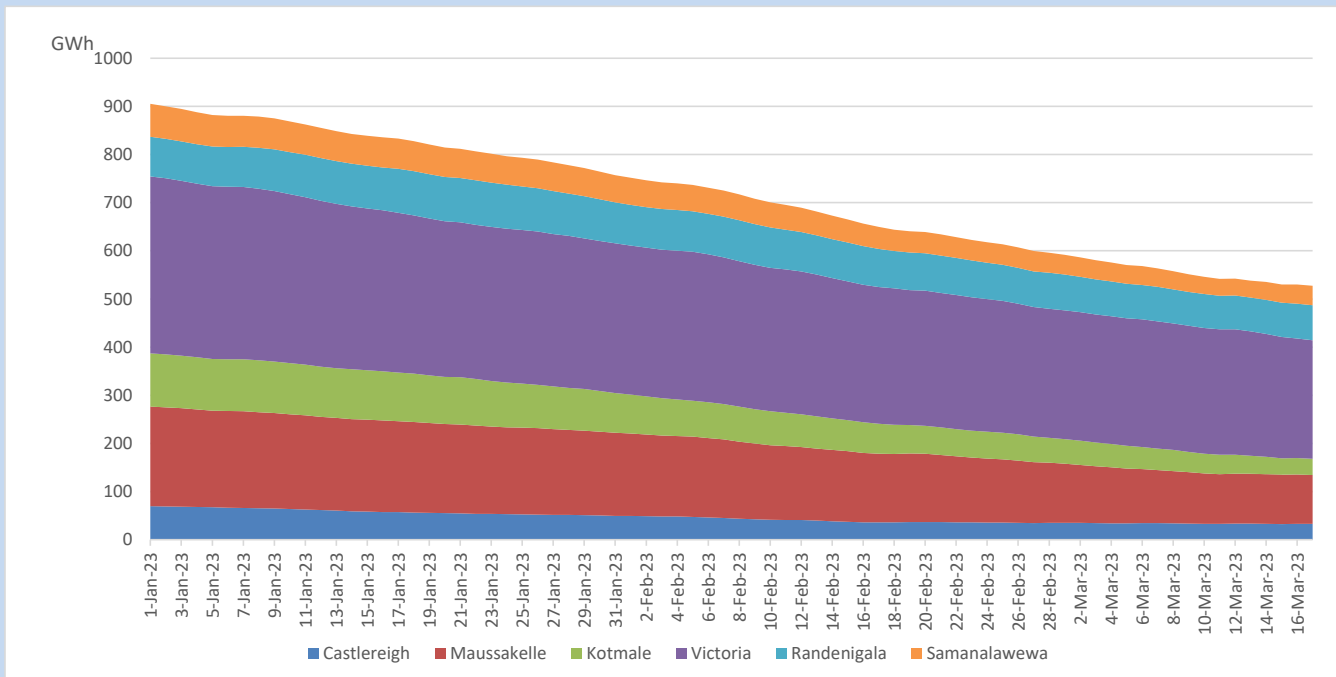


Total Reservoir Level	527.2 GWh
% of Total capacity	43.8%

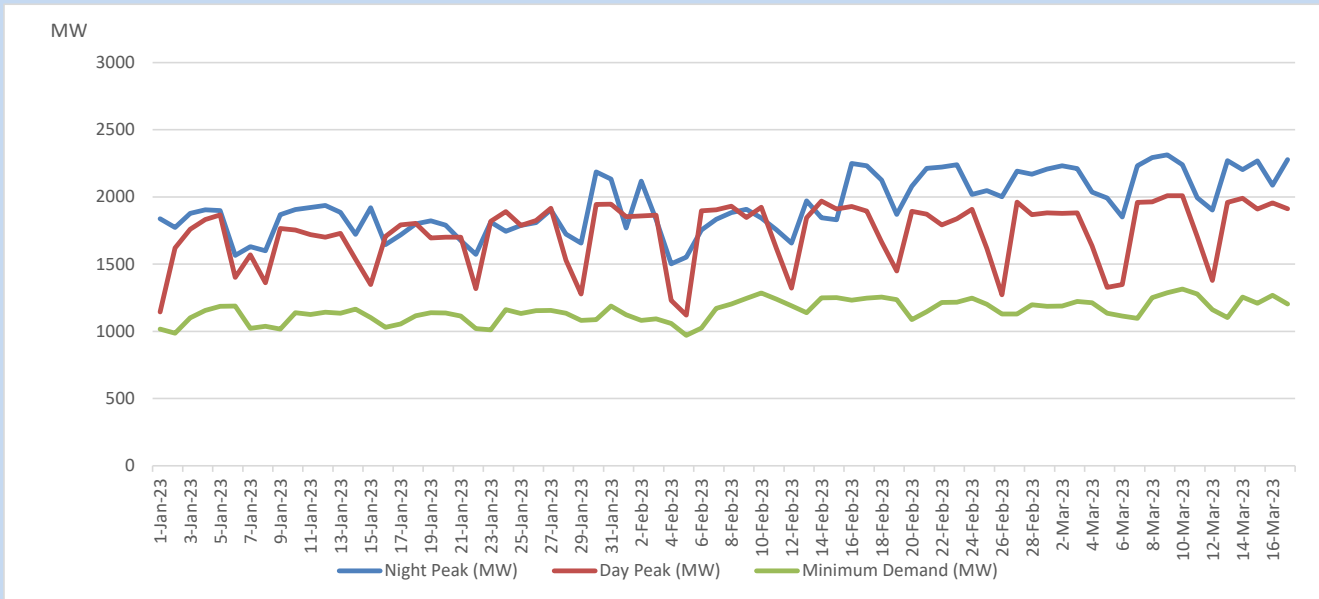
Comparison of Total Reservoir Storage Levels with Past Years



Variation of Major Hydro Reservoir Levels in the current year (GWh)



Variation of Demand during the current year

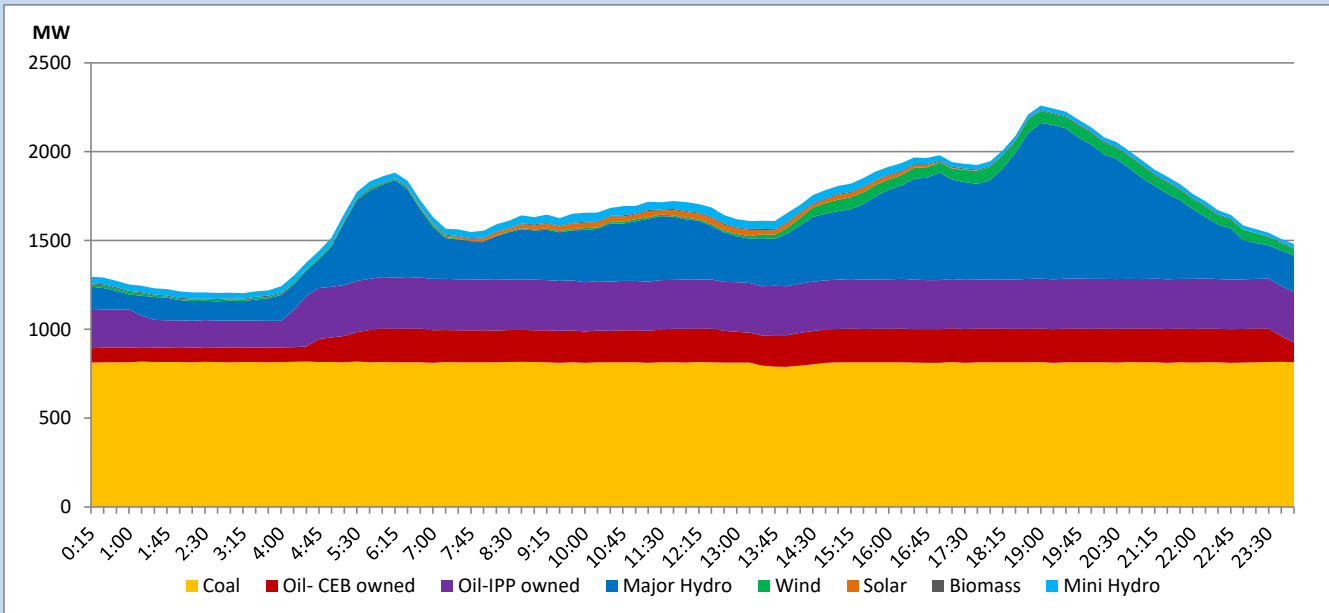


The above figures are excluding contribution from roof top solar, non telemetered solar and mini hydro plants

Daily Load Curve

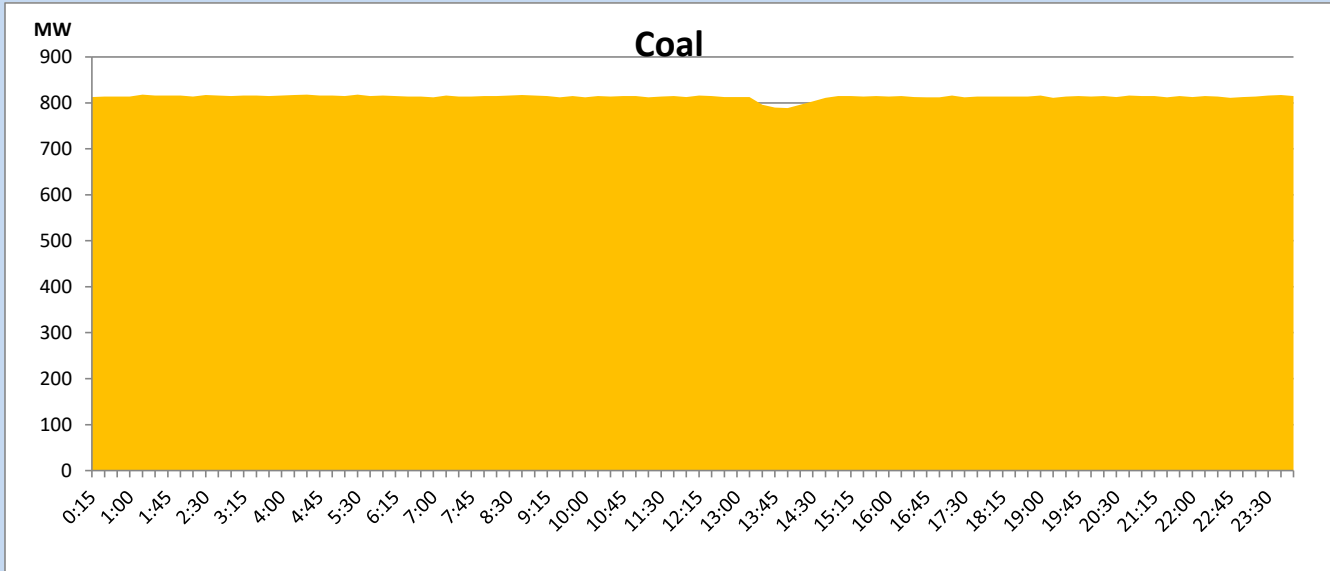
March 17, 2023

Solar and wind data is based on Telemetered Power Stations only



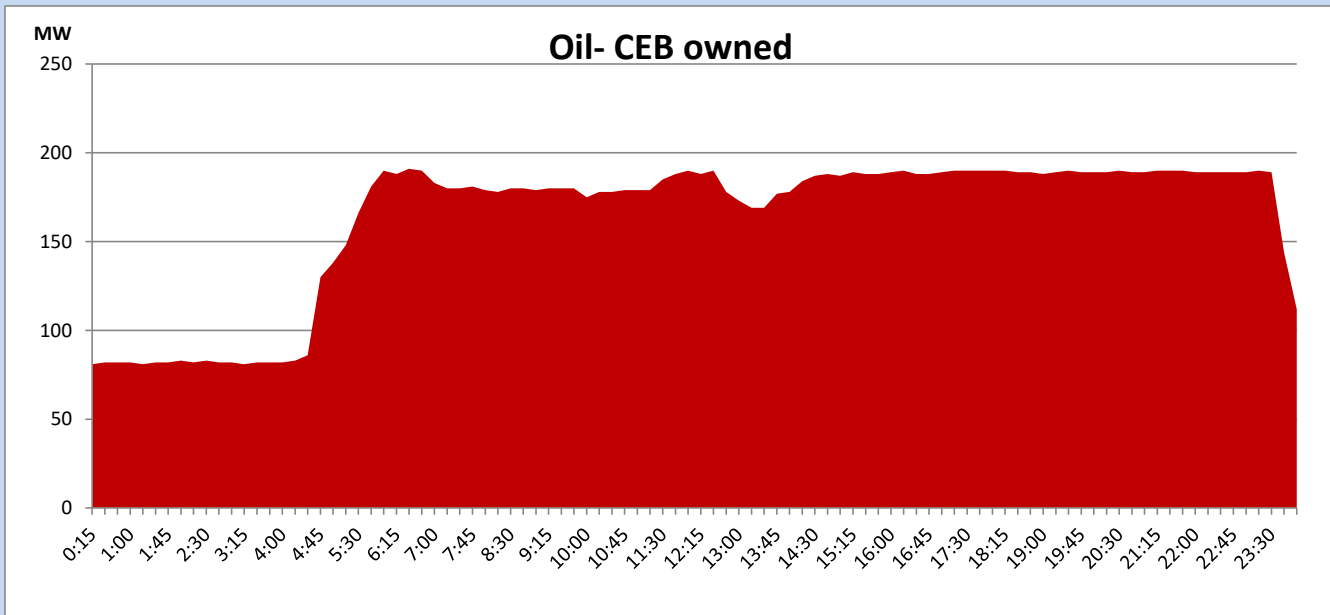
Coal Generation during

March 17, 2023



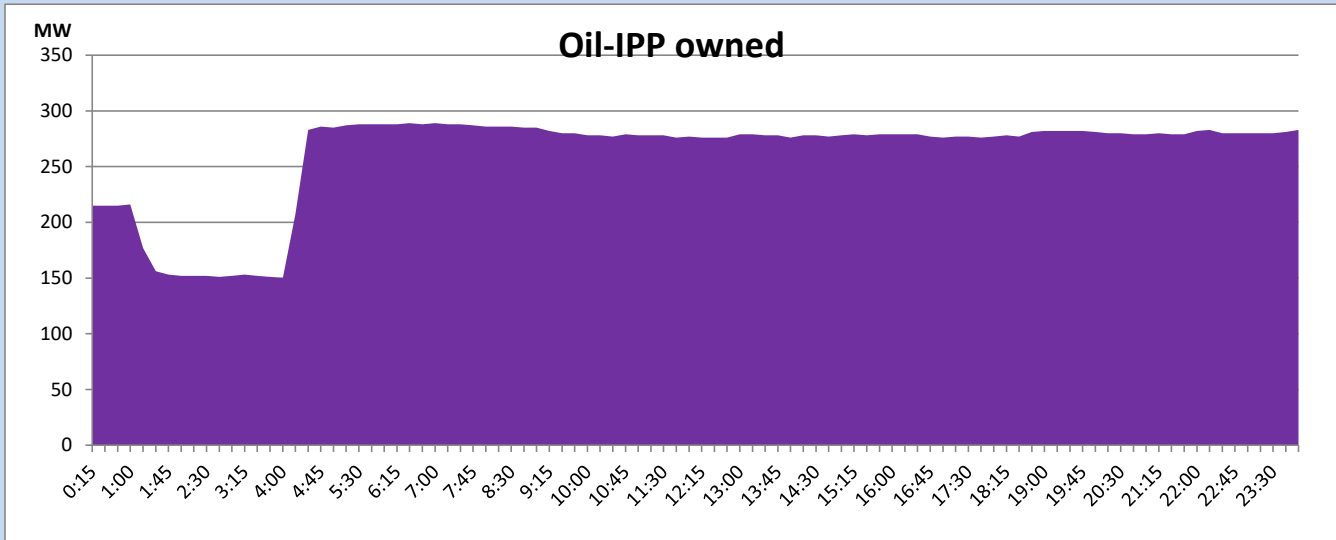
CEB Oil Plant Generation during

March 17, 2023



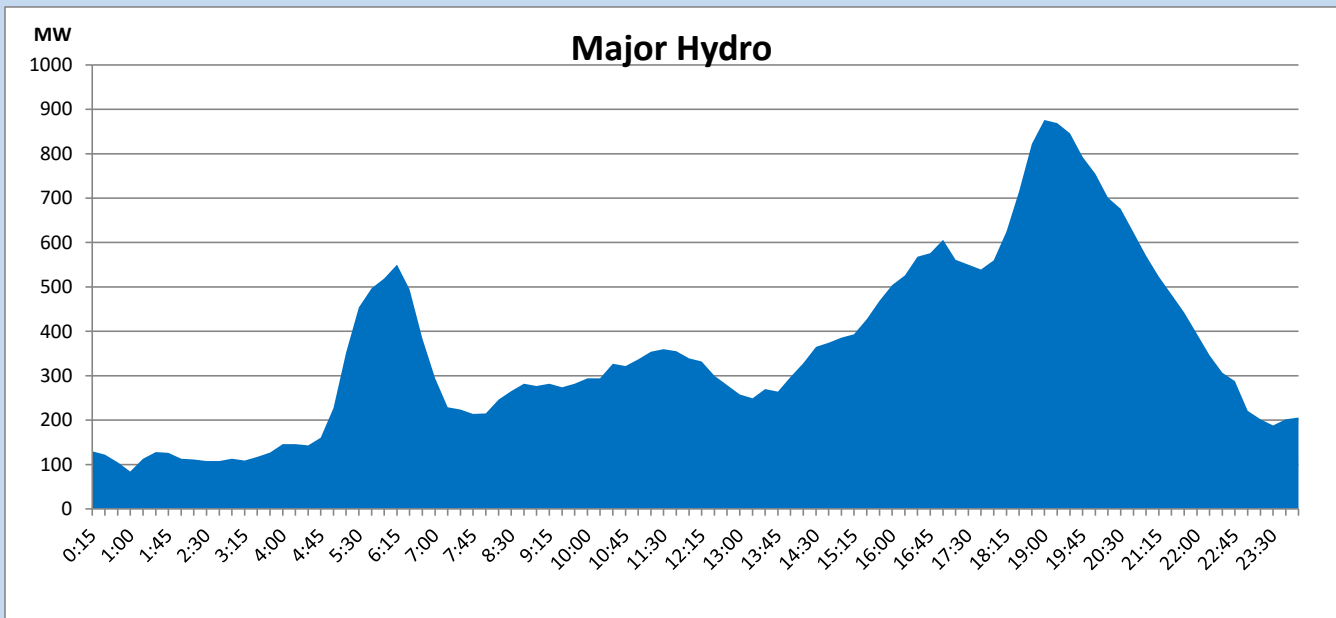
IPP Oil Plant Generation during

March 17, 2023



Major Hydro Generation during

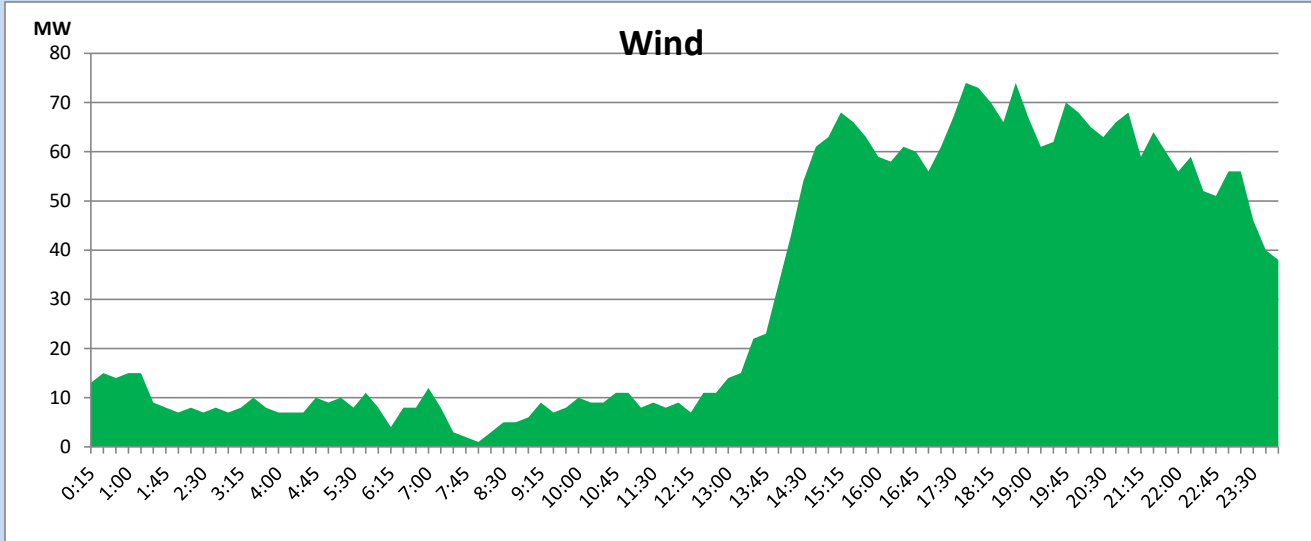
March 17, 2023



Wind Generation during

March 17, 2023

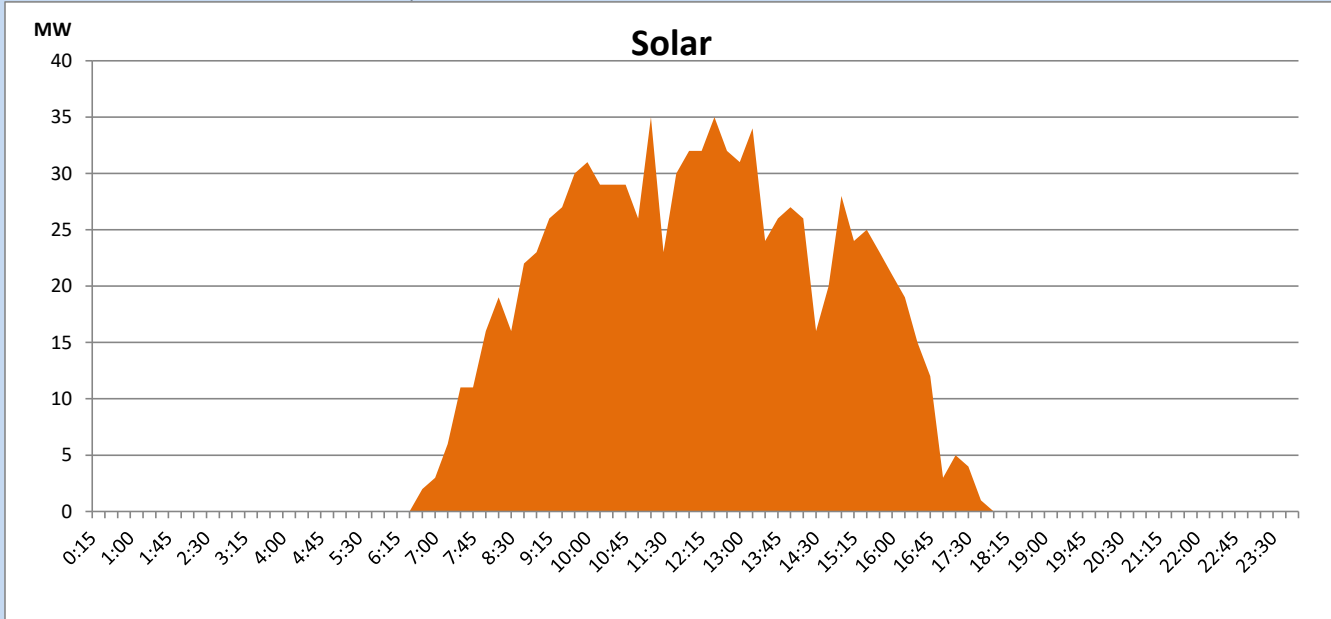
Based on Telemetered Power Stations only



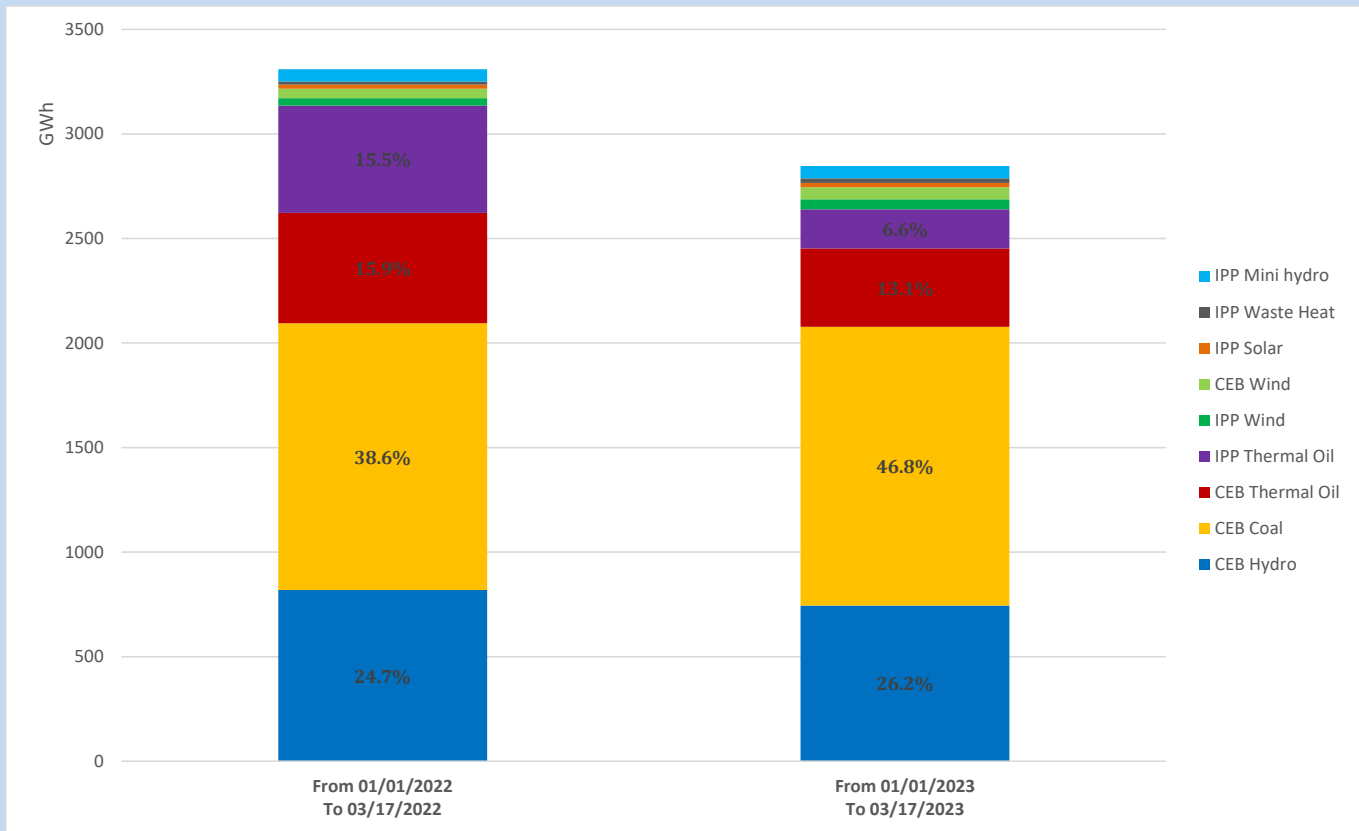
Solar Generation during

March 17, 2023

Based on Telemetered Power Stations only



Cumulative Dispatch Comparison with Last Year



Thermal Plant Fuel types

Power Station	Primary Fuel
CEB Thermal	
Sapugaskanda 1	Heavy Fuel
Sapugaskanda 2	Heavy Fuel
Kelanitissa Small Gas Turbines	Auto Diesel
GT 7 - Kelanitissa	Auto Diesel
Kelanitissa CCY	Naphtha or Diesel
Lakvijaya 1	Coal
Lakvijaya 2	Coal
Lakvijaya 3	Coal
Uthuru Janani	Heavy Fuel
Barge CEB	Heavy Fuel

Power Station	Primary Fuel
Private Thermal	
West Coast	Auto Diesel / Heavy Fuel

Major Incidents reported during the day

March 17, 2023

1) Nil.