

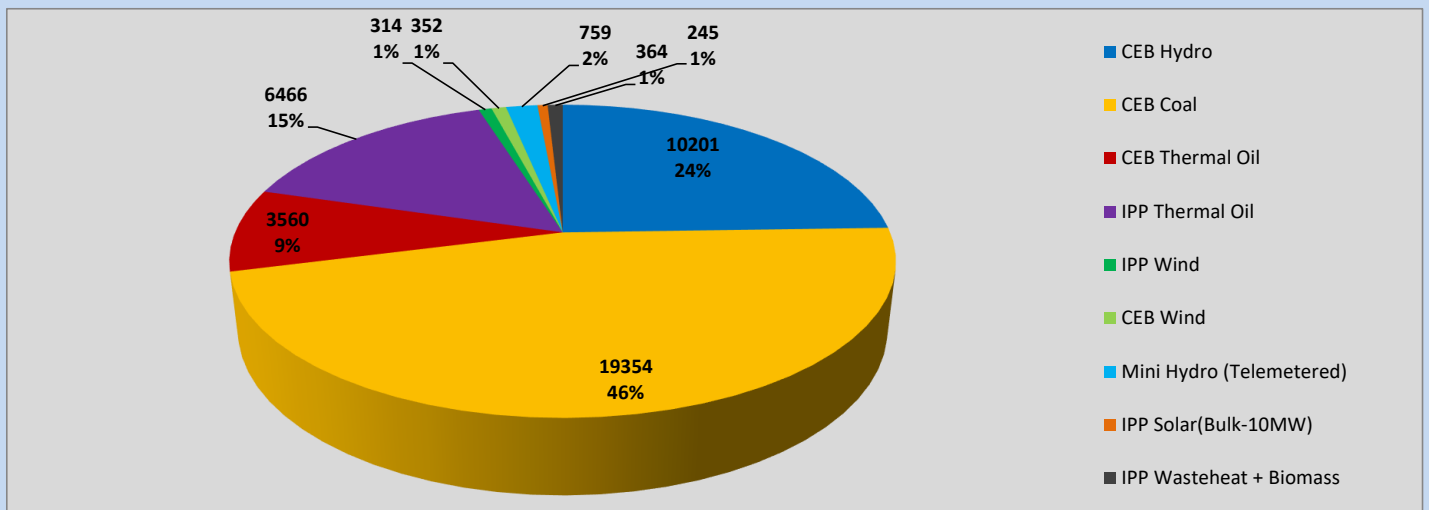
Generation and Reservoirs Statistics

March 14, 2023



PUBLIC UTILITIES COMMISSION OF SRI LANKA

Daily Generation Mix in MWh



Total Generation (Excluding estimated figures) =



41,615 MWh

Estimated figures of CEB generation report

Estimated unserved energy = 0.00 GWh
 Estimated Mini Hydro (Non telemetered) = 551 MWh
 Estimated IPP Solar PV (Bulk 1-10MW) = 304 MWh
 Estimated Solar Roof Top PV = 1490 MWh

Cumulative Dispatch

Following data excludes the contribution from roof top solar, non telemetered solar and mini hydro plants

For Current Month

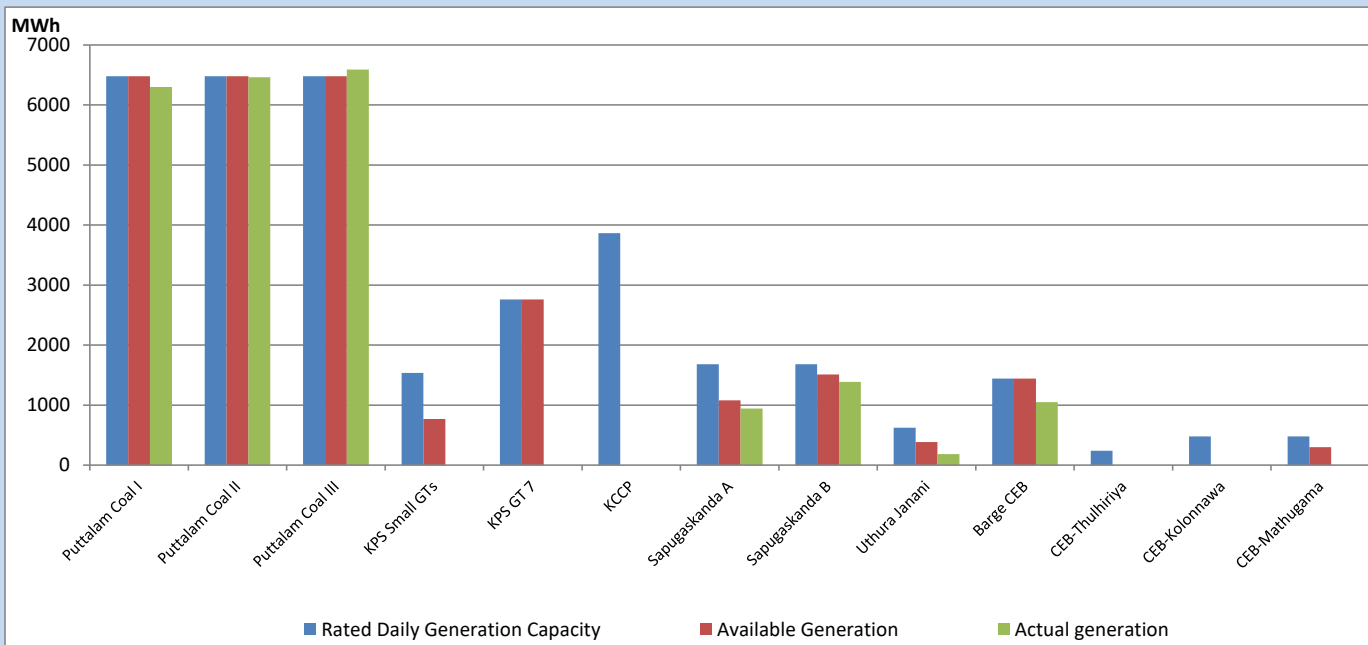
Category	Dispatch (GWh)	Percentage
CEB Hydro	115	20.93%
CEB Coal	270	49.31%
CEB Thermal Oil	86	15.70%
IPP Thermal	38	6.93%
SPP Wind	9	1.71%
CEB Wind	12	2.16%
Mini Hydro (Telemetered)	10	1.88%
IPP Solar (Bulk-10MW)	4	0.66%
IPP Wasteheat + BMP	4	0.72%
Total	548	

For Current Year

Category	Dispatch (GWh)	Percentage
CEB Hydro	716	26.29%
CEB Coal	1,274	46.79%
CEB Thermal Oil	363	13.33%
IPP Thermal	169	6.21%
SPP Wind	47	1.74%
CEB Wind	56	2.07%
Mini Hydro (Telemetered)	56	2.07%
IPP Solar (Bulk-10MW)	20	0.74%
IPP Wasteheat	21	0.77%
Total	2,724	

CEB owned Thermal Plant Dispatch

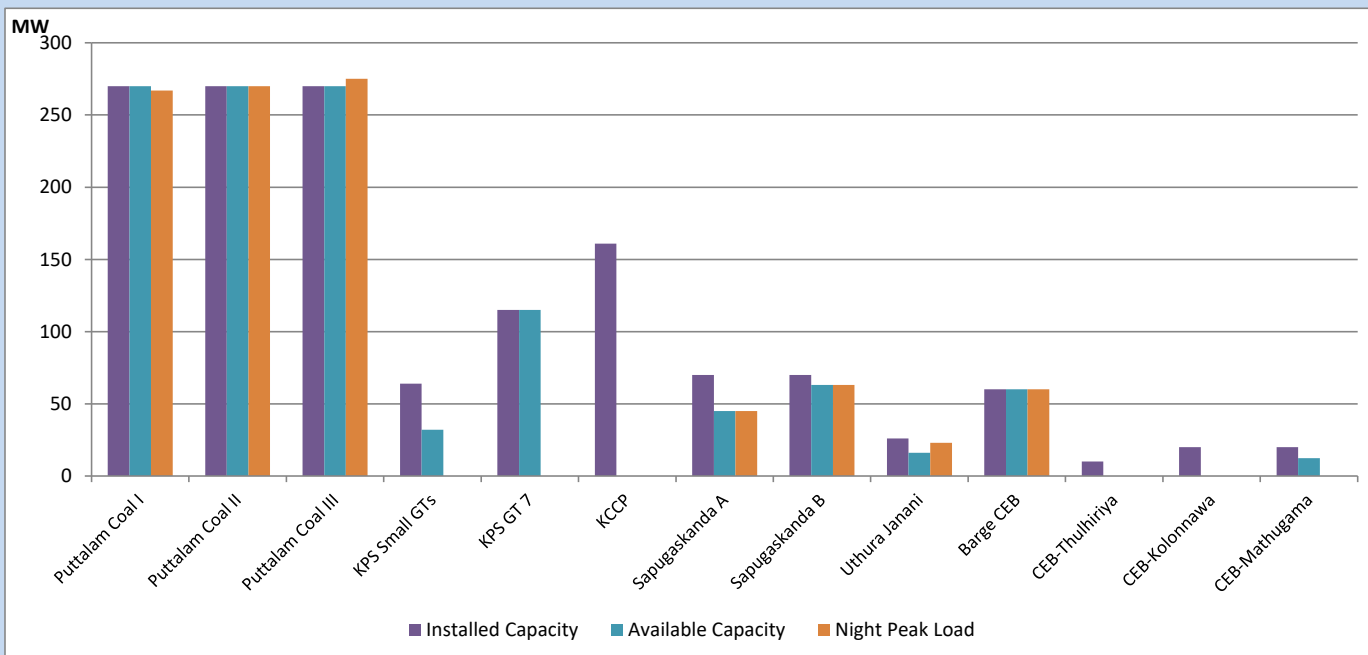
March 14, 2023



Available Generation is estimated based on plant availability at 6.00am on

March 15, 2023

CEB owned Thermal Plant Loading at the Night Peak

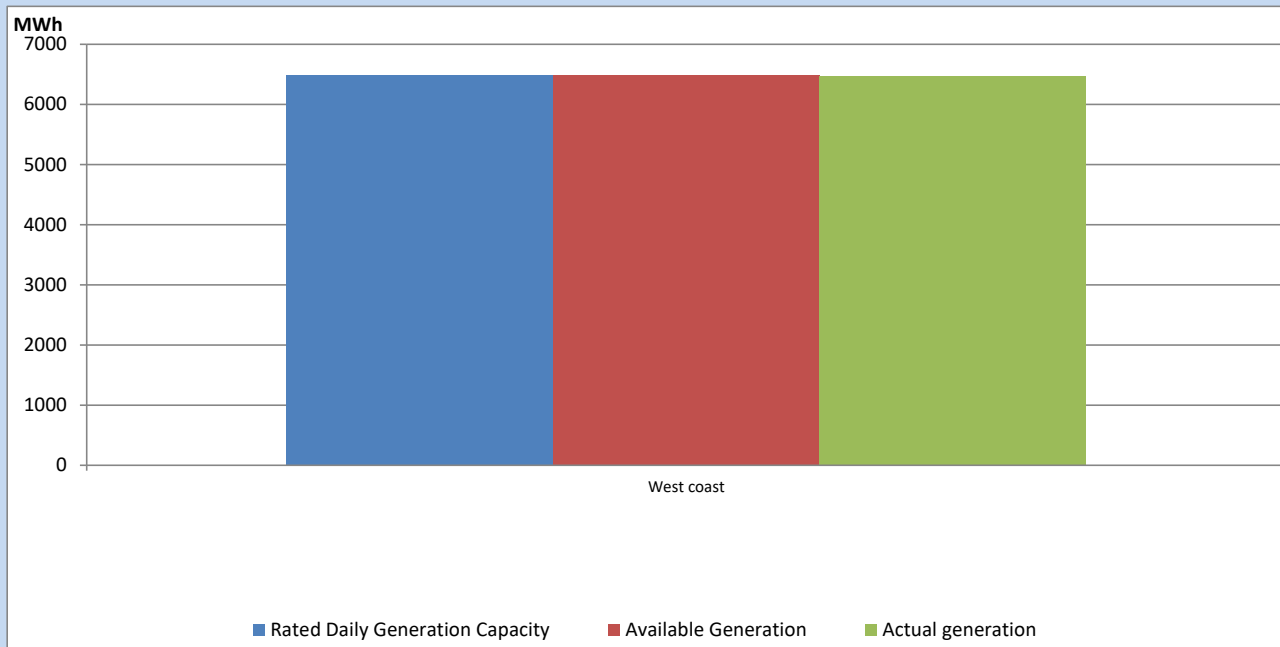


Note- Plant availability is recorded at 6.00 am on

March 15, 2023

IPP owned Thermal Plant Dispatch

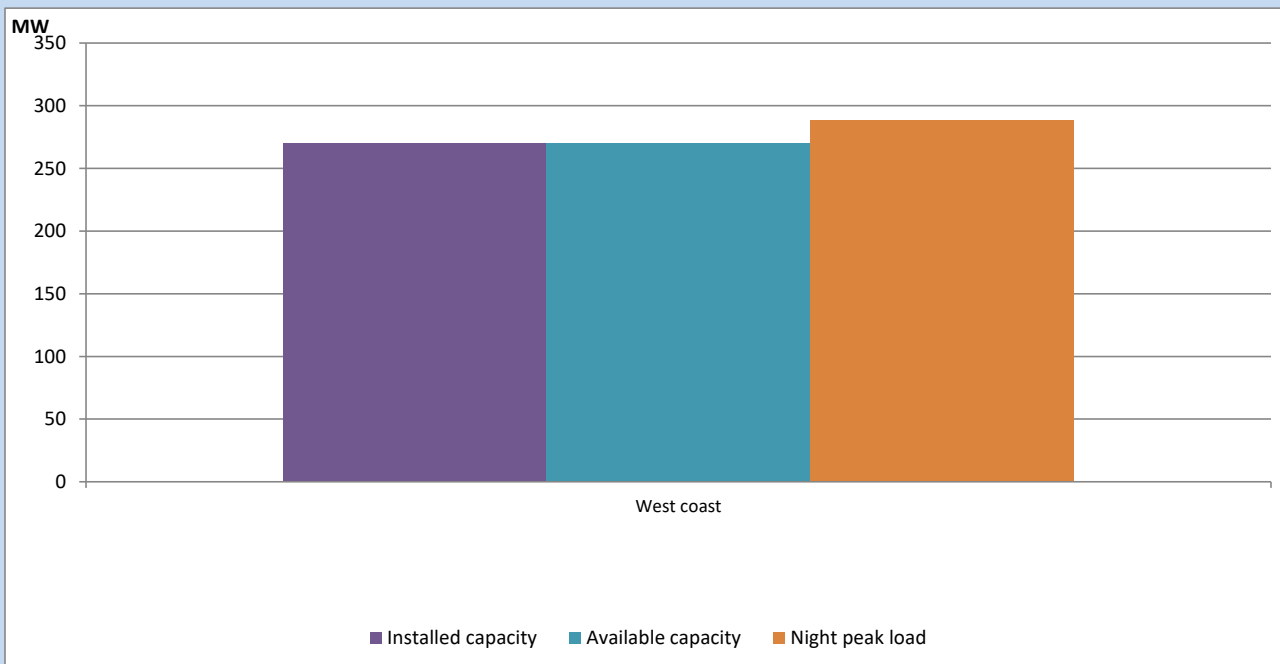
March 14, 2023



Available Generation is estimated based on plant availability at 6.00am on

March 15, 2023

IPP owned Thermal Plant Loading at the Night Peak

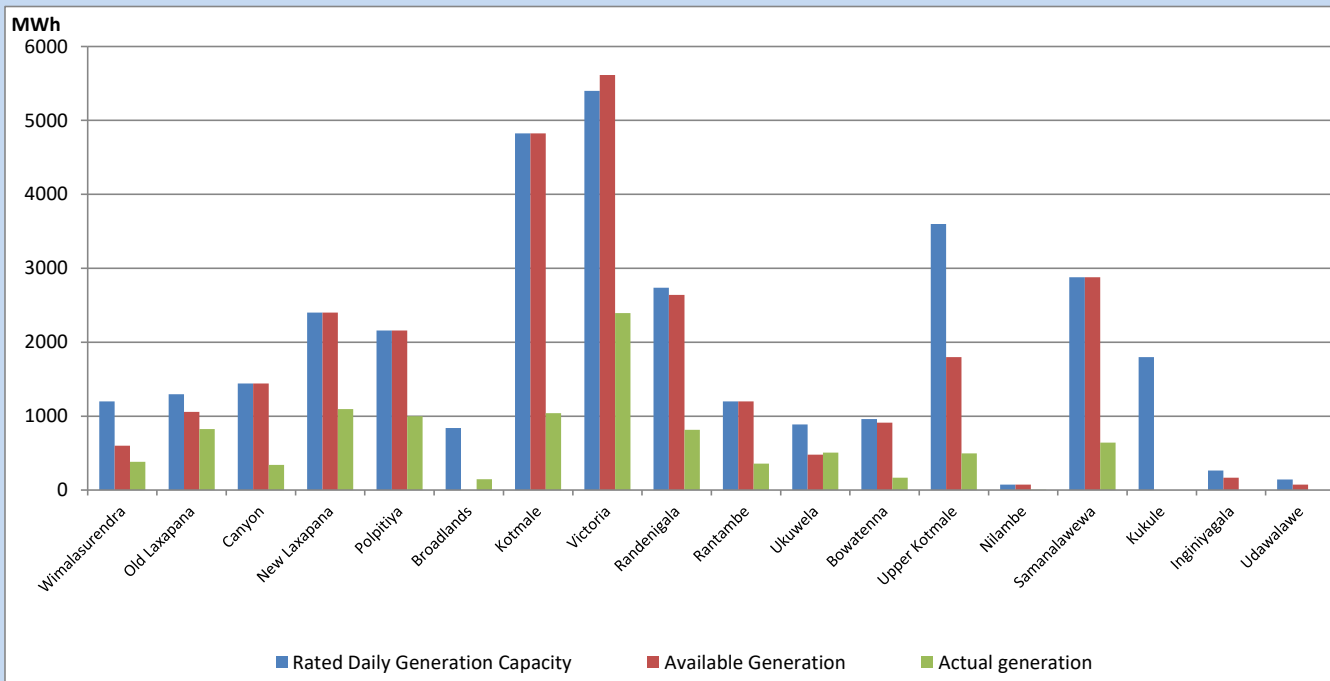


Note- Plant availability is recorded at 6.00 am on

March 15, 2023

Major Hydro Plant Dispatch

March 14, 2023

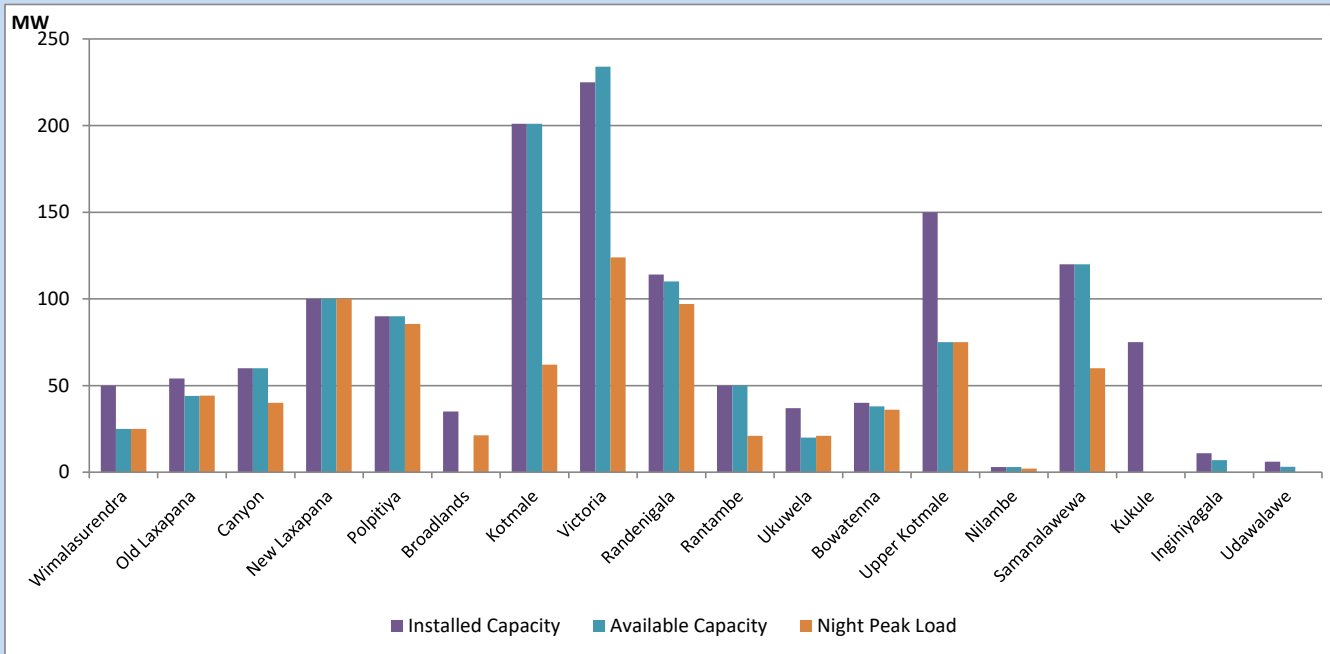


Available Generation is estimated based on plant availability at 6.00am on
Broadlands power plant is operating in the Commissioning Stage

March 15, 2023

Major Hydro Plant Loading at Night Peak

March 14, 2023



Note- Plant availability is recorded at 6.00 am on

March 15, 2023

Broadlands power plant is operating in the Commissioning Stage

Summary of Major Plant performance

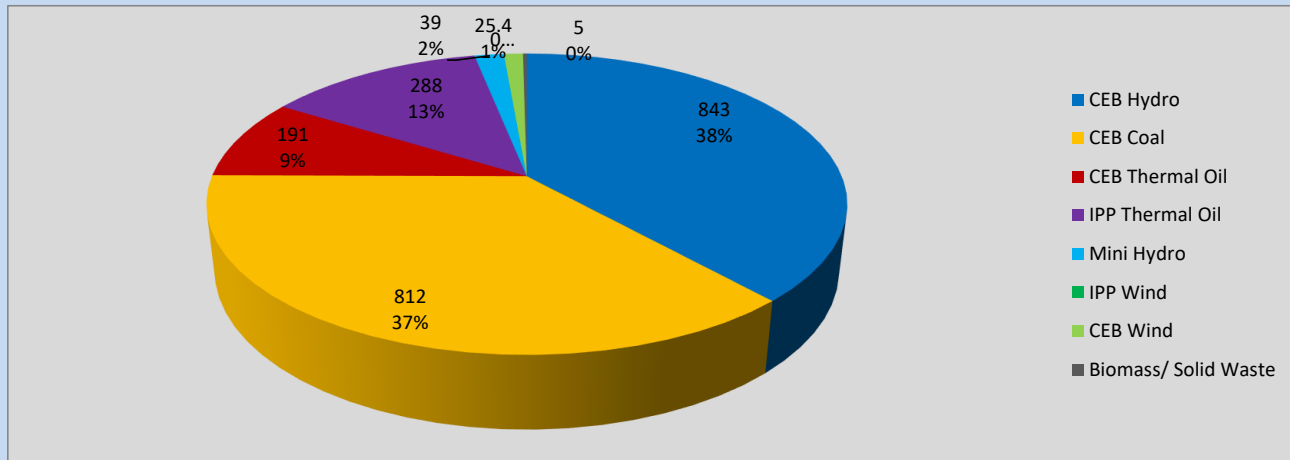
Plant	Installed Capacity	Plant Availability	Night peak Load	Plant Dispatch
	(MW)	(MW)	(MW)	(MWh)
Wimalasurendra	50	25	25	382
Old Laxapana	54	44	44	824
Canyon	60	60	40	339
New Laxapana	100	100	100	1,094
Polpitiya	90	90	86	999
Broadlands	35	0	21	145
Kotmale	201	201	62	1,040
Victoria	225	234	124	2,393
Randenigala	114	110	97	814
Rantambe	50	50	21	356
Ukuwela	37	20	21	505
Bowatenna	40	38	36	166
Upper Kotmale	150	75	75	496
Nilambe	3	3	2	6
Samanalawewa	120	120	60	642
Kukule	75	0	0	0
Inginiyagala	11	7	0	0
Udawalawe	6	3	0	0
Puttalam Coal I	270	270	267	6,300
Puttalam Coal II	270	270	270	6,464
Puttalam Coal III	270	270	275	6,590
KPS Small GTs	64	32	0	0
KPS GT 7	115	115	0	0
KCCP	161	0	0	0
Sapugaskanda A	70	45	45	943
Sapugaskanda B	70	63	63	1,387
Uthura Janani	26	16	23	182
Barge CEB	60	60	60	1,048
CEB-Thulhiriya	10	0	0	0
CEB-Kolonnawa	20	0	0	0
CEB-Mathugama	20	12	0	0
ACE Matara	24	0	0	0
Asia Power	50	0	0	0
Sojitz Kelanitissa	163	0	0	0
West Coast	270	270	288	6,466
Nothern Power	36	0	0	0
ACE Embilipitiya	93	0	0	0
Total	3,483	2,604	2,175	41,615

Plant availability is the availability recorded at 6 am on

March 15, 2023

Contribution to the Night Peak in MW

March 14, 2023

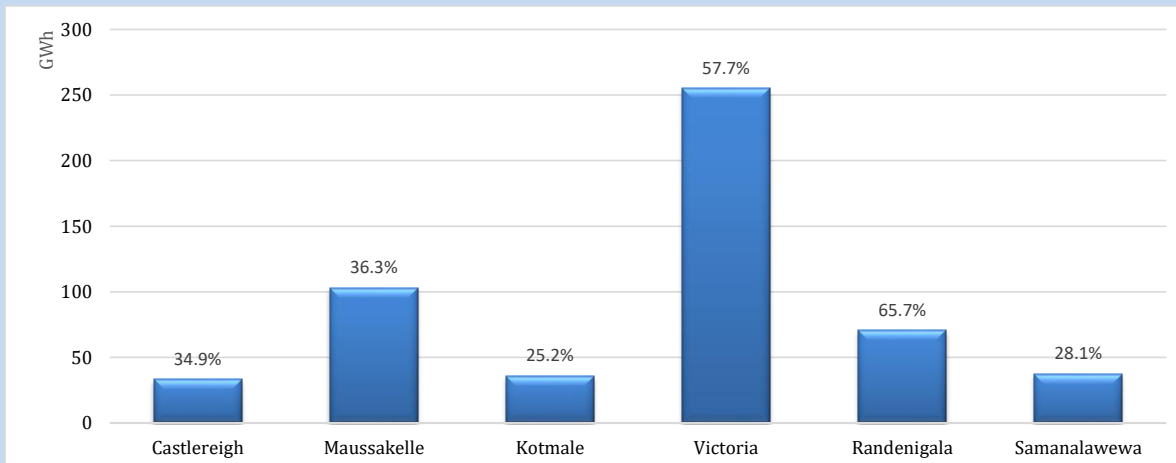


Night Peak*	2,204 MW
Day Peak	1,990 MW
Minimum Demand	1,256 MW

Above figures are excluding contribution from roof top solar, non telemetered solar and mini hydro plants

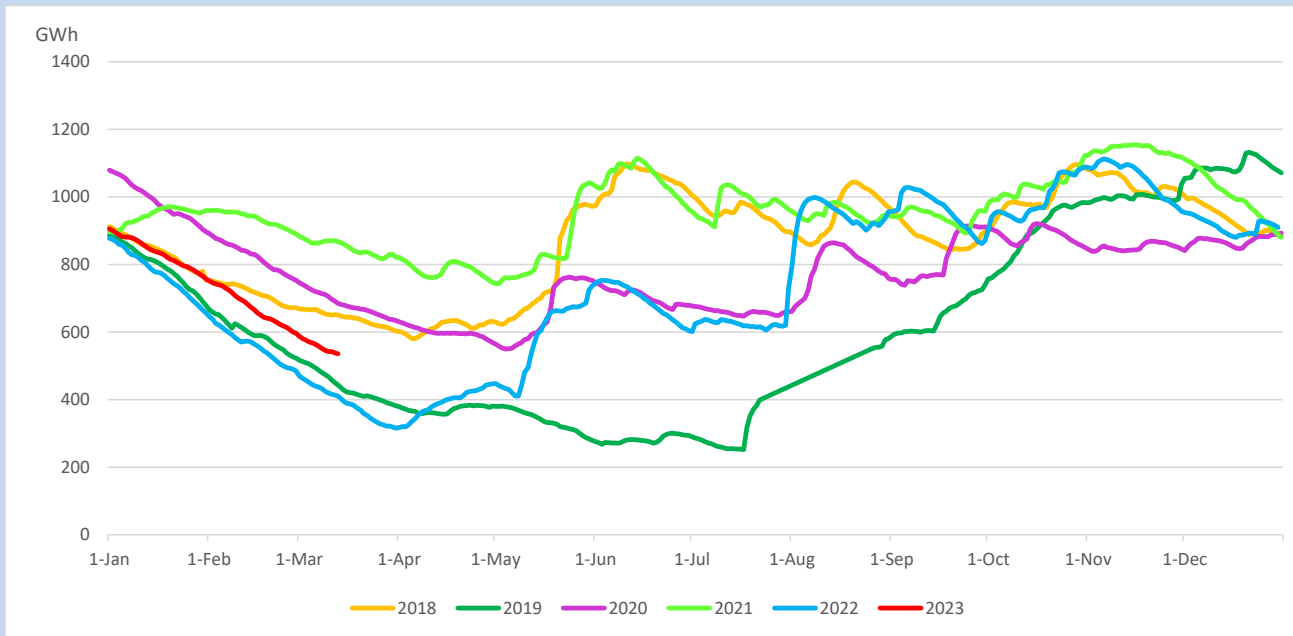
Reservoir Levels -

as at 06.00 Hr on March 15, 2023

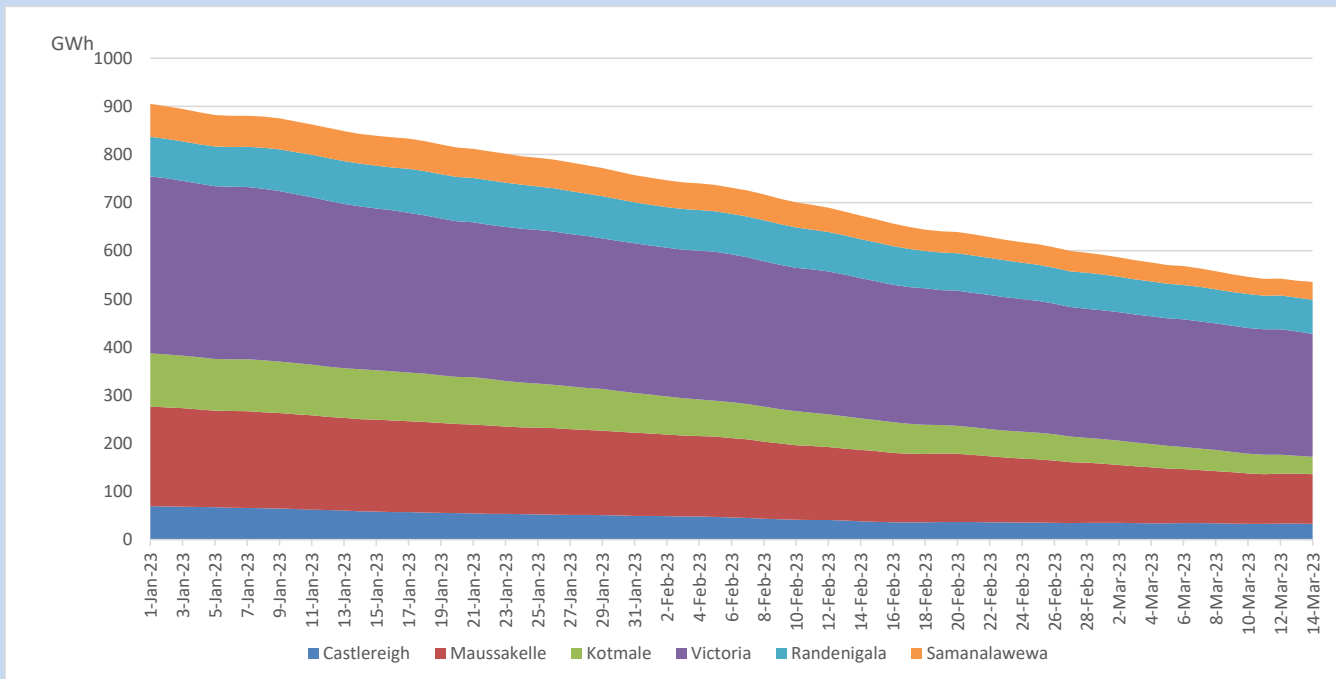


Total Reservoir Level	535.5 GWh
% of Total capacity	44.5%

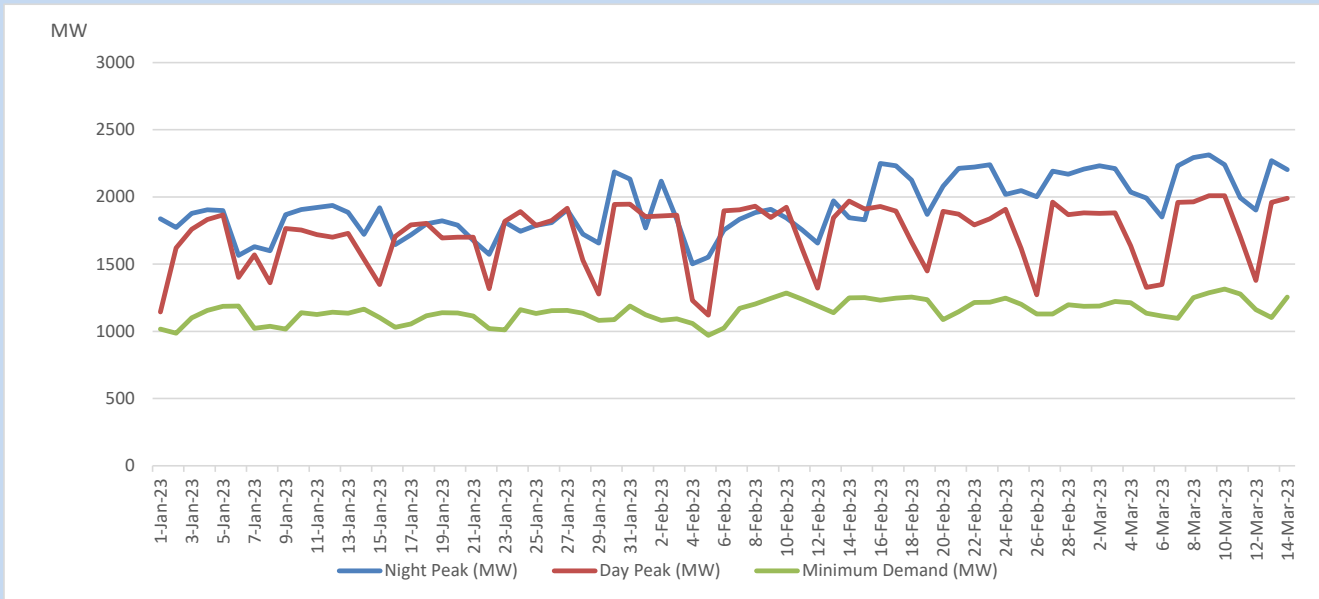
Comparison of Total Reservoir Storage Levels with Past Years



Variation of Major Hydro Reservoir Levels in the current year (GWh)



Variation of Demand during the current year

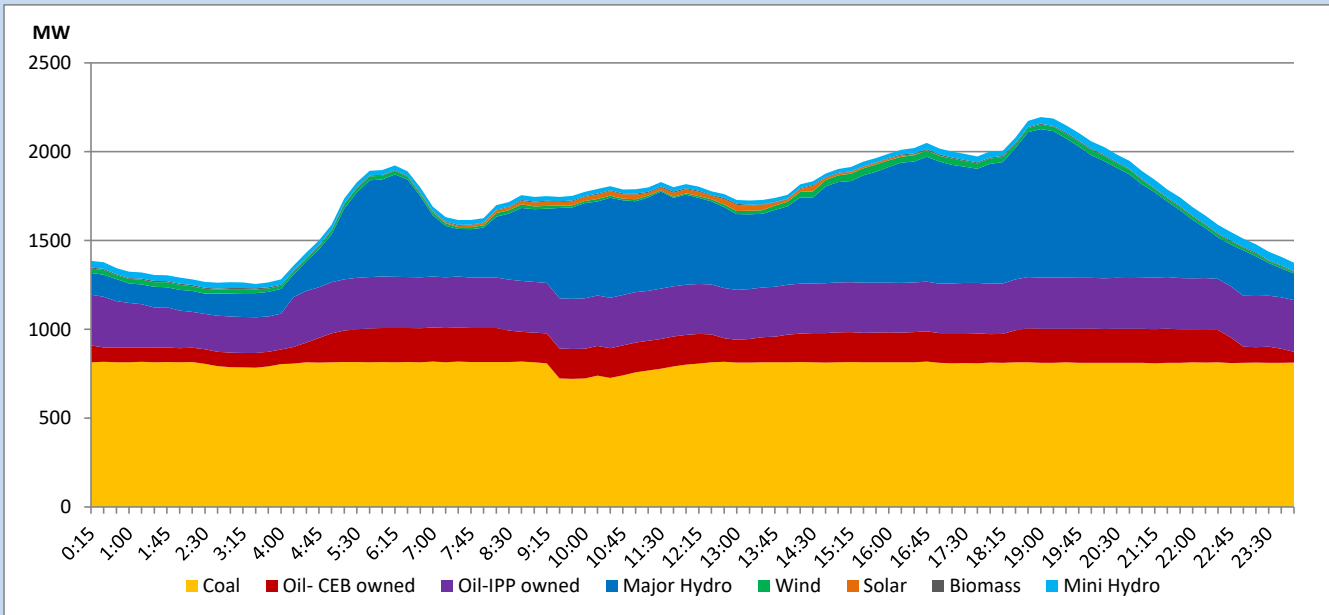


The above figures are excluding contribution from roof top solar, non telemetered solar and mini hydro plants

Daily Load Curve

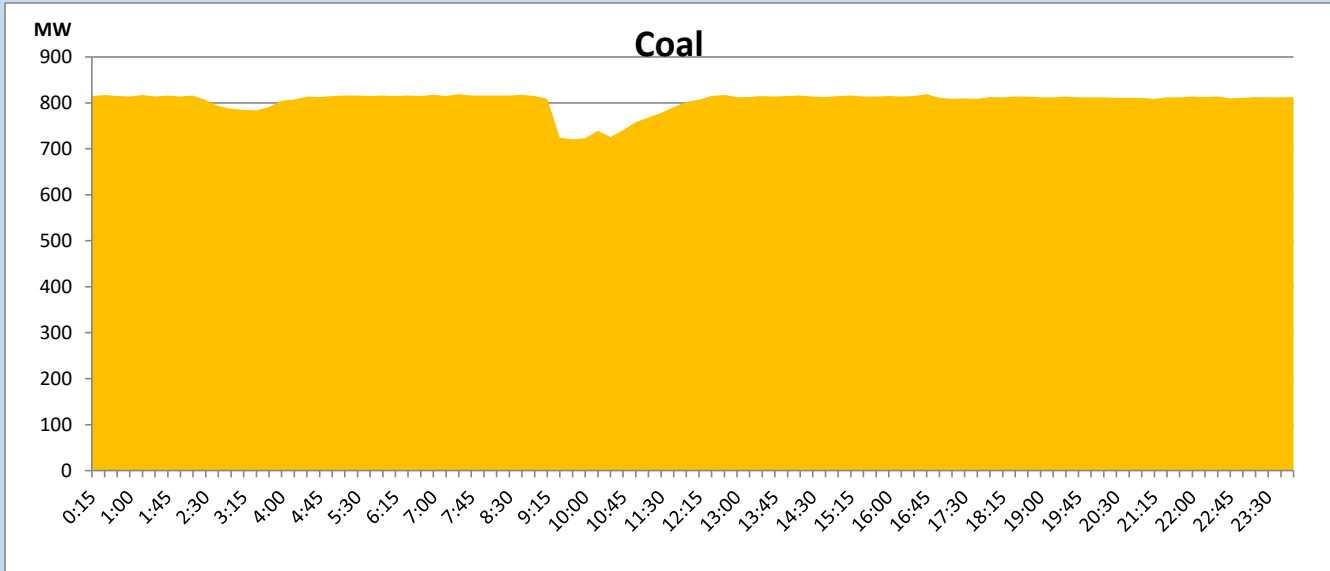
March 14, 2023

Solar and wind data is based on Telemetered Power Stations only



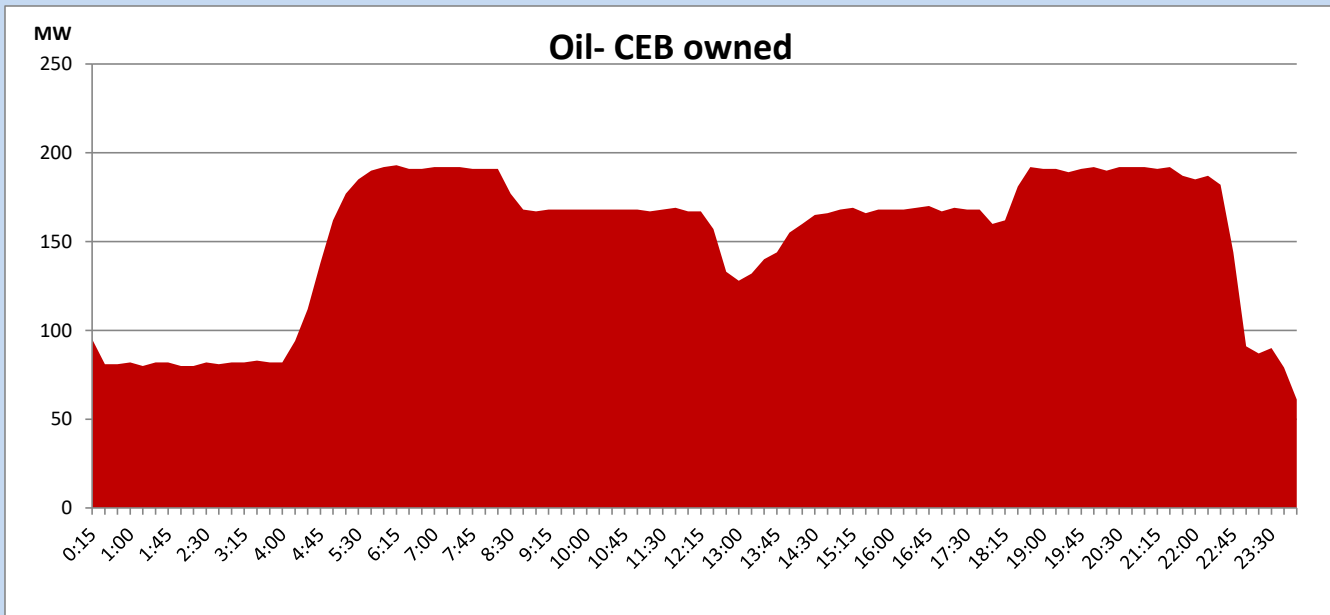
Coal Generation during

March 14, 2023



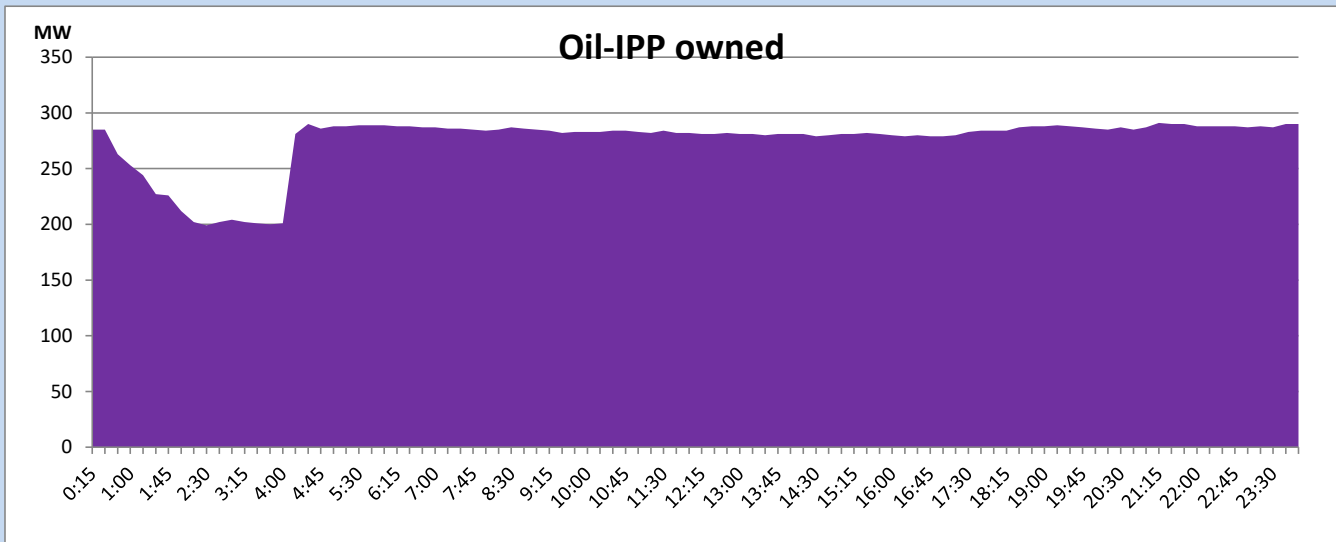
CEB Oil Plant Generation during

March 14, 2023



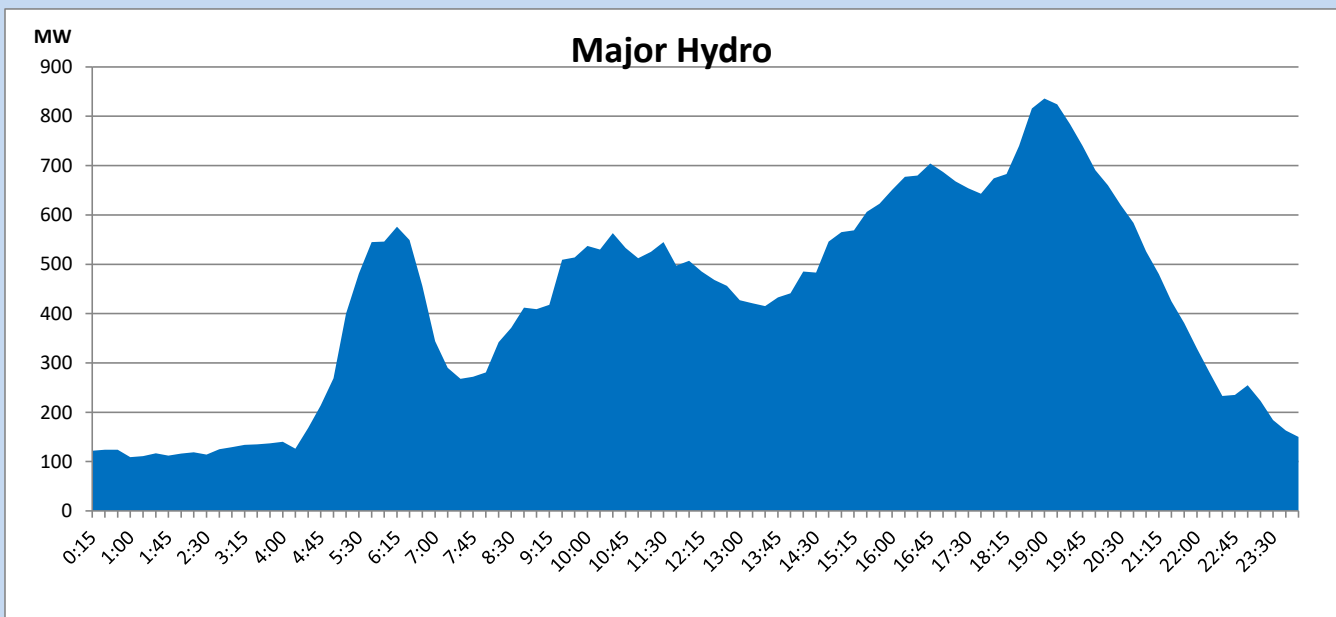
IPP Oil Plant Generation during

March 14, 2023



Major Hydro Generation during

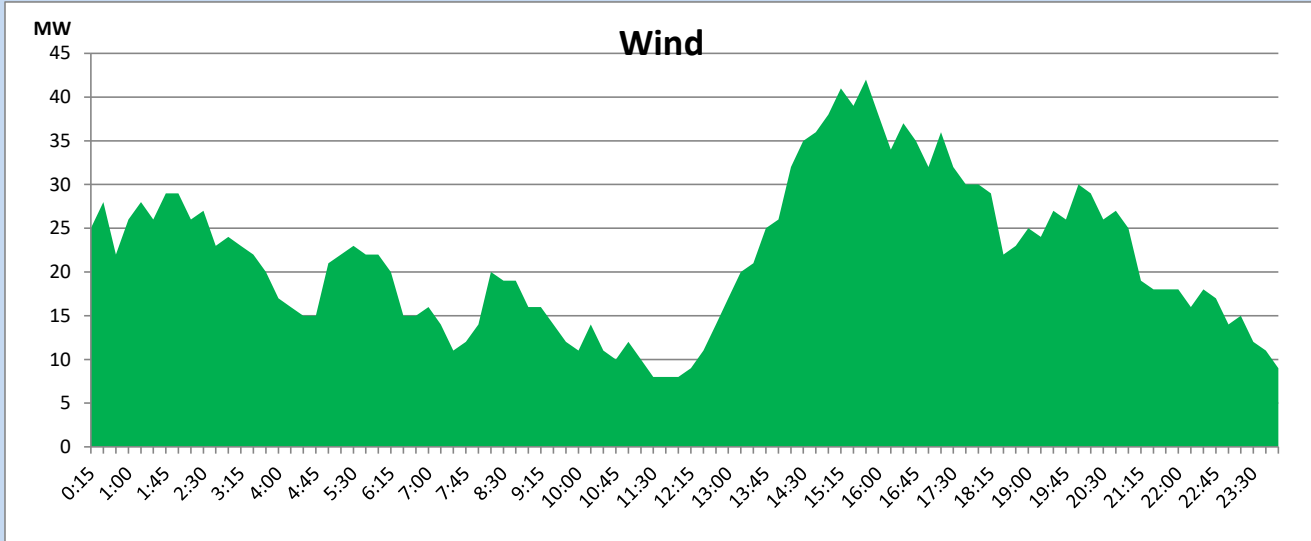
March 14, 2023



Wind Generation during

March 14, 2023

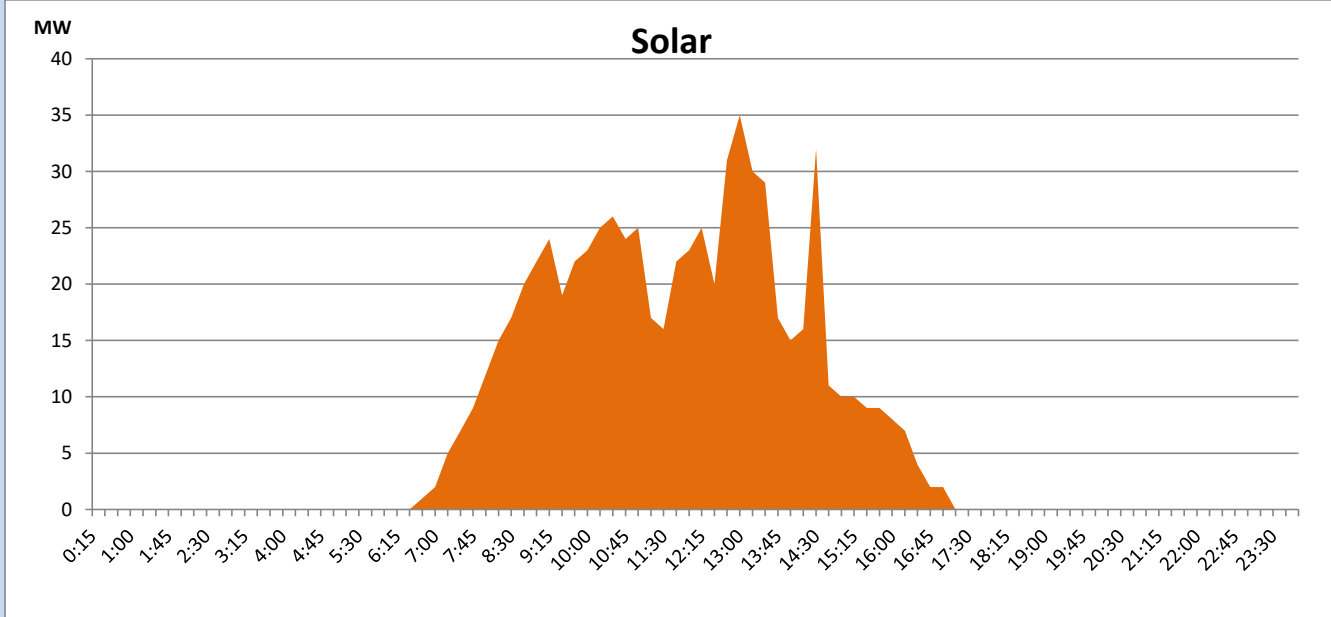
Based on Telemetered Power Stations only



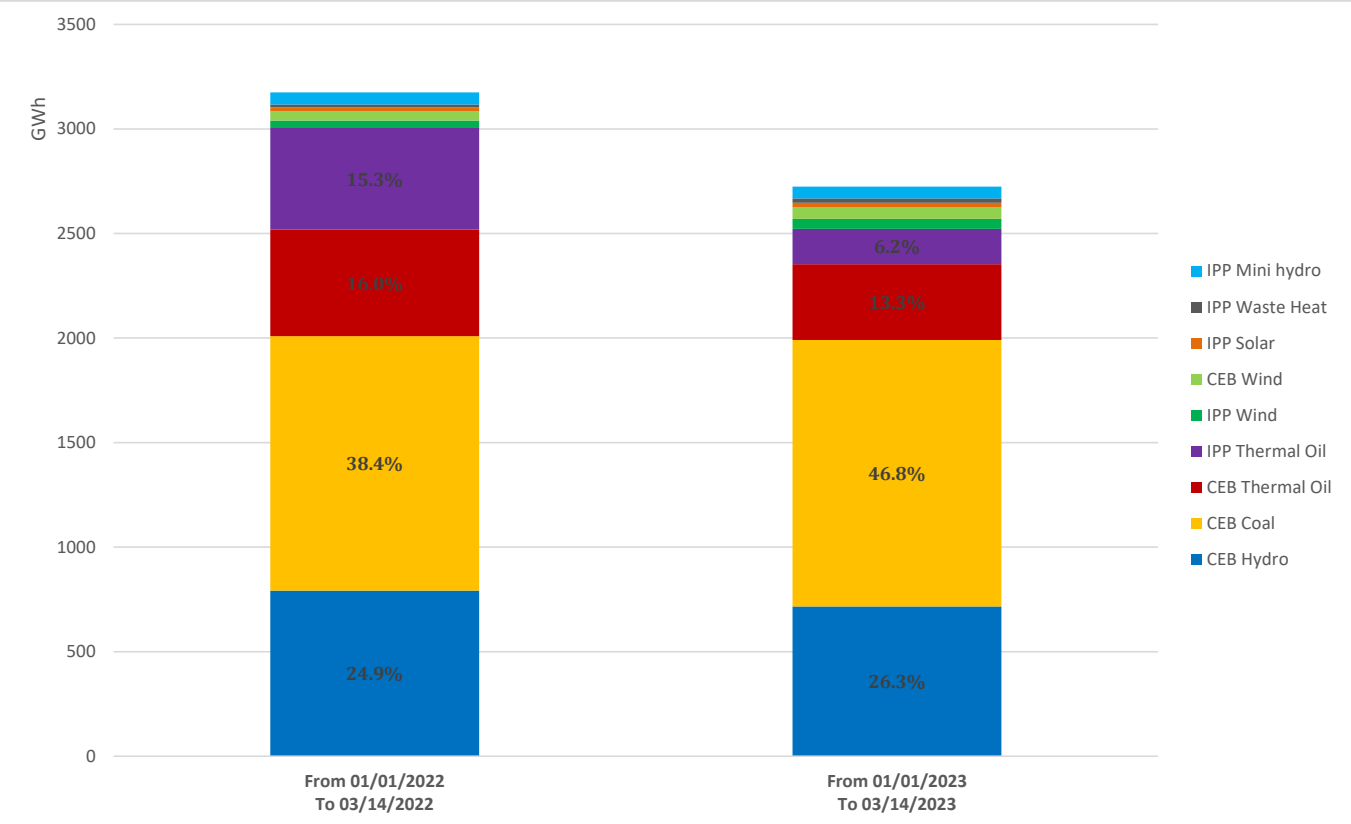
Solar Generation during

March 14, 2023

Based on Telemetered Power Stations only



Cumulative Dispatch Comparison with Last Year



Thermal Plant Fuel types

Power Station	Primary Fuel
CEB Thermal	
Sapugaskanda 1	Heavy Fuel
Sapugaskanda 2	Heavy Fuel
Kelanitissa Small Gas Turbines	Auto Diesel
GT 7 - Kelanitissa	Auto Diesel
Kelanitissa CCY	Naphtha or Diesel
Lakvijaya 1	Coal
Lakvijaya 2	Coal
Lakvijaya 3	Coal
Uthuru Janani	Heavy Fuel
Barge CEB	Heavy Fuel

Power Station	Primary Fuel
Private Thermal	
West Coast	Auto Diesel / Heavy Fuel

Major Incidents reported during the day

March 14, 2023

- 1) Polpitiya unit 2 tripped at 16.52hrs rejecting 30MW from the system due to lower guide bearing oil level low alarm and Polpitiya Unit 2 resumed generation at 18.36hrs. The same unit again tripped at 20.56hrs rejecting 35MW from the system due to the same reason. Polpitiya unit 2 resumed generation at 21.10hrs.
- 2) Uthuru Janani PS made a forced shutdown at 8.30hrs due to unavailability of fuel. Uthuru Janani PS resumed generation at 18.25hrs and reached full load by 18.40hrs.