

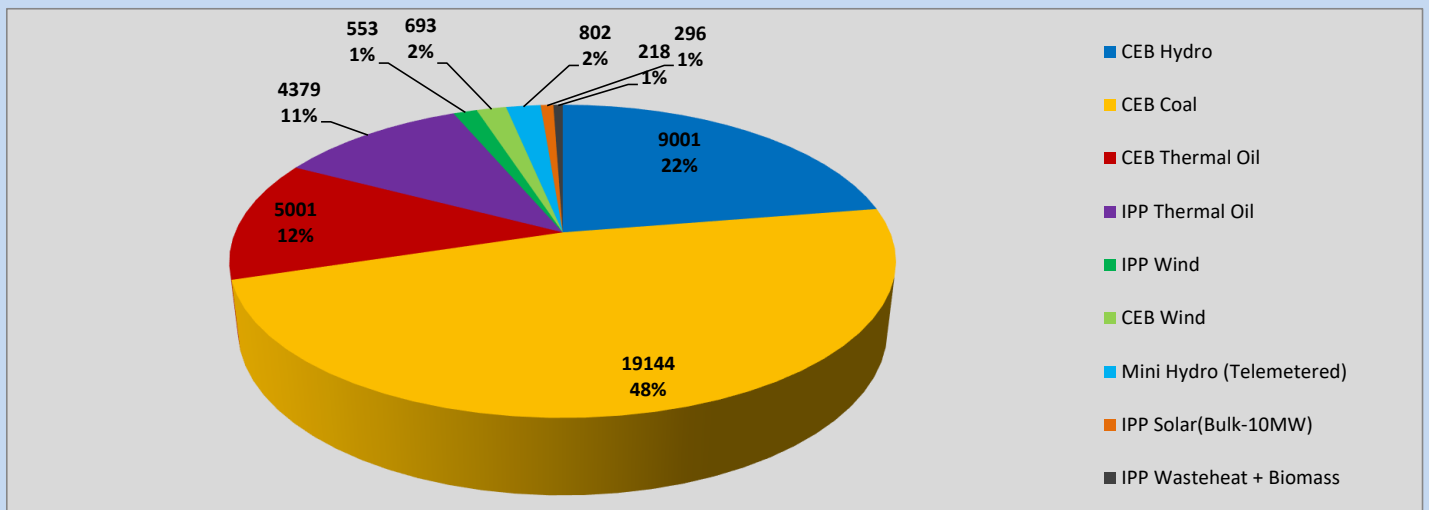
Generation and Reservoirs Statistics

March 13, 2023



PUBLIC UTILITIES COMMISSION OF SRI LANKA

Daily Generation Mix in MWh



Total Generation (Excluding estimated figures) =



40,087 MWh

Estimated figures of CEB generation report

Estimated unserved energy = 0.00 GWh
 Estimated Mini Hydro (Non telemetered) = 508 MWh
 Estimated IPP Solar PV (Bulk 1-10MW) = 304 MWh
 Estimated Solar Roof Top PV = 1490 MWh

Cumulative Dispatch

Following data excludes the contribution from roof top solar, non telemetered solar and mini hydro plants

For Current Month

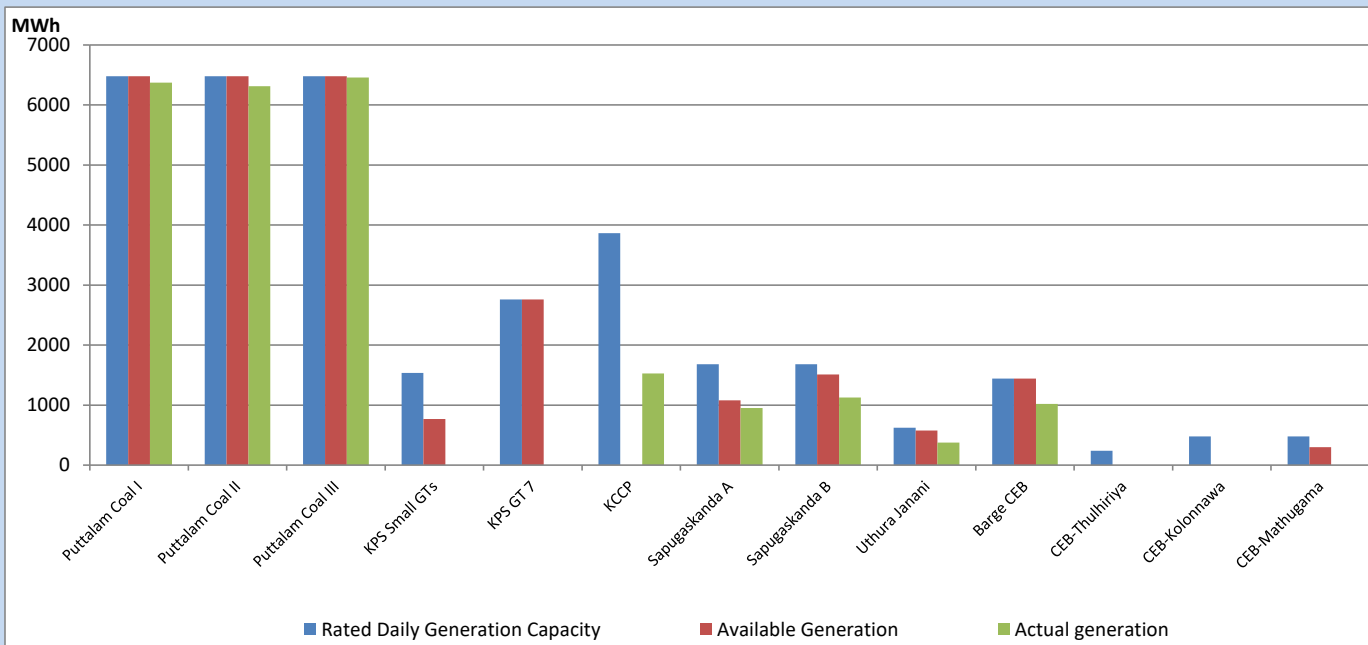
Category	Dispatch (GWh)	Percentage
CEB Hydro	104	20.64%
CEB Coal	251	49.54%
CEB Thermal Oil	82	16.29%
IPP Thermal	32	6.22%
SPP Wind	9	1.79%
CEB Wind	11	2.27%
Mini Hydro (Telemetered)	10	1.88%
IPP Solar (Bulk-10MW)	3	0.67%
IPP Wasteheat + BMP	4	0.71%
Total	506	

For Current Year

Category	Dispatch (GWh)	Percentage
CEB Hydro	706	26.32%
CEB Coal	1,255	46.79%
CEB Thermal Oil	360	13.40%
IPP Thermal	163	6.06%
SPP Wind	47	1.76%
CEB Wind	56	2.08%
Mini Hydro (Telemetered)	56	2.07%
IPP Solar (Bulk-10MW)	20	0.74%
IPP Wasteheat	21	0.77%
Total	2,682	

CEB owned Thermal Plant Dispatch

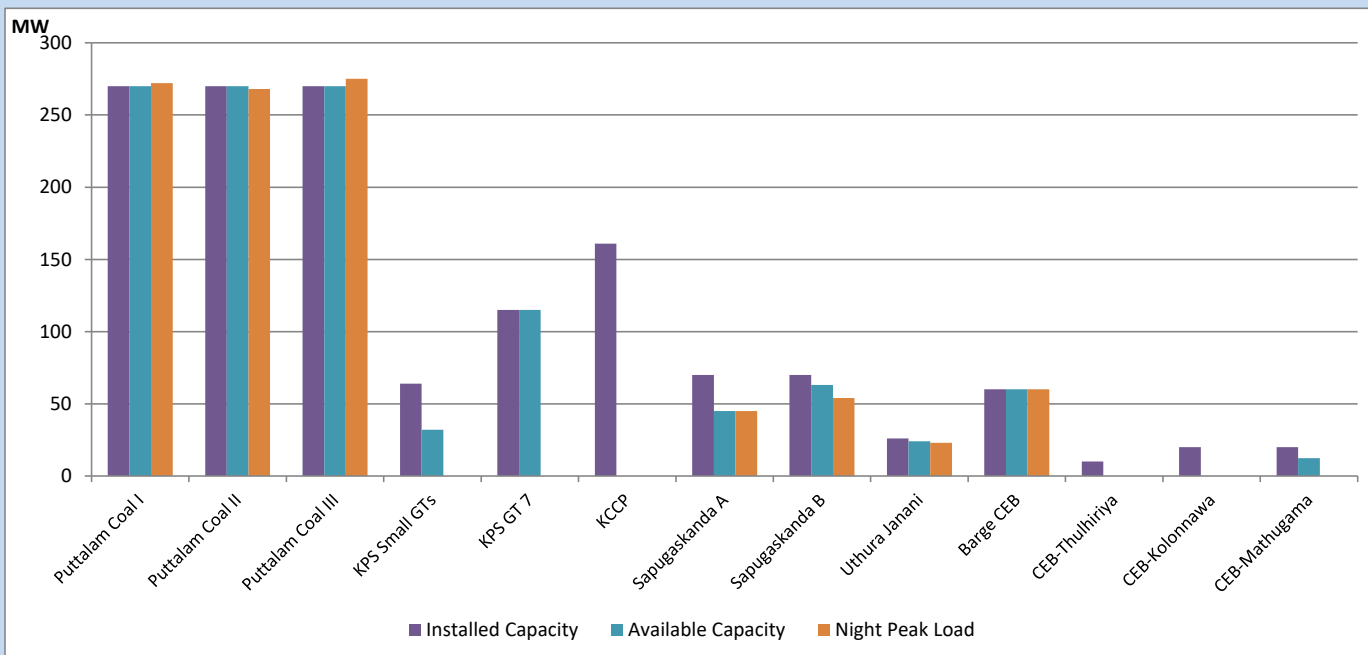
March 13, 2023



Available Generation is estimated based on plant availability at 6.00am on

March 14, 2023

CEB owned Thermal Plant Loading at the Night Peak



Note- Plant availability is recorded at 6.00 am on

March 14, 2023

IPP owned Thermal Plant Dispatch

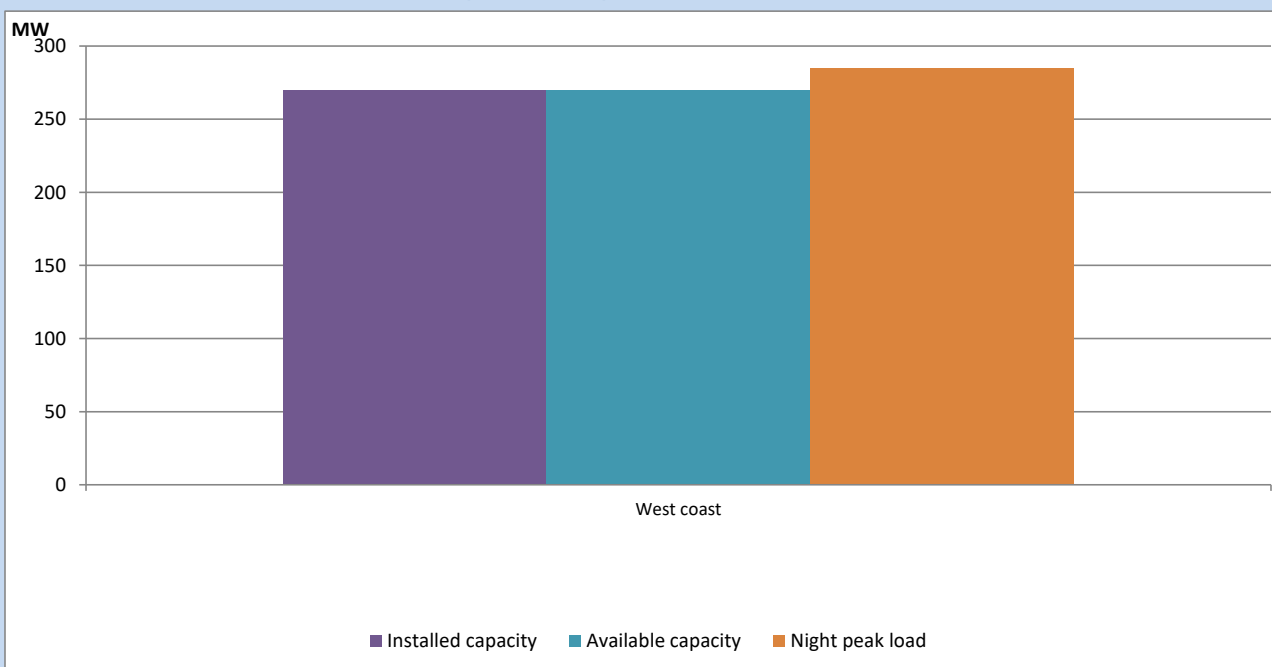
March 13, 2023



Available Generation is estimated based on plant availability at 6.00am on

March 14, 2023

IPP owned Thermal Plant Loading at the Night Peak

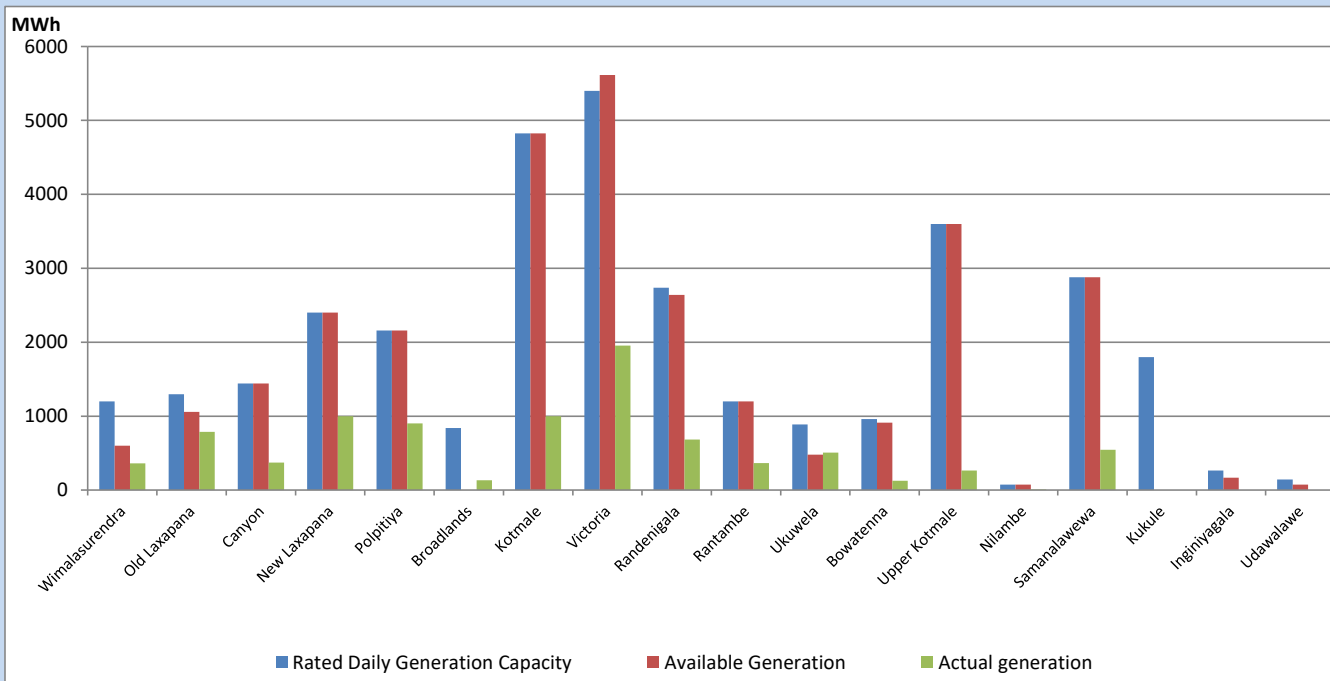


Note- Plant availability is recorded at 6.00 am on

March 14, 2023

Major Hydro Plant Dispatch

March 13, 2023

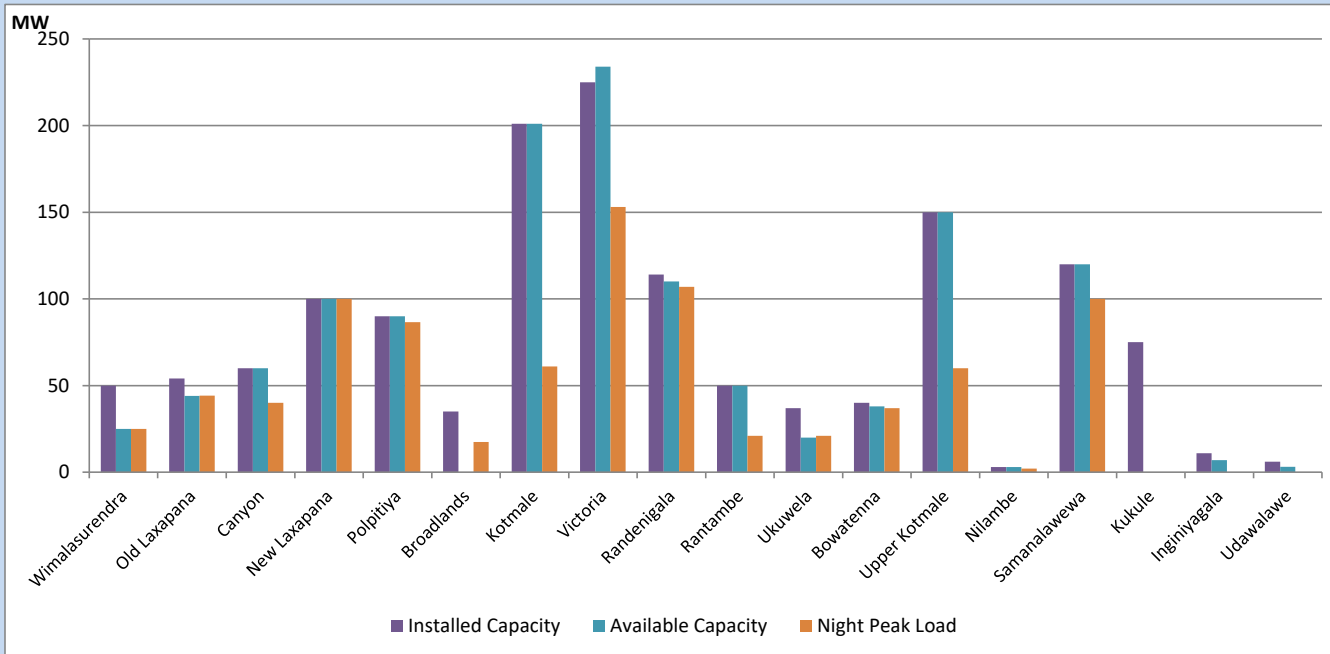


Available Generation is estimated based on plant availability at 6.00am on
Broadlands power plant is operating in the Commissioning Stage

March 14, 2023

Major Hydro Plant Loading at Night Peak

March 13, 2023



Note- Plant availability is recorded at 6.00 am on
Broadlands power plant is operating in the Commissioning Stage

March 14, 2023

Summary of Major Plant performance

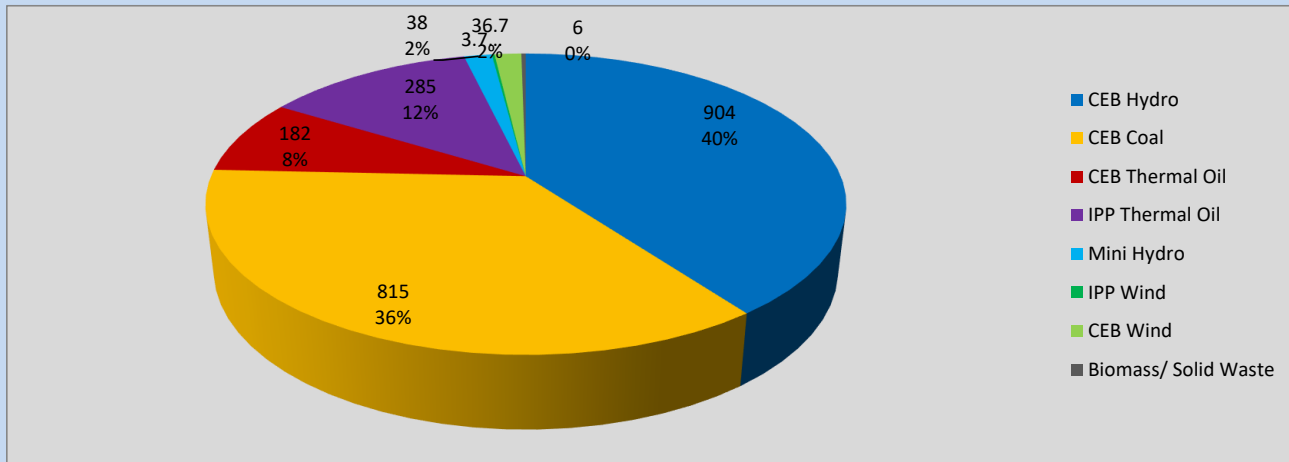
Plant	Installed Capacity	Plant Availability	Night peak Load	Plant Dispatch
	(MW)	(MW)	(MW)	(MWh)
Wimalasurendra	50	25	25	361
Old Laxapana	54	44	44	787
Canyon	60	60	40	373
New Laxapana	100	100	100	1,000
Polpitiya	90	90	87	900
Broadlands	35	0	18	131
Kotmale	201	201	61	1,000
Victoria	225	234	153	1,954
Randenigala	114	110	107	684
Rantambe	50	50	21	365
Ukuwela	37	20	21	505
Bowatenna	40	38	37	126
Upper Kotmale	150	150	60	265
Nilambe	3	3	2	7
Samanalawewa	120	120	100	543
Kukule	75	0	0	0
Inginiyagala	11	7	0	0
Udawalawe	6	3	0	0
Puttalam Coal I	270	270	272	6,373
Puttalam Coal II	270	270	268	6,313
Puttalam Coal III	270	270	275	6,458
KPS Small GTs	64	32	0	0
KPS GT 7	115	115	0	0
KCCP	161	0	0	1,528
Sapugaskanda A	70	45	45	950
Sapugaskanda B	70	63	54	1,128
Uthura Janani	26	24	23	377
Barge CEB	60	60	60	1,018
CEB-Thulhiriya	10	0	0	0
CEB-Kolonnawa	20	0	0	0
CEB-Mathugama	20	12	0	0
ACE Matara	24	0	0	0
Asia Power	50	0	0	0
Sojitz Kelanitissa	163	0	0	0
West Coast	270	270	285	4,379
Nothern Power	36	0	0	0
ACE Embilipitiya	93	0	0	0
Total	3,483	2,687	2,242	40,087

Plant availability is the availability recorded at 6 am on

March 14, 2023

Contribution to the Night Peak in MW

March 13, 2023

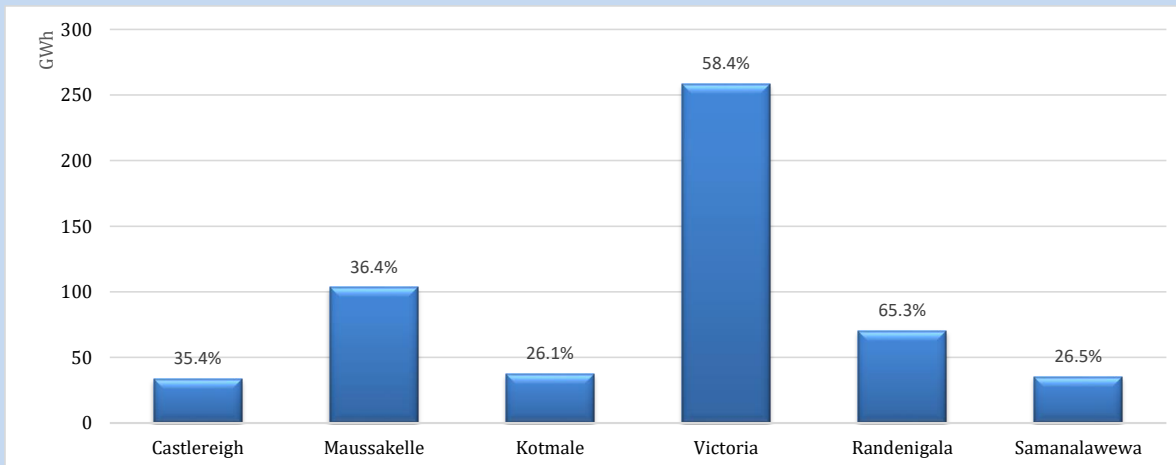


Night Peak*	2,271 MW
Day Peak	1,960 MW
Minimum Demand	1,103 MW

Above figures are excluding contribution from roof top solar, non telemetered solar and mini hydro plants

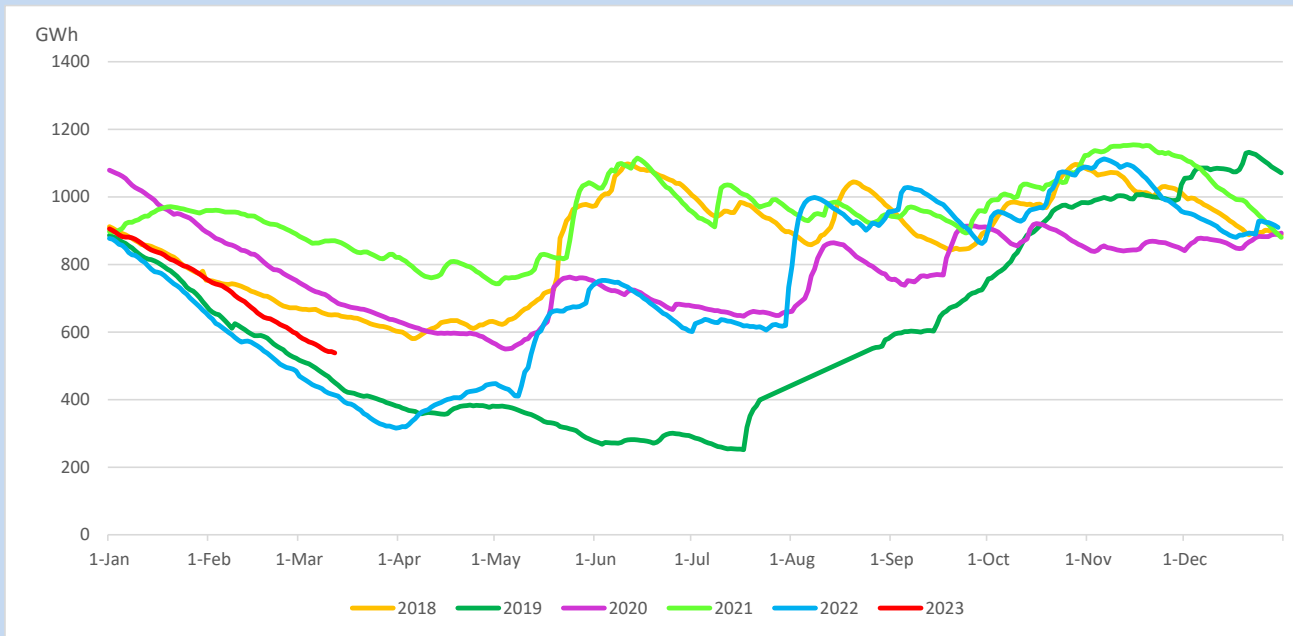
Reservoir Levels -

as at 06.00 Hr on March 14, 2023

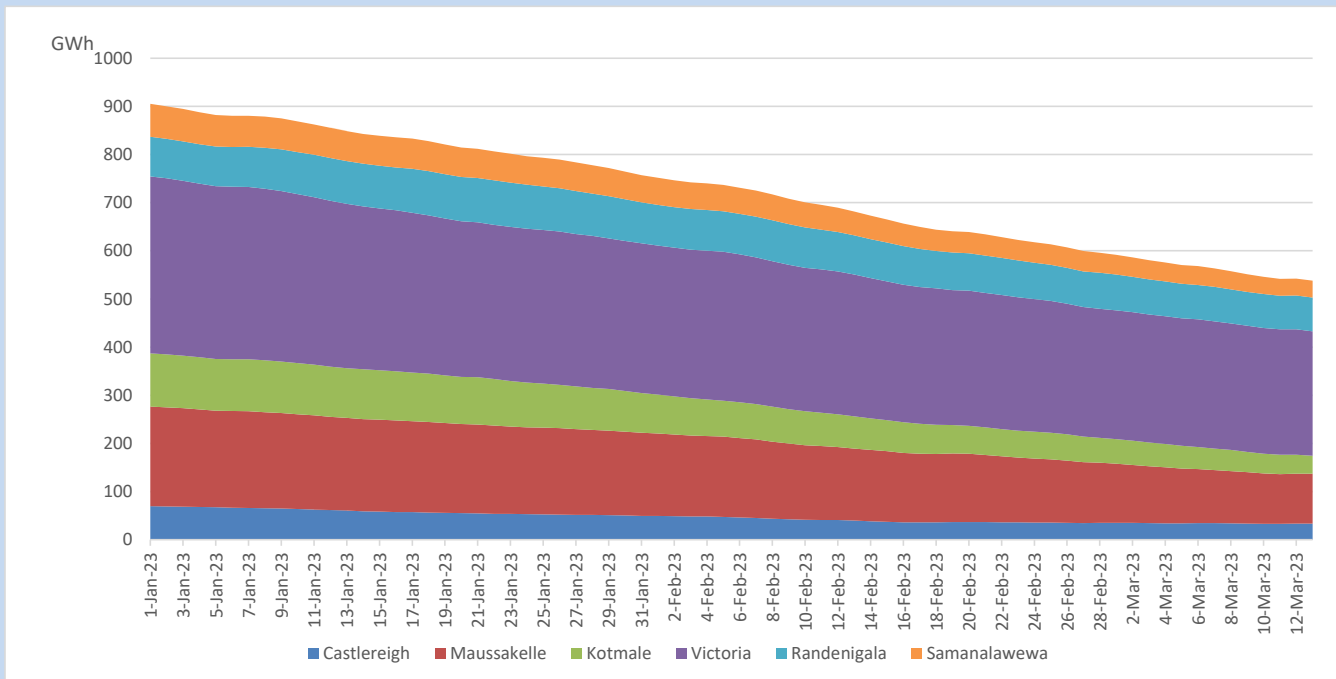


Total Reservoir Level	538.2 GWh
% of Total capacity	44.7%

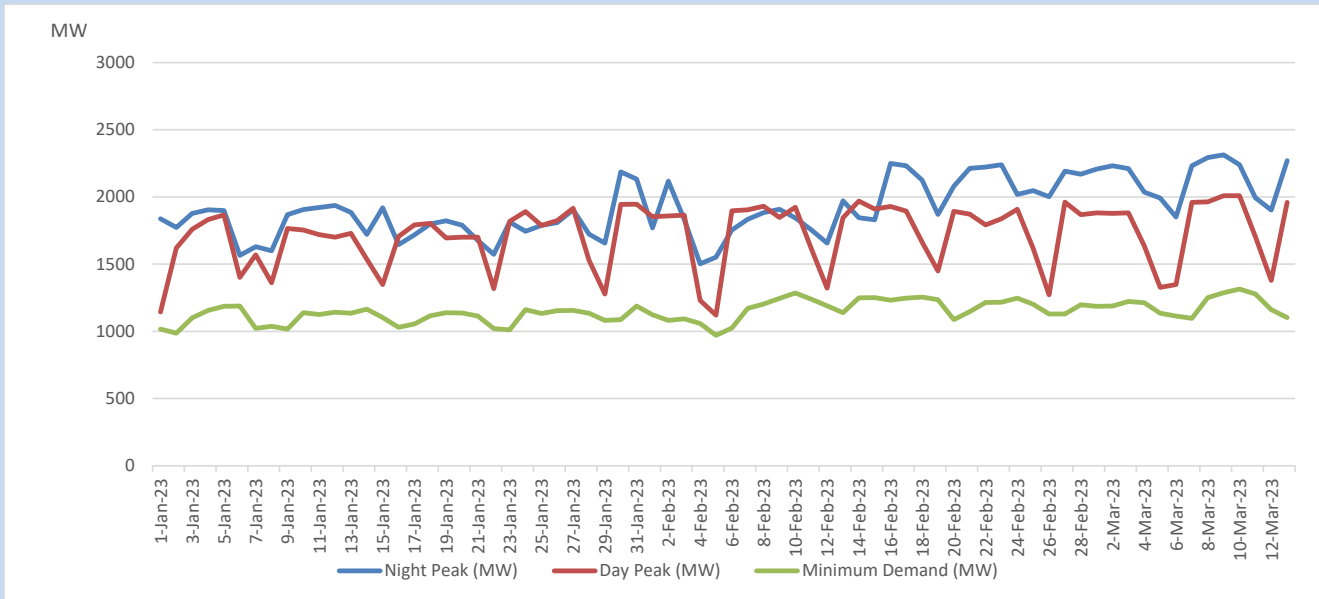
Comparison of Total Reservoir Storage Levels with Past Years



Variation of Major Hydro Reservoir Levels in the current year (GWh)



Variation of Demand during the current year

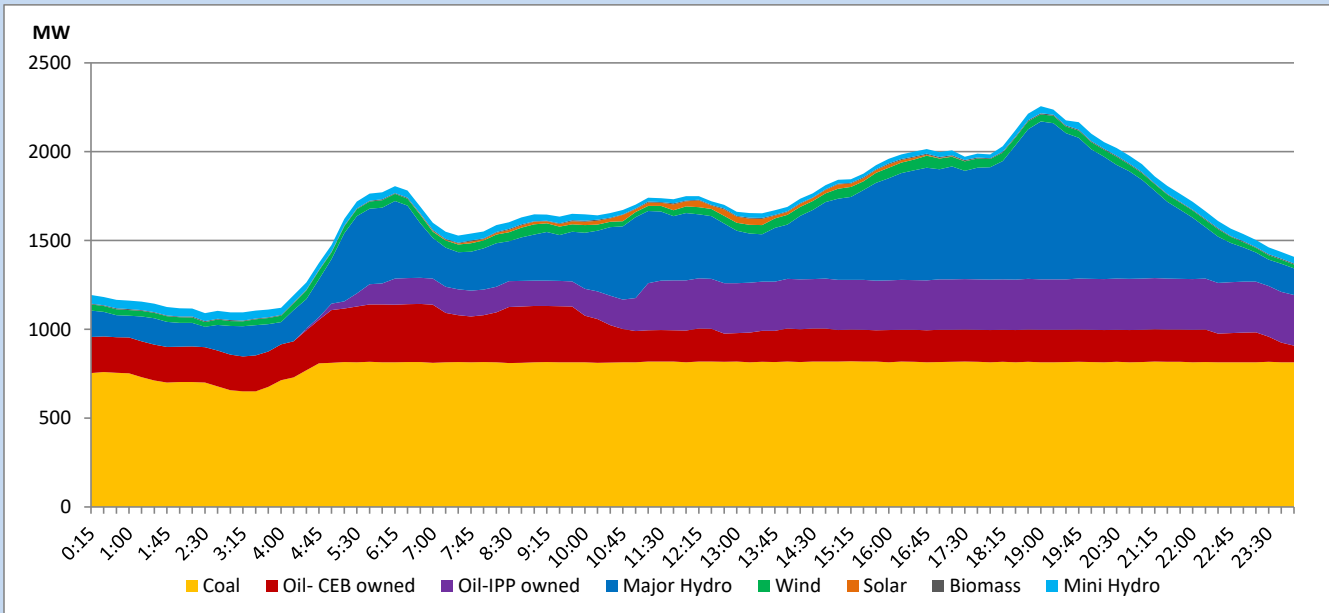


The above figures are excluding contribution from roof top solar, non telemetered solar and mini hydro plants

Daily Load Curve

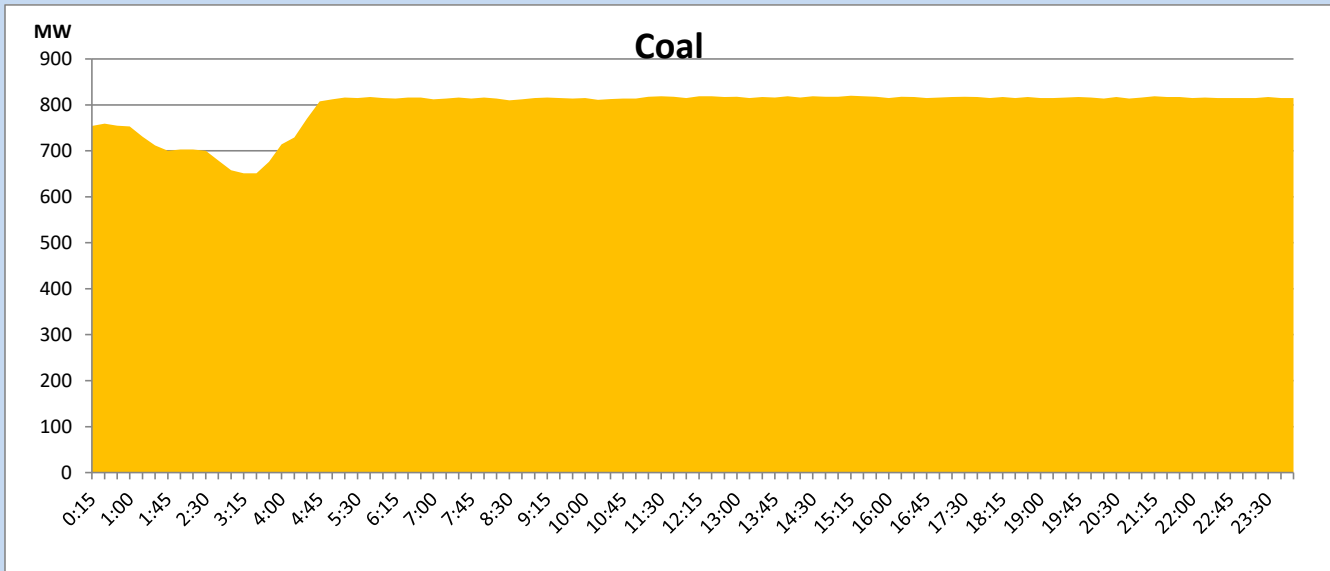
March 13, 2023

Solar and wind data is based on Telemetered Power Stations only



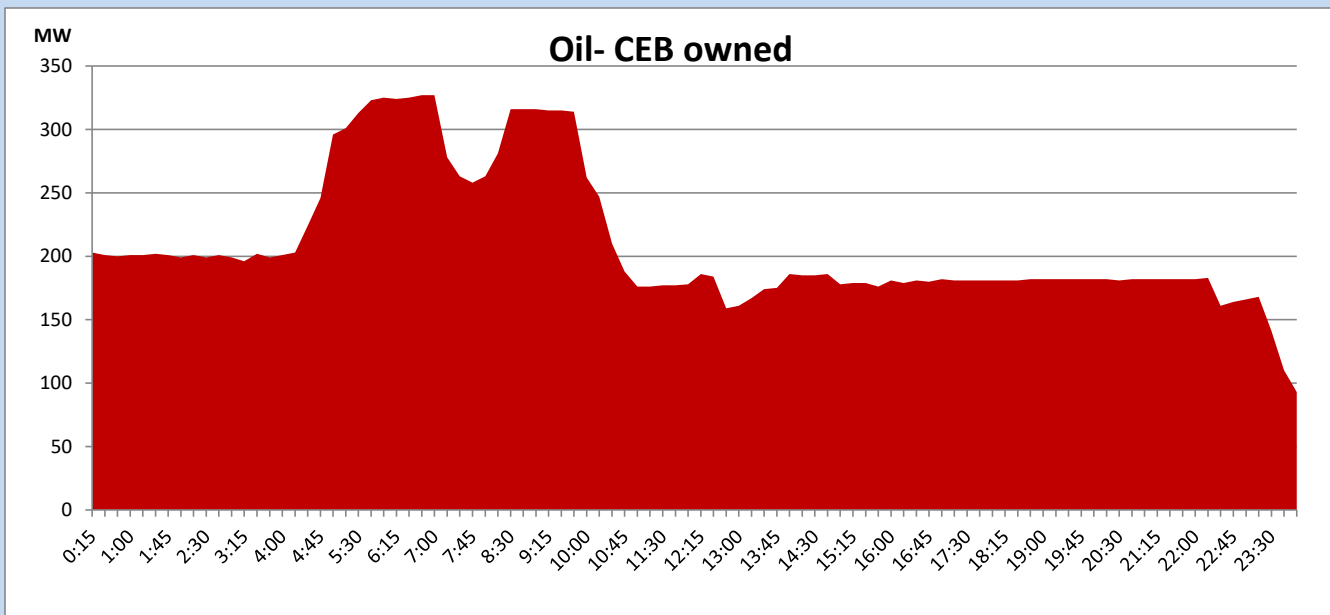
Coal Generation during

March 13, 2023



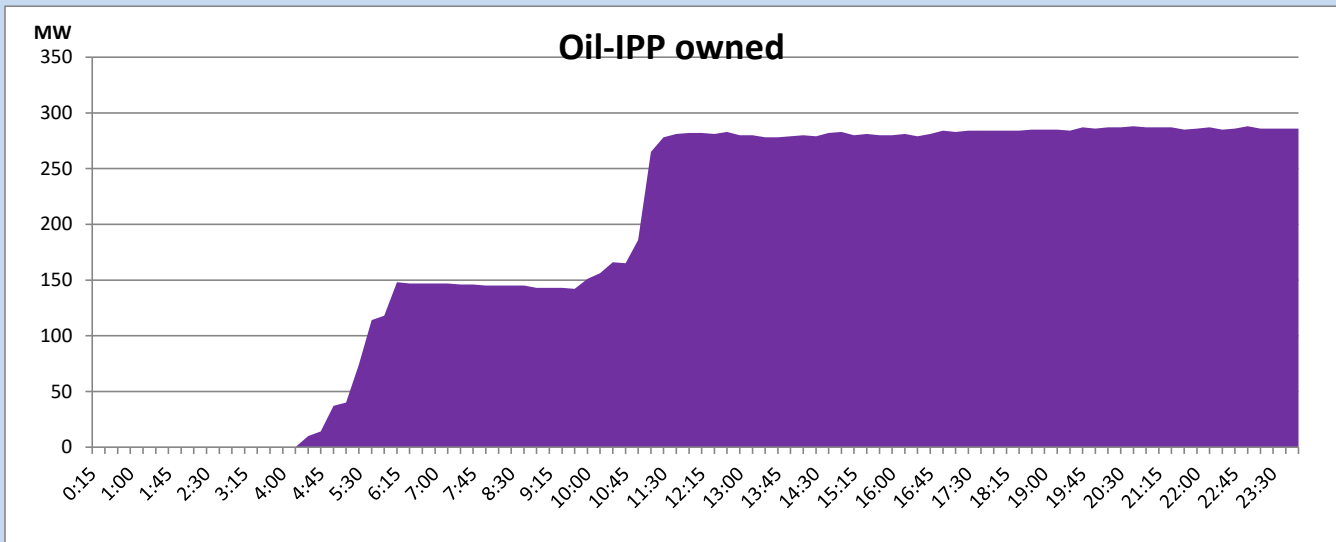
CEB Oil Plant Generation during

March 13, 2023



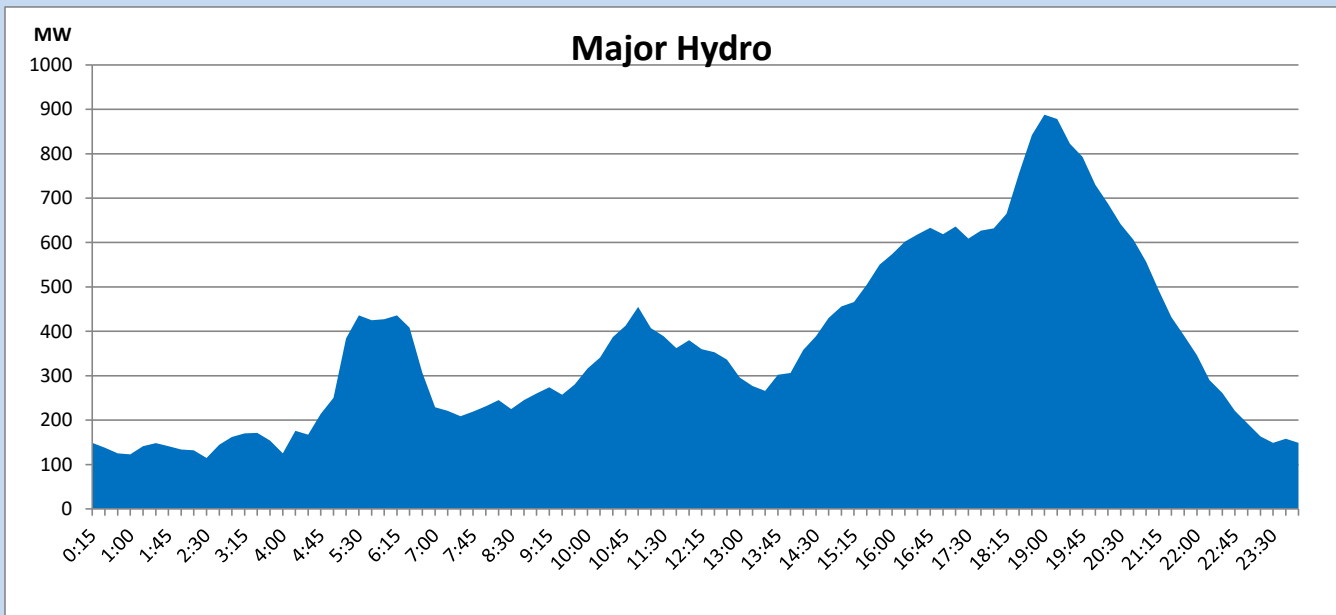
IPP Oil Plant Generation during

March 13, 2023



Major Hydro Generation during

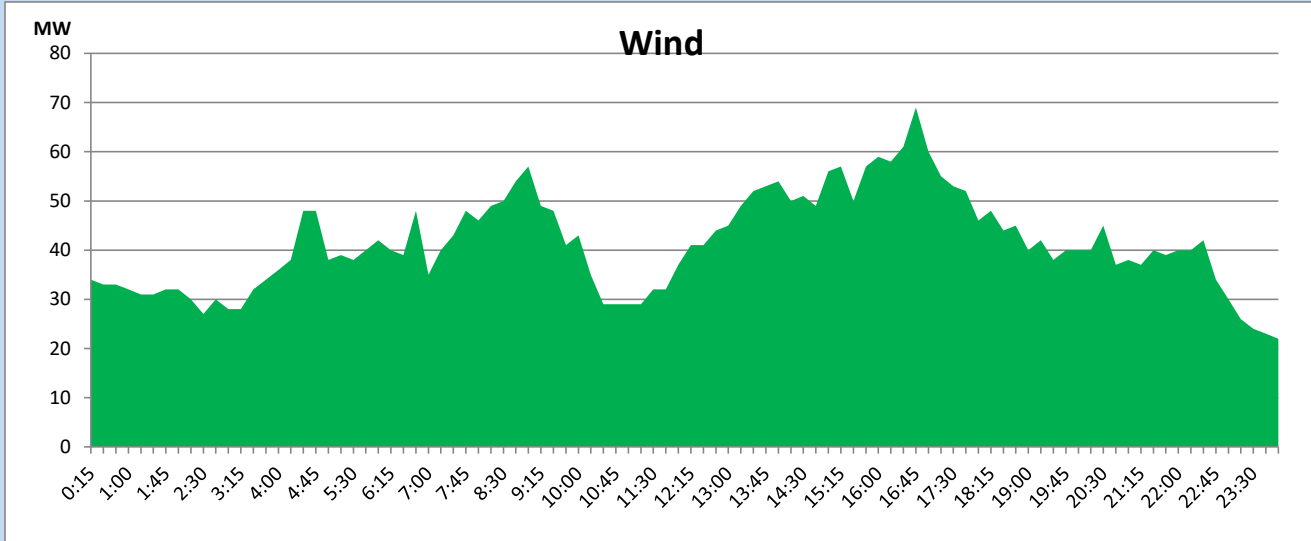
March 13, 2023



Wind Generation during

March 13, 2023

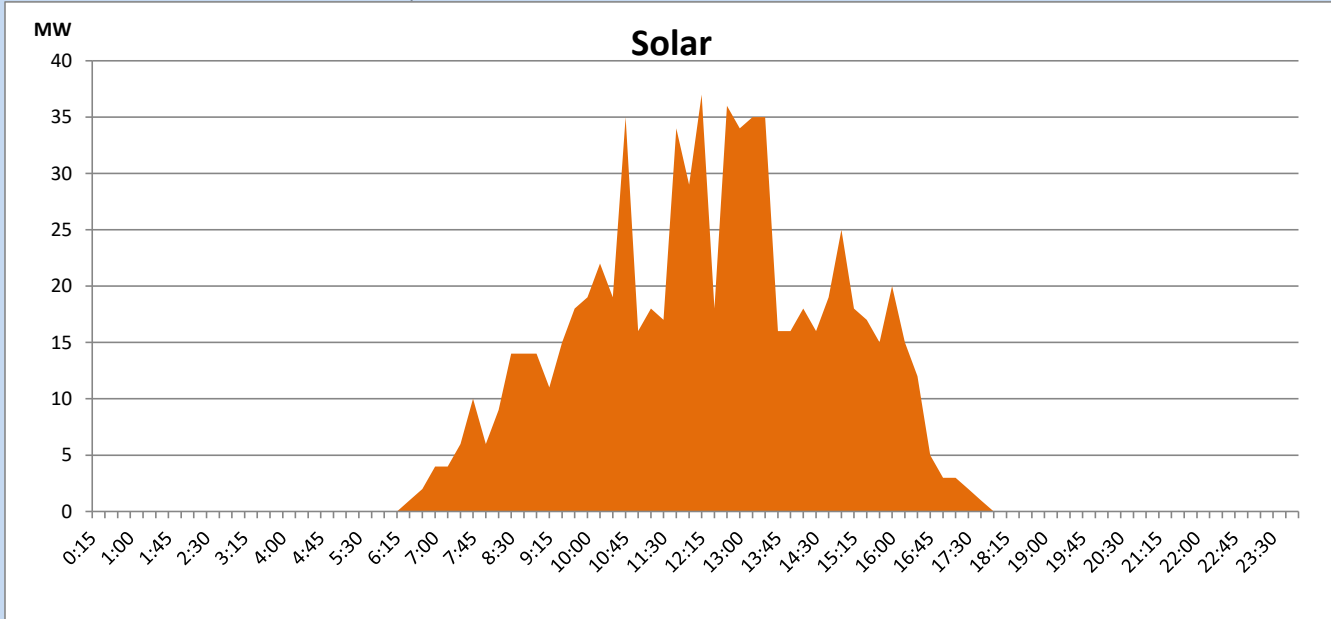
Based on Telemetered Power Stations only



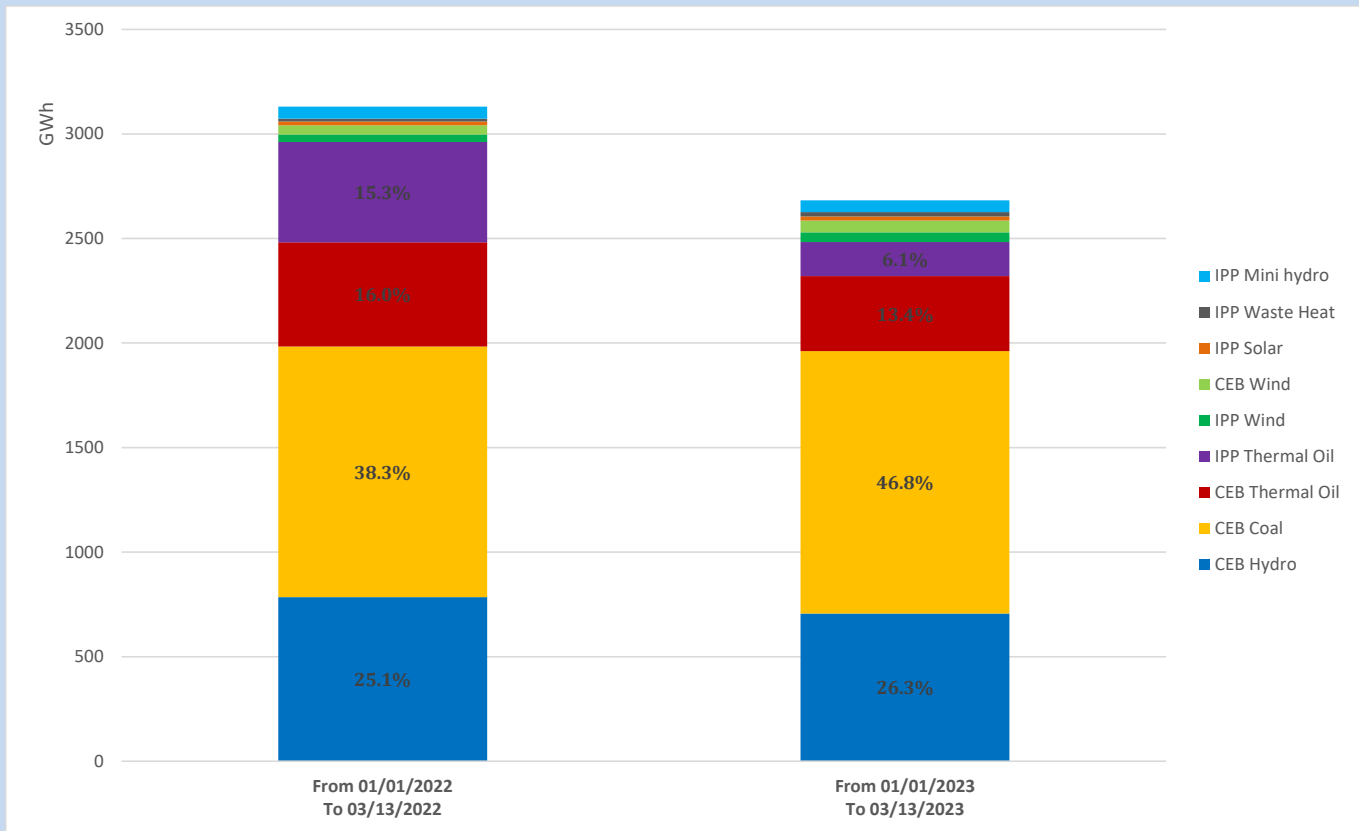
Solar Generation during

March 13, 2023

Based on Telemetered Power Stations only



Cumulative Dispatch Comparison with Last Year



Thermal Plant Fuel types

Power Station	Primary Fuel
CEB Thermal	
Sapugaskanda 1	Heavy Fuel
Sapugaskanda 2	Heavy Fuel
Kelanitissa Small Gas Turbines	Auto Diesel
GT 7 - Kelanitissa	Auto Diesel
Kelanitissa CCY	Naphtha or Diesel
Lakvijaya 1	Coal
Lakvijaya 2	Coal
Lakvijaya 3	Coal
Uthuru Janani	Heavy Fuel
Barge CEB	Heavy Fuel

Power Station	Primary Fuel
Private Thermal	
West Coast	Auto Diesel / Heavy Fuel

Major Incidents reported during the day

March 13, 2023

1) Polpitiya unit 2 which tripped at 06:06hrs resumed generation at 07:09. The same unit again tripped at 17:51hrs rejecting 35MW from the system due to lower guide bearing oil level low alarm. Polpitiya unit 2 resumed generation at 18:14hrs.

2) Kotugota – Kerawalapitiya 220kV cct 02 which tripped on 11/03/2023 was restored at 14:23hrs

