

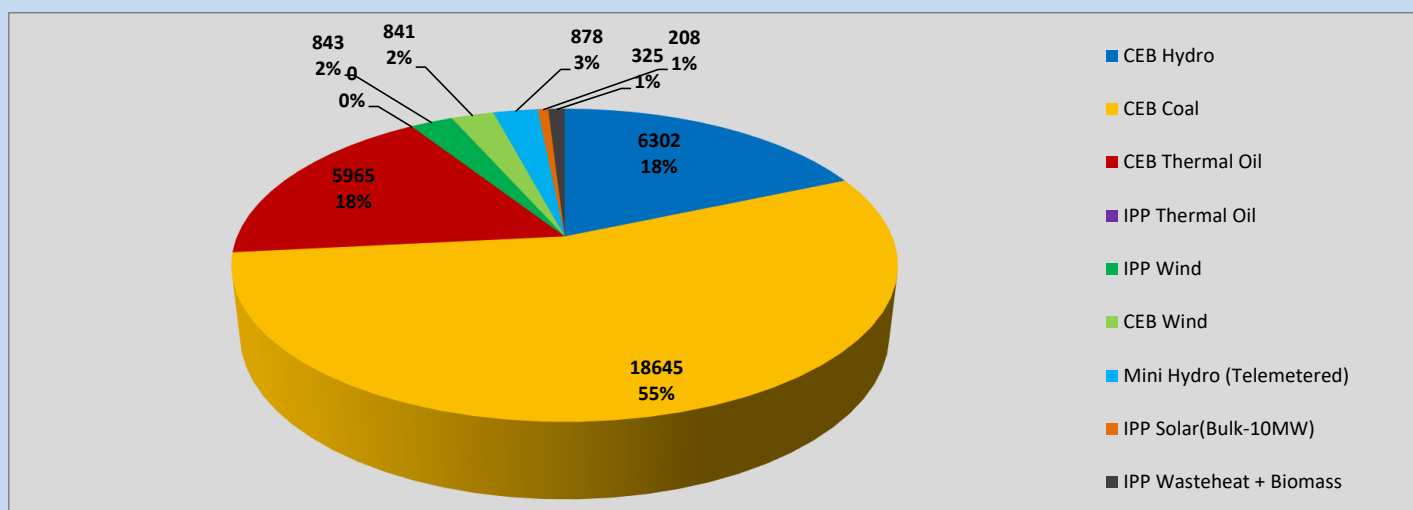
Generation and Reservoirs Statistics

March 12, 2023



PUBLIC UTILITIES COMMISSION OF SRI LANKA

Daily Generation Mix in MWh



Total Generation (Excluding estimated figures) =

34,007 MWh

Estimated figures of CEB generation report

Estimated unserved energy = 0.00 GWh

Estimated Mini Hydro (Non telemetered) = 432 MWh

Estimated IPP Solar PV (Bulk 1-10MW) = 304 MWh

Estimated Solar Roof Top PV = 1490 MWh

Cumulative Dispatch

Following data excludes the contribution from roof top solar, non telemetered solar and mini hydro plants

For Current Month

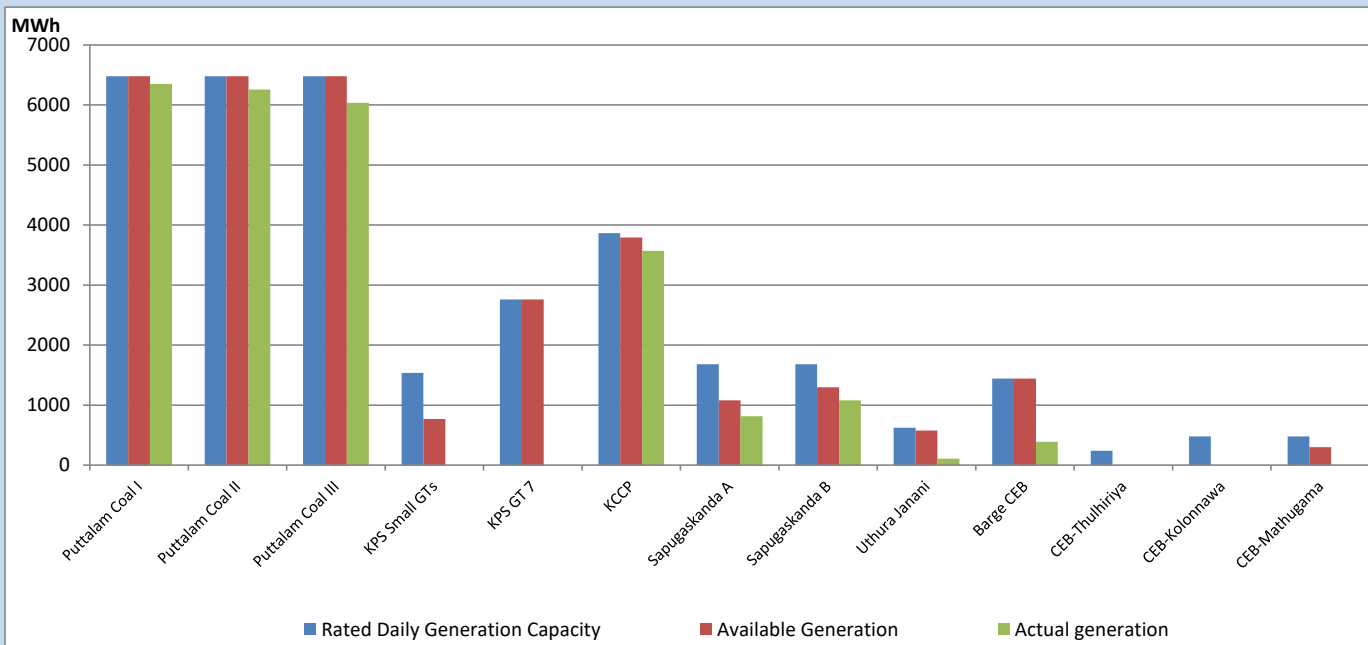
Category	Dispatch (GWh)	Percentage
CEB Hydro	95	20.48%
CEB Coal	232	49.70%
CEB Thermal Oil	77	16.61%
IPP Thermal	27	5.82%
SPP Wind	8	1.82%
CEB Wind	11	2.32%
Mini Hydro (Telemetered)	9	1.87%
IPP Solar (Bulk-10MW)	3	0.66%
IPP Wasteheat + BMP	3	0.72%
Total	466	

For Current Year

Category	Dispatch (GWh)	Percentage
CEB Hydro	697	26.37%
CEB Coal	1,236	46.78%
CEB Thermal Oil	355	13.42%
IPP Thermal	158	5.99%
SPP Wind	47	1.76%
CEB Wind	55	2.09%
Mini Hydro (Telemetered)	55	2.07%
IPP Solar (Bulk-10MW)	20	0.74%
IPP Wasteheat	20	0.77%
Total	2,642	

CEB owned Thermal Plant Dispatch

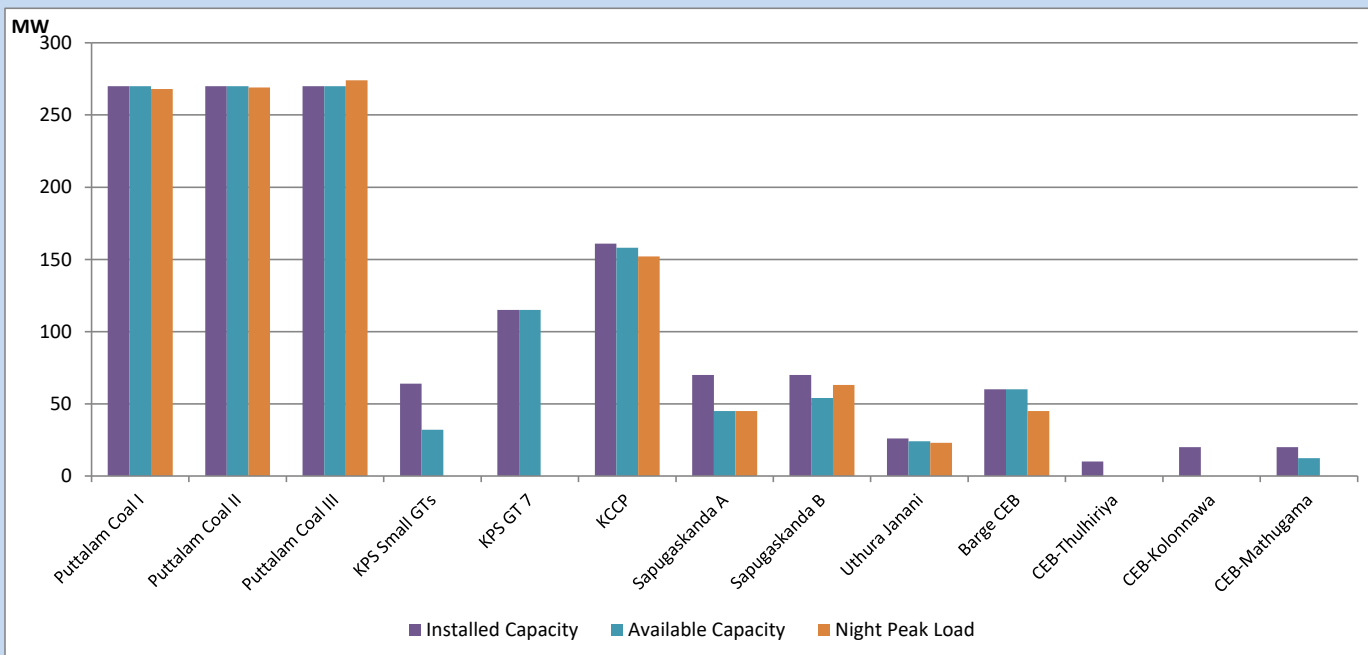
March 12, 2023



Available Generation is estimated based on plant availability at 6.00am on

March 13, 2023

CEB owned Thermal Plant Loading at the Night Peak

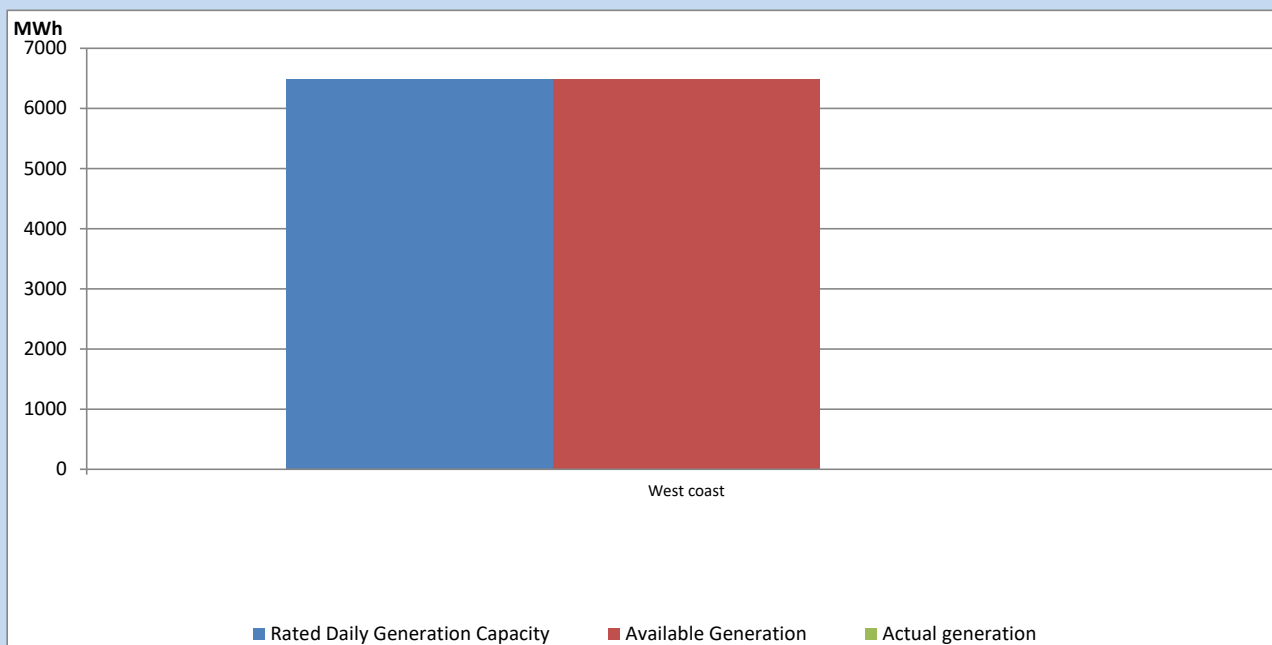


Note- Plant availability is recorded at 6.00 am on

March 13, 2023

IPP owned Thermal Plant Dispatch

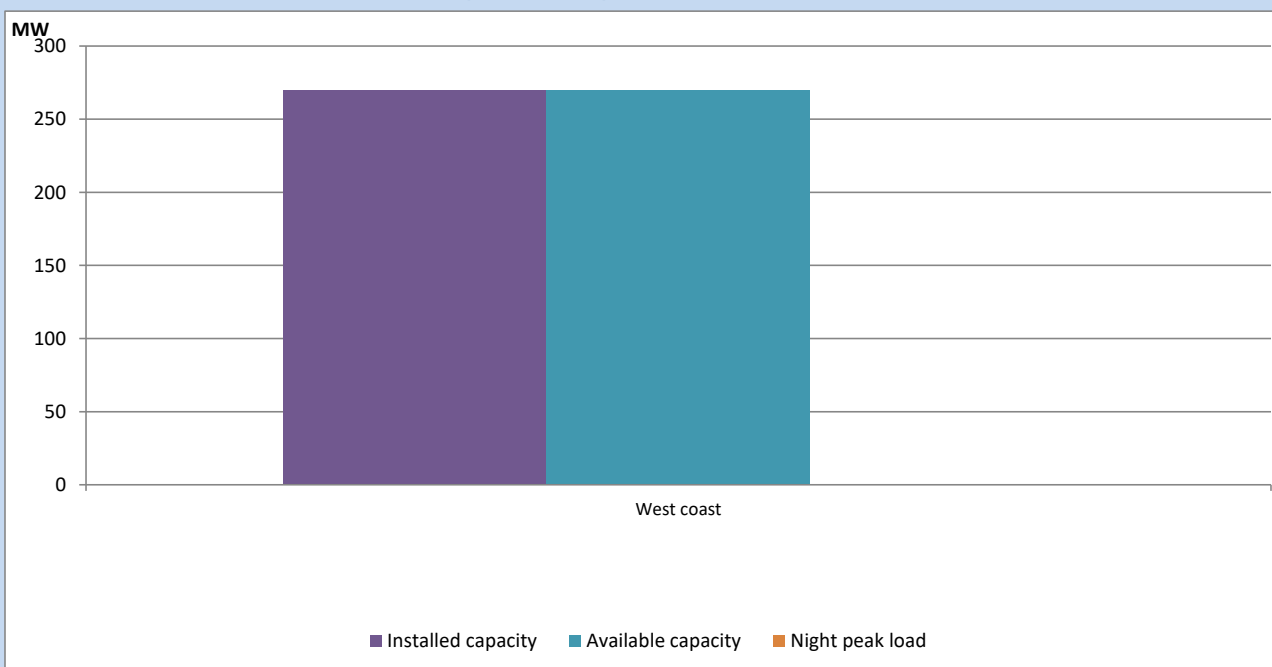
March 12, 2023



Available Generation is estimated based on plant availability at 6.00am on

March 13, 2023

IPP owned Thermal Plant Loading at the Night Peak

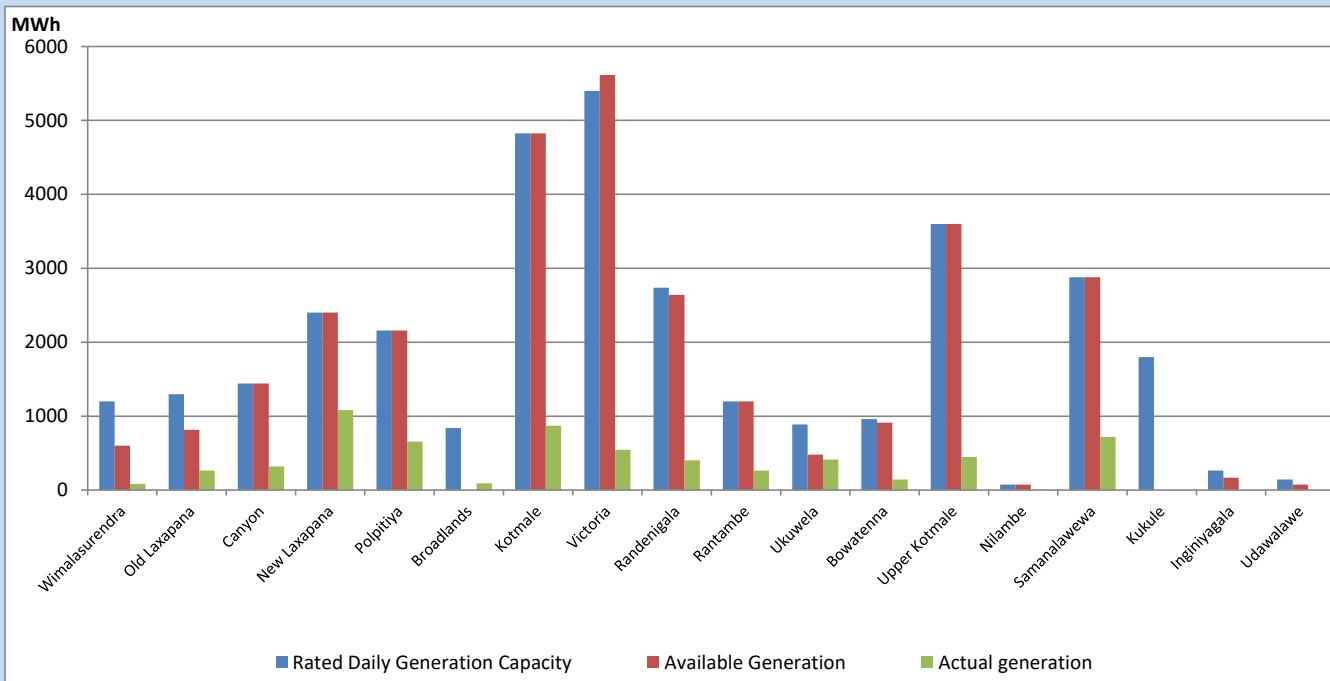


Note- Plant availability is recorded at 6.00 am on

March 13, 2023

Major Hydro Plant Dispatch

March 12, 2023

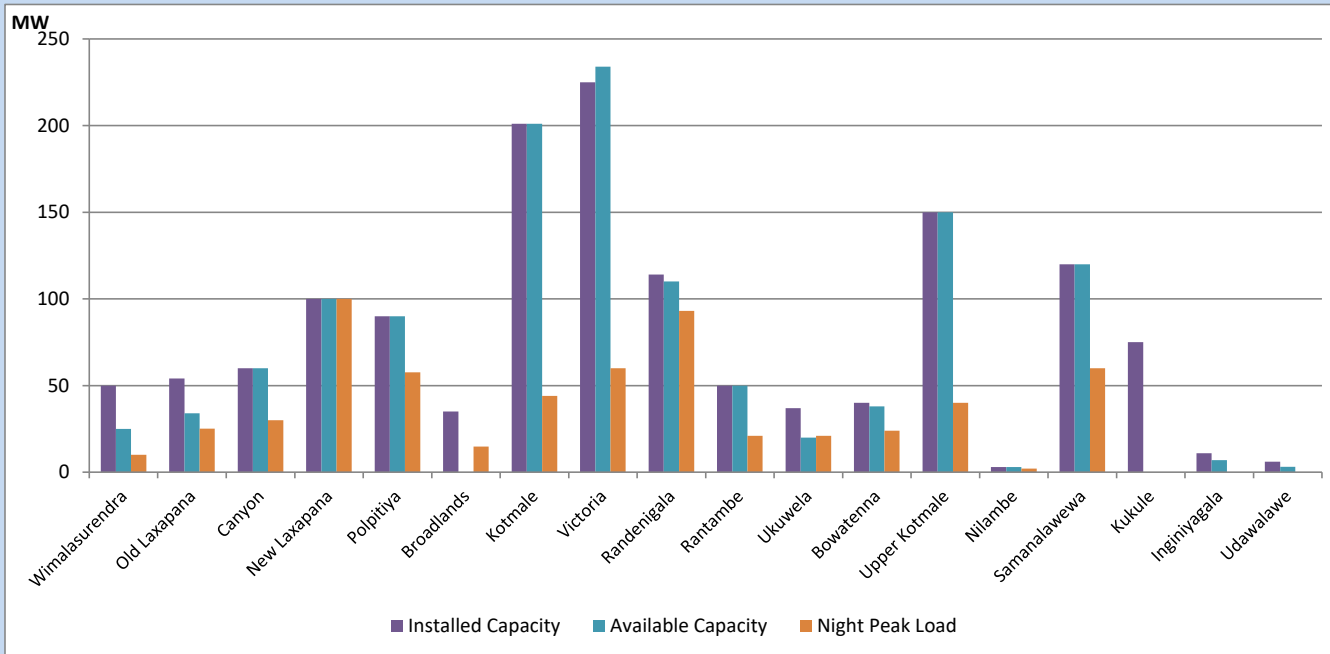


Available Generation is estimated based on plant availability at 6.00am on
Broadlands power plant is operating in the Commissioning Stage

March 13, 2023

Major Hydro Plant Loading at Night Peak

March 12, 2023



Note- Plant availability is recorded at 6.00 am on
Broadlands power plant is operating in the Commissioning Stage

March 13, 2023

Summary of Major Plant performance

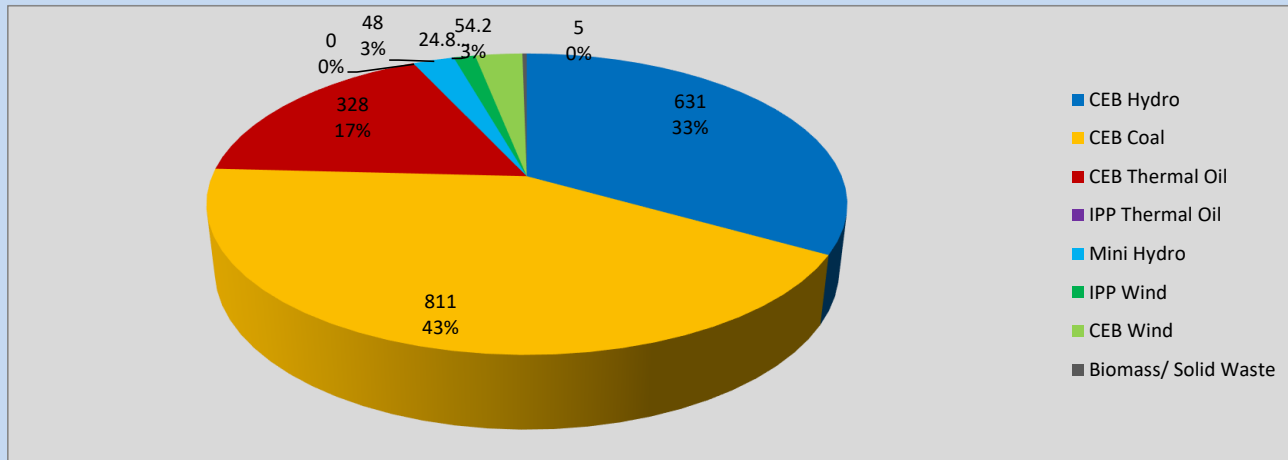
Plant	Installed Capacity	Plant Availability	Night peak Load	Plant Dispatch
	(MW)	(MW)	(MW)	(MWh)
Wimalasurendra	50	25	10	83
Old Laxapana	54	34	25	265
Canyon	60	60	30	319
New Laxapana	100	100	100	1,081
Polpitiya	90	90	58	657
Broadlands	35	0	15	90
Kotmale	201	201	44	870
Victoria	225	234	60	546
Randenigala	114	110	93	403
Rantambe	50	50	21	264
Ukuwela	37	20	21	413
Bowatenna	40	38	24	142
Upper Kotmale	150	150	40	447
Nilambe	3	3	2	5
Samanalawewa	120	120	60	717
Kukule	75	0	0	0
Inginiyagala	11	7	0	0
Udawalawe	6	3	0	0
Puttalam Coal I	270	270	268	6,352
Puttalam Coal II	270	270	269	6,258
Puttalam Coal III	270	270	274	6,035
KPS Small GTs	64	32	0	0
KPS GT 7	115	115	0	0
KCCP	161	158	152	3,572
Sapugaskanda A	70	45	45	817
Sapugaskanda B	70	54	63	1,079
Uthura Janani	26	24	23	108
Barge CEB	60	60	45	389
CEB-Thulhiriya	10	0	0	0
CEB-Kolonnawa	20	0	0	0
CEB-Mathugama	20	12	0	0
ACE Matara	24	0	0	0
Asia Power	50	0	0	0
Sojitz Kelanitissa	163	0	0	0
West Coast	270	270	0	0
Nothern Power	36	0	0	0
ACE Embilipitiya	93	0	0	0
Total	3,483	2,826	1,873	34,007

Plant availability is the availability recorded at 6 am on

March 13, 2023

Contribution to the Night Peak in MW

March 12, 2023

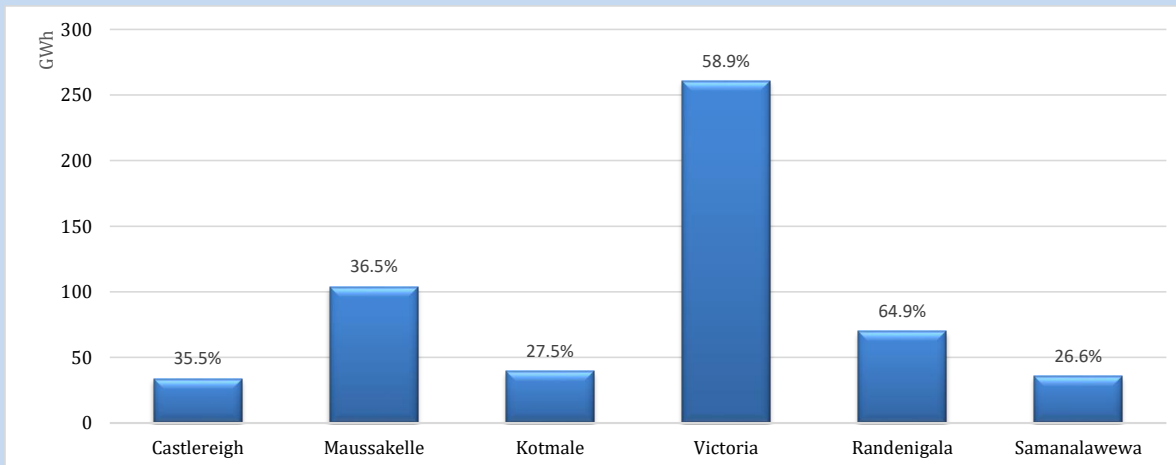


Night Peak*	1,902 MW
Day Peak	1,379 MW
Minimum Demand	1,162 MW

Above figures are excluding contribution from roof top solar, non telemetered solar and mini hydro plants

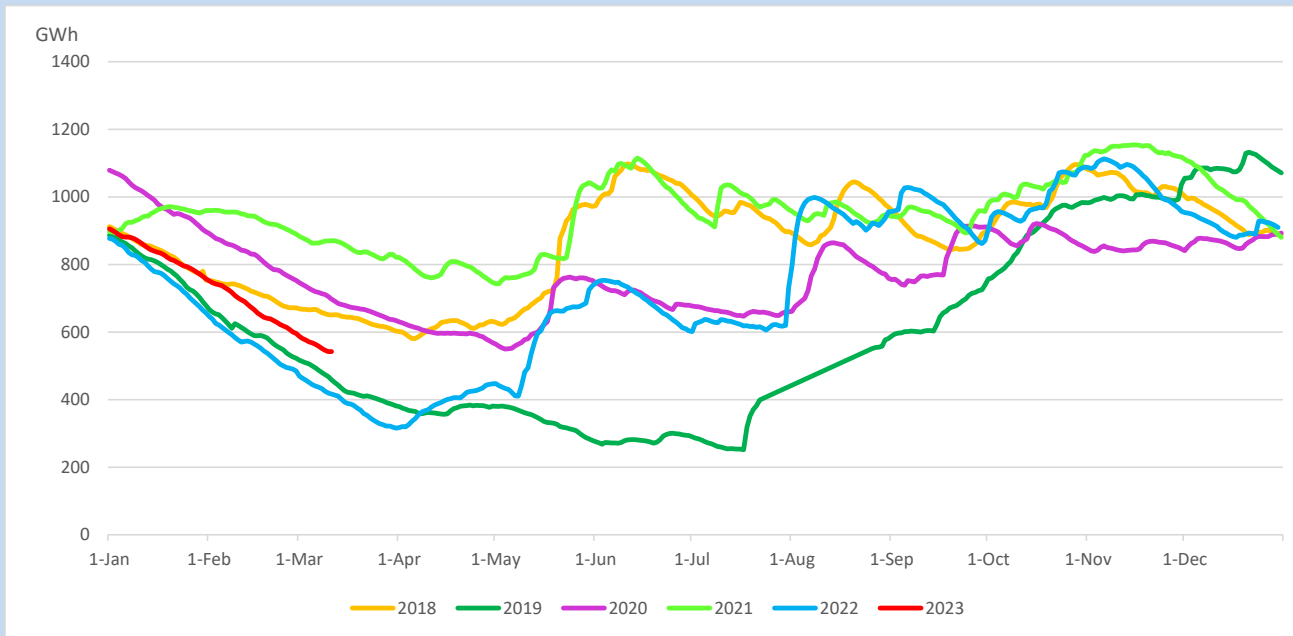
Reservoir Levels -

as at 06.00 Hr on March 13, 2023

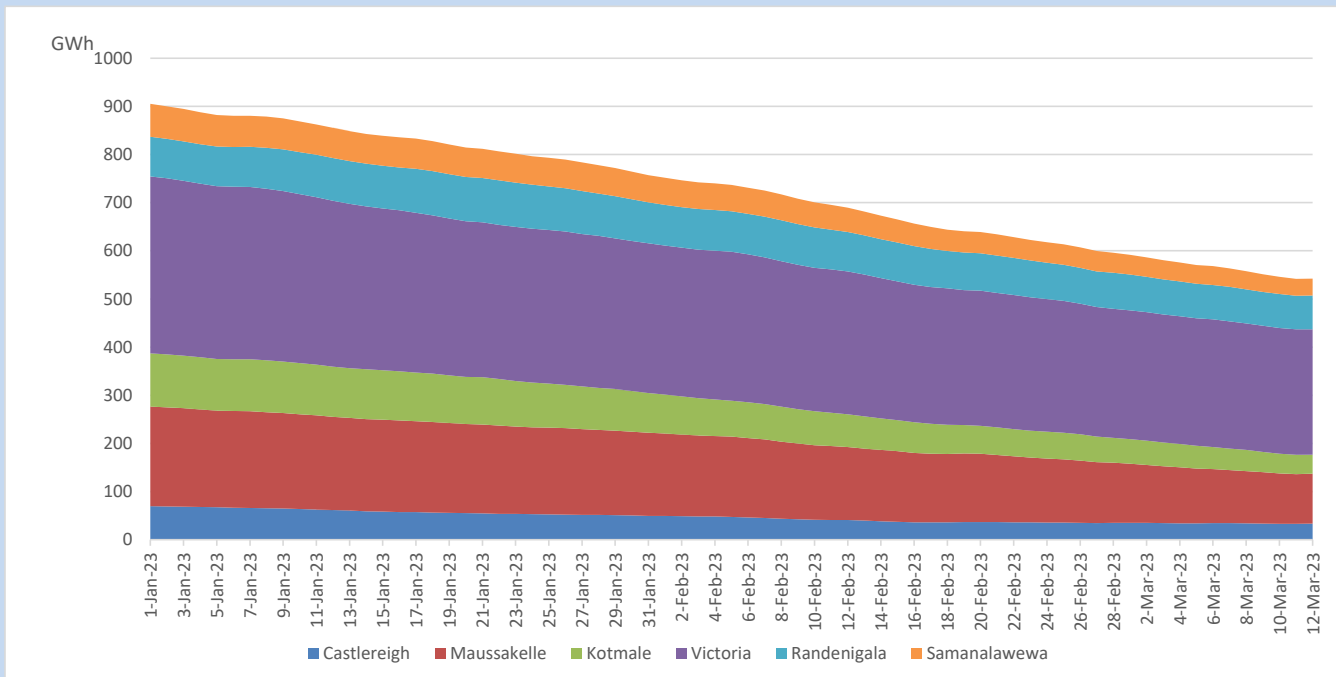


Total Reservoir Level	542.5 GWh
% of Total capacity	45.0%

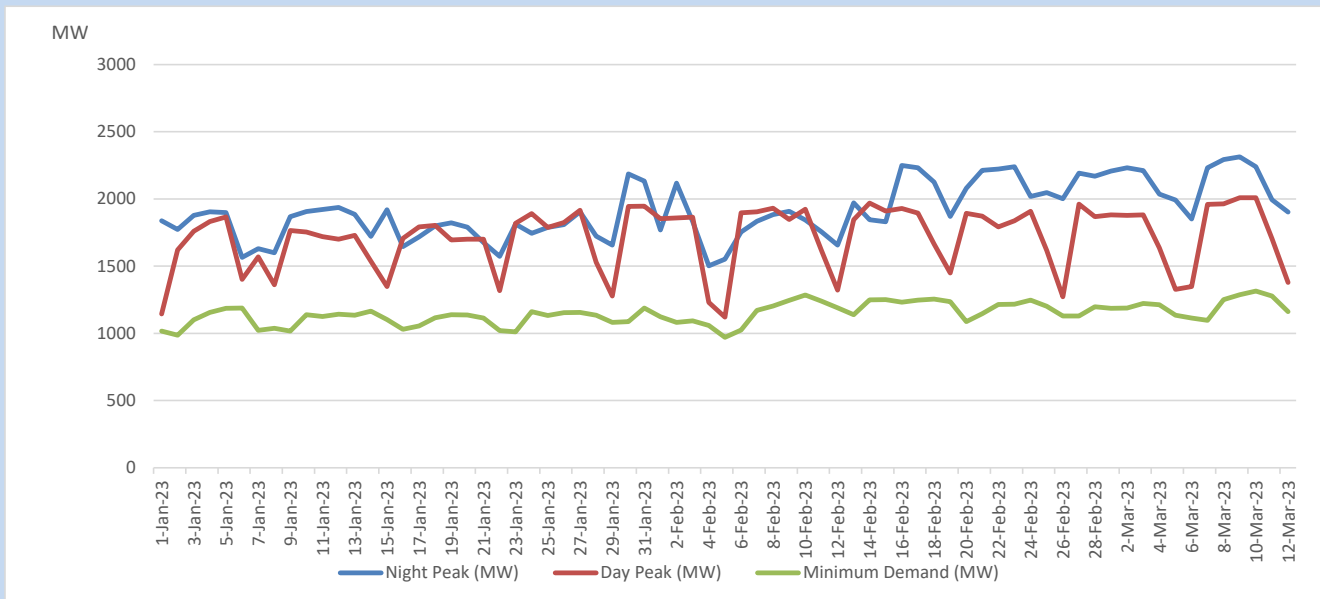
Comparison of Total Reservoir Storage Levels with Past Years



Variation of Major Hydro Reservoir Levels in the current year (GWh)



Variation of Demand during the current year

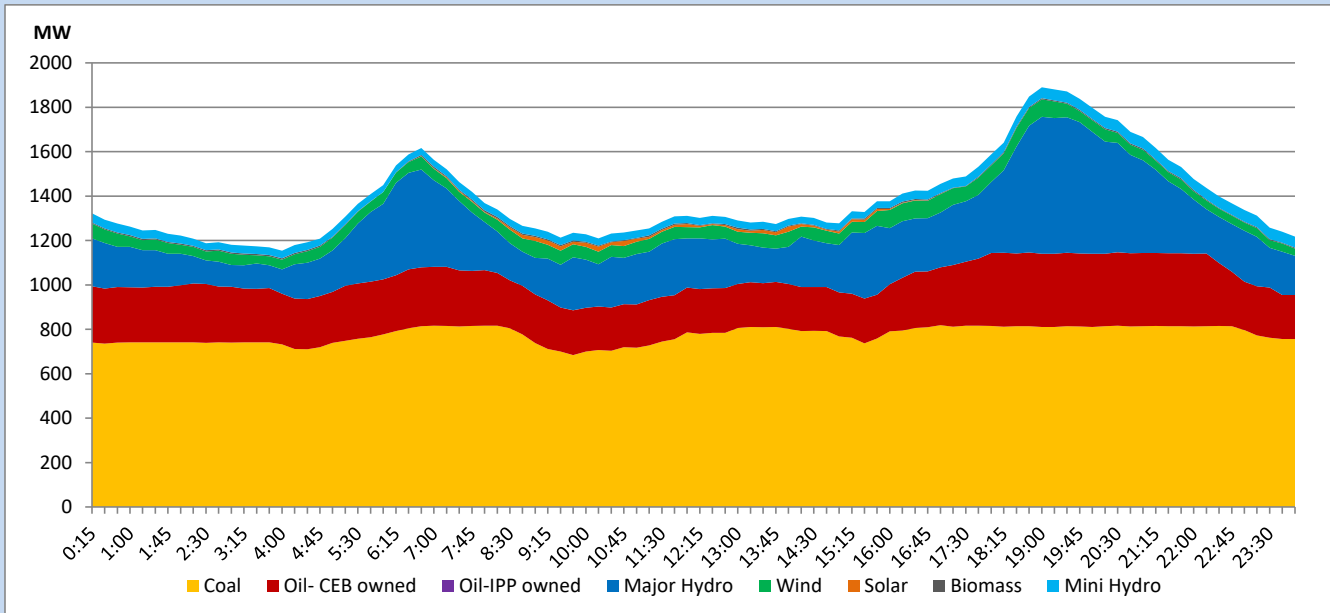


The above figures are excluding contribution from roof top solar, non telemetered solar and mini hydro plants

Daily Load Curve

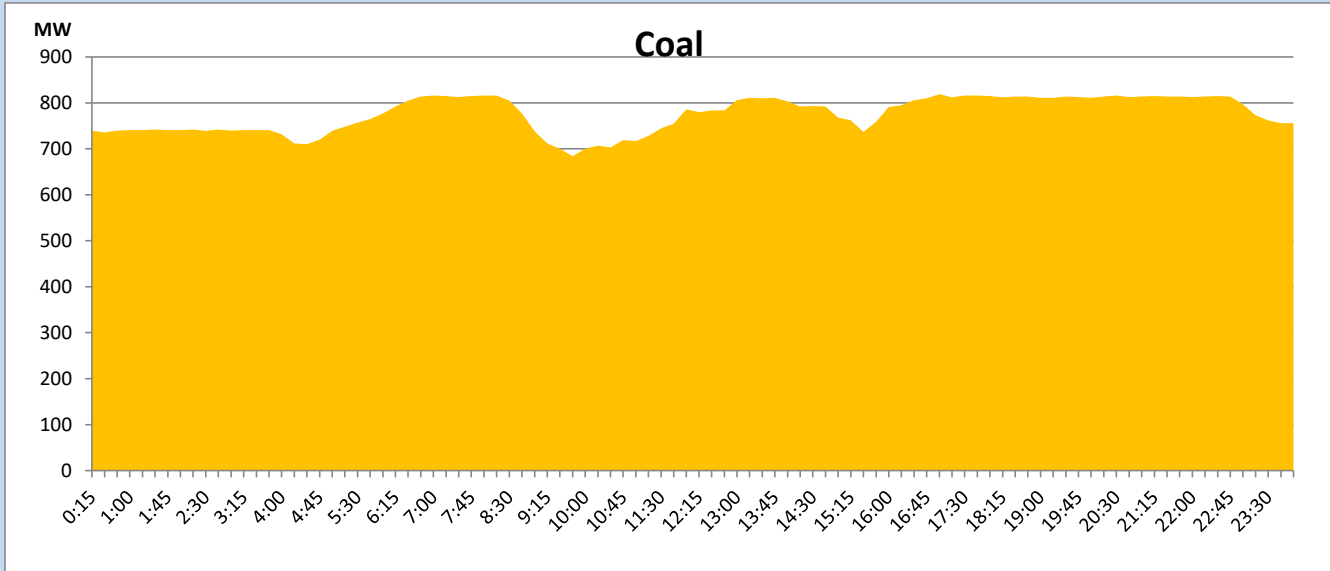
March 12, 2023

Solar and wind data is based on Telemetered Power Stations only



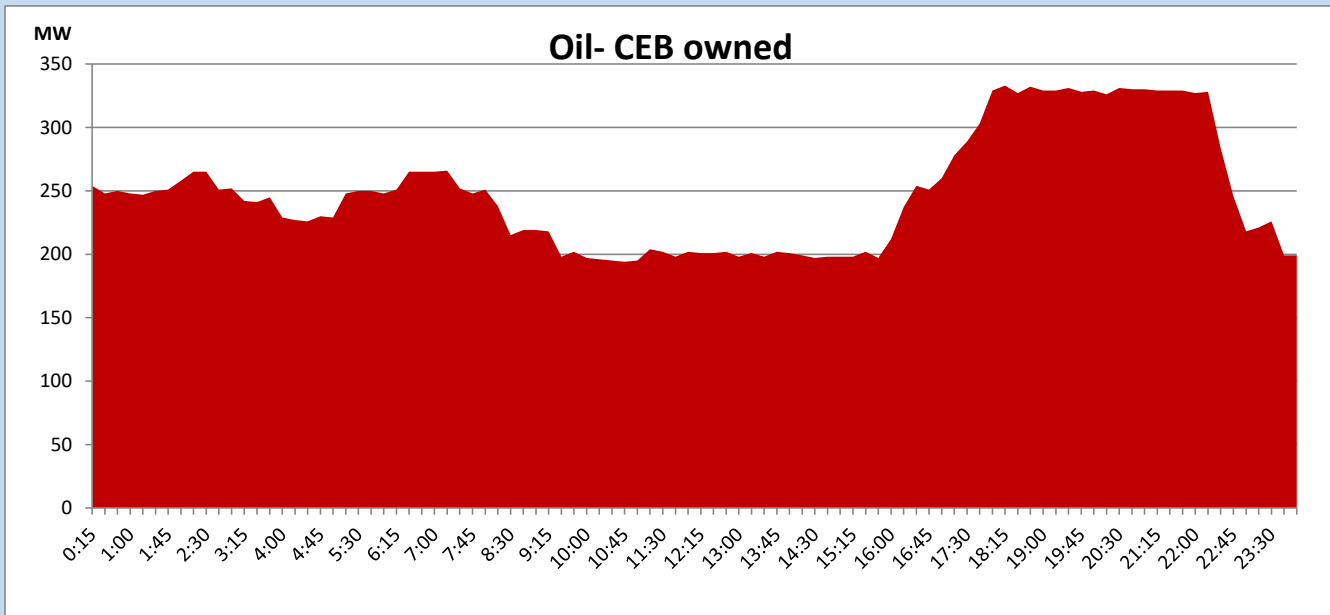
Coal Generation during

March 12, 2023



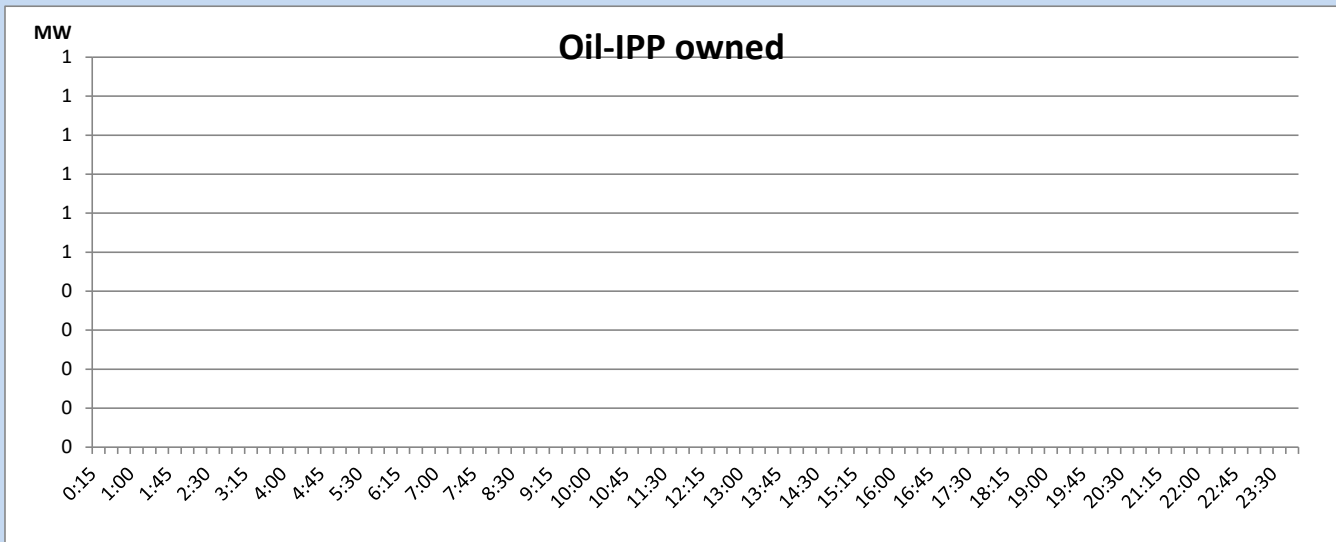
CEB Oil Plant Generation during

March 12, 2023



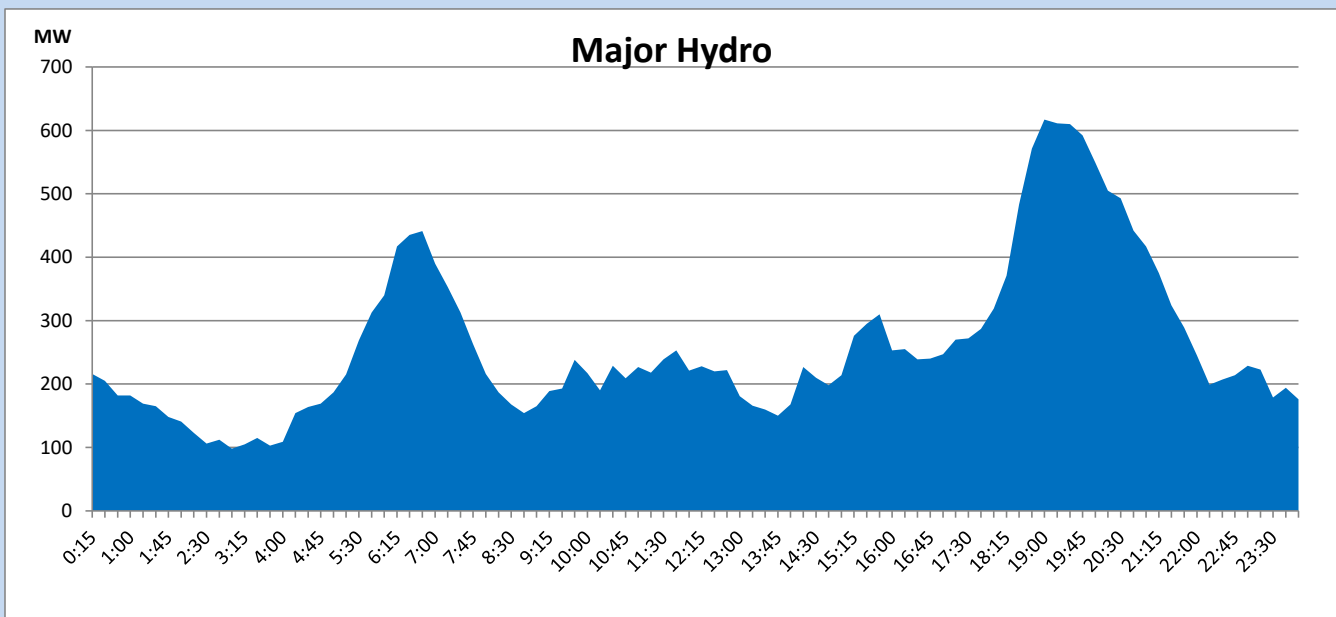
IPP Oil Plant Generation during

March 12, 2023



Major Hydro Generation during

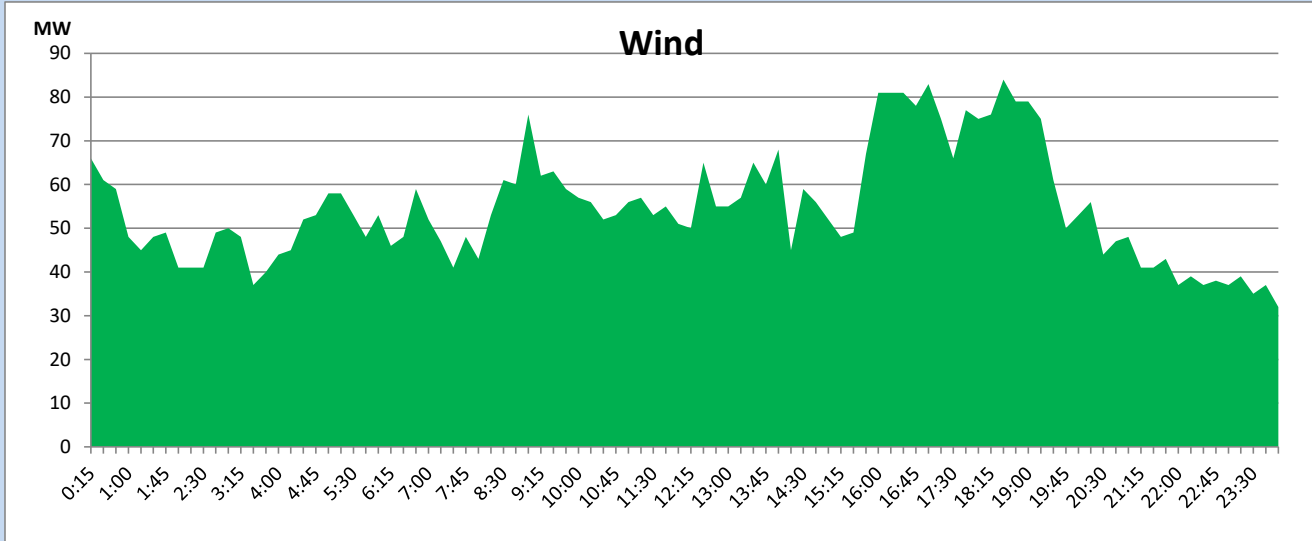
March 12, 2023



Wind Generation during

March 12, 2023

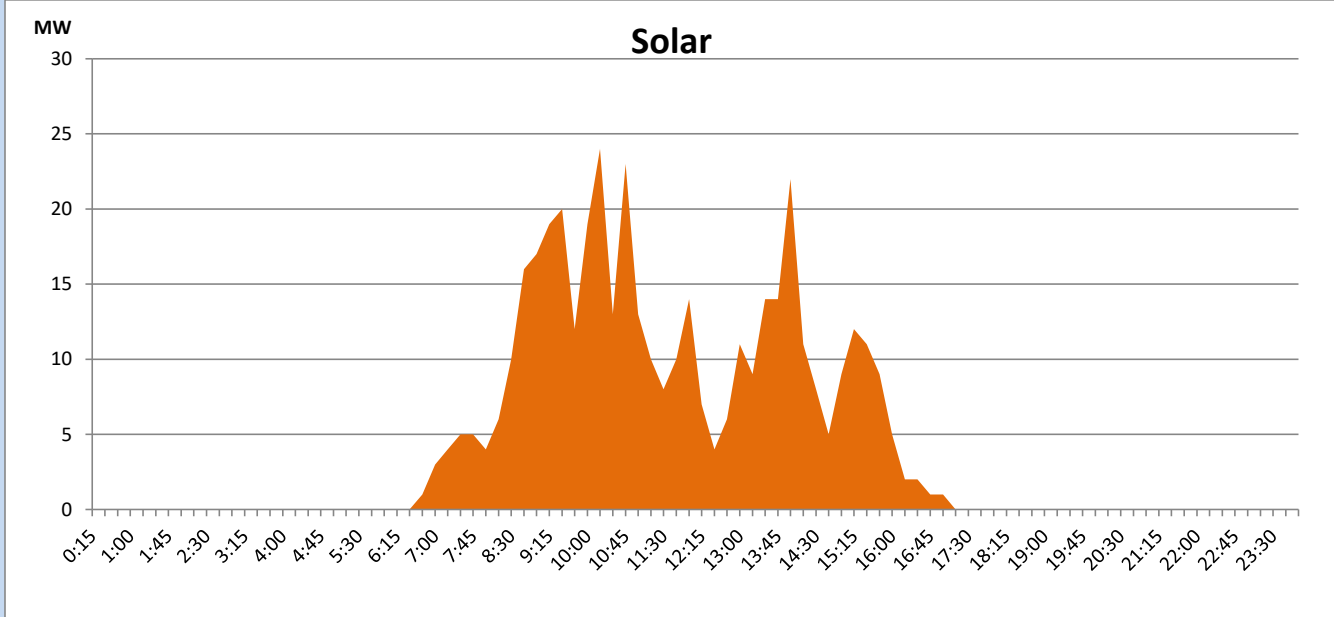
Based on Telemetered Power Stations only



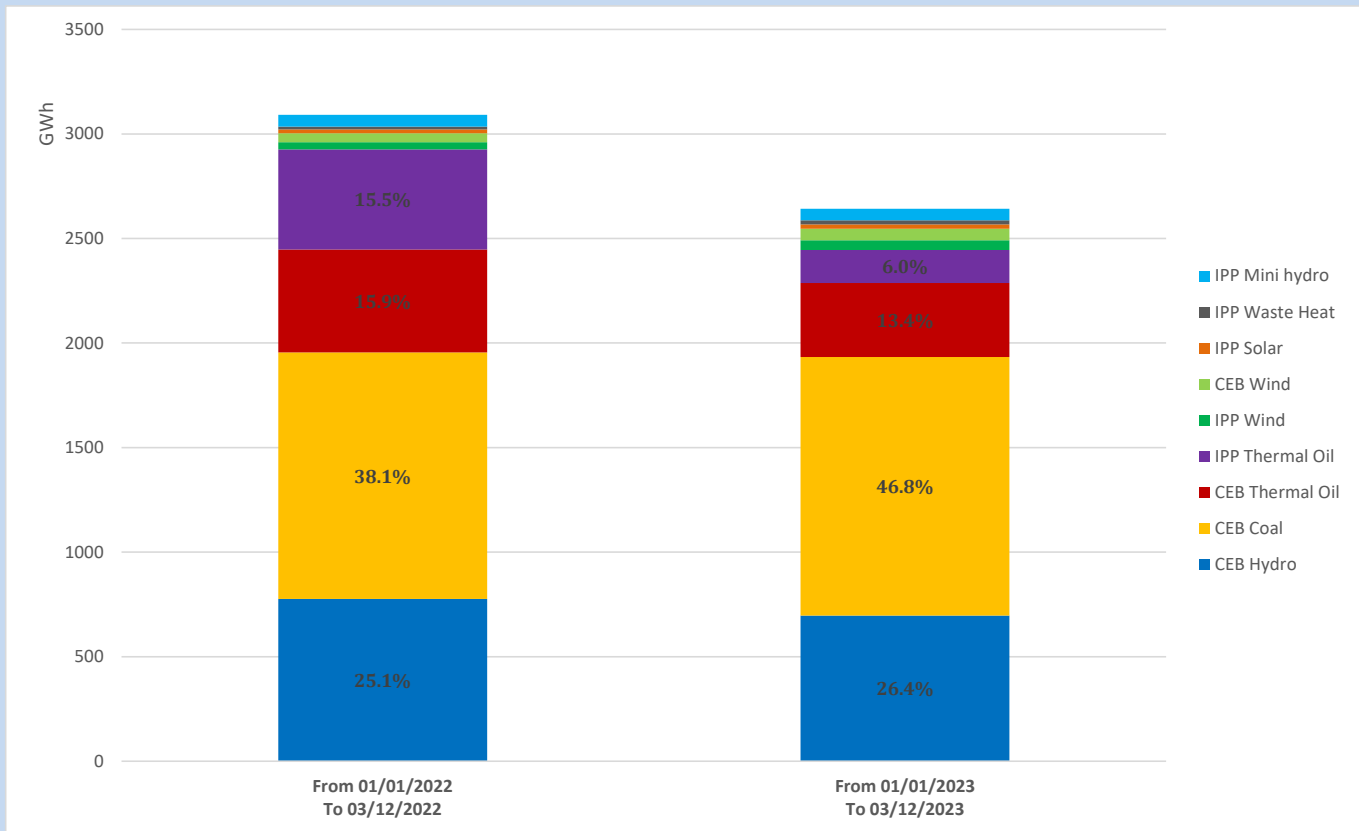
Solar Generation during

March 12, 2023

Based on Telemetered Power Stations only



Cumulative Dispatch Comparison with Last Year



Thermal Plant Fuel types

Power Station	Primary Fuel
CEB Thermal	
Sapugaskanda 1	Heavy Fuel
Sapugaskanda 2	Heavy Fuel
Kelanitissa Small Gas Turbines	Auto Diesel
GT 7 - Kelanitissa	Auto Diesel
Kelanitissa CCY	Naphtha or Diesel
Lakvijaya 1	Coal
Lakvijaya 2	Coal
Lakvijaya 3	Coal
Uthuru Janani	Heavy Fuel
Barge CEB	Heavy Fuel

Power Station	Primary Fuel
Private Thermal	
West Coast	Auto Diesel / Heavy Fuel

Major Incidents reported during the day

March 12, 2023

1). Polpitiya unit 02 tripped at 6:06hrs (13/03/2023), rejecting 30MW from the system due to lower guide bearing oil level low alarm. Polpitiya unit 02 is yet to be resume generation.