

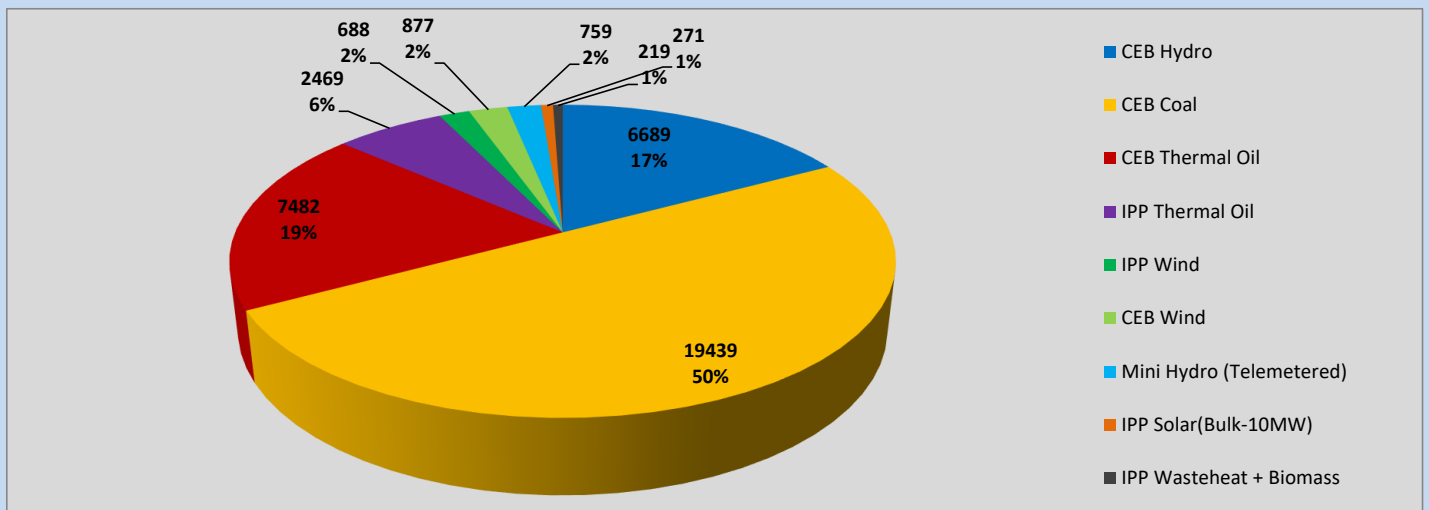
# Generation and Reservoirs Statistics

March 11, 2023



PUBLIC UTILITIES COMMISSION OF SRI LANKA

## Daily Generation Mix in MWh



Total Generation (Excluding estimated figures) =

38,893 MWh

### Estimated figures of CEB generation report

Estimated unserved energy = 0.00 GWh  
 Estimated Mini Hydro (Non telemetered) = 551 MWh  
 Estimated IPP Solar PV (Bulk 1-10MW) = 304 MWh  
 Estimated Solar Roof Top PV = 1490 MWh

## Cumulative Dispatch

Following data excludes the contribution from roof top solar, non telemetered solar and mini hydro plants

### For Current Month

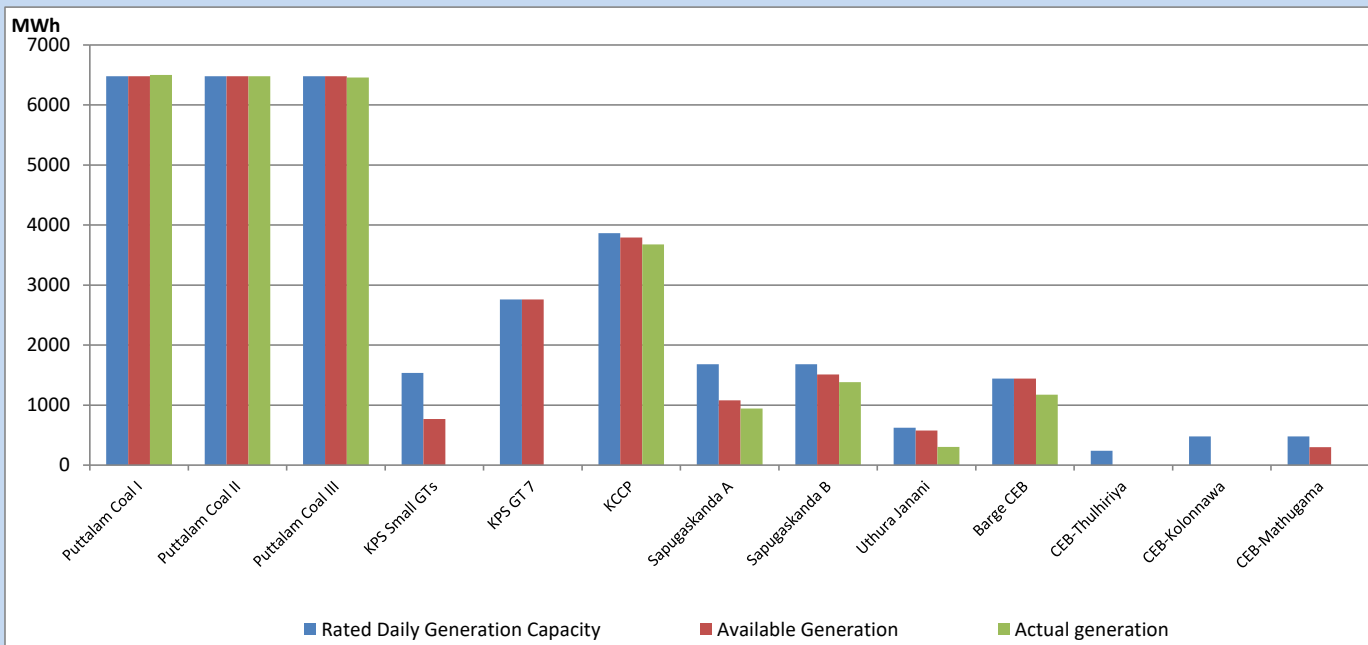
Category	Dispatch (GWh)	Percentage
CEB Hydro	89	20.63%
CEB Coal	213	49.30%
CEB Thermal Oil	71	16.54%
IPP Thermal	27	6.28%
SPP Wind	8	1.77%
CEB Wind	10	2.31%
Mini Hydro (Telemetered)	8	1.81%
IPP Solar(Bulk-10MW)	3	0.66%
IPP Wasteheat + BMP	3	0.70%
<b>Total</b>	<b>432</b>	

### For Current Year

Category	Dispatch (GWh)	Percentage
CEB Hydro	691	26.48%
CEB Coal	1,217	46.67%
CEB Thermal Oil	349	13.36%
IPP Thermal	158	6.07%
SPP Wind	46	1.75%
CEB Wind	54	2.09%
Mini Hydro (Telemetered)	54	2.07%
IPP Solar(Bulk-10MW)	19	0.75%
IPP Wasteheat	20	0.77%
<b>Total</b>	<b>2,608</b>	

## CEB owned Thermal Plant Dispatch

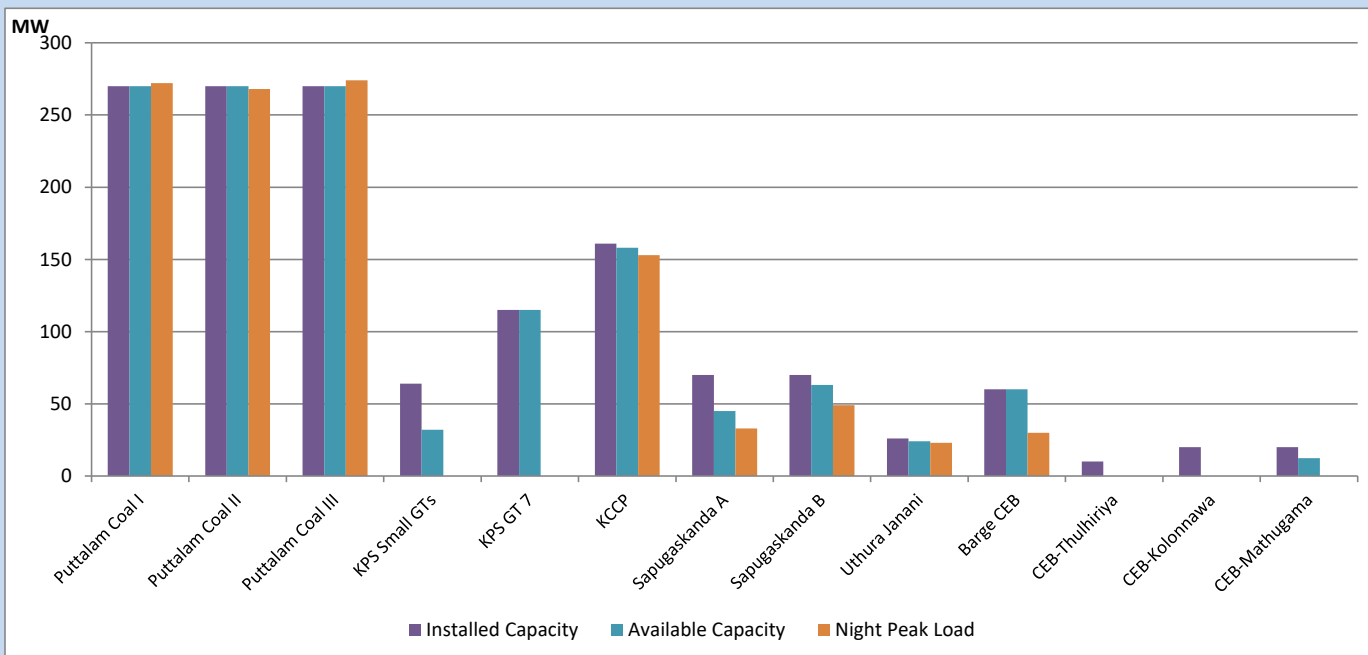
March 11, 2023



Available Generation is estimated based on plant availability at 6.00am on

March 12, 2023

## CEB owned Thermal Plant Loading at the Night Peak

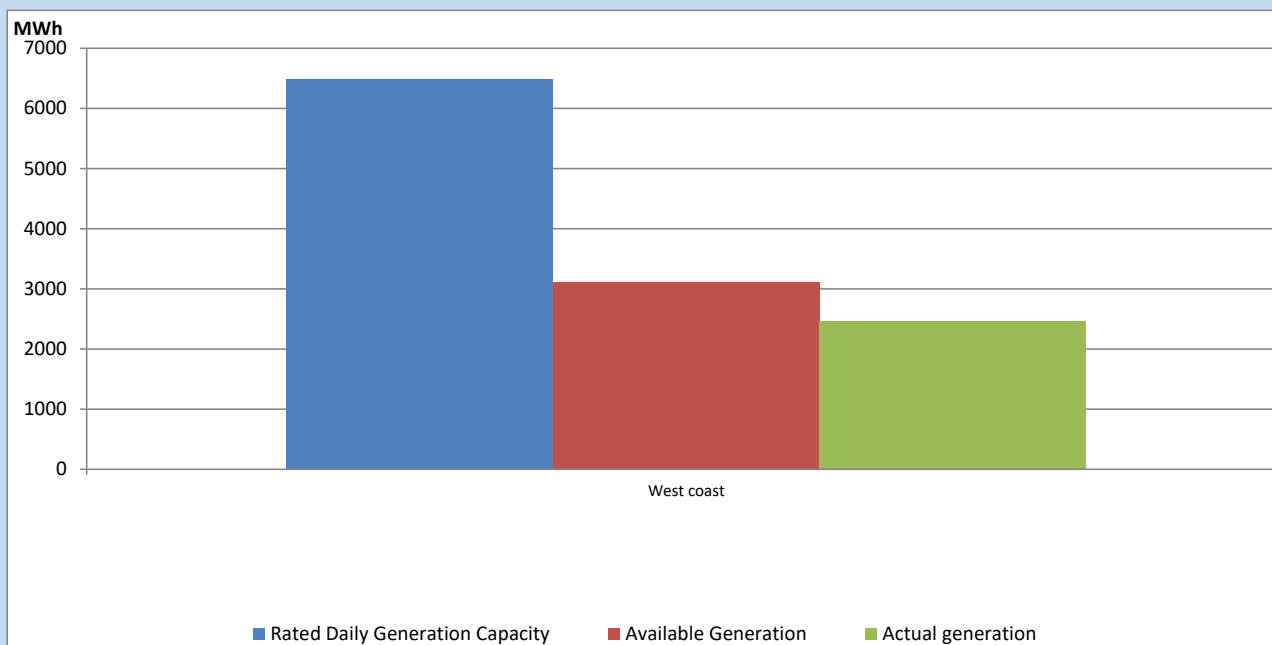


Note- Plant availability is recorded at 6.00 am on

March 12, 2023

## IPP owned Thermal Plant Dispatch

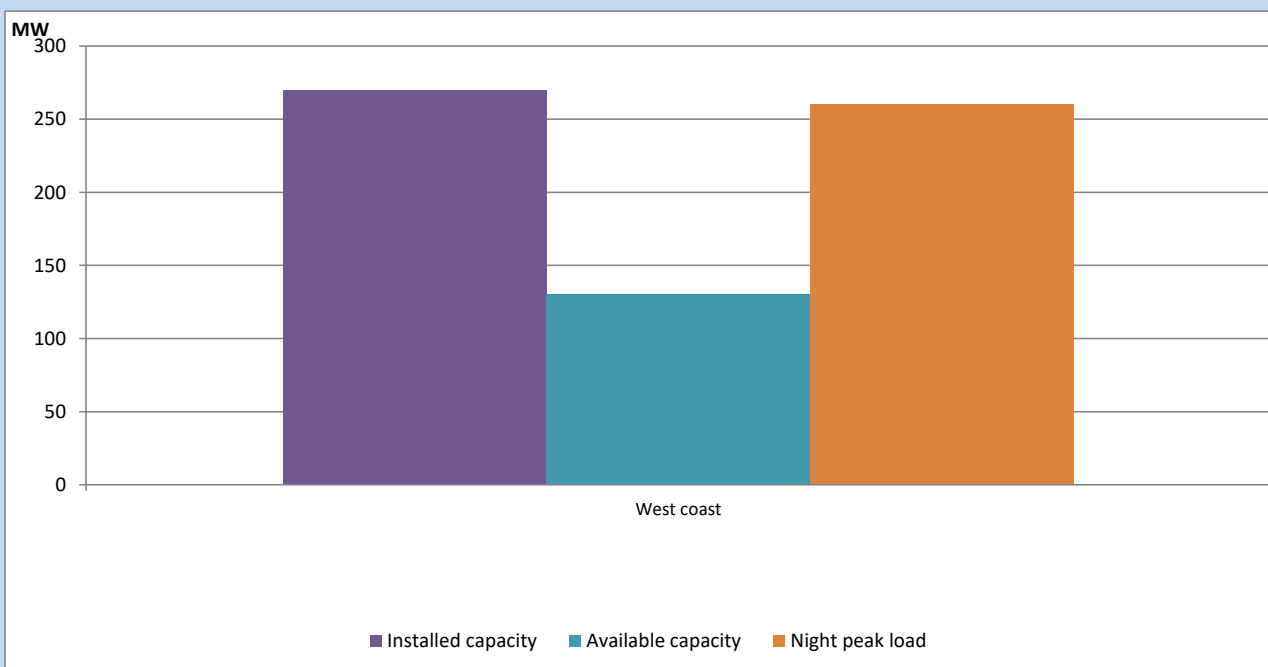
March 11, 2023



Available Generation is estimated based on plant availability at 6.00am on

March 12, 2023

## IPP owned Thermal Plant Loading at the Night Peak

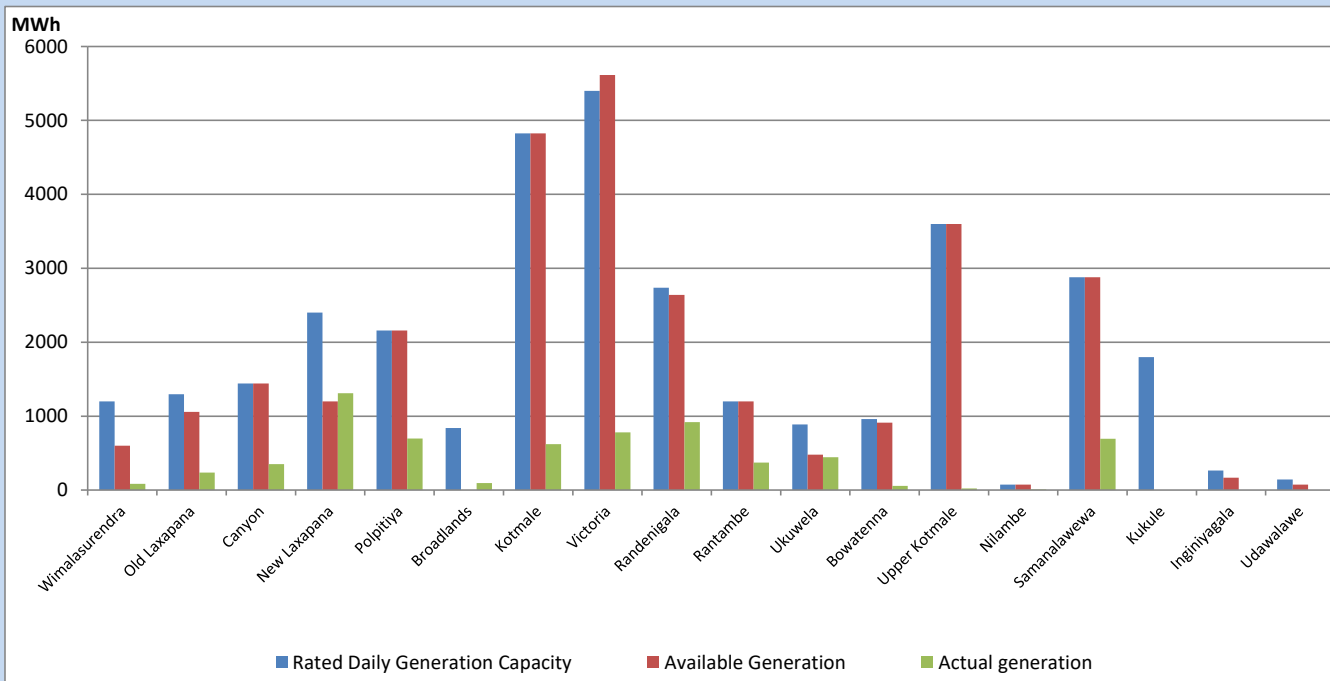


Note- Plant availability is recorded at 6.00 am on

March 12, 2023

## Major Hydro Plant Dispatch

March 11, 2023

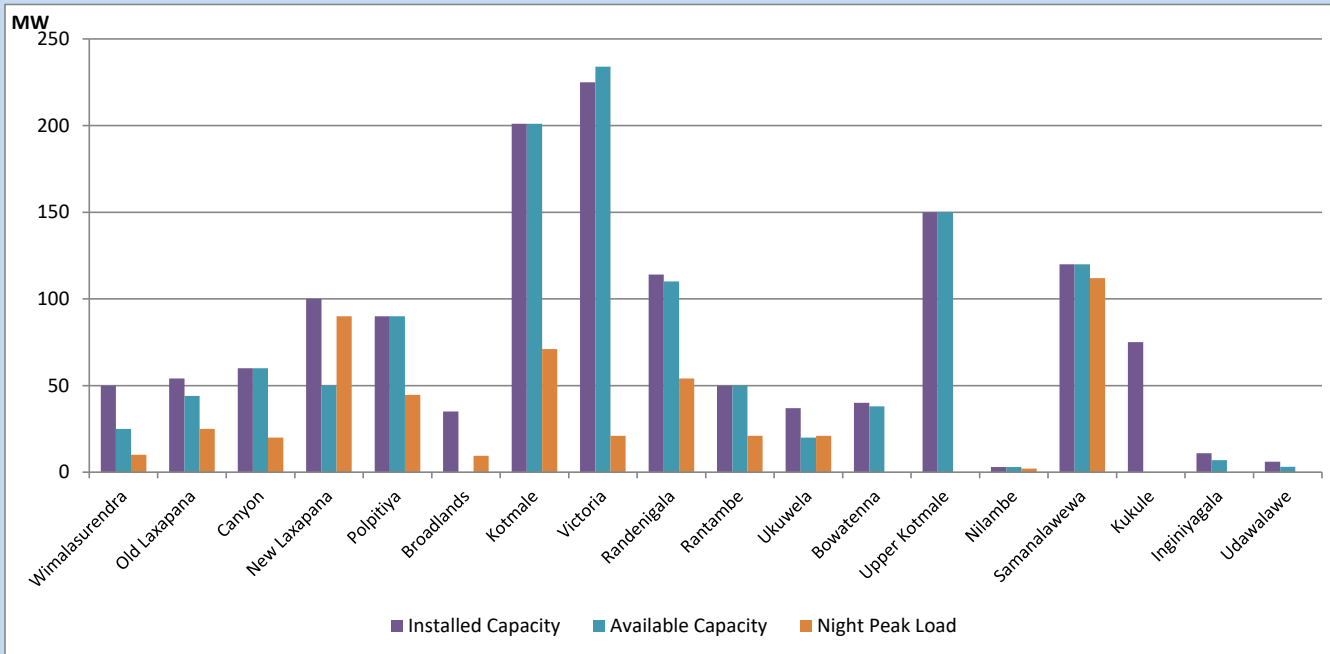


Available Generation is estimated based on plant availability at 6.00am on  
Broadlands power plant is operating in the Commissioning Stage

March 12, 2023

## Major Hydro Plant Loading at Night Peak

March 11, 2023



Note- Plant availability is recorded at 6.00 am on  
Broadlands power plant is operating in the Commissioning Stage

March 12, 2023

## Summary of Major Plant performance

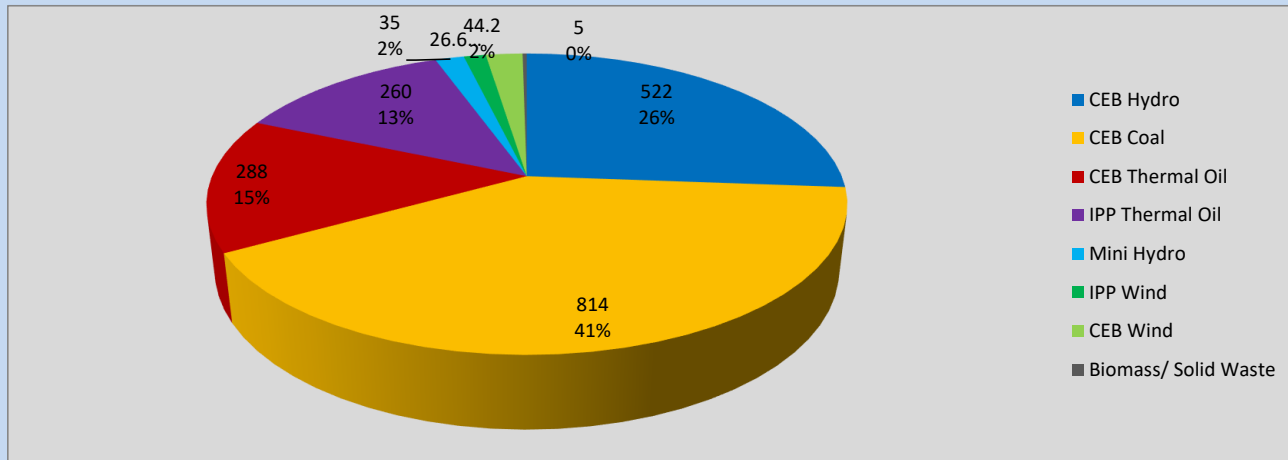
Plant	Installed Capacity	Plant Availability	Night peak Load	Plant Dispatch
	(MW)	(MW)	(MW)	(MWh)
Wimalasurendra	50	25	10	83
Old Laxapana	54	44	25	235
Canyon	60	60	20	352
New Laxapana	100	50	90	1,310
Polpitiya	90	90	45	697
Broadlands	35	0	10	93
Kotmale	201	201	71	620
Victoria	225	234	21	781
Randenigala	114	110	54	920
Rantambe	50	50	21	371
Ukuwela	37	20	21	444
Bowatenna	40	38	0	58
Upper Kotmale	150	150	0	23
Nilambe	3	3	2	9
Samanalawewa	120	120	112	693
Kukule	75	0	0	0
Inginiyagala	11	7	0	0
Udawalawe	6	3	0	0
Puttalam Coal I	270	270	272	6,501
Puttalam Coal II	270	270	268	6,478
Puttalam Coal III	270	270	274	6,460
KPS Small GTs	64	32	0	0
KPS GT 7	115	115	0	0
KCCP	161	158	153	3,677
Sapugaskanda A	70	45	33	944
Sapugaskanda B	70	63	49	1,383
Uthura Janani	26	24	23	305
Barge CEB	60	60	30	1,173
CEB-Thulhiriya	10	0	0	0
CEB-Kolonnawa	20	0	0	0
CEB-Mathugama	20	12	0	0
ACE Matara	24	0	0	0
Asia Power	50	0	0	0
Sojitz Kelanitissa	163	0	0	0
West Coast	270	130	260	2,469
Nothern Power	36	0	0	0
ACE Embilipitiya	93	0	0	0
<b>Total</b>	<b>3,483</b>	<b>2,655</b>	<b>1,974</b>	<b>38,893</b>

Plant availability is the availability recorded at 6 am on

March 12, 2023

## Contribution to the Night Peak in MW

March 11, 2023

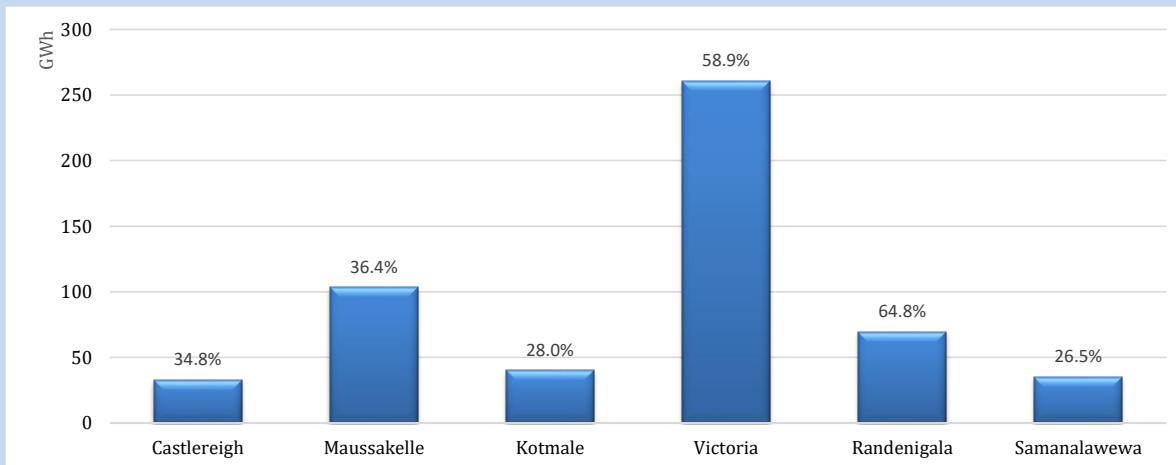


Night Peak*	1,995 MW
Day Peak	1,705 MW
Minimum Demand	1,277 MW

Above figures are excluding contribution from roof top solar, non telemetered solar and mini hydro plants

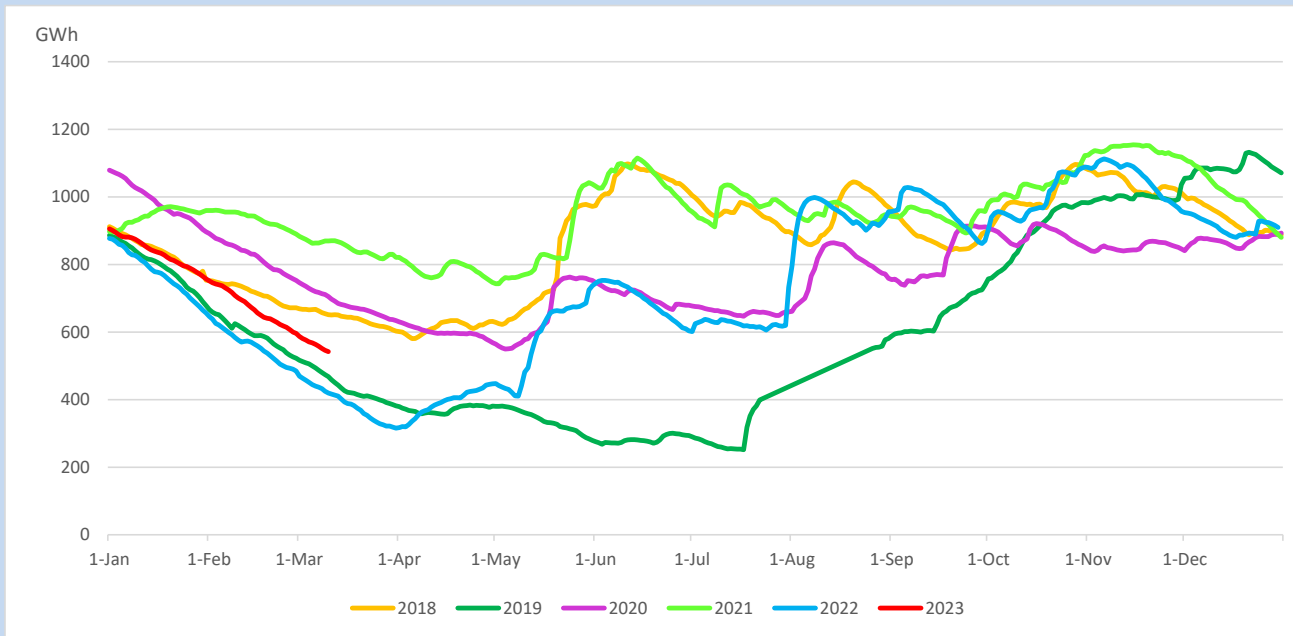
## Reservoir Levels -

as at 06.00 Hr on March 12, 2023

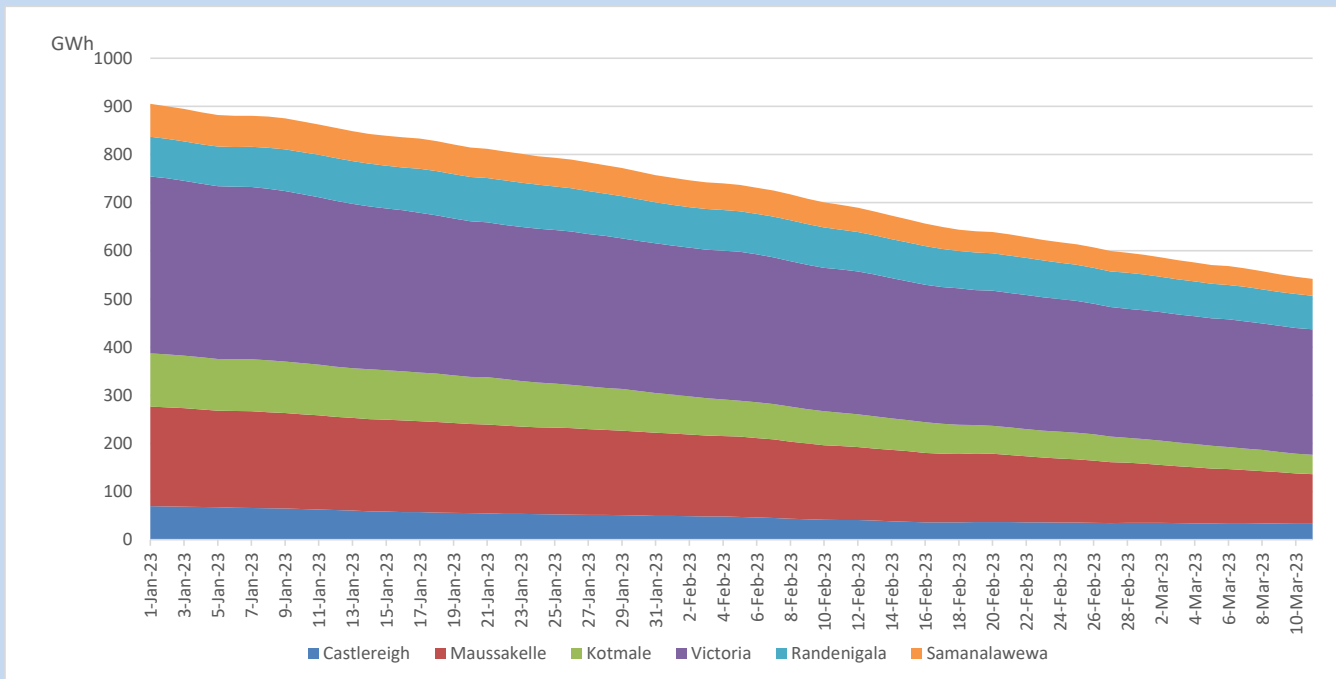


Total Reservoir Level	542 GWh
% of Total capacity	45.0%

## Comparison of Total Reservoir Storage Levels with Past Years

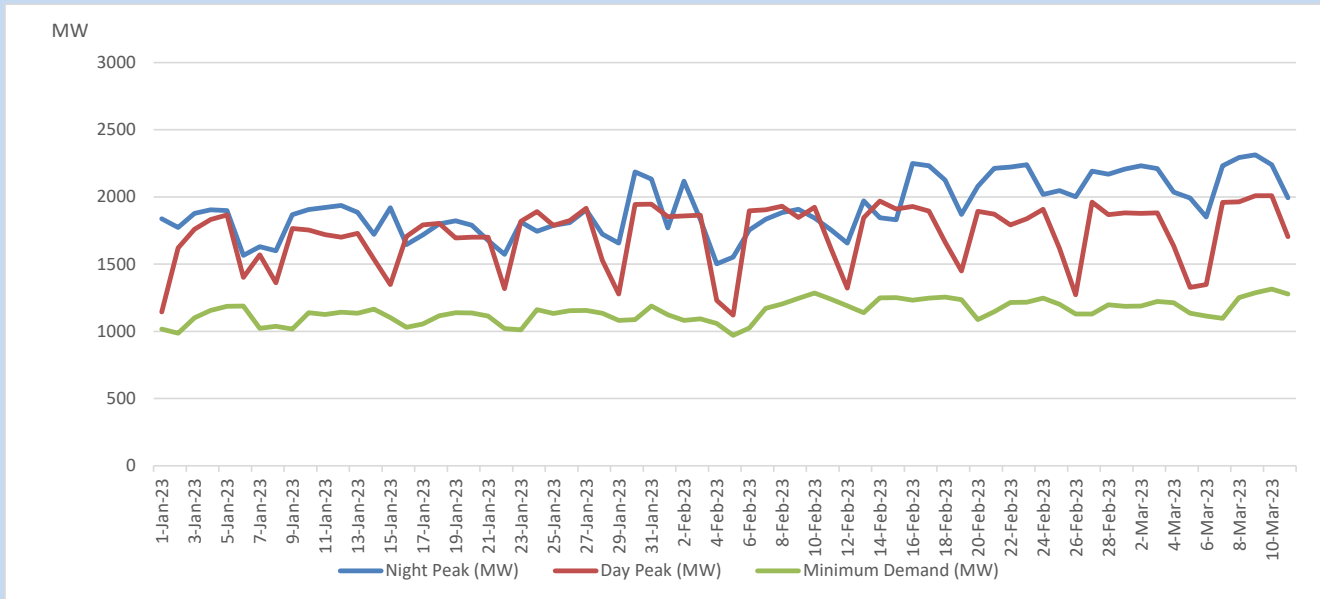


## Variation of Major Hydro Reservoir Levels in the current year (GWh)





## Variation of Demand during the current year

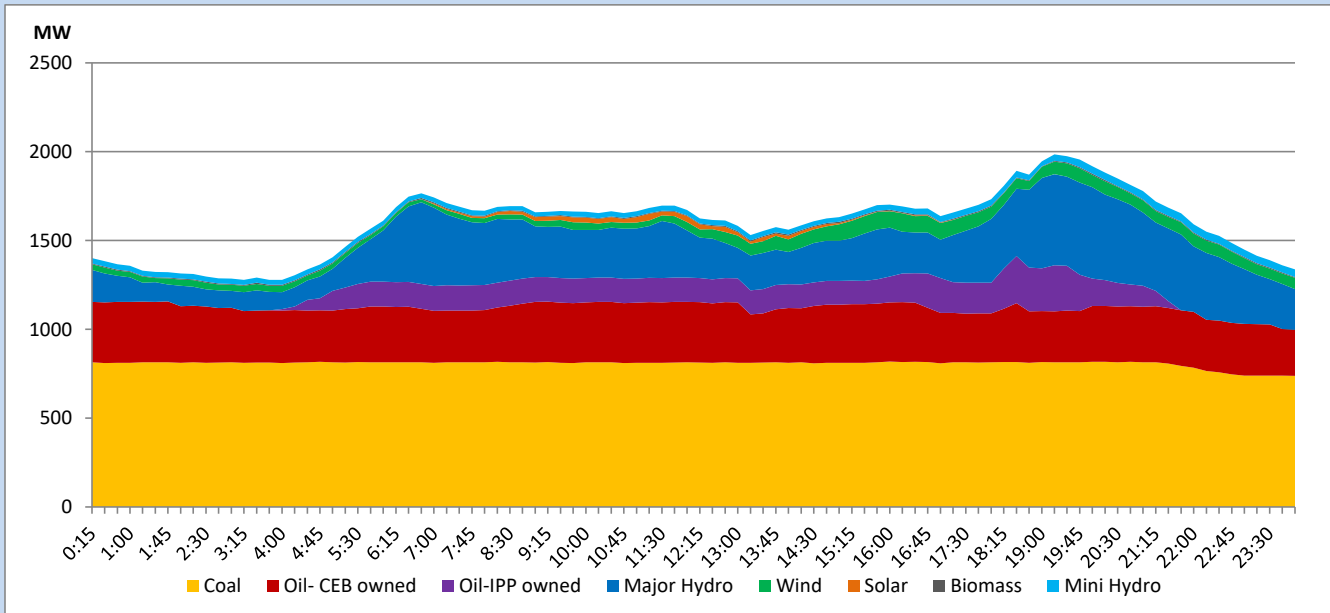


The above figures are excluding contribution from roof top solar, non telemetered solar and mini hydro plants

## Daily Load Curve

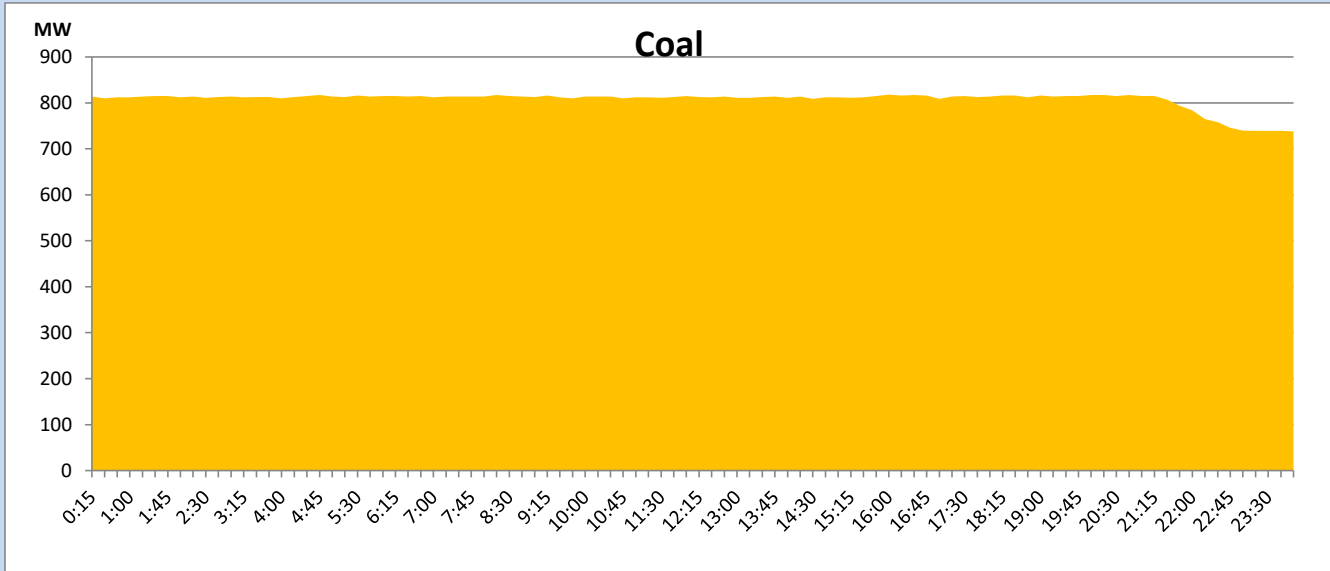
March 11, 2023

Solar and wind data is based on Telemetered Power Stations only



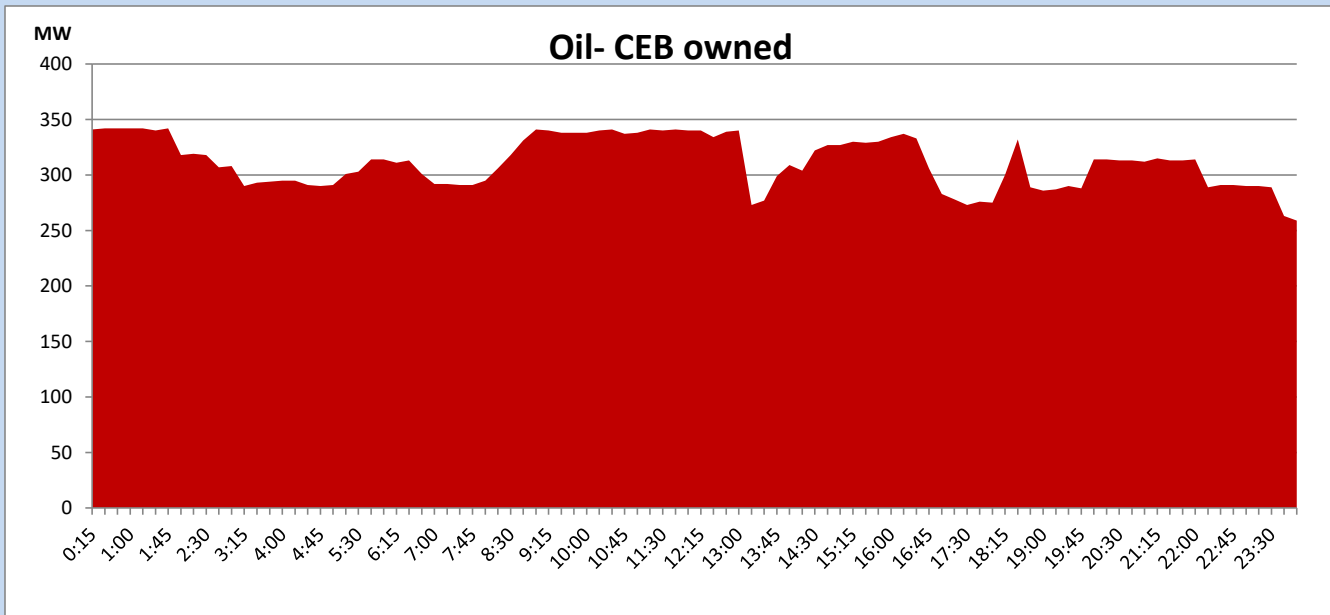
## Coal Generation during

March 11, 2023



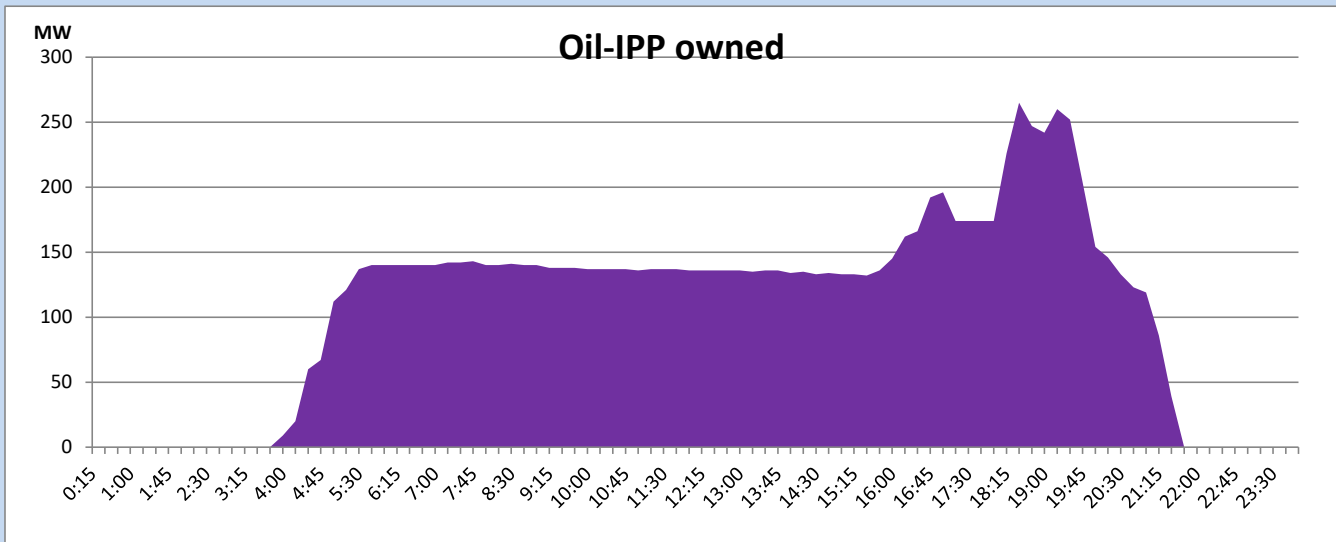
## CEB Oil Plant Generation during

March 11, 2023



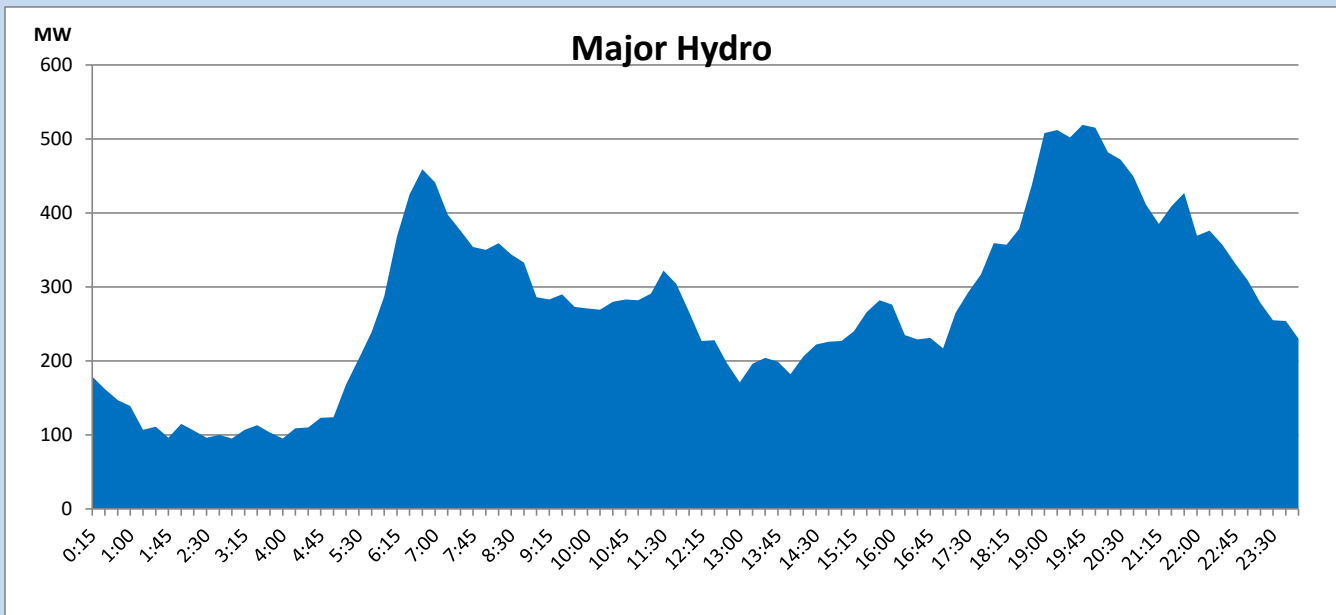
## IPP Oil Plant Generation during

March 11, 2023



## Major Hydro Generation during

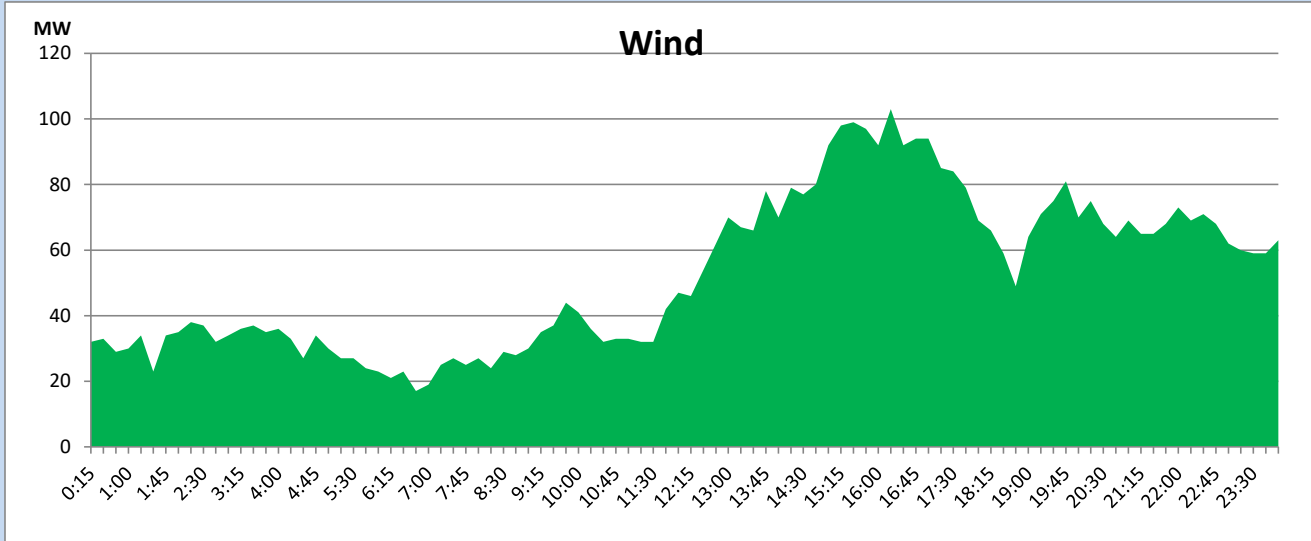
March 11, 2023



## Wind Generation during

March 11, 2023

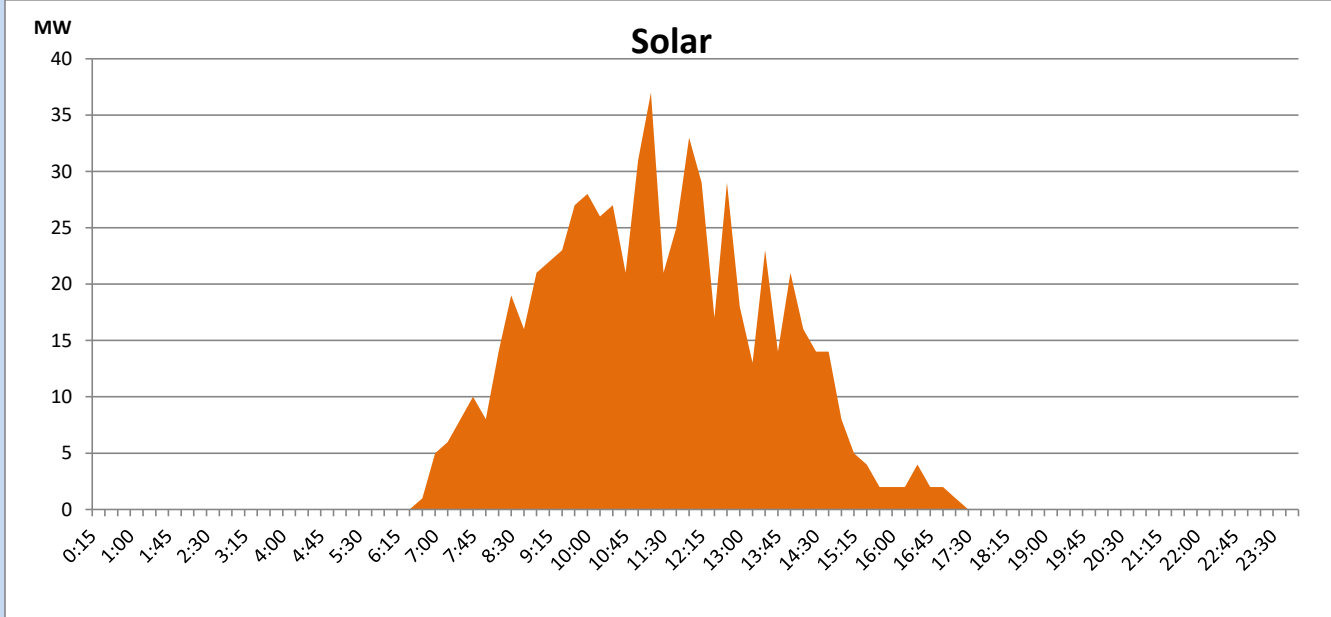
Based on Telemetered Power Stations only



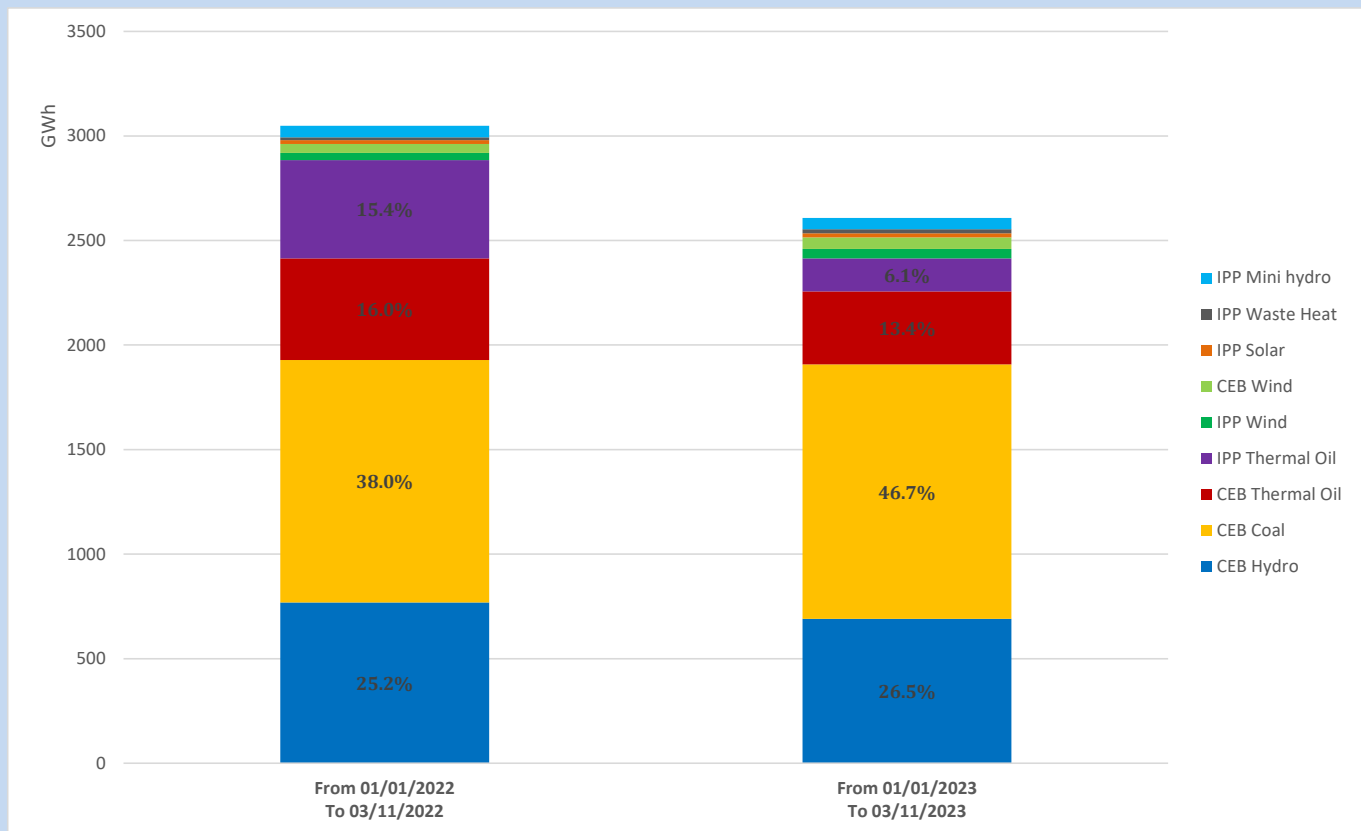
## Solar Generation during

March 11, 2023

Based on Telemetered Power Stations only



## Cumulative Dispatch Comparison with Last Year



### Thermal Plant Fuel types

Power Station	Primary Fuel
CEB Thermal	
Sapugaskanda 1	Heavy Fuel
Sapugaskanda 2	Heavy Fuel
Kelanitissa Small Gas Turbines	Auto Diesel
GT 7 - Kelanitissa	Auto Diesel
Kelanitissa CCY	Naphtha or Diesel
Lakvijaya 1	Coal
Lakvijaya 2	Coal
Lakvijaya 3	Coal
Uthuru Janani	Heavy Fuel
Barge CEB	Heavy Fuel

Power Station	Primary Fuel
Private Thermal	
West Coast	Auto Diesel / Heavy Fuel

### Major Incidents reported during the day

March 11, 2023

1). Kotugoda-Kerawalapitiya 220kV cct 02 tripped from both ends at 18:42hrs, due to the operation of distance protection. Simultaneously, Biyagama-Sapugaskanda PS 132kV cct 02 tripped from both ends. Moreover, two generators at BMPP tripped at the same time. Biyagama-Sapugaskanda PS 132kV cct 02 was restored at 20:11hrs. Kotugoda-Kerawalapitiya 220kV cct 02 is yet to be restored.