

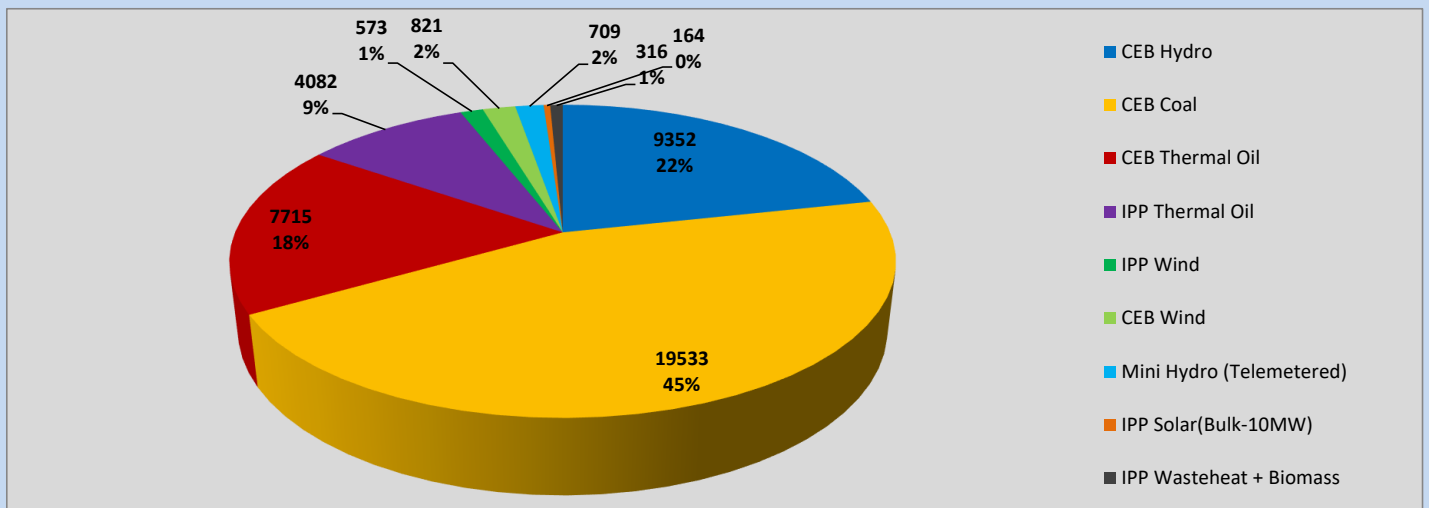
# Generation and Reservoirs Statistics

March 10, 2023



PUBLIC UTILITIES COMMISSION OF SRI LANKA

## Daily Generation Mix in MWh



Total Generation (Excluding estimated figures) =



**43,265 MWh**

### Estimated figures of CEB generation report

Estimated unserved energy = 0.00 GWh  
 Estimated Mini Hydro (Non telemetered) = 601 MWh  
 Estimated IPP Solar PV (Bulk 1-10MW) = 304 MWh  
 Estimated Solar Roof Top PV = 1490 MWh

## Cumulative Dispatch

Following data excludes the contribution from roof top solar, non telemetered solar and mini hydro plants

### For Current Month

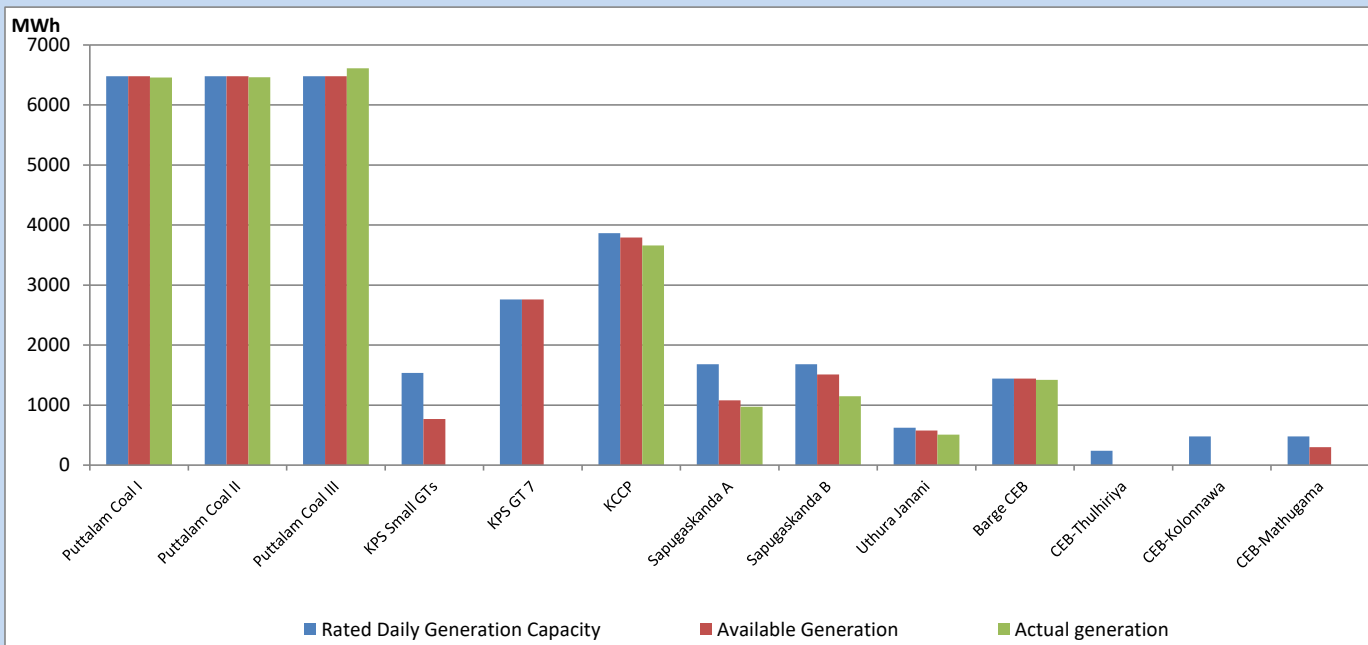
Category	Dispatch (GWh)	Percentage
CEB Hydro	82	20.97%
CEB Coal	193	49.23%
CEB Thermal Oil	64	16.28%
IPP Thermal	25	6.27%
SPP Wind	7	1.77%
CEB Wind	9	2.31%
Mini Hydro (Telemetered)	7	1.80%
IPP Solar (Bulk-10MW)	3	0.66%
IPP Wasteheat + BMP	3	0.71%
<b>Total</b>	<b>393</b>	

### For Current Year

Category	Dispatch (GWh)	Percentage
CEB Hydro	684	26.62%
CEB Coal	1,198	46.62%
CEB Thermal Oil	341	13.28%
IPP Thermal	156	6.06%
SPP Wind	45	1.75%
CEB Wind	54	2.08%
Mini Hydro (Telemetered)	53	2.07%
IPP Solar (Bulk-10MW)	19	0.75%
IPP Wasteheat	20	0.77%
<b>Total</b>	<b>2,569</b>	

## CEB owned Thermal Plant Dispatch

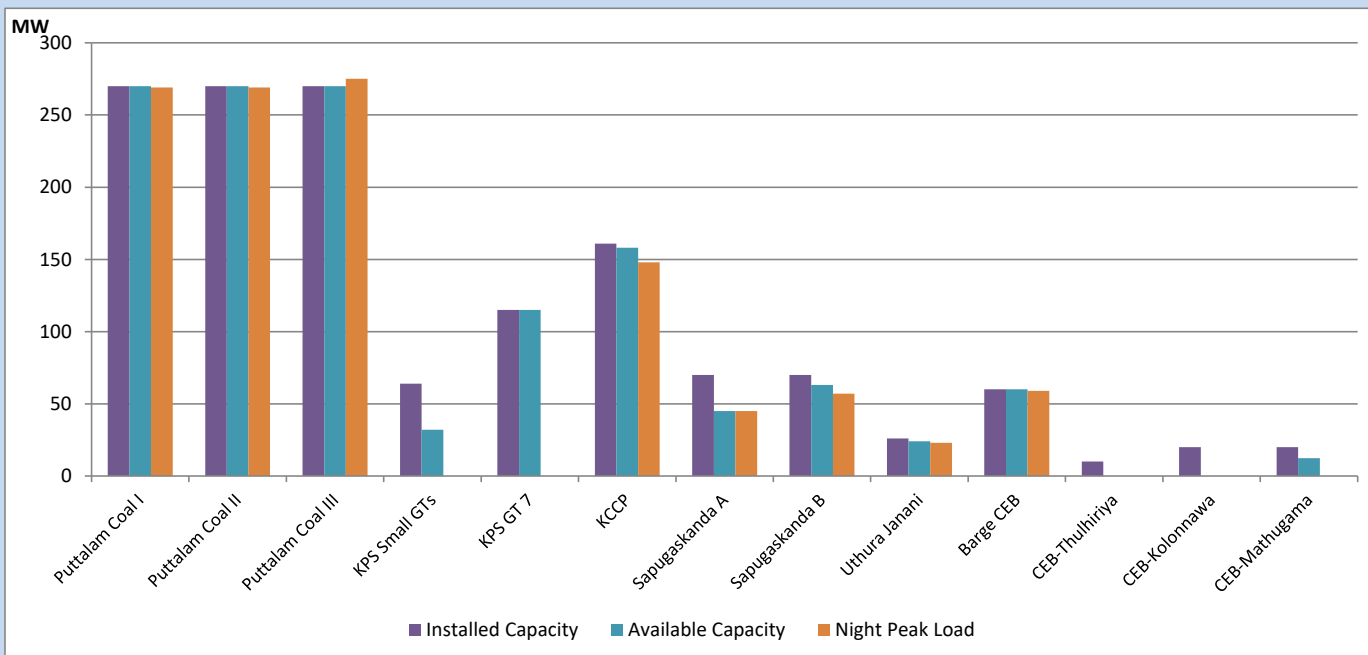
March 10, 2023



Available Generation is estimated based on plant availability at 6.00am on

March 11, 2023

## CEB owned Thermal Plant Loading at the Night Peak



Note- Plant availability is recorded at 6.00 am on

March 11, 2023

## IPP owned Thermal Plant Dispatch

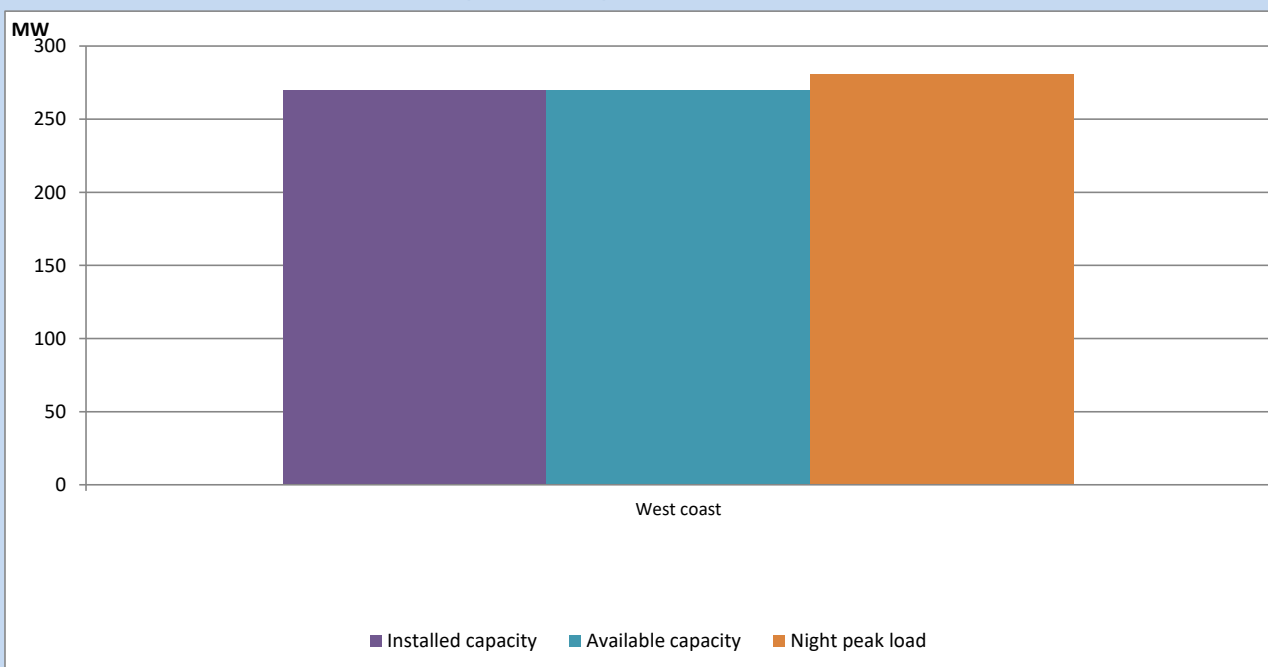
March 10, 2023



Available Generation is estimated based on plant availability at 6.00am on

March 11, 2023

## IPP owned Thermal Plant Loading at the Night Peak

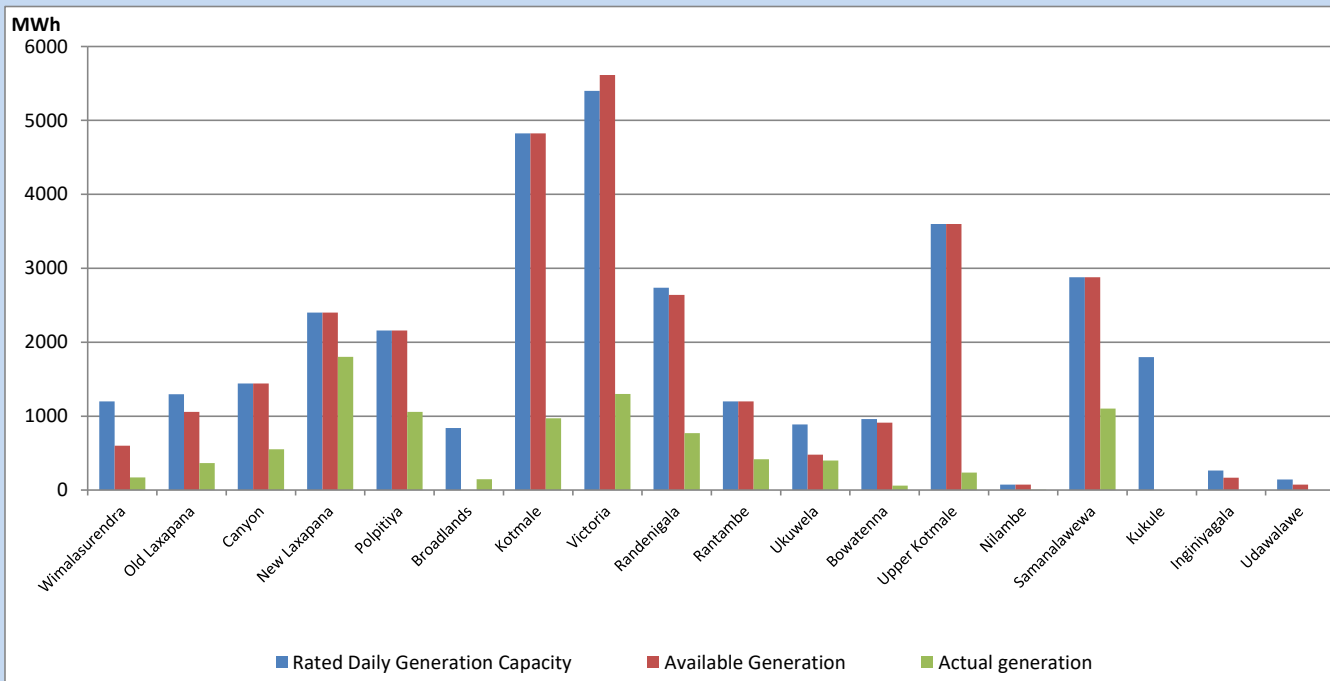


Note- Plant availability is recorded at 6.00 am on

March 11, 2023

## Major Hydro Plant Dispatch

March 10, 2023

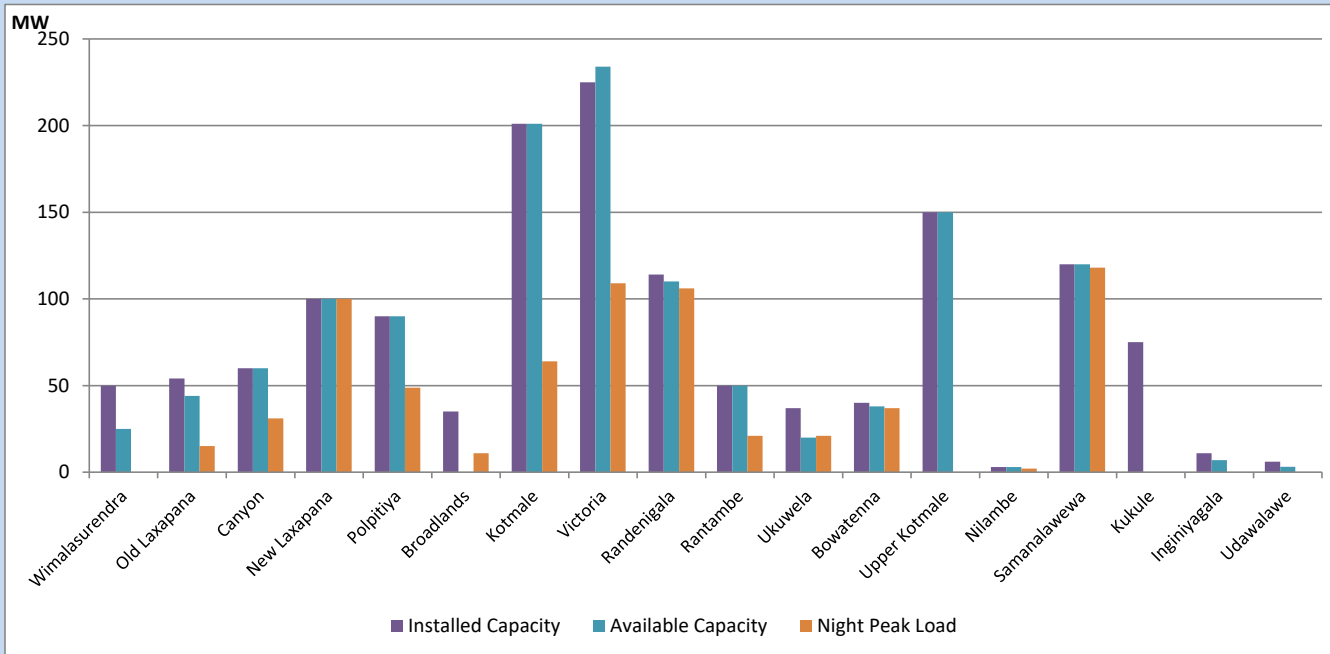


Available Generation is estimated based on plant availability at 6.00am on  
Broadlands power plant is operating in the Commissioning Stage

March 11, 2023

## Major Hydro Plant Loading at Night Peak

March 10, 2023



Note- Plant availability is recorded at 6.00 am on  
Broadlands power plant is operating in the Commissioning Stage

March 11, 2023

## Summary of Major Plant performance

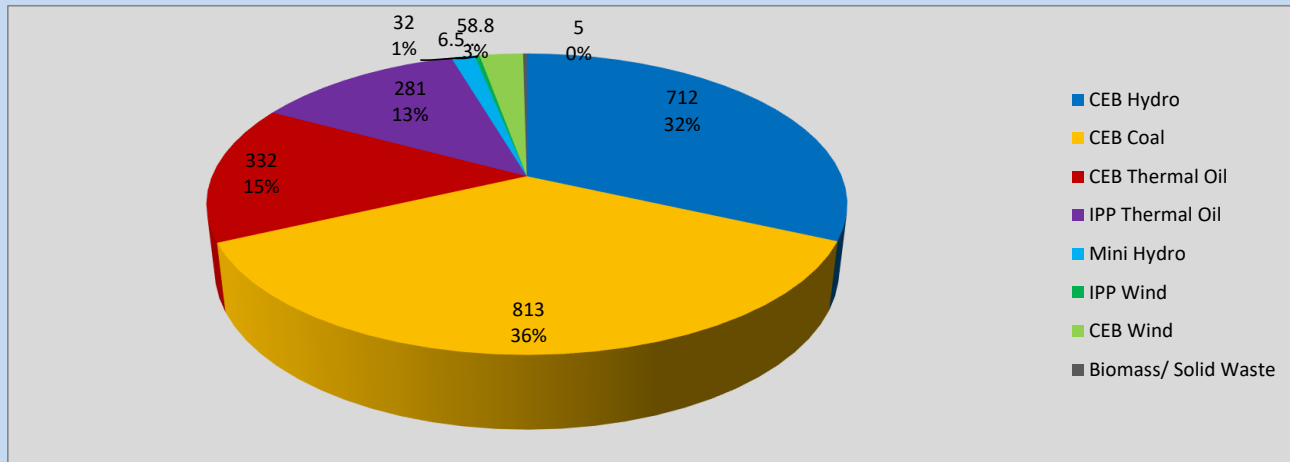
Plant	Installed Capacity	Plant Availability	Night peak Load	Plant Dispatch
	(MW)	(MW)	(MW)	(MWh)
Wimalasurendra	50	25	0	169
Old Laxapana	54	44	15	366
Canyon	60	60	31	551
New Laxapana	100	100	100	1,803
Polpitiya	90	90	49	1,058
Broadlands	35	0	11	148
Kotmale	201	201	64	970
Victoria	225	234	109	1,299
Randenigala	114	110	106	770
Rantambe	50	50	21	417
Ukuwela	37	20	21	398
Bowatenna	40	38	37	59
Upper Kotmale	150	150	0	237
Nilambe	3	3	2	6
Samanalawewa	120	120	118	1,101
Kukule	75	0	0	0
Inginiyagala	11	7	0	0
Udawalawe	6	3	0	0
Puttalam Coal I	270	270	269	6,460
Puttalam Coal II	270	270	269	6,463
Puttalam Coal III	270	270	275	6,610
KPS Small GTs	64	32	0	0
KPS GT 7	115	115	0	0
KCCP	161	158	148	3,662
Sapugaskanda A	70	45	45	974
Sapugaskanda B	70	63	57	1,147
Uthura Janani	26	24	23	510
Barge CEB	60	60	59	1,422
CEB-Thulhiriya	10	0	0	0
CEB-Kolonnawa	20	0	0	0
CEB-Mathugama	20	12	0	0
ACE Matara	24	0	0	0
Asia Power	50	0	0	0
Sojitz Kelanitissa	163	0	0	0
West Coast	270	270	281	4,082
Nothern Power	36	0	0	0
ACE Embilipitiya	93	0	0	0
<b>Total</b>	<b>3,483</b>	<b>2,845</b>	<b>2,212</b>	<b>43,265</b>

Plant availability is the availability recorded at 6 am on

March 11, 2023

## Contribution to the Night Peak in MW

March 10, 2023

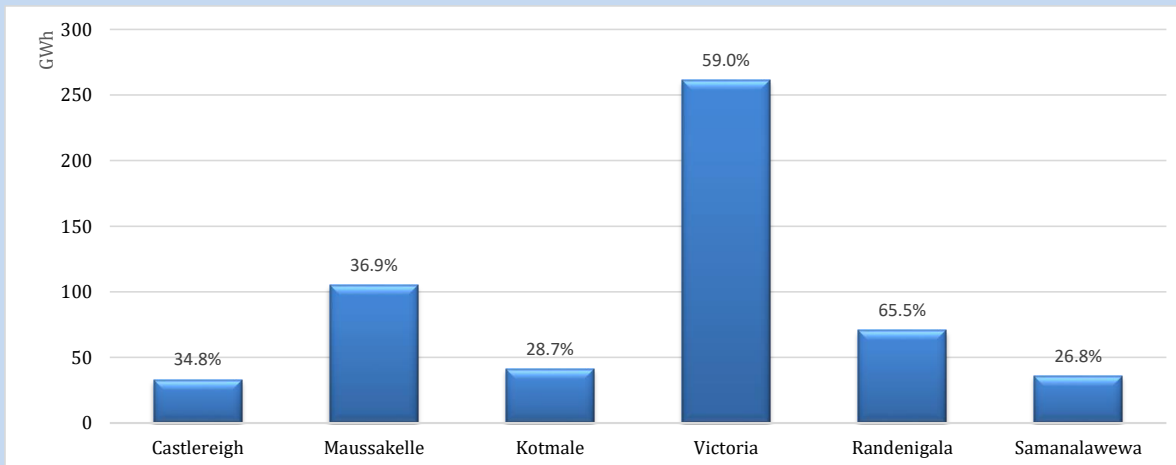


Night Peak*	2,240 MW
Day Peak	2,009 MW
Minimum Demand	1,315 MW

Above figures are excluding contribution from roof top solar, non telemetered solar and mini hydro plants

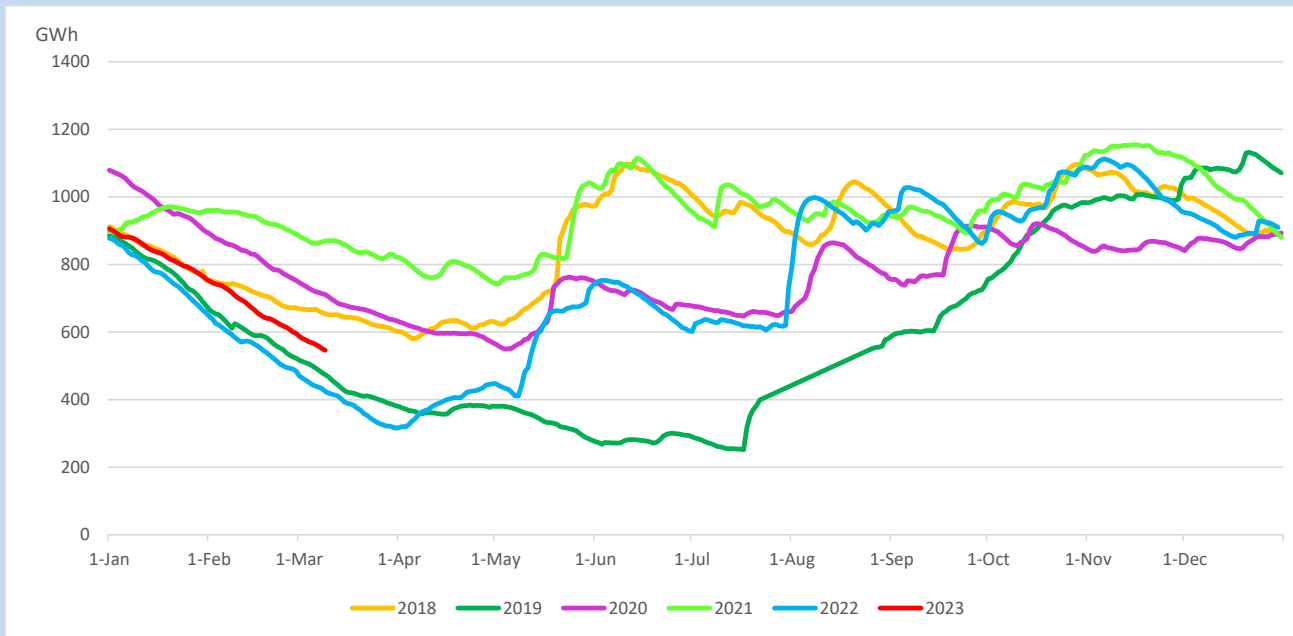
## Reservoir Levels -

as at 06.00 Hr on March 11, 2023

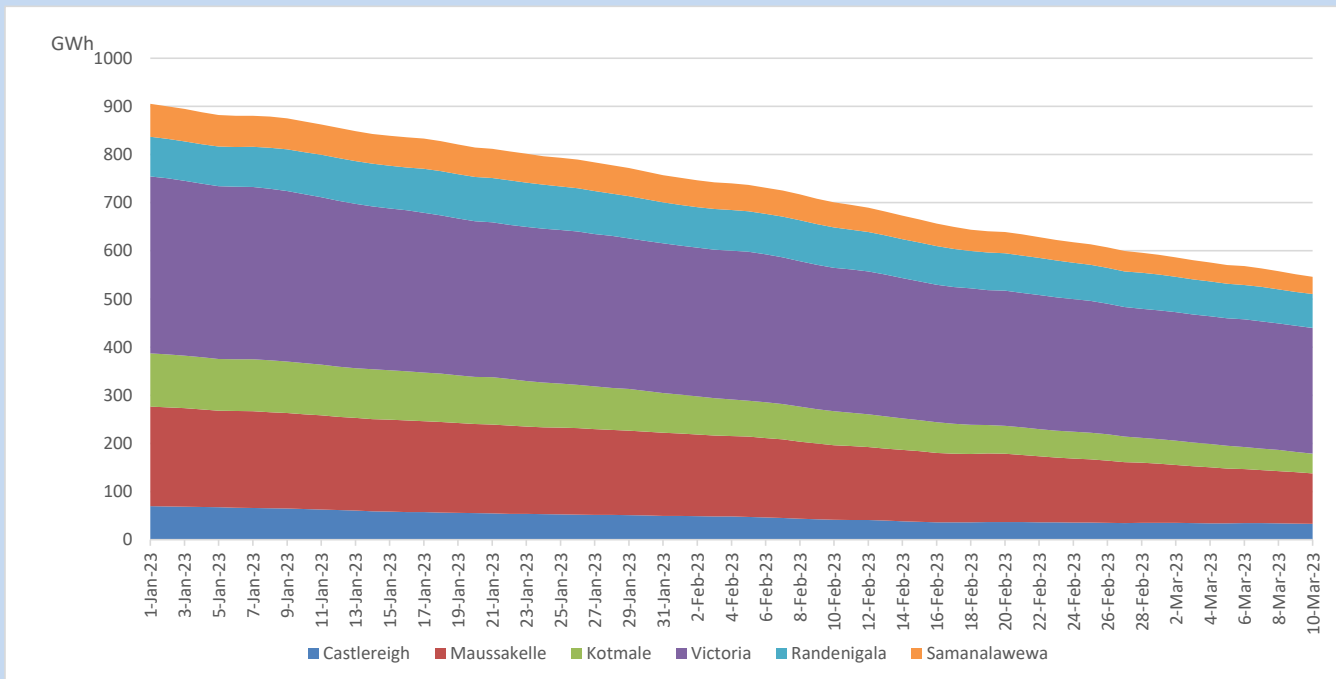


Total Reservoir Level	546 GWh
% of Total capacity	45.3%

## Comparison of Total Reservoir Storage Levels with Past Years

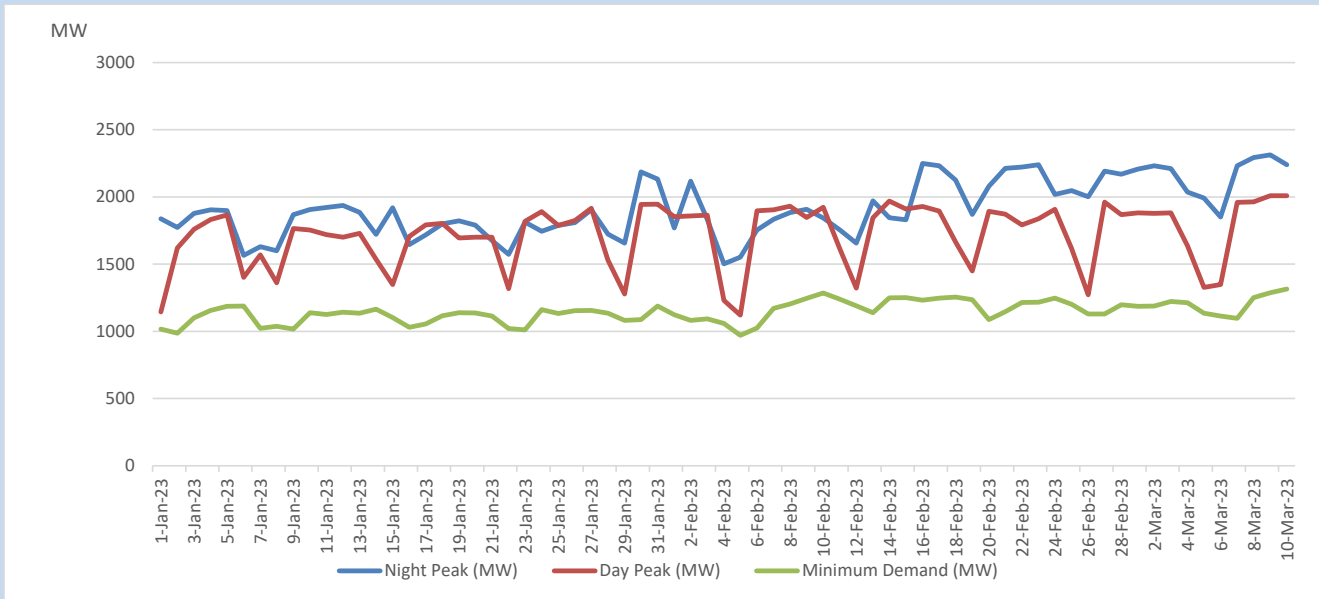


## Variation of Major Hydro Reservoir Levels in the current year (GWh)





## Variation of Demand during the current year

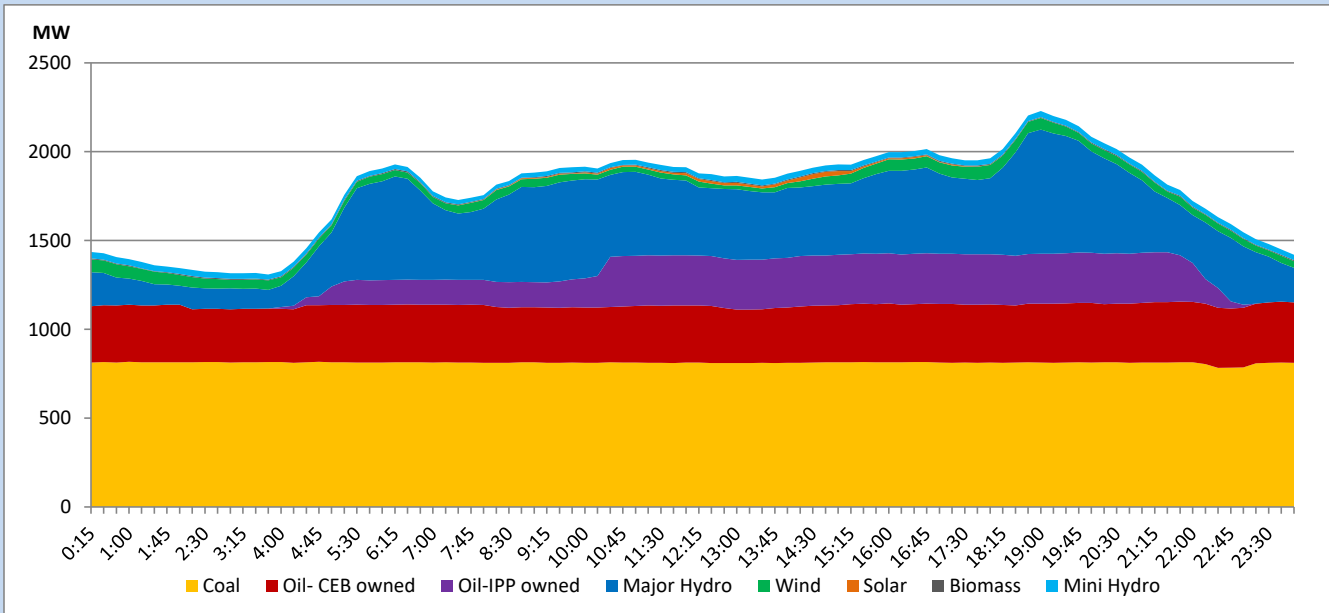


The above figures are excluding contribution from roof top solar, non telemetered solar and mini hydro plants

## Daily Load Curve

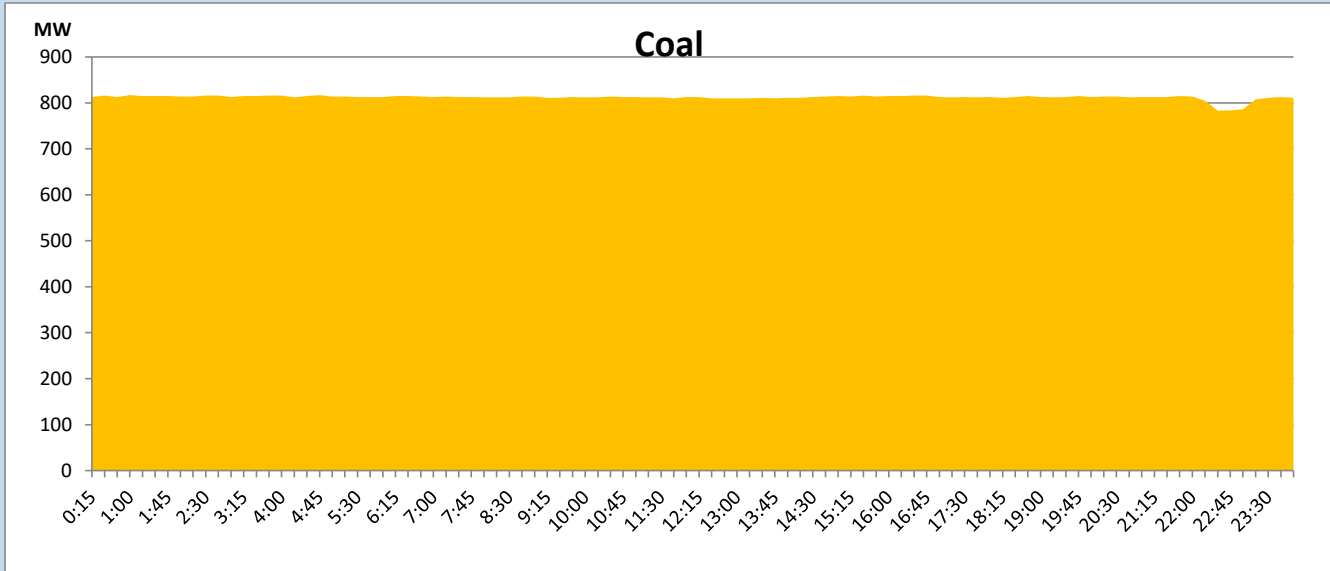
March 10, 2023

Solar and wind data is based on Telemetered Power Stations only



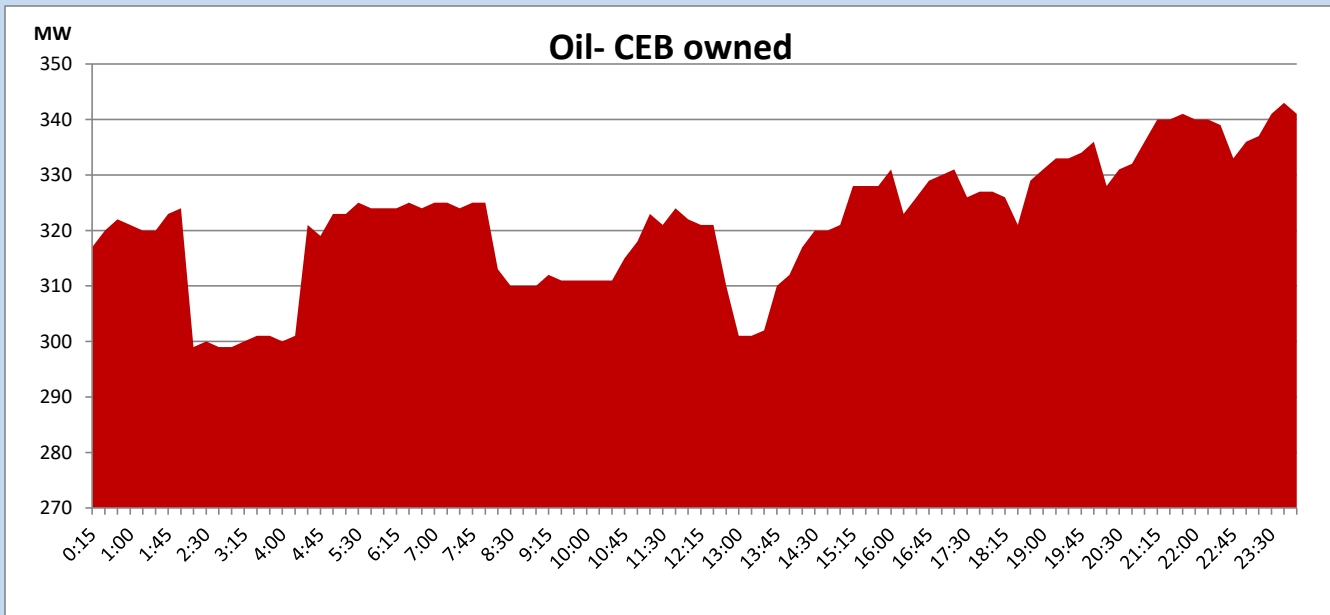
## Coal Generation during

March 10, 2023



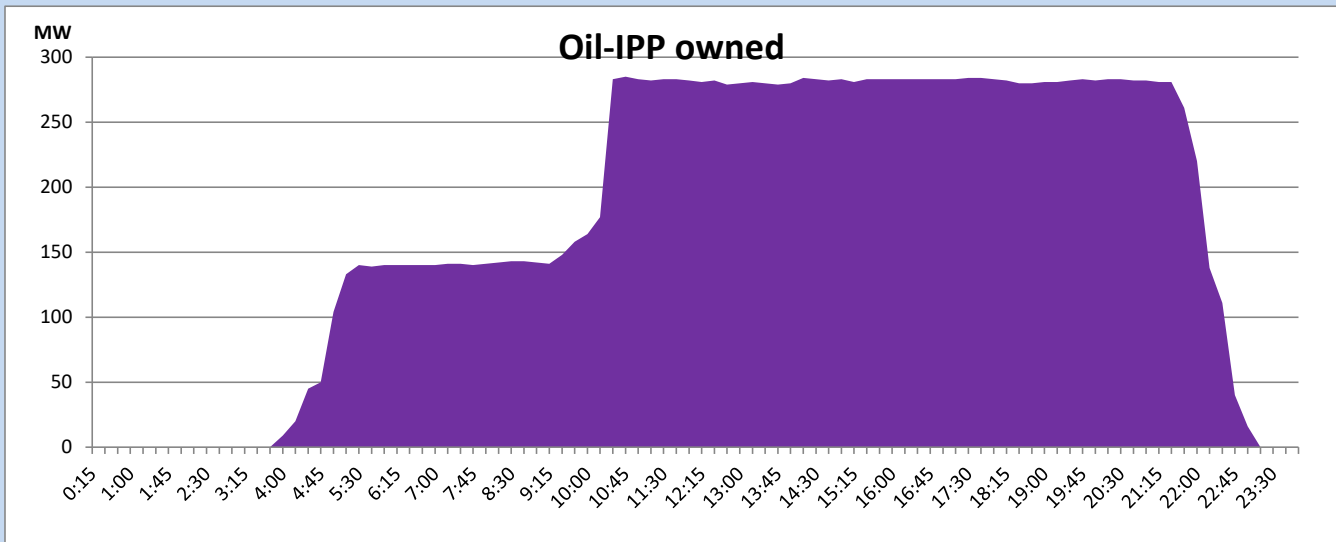
## CEB Oil Plant Generation during

March 10, 2023



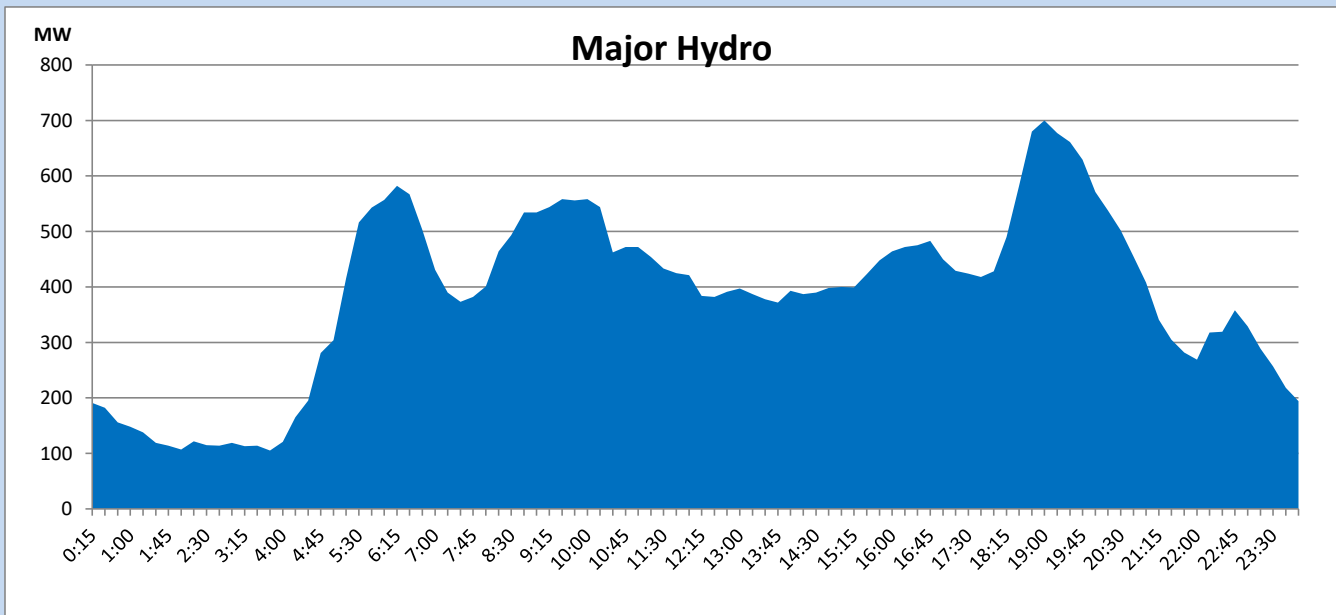
## IPP Oil Plant Generation during

March 10, 2023



## Major Hydro Generation during

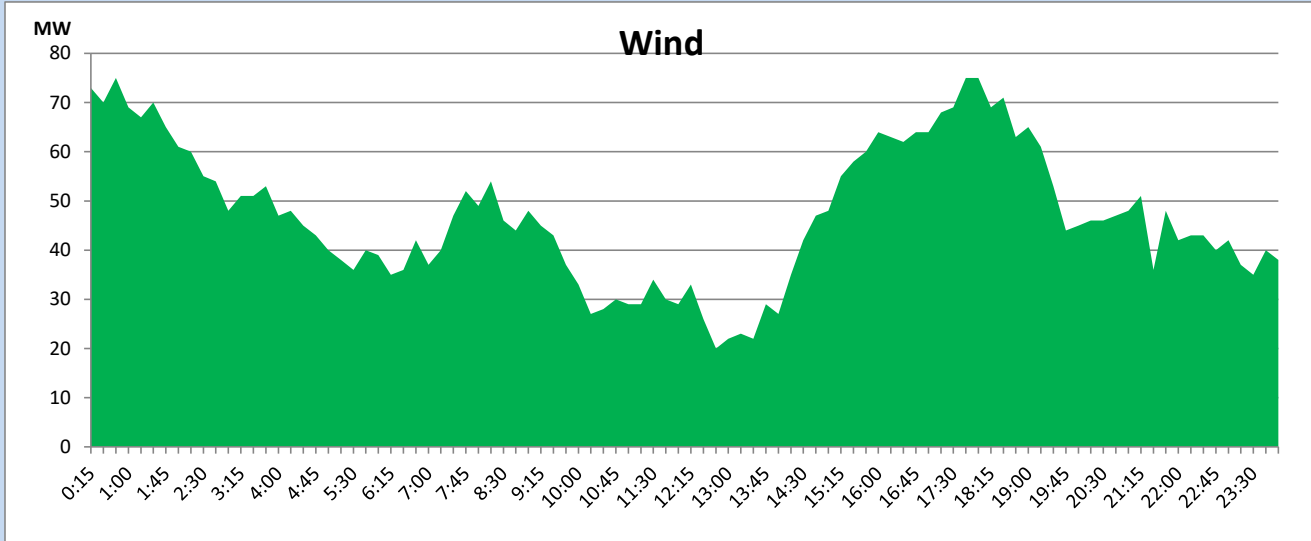
March 10, 2023



## Wind Generation during

March 10, 2023

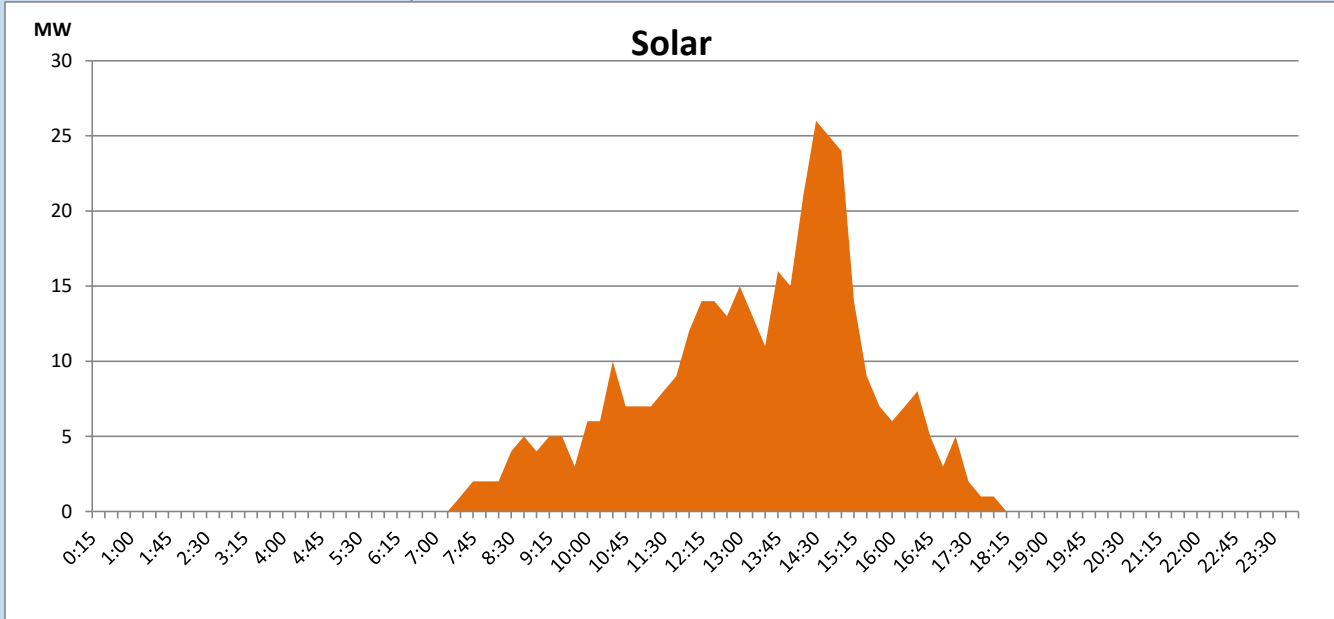
Based on Telemetered Power Stations only



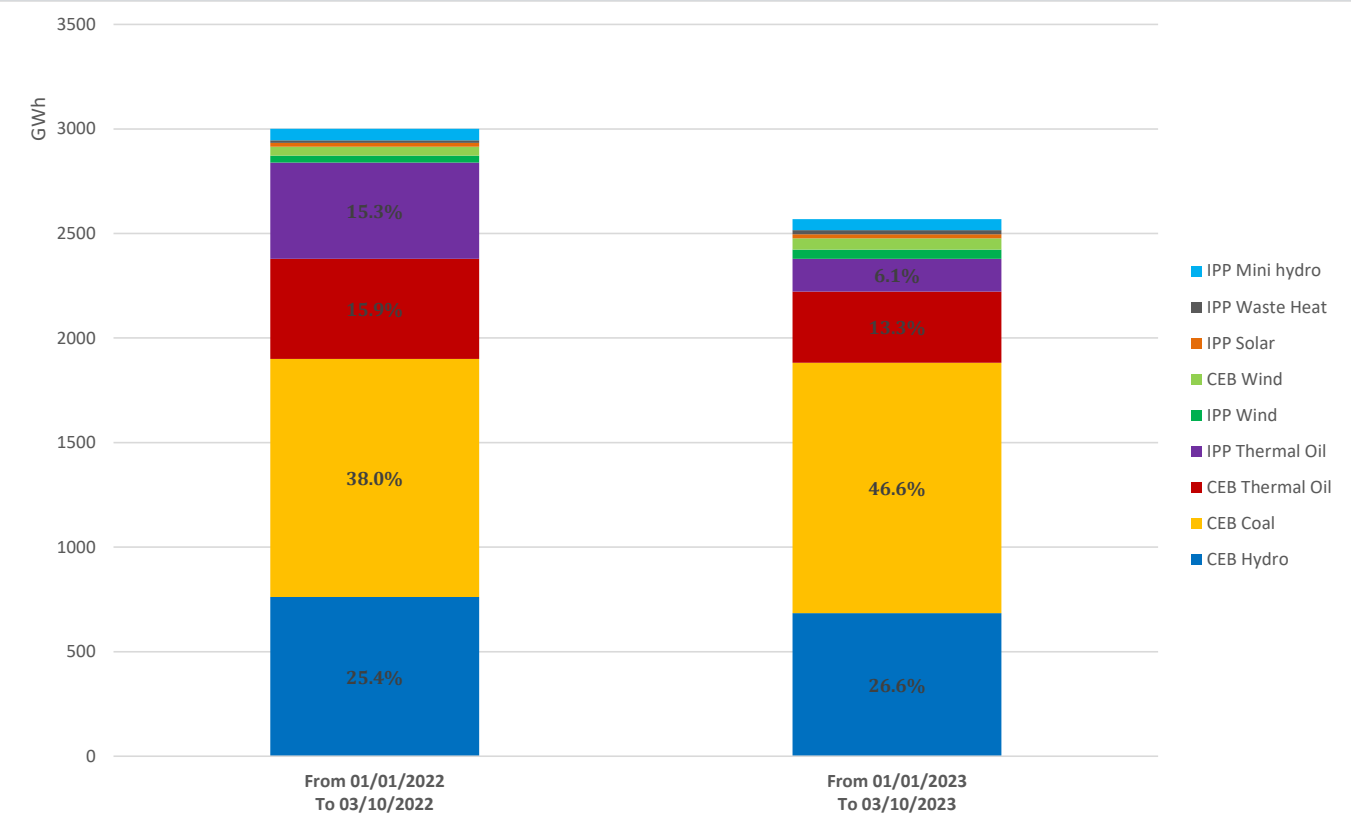
## Solar Generation during

March 10, 2023

Based on Telemetered Power Stations only



# Cumulative Dispatch Comparison with Last Year



### Thermal Plant Fuel types

Power Station	Primary Fuel
CEB Thermal	
Sapugaskanda 1	Heavy Fuel
Sapugaskanda 2	Heavy Fuel
Kelanitissa Small Gas Turbines	Auto Diesel
GT 7 - Kelanitissa	Auto Diesel
Kelanitissa CCY	Naphtha or Diesel
Lakvijaya 1	Coal
Lakvijaya 2	Coal
Lakvijaya 3	Coal
Uthuru Janani	Heavy Fuel
Barge CEB	Heavy Fuel

Power Station	Primary Fuel
Private Thermal	
West Coast	Auto Diesel / Heavy Fuel

### Major Incidents reported during the day

March 10, 2023

1). Null.