

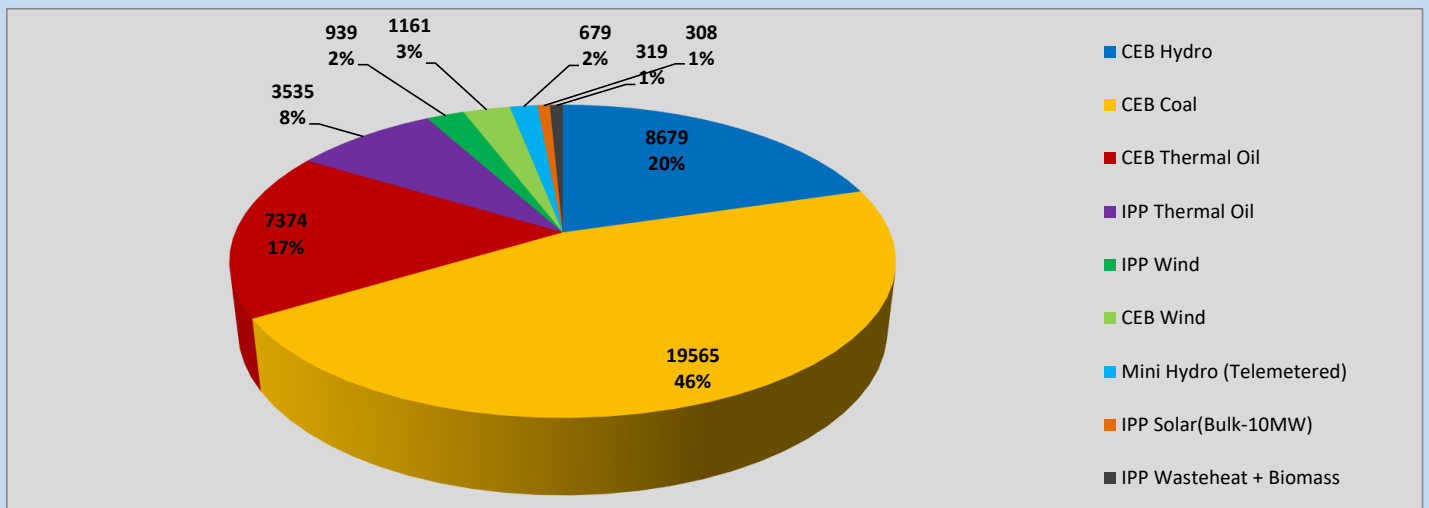
Generation and Reservoirs Statistics

March 9, 2023



PUBLIC UTILITIES COMMISSION OF SRI LANKA

Daily Generation Mix in MWh



Total Generation (Excluding estimated figures) =



42,559 MWh

Estimated figures of CEB generation report

Estimated unserved energy = 0.00 GWh
 Estimated Mini Hydro (Non telemetered) = 631 MWh
 Estimated IPP Solar PV (Bulk 1-10MW) = 304 MWh
 Estimated Solar Roof Top PV = 1490 MWh

Cumulative Dispatch

Following data excludes the contribution from roof top solar, non telemetered solar and mini hydro plants

For Current Month

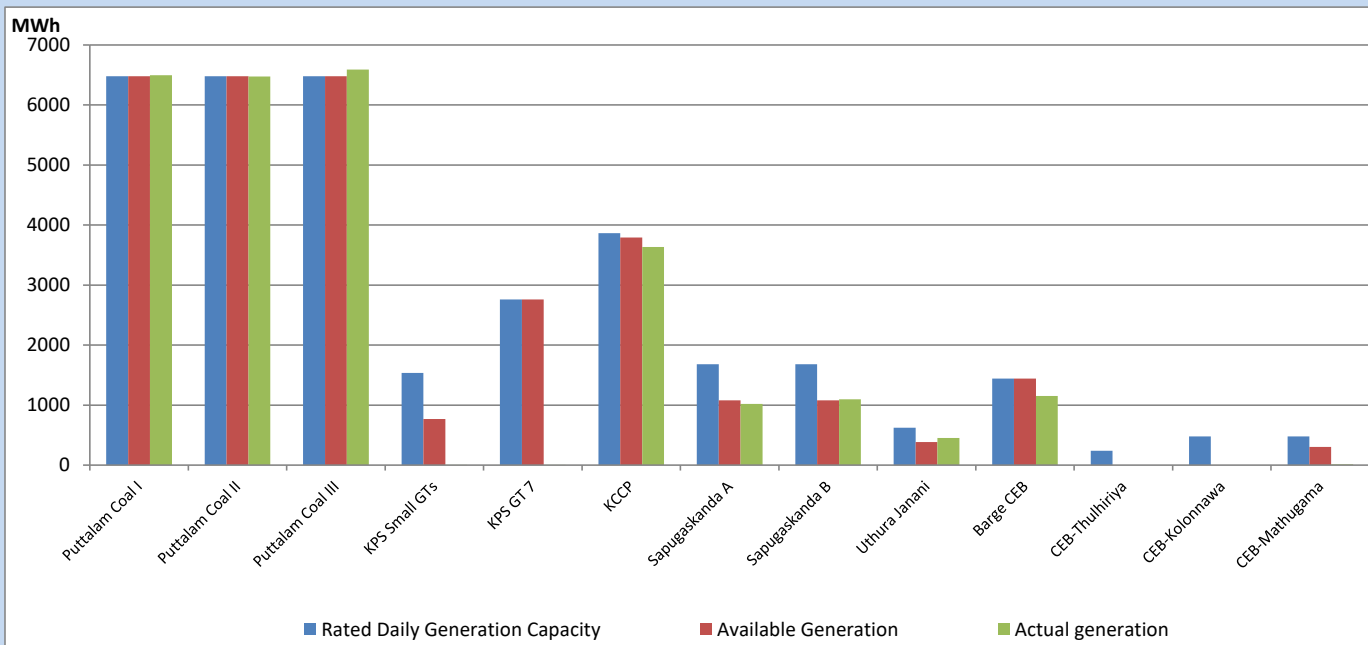
Category	Dispatch (GWh)	
CEB Hydro	73	20.89%
CEB Coal	174	49.73%
CEB Thermal Oil	56	16.08%
IPP Thermal	21	5.88%
SPP Wind	6	1.83%
CEB Wind	8	2.36%
Mini Hydro (Telemetered)	6	1.82%
IPP Solar(Bulk-10MW)	2	0.69%
IPP Wasteheat + BMP	2	0.71%
Total	350	

For Current Year

Category	Dispatch (GWh)	
CEB Hydro	674	26.70%
CEB Coal	1,178	46.65%
CEB Thermal Oil	333	13.20%
IPP Thermal	152	6.00%
SPP Wind	44	1.76%
CEB Wind	53	2.09%
Mini Hydro (Telemetered)	52	2.07%
IPP Solar(Bulk-10MW)	19	0.75%
IPP Wasteheat	20	0.78%
Total	2,526	

CEB owned Thermal Plant Dispatch

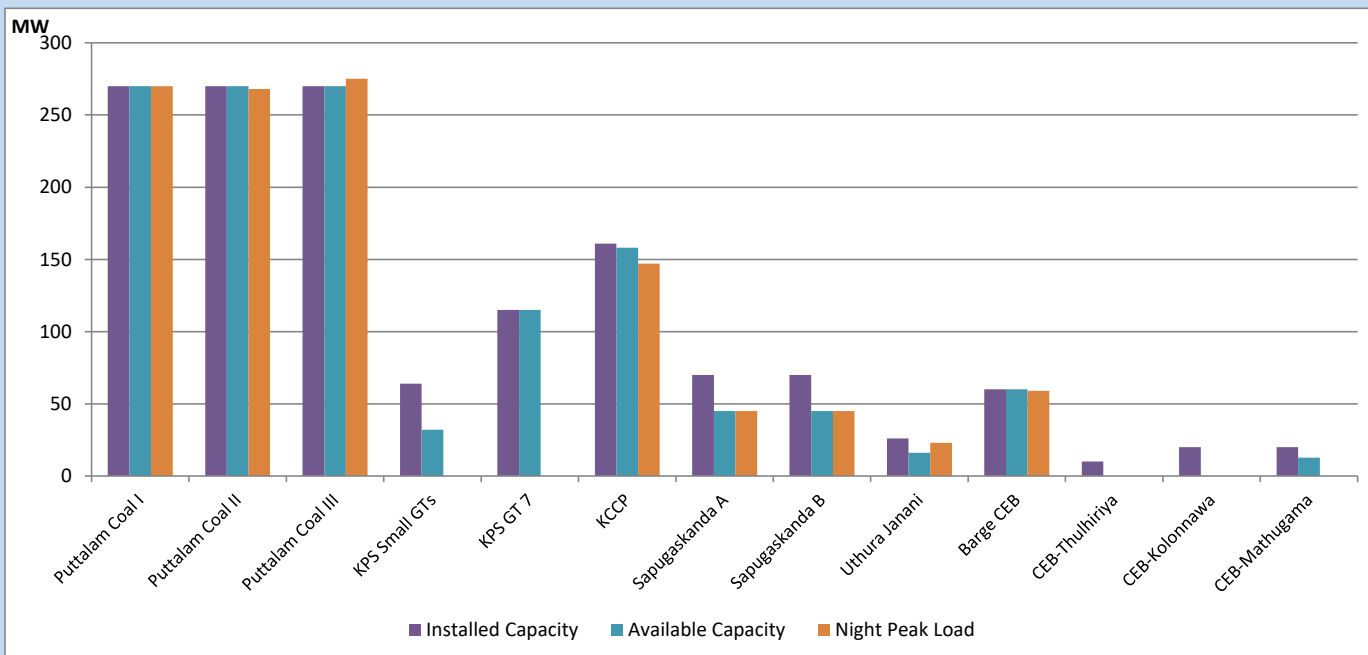
March 9, 2023



Available Generation is estimated based on plant availability at 6.00am on

March 10, 2023

CEB owned Thermal Plant Loading at the Night Peak

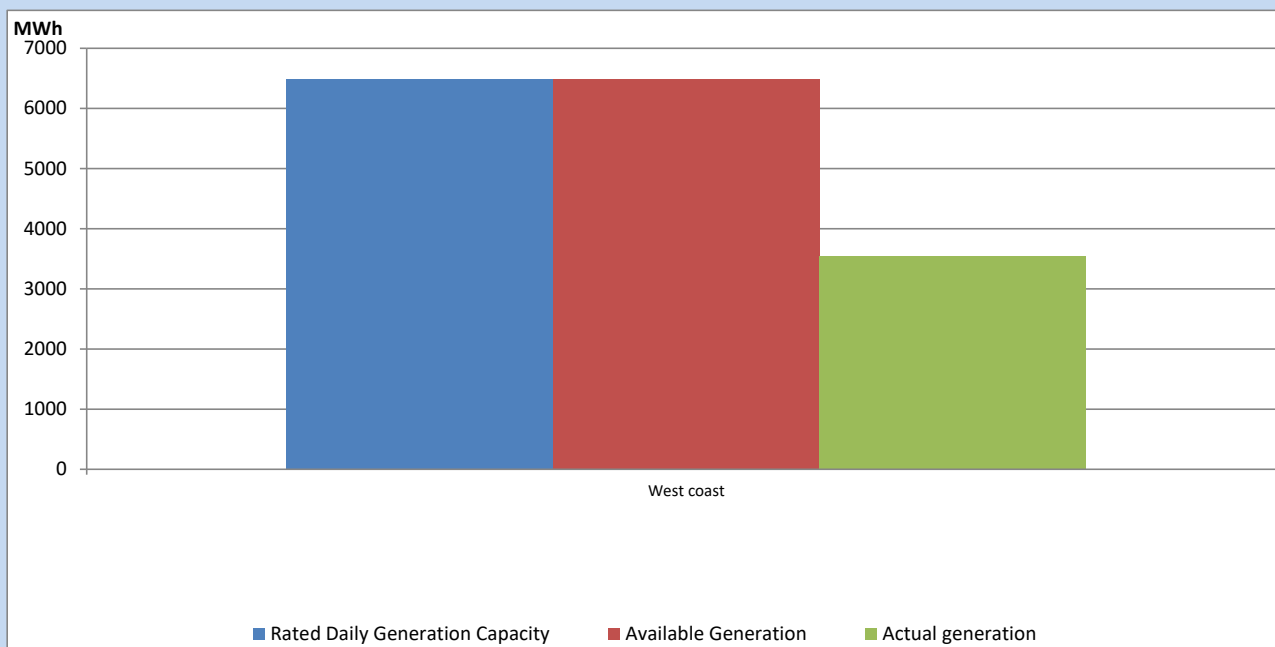


Note- Plant availability is recorded at 6.00 am on

March 10, 2023

IPP owned Thermal Plant Dispatch

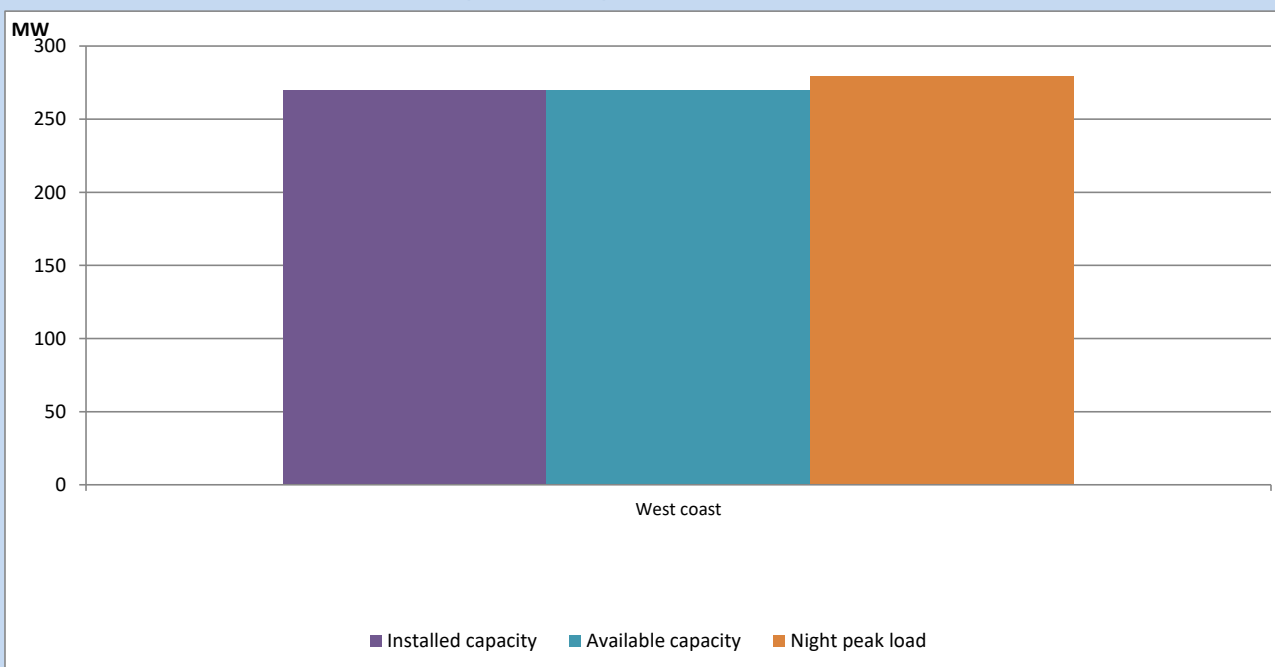
March 9, 2023



Available Generation is estimated based on plant availability at 6.00am on

March 10, 2023

IPP owned Thermal Plant Loading at the Night Peak

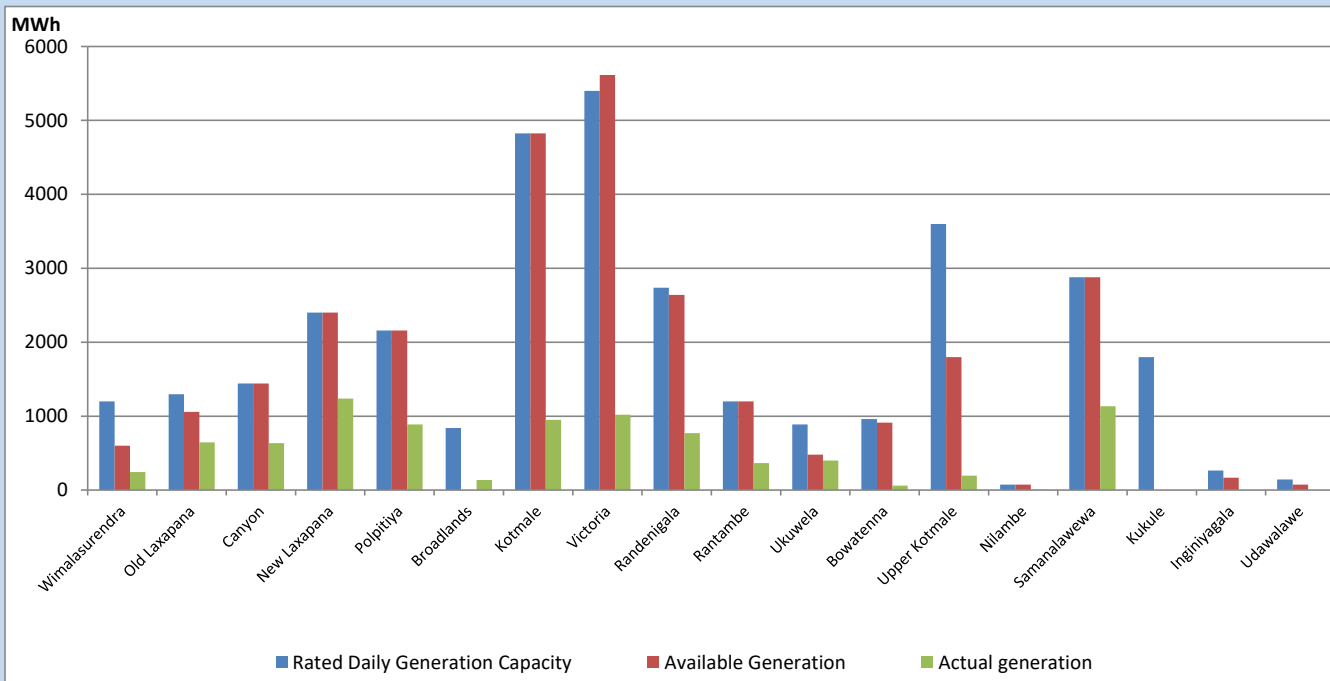


Note- Plant availability is recorded at 6.00 am on

March 10, 2023

Major Hydro Plant Dispatch

March 9, 2023

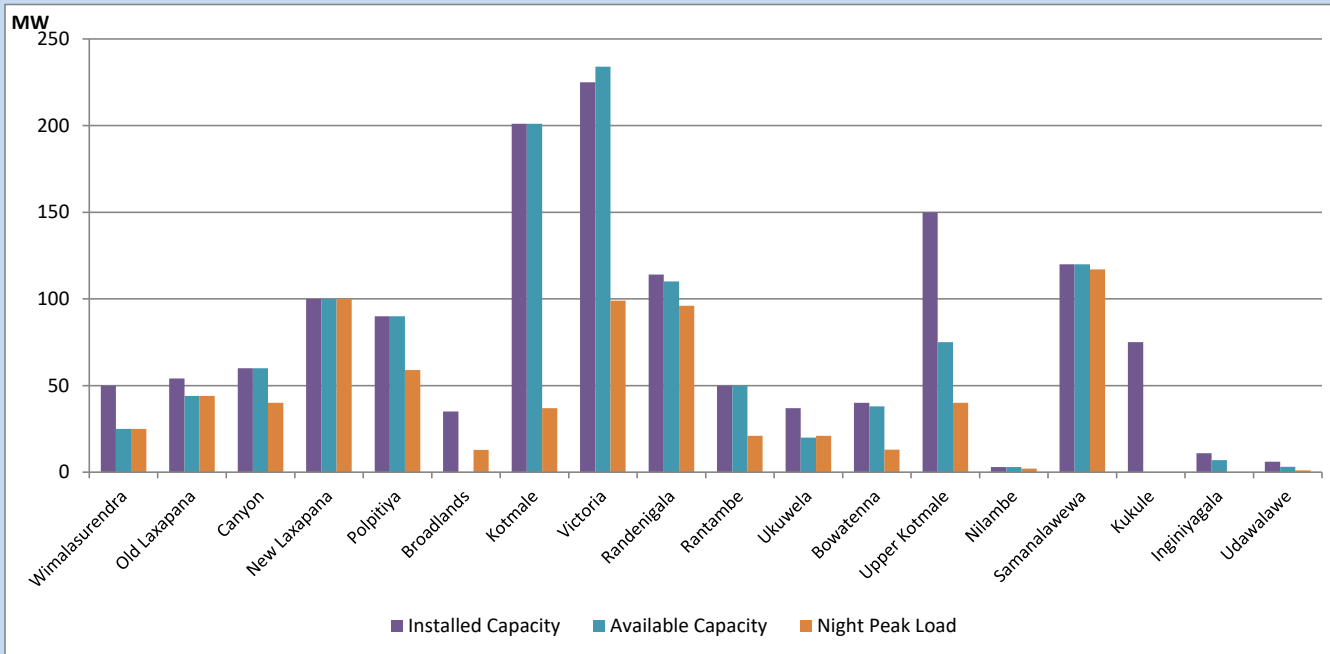


Available Generation is estimated based on plant availability at 6.00am on
Broadlands power plant is operating in the Commissioning Stage

March 10, 2023

Major Hydro Plant Loading at Night Peak

March 9, 2023



Note- Plant availability is recorded at 6.00 am on
Broadlands power plant is operating in the Commissioning Stage

March 10, 2023

Summary of Major Plant performance

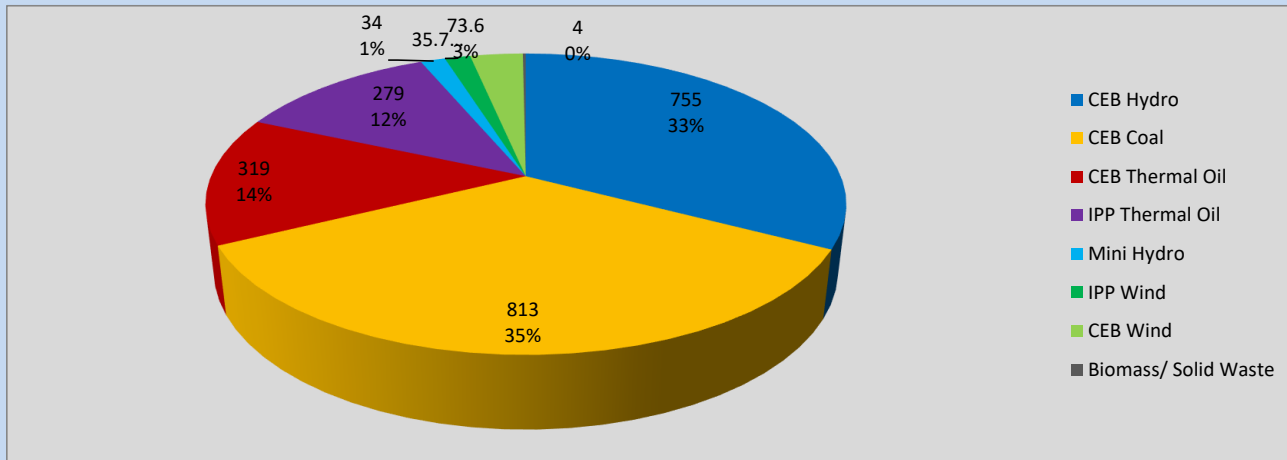
Plant	Installed Capacity	Plant Availability	Night peak Load	Plant Dispatch
	(MW)	(MW)	(MW)	(MWh)
Wimalasurendra	50	25	25	242
Old Laxapana	54	44	44	645
Canyon	60	60	40	636
New Laxapana	100	100	100	1,236
Polpitiya	90	90	59	887
Broadlands	35	0	13	136
Kotmale	201	201	37	950
Victoria	225	234	99	1,020
Randenigala	114	110	96	771
Rantambe	50	50	21	366
Ukuwela	37	20	21	398
Bowatenna	40	38	13	61
Upper Kotmale	150	75	40	194
Nilambe	3	3	2	5
Samanalawewa	120	120	117	1,132
Kukule	75	0	0	0
Inginiyagala	11	7	0	0
Udawalawe	6	3	1	0
Puttalam Coal I	270	270	270	6,498
Puttalam Coal II	270	270	268	6,477
Puttalam Coal III	270	270	275	6,590
KPS Small GTs	64	32	0	2
KPS GT 7	115	115	0	3
KCCP	161	158	147	3,634
Sapugaskanda A	70	45	45	1,020
Sapugaskanda B	70	45	45	1,095
Uthura Janani	26	16	23	454
Barge CEB	60	60	59	1,153
CEB-Thulhiriya	10	0	0	0
CEB-Kolonnawa	20	0	0	0
CEB-Mathugama	20	13	0	13
ACE Matara	24	0	0	0
Asia Power	50	0	0	0
Sojitz Kelanitissa	163	0	0	0
West Coast	270	270	279	3,535
Nothern Power	36	0	0	0
ACE Embilipitiya	93	0	0	0
Total	3,483	2,744	2,287	42,559

Plant availability is the availability recorded at 6 am on

March 10, 2023

Contribution to the Night Peak in MW

March 9, 2023

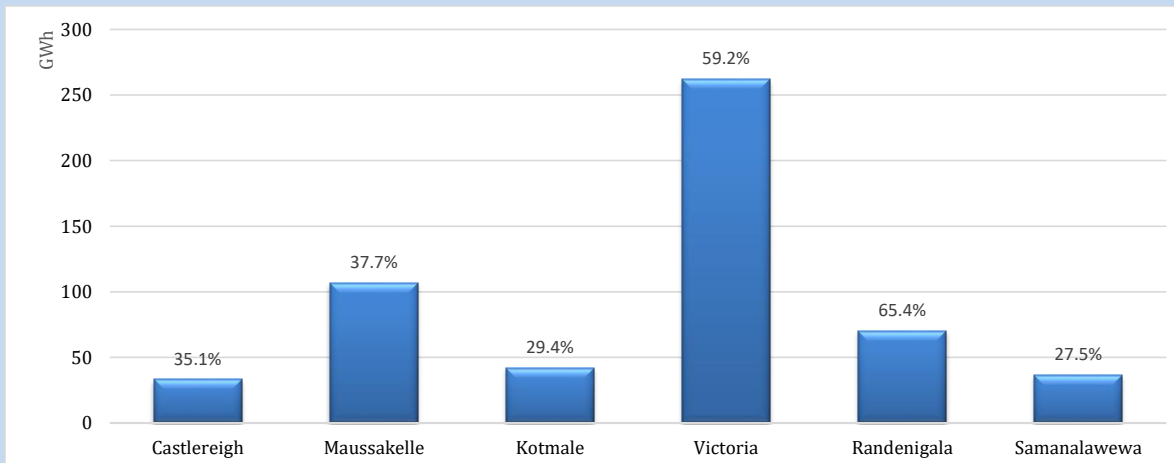


Night Peak*	2,314 MW
Day Peak	2,010 MW
Minimum Demand	1,288 MW

Above figures are excluding contribution from roof top solar, non telemetered solar and mini hydro plants

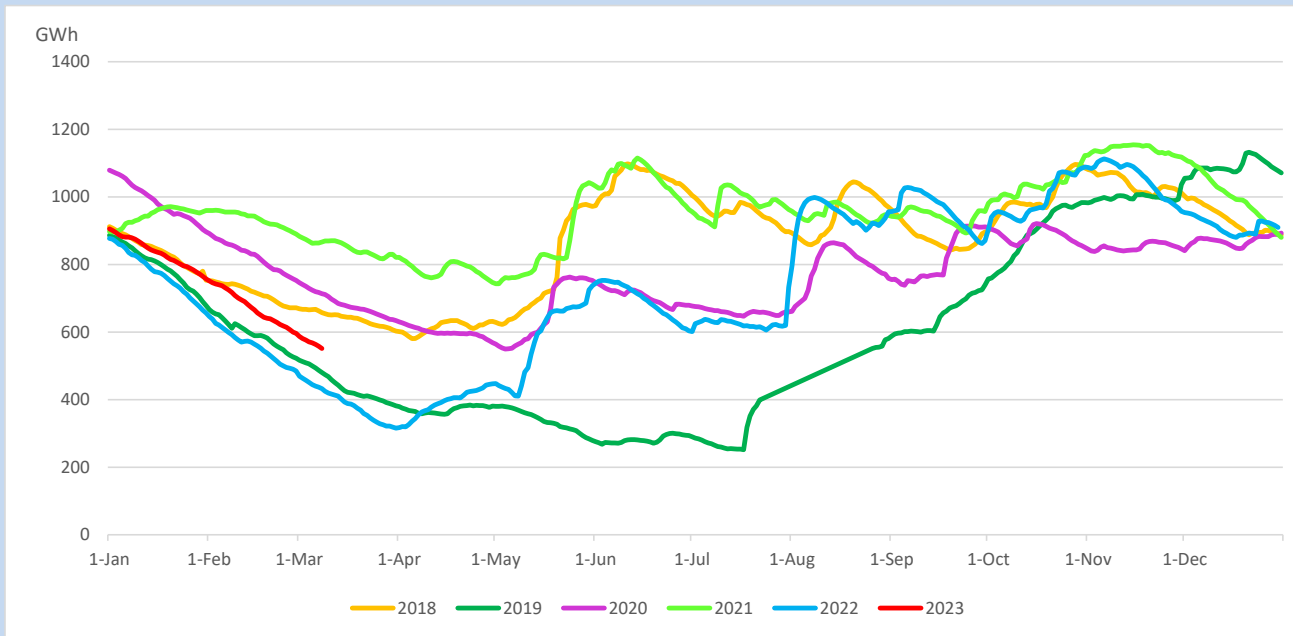
Reservoir Levels -

as at 06.00 Hr on March 10, 2023

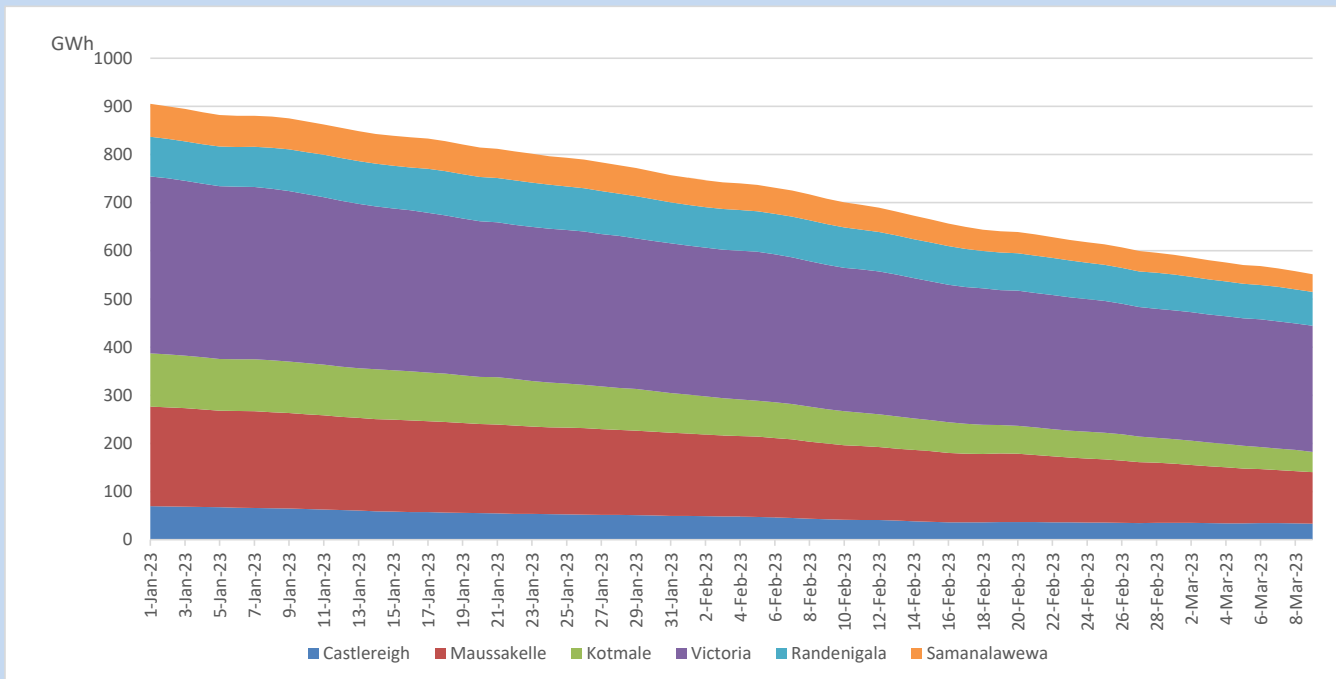


Total Reservoir Level	551.3 GWh
% of Total capacity	45.8%

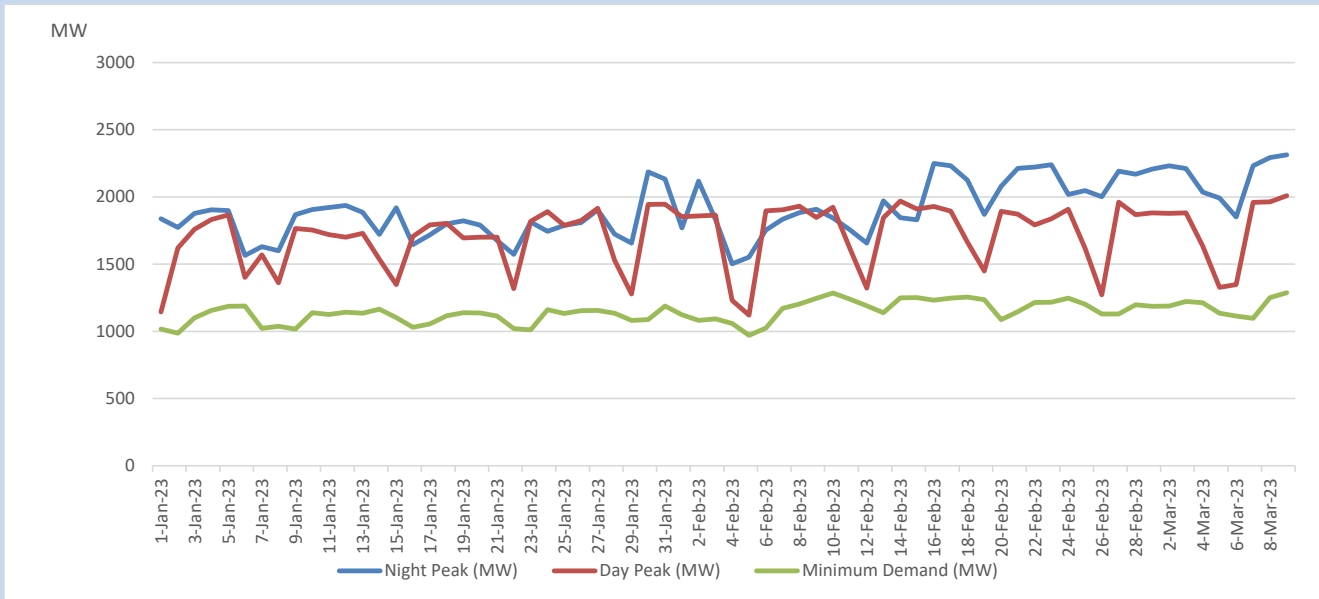
Comparison of Total Reservoir Storage Levels with Past Years



Variation of Major Hydro Reservoir Levels in the current year (GWh)



Variation of Demand during the current year

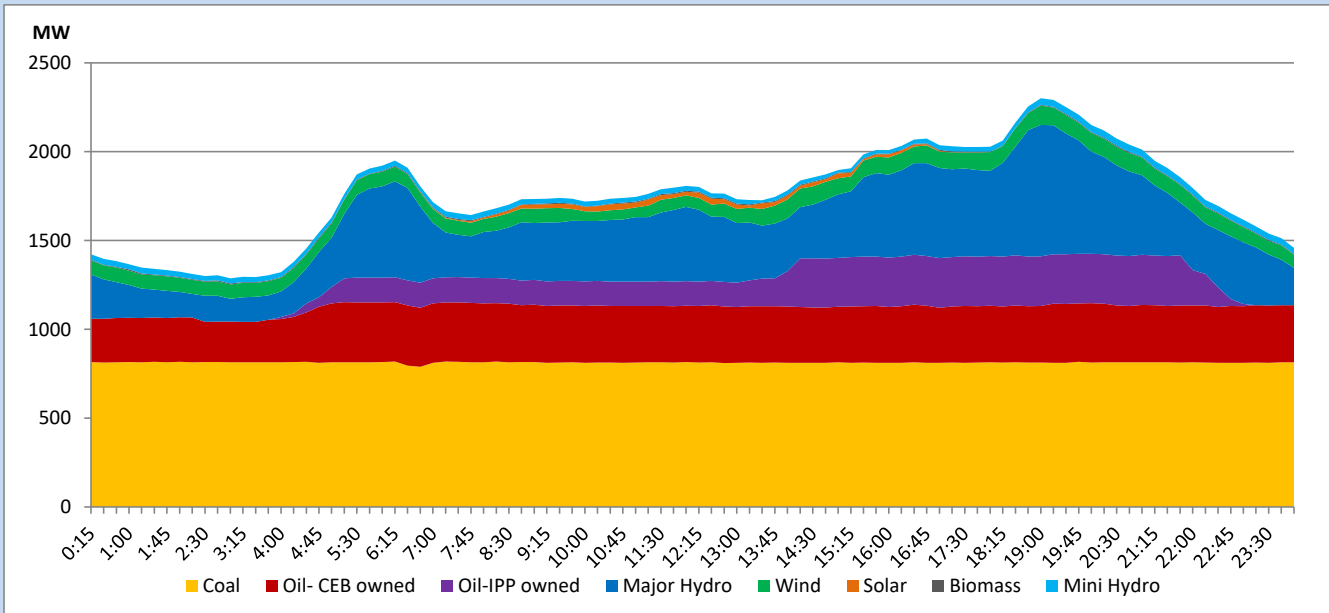


The above figures are excluding contribution from roof top solar, non telemetered solar and mini hydro plants

Daily Load Curve

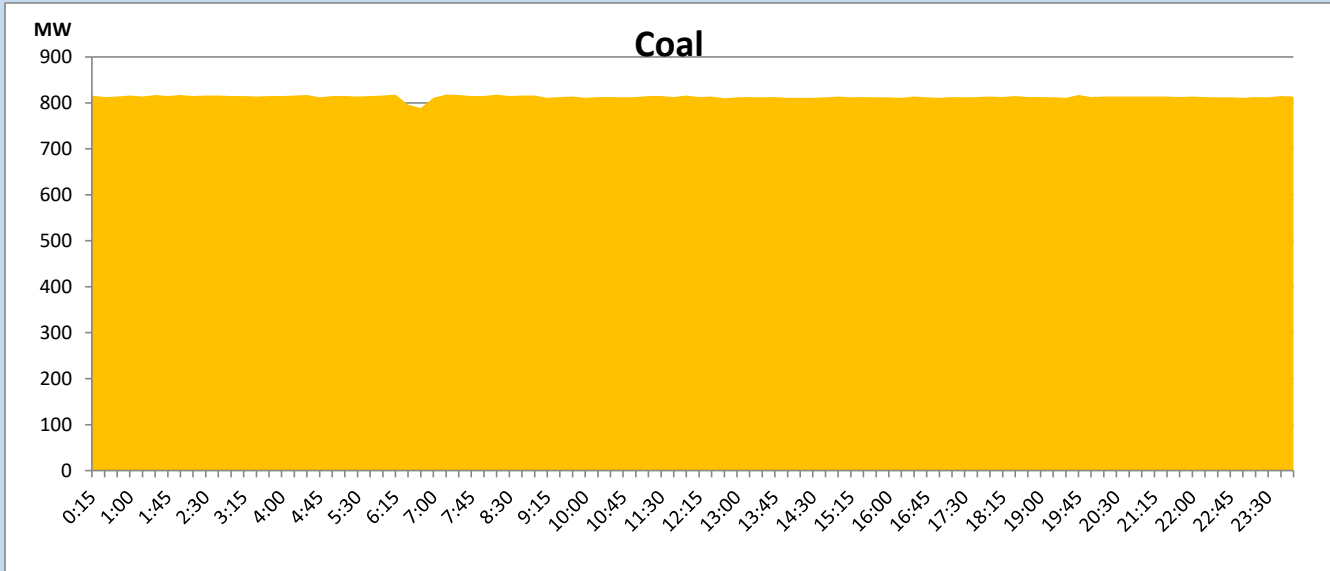
March 9, 2023

Solar and wind data is based on Telemetered Power Stations only



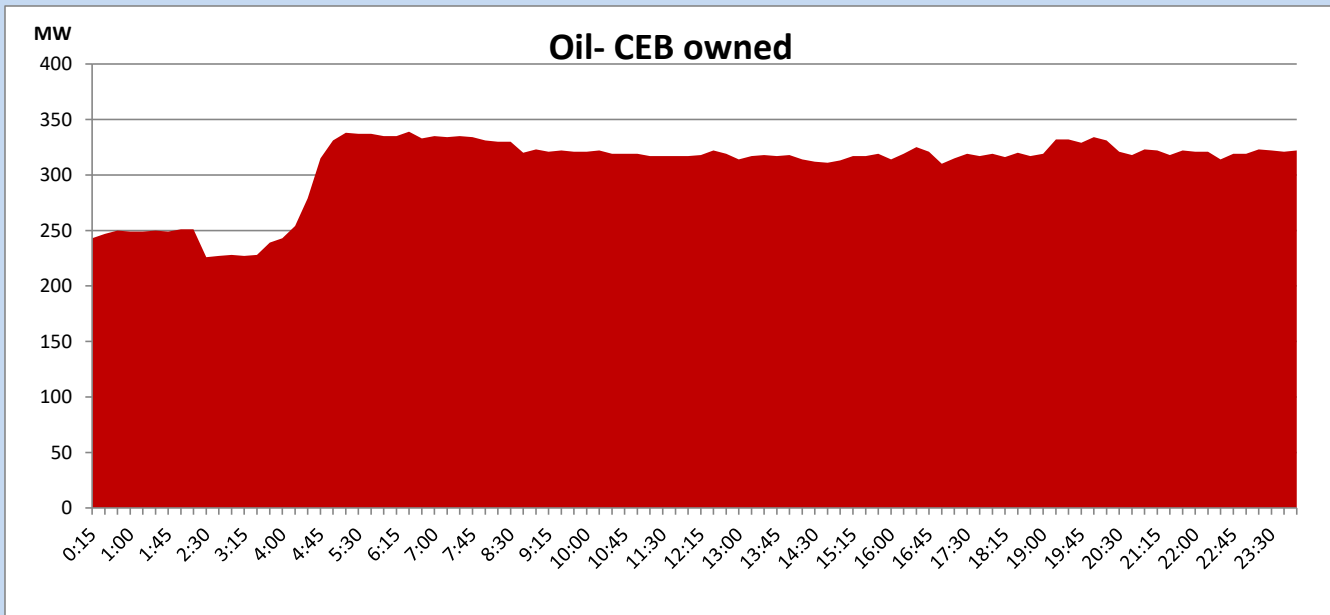
Coal Generation during

March 9, 2023



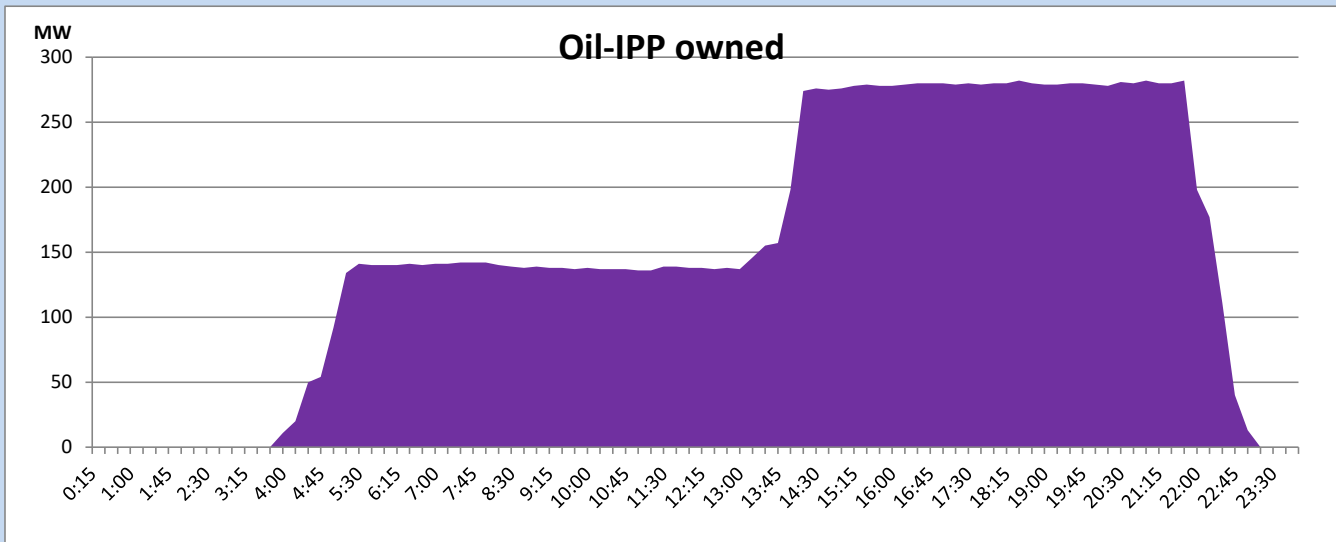
CEB Oil Plant Generation during

March 9, 2023



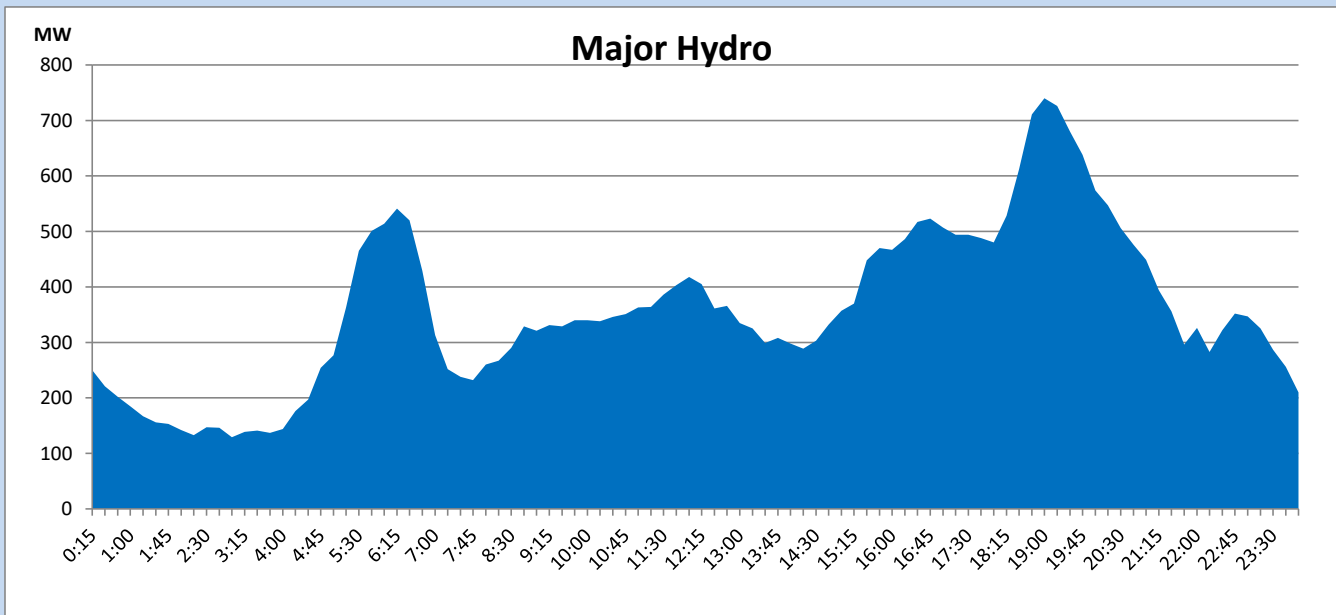
IPP Oil Plant Generation during

March 9, 2023



Major Hydro Generation during

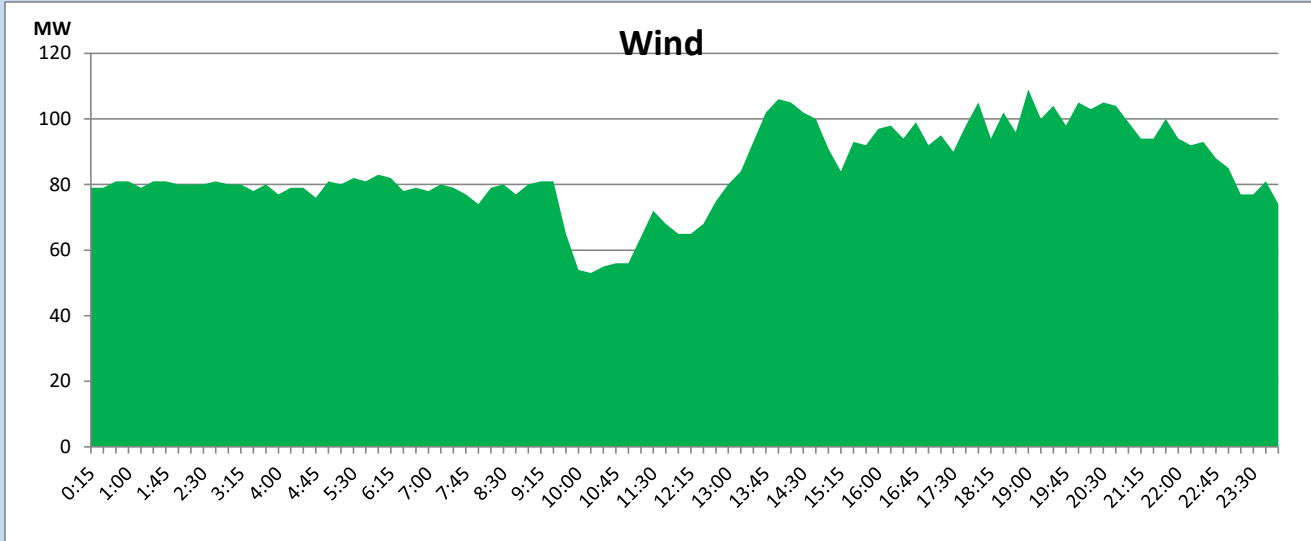
March 9, 2023



Wind Generation during

March 9, 2023

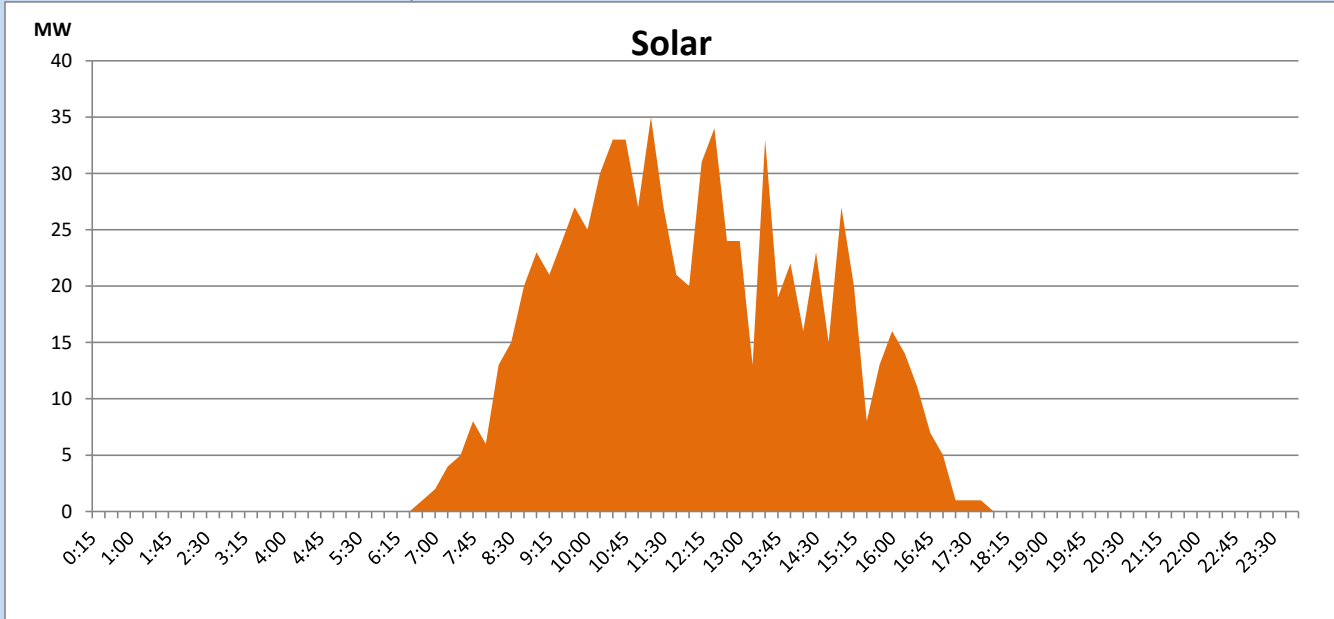
Based on Telemetered Power Stations only



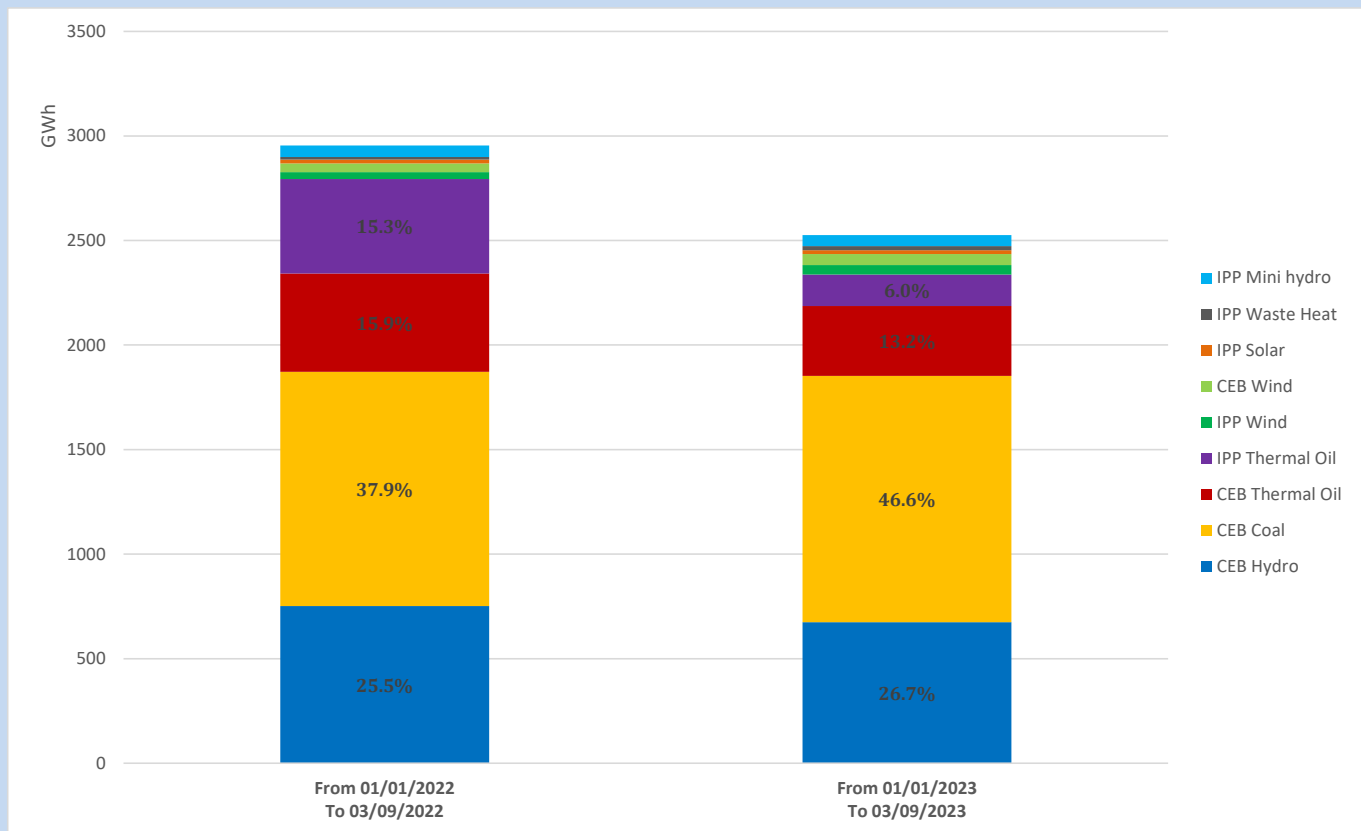
Solar Generation during

March 9, 2023

Based on Telemetered Power Stations only



Cumulative Dispatch Comparison with Last Year



Thermal Plant Fuel types

Power Station	Primary Fuel
CEB Thermal	
Sapugaskanda 1	Heavy Fuel
Sapugaskanda 2	Heavy Fuel
Kelanitissa Small Gas Turbines	Auto Diesel
GT 7 - Kelanitissa	Auto Diesel
Kelanitissa CCY	Naphtha or Diesel
Lakvijaya 1	Coal
Lakvijaya 2	Coal
Lakvijaya 3	Coal
Uthuru Janani	Heavy Fuel
Barge CEB	Heavy Fuel

Power Station	Primary Fuel
Private Thermal	
West Coast	Auto Diesel / Heavy Fuel

Major Incidents reported during the day

March 9, 2023

1). Hambantota 33kV B/S 02 was tripped at 11:01hrs due to the operation of O/C and E/F protection causing 33kV feeders 1-8 to be dead (132/33 kV T/F 01 & 02 and 132kV B/B were released for maintenance). 33kV B/S and all affected feeders were normalized by 11:28hrs.