

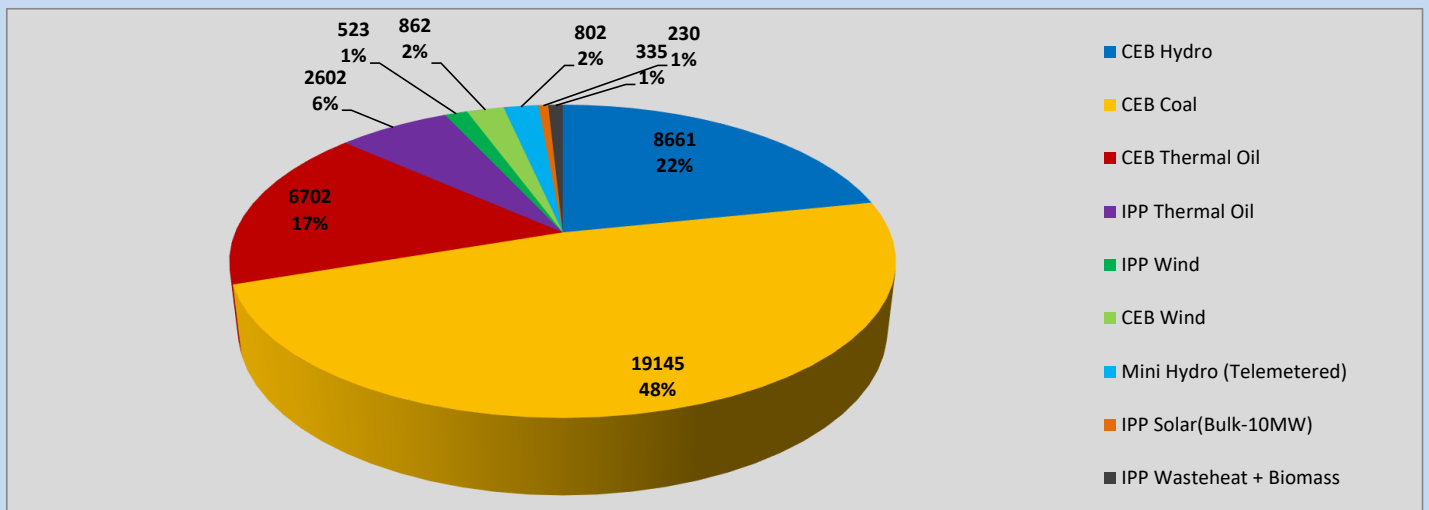
# Generation and Reservoirs Statistics

March 7, 2023



PUBLIC UTILITIES COMMISSION OF SRI LANKA

## Daily Generation Mix in MWh



Total Generation (Excluding estimated figures) =



**39,862 MWh**

### Estimated figures of CEB generation report

Estimated unserved energy = 0.00 GWh  
 Estimated Mini Hydro (Non telemetered) = 508 MWh  
 Estimated IPP Solar PV (Bulk 1-10MW) = 304 MWh  
 Estimated Solar Roof Top PV = 1490 MWh

## Cumulative Dispatch

Following data excludes the contribution from roof top solar, non telemetered solar and mini hydro plants

### For Current Month

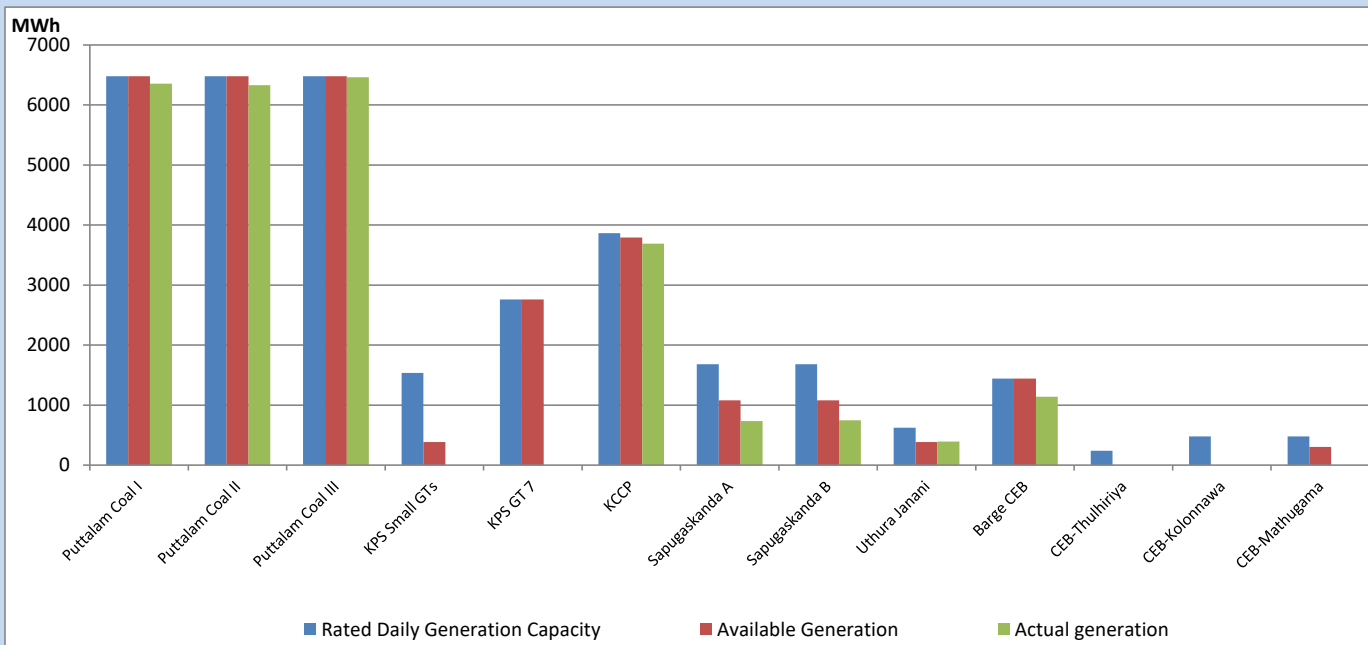
Category	Dispatch (GWh)	
CEB Hydro	56	21.13%
CEB Coal	135	50.78%
CEB Thermal Oil	42	15.77%
IPP Thermal	14	5.09%
SPP Wind	5	1.75%
CEB Wind	6	2.26%
Mini Hydro (Telemetered)	5	1.84%
IPP Solar (Bulk-10MW)	2	0.66%
IPP Wasteheat + BMP	2	0.71%
<b>Total</b>	<b>266</b>	

### For Current Year

Category	Dispatch (GWh)	
CEB Hydro	658	26.93%
CEB Coal	1,139	46.65%
CEB Thermal Oil	319	13.06%
IPP Thermal	145	5.92%
SPP Wind	43	1.75%
CEB Wind	50	2.07%
Mini Hydro (Telemetered)	51	2.09%
IPP Solar (Bulk-10MW)	18	0.75%
IPP Wasteheat	19	0.78%
<b>Total</b>	<b>2,442</b>	

## CEB owned Thermal Plant Dispatch

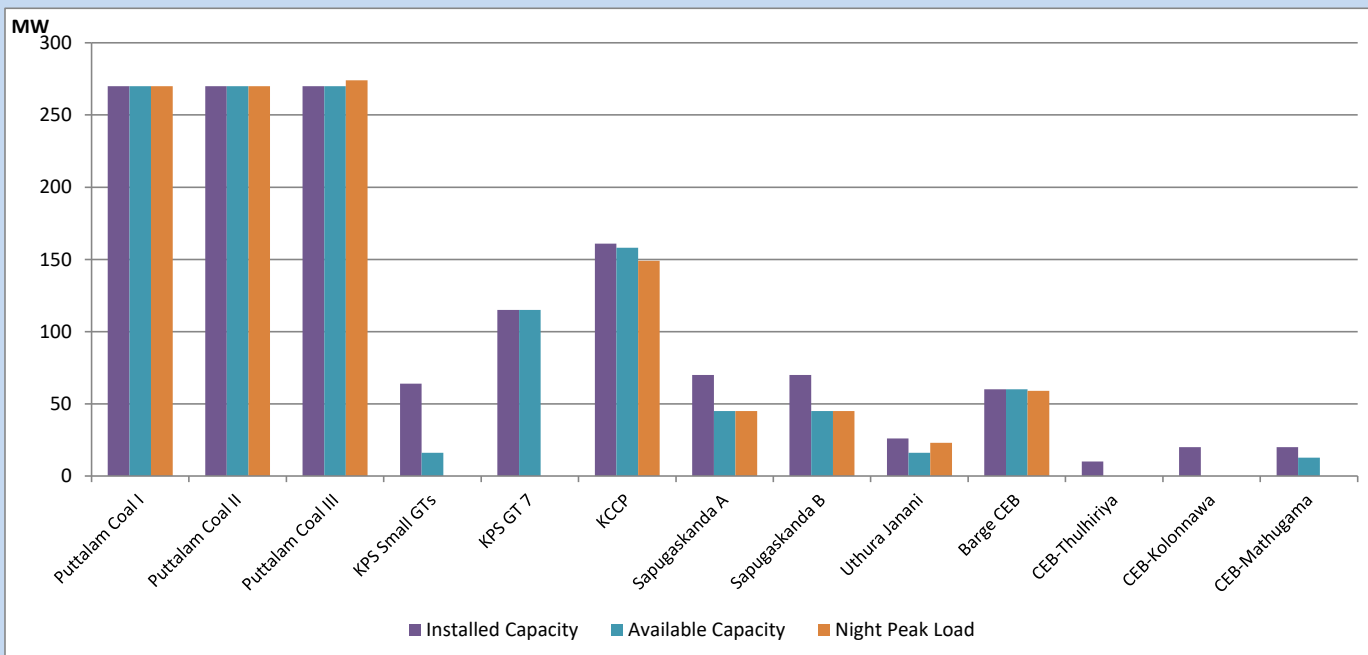
March 7, 2023



Available Generation is estimated based on plant availability at 6.00am on

March 8, 2023

## CEB owned Thermal Plant Loading at the Night Peak

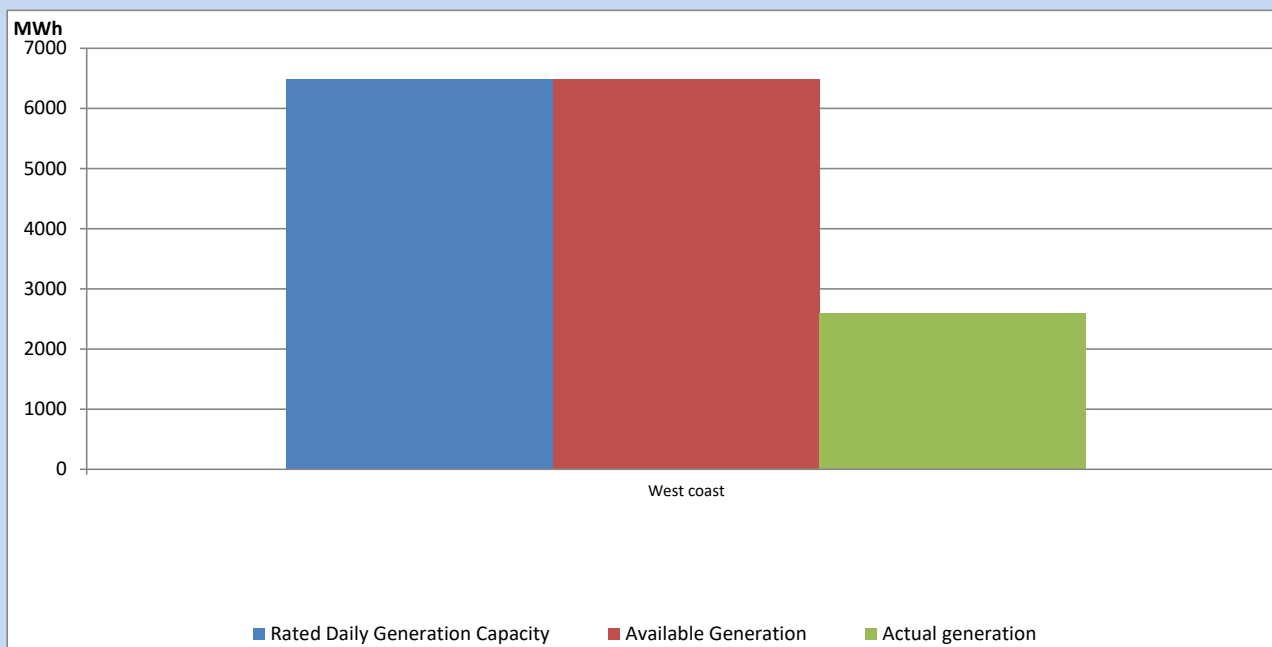


Note- Plant availability is recorded at 6.00 am on

March 8, 2023

## IPP owned Thermal Plant Dispatch

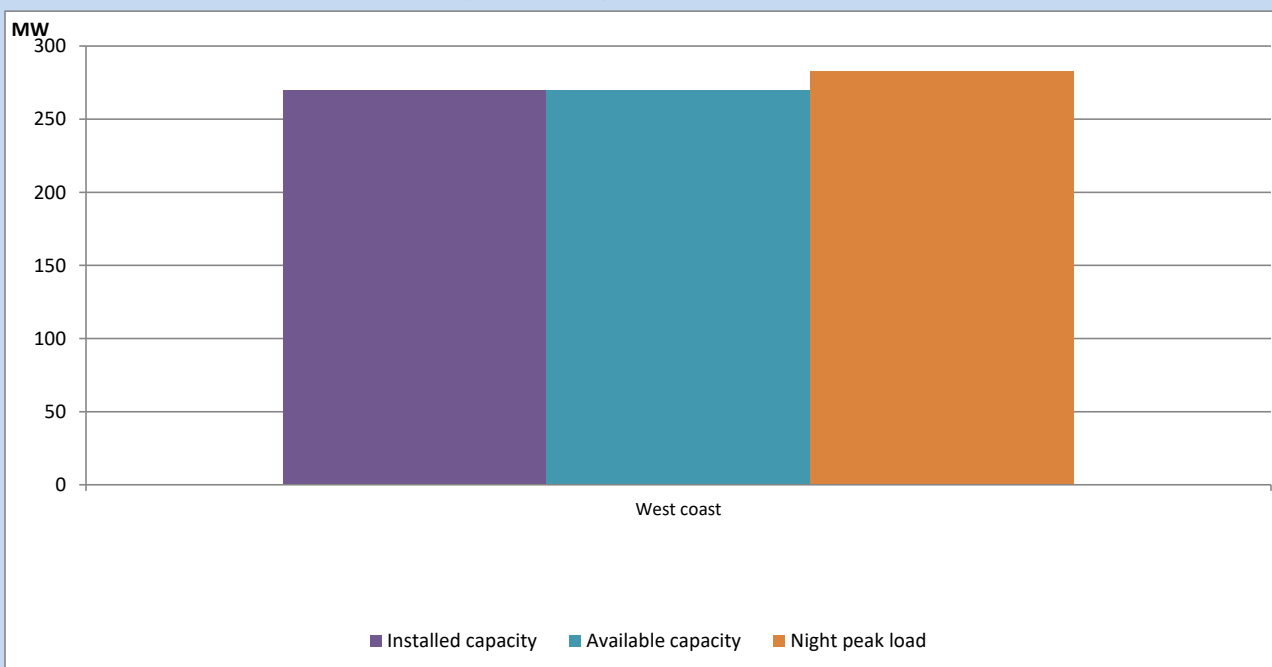
March 7, 2023



Available Generation is estimated based on plant availability at 6.00am on

March 8, 2023

## IPP owned Thermal Plant Loading at the Night Peak

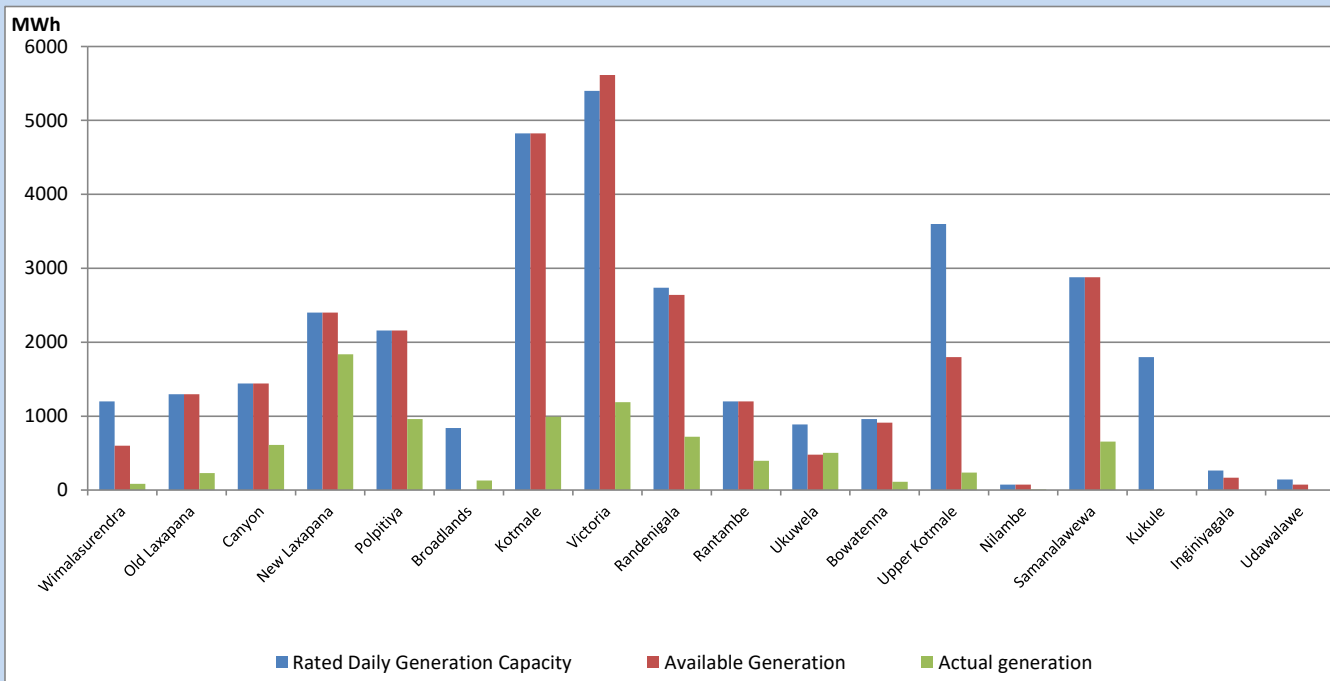


Note- Plant availability is recorded at 6.00 am on

March 8, 2023

## Major Hydro Plant Dispatch

March 7, 2023

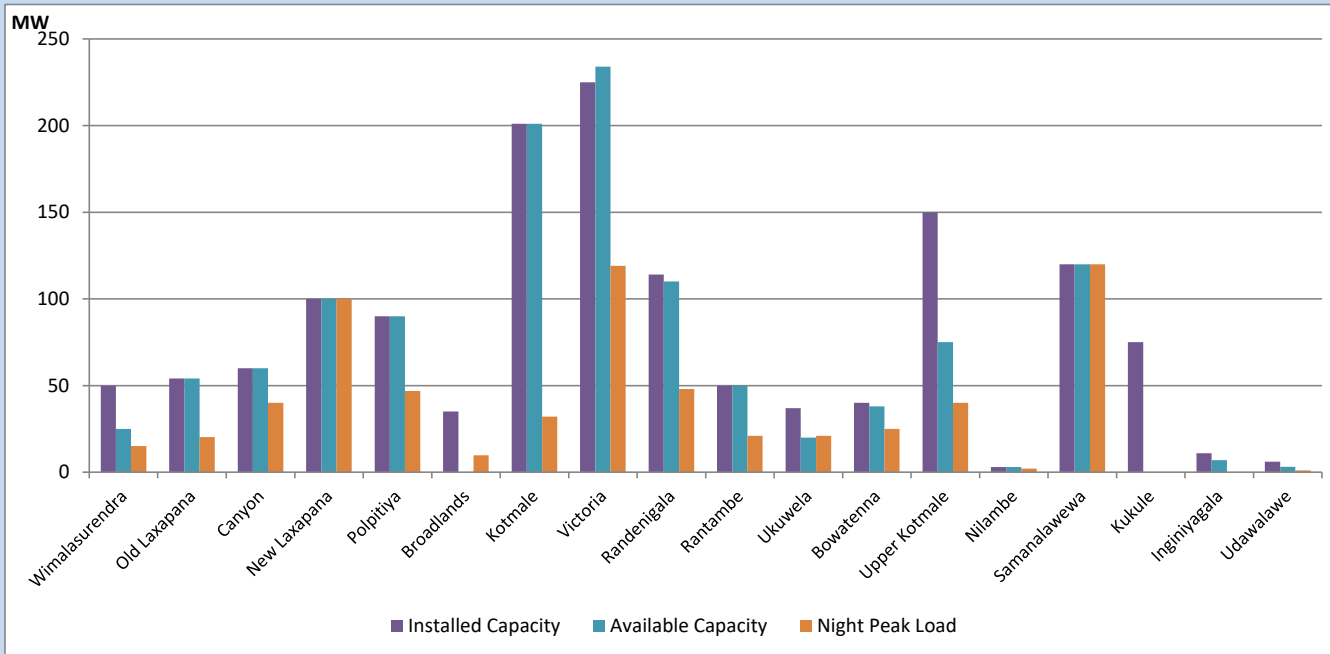


Available Generation is estimated based on plant availability at 6.00am on  
Broadlands power plant is operating in the Commissioning Stage

March 8, 2023

## Major Hydro Plant Loading at Night Peak

March 7, 2023



Note- Plant availability is recorded at 6.00 am on  
Broadlands power plant is operating in the Commissioning Stage

March 8, 2023

## Summary of Major Plant performance

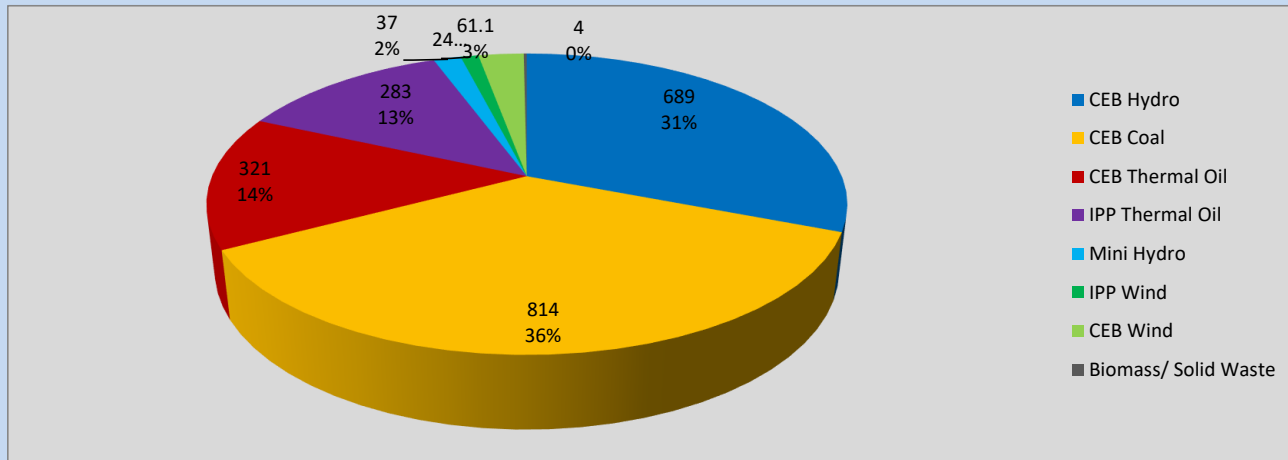
Plant	Installed Capacity	Plant Availability	Night peak Load	Plant Dispatch
	(MW)	(MW)	(MW)	(MWh)
Wimalasurendra	50	25	15	83
Old Laxapana	54	54	20	228
Canyon	60	60	40	611
New Laxapana	100	100	100	1,837
Polpitiya	90	90	47	961
Broadlands	35	0	10	130
Kotmale	201	201	32	990
Victoria	225	234	119	1,190
Randenigala	114	110	48	722
Rantambe	50	50	21	395
Ukuwela	37	20	21	504
Bowatenna	40	38	25	111
Upper Kotmale	150	75	40	238
Nilambe	3	3	2	7
Samanalawewa	120	120	120	654
Kukule	75	0	0	0
Inginiyagala	11	7	0	0
Udawalawe	6	3	1	0
Puttalam Coal I	270	270	270	6,355
Puttalam Coal II	270	270	270	6,329
Puttalam Coal III	270	270	274	6,461
KPS Small GTs	64	16	0	0
KPS GT 7	115	115	0	0
KCCP	161	158	149	3,690
Sapugaskanda A	70	45	45	732
Sapugaskanda B	70	45	45	745
Uthura Janani	26	16	23	394
Barge CEB	60	60	59	1,141
CEB-Thulhiriya	10	0	0	0
CEB-Kolonnawa	20	0	0	0
CEB-Mathugama	20	13	0	0
ACE Matara	24	0	0	0
Asia Power	50	0	0	0
Sojitz Kelanitissa	163	0	0	0
West Coast	270	270	283	2,602
Nothern Power	36	0	0	0
ACE Embilipitiya	93	0	0	0
<b>Total</b>	<b>3,483</b>	<b>2,738</b>	<b>2,205</b>	<b>39,862</b>

Plant availability is the availability recorded at 6 am on

March 8, 2023

## Contribution to the Night Peak in MW

March 7, 2023

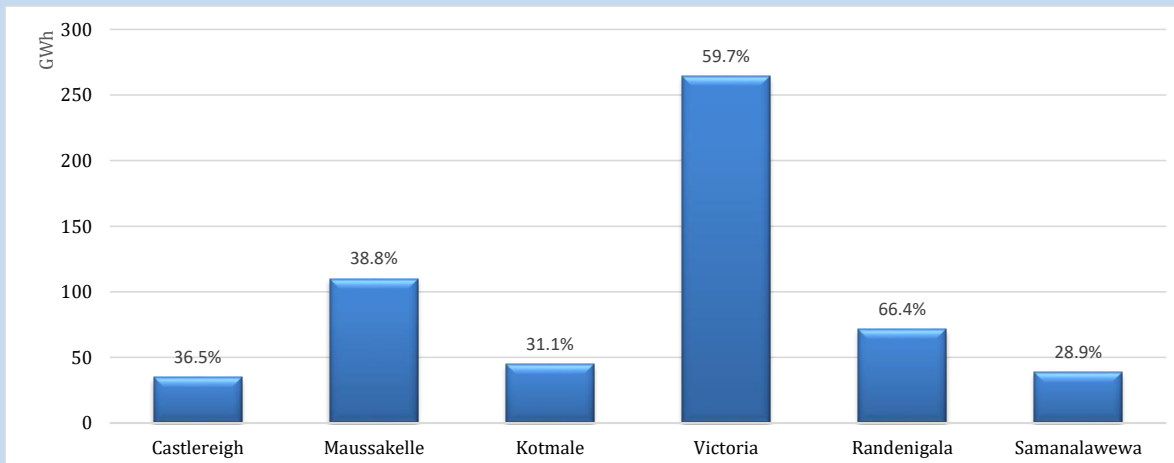


Night Peak*	2,233 MW
Day Peak	1,960 MW
Minimum Demand	1,097 MW

Above figures are excluding contribution from roof top solar, non telemetered solar and mini hydro plants

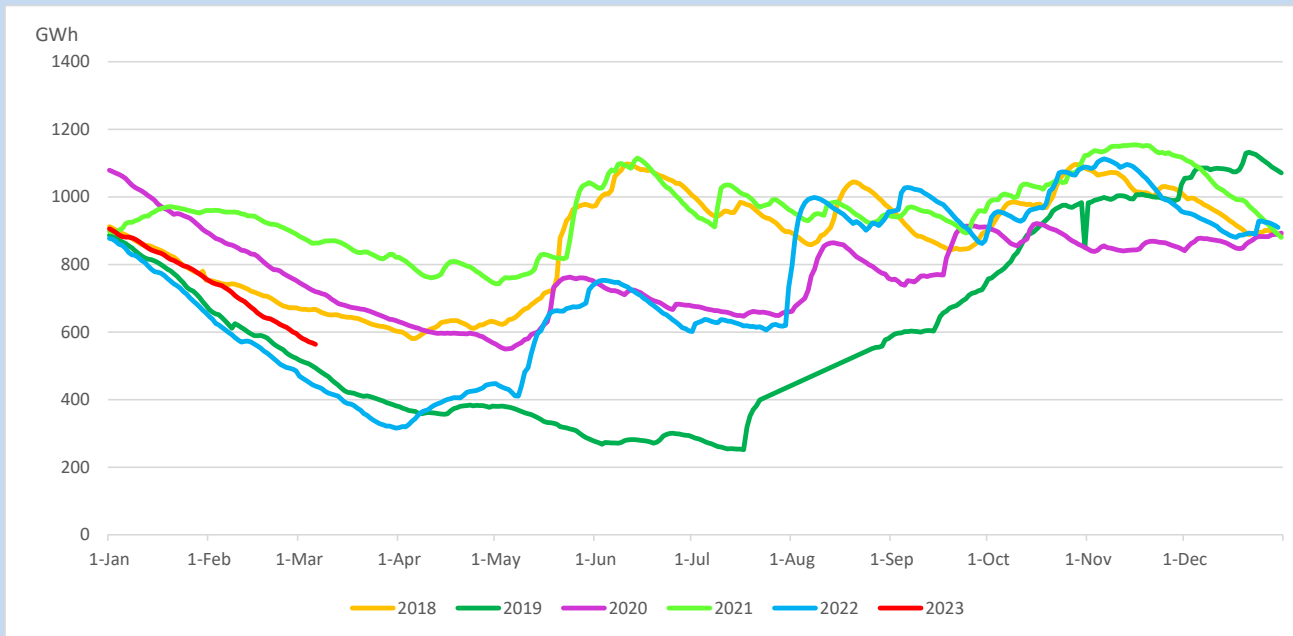
## Reservoir Levels -

as at 06.00 Hr on March 8, 2023

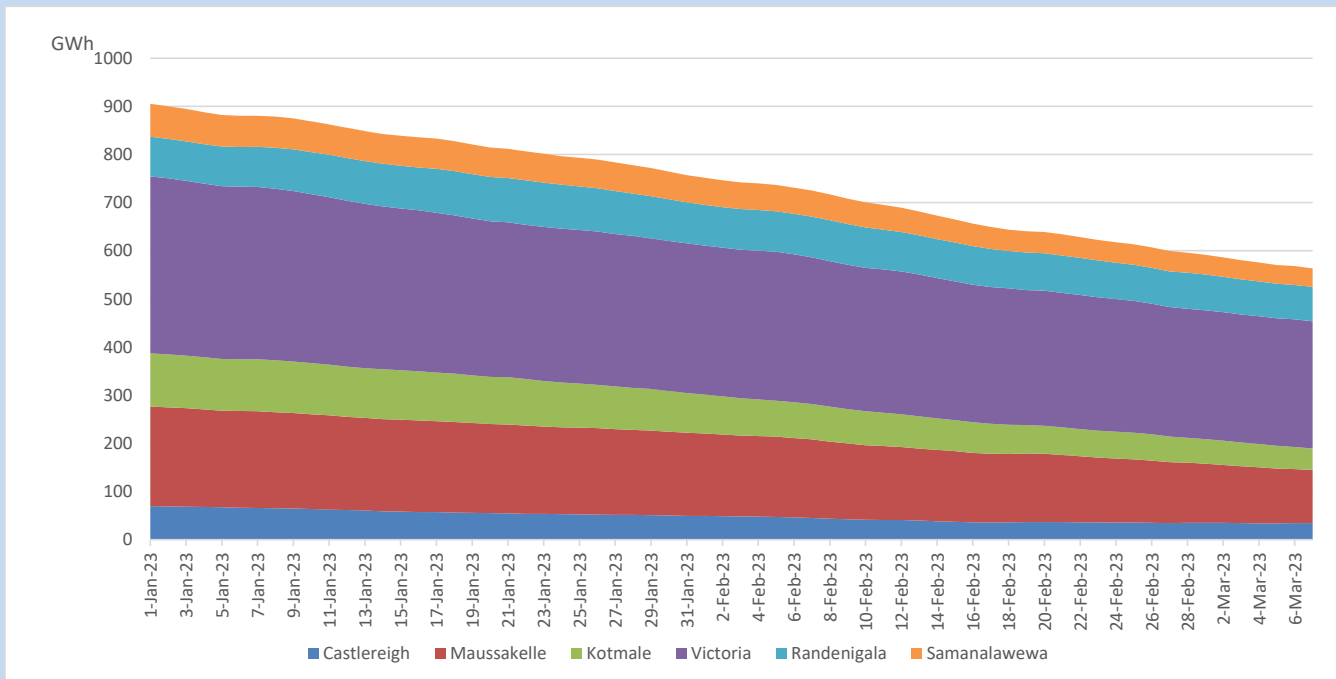


Total Reservoir Level	563.5 GWh
% of Total capacity	46.7%

## Comparison of Total Reservoir Storage Levels with Past Years

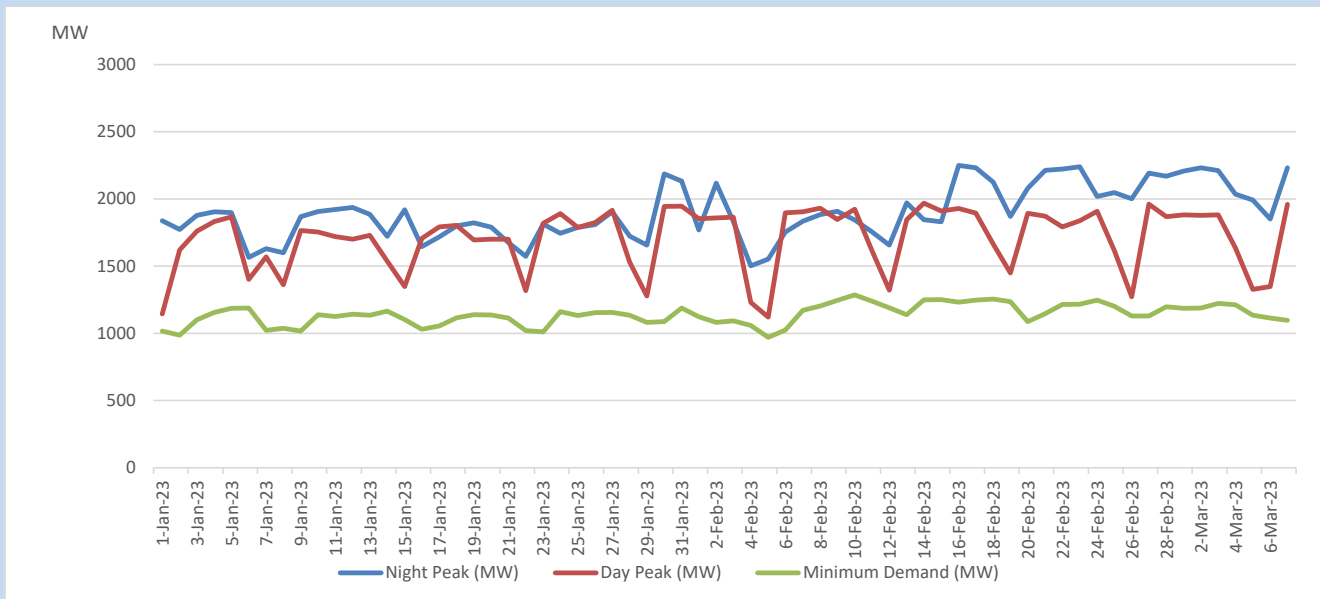


## Variation of Major Hydro Reservoir Levels in the current year (GWh)





## Variation of Demand during the current year

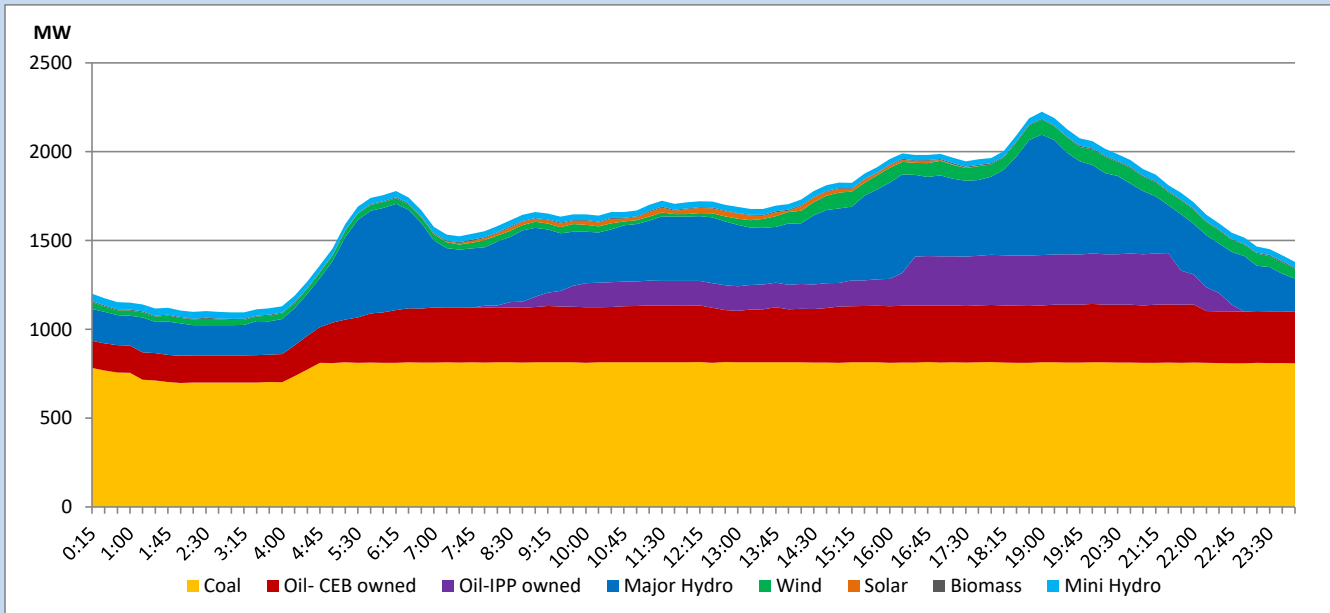


The above figures are excluding contribution from roof top solar, non telemetered solar and mini hydro plants

## Daily Load Curve

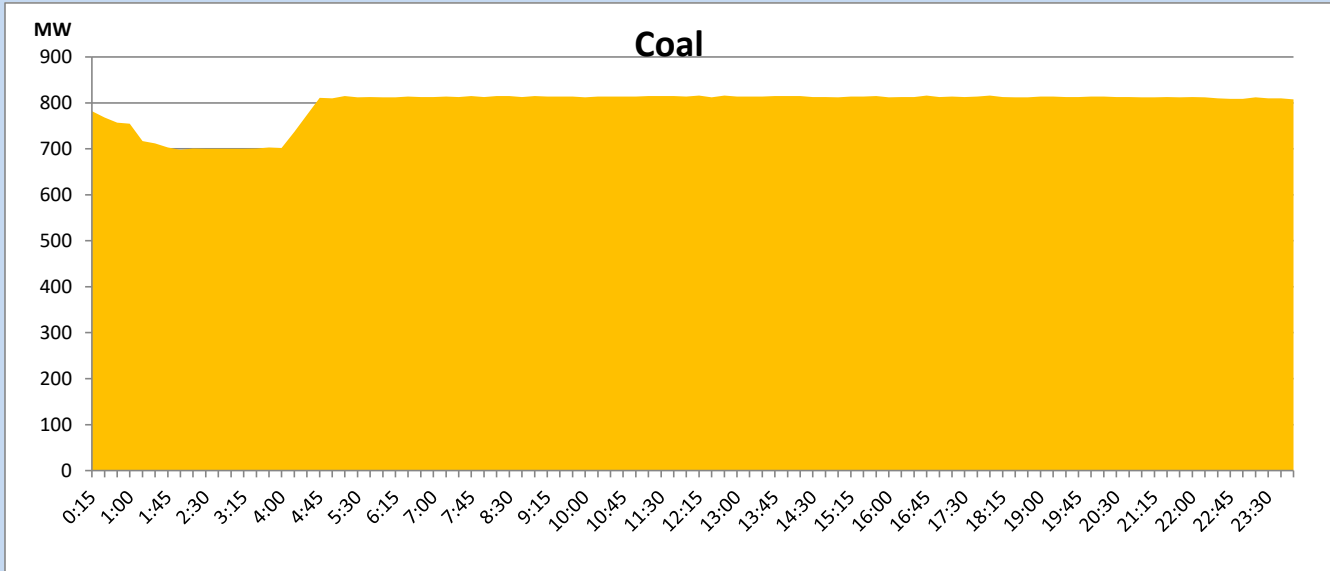
March 7, 2023

Solar and wind data is based on Telemetered Power Stations only



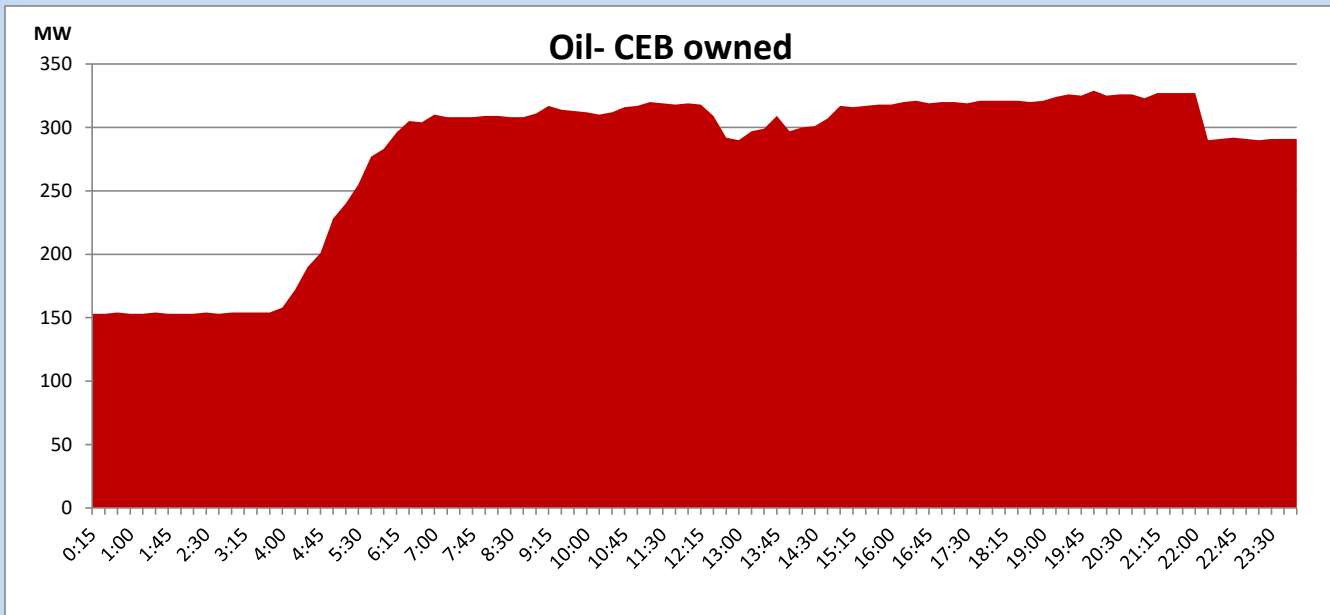
## Coal Generation during

March 7, 2023



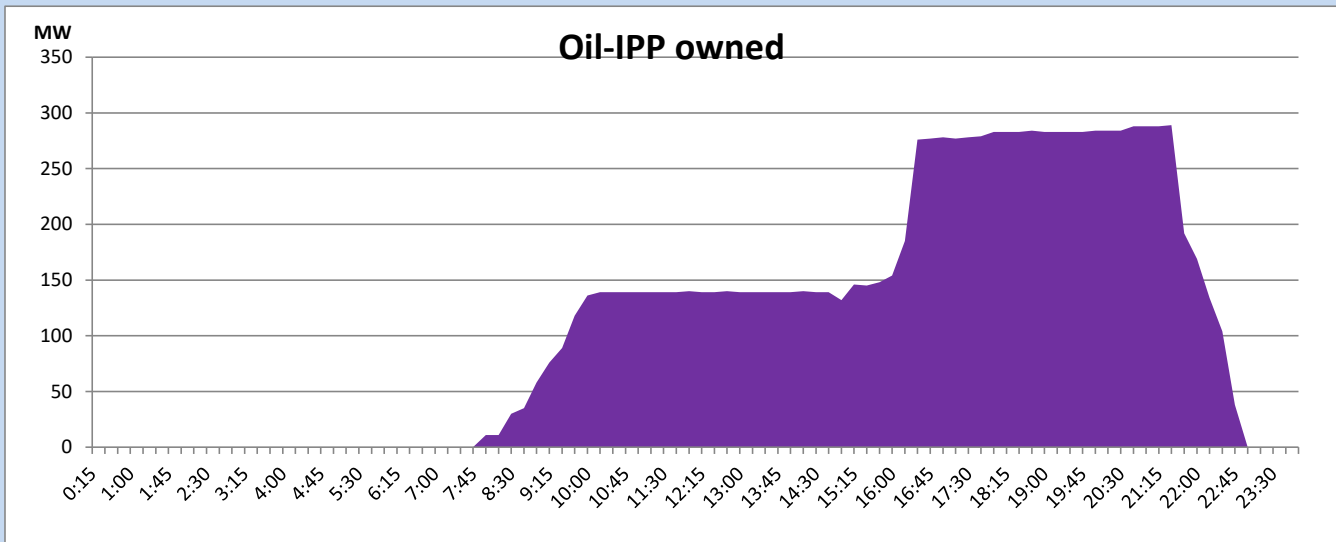
## CEB Oil Plant Generation during

March 7, 2023



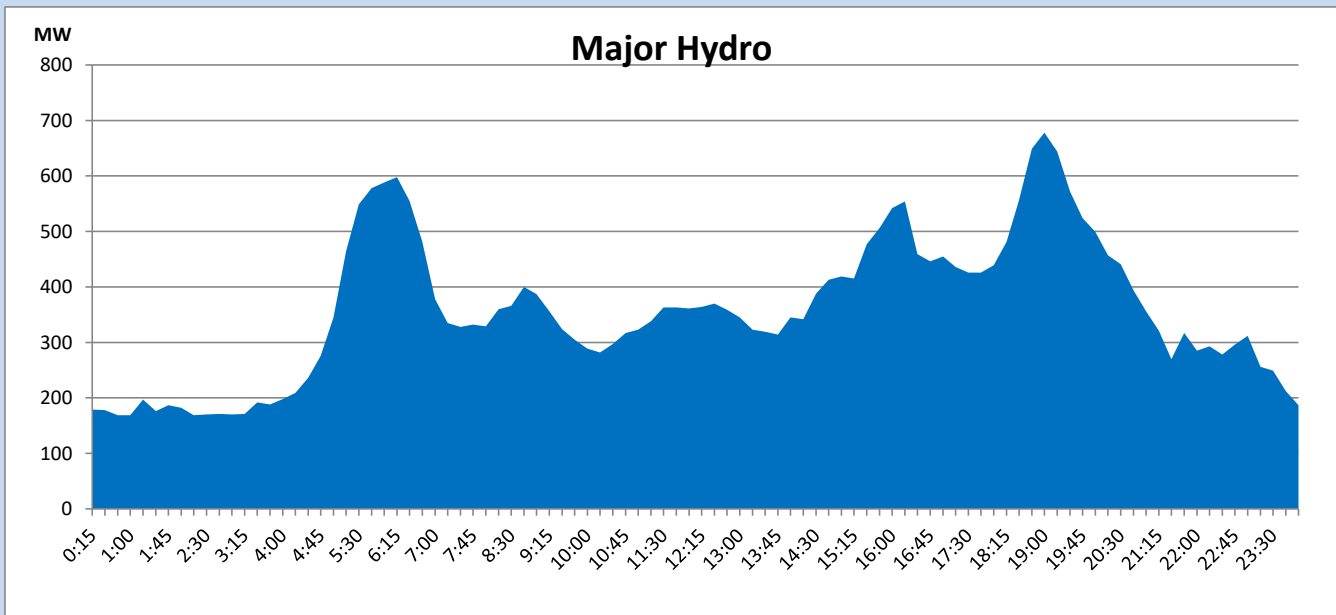
## IPP Oil Plant Generation during

March 7, 2023



## Major Hydro Generation during

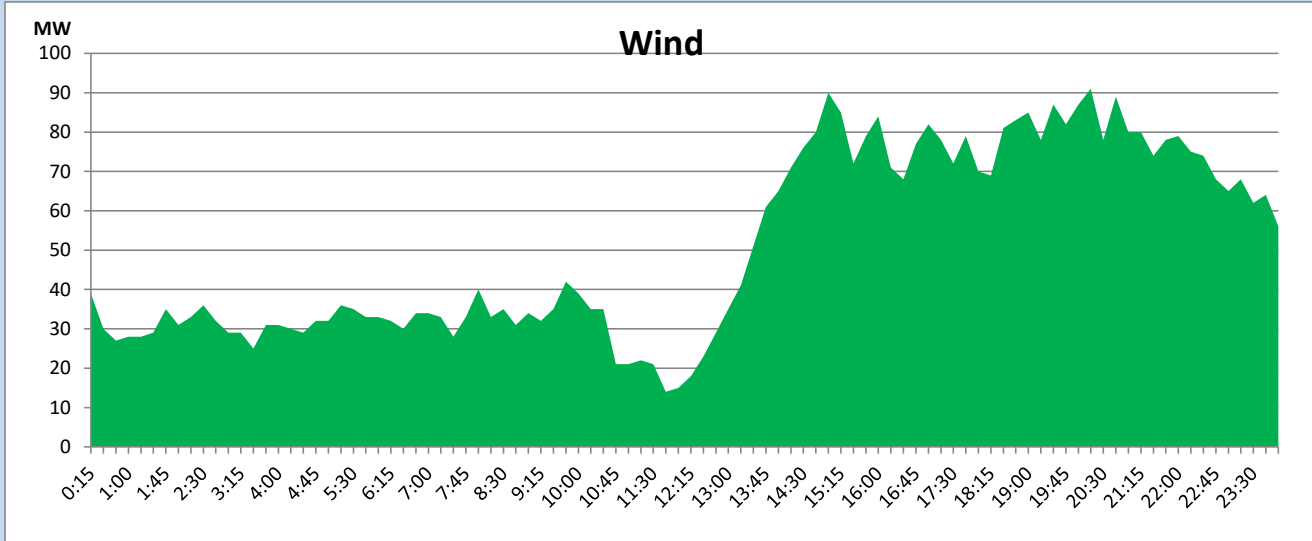
March 7, 2023



## Wind Generation during

March 7, 2023

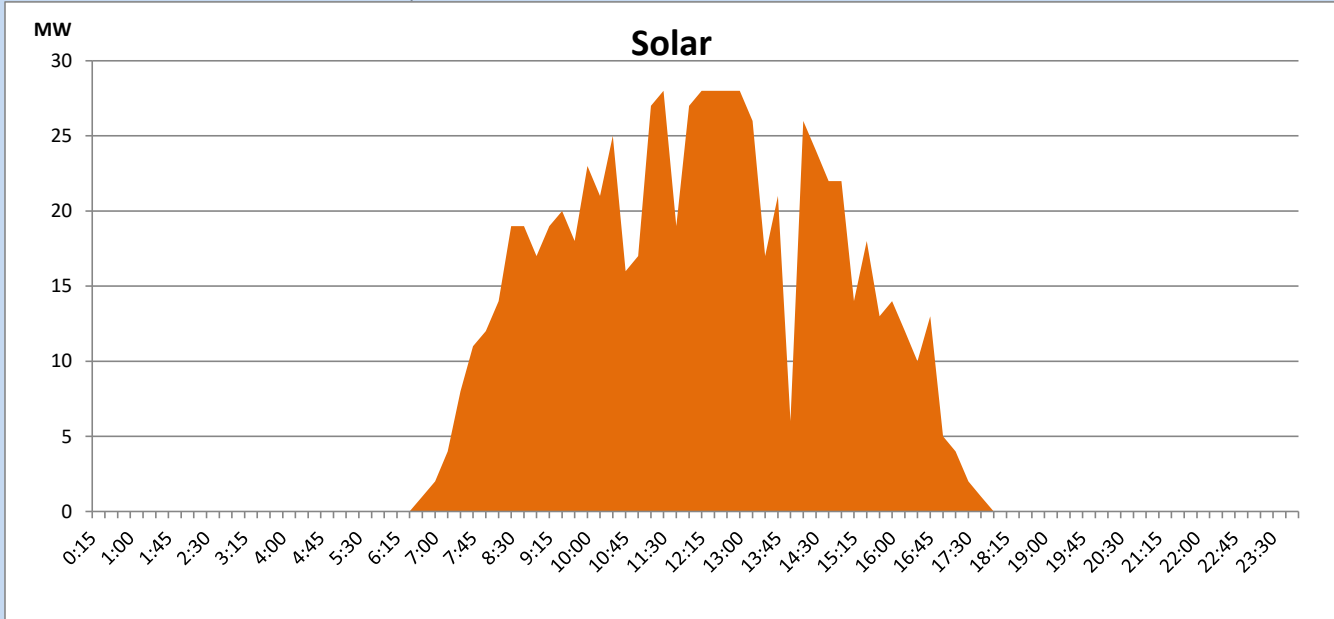
Based on Telemetered Power Stations only



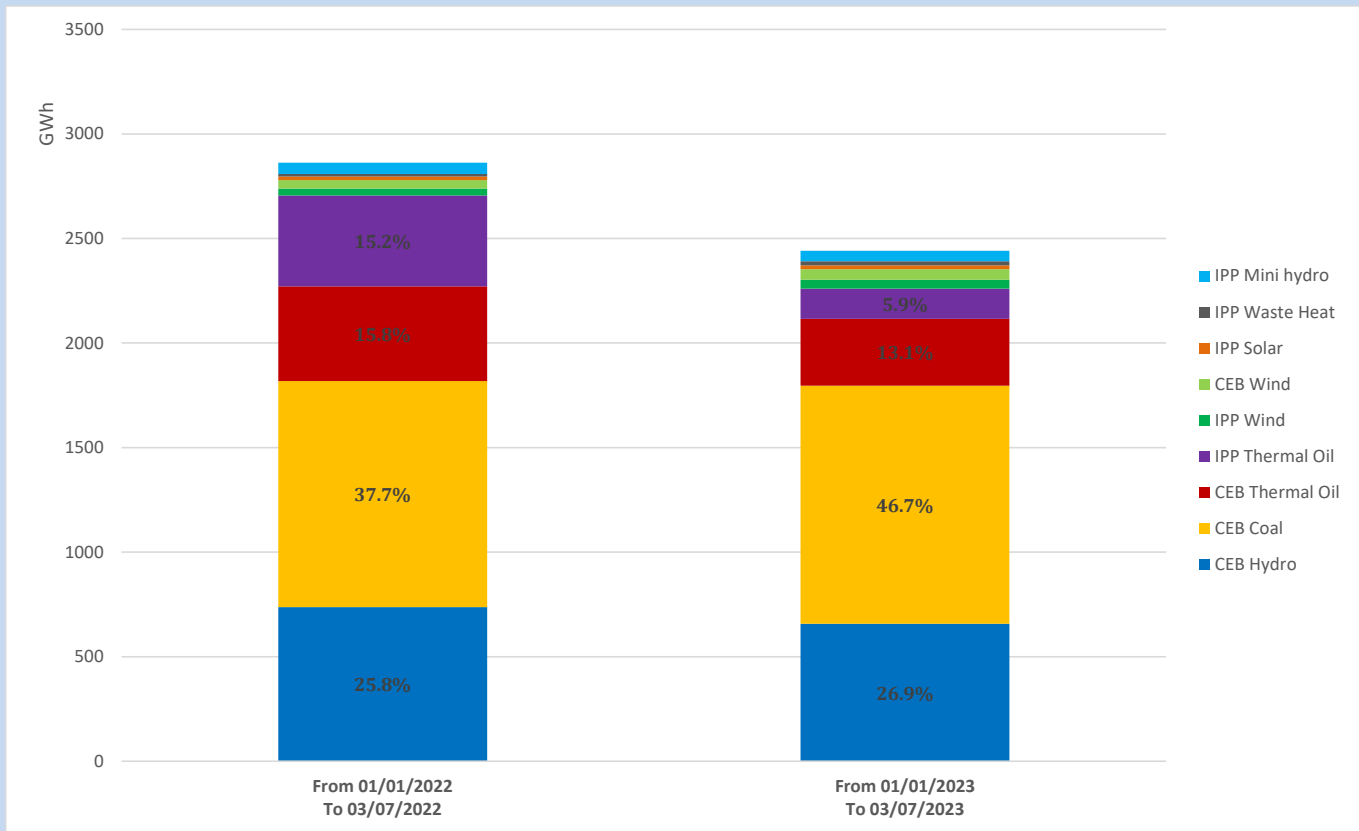
## Solar Generation during

March 7, 2023

Based on Telemetered Power Stations only



## Cumulative Dispatch Comparison with Last Year



**Thermal Plant Fuel types**

<b>Power Station</b>	<b>Primary Fuel</b>
<b>CEB Thermal</b>	
<b>Sapugaskanda 1</b>	Heavy Fuel
<b>Sapugaskanda 2</b>	Heavy Fuel
<b>Kelanitissa Small Gas Turbines</b>	Auto Diesel
<b>GT 7 - Kelanitissa</b>	Auto Diesel
<b>Kelanitissa CCY</b>	Naphtha or Diesel
<b>Lakvijaya 1</b>	Coal
<b>Lakvijaya 2</b>	Coal
<b>Lakvijaya 3</b>	Coal
<b>Uthuru Janani</b>	Heavy Fuel
<b>Barge CEB</b>	Heavy Fuel

<b>Power Station</b>	<b>Primary Fuel</b>
<b>Private Thermal</b>	
<b>West Coast</b>	Auto Diesel / Heavy Fuel

**Major Incidents reported during the day**

March 7, 2023

Nil.