

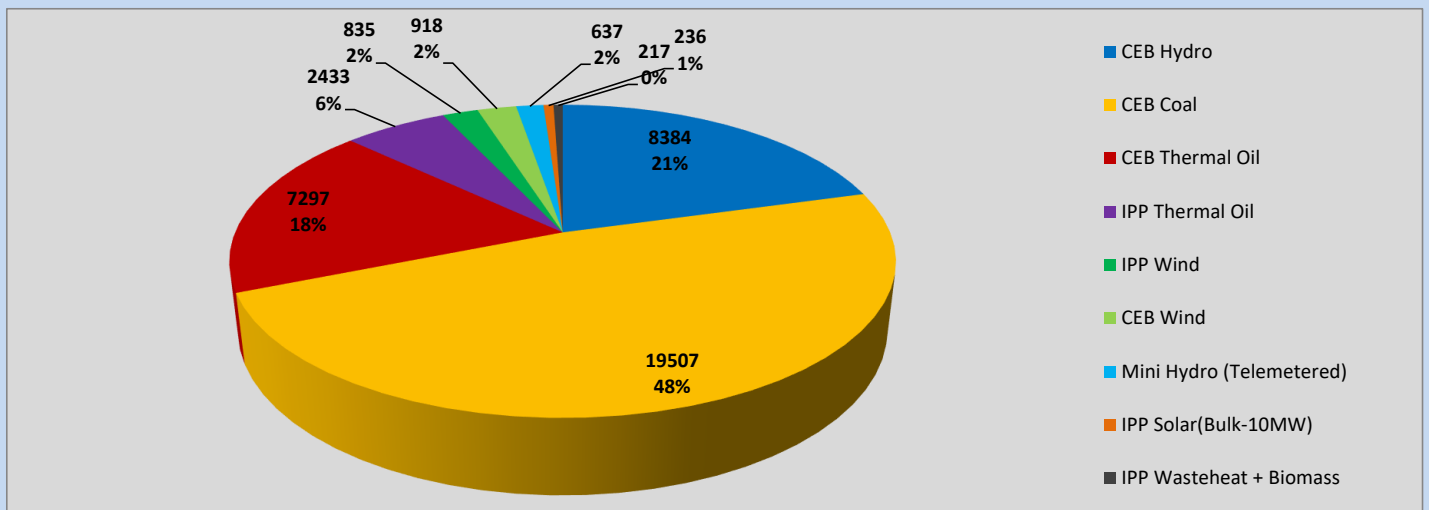
Generation and Reservoirs Statistics

March 3, 2023



PUBLIC UTILITIES COMMISSION OF SRI LANKA

Daily Generation Mix in MWh



Total Generation (Excluding estimated figures) =



40,464 MWh

Estimated figures of CEB generation report

Estimated unserved energy = 0.00 GWh
 Estimated Mini Hydro (Non telemetered) = 673 MWh
 Estimated IPP Solar PV (Bulk 1-10MW) = 304 MWh
 Estimated Solar Roof Top PV = 1490 MWh

Cumulative Dispatch

Following data excludes the contribution from roof top solar, non telemetered solar and mini hydro plants

For Current Month

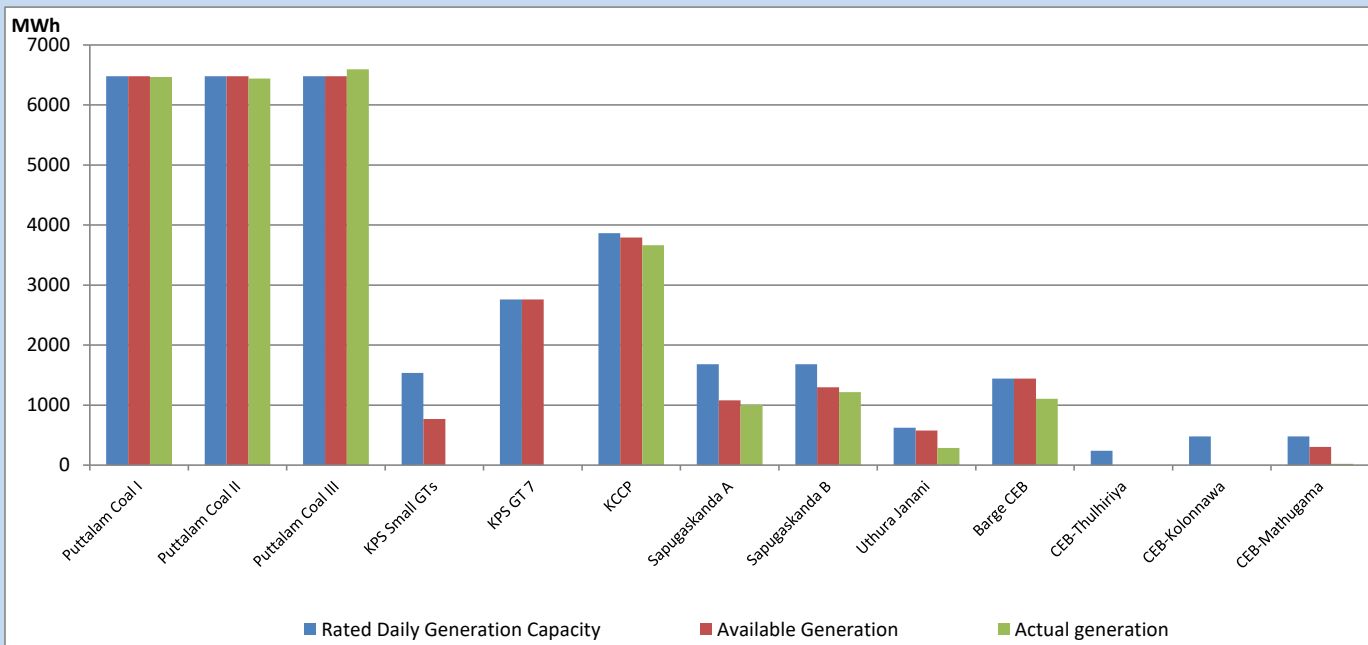
Category	Dispatch (GWh)	Percentage
CEB Hydro	24	20.02%
CEB Coal	59	47.94%
CEB Thermal Oil	19	15.76%
IPP Thermal	11	8.94%
SPP Wind	3	2.23%
CEB Wind	3	2.33%
Mini Hydro (Telemetered)	2	1.64%
IPP Solar (Bulk-10MW)	1	0.57%
IPP Wasteheat + BMP	1	0.57%
Total	122	

For Current Year

Category	Dispatch (GWh)	Percentage
CEB Hydro	626	27.23%
CEB Coal	1,063	46.24%
CEB Thermal Oil	296	12.89%
IPP Thermal	142	6.18%
SPP Wind	41	1.78%
CEB Wind	47	2.06%
Mini Hydro (Telemetered)	48	2.09%
IPP Solar (Bulk-10MW)	17	0.75%
IPP Wasteheat	18	0.77%
Total	2,298	

CEB owned Thermal Plant Dispatch

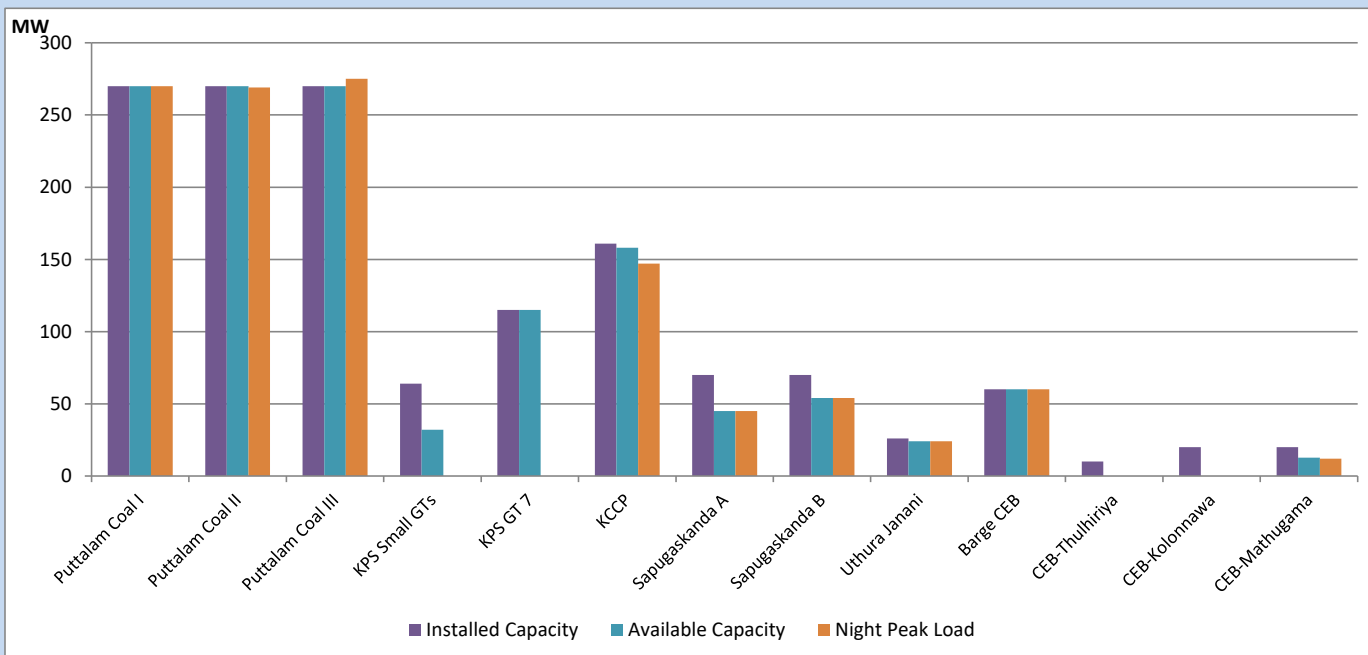
March 3, 2023



Available Generation is estimated based on plant availability at 6.00am on

March 4, 2023

CEB owned Thermal Plant Loading at the Night Peak

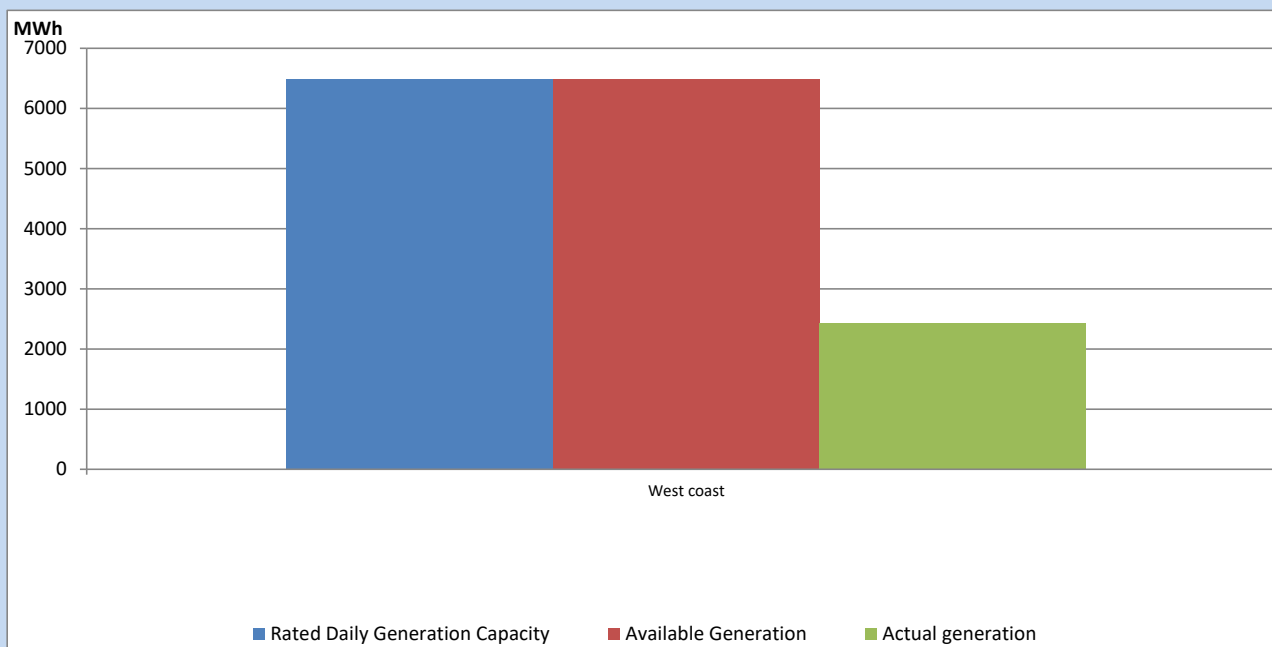


Note- Plant availability is recorded at 6.00 am on

March 4, 2023

IPP owned Thermal Plant Dispatch

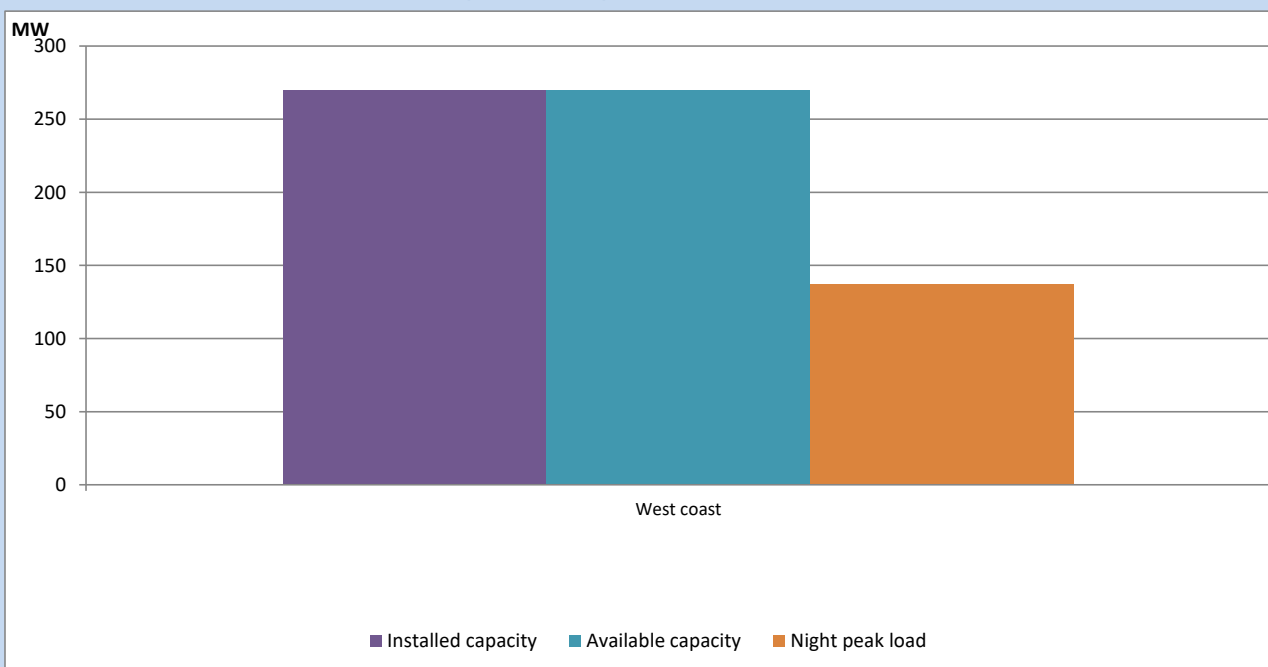
March 3, 2023



Available Generation is estimated based on plant availability at 6.00am on

March 4, 2023

IPP owned Thermal Plant Loading at the Night Peak

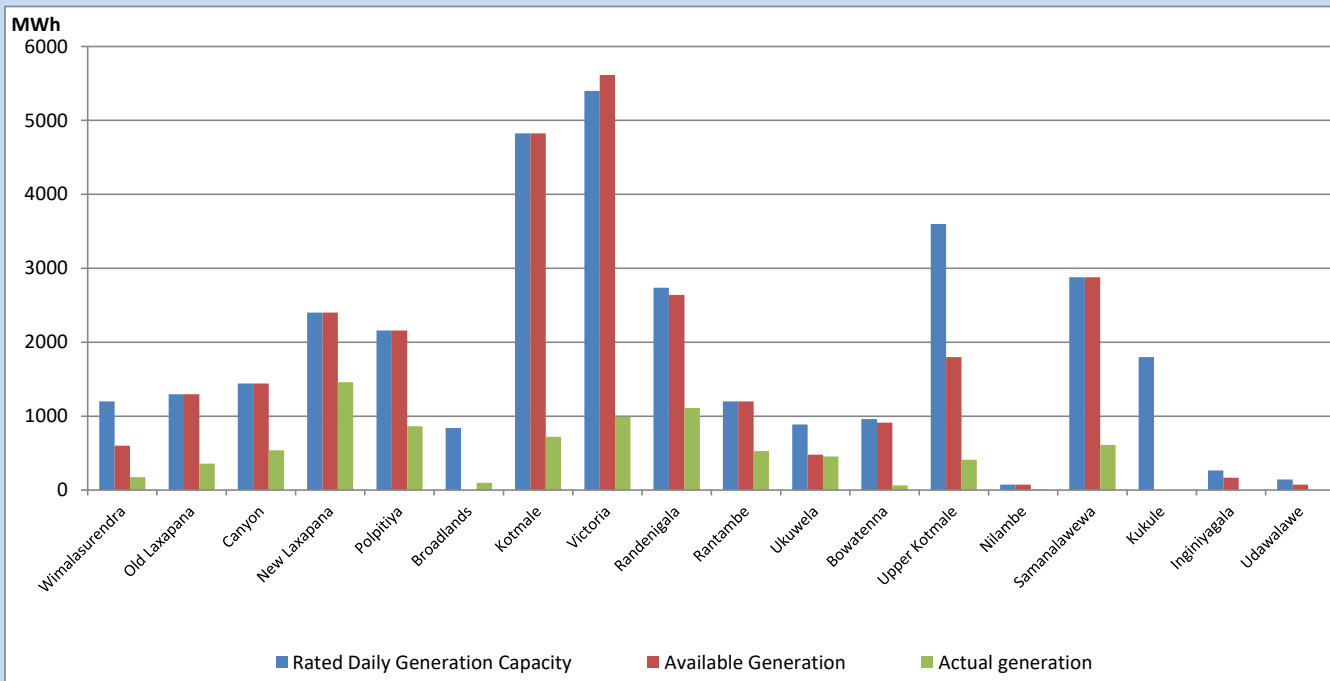


Note- Plant availability is recorded at 6.00 am on

March 4, 2023

Major Hydro Plant Dispatch

March 3, 2023

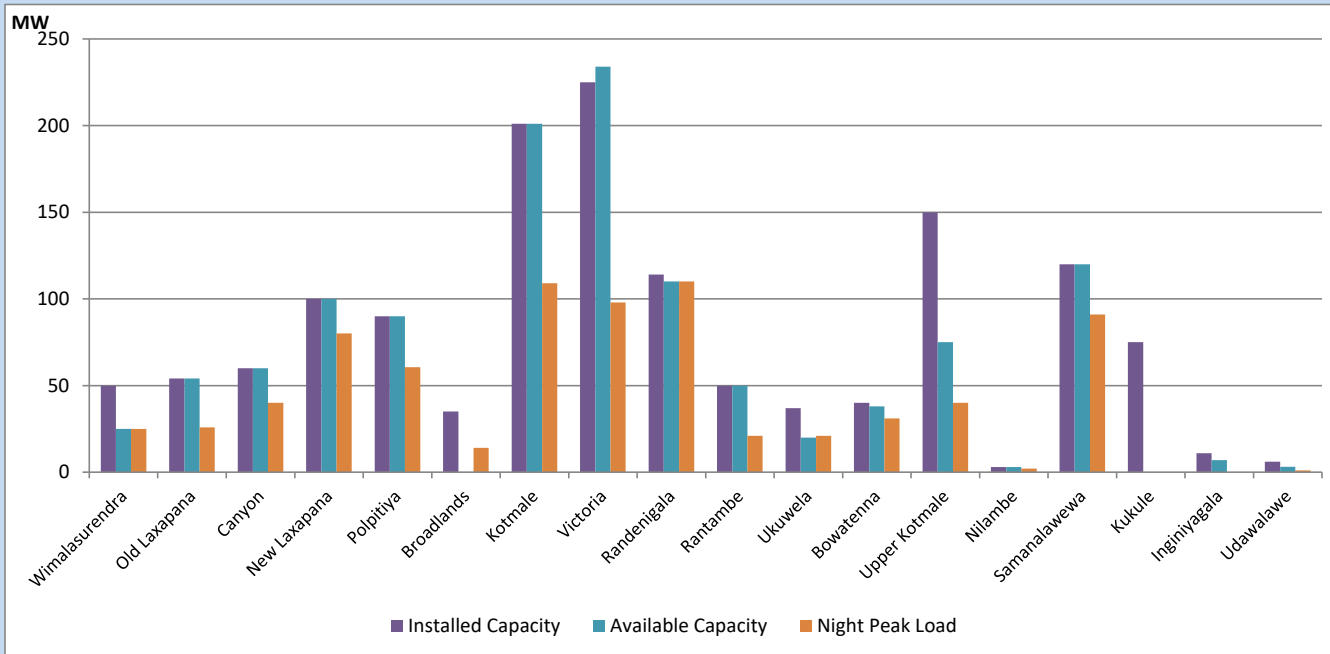


Available Generation is estimated based on plant availability at 6.00am on
Broadlands power plant is operating in the Commissioning Stage

March 4, 2023

Major Hydro Plant Loading at Night Peak

March 3, 2023



Note- Plant availability is recorded at 6.00 am on

March 4, 2023

Broadlands power plant is operating in the Commissioning Stage

Summary of Major Plant performance

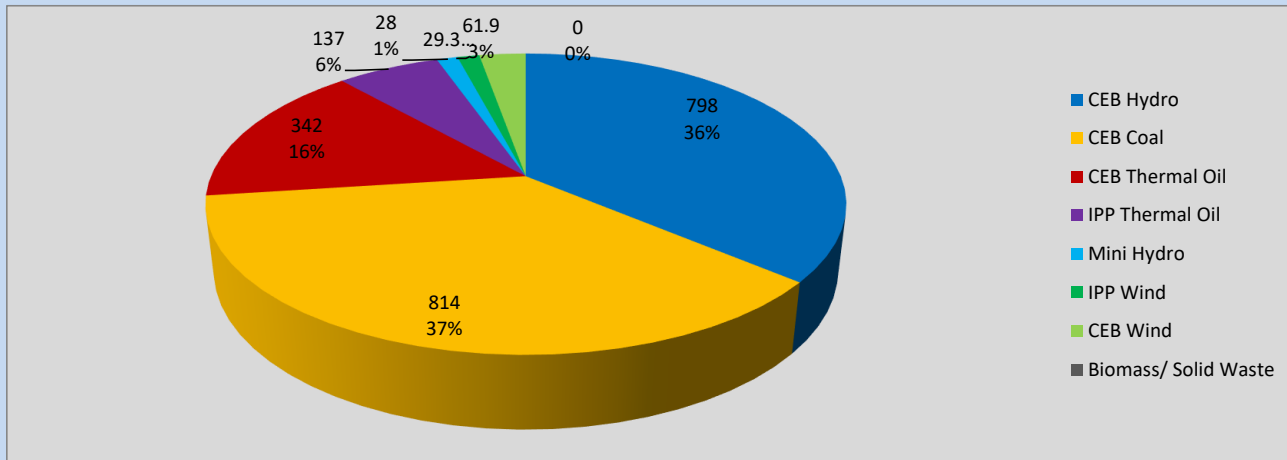
Plant	Installed Capacity	Plant Availability	Night peak Load	Plant Dispatch
	(MW)	(MW)	(MW)	(MWh)
Wimalasurendra	50	25	25	173
Old Laxapana	54	54	26	356
Canyon	60	60	40	538
New Laxapana	100	100	80	1,458
Polpitiya	90	90	61	862
Broadlands	35	0	14	98
Kotmale	201	201	109	720
Victoria	225	234	98	993
Randenigala	114	110	110	1,110
Rantambe	50	50	21	529
Ukuwela	37	20	21	455
Bowatenna	40	38	31	65
Upper Kotmale	150	75	40	408
Nilambe	3	3	2	9
Samanalawewa	120	120	91	610
Kukule	75	0	0	0
Inginiyagala	11	7	0	0
Udawalawe	6	3	1	0
Puttalam Coal I	270	270	270	6,468
Puttalam Coal II	270	270	269	6,443
Puttalam Coal III	270	270	275	6,596
KPS Small GTs	64	32	0	0
KPS GT 7	115	115	0	0
KCCP	161	158	147	3,665
Sapugaskanda A	70	45	45	1,002
Sapugaskanda B	70	54	54	1,217
Uthura Janani	26	24	24	287
Barge CEB	60	60	60	1,105
CEB-Thulhiriya	10	0	0	0
CEB-Kolonnawa	20	0	0	0
CEB-Mathugama	20	13	12	21
ACE Matara	24	0	0	0
Asia Power	50	0	0	0
Sojitz Kelanitissa	163	0	0	0
West Coast	270	270	137	2,433
Nothern Power	36	0	0	0
ACE Embilipitiya	93	0	0	0
Total	3,483	2,771	2,182	40,464

Plant availability is the availability recorded at 6 am on

March 4, 2023

Contribution to the Night Peak in MW

March 3, 2023

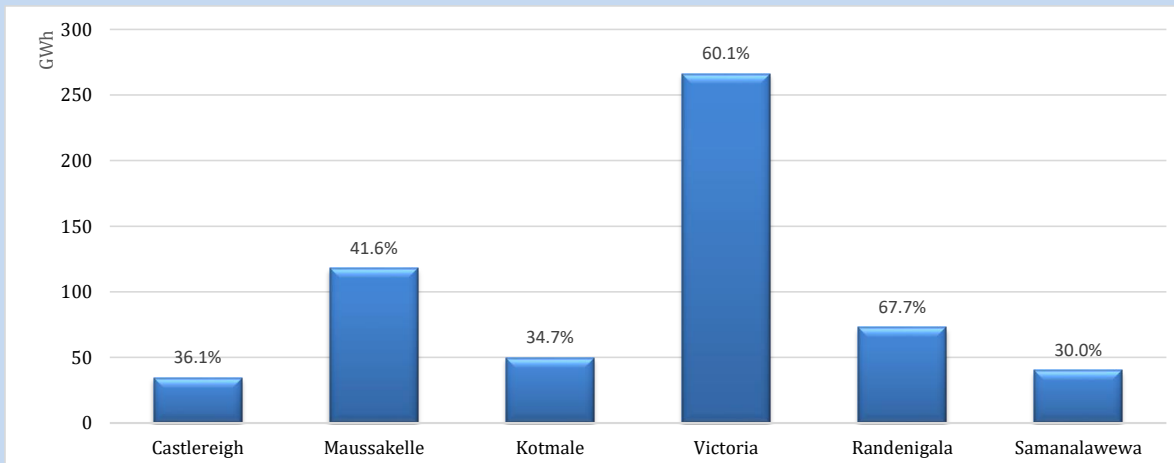


Night Peak*	2,211 MW
Day Peak	1,883 MW
Minimum Demand	1,223 MW

Above figures are excluding contribution from roof top solar, non telemetered solar and mini hydro plants

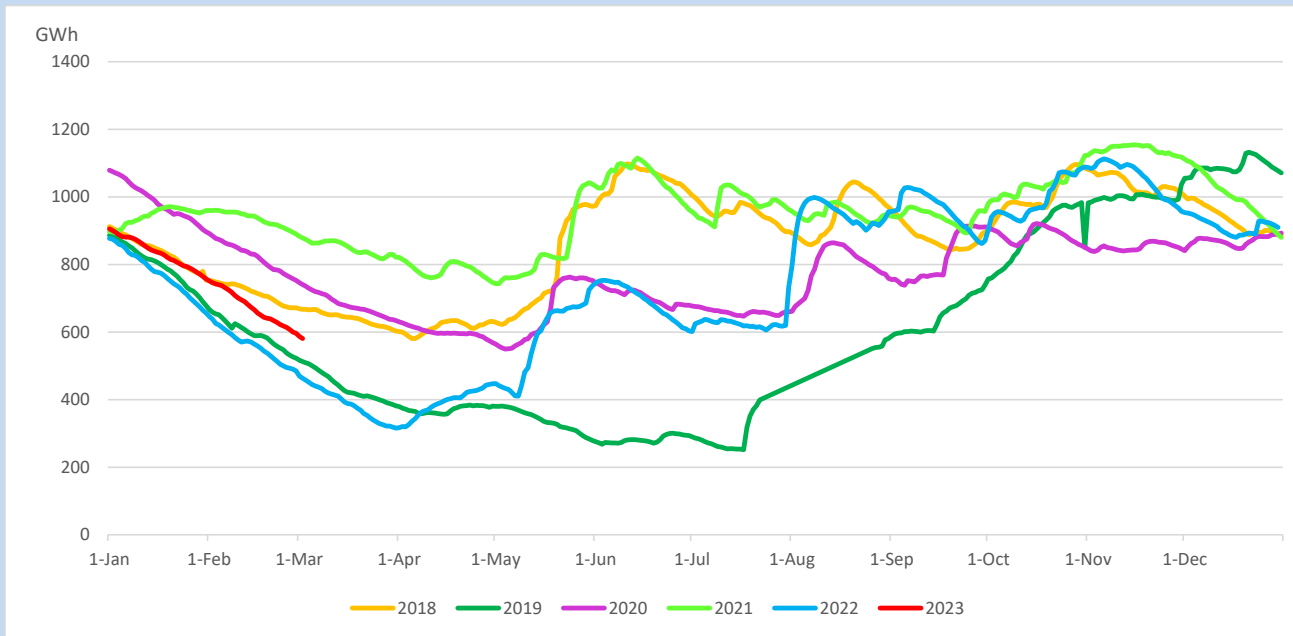
Reservoir Levels -

as at 06.00 Hr on March 4, 2023

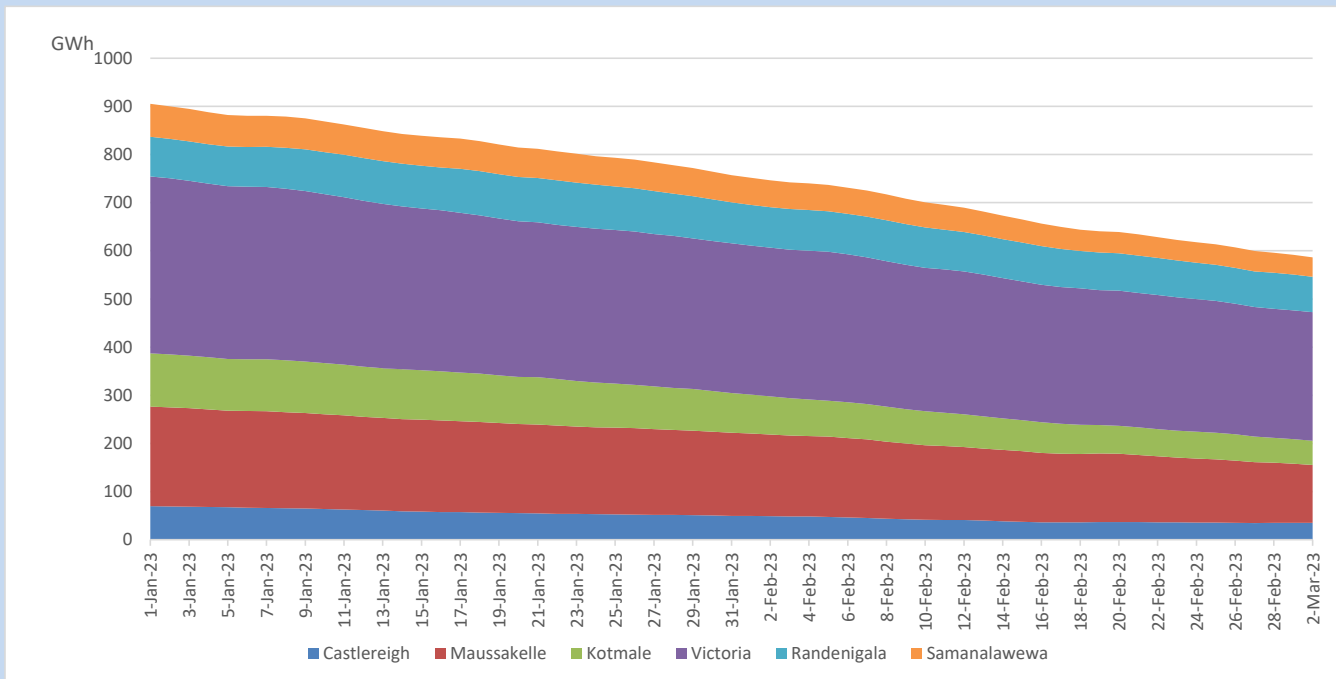


Total Reservoir Level	580.8 GWh
% of Total capacity	48.2%

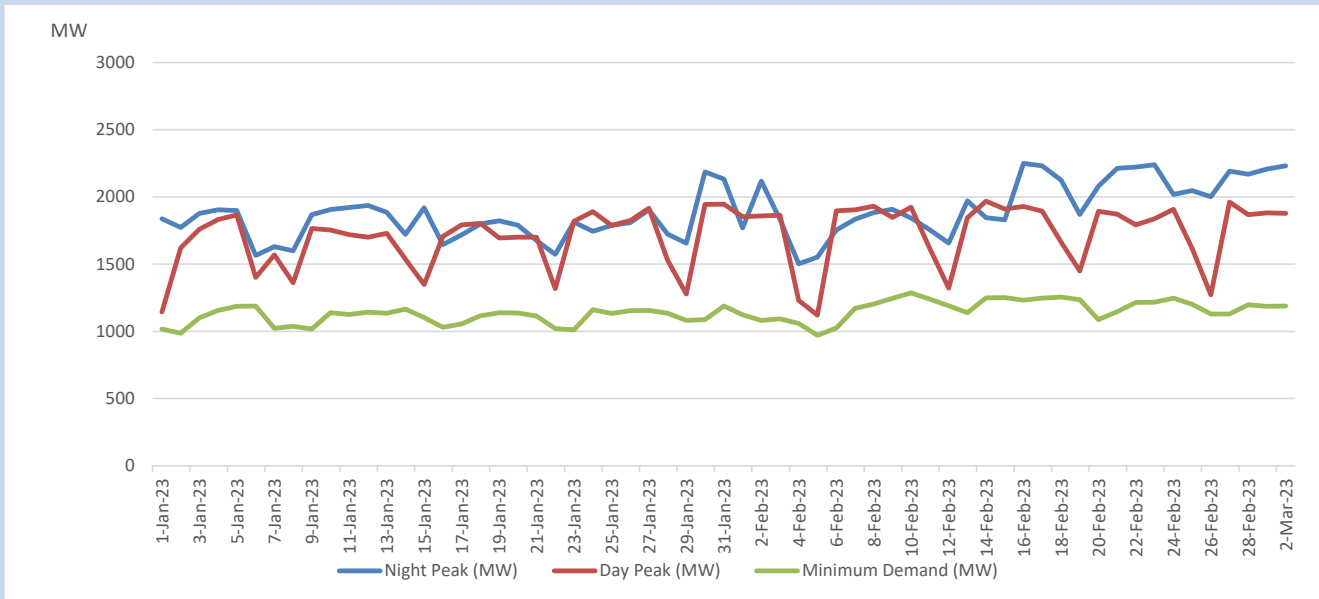
Comparison of Total Reservoir Storage Levels with Past Years



Variation of Major Hydro Reservoir Levels in the current year (GWh)



Variation of Demand during the current year

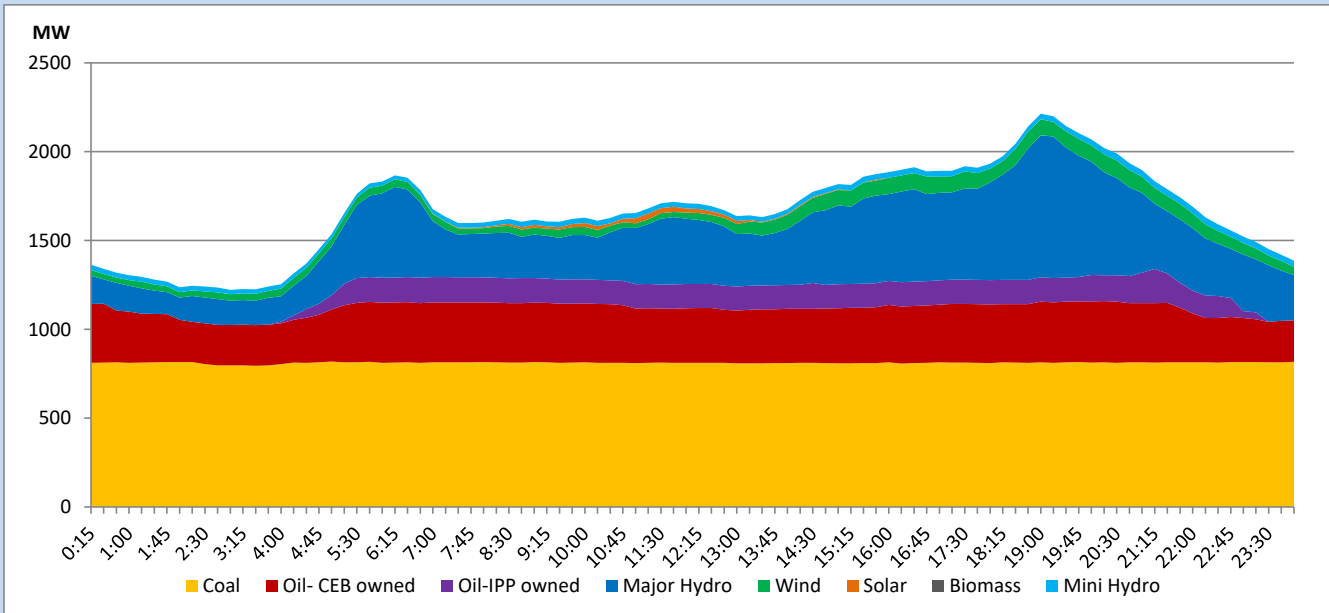


The above figures are excluding contribution from roof top solar, non telemetered solar and mini hydro plants

Daily Load Curve

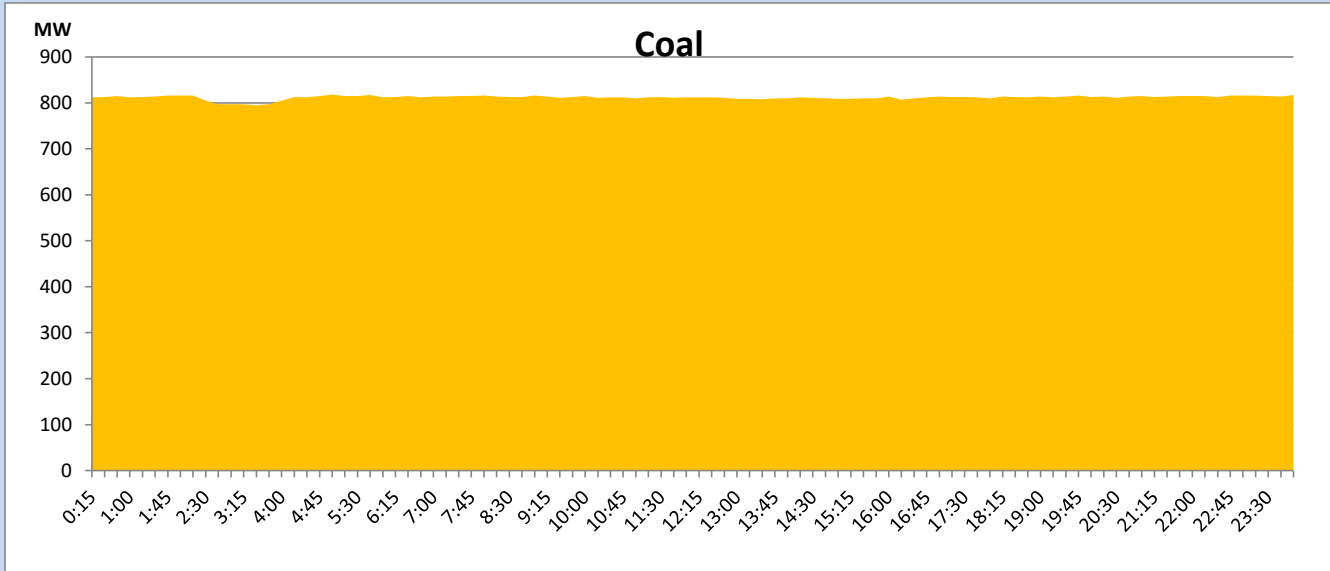
March 3, 2023

Solar and wind data is based on Telemetered Power Stations only



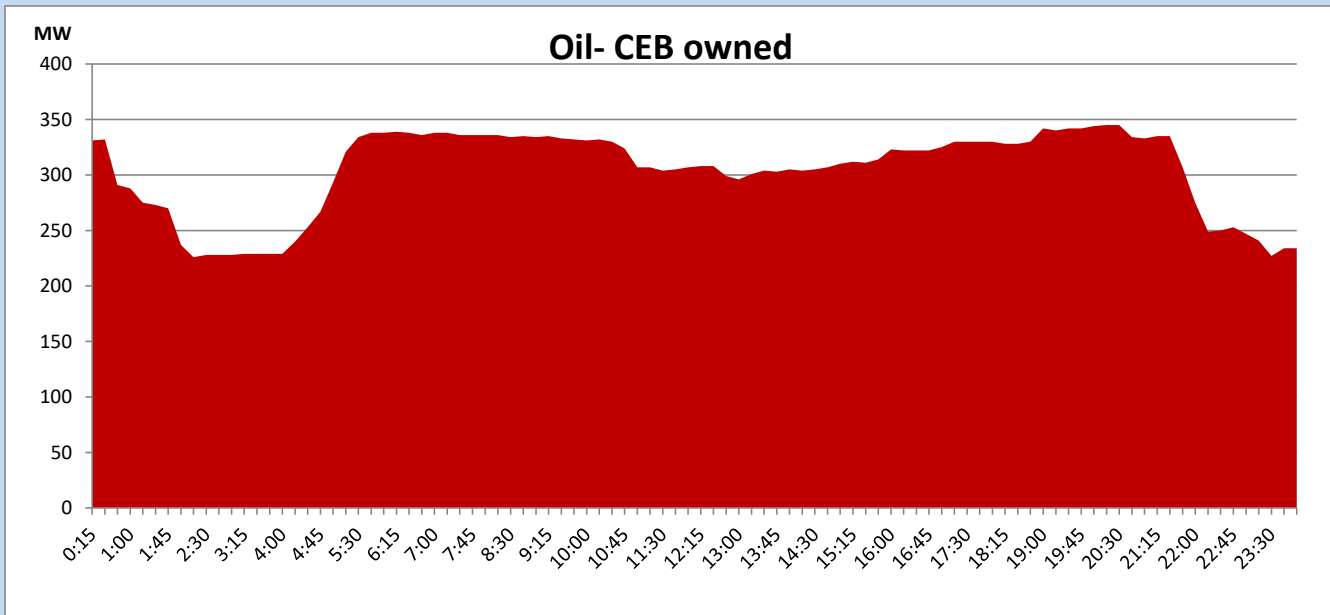
Coal Generation during

March 3, 2023



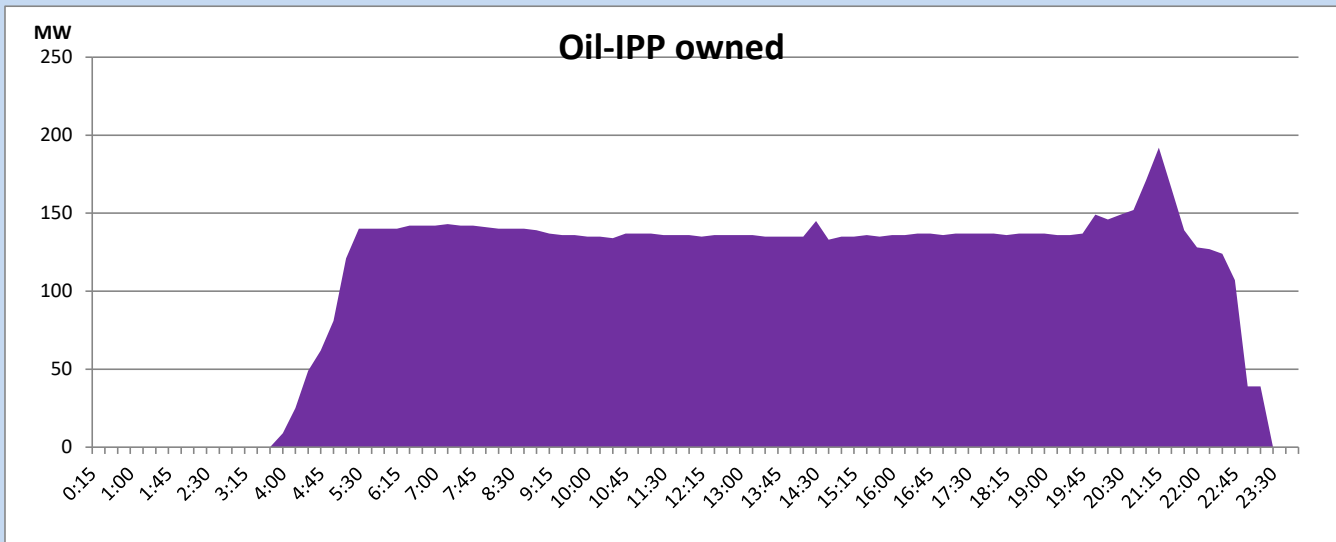
CEB Oil Plant Generation during

March 3, 2023



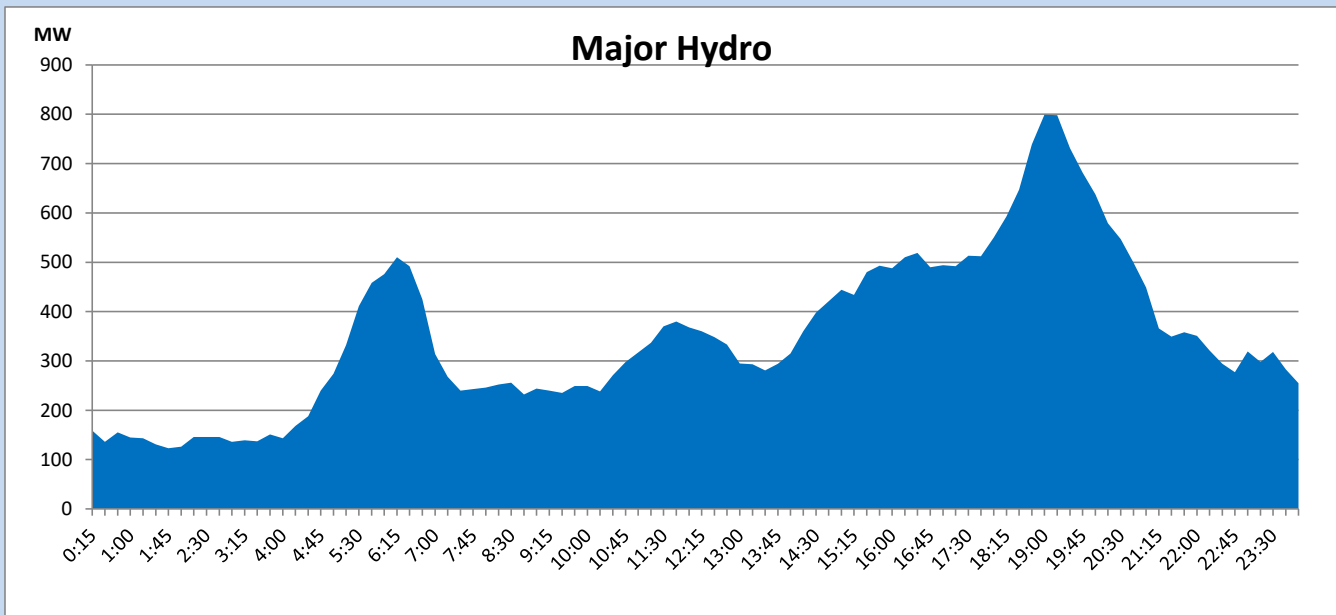
IPP Oil Plant Generation during

March 3, 2023



Major Hydro Generation during

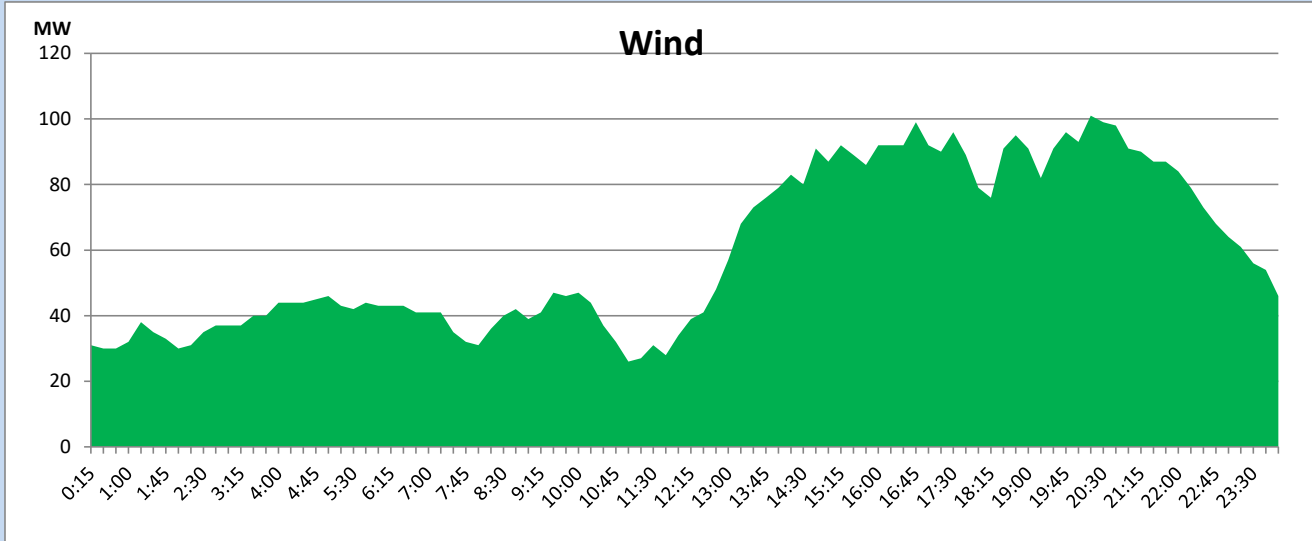
March 3, 2023



Wind Generation during

March 3, 2023

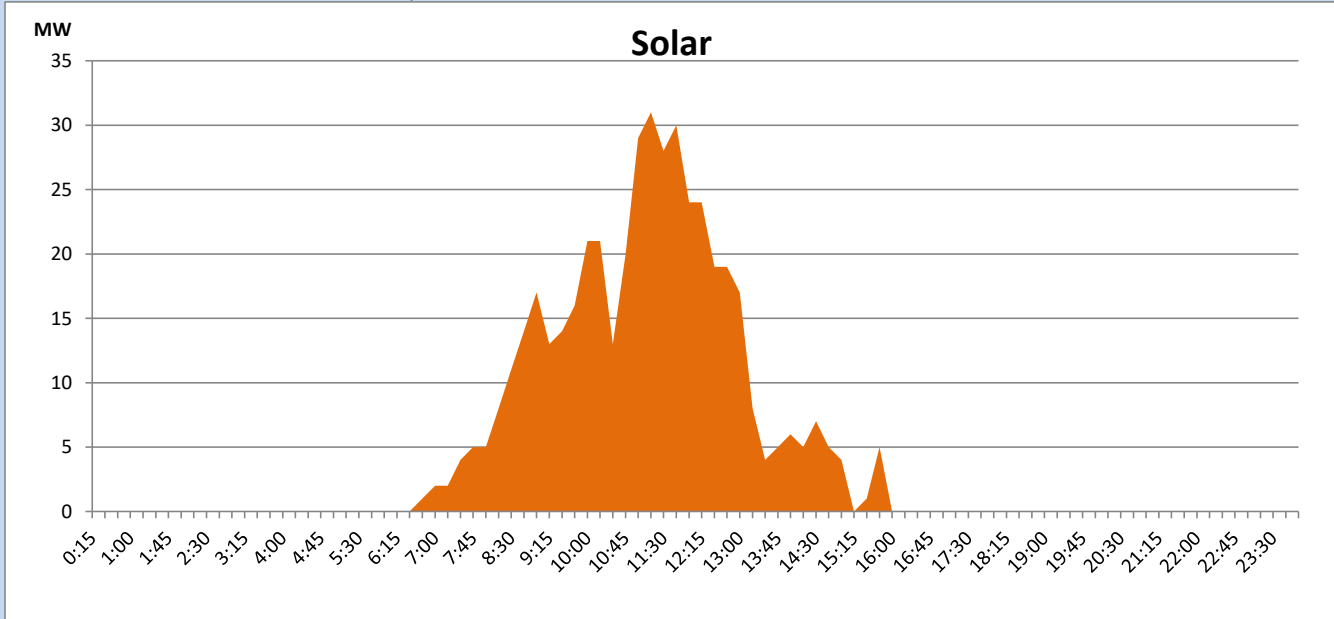
Based on Telemetered Power Stations only



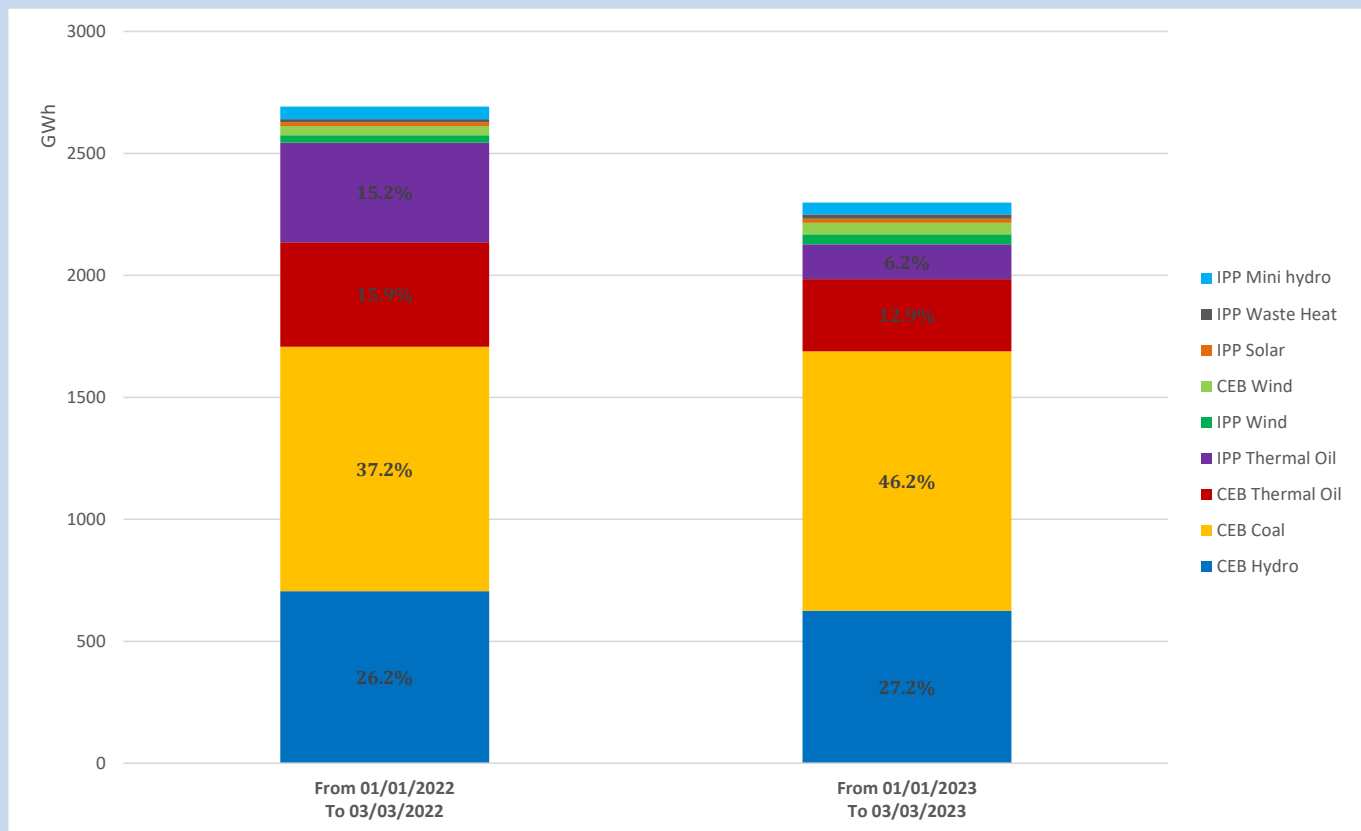
Solar Generation during

March 3, 2023

Based on Telemetered Power Stations only



Cumulative Dispatch Comparison with Last Year



Thermal Plant Fuel types

Power Station	Primary Fuel
CEB Thermal	
Sapugaskanda 1	Heavy Fuel
Sapugaskanda 2	Heavy Fuel
Kelanitissa Small Gas Turbines	Auto Diesel
GT 7 - Kelanitissa	Auto Diesel
Kelanitissa CCY	Naphtha or Diesel
Lakvijaya 1	Coal
Lakvijaya 2	Coal
Lakvijaya 3	Coal
Uthuru Janani	Heavy Fuel
Barge CEB	Heavy Fuel

Power Station	Primary Fuel
Private Thermal	
West Coast	Auto Diesel / Heavy Fuel

Major Incidents reported during the day

March 3, 2023

1) SUB-C 132/11kV T/F 01 & 02 tripped at 08:39hrs causing all feeders to be dead. Both T/f's were energized at 09:17hrs and all affected feeders were normalized at 09:40hrs.