

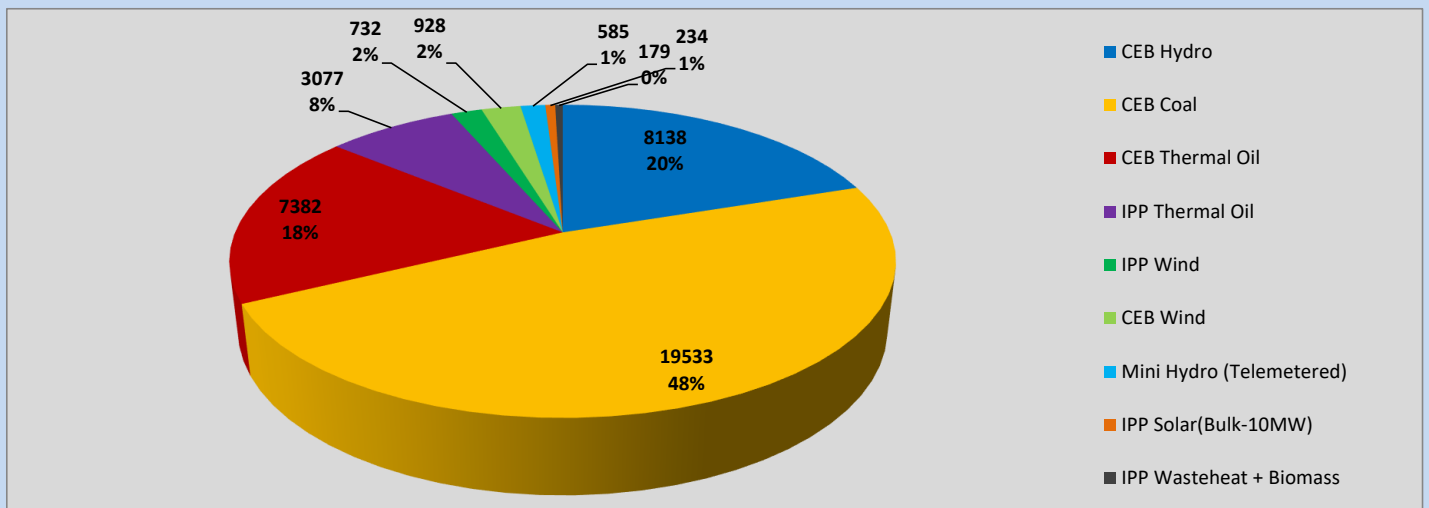
Generation and Reservoirs Statistics

March 2, 2023



PUBLIC UTILITIES COMMISSION OF SRI LANKA

Daily Generation Mix in MWh



Total Generation (Excluding estimated figures) =



40,788 MWh

Estimated figures of CEB generation report

Estimated unserved energy = 0.00 GWh
 Estimated Mini Hydro (Non telemetered) = 725 MWh
 Estimated IPP Solar PV (Bulk 1-10MW) = 304 MWh
 Estimated Solar Roof Top PV = 1490 MWh

Cumulative Dispatch

Following data excludes the contribution from roof top solar, non telemetered solar and mini hydro plants

For Current Month

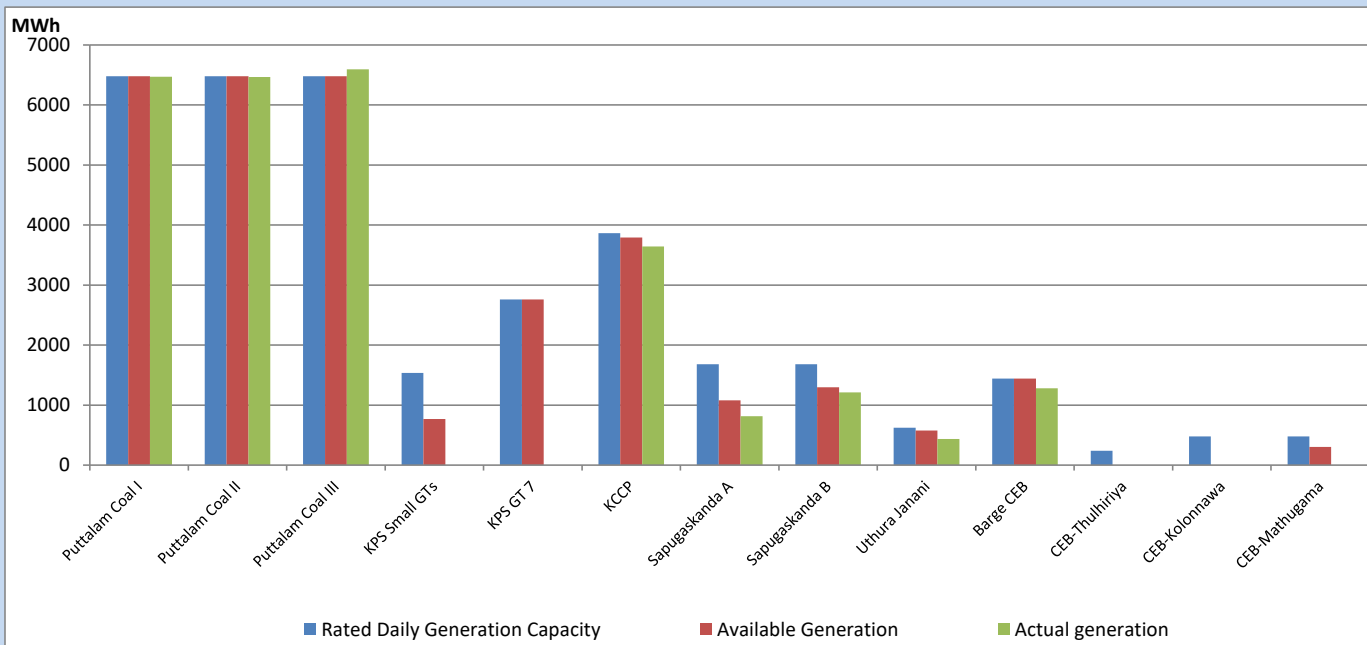
Category	Dispatch (GWh)	Percentage
CEB Hydro	16	19.69%
CEB Coal	39	47.80%
CEB Thermal Oil	12	14.63%
IPP Thermal	8	10.40%
SPP Wind	2	2.32%
CEB Wind	2	2.35%
Mini Hydro (Telemetered)	1	1.67%
IPP Solar (Bulk-10MW)	0	0.56%
IPP Wasteheat + BMP	0	0.59%
Total	82	

For Current Year

Category	Dispatch (GWh)	Percentage
CEB Hydro	617	27.35%
CEB Coal	1,043	46.21%
CEB Thermal Oil	289	12.80%
IPP Thermal	140	6.18%
SPP Wind	40	1.77%
CEB Wind	46	2.05%
Mini Hydro (Telemetered)	47	2.10%
IPP Solar (Bulk-10MW)	17	0.76%
IPP Wasteheat	18	0.78%
Total	2,258	

CEB owned Thermal Plant Dispatch

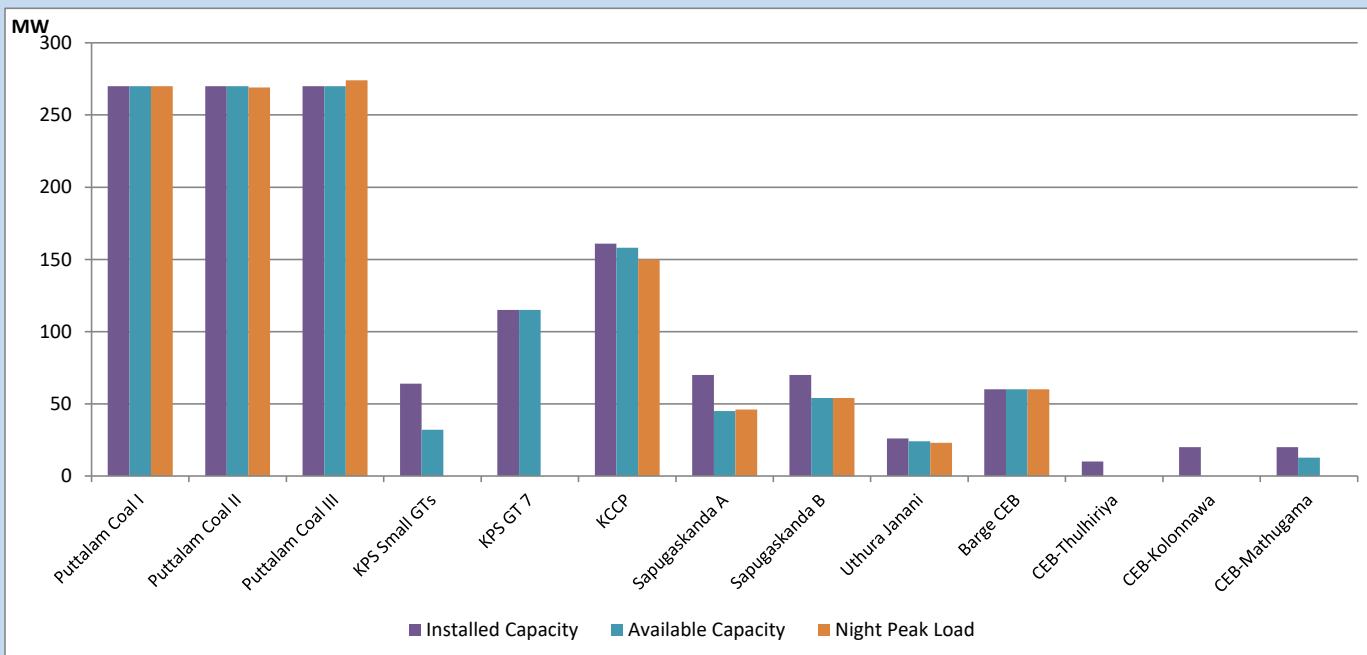
March 2, 2023



Available Generation is estimated based on plant availability at 6.00am on

March 3, 2023

CEB owned Thermal Plant Loading at the Night Peak

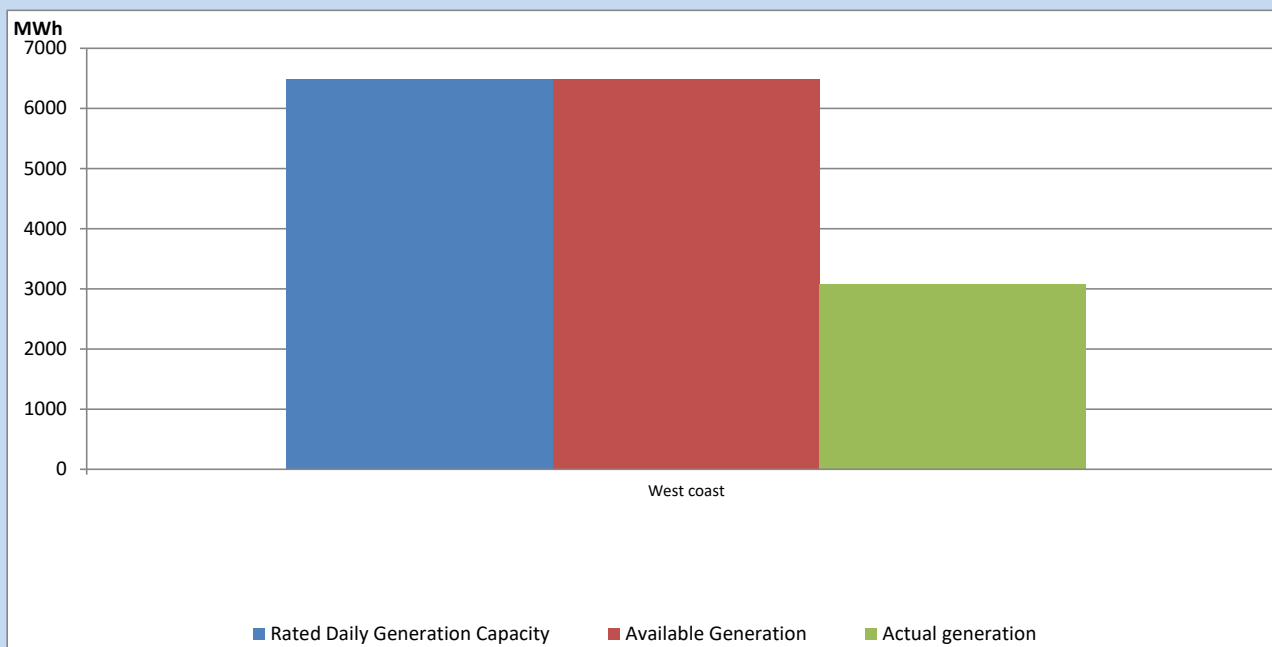


Note- Plant availability is recorded at 6.00 am on

March 3, 2023

IPP owned Thermal Plant Dispatch

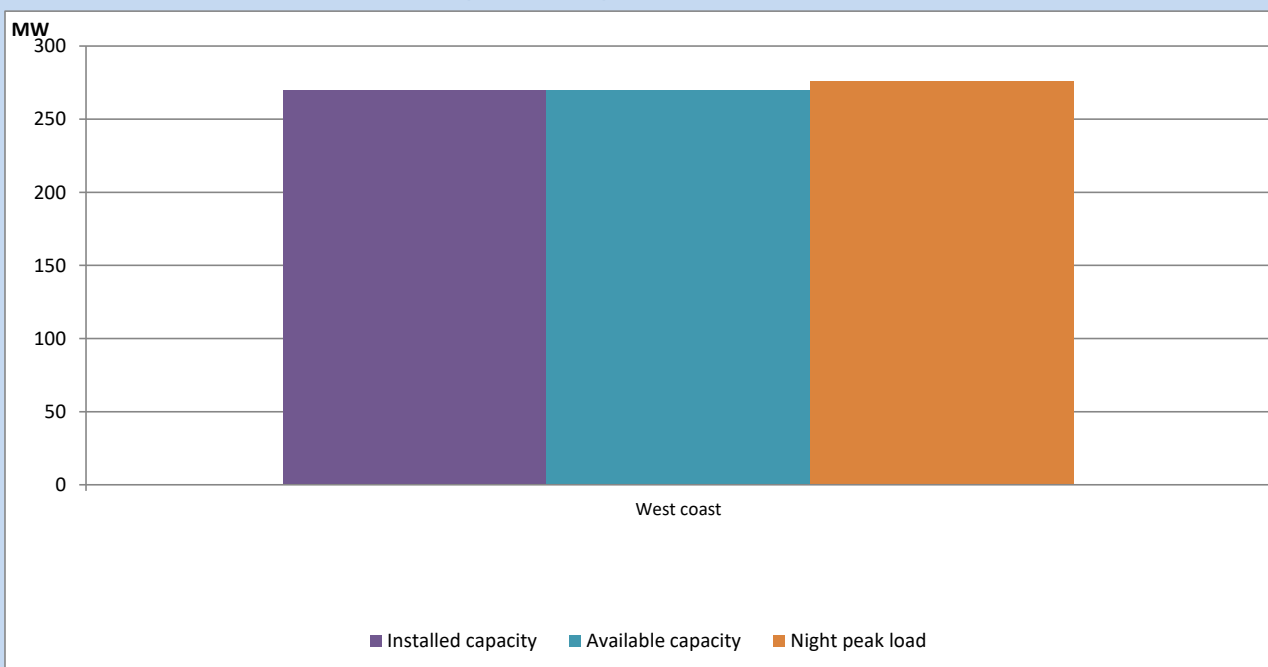
March 2, 2023



Available Generation is estimated based on plant availability at 6.00am on

March 3, 2023

IPP owned Thermal Plant Loading at the Night Peak

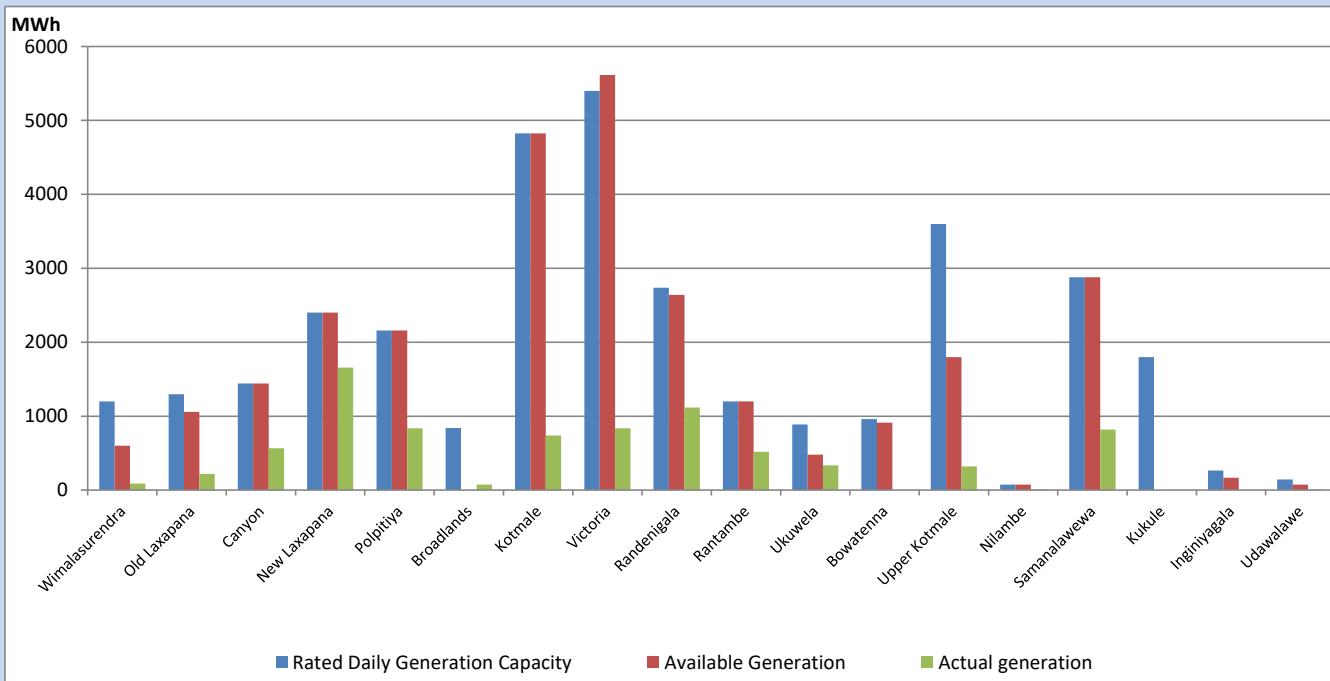


Note- Plant availability is recorded at 6.00 am on

March 3, 2023

Major Hydro Plant Dispatch

March 2, 2023

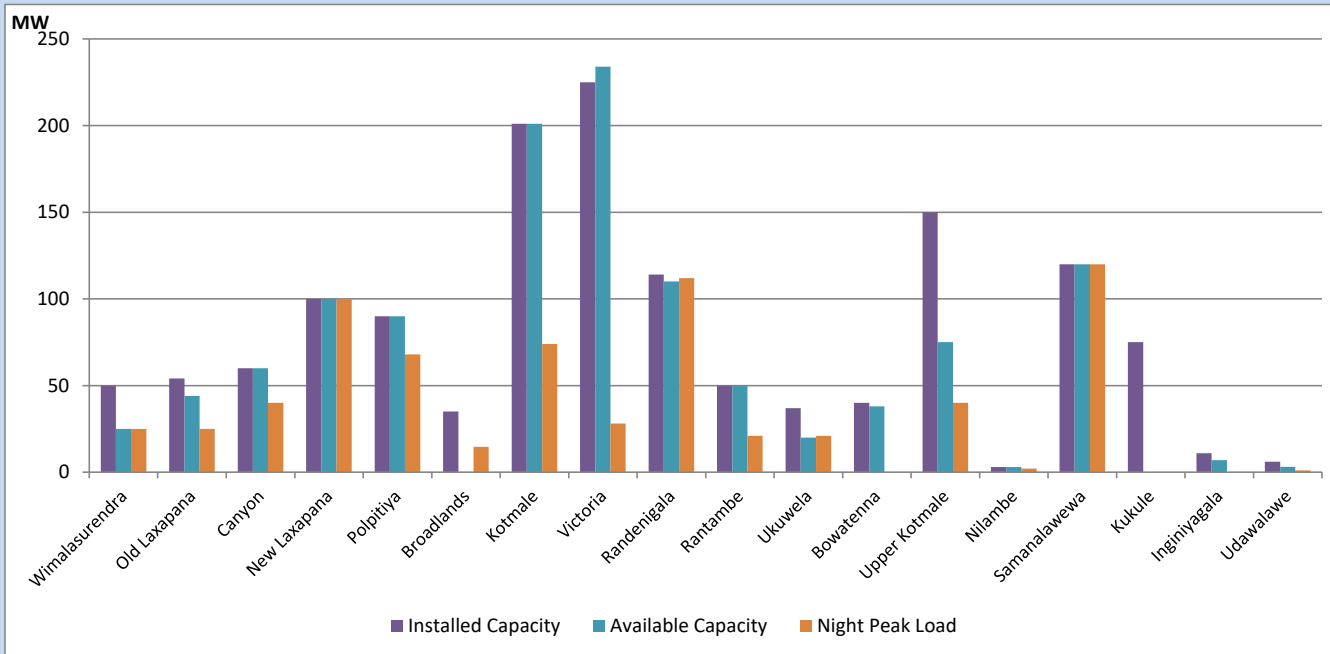


Available Generation is estimated based on plant availability at 6.00am on
Broadlands power plant is operating in the Commissioning Stage

March 3, 2023

Major Hydro Plant Loading at Night Peak

March 2, 2023



Note- Plant availability is recorded at 6.00 am on

March 3, 2023

Broadlands power plant is operating in the Commissioning Stage

Summary of Major Plant performance

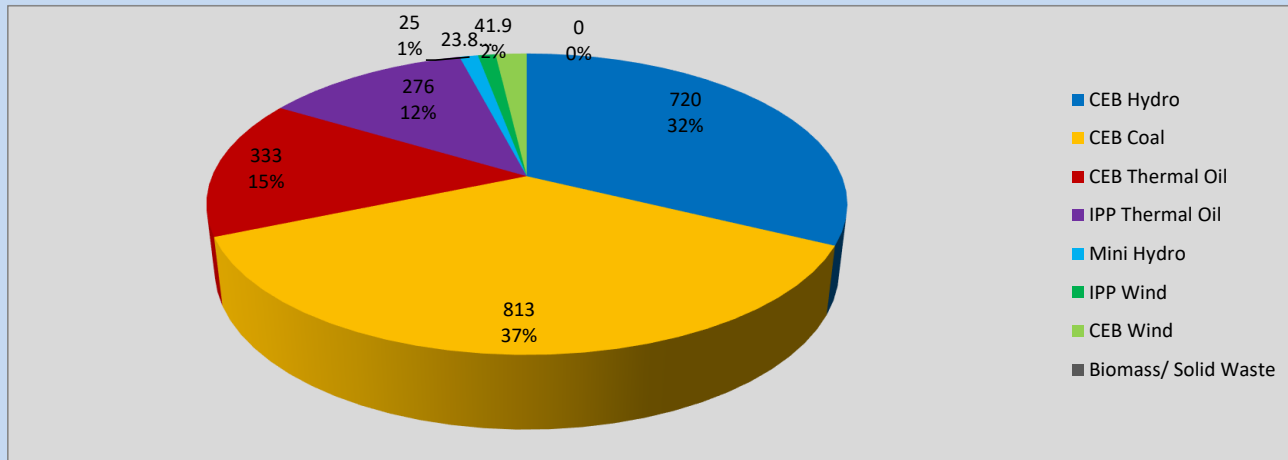
Plant	Installed Capacity	Plant Availability	Night peak Load	Plant Dispatch
	(MW)	(MW)	(MW)	(MWh)
Wimalasurendra	50	25	25	88
Old Laxapana	54	44	25	218
Canyon	60	60	40	564
New Laxapana	100	100	100	1,658
Polpitiya	90	90	68	837
Broadlands	35	0	15	74
Kotmale	201	201	74	740
Victoria	225	234	28	837
Randenigala	114	110	112	1,115
Rantambe	50	50	21	517
Ukuwela	37	20	21	335
Bowatenna	40	38	0	0
Upper Kotmale	150	75	40	318
Nilambe	3	3	2	11
Samanalawewa	120	120	120	817
Kukule	75	0	0	0
Inginiyagala	11	7	0	0
Udawalawe	6	3	1	9
Puttalam Coal I	270	270	270	6,470
Puttalam Coal II	270	270	269	6,467
Puttalam Coal III	270	270	274	6,596
KPS Small GTs	64	32	0	0
KPS GT 7	115	115	0	0
KCCP	161	158	150	3,643
Sapugaskanda A	70	45	46	816
Sapugaskanda B	70	54	54	1,210
Uthura Janani	26	24	23	435
Barge CEB	60	60	60	1,278
CEB-Thulhiriya	10	0	0	0
CEB-Kolonnawa	20	0	0	0
CEB-Mathugama	20	13	0	0
ACE Matara	24	0	0	0
Asia Power	50	0	0	0
Sojitz Kelanitissa	163	0	0	0
West Coast	270	270	276	3,077
Nothern Power	36	0	0	0
ACE Embilipitiya	93	0	0	0
Total	3,483	2,761	2,204	40,788

Plant availability is the availability recorded at 6 am on

March 3, 2023

Contribution to the Night Peak in MW

March 2, 2023

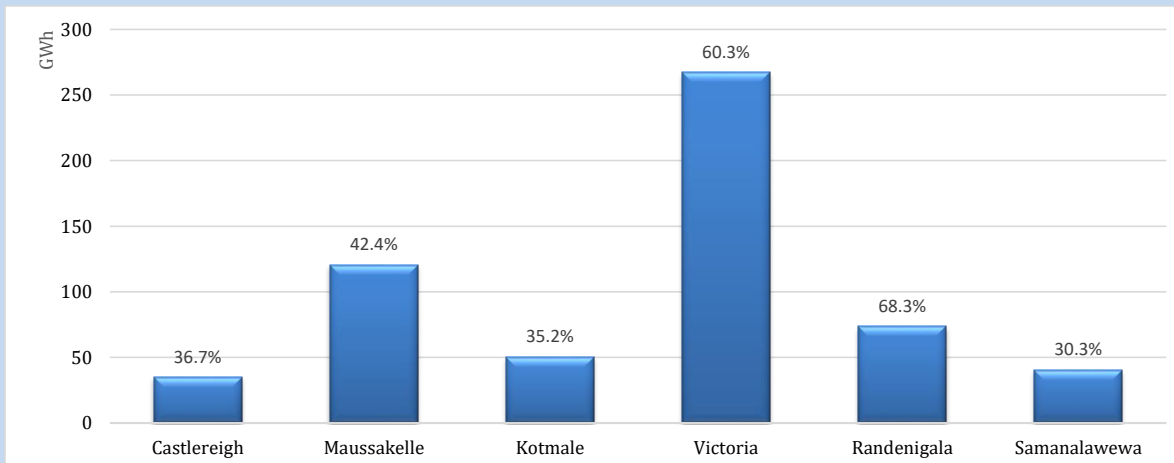


Night Peak*	2,232 MW
Day Peak	1,878 MW
Minimum Demand	1,189 MW

Above figures are excluding contribution from roof top solar, non telemetered solar and mini hydro plants

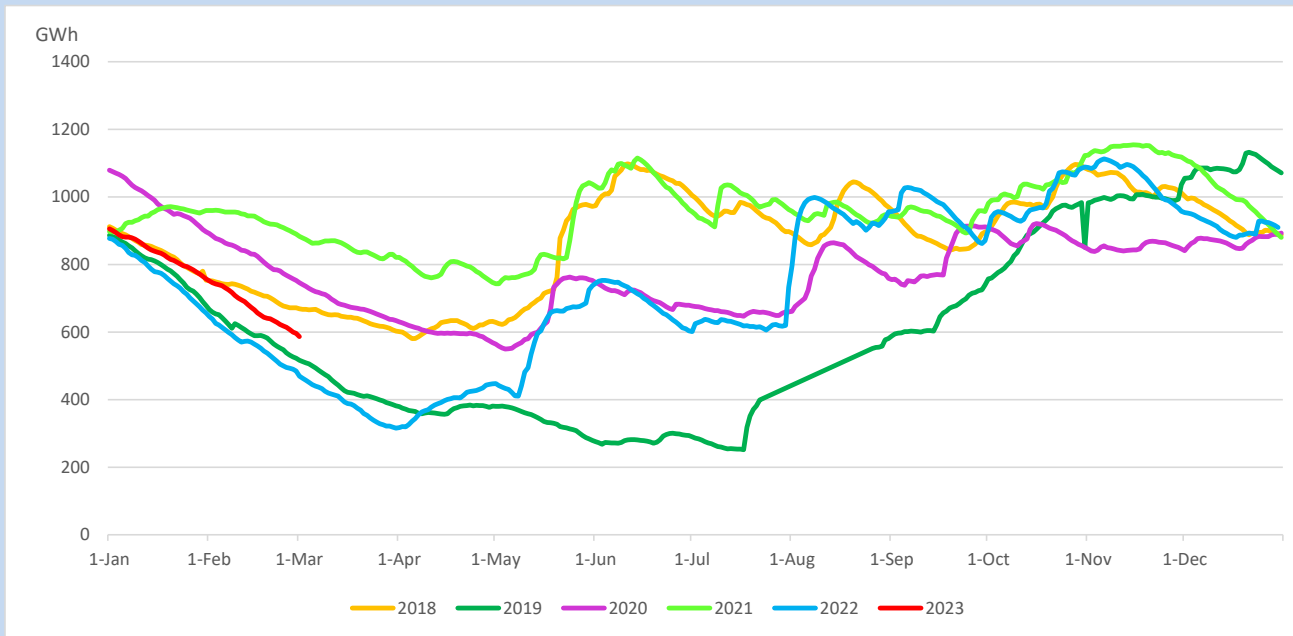
Reservoir Levels -

as at 06.00 Hr on March 3, 2023

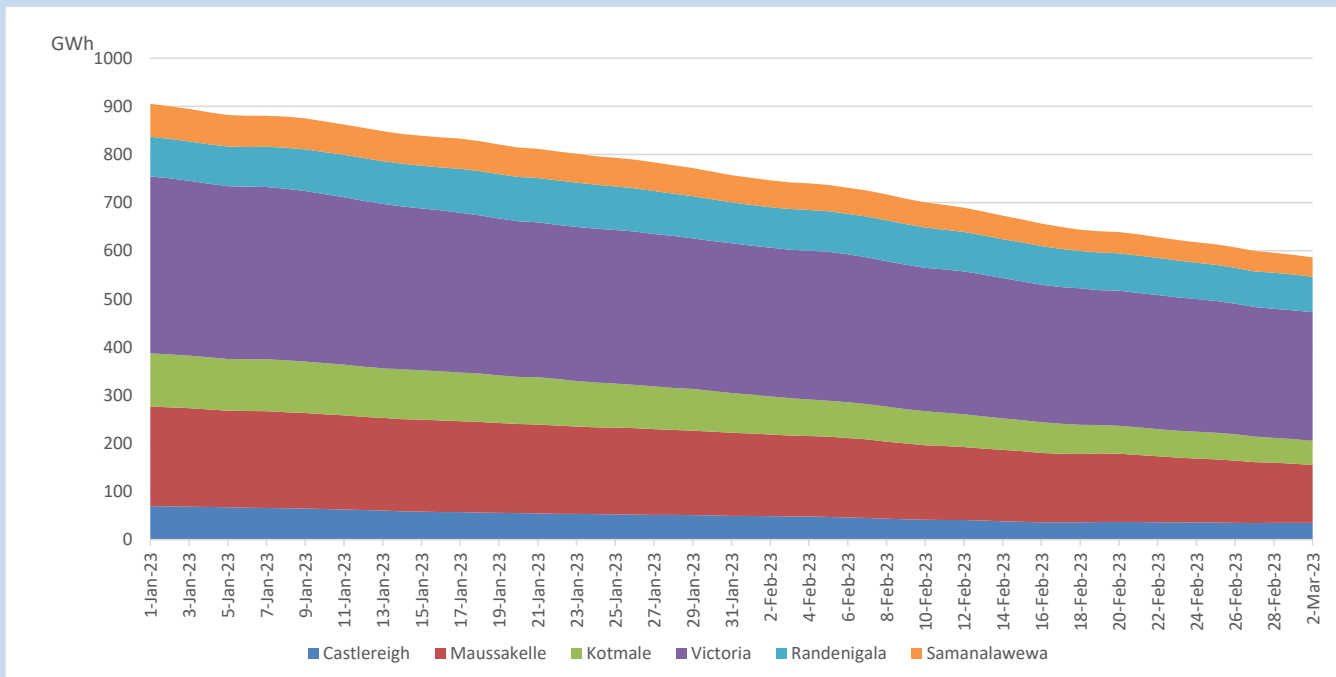


Total Reservoir Level	586.5 GWh
% of Total capacity	48.6%

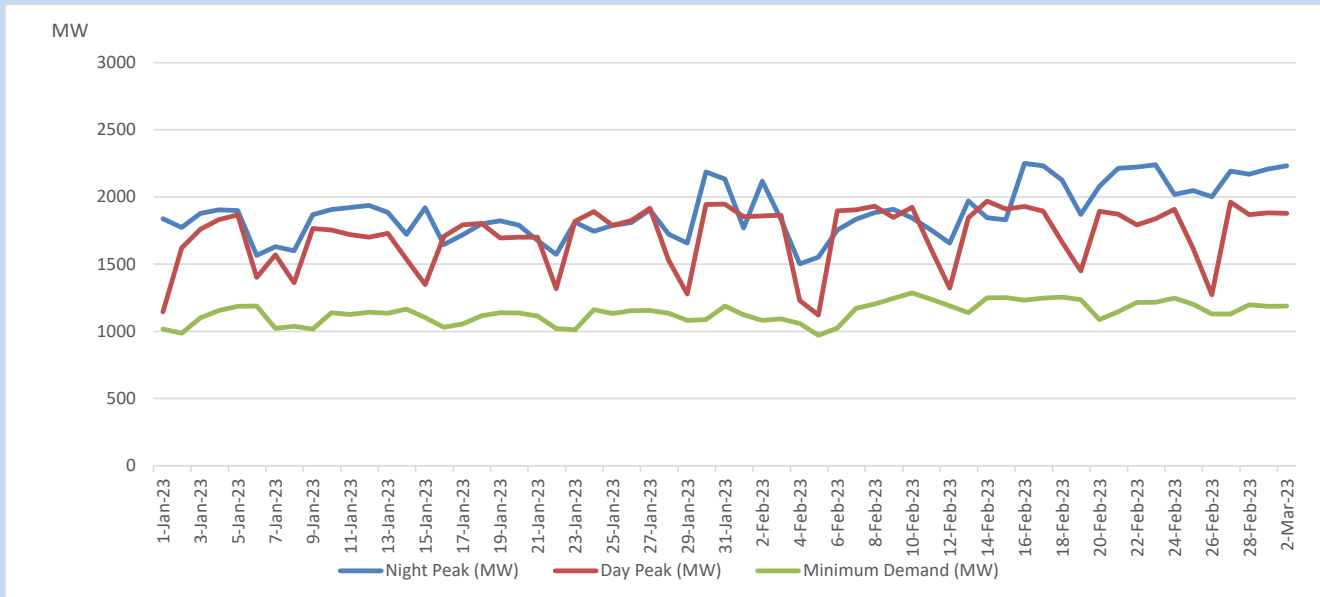
Comparison of Total Reservoir Storage Levels with Past Years



Variation of Major Hydro Reservoir Levels in the current year (GWh)



Variation of Demand during the current year

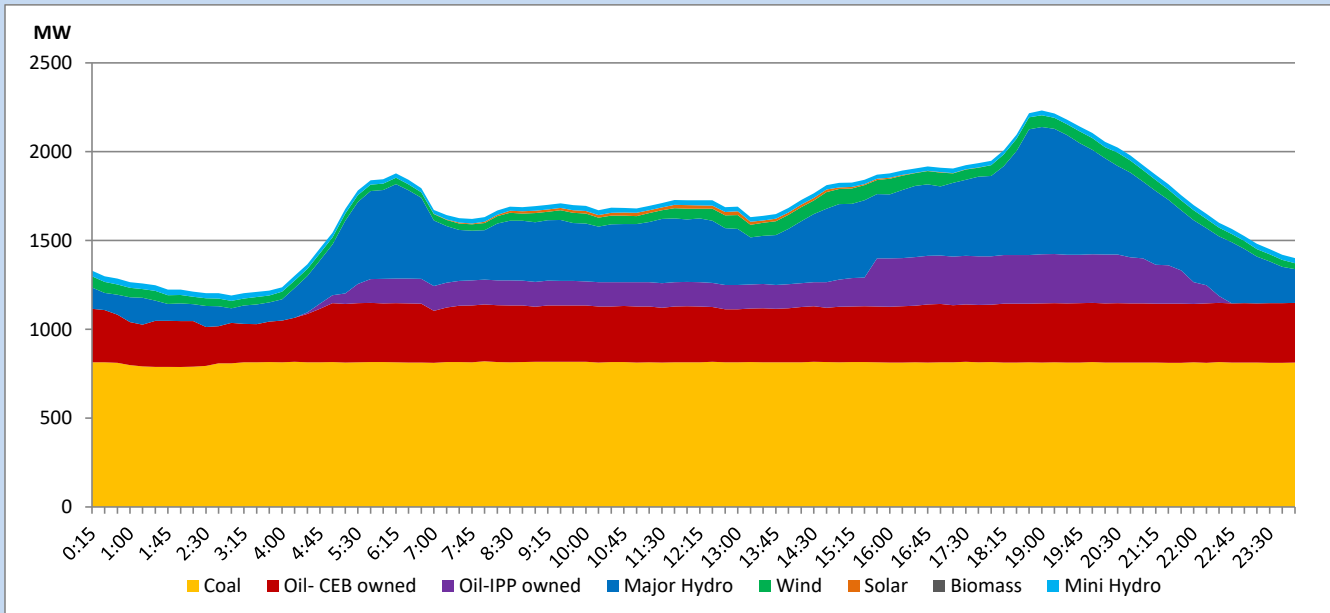


The above figures are excluding contribution from roof top solar, non telemetered solar and mini hydro plants

Daily Load Curve

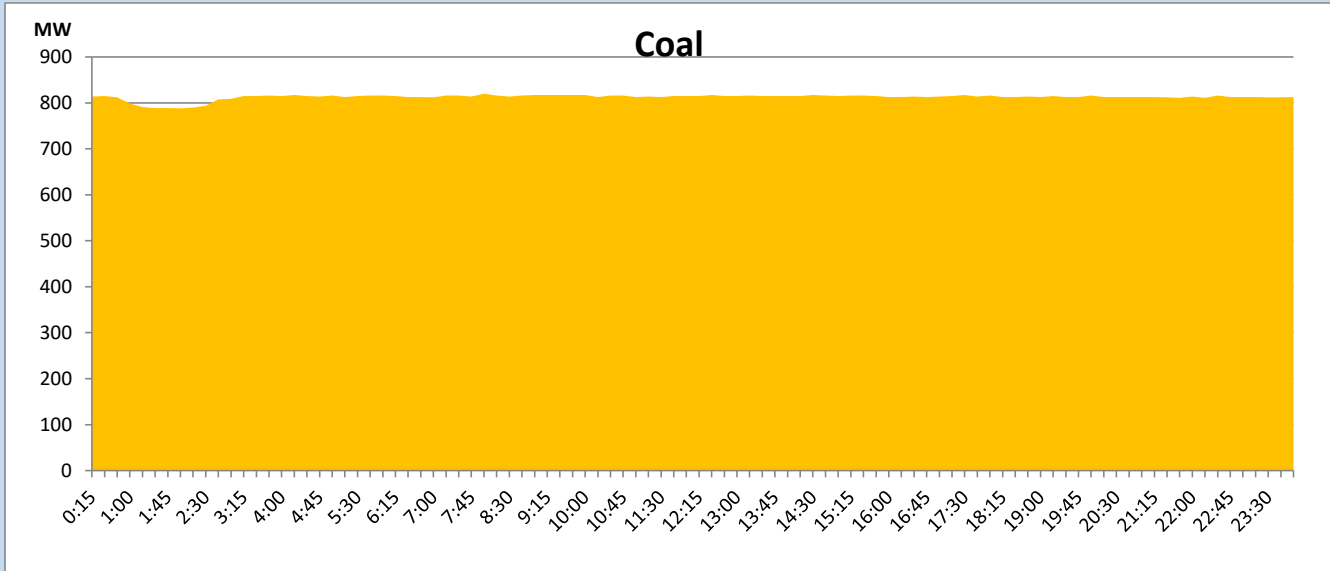
March 2, 2023

Solar and wind data is based on Telemetered Power Stations only



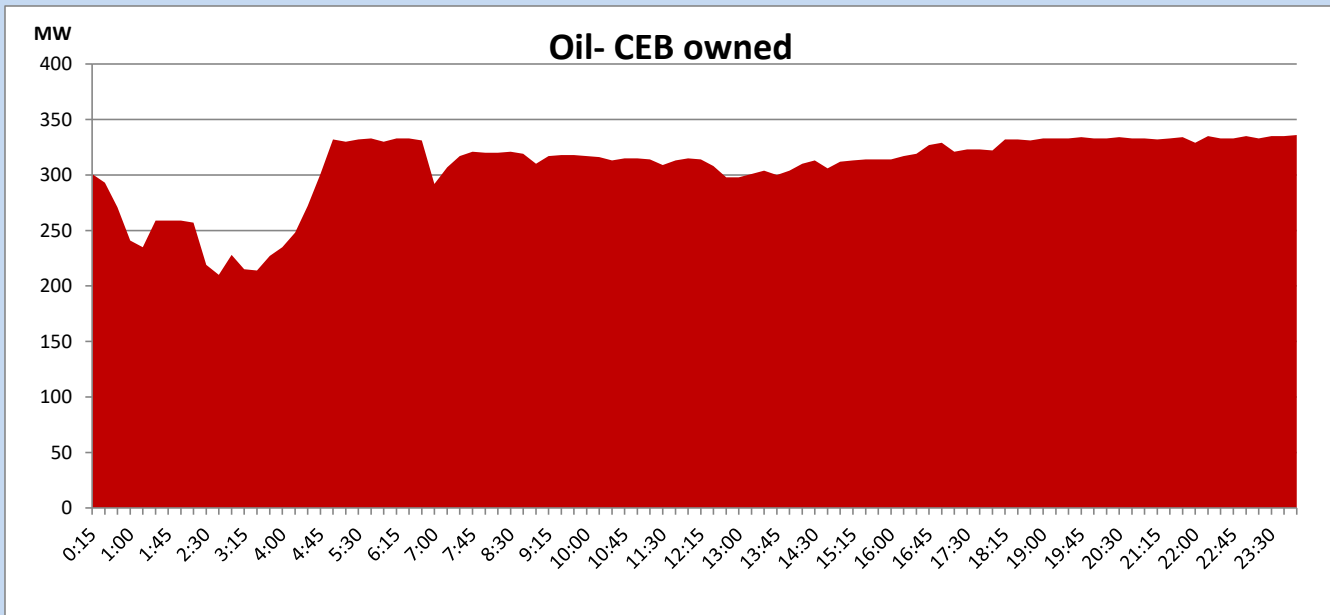
Coal Generation during

March 2, 2023



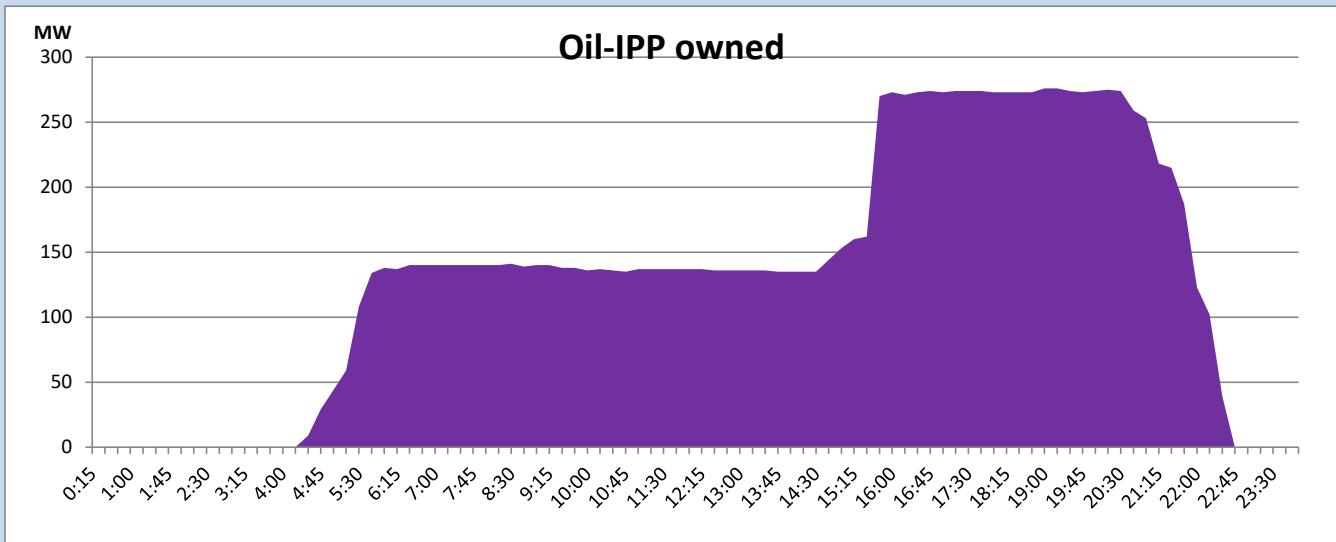
CEB Oil Plant Generation during

March 2, 2023



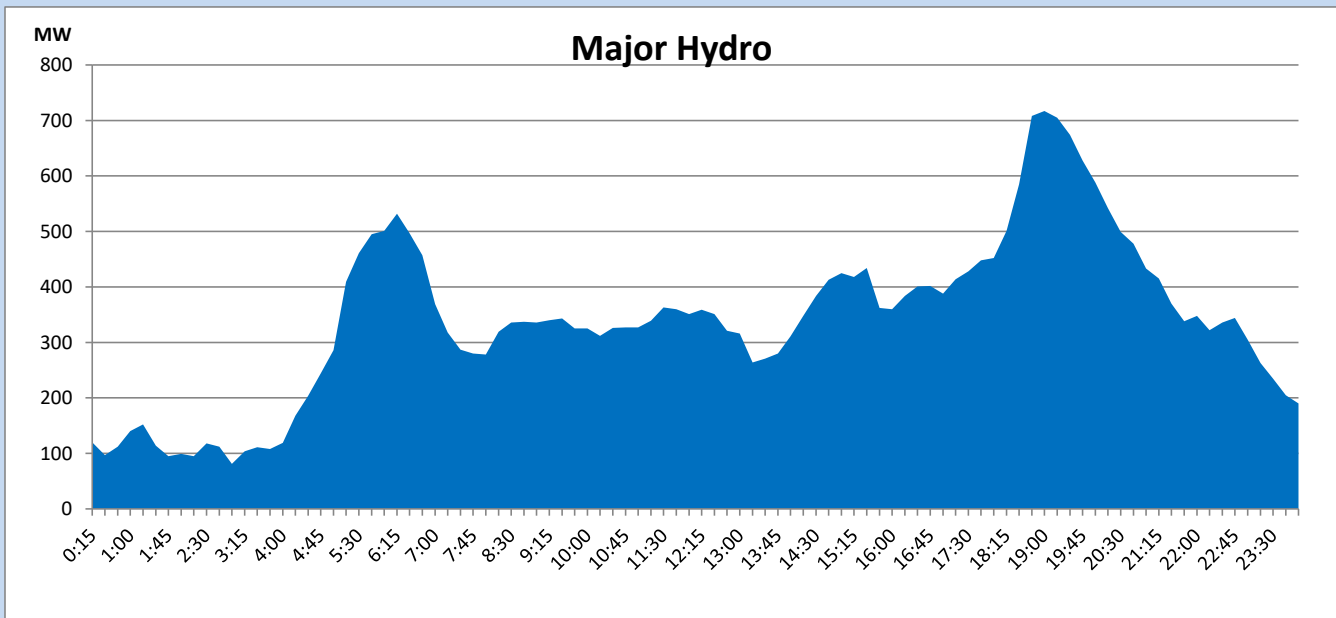
IPP Oil Plant Generation during

March 2, 2023



Major Hydro Generation during

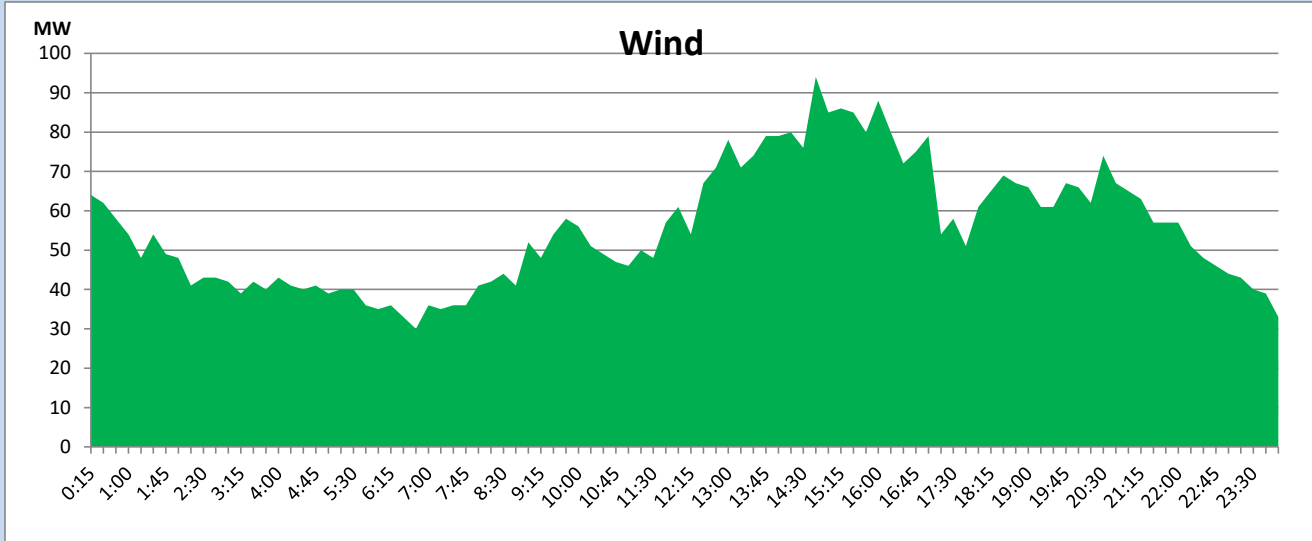
March 2, 2023



Wind Generation during

March 2, 2023

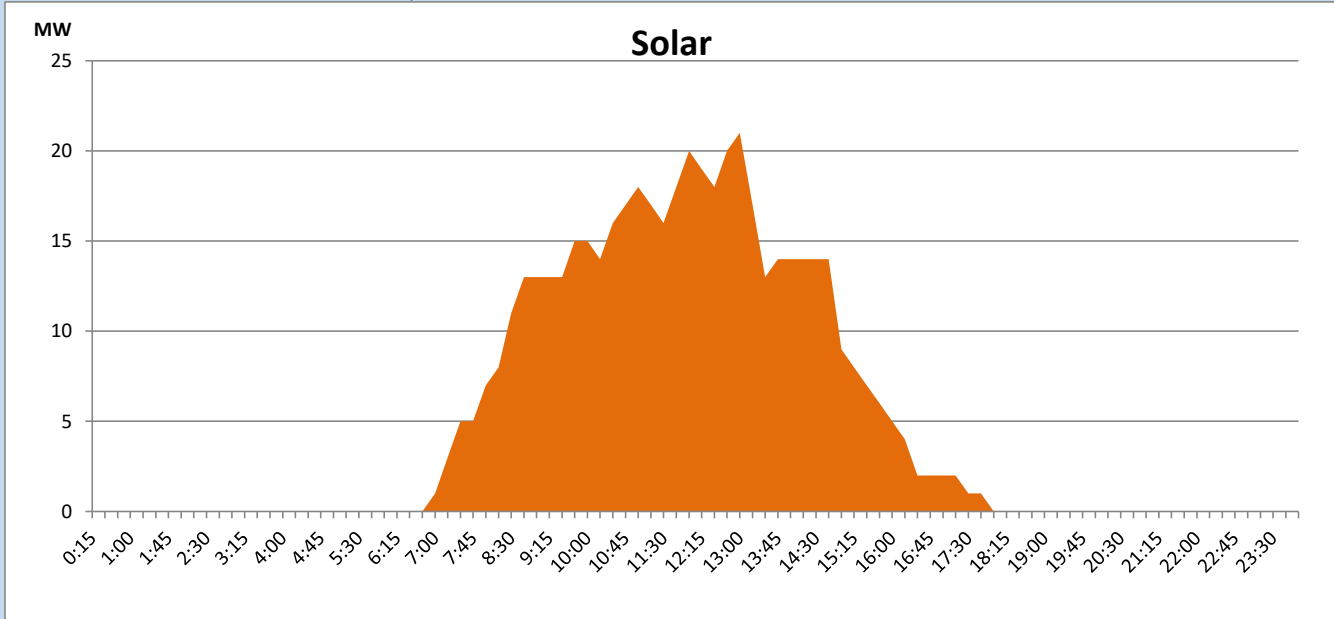
Based on Telemetered Power Stations only



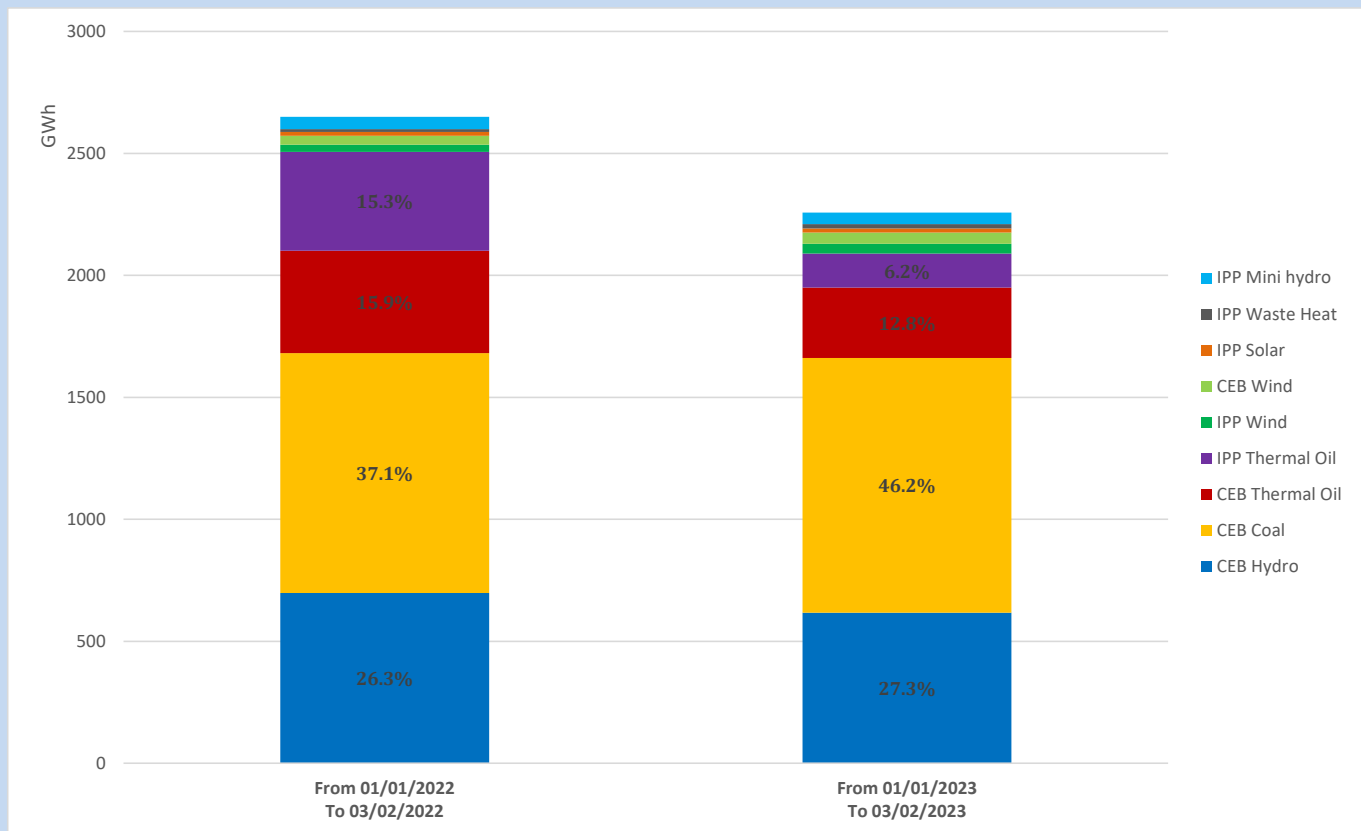
Solar Generation during

March 2, 2023

Based on Telemetered Power Stations only



Cumulative Dispatch Comparison with Last Year



Thermal Plant Fuel types

Power Station	Primary Fuel
CEB Thermal	
Sapugaskanda 1	Heavy Fuel
Sapugaskanda 2	Heavy Fuel
Kelanitissa Small Gas Turbines	Auto Diesel
GT 7 - Kelanitissa	Auto Diesel
Kelanitissa CCY	Naphtha or Diesel
Lakvijaya 1	Coal
Lakvijaya 2	Coal
Lakvijaya 3	Coal
Uthuru Janani	Heavy Fuel
Barge CEB	Heavy Fuel

Power Station	Primary Fuel
Private Thermal	
West Coast	Auto Diesel / Heavy Fuel

Major Incidents reported during the day

March 2, 2023

Nil.