

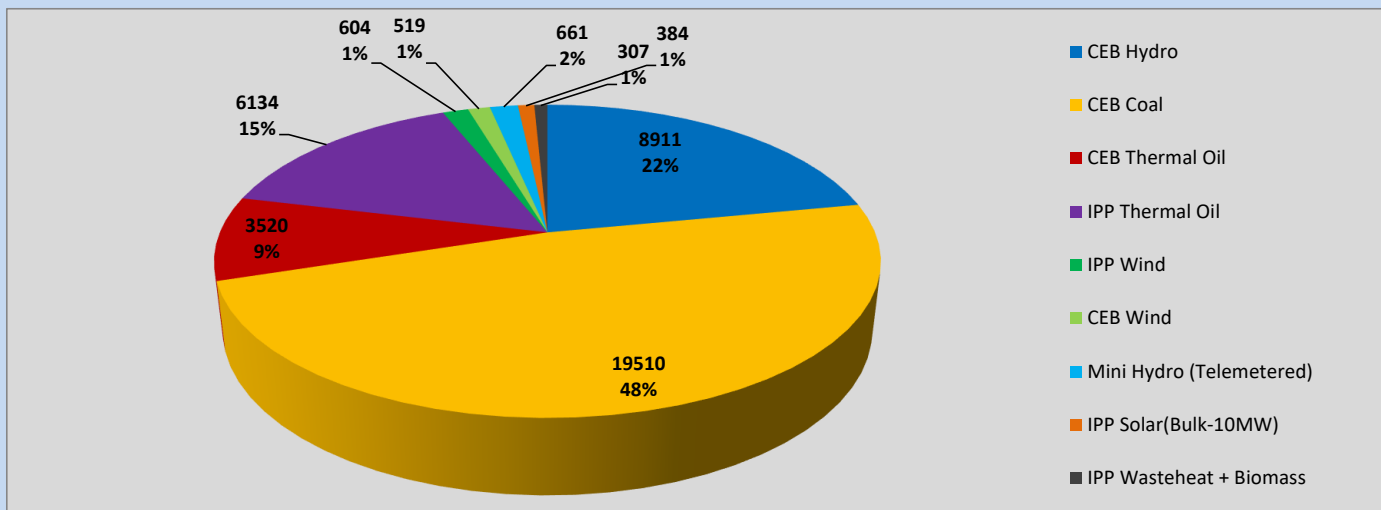
Generation and Reservoirs Statistics

February 24, 2023



PUBLIC UTILITIES COMMISSION OF SRI LANKA

Daily Generation Mix in MWh



Total Generation (Excluding estimated figures) =

40,550 MWh

Estimated figures of CEB generation report

Estimated unserved energy = 0.00 GWh
 Estimated Mini Hydro (Non telemetered) = 1219 MWh
 Estimated IPP Solar PV (Bulk 1-10MW) = 304 MWh
 Estimated Solar Roof Top PV = 1450 MWh

Cumulative Dispatch

Following data excludes the contribution from roof top solar, non telemetered solar and mini hydro plants

For Current Month

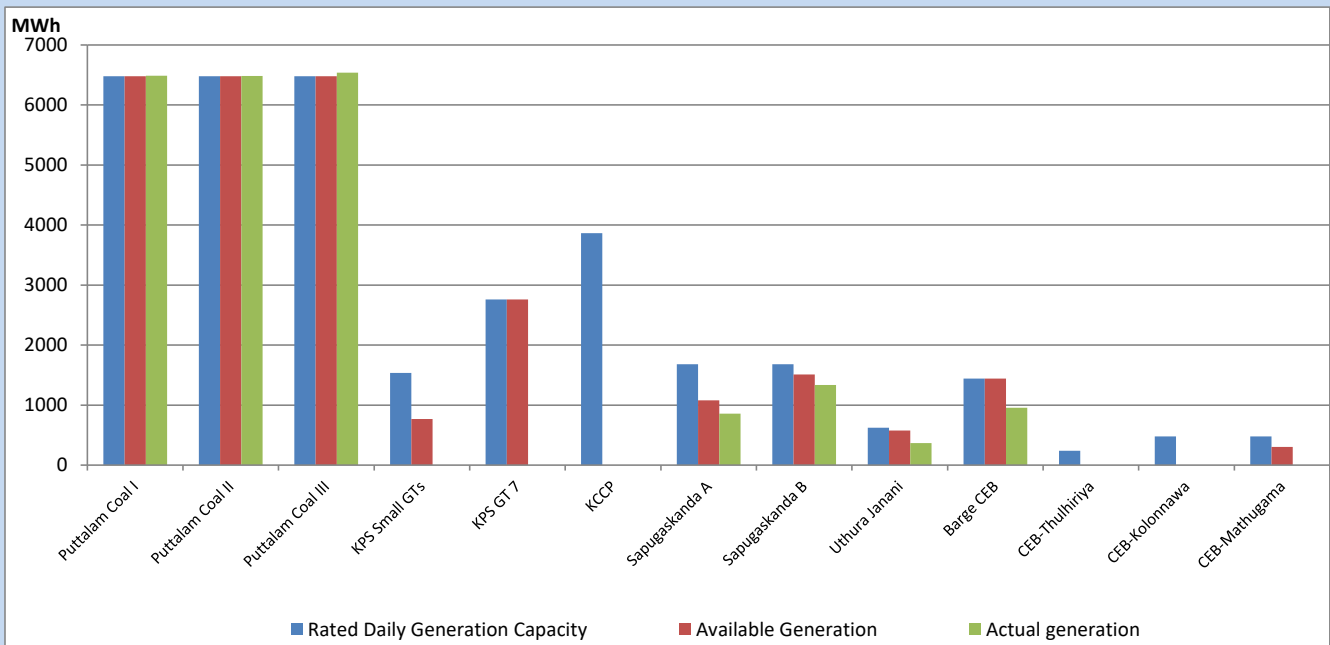
Category	Dispatch (GWh)	Percentage
CEB Hydro	237	26.03%
CEB Coal	460	50.54%
CEB Thermal Oil	91	9.99%
IPP Thermal	62	6.78%
SPP Wind	14	1.49%
CEB Wind	16	1.75%
Mini Hydro (Telemetered)	16	1.75%
IPP Solar (Bulk-10MW)	7	0.77%
IPP Wasteheat + BMP	8	0.89%
Total	911	

For Current Year

Category	Dispatch (GWh)	Percentage
CEB Hydro	567	28.00%
CEB Coal	927	45.78%
CEB Thermal Oil	264	13.02%
IPP Thermal	118	5.80%
SPP Wind	35	1.71%
CEB Wind	41	2.03%
Mini Hydro (Telemetered)	43	2.13%
IPP Solar (Bulk-10MW)	15	0.76%
IPP Wasteheat	16	0.77%
Total	2,026	

CEB owned Thermal Plant Dispatch

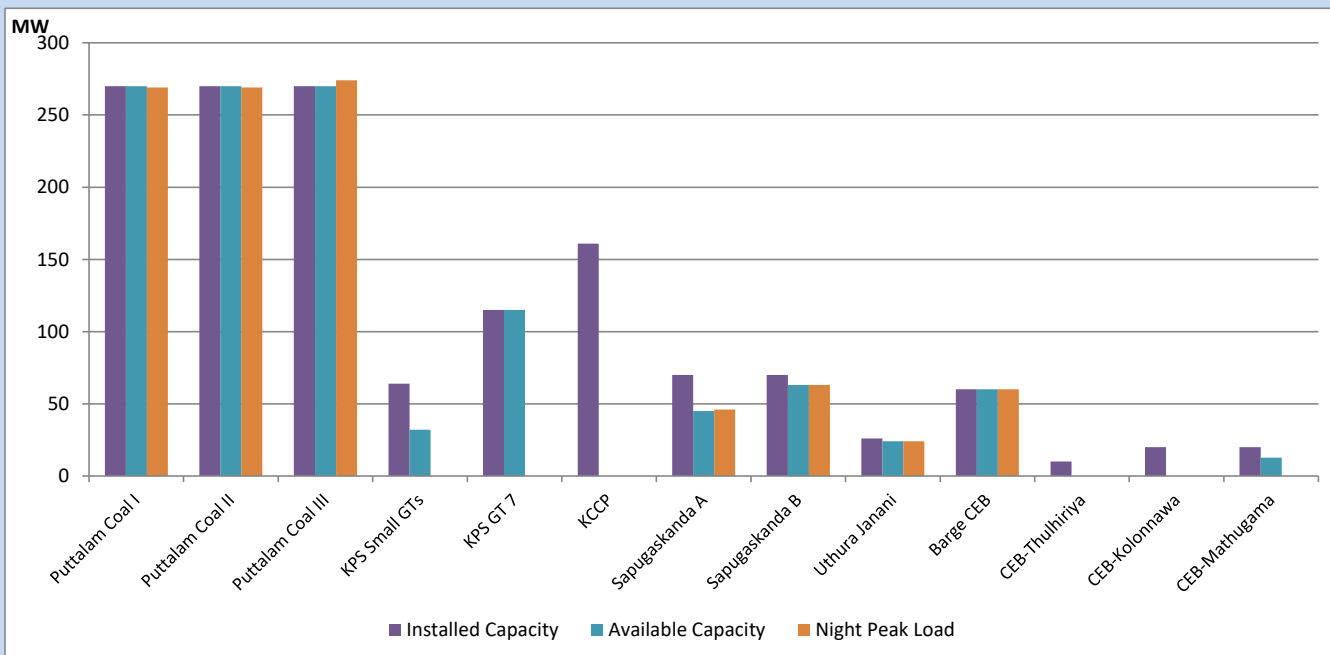
February 24, 2023



Available Generation is estimated based on plant availability at 6.00am on

February 25, 2023

CEB owned Thermal Plant Loading at the Night Peak

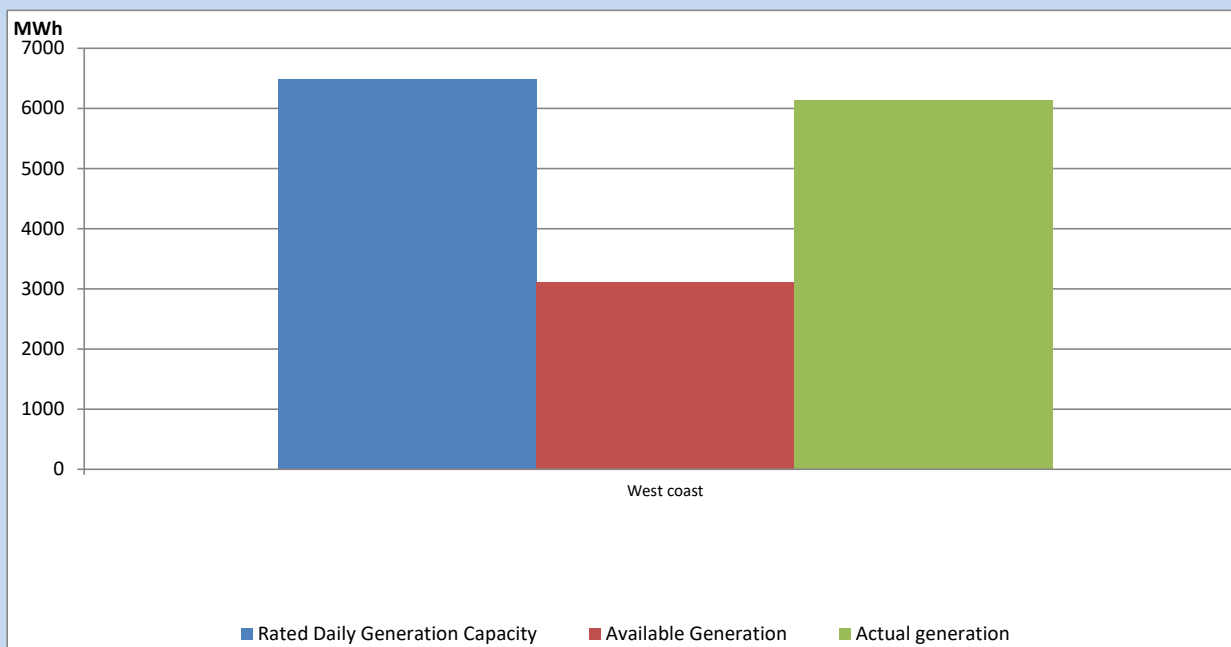


Note- Plant availability is recorded at 6.00 am on

February 25, 2023

IPP owned Thermal Plant Dispatch

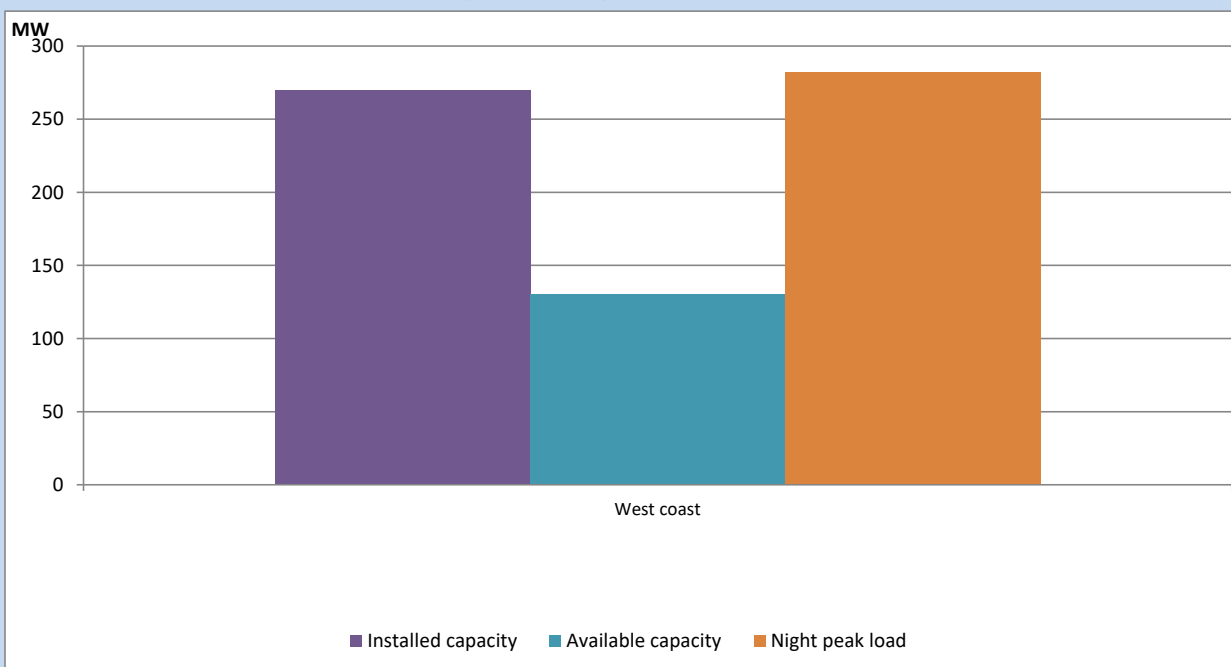
February 24, 2023



Available Generation is estimated based on plant availability at 6.00am on

February 25, 2023

IPP owned Thermal Plant Loading at the Night Peak

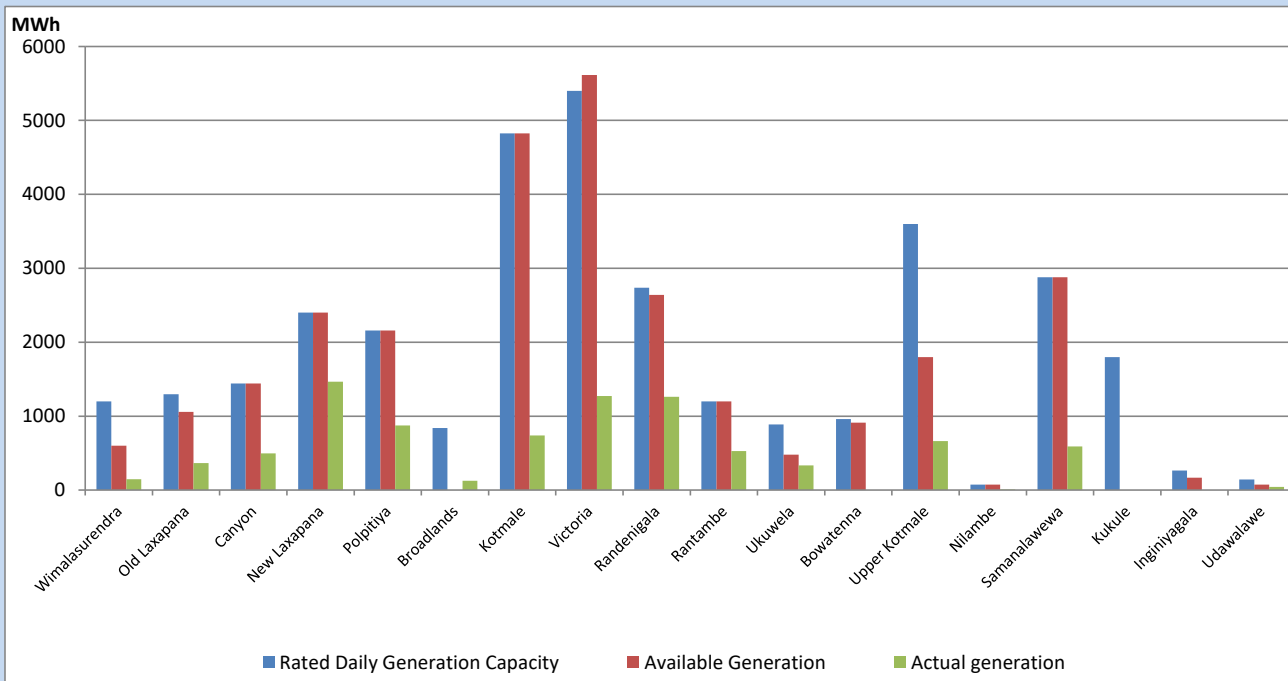


Note- Plant availability is recorded at 6.00 am on

February 25, 2023

Major Hydro Plant Dispatch

February 24, 2023

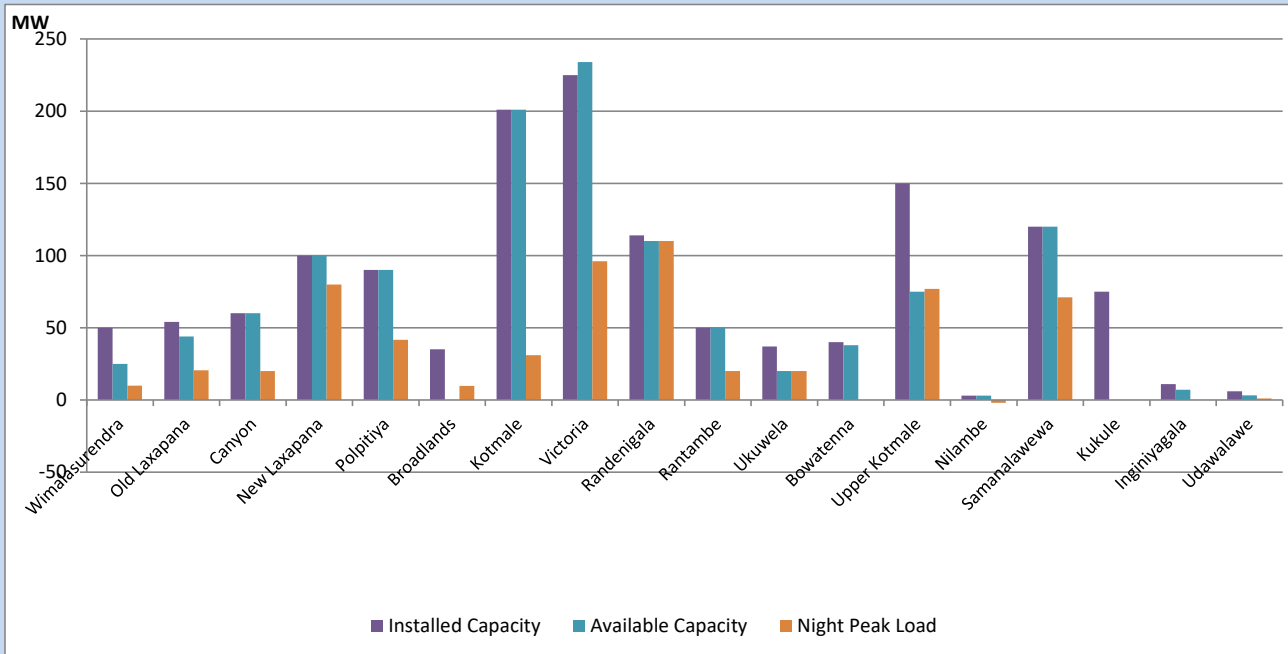


Available Generation is estimated based on plant availability at 6.00am on
Broadlands power plant is operating in the Commissioning Stage

February 25, 2023

Major Hydro Plant Loading at Night Peak

February 24, 2023



Note- Plant availability is recorded at 6.00 am on
Broadlands power plant is operating in the Commissioning Stage

February 25, 2023

Summary of Major Plant performance

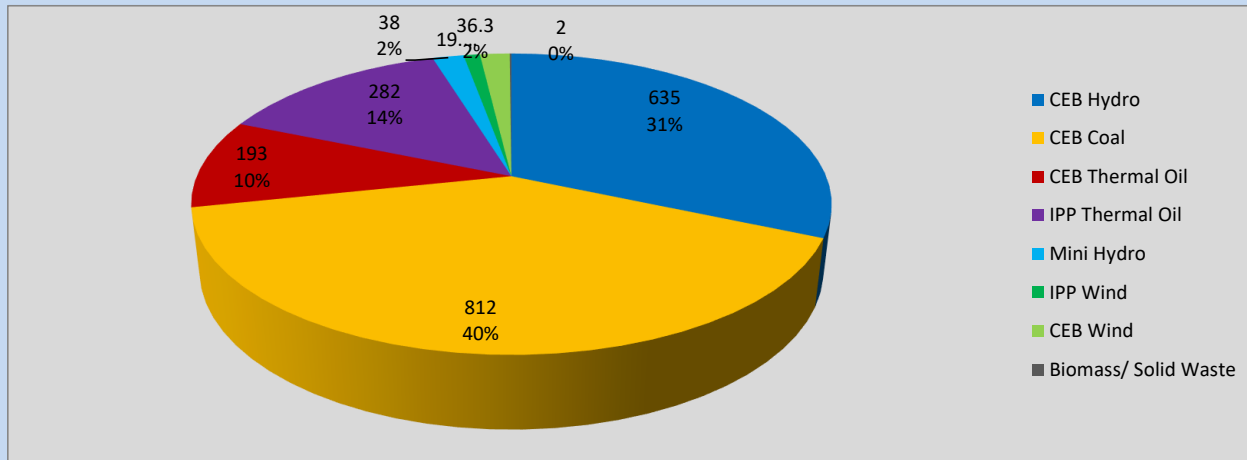
Plant	Installed Capacity	Plant Availability	Night peak Load	Plant Dispatch
	(MW)	(MW)	(MW)	(MWh)
Wimalasurendra	50	25	10	145
Old Laxapana	54	44	21	365
Canyon	60	60	20	497
New Laxapana	100	100	80	1,467
Polpitiya	90	90	42	872
Broadlands	35	0	10	127
Kotmale	201	201	31	740
Victoria	225	234	96	1,272
Randenigala	114	110	110	1,263
Rantambe	50	50	20	526
Ukuwela	37	20	20	335
Bowatenna	40	38	0	0
Upper Kotmale	150	75	77	662
Nilambe	3	3	-2	7
Samanalawewa	120	120	71	591
Kukule	75	0	0	0
Inginiyagala	11	7	0	0
Udawalawe	6	3	1	42
Puttalam Coal I	270	270	269	6,487
Puttalam Coal II	270	270	269	6,485
Puttalam Coal III	270	270	274	6,538
KPS Small GTs	64	32	0	0
KPS GT 7	115	115	0	0
KCCP	161	0	0	0
Sapugaskanda A	70	45	46	859
Sapugaskanda B	70	63	63	1,337
Uthura Janani	26	24	24	367
Barge CEB	60	60	60	957
CEB-Thulhiriya	10	0	0	0
CEB-Kolonnawa	20	0	0	0
CEB-Mathugama	20	13	0	0
ACE Matara	24	0	0	0
Asia Power	50	0	0	0
Sojitz Kelanitissa	163	0	0	0
West Coast	270	130	282	6,134
Nothern Power	36	0	0	0
ACE Embilipitiya	93	0	0	0
Total	3,483	2,472	1,989	40,550

Plant availability is the availability recorded at 6 am on

February 25, 2023

Contribution to the Night Peak in MW

February 24, 2023

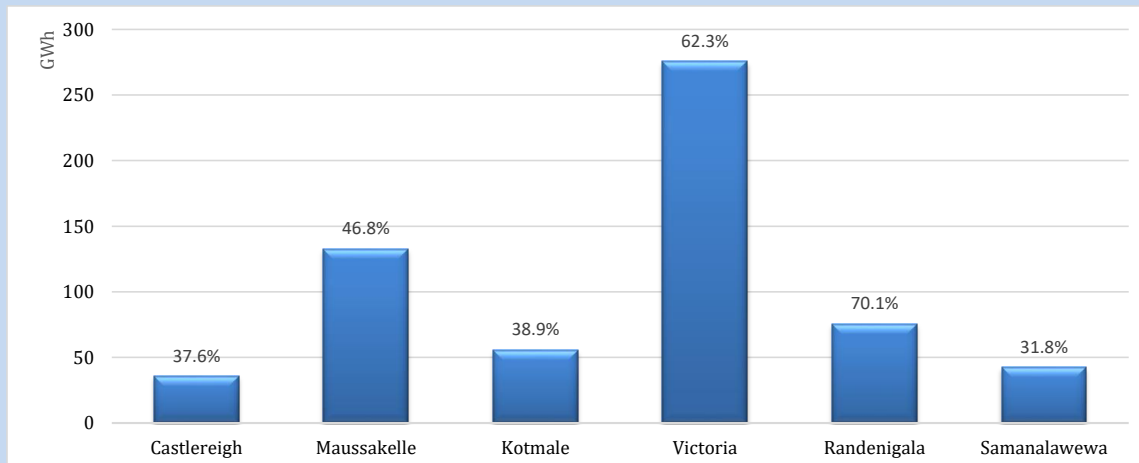


Night Peak*	2,018 MW
Day Peak	1,908 MW
Minimum Demand	1,247 MW

Above figures are excluding contribution from roof top solar, non telemetered solar and mini hydro plants

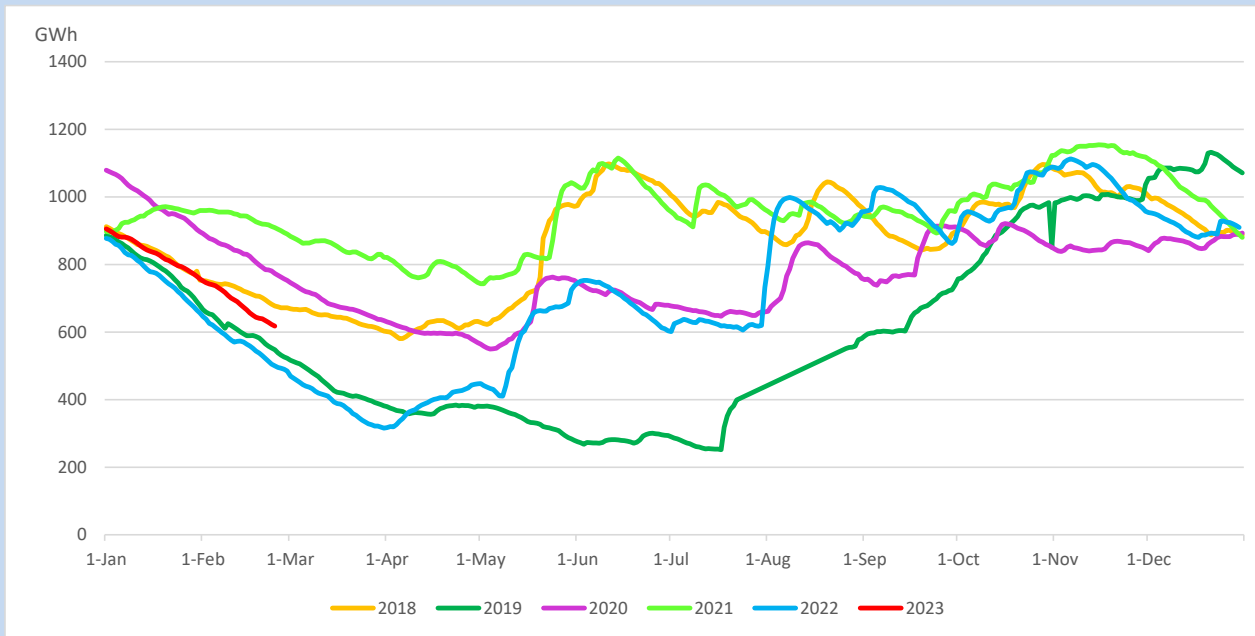
Reservoir Levels -

as at 06.00 Hr on February 25, 2023

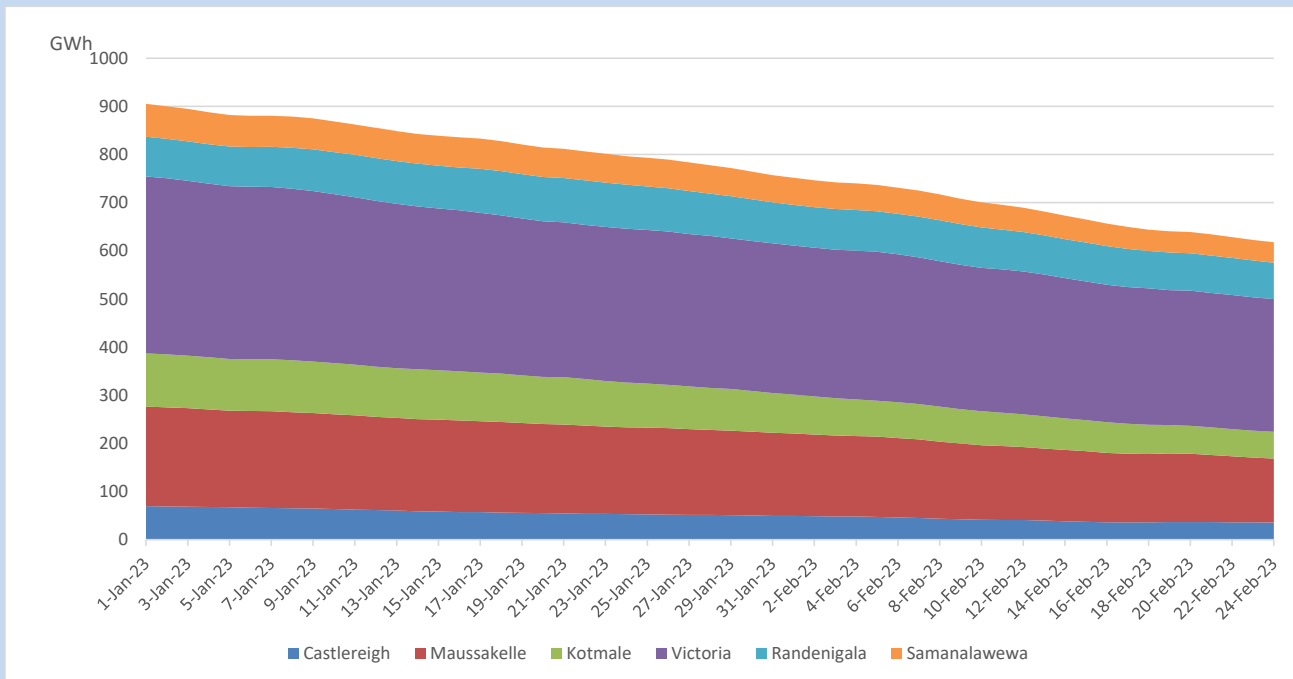


Total Reservoir Level	617.6 GWh
% of Total capacity	51.2%

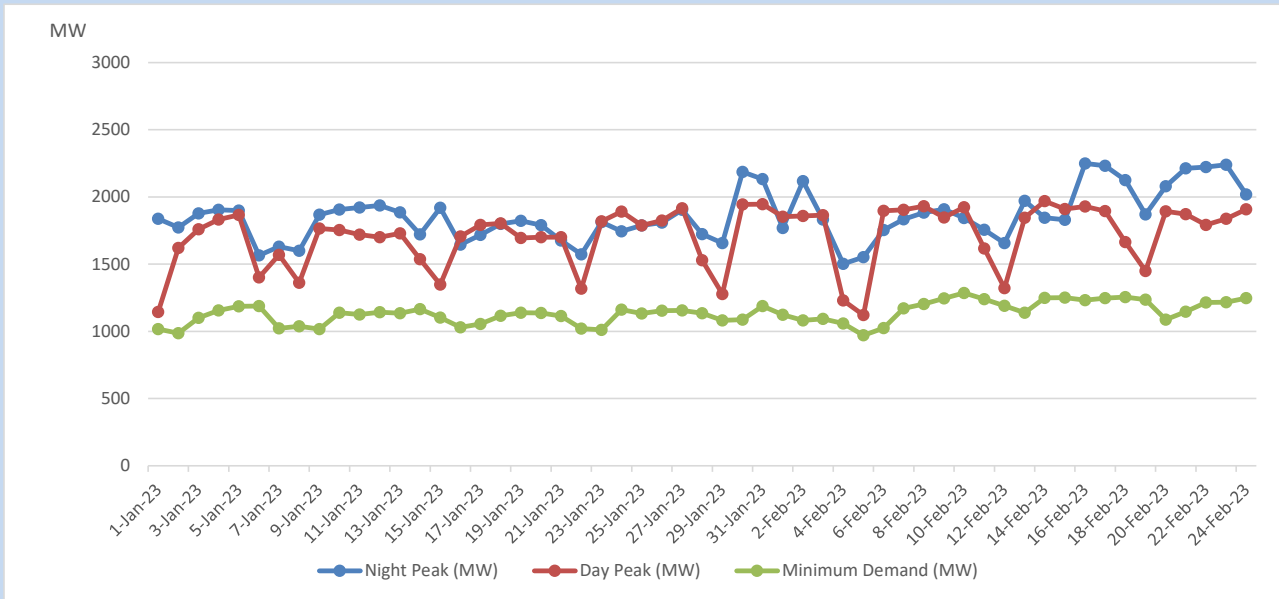
Comparison of Total Reservoir Storage Levels with Past Years



Variation of Major Hydro Reservoir Levels in the current year (GWh)



Variation of Demand during the current year

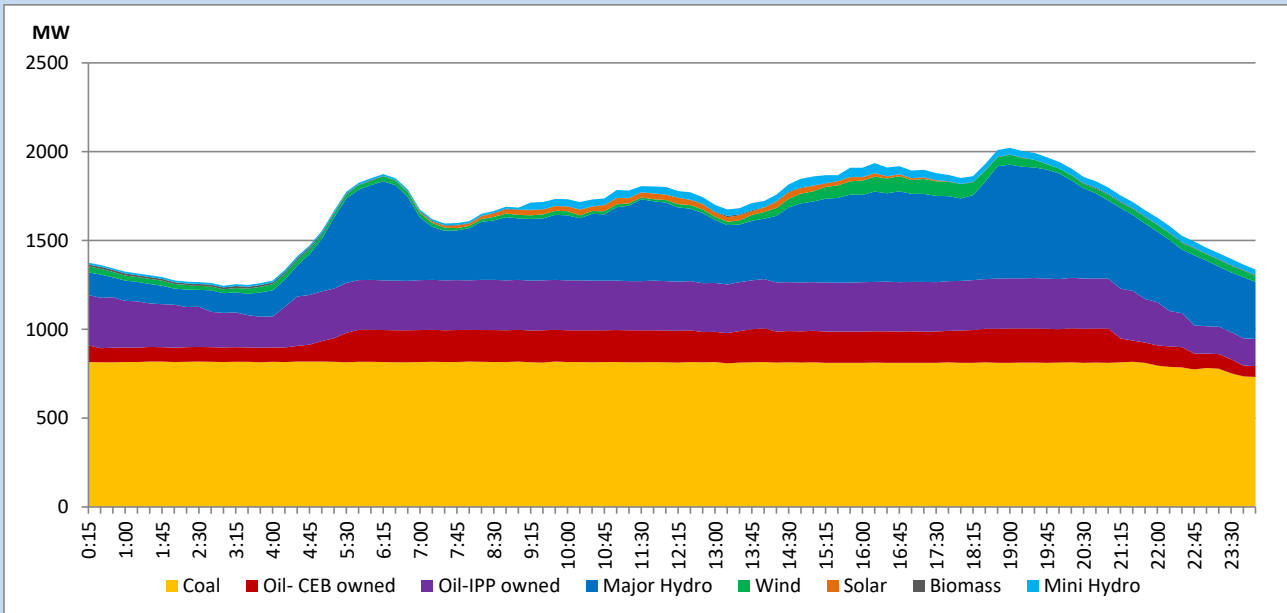


The above figures are excluding contribution from roof top solar, non telemetered solar and mini hydro plants

Daily Load Curve

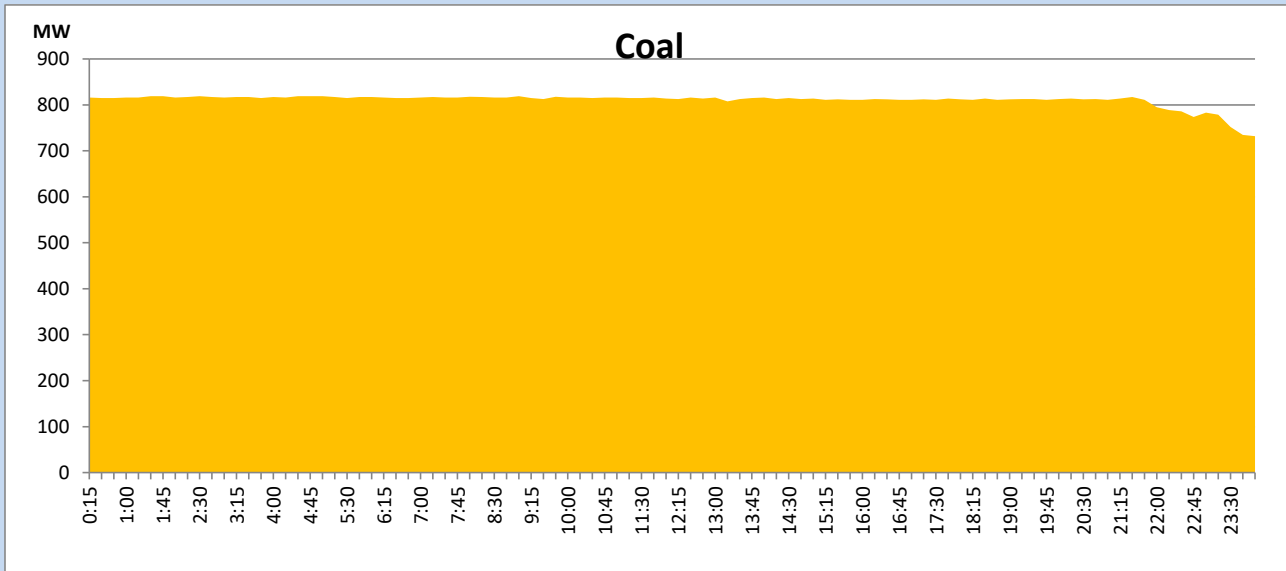
February 24, 2023

Solar and wind data is based on Telemetered Power Stations only



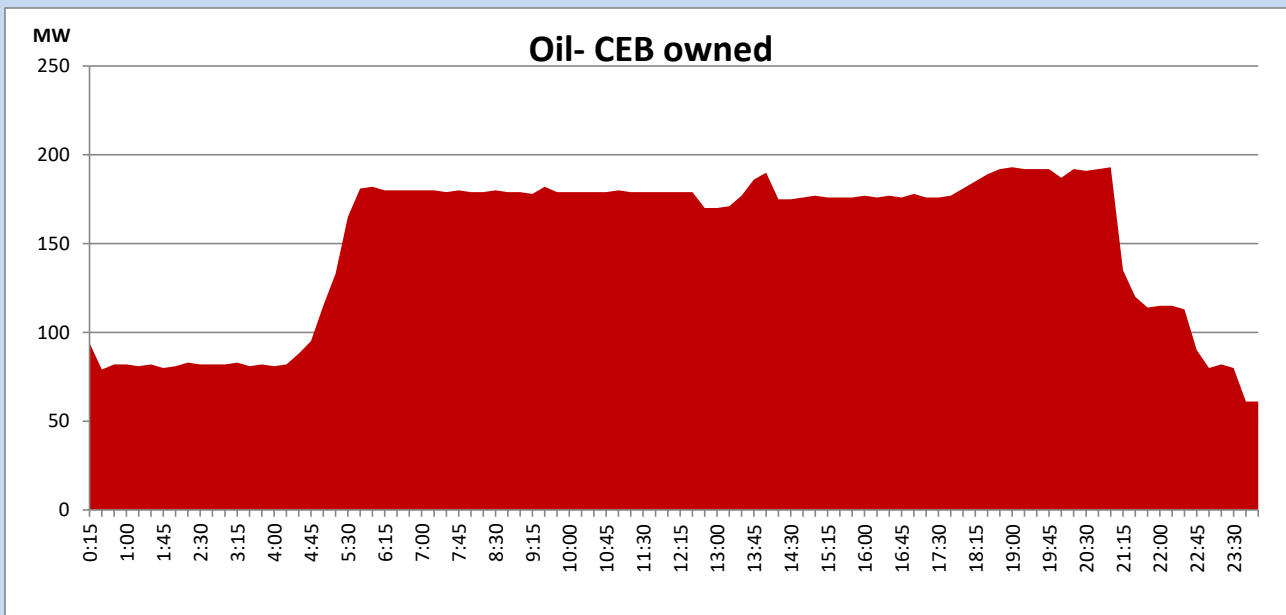
Coal Generation during

February 24, 2023



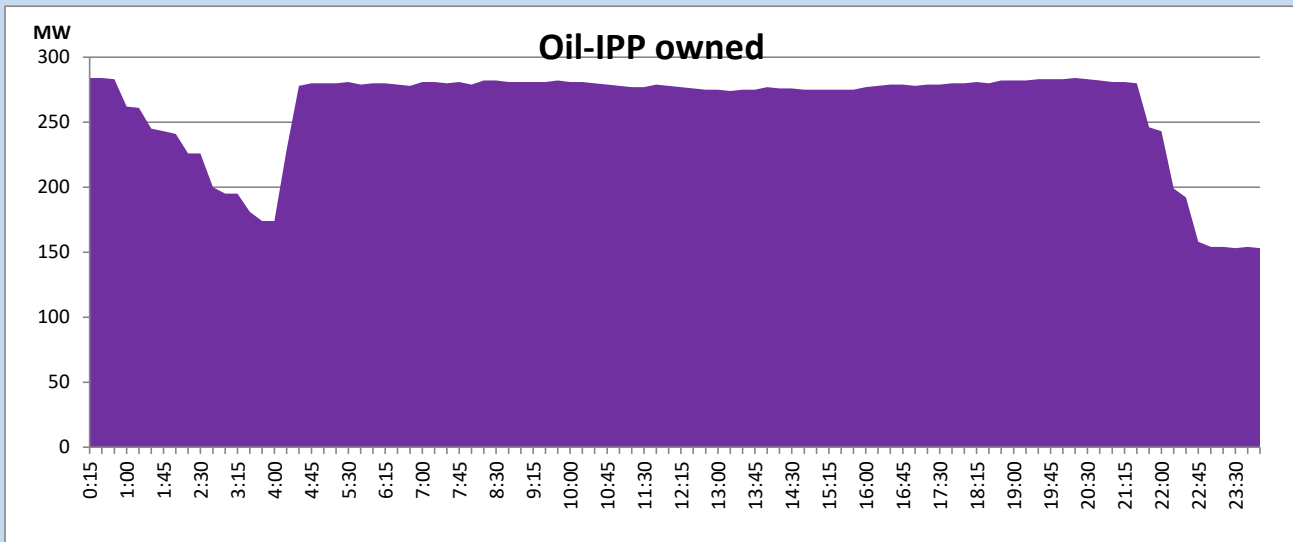
CEB Oil Plant Generation during

February 24, 2023



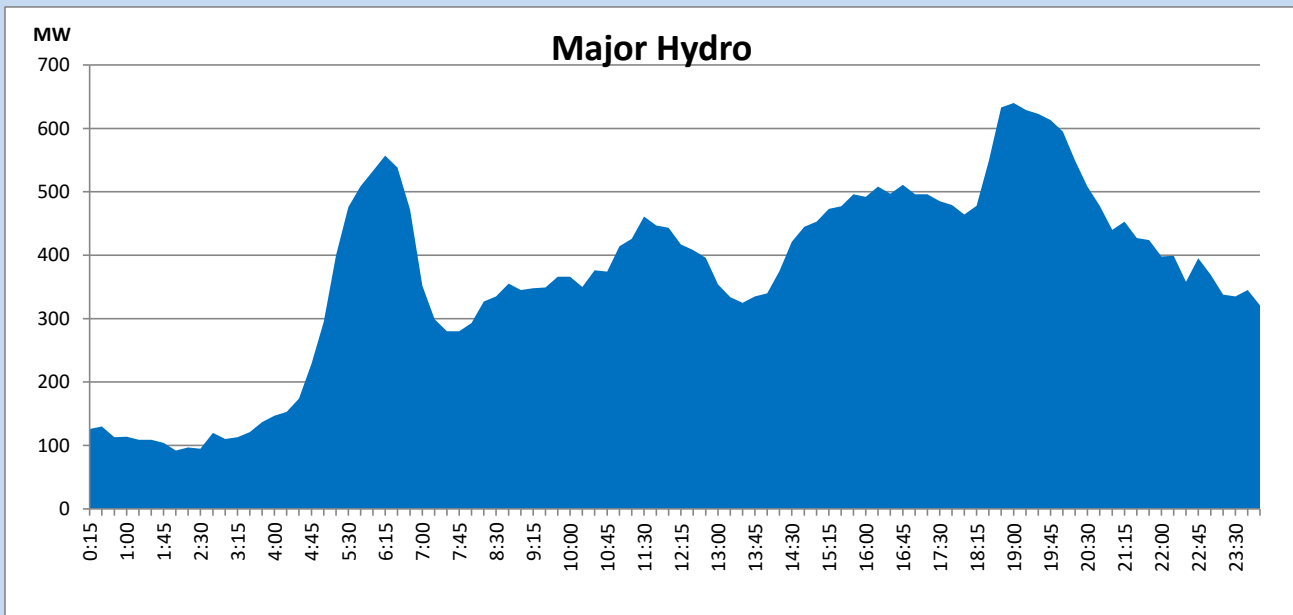
IPP Oil Plant Generation during

February 24, 2023



Major Hydro Generation during

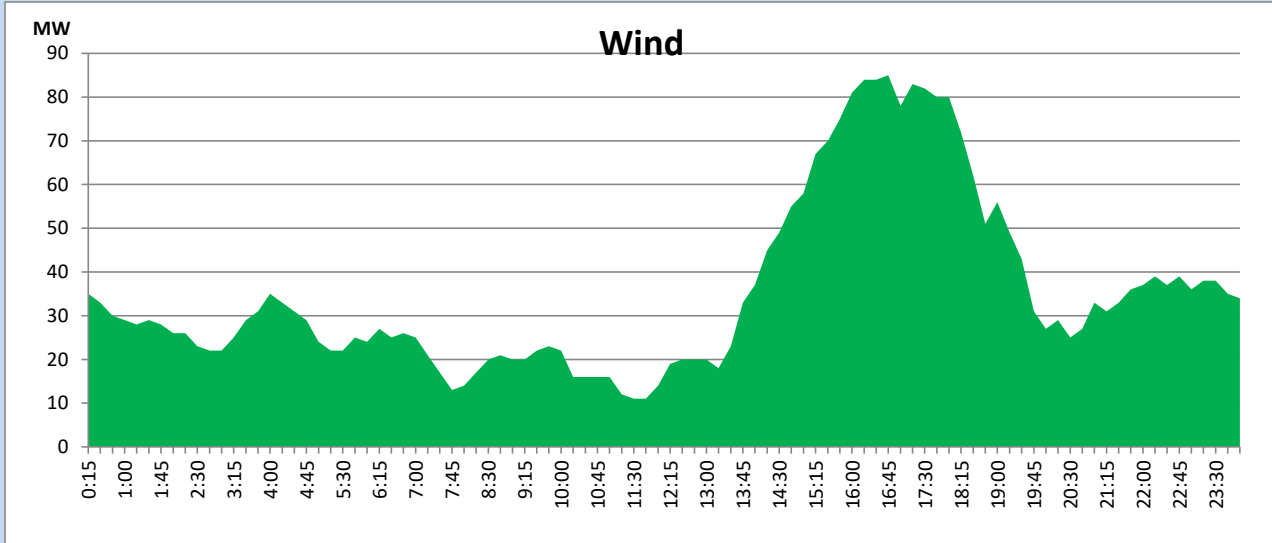
February 24, 2023



Wind Generation during

February 24, 2023

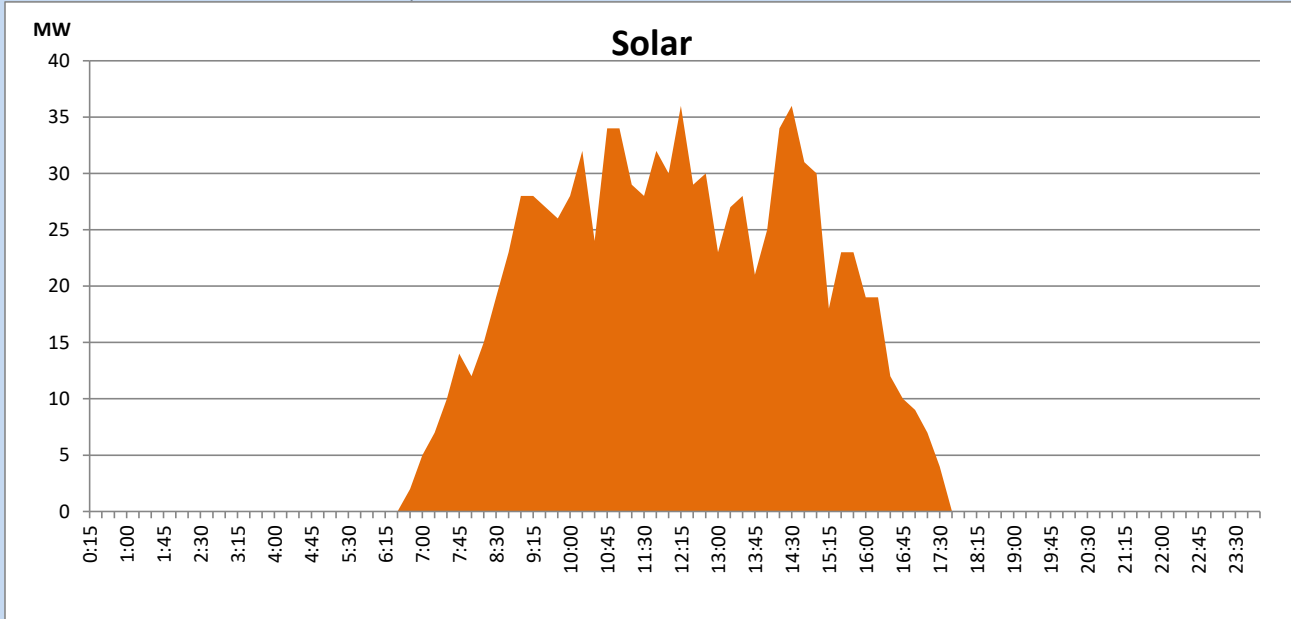
Based on Telemetered Power Stations only



Solar Generation during

February 24, 2023

Based on Telemetered Power Stations only



Thermal Plant Fuel types

Power Station	Primary Fuel
CEB Thermal	
Sapugaskanda 1	Heavy Fuel
Sapugaskanda 2	Heavy Fuel
Kelanitissa Small Gas Turbines	Auto Diesel
GT 7 - Kelanitissa	Auto Diesel
Kelanitissa CCY	Naphtha or Diesel
Lakvijaya 1	Coal
Lakvijaya 2	Coal
Lakvijaya 3	Coal
Uthuru Janani	Heavy Fuel
Barge CEB	Heavy Fuel

Power Station	Primary Fuel
Private Thermal	
West Coast	Auto Diesel / Heavy Fuel

Major Incidents reported during the day

February 24, 2023

- 1) New Habarana – Habarana 132kV cct tripped only from New Habarana end at 11:40hrs with an indication of directional earth fault. The cct was normalized at 11:57hrs.
- 2) Kappalturai 132/33kV T/F 01 which tripped on 23/02/2023 was normalized at 16:50hrs.