

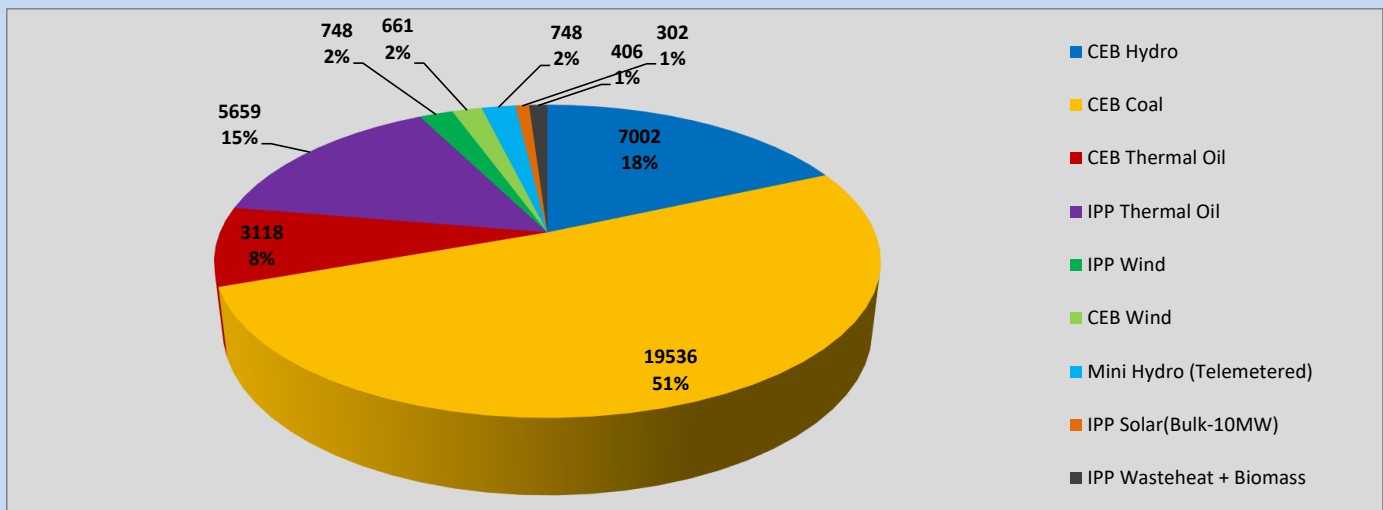
Generation and Reservoirs Statistics

February 18, 2023



PUBLIC UTILITIES COMMISSION OF SRI LANKA

Daily Generation Mix in MWh



Total Generation (Excluding estimated figures) =

38,180 MWh

Estimated figures of CEB generation report

Estimated unserved energy = 0.00 GWh
 Estimated Mini Hydro (Non telemetered) = 1132 MWh
 Estimated IPP Solar PV (Bulk 1-10MW) = 304MWh
 Estimated Solar Roof Top PV = 1450 MWh

Cumulative Dispatch

Following data excludes the contribution from roof top solar, non telemetered solar and mini hydro plants

For Current Month

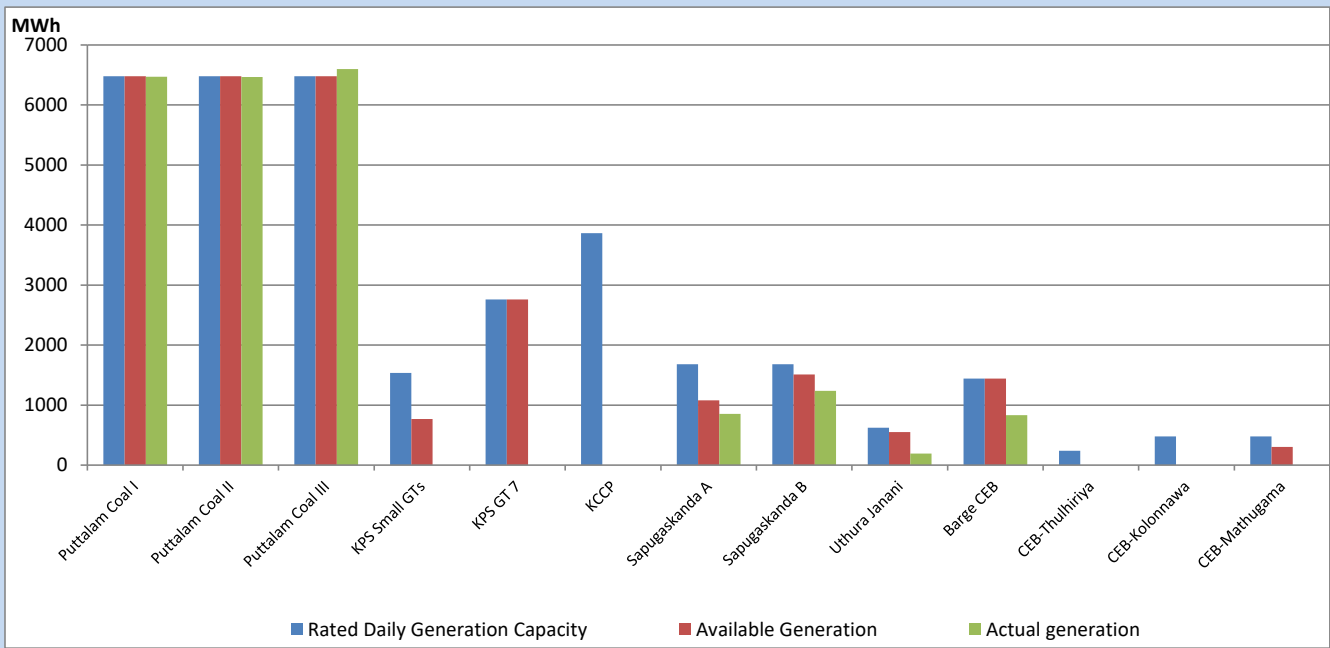
Category	Dispatch (GWh)	Percentage
CEB Hydro	185	27.35%
CEB Coal	344	50.78%
CEB Thermal Oil	70	10.29%
IPP Thermal	32	4.77%
SPP Wind	10	1.52%
CEB Wind	12	1.83%
Mini Hydro (Telemetered)	12	1.82%
IPP Solar(Bulk-10MW)	5	0.78%
IPP Wasteheat + BMP	6	0.86%
Total	677	

For Current Year

Category	Dispatch (GWh)	Percentage
CEB Hydro	515	28.75%
CEB Coal	811	45.25%
CEB Thermal Oil	242	13.53%
IPP Thermal	88	4.92%
SPP Wind	31	1.75%
CEB Wind	38	2.10%
Mini Hydro (Telemetered)	39	2.20%
IPP Solar(Bulk-10MW)	14	0.76%
IPP Wasteheat	13	0.75%
Total	1,792	

CEB owned Thermal Plant Dispatch

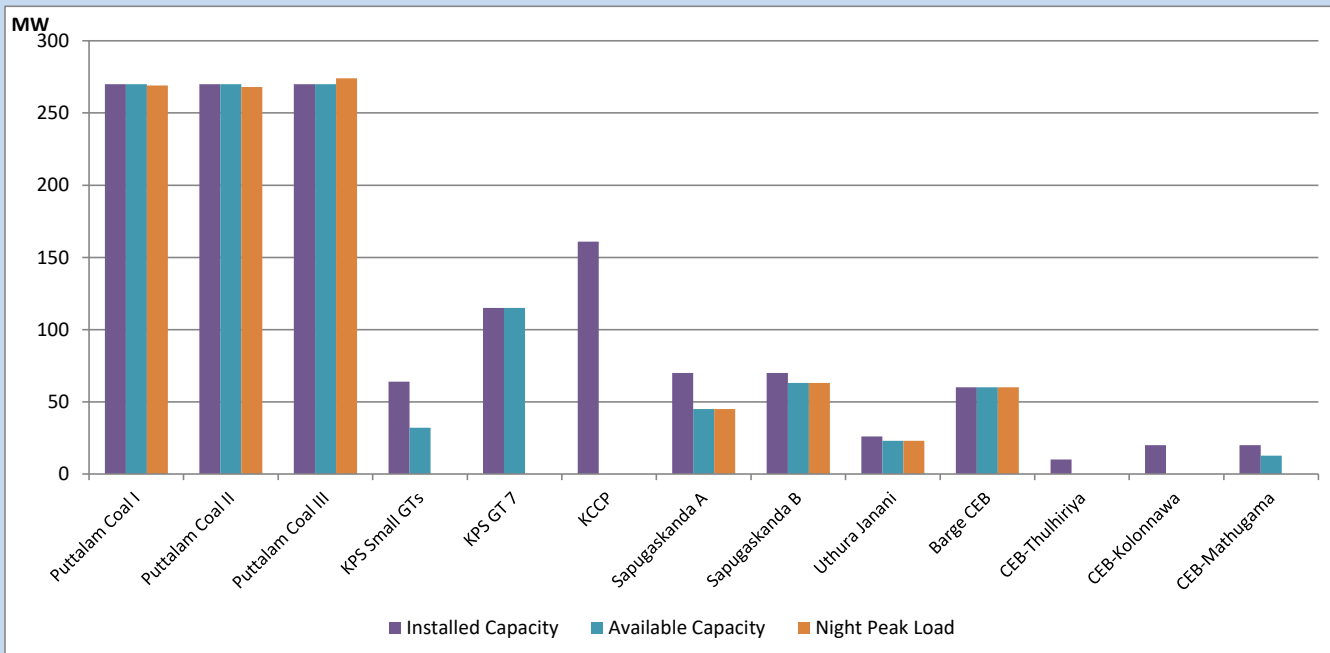
February 18, 2023



Available Generation is estimated based on plant availability at 6.00am on

February 19, 2023

CEB owned Thermal Plant Loading at the Night Peak

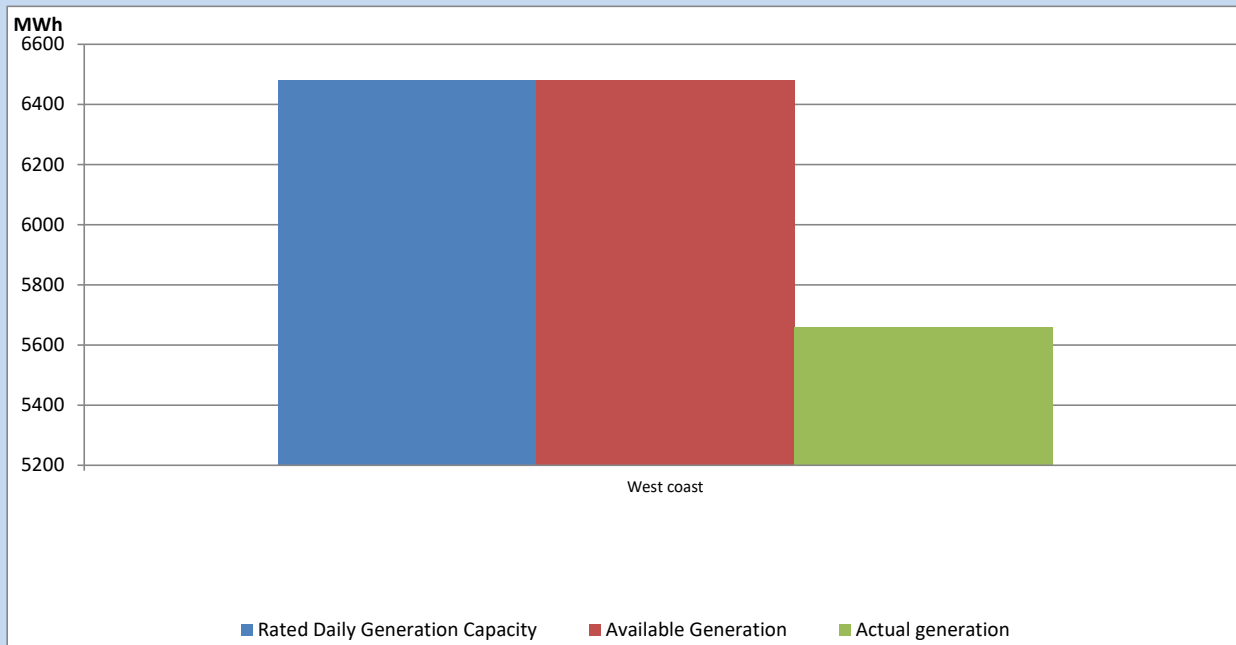


Note- Plant availability is recorded at 6.00 am on

February 19, 2023

IPP owned Thermal Plant Dispatch

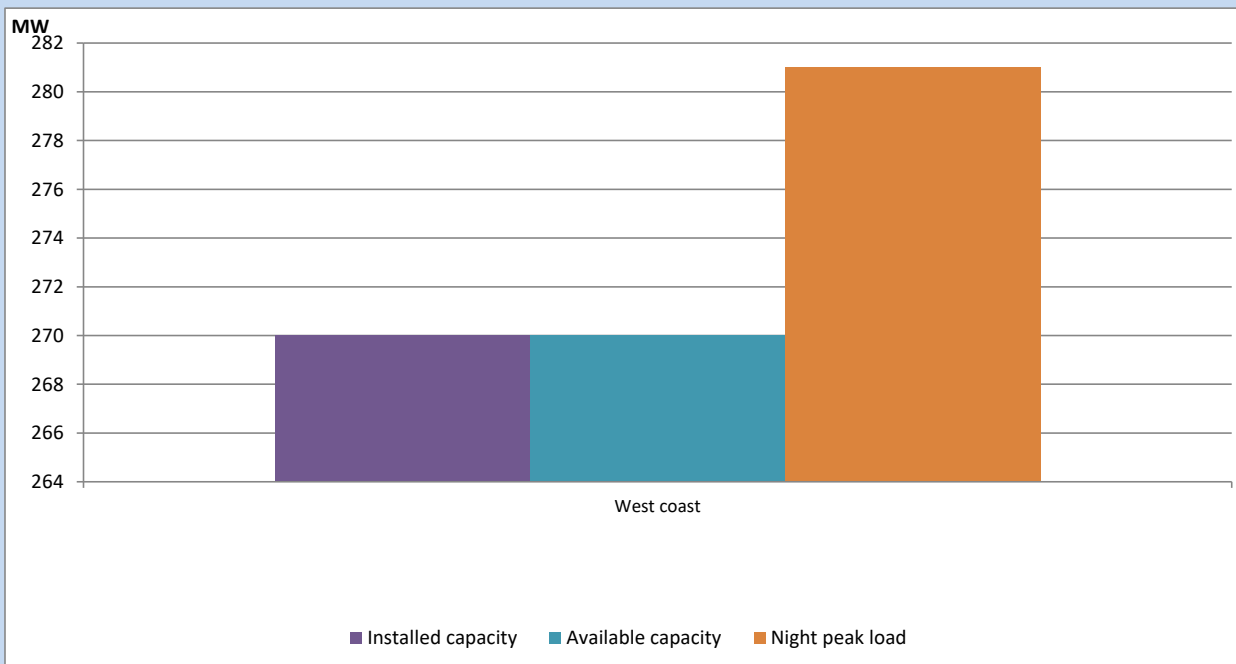
February 18, 2023



Available Generation is estimated based on plant availability at 6.00am on

February 19, 2023

IPP owned Thermal Plant Loading at the Night Peak

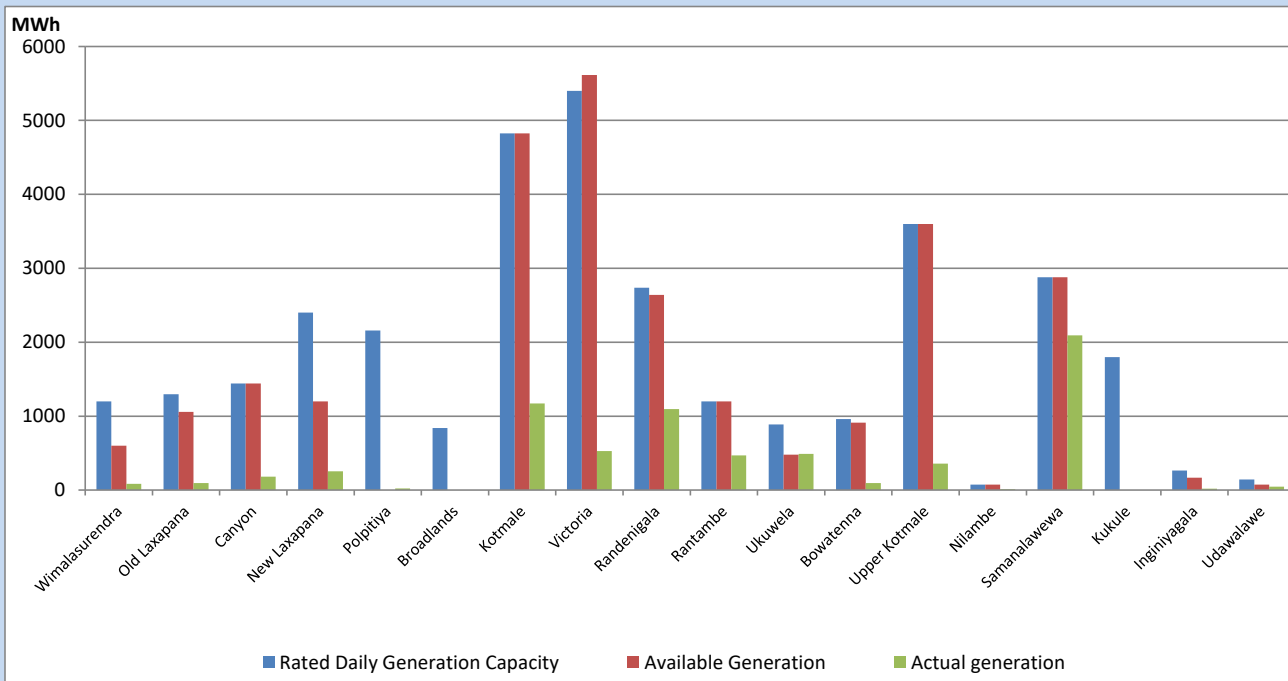


Note- Plant availability is recorded at 6.00 am on

February 19, 2023

Major Hydro Plant Dispatch

February 18, 2023

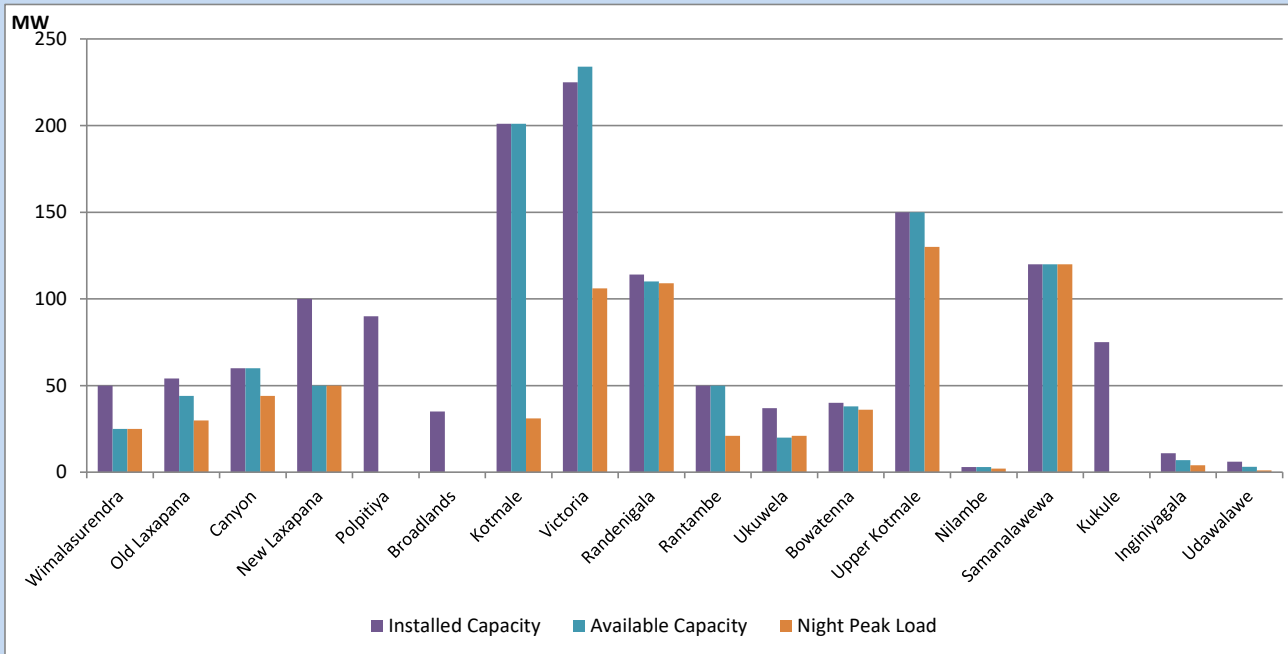


Available Generation is estimated based on plant availability at 6.00am on
Broadlands power plant is operating in the Commissioning Stage

February 19, 2023

Major Hydro Plant Loading at Night Peak

February 18, 2023



Note- Plant availability is recorded at 6.00 am on

February 19, 2023

Broadlands power plant is operating in the Commissioning Stage

Summary of Major Plant performance

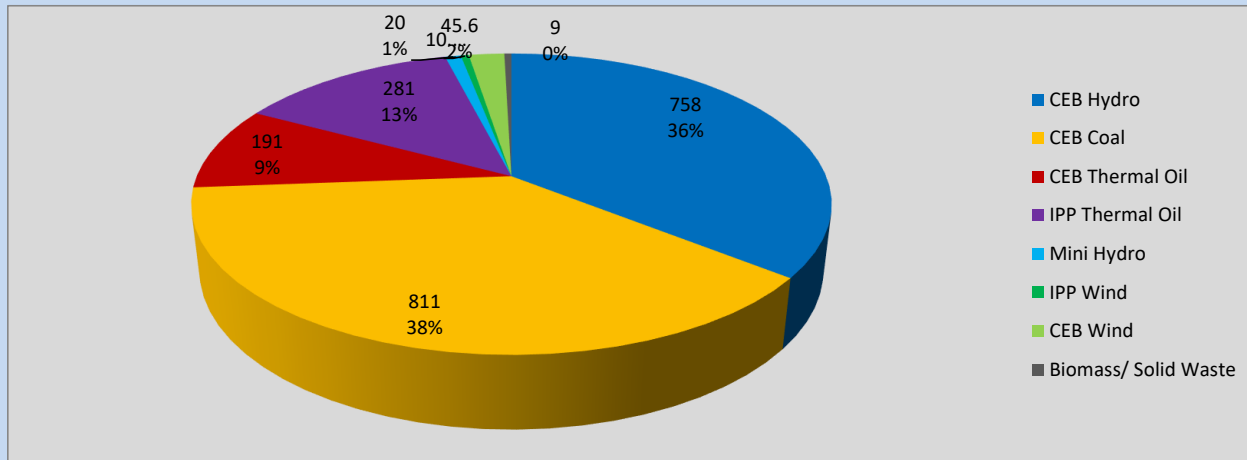
Plant	Installed Capacity	Plant Availability	Night peak Load	Plant Dispatch
	(MW)	(MW)	(MW)	(MWh)
Wimalasurendra	50	25	25	85
Old Laxapana	54	44	30	93
Canyon	60	60	44	181
New Laxapana	100	50	50	255
Polpitiya	90	0	0	22
Broadlands	35	0	0	0
Kotmale	201	201	31	1,170
Victoria	225	234	106	526
Randenigala	114	110	109	1,094
Rantambe	50	50	21	467
Ukuwela	37	20	21	490
Bowatenna	40	38	36	95
Upper Kotmale	150	150	130	357
Nilambe	3	3	2	10
Samanalawewa	120	120	120	2,093
Kukule	75	0	0	0
Inginiyagala	11	7	4	17
Udawalawe	6	3	1	47
Puttalam Coal I	270	270	269	6,471
Puttalam Coal II	270	270	268	6,467
Puttalam Coal III	270	270	274	6,598
KPS Small GTs	64	32	0	0
KPS GT 7	115	115	0	0
KCCP	161	0	0	0
Sapugaskanda A	70	45	45	854
Sapugaskanda B	70	63	63	1,239
Uthura Janani	26	23	23	192
Barge CEB	60	60	60	833
CEB-Thulhiriya	10	0	0	0
CEB-Kolonnawa	20	0	0	0
CEB-Mathugama	20	13	0	0
ACE Matara	24	0	0	0
Asia Power	50	0	0	0
Sojitz Kelanitissa	163	0	0	0
West Coast	270	270	281	5,659
Nothern Power	36	0	0	0
ACE Embilipitiya	93	0	0	0
Total	3,483	2,546	2,098	38,180

Plant availability is the availability recorded at 6 am on

February 19, 2023

Contribution to the Night Peak in MW

February 18, 2023

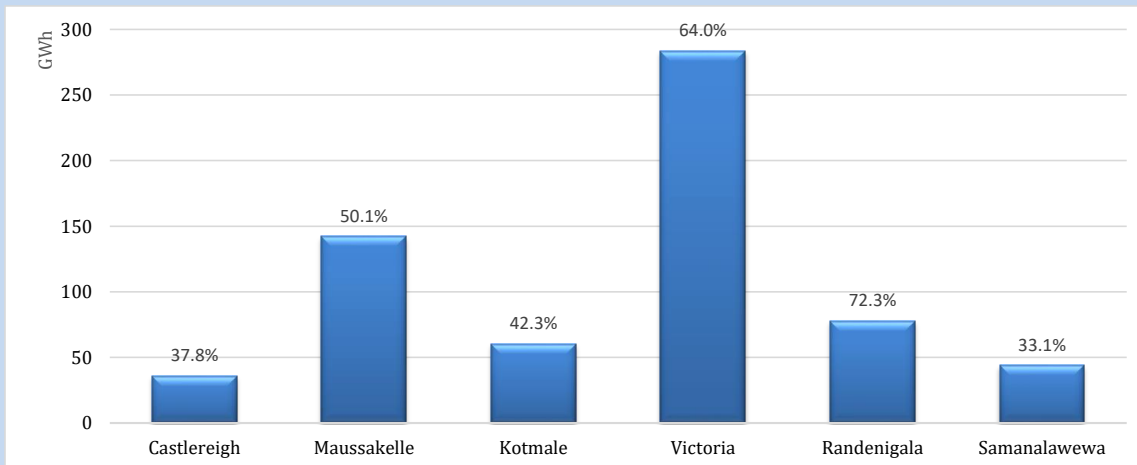


Night Peak*	2,126 MW
Day Peak	1,665 MW
Minimum Demand	1,254 MW

Above figures are excluding contribution from roof top solar, non telemetered solar and mini hydro plants

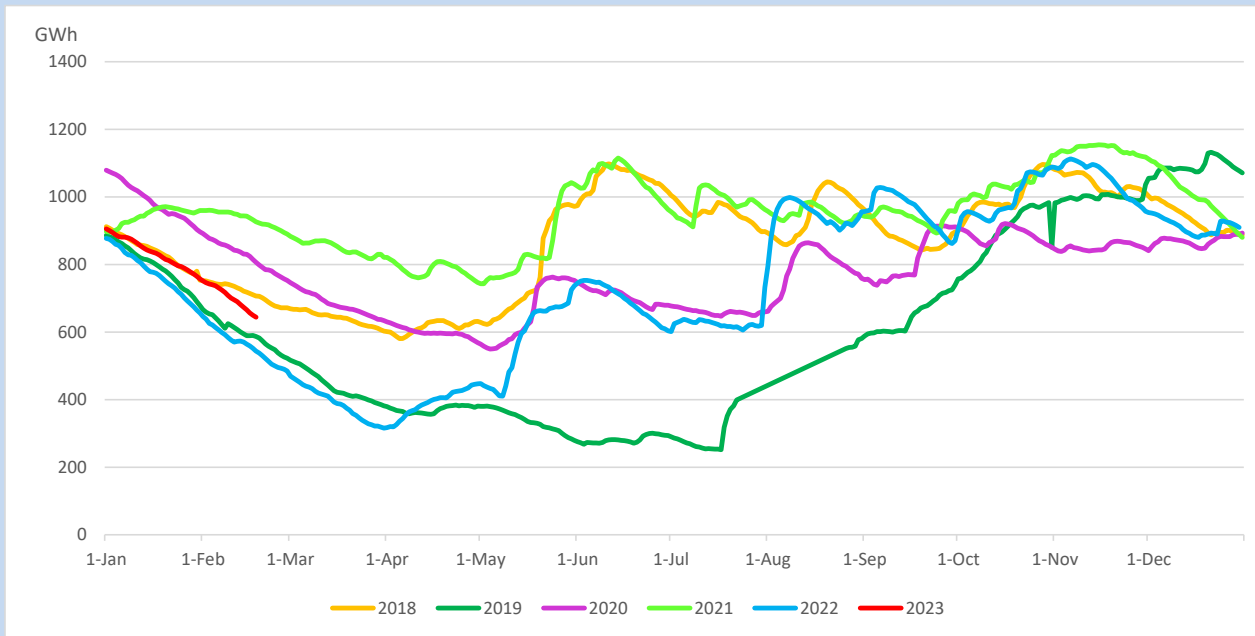
Reservoir Levels -

as at 06.00 Hr on February 19, 2023

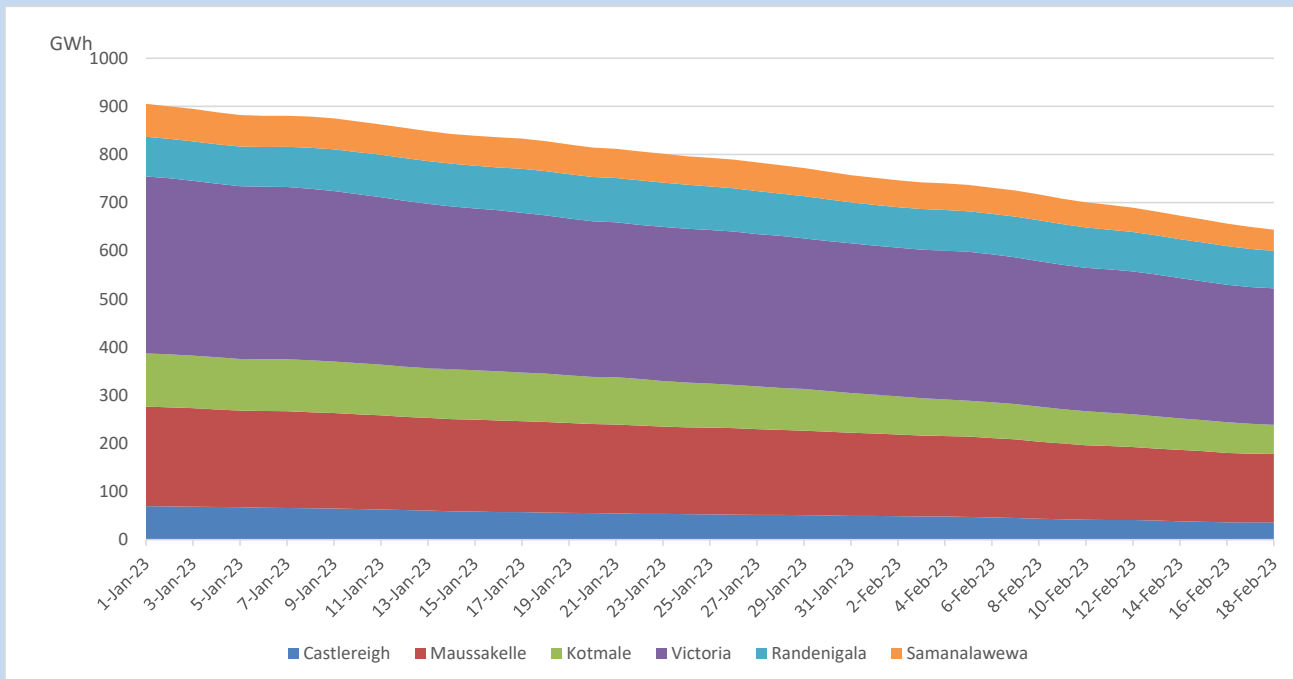


Total Reservoir Level	643.9 GWh
% of Total capacity	53.4%

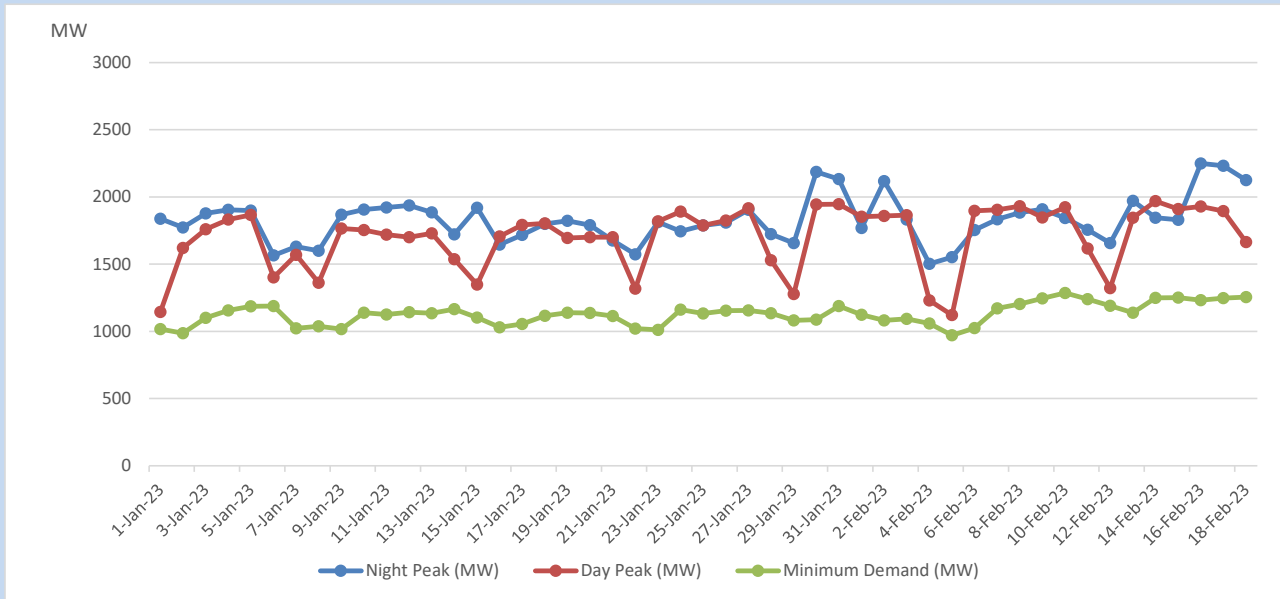
Comparison of Total Reservoir Storage Levels with Past Years



Variation of Major Hydro Reservoir Levels in the current year (GWh)



Variation of Demand during the current year

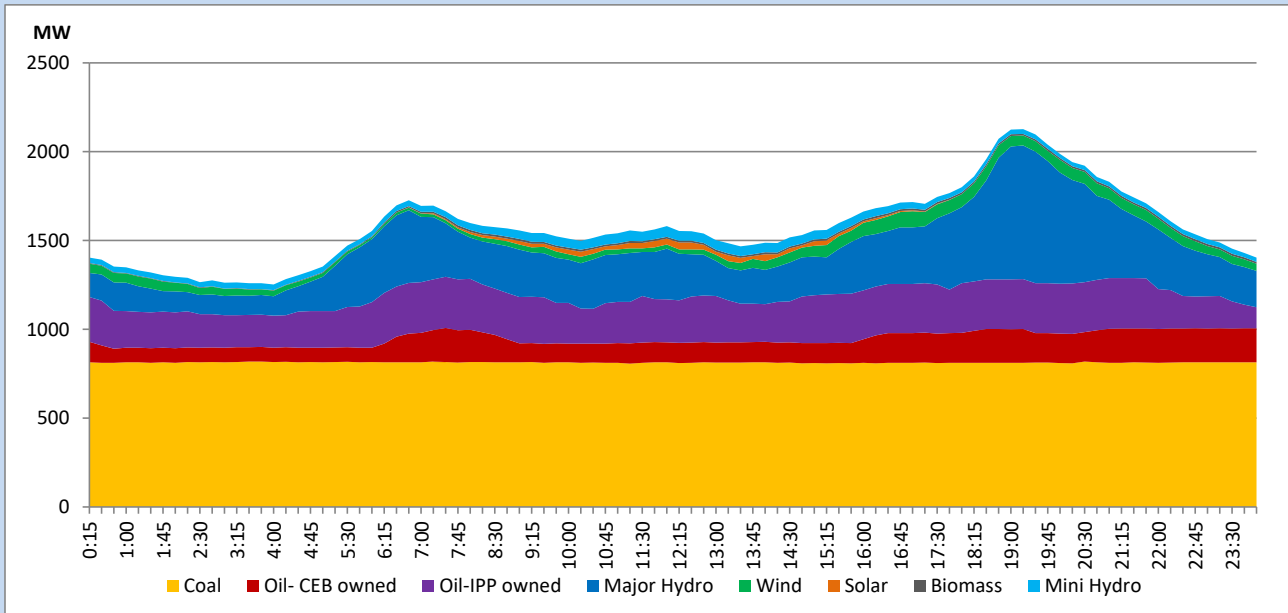


The above figures are excluding contribution from roof top solar, non telemetered solar and mini hydro plants

Daily Load Curve

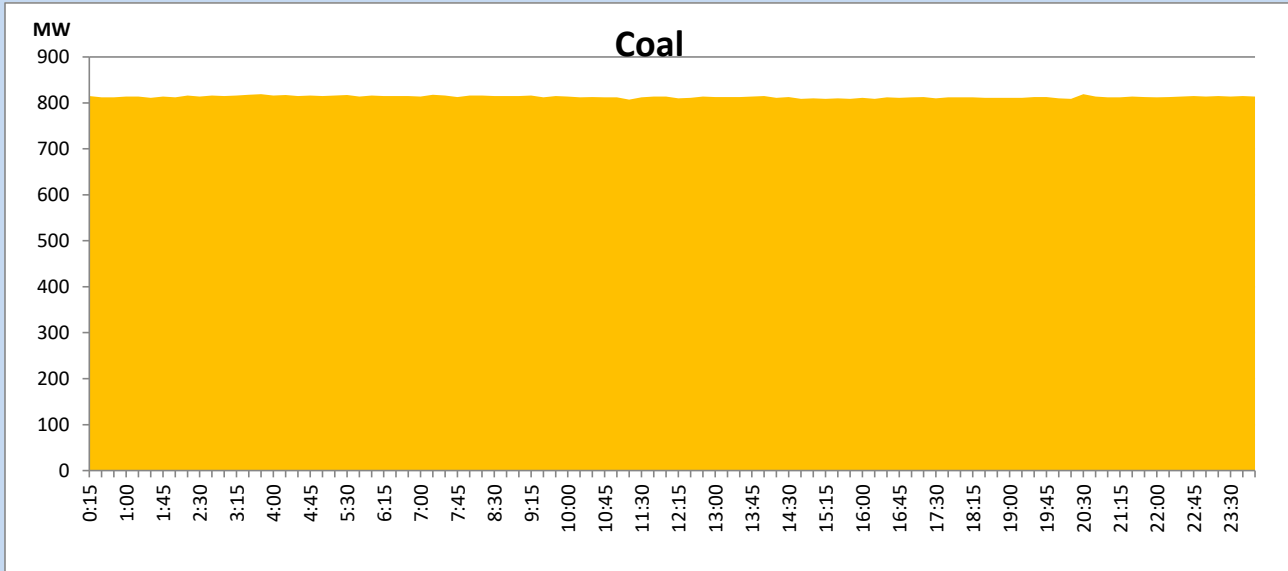
February 18, 2023

Solar and wind data is based on Telemetered Power Stations only



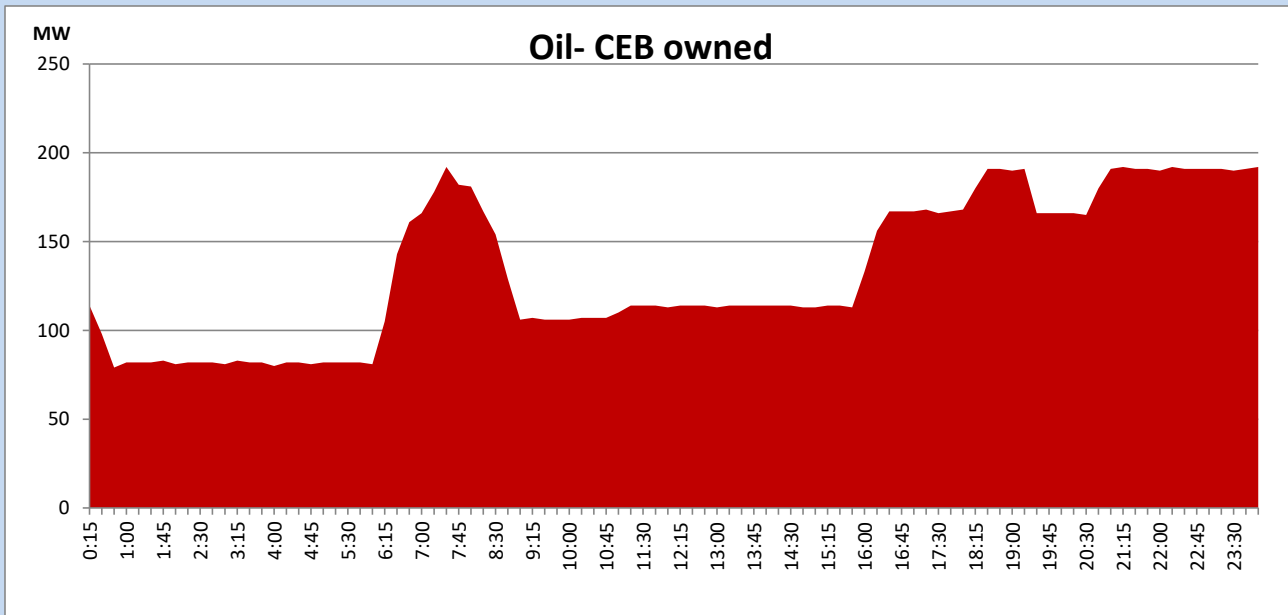
Coal Generation during

February 18, 2023



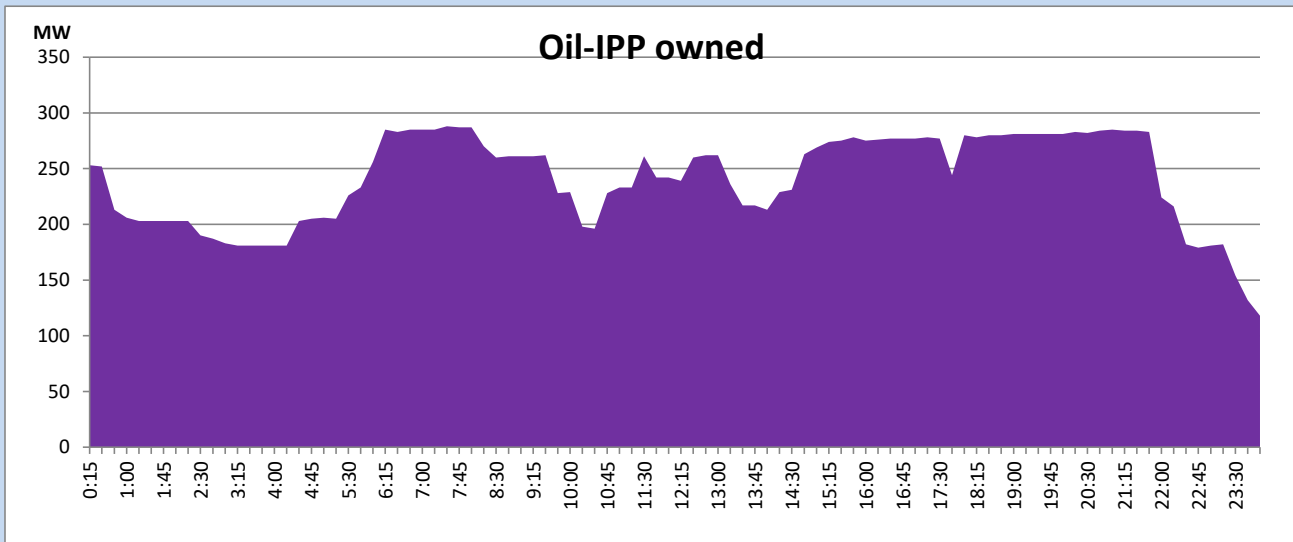
CEB Oil Plant Generation during

February 18, 2023



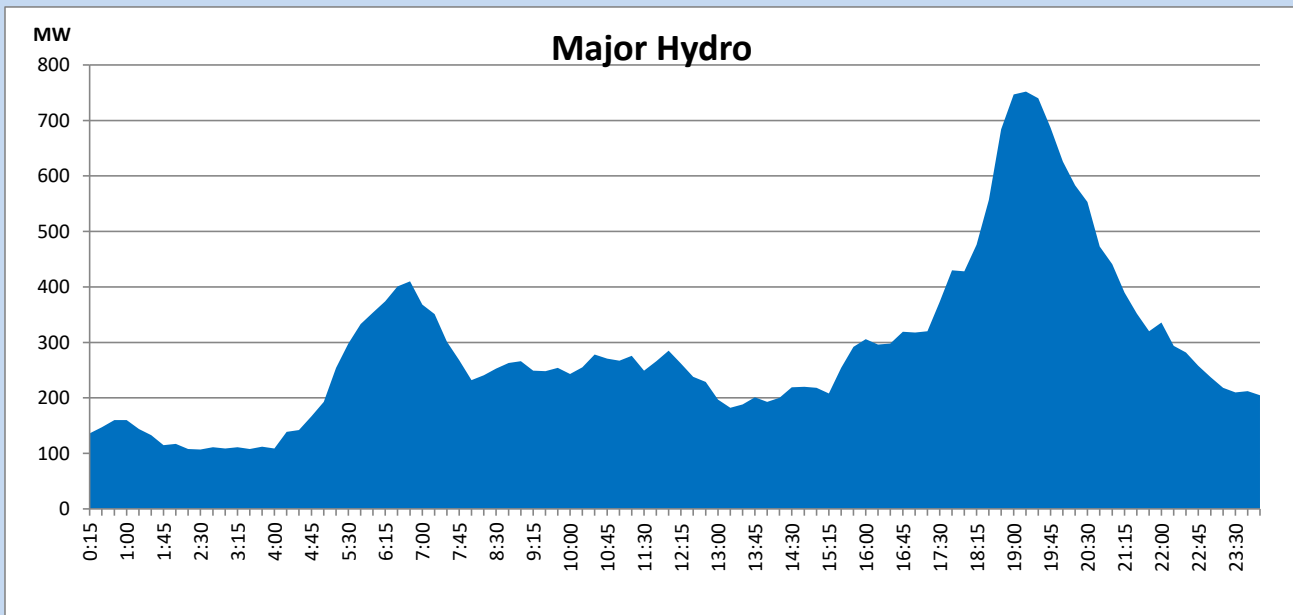
IPP Oil Plant Generation during

February 18, 2023



Major Hydro Generation during

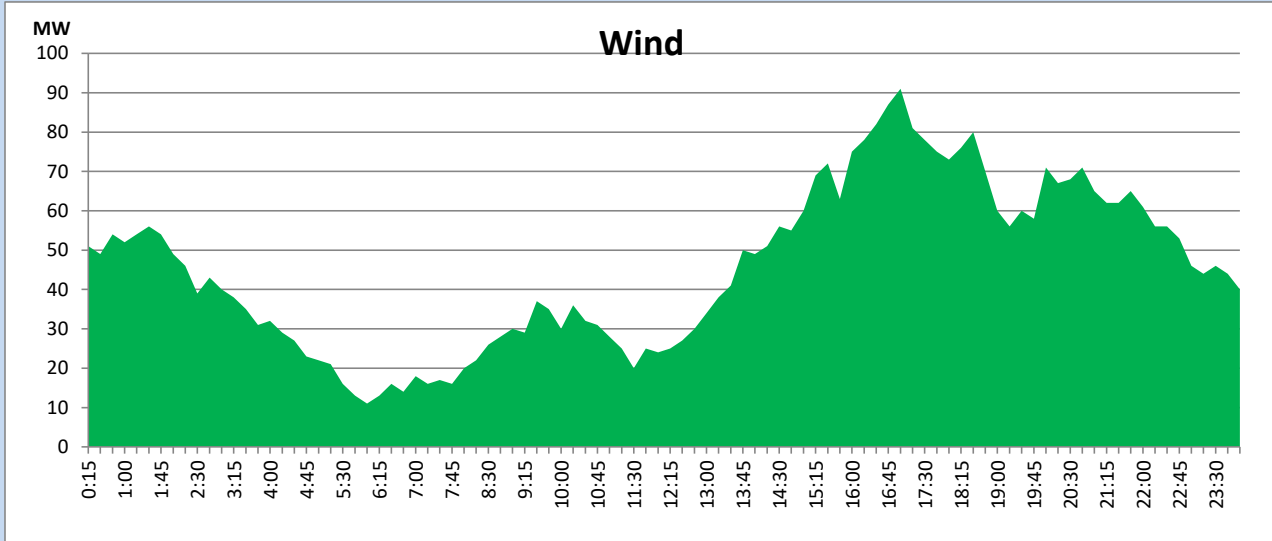
February 18, 2023



Wind Generation during

February 18, 2023

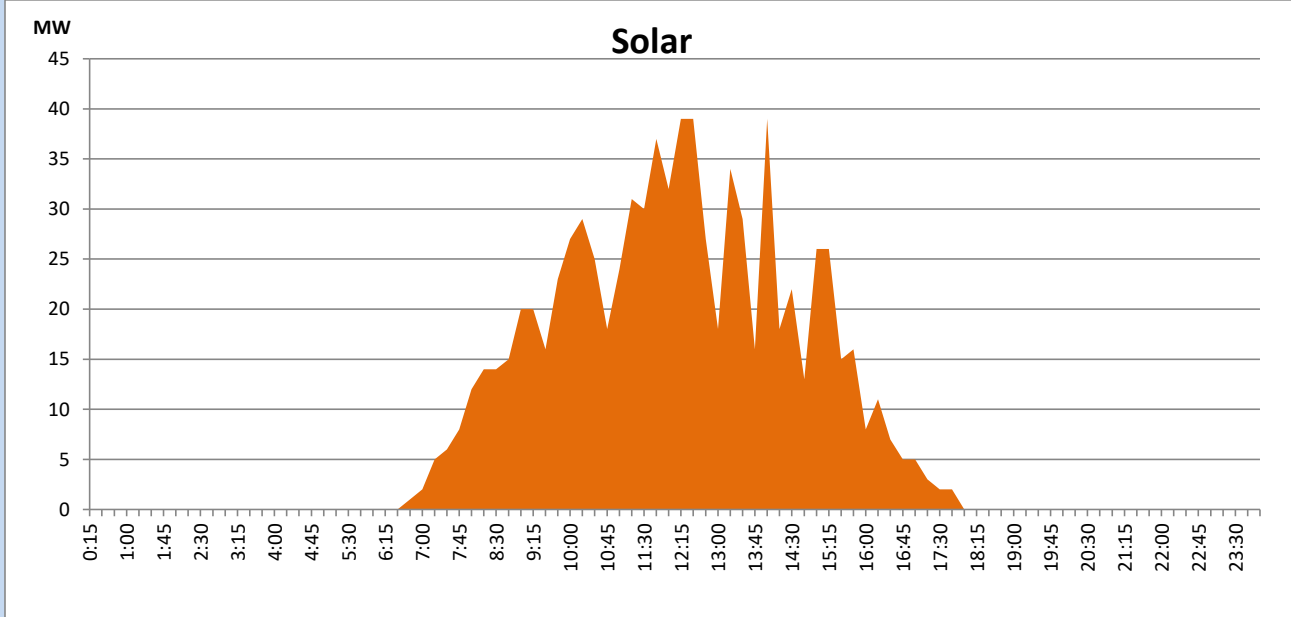
Based on Telemetered Power Stations only



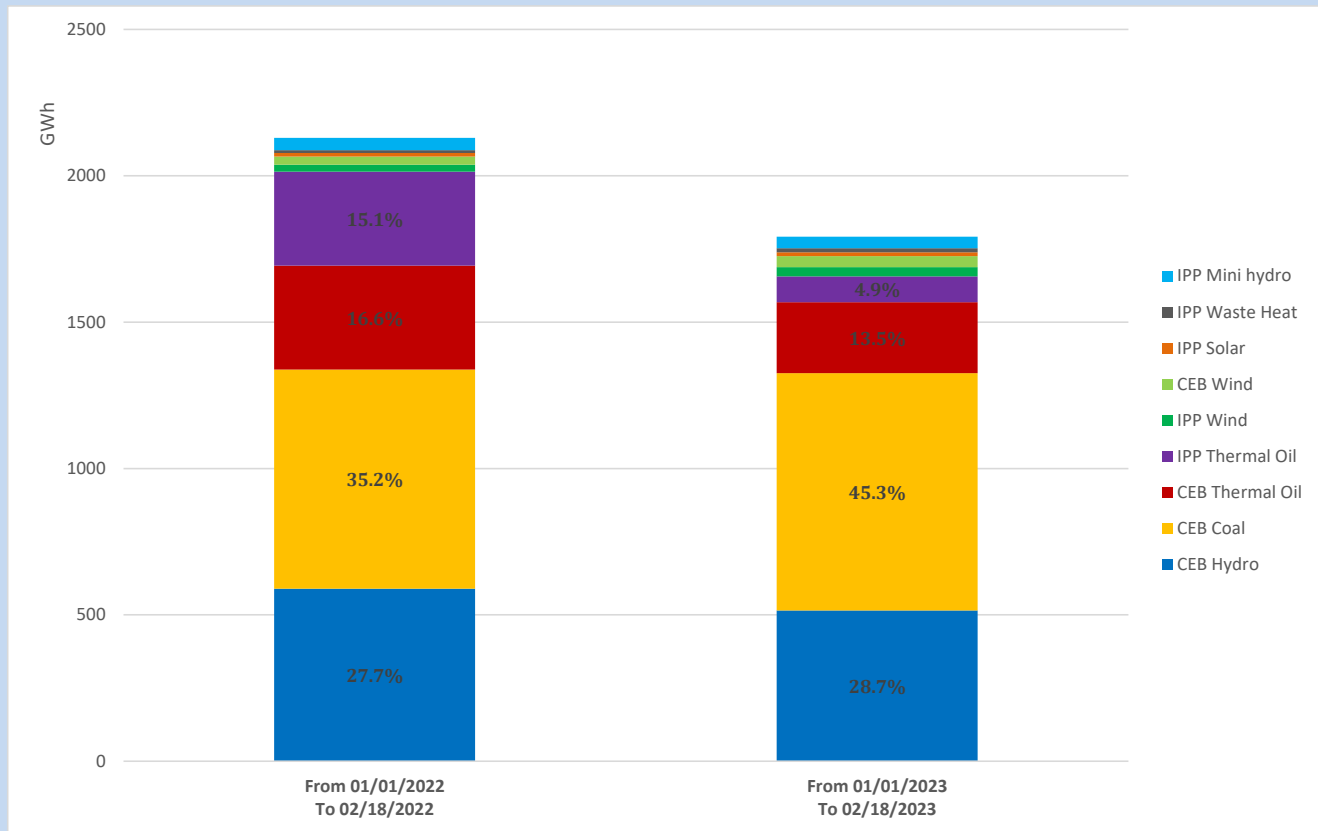
Solar Generation during

February 18, 2023

Based on Telemetered Power Stations only



Cumulative Dispatch Comparison with Last Year



Thermal Plant Fuel types

Power Station	Primary Fuel
CEB Thermal	
Sapugaskanda 1	Heavy Fuel
Sapugaskanda 2	Heavy Fuel
Kelanitissa Small Gas Turbines	Auto Diesel
GT 7 - Kelanitissa	Auto Diesel
Kelanitissa CCY	Naphtha or Diesel
Lakvijaya 1	Coal
Lakvijaya 2	Coal
Lakvijaya 3	Coal
Uthuru Janani	Heavy Fuel
Barge CEB	Heavy Fuel

Power Station	Primary Fuel
Private Thermal	
West Coast	Auto Diesel / Heavy Fuel

Major Incidents reported during the day

February 18, 2023

1.) Correction was made by revising the present water level at Victoria reservoir. System daily inflow value corresponding to 19-Feb was revised accordingly.