

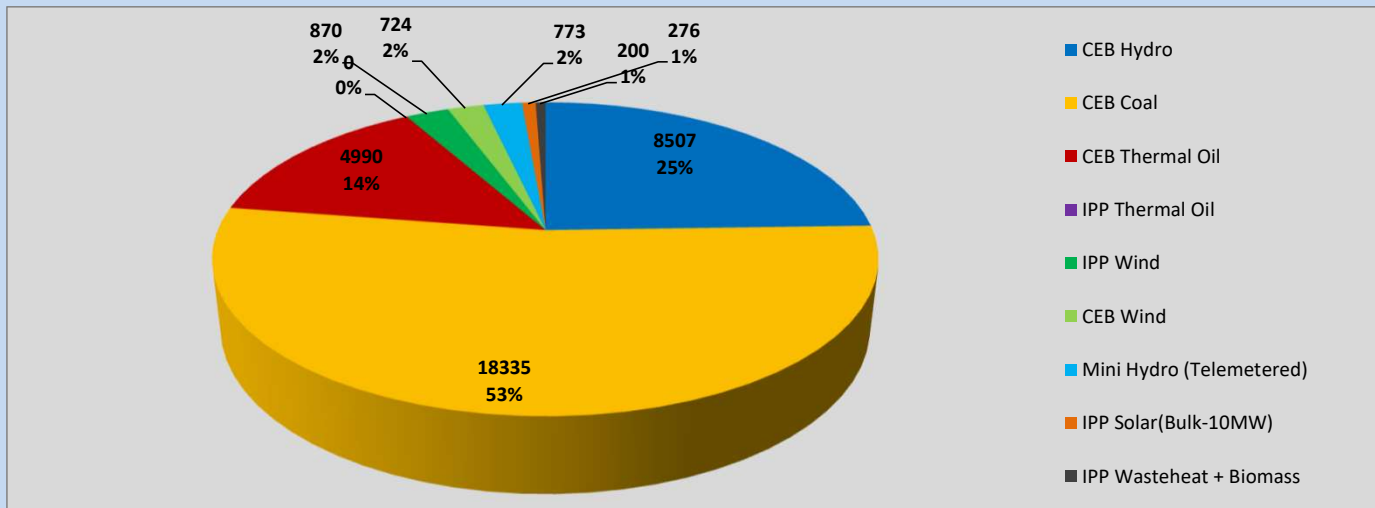
# Generation and Reservoirs Statistics

January 28, 2023



PUBLIC UTILITIES COMMISSION OF SRI LANKA

## Daily Generation Mix in MWh



Total Generation (Excluding estimated figures) =

34,675 MWh

### Estimated figures of CEB generation report

Estimated unserved energy = 1.76 GWh

Estimated Mini Hydro (Non telemetered) = 1747 MWh

Estimated IPP Solar PV (Bulk 1-10MW) = 304MWh

Estimated Solar Roof Top PV = 1480 MWh

## Cumulative Dispatch

Following data excludes the contribution from roof top solar, non telemetered solar and mini hydro plants

### For Current Month

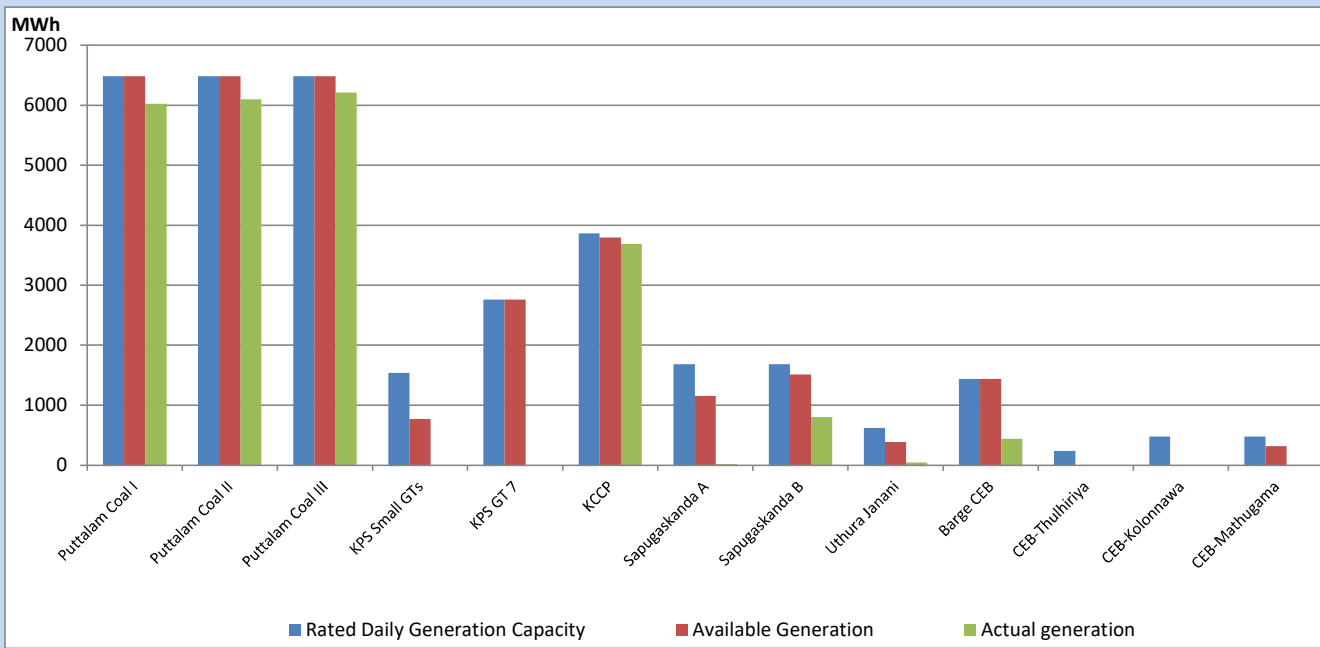
Category	Dispatch (GWh)	Percentage
CEB Hydro	295	29.41%
CEB Coal	409	40.84%
CEB Thermal Oil	160	16.01%
IPP Thermal	56	5.57%
SPP Wind	19	1.91%
CEB Wind	23	2.28%
Mini Hydro (Telemetered)	25	2.50%
IPP Solar(Bulk-10MW)	8	0.76%
IPP Wasteheat + BMP	7	0.72%
<b>Total</b>	<b>1,002</b>	

### For Current Year

Category	Dispatch (GWh)	Percentage
CEB Hydro	295	29.41%
CEB Coal	409	40.84%
CEB Thermal Oil	160	16.01%
IPP Thermal	56	5.57%
SPP Wind	19	1.91%
CEB Wind	23	2.28%
Mini Hydro (Telemetered)	25	2.50%
IPP Solar(Bulk-10MW)	8	0.76%
IPP Wasteheat	7	0.72%
<b>Total</b>	<b>1,002</b>	

## CEB owned Thermal Plant Dispatch

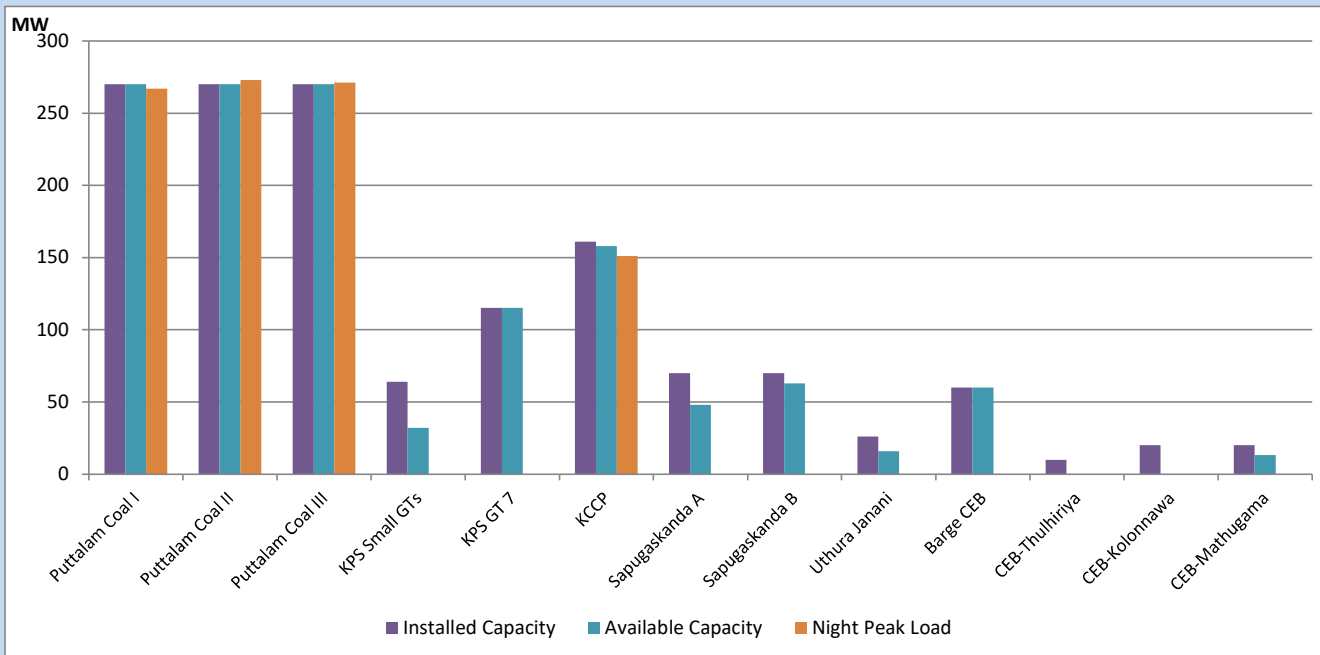
January 28, 2023



Available Generation is estimated based on plant availability at 6.00am on

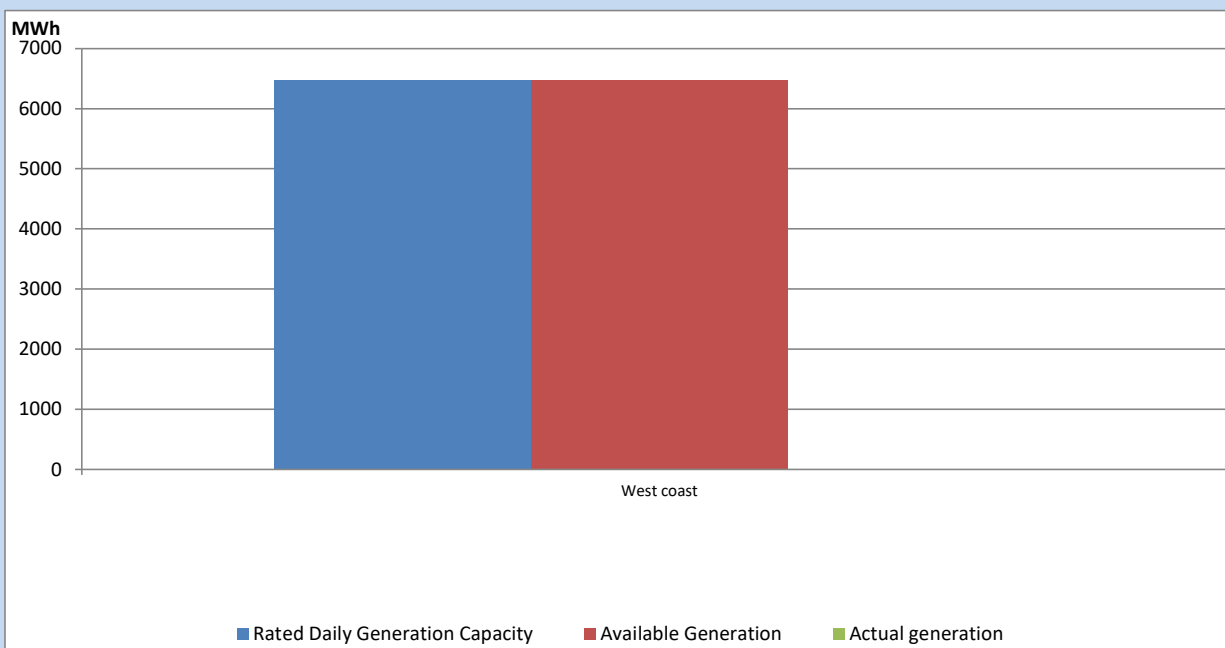
January 29, 2023

## CEB owned Thermal Plant Loading at the Night Peak



Note- Plant availability is recorded at 6.00 am on

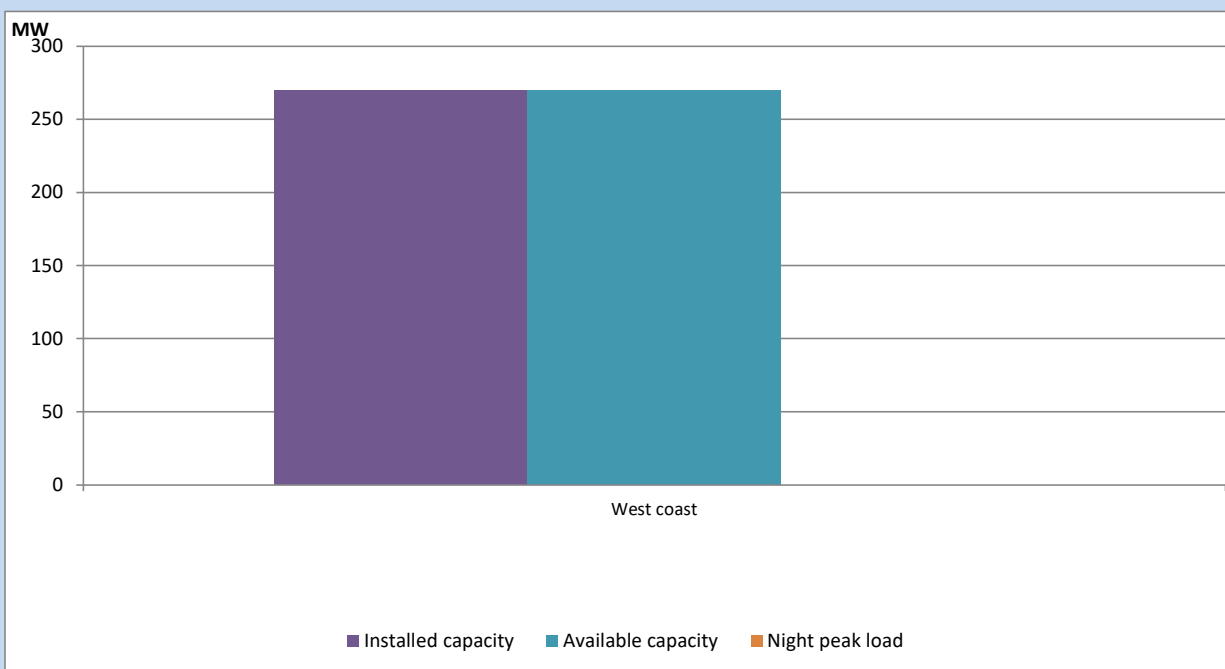
January 29, 2023



Available Generation is estimated based on plant availability at 6.00am on

January 29, 2023

IPP owned Thermal Plant Loading at the Night Peak

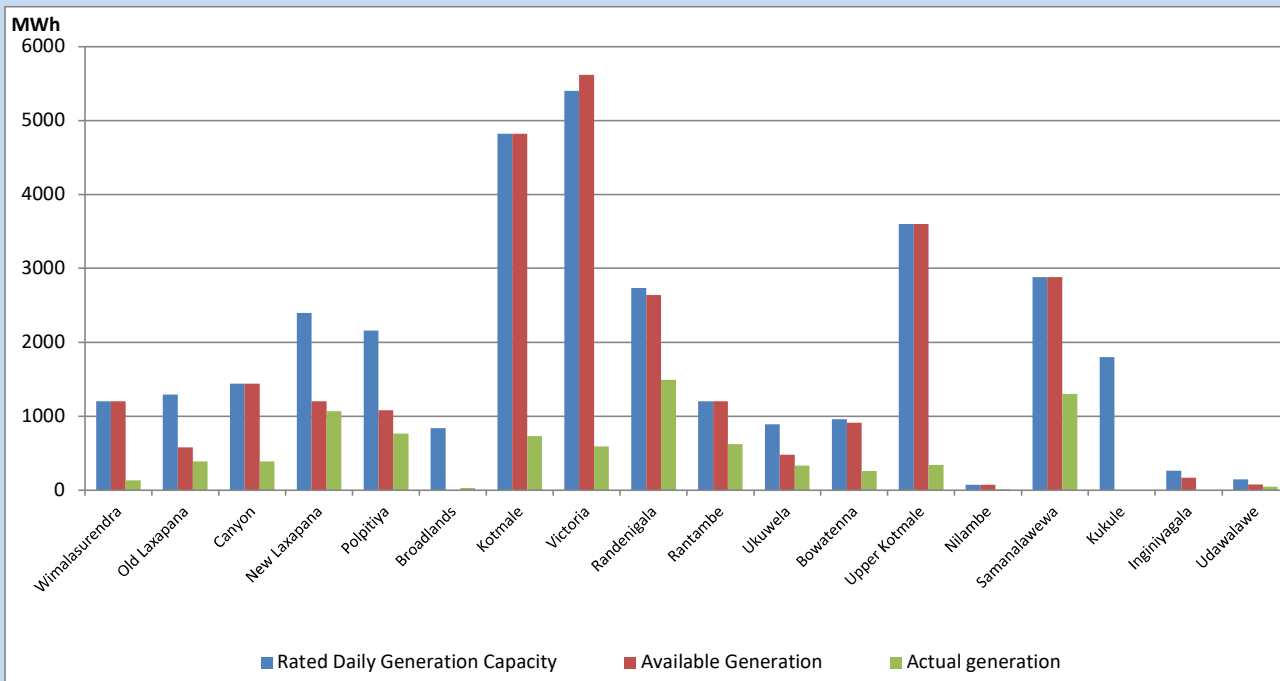


Note- Plant availability is recorded at 6.00 am on

January 29, 2023

## Major Hydro Plant Dispatch

January 28, 2023

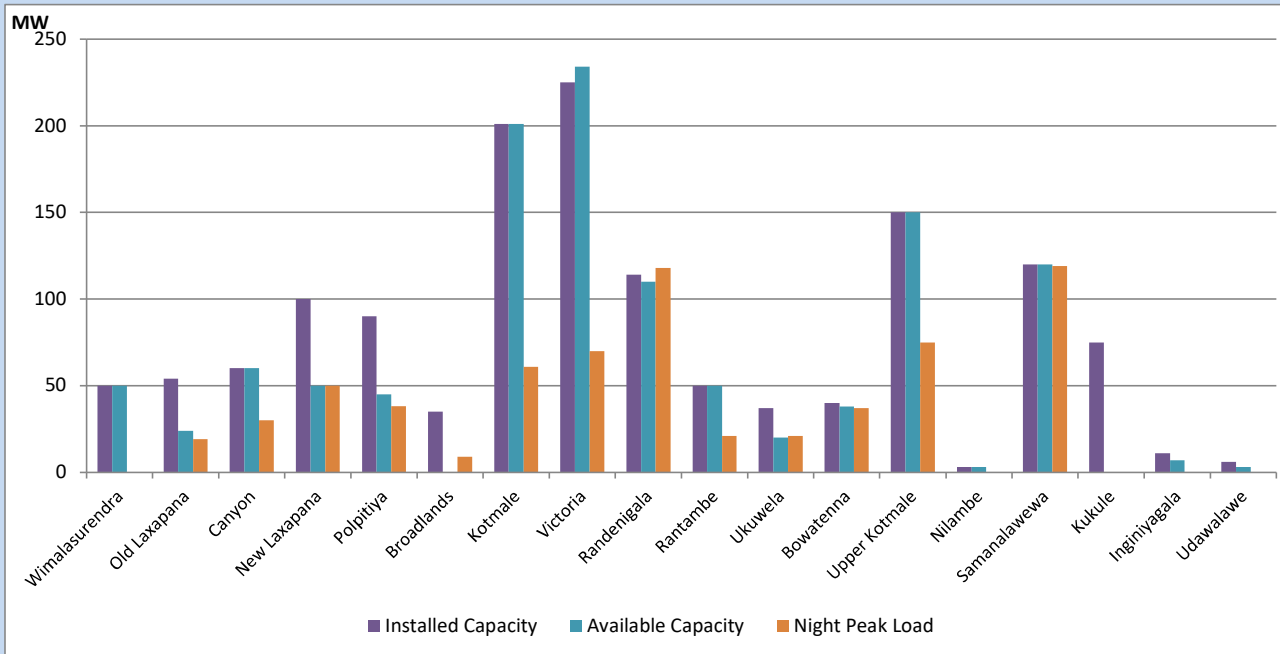


Available Generation is estimated based on plant availability at 6.00am on  
Broadlands power plant is operating in the Commissioning Stage

January 29, 2023

## Major Hydro Plant Loading at Night Peak

January 28, 2023



Note- Plant availability is recorded at 6.00 am on

January 29, 2023

Broadlands power plant is operating in the Commissioning Stage

## Summary of Major Plant performance

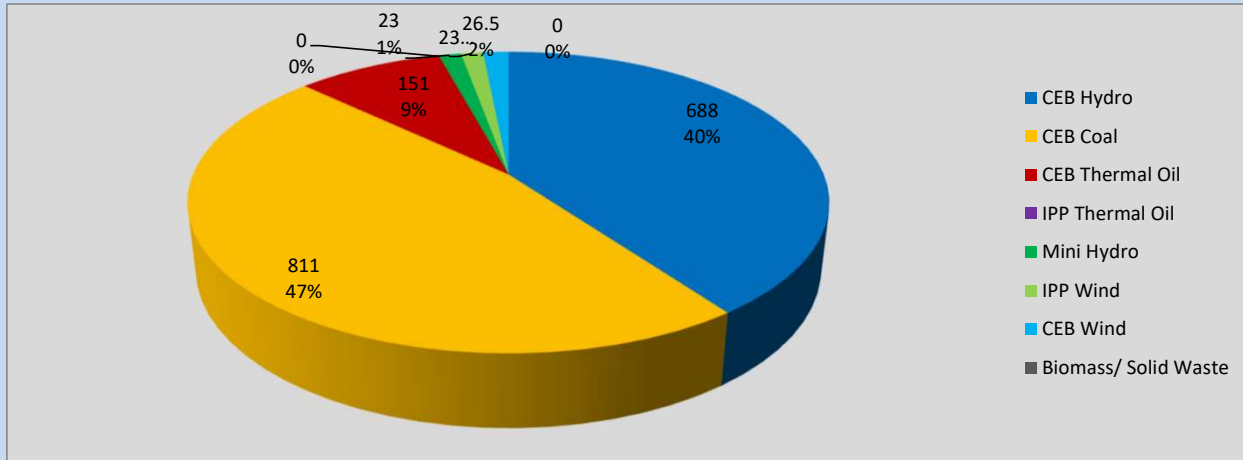
Plant	Installed Capacity	Plant Availability	Night peak Load	Plant Dispatch
	(MW)	(MW)	(MW)	(MWh)
Wimalasurendra	50	50	0	134
Old Laxapana	54	24	19	386
Canyon	60	60	30	391
New Laxapana	100	50	50	1,069
Polpitiya	90	45	38	766
Broadlands	35	0	9	32
Kotmale	201	201	61	730
Victoria	225	234	70	592
Randenigala	114	110	118	1,491
Rantambe	50	50	21	622
Ukuwela	37	20	21	332
Bowatenna	40	38	37	258
Upper Kotmale	150	150	75	341
Nilambe	3	3	0	14
Samanalawewa	120	120	119	1,301
Kukule	75	0	0	0
Inginiyagala	11	7	0	0
Udawalawe	6	3	0	48
Puttalam Coal I	270	270	267	6,026
Puttalam Coal II	270	270	273	6,096
Puttalam Coal III	270	270	271	6,213
KPS Small GTs	64	32	0	0
KPS GT 7	115	115	0	0
KCCP	161	158	151	3,686
Sapugaskanda A	70	48	0	19
Sapugaskanda B	70	63	0	802
Uthura Janani	26	16	0	44
Barge CEB	60	60	0	439
CEB-Thulhiriya	10	0	0	0
CEB-Kolonnawa	20	0	0	0
CEB-Mathugama	20	13	0	0
ACE Matara	24	0	0	0
Asia Power	50	0	0	0
Sojitz Kelanitissa	163	0	0	0
West Coast	270	270	0	0
Nothorn Power	36	0	0	0
ACE Embilipitiya	93	0	0	0
<b>Total</b>	<b>3,483</b>	<b>2,750</b>	<b>1,703</b>	<b>34,675</b>

Plant availability is the availability recorded at 6 am on

January 29, 2023

## Contribution to the Night Peak in MW

January 28, 2023

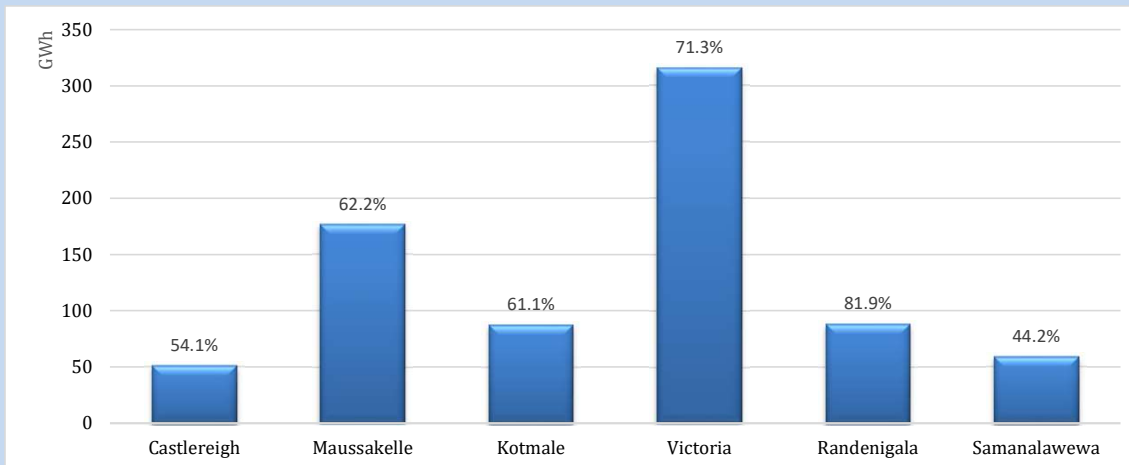


Night Peak*	1,723.0 MW
Day Peak	1,528.9 MW
Minimum Demand	1,134.4 MW

Above figures are excluding contribution from roof top solar, non telemetered solar and mini hydro plants

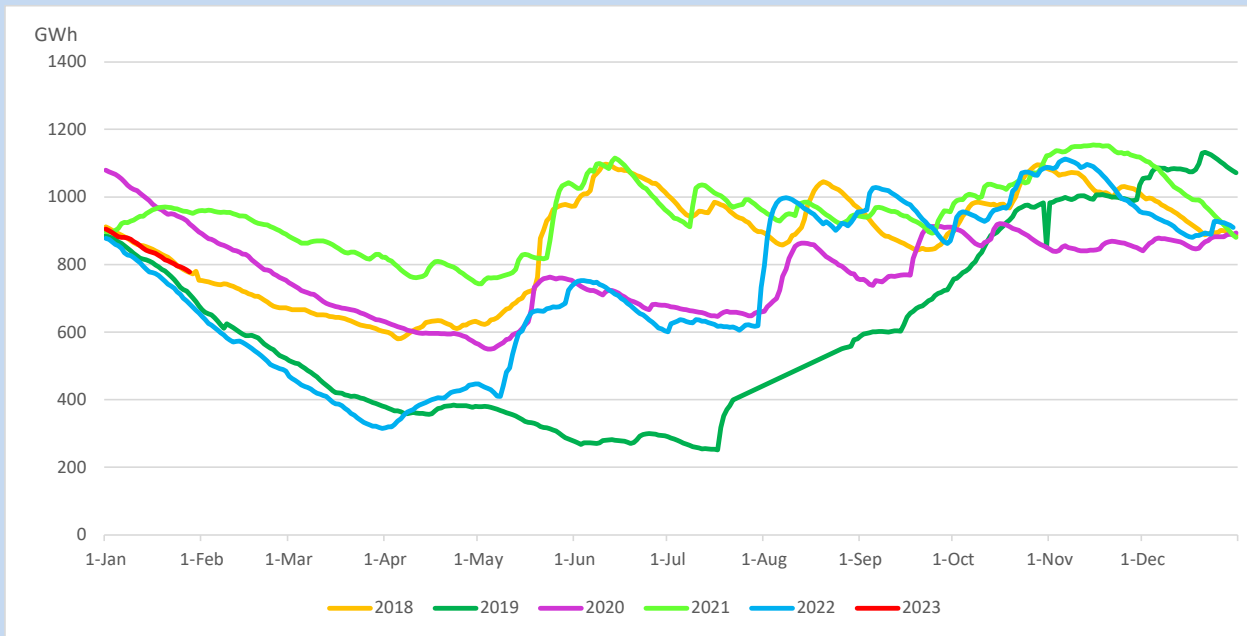
## Reservoir Levels -

as at 06.00 Hr on January 29, 2023

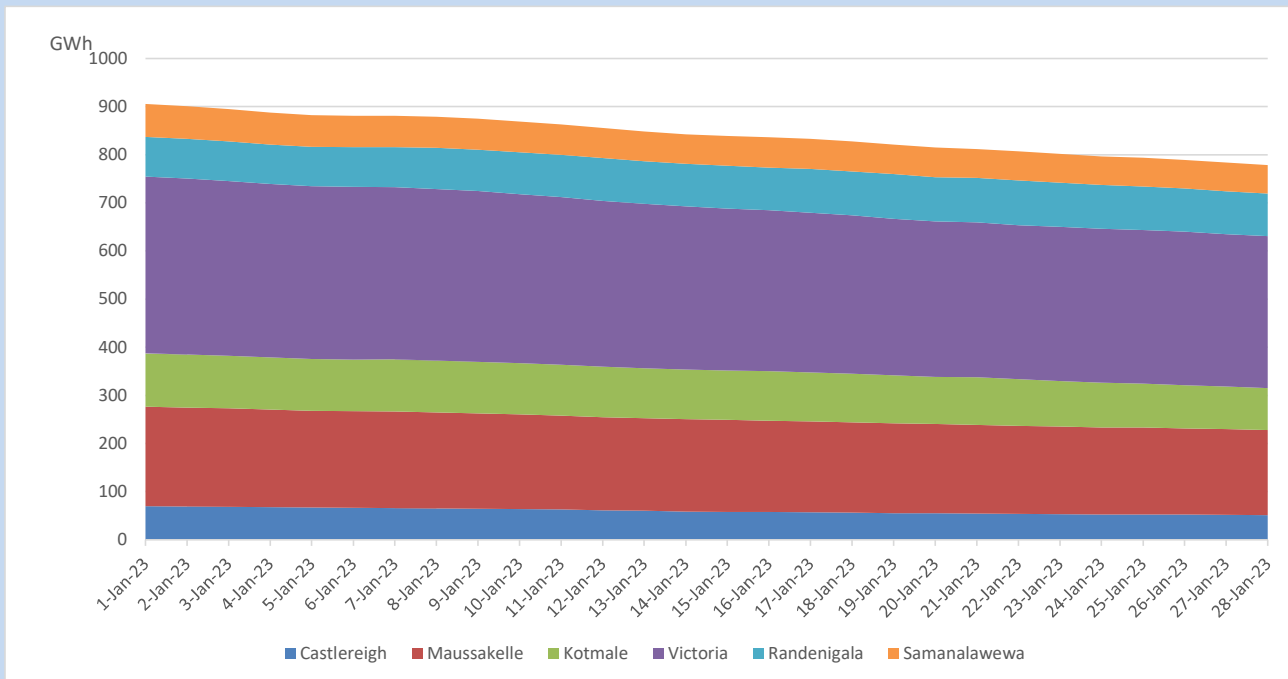


Total Reservoir Level	777.9 GWh
% of Total capacity	64.5%

## Comparison of Total Reservoir Storage Levels with Past Years

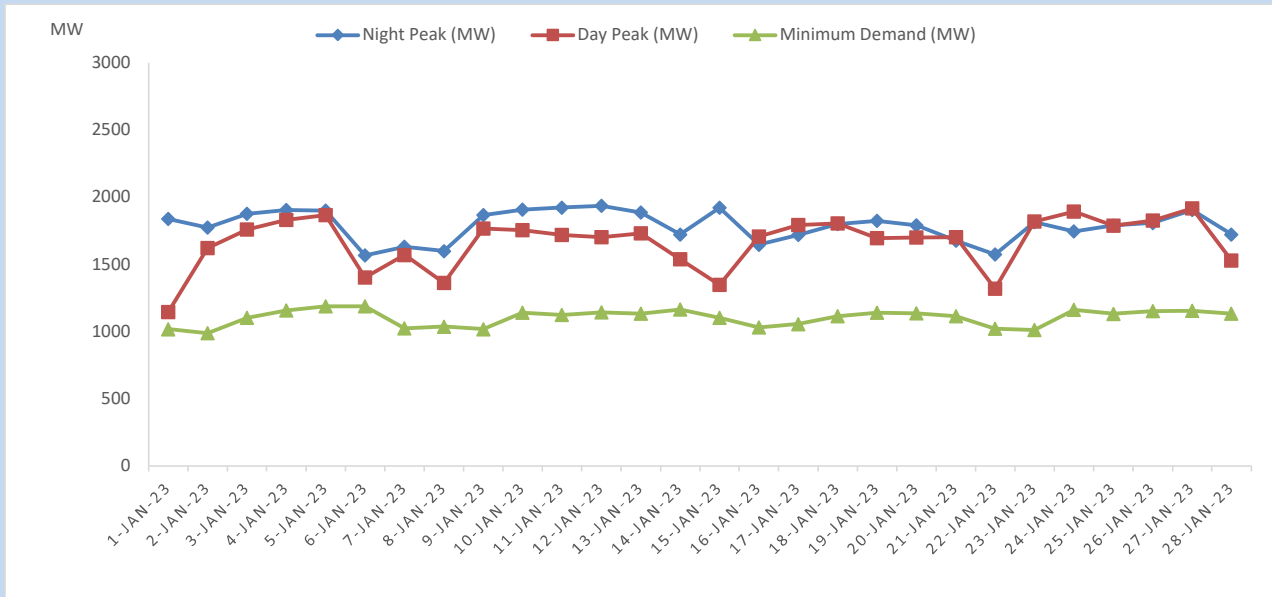


## Variation of Major Hydro Reservoir Levels in the current year (GWh)





## Variation of Demand during the current year

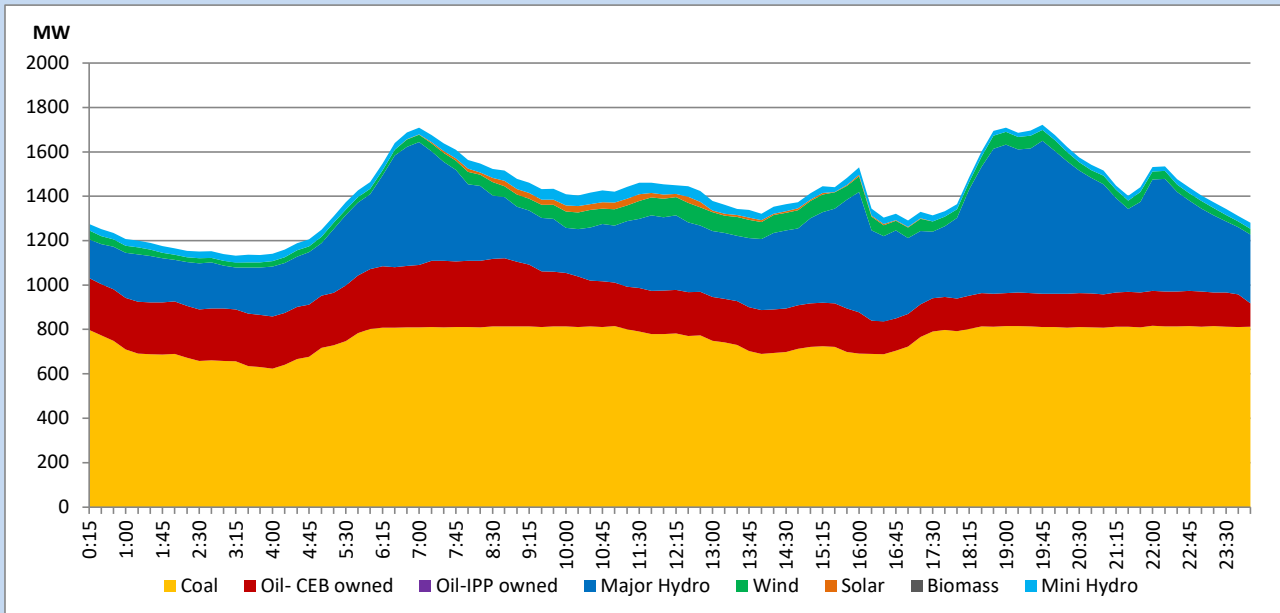


The above figures are excluding contribution from roof top solar, non telemetered solar and mini hydro plants

## Daily Load Curve of the Previous day

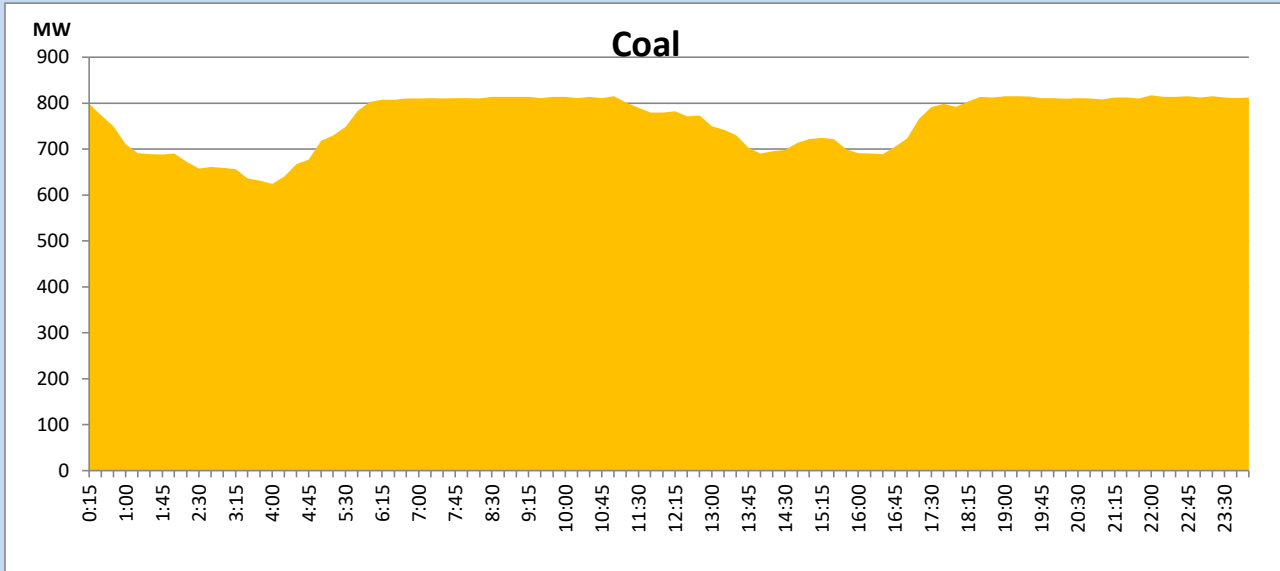
January 28, 2023

Solar and wind data is based on Telemetered Power Stations only



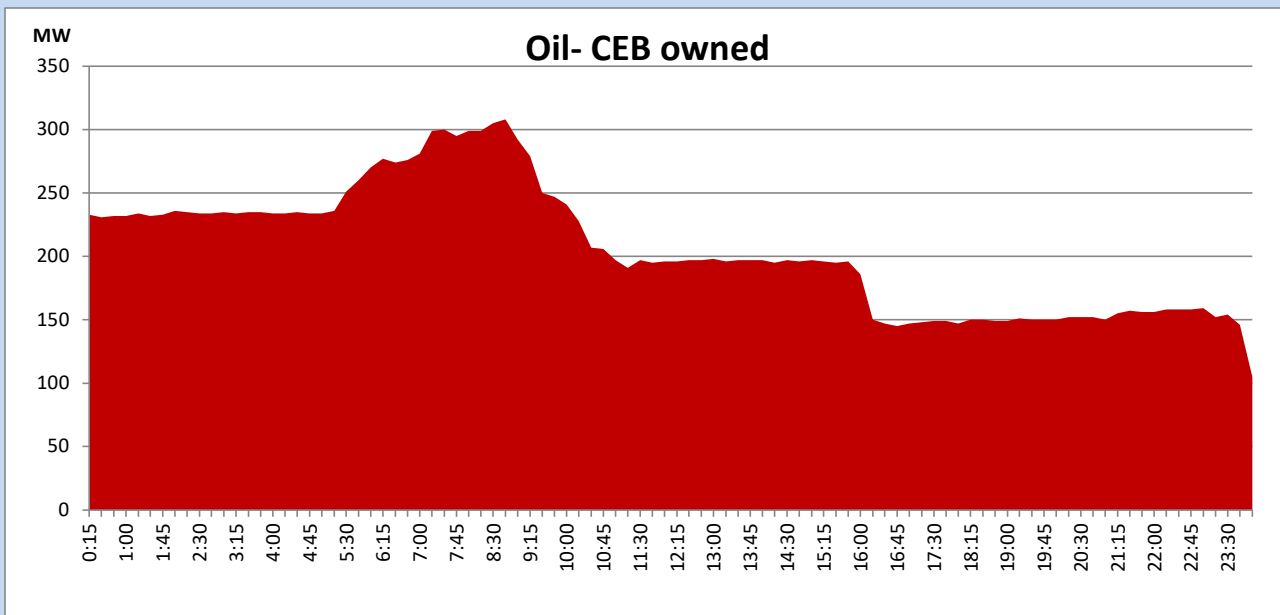
## Coal Generation during the day

January 28, 2023



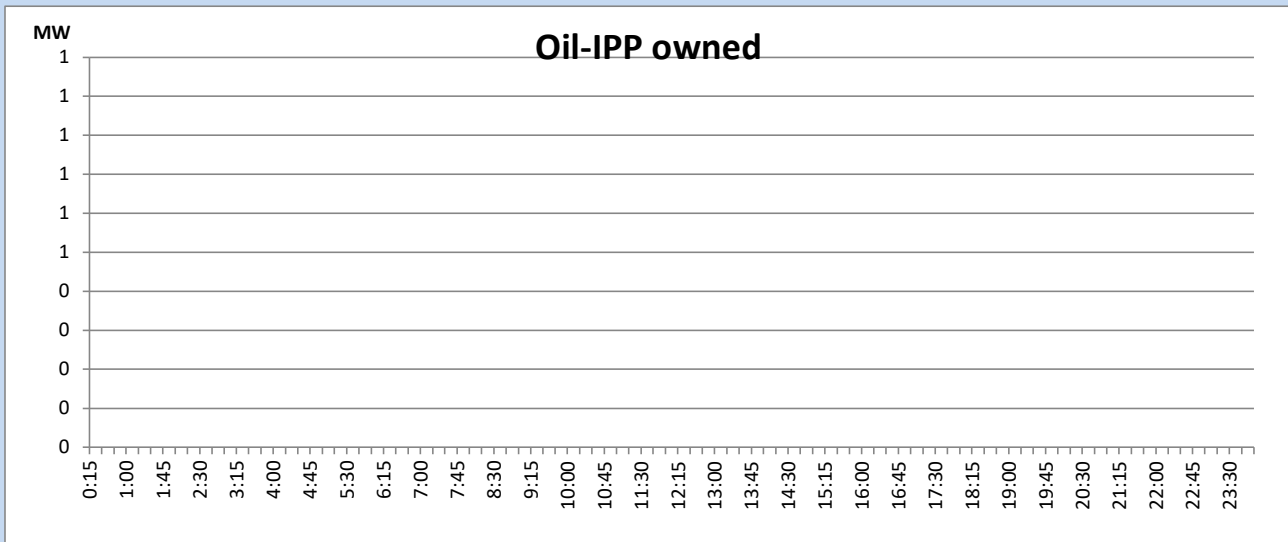
## CEB Oil Plant Generation during the day

January 28, 2023



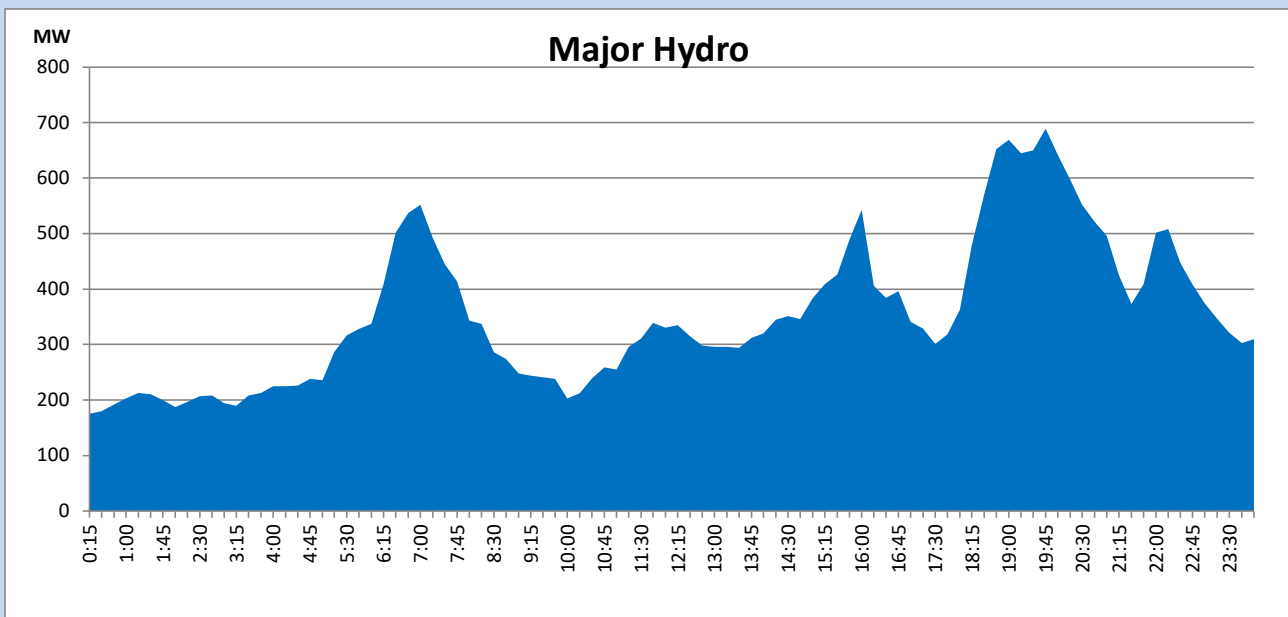
## IPP Oil Plant Generation during the day

January 28, 2023



## Major Hydro Generation during the day

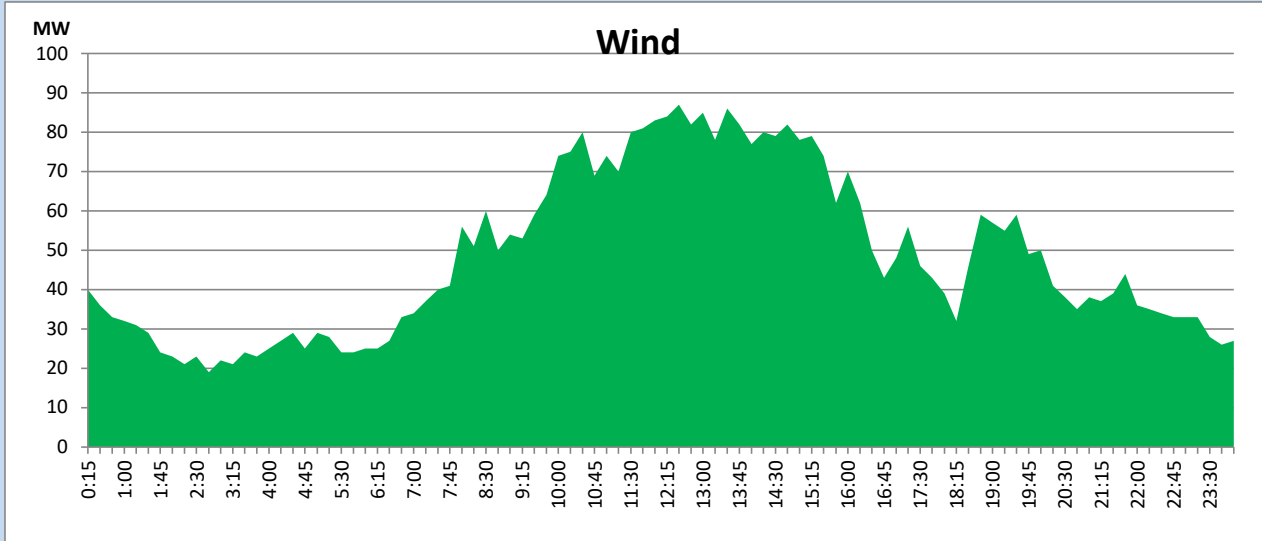
January 28, 2023



## Wind Generation during the day

January 28, 2023

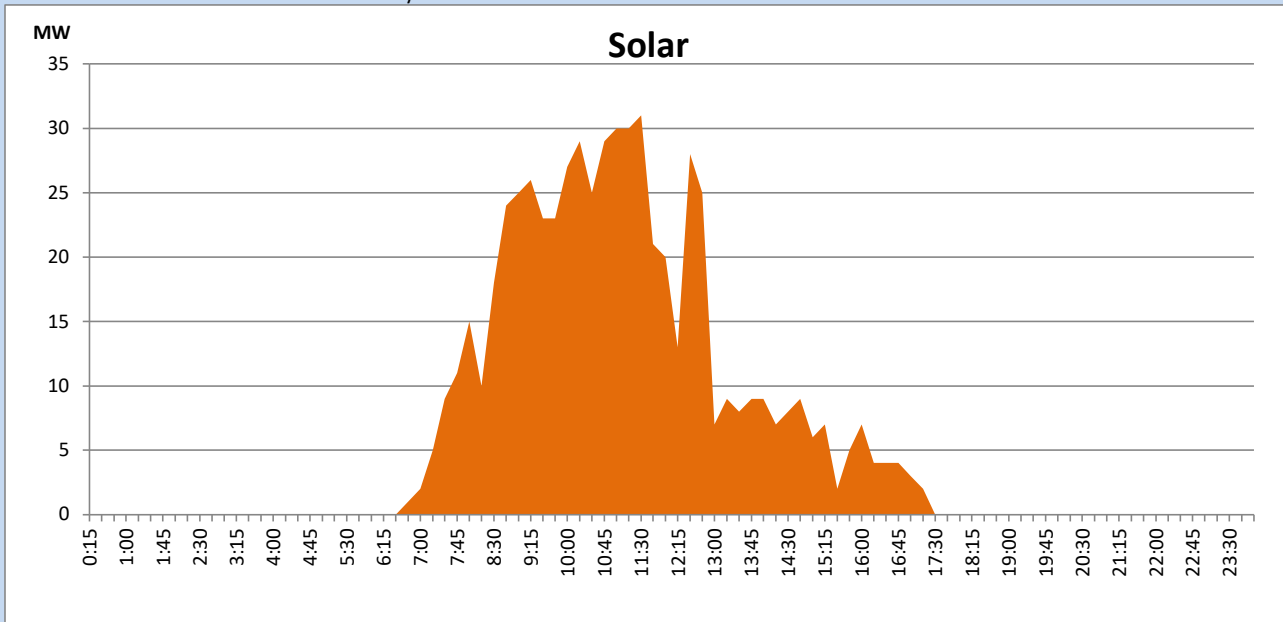
Based on Telemetered Power Stations only



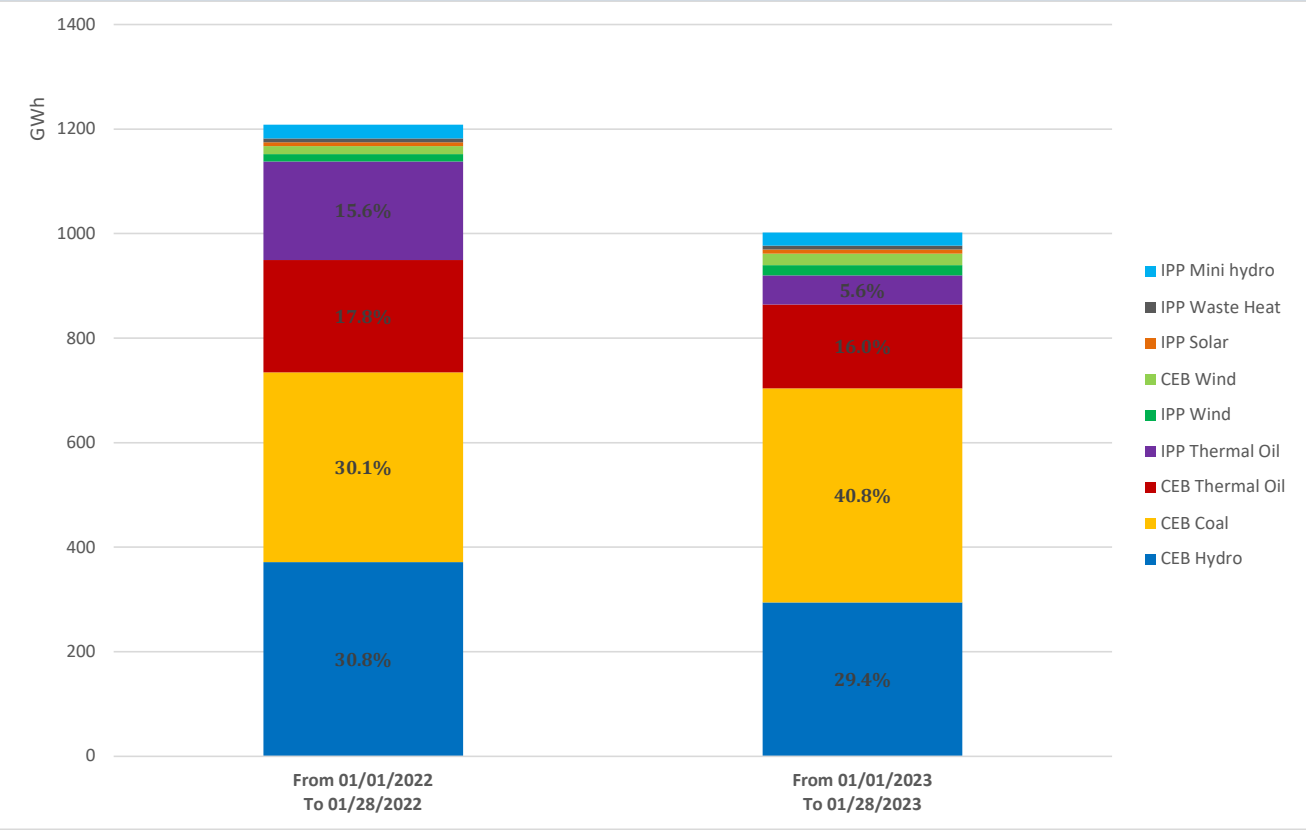
## Solar Generation during the day

January 28, 2023

Based on Telemetered Power Stations only



# Cumulative Dispatch Comparison with Last Year



### Thermal Plant Fuel types

Power Station	Primary Fuel
CEB Thermal	
Sapugaskanda 1	Heavy Fuel
Sapugaskanda 2	Heavy Fuel
Kelanitissa Small Gas Turbines	Auto Diesel
GT 7 - Kelanitissa	Auto Diesel
Kelanitissa CCY	Naphtha or Diesel
Lakvijaya 1	Coal
Lakvijaya 2	Coal
Lakvijaya 3	Coal
Uthuru Janani	Heavy Fuel
Barge CEB	Heavy Fuel

Power Station	Primary Fuel
Private Thermal	
West Coast	Auto Diesel / Heavy Fuel

### Major Incidents reported during the day

January 28, 2023

- 1) Rotational manual load shedding was carried out from 16:00hrs to 22:00hrs.