

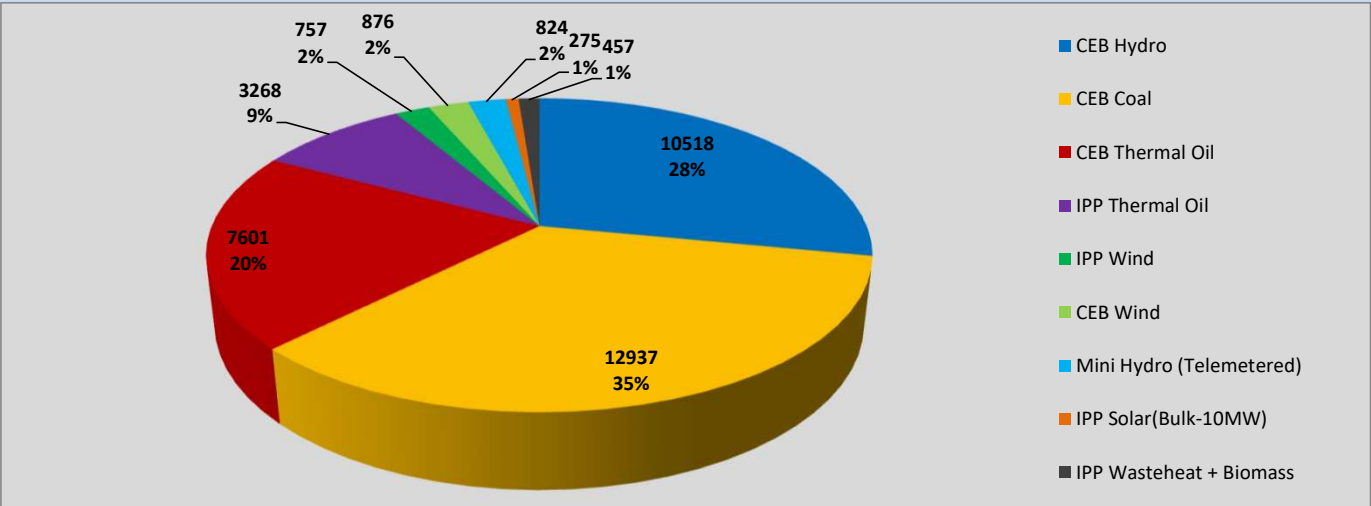
# Generation and Reservoirs Statistics

January 18, 2023



PUBLIC UTILITIES COMMISSION OF SRI LANKA

Daily Generation Mix in MWh



Total Generation (Excluding estimated figures) = 37,520 MWh

Estimated figures of CEB generation report

- Estimated unserved energy = 2.24 GWh
- Estimated Mini Hydro (Non telemetered) = 1696 MWh
- Estimated IPP Solar PV (Bulk 1-10MW) = 304MWh
- Estimated Solar Roof Top PV = 1480 MWh

Cumulative Dispatch

Following data excludes the contribution from roof top solar, non telemetered solar and mini hydro plants

For Current Month

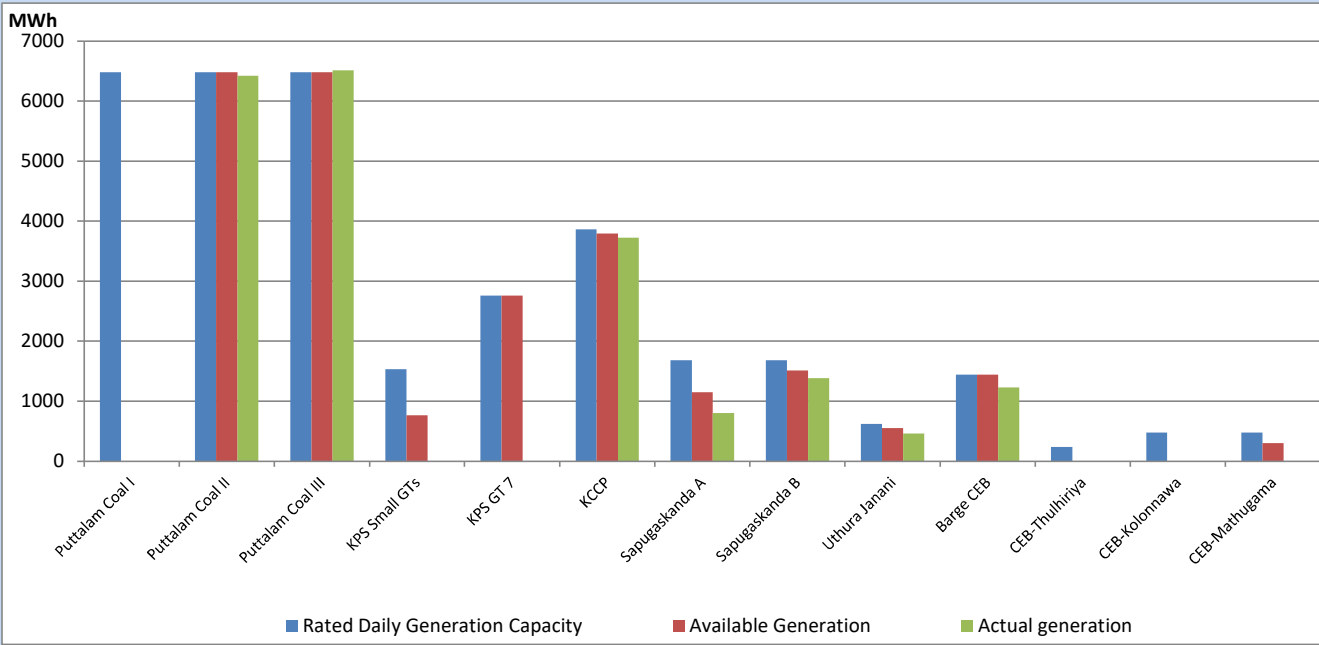
Category	Dispatch (GWh)	
CEB Hydro	198	31.04%
CEB Coal	234	36.79%
CEB Thermal Oil	100	15.71%
IPP Thermal	50	7.85%
SPP Wind	12	1.89%
CEB Wind	16	2.46%
Mini Hydro (Telemetered)	16	2.57%
IPP Solar(Bulk-10MW)	5	0.84%
IPP Wasteheat + BMP	5	0.85%
Total	637	

For Current Year

Category	Dispatch (GWh)	
CEB Hydro	198	31.04%
CEB Coal	234	36.79%
CEB Thermal Oil	100	15.71%
IPP Thermal	50	7.85%
SPP Wind	12	1.89%
CEB Wind	16	2.46%
Mini Hydro (Telemetered)	16	2.57%
IPP Solar(Bulk-10MW)	5	0.84%
IPP Wasteheat	5	0.85%
Total	637	

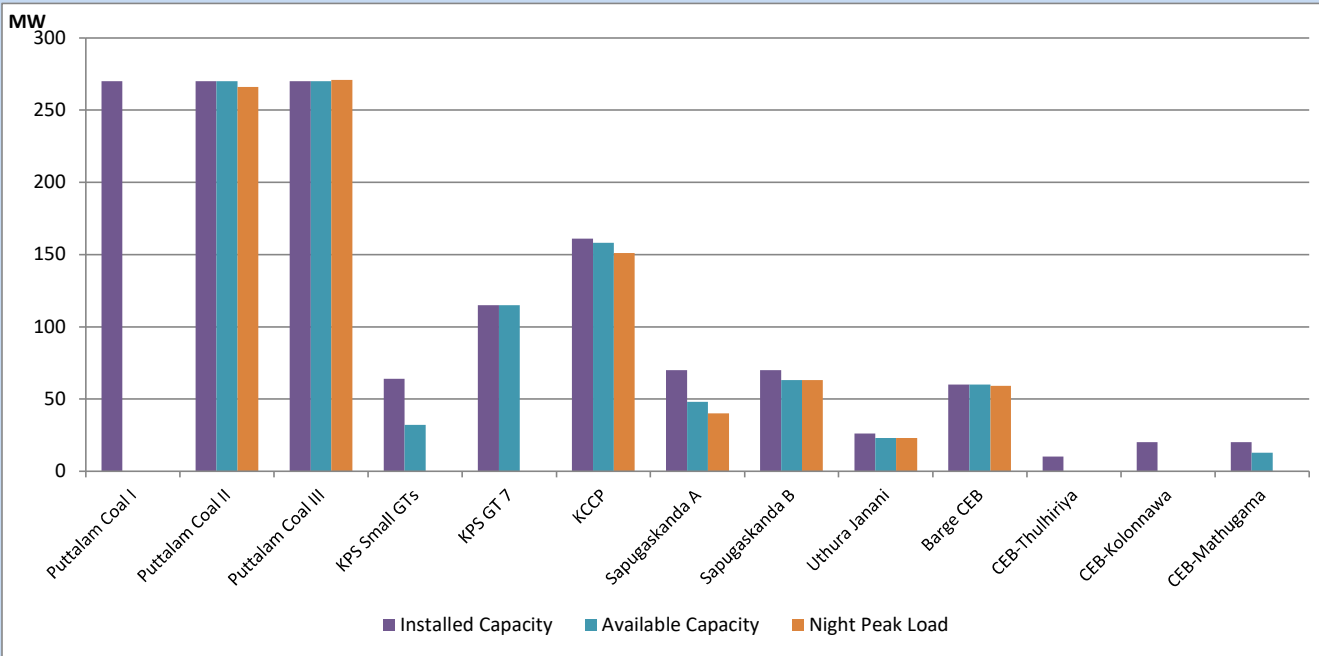
CEB owned Thermal Plant Dispatch

January 18, 2023



Available Generation is estimated based on plant availability at 6.00am on January 19, 2023

CEB owned Thermal Plant Loading at the Night Peak

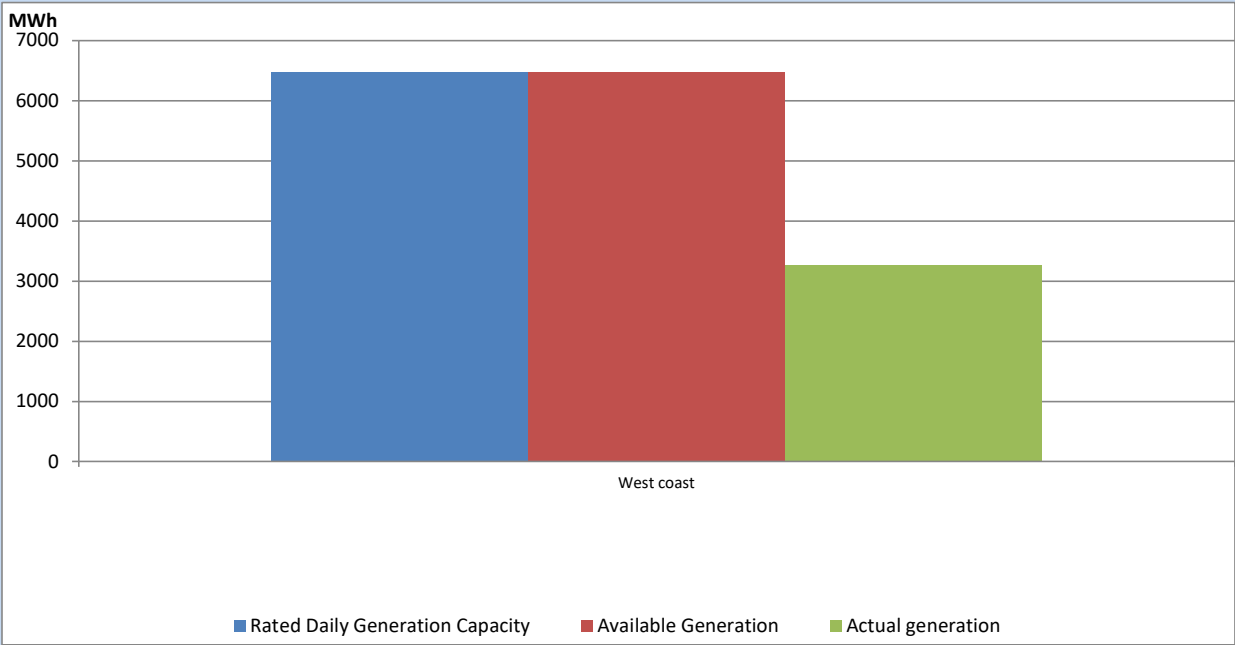


Note- Plant avilability is recorded at 6.00 am on January 19, 2023

IPP owned Thermal Plant Dispatch

January 18, 2023

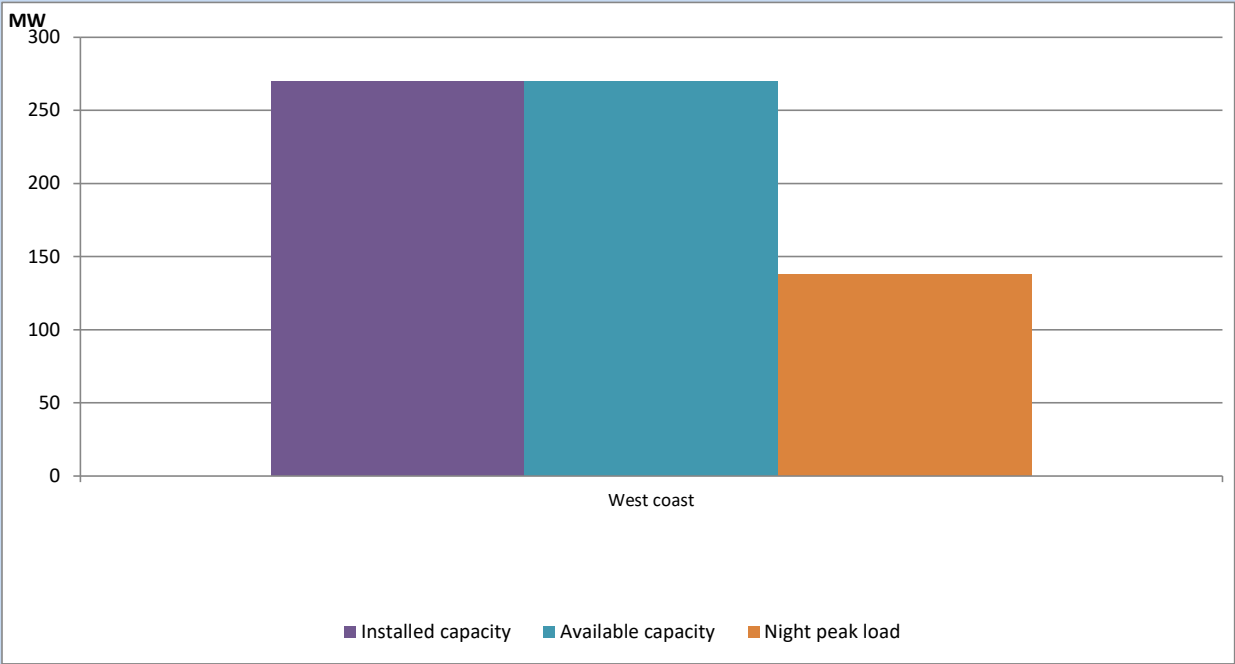
Asia Power, V Power Pallekale, Vpower Galle, V Power Horana, Vpower Hambantota, Vpower Valachchena and Altaqa Mahiyanganaya, Sojitz kelanitissa are not available due to expiration of PPAs



Available Generation is estimated based on plant availability at 6.00am on

January 19, 2023

IPP owned Thermal Plant Loading at the Night Peak

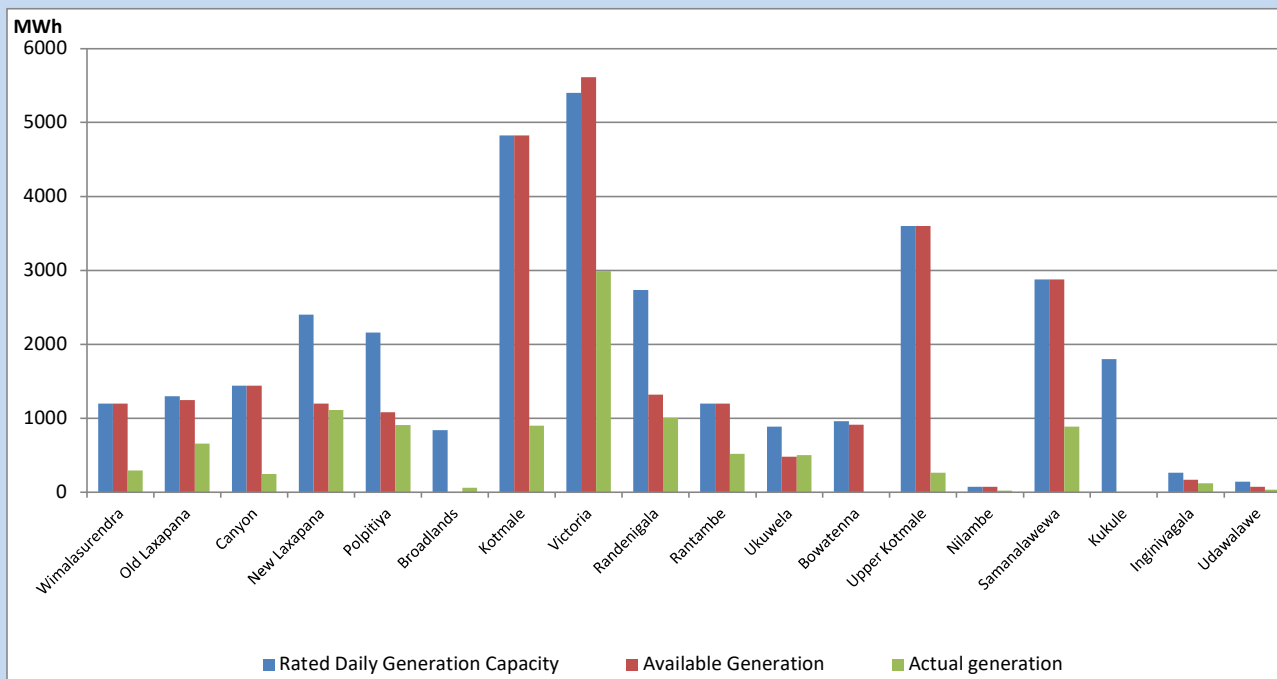


Note- Plant availability is recorded at 6.00 am on

January 19, 2023

## Major Hydro Plant Dispatch

January 18, 2023

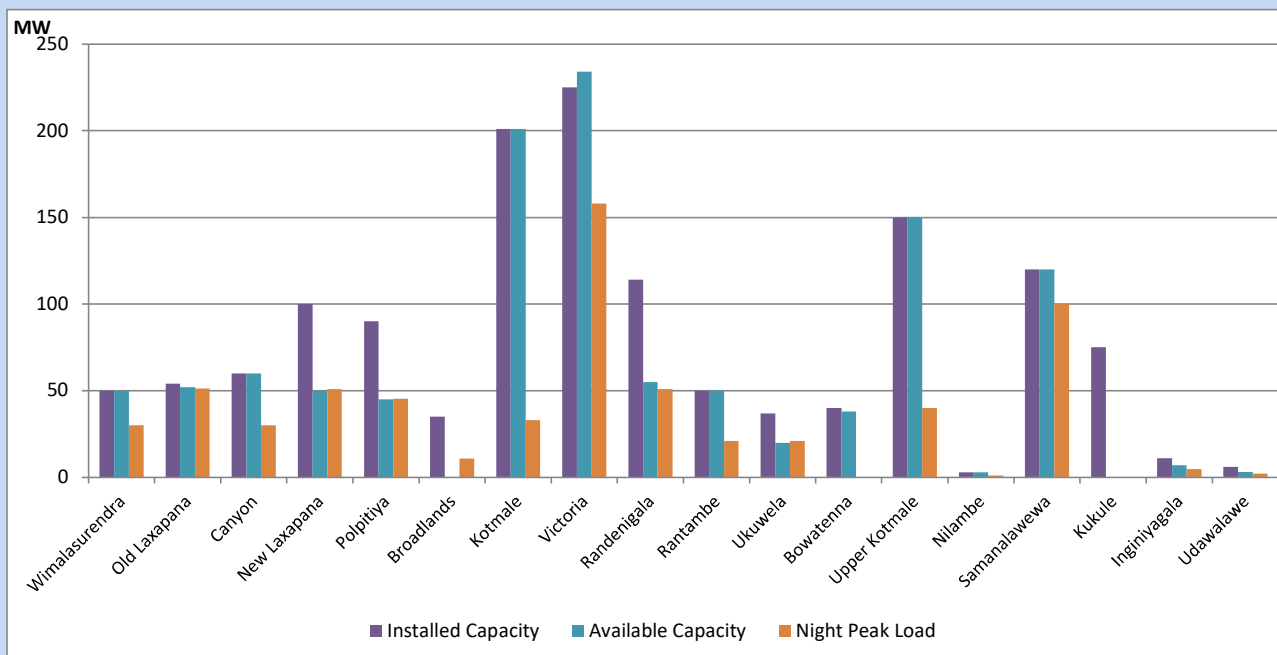


Available Generation is estimated based on plant availability at 6.00am on  
Broadlands power plant is operating in the Commissioning Stage

January 19, 2023

## Major Hydro Plant Loading at Night Peak

January 18, 2023



Note- Plant availability is recorded at 6.00 am on  
Broadlands power plant is operating in the Commissioning Stage

January 19, 2023

## Summary of Major Plant performance

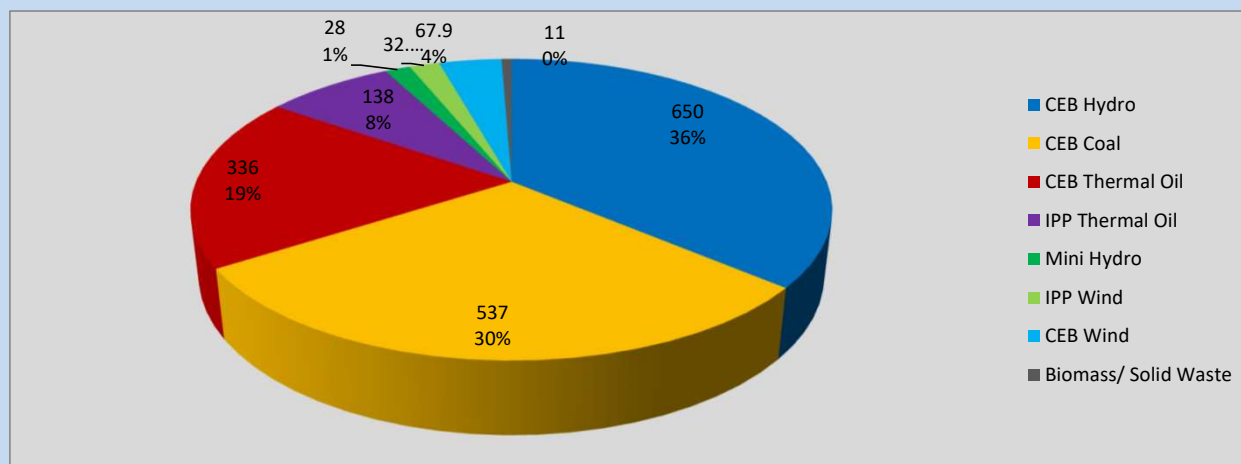
Plant	Installed Capacity	Plant Availability	Night peak Load	Plant Dispatch
	(MW)	(MW)	(MW)	(MWh)
Wimalasurendra	50	50	30	294
Old Laxapana	54	52	51	655
Canyon	60	60	30	246
New Laxapana	100	50	51	1,112
Polpitiya	90	45	45	910
Broadlands	35	0	11	59
Kotmale	201	201	33	900
Victoria	225	234	158	2,989
Randenigala	114	55	51	1,005
Rantambe	50	50	21	522
Ukuwela	37	20	21	499
Bowatenna	40	38	0	0
Upper Kotmale	150	150	40	264
Nilambe	3	3	1	21
Samanalawewa	120	120	100	886
Kukule	75	0	0	0
Inginiyagala	11	7	5	120
Udawalawe	6	3	2	36
Puttalam Coal I	270	0	0	0
Puttalam Coal II	270	270	266	6,424
Puttalam Coal III	270	270	271	6,513
KPS Small GTs	64	32	0	0
KPS GT 7	115	115	0	0
KCCP	161	158	151	3,725
Sapugaskanda A	70	48	40	804
Sapugaskanda B	70	63	63	1,384
Uthura Janani	26	23	23	461
Barge CEB	60	60	59	1,227
CEB-Thulhiriya	10	0	0	0
CEB-Kolonnawa	20	0	0	0
CEB-Mathugama	20	13	0	0
ACE Matara	24	0	0	0
Asia Power	50	0	0	0
Sojitz Kelanitissa	163	0	0	0
West Coast	270	270	138	3,268
Nothern Power	36	0	0	0
ACE Embilipitiya	93	0	0	0
Total	3,483	2,460	1,800	37,513

Plant availability is the availability recorded at 6 am on

January 19, 2023

## Contribution to the Night Peak in MW

January 18, 2023

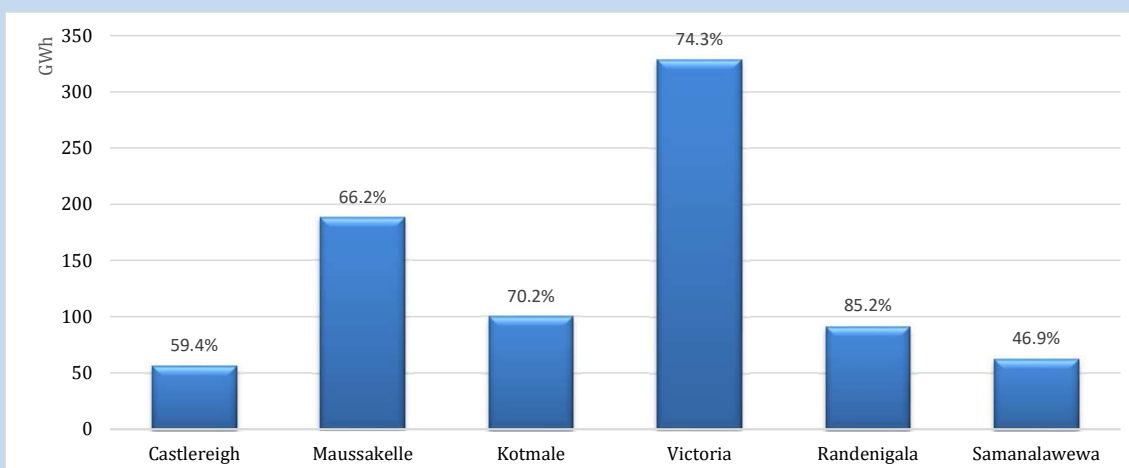


Night Peak*	1,799.8 MW
Day Peak	1,803.4 MW
Minimum Demand	1,115.4 MW

Above figures are excluding contribution from roof top solar, non telemetered solar and mini hydro plants

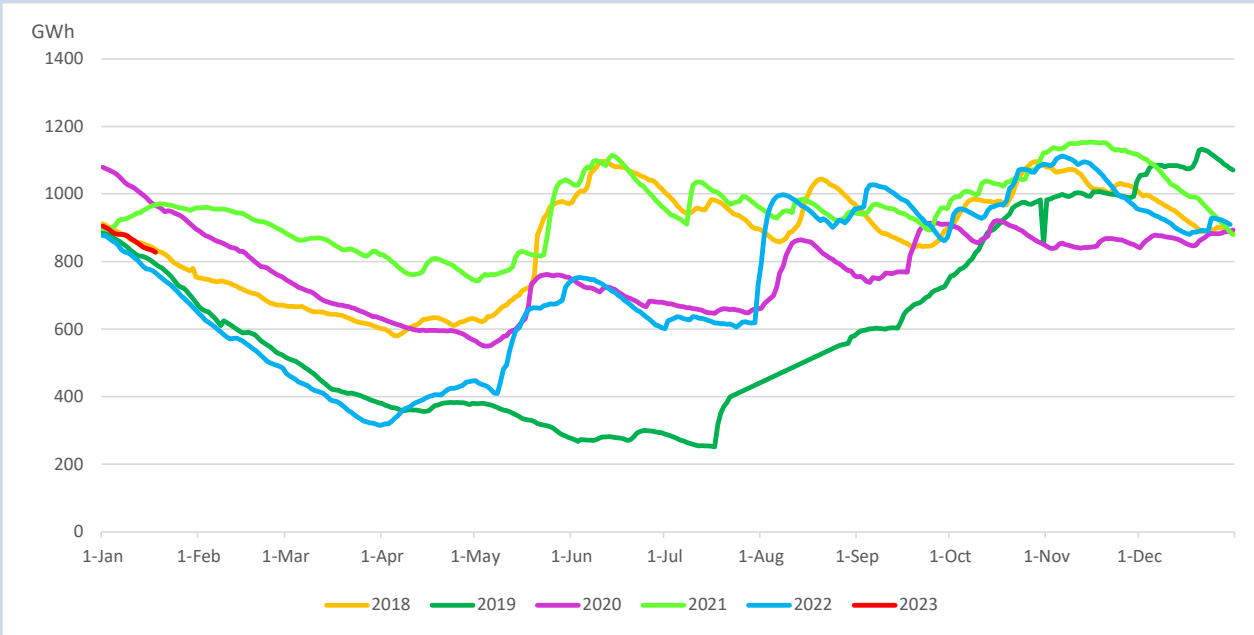
## Reservoir Levels -

as at 06.00 Hr on January 19, 2023

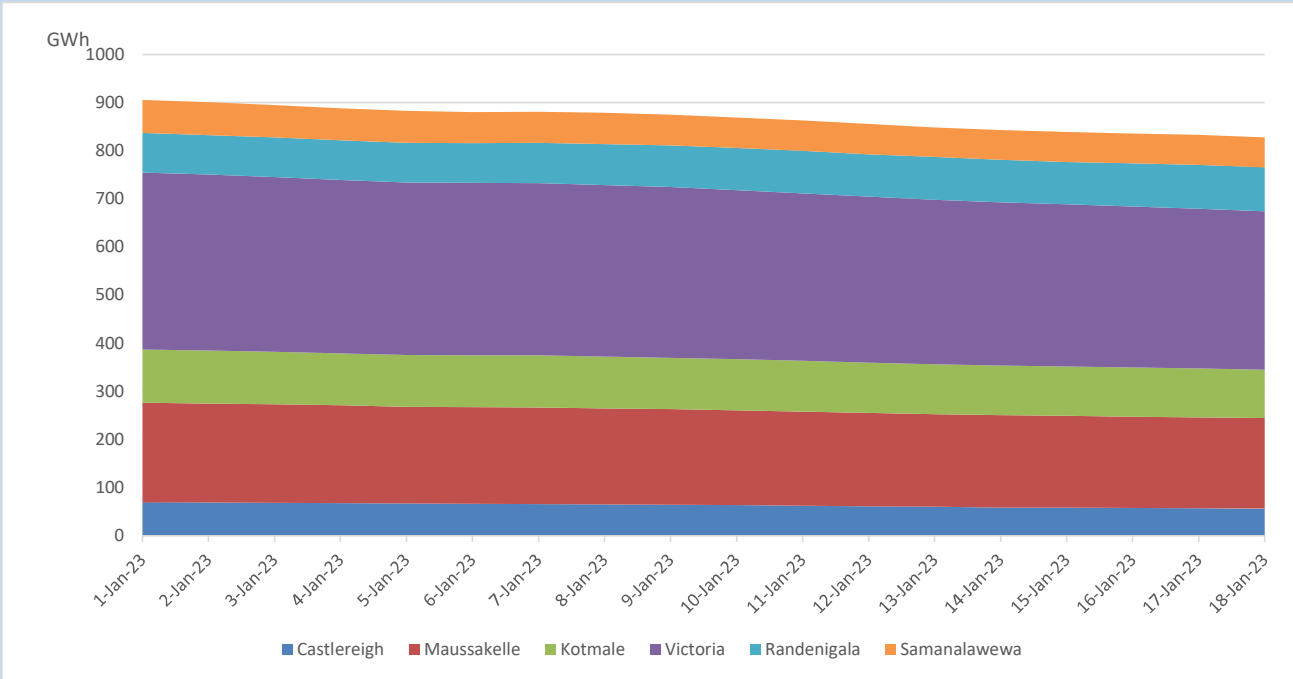


Total Reservoir Level	827.8 GWh
% of Total capacity	68.7%

Comparison of Total Reservoir Storage Levels with Past Years

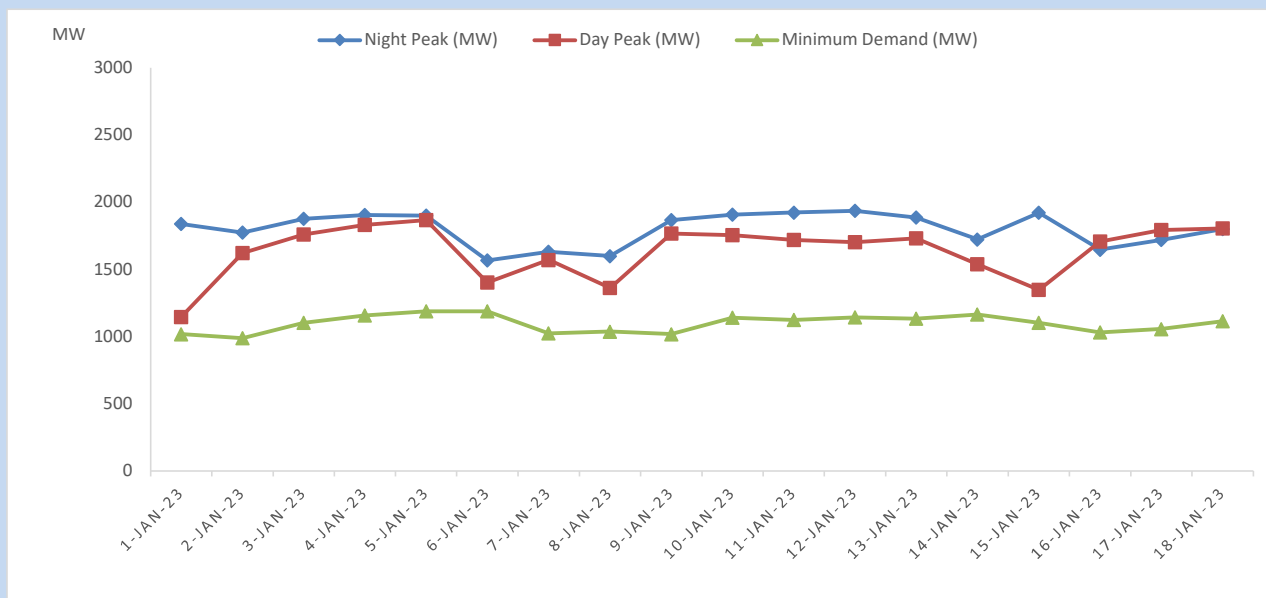


Variation of Major Hydro Reservoir Levels in the current year (GWh)





## Variation of Demand during the current year

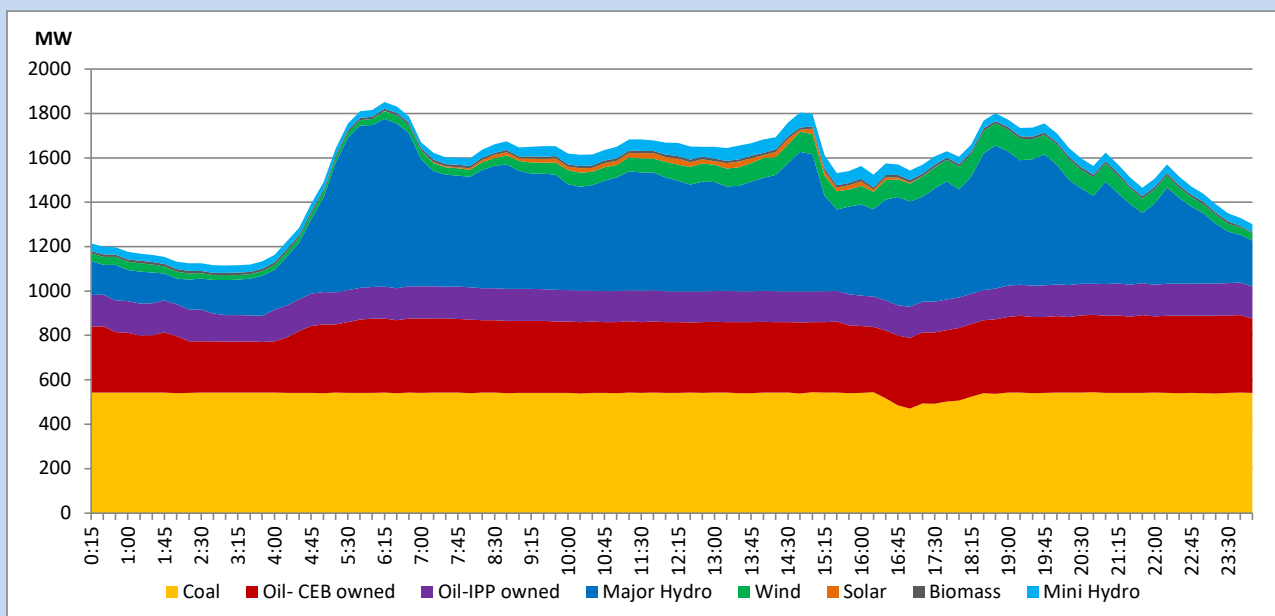


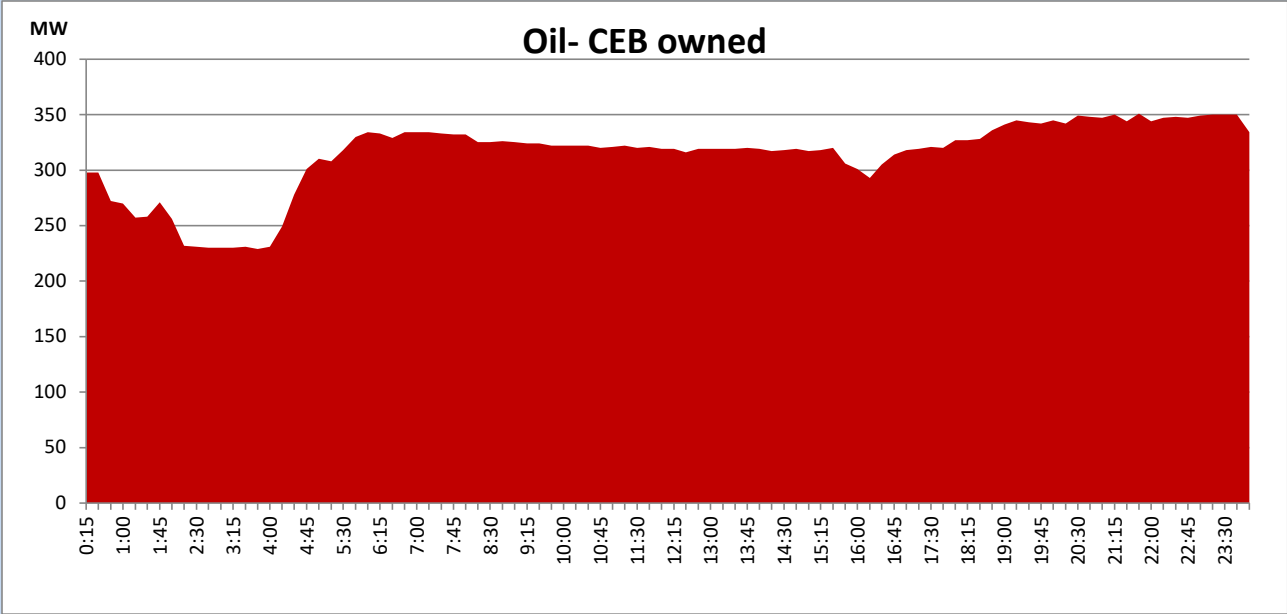
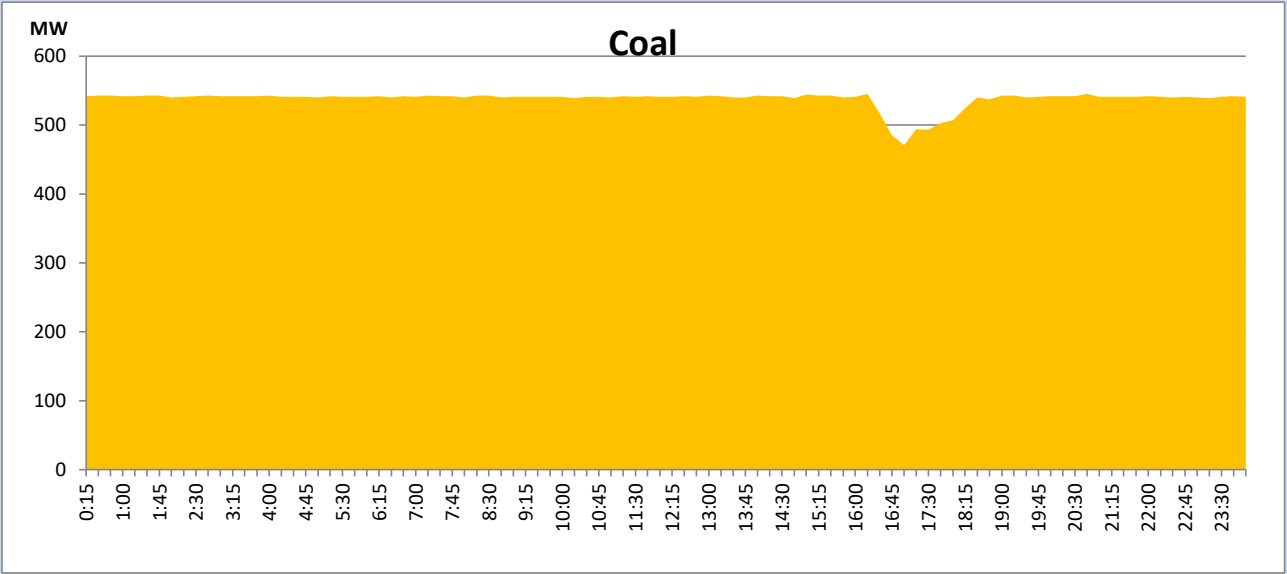
The above figures are excluding contribution from roof top solar, non telemetered solar and mini hydro plants

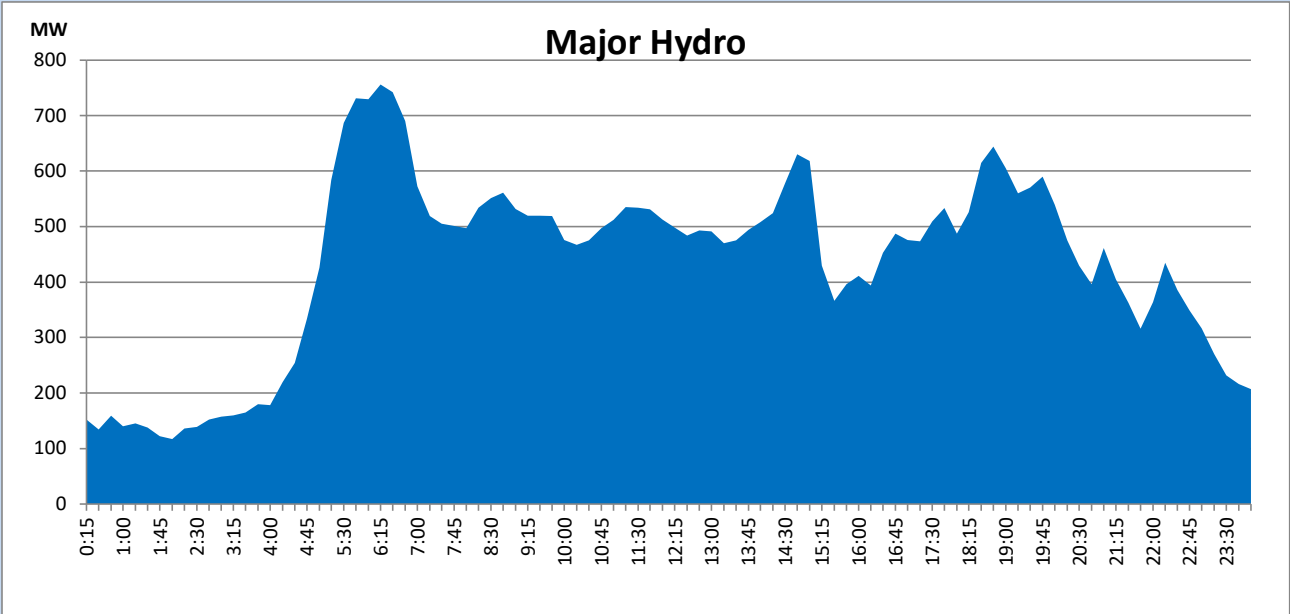
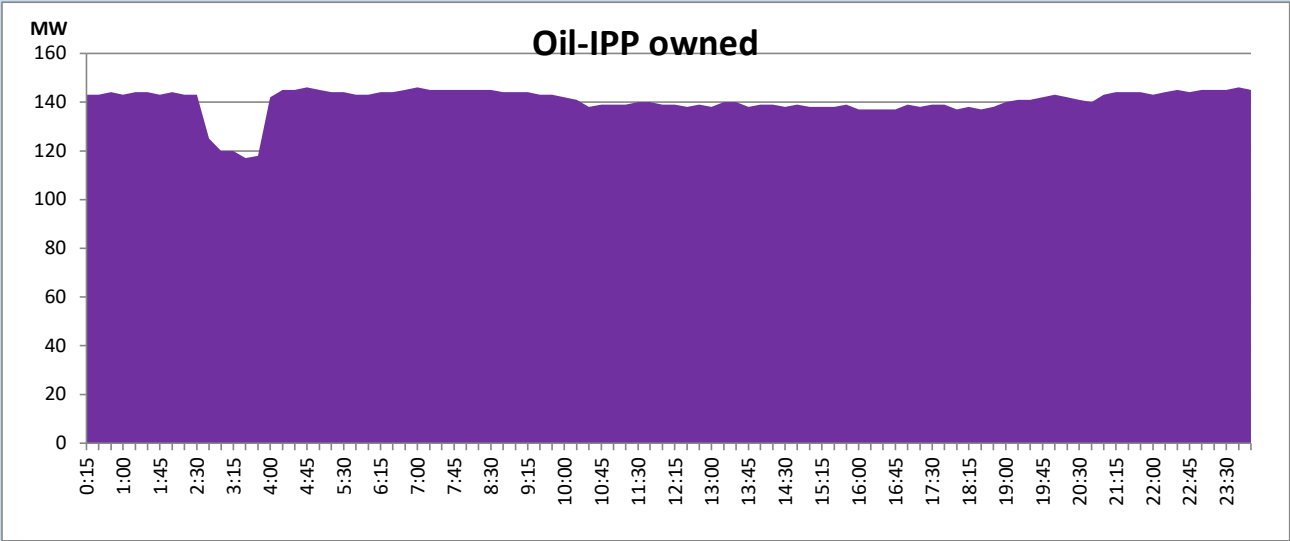
## Daily Load Curve of the Previous day

January 17, 2023

Solar and wind data is based on Telemetered Power Stations only



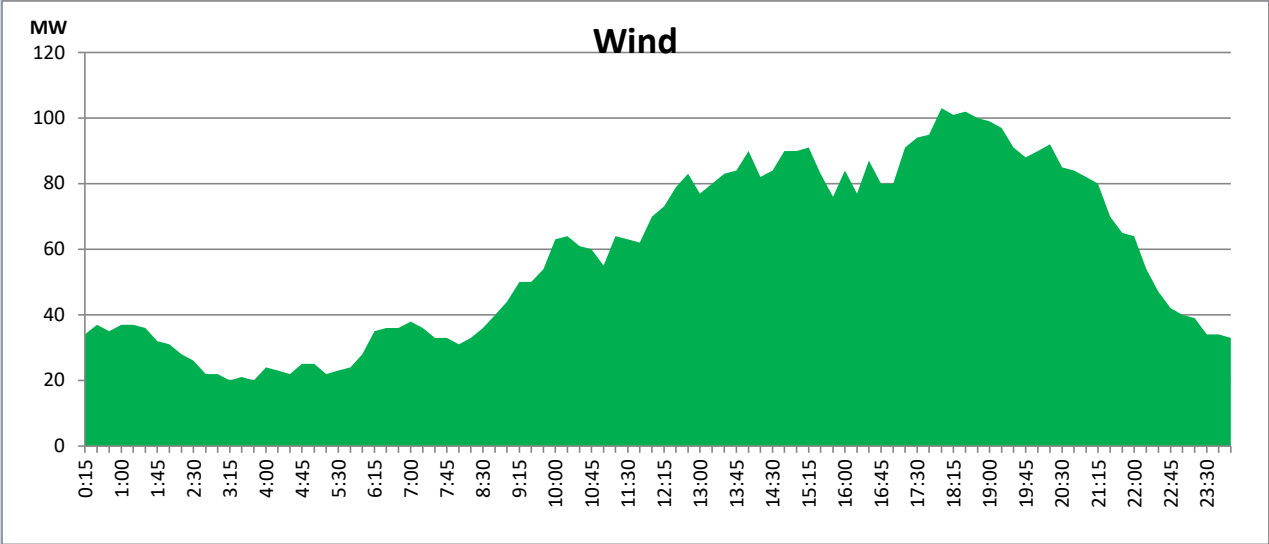




Wind Generation during the Previous day

January 17, 2023

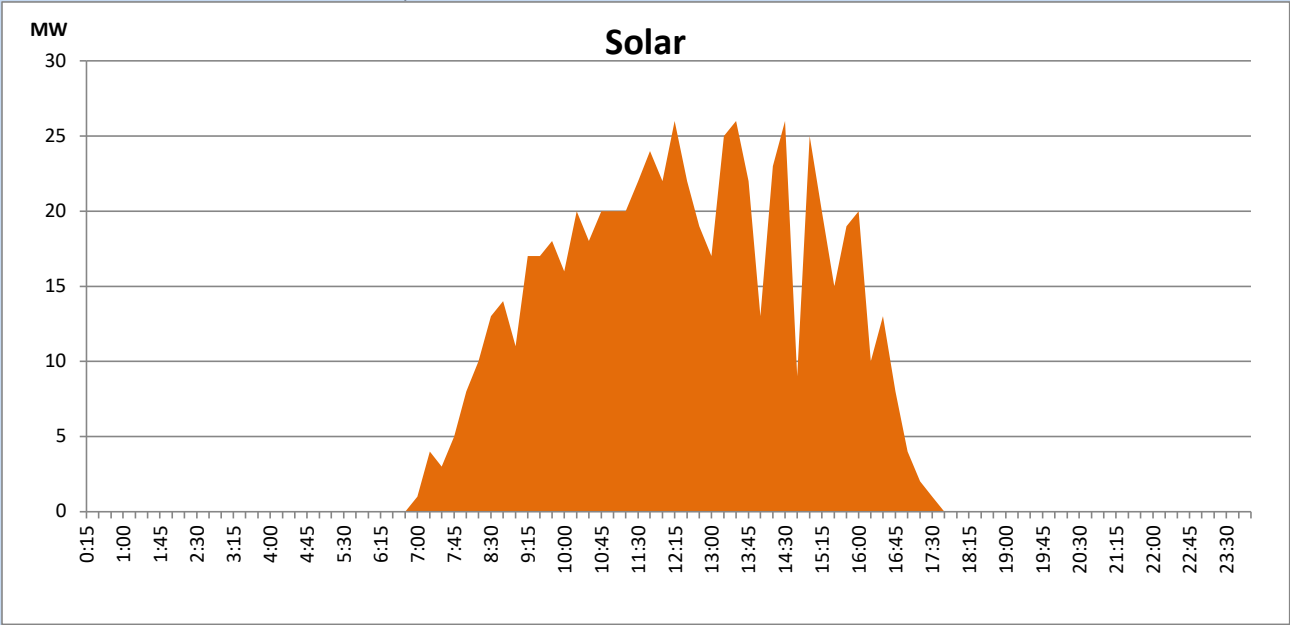
Based on Telemetered Power Stations only



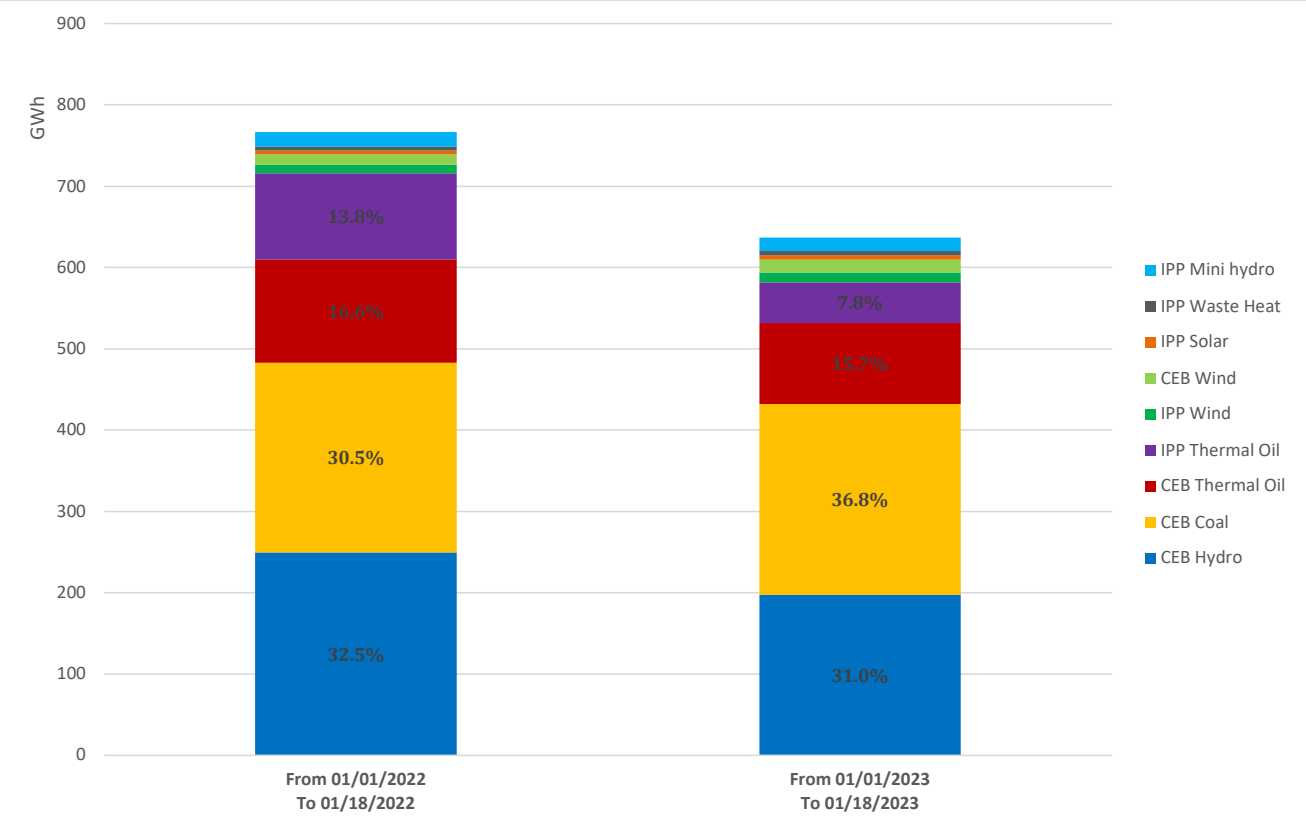
Solar Generation during the Previous day

January 17, 2023

Based on Telemetered Power Stations only



# Cumulative Dispatch Comparison with Last Year



Thermal Plant Fuel types

Power Station	Primary Fuel
CEB Thermal	
Sapugaskanda 1	Heavy Fuel
Sapugaskanda 2	Heavy Fuel
Kelanitissa Small Gas Turbines	Auto Diesel
GT 7 - Kelanitissa	Auto Diesel
Kelanitissa CCY	Naphtha or Diesel
Lakvijaya 1	Coal
Lakvijaya 2	Coal
Lakvijaya 3	Coal
Uthuru Janani	Heavy Fuel
Barge CEB	Heavy Fuel

Power Station	Primary Fuel
Private Thermal	
West Coast	Auto Diesel / Heavy Fuel

Major Incidents reported during the day

January 18, 2023

- 1) Rotational manual load shedding was carried out from 15:00hrs to 22:00hrs.