

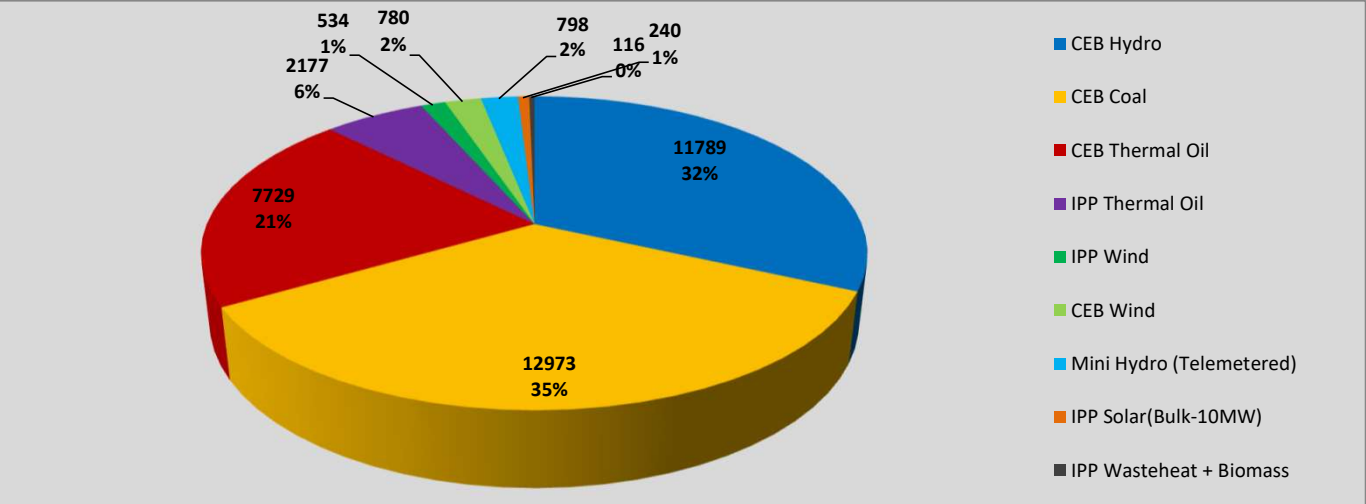
Generation and Reservoirs Statistics

January 17, 2023



PUBLIC UTILITIES COMMISSION OF SRI LANKA

Daily Generation Mix in MWh



Total Generation (Excluding estimated figures) = 37,140 MWh

Estimated figures of CEB generation report

- Estimated unserved energy = 2.27 GWh
- Estimated Mini Hydro (Non telemetered) = 1722 MWh
- Estimated IPP Solar PV (Bulk 1-10MW) = 304MWh
- Estimated Solar Roof Top PV = 1480 MWh

Cumulative Dispatch

Following data excludes the contribution from roof top solar, non telemetered solar and mini hydro plants

For Current Month

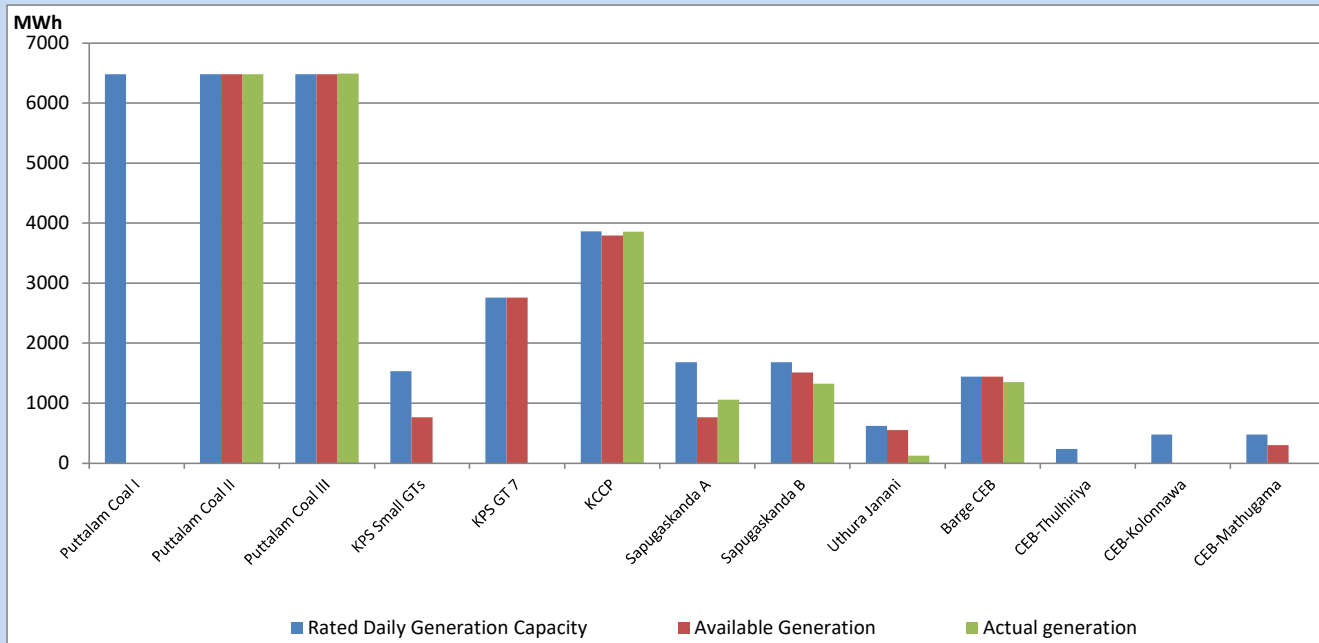
Category	Dispatch (GWh)	
CEB Hydro	187	31.23%
CEB Coal	221	36.94%
CEB Thermal Oil	92	15.43%
IPP Thermal	47	7.79%
SPP Wind	11	1.88%
CEB Wind	15	2.46%
Mini Hydro (Telemetered)	16	2.60%
IPP Solar(Bulk-10MW)	5	0.85%
IPP Wasteheat + BMP	5	0.83%
Total	599	

For Current Year

Category	Dispatch (GWh)	
CEB Hydro	187	31.23%
CEB Coal	221	36.94%
CEB Thermal Oil	92	15.43%
IPP Thermal	47	7.79%
SPP Wind	11	1.88%
CEB Wind	15	2.46%
Mini Hydro (Telemetered)	16	2.60%
IPP Solar(Bulk-10MW)	5	0.85%
IPP Wasteheat	5	0.83%
Total	599	

CEB owned Thermal Plant Dispatch

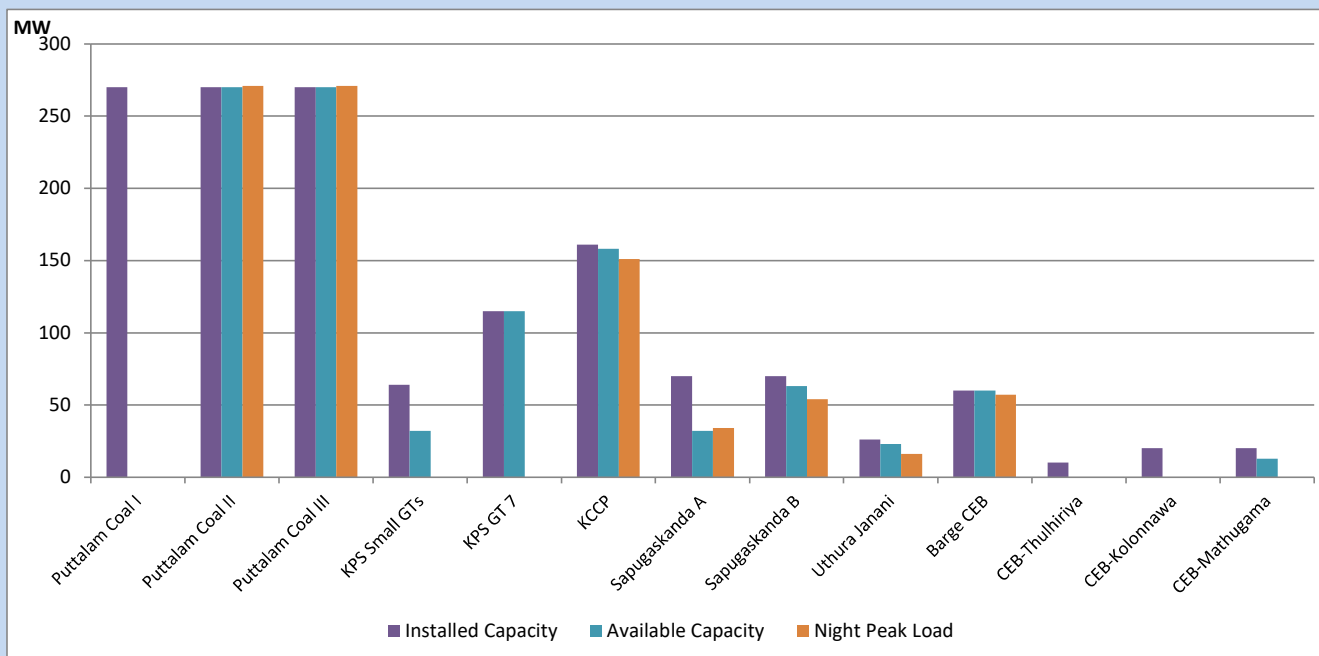
January 17, 2023



Available Generation is estimated based on plant availability at 6.00am on

January 18, 2023

CEB owned Thermal Plant Loading at the Night Peak



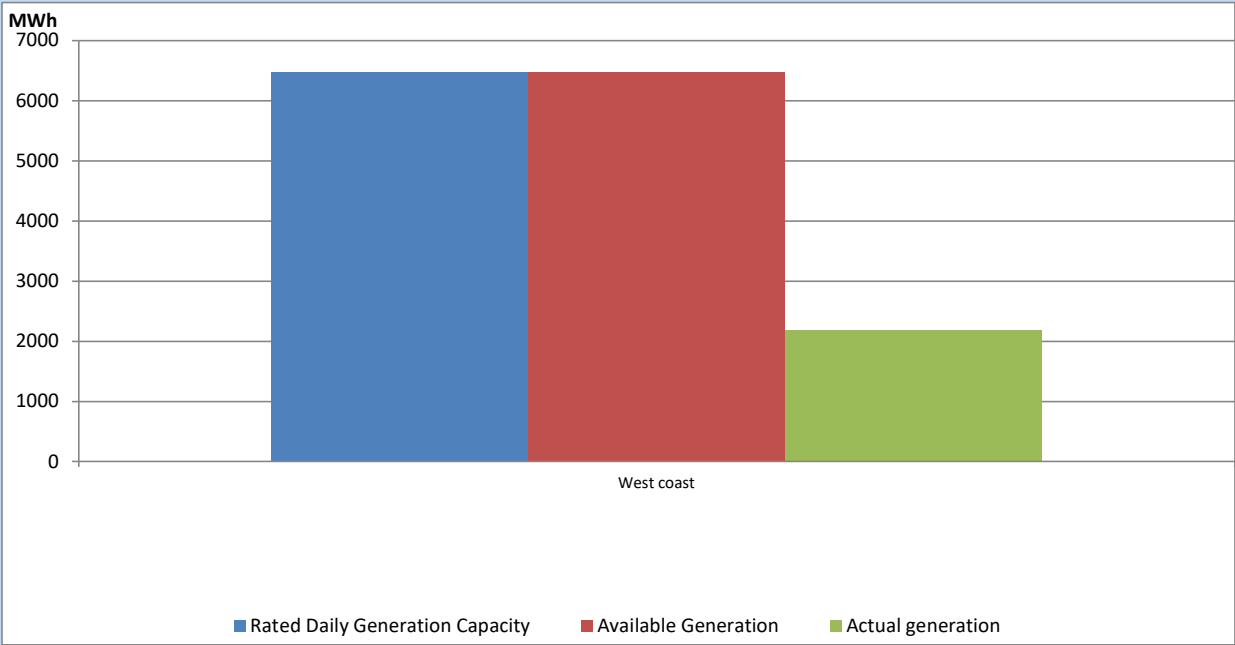
Note- Plant availability is recorded at 6.00 am on

January 18, 2023

IPP owned Thermal Plant Dispatch

January 17, 2023

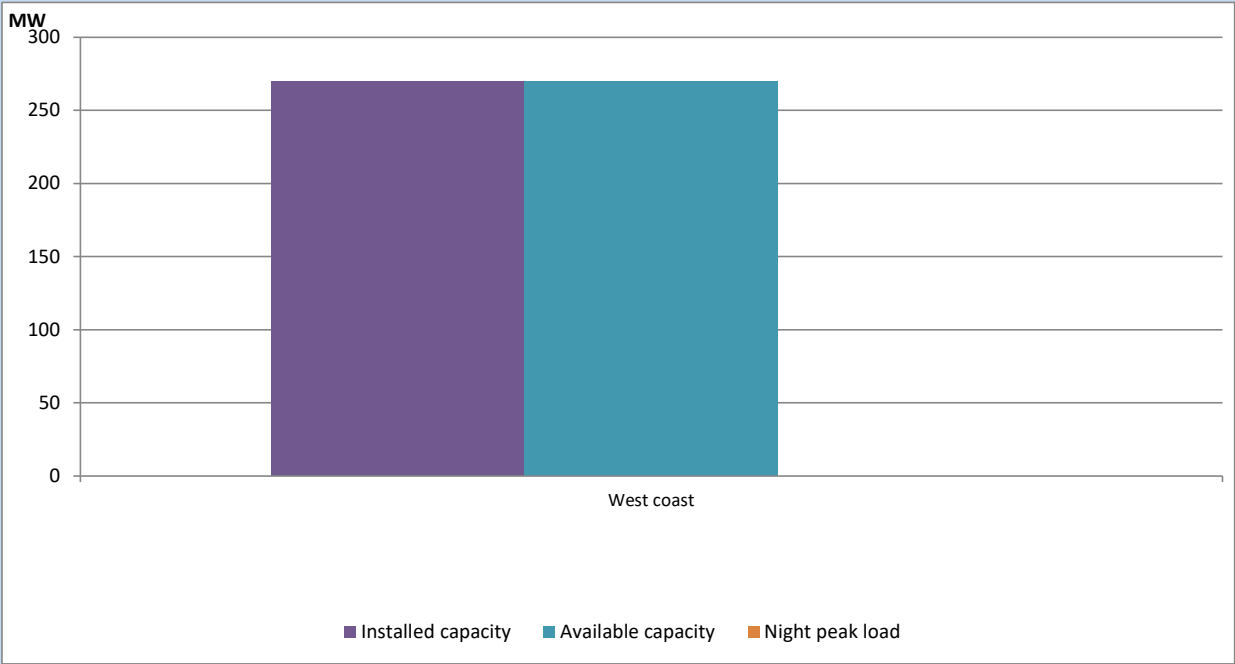
Asia Power, V Power Pallekale, Vpower Galle, V Power Horana, Vpower Hambantota, Vpower Valachchena and Altaqa Mahiyanganaya, Sojitz kelanitissa are not available due to expiration of PPAs



Available Generation is estimated based on plant availability at 6.00am on

January 18, 2023

IPP owned Thermal Plant Loading at the Night Peak

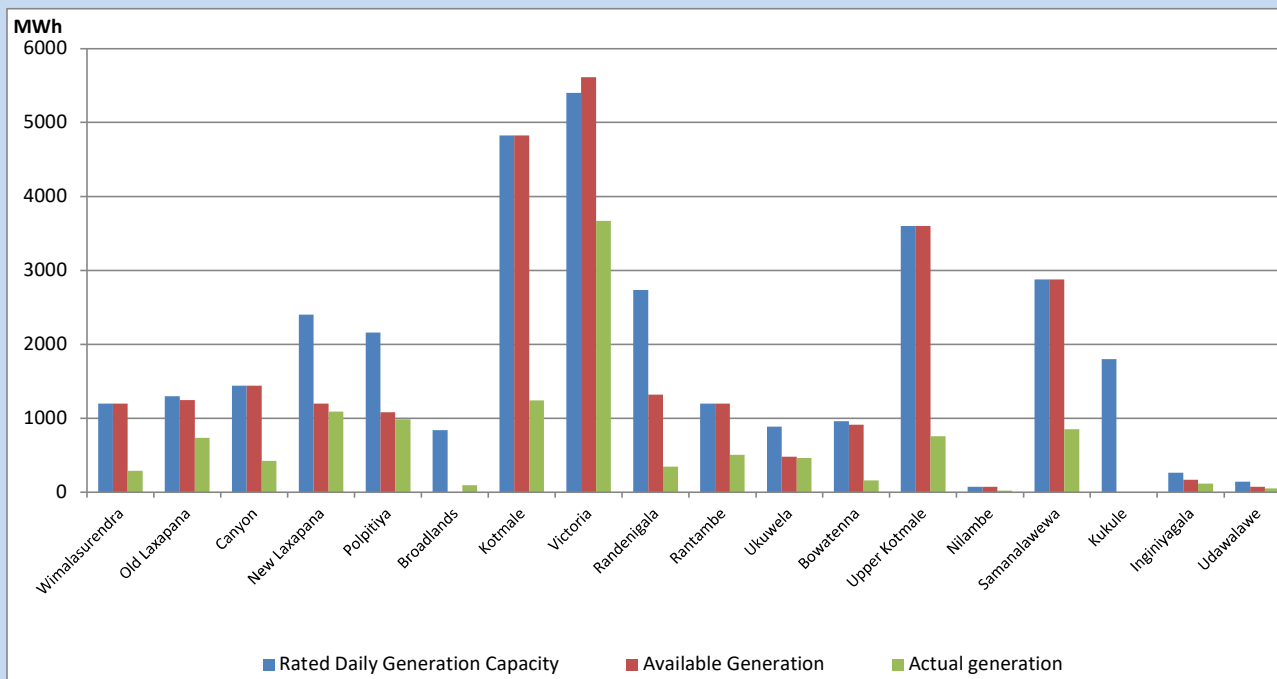


Note- Plant availability is recorded at 6.00 am on

January 18, 2023

Major Hydro Plant Dispatch

January 17, 2023

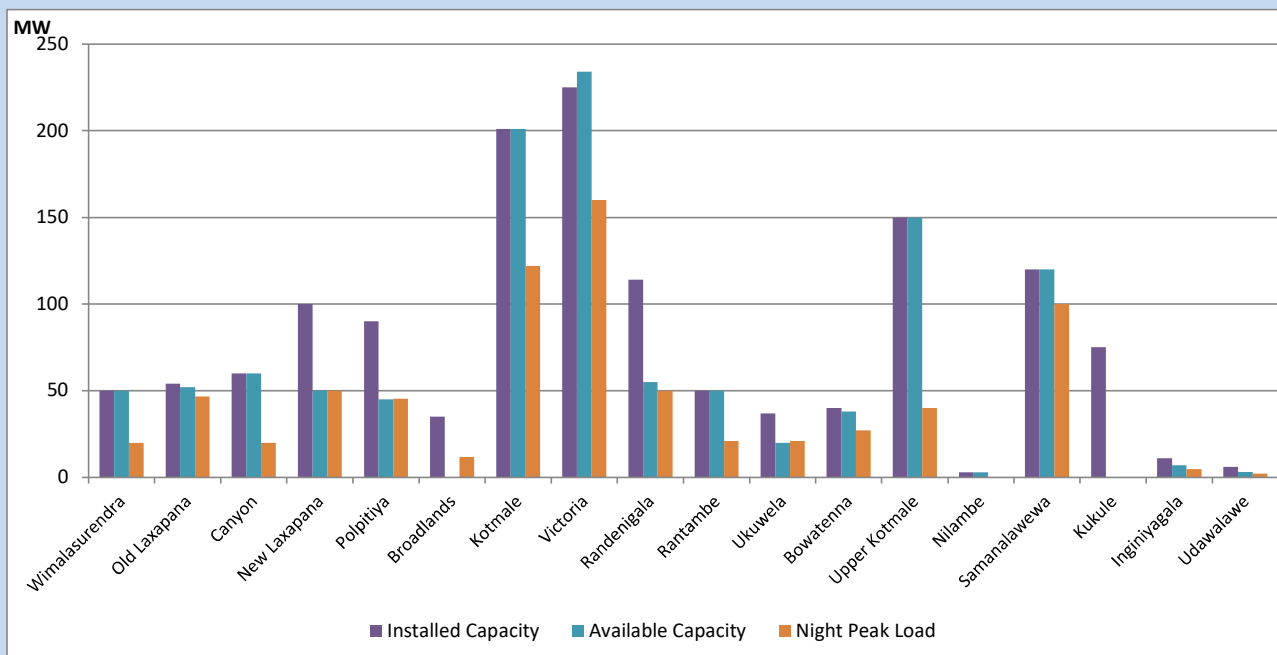


Available Generation is estimated based on plant availability at 6.00am on
Broadlands power plant is operating in the Commissioning Stage

January 18, 2023

Major Hydro Plant Loading at Night Peak

January 17, 2023



Note- Plant availability is recorded at 6.00 am on
Broadlands power plant is operating in the Commissioning Stage

January 18, 2023

Summary of Major Plant performance

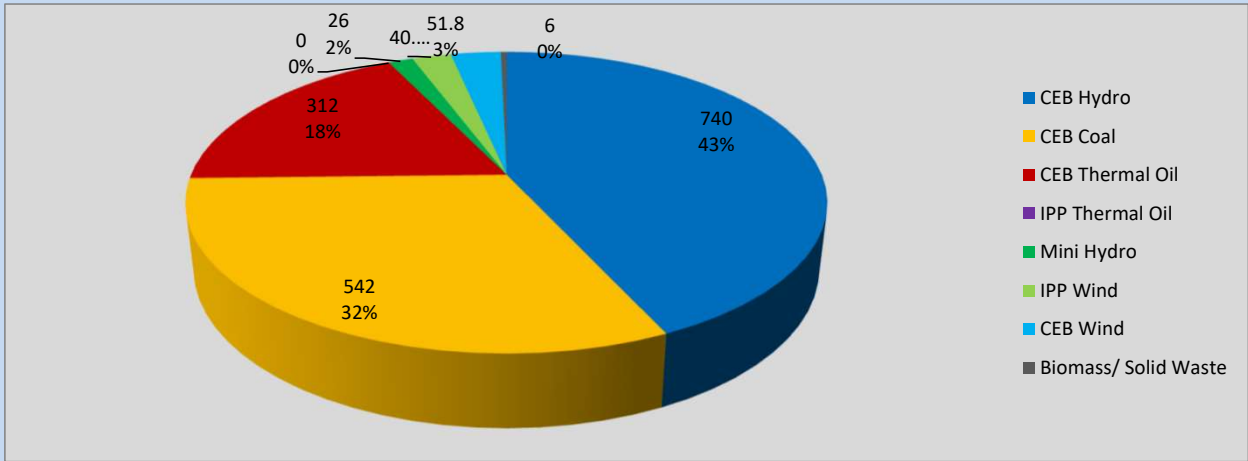
Plant	Installed Capacity	Plant Availability	Night peak Load	Plant Dispatch
	(MW)	(MW)	(MW)	(MWh)
Wimalasurendra	50	50	20	289
Old Laxapana	54	52	47	734
Canyon	60	60	20	423
New Laxapana	100	50	50	1,087
Polpitiya	90	45	45	987
Broadlands	35	0	12	93
Kotmale	201	201	122	1,240
Victoria	225	234	160	3,667
Randenigala	114	55	50	345
Rantambe	50	50	21	507
Ukuwela	37	20	21	460
Bowatenna	40	38	27	161
Upper Kotmale	150	150	40	756
Nilambe	3	3	0	21
Samanalawewa	120	120	100	854
Kukule	75	0	0	0
Inginiyagala	11	7	5	116
Udawalawe	6	3	2	49
Puttalam Coal I	270	0	0	0
Puttalam Coal II	270	270	271	6,479
Puttalam Coal III	270	270	271	6,494
KPS Small GTs	64	32	0	0
KPS GT 7	115	115	0	0
KCCP	161	158	151	3,862
Sapugaskanda A	70	32	34	1,060
Sapugaskanda B	70	63	54	1,329
Uthura Janani	26	23	16	127
Barge CEB	60	60	57	1,351
CEB-Thulhiriya	10	0	0	0
CEB-Kolonnawa	20	0	0	0
CEB-Mathugama	20	13	0	0
ACE Matara	24	0	0	0
Asia Power	50	0	0	0
Sojitz Kelanitissa	163	0	0	0
West Coast	270	270	0	2,177
Nothern Power	36	0	0	0
ACE Embilipitiya	93	0	0	0
Total	3,483	2,444	1,719	37,136

Plant availability is the availability recorded at 6 am on

January 18, 2023

Contribution to the Night Peak in MW

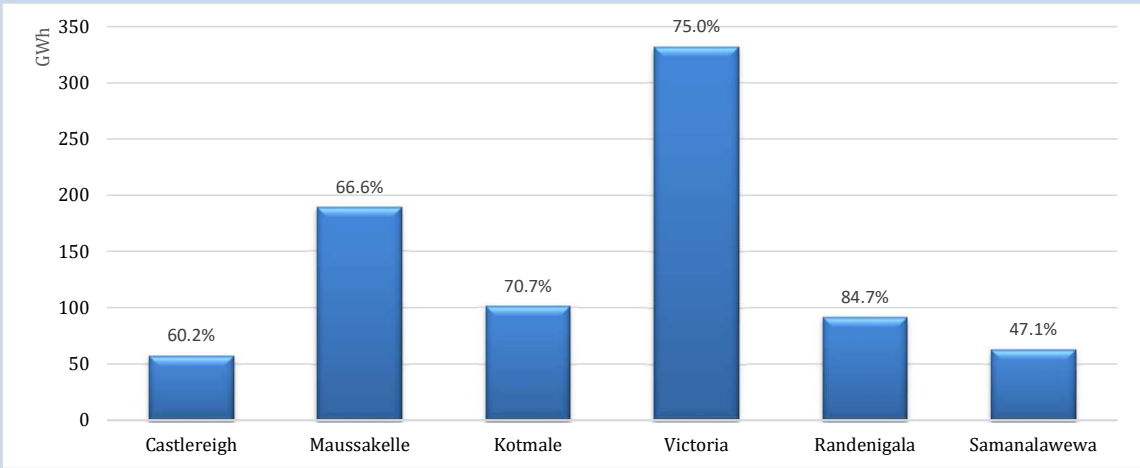
January 17, 2023



Night Peak*	1,718.0 MW
Day Peak	1,793.2 MW
Minimum Demand	1,055.2 MW

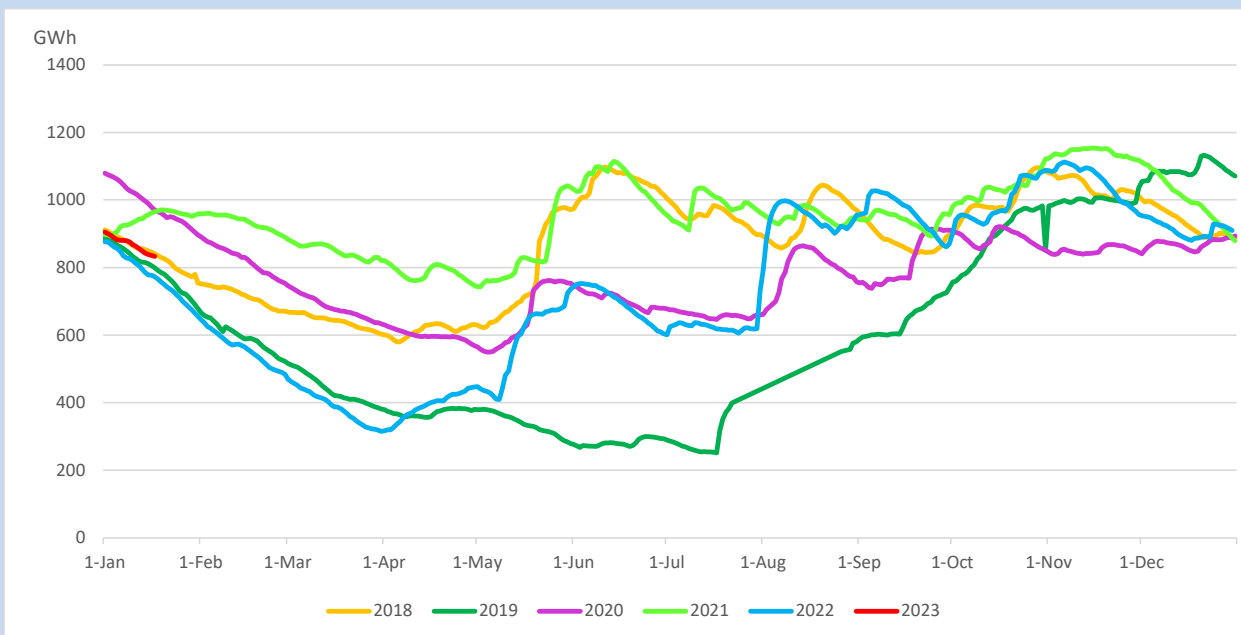
Above figures are excluding contribution from roof top solar, non telemetered solar and mini hydro plants

Reservoir Levels - as at 06.00 Hr on January 18, 2023

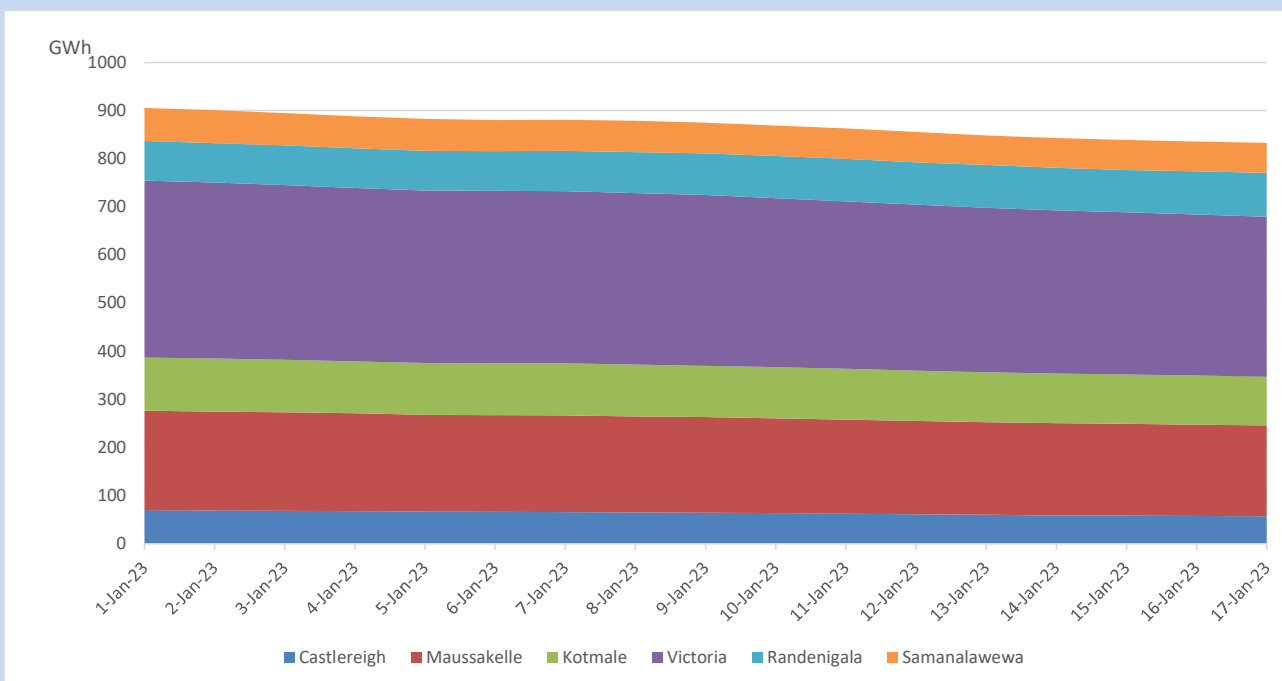


Total Reservoir Level	833 GWh
% of Total capacity	69.1%

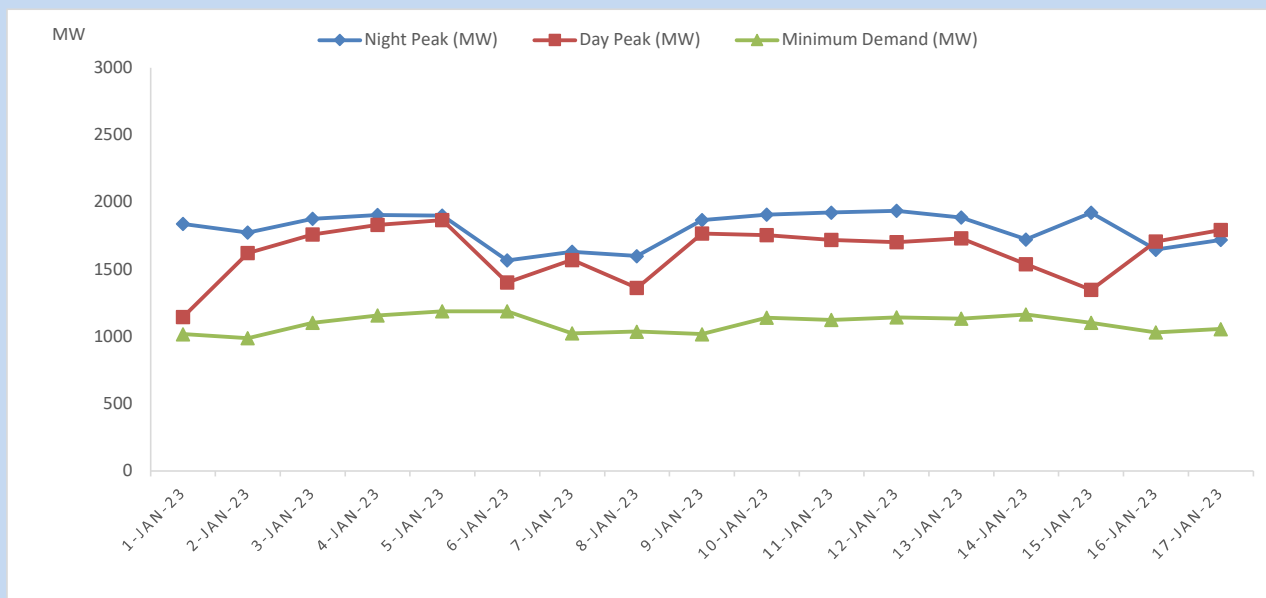
Comparison of Total Reservoir Storage Levels with Past Years



Variation of Major Hydro Reservoir Levels in the current year (GWh)



Variation of Demand during the current year

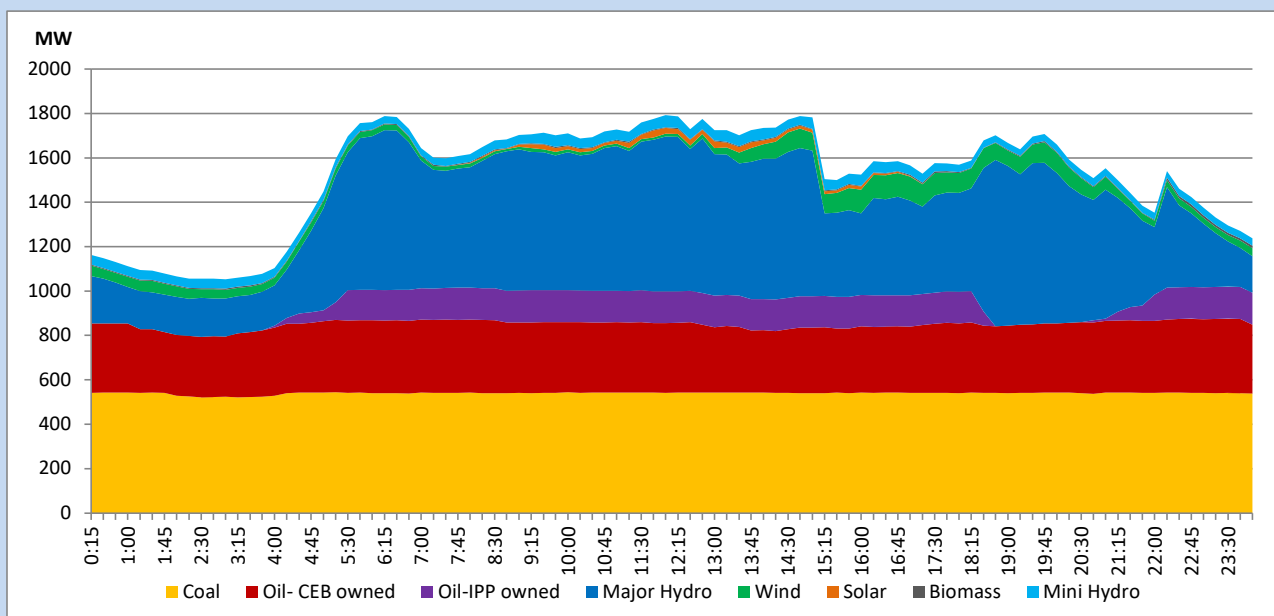


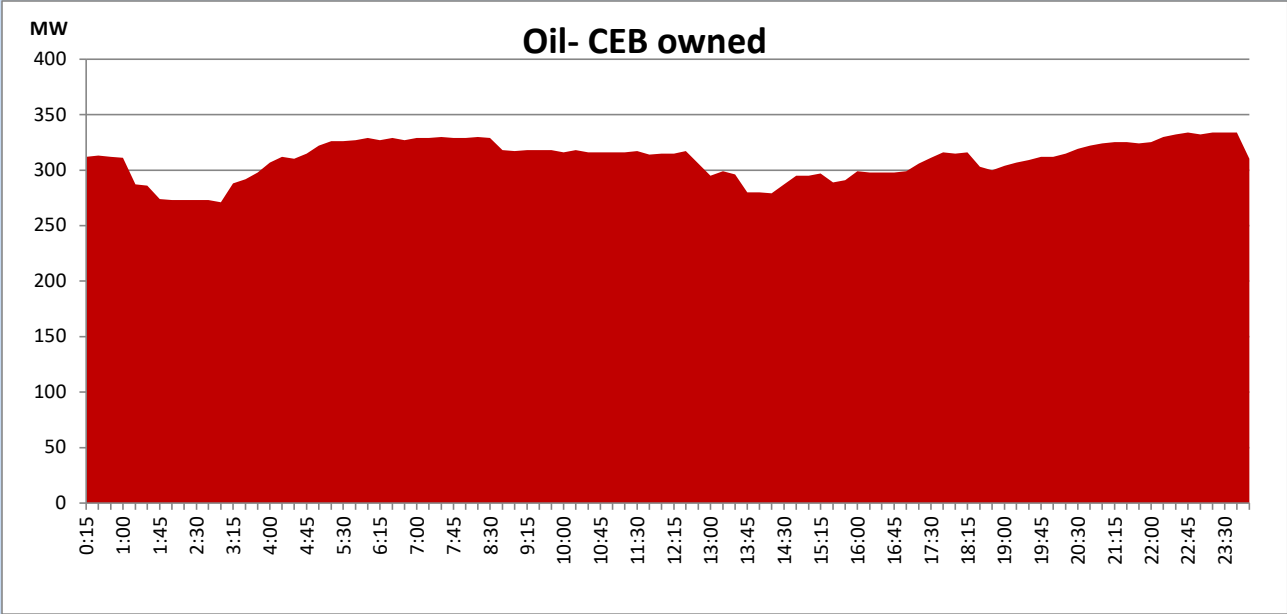
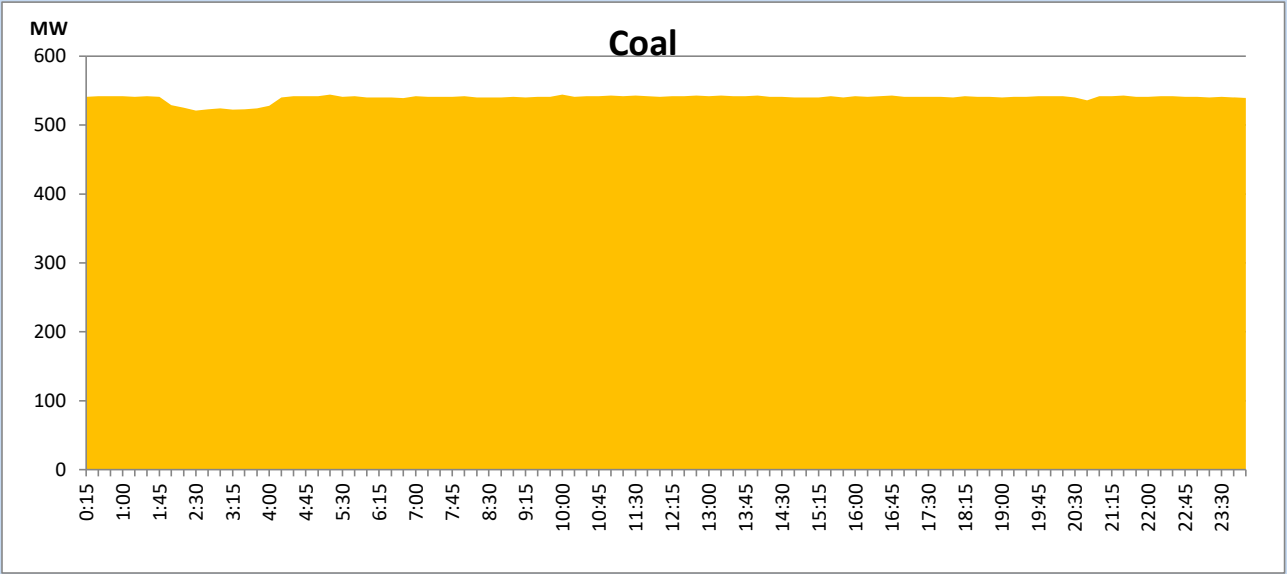
The above figures are excluding contribution from roof top solar, non telemetered solar and mini hydro plants

Daily Load Curve of the Previous day

January 16, 2023

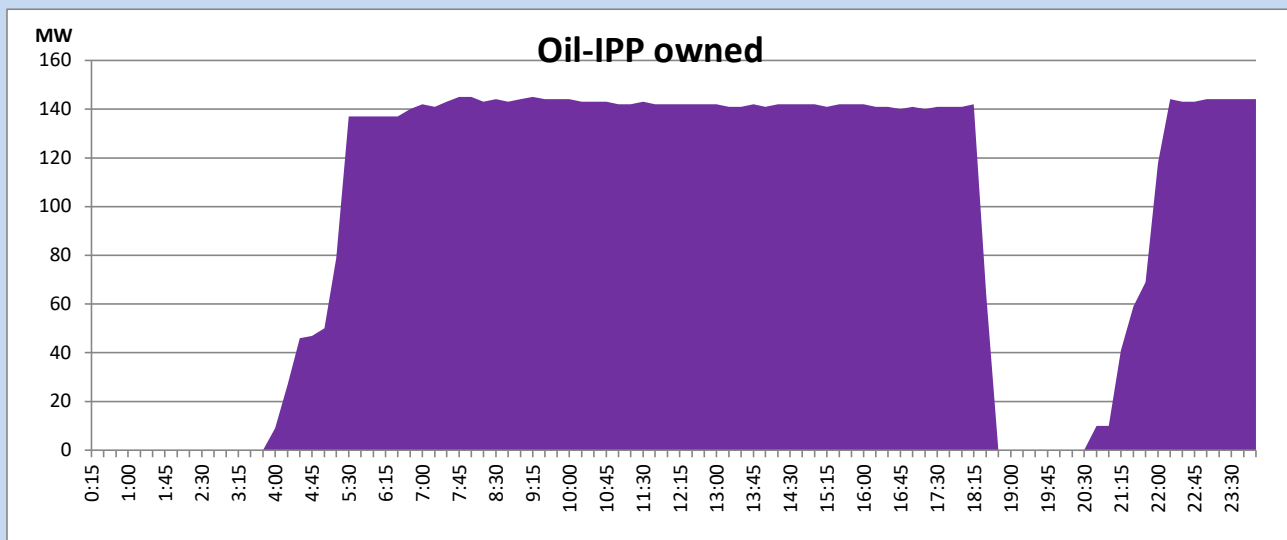
Solar and wind data is based on Telemetered Power Stations only





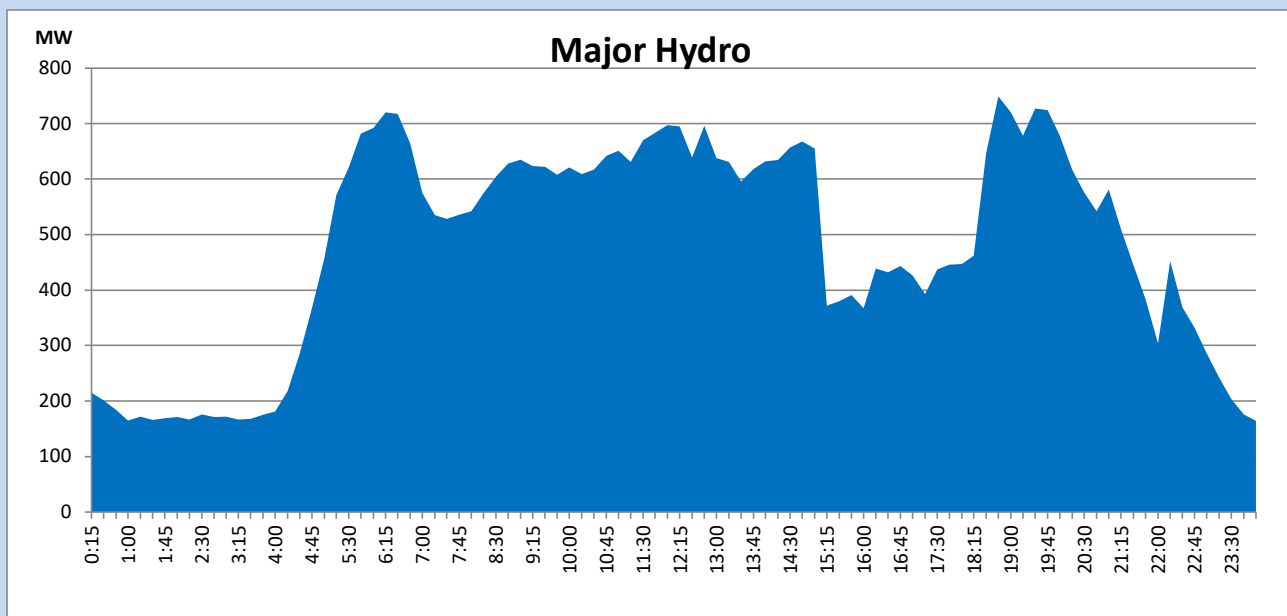
IPP Oil Plant Generation during the Previous day

January 16, 2023



Major Hydro Generation during the Previous day

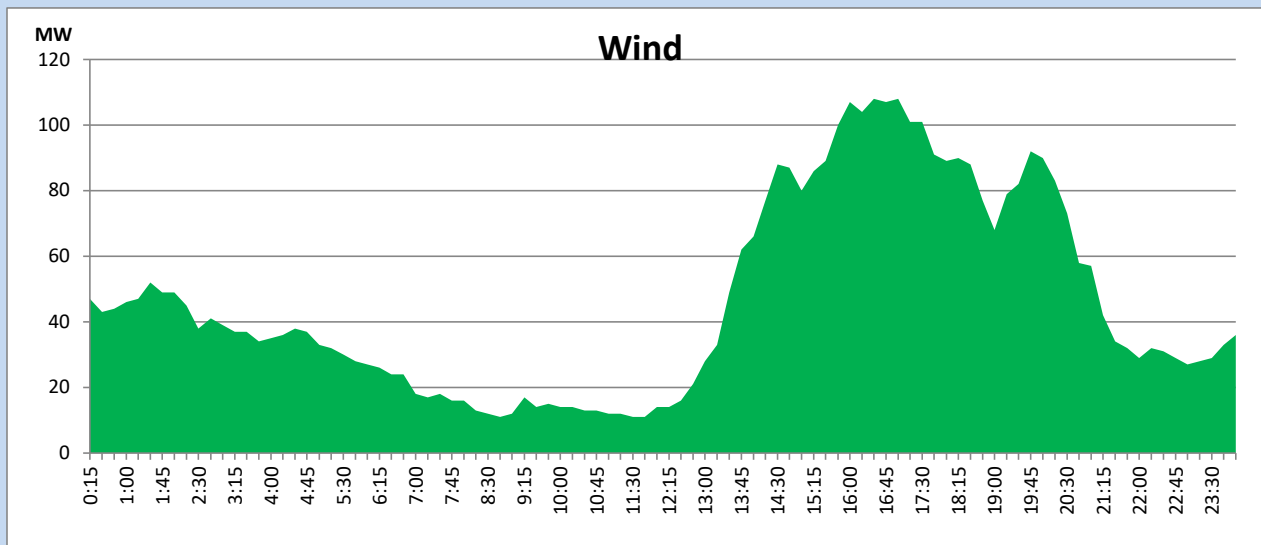
January 16, 2023



Wind Generation during the Previous day

January 16, 2023

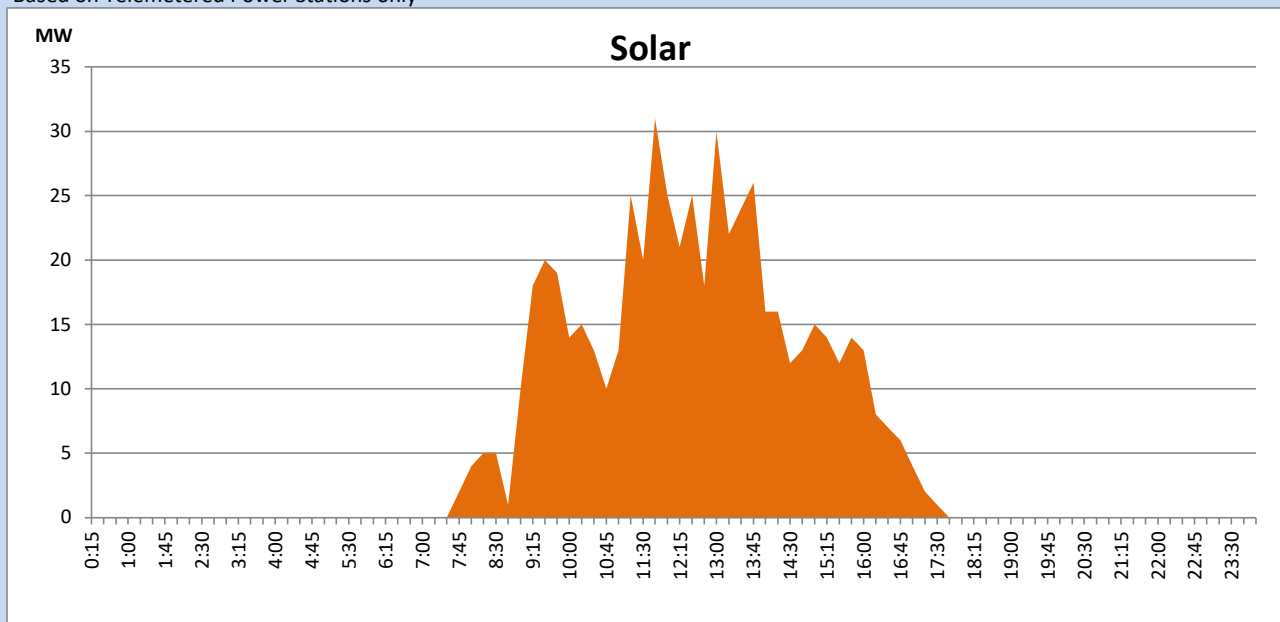
Based on Telemetered Power Stations only



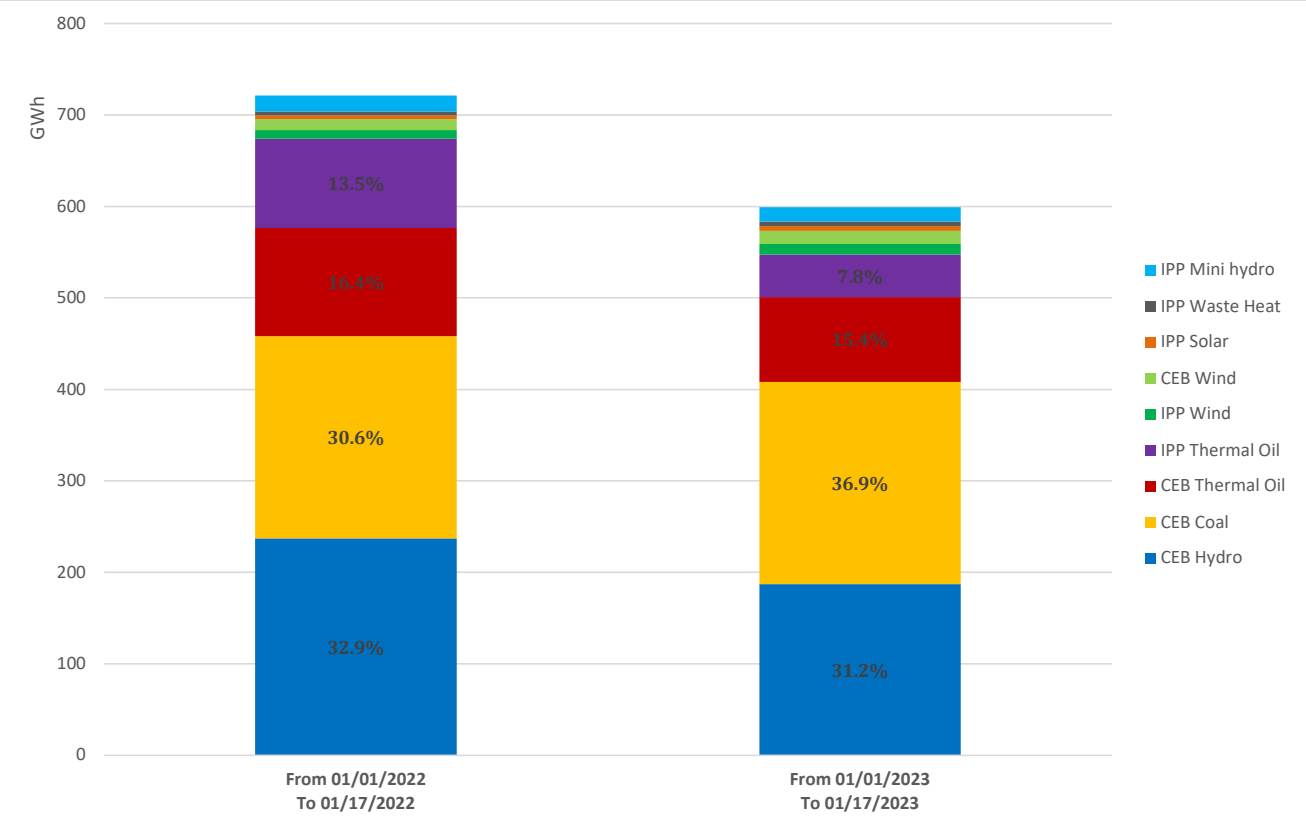
Solar Generation during the Previous day

January 16, 2023

Based on Telemetered Power Stations only



Cumulative Dispatch Comparison with Last Year



Thermal Plant Fuel types

Power Station	Primary Fuel
CEB Thermal	
Sapugaskanda 1	Heavy Fuel
Sapugaskanda 2	Heavy Fuel
Kelanitissa Small Gas Turbines	Auto Diesel
GT 7 - Kelanitissa	Auto Diesel
Kelanitissa CCY	Naphtha or Diesel
Lakvijaya 1	Coal
Lakvijaya 2	Coal
Lakvijaya 3	Coal
Uthuru Janani	Heavy Fuel
Barge CEB	Heavy Fuel

Power Station	Primary Fuel
Private Thermal	
West Coast	Auto Diesel / Heavy Fuel

Major Incidents reported during the day

January 17, 2023

- 1) Rotational manual load shedding was carried out from 15:00hrs to 22:00hrs.
- 2) Habarana-Ukuwela cct tripped and A/R at 12:18 hrs from Habarana end and tripped from Ukuwela end due to operation of distance protection causing Ragala, Pallekelle & Ukuwela (132k/V B/B-01) to be dead (Ukuwela-Naula cct was released for maintenance). All affected equipment and
- 3) WCP ST Tripped at 18:17 hrs rejecting 48MW and subsequently WCP GT tripped at 18:32 hrs rejecting 65MW from the system, due to plant system failure.