

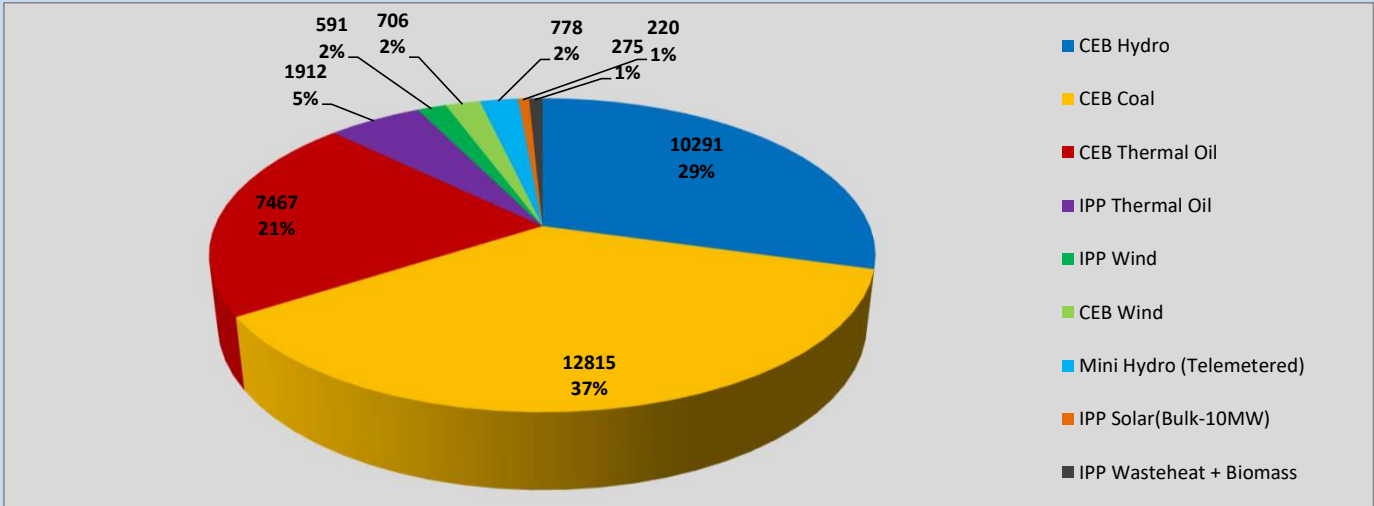
# **Generation and Reservoirs Statistics**

**January 16, 2023**



**PUBLIC UTILITIES COMMISSION OF SRI LANKA**

Daily Generation Mix in MWh



Total Generation (Excluding estimated figures) = 35,050 MWh

Estimated figures of CEB generation report

- Estimated unserved energy = 2.06 GWh
- Estimated Mini Hydro (Non telemetered) = 1742 MWh
- Estimated IPP Solar PV (Bulk 1-10MW) = 304MWh
- Estimated Solar Roof Top PV = 1480 MWh

Cumulative Dispatch

Following data excludes the contribution from roof top solar, non telemetered solar and mini hydro plants

For Current Month

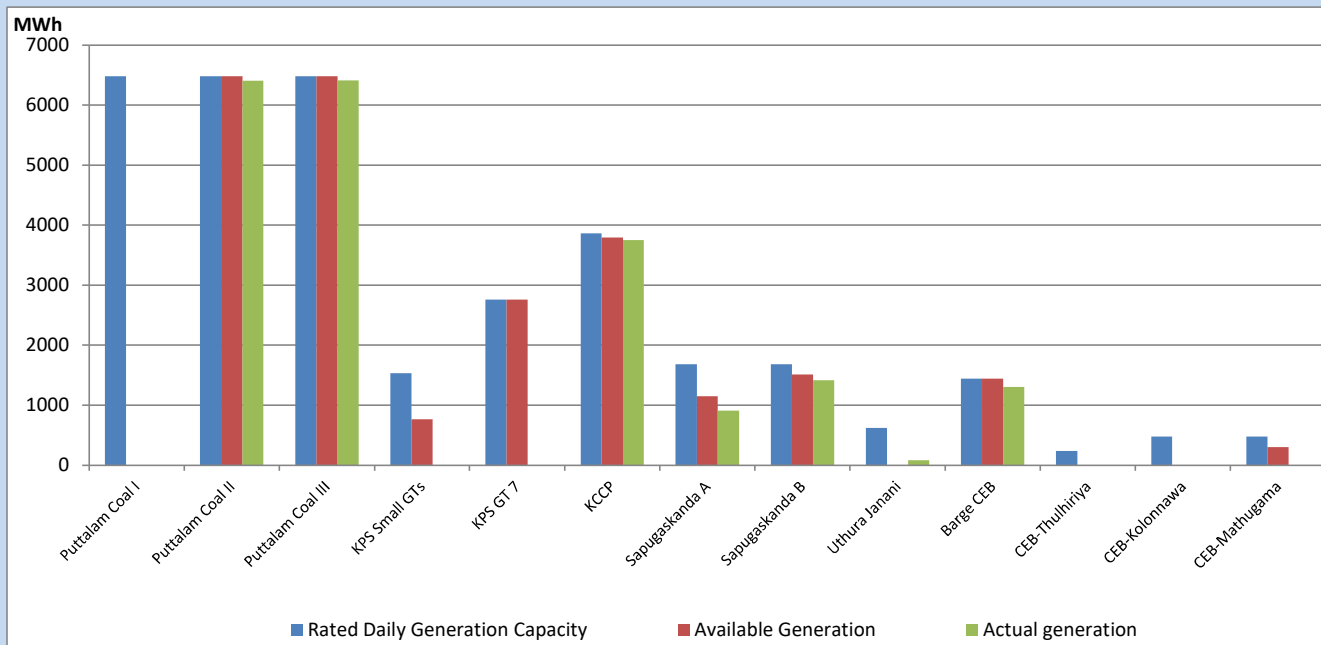
Category	Dispatch (GWh)	
CEB Hydro	175	31.20%
CEB Coal	208	37.07%
CEB Thermal Oil	85	15.07%
IPP Thermal	45	7.92%
SPP Wind	11	1.91%
CEB Wind	14	2.49%
Mini Hydro (Telemetered)	15	2.63%
IPP Solar(Bulk-10MW)	5	0.86%
IPP Wasteheat + BMP	5	0.86%
Total	562	

For Current Year

Category	Dispatch (GWh)	
CEB Hydro	175	31.20%
CEB Coal	208	37.07%
CEB Thermal Oil	85	15.07%
IPP Thermal	45	7.92%
SPP Wind	11	1.91%
CEB Wind	14	2.49%
Mini Hydro (Telemetered)	15	2.63%
IPP Solar(Bulk-10MW)	5	0.86%
IPP Wasteheat	5	0.86%
Total	562	

## CEB owned Thermal Plant Dispatch

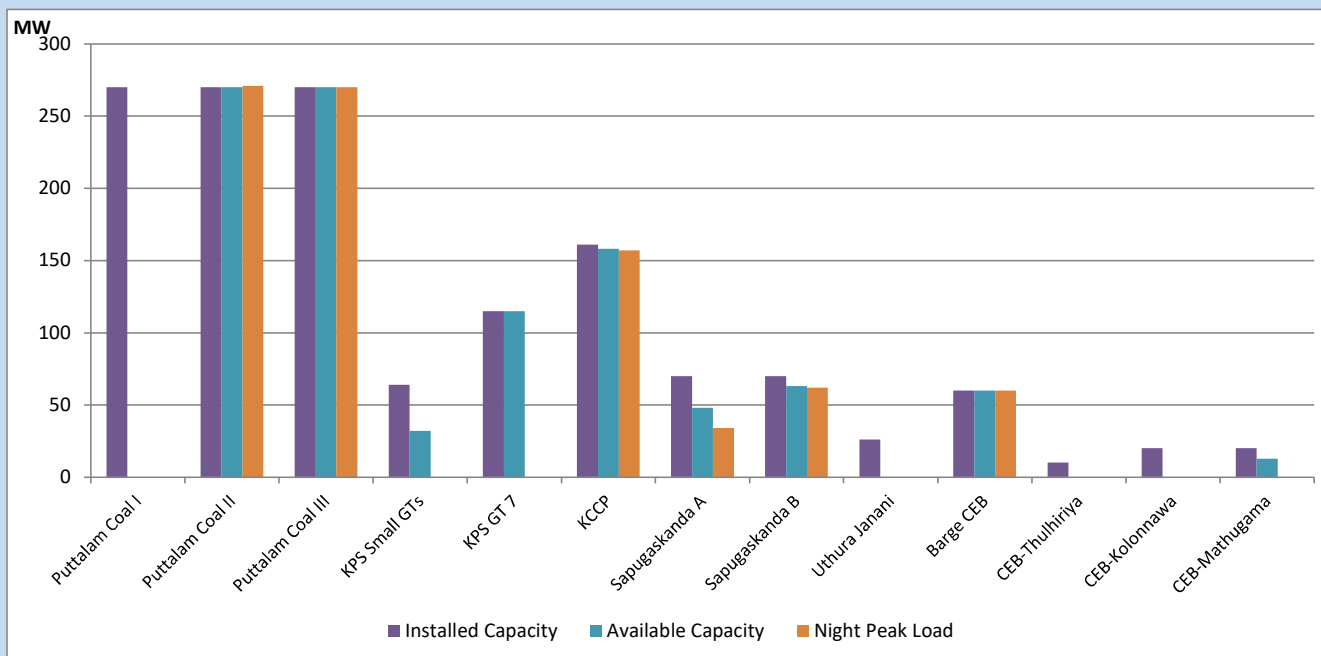
January 16, 2023



Available Generation is estimated based on plant availability at 6.00am on

January 17, 2023

## CEB owned Thermal Plant Loading at the Night Peak



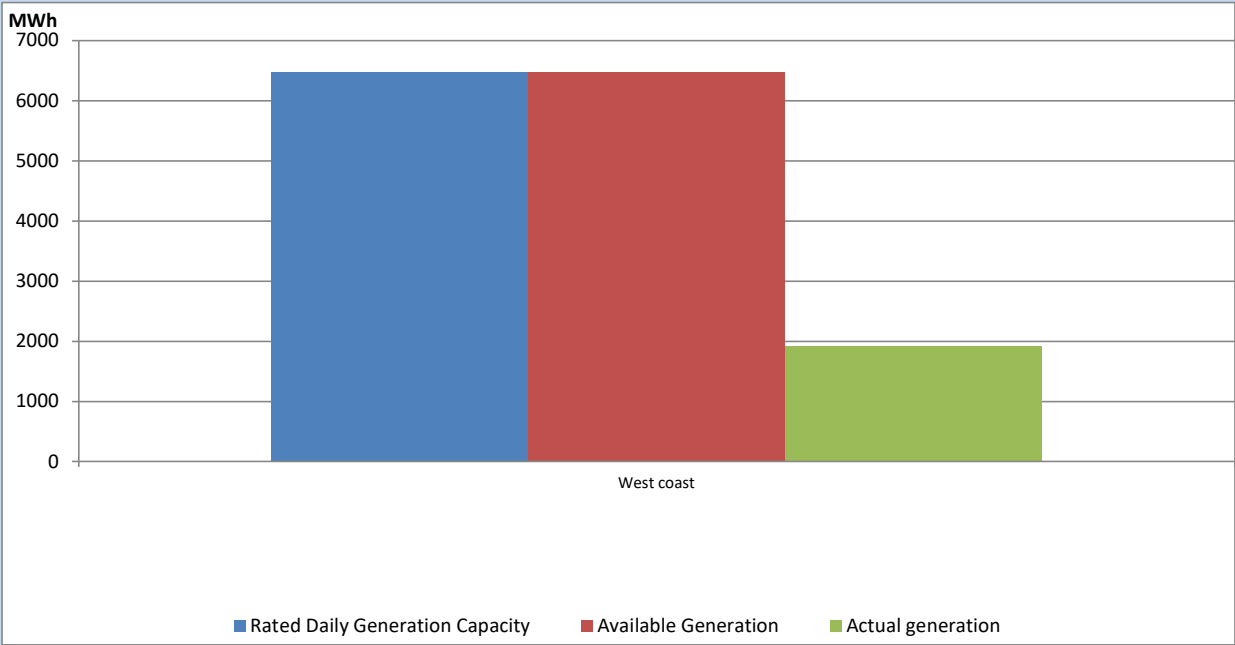
Note- Plant availability is recorded at 6.00 am on

January 17, 2023

IPP owned Thermal Plant Dispatch

January 16, 2023

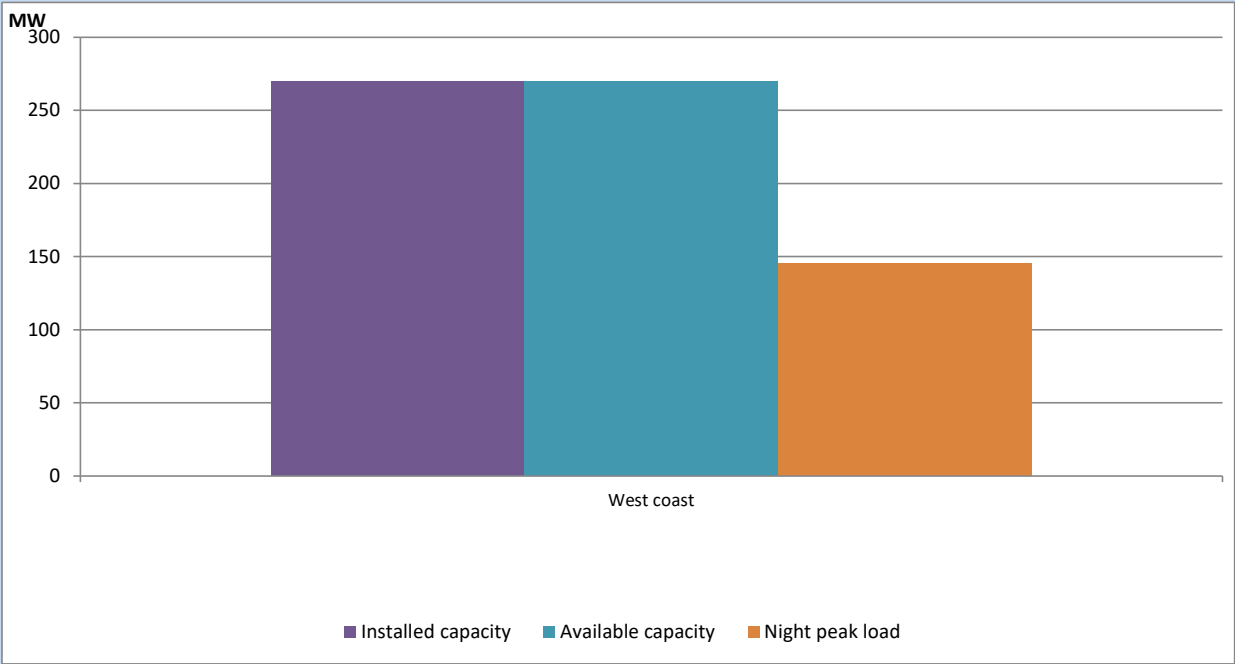
Asia Power, V Power Pallekale, Vpower Galle, V Power Horana, Vpower Hambantota, Vpower Valachchena and Altaqa Mahiyanganaya, Sojitz kelanitissa are not available due to expiration of PPAs



Available Generation is estimated based on plant availability at 6.00am on

January 17, 2023

IPP owned Thermal Plant Loading at the Night Peak

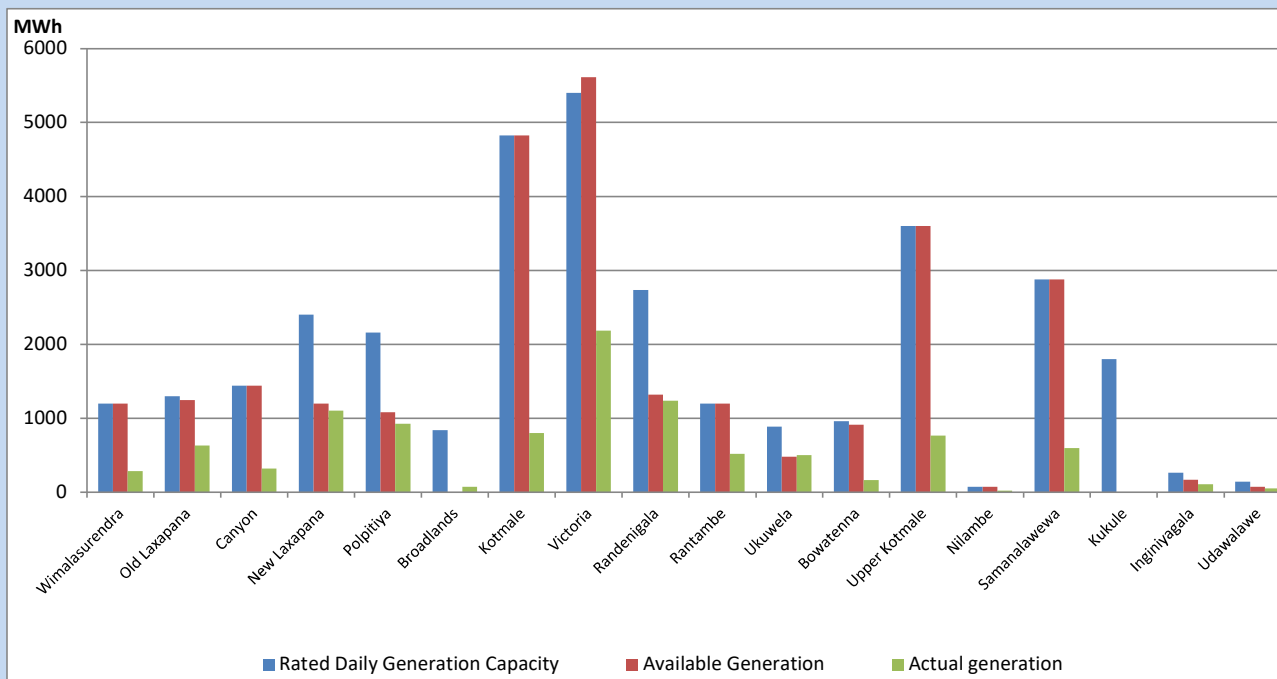


Note- Plant availability is recorded at 6.00 am on

January 0, 1900

## Major Hydro Plant Dispatch

January 16, 2023

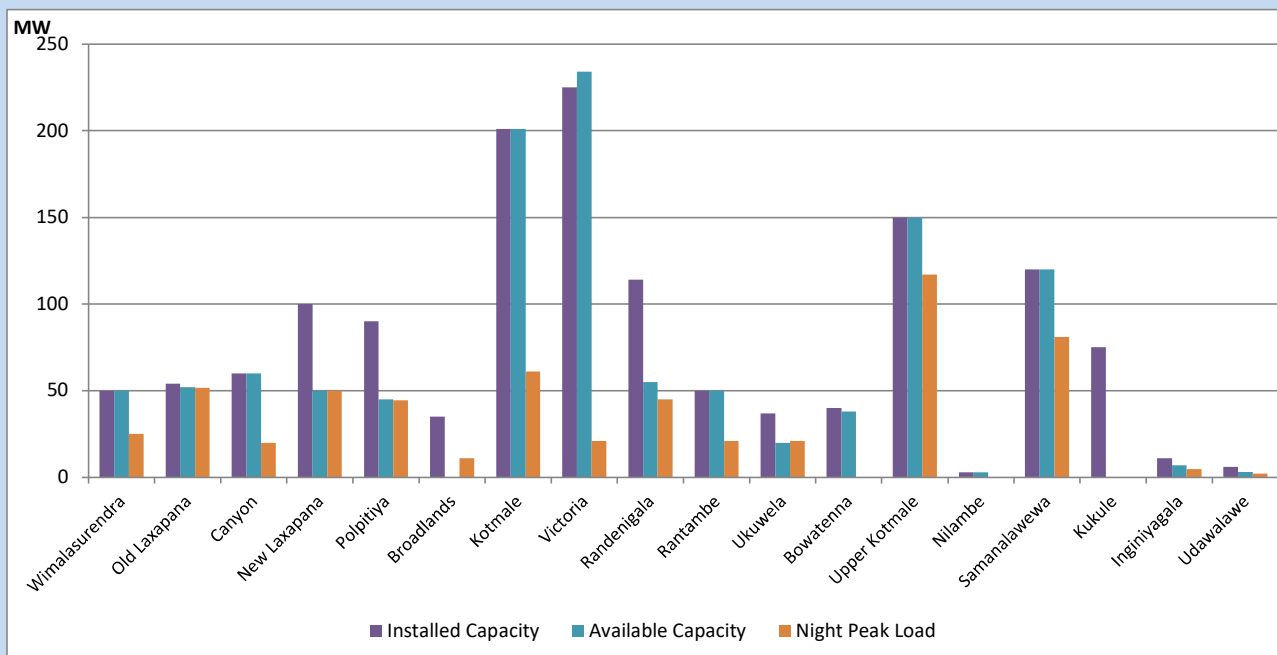


Available Generation is estimated based on plant availability at 6.00am on  
Broadlands power plant is operating in the Commissioning Stage

January 17, 2023

## Major Hydro Plant Loading at Night Peak

January 16, 2023



Note- Plant availability is recorded at 6.00 am on  
Broadlands power plant is operating in the Commissioning Stage

January 17, 2023

## Summary of Major Plant performance

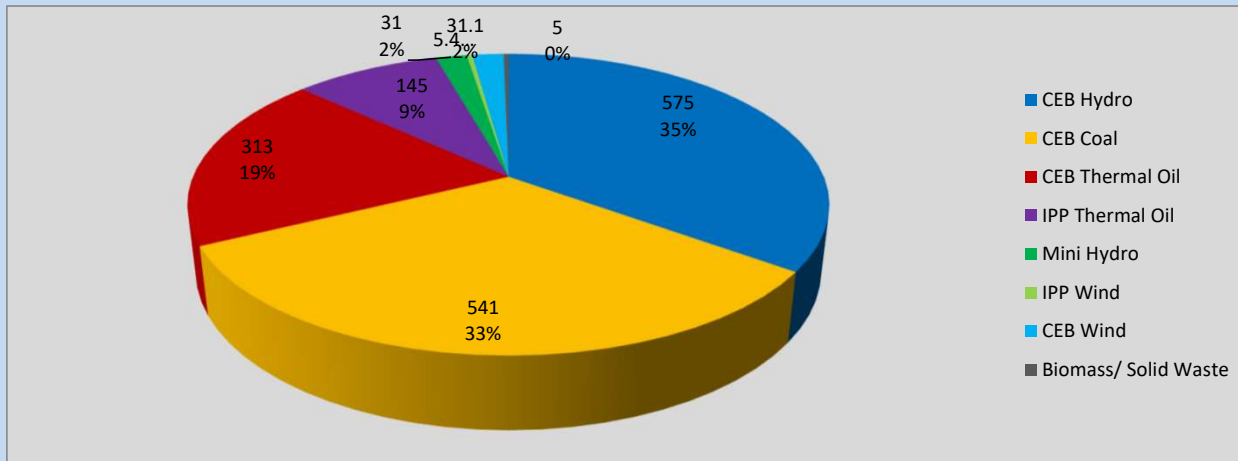
Plant	Installed Capacity	Plant Availability	Night peak Load	Plant Dispatch
	(MW)	(MW)	(MW)	(MWh)
Wimalasurendra	50	50	25	286
Old Laxapana	54	52	52	631
Canyon	60	60	20	319
New Laxapana	100	50	50	1,102
Polpitiya	90	45	44	927
Broadlands	35	0	11	75
Kotmale	201	201	61	800
Victoria	225	234	21	2,185
Randenigala	114	55	45	1,237
Rantambe	50	50	21	519
Ukuwela	37	20	21	501
Bowatenna	40	38	0	165
Upper Kotmale	150	150	117	767
Nilambe	3	3	0	22
Samanalawewa	120	120	81	598
Kukule	75	0	0	0
Inginiyagala	11	7	5	109
Udawalawe	6	3	2	48
Puttalam Coal I	270	0	0	0
Puttalam Coal II	270	270	271	6,405
Puttalam Coal III	270	270	270	6,410
KPS Small GTs	64	32	0	0
KPS GT 7	115	115	0	0
KCCP	161	158	157	3,754
Sapugaskanda A	70	48	34	910
Sapugaskanda B	70	63	62	1,418
Uthura Janani	26	0	0	80
Barge CEB	60	60	60	1,305
CEB-Thulhiriya	10	0	0	0
CEB-Kolonnawa	20	0	0	0
CEB-Mathugama	20	13	0	0
ACE Matara	24	0	0	0
Asia Power	50	0	0	0
Sojitz Kelanitissa	163	0	0	0
West Coast	270	270	145	1,912
Nothern Power	36	0	0	0
ACE Embilipitiya	93	0	0	0
Total	3,483	2,437	1,647	35,055

Plant availability is the availability recorded at 6 am on

January 17, 2023

## Contribution to the Night Peak in MW

January 16, 2023

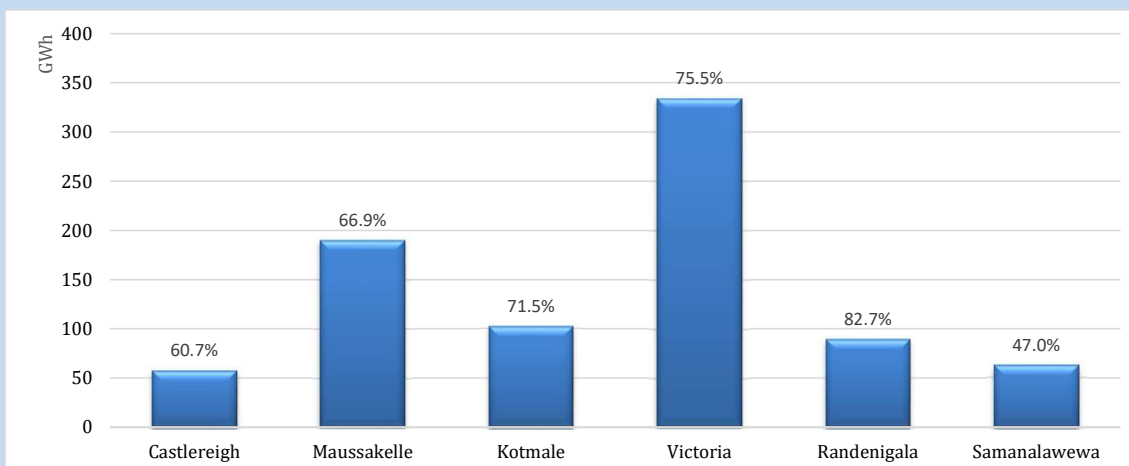


Night Peak*	1,645.9 MW
Day Peak	1,706.1 MW
Minimum Demand	1,030.2 MW

Above figures are excluding contribution from roof top solar, non telemetered solar and mini hydro plants

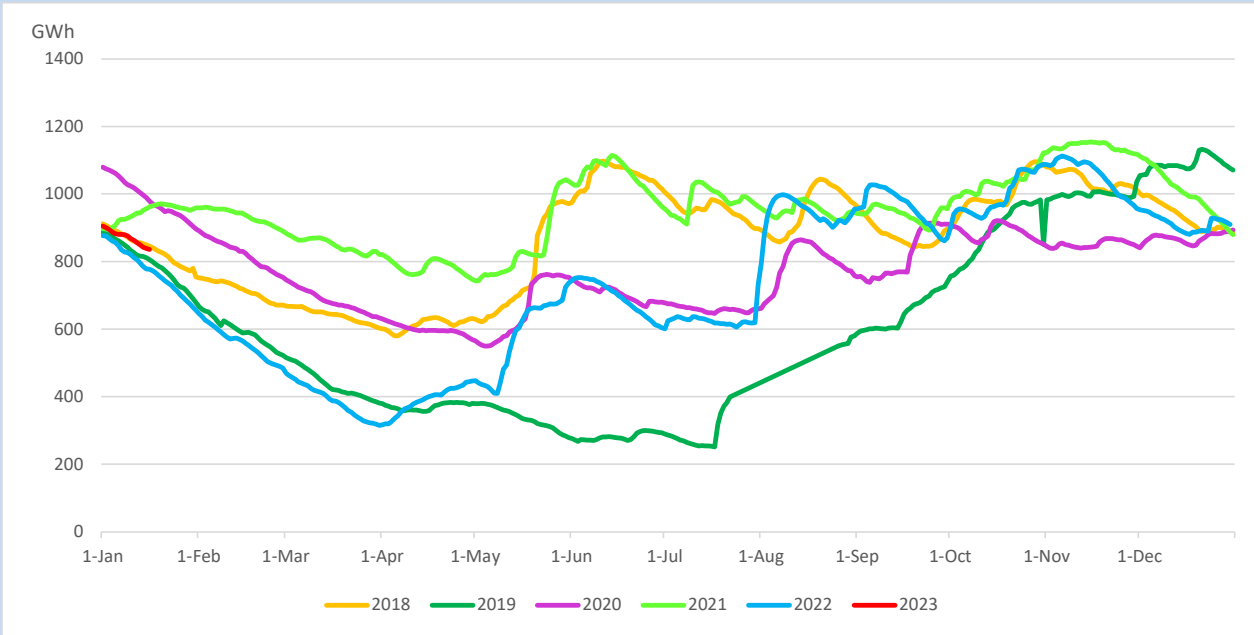
## Reservoir Levels -

as at 06.00 Hr on January 17, 2023

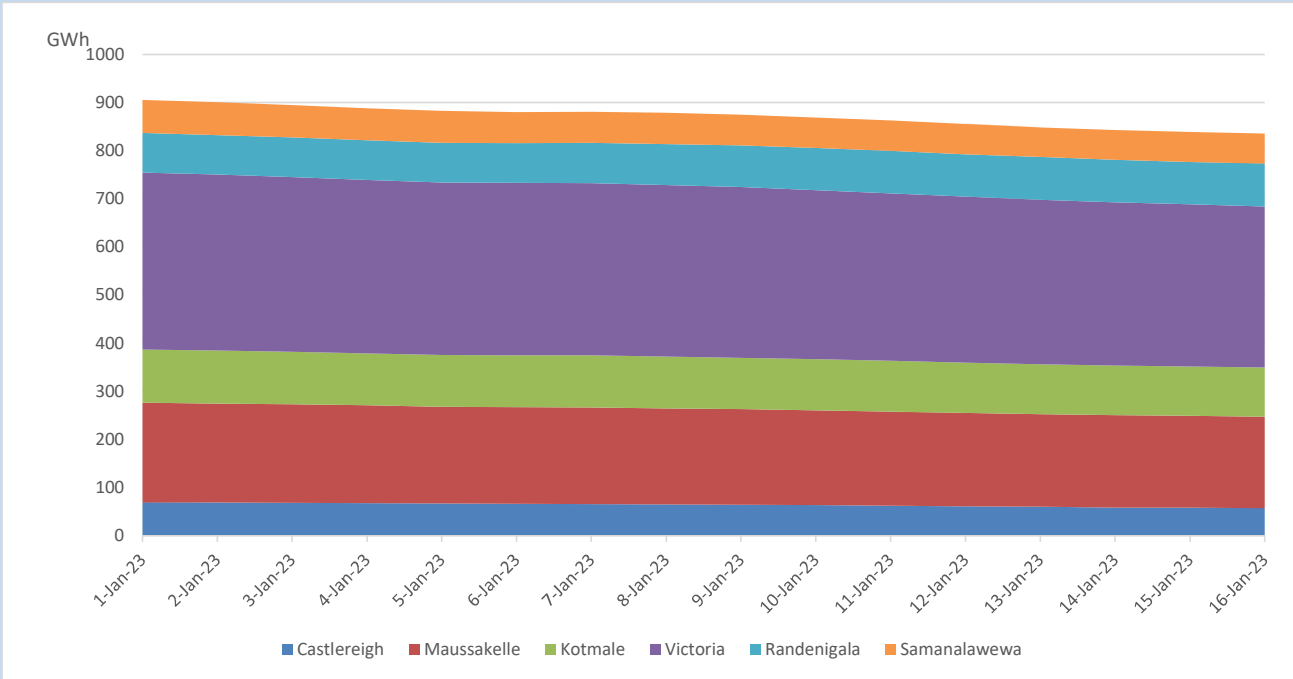


Total Reservoir Level	835.8 GWh
% of Total capacity	69.3%

Comparison of Total Reservoir Storage Levels with Past Years

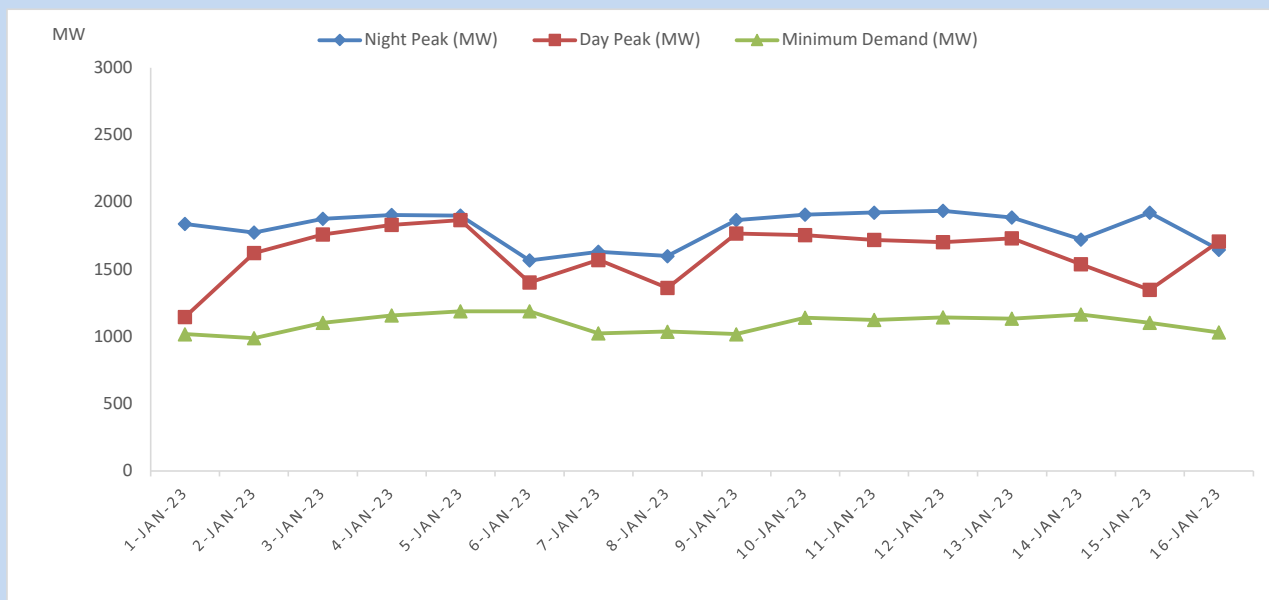


Variation of Major Hydro Reservoir Levels in the current year (GWh)





## Variation of Demand during the current year

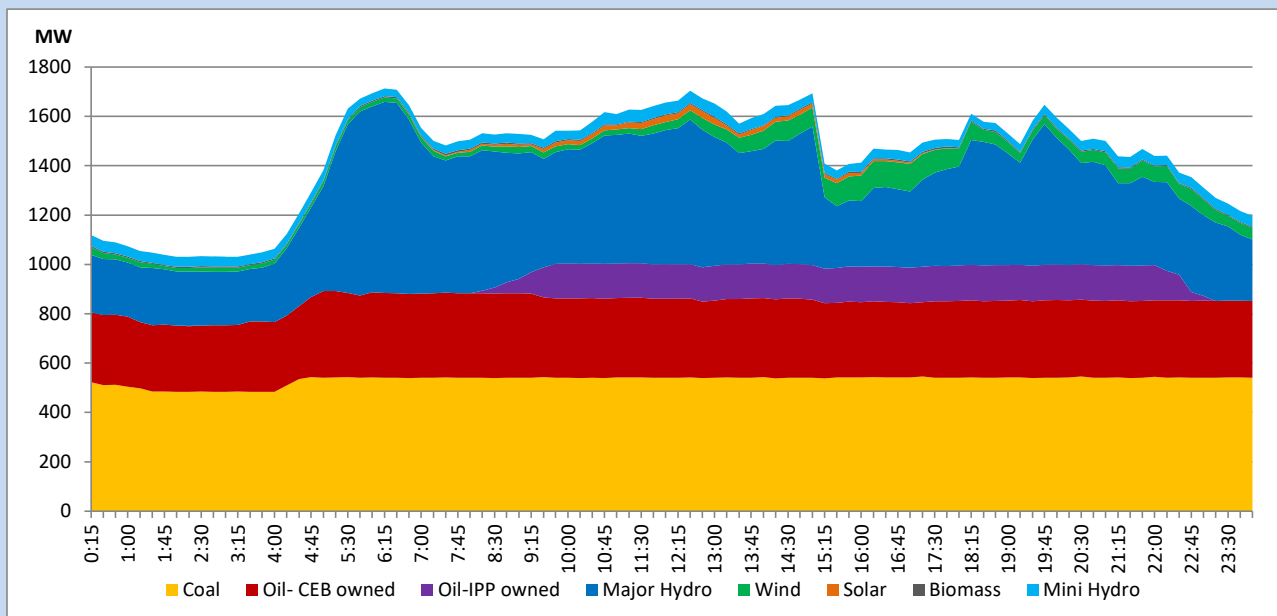


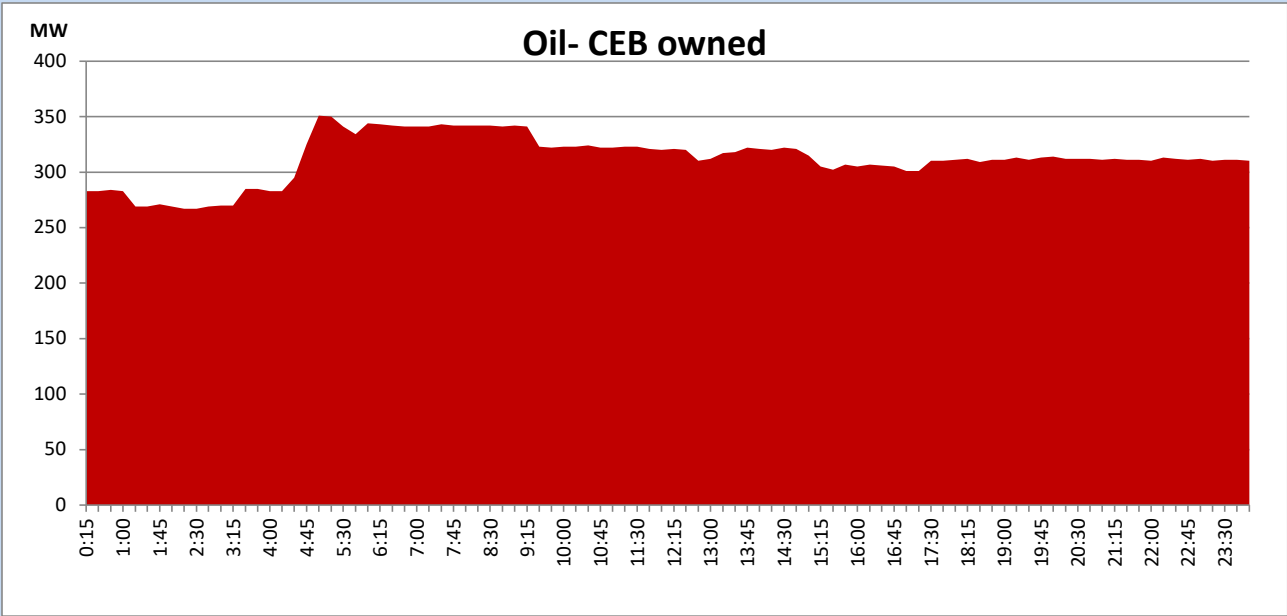
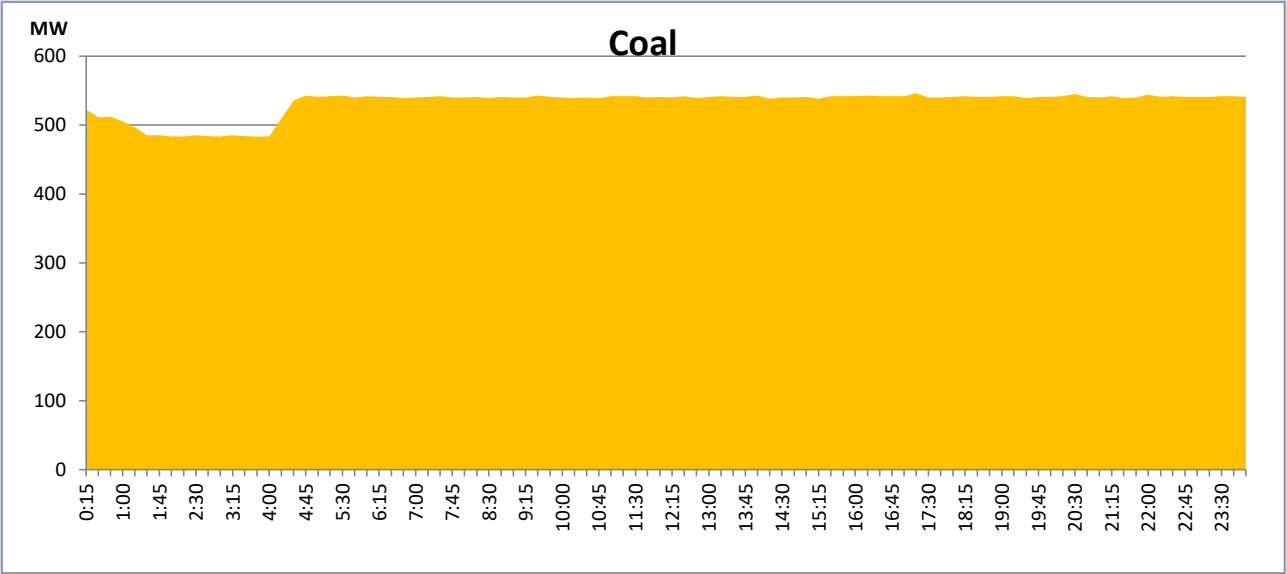
The above figures are excluding contribution from roof top solar, non telemetered solar and mini hydro plants

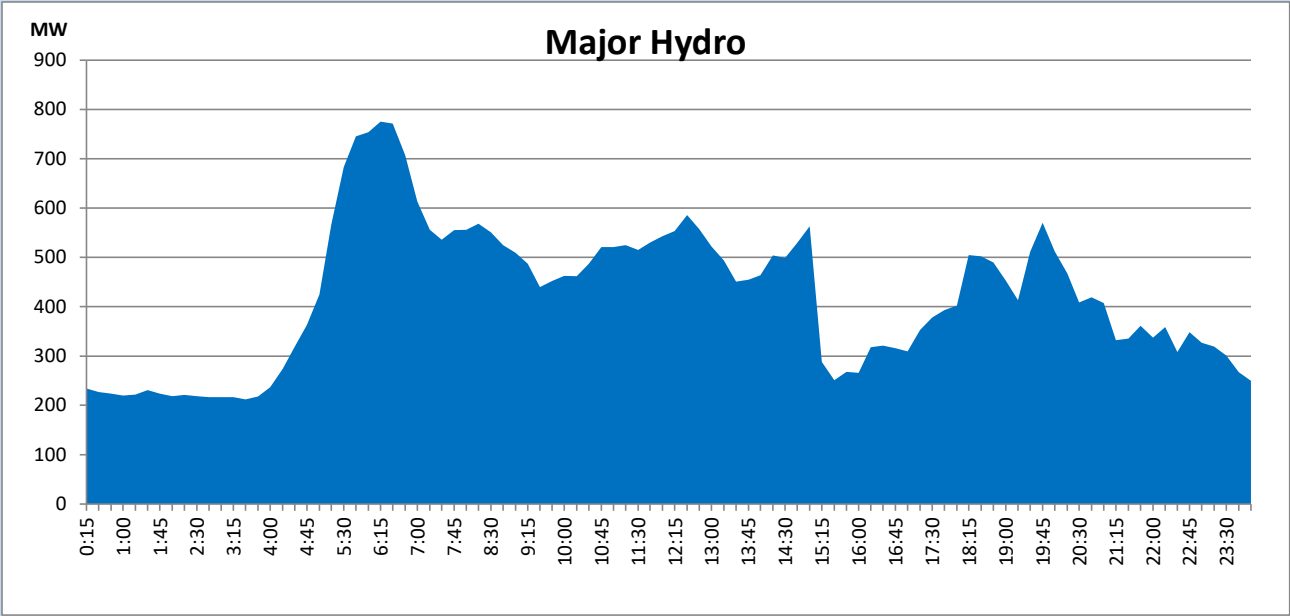
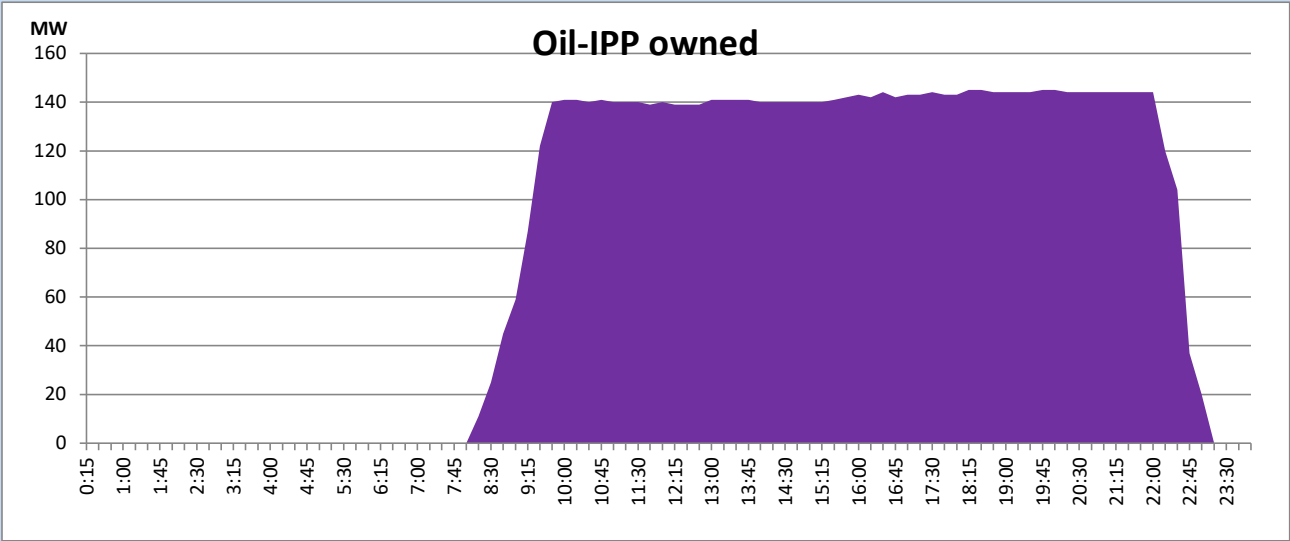
## Daily Load Curve of the Previous day

January 15, 2023

Solar and wind data is based on Telemetered Power Stations only



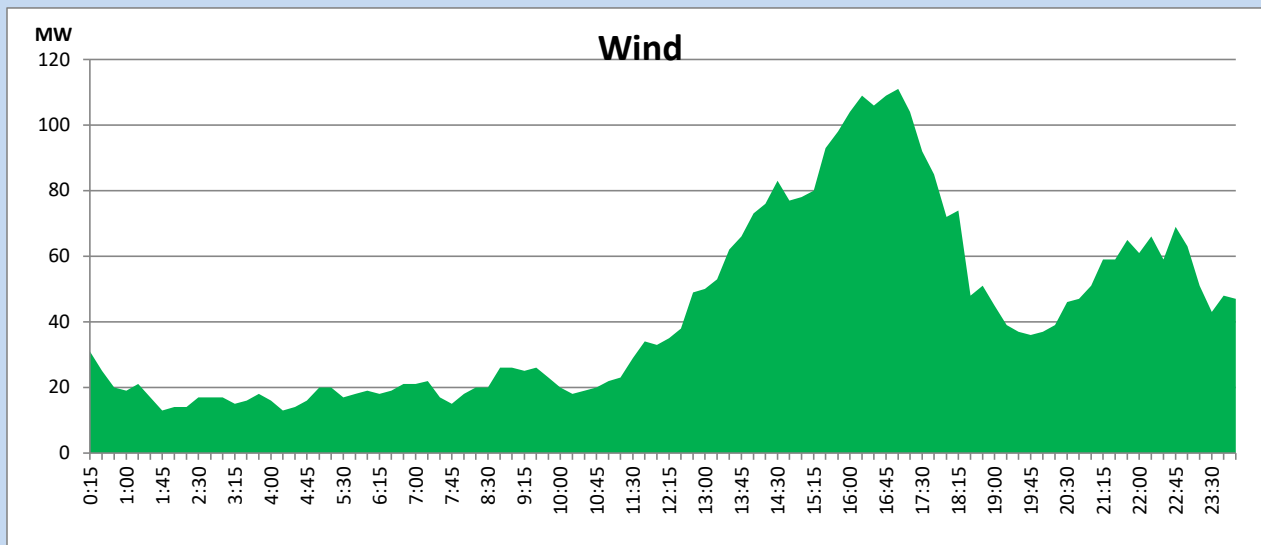




## Wind Generation during the Previous day

January 15, 2023

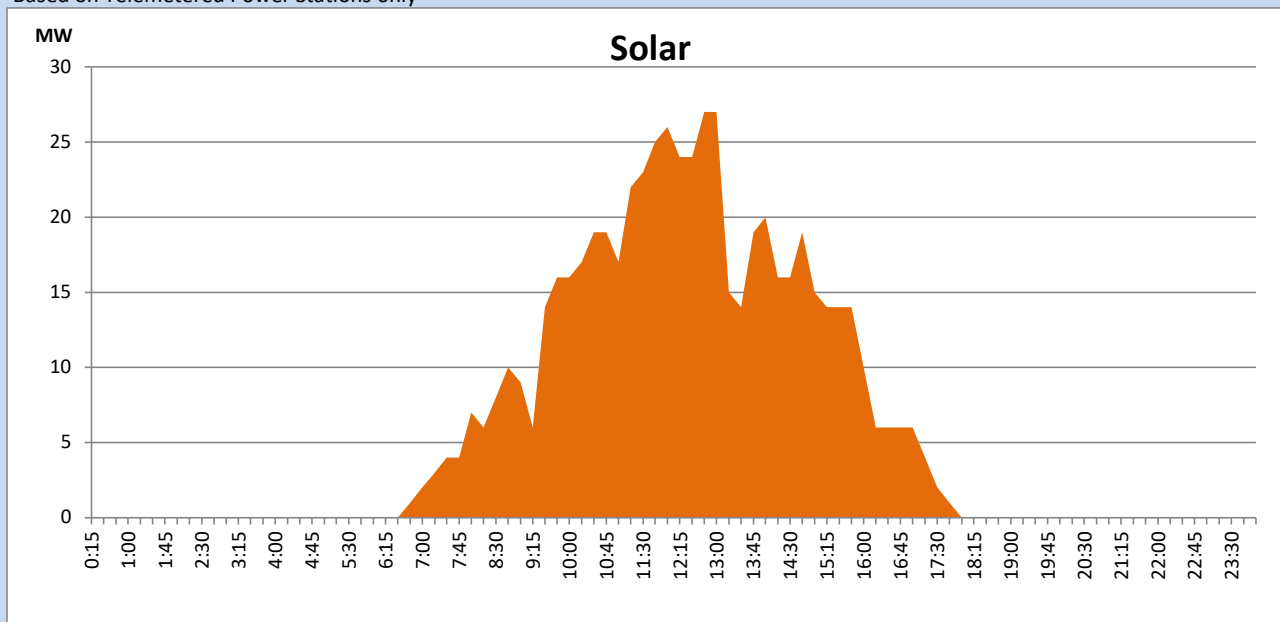
Based on Telemetered Power Stations only



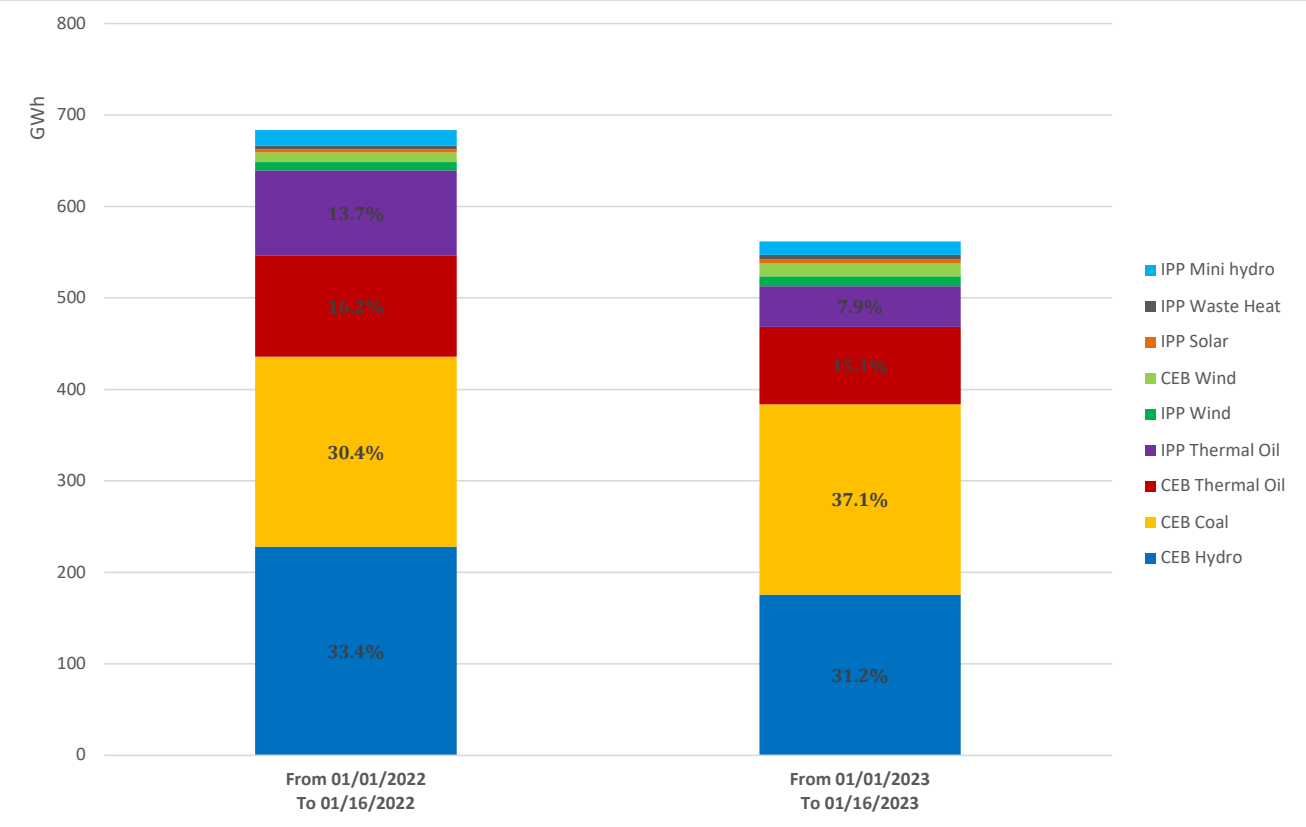
## Solar Generation during the Previous day

January 15, 2023

Based on Telemetered Power Stations only



# Cumulative Dispatch Comparison with Last Year



#### Thermal Plant Fuel types

Power Station	Primary Fuel
CEB Thermal	
Sapugaskanda 1	Heavy Fuel
Sapugaskanda 2	Heavy Fuel
Kelanitissa Small Gas Turbines	Auto Diesel
GT 7 - Kelanitissa	Auto Diesel
Kelanitissa CCY	Naphtha or Diesel
Lakvijaya 1	Coal
Lakvijaya 2	Coal
Lakvijaya 3	Coal
Uthuru Janani	Heavy Fuel
Barge CEB	Heavy Fuel

Power Station	Primary Fuel
Private Thermal	
West Coast	Auto Diesel / Heavy Fuel

#### Major Incidents reported during the day

January 16, 2023

- 1) Rotational manual load shedding was carried out from 15:00hrs to 22:00hrs.
- 2) New Habarana-New Anuradhapura 220kV cct 02 tripped from New Habarana end and tripped & A/R from New Anuradhapura end at 15:08hrs due to the operation of distance protection. The cct was normalized at 15:22hrs.
- 3) Padukka-New Polpitiya 220kV cct 01(which kept switched on from Padukka end only) A/R from Padukka end at 16:03hrs due to the operation of differential protection.