

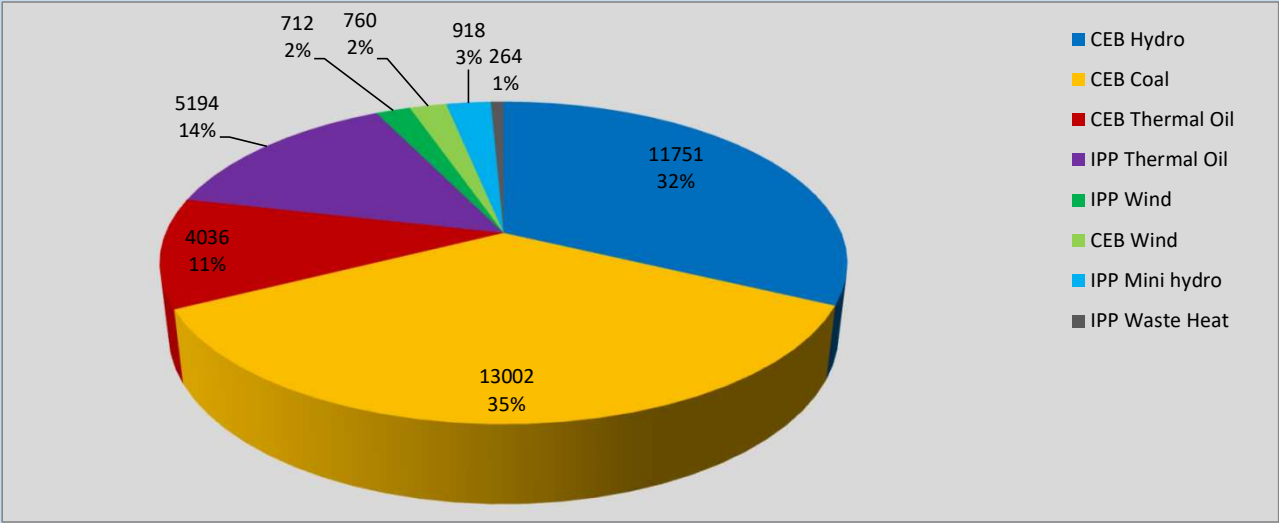
Generation and Reservoirs Statistics

January 3, 2023



PUBLIC UTILITIES COMMISSION OF SRI LANKA

Daily Generation Mix in MWh



Total Generation 36,990 MWh

Note: Excluding the contribution from Roof Top Solar, non telemetered Solar and certain Mini Hydro plants

Cumulative Dispatch

For Current Month

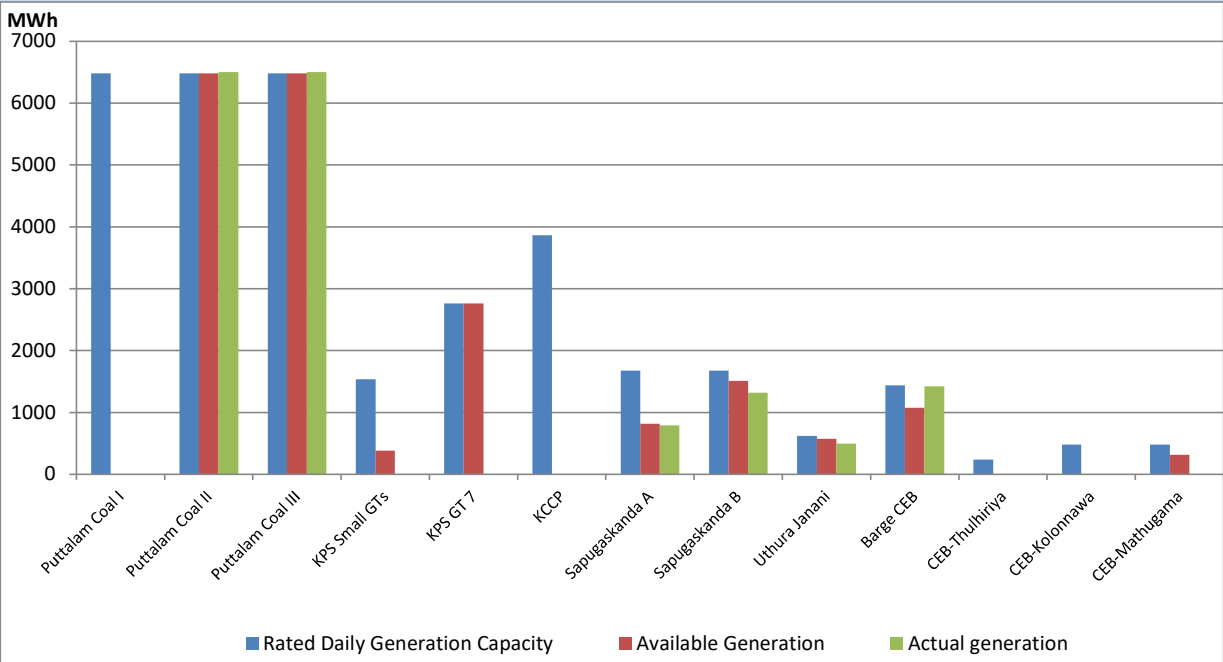
Category	Dispatch (GWh)	
CEB Hydro	34	33.30%
CEB Thermal Oil	12	11.43%
CEB Coal	40	39.33%
IPP Thermal	8	7.70%
SPP Wind	2	1.68%
CEB Wind	2	2.04%
SPP Solar	1	1.05%
SPP Solid Waste	1	0.63%
Mini Hydro	3	2.85%
Total	101	

For Current Year

Category	Dispatch (GWh)	
CEB Hydro	34	33.30%
CEB Thermal Oil	12	11.43%
CEB Coal	40	39.33%
IPP Thermal	8	7.70%
SPP Wind	2	1.68%
CEB Wind	2	2.04%
SPP Solar	1	1.05%
SPP Solid Waste	1	0.63%
Mini Hydro	3	2.85%
Total	101	

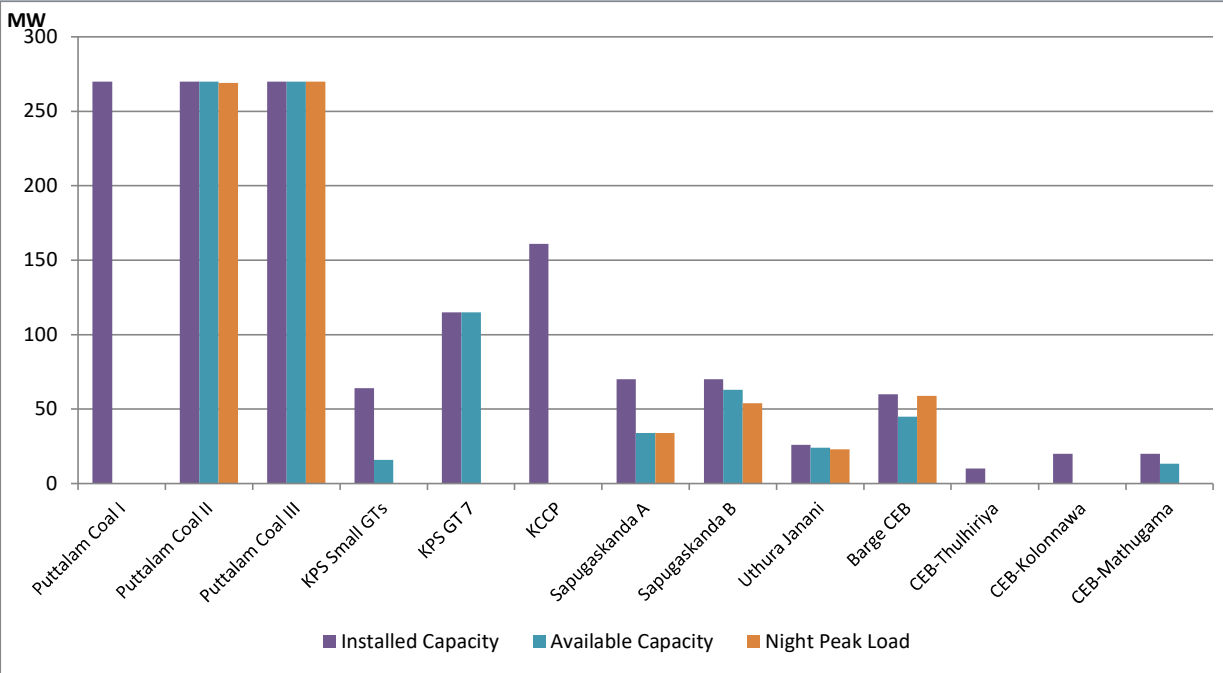
CEB owned Thermal Plant Dispatch

January 3, 2023



Available Generation is estimated based on plant availability at 6.00am on January 4, 2023

CEB owned Thermal Plant Loading at the Night Peak

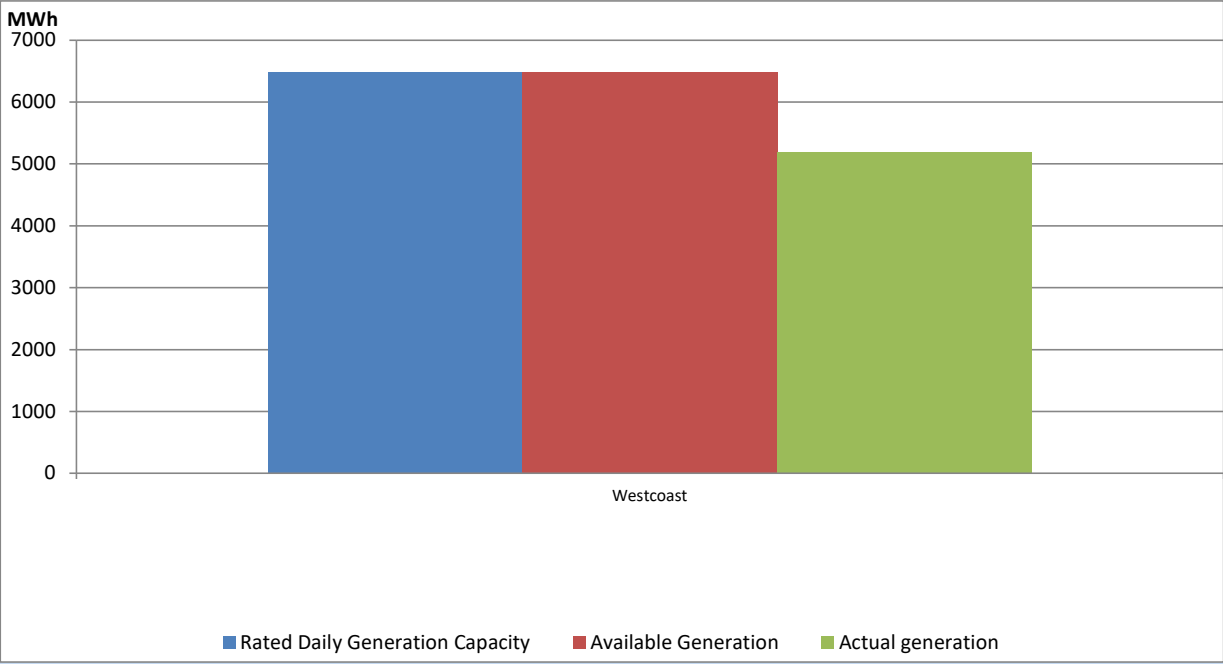


Note- Plant avilability is recorded at 6.00 am on January 4, 2023

IPP owned Thermal Plant Dispatch

January 3, 2023

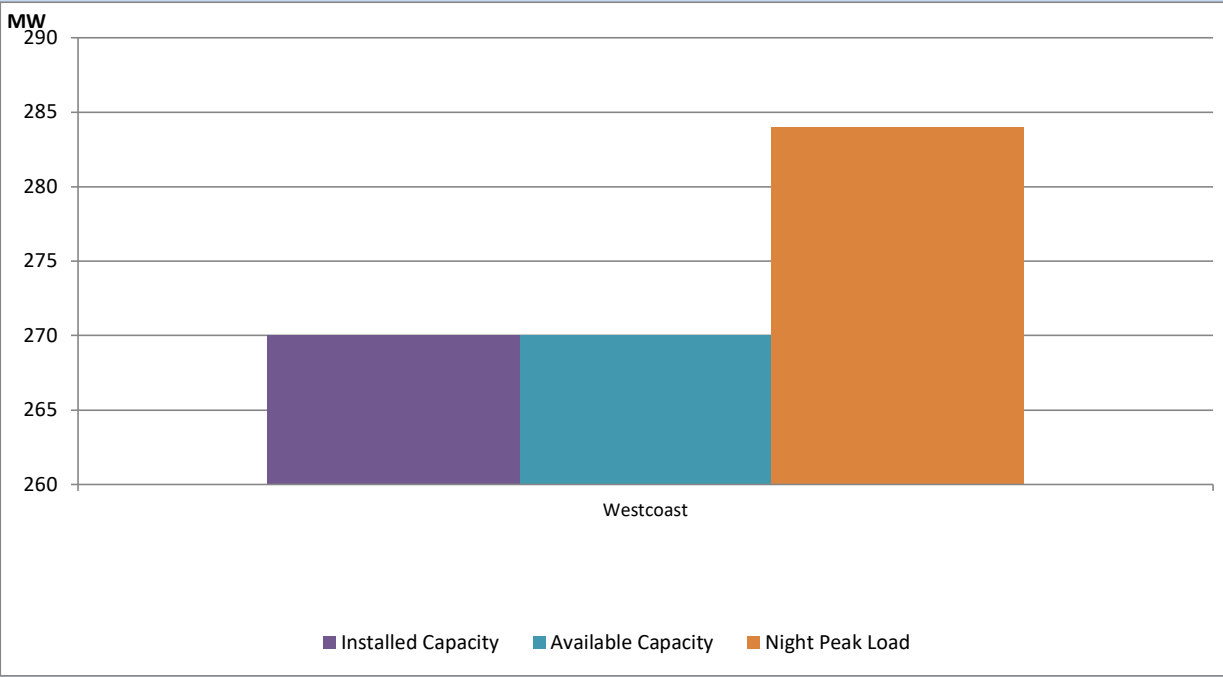
Asia Power, V Power Pallekale, Vpower Galle, V Power Horana, Vpower Hambantota, Vpower Valachchena and Altaqa Mahiyanganaya are not available due to expiration of PPAs



Available Generation is estimated based on plant availability at 6.00am on

January 4, 2023

IPP owned Thermal Plant Loading at the Night Peak

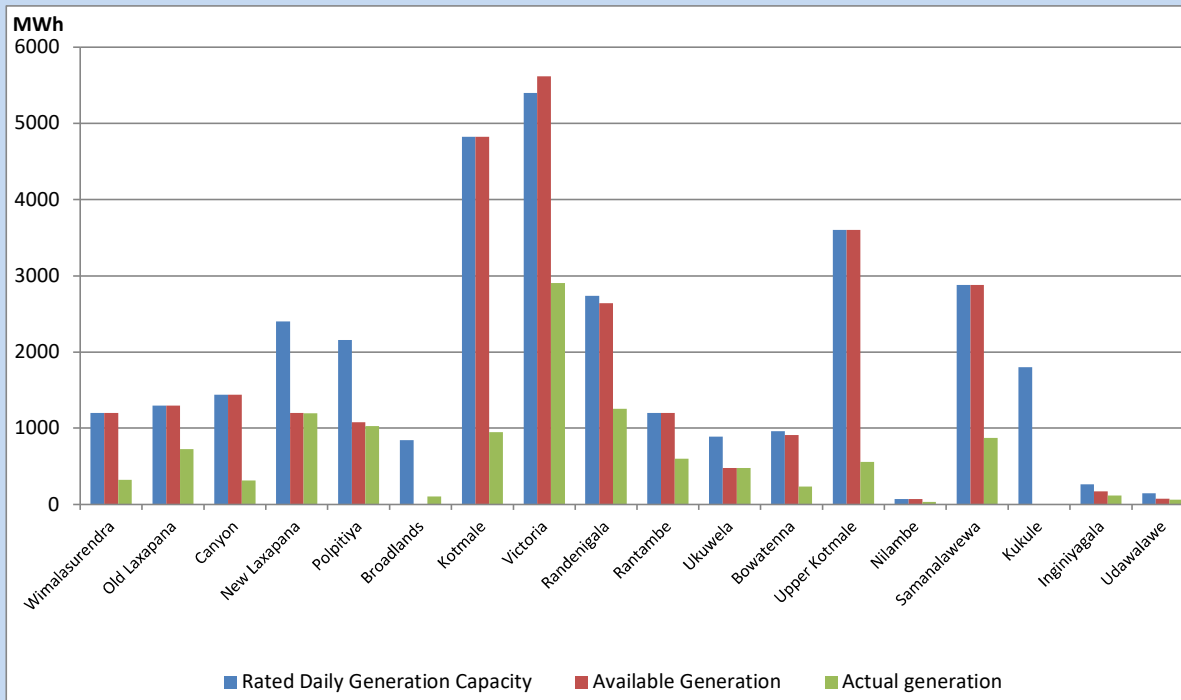


Note- Plant avilability is recorded at 6.00 am on

January 4, 2023

Major Hydro Plant Dispatch

January 3, 2023

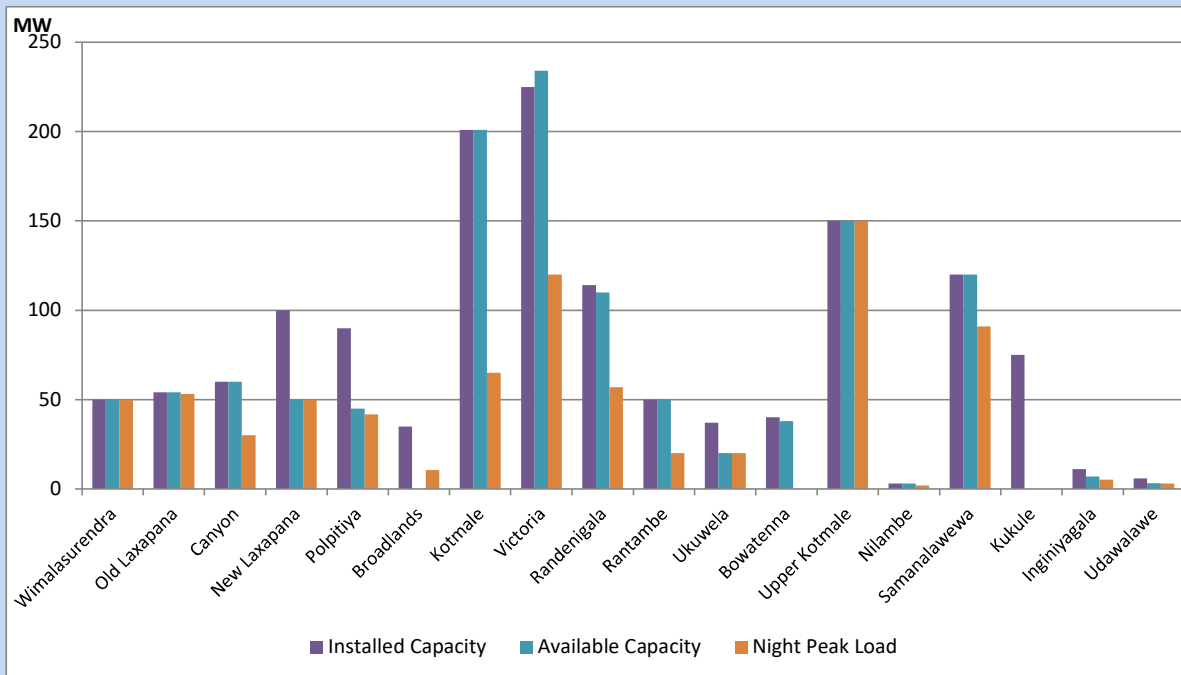


Available Generation is estimated based on plant availability at 6.00am on
Broadlands power plant is operating in the Commissioning Stage

January 4, 2023

Major Hydro Plant Loading at Night Peak

January 3, 2023



Note- Plant availability is recorded at 6.00 am on
Broadlands power plant is operating in the Commissioning Stage

January 4, 2023

Summary of Major Plant performance

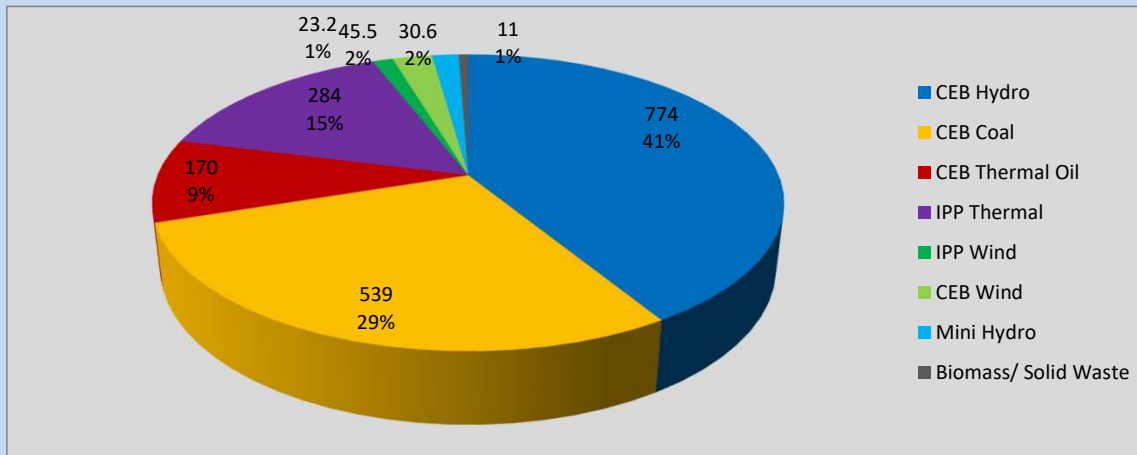
Plant	Installed Capacity	Plant Availability	Night peak Load	Plant Dispatch
	(MW)	(MW)	(MW)	(MWh)
Wimalasurendra	50	50	50	322
Old Laxapana	54	54	53	722
Canyon	60	60	30	316
New Laxapana	100	50	50	1,197
Polpitiya	90	45	42	1,027
Broadlands	35	0	11	103
Kotmale	201	201	65	950
Victoria	225	234	120	2,906
Randenigala	114	110	57	1,254
Rantambe	50	50	20	601
Ukuwela	37	20	20	478
Bowatenna	40	38	0	235
Upper Kotmale	150	150	150	559
Nilambe	3	3	2	32
Samanalawewa	120	120	91	871
Kukule	75	0	0	0
Inginiyagala	11	7	5	116
Udawalawe	6	3	3	62
Puttalam Coal I	270	0	0	0
Puttalam Coal II	270	270	269	6,499
Puttalam Coal III	270	270	270	6,503
KPS Small GTs	64	16	0	0
KPS GT 7	115	115	0	0
KCCP	161	0	0	0
Sapugaskanda A	70	34	34	794
Sapugaskanda B	70	63	54	1,319
Uthura Janani	26	24	23	500
Barge CEB	60	45	59	1,423
CEB-Thulhiriya	10	0	0	0
CEB-Kolonnawa	20	0	0	0
CEB-Mathugama	20	13	0	0
ACE Matara	24	0	0	0
Sojitz Kelanitissa	163	0	0	0
West Coast	270	270	284	5,194
ACE Embilipitiya	93	0	0	0
Total	3,397	2,315	1,872	36,990

Plant availability is the availability recorded at 6 am on

January 4, 2023

Contribution to the Night Peak in MW

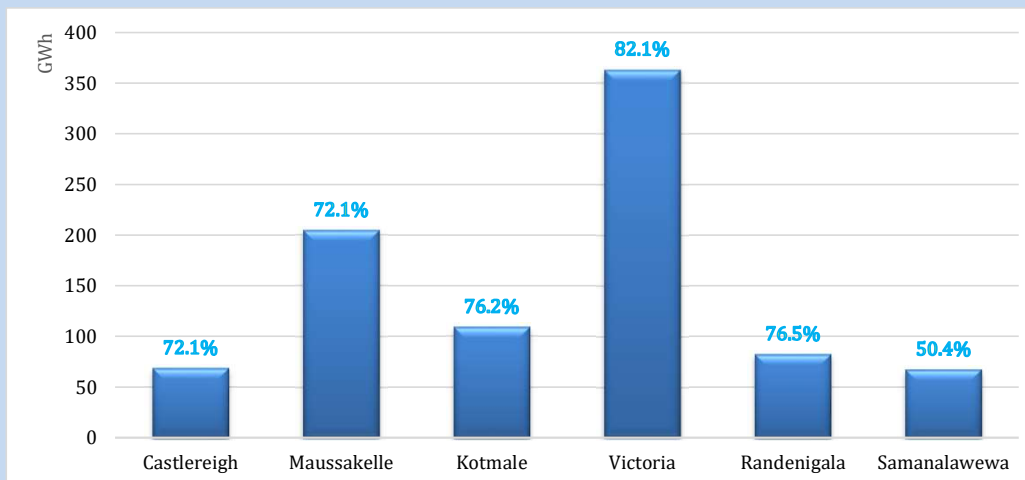
January 3, 2023



Night Peak*	1,877.1 MW
Day Peak	1,759.1 MW
Minimum Demand	1,100.7 MW

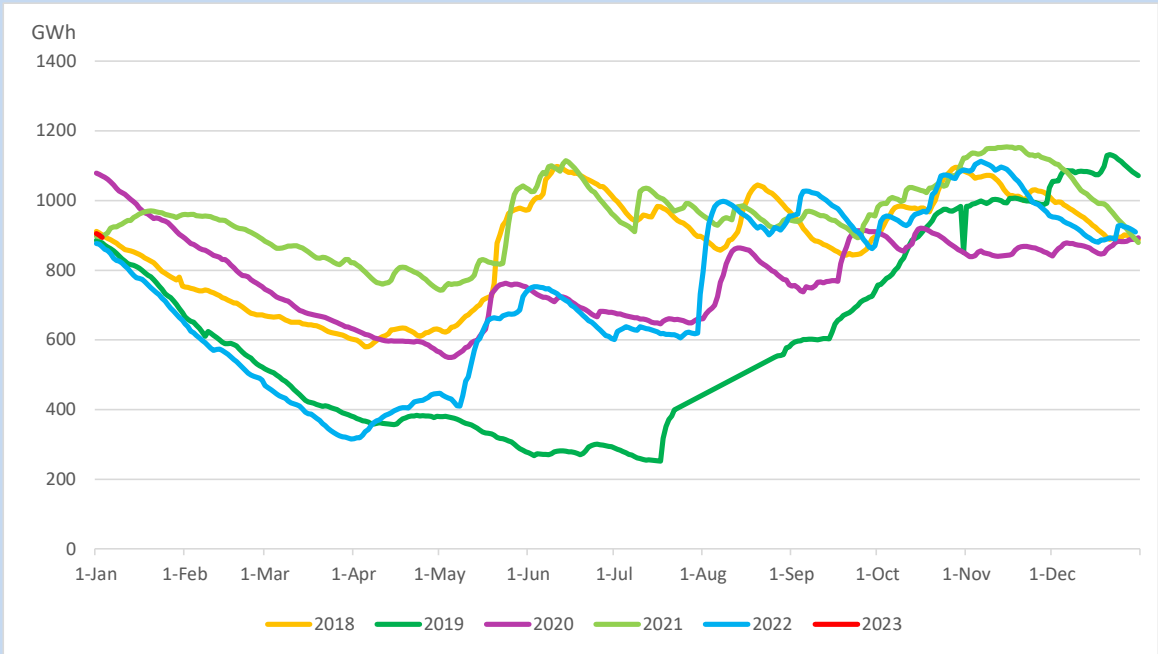
Above figures are excluding contribution from Roof Top Solar, non telemetered Solar and certain Mini Hydro plants

Reservoir Levels - as at 06.00 Hr on January 4, 2023

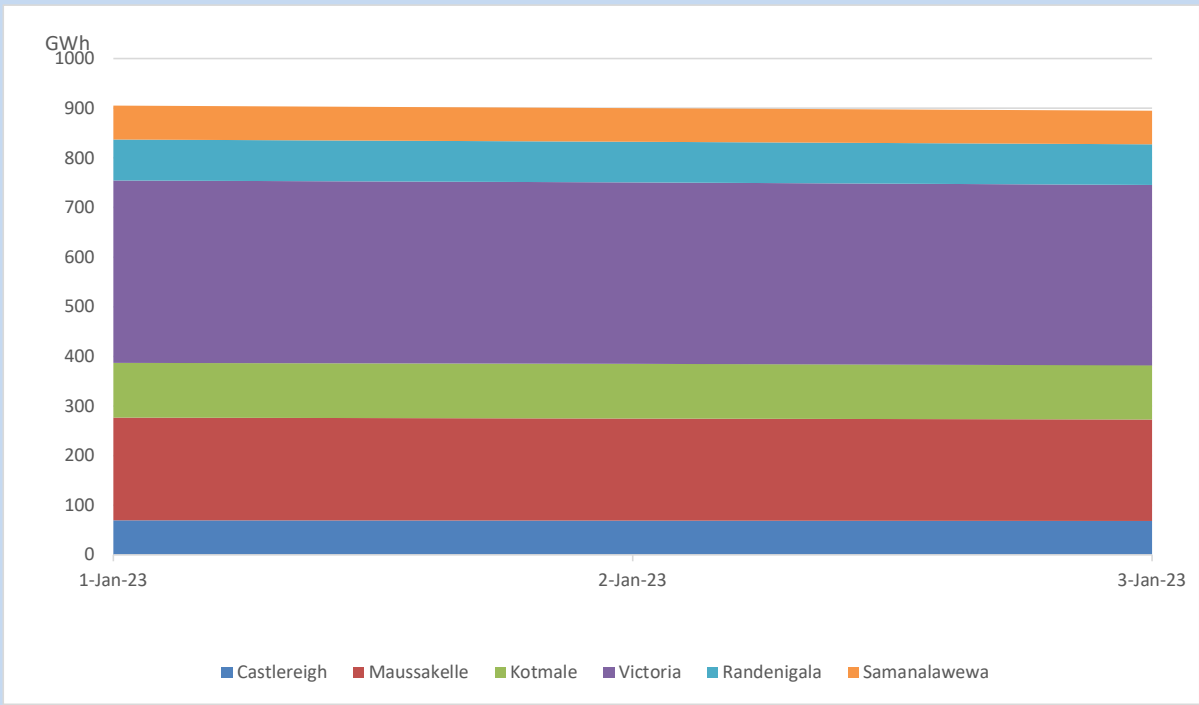


Total Reservoir Level	894.6 GWh
% of Total capacity	74.3%

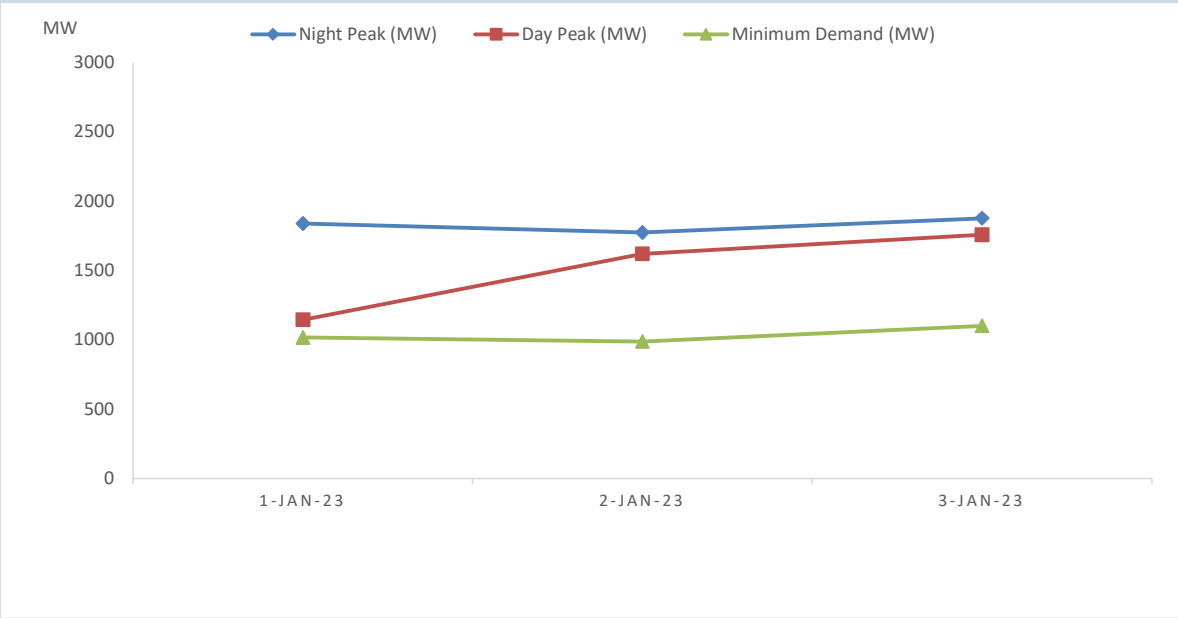
Comparison of Total Reservoir Storage Levels with Past Years



Variation of Major Hydro Reservoir Levels in the current year (GWh)



Variation of Demand during the current year

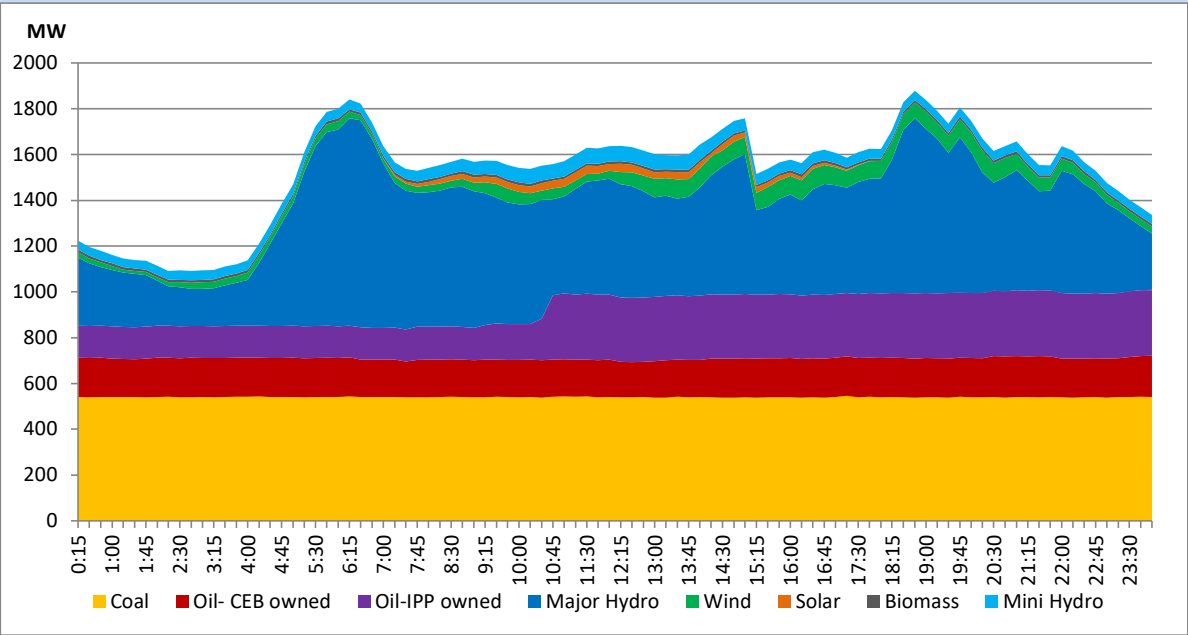


The above figures are excluding contribution from Roof Top Solar, 1MW solar, certain Wind plants and Mini Hydro plants

Daily Load Curve of the Previous day

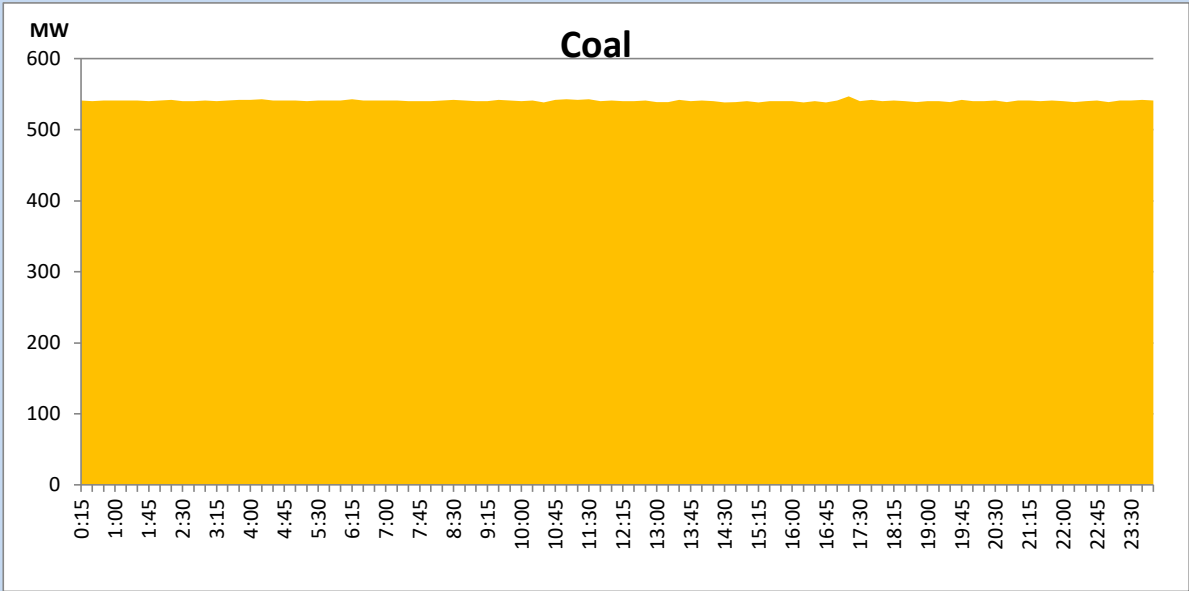
January 2, 2023

Solar and wind data is based on Telemetered Power Stations only



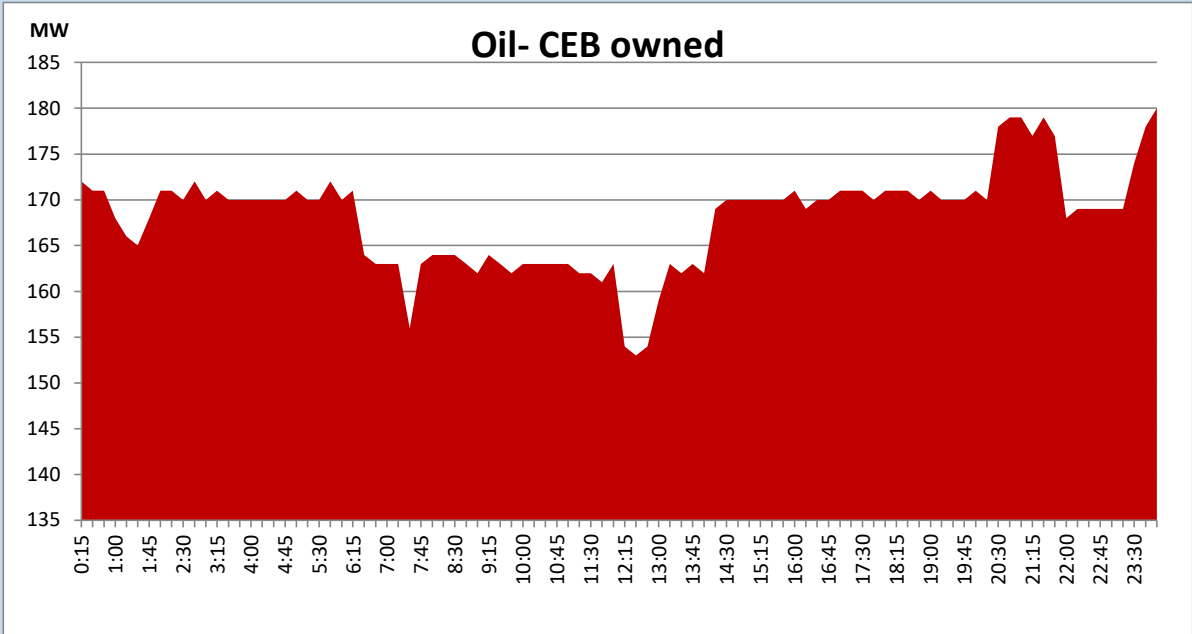
Coal Generation during the Previous day

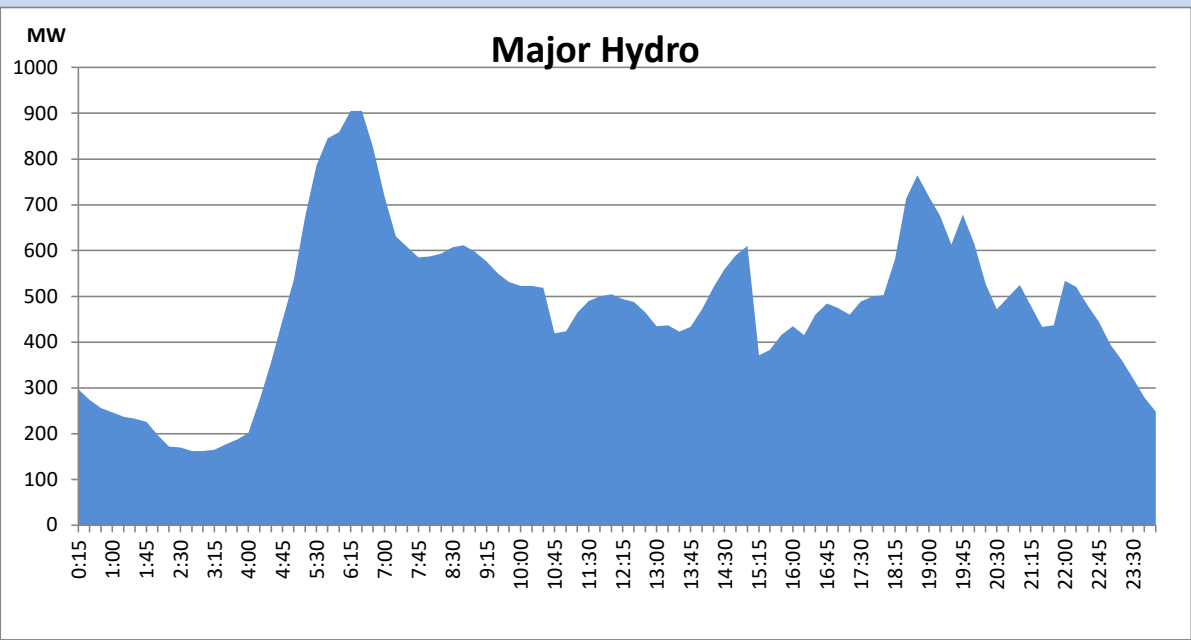
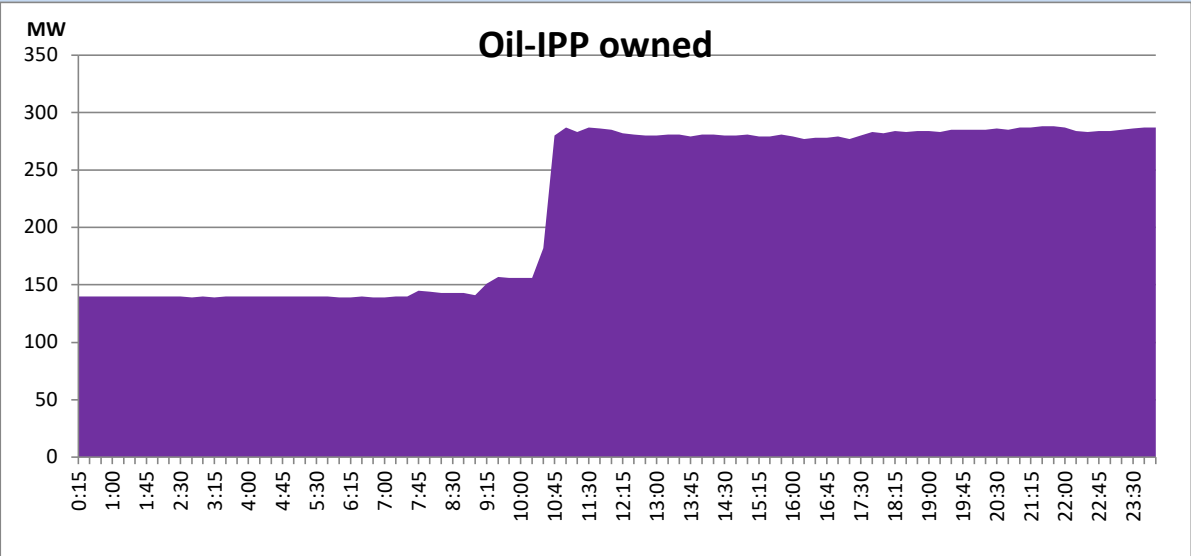
January 2, 2023



CEB Oil Plant Generation during the Previous day

January 2, 2023

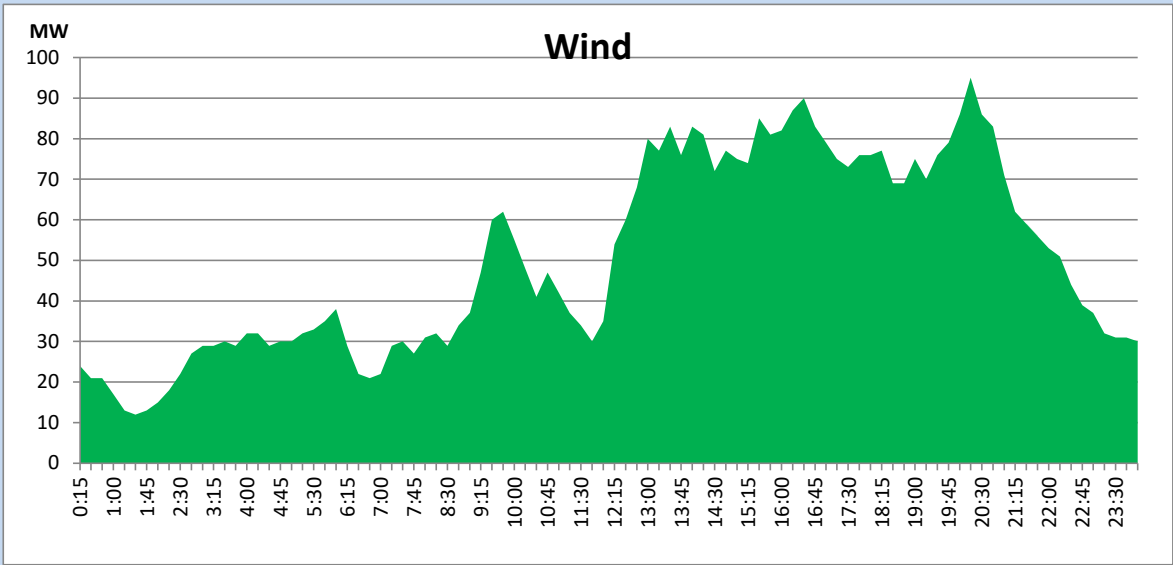




Wind Generation during the Previous day

January 2, 2023

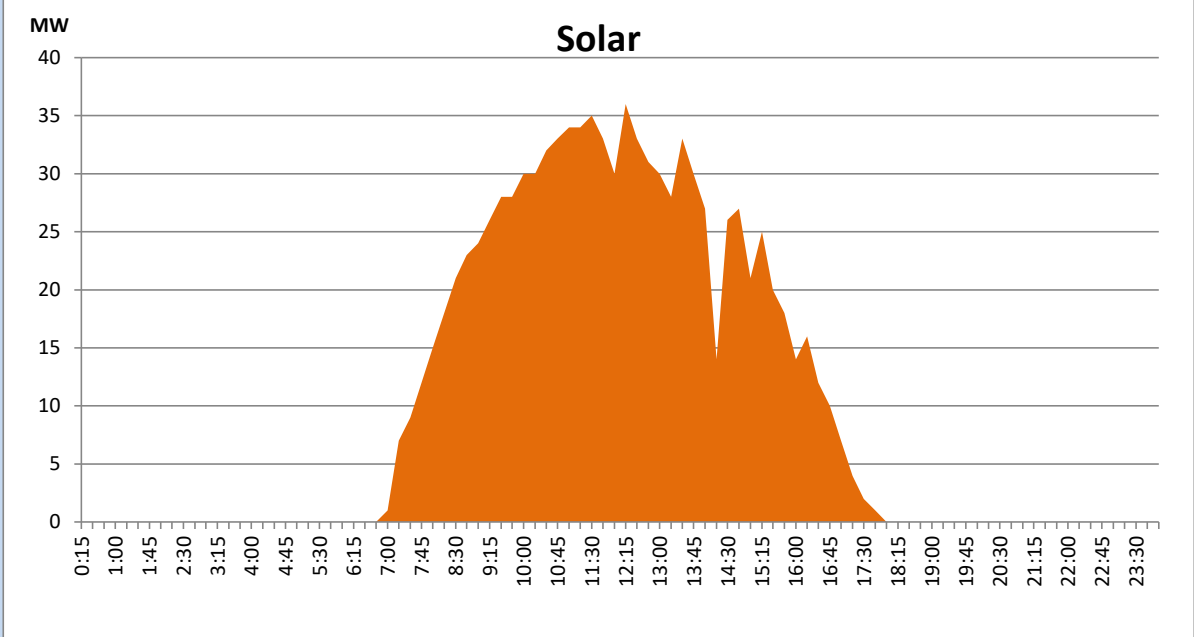
Based on Telemetered Power Stations only



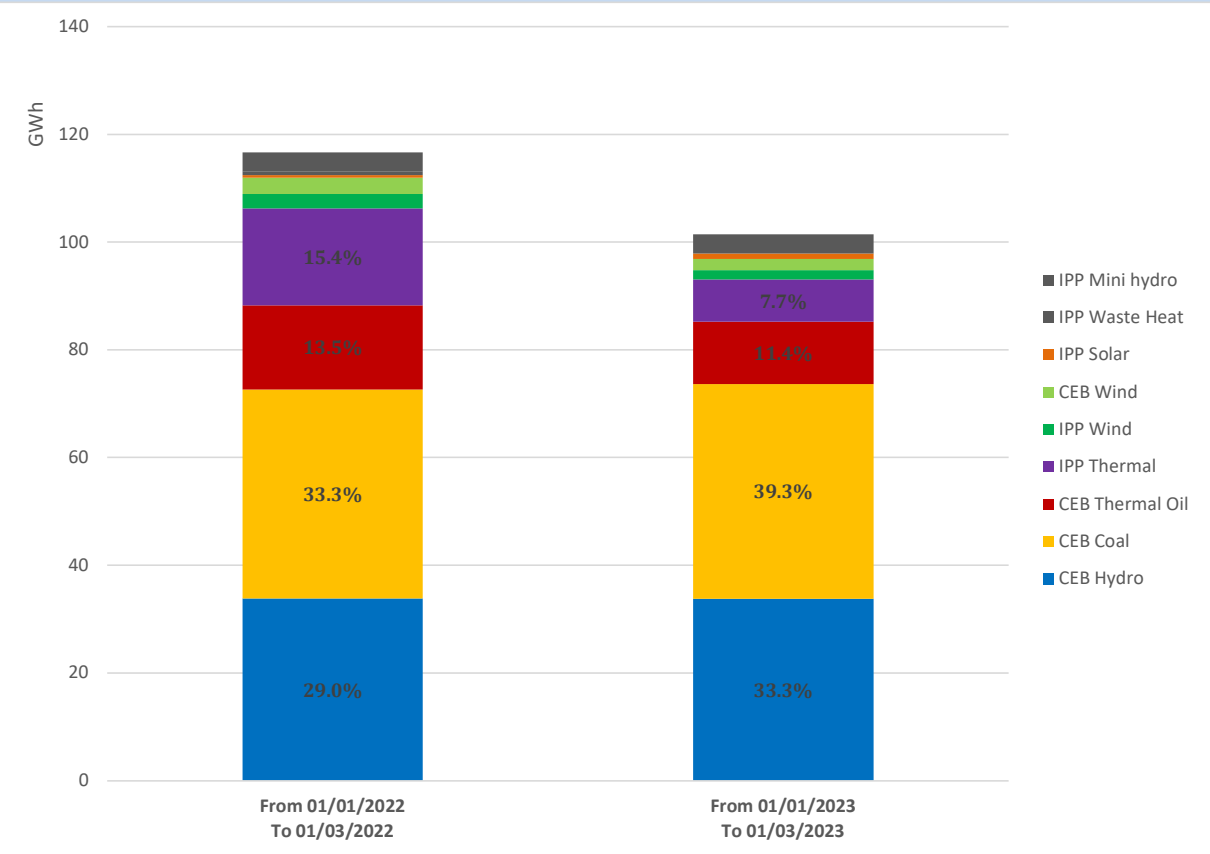
Solar Generation during the Previous day

January 2, 2023

Based on Telemetered Power Stations only



Cumulative Dispatch Comparison with Last Year



Thermal Plant Fuel types

Power Station	Primary Fuel
CEB Thermal	
Sapugaskanda 1	Heavy Fuel
Sapugaskanda 2	Heavy Fuel
Kelanitissa Small Gas Turbines	Auto Diesel
GT 7 - Kelanitissa	Auto Diesel
Kelanitissa CCY	Naphtha or Diesel
Lakvijaya 1	Coal
Lakvijaya 2	Coal
Lakvijaya 3	Coal
Uthuru Janani	Heavy Fuel
Barge CEB	Heavy Fuel

Power Station	Primary Fuel
Private Thermal	
Sojitz - Kelanitissa	Auto Diesel
West Coast	Auto Diesel / Heavy Fuel
ACE Matara	Heavy Fuel
ACE Embilipitiya	Heavy Fuel

Major Incidents reported during the day**January 3, 2023**

1) Rotational manual load shedding was carried out from 15:00hrs to 22:00hrs.