

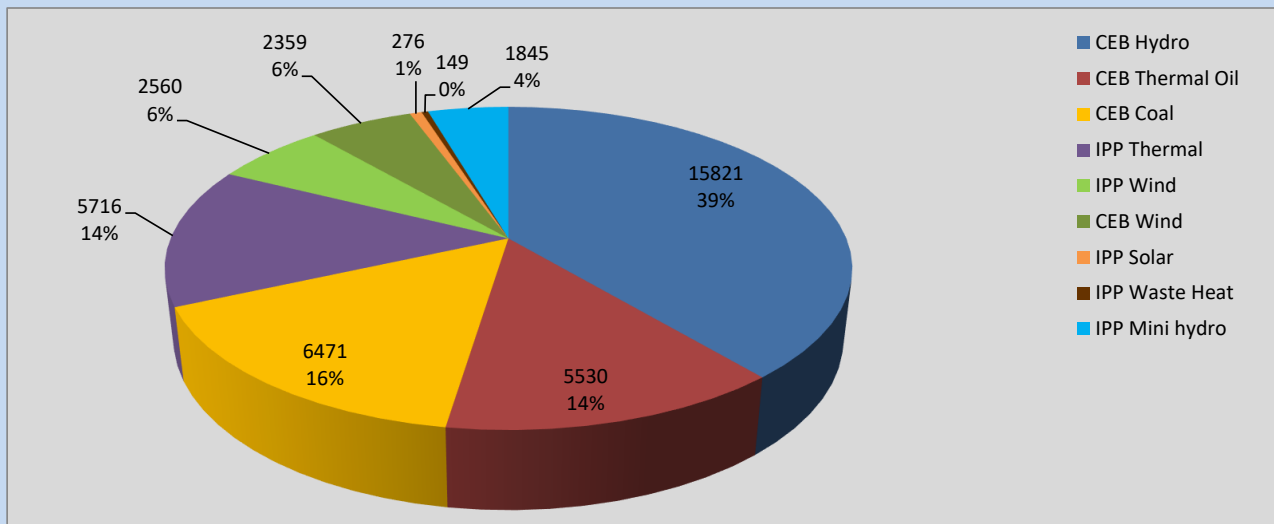
# Generation and Reservoirs Statistics

September 30, 2022



PUBLIC UTILITIES COMMISSION OF SRI LANKA

## Daily Generation Mix in MWh



**Total Generation** **40,727 MWh**

Note: Above data is excluding contribution from Roof Top Solar, 1MW Solar and certain Mini Hydro plants

## Cumulative Dispatch

Note: Following data is Excluding contribution from Roof Top Solar, 1MW solar and Mini Hydro plants

### For Current Month

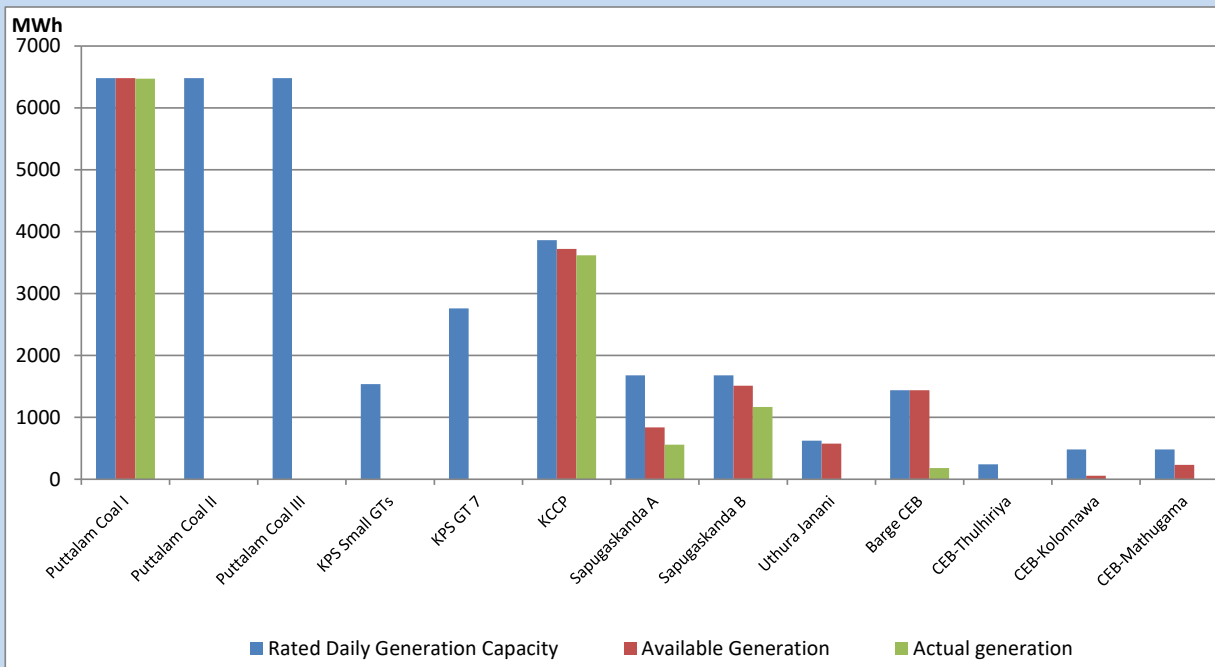
Category	Dispatch (GWh)	
CEB Hydro	566.49	47.80%
CEB Thermal Oil	66.34	5.60%
CEB Coal	328.07	27.68%
IPP Thermal	48.83	4.12%
SPP Wind	50.16	4.23%
CEB Wind	59.96	5.06%
SPP Solar	9.12	0.77%
SPP Solid Waste	5.71	0.48%
Mini Hydro	50.53	4.26%
<b>Total</b>	<b>1,185.21</b>	

### For Current Year

Category	Dispatch (GWh)	
CEB Hydro	3,700.2	33.43%
CEB Thermal Oil	1,178.7	10.65%
CEB Coal	4,041.2	36.51%
IPP Thermal	1,075.8	9.72%
SPP Wind	281.0	2.54%
CEB Wind	306.0	2.76%
SPP Solar	71.4	0.64%
SPP Solid Waste	54.9	0.50%
Mini Hydro	360.5	3.26%
<b>Total</b>	<b>11,069.3</b>	

## CEB owned Thermal Plant Dispatch

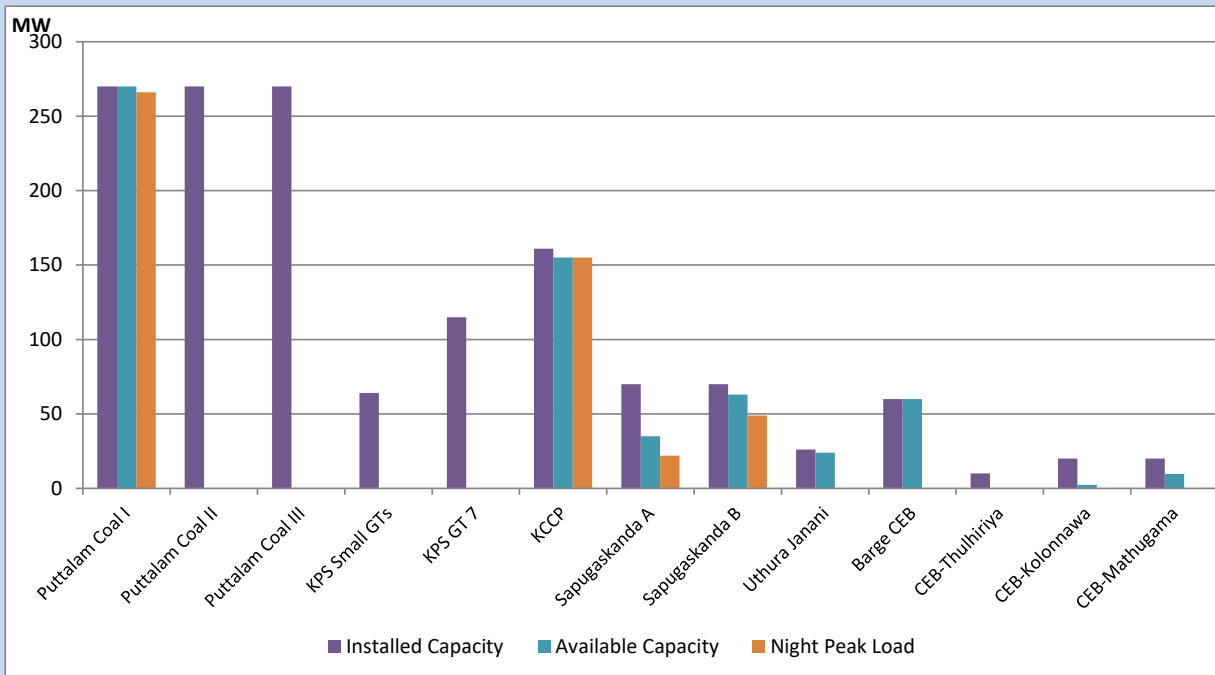
September 30, 2022



Available Generation is estimated based on plant availability at 6.00am on

October 1, 2022

## CEB owned Thermal Plant Loading at the Night Peak



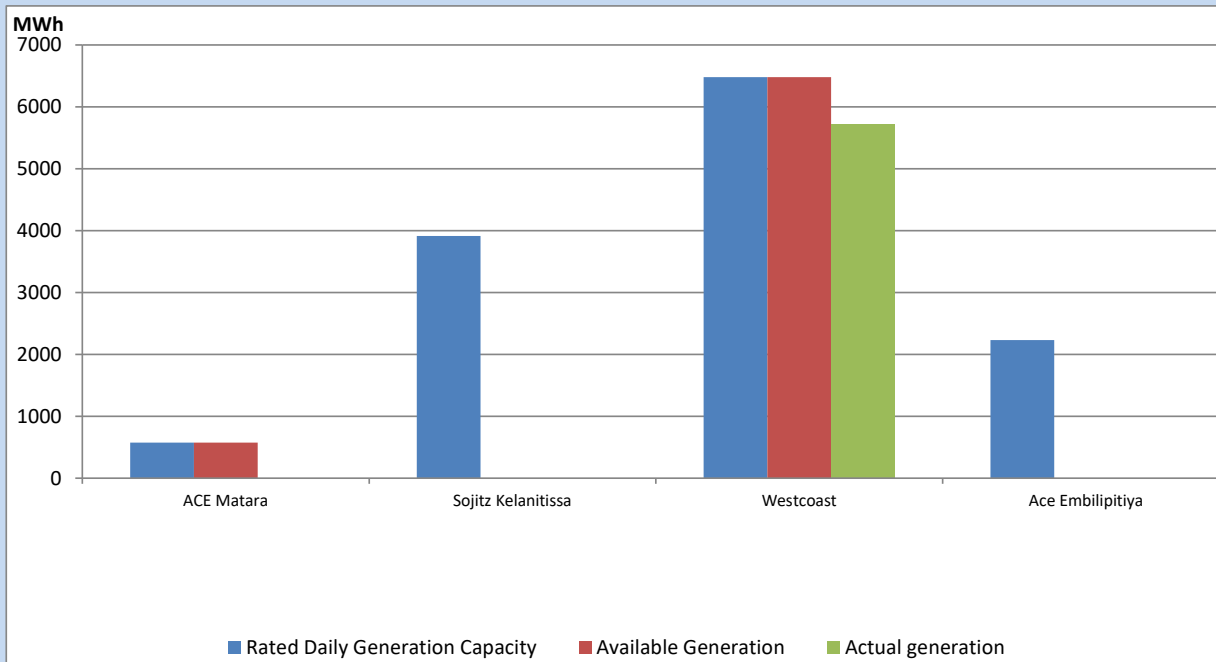
Note- Plant availability is recorded at 6.00 am on

October 1, 2022

## IPP owned Thermal Plant Dispatch

September 30, 2022

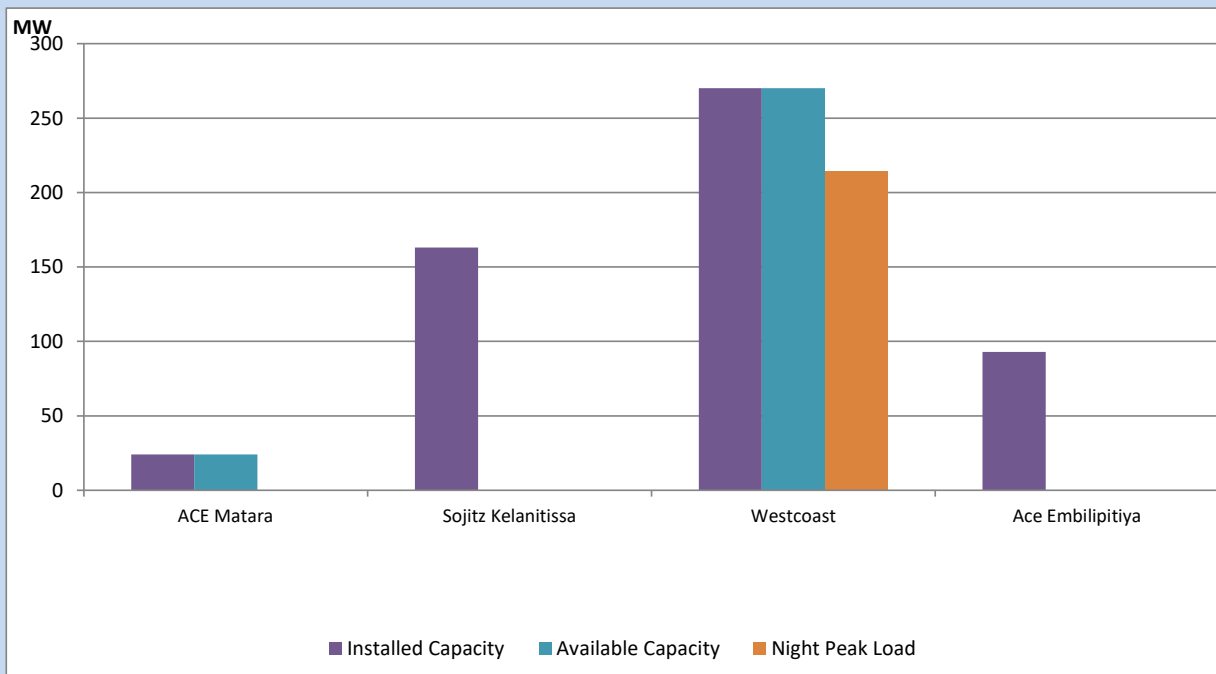
Asia Power, V Power Pallekale, Vpower Galle, V Power Horana, Vpower Hambantota, Vpower Valachchena and Altaqa Mahiyanganaya are not available due to expiration of PPAs



Available Generation is estimated based on plant availability at 6.00am on

October 1, 2022

## IPP owned Thermal Plant Loading at the Night Peak

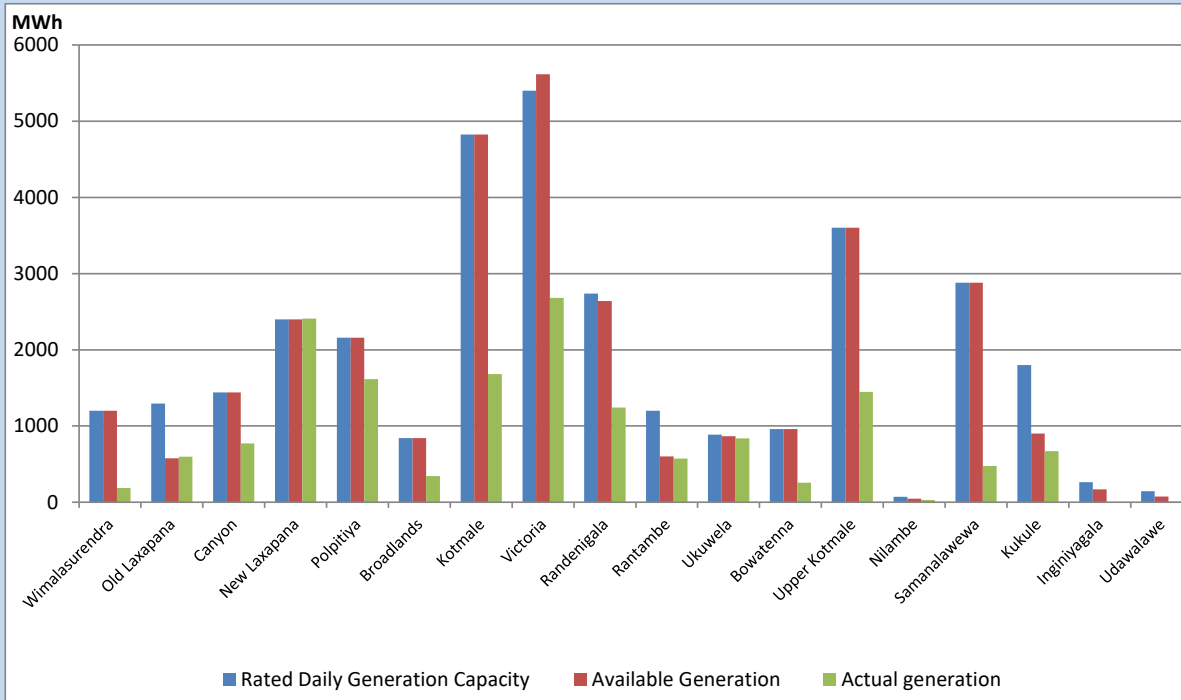


Note- Plant availability is recorded at 6.00 am on

October 1, 2022

## Major Hydro Plant Dispatch

September 30, 2022

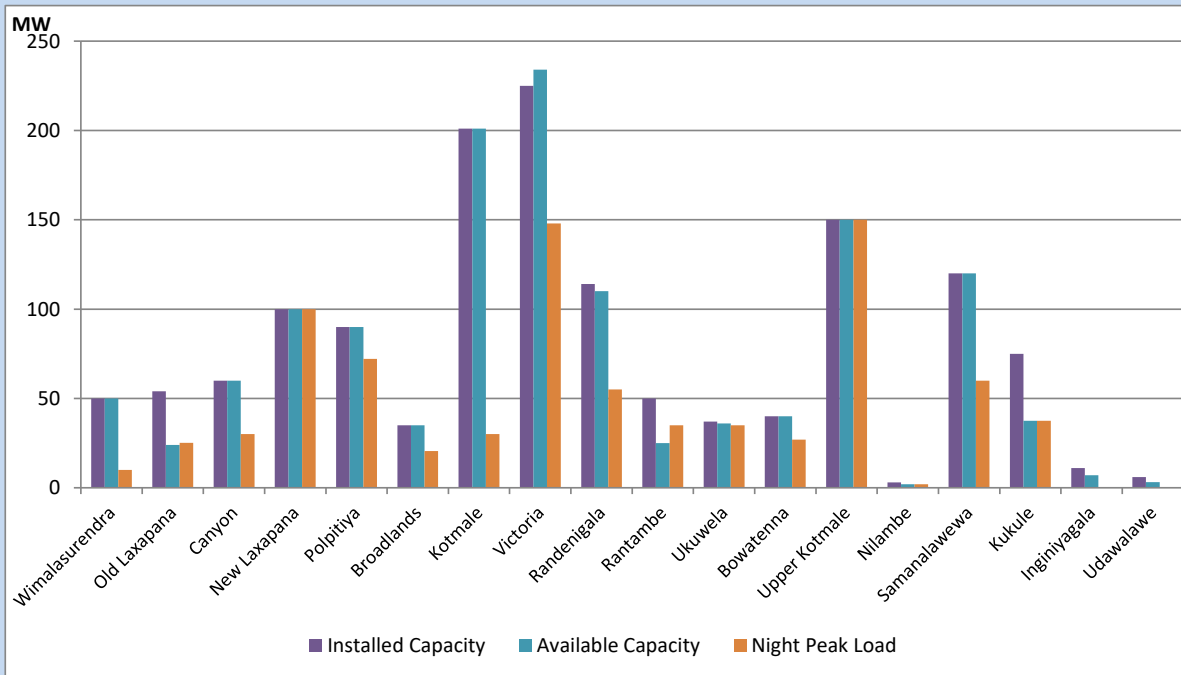


Available Generation is estimated based on plant availability at 6.00am on  
Broadlands power plant is operating in the Commissioning Stage

October 1, 2022

## Major Hydro Plant Loading at Night Peak

September 30, 2022



Note- Plant availability is recorded at 6.00 am on  
Broadlands power plant is operating in the Commissioning Stage

October 1, 2022

## Summary of Major Plant performance

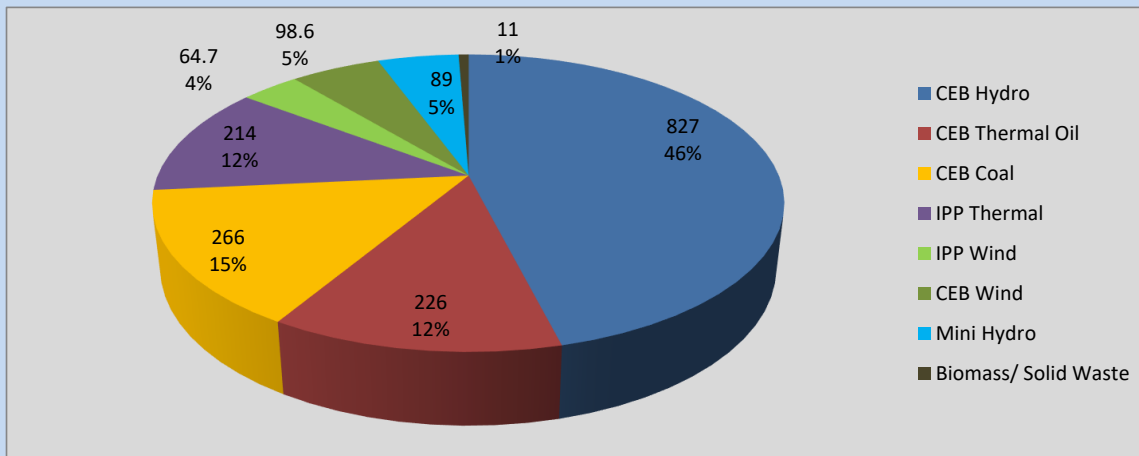
Plant	Installed Capacity	Plant Availability	Night peak Load	Plant Dispatch
	(MW)	(MW)	(MW)	(MWh)
Wimalasurendra	50	50	10	186
Old Laxapana	54	24	25	597
Canyon	60	60	30	773
New Laxapana	100	100	100	2,409
Polpitiya	90	90	72	1,616
Broadlands	35	35	21	344
Kotmale	201	201	30	1,680
Victoria	225	234	148	2,683
Randenigala	114	110	55	1,243
Rantambe	50	25	35	572
Ukuwela	37	36	35	837
Bowatenna	40	40	27	255
Upper Kotmale	150	150	150	1,447
Nilambe	3	2	2	28
Samanalawewa	120	120	60	474
Kukule	75	38	38	669
Inginiyagala	11	7	0	0
Udawalawe	6	3	0	8
Puttalam Coal I	270	270	266	6,471
Puttalam Coal II	270	0	0	0
Puttalam Coal III	270	0	0	0
KPS Small GTs	64	0	0	0
KPS GT 7	115	0	0	0
KCCP	161	155	155	3,620
Sapugaskanda A	70	35	22	561
Sapugaskanda B	70	63	49	1,168
Uthura Janani	26	24	0	0
Barge CEB	60	60	0	181
CEB-Thulhiriya	10	0	0	0
CEB-Kolonnawa	20	2	0	0
CEB-Mathugama	20	10	0	0
ACE Matara	24	24	0	0
Sojitz Kelanitissa	163	0	0	0
West Coast	270	270	214	5,716
ACE Embilipitiya	93	0	0	0
<b>Total</b>	<b>3,397</b>	<b>2,238</b>	<b>1,807</b>	<b>40,727</b>

Plant availability is the availability recorded at 6 am on

October 1, 2022

## Contribution to the Night Peak in MW

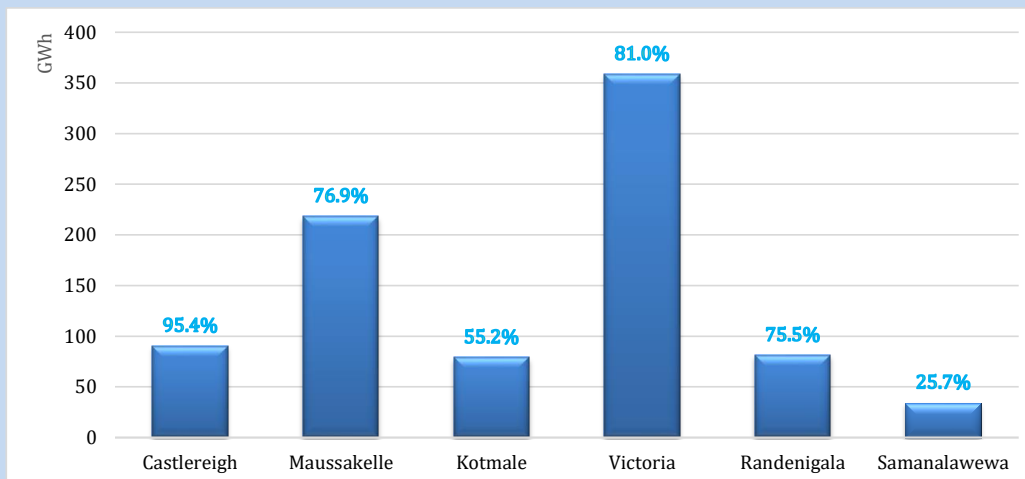
September 30, 2022



Night Peak*	1,796.6 MW
Day Peak	1,906.3 MW
Minimum Demand	1,334.1 MW

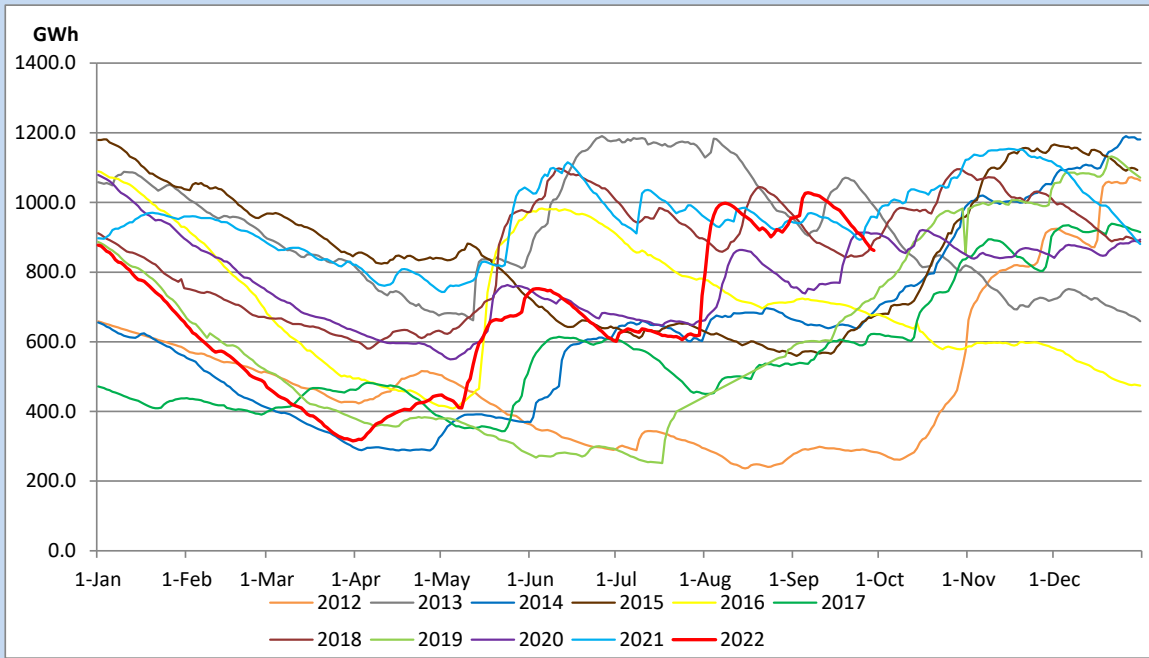
Above figures are excluding contribution from Roof Top Solar, 1MW solar, certain Wind plants and Mini Hydro plants

## Reservoir Levels - as at 06.00 Hr on October 1, 2022

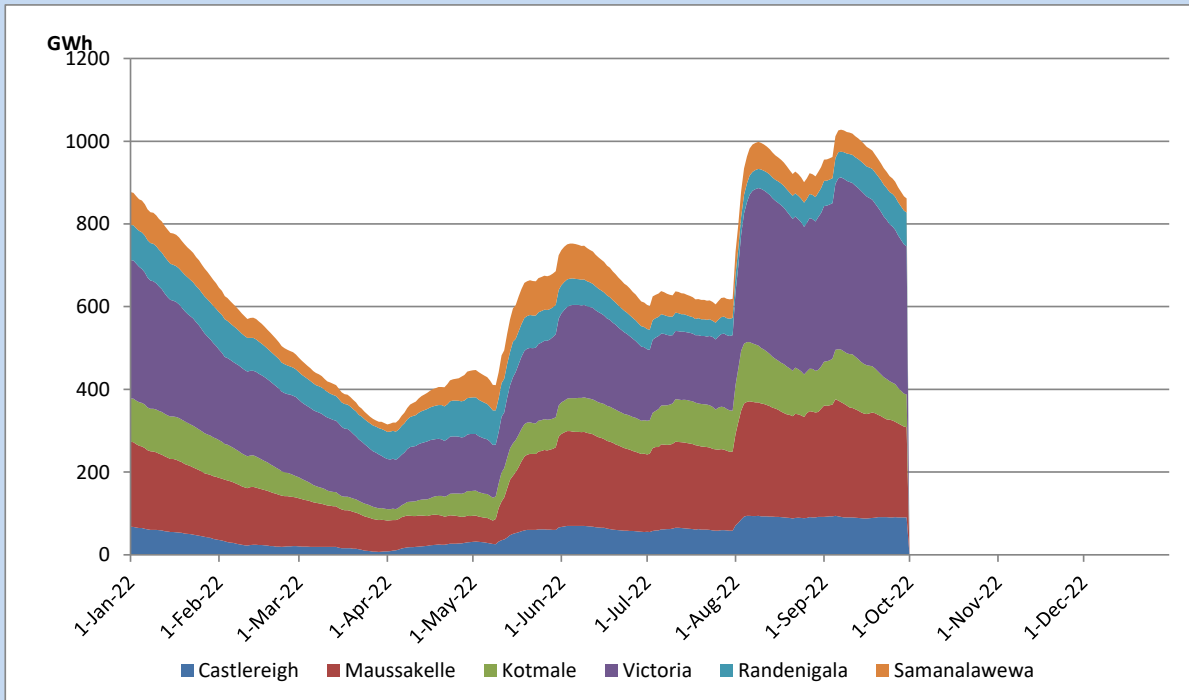


Total Reservoir Level	861.9 GWh
% of Total capacity	71.5%

## Comparison of Total Reservoir Storage Levels with Past Years

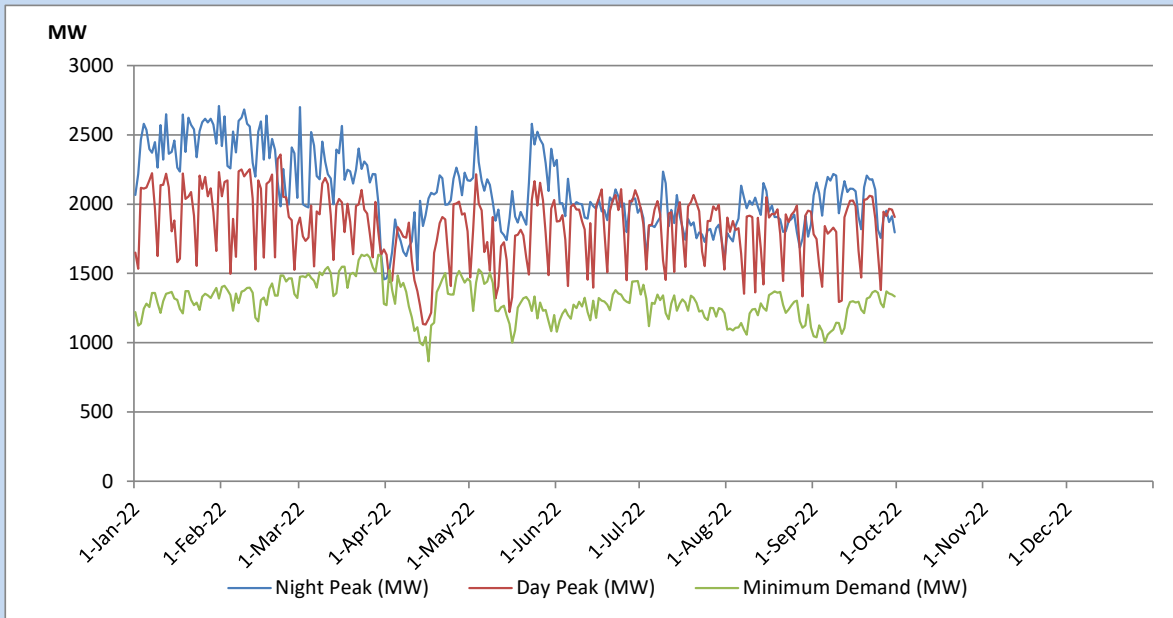


## Variation of Major Hydro Reservoir Levels in the current year (GWh)





## Variation of Demand during the current year

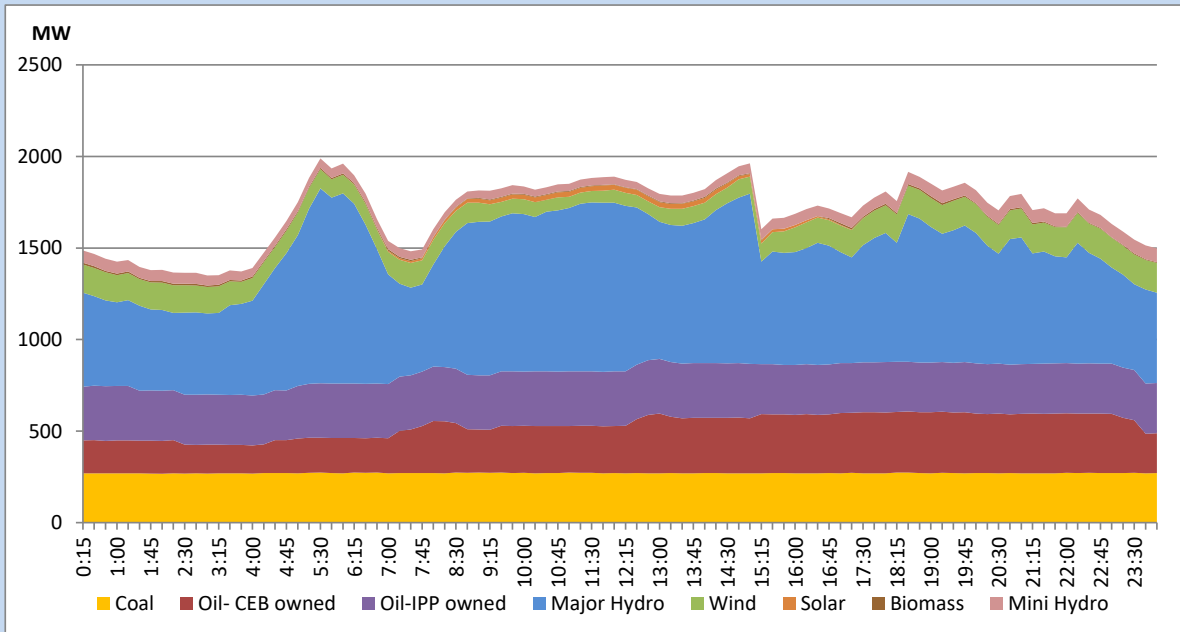


The above figures are excluding contribution from Roof Top Solar, 1MW solar, certain Wind plants and Mini Hydro plants

## Daily Load Curve of the Previous day

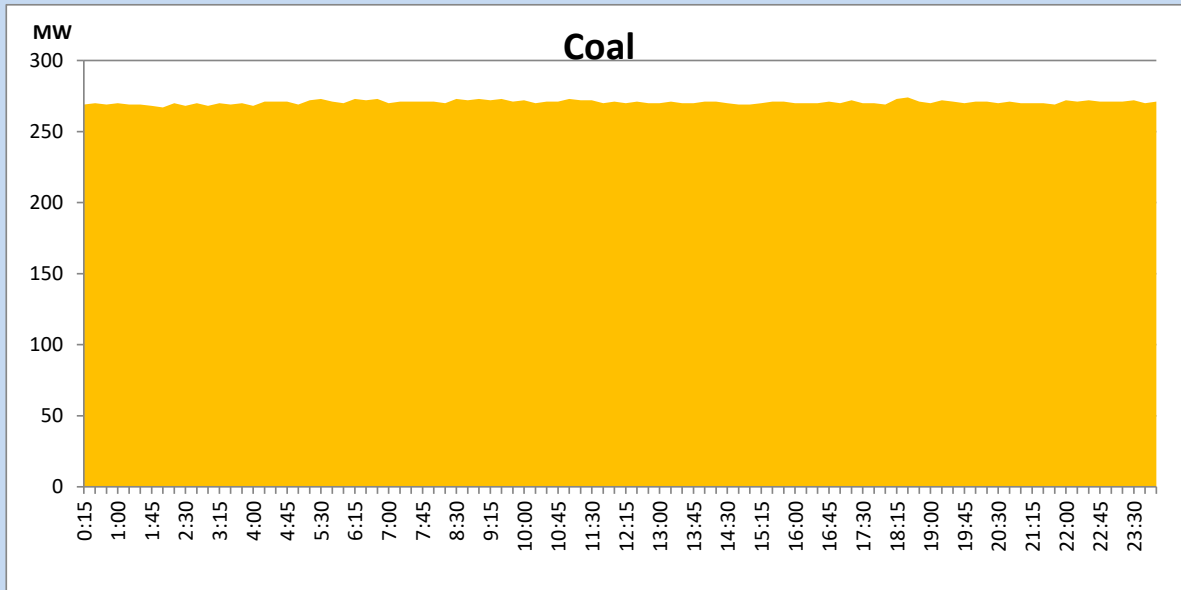
September 29, 2022

Solar and wind data is based on Telemetered Power Stations only



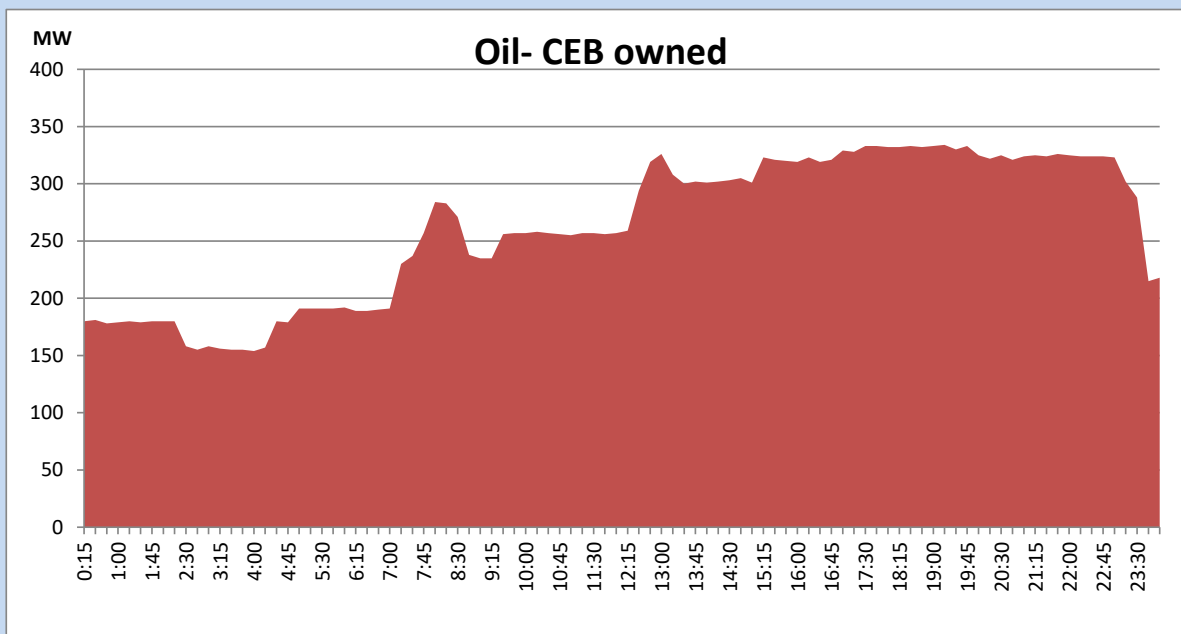
## Coal Generation during the Previous day

September 29, 2022



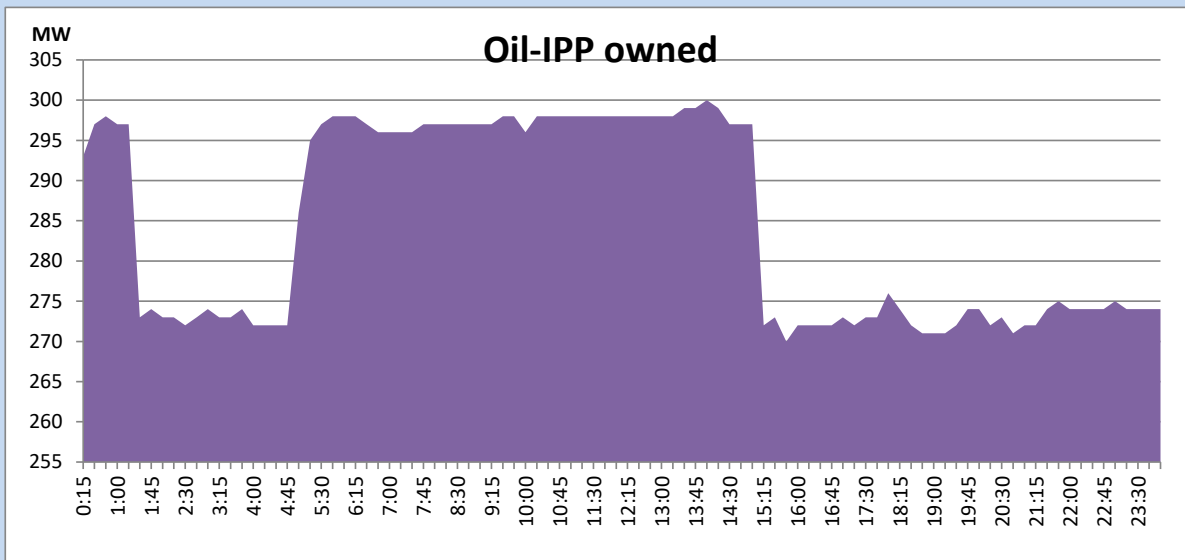
## CEB Oil Plant Generation during the Previous day

September 29, 2022



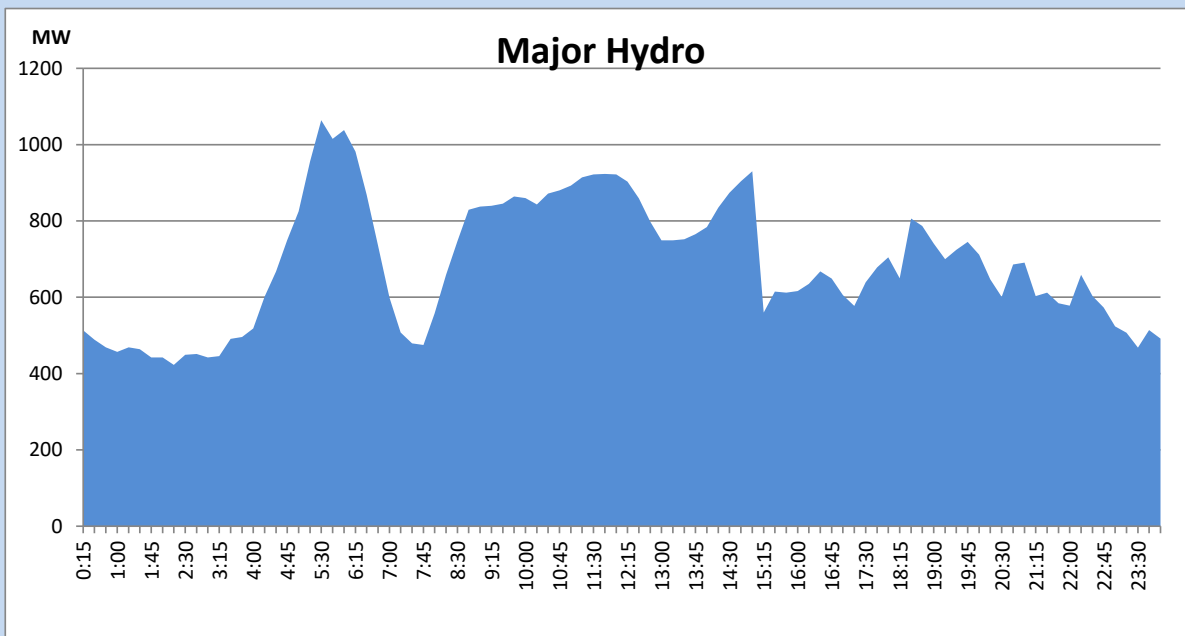
## IPP Oil Plant Generation during the Previous day

September 29, 2022



## Major Hydro Generation during the Previous day

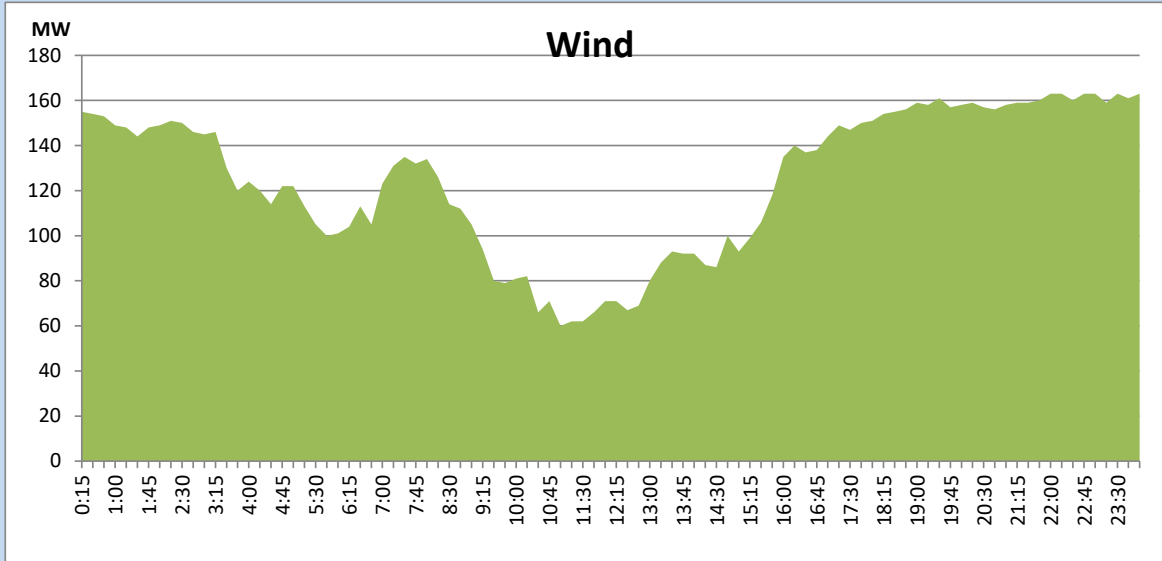
September 29, 2022



## Wind Generation during the Previous day

September 29, 2022

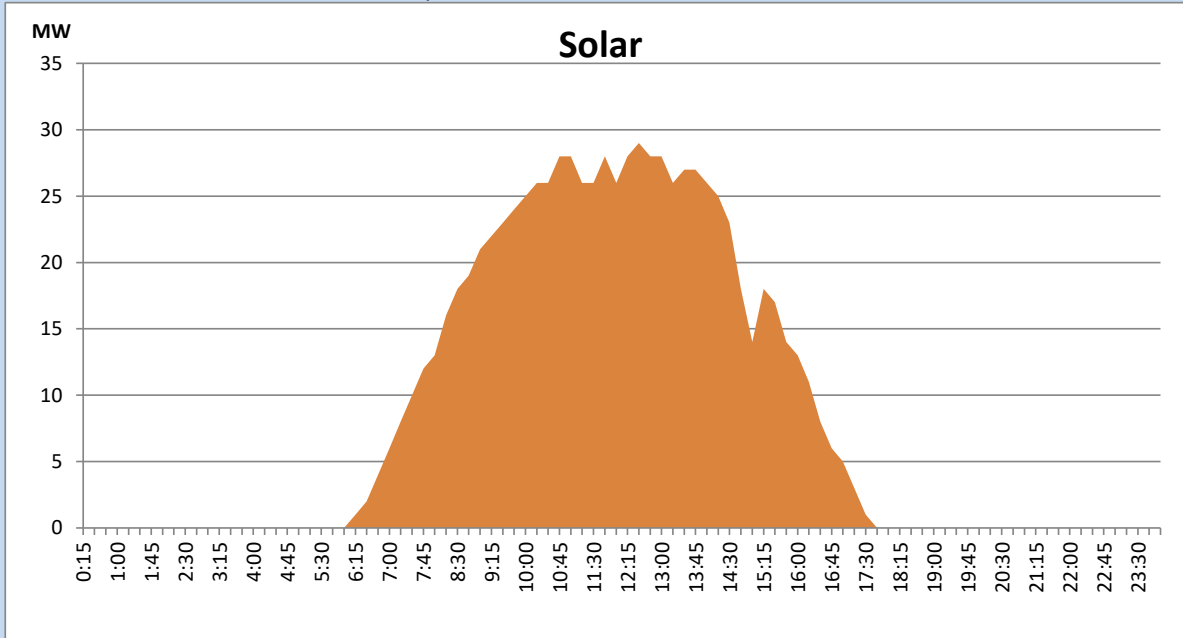
Based on Telemetered Power Stations only



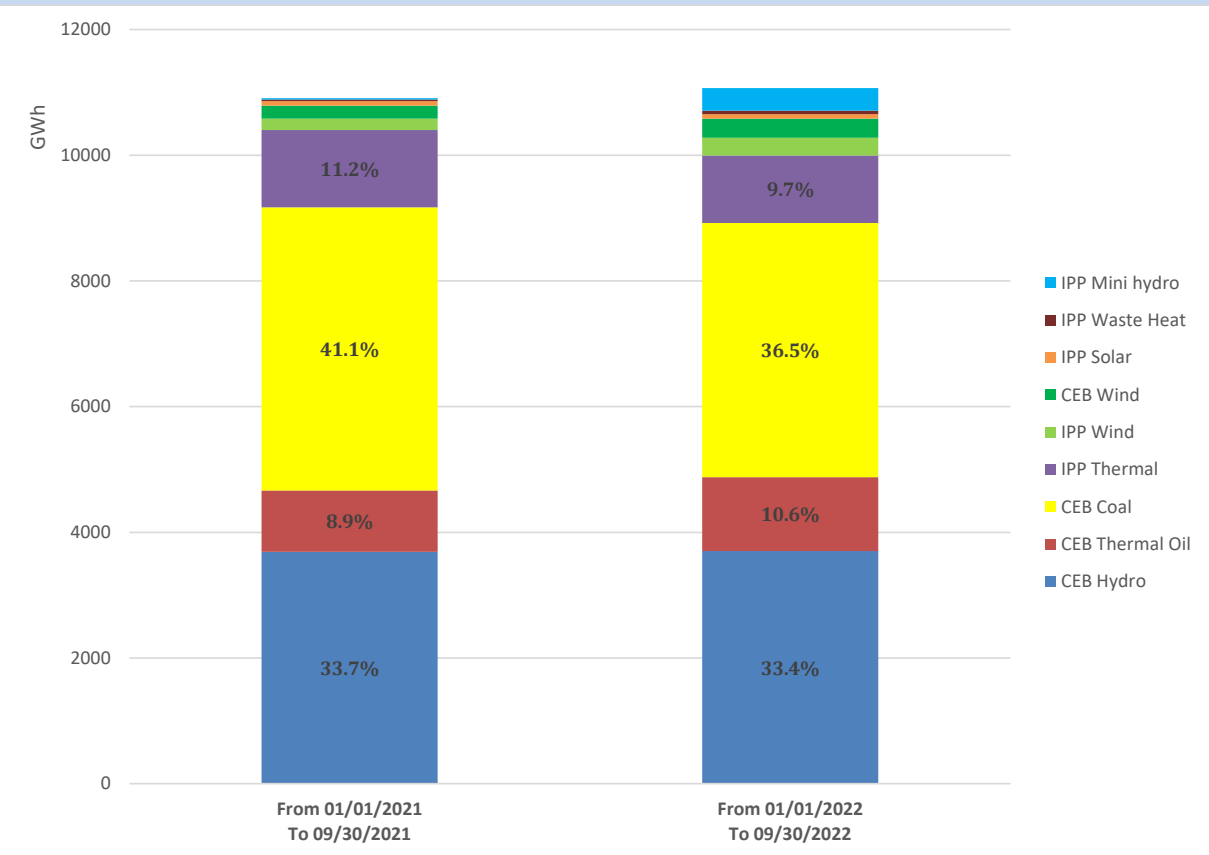
## Solar Generation during the Previous day

September 29, 2022

Based on Telemetered Power Stations only



# Cumulative Dispatch Comparison with Last Year



## Thermal Plant Fuel types

Power Station	Primary Fuel
CEB Thermal	
Sapugaskanda 1	Heavy Fuel
Sapugaskanda 2	Heavy Fuel
Kelanitissa Small Gas Turbines	Auto Diesel
GT 7 - Kelanitissa	Auto Diesel
Kelanitissa CCY	Naphtha or Diesel
Lakvijaya 1	Coal
Lakvijaya 2	Coal
Lakvijaya 3	Coal
Uthuru Janani	Heavy Fuel
Barge CEB	Heavy Fuel

Power Station	Primary Fuel
Private Thermal	
Sojitz - Kelanitissa	Auto Diesel
West Coast	Auto Diesel / Heavy Fuel
ACE Matara	Heavy Fuel
ACE Embilipitiya	Heavy Fuel

## Major Incidents during the day -as reported by CEB morning of

October 1, 2022

- 1) Rotational manual load shedding was carried out from 15:00hrs to 22:00hrs.
- 2) Sojitz cable tripped at 20:24 hrs due to an intertrip signal sent from the plant side. The cct was normalized at 6:33 hrs on 01/10/2022.