

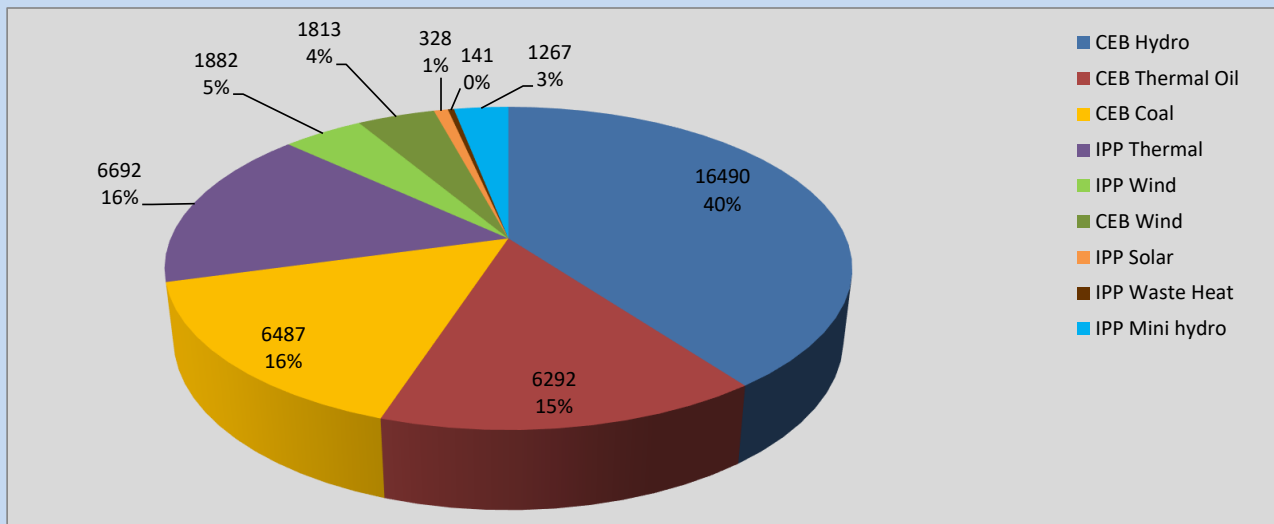
Generation and Reservoirs Statistics

September 29, 2022



PUBLIC UTILITIES COMMISSION OF SRI LANKA

Daily Generation Mix in MWh



Total Generation **41,392 MWh**

Note: Above data is excluding contribution from Roof Top Solar, 1MW Solar and certain Mini Hydro plants

Cumulative Dispatch

Note: Following data is Excluding contribution from Roof Top Solar, 1MW solar and Mini Hydro plants

For Current Month

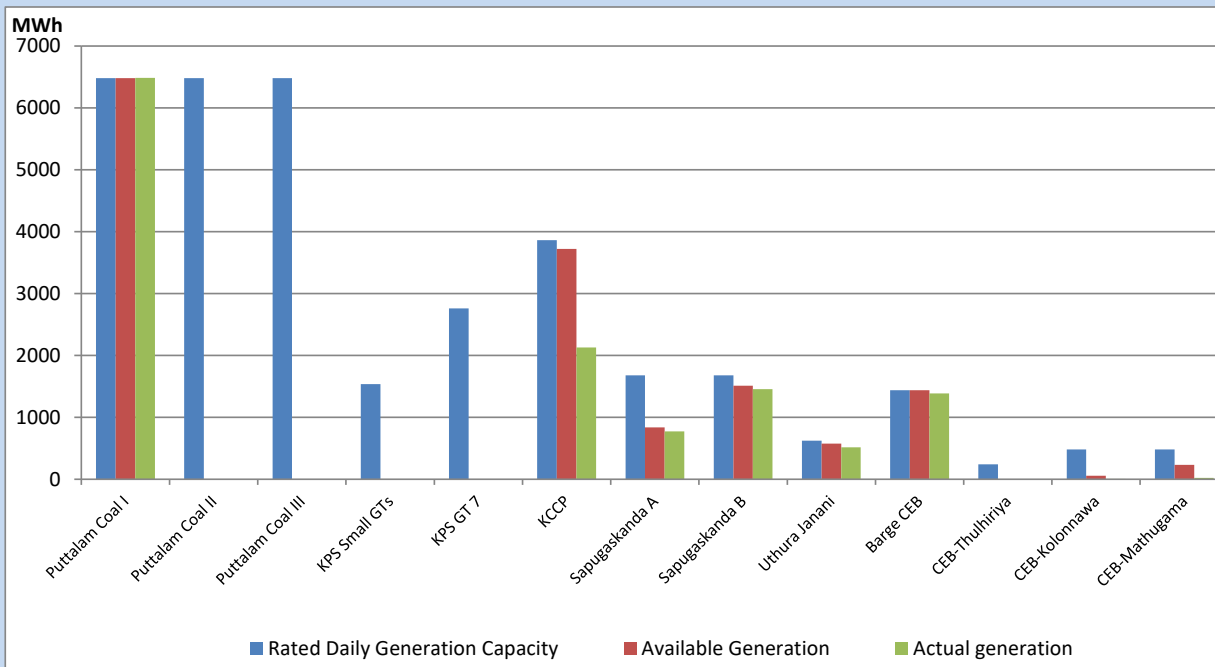
Category	Dispatch (GWh)	Percentage
CEB Hydro	550.68	48.12%
CEB Thermal Oil	60.81	5.31%
CEB Coal	321.60	28.10%
IPP Thermal	43.11	3.77%
SPP Wind	47.60	4.16%
CEB Wind	57.60	5.03%
SPP Solar	8.84	0.77%
SPP Solid Waste	5.56	0.49%
Mini Hydro	48.69	4.25%
Total	1,144.49	

For Current Year

Category	Dispatch (GWh)	Percentage
CEB Hydro	3,684.4	33.41%
CEB Thermal Oil	1,173.2	10.64%
CEB Coal	4,034.7	36.58%
IPP Thermal	1,070.0	9.70%
SPP Wind	278.4	2.52%
CEB Wind	303.7	2.75%
SPP Solar	71.1	0.64%
SPP Solid Waste	54.7	0.50%
Mini Hydro	358.7	3.25%
Total	11,028.6	

CEB owned Thermal Plant Dispatch

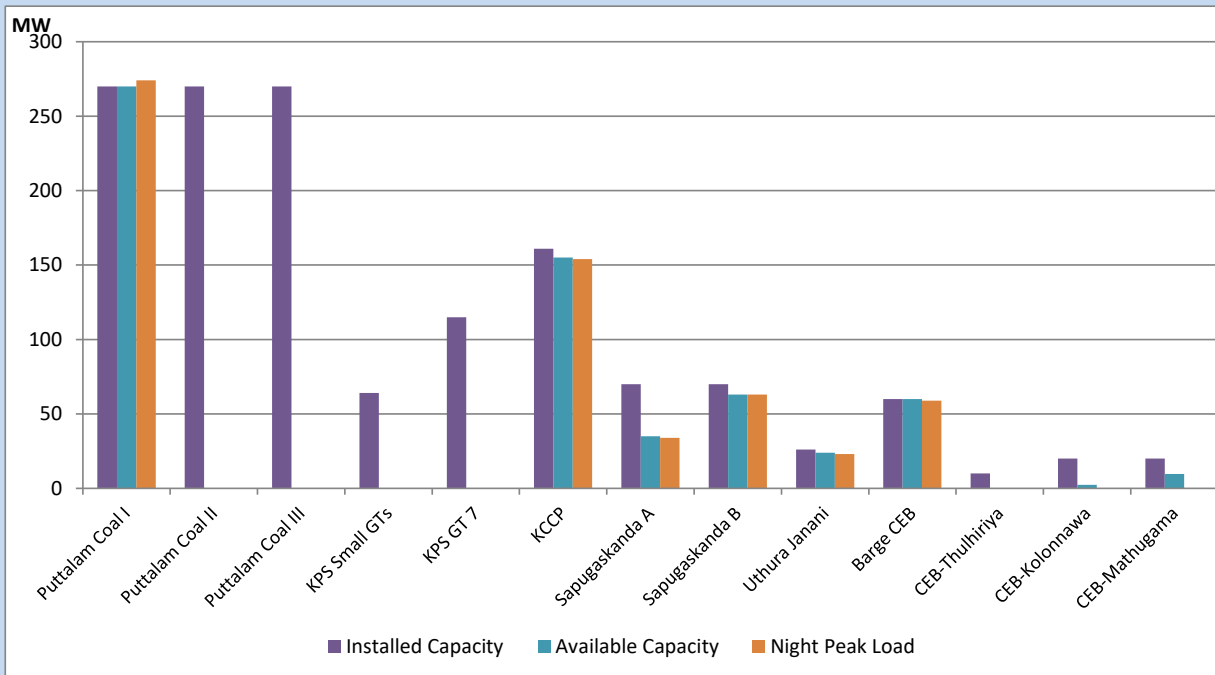
September 29, 2022



Available Generation is estimated based on plant availability at 6.00am on

September 30, 2022

CEB owned Thermal Plant Loading at the Night Peak



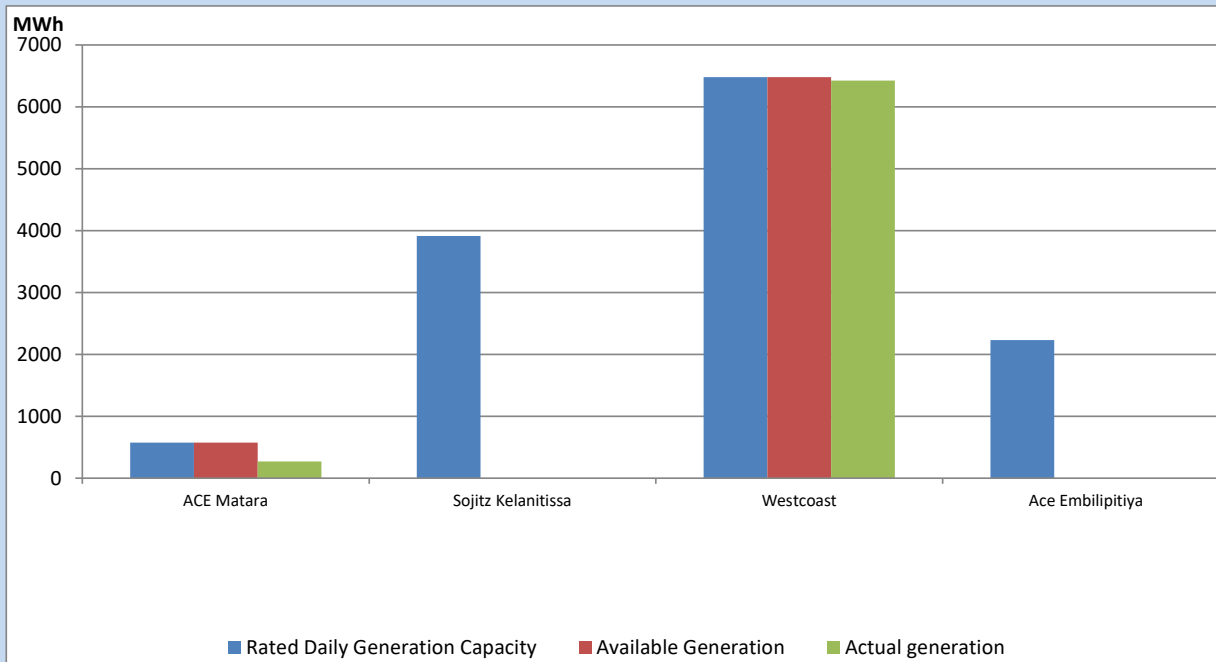
Note- Plant availability is recorded at 6.00 am on

September 30, 2022

IPP owned Thermal Plant Dispatch

September 29, 2022

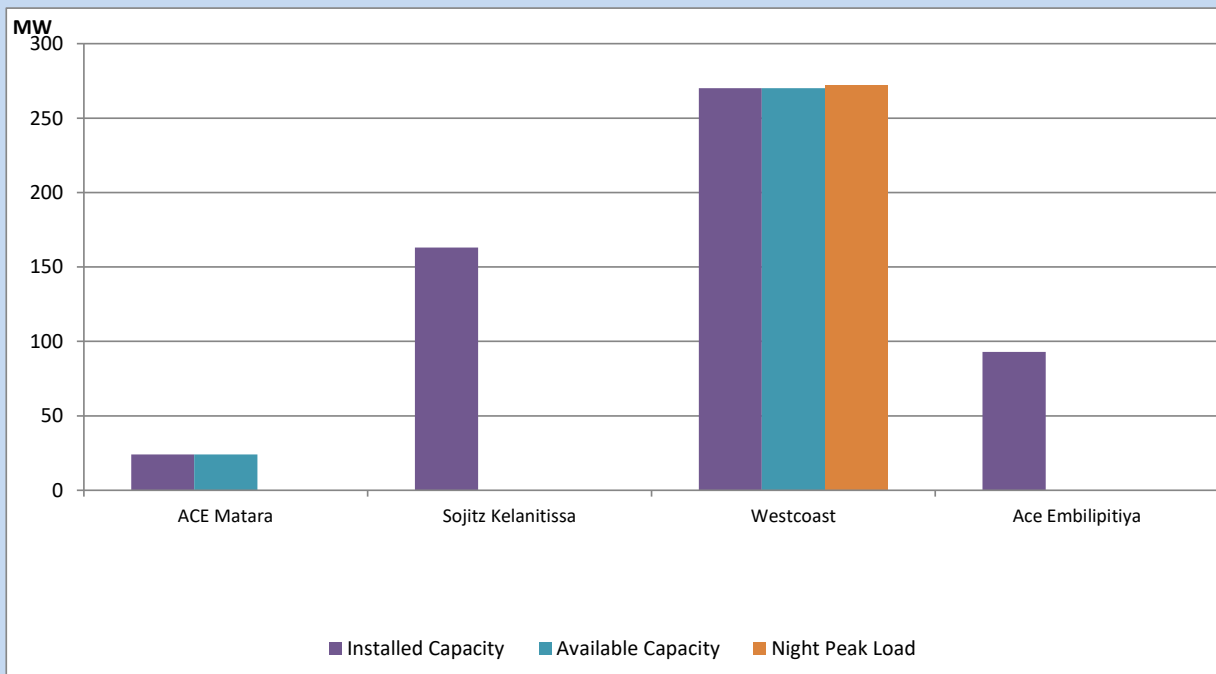
Asia Power, V Power Pallekale, Vpower Galle, V Power Horana, Vpower Hambantota, Vpower Valachchena and Altaqa Mahiyanganaya are not available due to expiration of PPAs



Available Generation is estimated based on plant availability at 6.00am on

September 30, 2022

IPP owned Thermal Plant Loading at the Night Peak

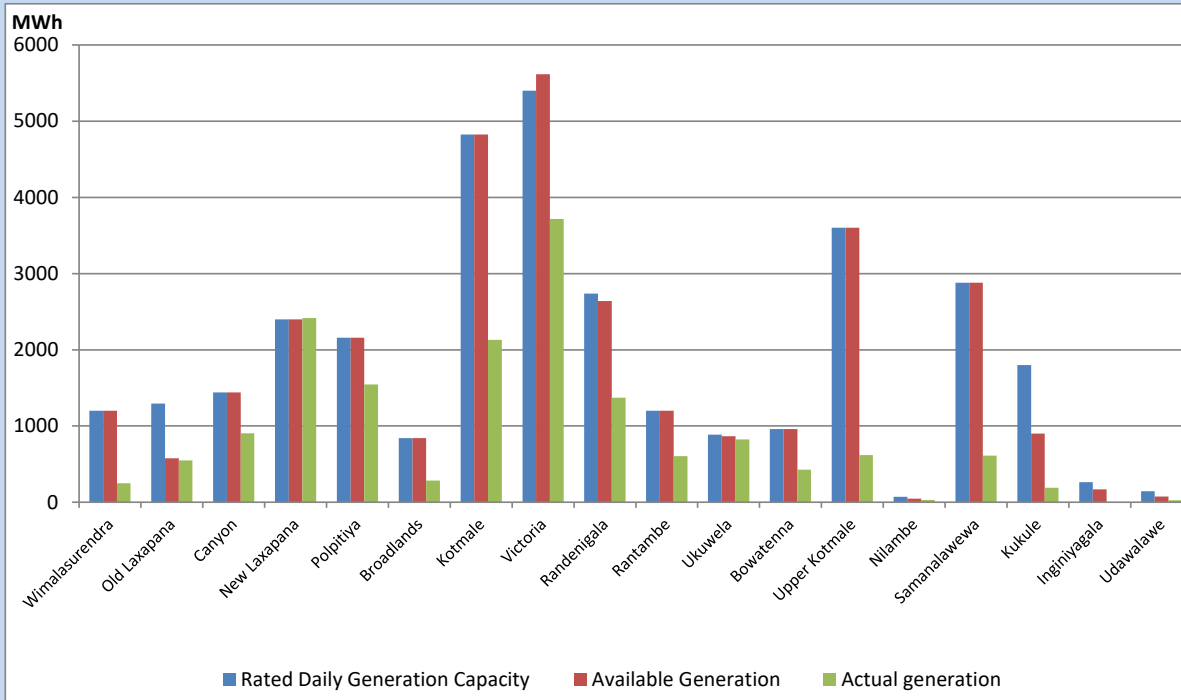


Note- Plant availability is recorded at 6.00 am on

September 30, 2022

Major Hydro Plant Dispatch

September 29, 2022

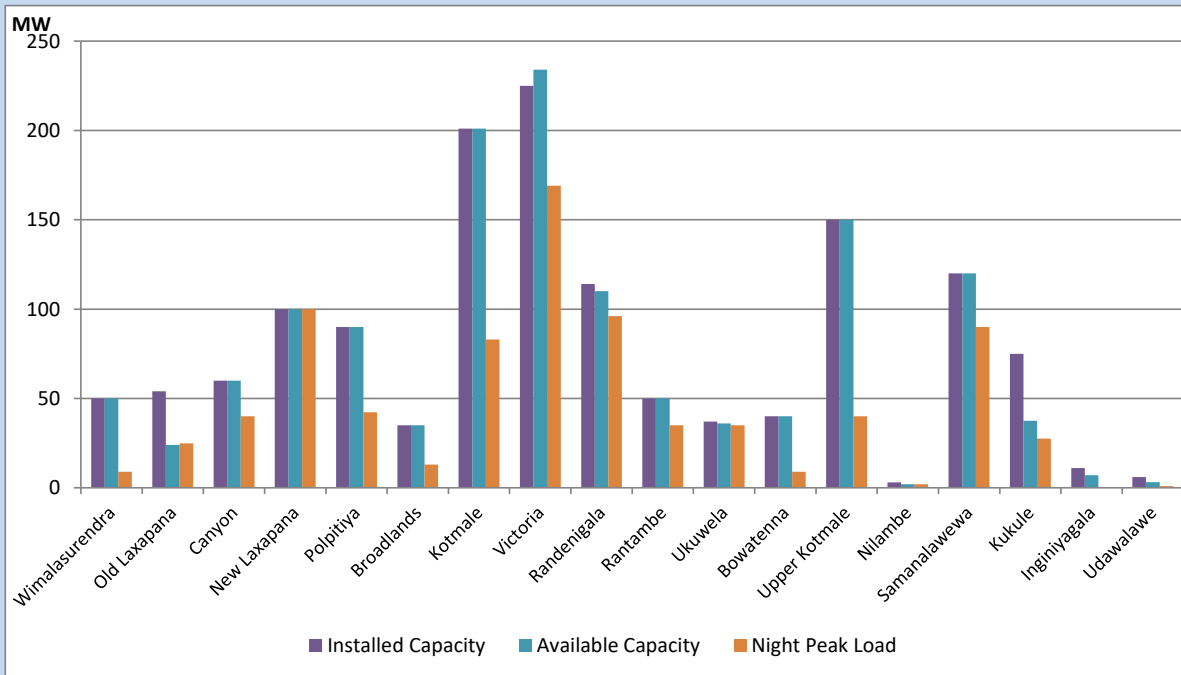


Available Generation is estimated based on plant availability at 6.00am on
Broadlands power plant is operating in the Commissioning Stage

September 30, 2022

Major Hydro Plant Loading at Night Peak

September 29, 2022



Note- Plant availability is recorded at 6.00 am on
Broadlands power plant is operating in the Commissioning Stage

September 30, 2022

Summary of Major Plant performance

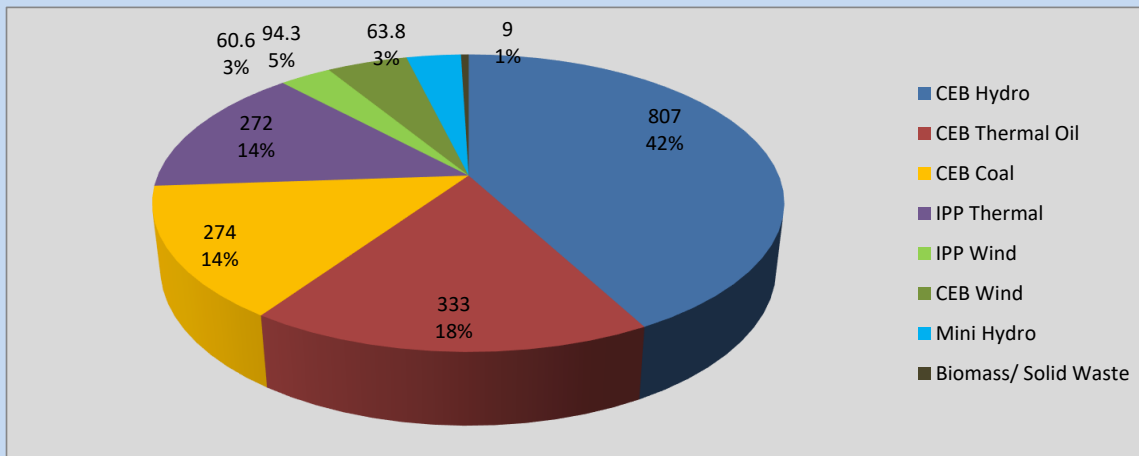
Plant	Installed Capacity	Plant Availability	Night peak Load	Plant Dispatch
	(MW)	(MW)	(MW)	(MWh)
Wimalasurendra	50	50	9	250
Old Laxapana	54	24	25	549
Canyon	60	60	40	905
New Laxapana	100	100	100	2,415
Polpitiya	90	90	42	1,545
Broadlands	35	35	13	283
Kotmale	201	201	83	2,130
Victoria	225	234	169	3,717
Randenigala	114	110	96	1,371
Rantambe	50	50	35	603
Ukuwela	37	36	35	823
Bowatenna	40	40	9	425
Upper Kotmale	150	150	40	618
Nilambe	3	2	2	28
Samanalawewa	120	120	90	613
Kukule	75	38	28	190
Inginiyagala	11	7	0	0
Udawalawe	6	3	1	25
Puttalam Coal I	270	270	274	6,487
Puttalam Coal II	270	0	0	0
Puttalam Coal III	270	0	0	0
KPS Small GTs	64	0	0	0
KPS GT 7	115	0	0	0
KCCP	161	155	154	2,128
Sapugaskanda A	70	35	34	774
Sapugaskanda B	70	63	63	1,458
Uthura Janani	26	24	23	517
Barge CEB	60	60	59	1,386
CEB-Thulhiriya	10	0	0	0
CEB-Kolonnawa	20	2	0	5
CEB-Mathugama	20	10	0	24
ACE Matara	24	24	0	269
Sojitz Kelanitissa	163	0	0	0
West Coast	270	270	272	6,423
ACE Embilipitiya	93	0	0	0
Total	3,397	2,263	1,923	41,392

Plant availability is the availability recorded at 6 am on

September 30, 2022

Contribution to the Night Peak in MW

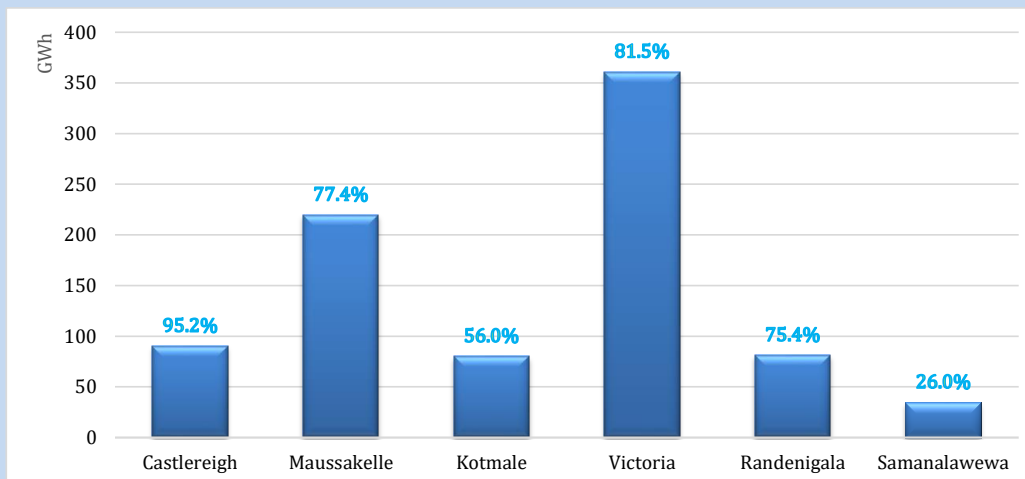
September 29, 2022



Night Peak*	1,913.3 MW
Day Peak	1,960.4 MW
Minimum Demand	1,346.5 MW

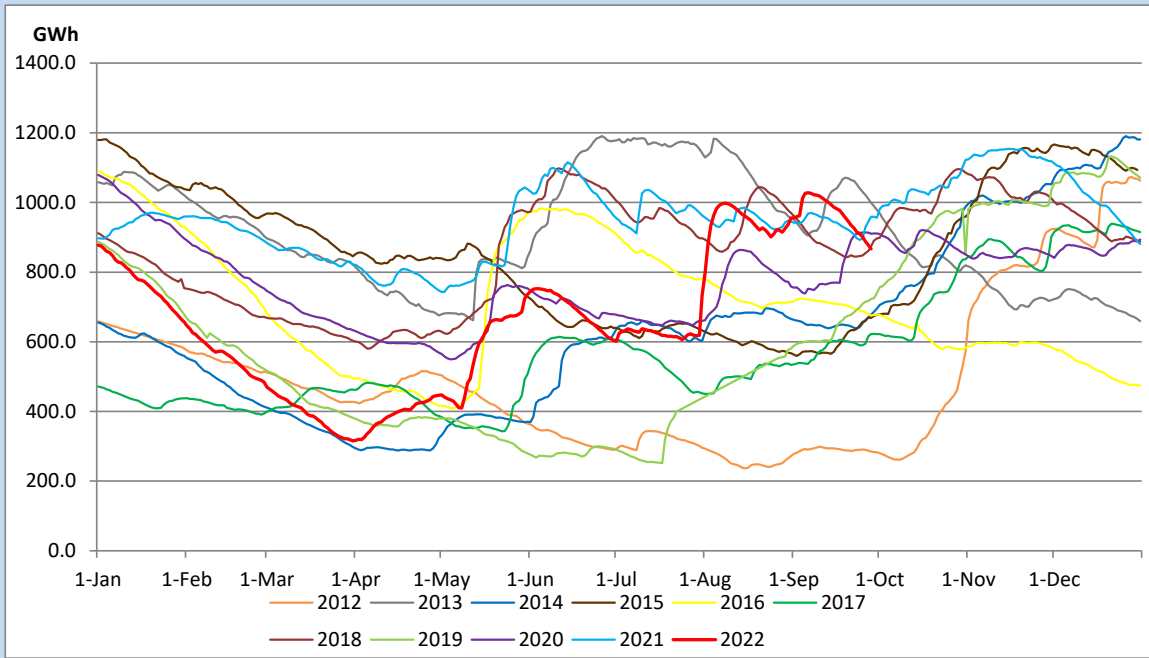
Above figures are excluding contribution from Roof Top Solar, 1MW solar, certain Wind plants and Mini Hydro plants

Reservoir Levels - as at 06.00 Hr on September 30, 2022

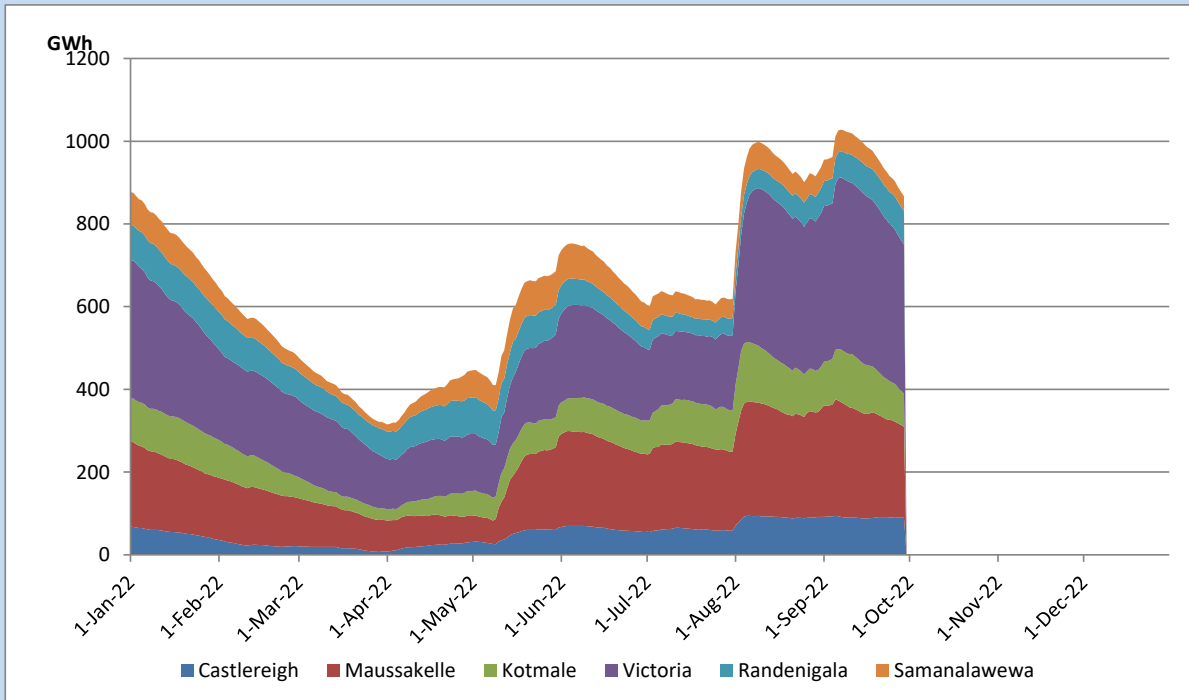


Total Reservoir Level	866.6 GWh
% of Total capacity	71.9%

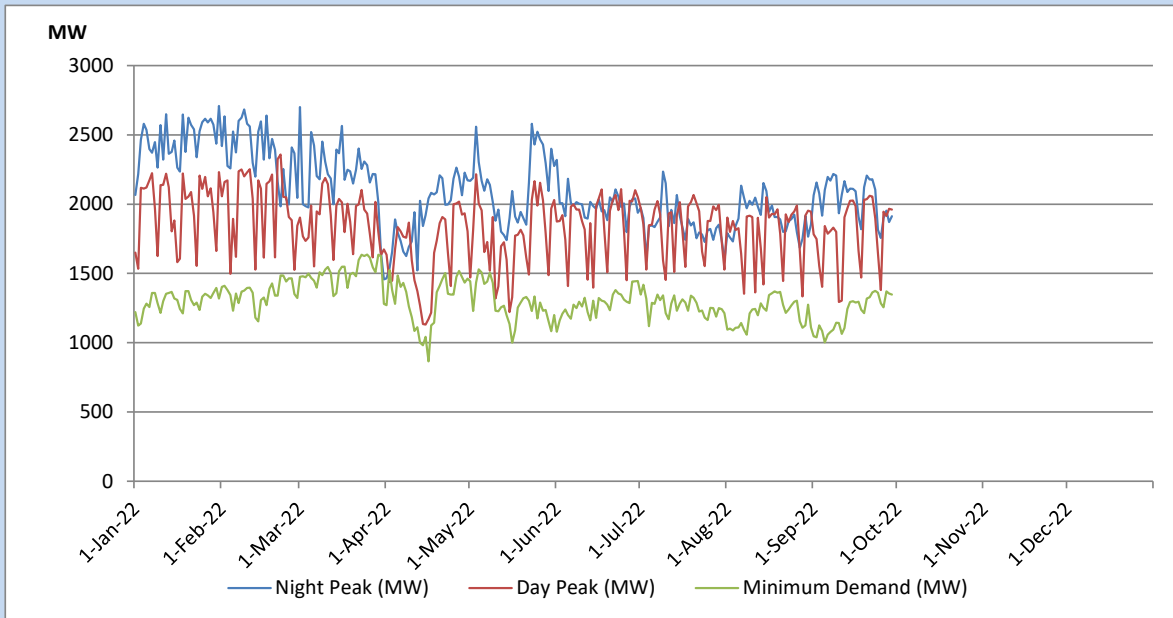
Comparison of Total Reservoir Storage Levels with Past Years



Variation of Major Hydro Reservoir Levels in the current year (GWh)



Variation of Demand during the current year

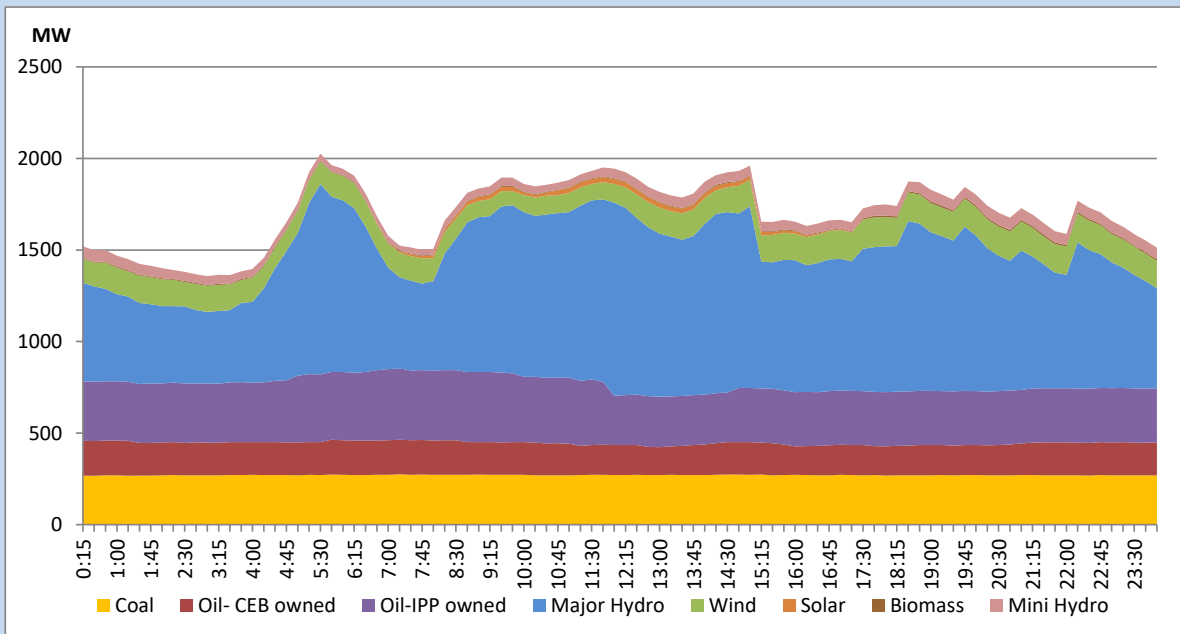


The above figures are excluding contribution from Roof Top Solar, 1MW solar, certain Wind plants and Mini Hydro plants

Daily Load Curve of the Previous day

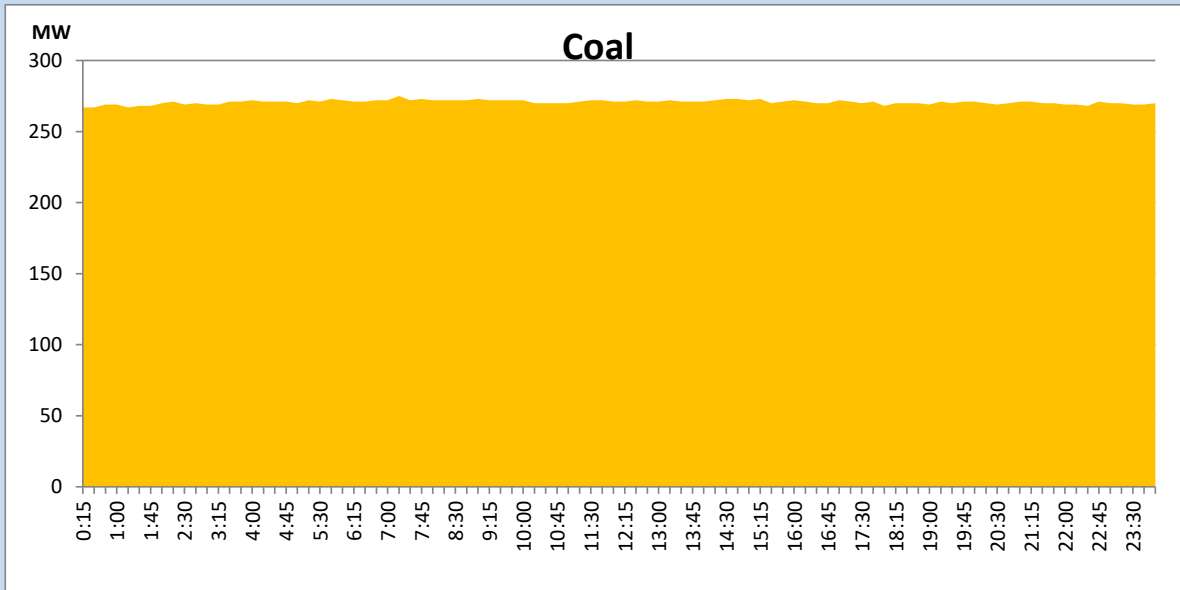
September 28, 2022

Solar and wind data is based on Telemetered Power Stations only



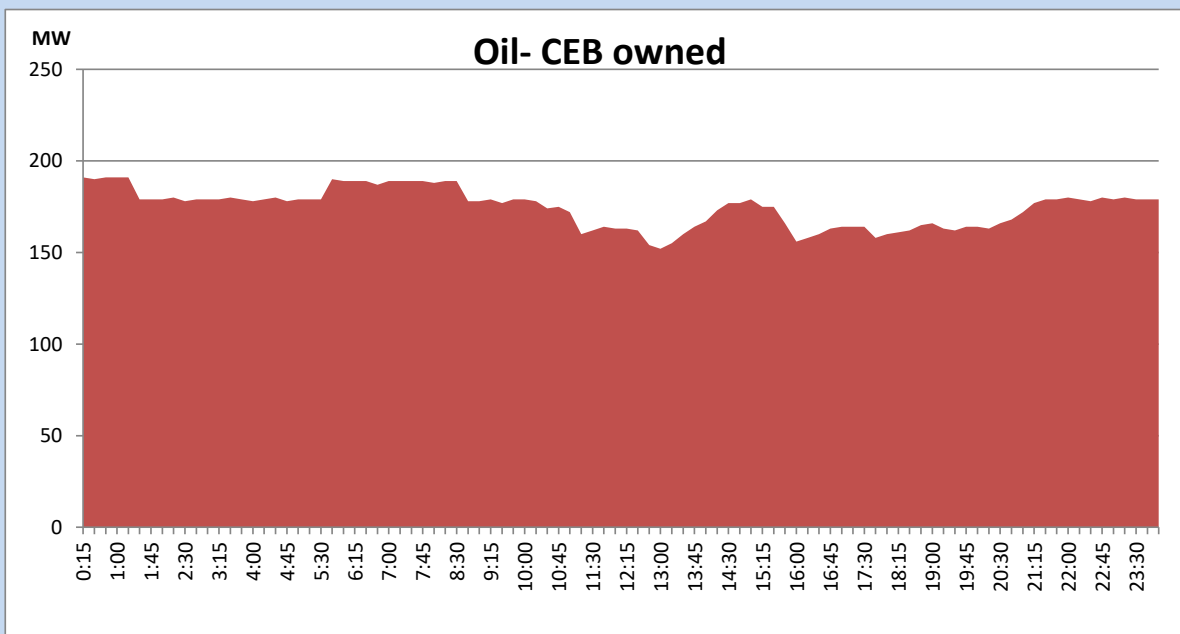
Coal Generation during the Previous day

September 28, 2022



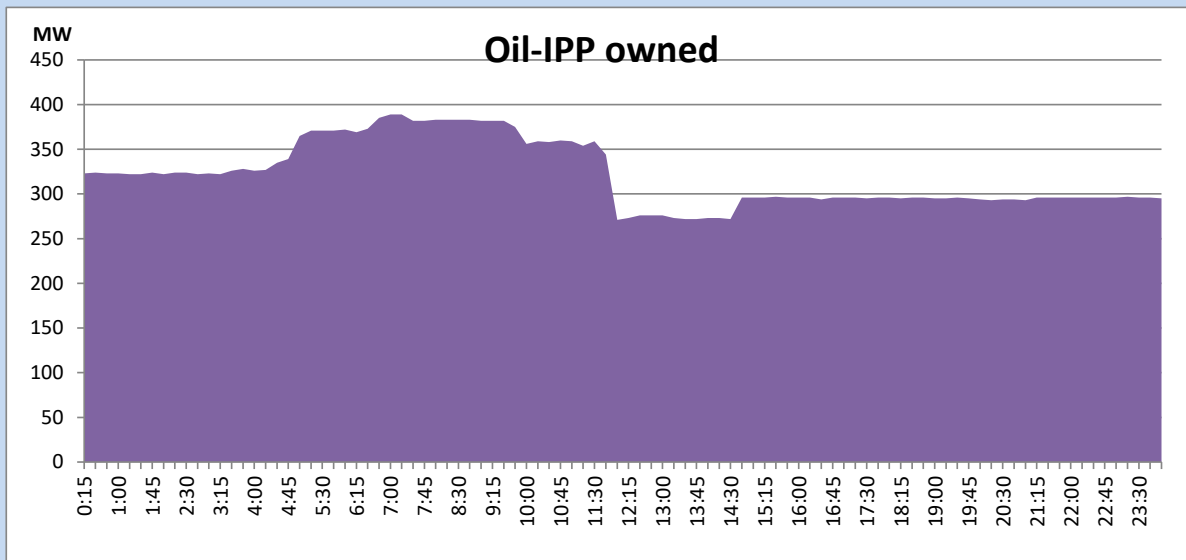
CEB Oil Plant Generation during the Previous day

September 28, 2022



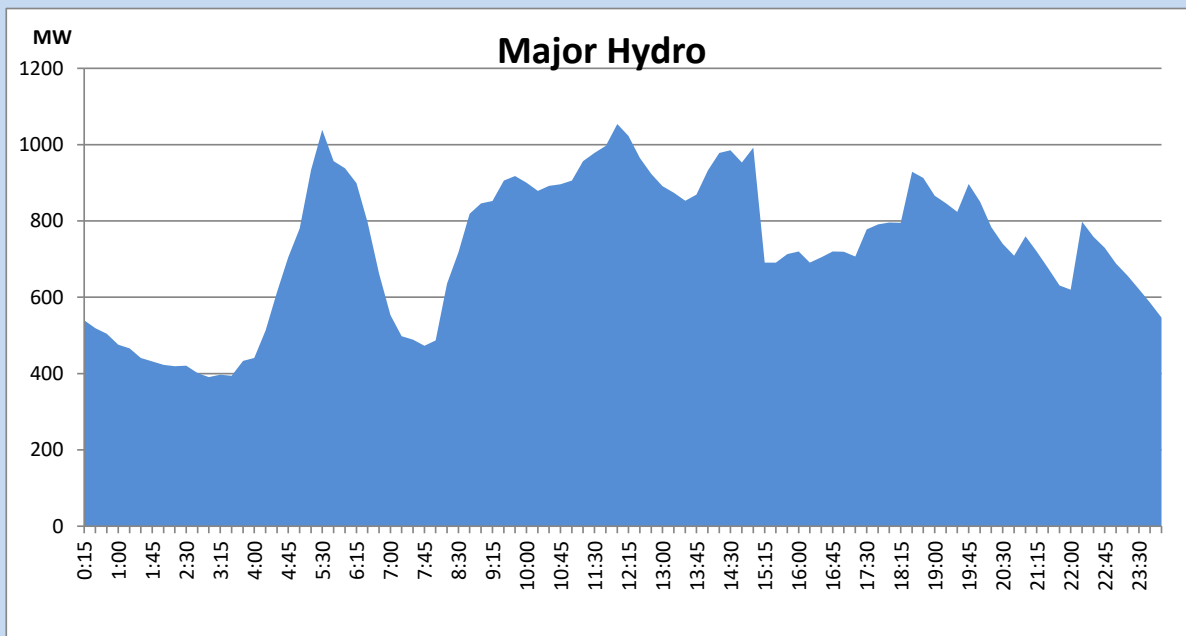
IPP Oil Plant Generation during the Previous day

September 28, 2022



Major Hydro Generation during the Previous day

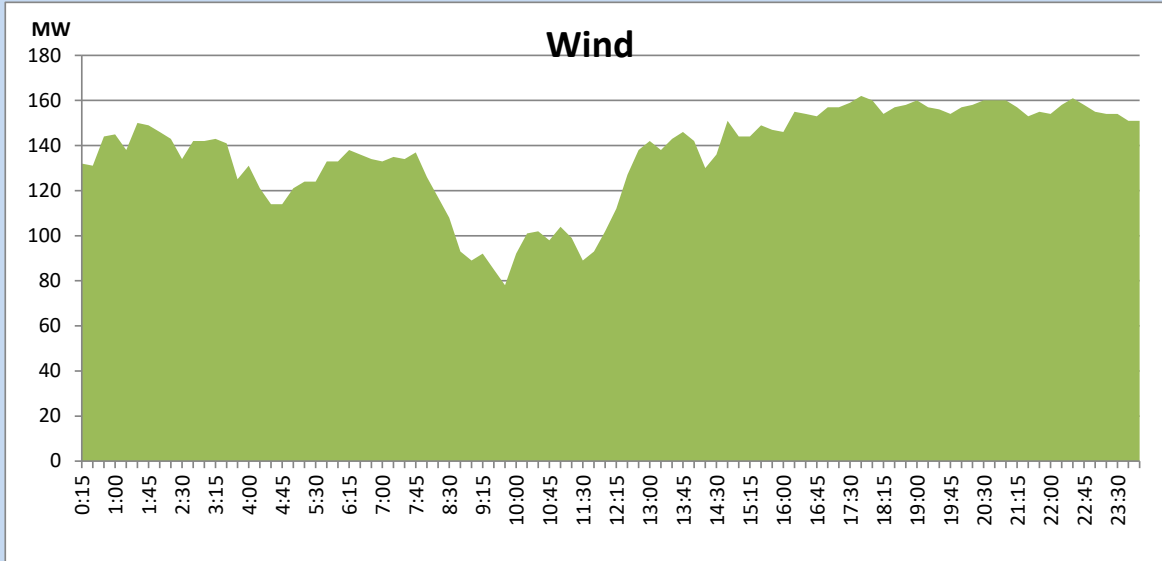
September 28, 2022



Wind Generation during the Previous day

September 28, 2022

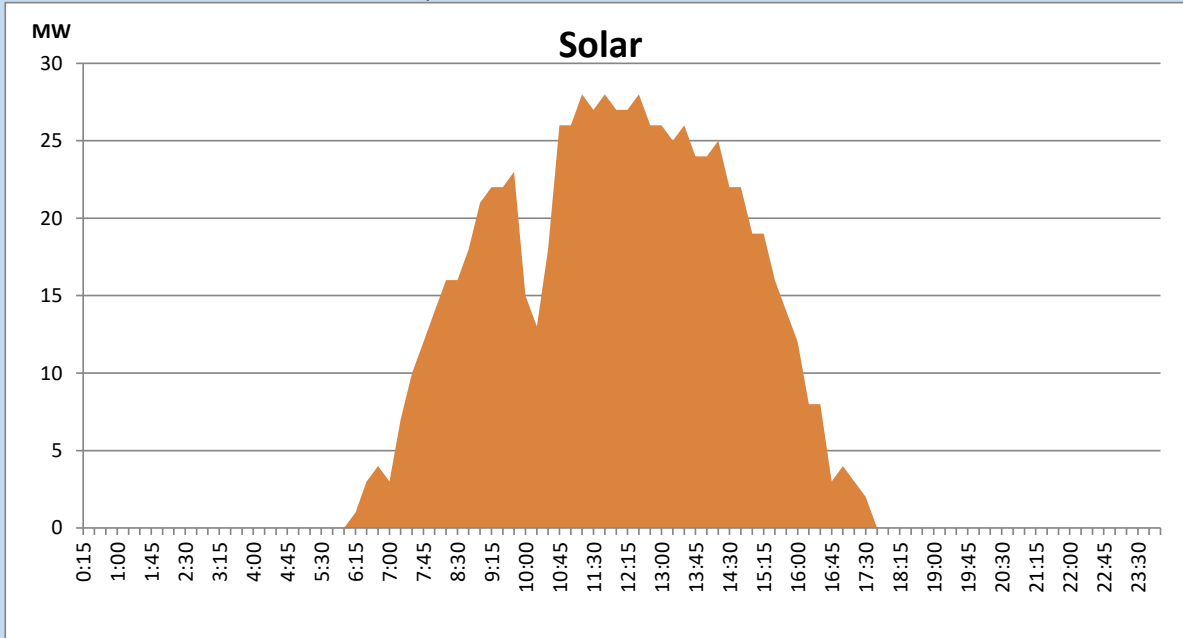
Based on Telemetered Power Stations only



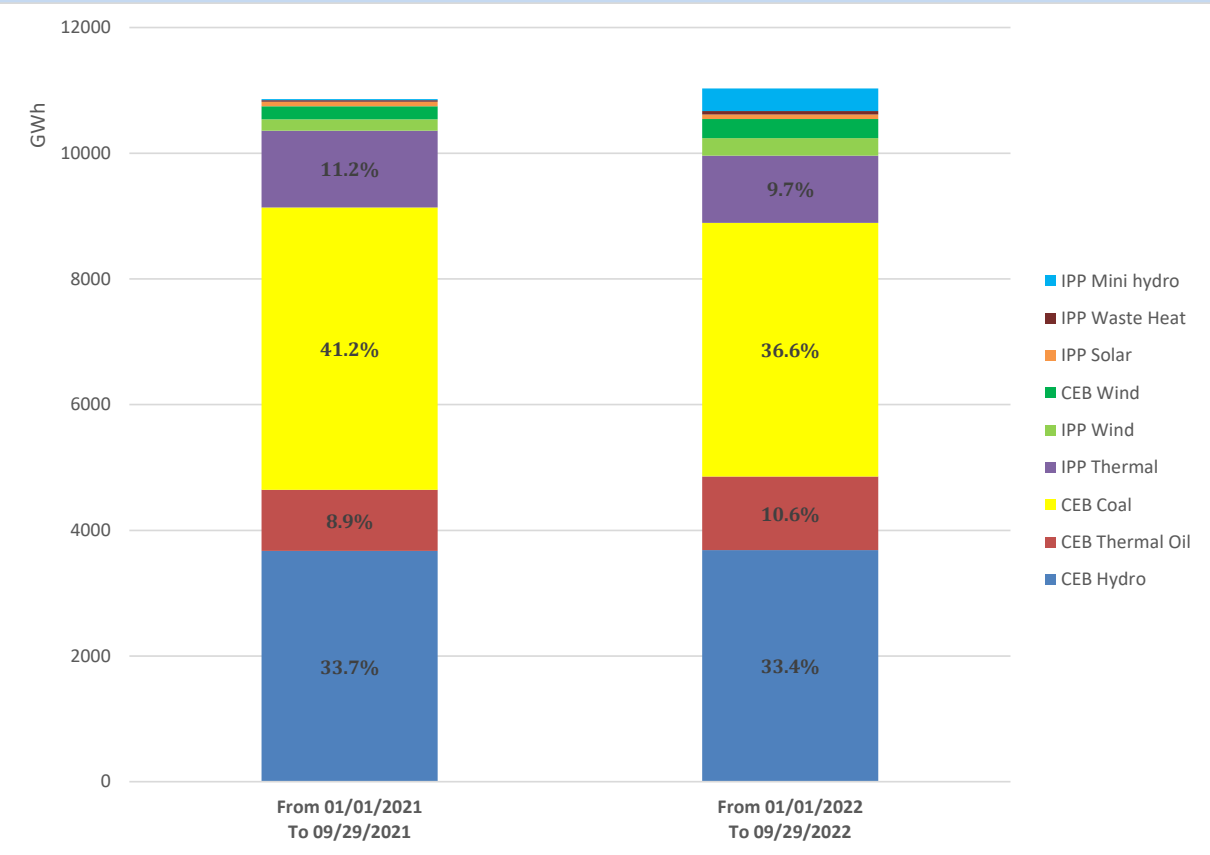
Solar Generation during the Previous day

September 28, 2022

Based on Telemetered Power Stations only



Cumulative Dispatch Comparison with Last Year



Thermal Plant Fuel types

Power Station	Primary Fuel
CEB Thermal	
Sapugaskanda 1	Heavy Fuel
Sapugaskanda 2	Heavy Fuel
Kelanitissa Small Gas Turbines	Auto Diesel
GT 7 - Kelanitissa	Auto Diesel
Kelanitissa CCY	Naphtha or Diesel
Lakvijaya 1	Coal
Lakvijaya 2	Coal
Lakvijaya 3	Coal
Uthuru Janani	Heavy Fuel
Barge CEB	Heavy Fuel

Power Station	Primary Fuel
Private Thermal	
Sojitz - Kelanitissa	Auto Diesel
West Coast	Auto Diesel / Heavy Fuel
ACE Matara	Heavy Fuel
ACE Embilipitiya	Heavy Fuel

Major Incidents during the day -as reported by CEB morning of

September 30, 2022

1) Rotational manual load shedding was carried out from 05:30 hrs to 08:30 hrs and 15:00hrs to 22:00hrs.