

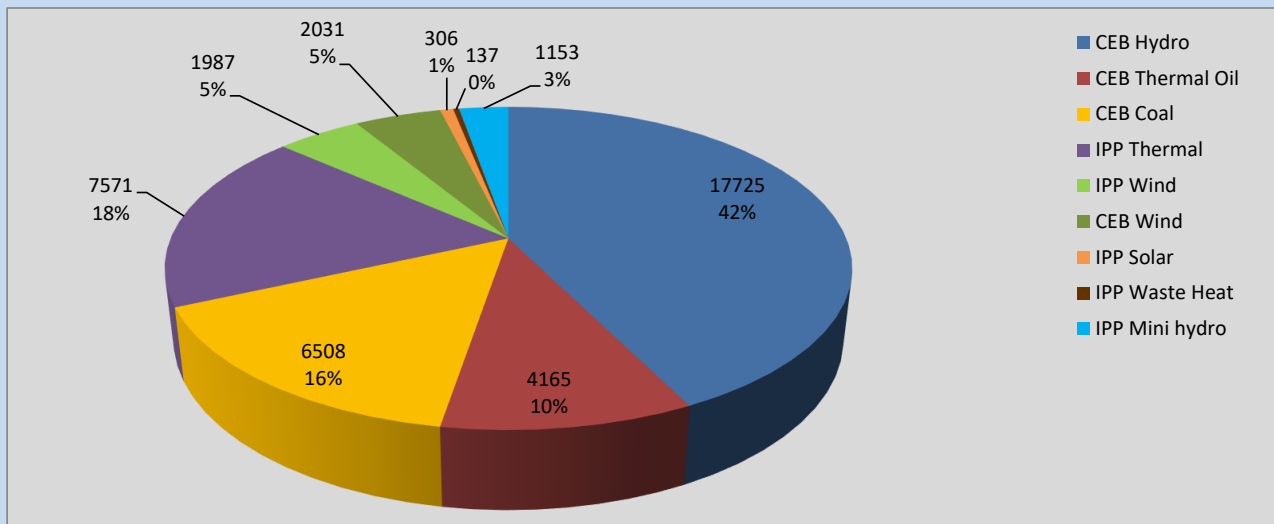
Generation and Reservoirs Statistics

September 28, 2022



PUBLIC UTILITIES COMMISSION OF SRI LANKA

Daily Generation Mix in MWh



Total Generation **41,583 MWh**

Note: Above data is excluding contribution from Roof Top Solar, 1MW Solar and certain Mini Hydro plants

Cumulative Dispatch

Note: Following data is Excluding contribution from Roof Top Solar, 1MW solar and Mini Hydro plants

For Current Month

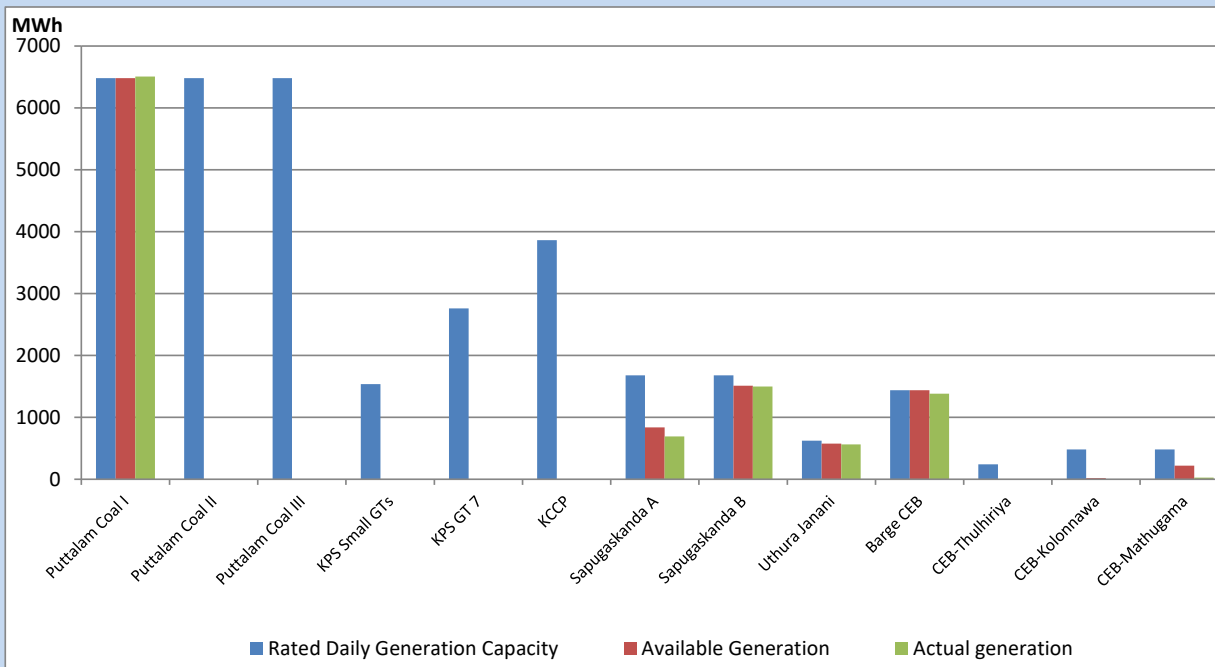
Category	Dispatch (GWh)	Percentage
CEB Hydro	534.19	48.43%
CEB Thermal Oil	54.52	4.94%
CEB Coal	315.11	28.57%
IPP Thermal	36.42	3.30%
SPP Wind	45.72	4.14%
CEB Wind	55.79	5.06%
SPP Solar	8.51	0.77%
SPP Solid Waste	5.42	0.49%
Mini Hydro	47.42	4.30%
Total	1,103.10	

For Current Year

Category	Dispatch (GWh)	Percentage
CEB Hydro	3,667.9	33.38%
CEB Thermal Oil	1,166.9	10.62%
CEB Coal	4,028.2	36.66%
IPP Thermal	1,063.3	9.68%
SPP Wind	276.5	2.52%
CEB Wind	301.9	2.75%
SPP Solar	70.8	0.64%
SPP Solid Waste	54.6	0.50%
Mini Hydro	357.4	3.25%
Total	10,987.2	

CEB owned Thermal Plant Dispatch

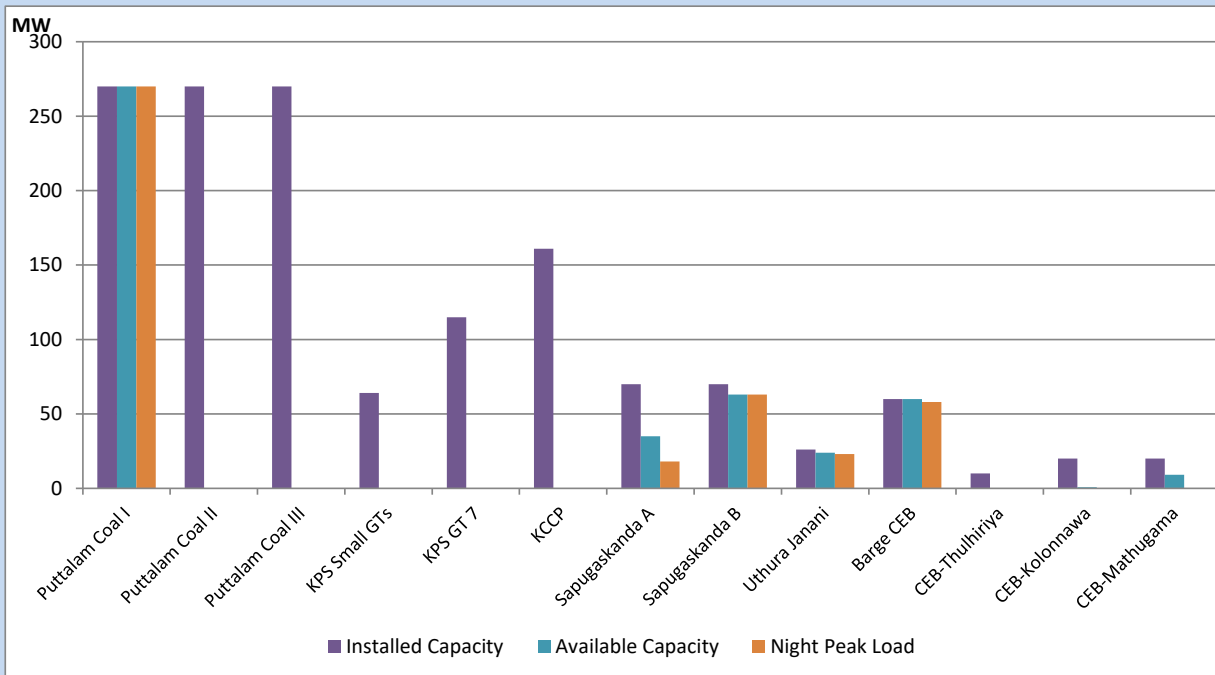
September 28, 2022



Available Generation is estimated based on plant availability at 6.00am on

September 29, 2022

CEB owned Thermal Plant Loading at the Night Peak



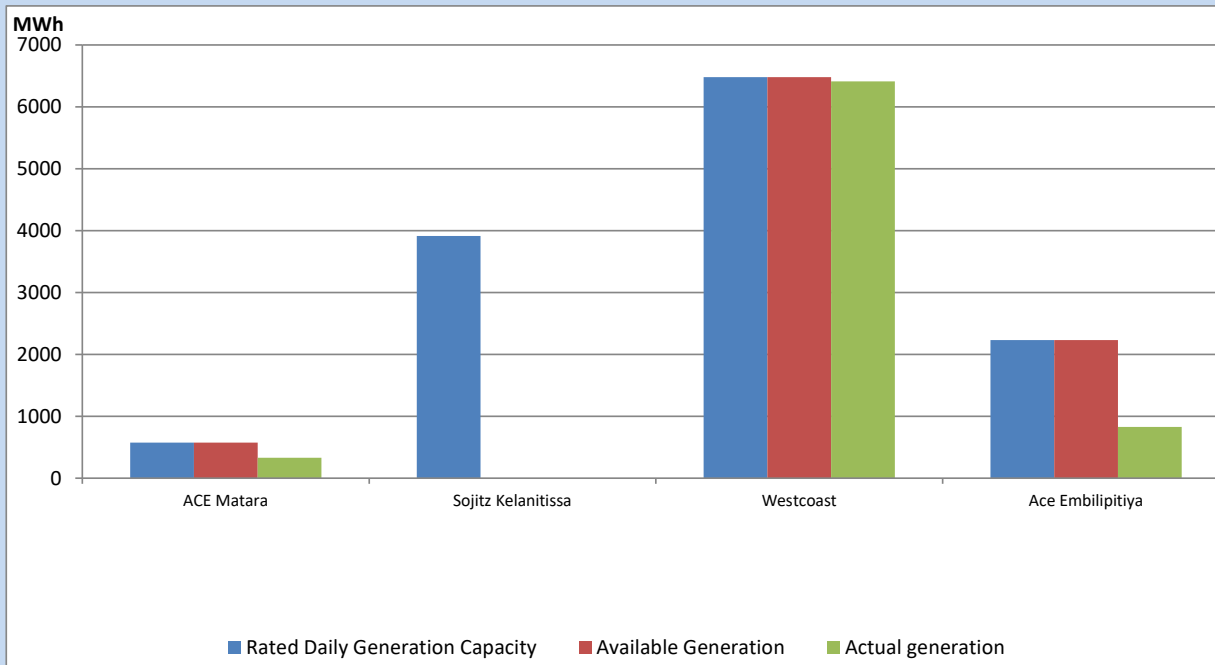
Note- Plant availability is recorded at 6.00 am on

September 29, 2022

IPP owned Thermal Plant Dispatch

September 28, 2022

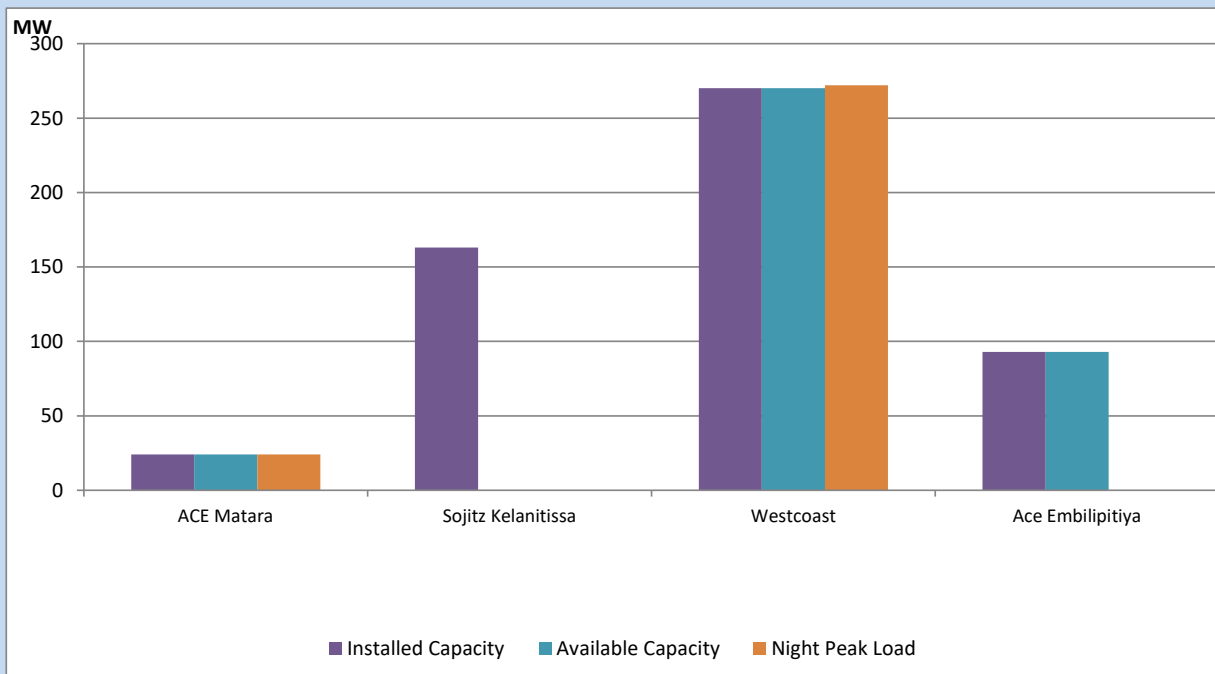
Asia Power, V Power Pallekale, Vpower Galle, V Power Horana, Vpower Hambantota, Vpower Valachchena and Altaqa Mahiyanganaya are not available due to expiration of PPAs



Available Generation is estimated based on plant availability at 6.00am on

September 29, 2022

IPP owned Thermal Plant Loading at the Night Peak

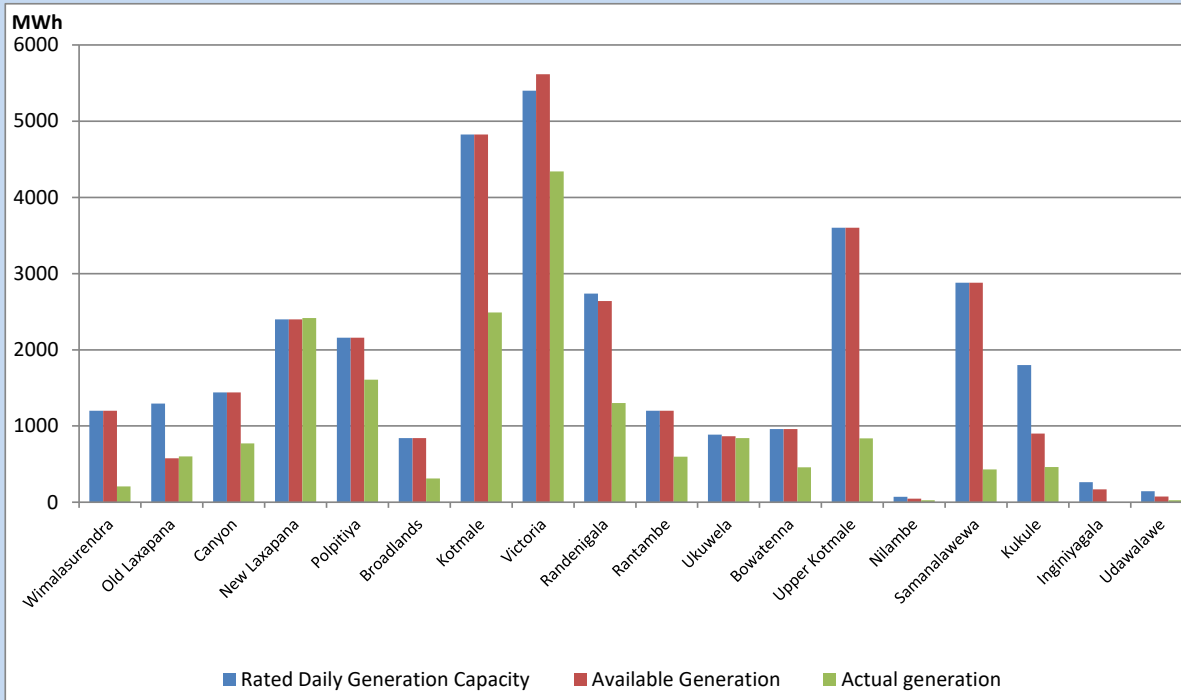


Note- Plant availability is recorded at 6.00 am on

September 29, 2022

Major Hydro Plant Dispatch

September 28, 2022

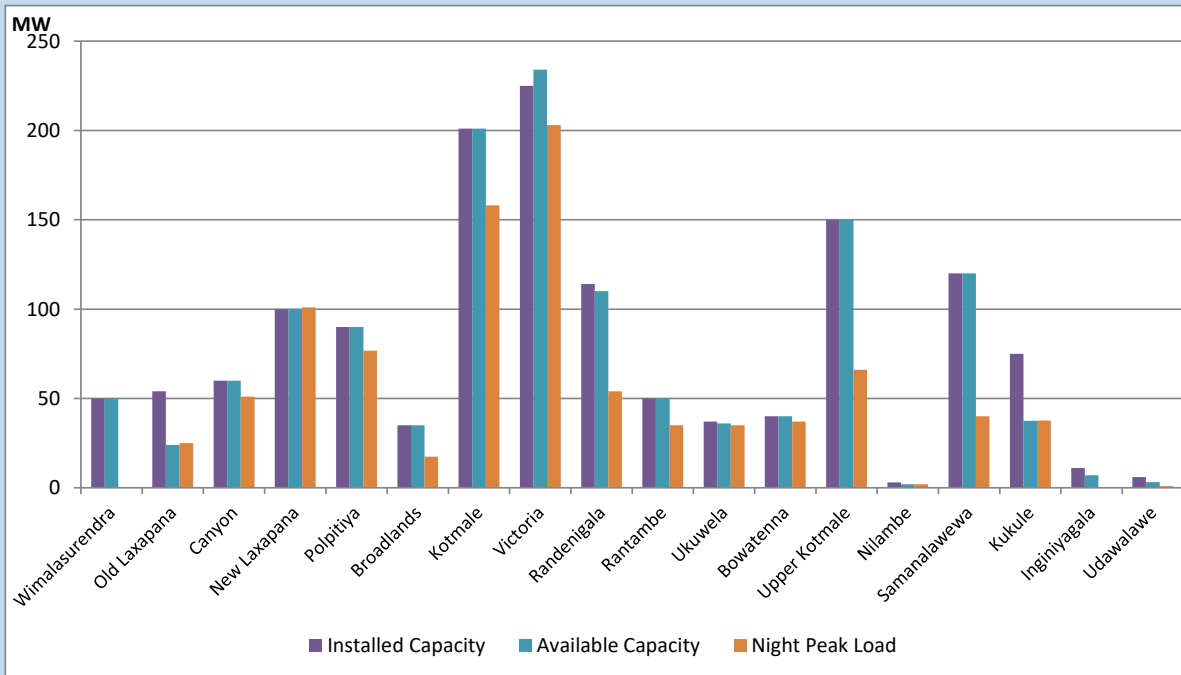


Available Generation is estimated based on plant availability at 6.00am on
Broadlands power plant is operating in the Commissioning Stage

September 29, 2022

Major Hydro Plant Loading at Night Peak

September 28, 2022



Note- Plant availability is recorded at 6.00 am on
Broadlands power plant is operating in the Commissioning Stage

September 29, 2022

Summary of Major Plant performance

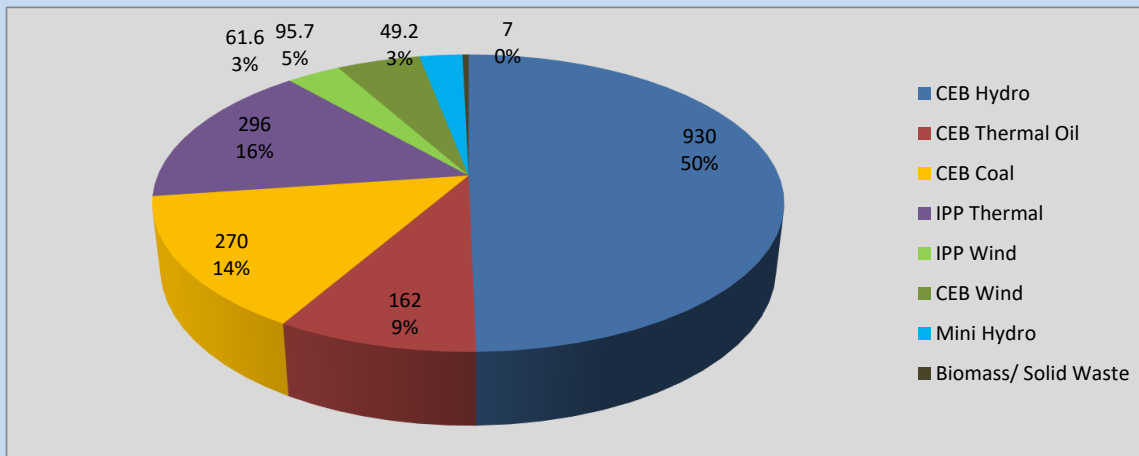
Plant	Installed Capacity	Plant Availability	Night peak Load	Plant Dispatch
	(MW)	(MW)	(MW)	(MWh)
Wimalasurendra	50	50	0	206
Old Laxapana	54	24	25	600
Canyon	60	60	51	771
New Laxapana	100	100	101	2,416
Polpitiya	90	90	77	1,607
Broadlands	35	35	17	313
Kotmale	201	201	158	2,490
Victoria	225	234	203	4,341
Randenigala	114	110	54	1,301
Rantambe	50	50	35	599
Ukuwela	37	36	35	843
Bowatenna	40	40	37	459
Upper Kotmale	150	150	66	838
Nilambe	3	2	2	26
Samanalawewa	120	120	40	430
Kukule	75	38	38	460
Inginiyagala	11	7	0	0
Udawalawe	6	3	1	25
Puttalam Coal I	270	270	270	6,508
Puttalam Coal II	270	0	0	0
Puttalam Coal III	270	0	0	0
KPS Small GTs	64	0	0	0
KPS GT 7	115	0	0	0
KCCP	161	0	0	0
Sapugaskanda A	70	35	18	690
Sapugaskanda B	70	63	63	1,499
Uthura Janani	26	24	23	562
Barge CEB	60	60	58	1,385
CEB-Thulhiriya	10	0	0	0
CEB-Kolonnawa	20	1	0	2
CEB-Mathugama	20	9	0	27
ACE Matara	24	24	24	329
Sojitz Kelanitissa	163	0	0	0
West Coast	270	270	272	6,412
ACE Embilipitiya	93	93	0	830
Total	3,397	2,199	1,881	41,583

Plant availability is the availability recorded at 6 am on

September 29, 2022

Contribution to the Night Peak in MW

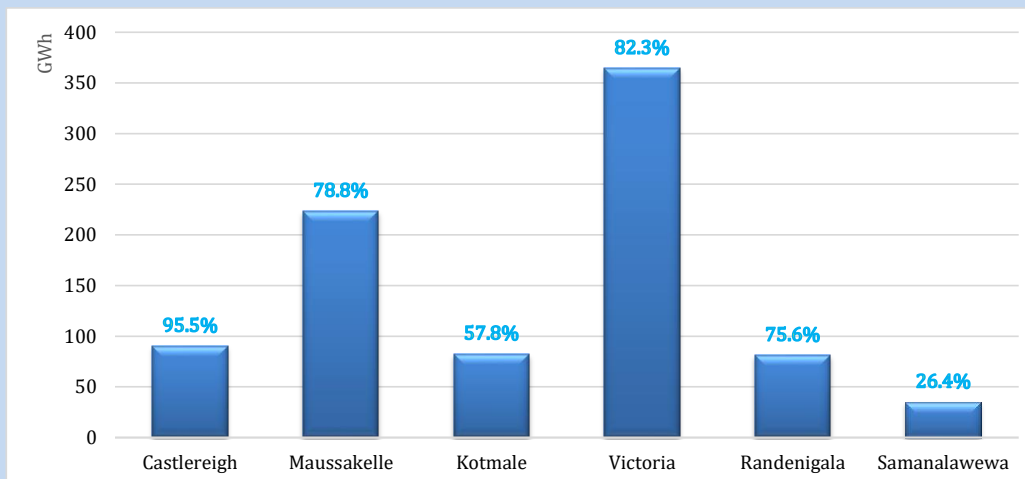
September 28, 2022



Night Peak*	1,871.3 MW
Day Peak	1,967.0 MW
Minimum Demand	1,355.6 MW

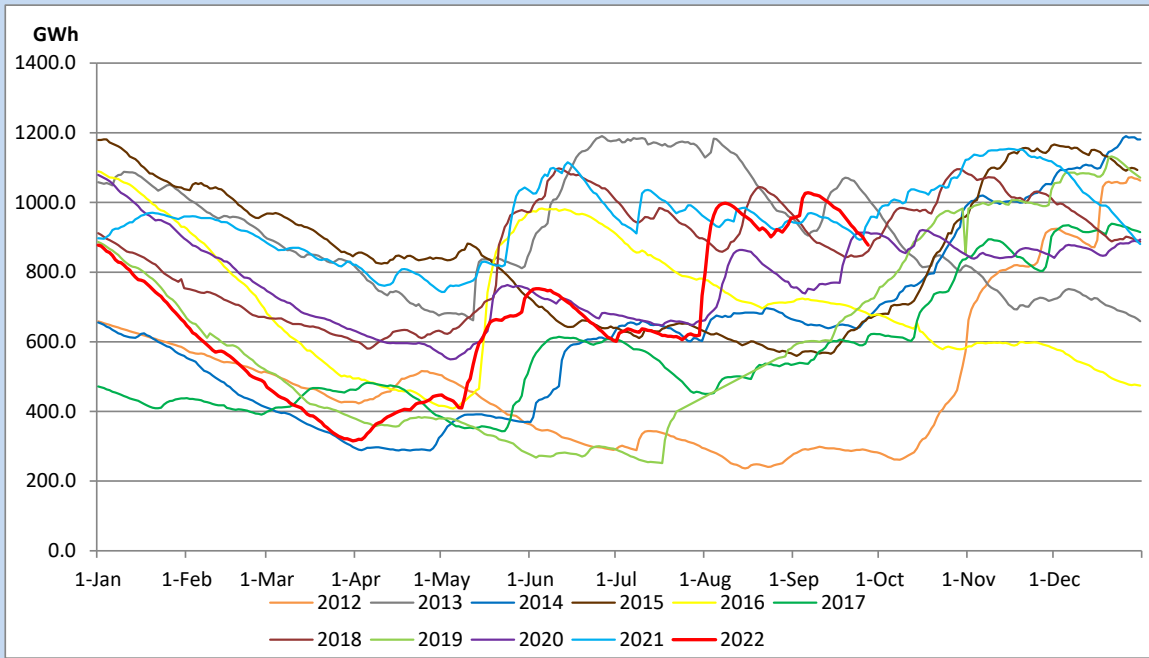
Above figures are excluding contribution from Roof Top Solar, 1MW solar, certain Wind plants and Mini Hydro plants

Reservoir Levels - as at 06.00 Hr on September 29, 2022

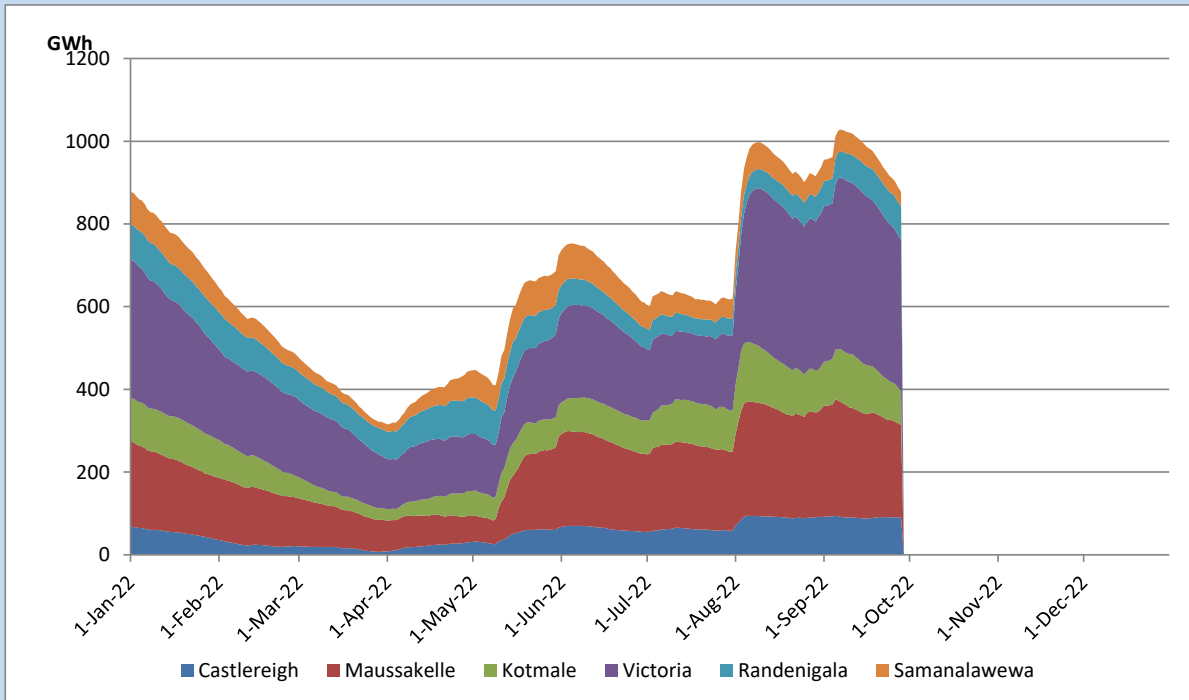


Total Reservoir Level	877.7 GWh
% of Total capacity	72.8%

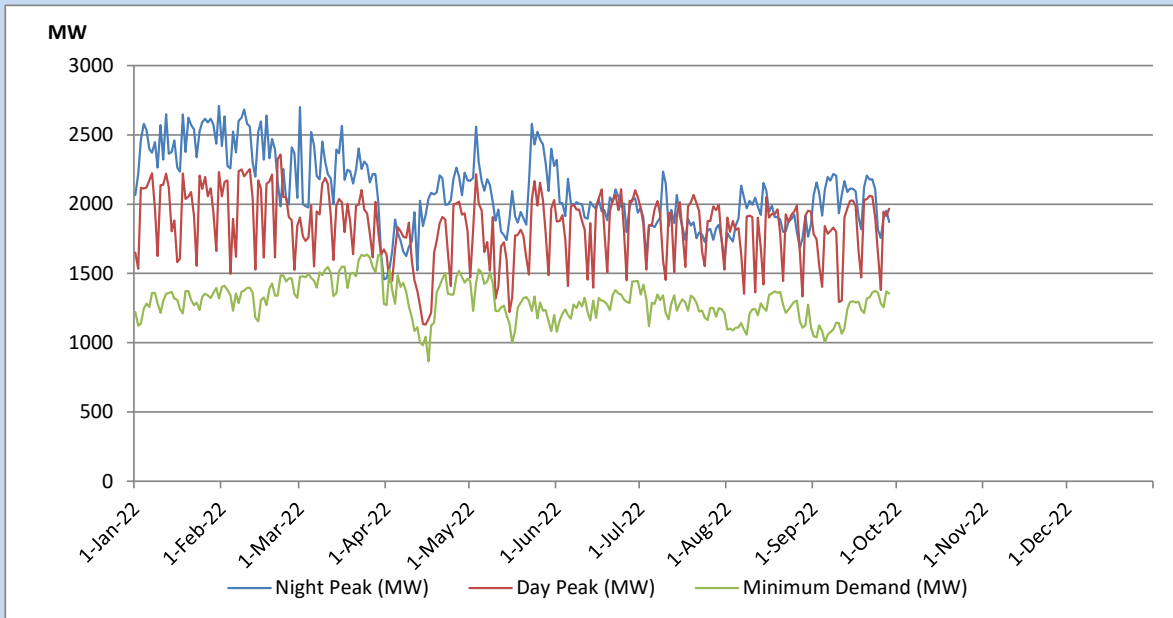
Comparison of Total Reservoir Storage Levels with Past Years



Variation of Major Hydro Reservoir Levels in the current year (GWh)



Variation of Demand during the current year

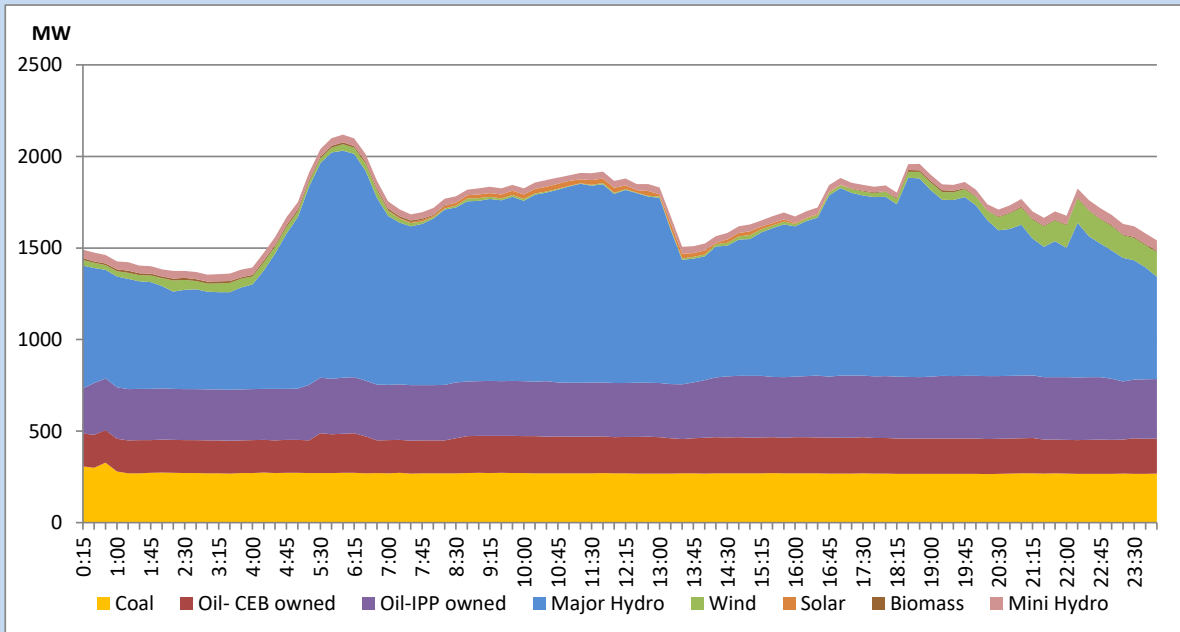


The above figures are excluding contribution from Roof Top Solar, 1MW solar, certain Wind plants and Mini Hydro plants

Daily Load Curve of the Previous day

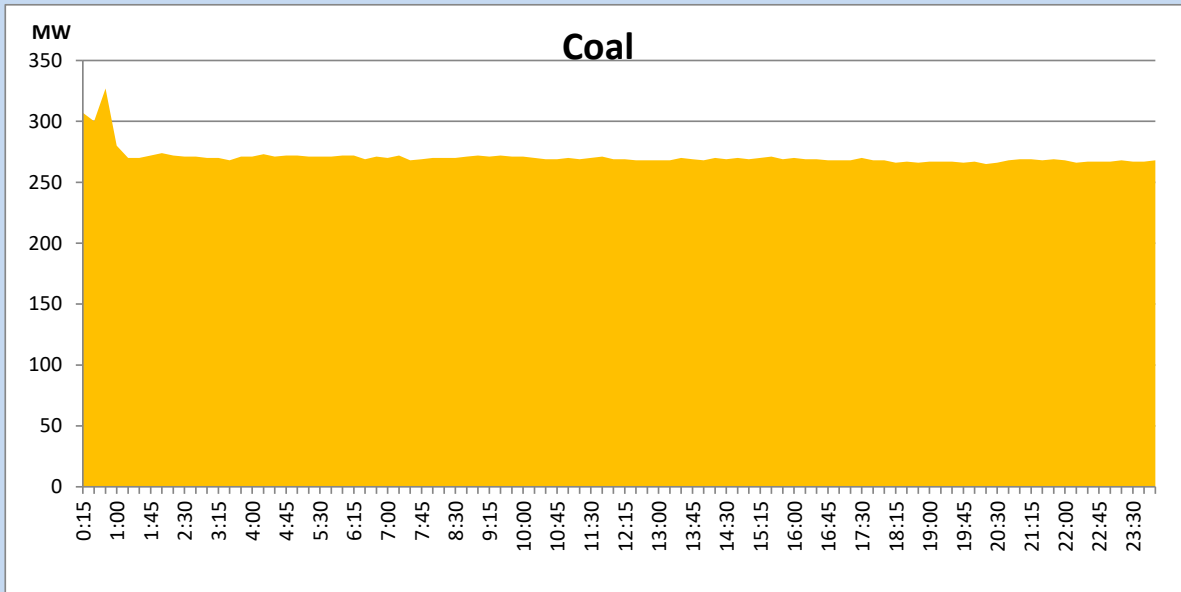
September 27, 2022

Solar and wind data is based on Telemetered Power Stations only



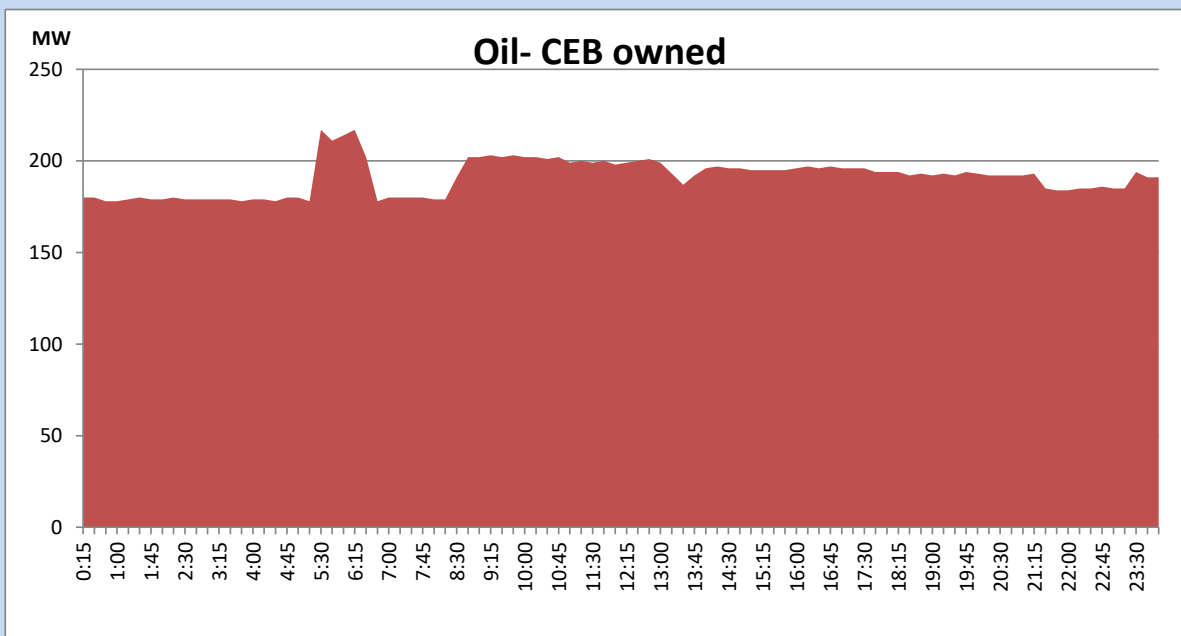
Coal Generation during the Previous day

September 27, 2022



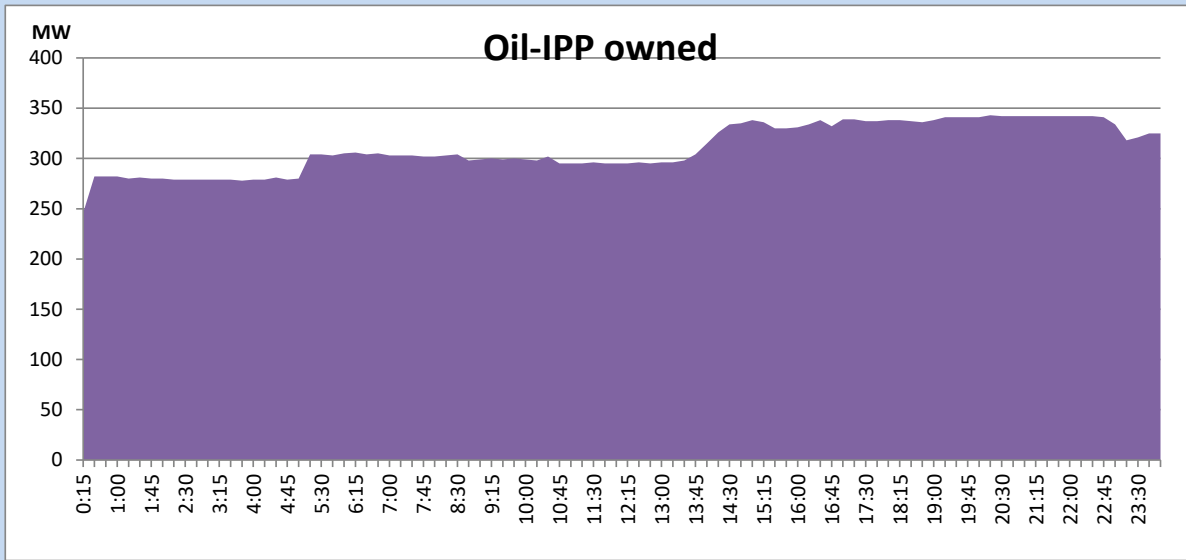
CEB Oil Plant Generation during the Previous day

September 27, 2022



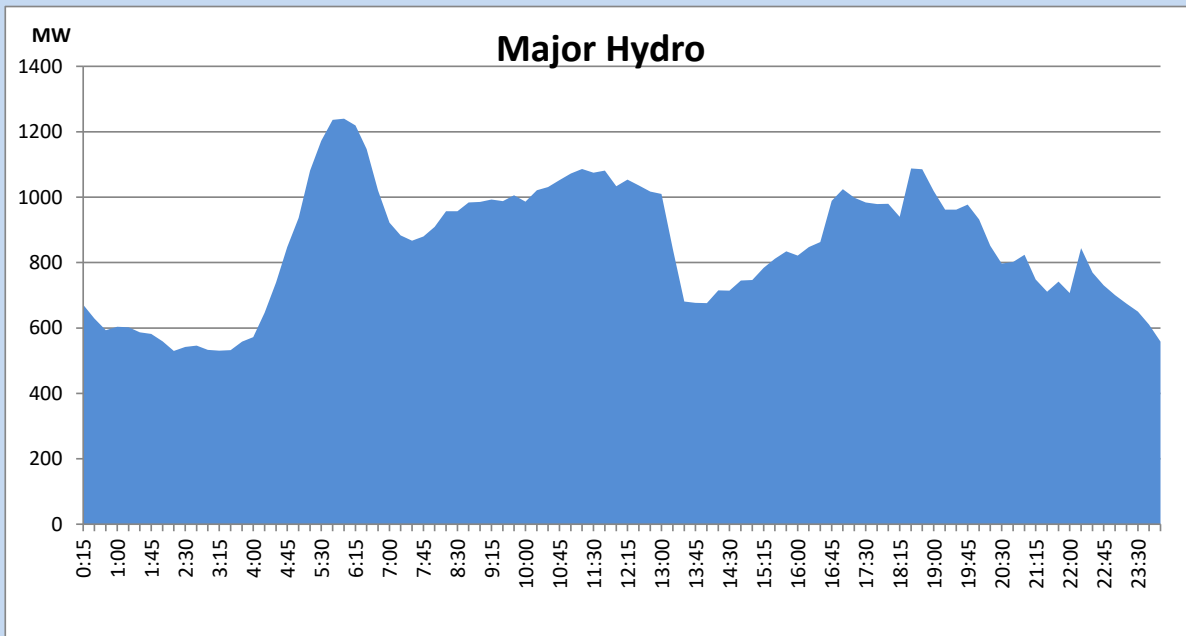
IPP Oil Plant Generation during the Previous day

September 27, 2022



Major Hydro Generation during the Previous day

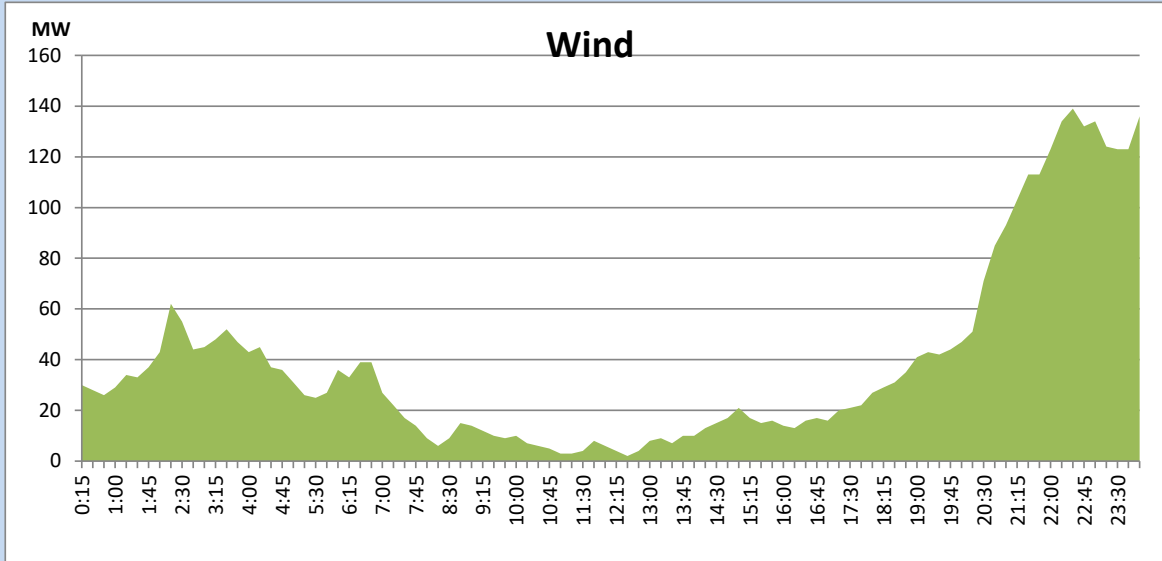
September 27, 2022



Wind Generation during the Previous day

September 27, 2022

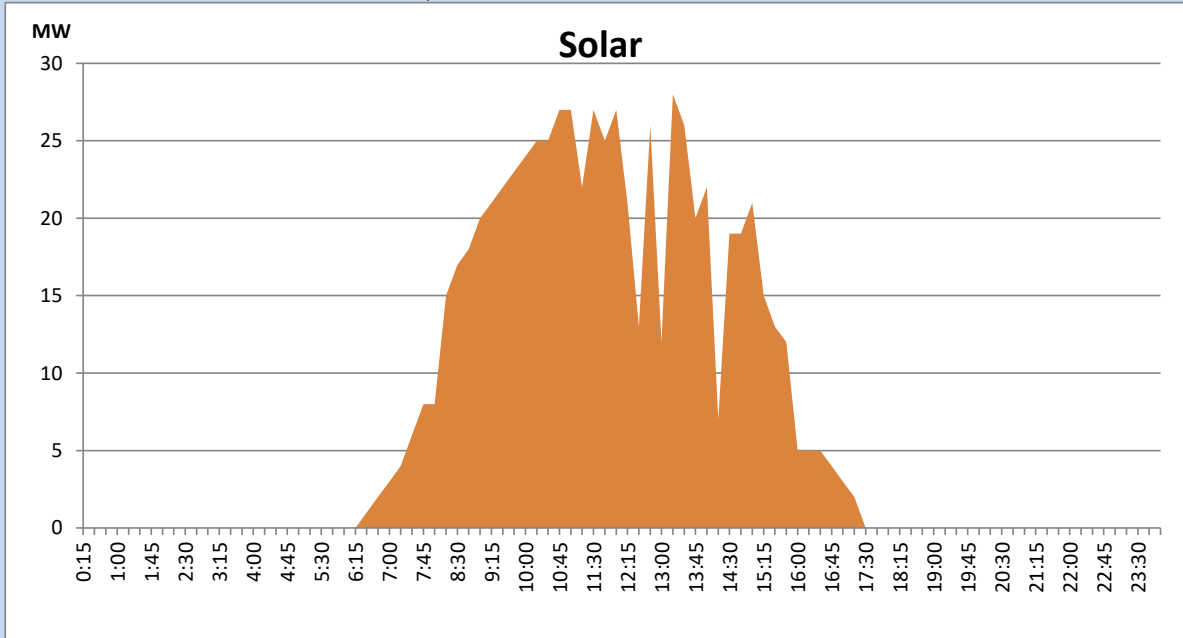
Based on Telemetered Power Stations only



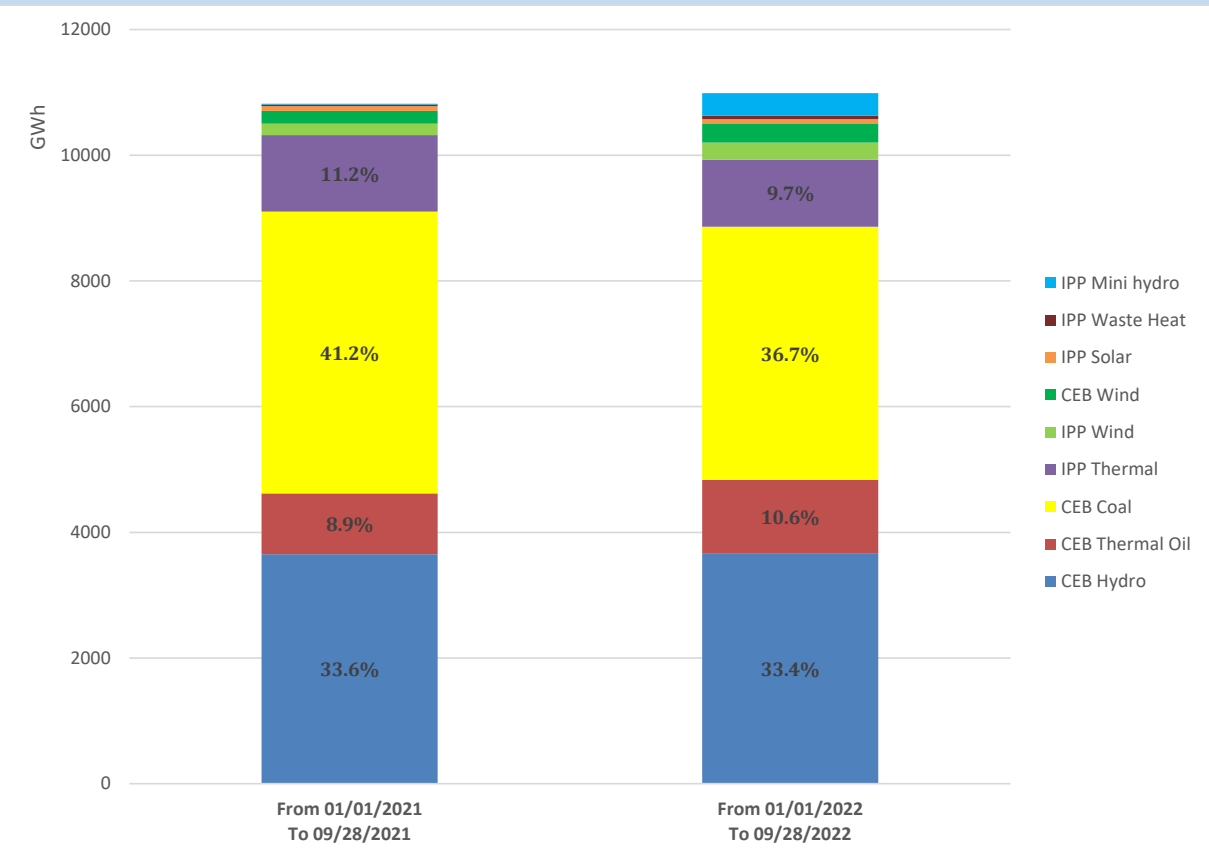
Solar Generation during the Previous day

September 27, 2022

Based on Telemetered Power Stations only



Cumulative Dispatch Comparison with Last Year



Thermal Plant Fuel types

Power Station	Primary Fuel
CEB Thermal	
Sapugaskanda 1	Heavy Fuel
Sapugaskanda 2	Heavy Fuel
Kelanitissa Small Gas Turbines	Auto Diesel
GT 7 - Kelanitissa	Auto Diesel
Kelanitissa CCY	Naphtha or Diesel
Lakvijaya 1	Coal
Lakvijaya 2	Coal
Lakvijaya 3	Coal
Uthuru Janani	Heavy Fuel
Barge CEB	Heavy Fuel

Power Station	Primary Fuel
Private Thermal	
Sojitz - Kelanitissa	Auto Diesel
West Coast	Auto Diesel / Heavy Fuel
ACE Matara	Heavy Fuel
ACE Embilipitiya	Heavy Fuel

Major Incidents during the day -as reported by CEB morning of

September 29, 2022

- 1) Rotational manual load shedding was carried out from 05:30 hrs to 08:30 hrs and 13:00hrs to 22:00hrs.
- 2) ACE Matara (24MW) made forced shutdown at 09:20 hrs due to lack of fuel and resumed generation again at 14:18 hrs with reception of fuel.
- 3) ACE Embilipitiya made forced shutdown at 12:00 hrs due end of PPA.