

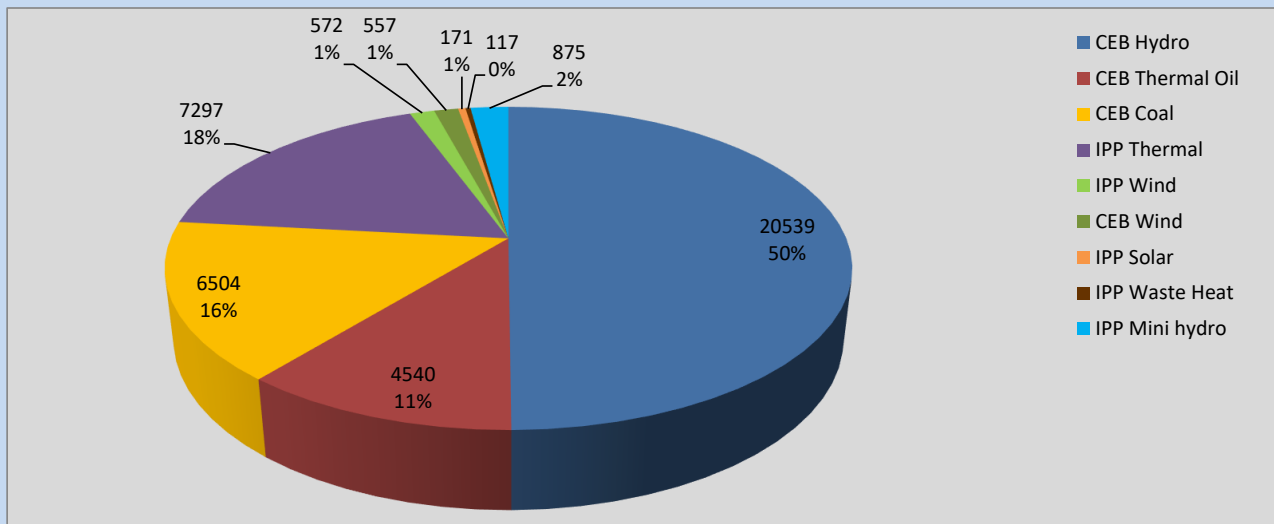
# Generation and Reservoirs Statistics

September 27, 2022



PUBLIC UTILITIES COMMISSION OF SRI LANKA

## Daily Generation Mix in MWh



**Total Generation** **41,172 MWh**

Note: Above data is excluding contribution from Roof Top Solar, 1MW Solar and certain Mini Hydro plants

## Cumulative Dispatch

Note: Following data is Excluding contribution from Roof Top Solar, 1MW solar and Mini Hydro plants

### For Current Month

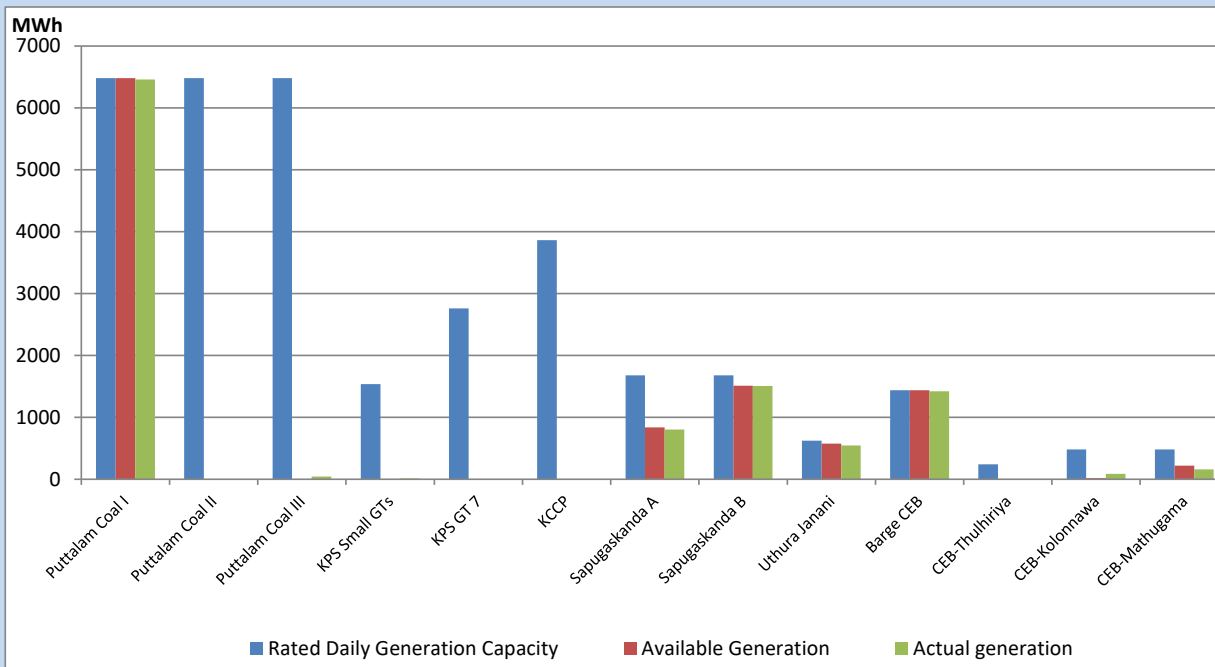
Category	Dispatch (GWh)	Percentage
CEB Hydro	516.47	48.65%
CEB Thermal Oil	50.35	4.74%
CEB Coal	308.60	29.07%
IPP Thermal	28.85	2.72%
SPP Wind	43.73	4.12%
CEB Wind	53.76	5.06%
SPP Solar	8.20	0.77%
SPP Solid Waste	5.28	0.50%
Mini Hydro	46.27	4.36%
<b>Total</b>	<b>1,061.51</b>	

### For Current Year

Category	Dispatch (GWh)	Percentage
CEB Hydro	3,650.2	33.35%
CEB Thermal Oil	1,162.7	10.62%
CEB Coal	4,021.7	36.74%
IPP Thermal	1,055.8	9.65%
SPP Wind	274.5	2.51%
CEB Wind	299.8	2.74%
SPP Solar	70.5	0.64%
SPP Solid Waste	54.4	0.50%
Mini Hydro	356.3	3.26%
<b>Total</b>	<b>10,945.6</b>	

## CEB owned Thermal Plant Dispatch

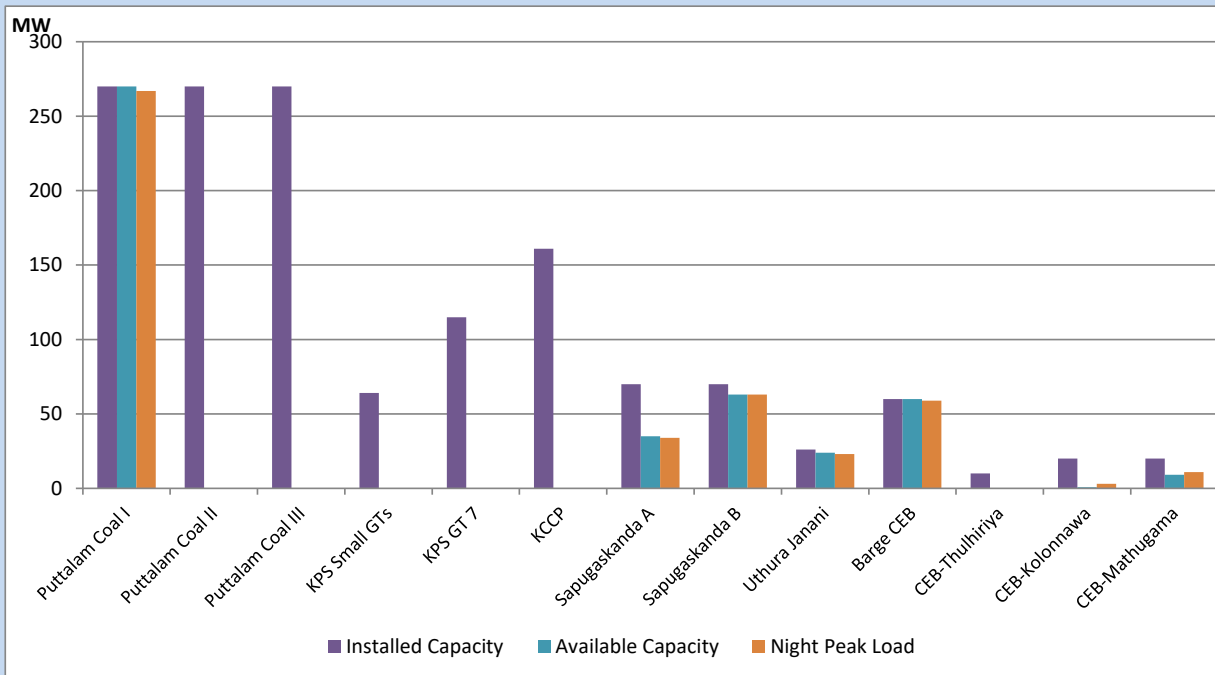
September 27, 2022



Available Generation is estimated based on plant availability at 6.00am on

September 28, 2022

## CEB owned Thermal Plant Loading at the Night Peak



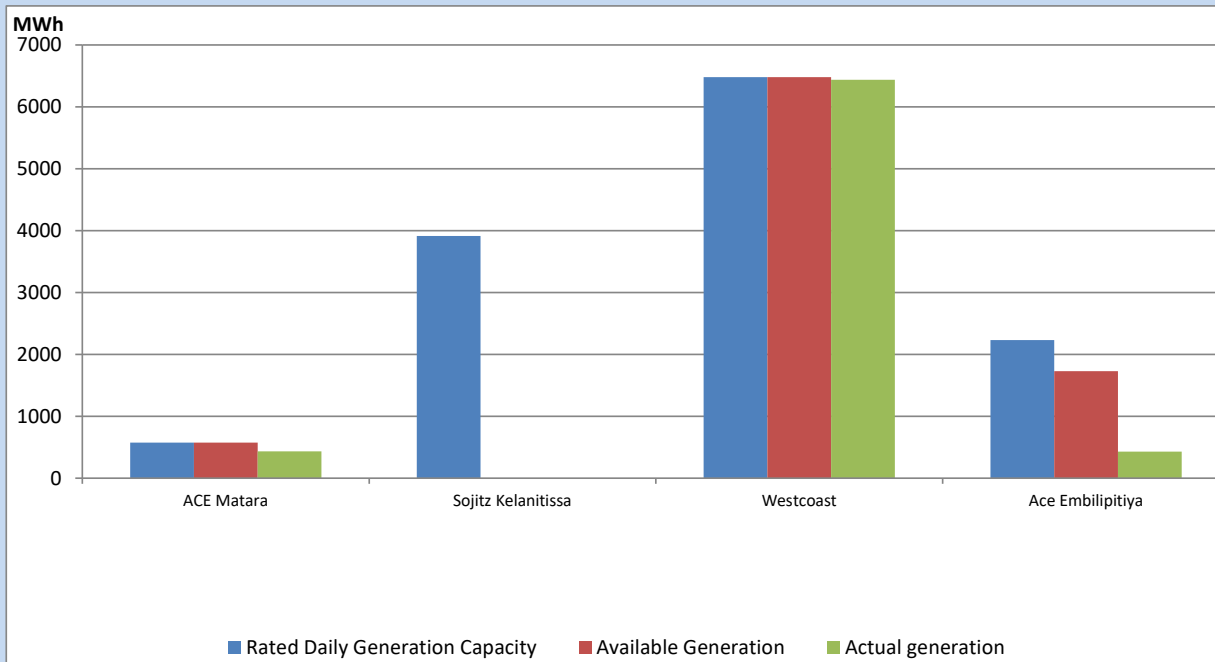
Note- Plant availability is recorded at 6.00 am on

September 28, 2022

## IPP owned Thermal Plant Dispatch

September 27, 2022

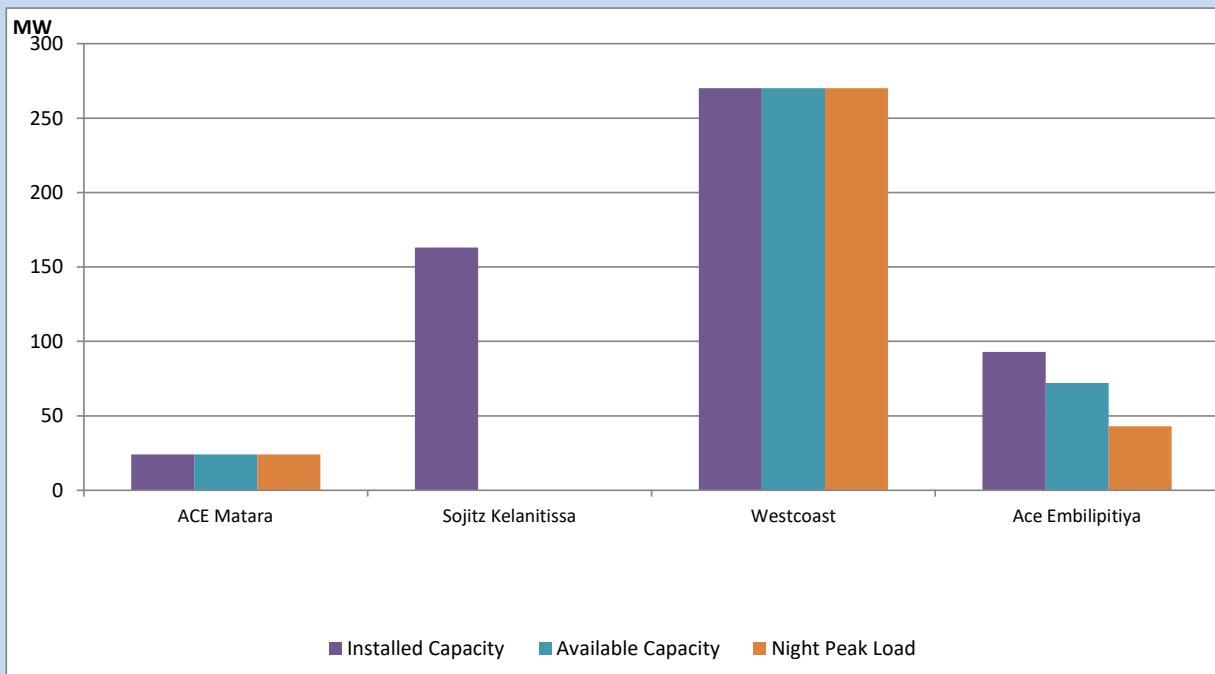
Asia Power, V Power Pallekale, Vpower Galle, V Power Horana, Vpower Hambantota, Vpower Valachchena and Altaqa Mahiyanganaya are not available due to expiration of PPAs



Available Generation is estimated based on plant availability at 6.00am on

September 28, 2022

## IPP owned Thermal Plant Loading at the Night Peak

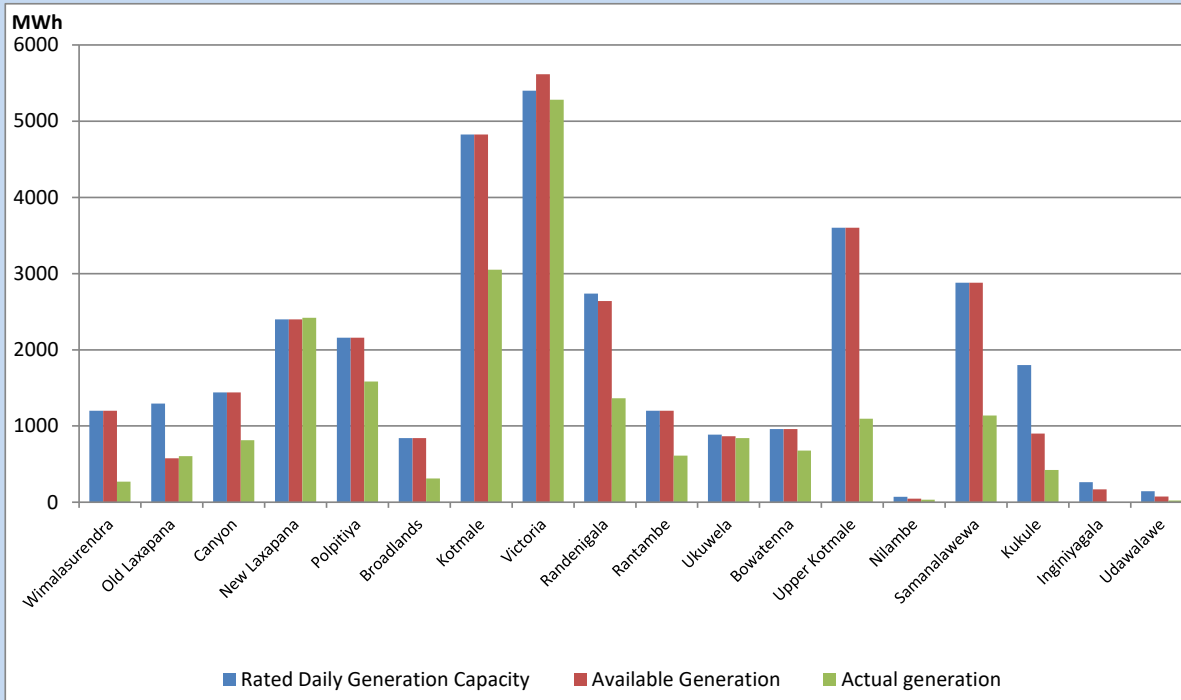


Note- Plant availability is recorded at 6.00 am on

September 28, 2022

## Major Hydro Plant Dispatch

September 27, 2022

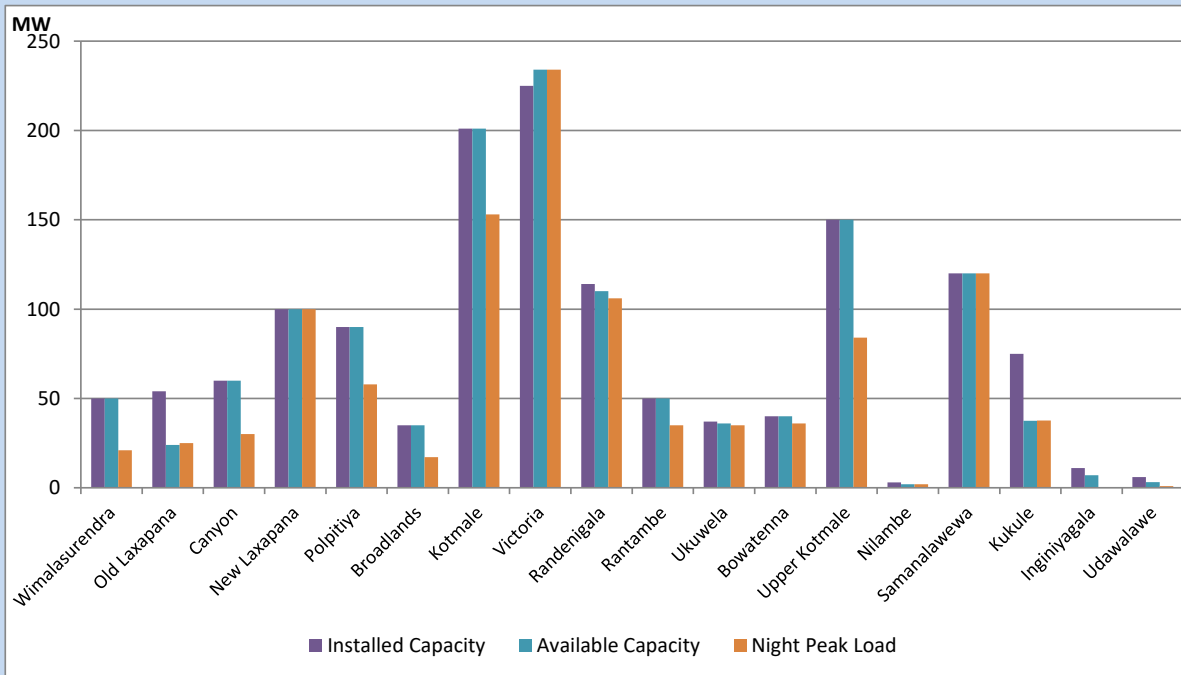


Available Generation is estimated based on plant availability at 6.00am on  
Broadlands power plant is operating in the Commissioning Stage

September 28, 2022

## Major Hydro Plant Loading at Night Peak

September 27, 2022



Note- Plant availability is recorded at 6.00 am on  
Broadlands power plant is operating in the Commissioning Stage

September 28, 2022

## Summary of Major Plant performance

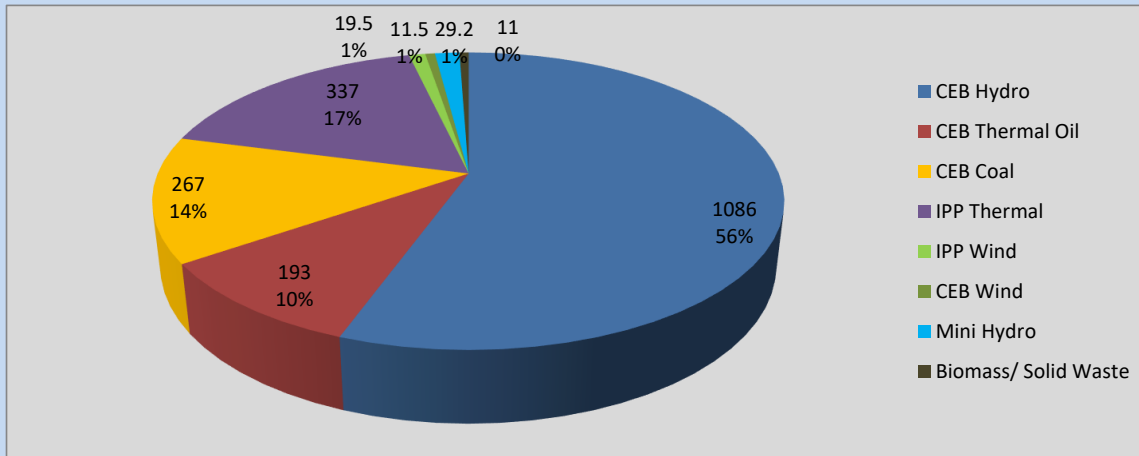
Plant	Installed Capacity	Plant Availability	Night peak Load	Plant Dispatch
	(MW)	(MW)	(MW)	(MWh)
Wimalasurendra	50	50	21	270
Old Laxapana	54	24	25	603
Canyon	60	60	30	815
New Laxapana	100	100	100	2,419
Polpitiya	90	90	58	1,585
Broadlands	35	35	17	312
Kotmale	201	201	153	3,050
Victoria	225	234	234	5,281
Randenigala	114	110	106	1,364
Rantambe	50	50	35	611
Ukuwela	37	36	35	842
Bowatenna	40	40	36	678
Upper Kotmale	150	150	84	1,095
Nilambe	3	2	2	31
Samanalawewa	120	120	120	1,136
Kukule	75	38	38	423
Inginiyagala	11	7	0	0
Udawalawe	6	3	1	24
Puttalam Coal I	270	270	267	6,460
Puttalam Coal II	270	0	0	0
Puttalam Coal III	270	0	0	44
KPS Small GTs	64	0	0	15
KPS GT 7	115	0	0	0
KCCP	161	0	0	0
Sapugaskanda A	70	35	34	804
Sapugaskanda B	70	63	63	1,507
Uthura Janani	26	24	23	544
Barge CEB	60	60	59	1,420
CEB-Thulhiriya	10	0	0	0
CEB-Kolonnawa	20	1	3	89
CEB-Mathugama	20	9	11	161
ACE Matara	24	24	24	432
Sojitz Kelanitissa	163	0	0	0
West Coast	270	270	270	6,437
ACE Embilipitiya	93	72	43	428
<b>Total</b>	<b>3,397</b>	<b>2,178</b>	<b>1,963</b>	<b>41,172</b>

Plant availability is the availability recorded at 6 am on

September 28, 2022

## Contribution to the Night Peak in MW

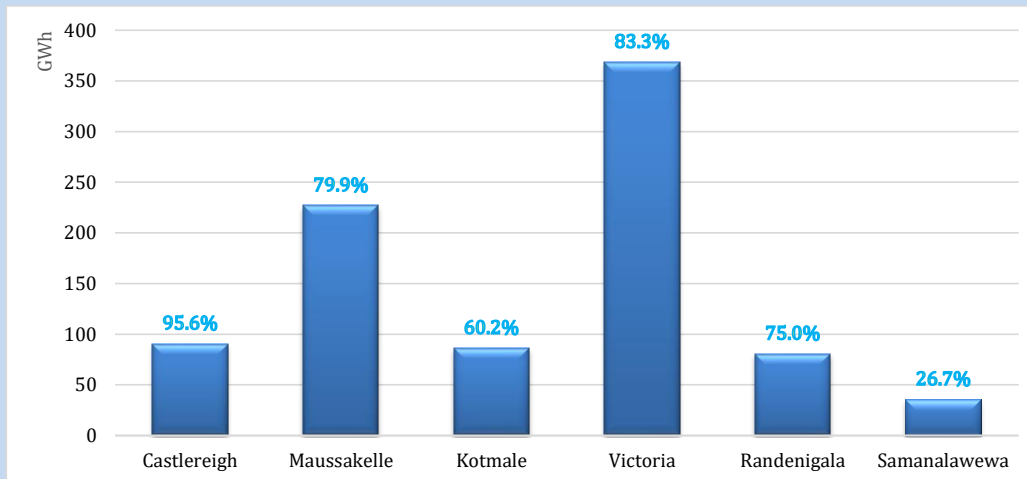
September 27, 2022



Night Peak*	1,953.8 MW
Day Peak	1,915.1 MW
Minimum Demand	1,369.5 MW

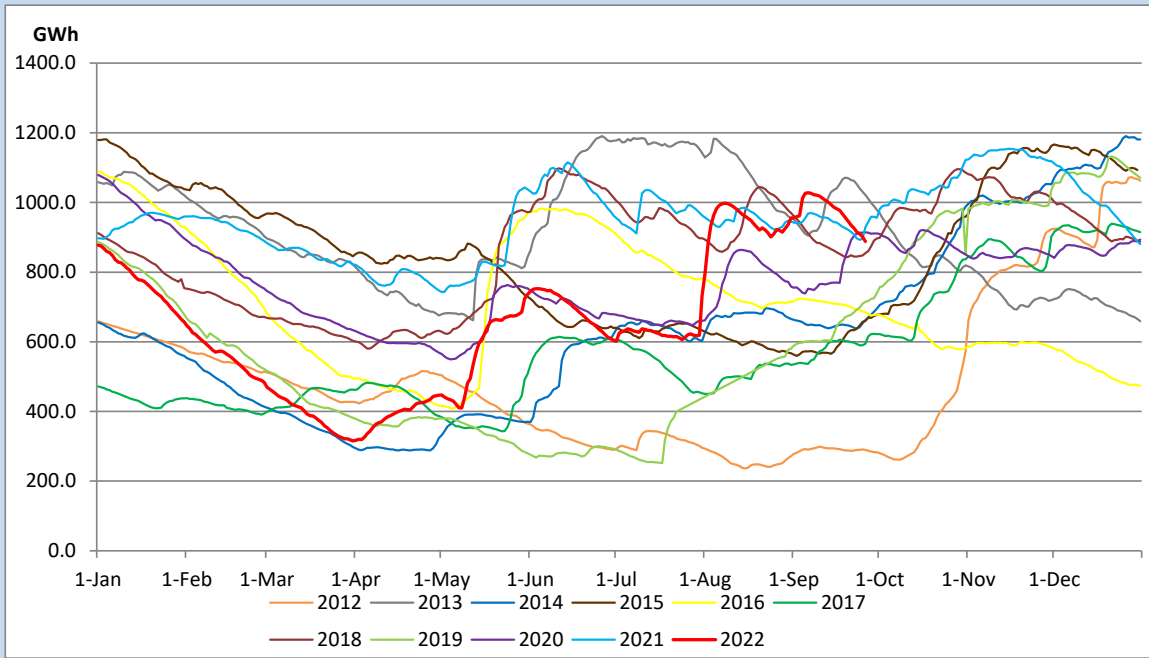
Above figures are excluding contribution from Roof Top Solar, 1MW solar, certain Wind plants and Mini Hydro plants

## Reservoir Levels - as at 06.00 Hr on September 28, 2022

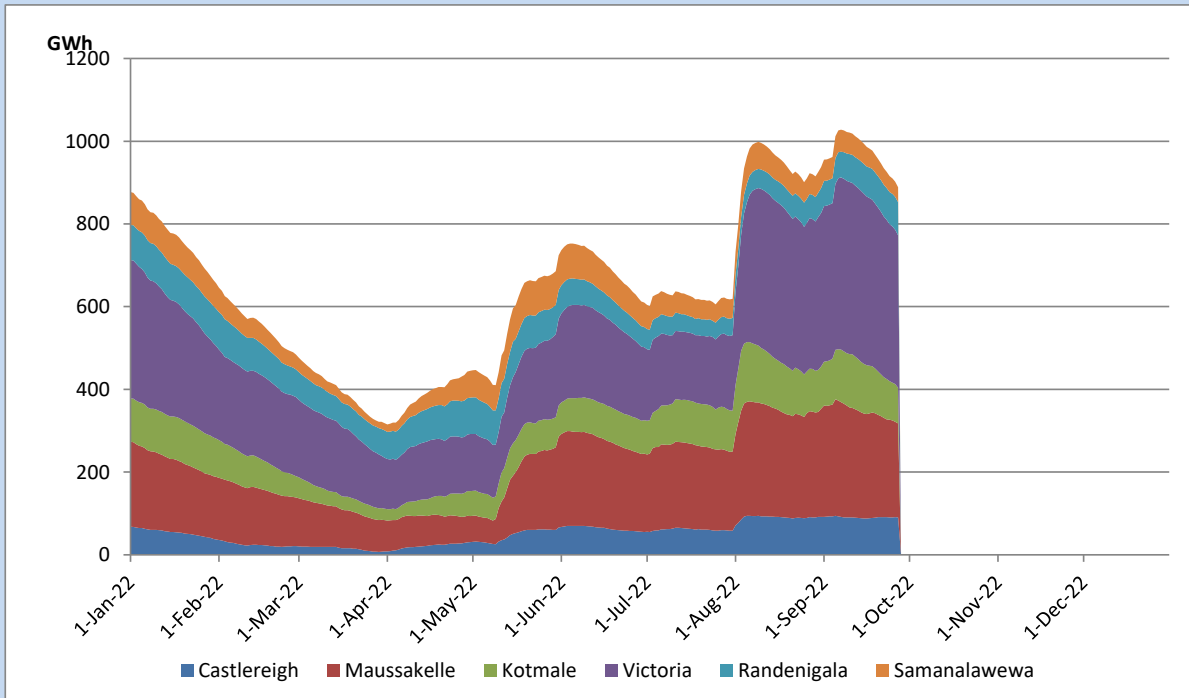


Total Reservoir Level	888.4 GWh
% of Total capacity	73.7%

## Comparison of Total Reservoir Storage Levels with Past Years

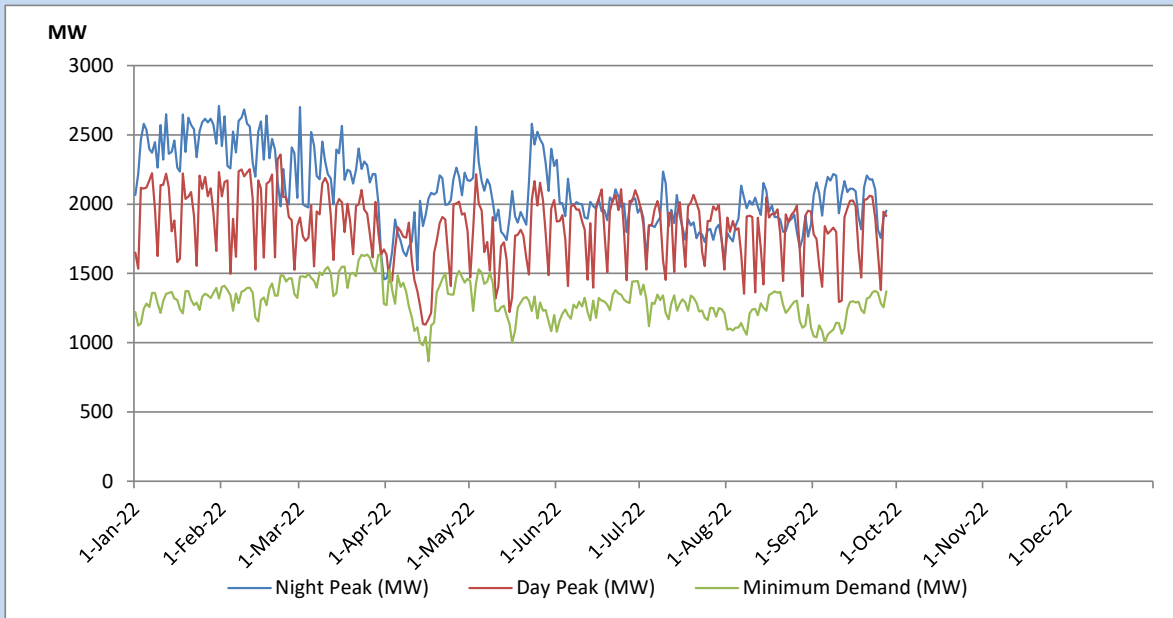


## Variation of Major Hydro Reservoir Levels in the current year (GWh)





## Variation of Demand during the current year

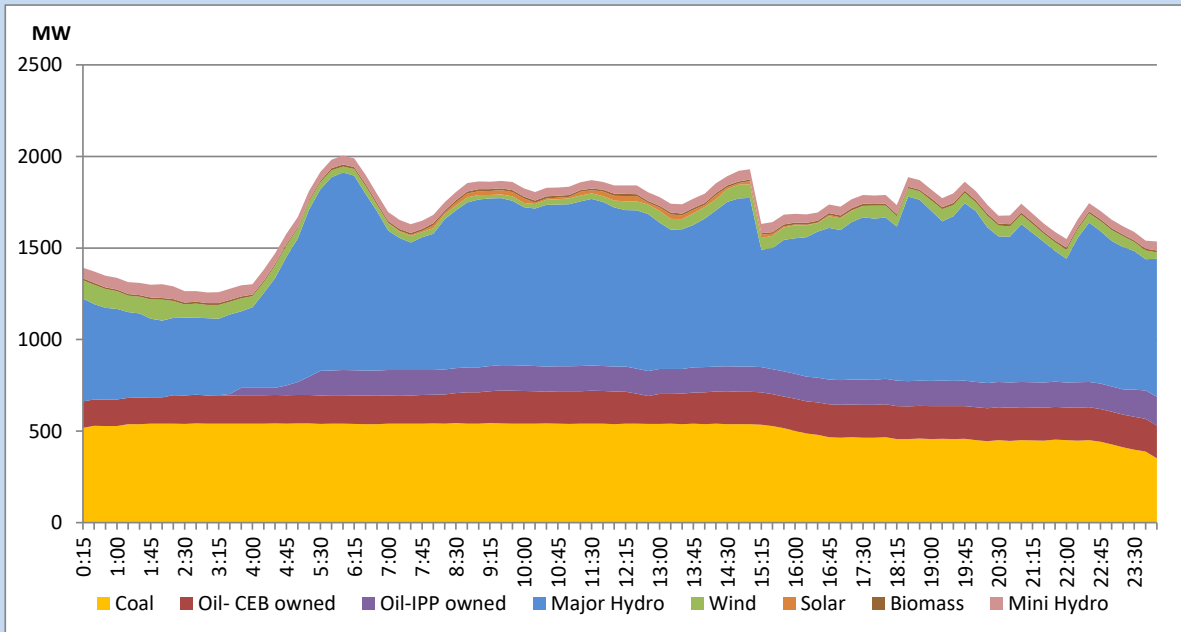


The above figures are excluding contribution from Roof Top Solar, 1MW solar, certain Wind plants and Mini Hydro plants

## Daily Load Curve of the Previous day

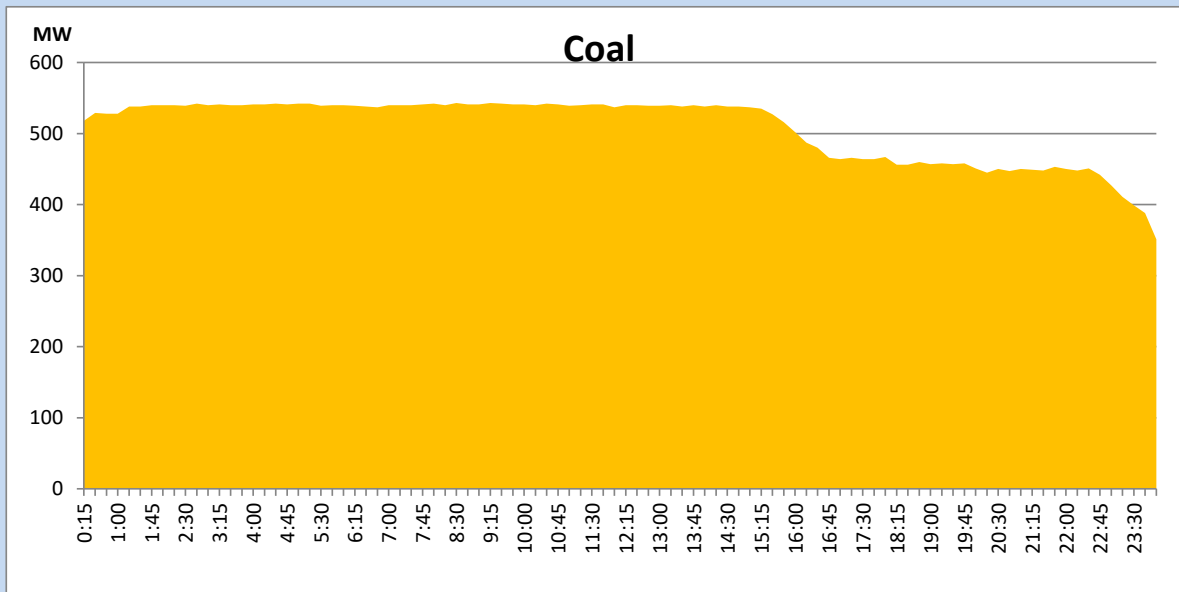
September 26, 2022

Solar and wind data is based on Telemetered Power Stations only



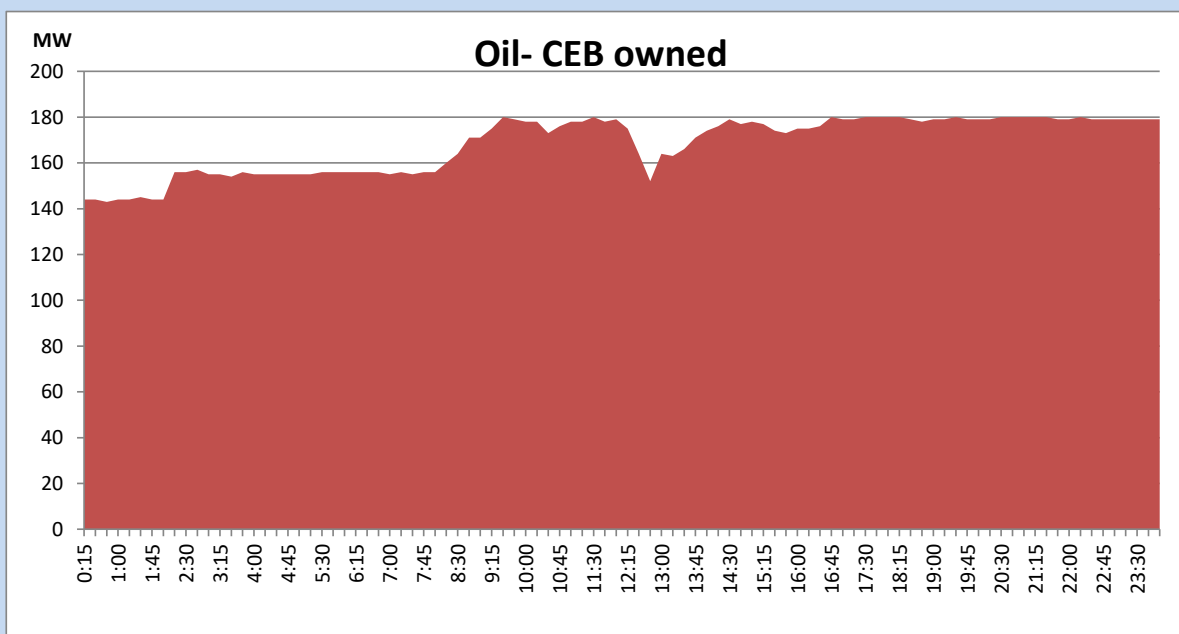
## Coal Generation during the Previous day

September 26, 2022



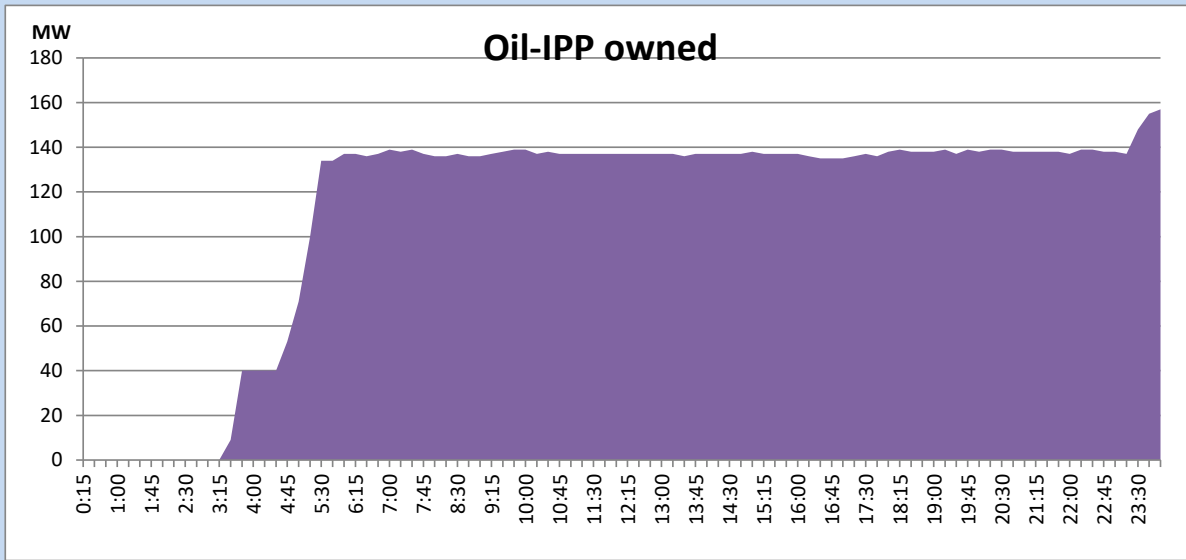
## CEB Oil Plant Generation during the Previous day

September 26, 2022



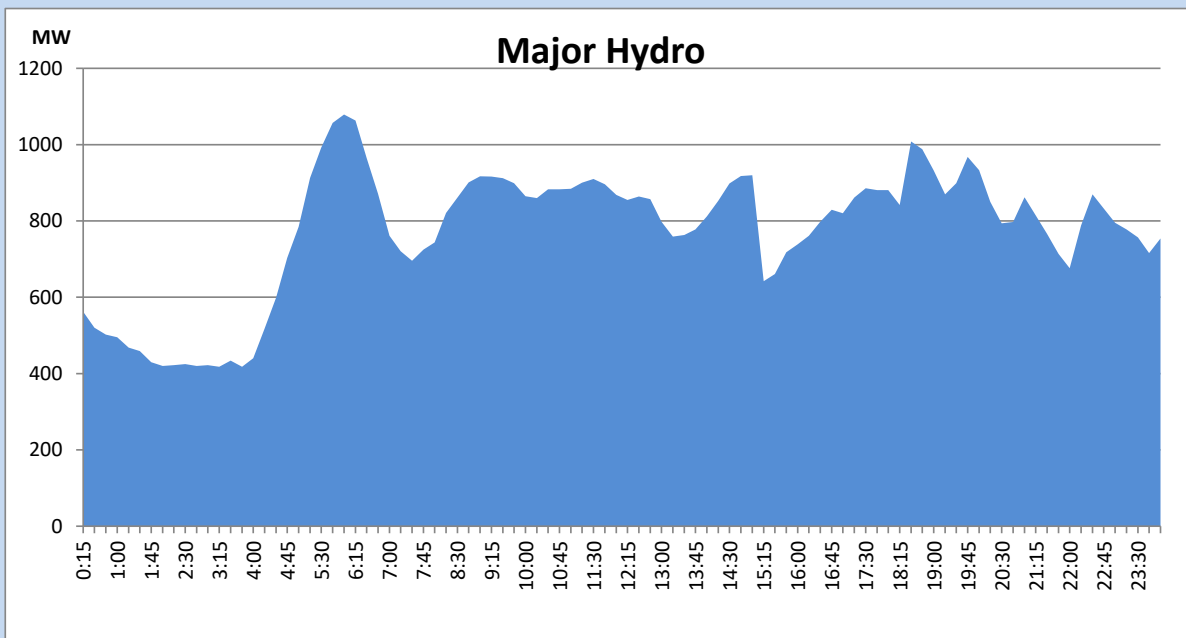
## IPP Oil Plant Generation during the Previous day

September 26, 2022



## Major Hydro Generation during the Previous day

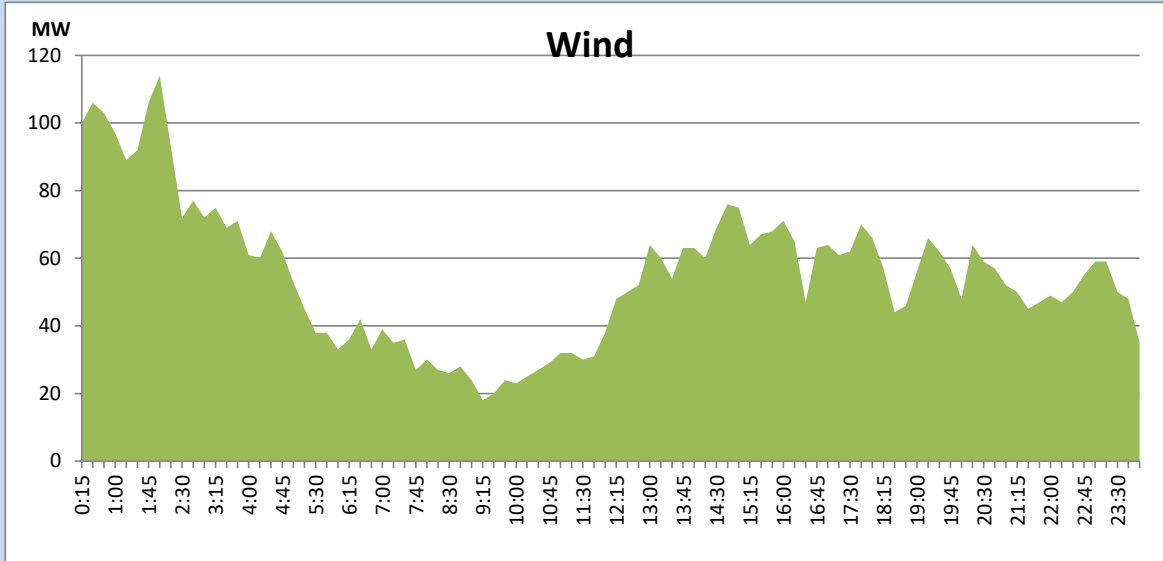
September 26, 2022



## Wind Generation during the Previous day

September 26, 2022

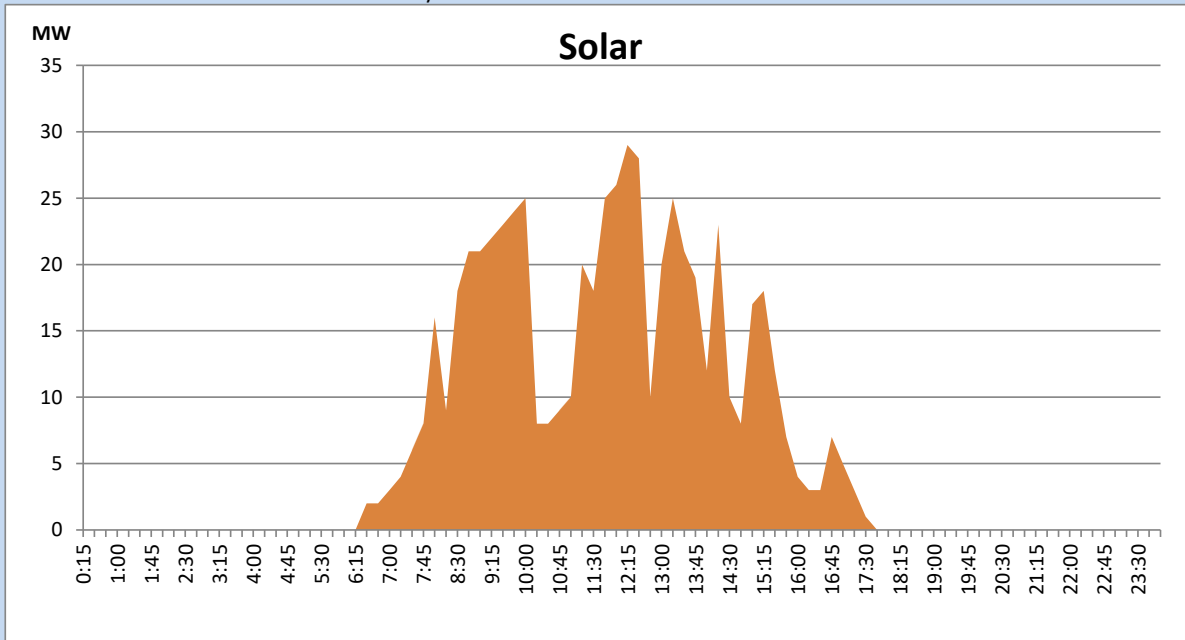
Based on Telemetered Power Stations only



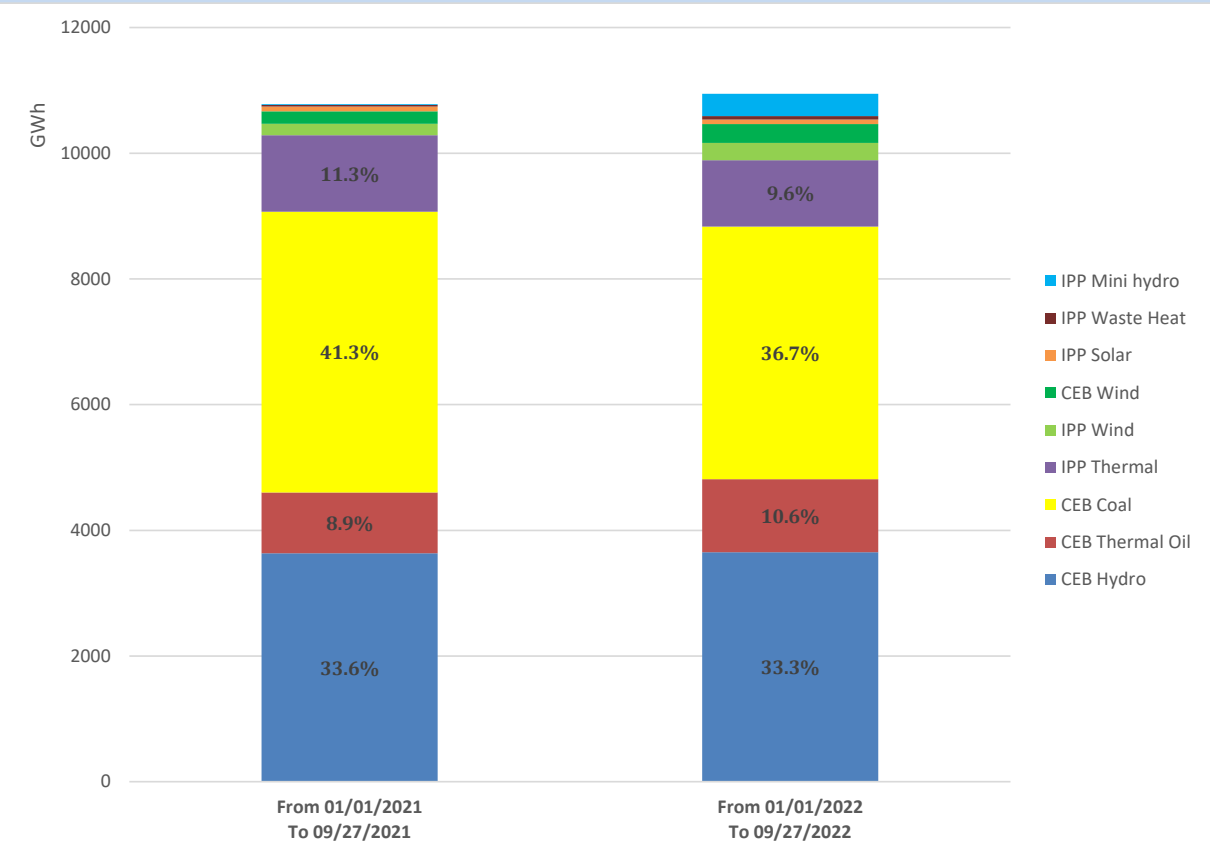
## Solar Generation during the Previous day

September 26, 2022

Based on Telemetered Power Stations only



# Cumulative Dispatch Comparison with Last Year



## Thermal Plant Fuel types

Power Station	Primary Fuel
CEB Thermal	
Sapugaskanda 1	Heavy Fuel
Sapugaskanda 2	Heavy Fuel
Kelanitissa Small Gas Turbines	Auto Diesel
GT 7 - Kelanitissa	Auto Diesel
Kelanitissa CCY	Naphtha or Diesel
Lakvijaya 1	Coal
Lakvijaya 2	Coal
Lakvijaya 3	Coal
Uthuru Janani	Heavy Fuel
Barge CEB	Heavy Fuel

Power Station	Primary Fuel
Private Thermal	
Sojitz - Kelanitissa	Auto Diesel
West Coast	Auto Diesel / Heavy Fuel
ACE Matara	Heavy Fuel
ACE Embilipitiya	Heavy Fuel

### Major Incidents during the day -as reported by CEB morning of

September 28, 2022

- 1) Rotational manual load shedding was carried out from 13:00hrs to 22:00hrs.
- 2) Kolonnawa-Seethawaka cct tripped from both ends and Seethawaka-Broadlands cct tripped from Broadlands end at 11:50hrs due to the operation of distance protection, causing Seethawaka GSS to be dead. Kolonnawa-Seethawaka cct and all affected feeders at Seethawaka GSS were normalized by 12:15hrs. Seethawaka-Broadlands cct was normalized by 12:47hrs.
- 3) New Habarana 220/132/33kV T/F 02 tripped at 14:01hrs indicating the operation of sudden pressure trip. N'Habarana T/F 02 is yet to be restored.