

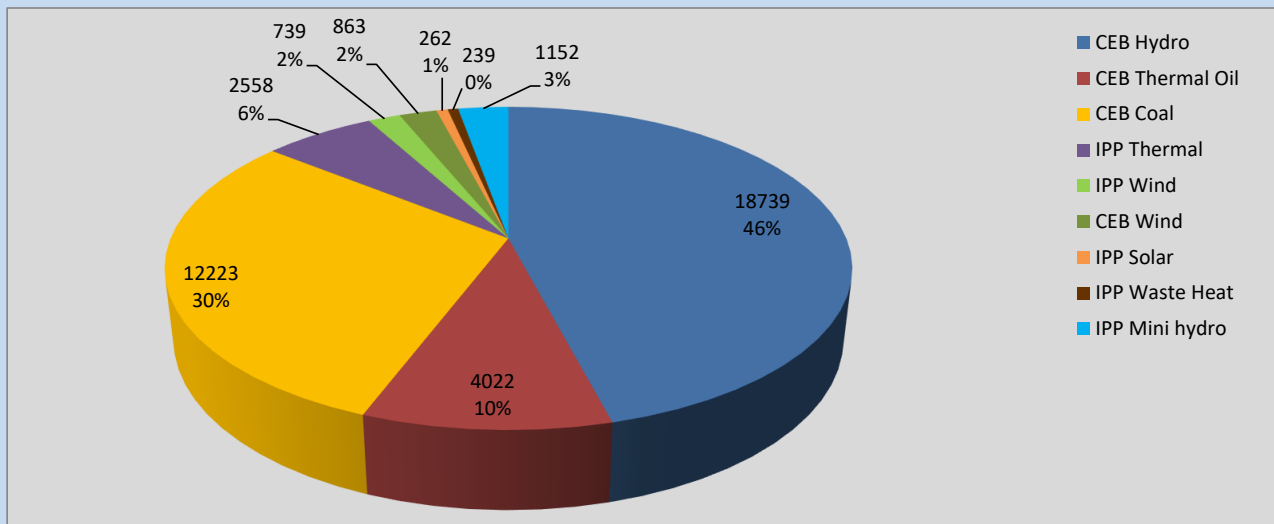
Generation and Reservoirs Statistics

September 26, 2022



PUBLIC UTILITIES COMMISSION OF SRI LANKA

Daily Generation Mix in MWh



Total Generation **40,797 MWh**

Note: Above data is excluding contribution from Roof Top Solar, 1MW Solar and certain Mini Hydro plants

Cumulative Dispatch

Note: Following data is Excluding contribution from Roof Top Solar, 1MW solar and Mini Hydro plants

For Current Month

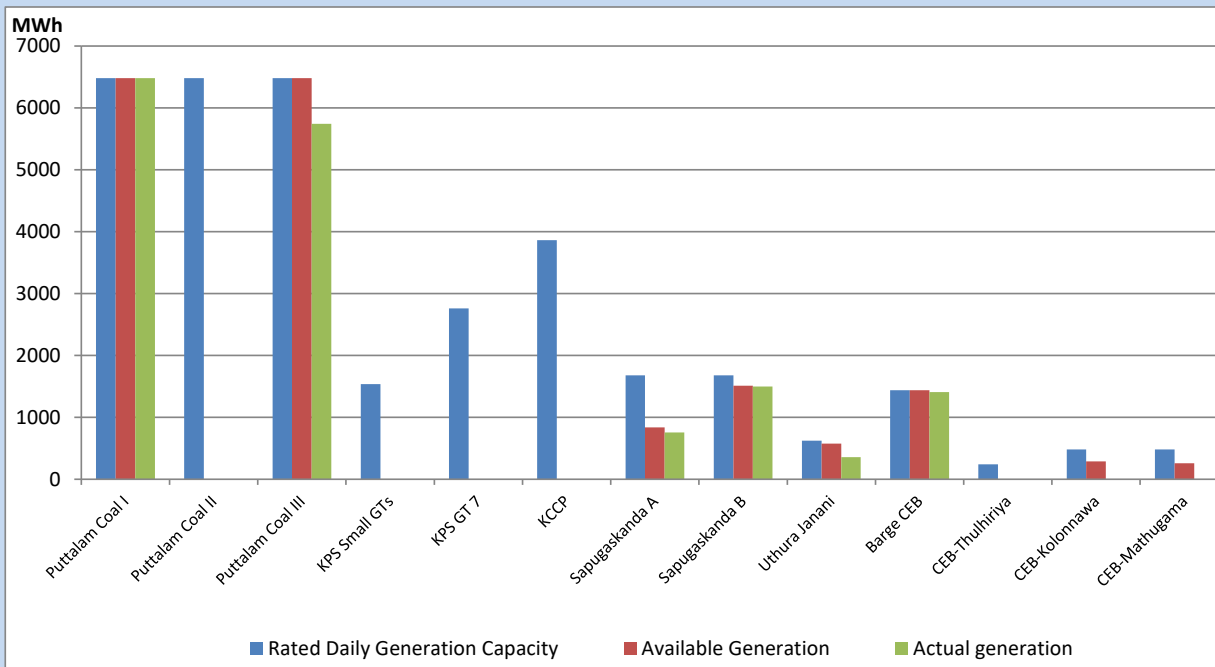
Category	Dispatch (GWh)	Percentage
CEB Hydro	495.94	48.60%
CEB Thermal Oil	45.81	4.49%
CEB Coal	302.10	29.61%
IPP Thermal	21.55	2.11%
SPP Wind	43.16	4.23%
CEB Wind	53.20	5.21%
SPP Solar	8.03	0.79%
SPP Solid Waste	5.16	0.51%
Mini Hydro	45.40	4.45%
Total	1,020.35	

For Current Year

Category	Dispatch (GWh)	Percentage
CEB Hydro	3,629.6	33.29%
CEB Thermal Oil	1,158.2	10.62%
CEB Coal	4,015.2	36.82%
IPP Thermal	1,048.5	9.62%
SPP Wind	274.0	2.51%
CEB Wind	299.3	2.74%
SPP Solar	70.3	0.64%
SPP Solid Waste	54.3	0.50%
Mini Hydro	355.4	3.26%
Total	10,904.5	

CEB owned Thermal Plant Dispatch

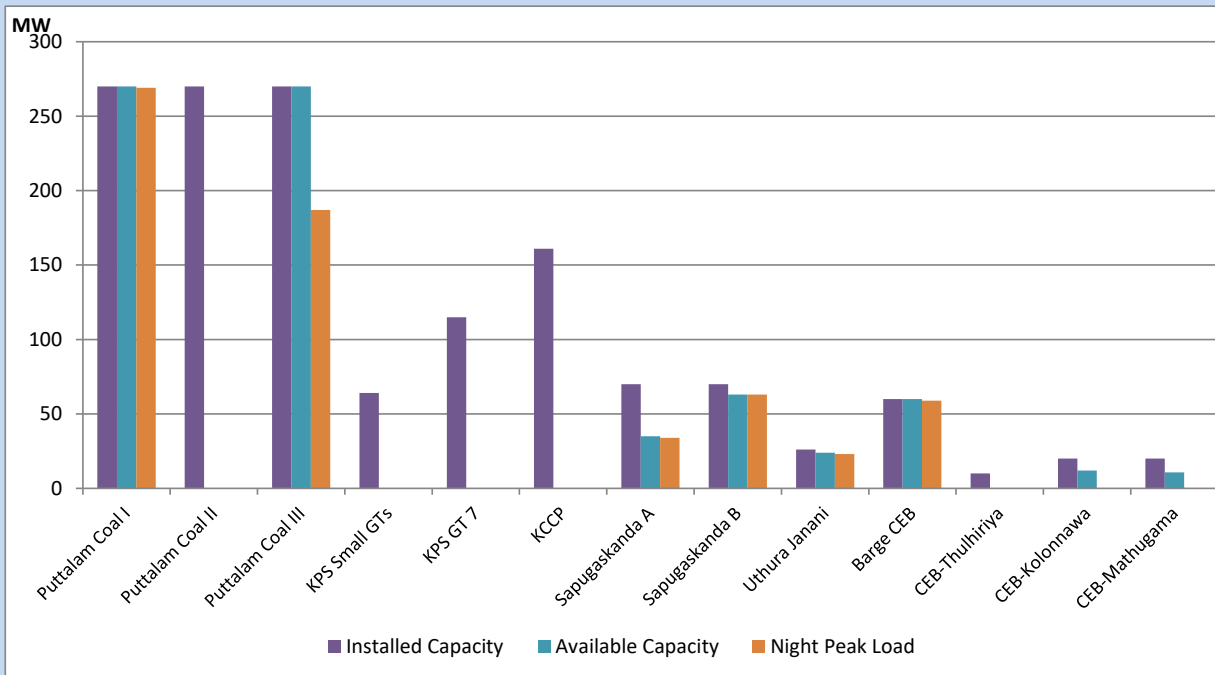
September 26, 2022



Available Generation is estimated based on plant availability at 6.00am on

September 27, 2022

CEB owned Thermal Plant Loading at the Night Peak



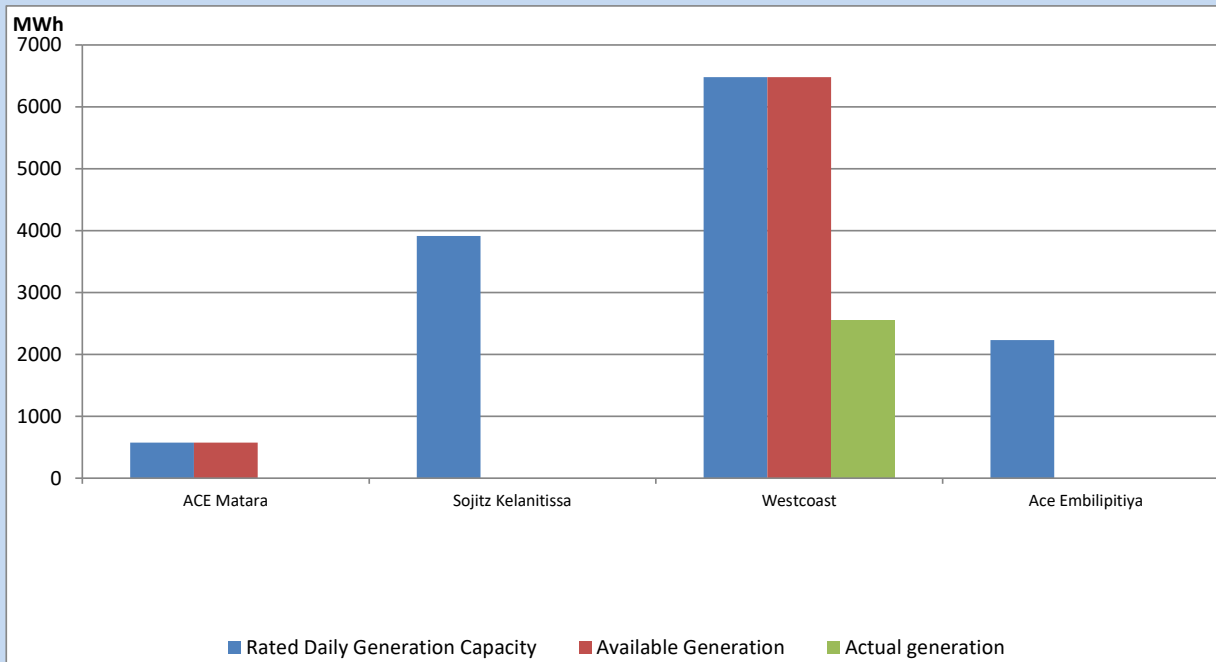
Note- Plant availability is recorded at 6.00 am on

September 27, 2022

IPP owned Thermal Plant Dispatch

September 26, 2022

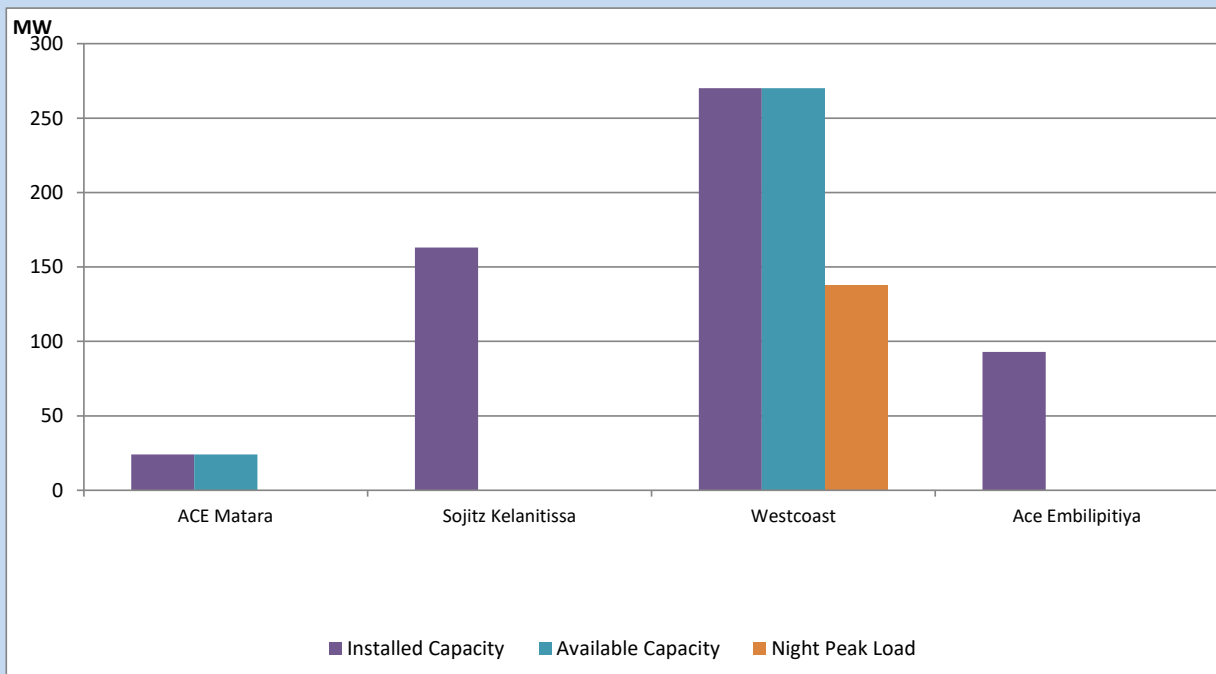
Asia Power, V Power Pallekale, Vpower Galle, V Power Horana, Vpower Hambantota, Vpower Valachchena and Altaqa Mahiyanganaya are not available due to expiration of PPAs



Available Generation is estimated based on plant availability at 6.00am on

September 27, 2022

IPP owned Thermal Plant Loading at the Night Peak

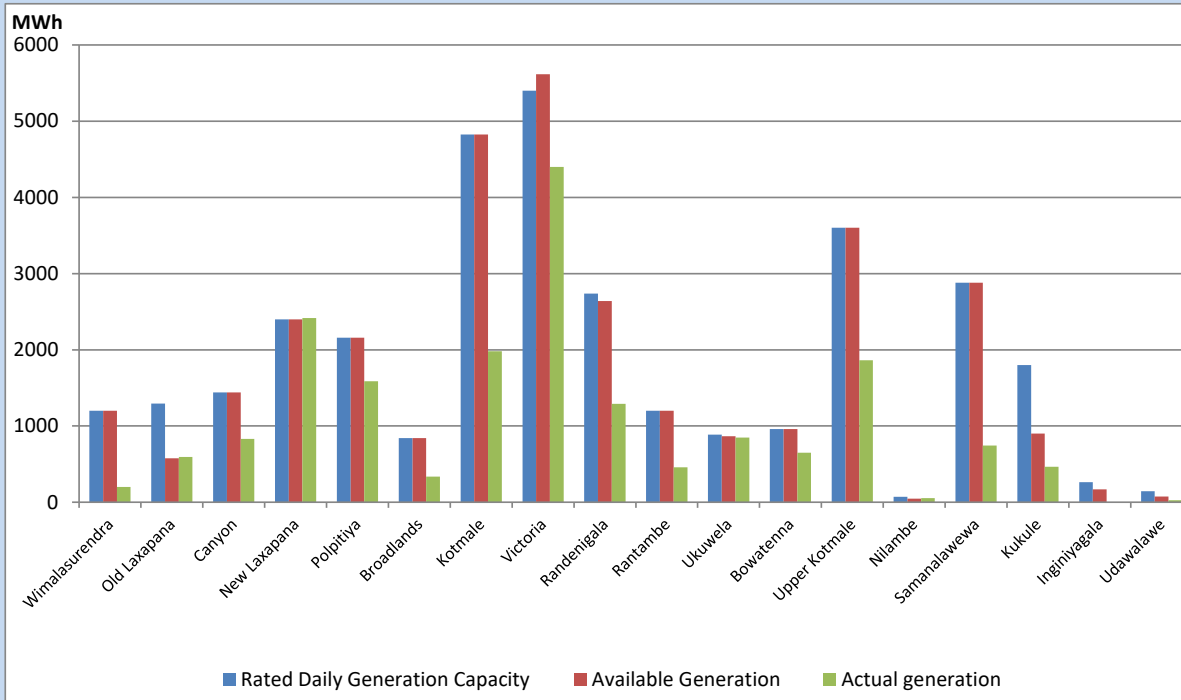


Note- Plant availability is recorded at 6.00 am on

September 27, 2022

Major Hydro Plant Dispatch

September 26, 2022

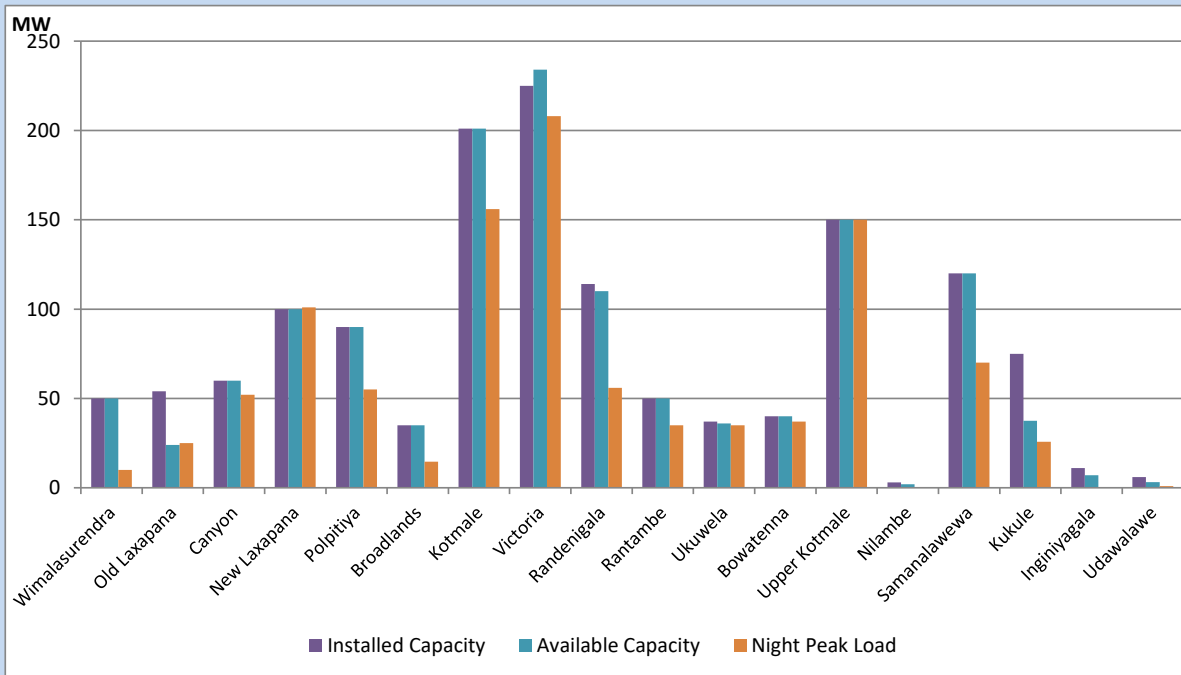


Available Generation is estimated based on plant availability at 6.00am on
 Broadlands power plant is operating in the Commissioning Stage

September 27, 2022

Major Hydro Plant Loading at Night Peak

September 26, 2022



Note- Plant availability is recorded at 6.00 am on
 Broadlands power plant is operating in the Commissioning Stage

September 27, 2022

Summary of Major Plant performance

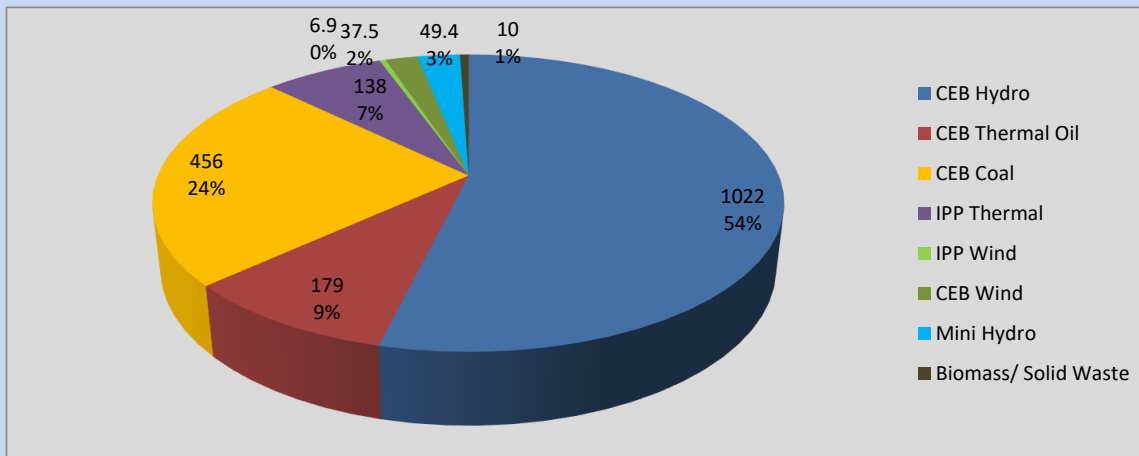
Plant	Installed Capacity	Plant Availability	Night peak Load	Plant Dispatch
	(MW)	(MW)	(MW)	(MWh)
Wimalasurendra	50	50	10	200
Old Laxapana	54	24	25	593
Canyon	60	60	52	832
New Laxapana	100	100	101	2,415
Polpitiya	90	90	55	1,586
Broadlands	35	35	15	336
Kotmale	201	201	156	1,980
Victoria	225	234	208	4,400
Randenigala	114	110	56	1,291
Rantambe	50	50	35	459
Ukuwela	37	36	35	849
Bowatenna	40	40	37	648
Upper Kotmale	150	150	150	1,864
Nilambe	3	2	0	54
Samanalawewa	120	120	70	743
Kukule	75	38	26	464
Inginiyagala	11	7	0	0
Udawalawe	6	3	1	25
Puttalam Coal I	270	270	269	6,481
Puttalam Coal II	270	0	0	0
Puttalam Coal III	270	270	187	5,742
KPS Small GTs	64	0	0	0
KPS GT 7	115	0	0	0
KCCP	161	0	0	0
Sapugaskanda A	70	35	34	756
Sapugaskanda B	70	63	63	1,498
Uthura Janani	26	24	23	359
Barge CEB	60	60	59	1,409
CEB-Thulhiriya	10	0	0	0
CEB-Kolonnawa	20	12	0	0
CEB-Mathugama	20	11	0	0
ACE Matara	24	24	0	0
Sojitz Kelanitissa	163	0	0	0
West Coast	270	270	138	2,558
ACE Embilipitiya	93	0	0	0
Total	3,397	2,388	1,908	40,797

Plant availability is the availability recorded at 6 am on

September 27, 2022

Contribution to the Night Peak in MW

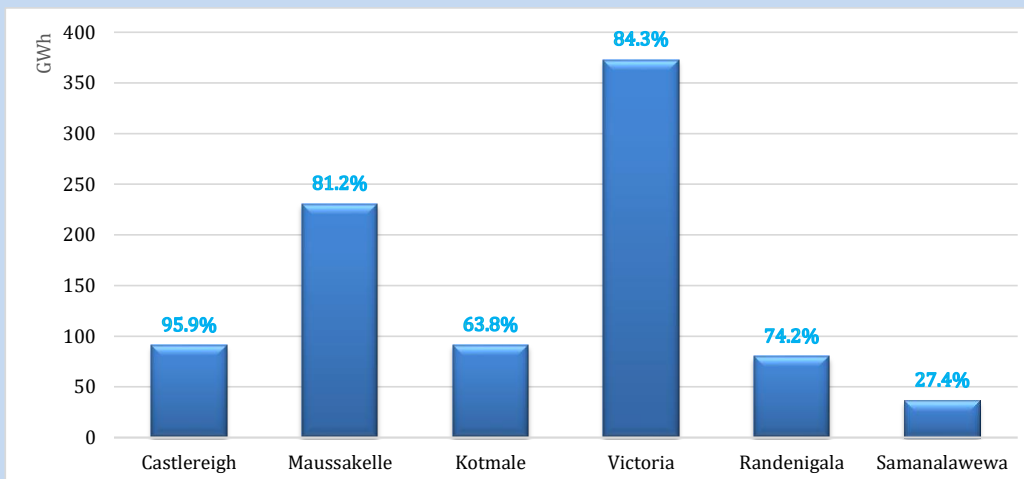
September 26, 2022



Night Peak*	1,898.3 MW
Day Peak	1,946.1 MW
Minimum Demand	1,255.1 MW

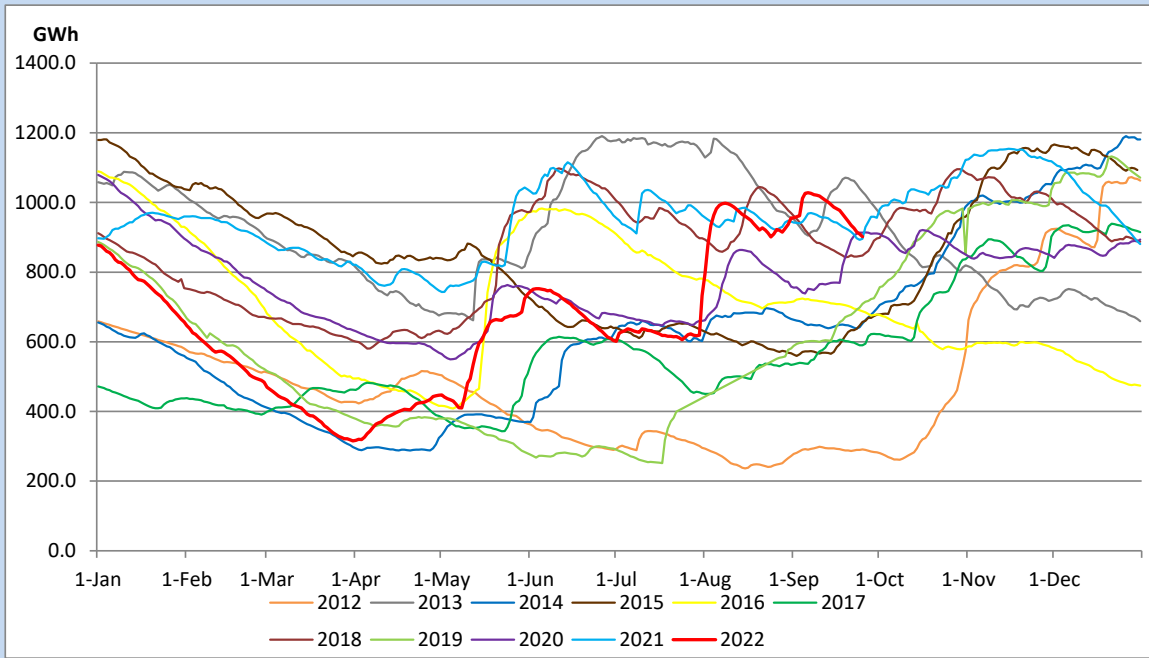
Above figures are excluding contribution from Roof Top Solar, 1MW solar, certain Wind plants and Mini Hydro plants

Reservoir Levels - as at 06.00 Hr on September 27, 2022

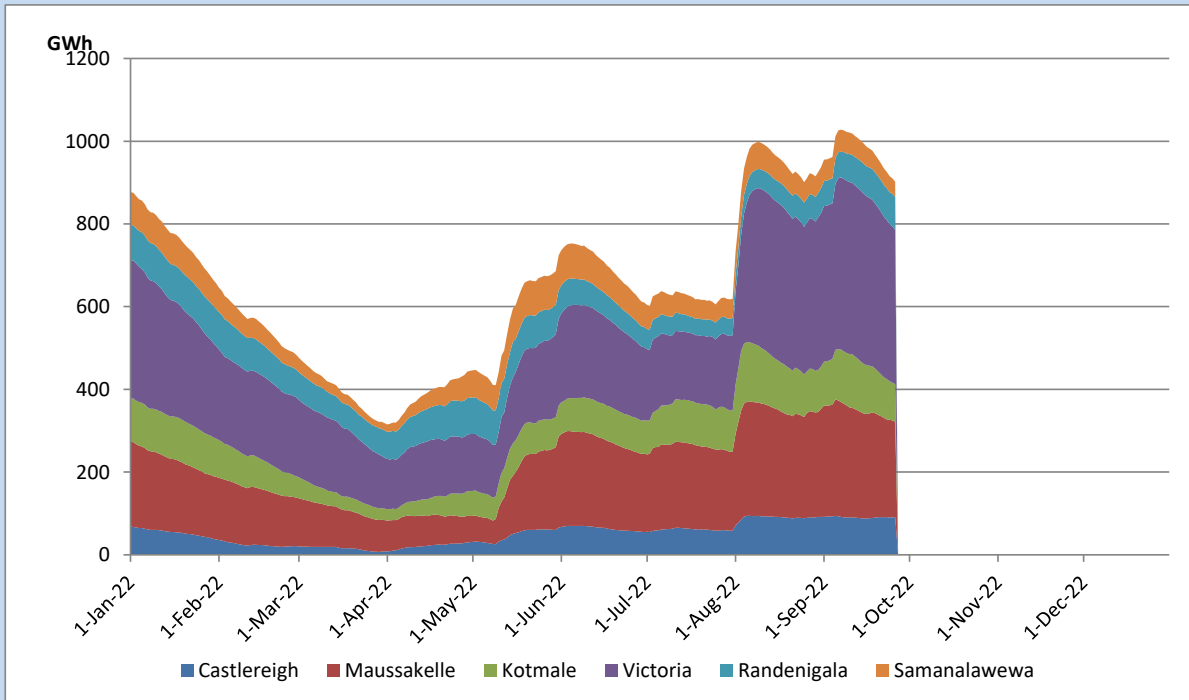


Total Reservoir Level	901.9 GWh
% of Total capacity	74.9%

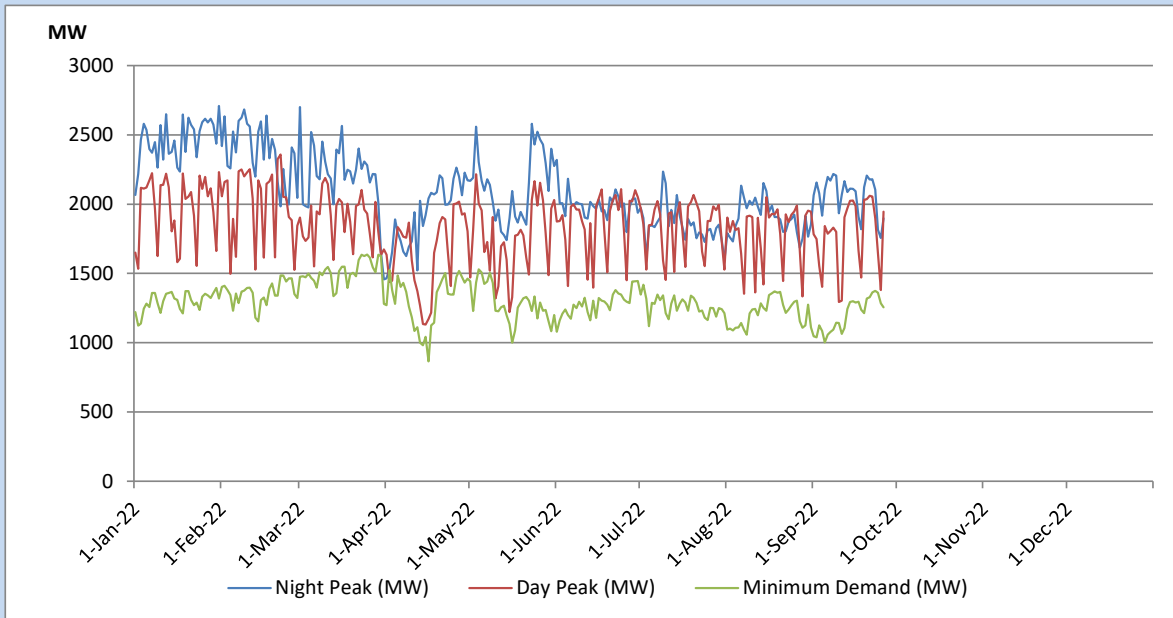
Comparison of Total Reservoir Storage Levels with Past Years



Variation of Major Hydro Reservoir Levels in the current year (GWh)



Variation of Demand during the current year

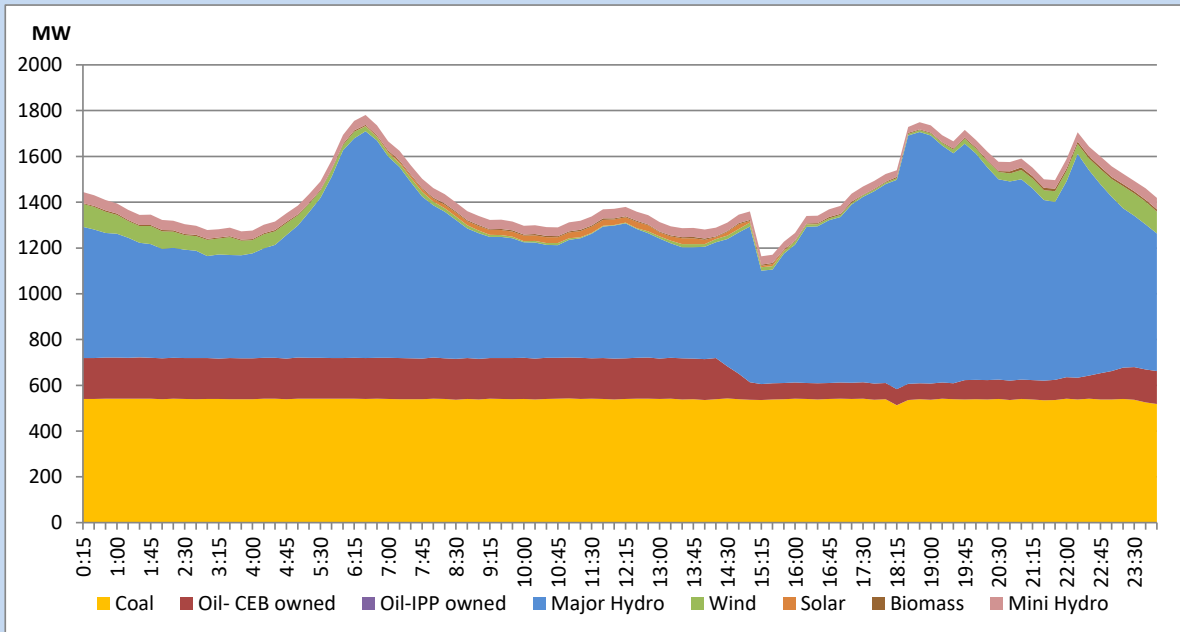


The above figures are excluding contribution from Roof Top Solar, 1MW solar, certain Wind plants and Mini Hydro plants

Daily Load Curve of the Previous day

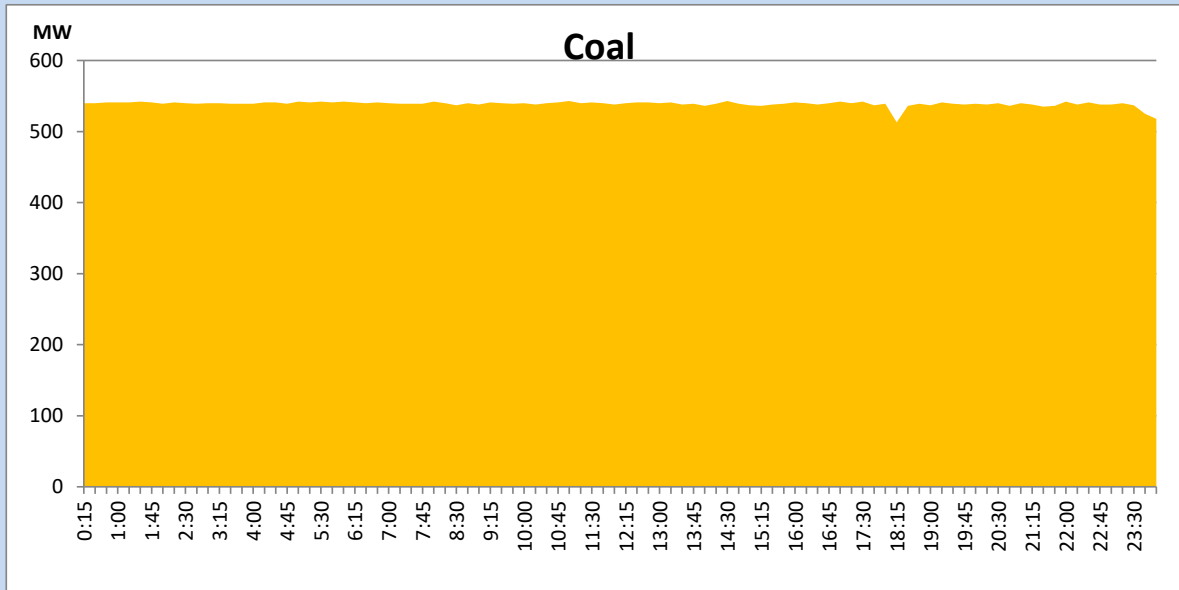
September 25, 2022

Solar and wind data is based on Telemetered Power Stations only



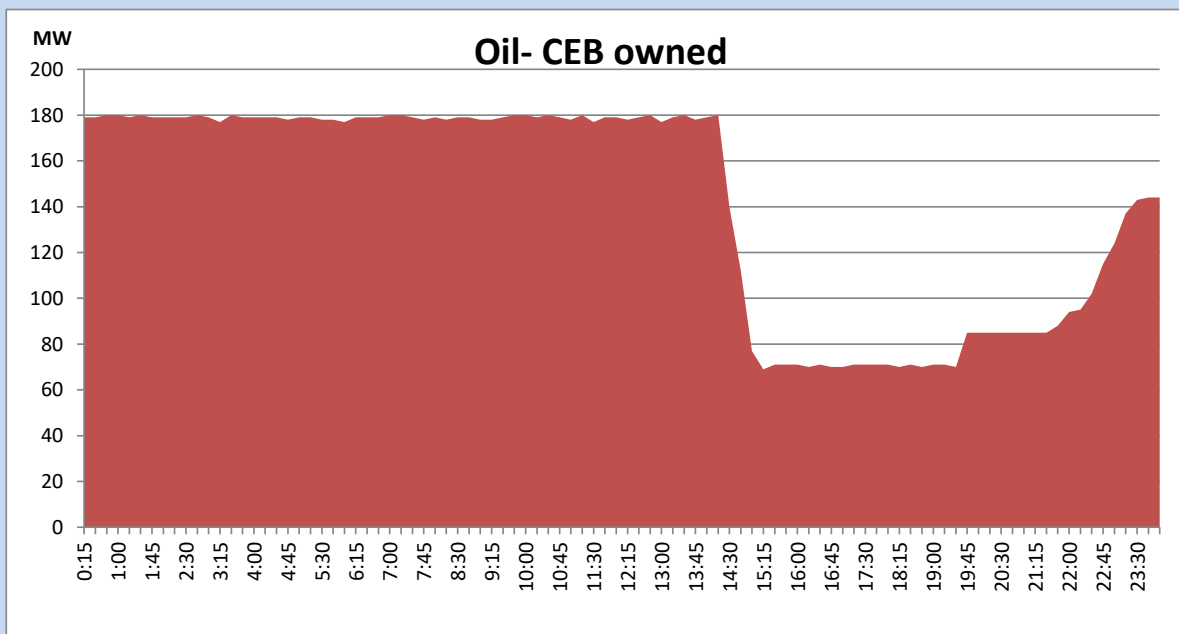
Coal Generation during the Previous day

September 25, 2022



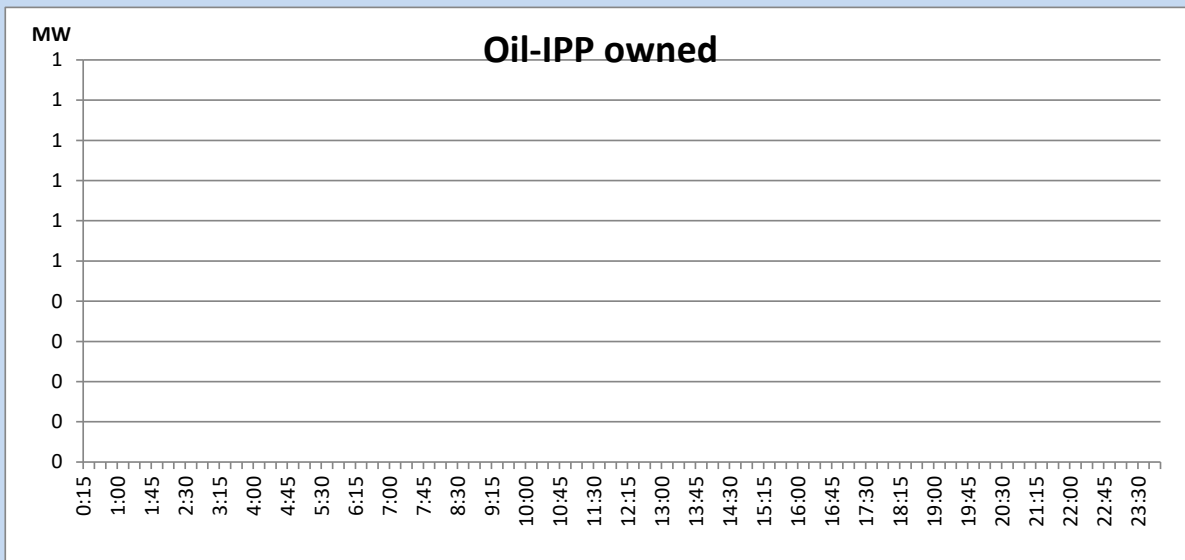
CEB Oil Plant Generation during the Previous day

September 25, 2022



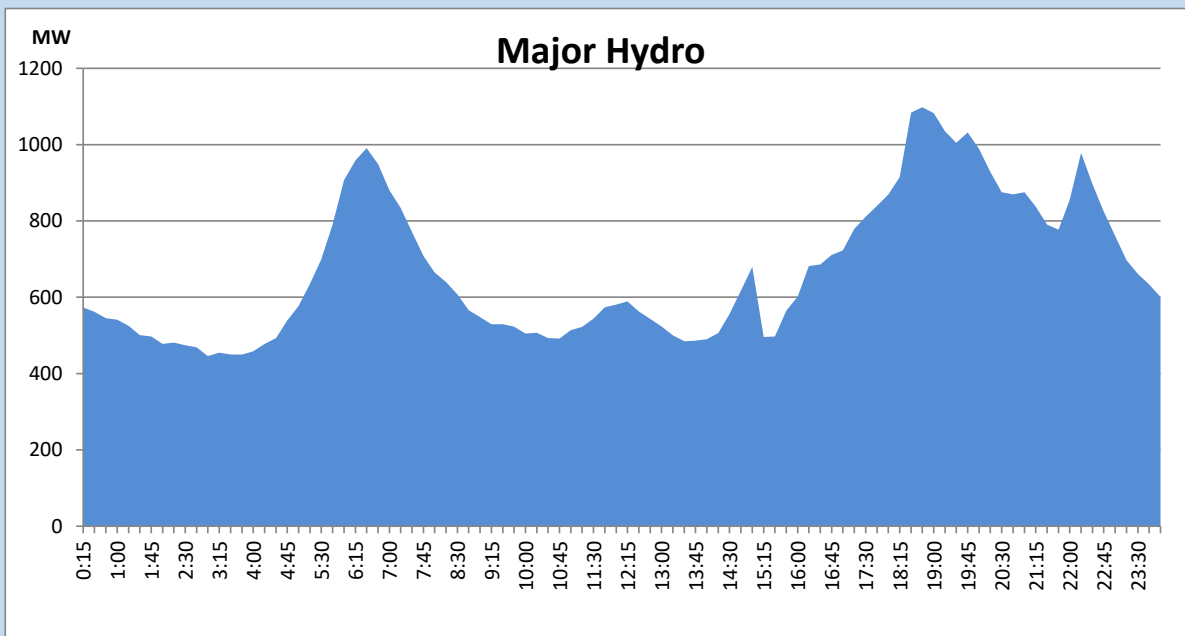
IPP Oil Plant Generation during the Previous day

September 25, 2022



Major Hydro Generation during the Previous day

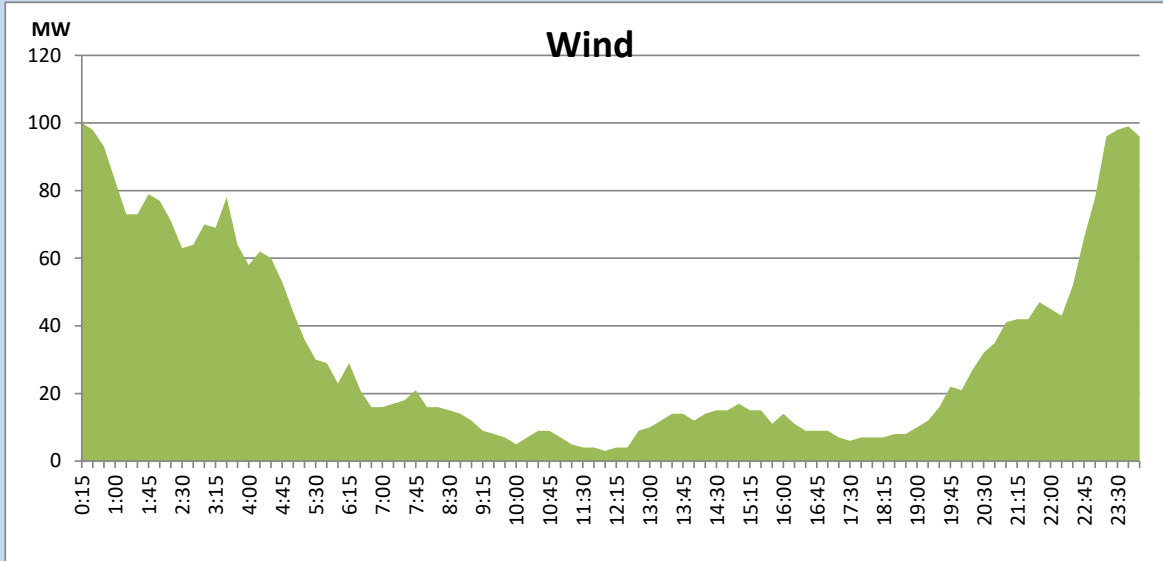
September 25, 2022



Wind Generation during the Previous day

September 25, 2022

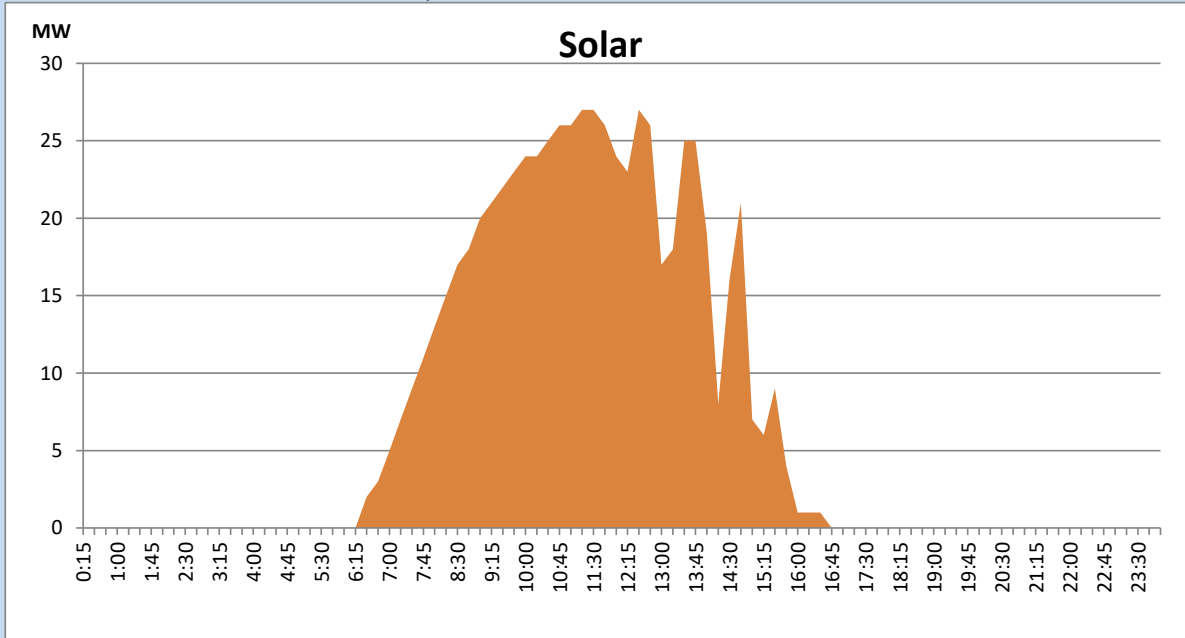
Based on Telemetered Power Stations only



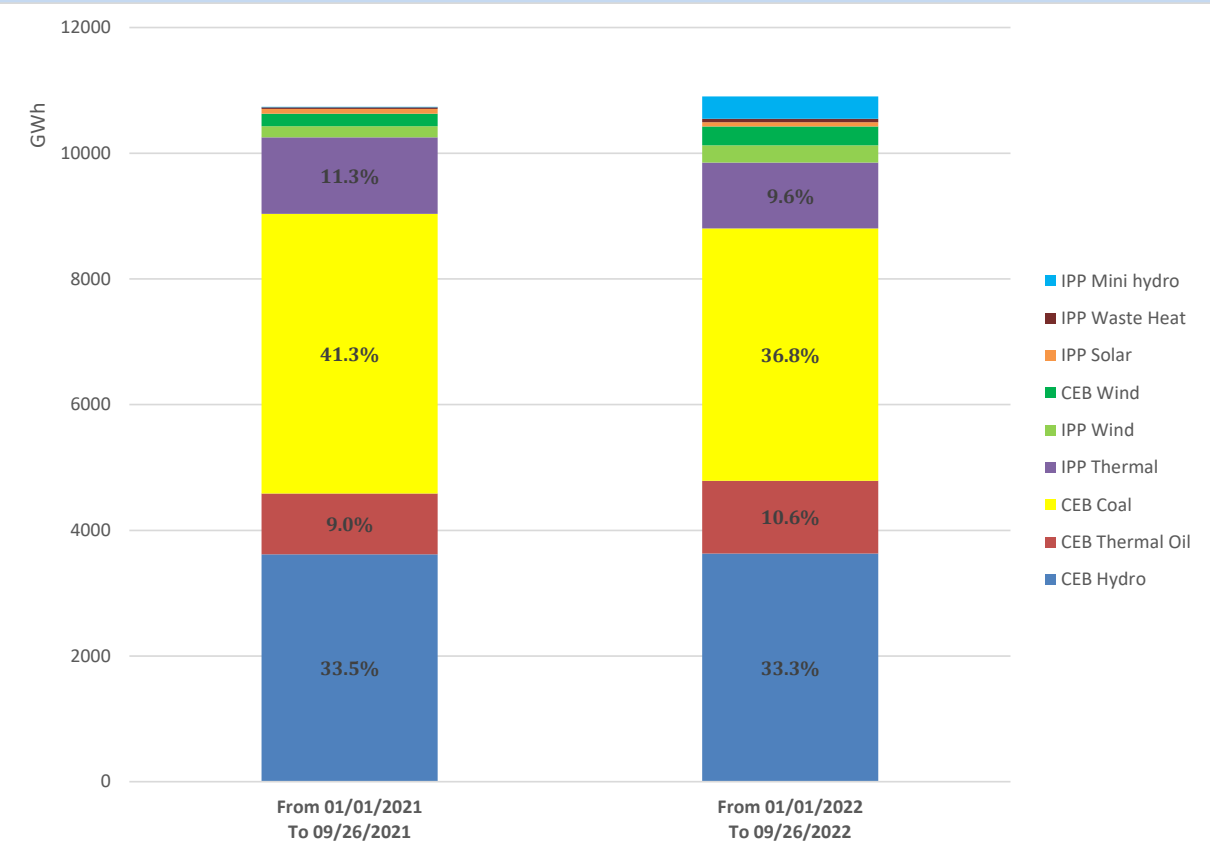
Solar Generation during the Previous day

September 25, 2022

Based on Telemetered Power Stations only



Cumulative Dispatch Comparison with Last Year



Thermal Plant Fuel types

Power Station	Primary Fuel
CEB Thermal	
Sapugaskanda 1	Heavy Fuel
Sapugaskanda 2	Heavy Fuel
Kelanitissa Small Gas Turbines	Auto Diesel
GT 7 - Kelanitissa	Auto Diesel
Kelanitissa CCY	Naphtha or Diesel
Lakvijaya 1	Coal
Lakvijaya 2	Coal
Lakvijaya 3	Coal
Uthuru Janani	Heavy Fuel
Barge CEB	Heavy Fuel

Power Station	Primary Fuel
Private Thermal	
Sojitz - Kelanitissa	Auto Diesel
West Coast	Auto Diesel / Heavy Fuel
ACE Matara	Heavy Fuel
ACE Embilipitiya	Heavy Fuel

Major Incidents during the day -as reported by CEB morning of

September 27, 2022

- 1) Rotational manual load shedding was carried out from 15:00hrs to 22:00hrs.
- 2) Kotugoda – Aniyakanda cct which tripped on 24/09/2022 normalized at 13:53hrs.
- 3) New Habarana 220/132/33kV T/F 02 which tripped on 25/09/2022 normalized at 16:31hrs.
- 4) LVPS unit 03 performed shutdown at 1:02hrs (27.09.2022) due to a steam leak of Boiler feed water pump-B. LVPS unit 03 is yet to resume generation.