

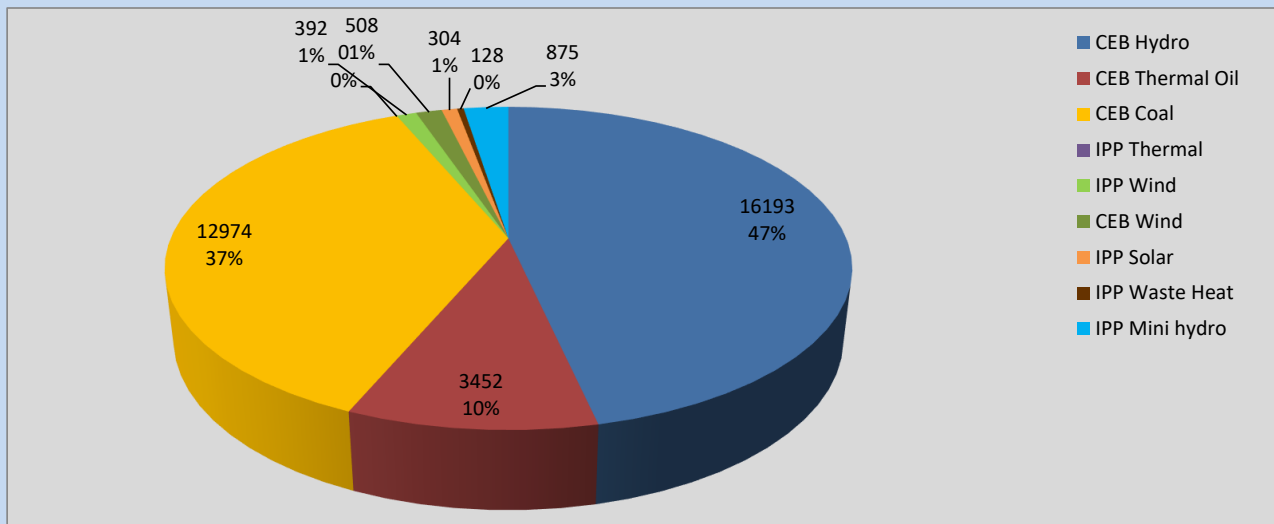
Generation and Reservoirs Statistics

September 25, 2022



PUBLIC UTILITIES COMMISSION OF SRI LANKA

Daily Generation Mix in MWh



Total Generation **34,826 MWh**

Note: Above data is excluding contribution from Roof Top Solar, 1MW Solar and certain Mini Hydro plants

Cumulative Dispatch

Note: Following data is Excluding contribution from Roof Top Solar, 1MW solar and Mini Hydro plants

For Current Month

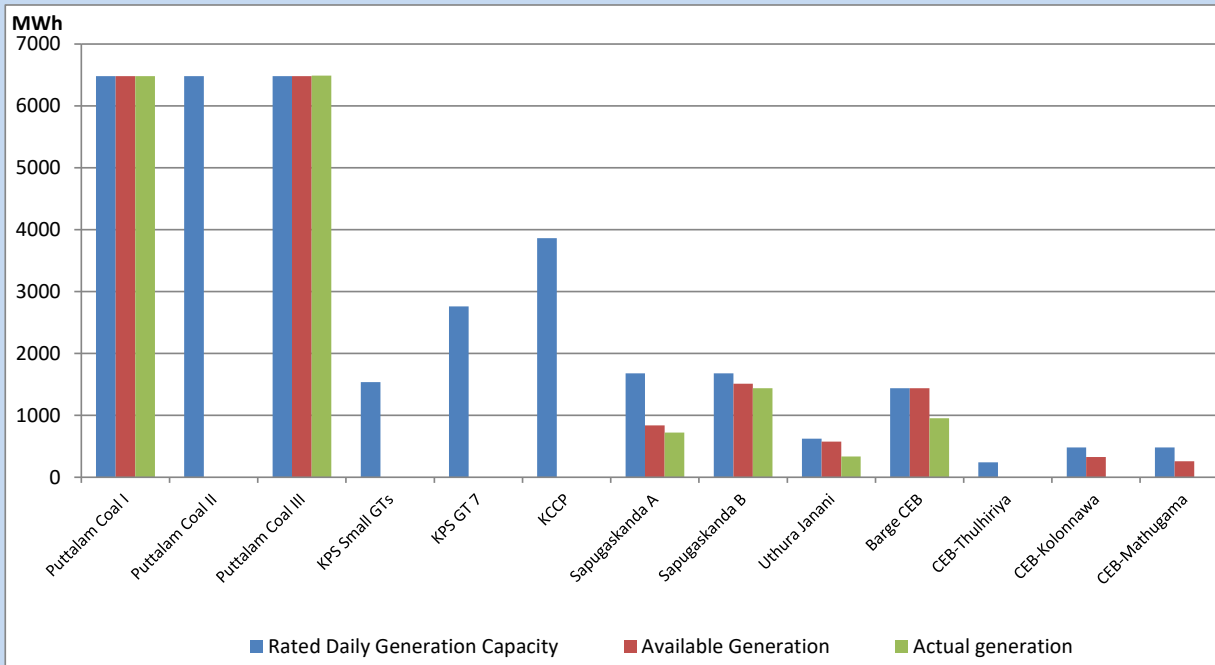
Category	Dispatch (GWh)	Percentage
CEB Hydro	477.20	48.72%
CEB Thermal Oil	41.79	4.27%
CEB Coal	289.88	29.59%
IPP Thermal	18.99	1.94%
SPP Wind	42.42	4.33%
CEB Wind	52.34	5.34%
SPP Solar	7.77	0.79%
SPP Solid Waste	4.92	0.50%
Mini Hydro	44.25	4.52%
Total	979.56	

For Current Year

Category	Dispatch (GWh)	Percentage
CEB Hydro	3,610.9	33.24%
CEB Thermal Oil	1,154.1	10.62%
CEB Coal	4,003.0	36.85%
IPP Thermal	1,045.9	9.63%
SPP Wind	273.2	2.52%
CEB Wind	298.4	2.75%
SPP Solar	70.0	0.64%
SPP Solid Waste	54.1	0.50%
Mini Hydro	354.3	3.26%
Total	10,863.7	

CEB owned Thermal Plant Dispatch

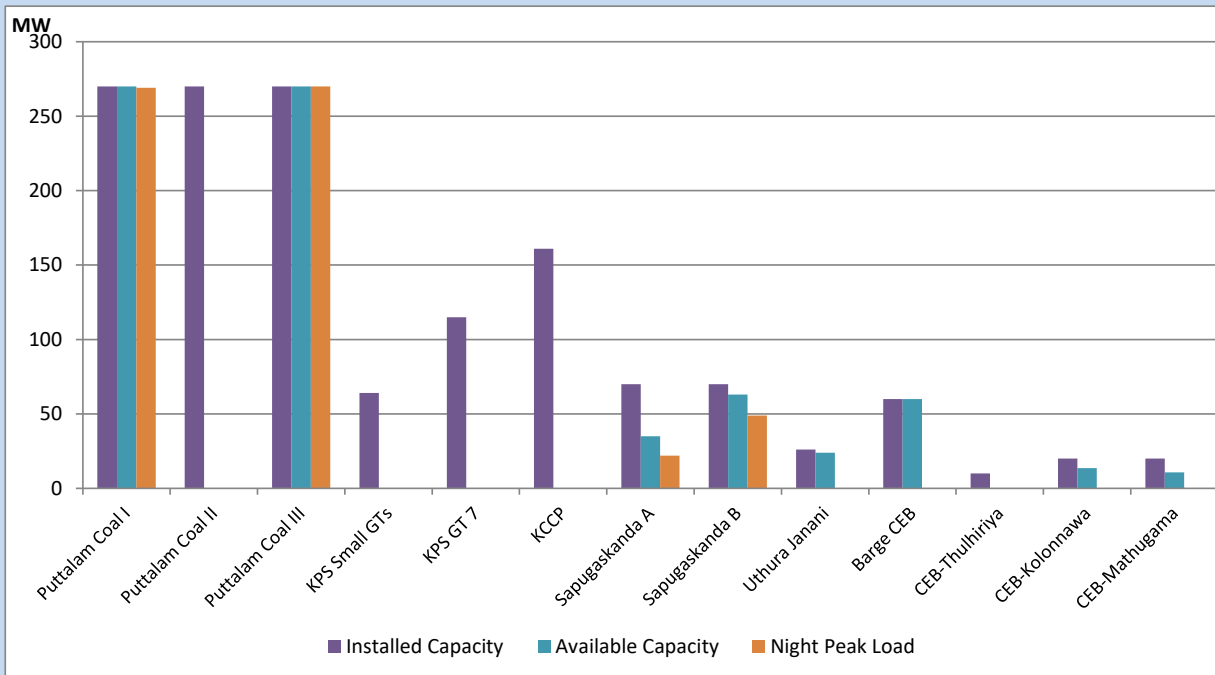
September 25, 2022



Available Generation is estimated based on plant availability at 6.00am on

September 26, 2022

CEB owned Thermal Plant Loading at the Night Peak



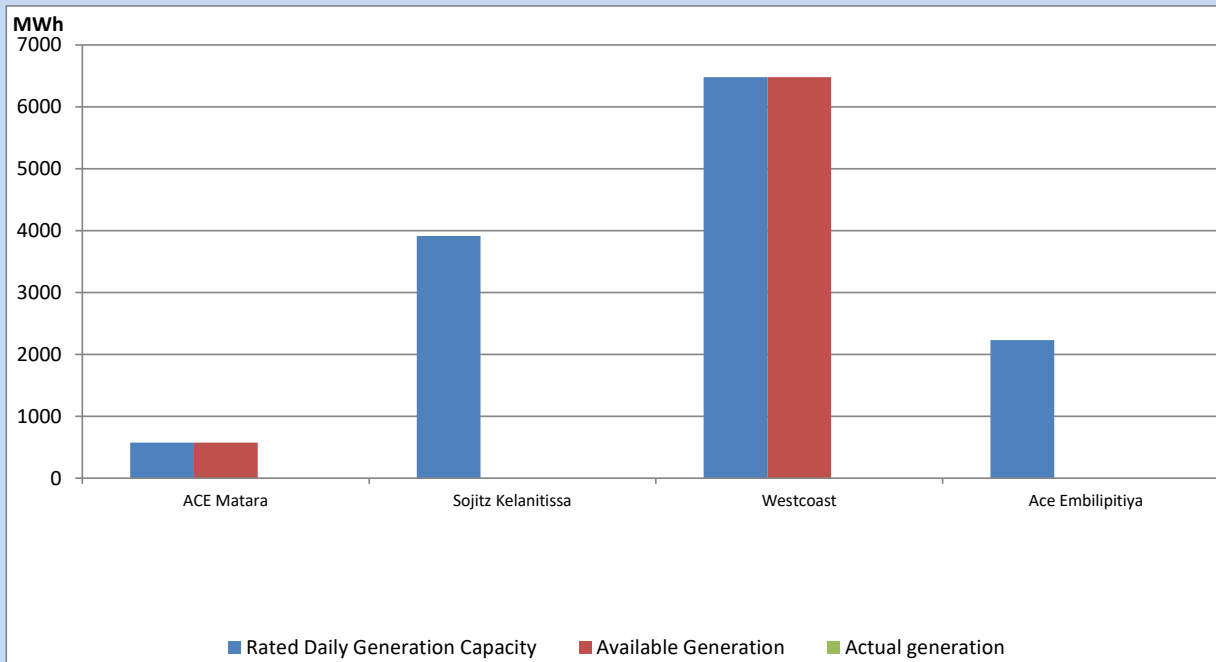
Note- Plant availability is recorded at 6.00 am on

September 26, 2022

IPP owned Thermal Plant Dispatch

September 25, 2022

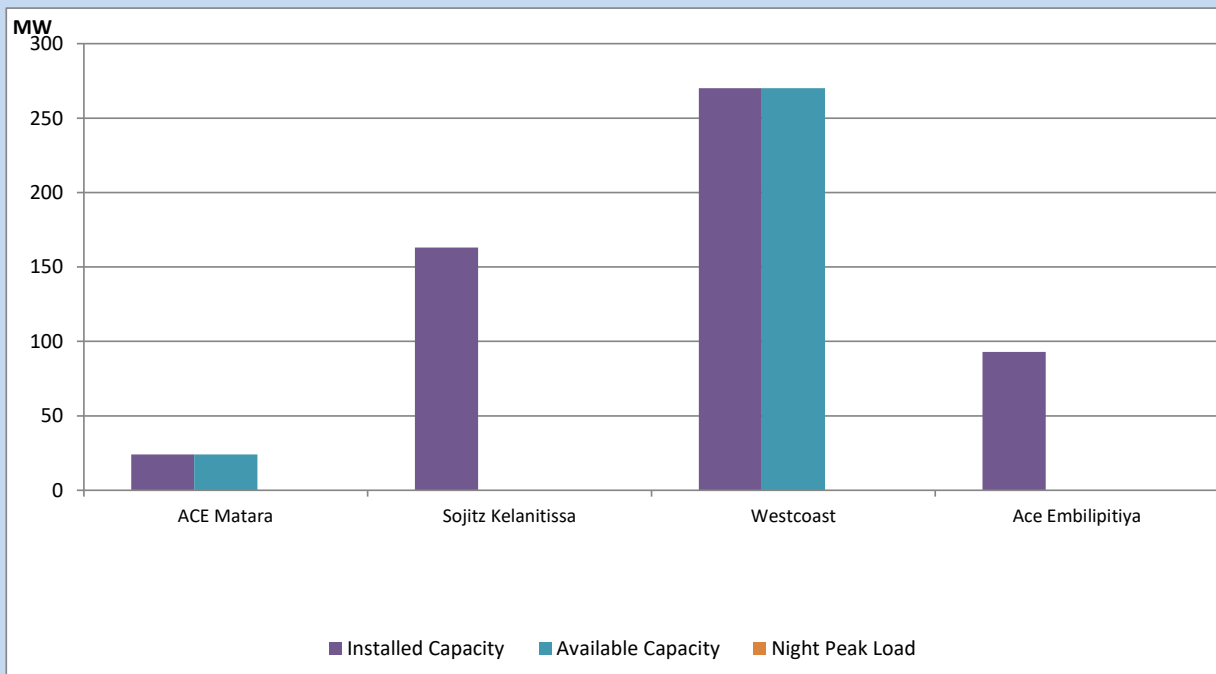
Asia Power, V Power Pallekale, Vpower Galle, V Power Horana, Vpower Hambantota, Vpower Valachchena and Altaqa Mahiyanganaya are not available due to expiration of PPAs



Available Generation is estimated based on plant availability at 6.00am on

September 26, 2022

IPP owned Thermal Plant Loading at the Night Peak

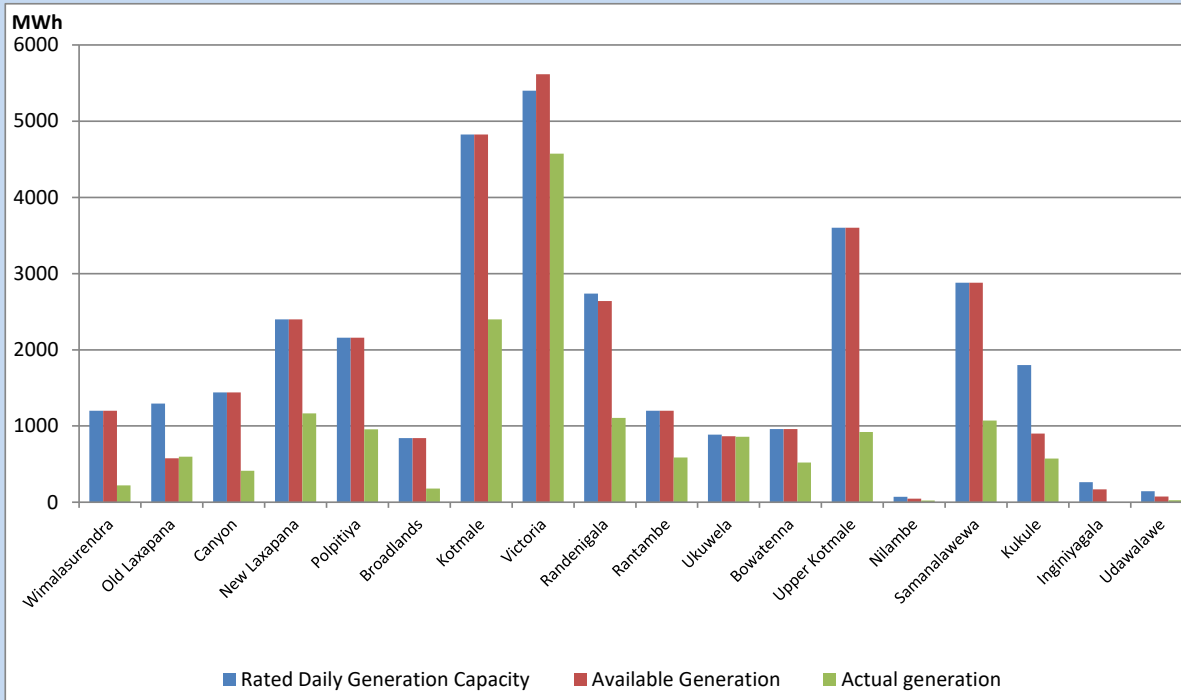


Note- Plant availability is recorded at 6.00 am on

September 26, 2022

Major Hydro Plant Dispatch

September 25, 2022

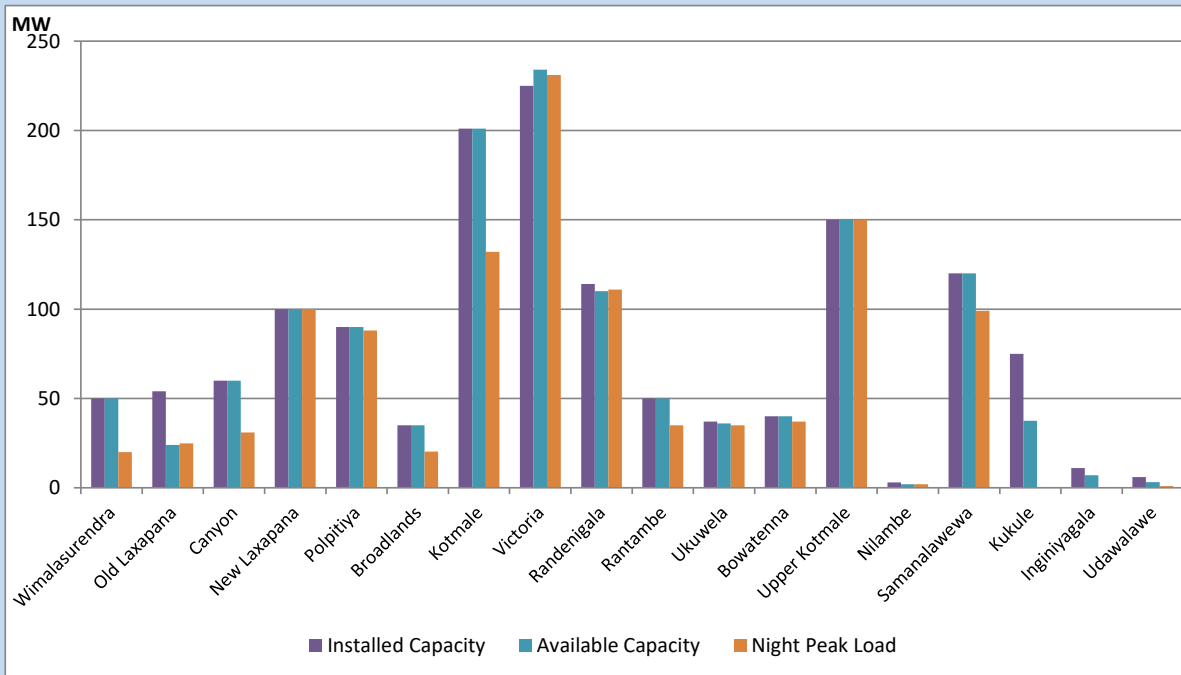


Available Generation is estimated based on plant availability at 6.00am on
Broadlands power plant is operating in the Commissioning Stage

September 26, 2022

Major Hydro Plant Loading at Night Peak

September 25, 2022



Note- Plant availability is recorded at 6.00 am on
Broadlands power plant is operating in the Commissioning Stage

September 26, 2022

Summary of Major Plant performance

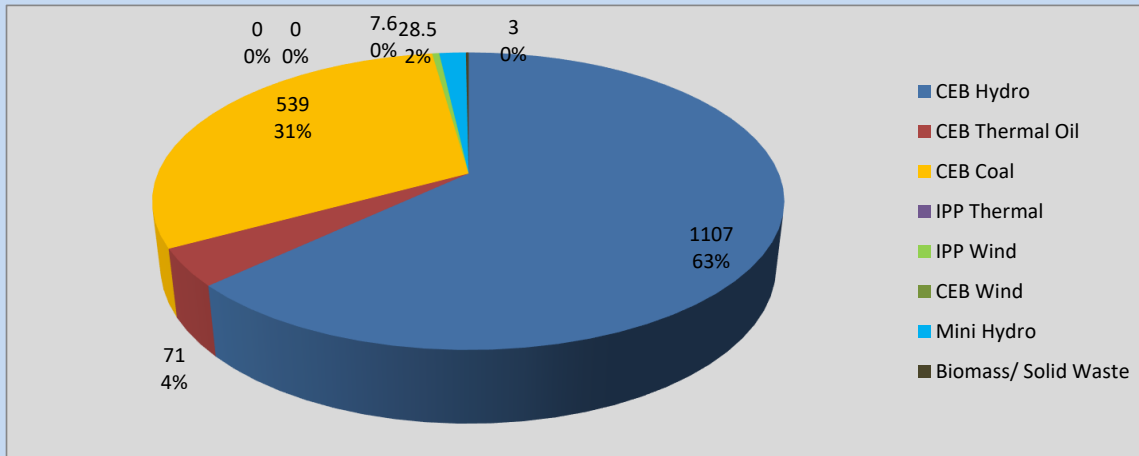
Plant	Installed Capacity	Plant Availability	Night peak Load	Plant Dispatch
	(MW)	(MW)	(MW)	(MWh)
Wimalasurendra	50	50	20	222
Old Laxapana	54	24	25	597
Canyon	60	60	31	414
New Laxapana	100	100	100	1,166
Polpitiya	90	90	88	955
Broadlands	35	35	20	179
Kotmale	201	201	132	2,400
Victoria	225	234	231	4,575
Randenigala	114	110	111	1,105
Rantambe	50	50	35	587
Ukuwela	37	36	35	858
Bowatenna	40	40	37	521
Upper Kotmale	150	150	150	921
Nilambe	3	2	2	23
Samanalawewa	120	120	99	1,071
Kukule	75	38	0	572
Inginiyagala	11	7	0	0
Udawalawe	6	3	1	27
Puttalam Coal I	270	270	269	6,482
Puttalam Coal II	270	0	0	0
Puttalam Coal III	270	270	270	6,492
KPS Small GTs	64	0	0	0
KPS GT 7	115	0	0	0
KCCP	161	0	0	0
Sapugaskanda A	70	35	22	724
Sapugaskanda B	70	63	49	1,439
Uthura Janani	26	24	0	337
Barge CEB	60	60	0	952
CEB-Thulhiriya	10	0	0	0
CEB-Kolonnawa	20	14	0	0
CEB-Mathugama	20	11	0	0
ACE Matara	24	24	0	0
Sojitz Kelanitissa	163	0	0	0
West Coast	270	270	0	0
ACE Embilipitiya	93	0	0	0
Total	3,397	2,390	1,766	34,826

Plant availability is the availability recorded at 6 am on

September 26, 2022

Contribution to the Night Peak in MW

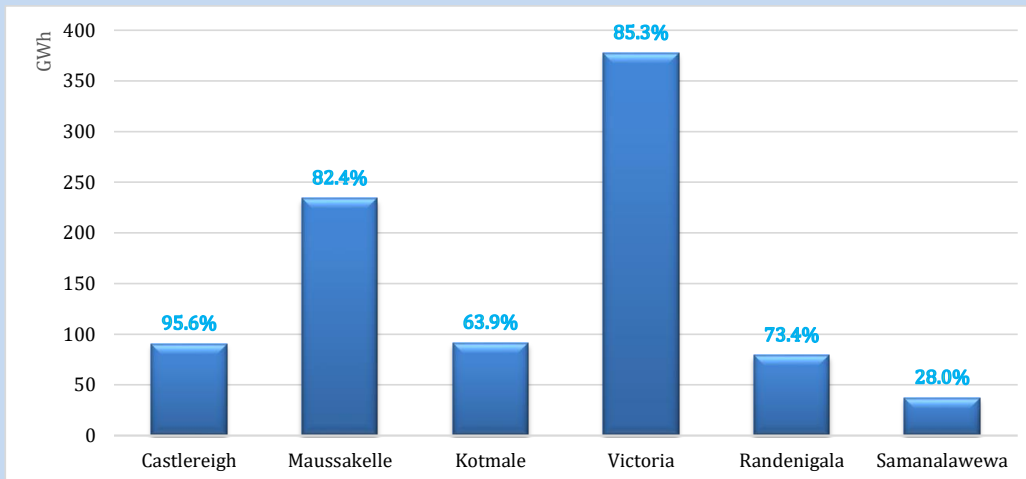
September 25, 2022



Night Peak*	1,756.3 MW
Day Peak	1,380.0 MW
Minimum Demand	1,283.1 MW

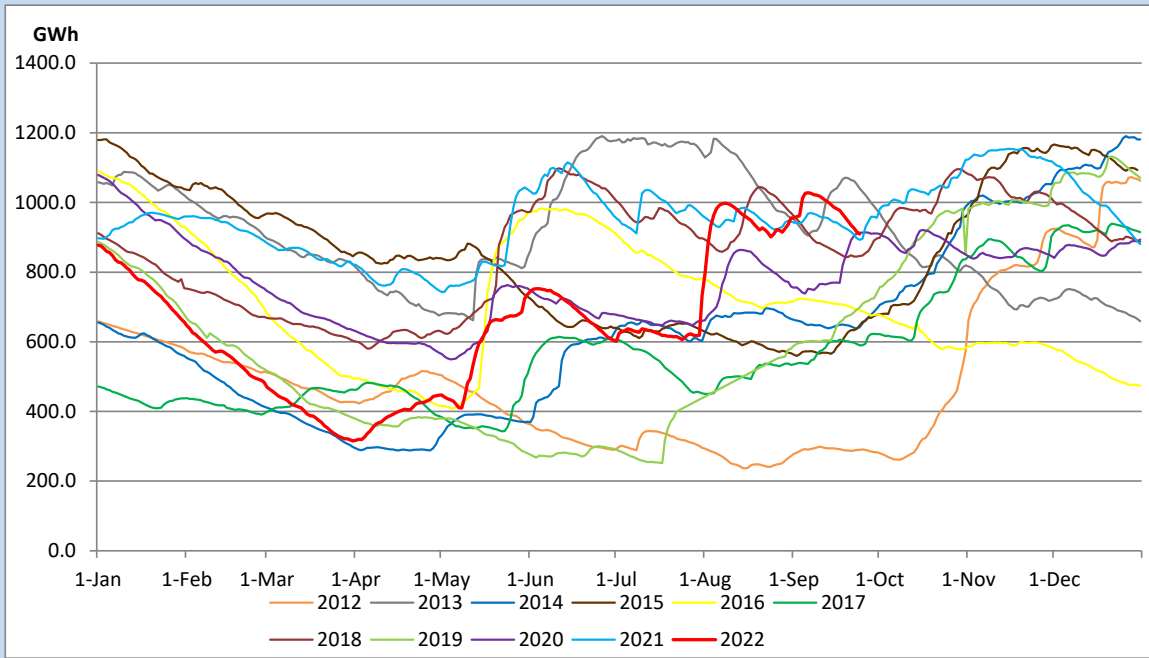
Above figures are excluding contribution from Roof Top Solar, 1MW solar, certain Wind plants and Mini Hydro plants

Reservoir Levels - as at 06.00 Hr on September 26, 2022

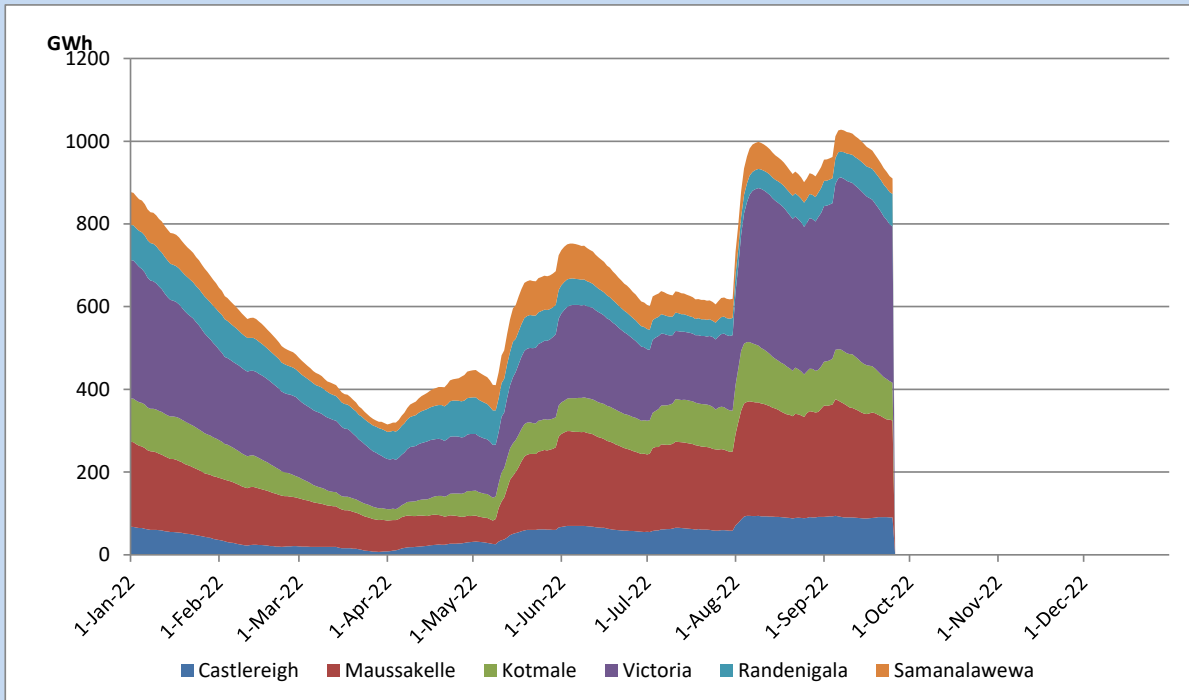


Total Reservoir Level	909.7 GWh
% of Total capacity	75.5%

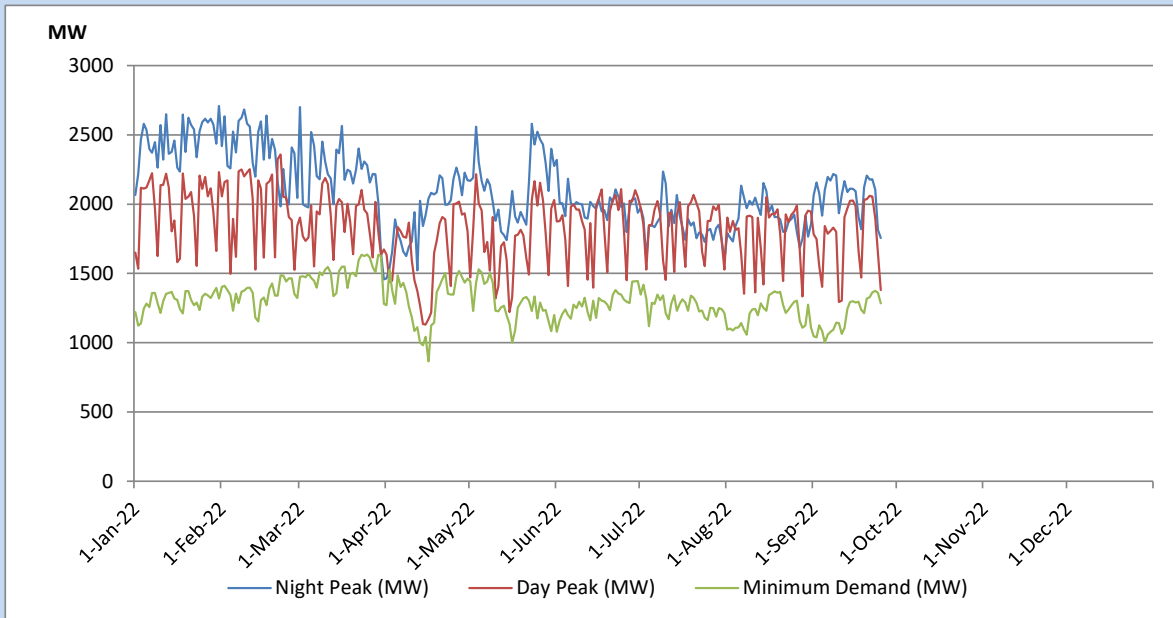
Comparison of Total Reservoir Storage Levels with Past Years



Variation of Major Hydro Reservoir Levels in the current year (GWh)



Variation of Demand during the current year

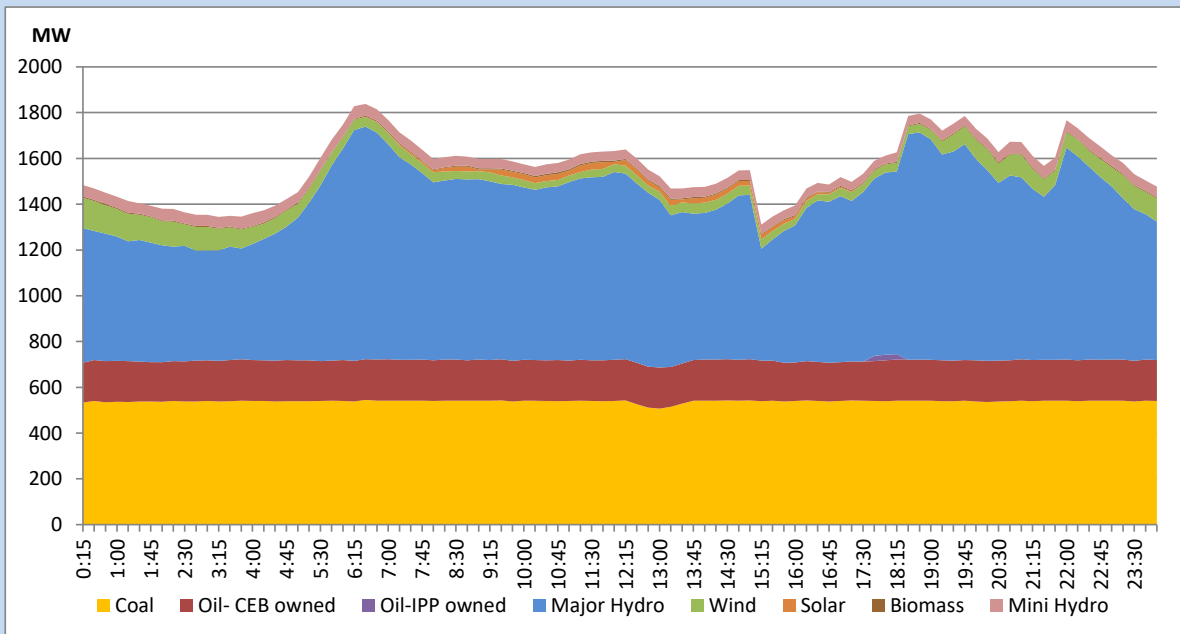


The above figures are excluding contribution from Roof Top Solar, 1MW solar, certain Wind plants and Mini Hydro plants

Daily Load Curve of the Previous day

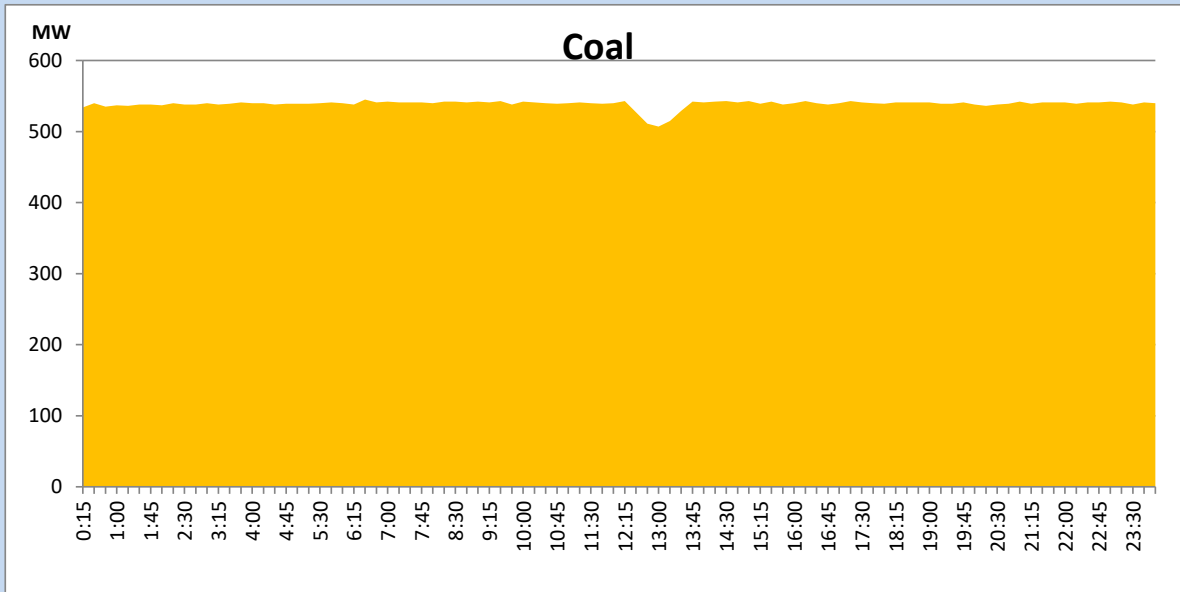
September 24, 2022

Solar and wind data is based on Telemetered Power Stations only



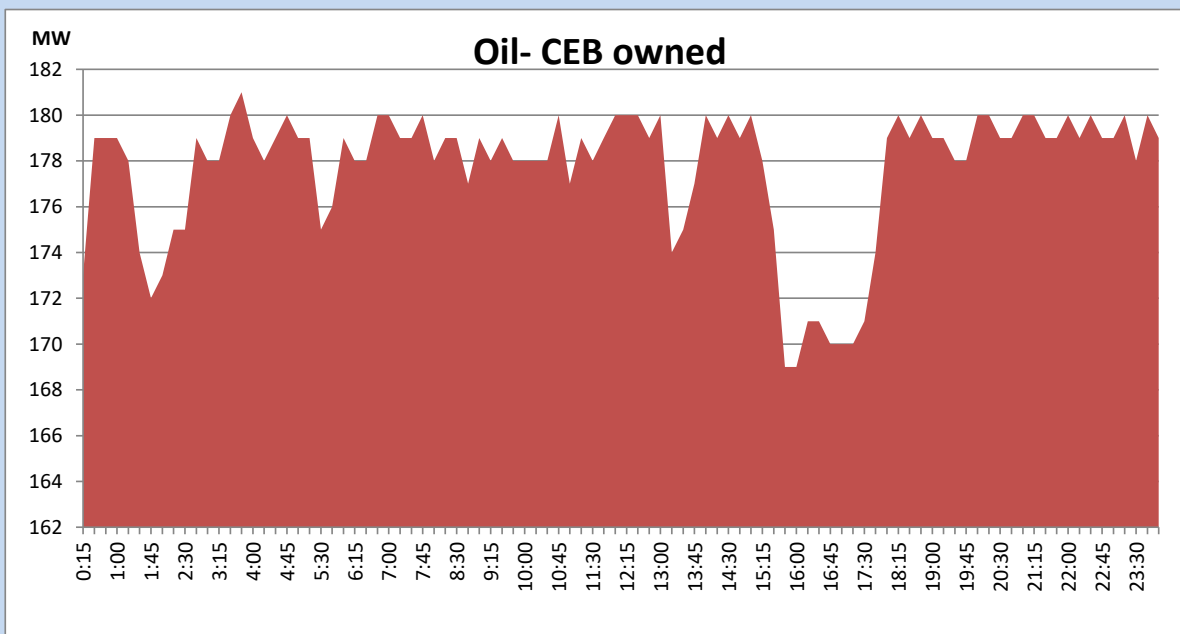
Coal Generation during the Previous day

September 24, 2022



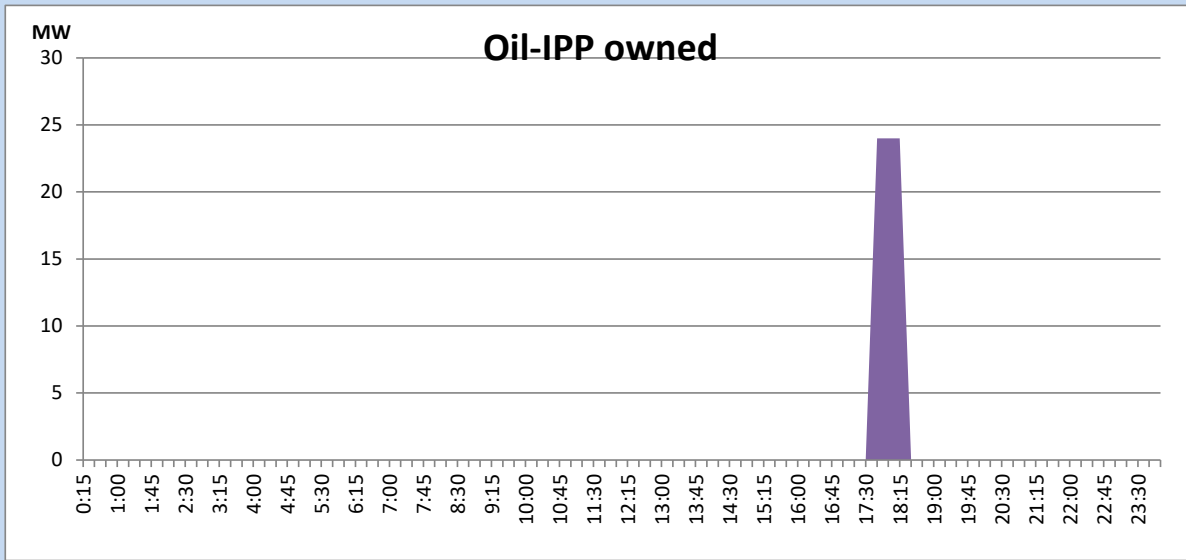
CEB Oil Plant Generation during the Previous day

September 24, 2022



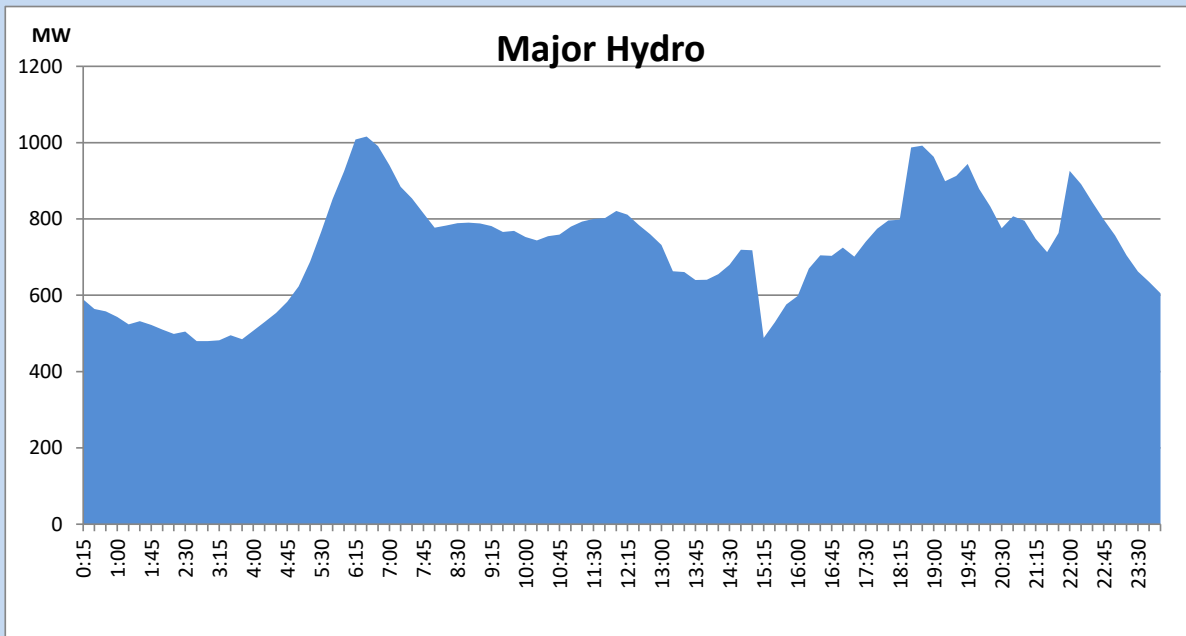
IPP Oil Plant Generation during the Previous day

September 24, 2022



Major Hydro Generation during the Previous day

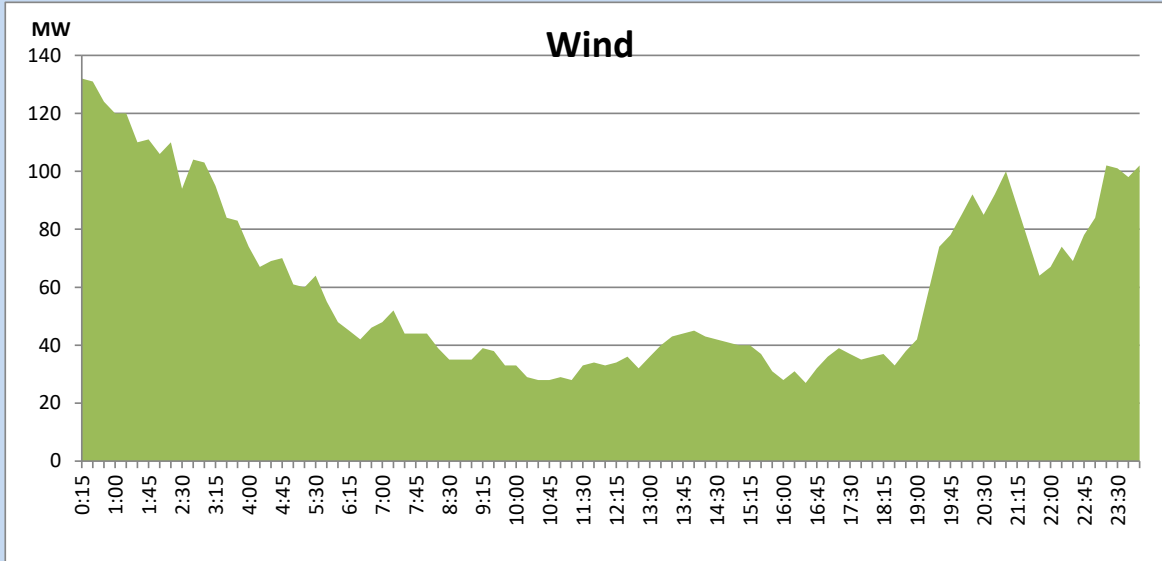
September 24, 2022



Wind Generation during the Previous day

September 24, 2022

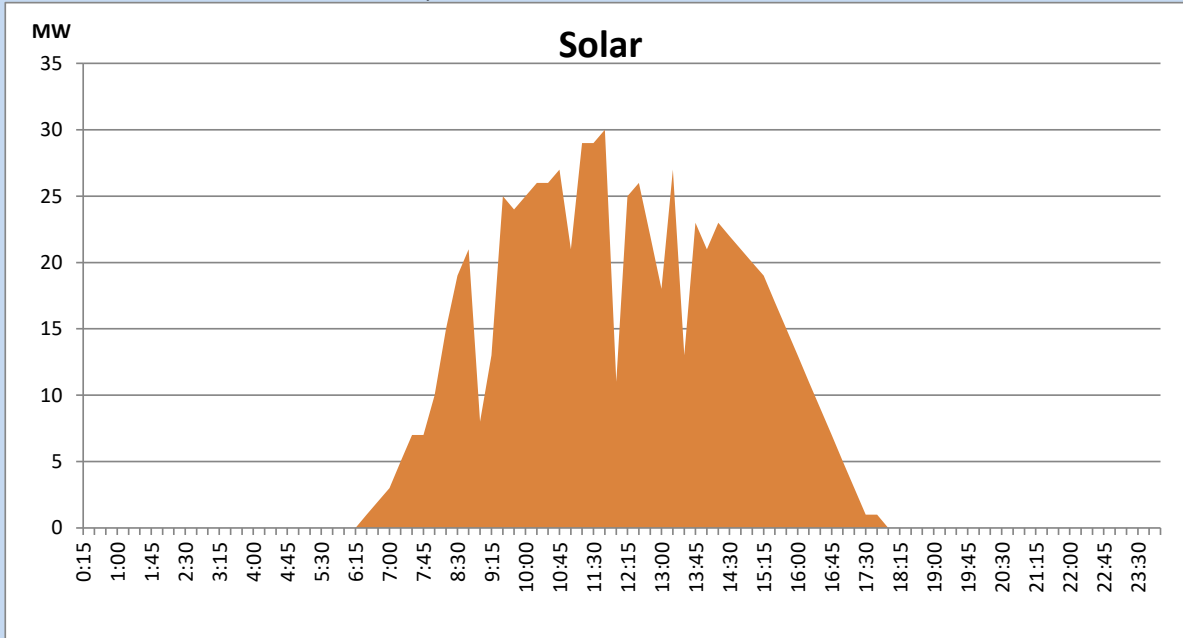
Based on Telemetered Power Stations only



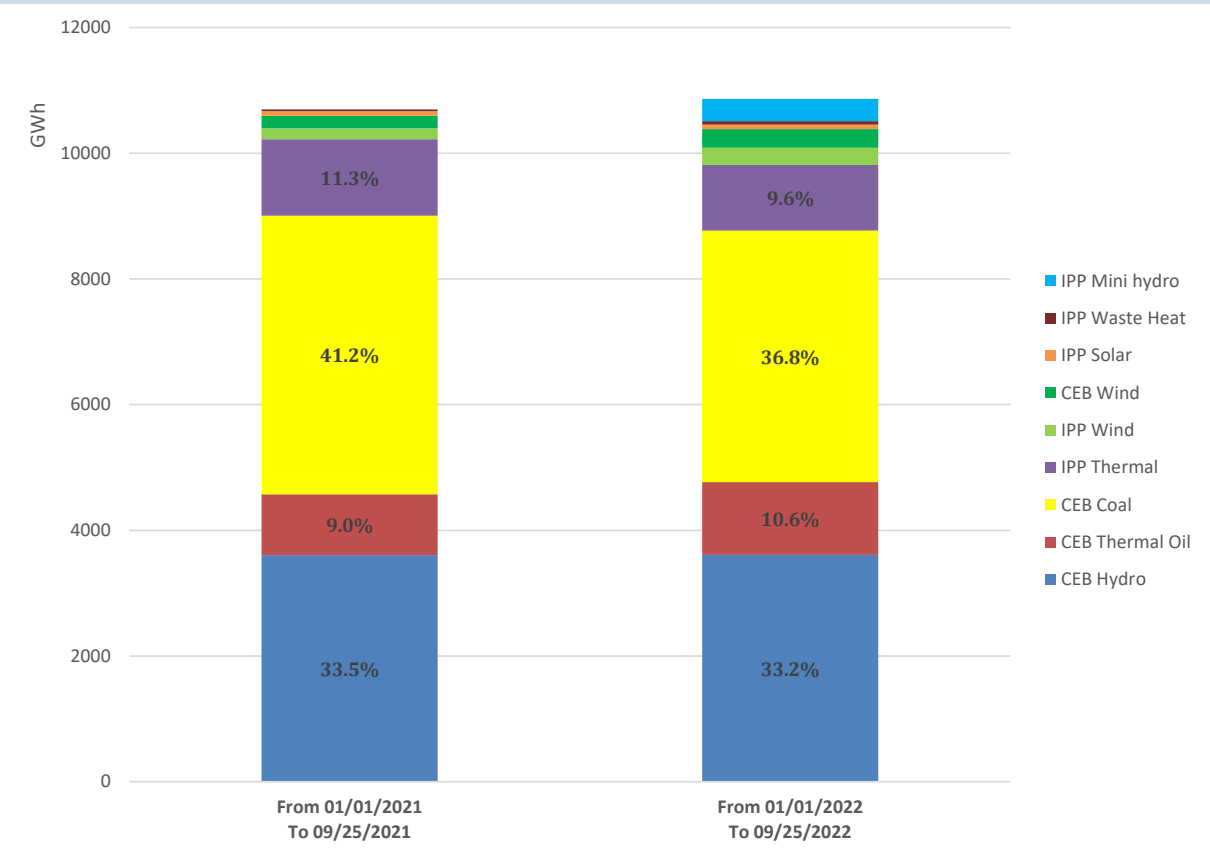
Solar Generation during the Previous day

September 24, 2022

Based on Telemetered Power Stations only



Cumulative Dispatch Comparison with Last Year



Thermal Plant Fuel types

Power Station	Primary Fuel
CEB Thermal	
Sapugaskanda 1	Heavy Fuel
Sapugaskanda 2	Heavy Fuel
Kelanitissa Small Gas Turbines	Auto Diesel
GT 7 - Kelanitissa	Auto Diesel
Kelanitissa CCY	Naphtha or Diesel
Lakvijaya 1	Coal
Lakvijaya 2	Coal
Lakvijaya 3	Coal
Uthuru Janani	Heavy Fuel
Barge CEB	Heavy Fuel

Power Station	Primary Fuel
Private Thermal	
Sojitz - Kelanitissa	Auto Diesel
West Coast	Auto Diesel / Heavy Fuel
ACE Matara	Heavy Fuel
ACE Embilipitiya	Heavy Fuel

Major Incidents during the day -as reported by CEB morning of

September 26, 2022

- 1) Rotational manual load shedding was carried out from 15:00hrs to 22:00hrs.
- 2) New Laxapana Unit 01 which was tripped at 05:35hrs, made available at 6:15hrs.
- 3) Maho 33kV bus section CB which tripped at 03:34hrs, was normalized at 11:16hrs.
- 4) N'Habarana 220/132/33kV T/F 02 tripped at 12:27hrs due to the operation of sudden pressure mechanical trip. The T/F is yet to be restored.
- 5) Kotugoda 220/132/33kV T/F 02 which was tripped at 15:13hrs, restored at 14:59hrs.
- 6) Biyagama-Pannipitiya cct 01 tripped & A/R from both ends at 18:14hrs due to the operation of differential protection. At the same time Kukule Gen 01 tripped by activation of under voltage protection. Kukule gen-01 resumed generation at 18:55hrs.