

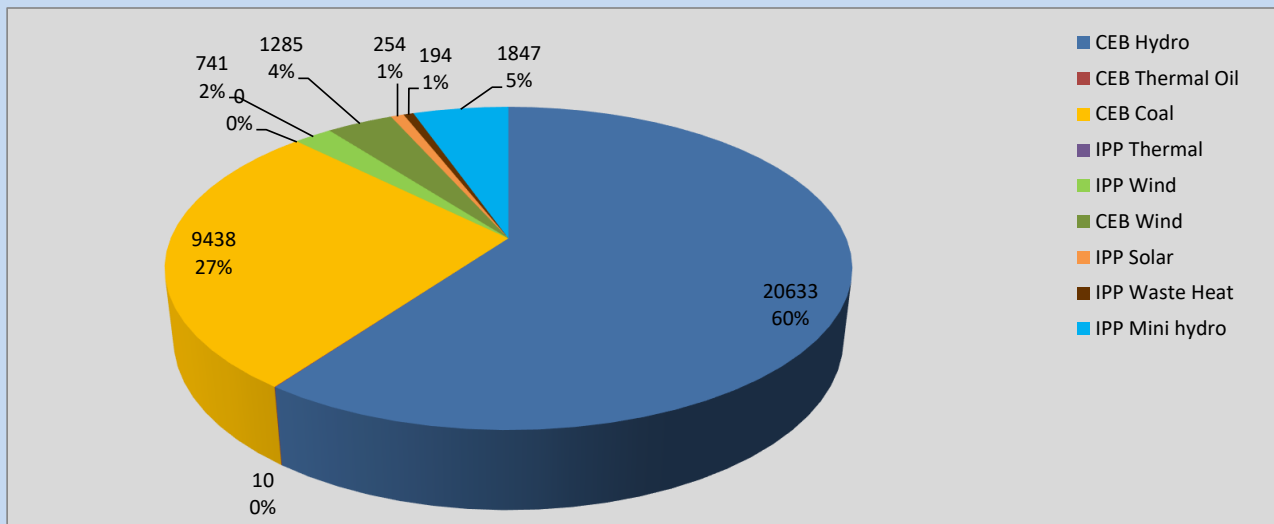
Generation and Reservoirs Statistics

October 24, 2022



PUBLIC UTILITIES COMMISSION OF SRI LANKA

Daily Generation Mix in MWh



Total Generation **34,402 MWh**

Note: Above data is excluding contribution from Roof Top Solar, 1MW Solar and certain Mini Hydro plants

Cumulative Dispatch

Note: Following data is Excluding contribution from Roof Top Solar, 1MW solar and Mini Hydro plants

For Current Month

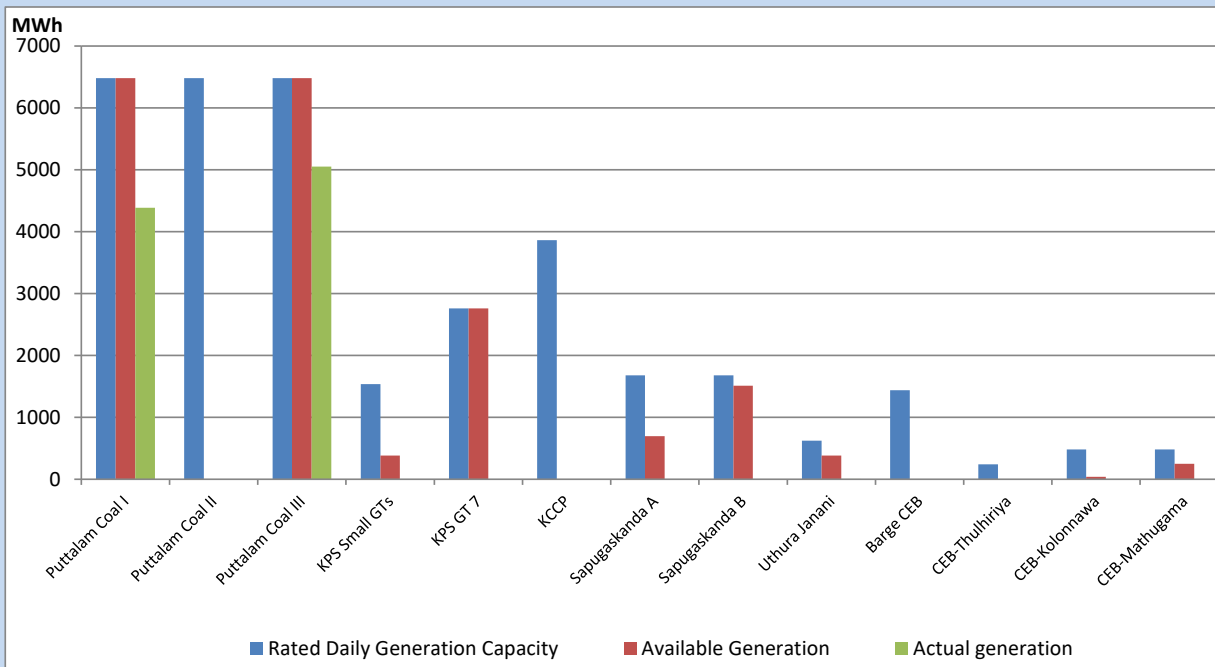
Category	Dispatch (GWh)	Percentage
CEB Hydro	471.57	53.60%
CEB Thermal Oil	38.26	4.35%
CEB Coal	273.25	31.06%
IPP Thermal	7.63	0.87%
SPP Wind	19.91	2.26%
CEB Wind	19.32	2.20%
SPP Solar	6.45	0.73%
SPP Solid Waste	4.09	0.46%
Mini Hydro	39.28	4.46%
Total	879.76	

For Current Year

Category	Dispatch (GWh)	Percentage
CEB Hydro	4,171.8	34.91%
CEB Thermal Oil	1,217.0	10.18%
CEB Coal	4,314.4	36.11%
IPP Thermal	1,083.4	9.07%
SPP Wind	300.9	2.52%
CEB Wind	325.4	2.72%
SPP Solar	77.8	0.65%
SPP Solid Waste	59.0	0.49%
Mini Hydro	399.8	3.35%
Total	11,949.1	

CEB owned Thermal Plant Dispatch

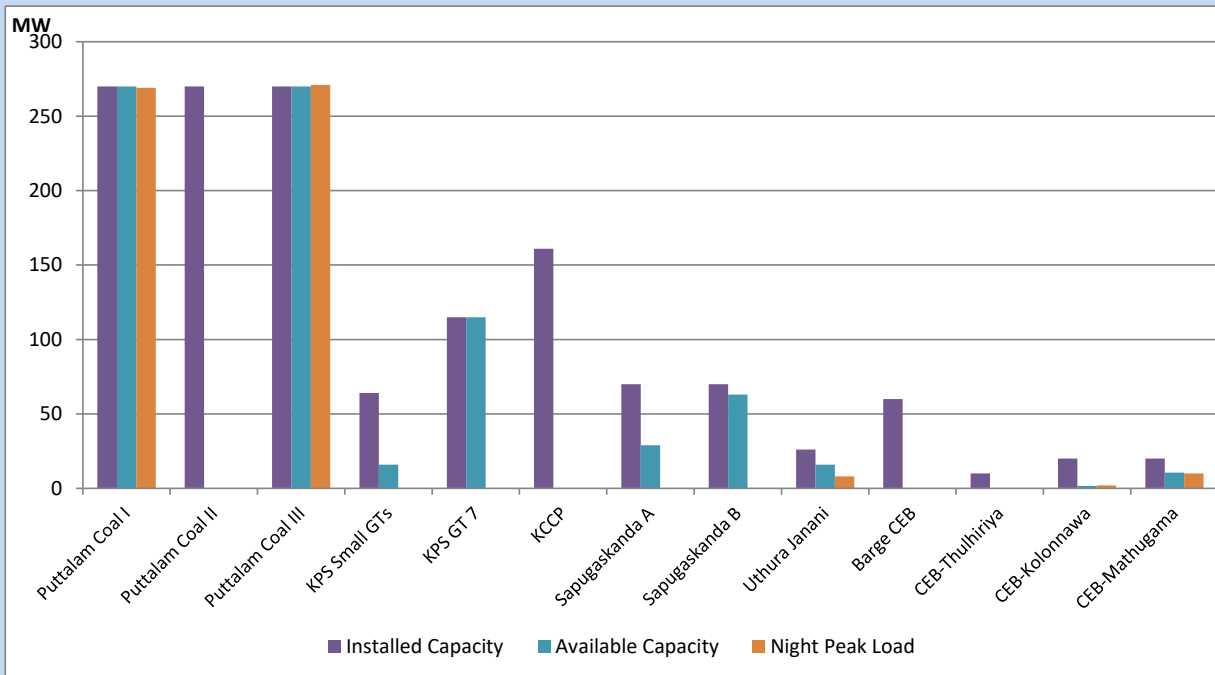
October 24, 2022



Available Generation is estimated based on plant availability at 6.00am on

October 25, 2022

CEB owned Thermal Plant Loading at the Night Peak



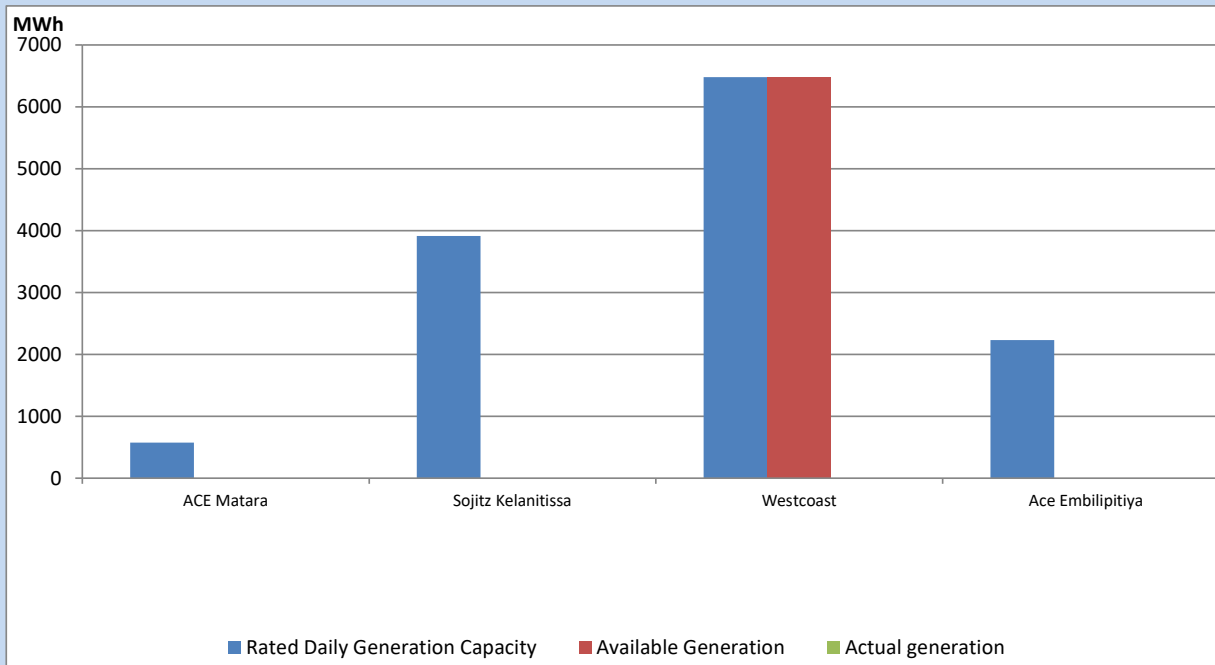
Note- Plant availability is recorded at 6.00 am on

October 25, 2022

IPP owned Thermal Plant Dispatch

October 24, 2022

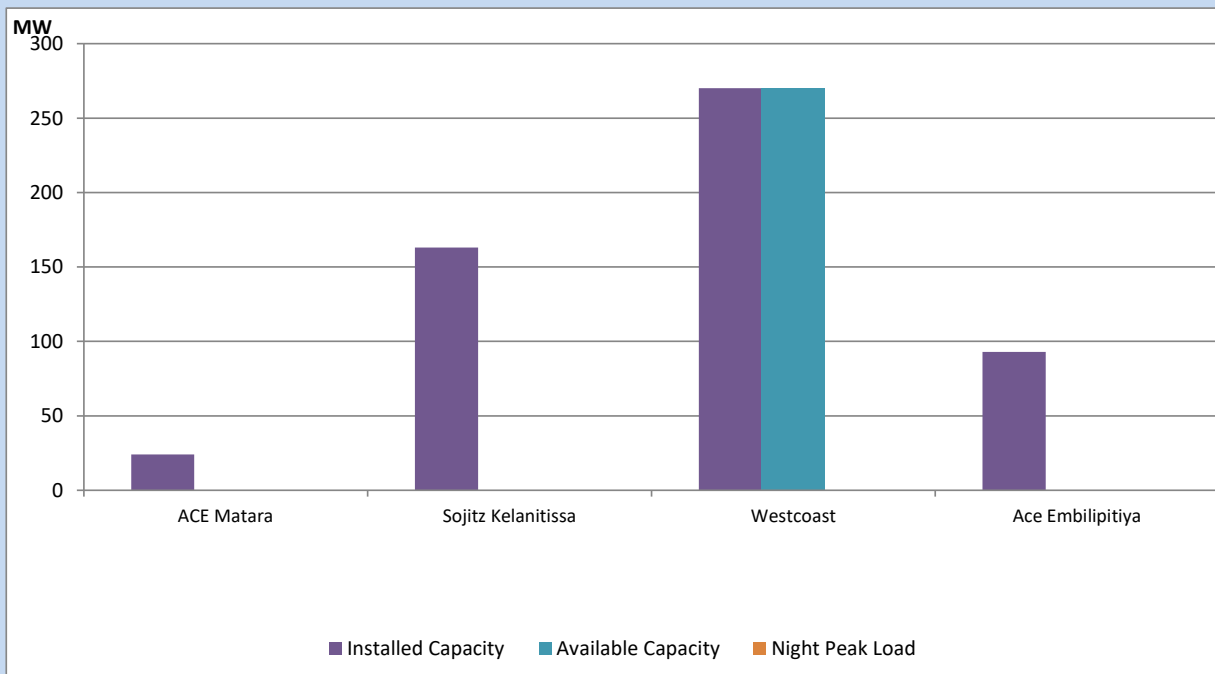
Asia Power, V Power Pallekale, Vpower Galle, V Power Horana, Vpower Hambantota, Vpower Valachchena and Altaqa Mahiyanganaya are not available due to expiration of PPAs



Available Generation is estimated based on plant availability at 6.00am on

October 25, 2022

IPP owned Thermal Plant Loading at the Night Peak

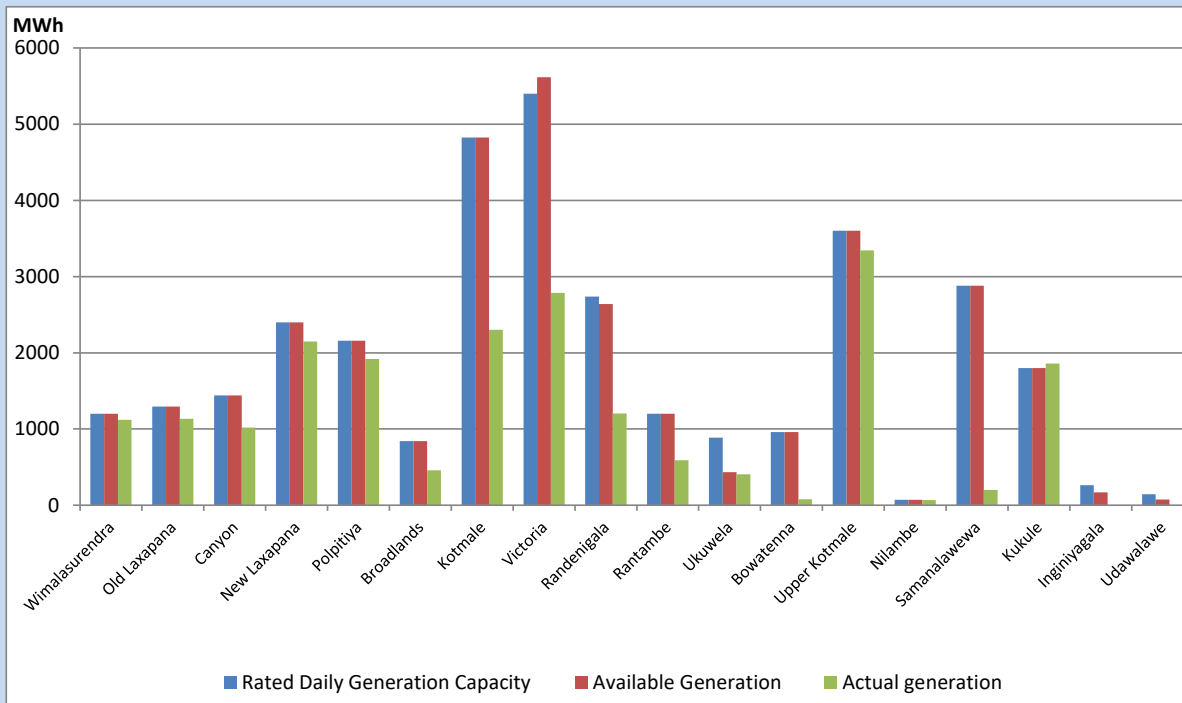


Note- Plant availability is recorded at 6.00 am on

October 25, 2022

Major Hydro Plant Dispatch

October 24, 2022

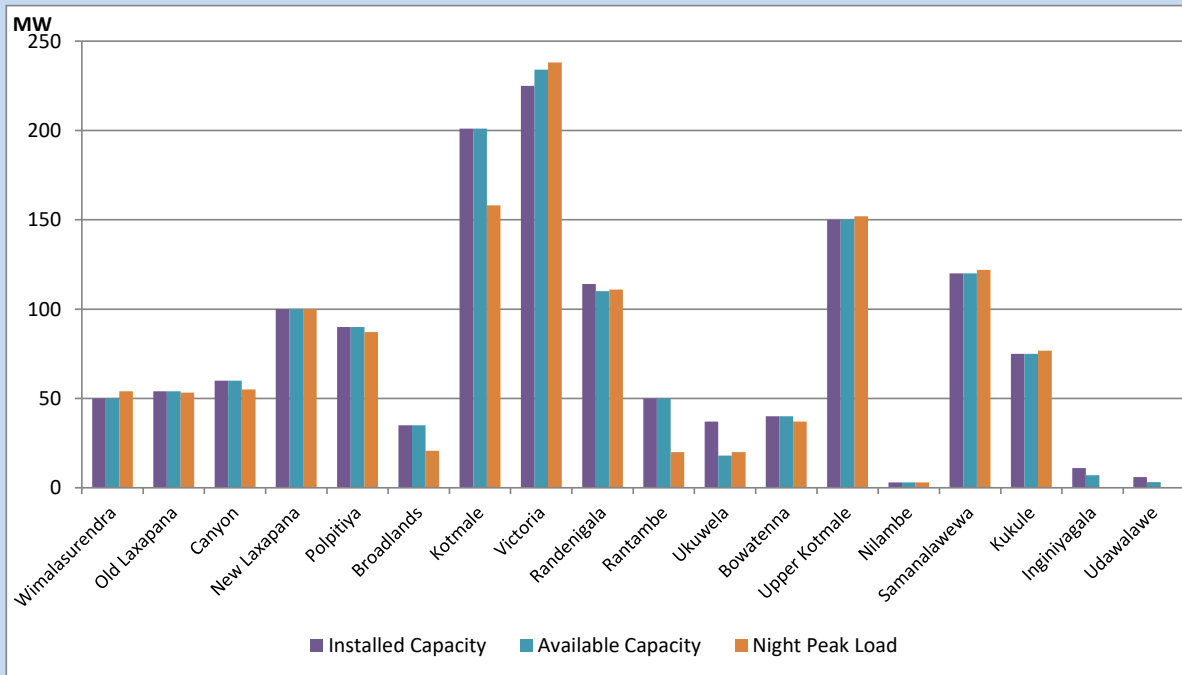


Available Generation is estimated based on plant availability at 6.00am on
Broadlands power plant is operating in the Commissioning Stage

October 25, 2022

Major Hydro Plant Loading at Night Peak

October 24, 2022



Note- Plant availability is recorded at 6.00 am on
Broadlands power plant is operating in the Commissioning Stage

October 25, 2022

Summary of Major Plant performance

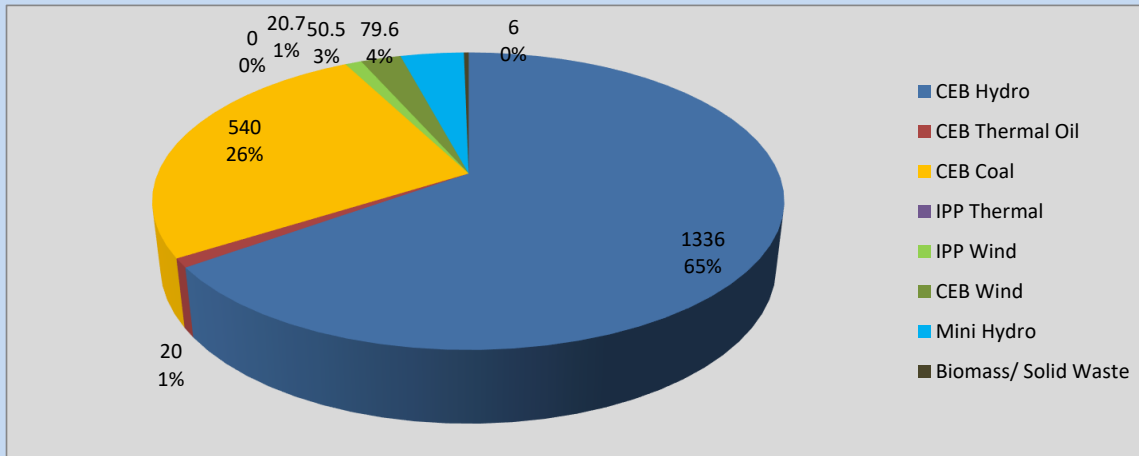
Plant	Installed Capacity	Plant Availability	Night peak Load	Plant Dispatch
	(MW)	(MW)	(MW)	(MWh)
Wimalasurendra	50	50	54	1,121
Old Laxapana	54	54	53	1,133
Canyon	60	60	55	1,018
New Laxapana	100	100	100	2,148
Polpitiya	90	90	87	1,917
Broadlands	35	35	21	457
Kotmale	201	201	158	2,300
Victoria	225	234	238	2,787
Randenigala	114	110	111	1,205
Rantambe	50	50	20	590
Ukuwela	37	18	20	405
Bowatenna	40	40	37	77
Upper Kotmale	150	150	152	3,345
Nilambe	3	3	3	69
Samanalawewa	120	120	122	201
Kukule	75	75	77	1,860
Inginiyagala	11	7	0	0
Udawalawe	6	3	0	0
Puttalam Coal I	270	270	269	4,387
Puttalam Coal II	270	0	0	0
Puttalam Coal III	270	270	271	5,051
KPS Small GTs	64	16	0	0
KPS GT 7	115	115	0	0
KCCP	161	0	0	0
Sapugaskanda A	70	29	0	0
Sapugaskanda B	70	63	0	0
Uthura Janani	26	16	8	5
Barge CEB	60	0	0	0
CEB-Thulhiriya	10	0	0	0
CEB-Kolonnawa	20	2	2	1
CEB-Mathugama	20	11	10	4
ACE Matara	24	0	0	0
Sojitz Kelanitissa	163	0	0	0
West Coast	270	270	0	0
ACE Embilipitiya	93	0	0	0
Total	3,397	2,461	2,025	34,402

Plant availability is the availability recorded at 6 am on

October 25, 2022

Contribution to the Night Peak in MW

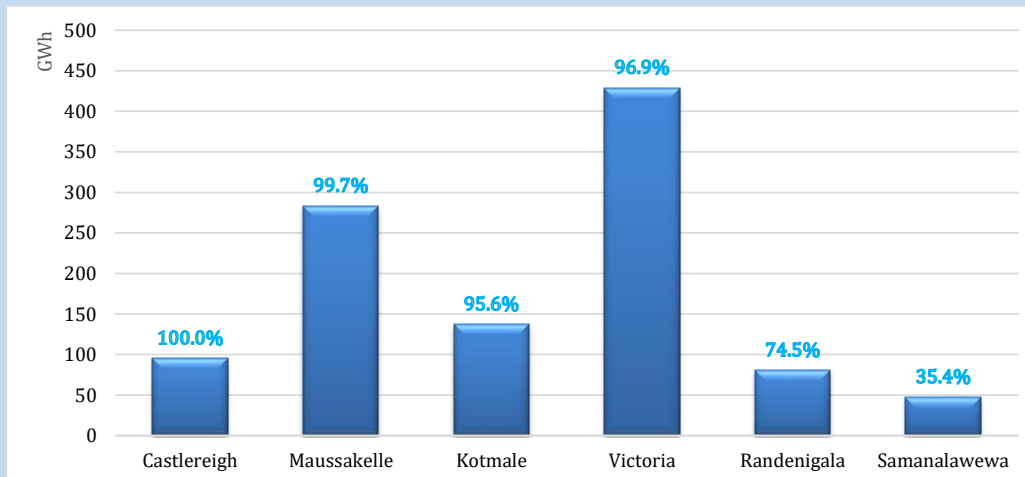
October 24, 2022



Night Peak*	2,052.7 MW
Day Peak	1,632.8 MW
Minimum Demand	885.2 MW

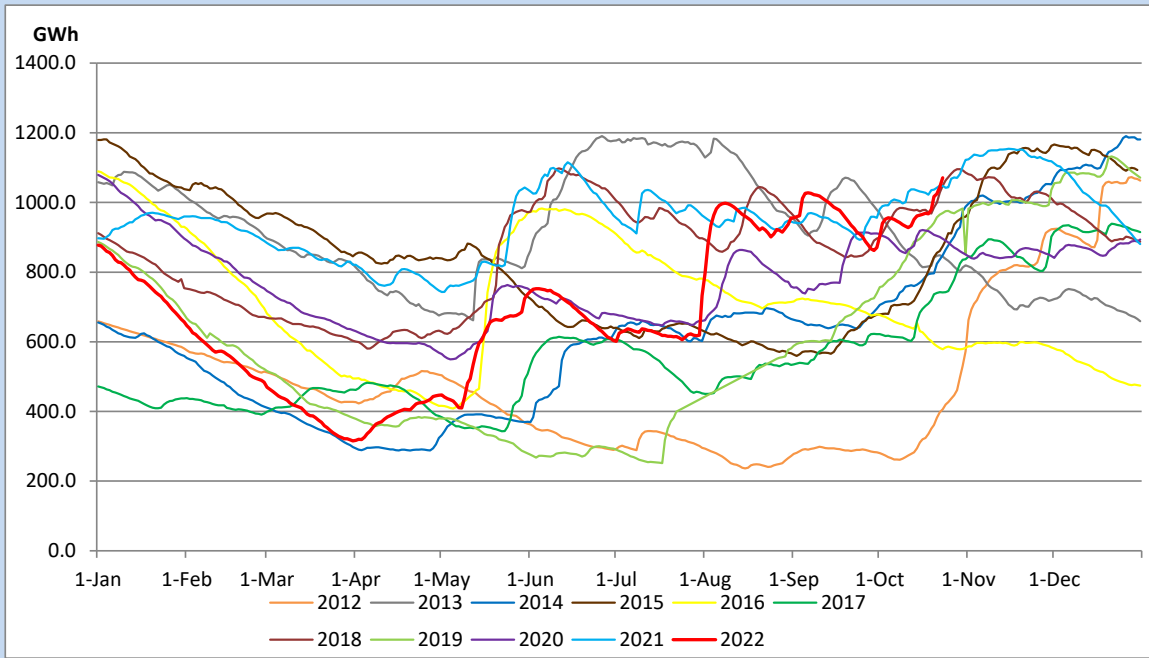
Above figures are excluding contribution from Roof Top Solar, 1MW solar, certain Wind plants and Mini Hydro plants

Reservoir Levels - as at 06.00 Hr on October 25, 2022

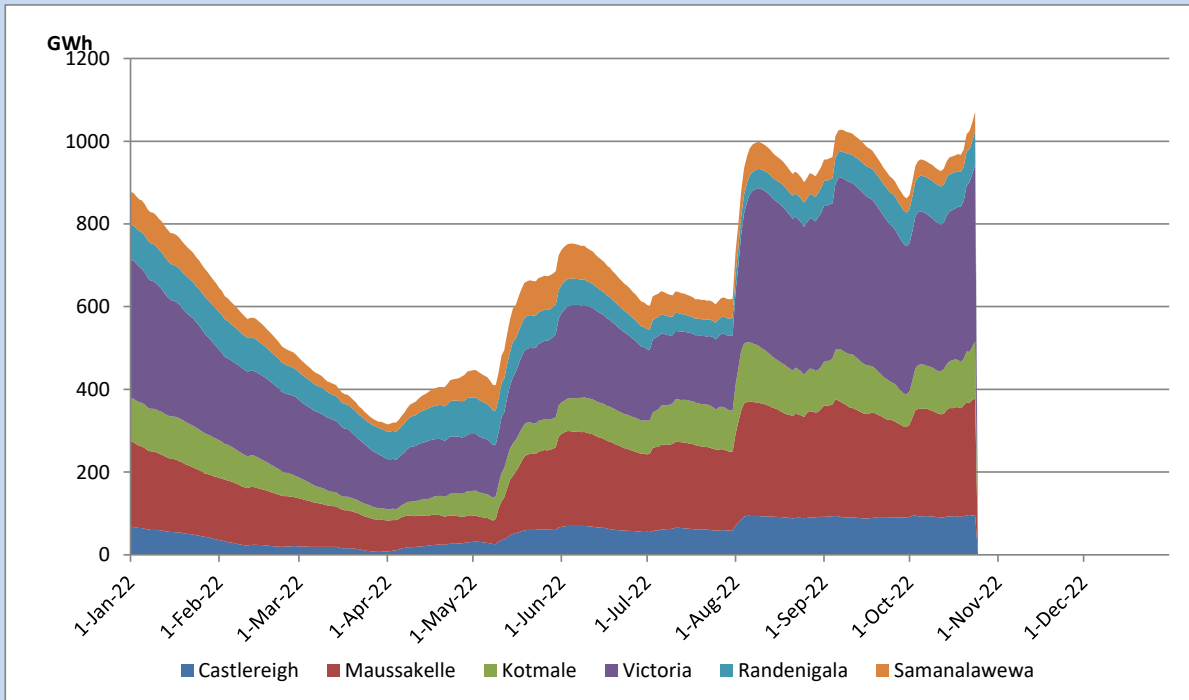


Total Reservoir Level	1070.8 GWh
% of Total capacity	88.9%

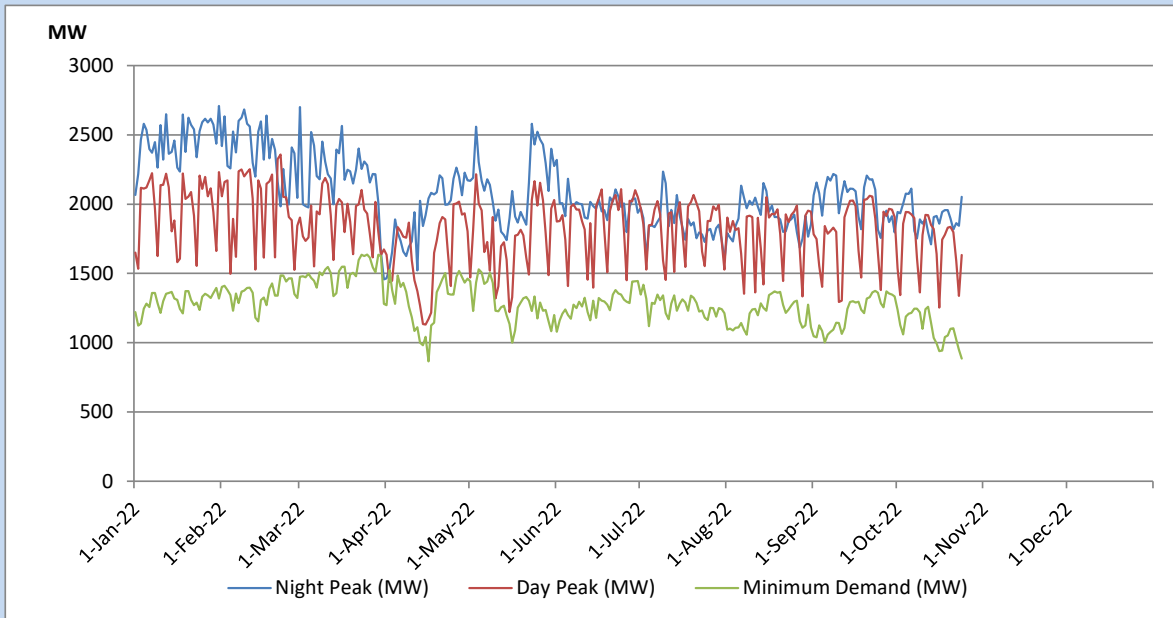
Comparison of Total Reservoir Storage Levels with Past Years



Variation of Major Hydro Reservoir Levels in the current year (GWh)



Variation of Demand during the current year

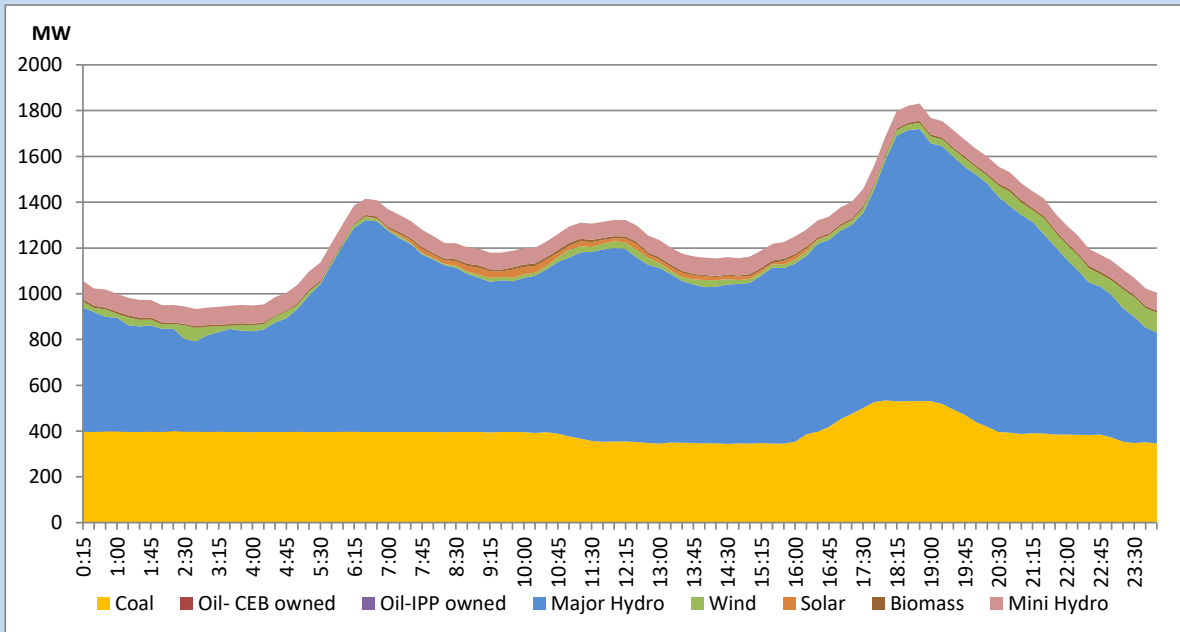


The above figures are excluding contribution from Roof Top Solar, 1MW solar, certain Wind plants and Mini Hydro plants

Daily Load Curve of the Previous day

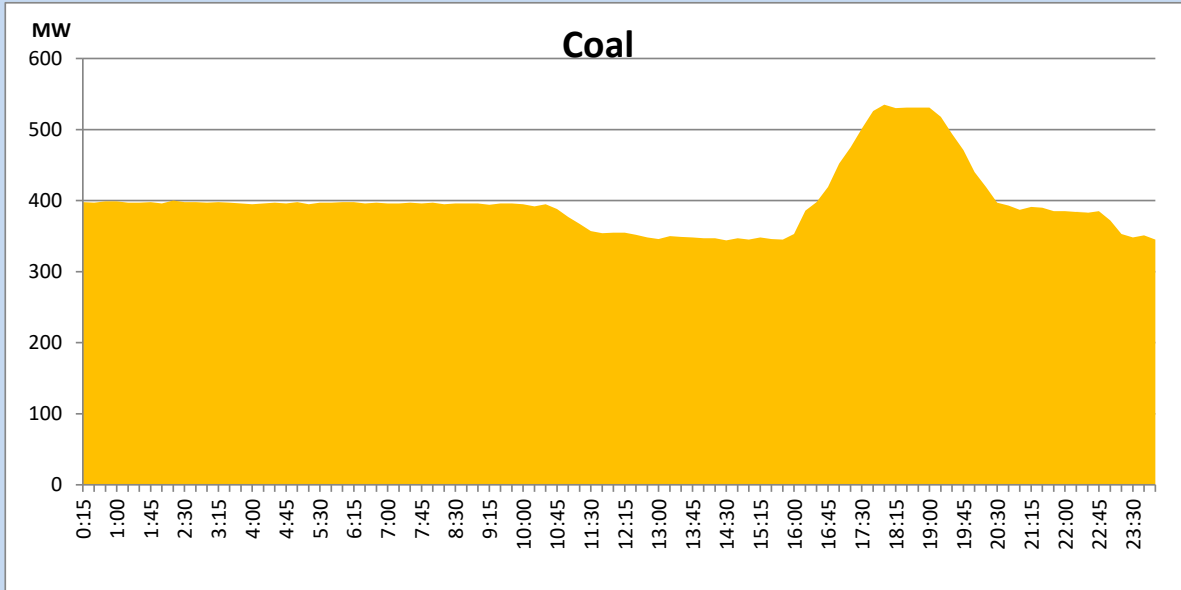
October 23, 2022

Solar and wind data is based on Telemetered Power Stations only



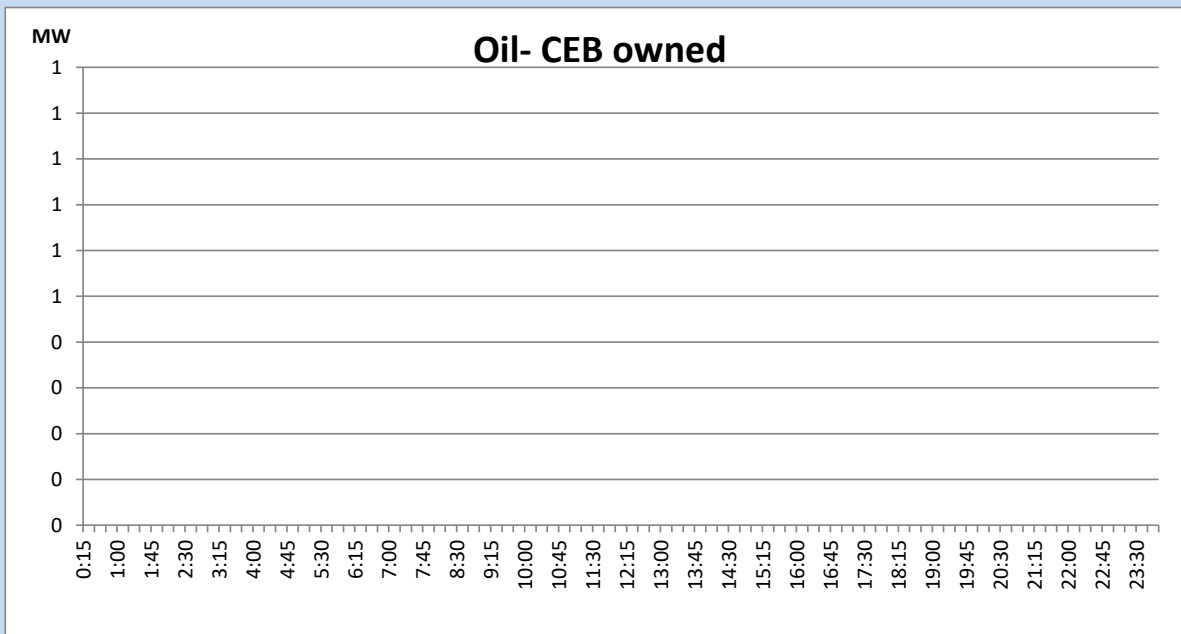
Coal Generation during the Previous day

October 23, 2022



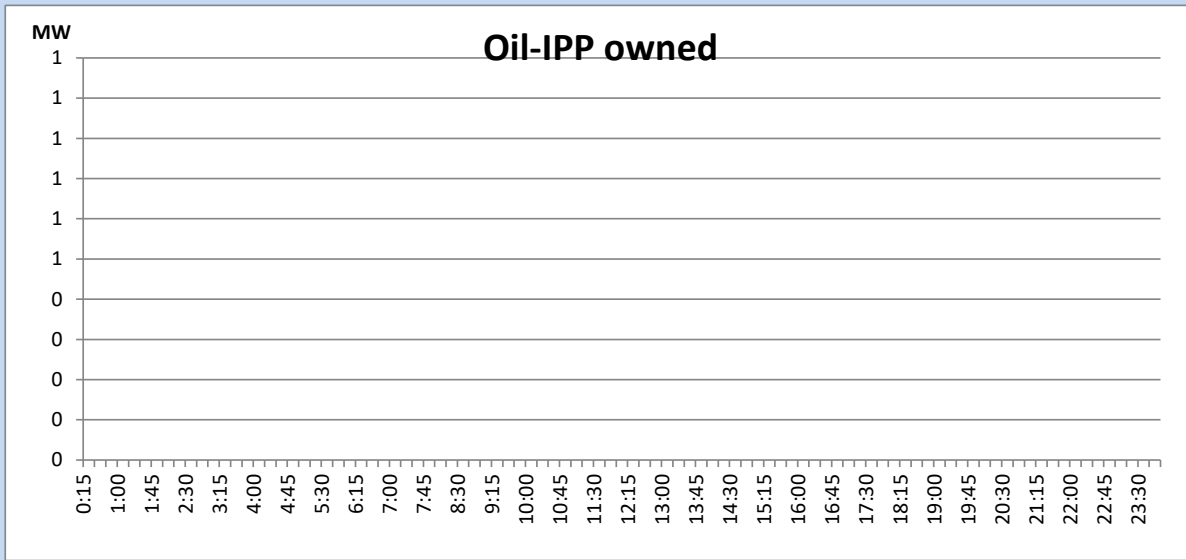
CEB Oil Plant Generation during the Previous day

October 23, 2022



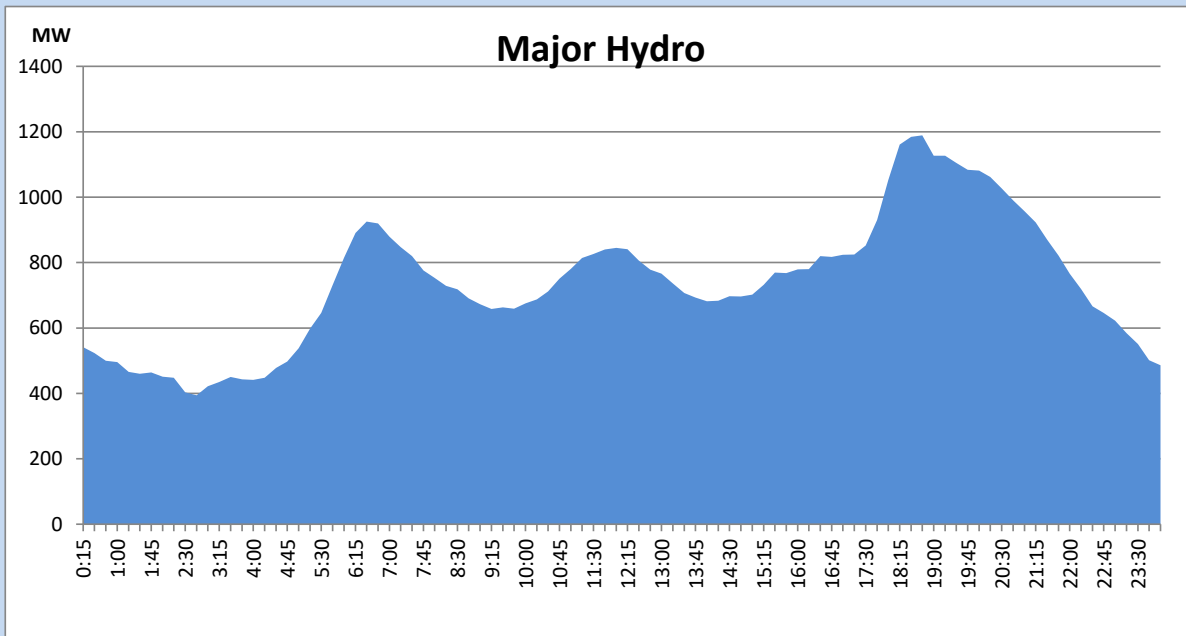
IPP Oil Plant Generation during the Previous day

October 23, 2022



Major Hydro Generation during the Previous day

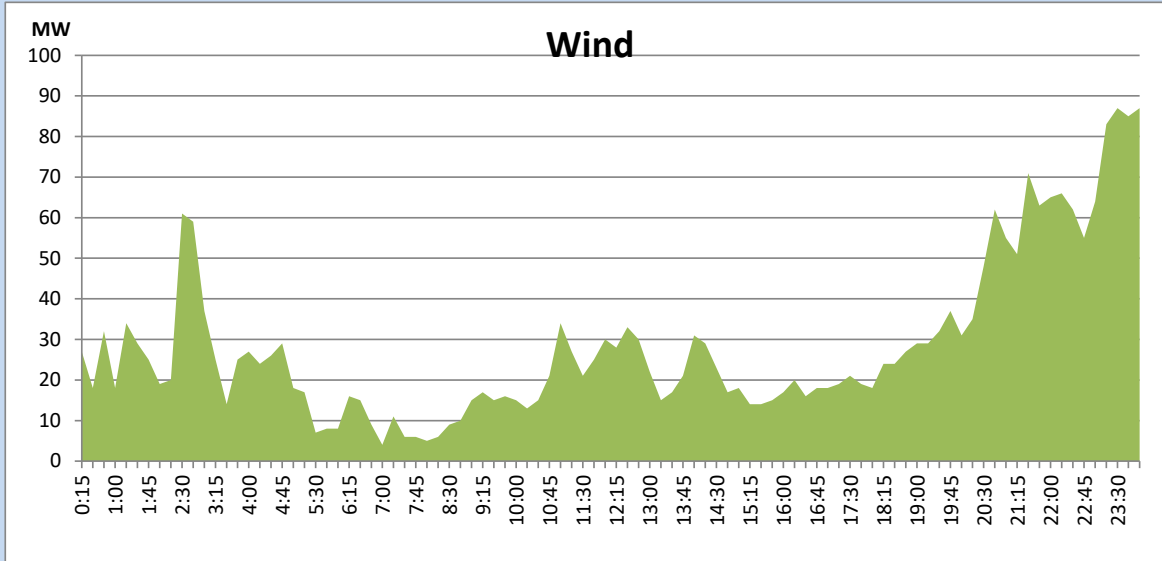
October 23, 2022



Wind Generation during the Previous day

October 23, 2022

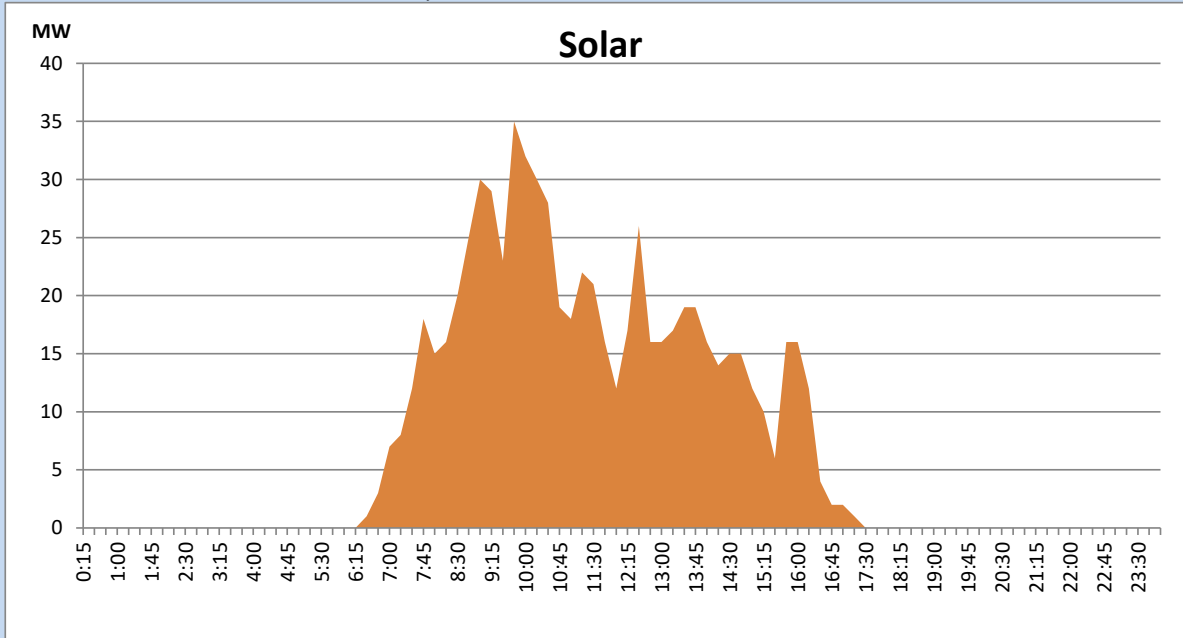
Based on Telemetered Power Stations only



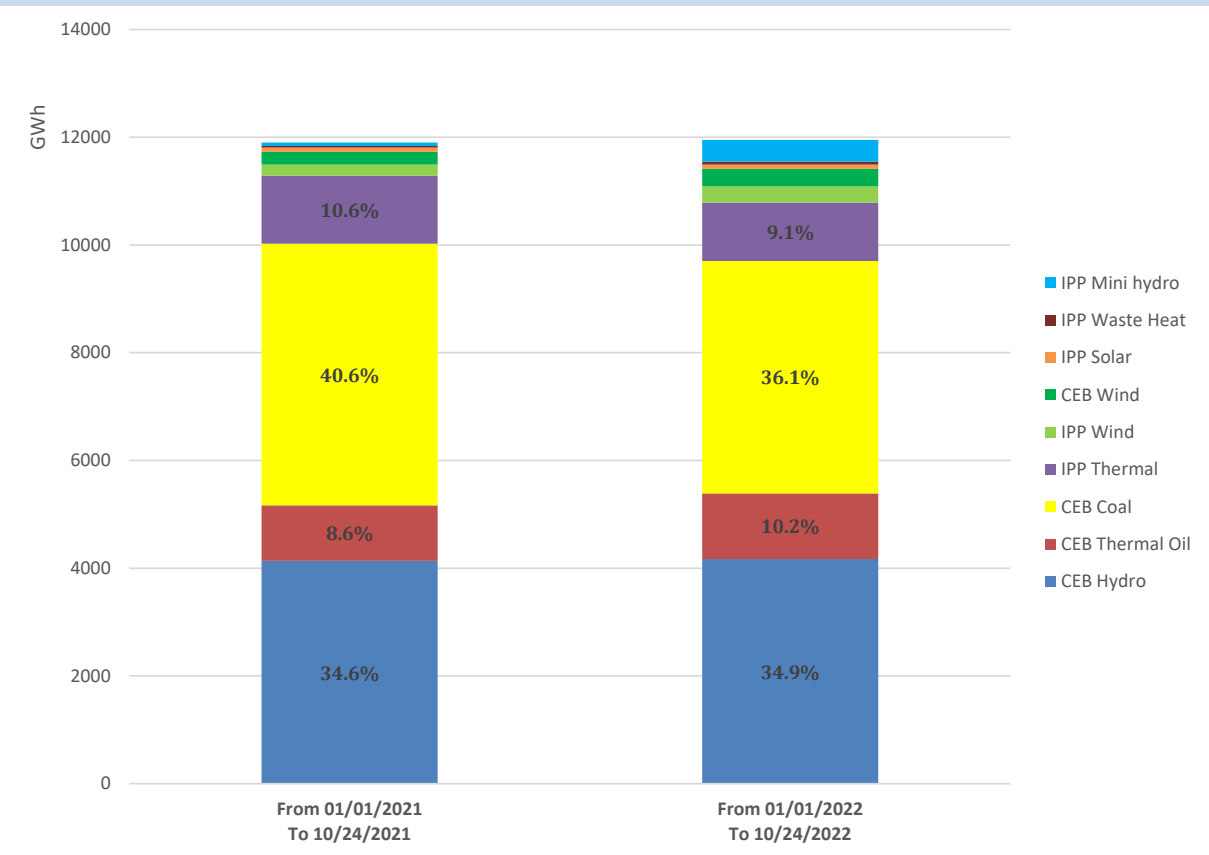
Solar Generation during the Previous day

October 23, 2022

Based on Telemetered Power Stations only



Cumulative Dispatch Comparison with Last Year



Thermal Plant Fuel types

Power Station	Primary Fuel
CEB Thermal	
Sapugaskanda 1	Heavy Fuel
Sapugaskanda 2	Heavy Fuel
Kelanitissa Small Gas Turbines	Auto Diesel
GT 7 - Kelanitissa	Auto Diesel
Kelanitissa CCY	Naphtha or Diesel
Lakvijaya 1	Coal
Lakvijaya 2	Coal
Lakvijaya 3	Coal
Uthuru Janani	Heavy Fuel
Barge CEB	Heavy Fuel

Power Station	Primary Fuel
Private Thermal	
Sojitz - Kelanitissa	Auto Diesel
West Coast	Auto Diesel / Heavy Fuel
ACE Matara	Heavy Fuel
ACE Embilipitiya	Heavy Fuel

Major Incidents during the day -as reported by CEB morning of

October 25, 2022

- 1) Castlereigh reservoir, Laxapana, Canyon, Norton and Kukule ponds spilling continues to the present hour. Maussakelle reservoir spilled intermittently and spilling stopped at 2:08hrs (25.10.2022). Upper Kotmale pond spilling stopped at 5:00hrs (25.10.2022).
- 2) Kilinochchi – Chunnakum both ccts tripped and A/R from both ends at 11:22hrs due to the operation of DEF protection.
- 3) Polpitiya Gen 02 made a force shutdown at 13:01hrs due to high turbine guide bearing temperature. The unit resumed generation at 13:43hrs.
- 4) Monaragala 132/33kV T/F 01 tripped at 13:48hrs due to the operation of differential protection. The T/F normalized at 14:58hrs.
- 5) Kelanitissa – Sub L cable unable to switched on from Kelanitissa end due to synchro-check error after releasing for maintenance works on 23/10/2022. The cable restored at 23:20hrs.
- 6) Biyagama 220/132/33kV T/F 01 tripped at 01:44hrs (25.10.2022) due to the operation of REF protection with the CT blast in 132kV