

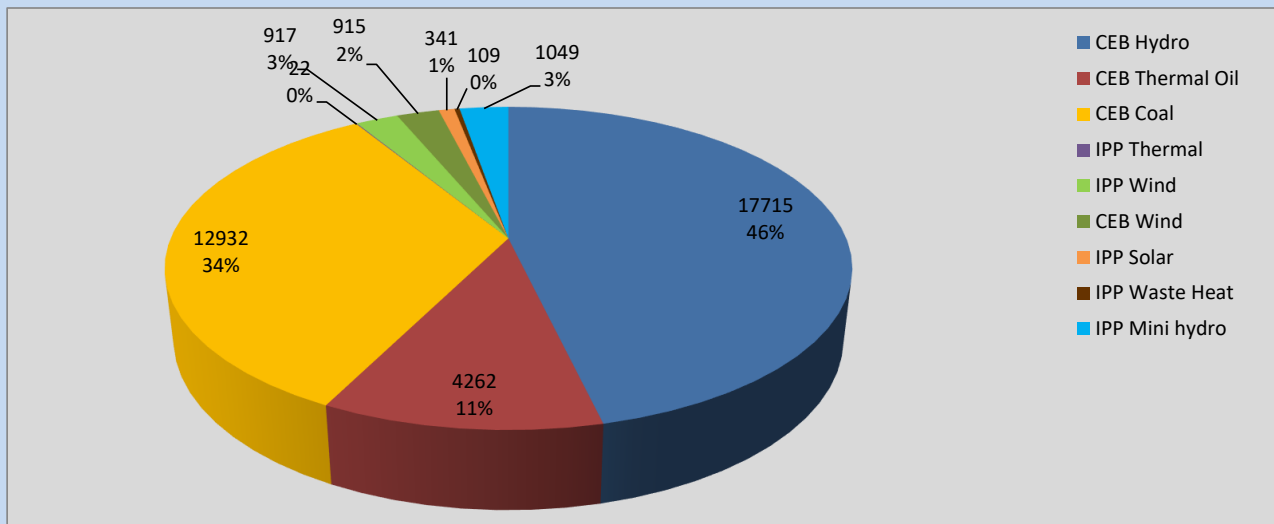
Generation and Reservoirs Statistics

September 24, 2022



PUBLIC UTILITIES COMMISSION OF SRI LANKA

Daily Generation Mix in MWh



Total Generation **38,262 MWh**

Note: Above data is excluding contribution from Roof Top Solar, 1MW Solar and certain Mini Hydro plants

Cumulative Dispatch

Note: Following data is Excluding contribution from Roof Top Solar, 1MW solar and Mini Hydro plants

For Current Month

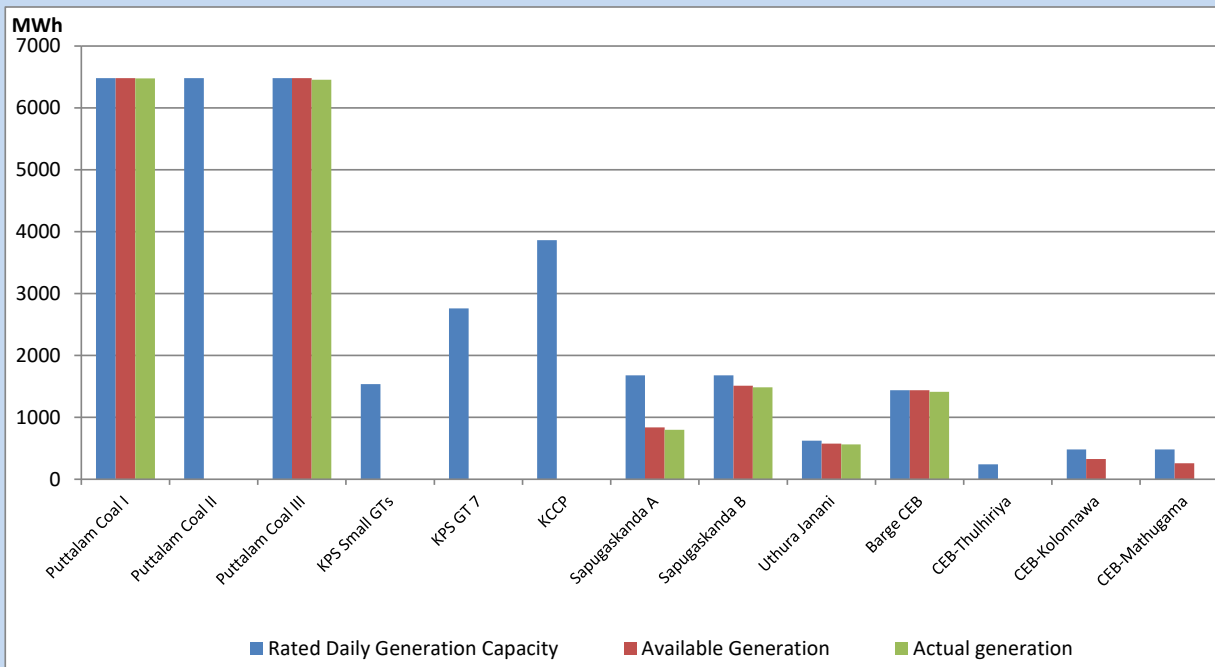
Category	Dispatch (GWh)	
CEB Hydro	461.01	48.80%
CEB Thermal Oil	38.34	4.06%
CEB Coal	276.91	29.31%
IPP Thermal	18.99	2.01%
SPP Wind	42.03	4.45%
CEB Wind	51.83	5.49%
SPP Solar	7.47	0.79%
SPP Solid Waste	4.79	0.51%
Mini Hydro	43.38	4.59%
Total	944.75	

For Current Year

Category	Dispatch (GWh)	
CEB Hydro	3,594.7	33.20%
CEB Thermal Oil	1,150.7	10.63%
CEB Coal	3,990.0	36.85%
IPP Thermal	1,045.9	9.66%
SPP Wind	272.8	2.52%
CEB Wind	297.9	2.75%
SPP Solar	69.7	0.64%
SPP Solid Waste	53.9	0.50%
Mini Hydro	353.4	3.26%
Total	10,828.9	

CEB owned Thermal Plant Dispatch

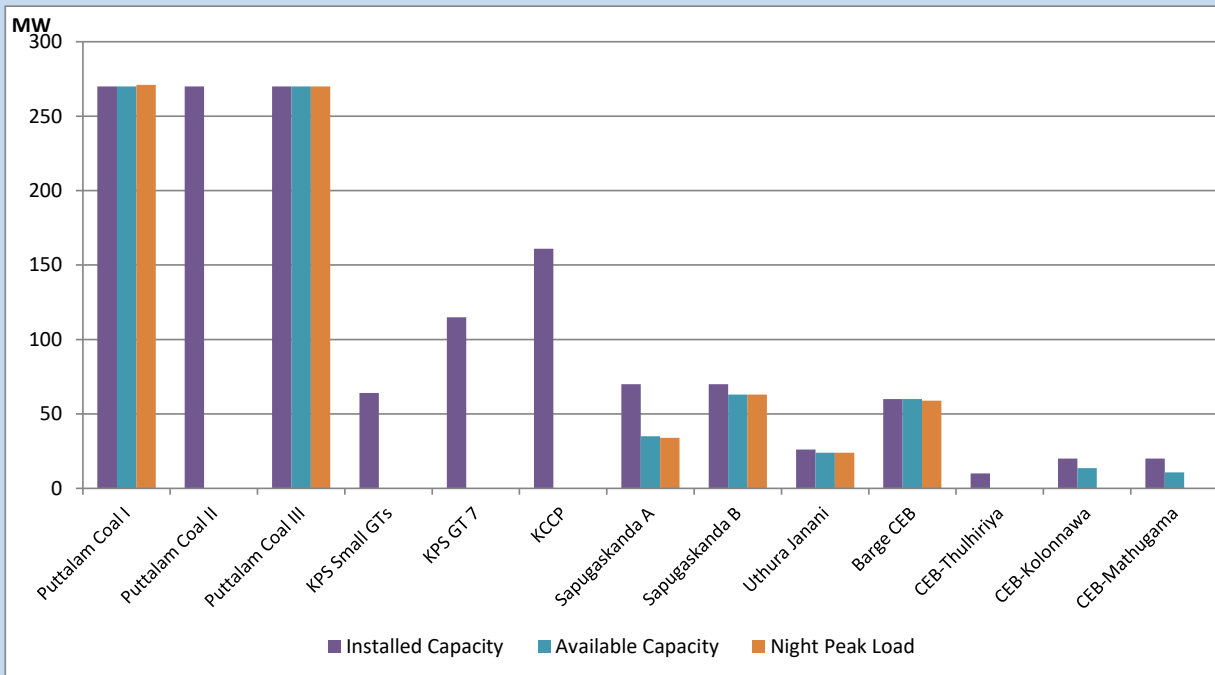
September 24, 2022



Available Generation is estimated based on plant availability at 6.00am on

September 25, 2022

CEB owned Thermal Plant Loading at the Night Peak



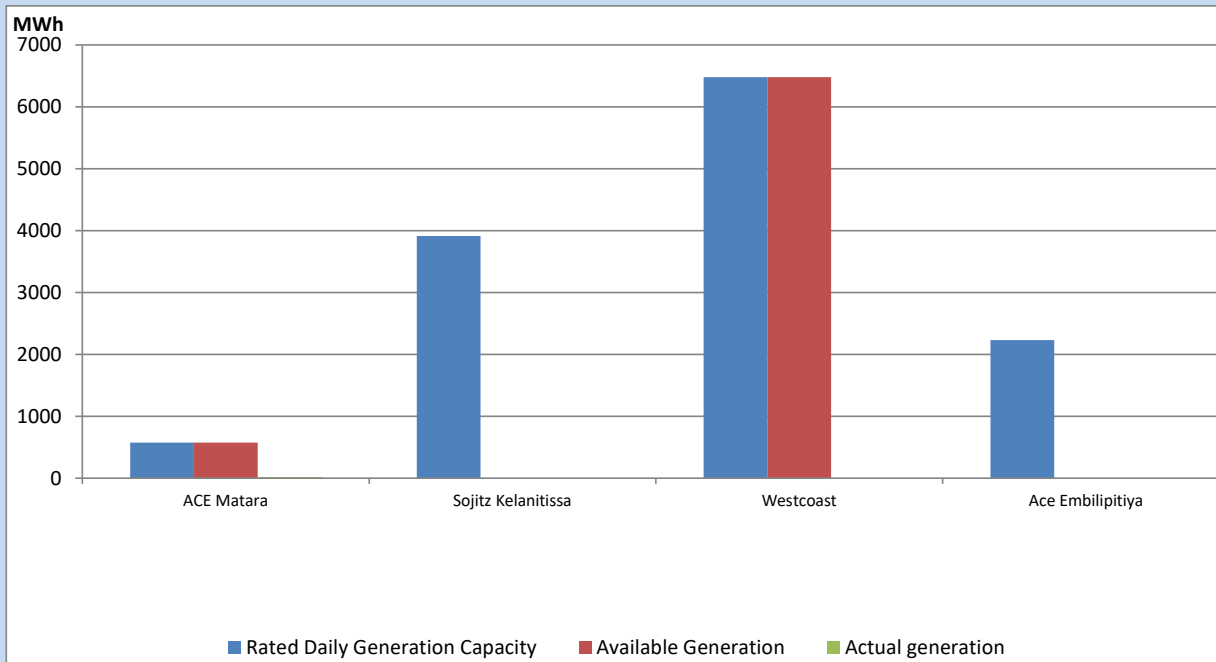
Note- Plant availability is recorded at 6.00 am on

September 25, 2022

IPP owned Thermal Plant Dispatch

September 24, 2022

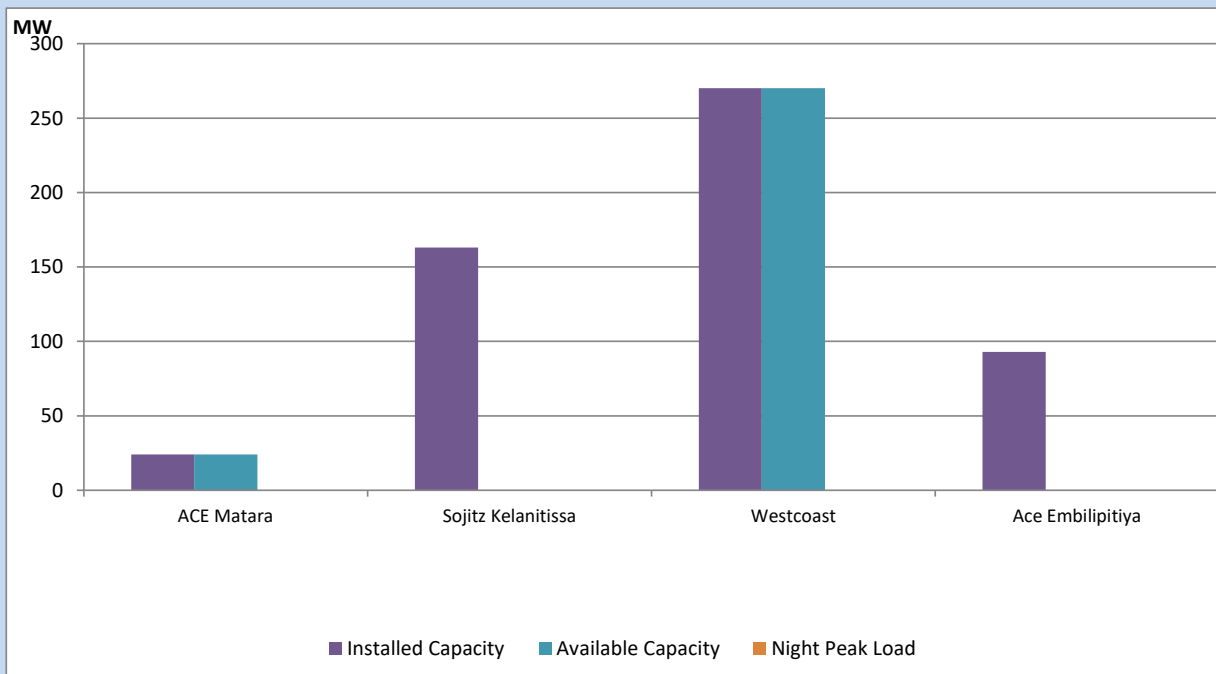
Asia Power, V Power Pallekale, Vpower Galle, V Power Horana, Vpower Hambantota, Vpower Valachchena and Altaqa Mahiyanganaya are not available due to expiration of PPAs



Available Generation is estimated based on plant availability at 6.00am on

September 25, 2022

IPP owned Thermal Plant Loading at the Night Peak

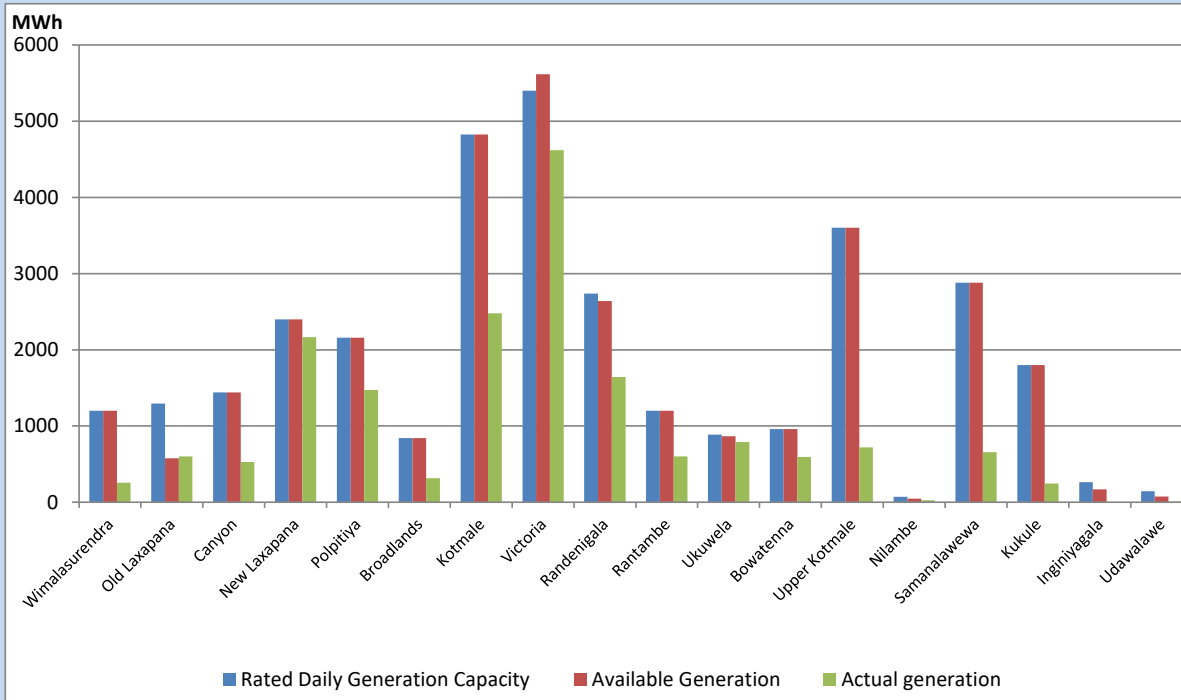


Note- Plant availability is recorded at 6.00 am on

September 25, 2022

Major Hydro Plant Dispatch

September 24, 2022

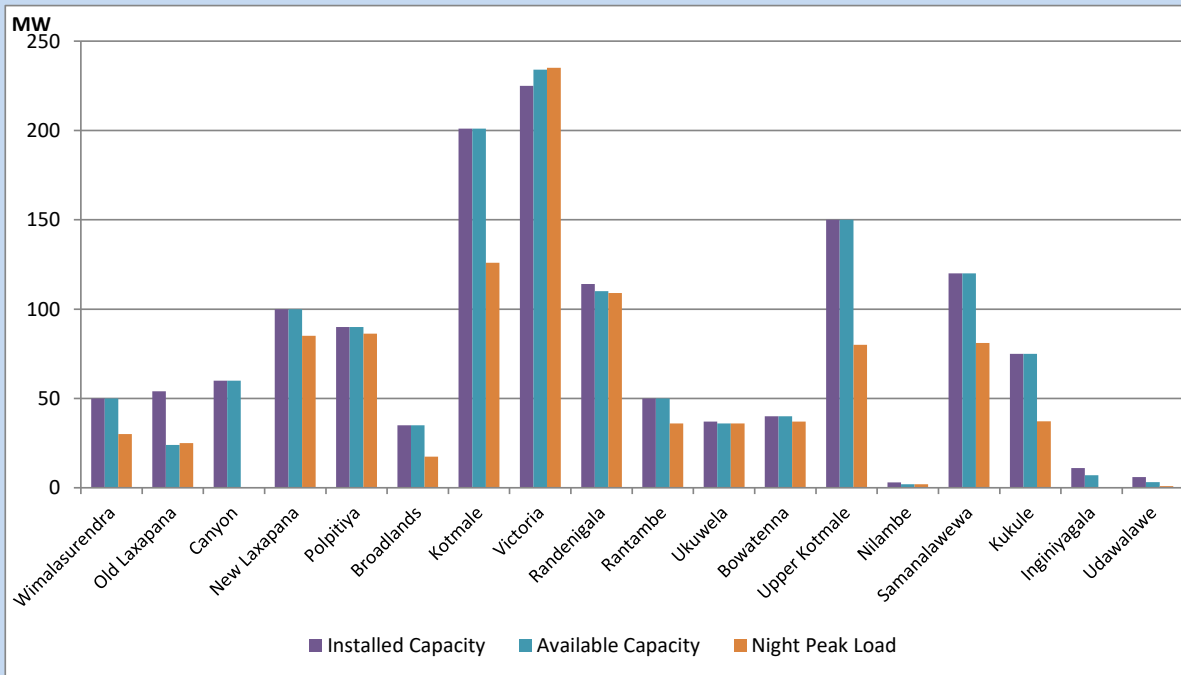


Available Generation is estimated based on plant availability at 6.00am on
Broadlands power plant is operating in the Commissioning Stage

September 25, 2022

Major Hydro Plant Loading at Night Peak

September 24, 2022



Note- Plant availability is recorded at 6.00 am on
Broadlands power plant is operating in the Commissioning Stage

September 25, 2022

Summary of Major Plant performance

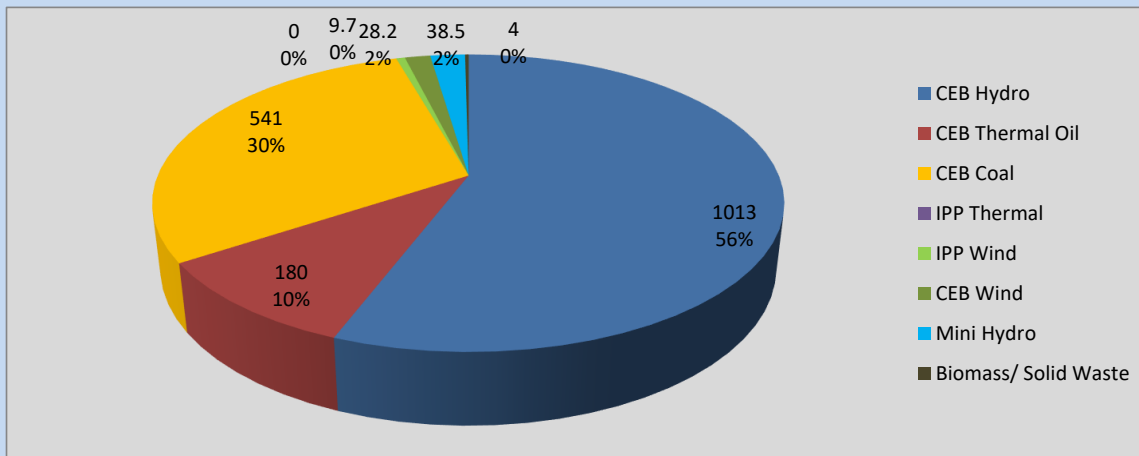
Plant	Installed Capacity	Plant Availability	Night peak Load	Plant Dispatch
	(MW)	(MW)	(MW)	(MWh)
Wimalasurendra	50	50	30	255
Old Laxapana	54	24	25	600
Canyon	60	60	0	527
New Laxapana	100	100	85	2,166
Polpitiya	90	90	86	1,473
Broadlands	35	35	18	315
Kotmale	201	201	126	2,480
Victoria	225	234	235	4,619
Randenigala	114	110	109	1,643
Rantambe	50	50	36	601
Ukuwela	37	36	36	789
Bowatenna	40	40	37	593
Upper Kotmale	150	150	80	718
Nilambe	3	2	2	27
Samanalawewa	120	120	81	655
Kukule	75	75	37	247
Inginiyagala	11	7	0	0
Udawalawe	6	3	1	7
Puttalam Coal I	270	270	271	6,476
Puttalam Coal II	270	0	0	0
Puttalam Coal III	270	270	270	6,456
KPS Small GTs	64	0	0	0
KPS GT 7	115	0	0	0
KCCP	161	0	0	0
Sapugaskanda A	70	35	34	801
Sapugaskanda B	70	63	63	1,487
Uthura Janani	26	24	24	563
Barge CEB	60	60	59	1,411
CEB-Thulhiriya	10	0	0	0
CEB-Kolonnawa	20	14	0	0
CEB-Mathugama	20	11	0	0
ACE Matara	24	24	0	22
Sojitz Kelanitissa	163	0	0	0
West Coast	270	270	0	0
ACE Embilipitiya	93	0	0	0
Total	3,397	2,428	1,825	38,262

Plant availability is the availability recorded at 6 am on

September 25, 2022

Contribution to the Night Peak in MW

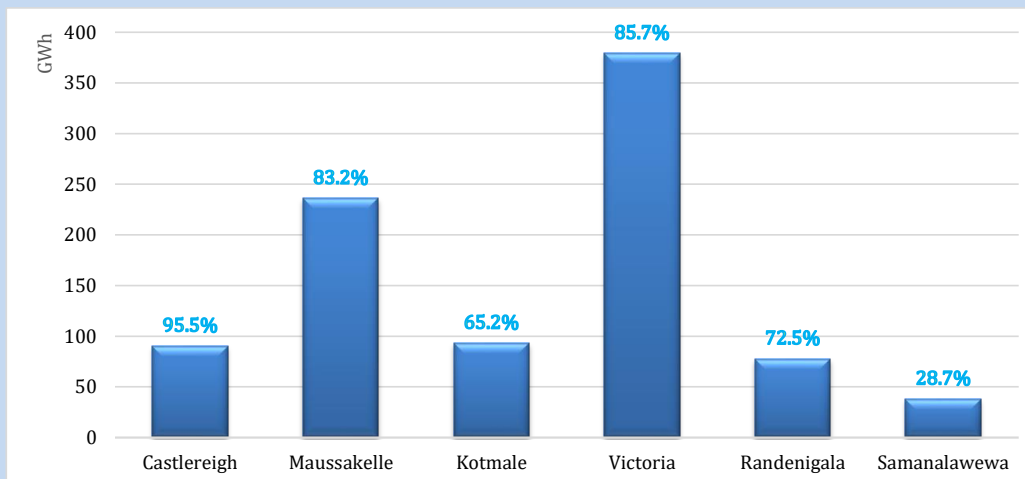
September 24, 2022



Night Peak*	1,814.3 MW
Day Peak	1,649.1 MW
Minimum Demand	1,361.0 MW

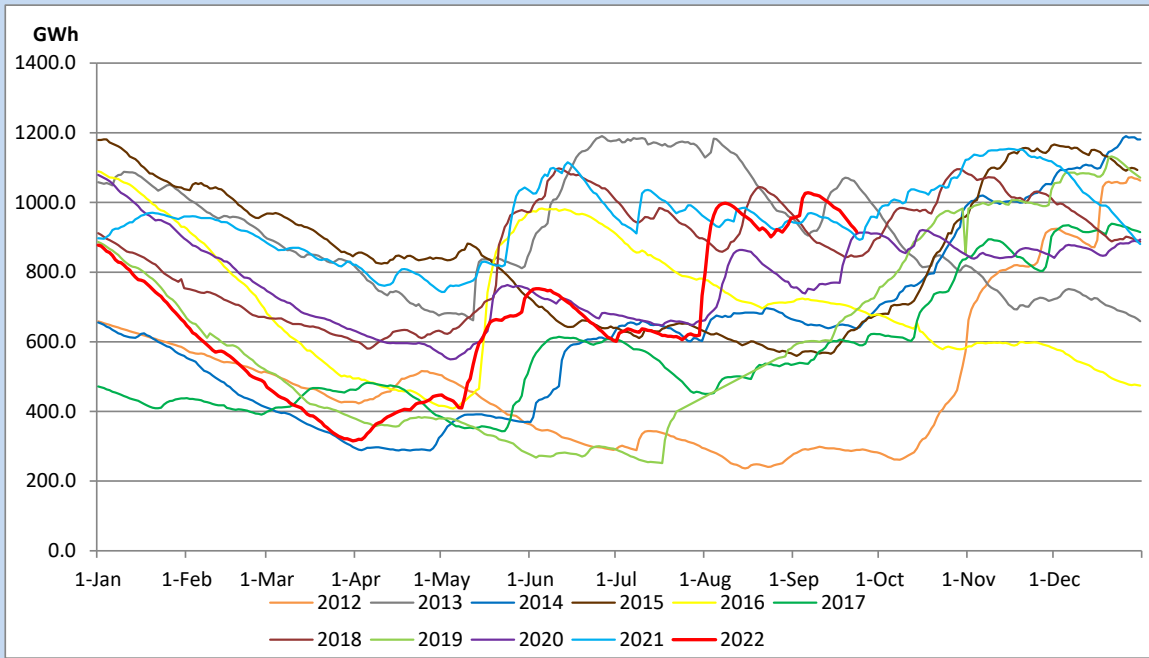
Above figures are excluding contribution from Roof Top Solar, 1MW solar, certain Wind plants and Mini Hydro plants

Reservoir Levels - as at 06.00 Hr on September 25, 2022

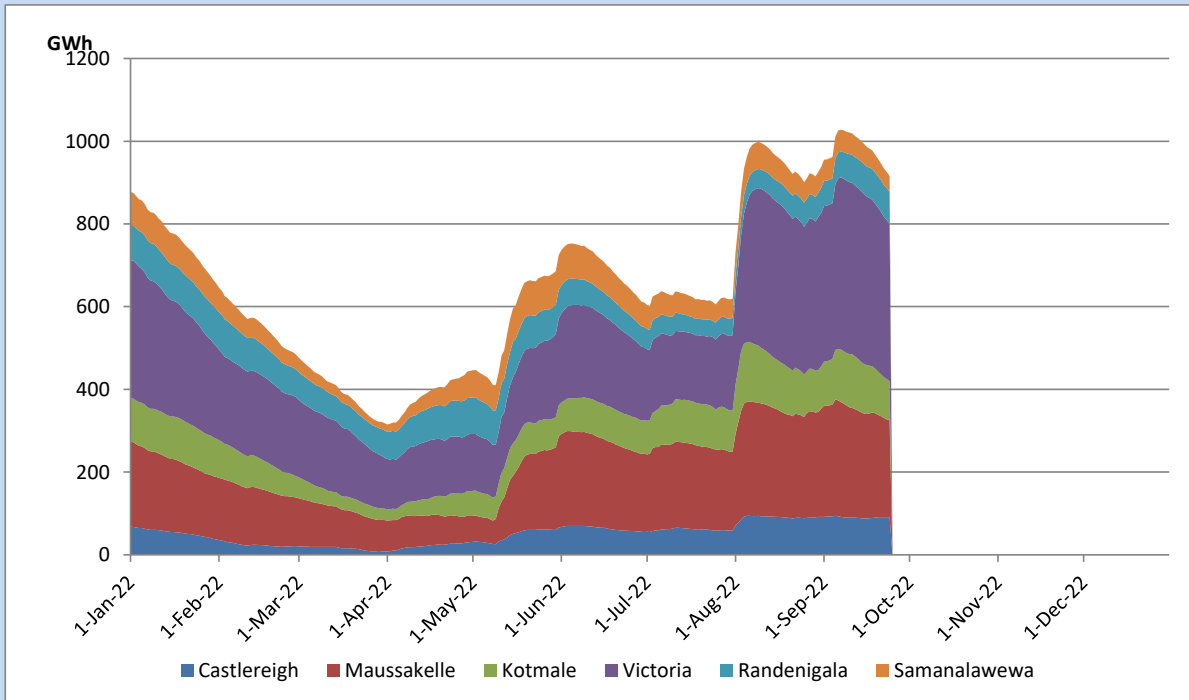


Total Reservoir Level	915.4 GWh
% of Total capacity	76.0%

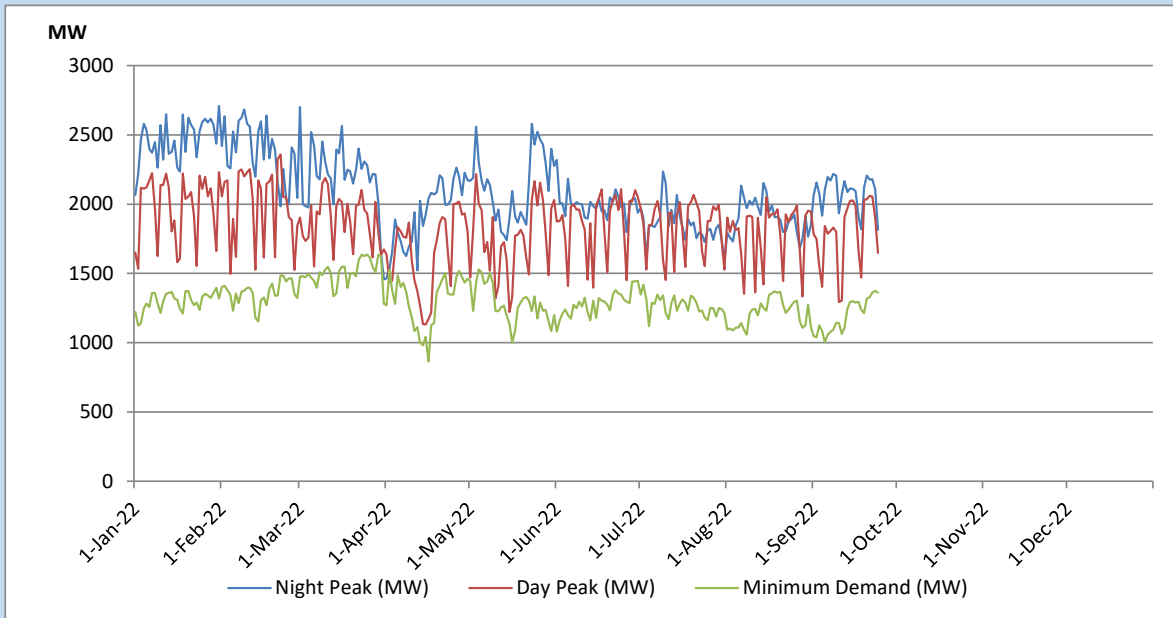
Comparison of Total Reservoir Storage Levels with Past Years



Variation of Major Hydro Reservoir Levels in the current year (GWh)



Variation of Demand during the current year

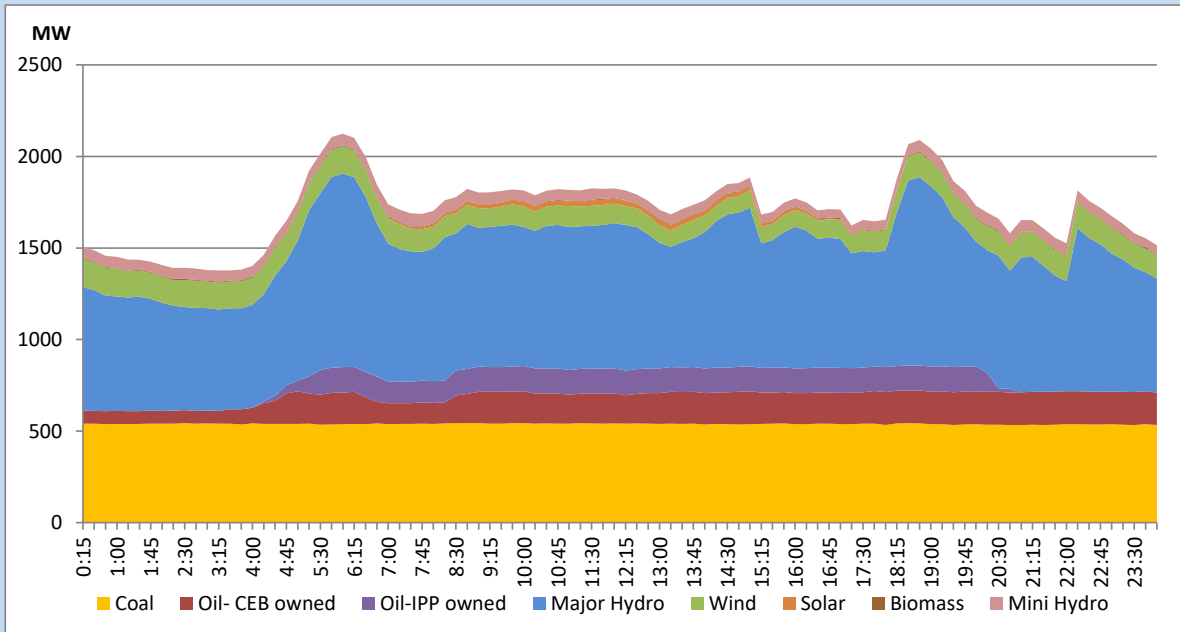


The above figures are excluding contribution from Roof Top Solar, 1MW solar, certain Wind plants and Mini Hydro plants

Daily Load Curve of the Previous day

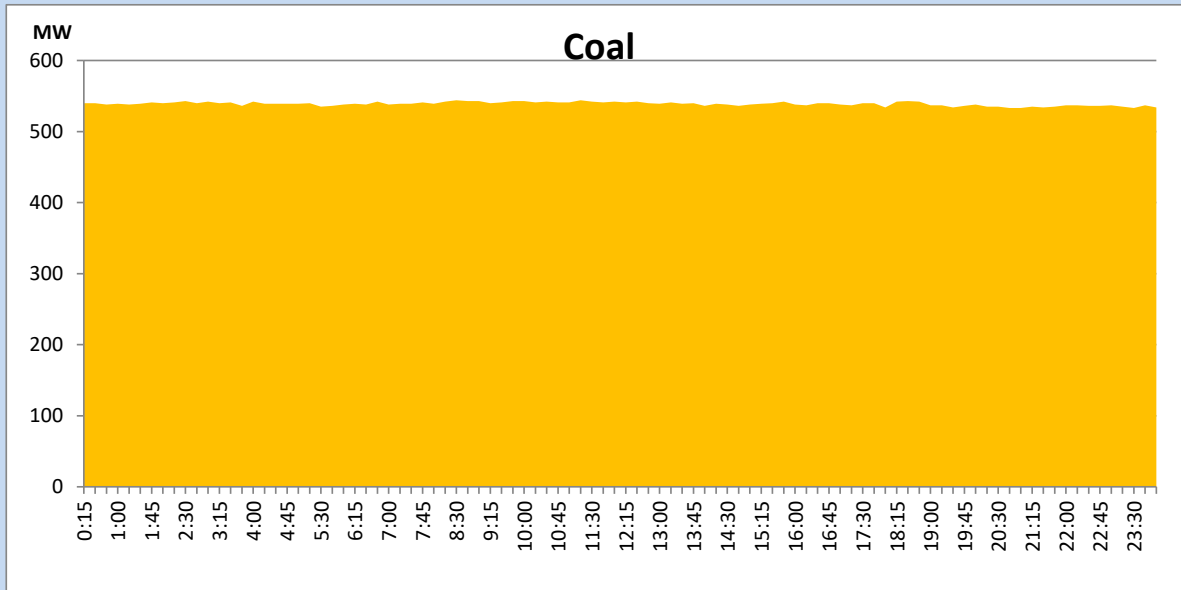
September 23, 2022

Solar and wind data is based on Telemetered Power Stations only



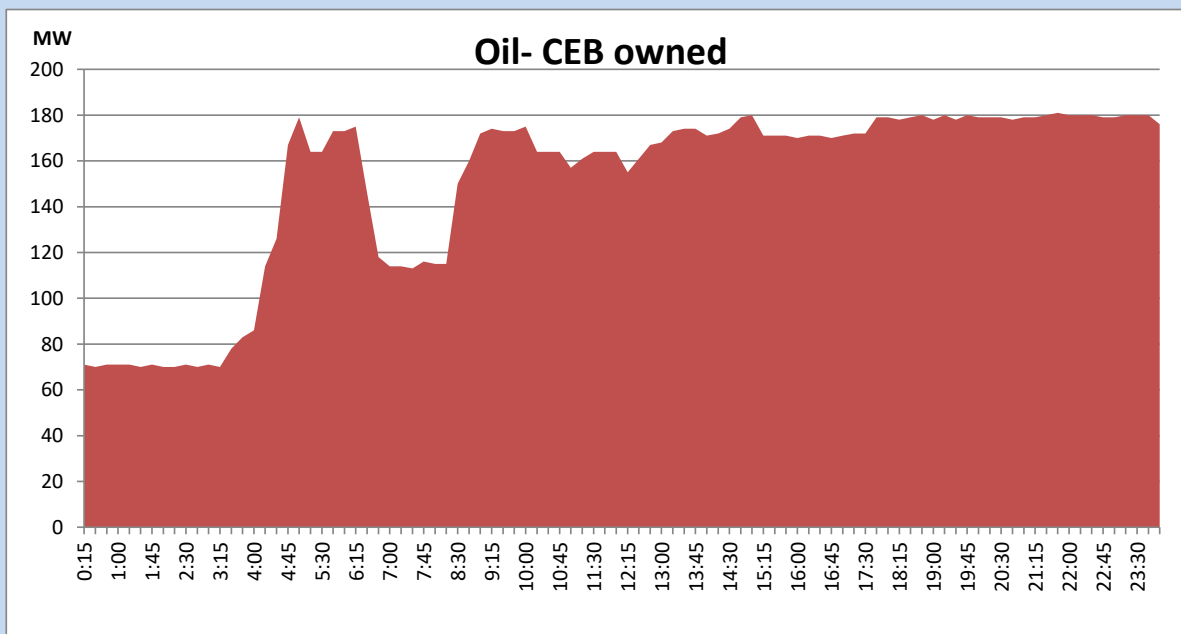
Coal Generation during the Previous day

September 23, 2022



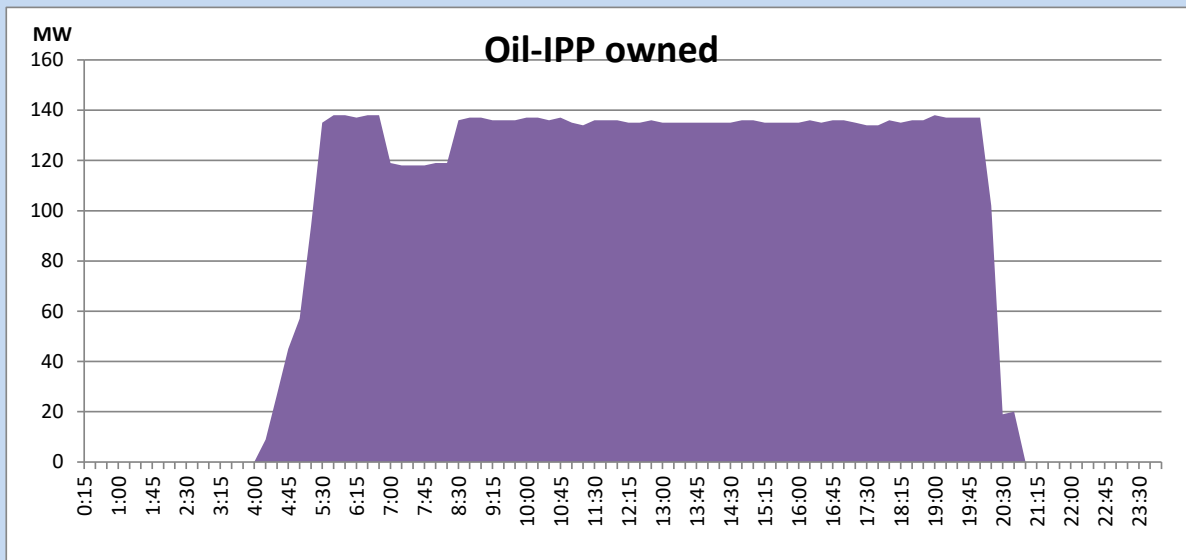
CEB Oil Plant Generation during the Previous day

September 23, 2022



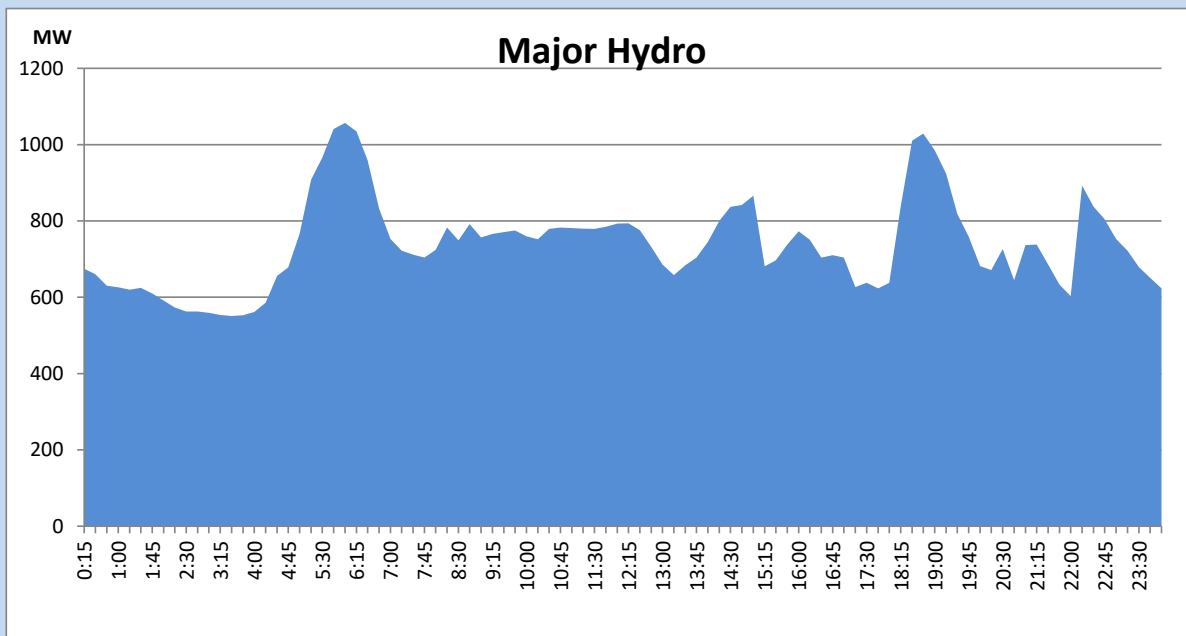
IPP Oil Plant Generation during the Previous day

September 23, 2022



Major Hydro Generation during the Previous day

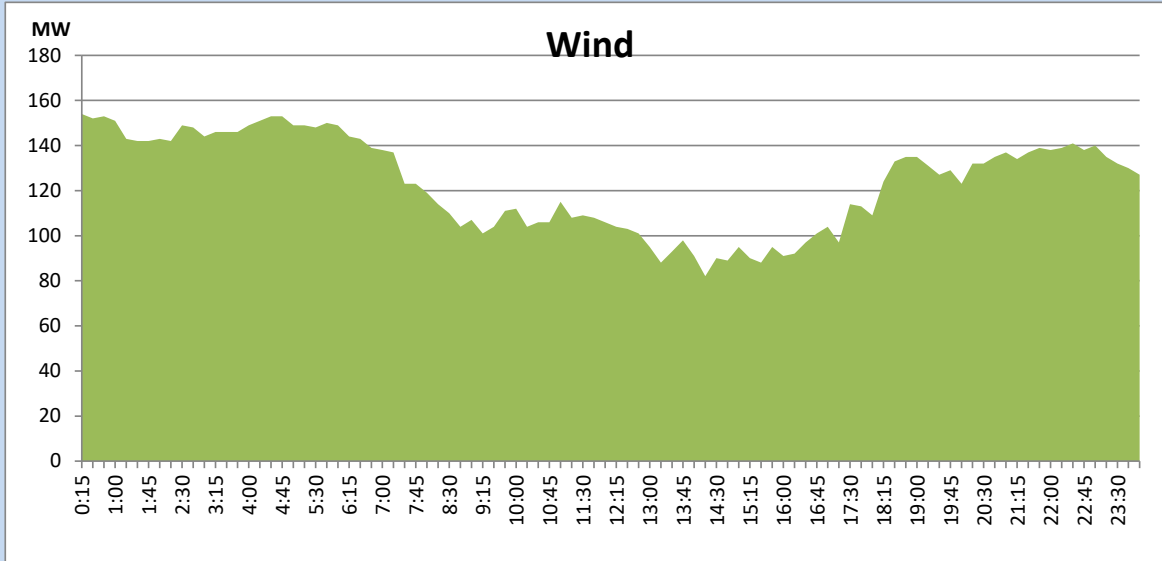
September 23, 2022



Wind Generation during the Previous day

September 23, 2022

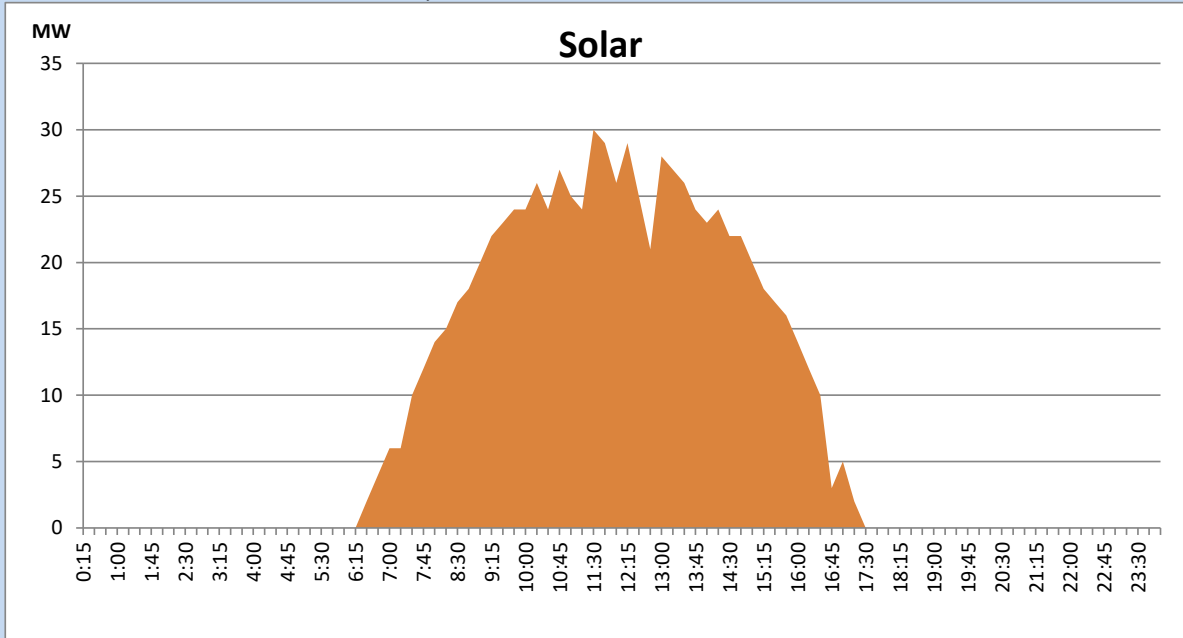
Based on Telemetered Power Stations only



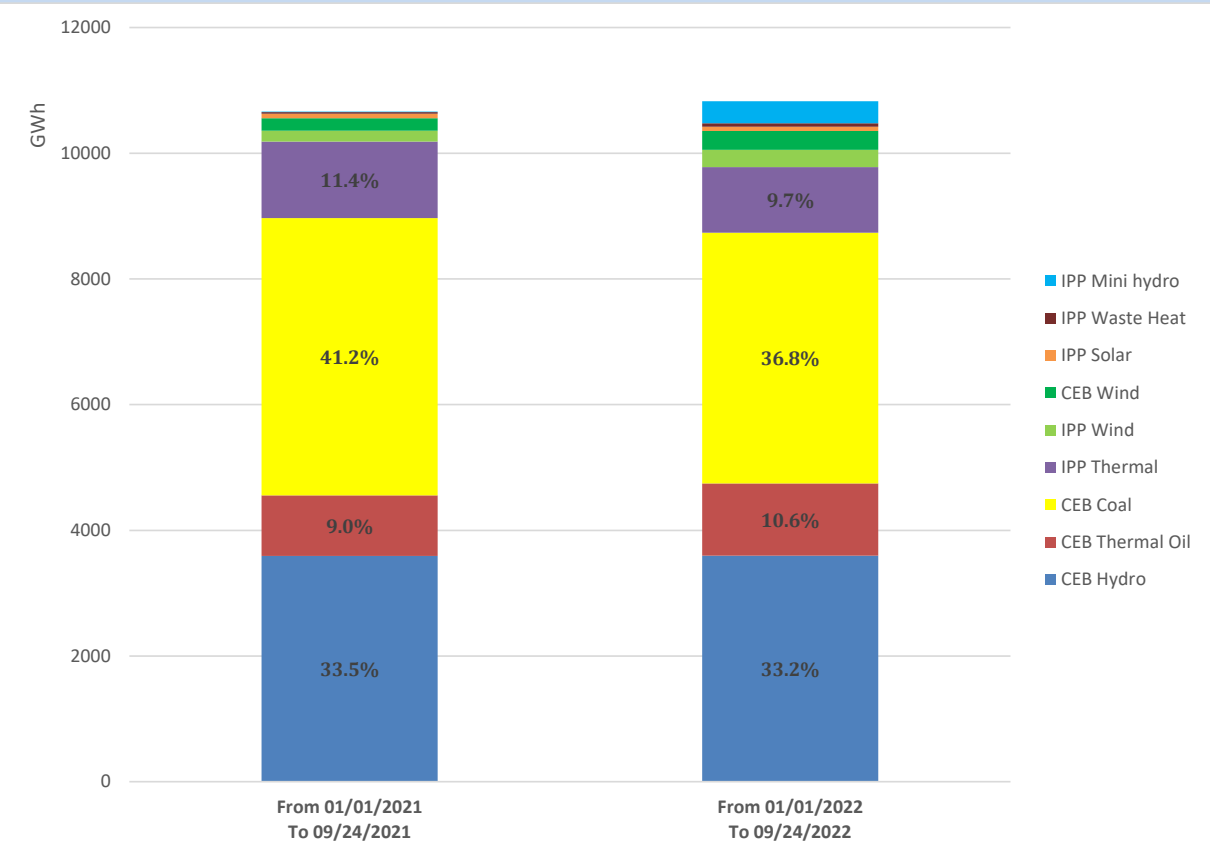
Solar Generation during the Previous day

September 23, 2022

Based on Telemetered Power Stations only



Cumulative Dispatch Comparison with Last Year



Thermal Plant Fuel types

Power Station	Primary Fuel
CEB Thermal	
Sapugaskanda 1	Heavy Fuel
Sapugaskanda 2	Heavy Fuel
Kelanitissa Small Gas Turbines	Auto Diesel
GT 7 - Kelanitissa	Auto Diesel
Kelanitissa CCY	Naphtha or Diesel
Lakvijaya 1	Coal
Lakvijaya 2	Coal
Lakvijaya 3	Coal
Uthuru Janani	Heavy Fuel
Barge CEB	Heavy Fuel

Power Station	Primary Fuel
Private Thermal	
Sojitz - Kelanitissa	Auto Diesel
West Coast	Auto Diesel / Heavy Fuel
ACE Matara	Heavy Fuel
ACE Embilipitiya	Heavy Fuel

Major Incidents during the day -as reported by CEB morning of

September 25, 2022

- 1) Rotational manual load shedding was carried out from 15:00hrs to 22:00hrs.
- 2) New Laxapana Unit 01 tripped at 07:36hrs rejecting 50MW from the system due to governor fault. N'Lax unit 01 resumed generation at 8:50hrs.
- 3) Kotugoda - Aniyakanda cct tripped at 15:12hrs from Aniyakanda end due to operation of earth fault protection. Kotugoda 220/132/33kV T/F 02 tripped due to operation of differential protection at 15:13hrs. Kotugoda -Aniyakanda cct and Kotugoda T/F 02 are yet to be restored.
- 4) Maho 132/33kV T/F 01 & T/F 02 tripped from 33kV side only at 03:34hrs(25/09/2022) due to operation of earth fault protection causing all 33kV feeders to be dead. T/F01 & 02 normalized at 04:04hrs(25/09/2022) and 04:39hrs(25/09/2022), respectively and all 33kV feeders were normalized by 04:39hrs(25/09/2022). 33kV bus section CB yet to be normalized.
- 5) New Laxapana Unit 01 tripped at 05:35hrs (25/09/2022) due to governor fault. N'Lax unit 01 is yet to resume generation.