

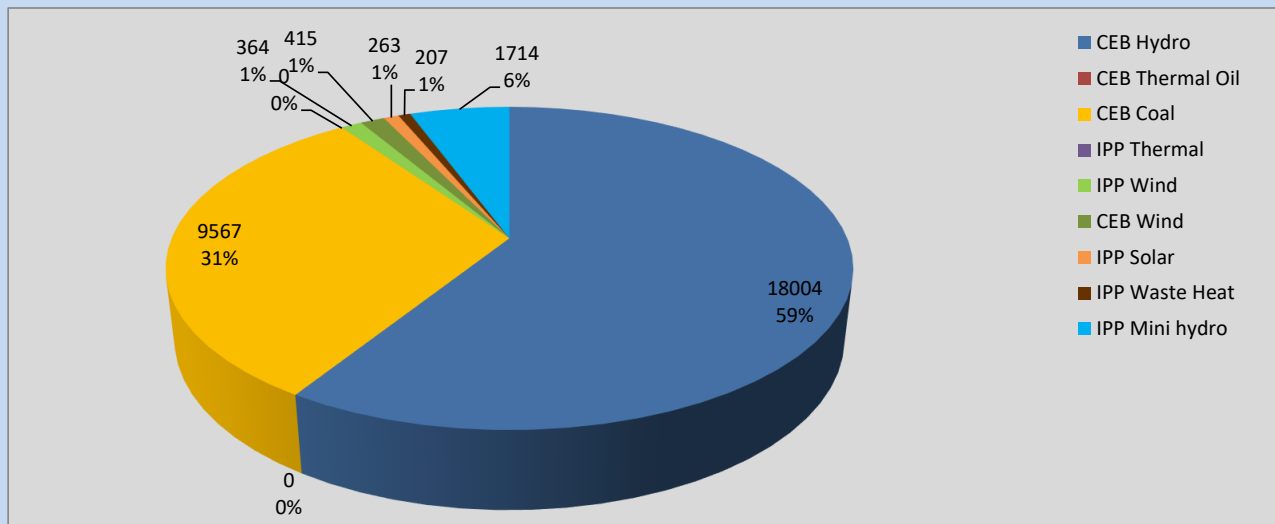
Generation and Reservoirs Statistics

October 23, 2022



PUBLIC UTILITIES COMMISSION OF SRI LANKA

Daily Generation Mix in MWh



Total Generation **30,534 MWh**

Note: Above data is excluding contribution from Roof Top Solar, 1MW Solar and certain Mini Hydro plants

Cumulative Dispatch

Note: Following data is Excluding contribution from Roof Top Solar, 1MW solar and Mini Hydro plants

For Current Month

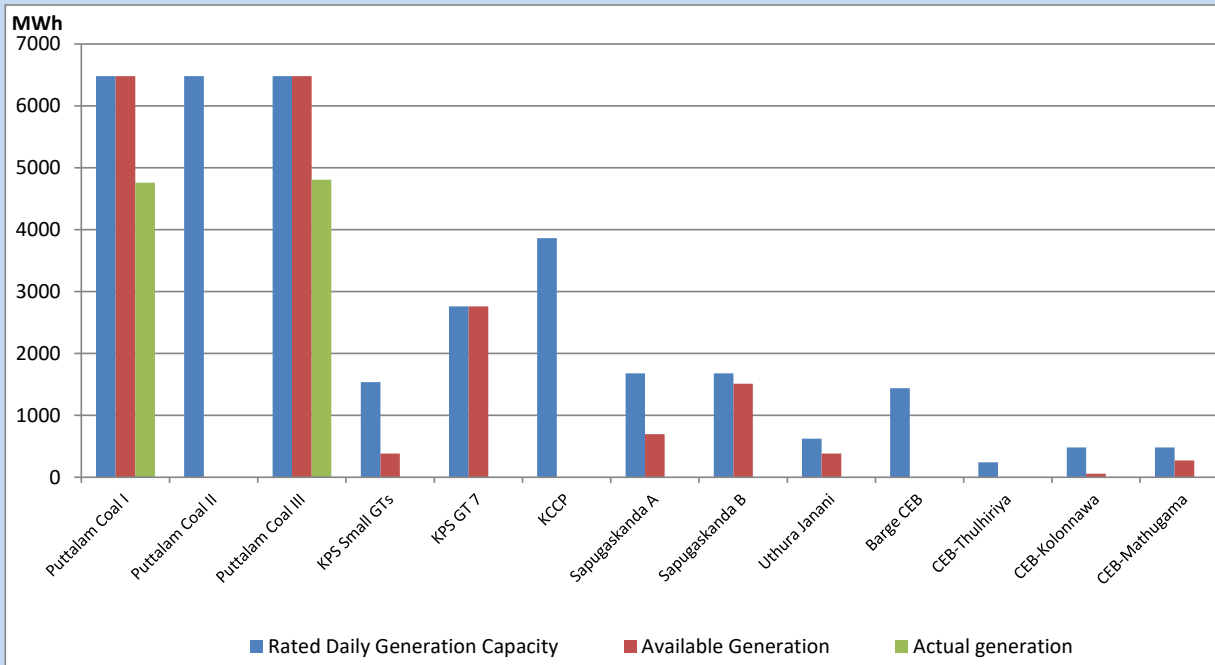
Category	Dispatch (GWh)	Percentage
CEB Hydro	450.94	53.34%
CEB Thermal Oil	38.25	4.52%
CEB Coal	263.81	31.21%
IPP Thermal	7.63	0.90%
SPP Wind	19.17	2.27%
CEB Wind	18.04	2.13%
SPP Solar	6.20	0.73%
SPP Solid Waste	3.90	0.46%
Mini Hydro	37.43	4.43%
Total	845.37	

For Current Year

Category	Dispatch (GWh)	Percentage
CEB Hydro	4,151.1	34.84%
CEB Thermal Oil	1,216.9	10.21%
CEB Coal	4,305.0	36.13%
IPP Thermal	1,083.4	9.09%
SPP Wind	300.1	2.52%
CEB Wind	324.1	2.72%
SPP Solar	77.6	0.65%
SPP Solid Waste	58.8	0.49%
Mini Hydro	398.0	3.34%
Total	11,914.7	

CEB owned Thermal Plant Dispatch

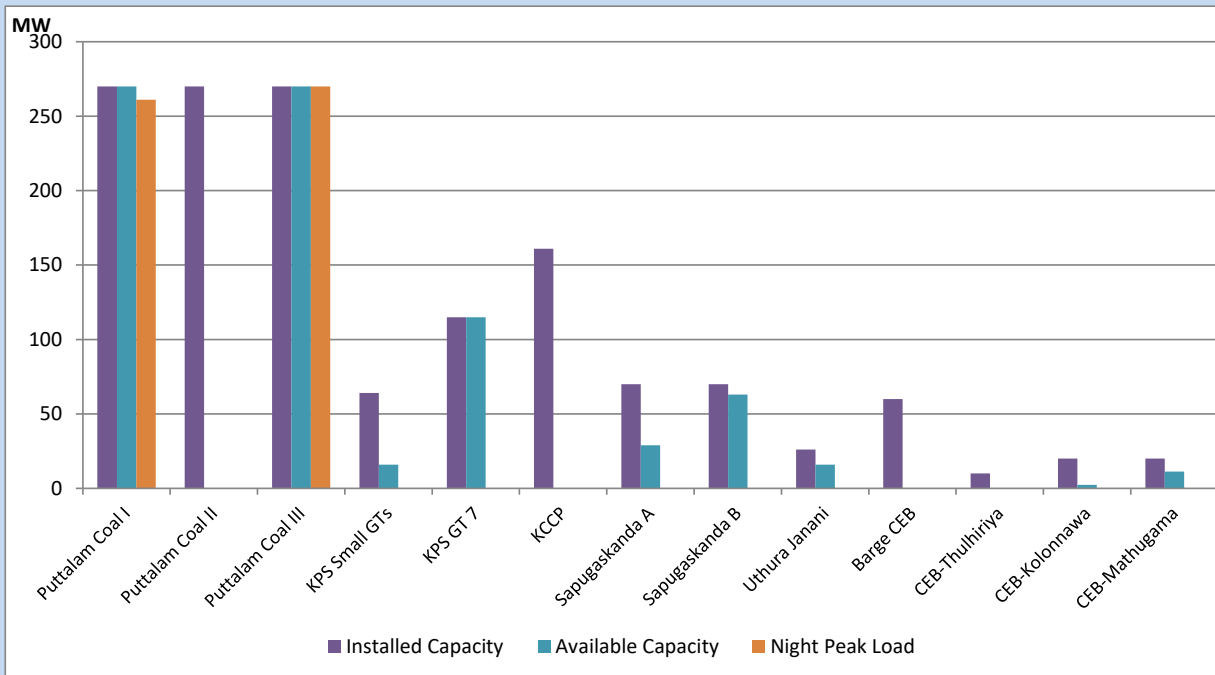
October 23, 2022



Available Generation is estimated based on plant availability at 6.00am on

October 24, 2022

CEB owned Thermal Plant Loading at the Night Peak



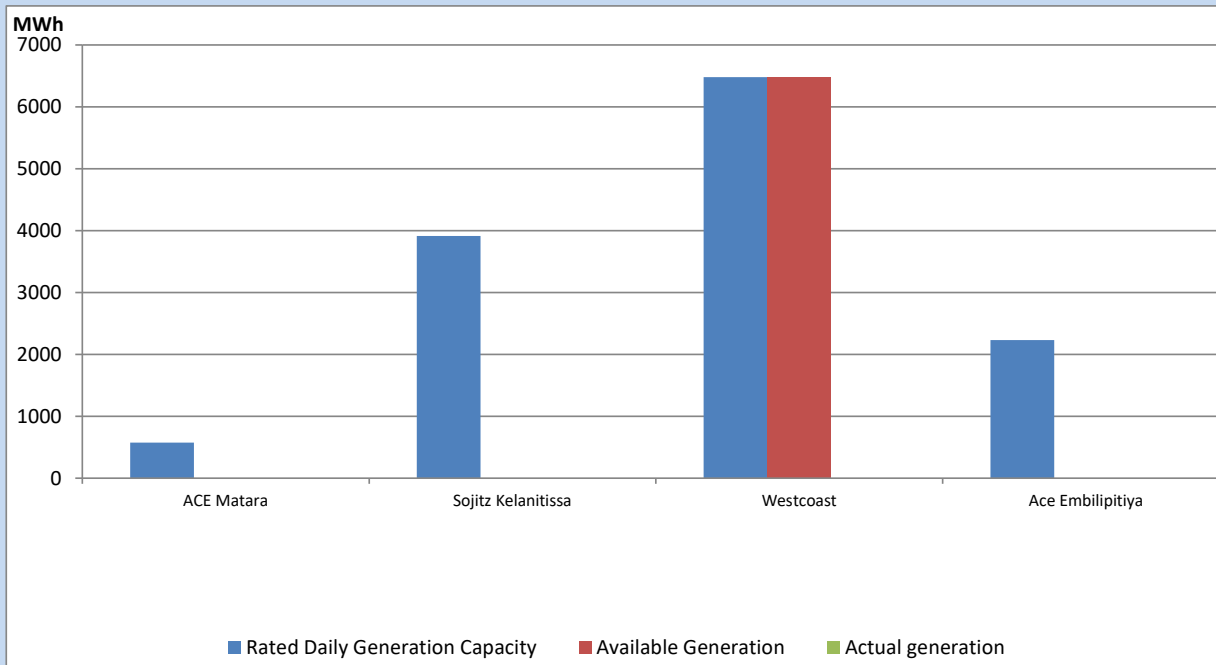
Note- Plant availability is recorded at 6.00 am on

October 24, 2022

IPP owned Thermal Plant Dispatch

October 23, 2022

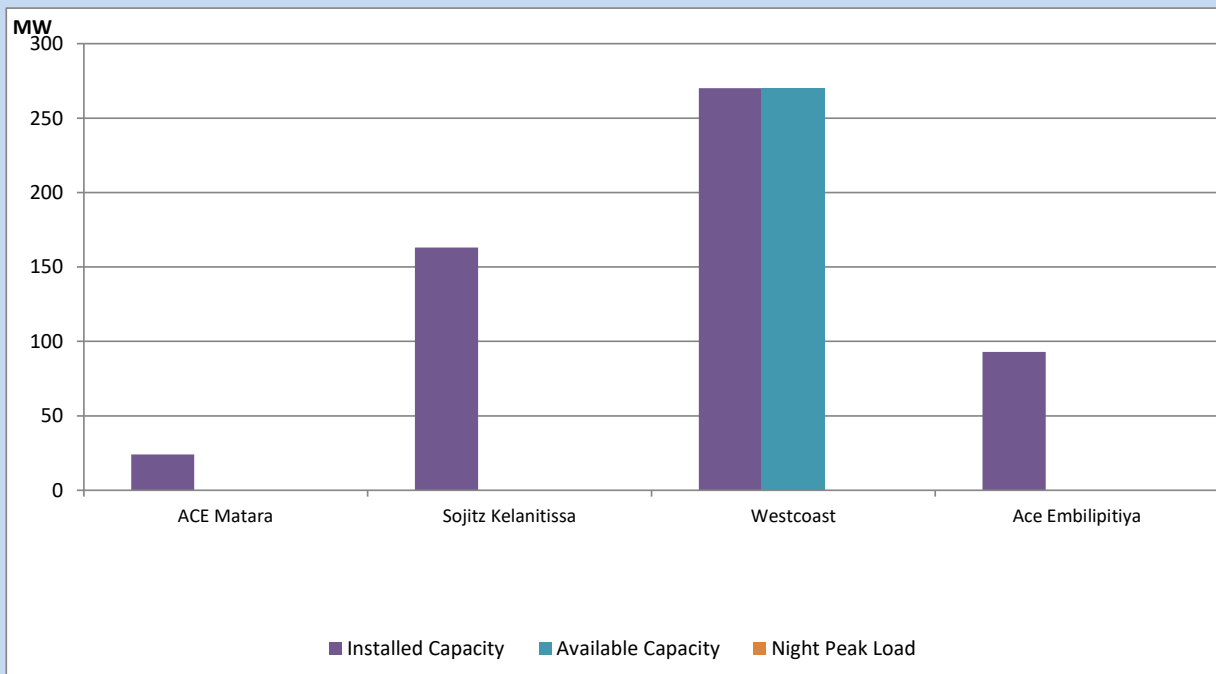
Asia Power, V Power Pallekale, Vpower Galle, V Power Horana, Vpower Hambantota, Vpower Valachchena and Altaqa Mahiyanganaya are not available due to expiration of PPAs



Available Generation is estimated based on plant availability at 6.00am on

October 24, 2022

IPP owned Thermal Plant Loading at the Night Peak

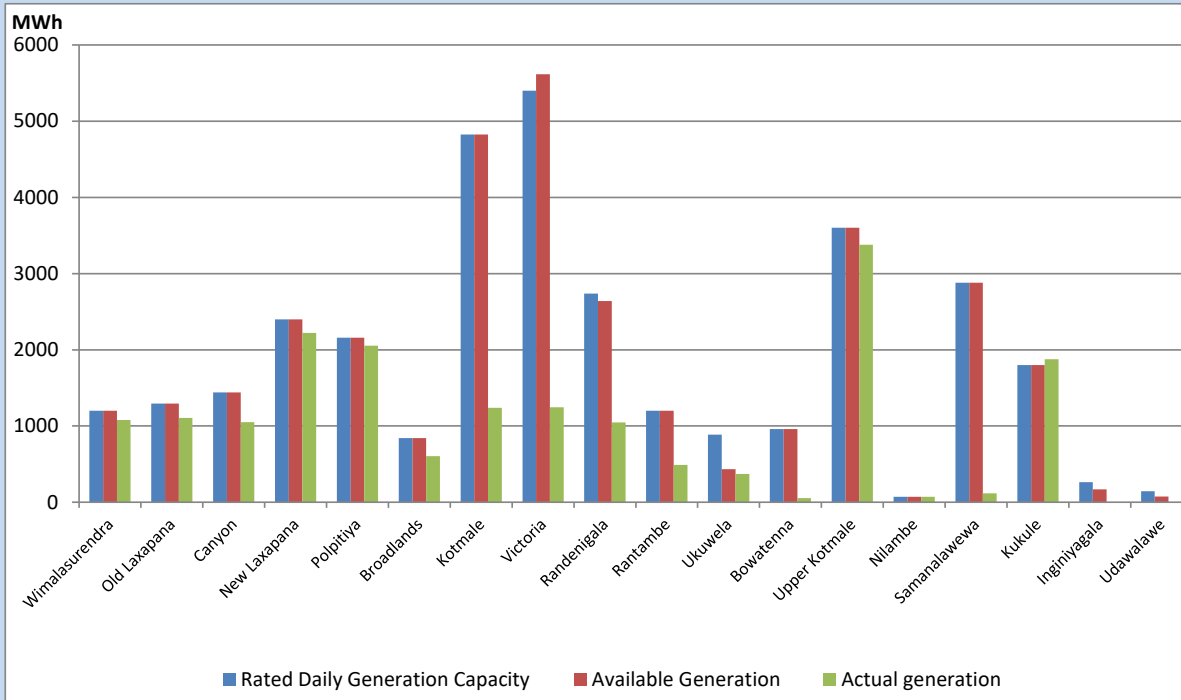


Note- Plant availability is recorded at 6.00 am on

October 24, 2022

Major Hydro Plant Dispatch

October 23, 2022

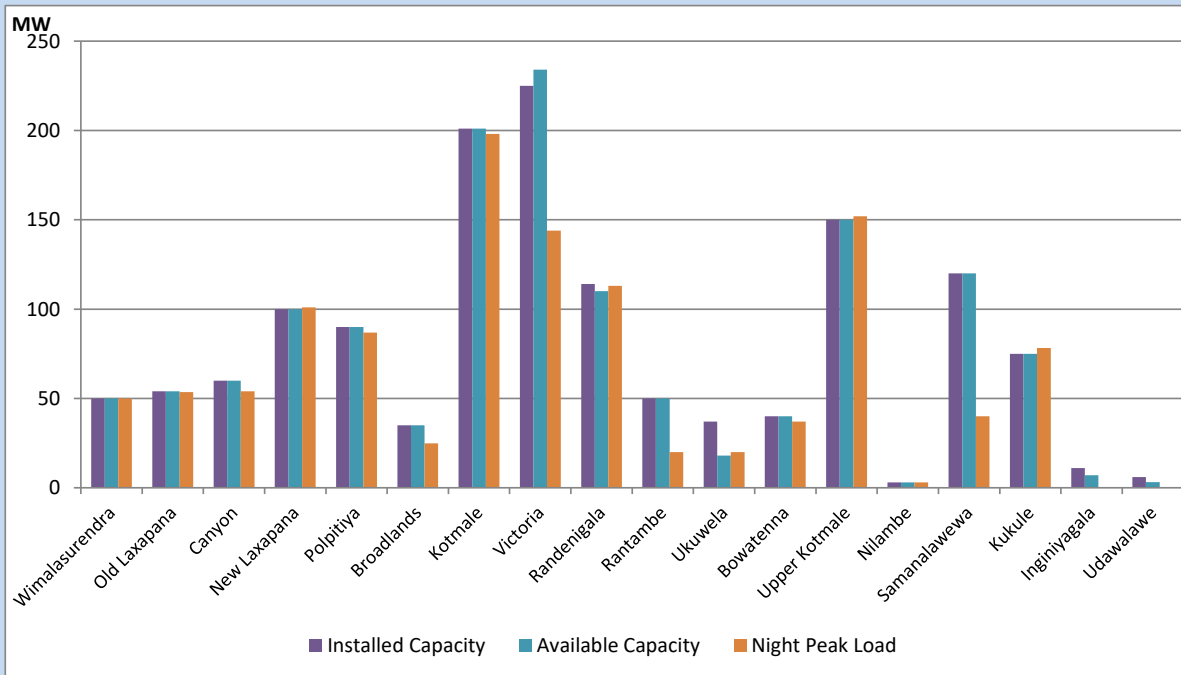


Available Generation is estimated based on plant availability at 6.00am on
Broadlands power plant is operating in the Commissioning Stage

October 24, 2022

Major Hydro Plant Loading at Night Peak

October 23, 2022



Note- Plant availability is recorded at 6.00 am on
Broadlands power plant is operating in the Commissioning Stage

October 24, 2022

Summary of Major Plant performance

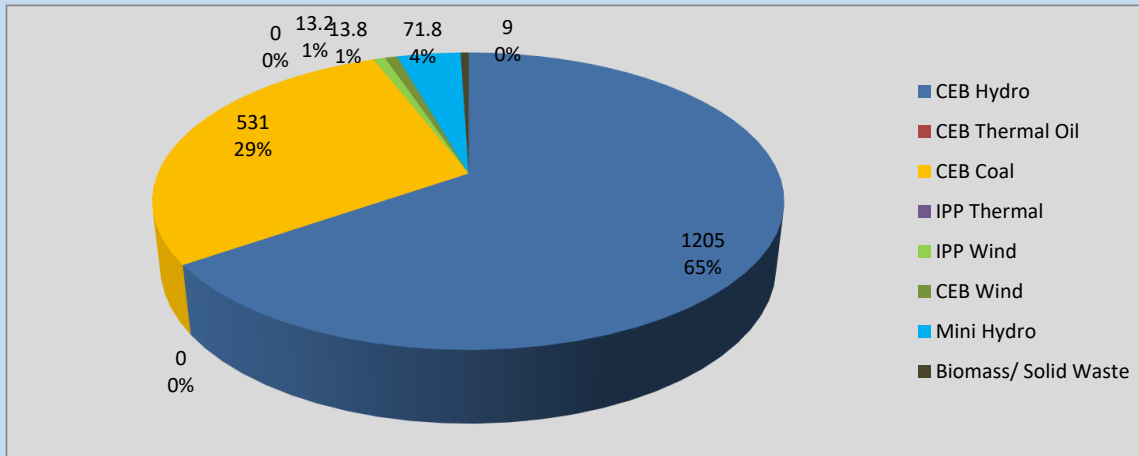
Plant	Installed Capacity	Plant Availability	Night peak Load	Plant Dispatch
	(MW)	(MW)	(MW)	(MWh)
Wimalasurendra	50	50	50	1,078
Old Laxapana	54	54	54	1,106
Canyon	60	60	54	1,051
New Laxapana	100	100	101	2,220
Polpitiya	90	90	87	2,054
Broadlands	35	35	25	605
Kotmale	201	201	198	1,240
Victoria	225	234	144	1,245
Randenigala	114	110	113	1,046
Rantambe	50	50	20	490
Ukuwela	37	18	20	371
Bowatenna	40	40	37	55
Upper Kotmale	150	150	152	3,378
Nilambe	3	3	3	72
Samanalawewa	120	120	40	116
Kukule	75	75	78	1,877
Inginiyagala	11	7	0	0
Udawalawe	6	3	0	0
Puttalam Coal I	270	270	261	4,761
Puttalam Coal II	270	0	0	0
Puttalam Coal III	270	270	270	4,806
KPS Small GTs	64	16	0	0
KPS GT 7	115	115	0	0
KCCP	161	0	0	0
Sapugaskanda A	70	29	0	0
Sapugaskanda B	70	63	0	0
Uthura Janani	26	16	0	0
Barge CEB	60	0	0	0
CEB-Thulhiriya	10	0	0	0
CEB-Kolonnawa	20	2	0	0
CEB-Mathugama	20	11	0	0
ACE Matara	24	0	0	0
Sojitz Kelanitissa	163	0	0	0
West Coast	270	270	0	0
ACE Embilipitiya	93	0	0	0
Total	3,397	2,463	1,814	30,534

Plant availability is the availability recorded at 6 am on

October 24, 2022

Contribution to the Night Peak in MW

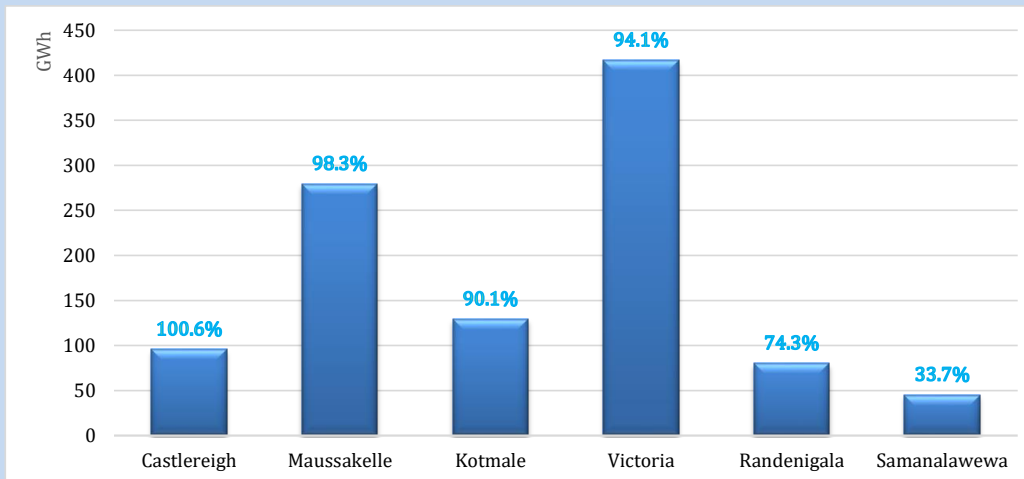
October 23, 2022



Night Peak*	1,843.4 MW
Day Peak	1,337.1 MW
Minimum Demand	947.7 MW

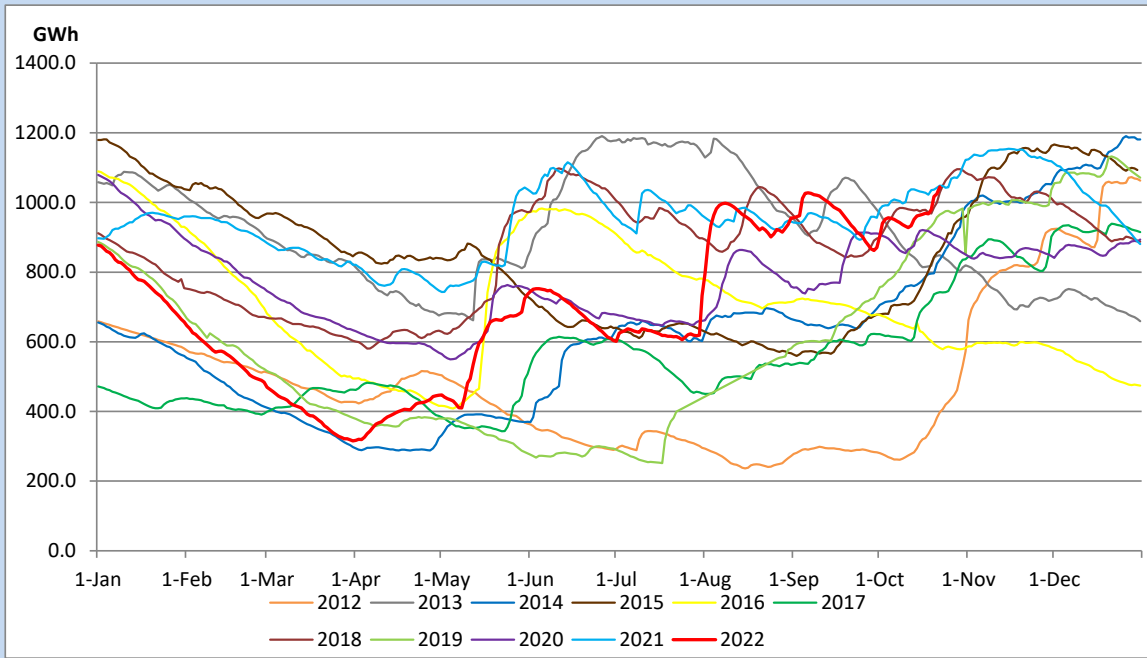
Above figures are excluding contribution from Roof Top Solar, 1MW solar, certain Wind plants and Mini Hydro plants

Reservoir Levels - as at 06.00 Hr on October 24, 2022

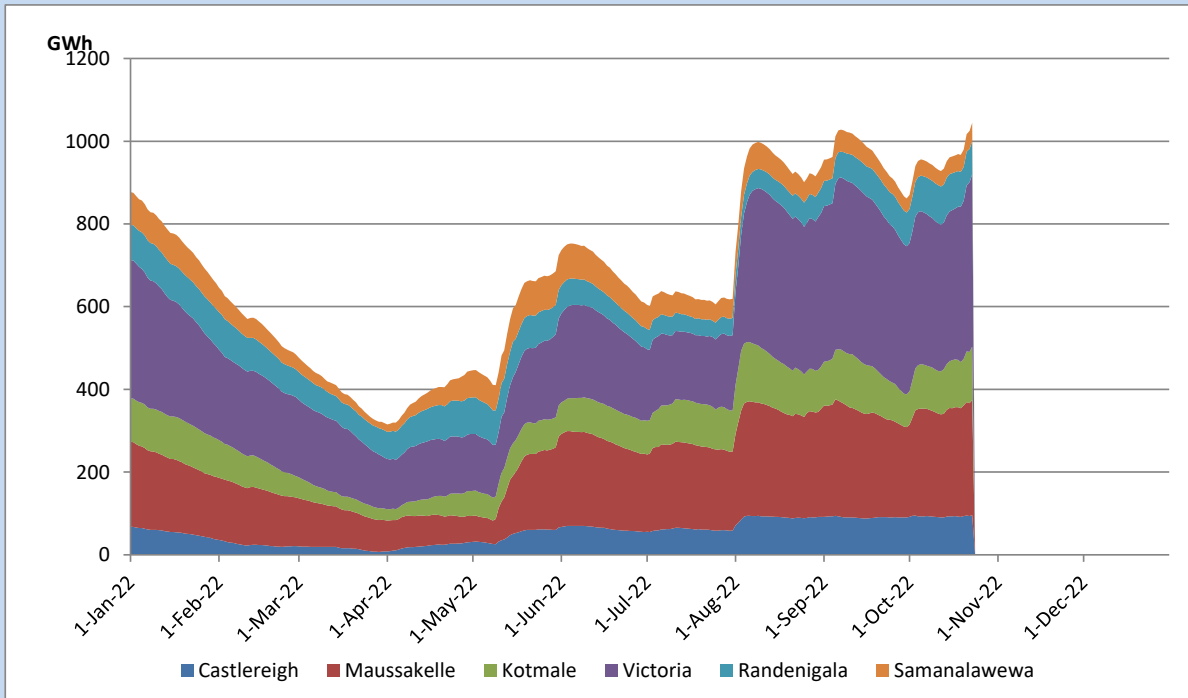


Total Reservoir Level	1044.6 GWh
% of Total capacity	86.7%

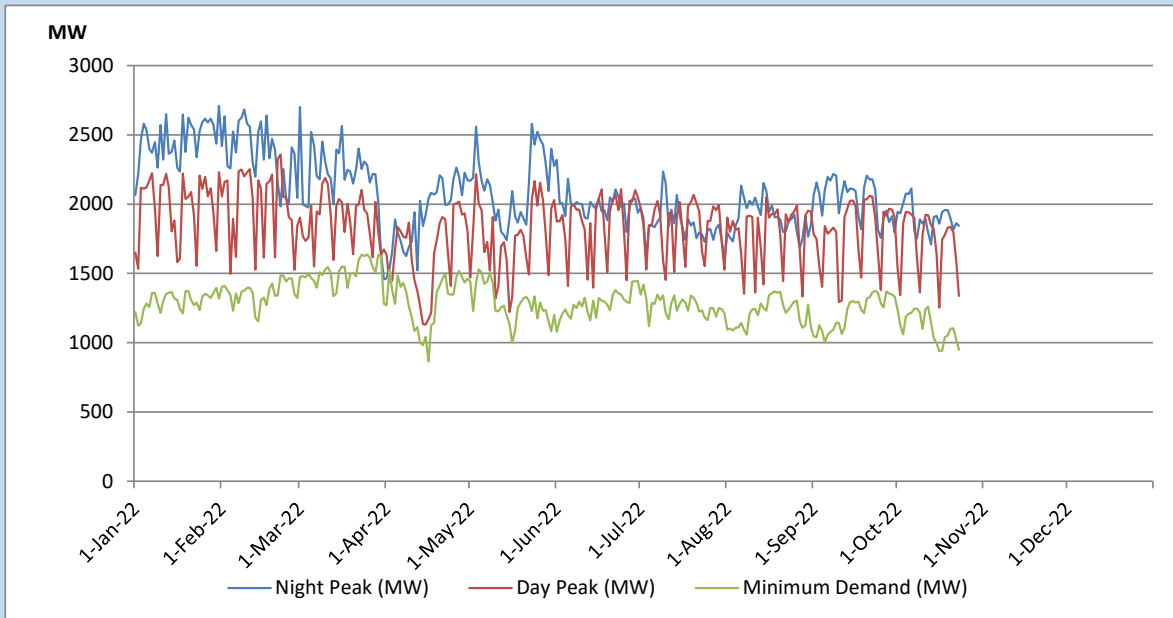
Comparison of Total Reservoir Storage Levels with Past Years



Variation of Major Hydro Reservoir Levels in the current year (GWh)



Variation of Demand during the current year

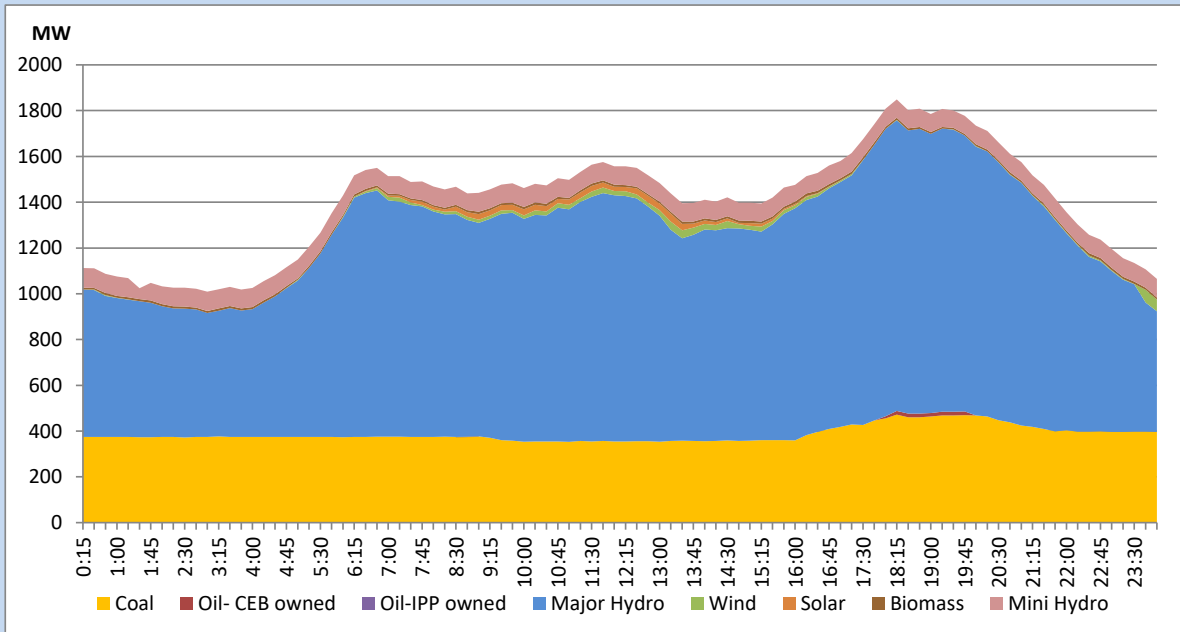


The above figures are excluding contribution from Roof Top Solar, 1MW solar, certain Wind plants and Mini Hydro plants

Daily Load Curve of the Previous day

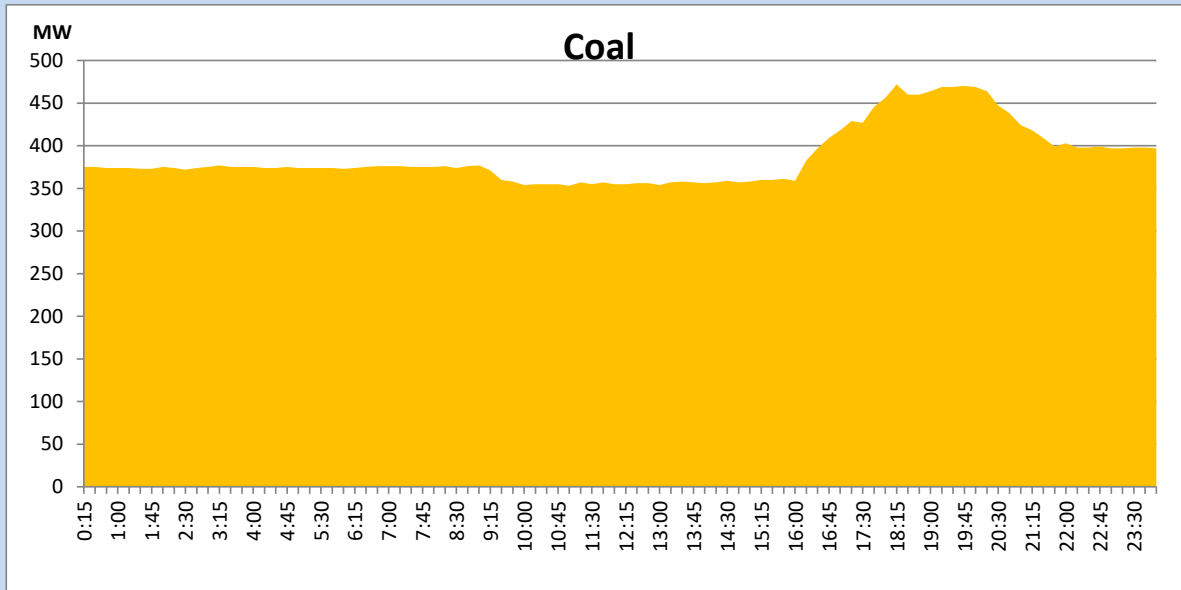
October 22, 2022

Solar and wind data is based on Telemetered Power Stations only



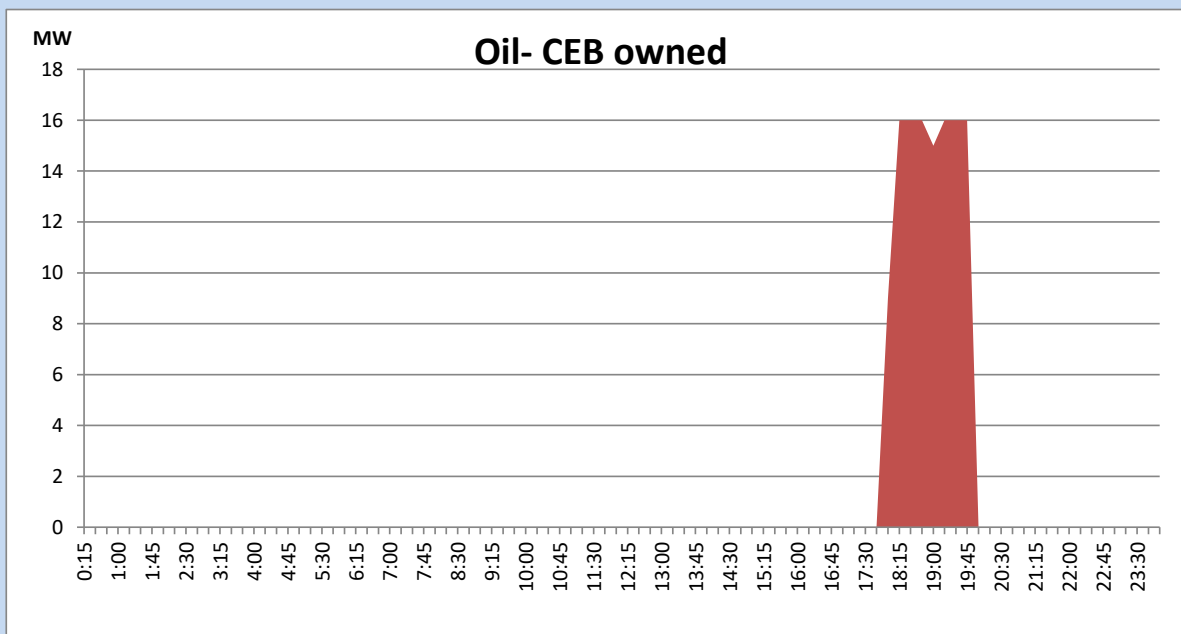
Coal Generation during the Previous day

October 22, 2022



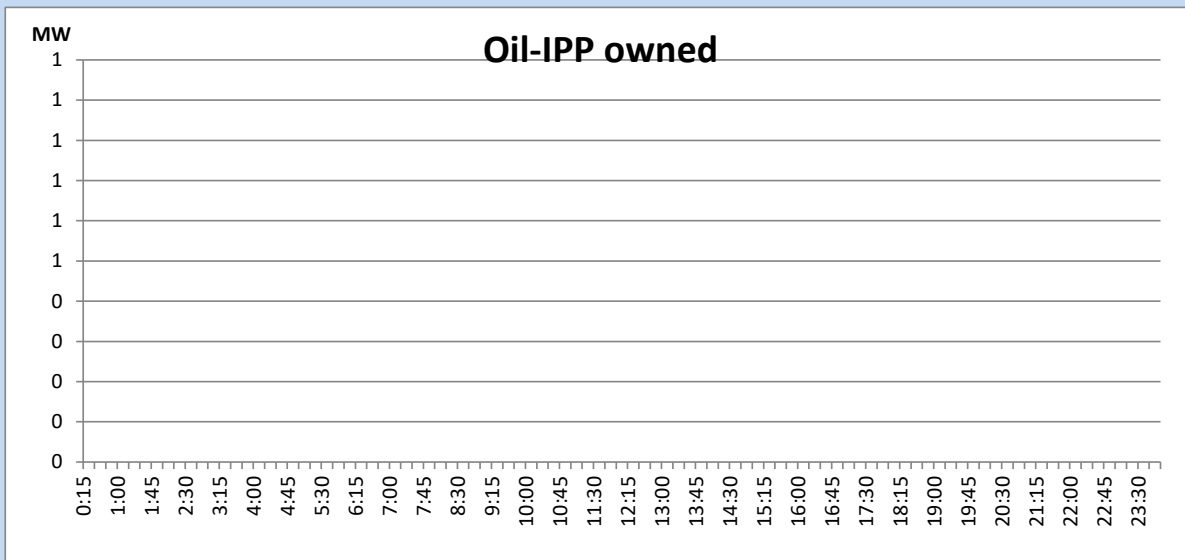
CEB Oil Plant Generation during the Previous day

October 22, 2022



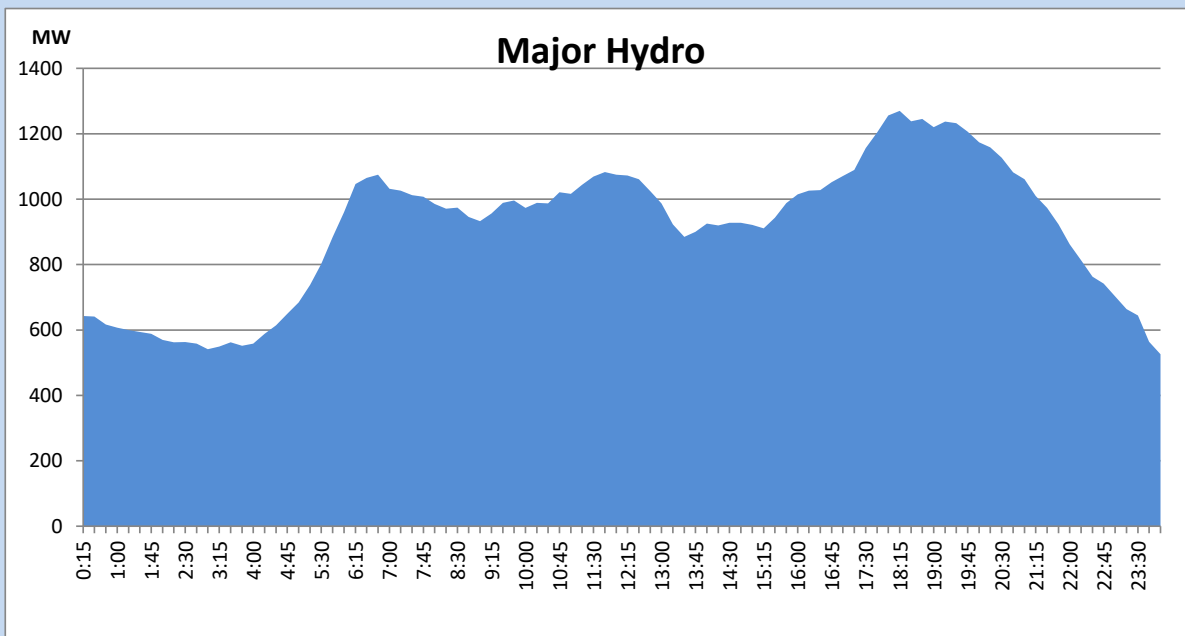
IPP Oil Plant Generation during the Previous day

October 22, 2022



Major Hydro Generation during the Previous day

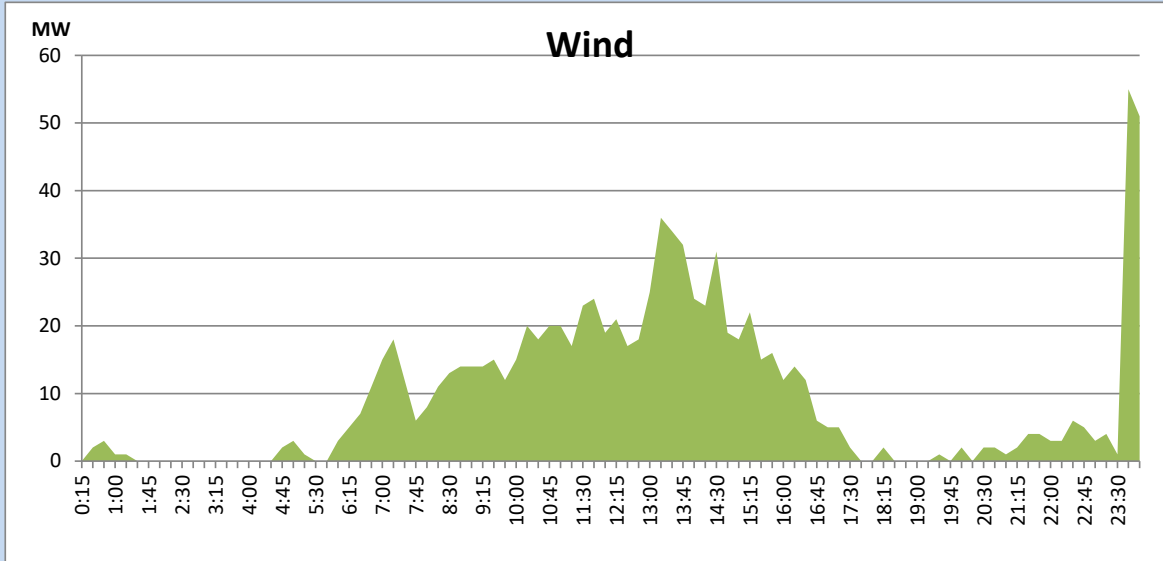
October 22, 2022



Wind Generation during the Previous day

October 22, 2022

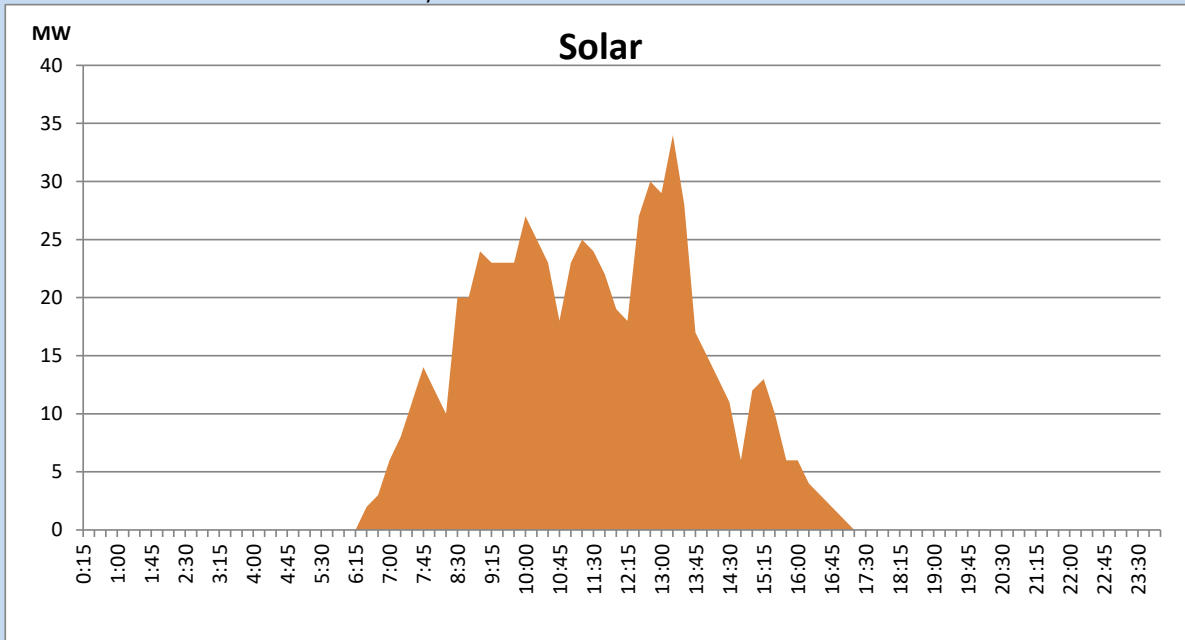
Based on Telemetered Power Stations only



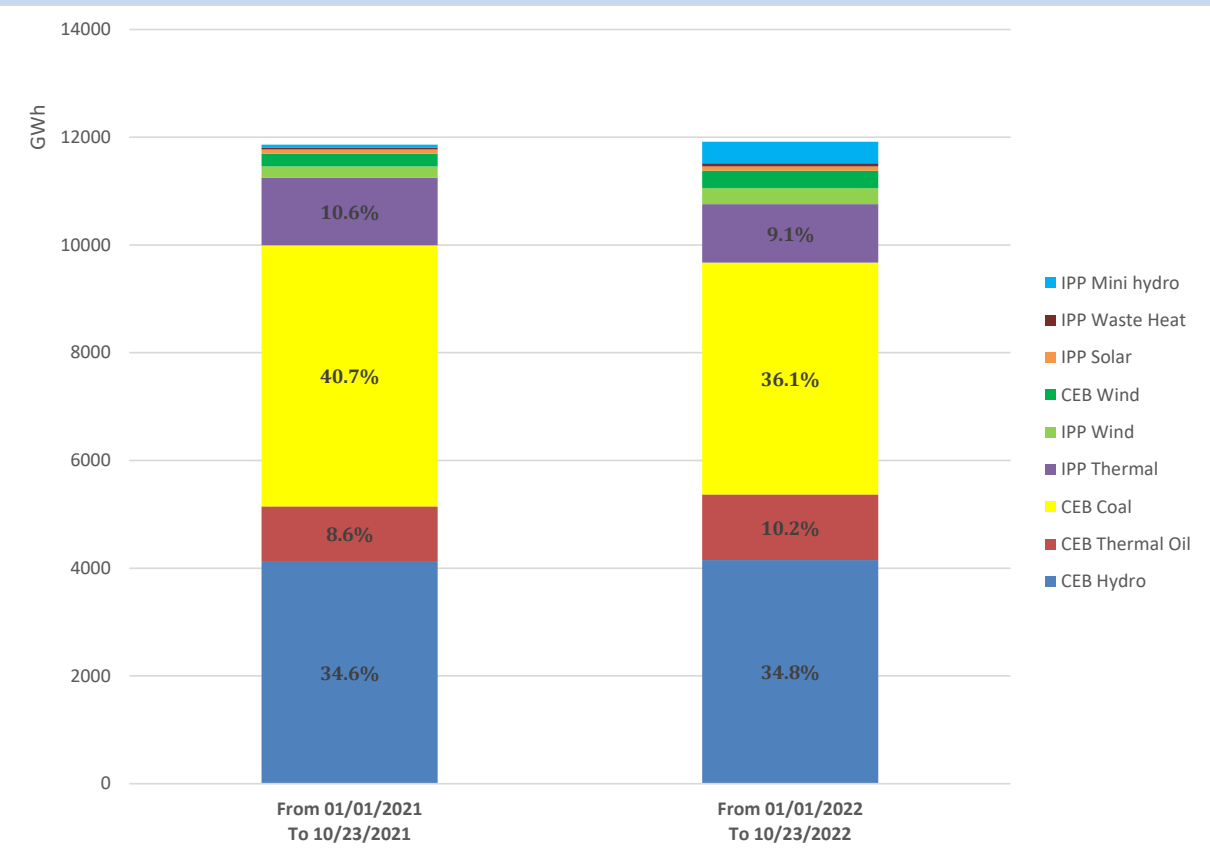
Solar Generation during the Previous day

October 22, 2022

Based on Telemetered Power Stations only



Cumulative Dispatch Comparison with Last Year



Thermal Plant Fuel types

Power Station	Primary Fuel
CEB Thermal	
Sapugaskanda 1	Heavy Fuel
Sapugaskanda 2	Heavy Fuel
Kelanitissa Small Gas Turbines	Auto Diesel
GT 7 - Kelanitissa	Auto Diesel
Kelanitissa CCY	Naphtha or Diesel
Lakvijaya 1	Coal
Lakvijaya 2	Coal
Lakvijaya 3	Coal
Uthuru Janani	Heavy Fuel
Barge CEB	Heavy Fuel

Power Station	Primary Fuel
Private Thermal	
Sojitz - Kelanitissa	Auto Diesel
West Coast	Auto Diesel / Heavy Fuel
ACE Matara	Heavy Fuel
ACE Embilipitiya	Heavy Fuel

Major Incidents during the day -as reported by CEB morning of

October 24, 2022

- 1) Laxapana and Norton pond spilling continues to the present hour. Canyon pond spilled intermittently and continues to the present hour.
- 2) Upper Kotmale spilling started at 1:50hrs(24/10/2022).
- 3) Castlereigh reservoir spilling started at 3:40hrs(24/10/2022).
- 4) Sapugaskanda GSS 132/33kV T/F 01 tripped at 05:01hrs(24/10/2022) with the indication of earthing transformer PRV trip. The T/F is yet to be restored.
- 5) Kukule pond spilling continues to the present hour.