

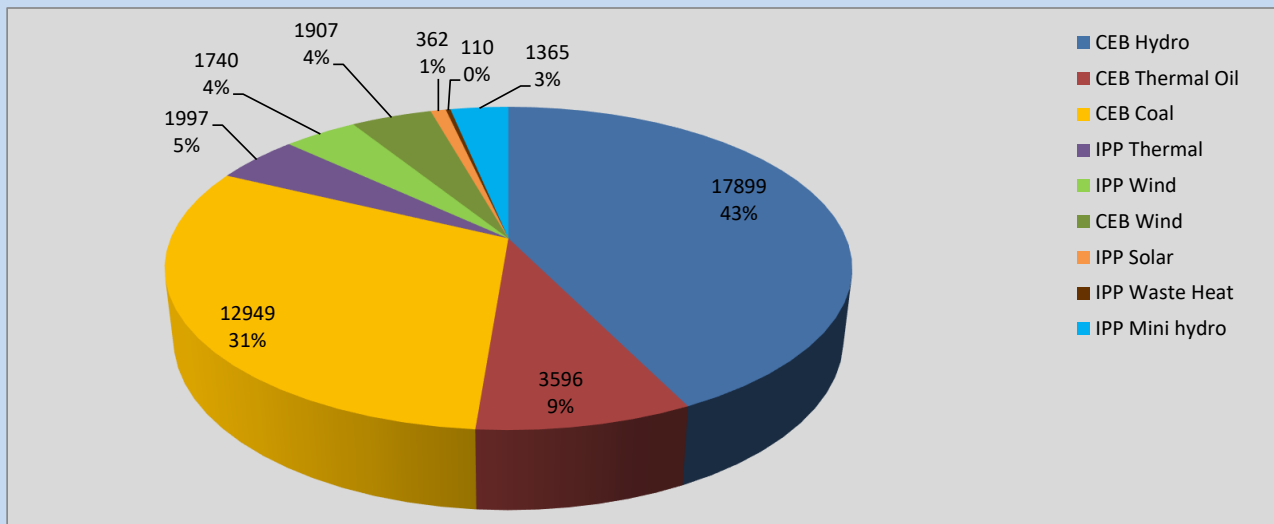
Generation and Reservoirs Statistics

September 23, 2022



PUBLIC UTILITIES COMMISSION OF SRI LANKA

Daily Generation Mix in MWh



Total Generation **41,925 MWh**

Note: Above data is excluding contribution from Roof Top Solar, 1MW Solar and certain Mini Hydro plants

Cumulative Dispatch

Note: Following data is Excluding contribution from Roof Top Solar, 1MW solar and Mini Hydro plants

For Current Month

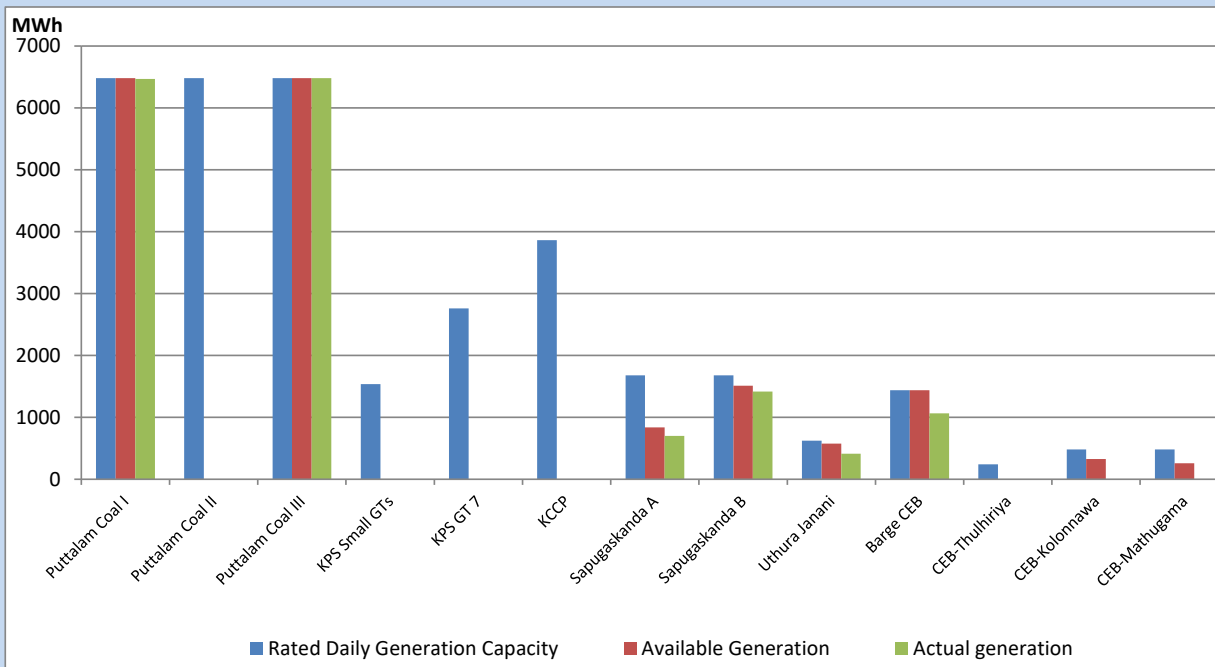
Category	Dispatch (GWh)	
CEB Hydro	443.29	48.90%
CEB Thermal Oil	34.08	3.76%
CEB Coal	263.98	29.12%
IPP Thermal	18.97	2.09%
SPP Wind	41.11	4.54%
CEB Wind	50.91	5.62%
SPP Solar	7.13	0.79%
SPP Solid Waste	4.68	0.52%
Mini Hydro	42.33	4.67%
Total	906.48	

For Current Year

Category	Dispatch (GWh)	
CEB Hydro	3,577.0	33.15%
CEB Thermal Oil	1,146.4	10.62%
CEB Coal	3,977.1	36.86%
IPP Thermal	1,045.9	9.69%
SPP Wind	271.9	2.52%
CEB Wind	297.0	2.75%
SPP Solar	69.4	0.64%
SPP Solid Waste	53.8	0.50%
Mini Hydro	352.3	3.27%
Total	10,790.6	

CEB owned Thermal Plant Dispatch

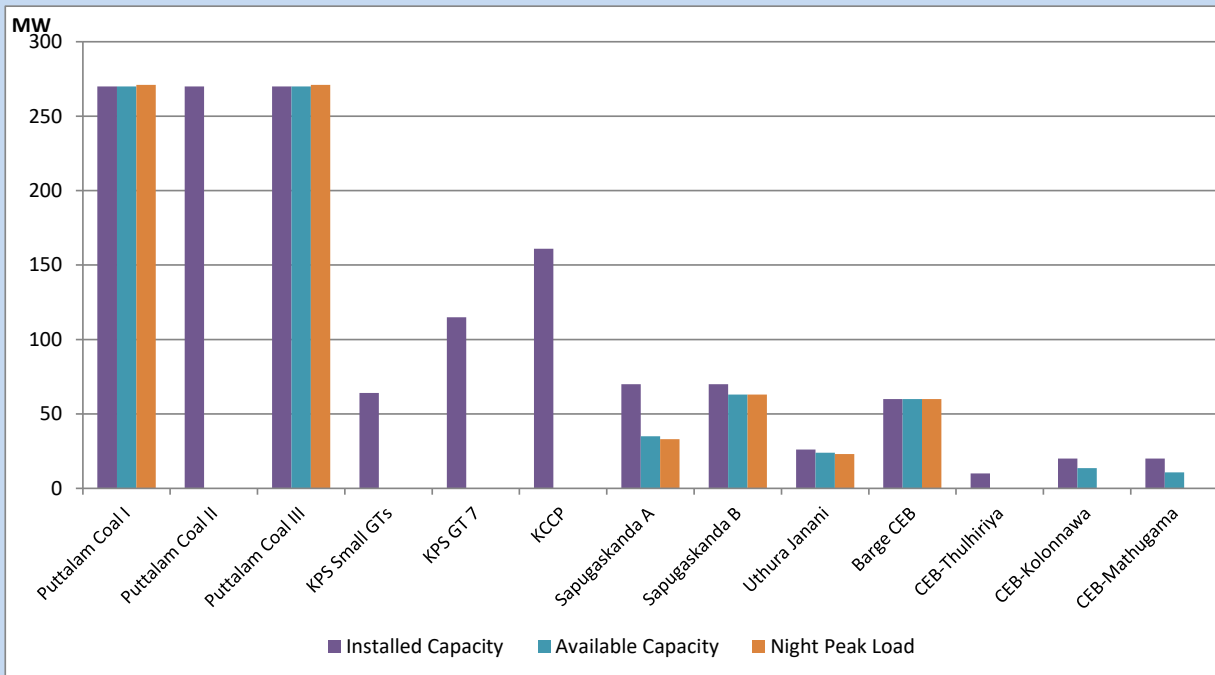
September 23, 2022



Available Generation is estimated based on plant availability at 6.00am on

September 24, 2022

CEB owned Thermal Plant Loading at the Night Peak



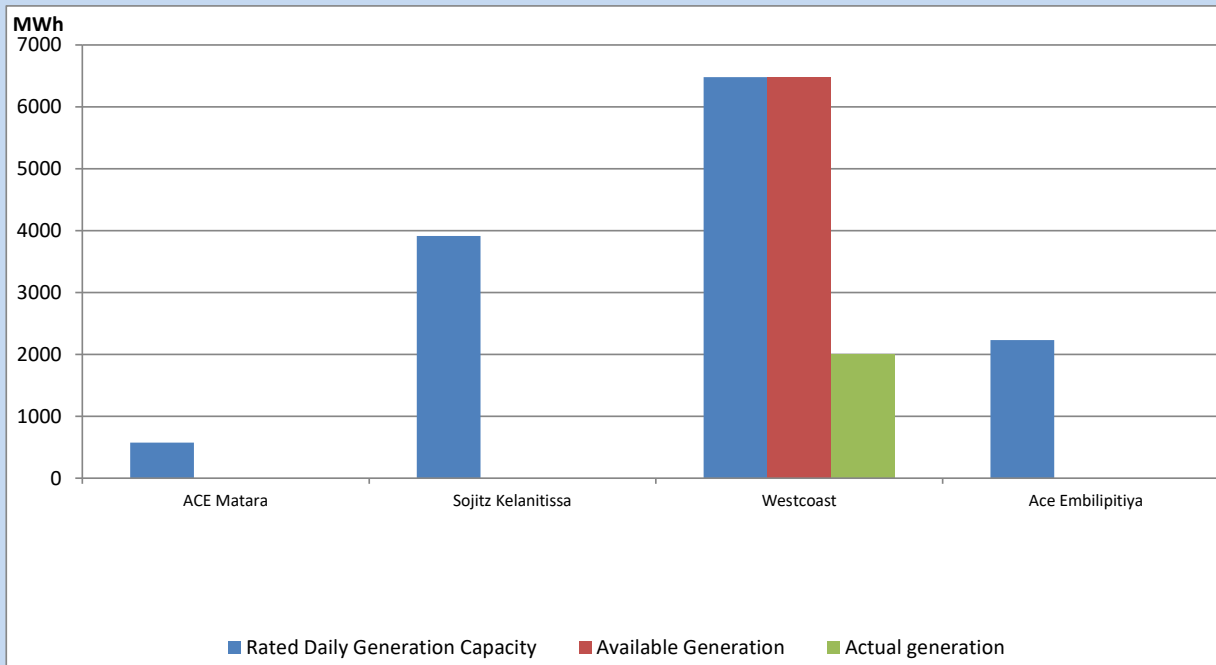
Note- Plant availability is recorded at 6.00 am on

September 24, 2022

IPP owned Thermal Plant Dispatch

September 23, 2022

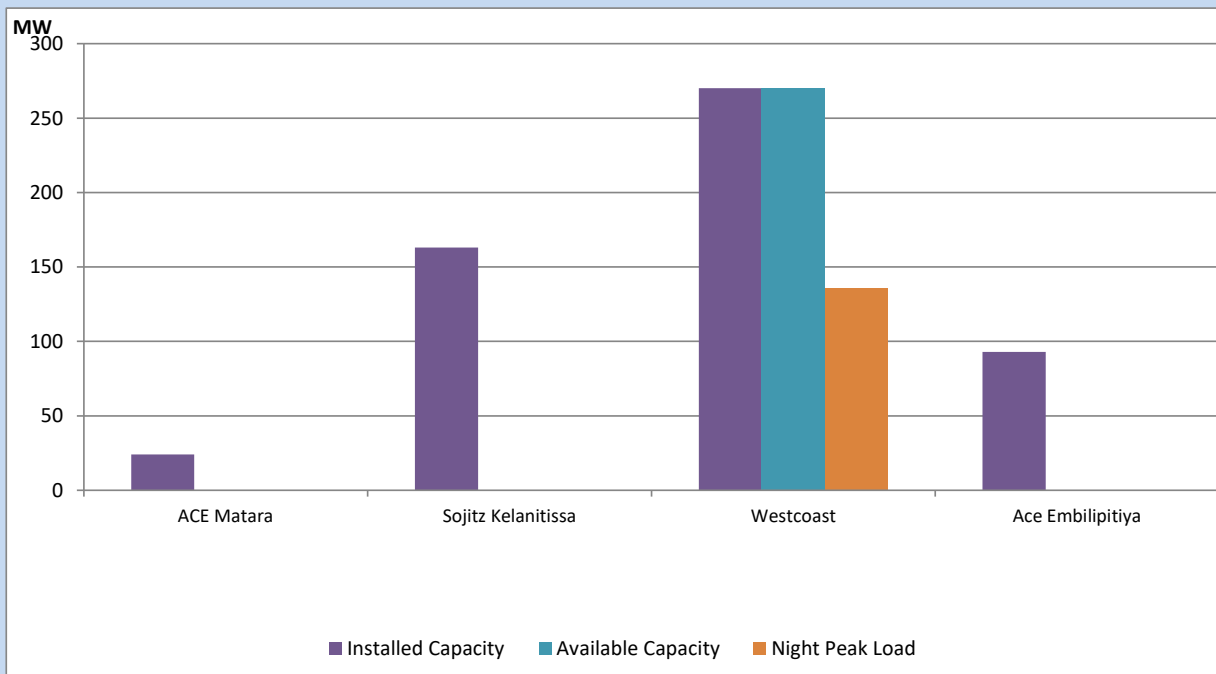
Asia Power, V Power Pallekale, Vpower Galle, V Power Horana, Vpower Hambantota, Vpower Valachchena and Altaqa Mahiyanganaya are not available due to expiration of PPAs



Available Generation is estimated based on plant availability at 6.00am on

September 24, 2022

IPP owned Thermal Plant Loading at the Night Peak

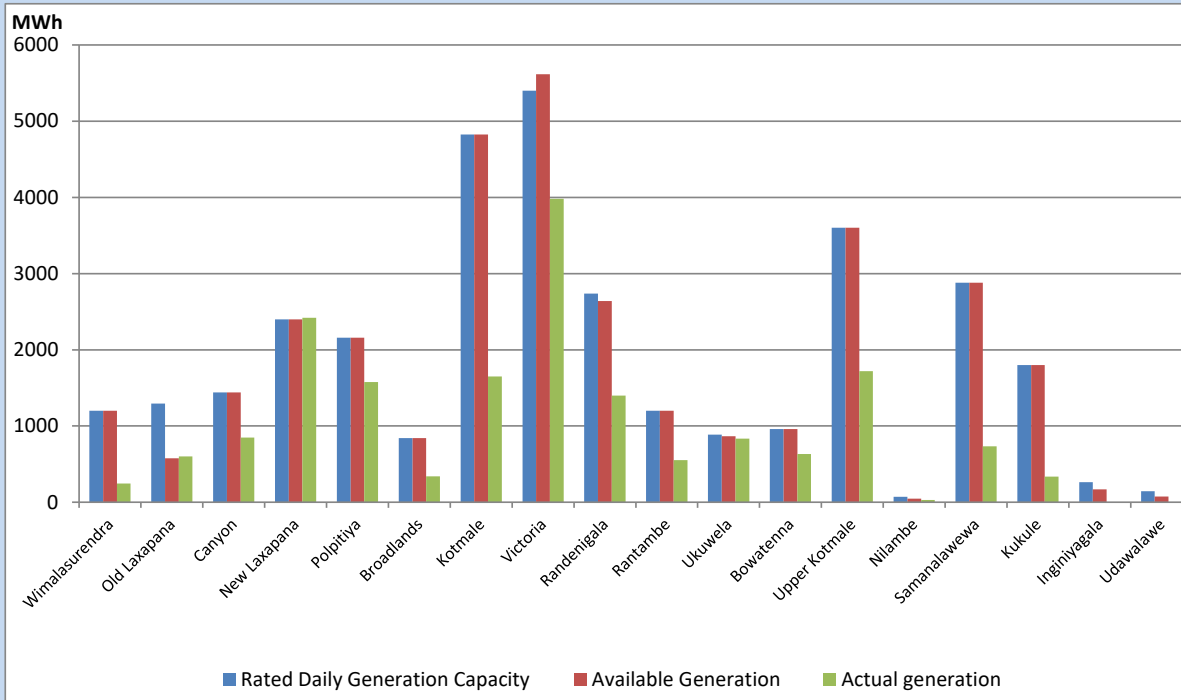


Note- Plant availability is recorded at 6.00 am on

September 24, 2022

Major Hydro Plant Dispatch

September 23, 2022

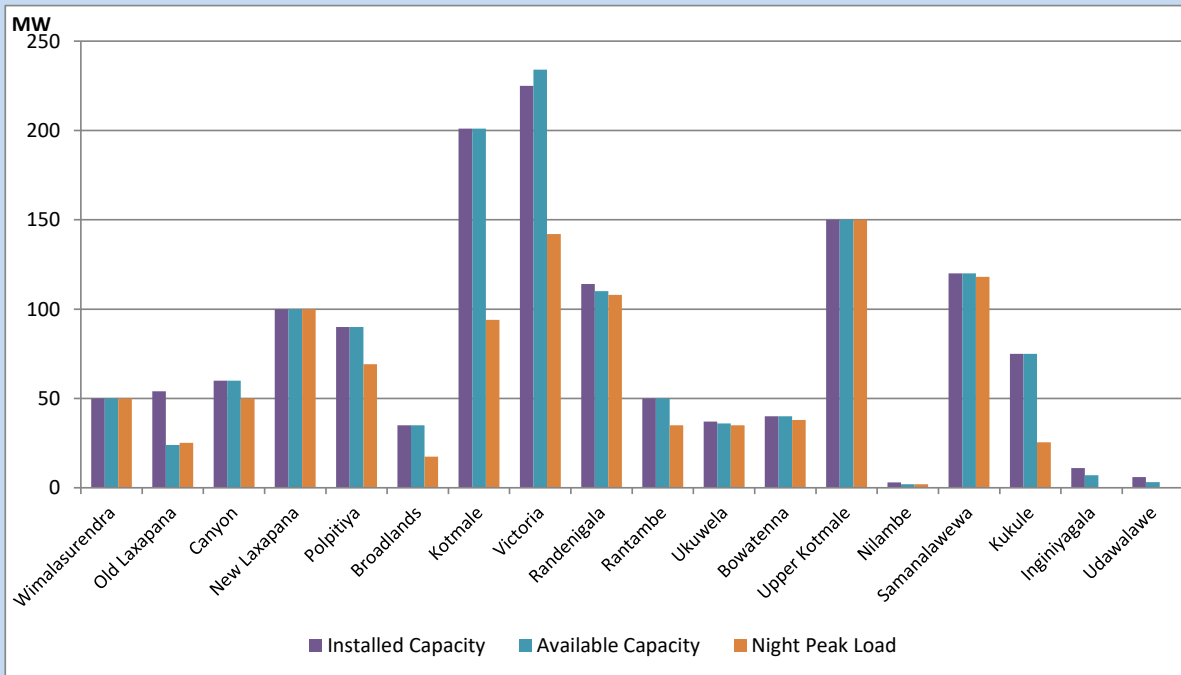


Available Generation is estimated based on plant availability at 6.00am on
Broadlands power plant is operating in the Commissioning Stage

September 24, 2022

Major Hydro Plant Loading at Night Peak

September 23, 2022



Note- Plant availability is recorded at 6.00 am on
Broadlands power plant is operating in the Commissioning Stage

September 24, 2022

Summary of Major Plant performance

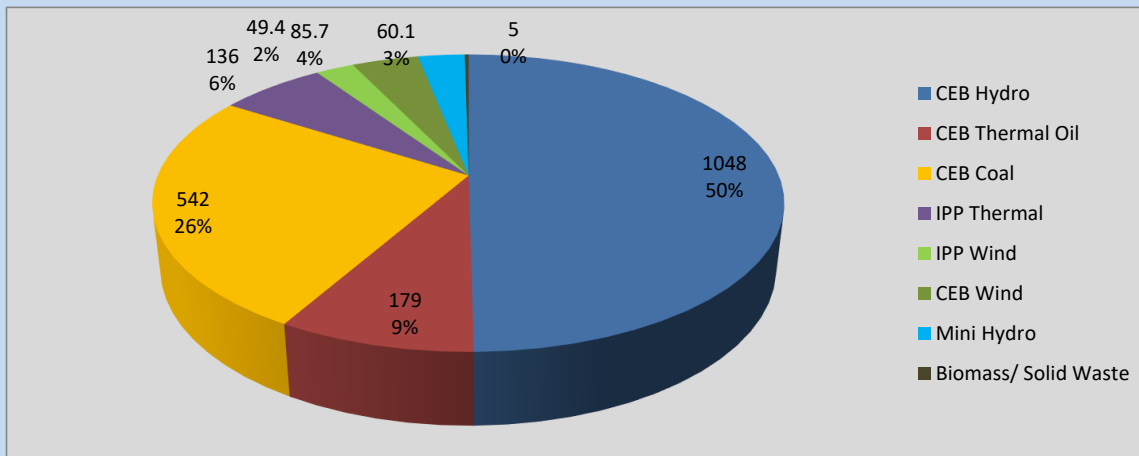
Plant	Installed Capacity	Plant Availability	Night peak Load	Plant Dispatch
	(MW)	(MW)	(MW)	(MWh)
Wimalasurendra	50	50	50	247
Old Laxapana	54	24	25	600
Canyon	60	60	50	850
New Laxapana	100	100	100	2,420
Polpitiya	90	90	69	1,578
Broadlands	35	35	17	339
Kotmale	201	201	94	1,650
Victoria	225	234	142	3,983
Randenigala	114	110	108	1,398
Rantambe	50	50	35	552
Ukuwela	37	36	35	834
Bowatenna	40	40	38	633
Upper Kotmale	150	150	150	1,720
Nilambe	3	2	2	28
Samanalawewa	120	120	118	732
Kukule	75	75	25	335
Inginiyagala	11	7	0	0
Udawalawe	6	3	0	0
Puttalam Coal I	270	270	271	6,467
Puttalam Coal II	270	0	0	0
Puttalam Coal III	270	270	271	6,482
KPS Small GTs	64	0	0	0
KPS GT 7	115	0	0	0
KCCP	161	0	0	0
Sapugaskanda A	70	35	33	700
Sapugaskanda B	70	63	63	1,417
Uthura Janani	26	24	23	415
Barge CEB	60	60	60	1,064
CEB-Thulhiriya	10	0	0	0
CEB-Kolonnawa	20	14	0	0
CEB-Mathugama	20	11	0	0
ACE Matara	24	0	0	0
Sojitz Kelanitissa	163	0	0	0
West Coast	270	270	136	1,997
ACE Embilipitiya	93	0	0	0
Total	3,397	2,404	2,116	41,925

Plant availability is the availability recorded at 6 am on

September 24, 2022

Contribution to the Night Peak in MW

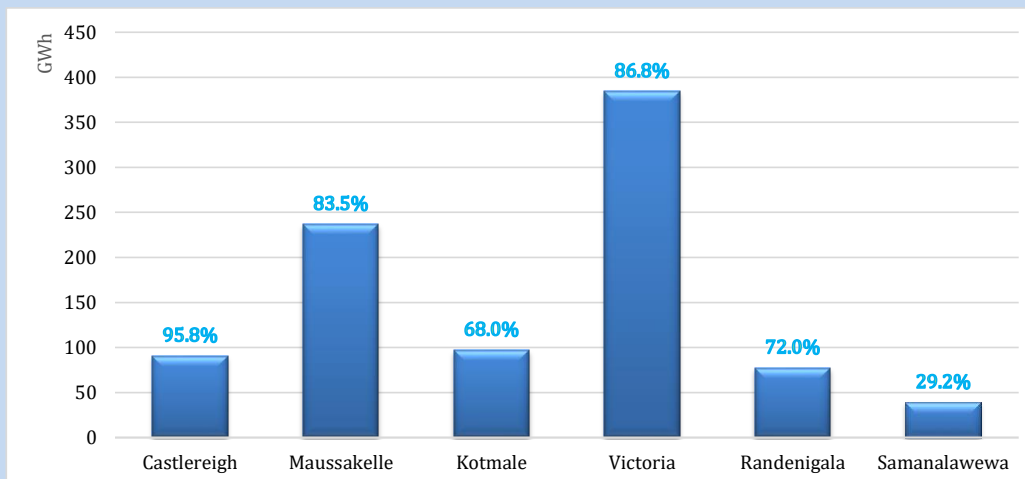
September 23, 2022



Night Peak*	2,105.2 MW
Day Peak	1,897.0 MW
Minimum Demand	1,374.1 MW

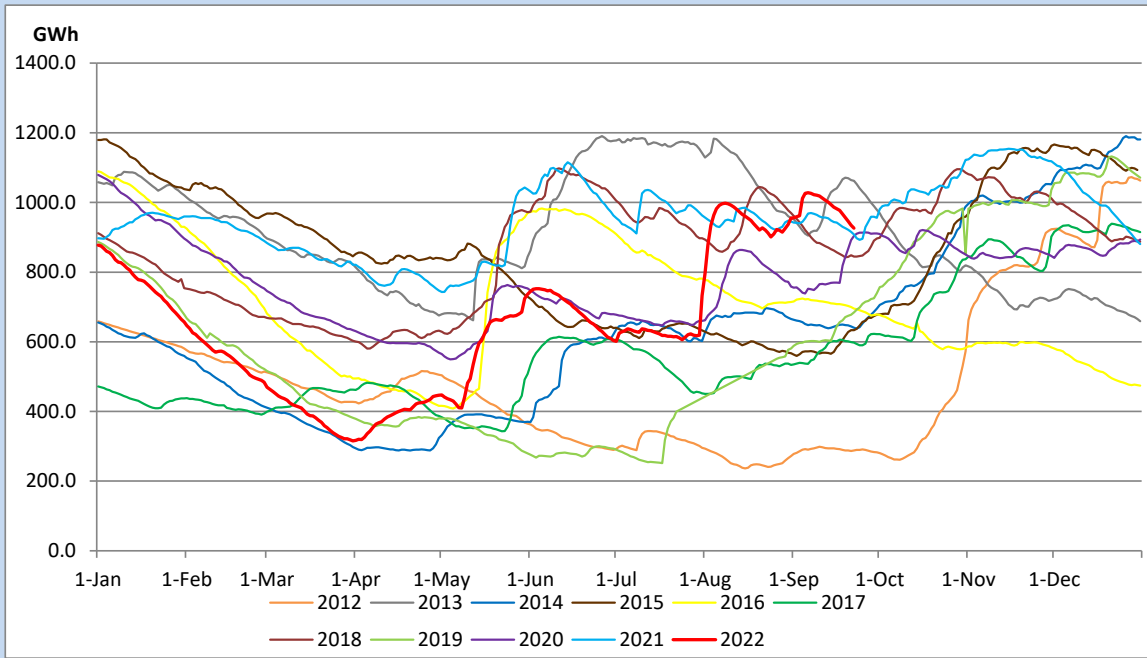
Above figures are excluding contribution from Roof Top Solar, 1MW solar, certain Wind plants and Mini Hydro plants

Reservoir Levels - as at 06.00 Hr on September 24, 2022

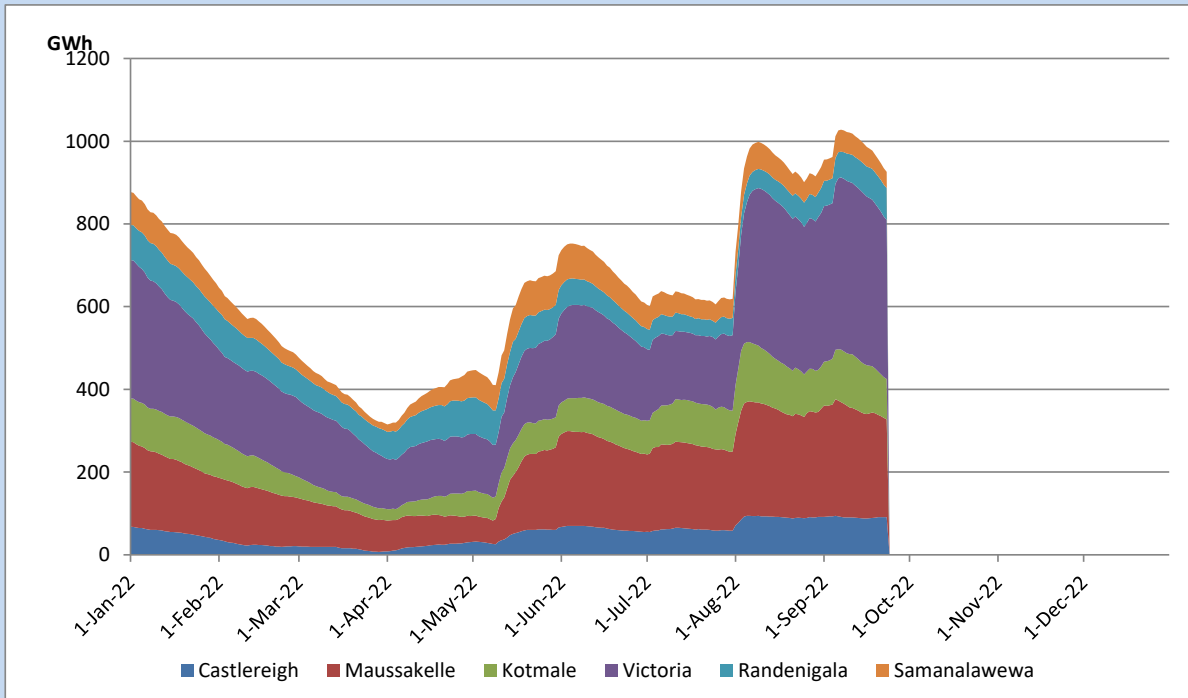


Total Reservoir Level	925.9 GWh
% of Total capacity	76.8%

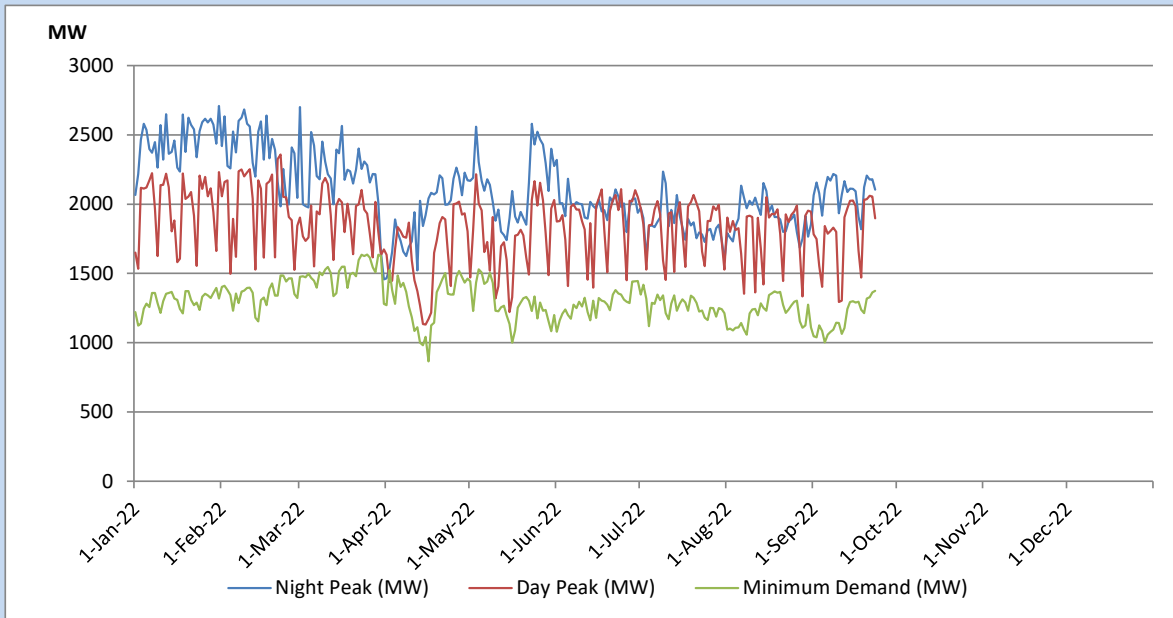
Comparison of Total Reservoir Storage Levels with Past Years



Variation of Major Hydro Reservoir Levels in the current year (GWh)



Variation of Demand during the current year

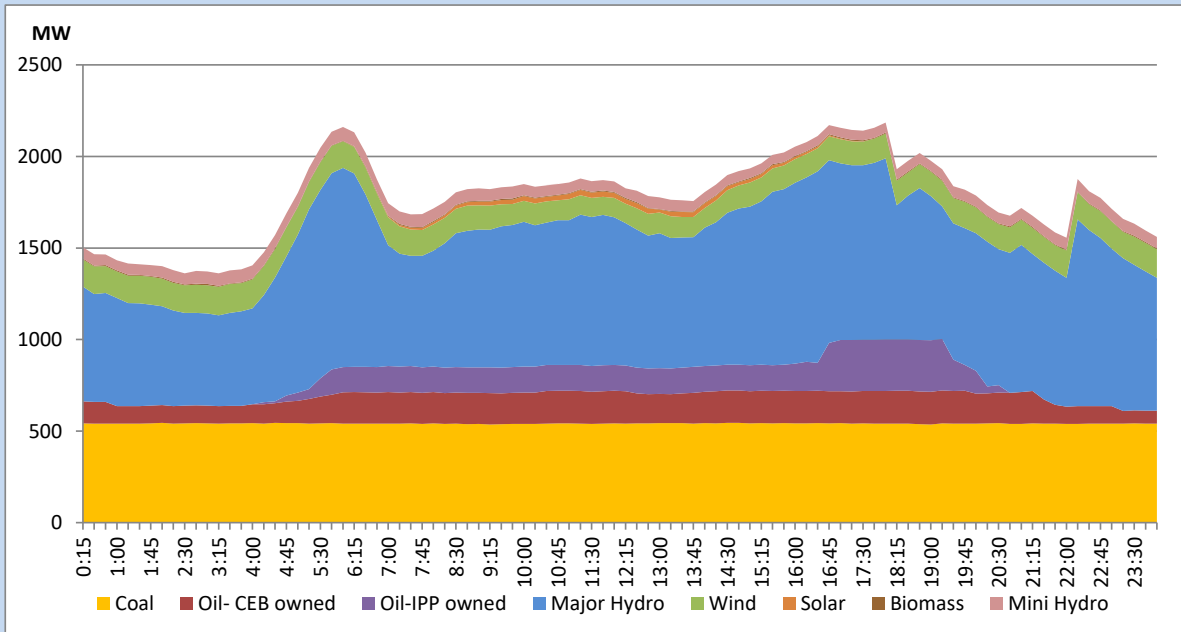


The above figures are excluding contribution from Roof Top Solar, 1MW solar, certain Wind plants and Mini Hydro plants

Daily Load Curve of the Previous day

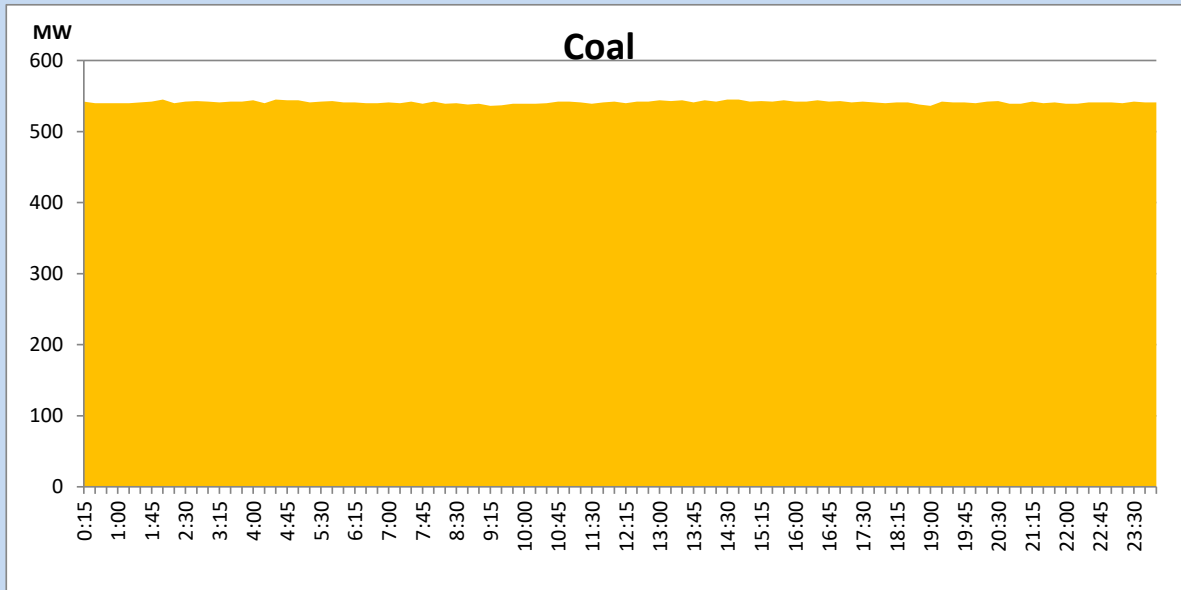
September 22, 2022

Solar and wind data is based on Telemetered Power Stations only



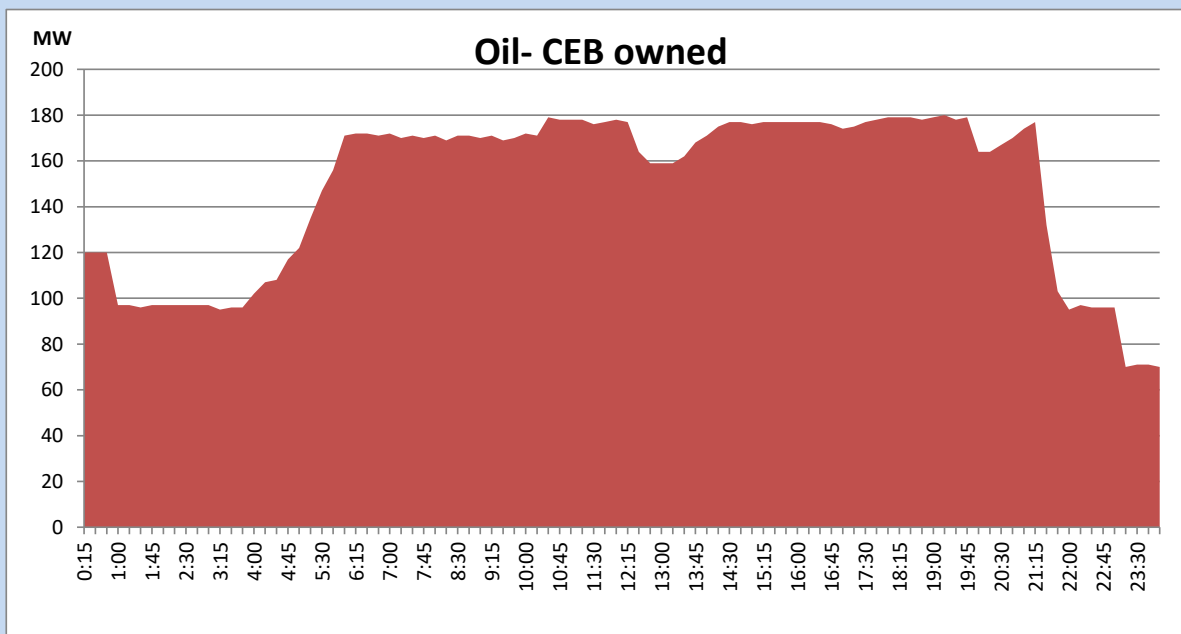
Coal Generation during the Previous day

September 22, 2022



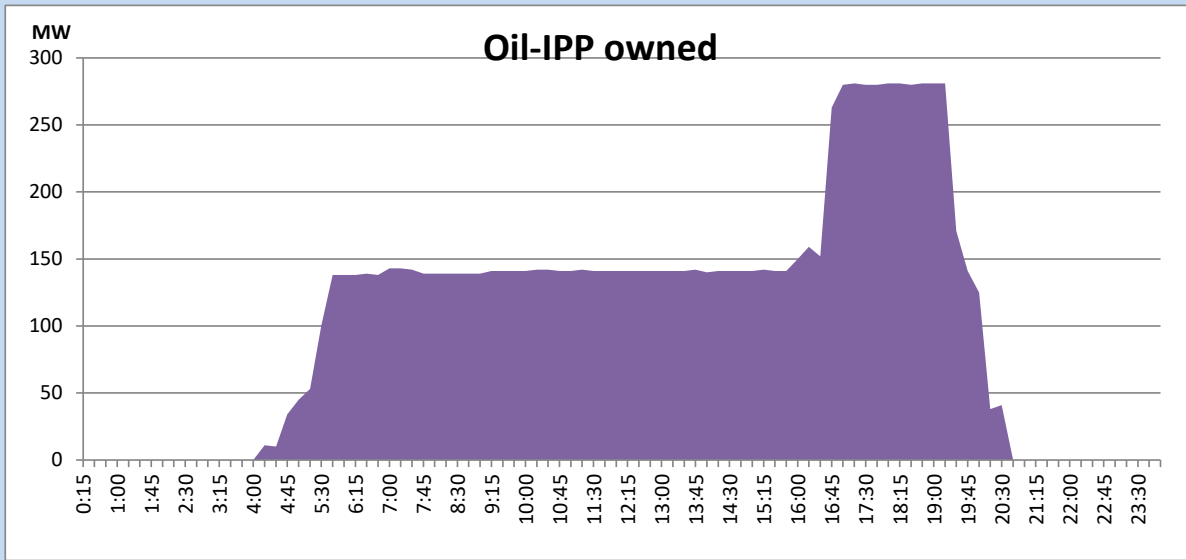
CEB Oil Plant Generation during the Previous day

September 22, 2022



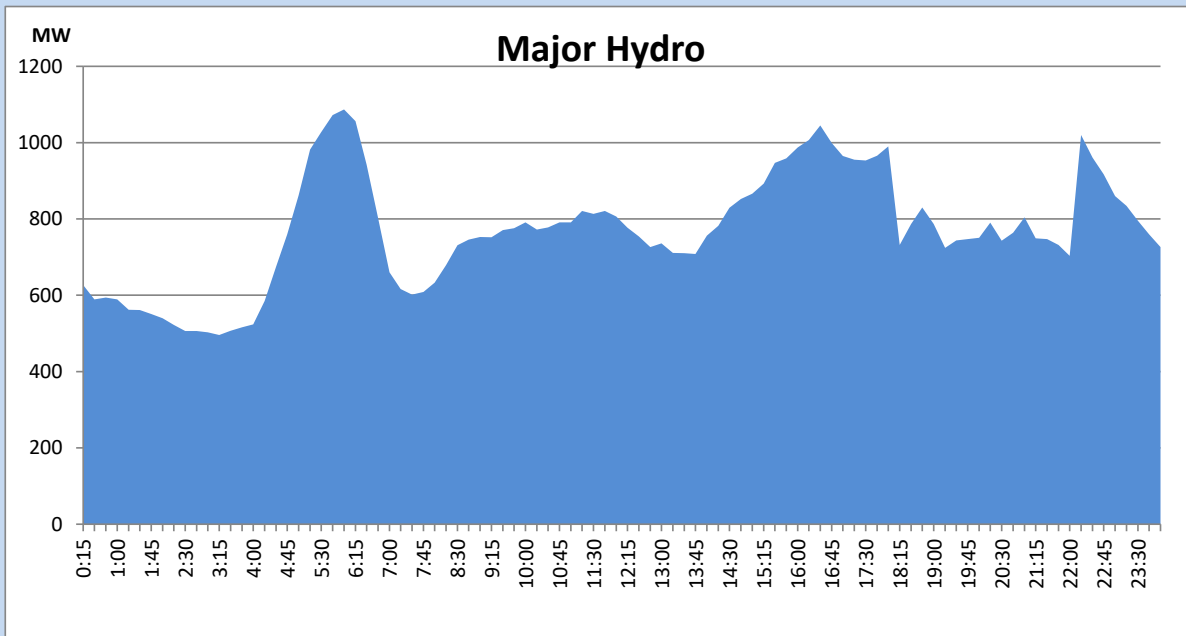
IPP Oil Plant Generation during the Previous day

September 22, 2022



Major Hydro Generation during the Previous day

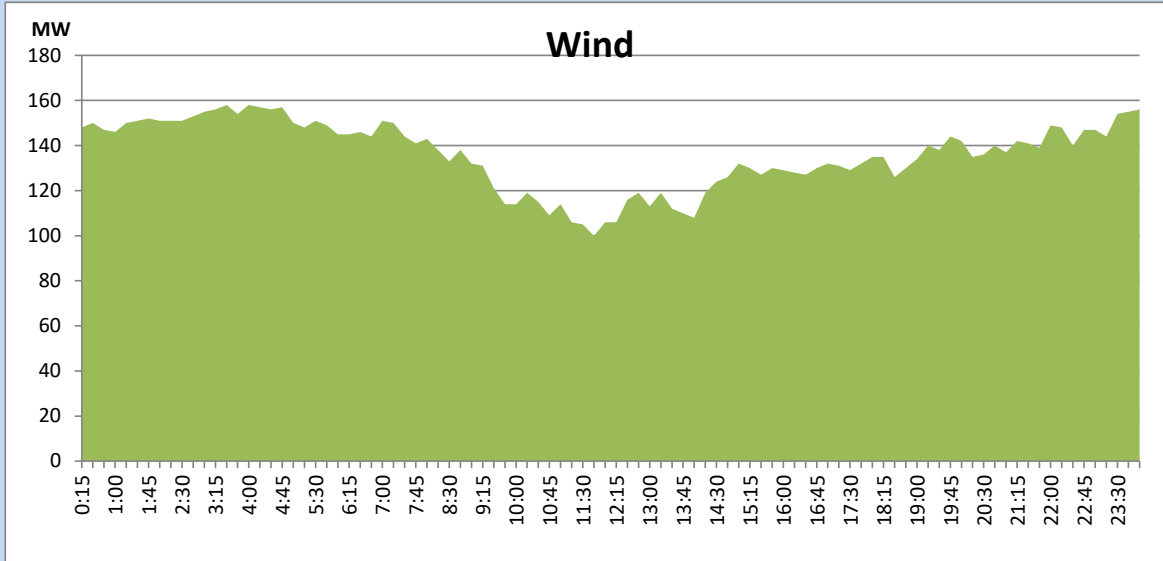
September 22, 2022



Wind Generation during the Previous day

September 22, 2022

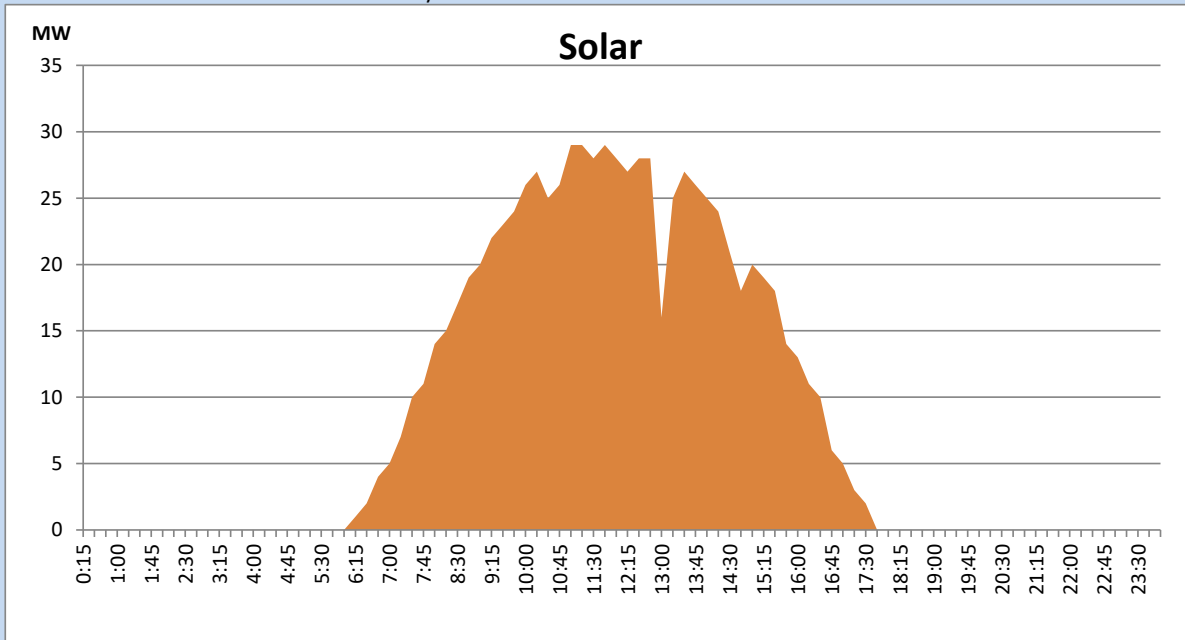
Based on Telemetered Power Stations only



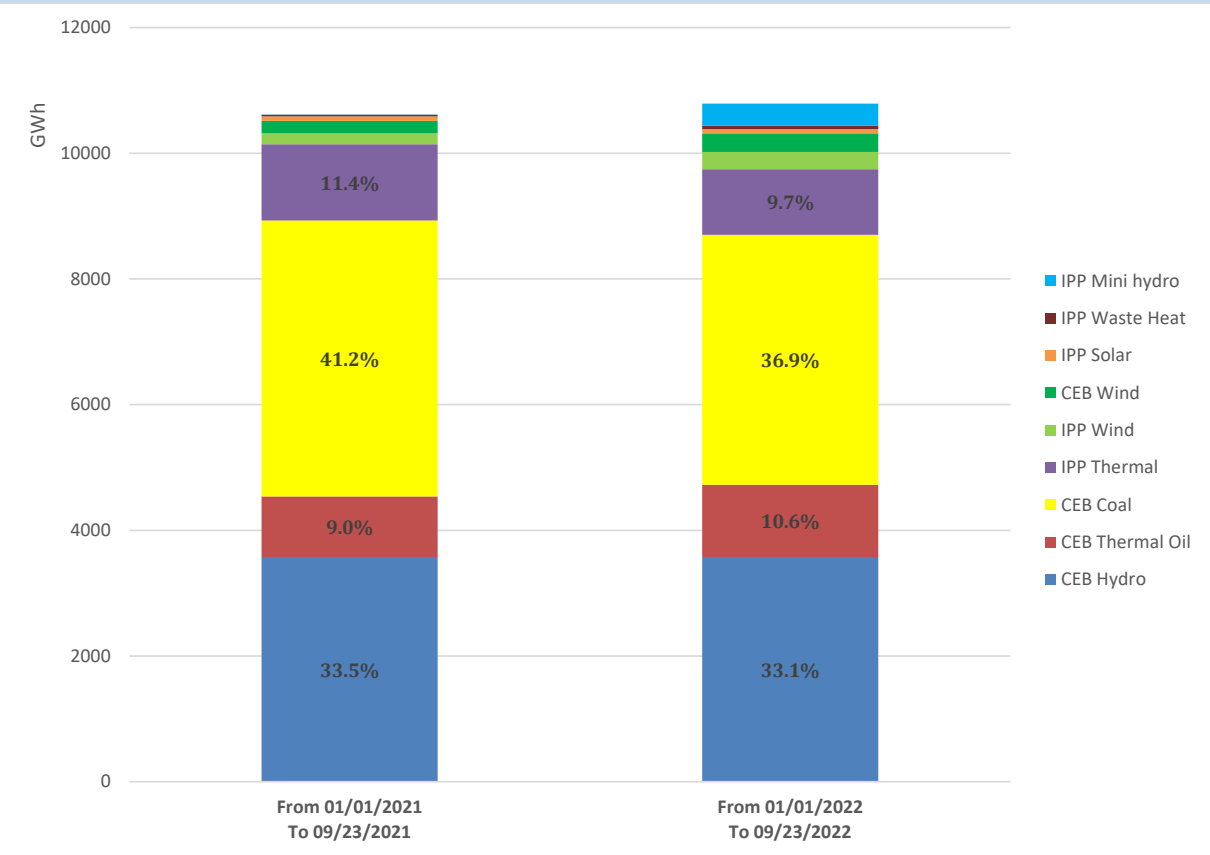
Solar Generation during the Previous day

September 22, 2022

Based on Telemetered Power Stations only



Cumulative Dispatch Comparison with Last Year



Thermal Plant Fuel types

Power Station	Primary Fuel
CEB Thermal	
Sapugaskanda 1	Heavy Fuel
Sapugaskanda 2	Heavy Fuel
Kelanitissa Small Gas Turbines	Auto Diesel
GT 7 - Kelanitissa	Auto Diesel
Kelanitissa CCY	Naphtha or Diesel
Lakvijaya 1	Coal
Lakvijaya 2	Coal
Lakvijaya 3	Coal
Uthuru Janani	Heavy Fuel
Barge CEB	Heavy Fuel

Power Station	Primary Fuel
Private Thermal	
Sojitz - Kelanitissa	Auto Diesel
West Coast	Auto Diesel / Heavy Fuel
ACE Matara	Heavy Fuel
ACE Embilipitiya	Heavy Fuel

Major Incidents during the day -as reported by CEB morning of

September 24, 2022

- 1) Rotational manual load shedding was carried out from 15:00hrs to 22:00hrs.
- 2) Randenigala unit 01 made available at 15:20hrs which had been released for A/M from 30.08.2022.