

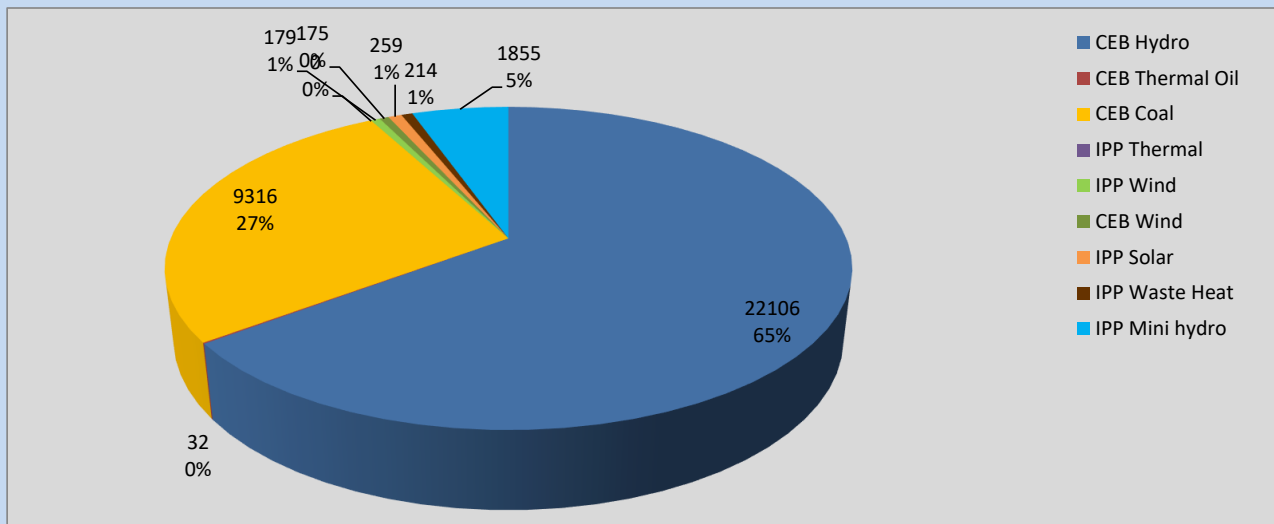
Generation and Reservoirs Statistics

October 22, 2022



PUBLIC UTILITIES COMMISSION OF SRI LANKA

Daily Generation Mix in MWh



Total Generation **34,136 MWh**

Note: Above data is excluding contribution from Roof Top Solar, 1MW Solar and certain Mini Hydro plants

Cumulative Dispatch

Note: Following data is Excluding contribution from Roof Top Solar, 1MW solar and Mini Hydro plants

For Current Month

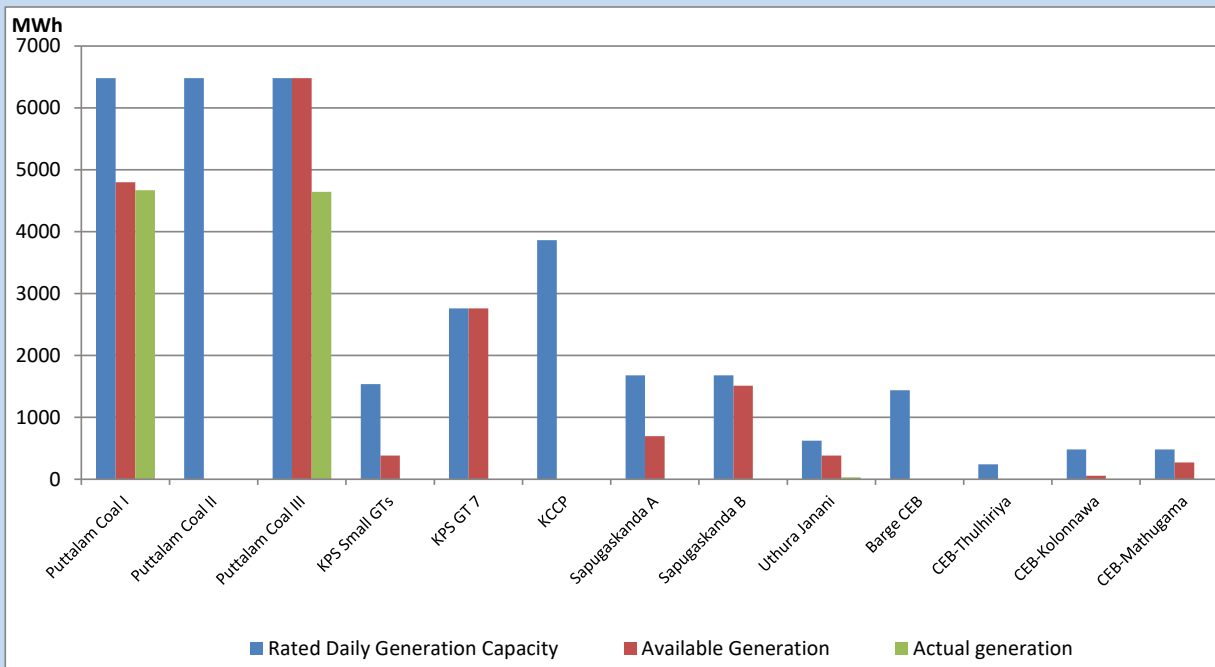
Category	Dispatch (GWh)	Percentage
CEB Hydro	432.94	53.13%
CEB Thermal Oil	38.25	4.69%
CEB Coal	254.24	31.20%
IPP Thermal	7.63	0.94%
SPP Wind	18.81	2.31%
CEB Wind	17.62	2.16%
SPP Solar	5.94	0.73%
SPP Solid Waste	3.69	0.45%
Mini Hydro	35.72	4.38%
Total	814.84	

For Current Year

Category	Dispatch (GWh)	Percentage
CEB Hydro	4,133.1	34.78%
CEB Thermal Oil	1,216.9	10.24%
CEB Coal	4,295.4	36.14%
IPP Thermal	1,083.4	9.12%
SPP Wind	299.8	2.52%
CEB Wind	323.7	2.72%
SPP Solar	77.3	0.65%
SPP Solid Waste	58.6	0.49%
Mini Hydro	396.3	3.33%
Total	11,884.2	

CEB owned Thermal Plant Dispatch

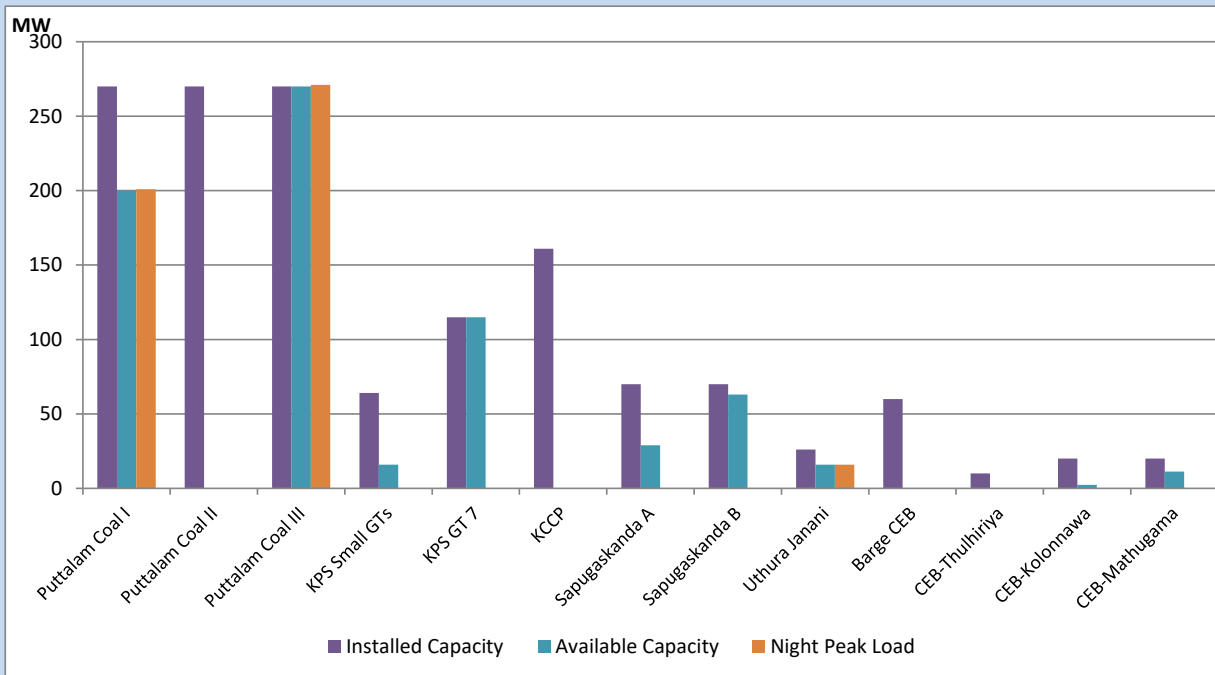
October 22, 2022



Available Generation is estimated based on plant availability at 6.00am on

October 23, 2022

CEB owned Thermal Plant Loading at the Night Peak



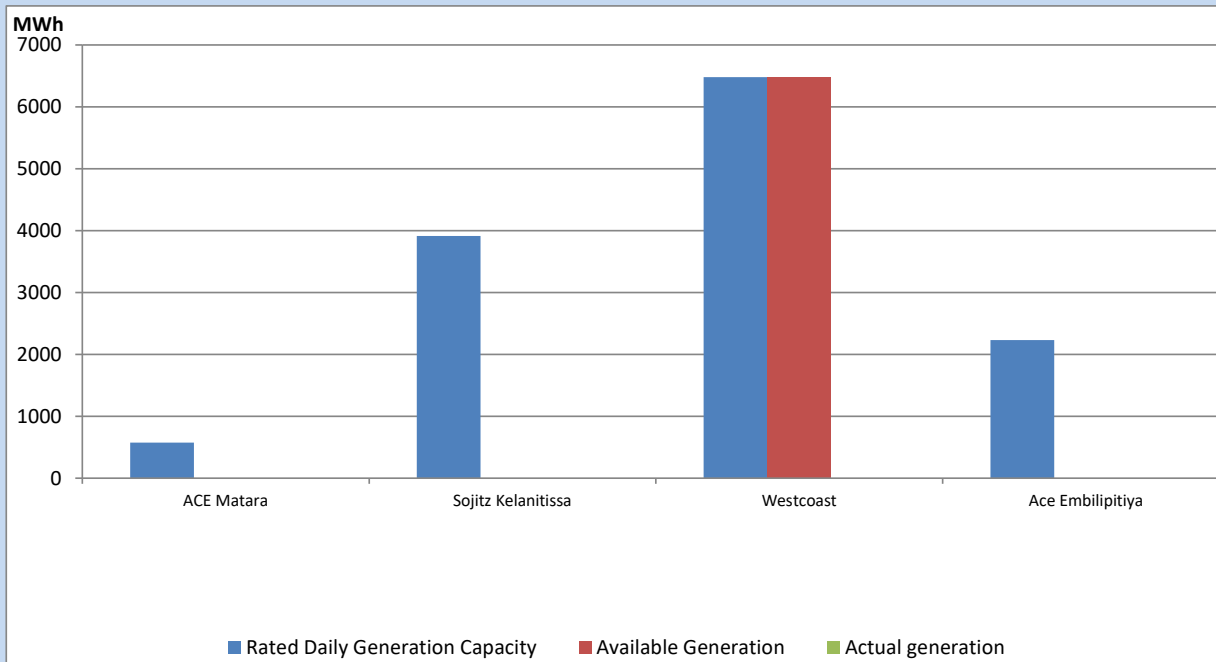
Note- Plant availability is recorded at 6.00 am on

October 23, 2022

IPP owned Thermal Plant Dispatch

October 22, 2022

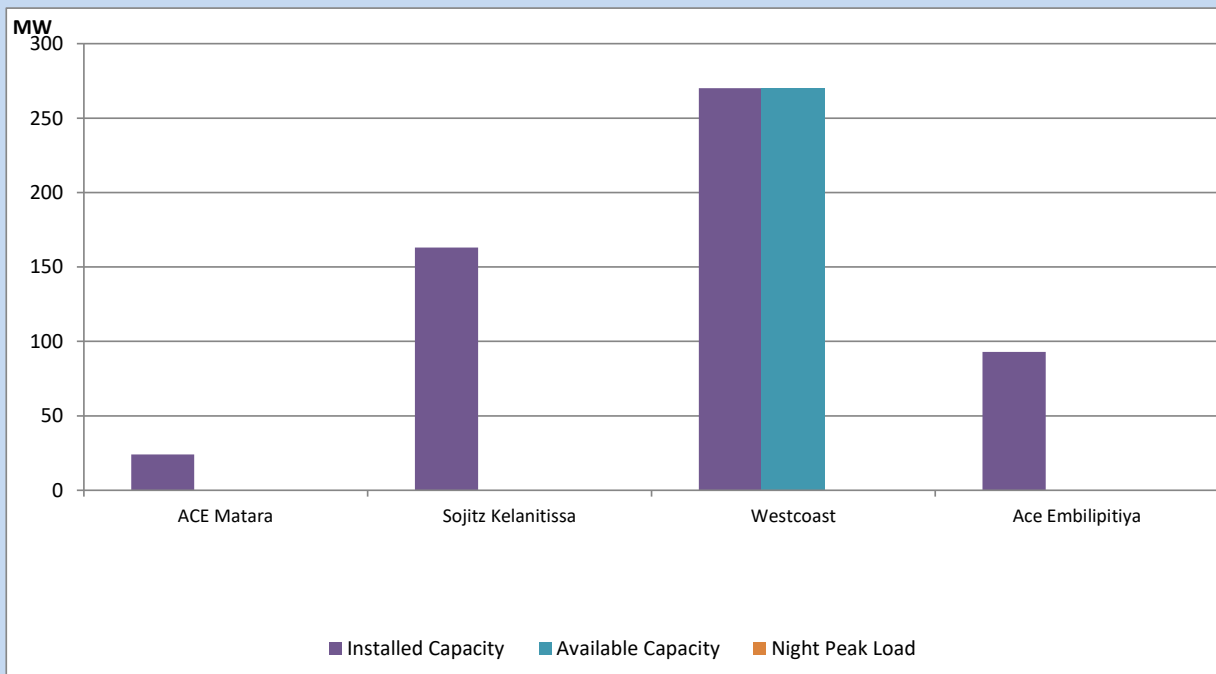
Asia Power, V Power Pallekale, Vpower Galle, V Power Horana, Vpower Hambantota, Vpower Valachchena and Altaqa Mahiyanganaya are not available due to expiration of PPAs



Available Generation is estimated based on plant availability at 6.00am on

October 23, 2022

IPP owned Thermal Plant Loading at the Night Peak

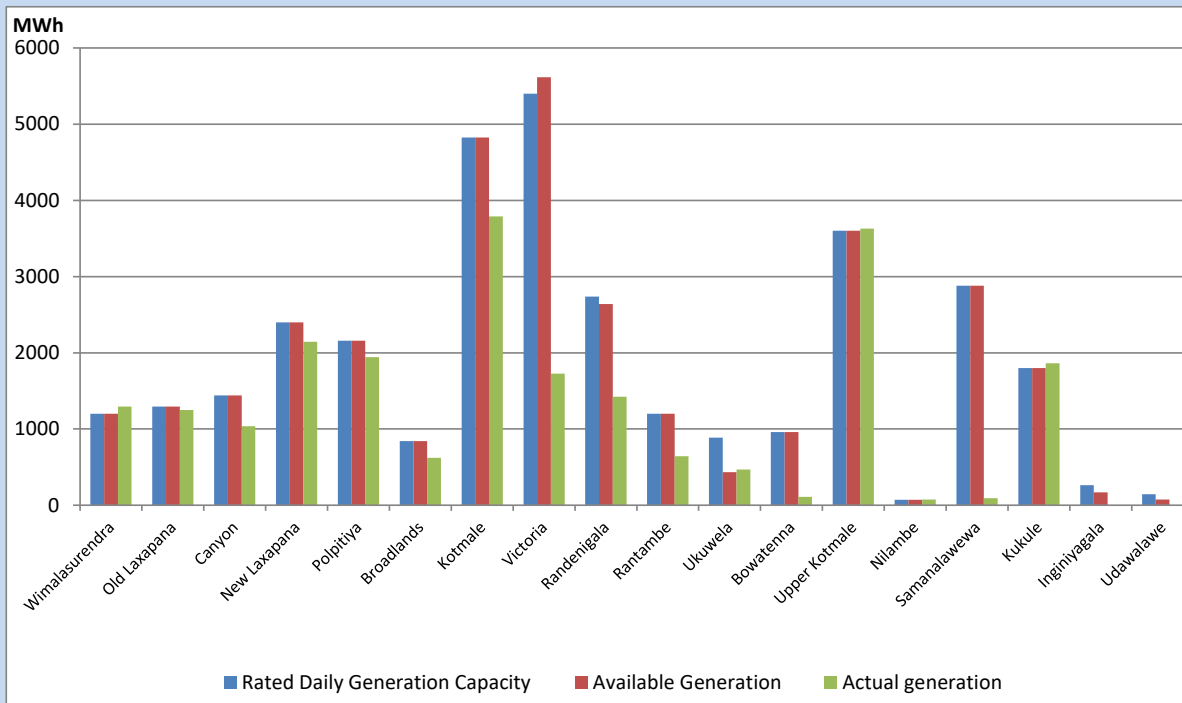


Note- Plant availability is recorded at 6.00 am on

October 23, 2022

Major Hydro Plant Dispatch

October 22, 2022

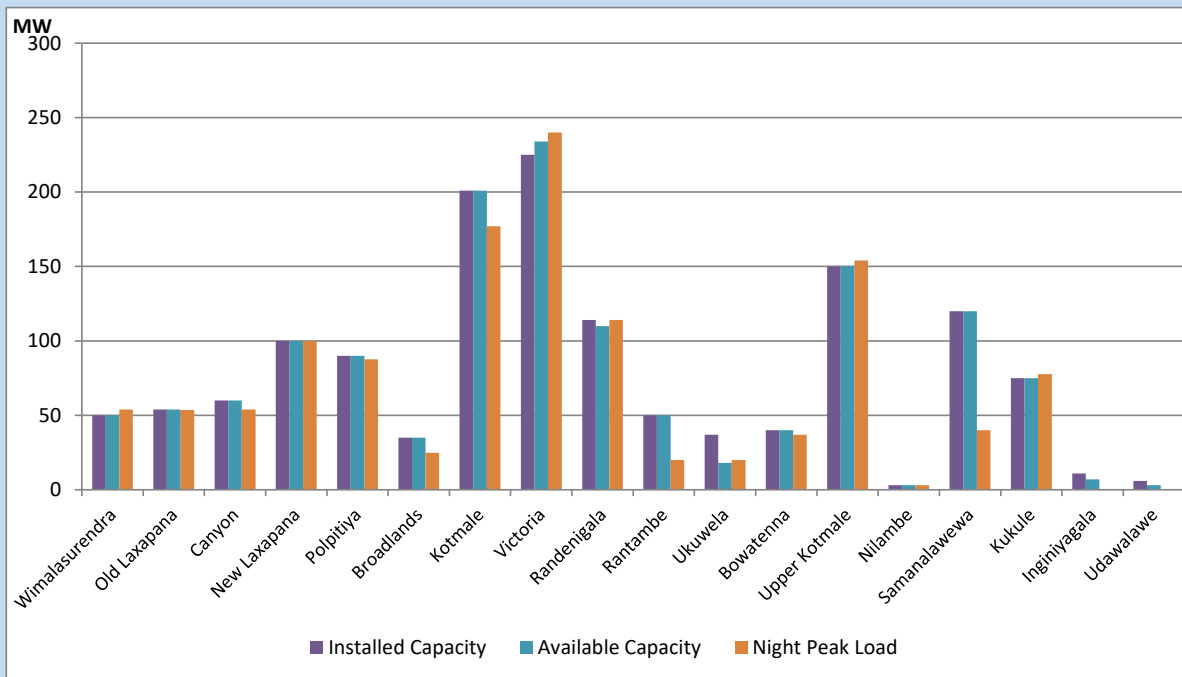


Available Generation is estimated based on plant availability at 6.00am on
Broadlands power plant is operating in the Commissioning Stage

October 23, 2022

Major Hydro Plant Loading at Night Peak

October 22, 2022



Note- Plant availability is recorded at 6.00 am on
Broadlands power plant is operating in the Commissioning Stage

October 23, 2022

Summary of Major Plant performance

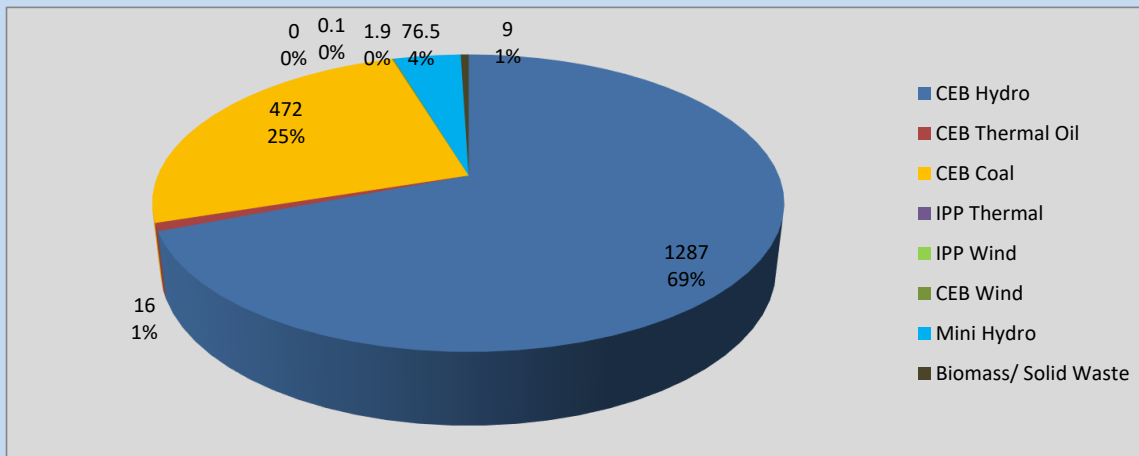
Plant	Installed Capacity	Plant Availability	Night peak Load	Plant Dispatch
	(MW)	(MW)	(MW)	(MWh)
Wimalasurendra	50	50	54	1,296
Old Laxapana	54	54	54	1,248
Canyon	60	60	54	1,035
New Laxapana	100	100	100	2,144
Polpitiya	90	90	88	1,943
Broadlands	35	35	25	620
Kotmale	201	201	177	3,790
Victoria	225	234	240	1,725
Randenigala	114	110	114	1,422
Rantambe	50	50	20	643
Ukuwela	37	18	20	469
Bowatenna	40	40	37	110
Upper Kotmale	150	150	154	3,631
Nilambe	3	3	3	76
Samanalawewa	120	120	40	92
Kukule	75	75	78	1,862
Inginiyagala	11	7	0	0
Udawalawe	6	3	0	0
Puttalam Coal I	270	200	201	4,670
Puttalam Coal II	270	0	0	0
Puttalam Coal III	270	270	271	4,646
KPS Small GTs	64	16	0	0
KPS GT 7	115	115	0	0
KCCP	161	0	0	0
Sapugaskanda A	70	29	0	0
Sapugaskanda B	70	63	0	0
Uthura Janani	26	16	16	32
Barge CEB	60	0	0	0
CEB-Thulhiriya	10	0	0	0
CEB-Kolonnawa	20	2	0	0
CEB-Mathugama	20	11	0	0
ACE Matara	24	0	0	0
Sojitz Kelanitissa	163	0	0	0
West Coast	270	270	0	0
ACE Embilipitiya	93	0	0	0
Total	3,397	2,393	1,832	34,136

Plant availability is the availability recorded at 6 am on

October 23, 2022

Contribution to the Night Peak in MW

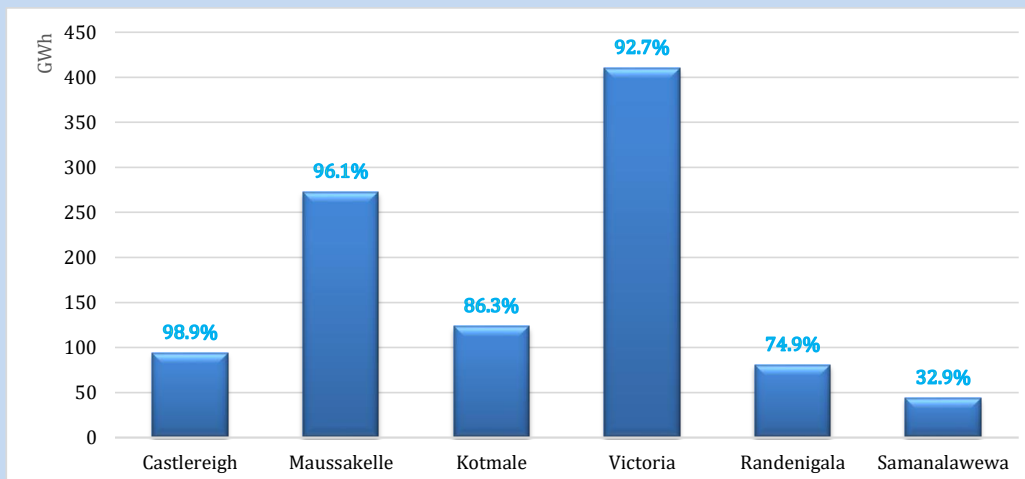
October 22, 2022



Night Peak*	1,862.1 MW
Day Peak	1,589.5 MW
Minimum Demand	1,021.4 MW

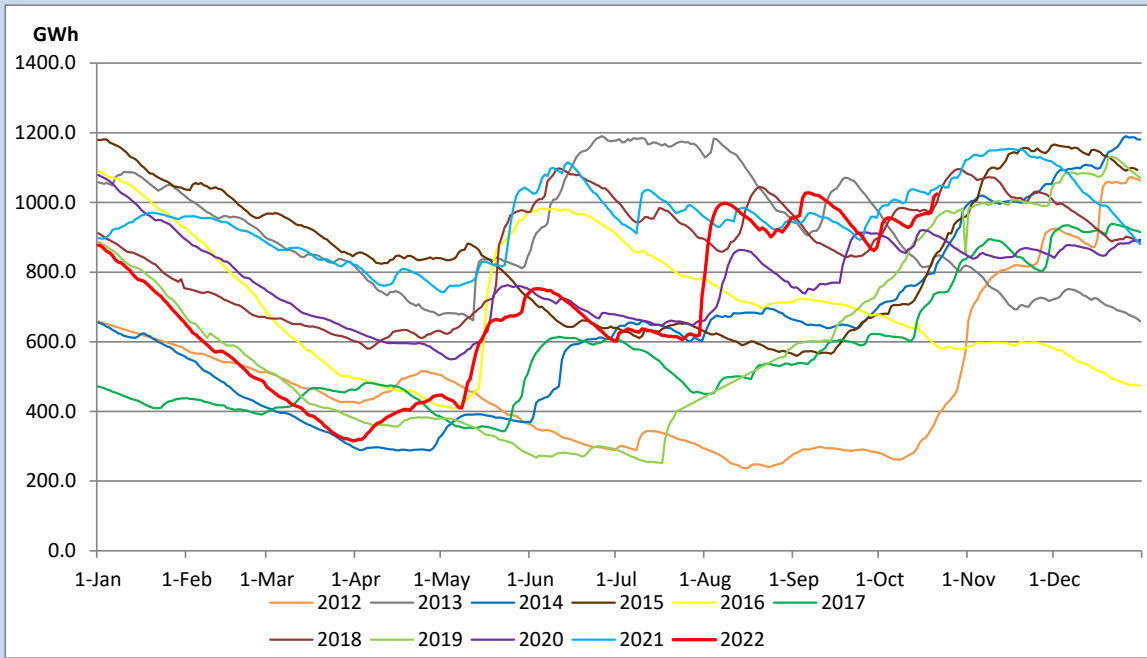
Above figures are excluding contribution from Roof Top Solar, 1MW solar, certain Wind plants and Mini Hydro plants

Reservoir Levels - as at 06.00 Hr on October 23, 2022

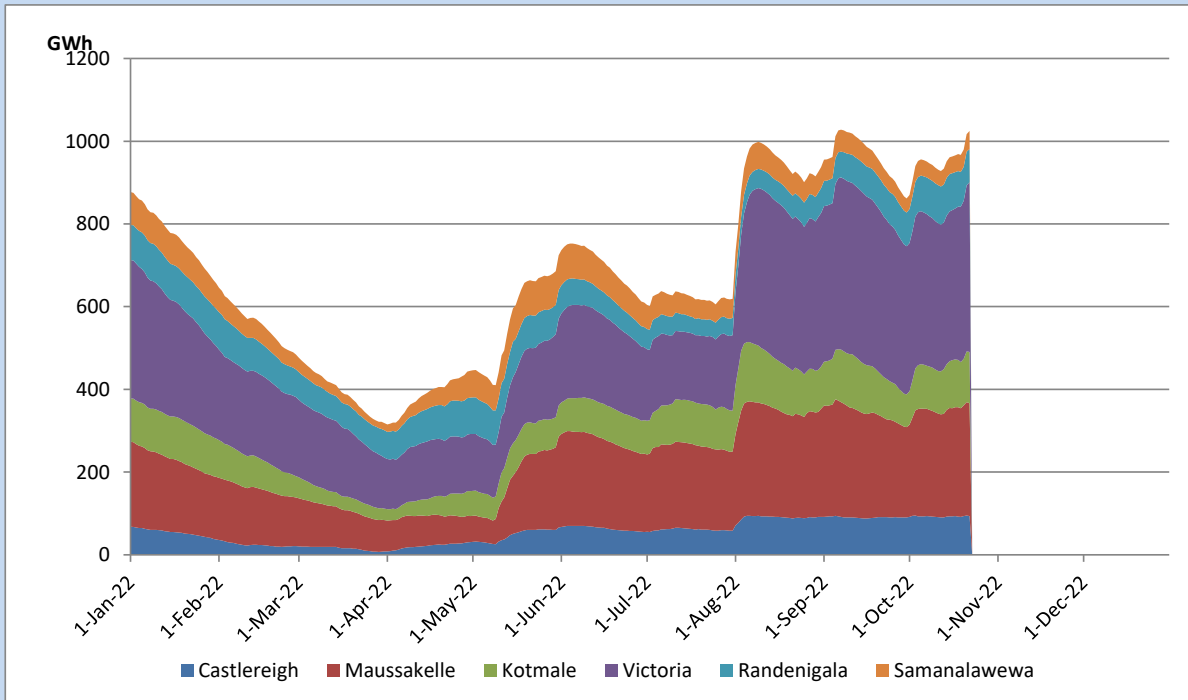


Total Reservoir Level	1024.9 GWh
% of Total capacity	85.0%

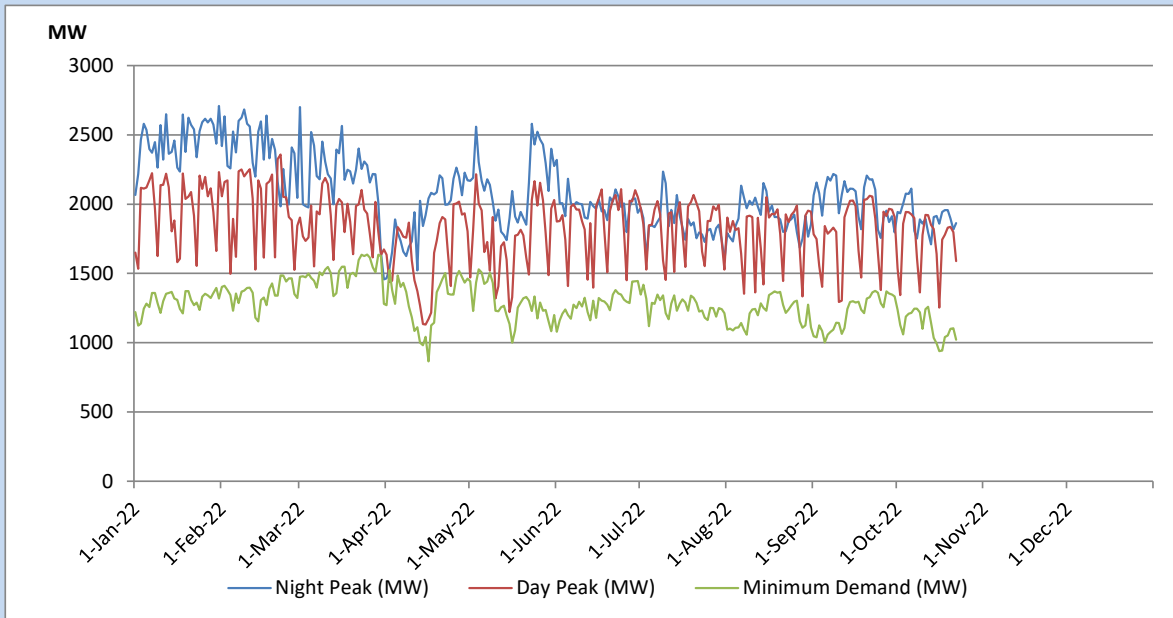
Comparison of Total Reservoir Storage Levels with Past Years



Variation of Major Hydro Reservoir Levels in the current year (GWh)



Variation of Demand during the current year

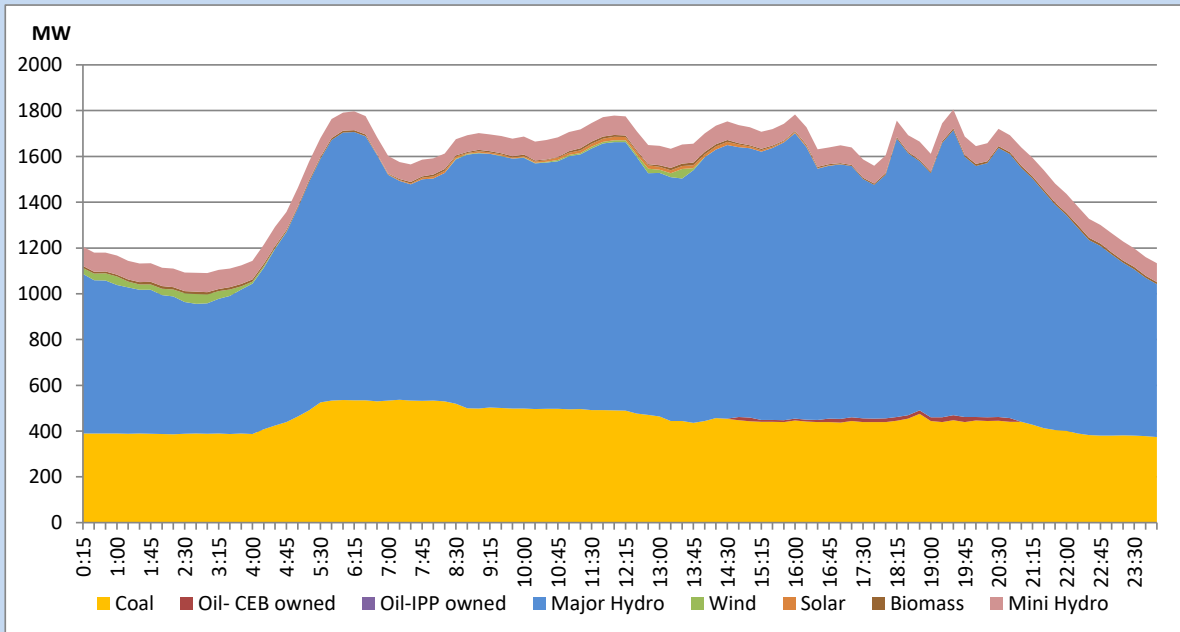


The above figures are excluding contribution from Roof Top Solar, 1MW solar, certain Wind plants and Mini Hydro plants

Daily Load Curve of the Previous day

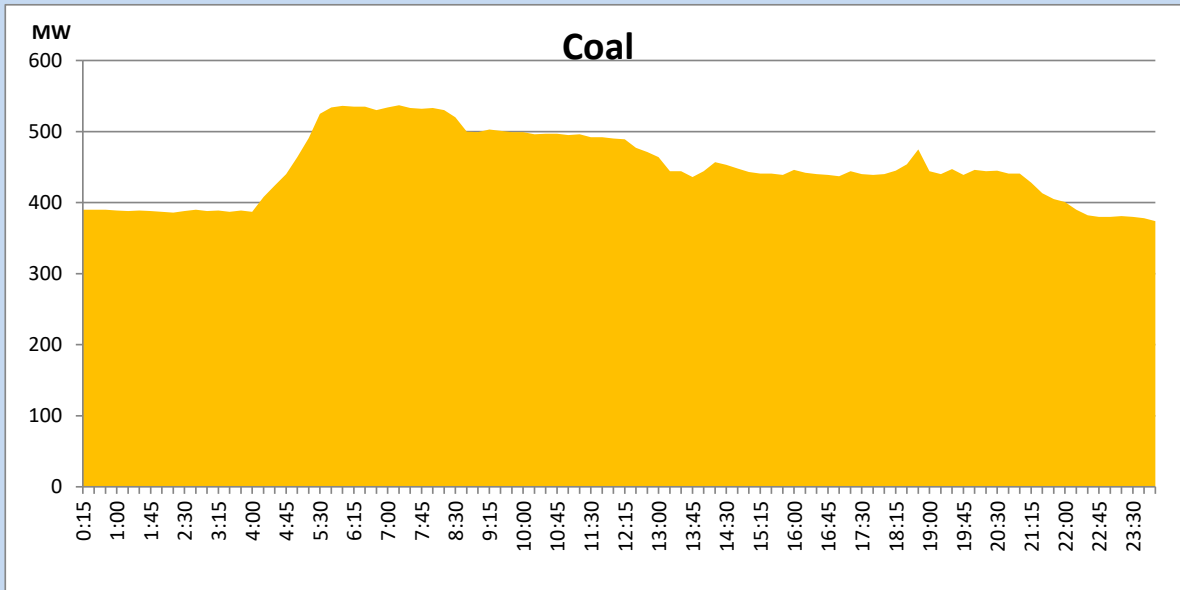
October 21, 2022

Solar and wind data is based on Telemetered Power Stations only



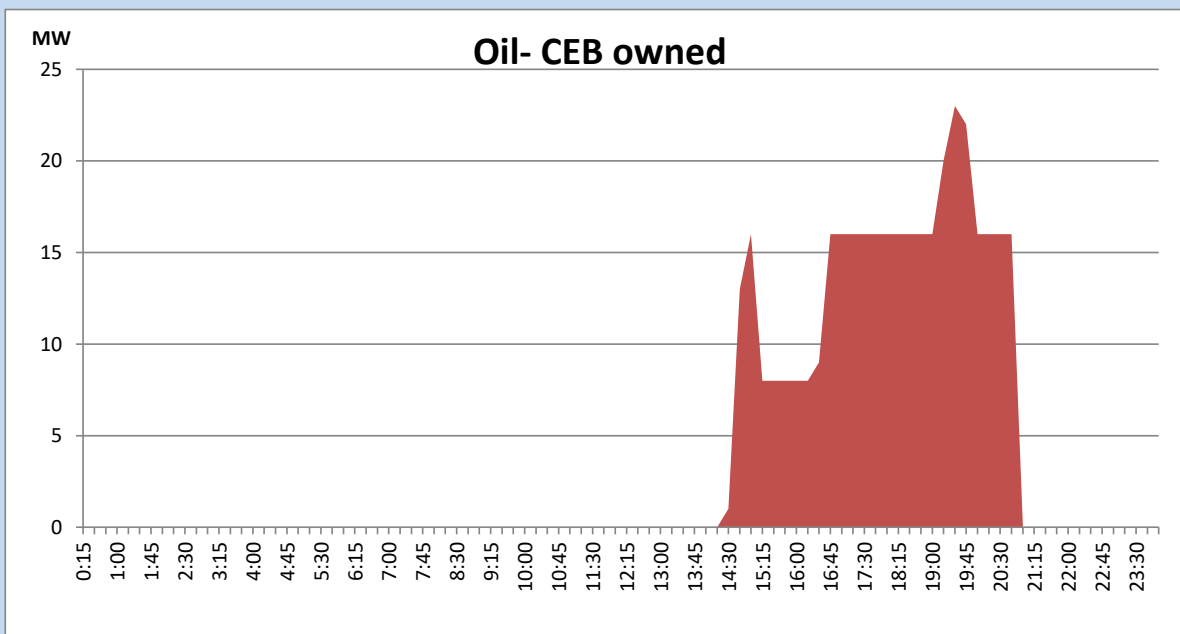
Coal Generation during the Previous day

October 21, 2022



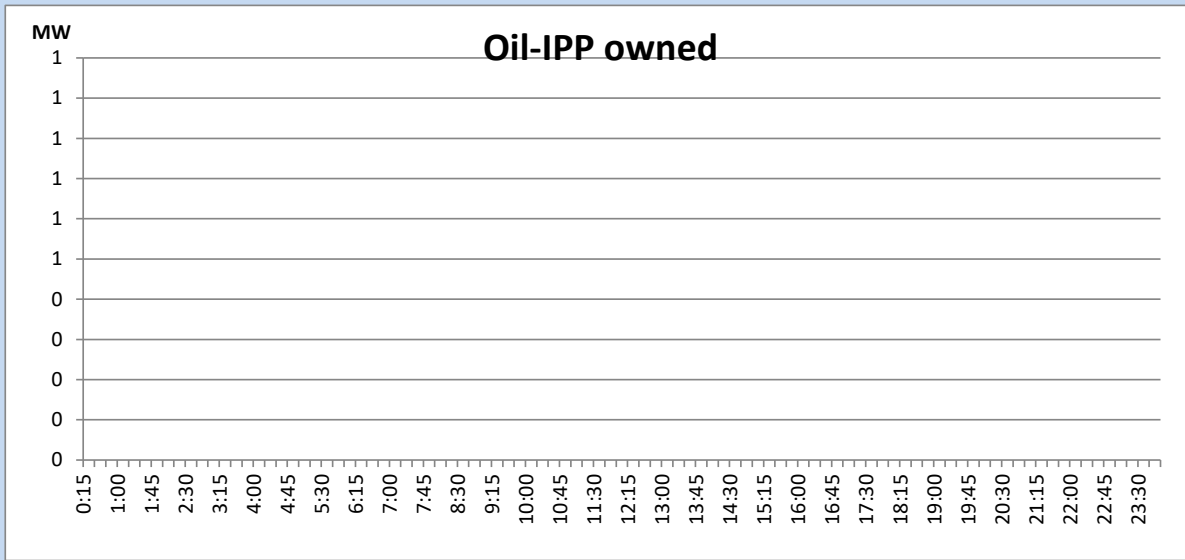
CEB Oil Plant Generation during the Previous day

October 21, 2022



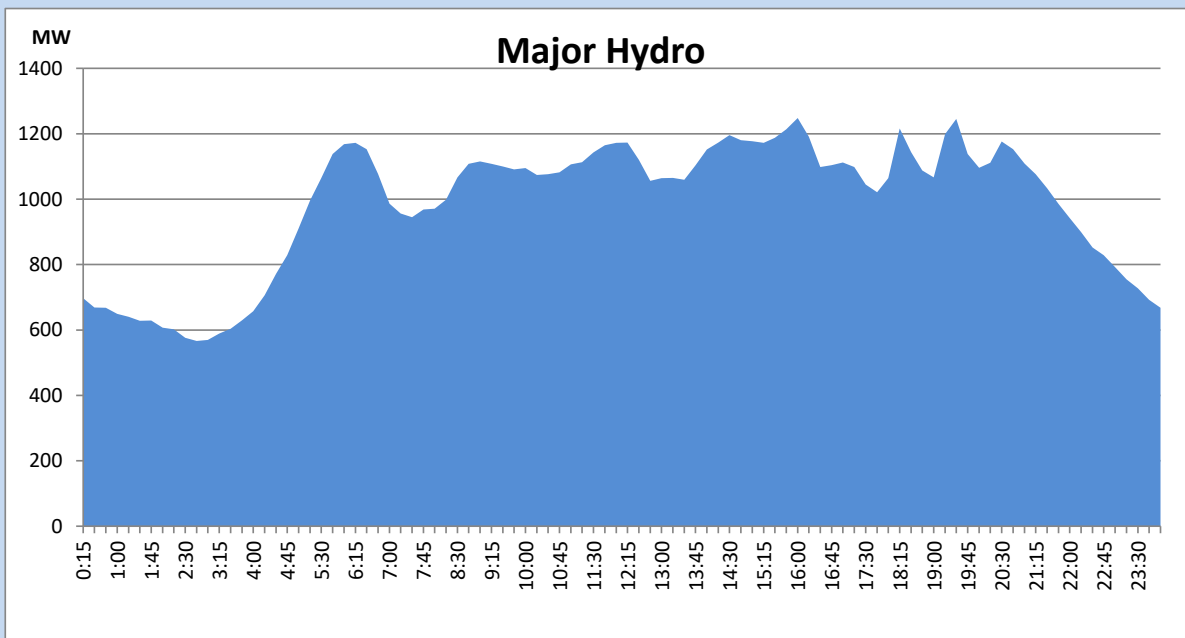
IPP Oil Plant Generation during the Previous day

October 21, 2022



Major Hydro Generation during the Previous day

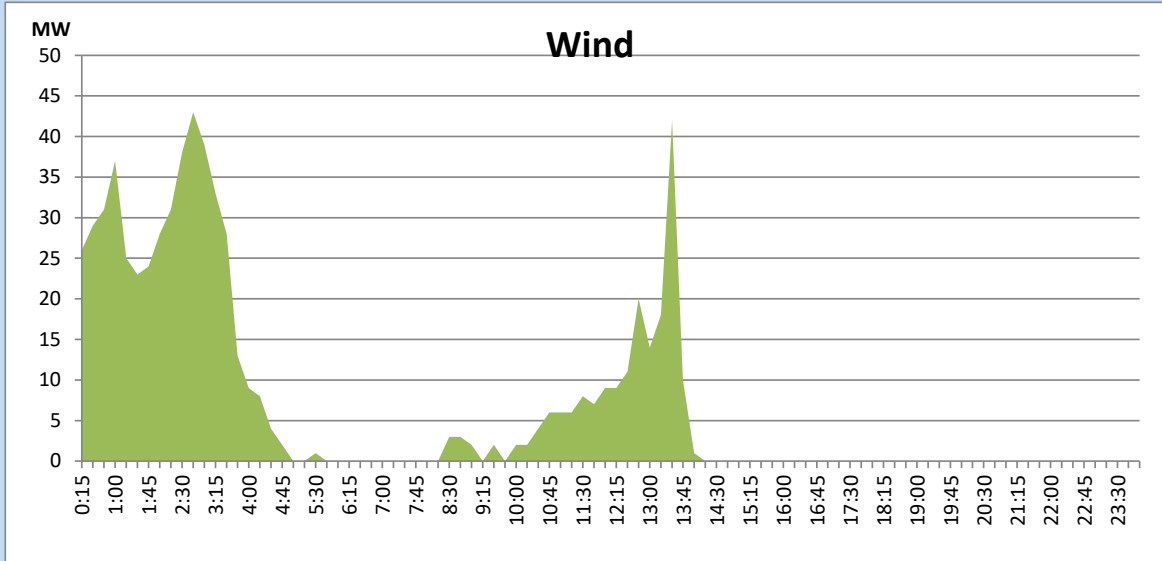
October 21, 2022



Wind Generation during the Previous day

October 21, 2022

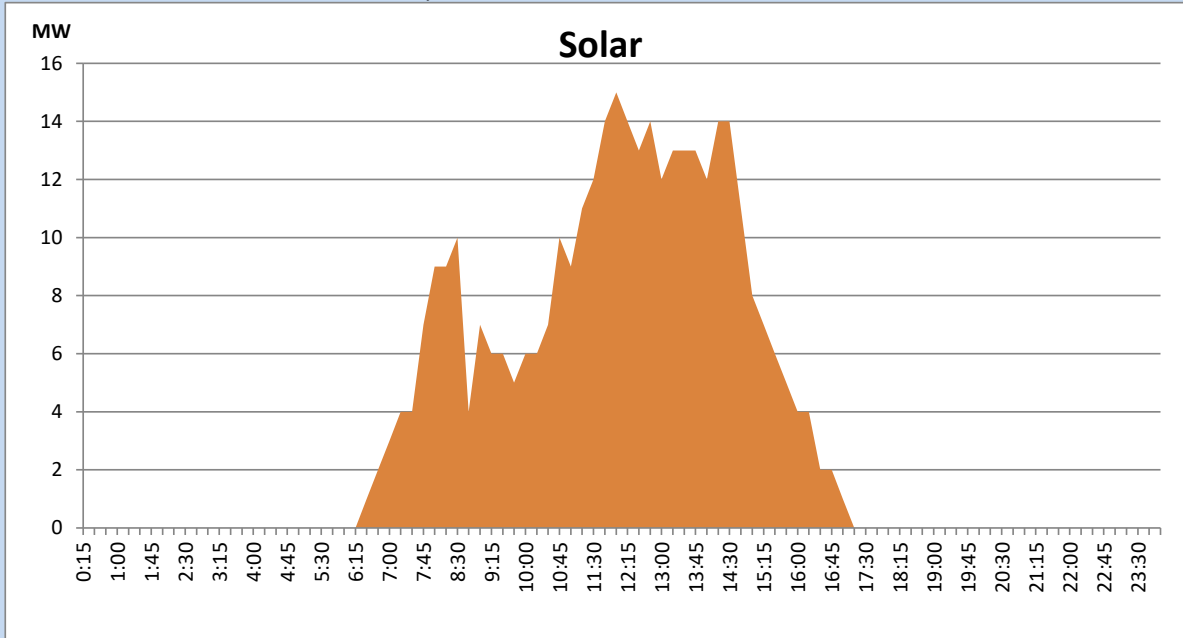
Based on Telemetered Power Stations only



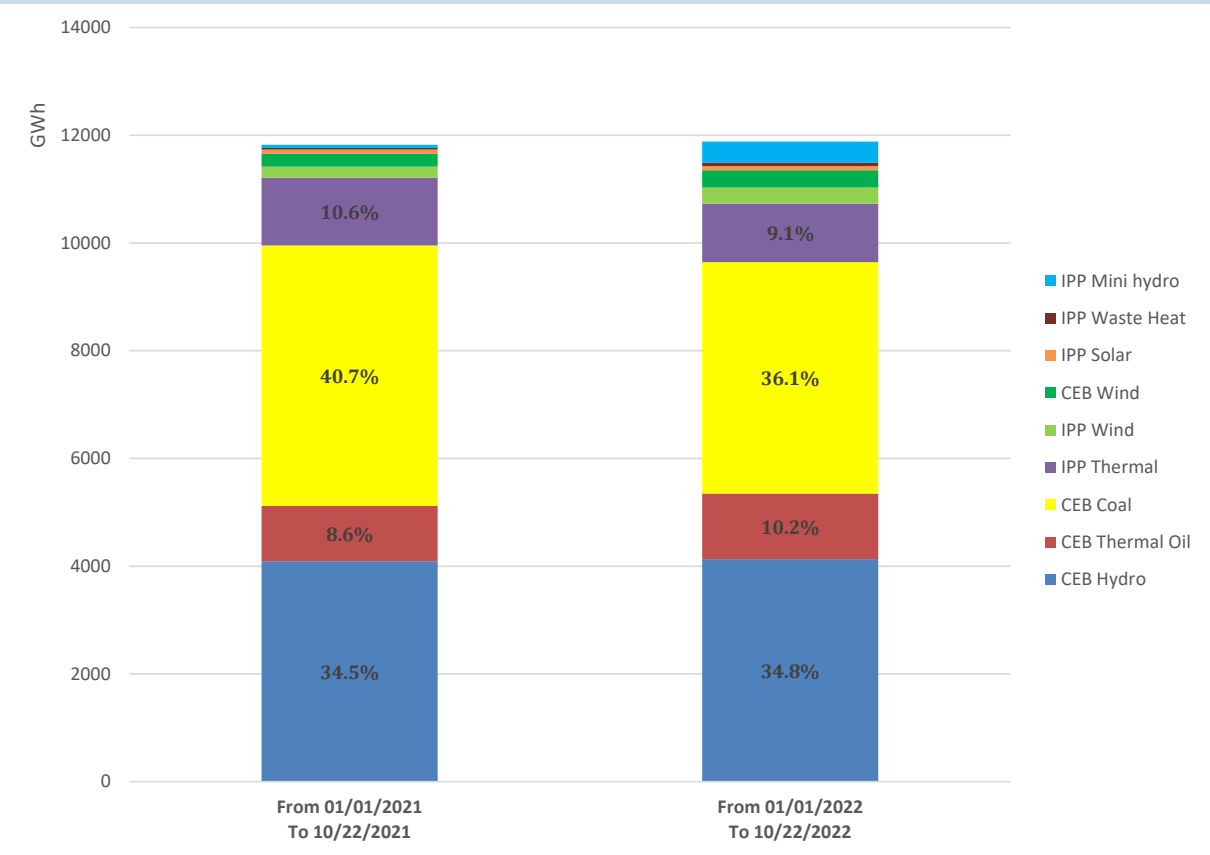
Solar Generation during the Previous day

October 21, 2022

Based on Telemetered Power Stations only



Cumulative Dispatch Comparison with Last Year



Thermal Plant Fuel types

Power Station	Primary Fuel
CEB Thermal	
Sapugaskanda 1	Heavy Fuel
Sapugaskanda 2	Heavy Fuel
Kelanitissa Small Gas Turbines	Auto Diesel
GT 7 - Kelanitissa	Auto Diesel
Kelanitissa CCY	Naphtha or Diesel
Lakvijaya 1	Coal
Lakvijaya 2	Coal
Lakvijaya 3	Coal
Uthuru Janani	Heavy Fuel
Barge CEB	Heavy Fuel

Power Station	Primary Fuel
Private Thermal	
Sojitz - Kelanitissa	Auto Diesel
West Coast	Auto Diesel / Heavy Fuel
ACE Matara	Heavy Fuel
ACE Embilipitiya	Heavy Fuel

Major Incidents during the day -as reported by CEB morning of

October 23, 2022

- 1) Manual load shedding carried out from 17:00hrs to 19:40hrs.
- 2) Castlereigh reservoir spilling stopped at 07:30hrs. Laxapana and Norton pond spilling continues to the present hour. Canyon pond started spilling at 07:16hrs and stopped at 05:12hrs(23/10/2022).
- 3) Kukule pond spilling continues to the present hour. Upper Kotmale spilling stopped at 6:07hrs(23/10/2022).
- 4) Kilinochchi 132 / 33kV T/F 03 tripped from 33kV side at 7:41hrs due to the operation of over current protection. T/F 03 restored at 8:11hrs.
- 5) Sub C 132/11kV T/F 02 tripped from 11kV side at 16: 09hrs due to the operation of over current protection . T/F 02 restored at 16:55hrs.