

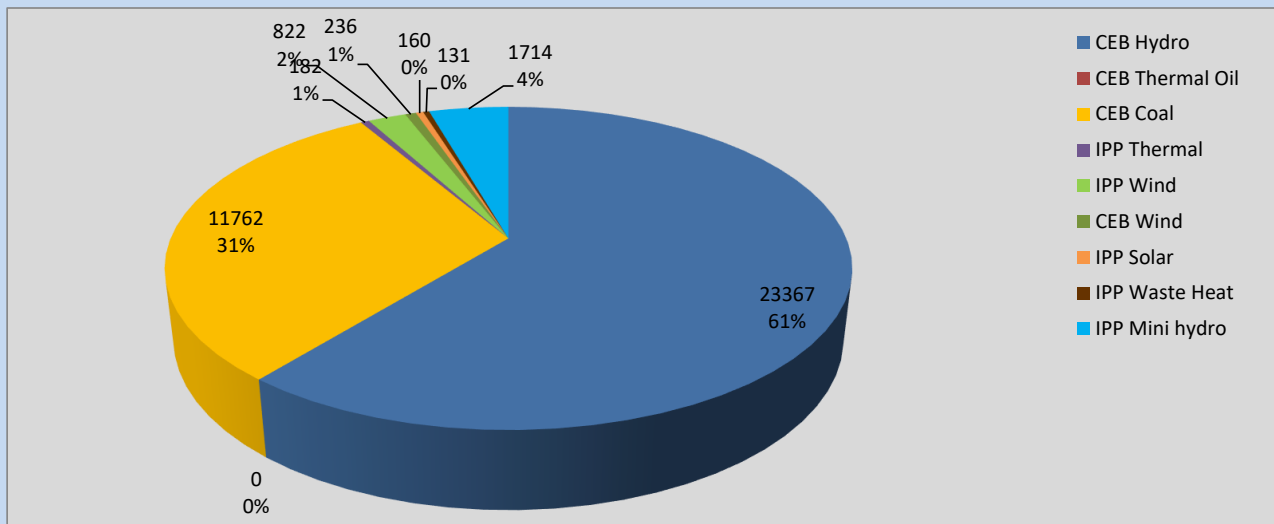
Generation and Reservoirs Statistics

October 20, 2022



PUBLIC UTILITIES COMMISSION OF SRI LANKA

Daily Generation Mix in MWh



Total Generation 38,374 MWh

Note: Above data is excluding contribution from Roof Top Solar, 1MW Solar and certain Mini Hydro plants

Cumulative Dispatch

Note: Following data is Excluding contribution from Roof Top Solar, 1MW solar and Mini Hydro plants

For Current Month

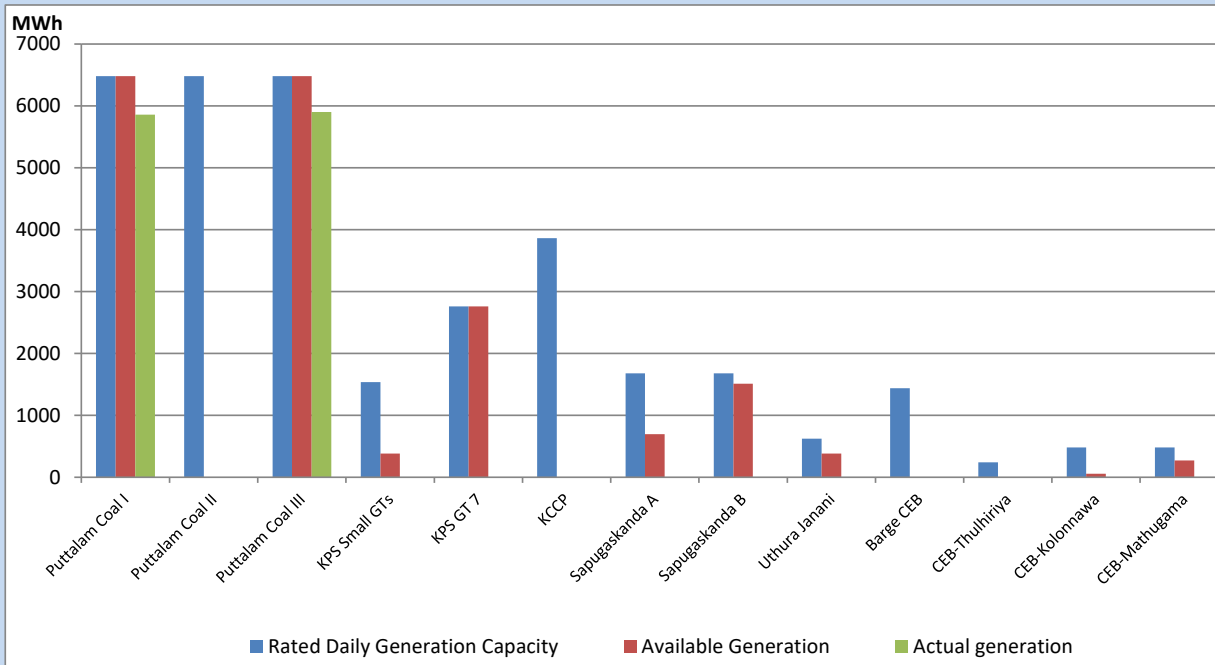
Category	Dispatch (GWh)	Percentage
CEB Hydro	386.88	52.03%
CEB Thermal Oil	38.13	5.13%
CEB Coal	234.12	31.49%
IPP Thermal	7.63	1.03%
SPP Wind	18.49	2.49%
CEB Wind	17.38	2.34%
SPP Solar	5.57	0.75%
SPP Solid Waste	3.30	0.44%
Mini Hydro	32.02	4.31%
Total	743.52	

For Current Year

Category	Dispatch (GWh)	Percentage
CEB Hydro	4,087.1	34.60%
CEB Thermal Oil	1,216.8	10.30%
CEB Coal	4,275.3	36.19%
IPP Thermal	1,083.4	9.17%
SPP Wind	299.5	2.54%
CEB Wind	323.4	2.74%
SPP Solar	77.0	0.65%
SPP Solid Waste	58.2	0.49%
Mini Hydro	392.6	3.32%
Total	11,812.8	

CEB owned Thermal Plant Dispatch

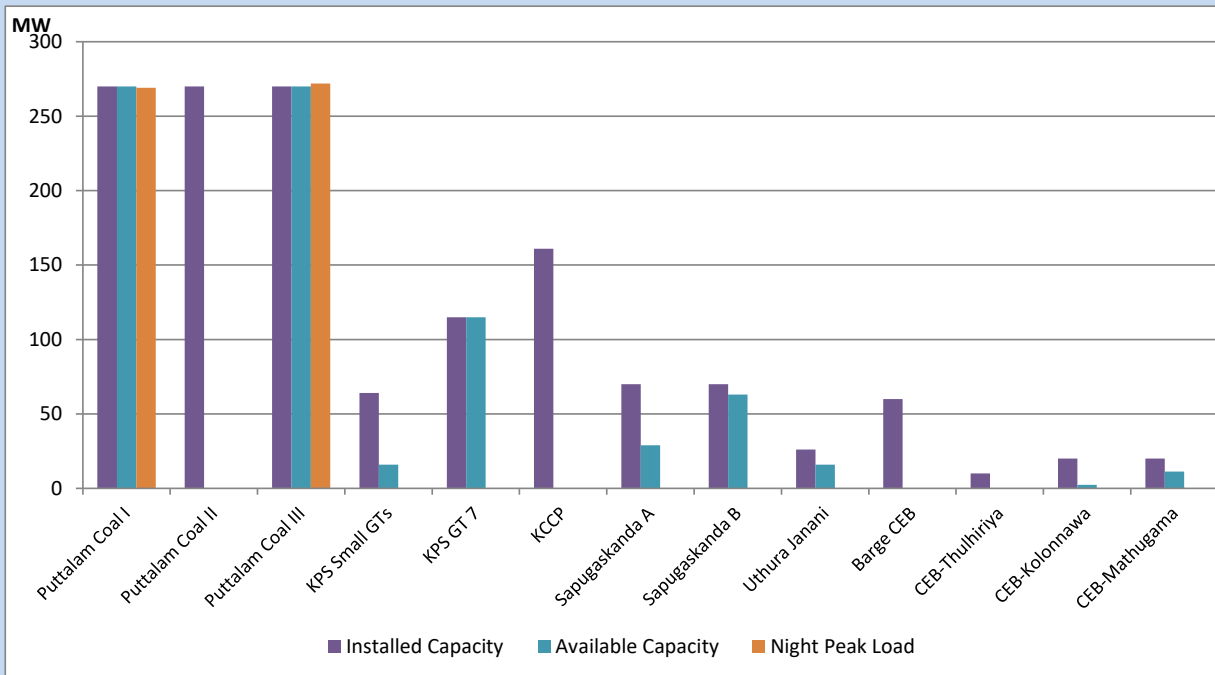
October 20, 2022



Available Generation is estimated based on plant availability at 6.00am on

October 21, 2022

CEB owned Thermal Plant Loading at the Night Peak



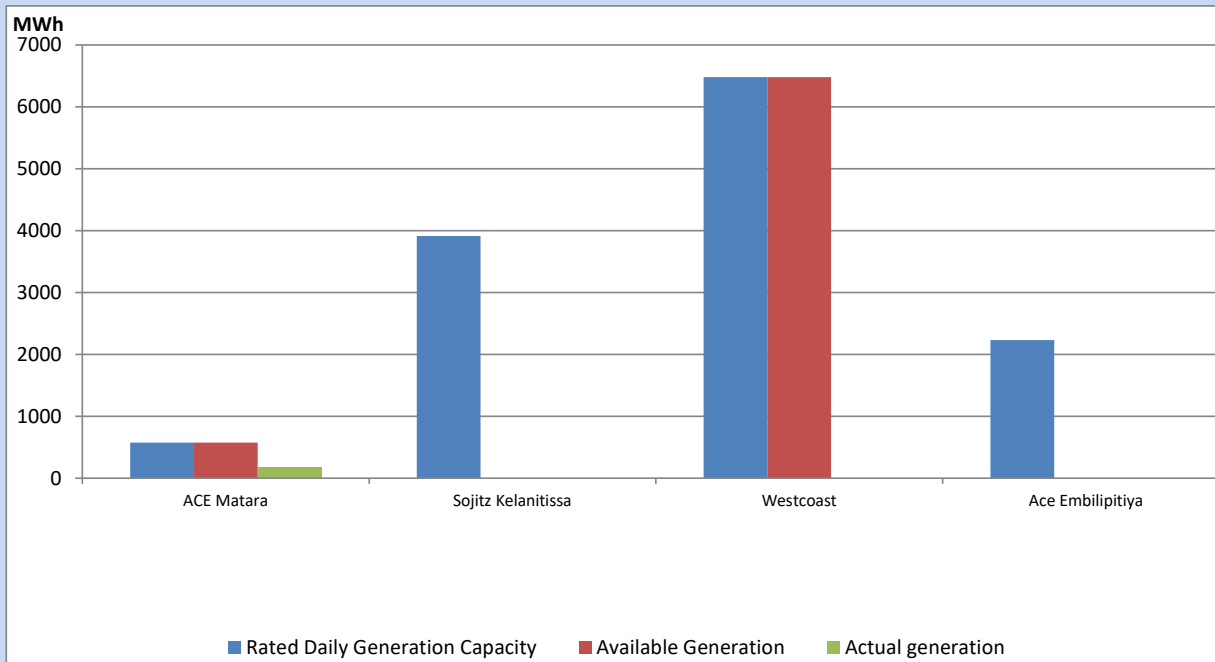
Note- Plant availability is recorded at 6.00 am on

October 21, 2022

IPP owned Thermal Plant Dispatch

October 20, 2022

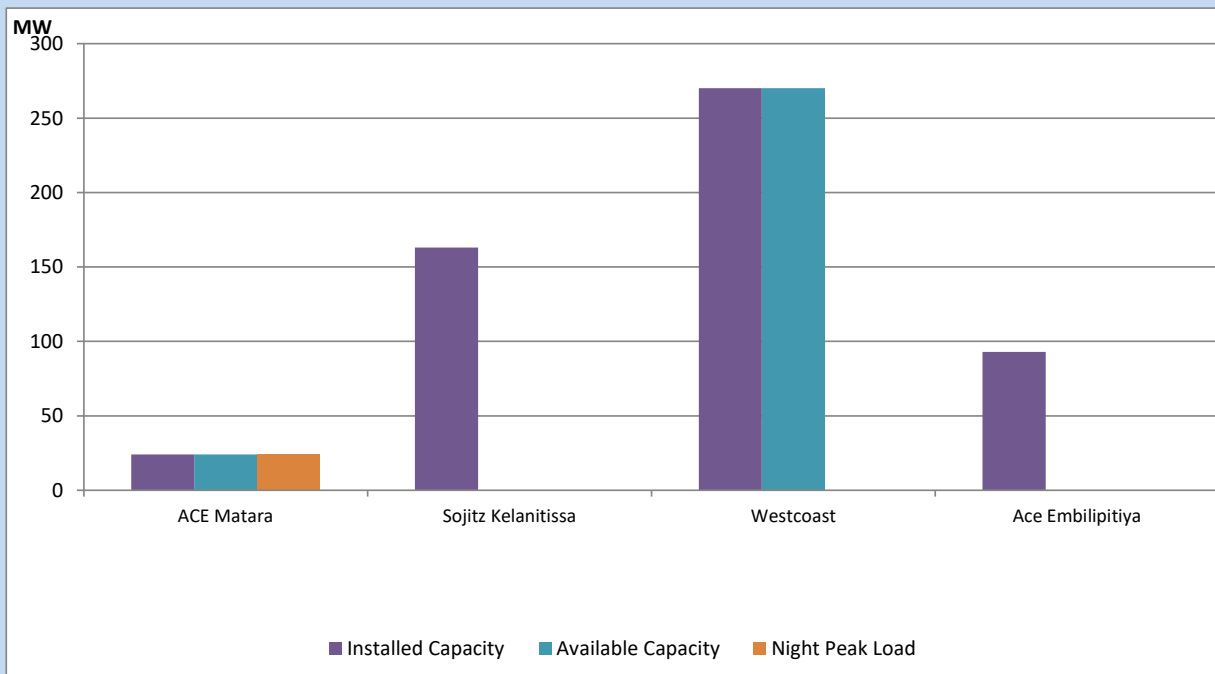
Asia Power, V Power Pallekale, Vpower Galle, V Power Horana, Vpower Hambantota, Vpower Valachchena and Altaqa Mahiyanganaya are not available due to expiration of PPAs



Available Generation is estimated based on plant availability at 6.00am on

October 21, 2022

IPP owned Thermal Plant Loading at the Night Peak

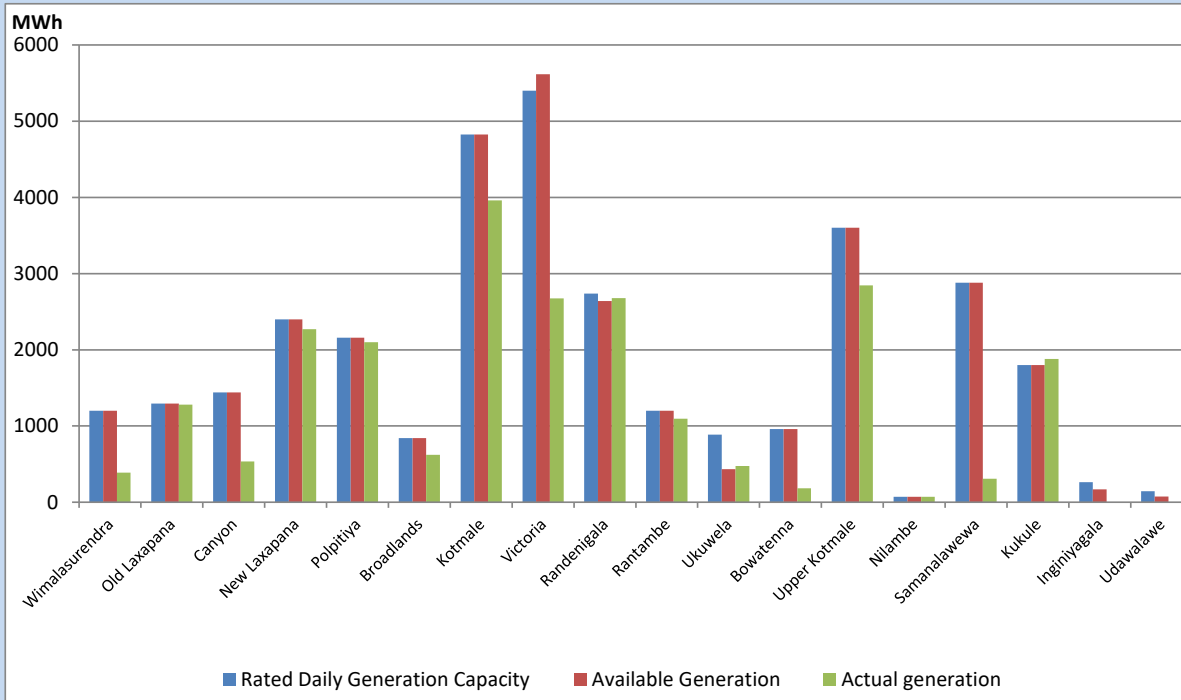


Note- Plant availability is recorded at 6.00 am on

October 21, 2022

Major Hydro Plant Dispatch

October 20, 2022

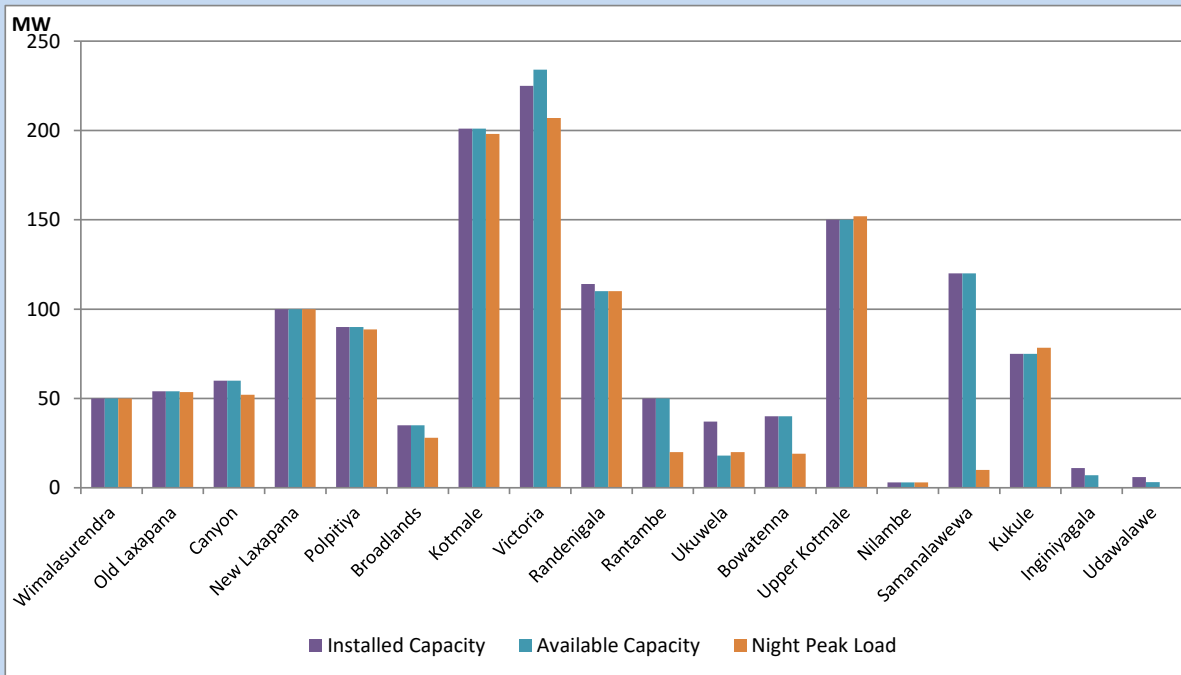


Available Generation is estimated based on plant availability at 6.00am on
Broadlands power plant is operating in the Commissioning Stage

October 21, 2022

Major Hydro Plant Loading at Night Peak

October 20, 2022



Note- Plant availability is recorded at 6.00 am on
Broadlands power plant is operating in the Commissioning Stage

October 21, 2022

Summary of Major Plant performance

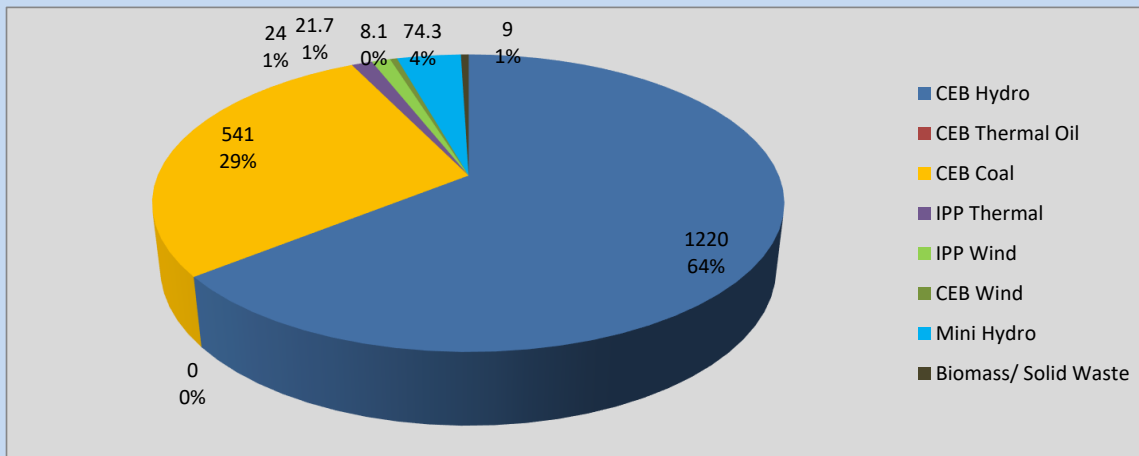
Plant	Installed Capacity	Plant Availability	Night peak Load	Plant Dispatch
	(MW)	(MW)	(MW)	(MWh)
Wimalasurendra	50	50	50	389
Old Laxapana	54	54	54	1,281
Canyon	60	60	52	536
New Laxapana	100	100	100	2,270
Polpitiya	90	90	89	2,099
Broadlands	35	35	28	621
Kotmale	201	201	198	3,960
Victoria	225	234	207	2,674
Randenigala	114	110	110	2,679
Rantambe	50	50	20	1,097
Ukuwela	37	18	20	474
Bowatenna	40	40	19	182
Upper Kotmale	150	150	152	2,846
Nilambe	3	3	3	70
Samanalawewa	120	120	10	309
Kukule	75	75	78	1,880
Inginiyagala	11	7	0	0
Udawalawe	6	3	0	0
Puttalam Coal I	270	270	269	5,858
Puttalam Coal II	270	0	0	0
Puttalam Coal III	270	270	272	5,904
KPS Small GTs	64	16	0	0
KPS GT 7	115	115	0	0
KCCP	161	0	0	0
Sapugaskanda A	70	29	0	0
Sapugaskanda B	70	63	0	0
Uthura Janani	26	16	0	0
Barge CEB	60	0	0	0
CEB-Thulhiriya	10	0	0	0
CEB-Kolonnawa	20	2	0	0
CEB-Mathugama	20	11	0	0
ACE Matara	24	24	24	182
Sojitz Kelanitissa	163	0	0	0
West Coast	270	270	0	0
ACE Embilipitiya	93	0	0	0
Total	3,397	2,487	1,868	38,374

Plant availability is the availability recorded at 6 am on

October 21, 2022

Contribution to the Night Peak in MW

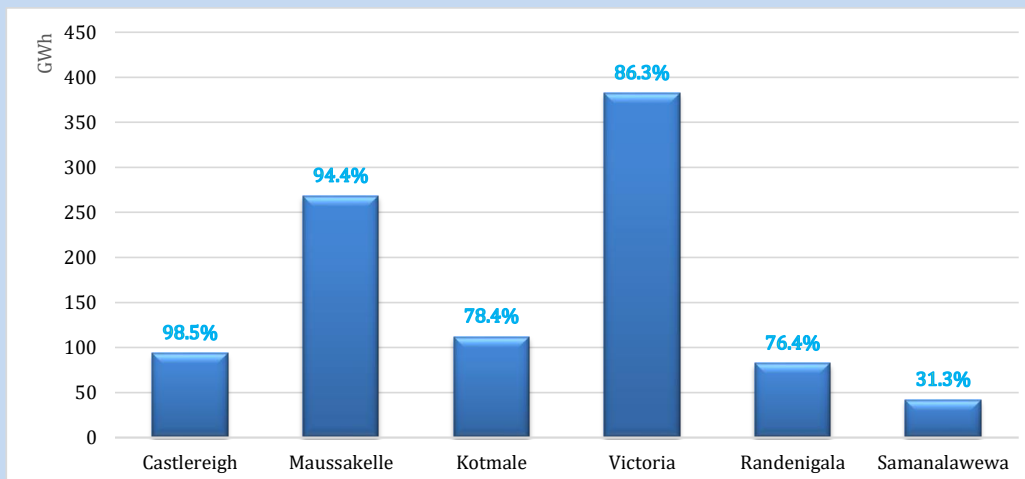
October 20, 2022



Night Peak*	1,897.8 MW
Day Peak	1,836.6 MW
Minimum Demand	1,100.4 MW

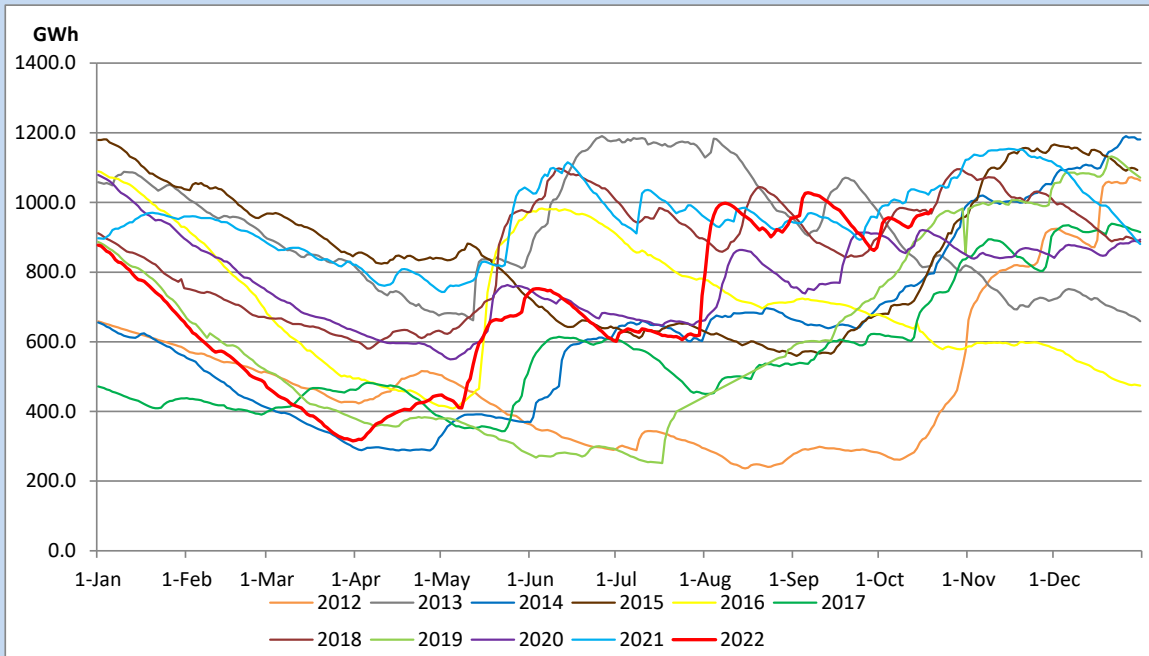
Above figures are excluding contribution from Roof Top Solar, 1MW solar, certain Wind plants and Mini Hydro plants

Reservoir Levels - as at 06.00 Hr on October 21, 2022

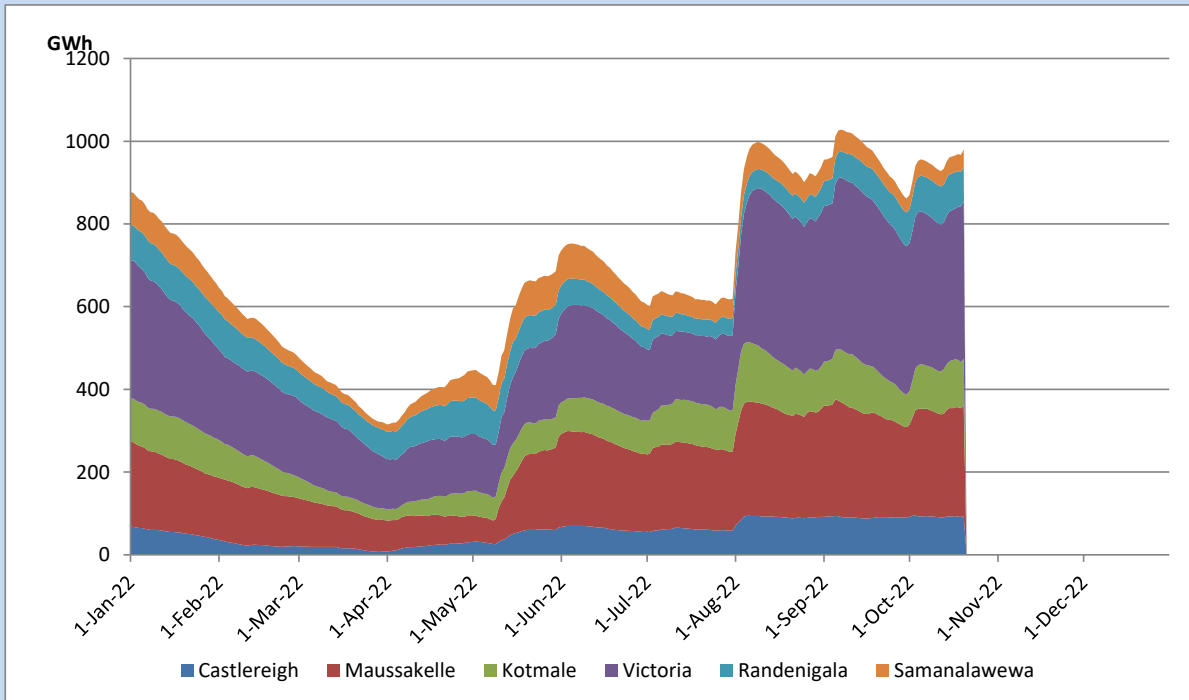


Total Reservoir Level	979.8 GWh
% of Total capacity	81.3%

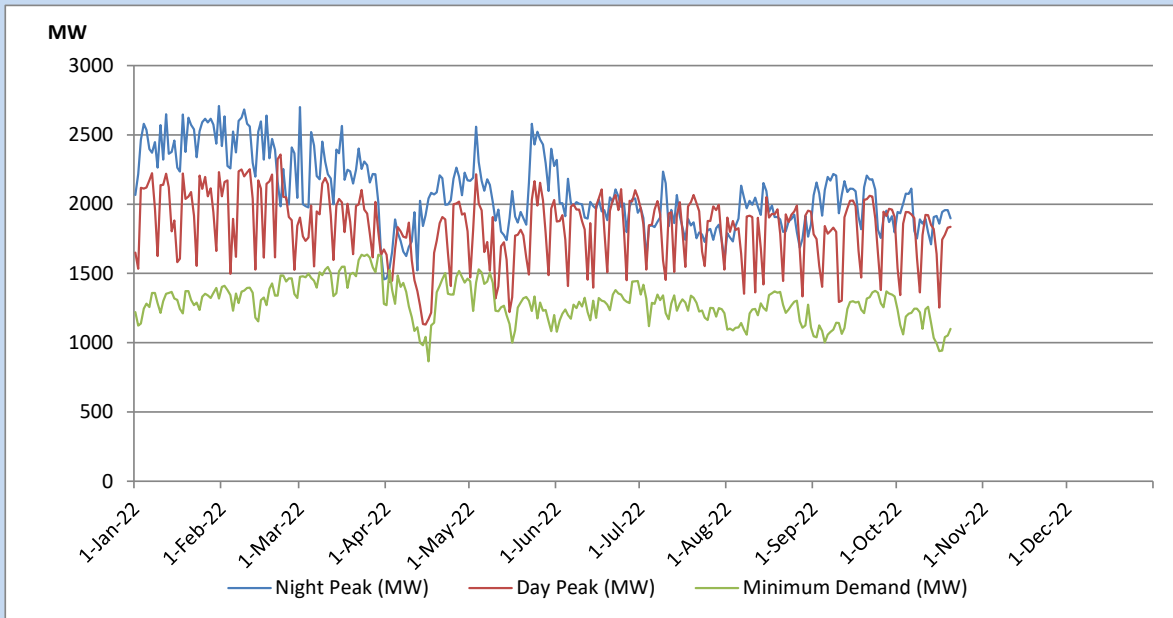
Comparison of Total Reservoir Storage Levels with Past Years



Variation of Major Hydro Reservoir Levels in the current year (GWh)



Variation of Demand during the current year

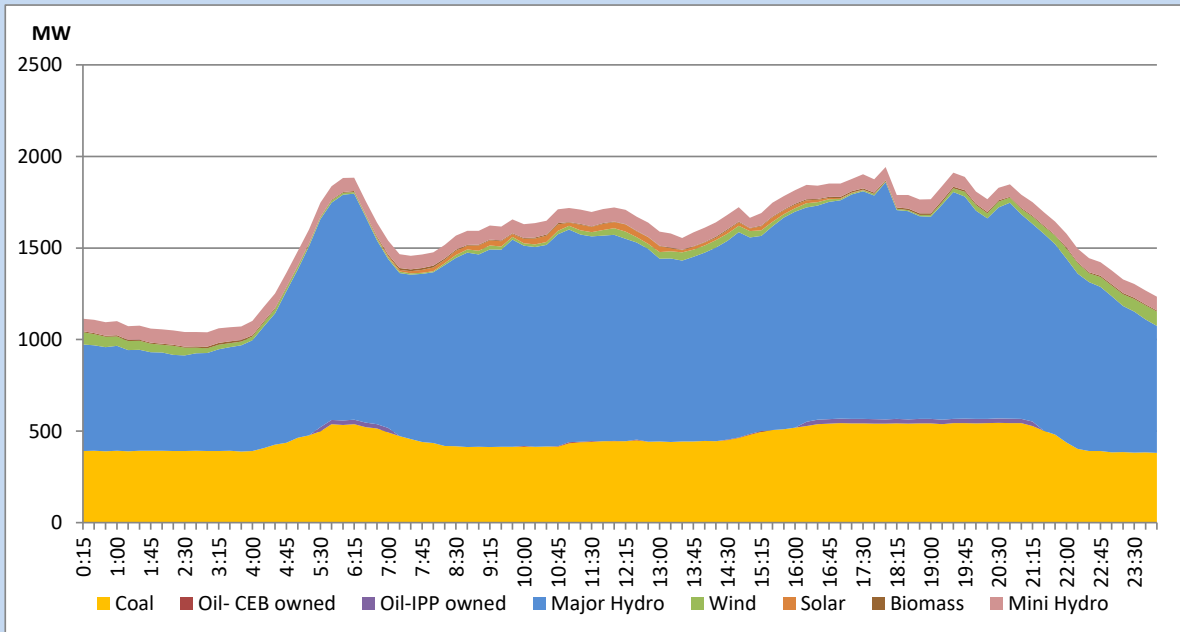


The above figures are excluding contribution from Roof Top Solar, 1MW solar, certain Wind plants and Mini Hydro plants

Daily Load Curve of the Previous day

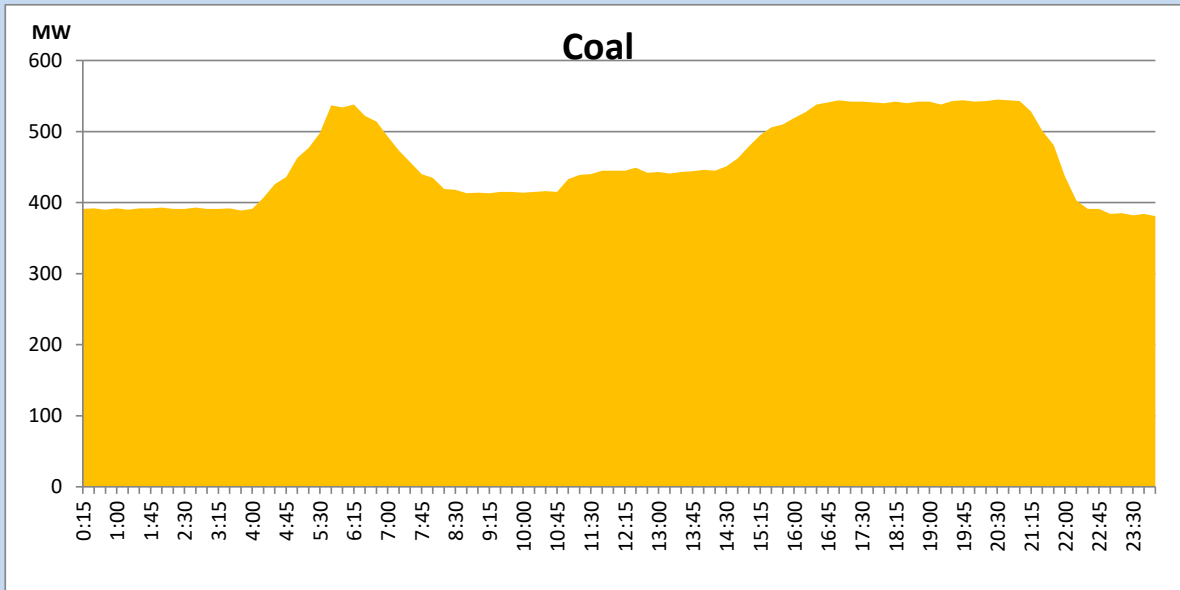
October 19, 2022

Solar and wind data is based on Telemetered Power Stations only



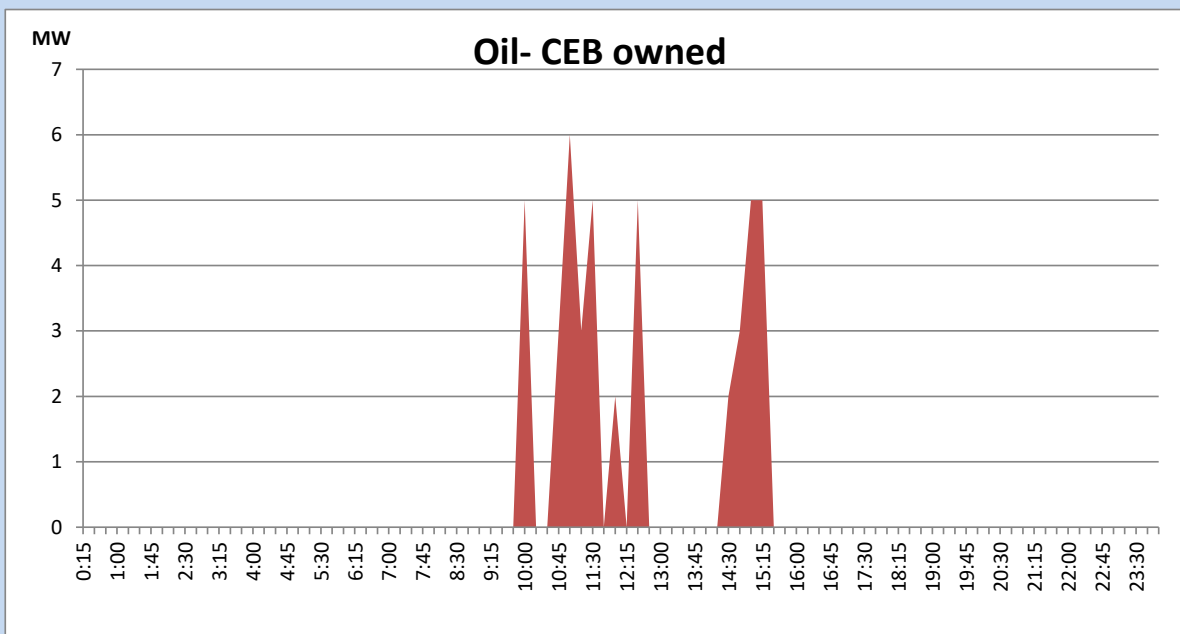
Coal Generation during the Previous day

October 19, 2022



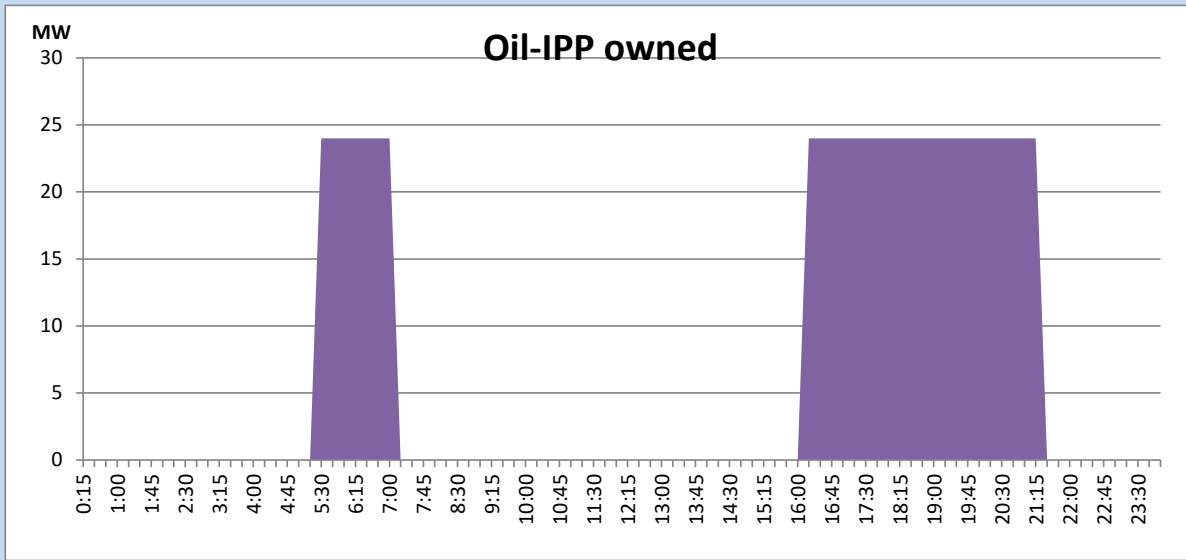
CEB Oil Plant Generation during the Previous day

October 19, 2022



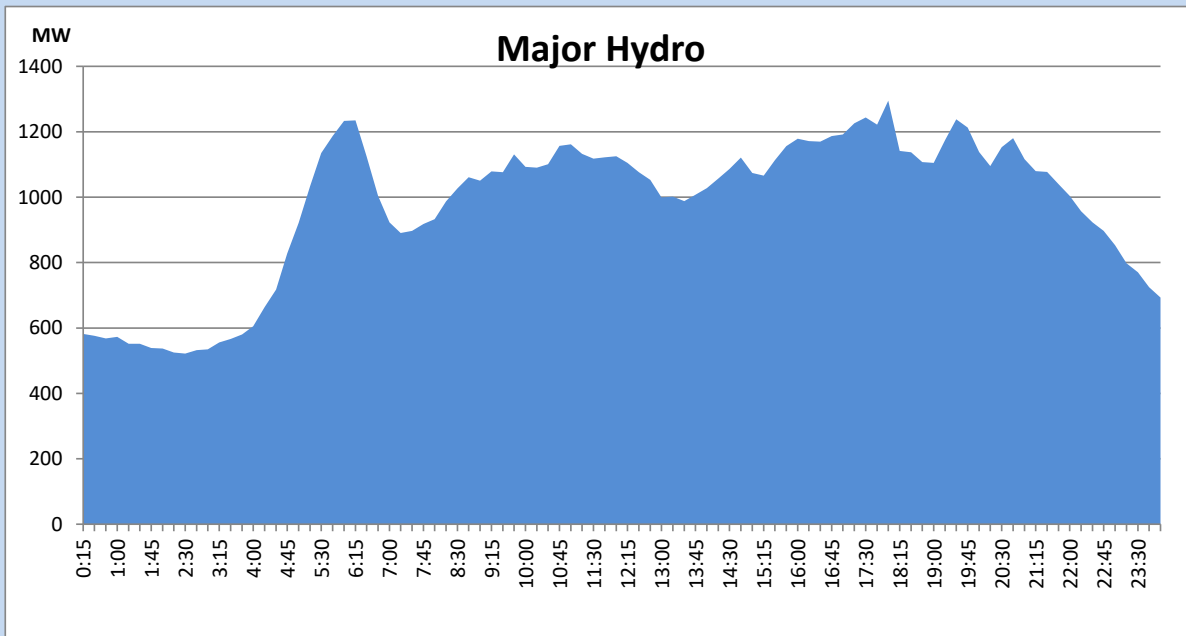
IPP Oil Plant Generation during the Previous day

October 19, 2022



Major Hydro Generation during the Previous day

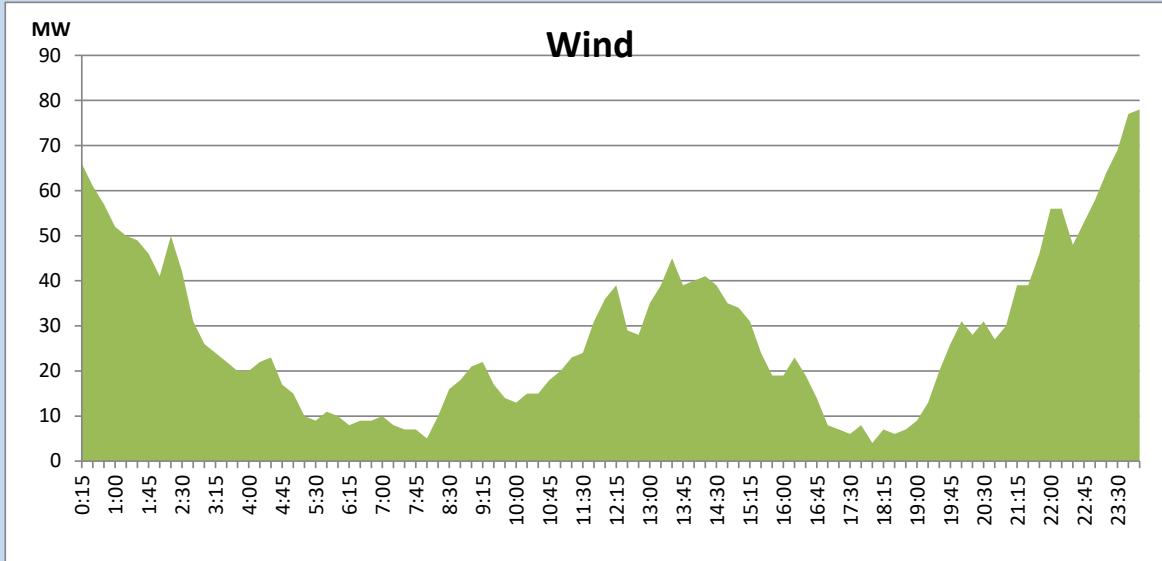
October 19, 2022



Wind Generation during the Previous day

October 19, 2022

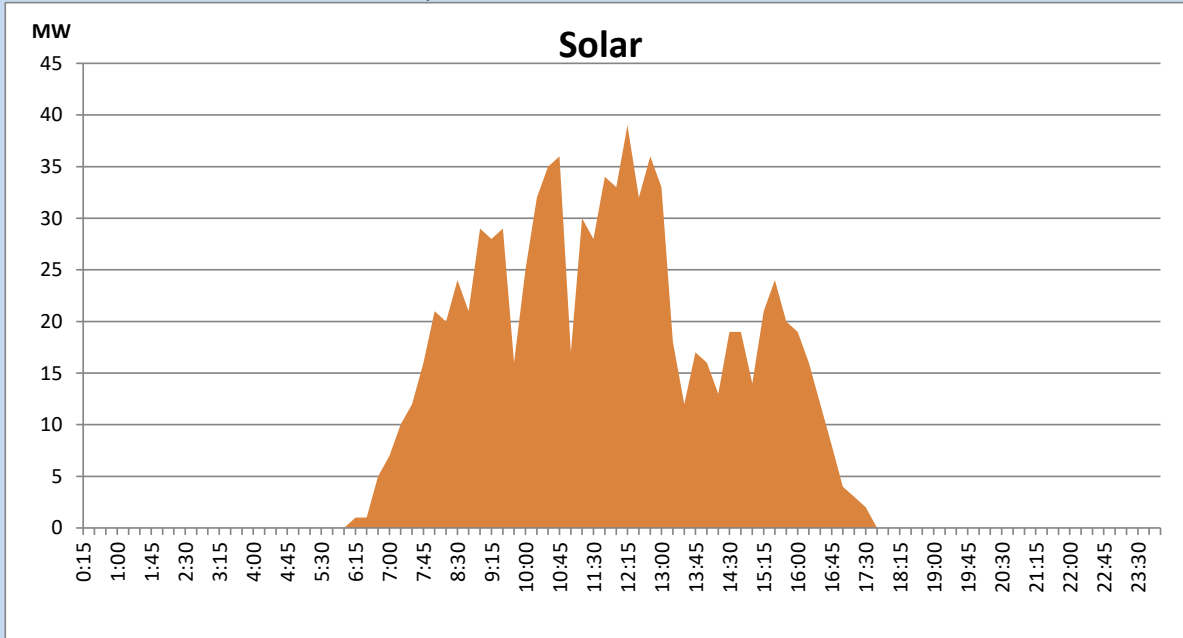
Based on Telemetered Power Stations only



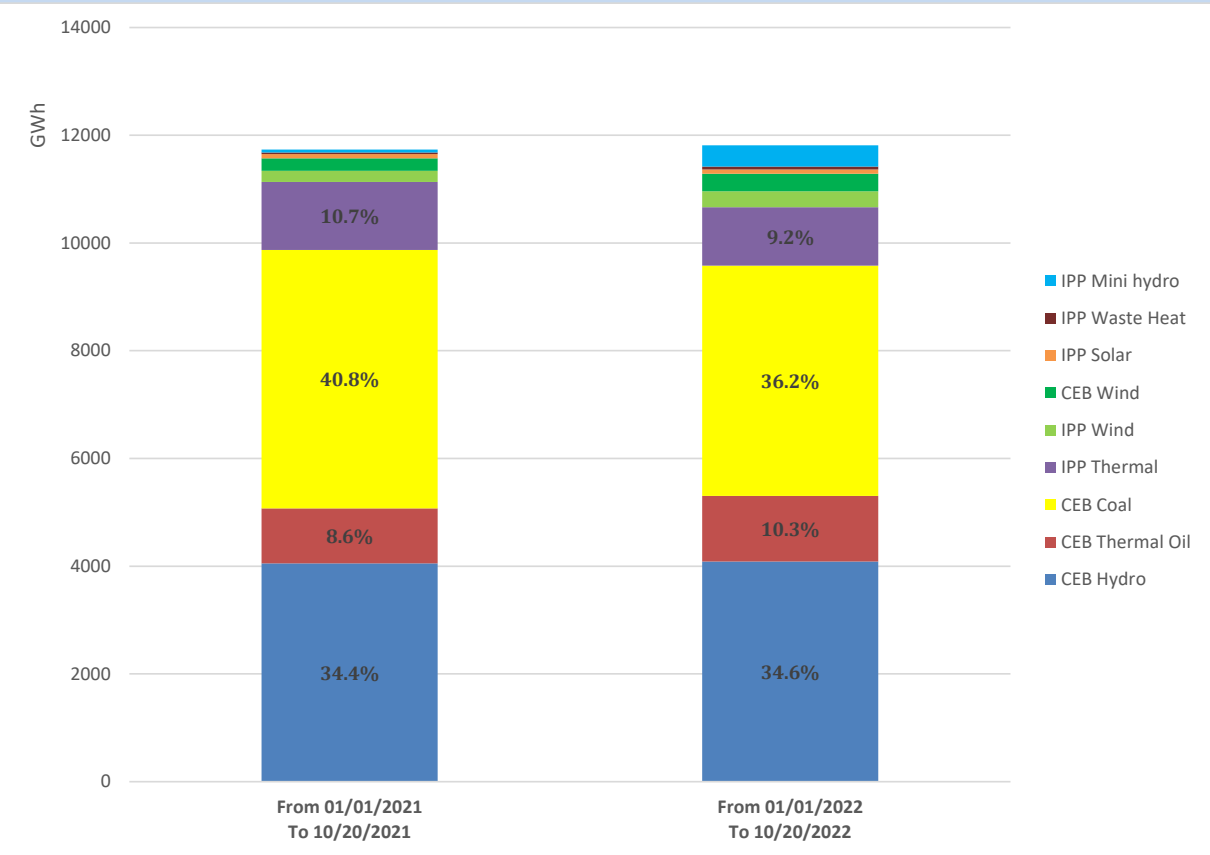
Solar Generation during the Previous day

October 19, 2022

Based on Telemetered Power Stations only



Cumulative Dispatch Comparison with Last Year



Thermal Plant Fuel types

Power Station	Primary Fuel
CEB Thermal	
Sapugaskanda 1	Heavy Fuel
Sapugaskanda 2	Heavy Fuel
Kelanitissa Small Gas Turbines	Auto Diesel
GT 7 - Kelanitissa	Auto Diesel
Kelanitissa CCY	Naphtha or Diesel
Lakvijaya 1	Coal
Lakvijaya 2	Coal
Lakvijaya 3	Coal
Uthuru Janani	Heavy Fuel
Barge CEB	Heavy Fuel

Power Station	Primary Fuel
Private Thermal	
Sojitz - Kelanitissa	Auto Diesel
West Coast	Auto Diesel / Heavy Fuel
ACE Matara	Heavy Fuel
ACE Embilipitiya	Heavy Fuel

Major Incidents during the day -as reported by CEB morning of

October 21, 2022

- 1) Manual load shedding carried out from 16:00hrs to 20:40hrs.
- 2) Laxapana, Canyon and Norton ponds spilled intermittently and continues to the present hour.
- 3) Kukule pond spilling stopped at 12:10hrs and started again at 18:38hrs.Kukule spilling continues to the present hour.
- 4) Upper Kotmale pond spilling started at 4:54hrs(21.10.2022) and continues to the present hour.