

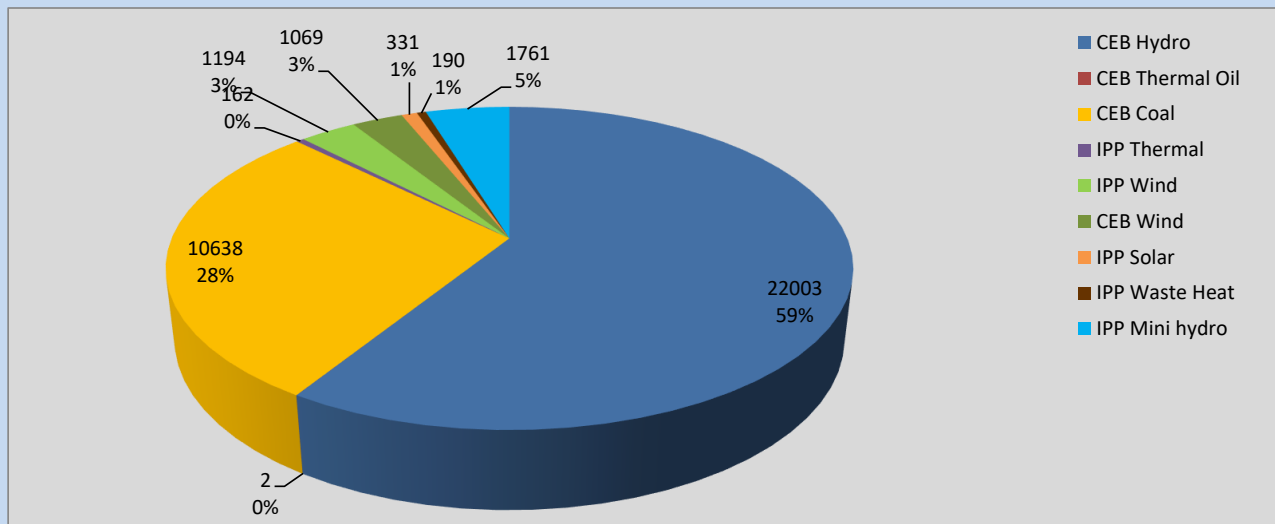
# Generation and Reservoirs Statistics

October 18, 2022



PUBLIC UTILITIES COMMISSION OF SRI LANKA

## Daily Generation Mix in MWh



**Total Generation** **37,350 MWh**

Note: Above data is excluding contribution from Roof Top Solar, 1MW Solar and certain Mini Hydro plants

## Cumulative Dispatch

Note: Following data is Excluding contribution from Roof Top Solar, 1MW solar and Mini Hydro plants

### For Current Month

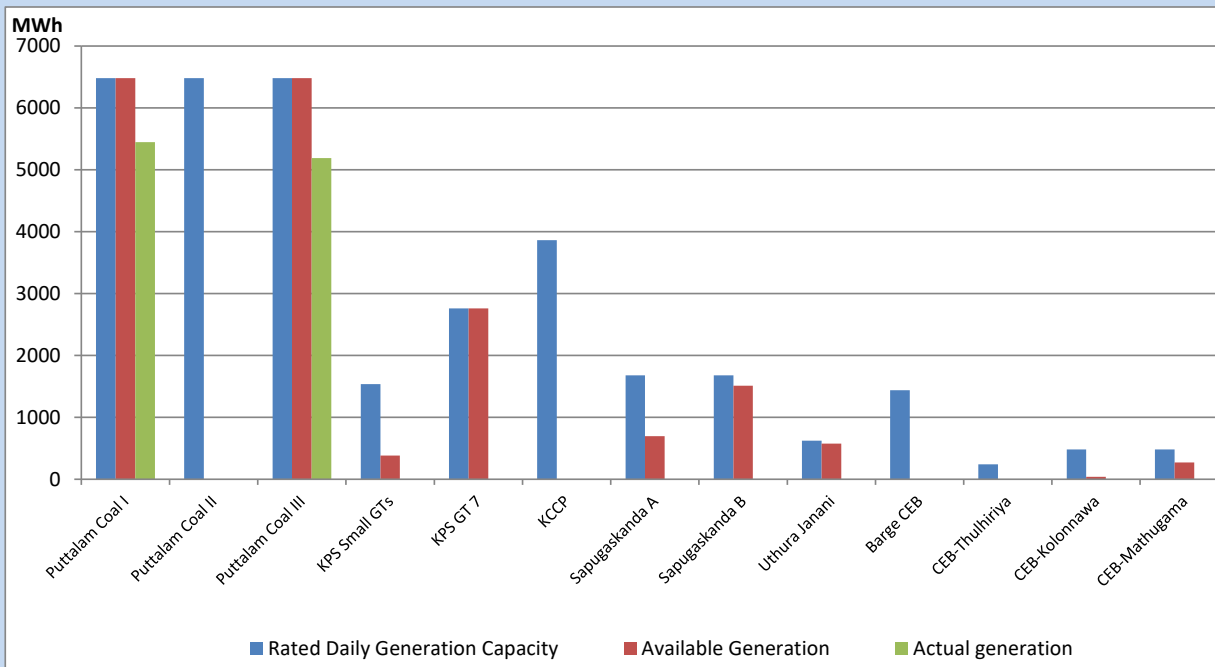
Category	Dispatch (GWh)	Percentage
CEB Hydro	339.85	50.93%
CEB Thermal Oil	38.12	5.71%
CEB Coal	211.36	31.68%
IPP Thermal	7.28	1.09%
SPP Wind	17.09	2.56%
CEB Wind	16.85	2.53%
SPP Solar	5.08	0.76%
SPP Solid Waste	3.03	0.45%
Mini Hydro	28.58	4.28%
<b>Total</b>	<b>667.24</b>	

### For Current Year

Category	Dispatch (GWh)	Percentage
CEB Hydro	4,040.0	34.42%
CEB Thermal Oil	1,216.8	10.37%
CEB Coal	4,252.5	36.23%
IPP Thermal	1,083.0	9.23%
SPP Wind	298.1	2.54%
CEB Wind	322.9	2.75%
SPP Solar	76.5	0.65%
SPP Solid Waste	57.9	0.49%
Mini Hydro	389.1	3.32%
<b>Total</b>	<b>11,736.6</b>	

## CEB owned Thermal Plant Dispatch

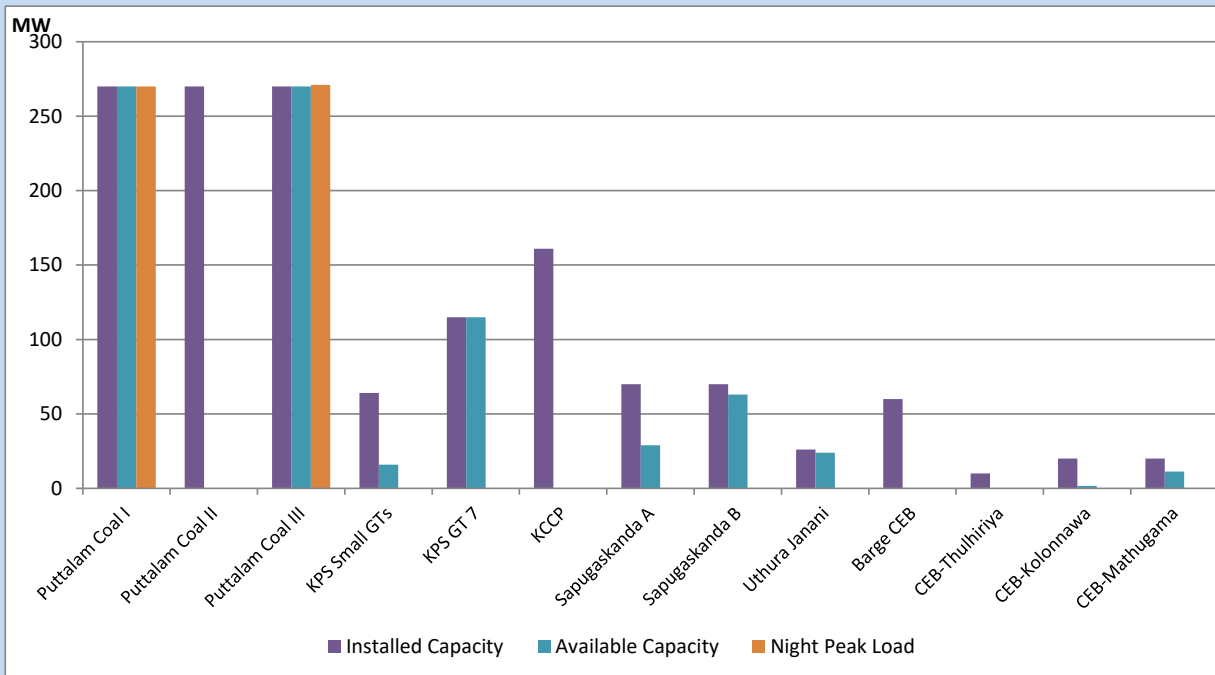
October 18, 2022



Available Generation is estimated based on plant availability at 6.00am on

October 19, 2022

## CEB owned Thermal Plant Loading at the Night Peak



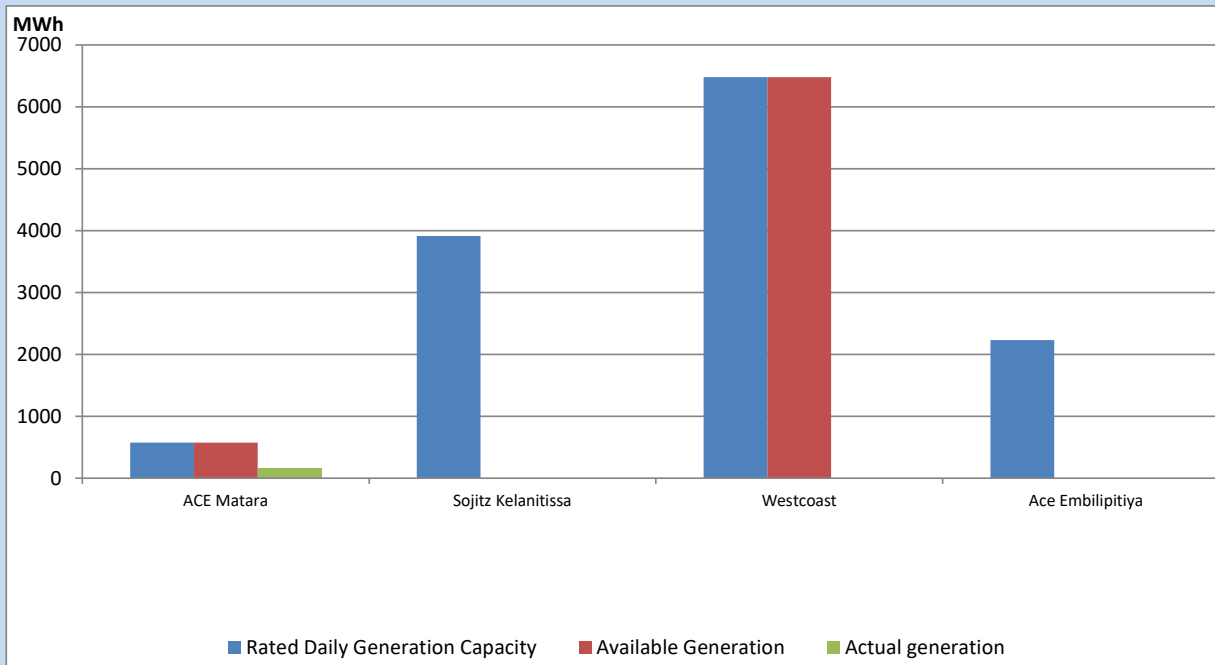
Note- Plant availability is recorded at 6.00 am on

October 19, 2022

## IPP owned Thermal Plant Dispatch

October 18, 2022

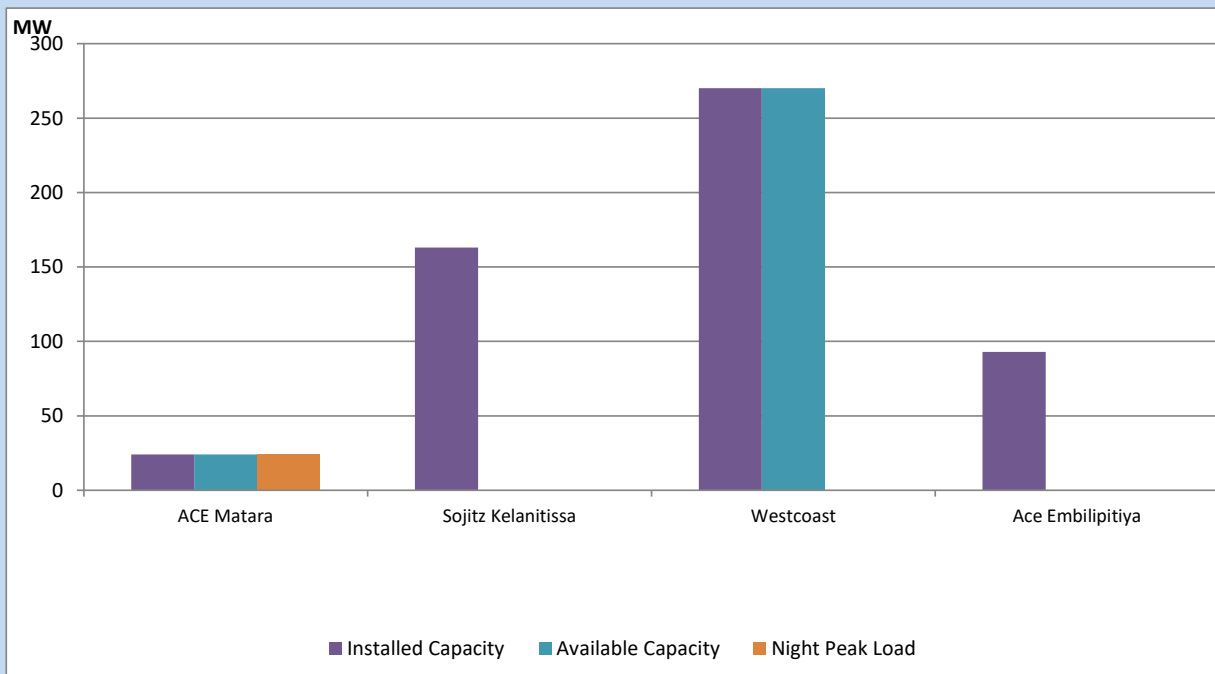
Asia Power, V Power Pallekale, Vpower Galle, V Power Horana, Vpower Hambantota, Vpower Valachchena and Altaqa Mahiyanganaya are not available due to expiration of PPAs



Available Generation is estimated based on plant availability at 6.00am on

October 19, 2022

## IPP owned Thermal Plant Loading at the Night Peak

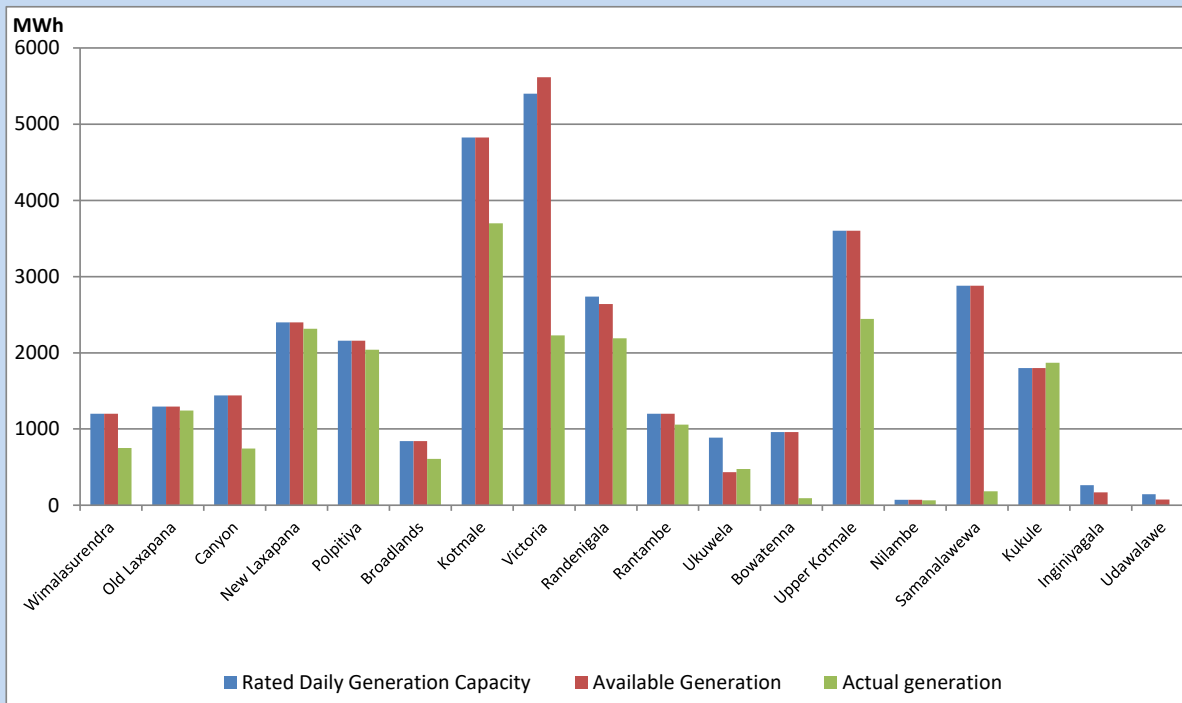


Note- Plant availability is recorded at 6.00 am on

October 19, 2022

## Major Hydro Plant Dispatch

October 18, 2022

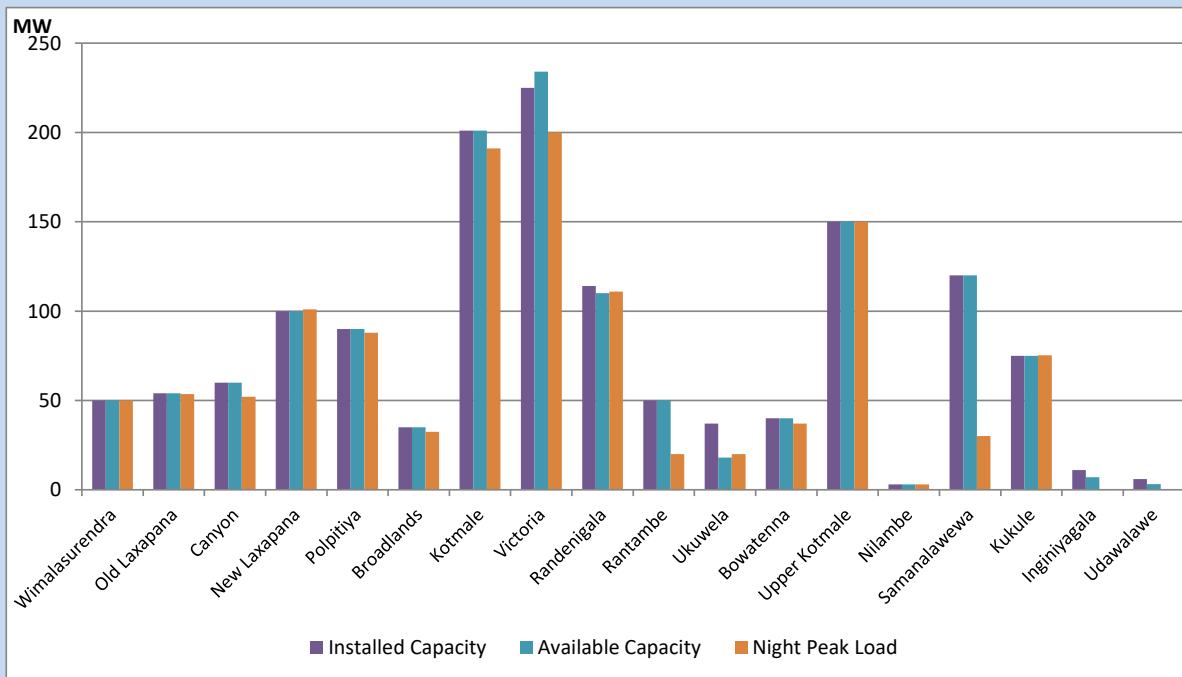


Available Generation is estimated based on plant availability at 6.00am on  
Broadlands power plant is operating in the Commissioning Stage

October 19, 2022

## Major Hydro Plant Loading at Night Peak

October 18, 2022



Note- Plant availability is recorded at 6.00 am on  
Broadlands power plant is operating in the Commissioning Stage

October 19, 2022

## Summary of Major Plant performance

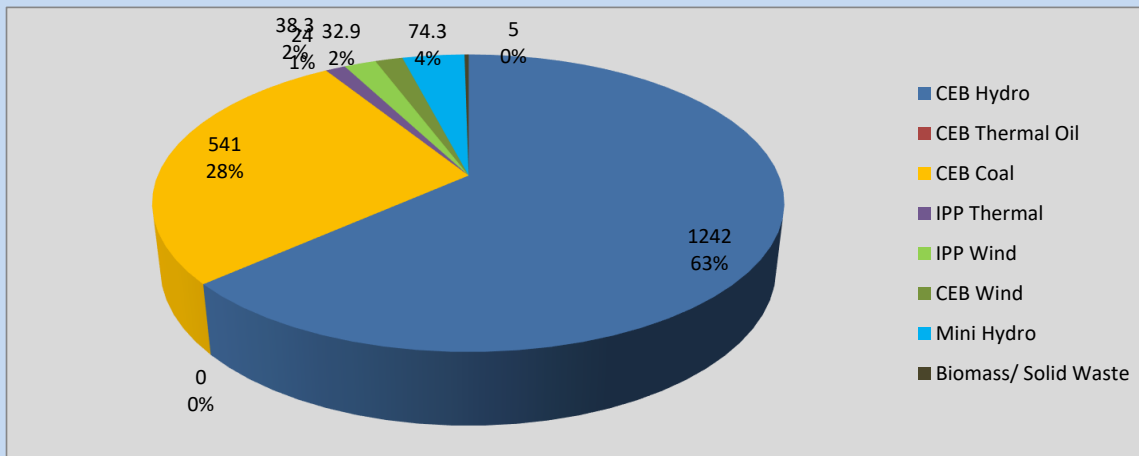
Plant	Installed Capacity	Plant Availability	Night peak Load	Plant Dispatch
	(MW)	(MW)	(MW)	(MWh)
Wimalasurendra	50	50	50	750
Old Laxapana	54	54	54	1,243
Canyon	60	60	52	745
New Laxapana	100	100	101	2,314
Polpitiya	90	90	88	2,040
Broadlands	35	35	33	608
Kotmale	201	201	191	3,700
Victoria	225	234	200	2,227
Randenigala	114	110	111	2,191
Rantambe	50	50	20	1,056
Ukuwela	37	18	20	476
Bowatenna	40	40	37	93
Upper Kotmale	150	150	150	2,443
Nilambe	3	3	3	65
Samanalawewa	120	120	30	181
Kukule	75	75	75	1,871
Inginiyagala	11	7	0	0
Udawalawe	6	3	0	0
Puttalam Coal I	270	270	270	5,449
Puttalam Coal II	270	0	0	0
Puttalam Coal III	270	270	271	5,189
KPS Small GTs	64	16	0	0
KPS GT 7	115	115	0	0
KCCP	161	0	0	0
Sapugaskanda A	70	29	0	0
Sapugaskanda B	70	63	0	2
Uthura Janani	26	24	0	0
Barge CEB	60	0	0	0
CEB-Thulhiriya	10	0	0	0
CEB-Kolonnawa	20	2	0	0
CEB-Mathugama	20	11	0	0
ACE Matara	24	24	24	162
Sojitz Kelanitissa	163	0	0	0
West Coast	270	270	0	0
ACE Embilipitiya	93	0	0	0
<b>Total</b>	<b>3,397</b>	<b>2,494</b>	<b>1,930</b>	<b>37,350</b>

Plant availability is the availability recorded at 6 am on

October 19, 2022

## Contribution to the Night Peak in MW

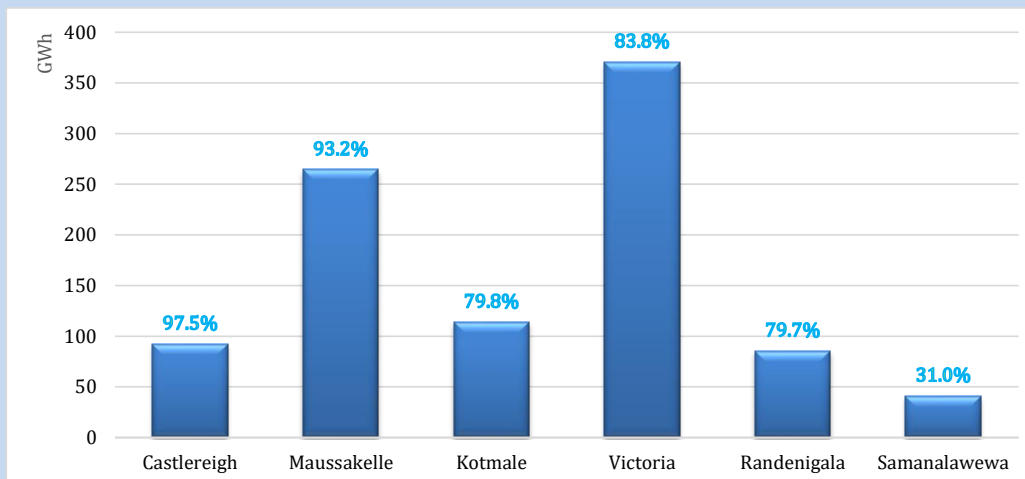
October 18, 2022



Night Peak*	1,957.6 MW
Day Peak	1,777.7 MW
Minimum Demand	1,040.8 MW

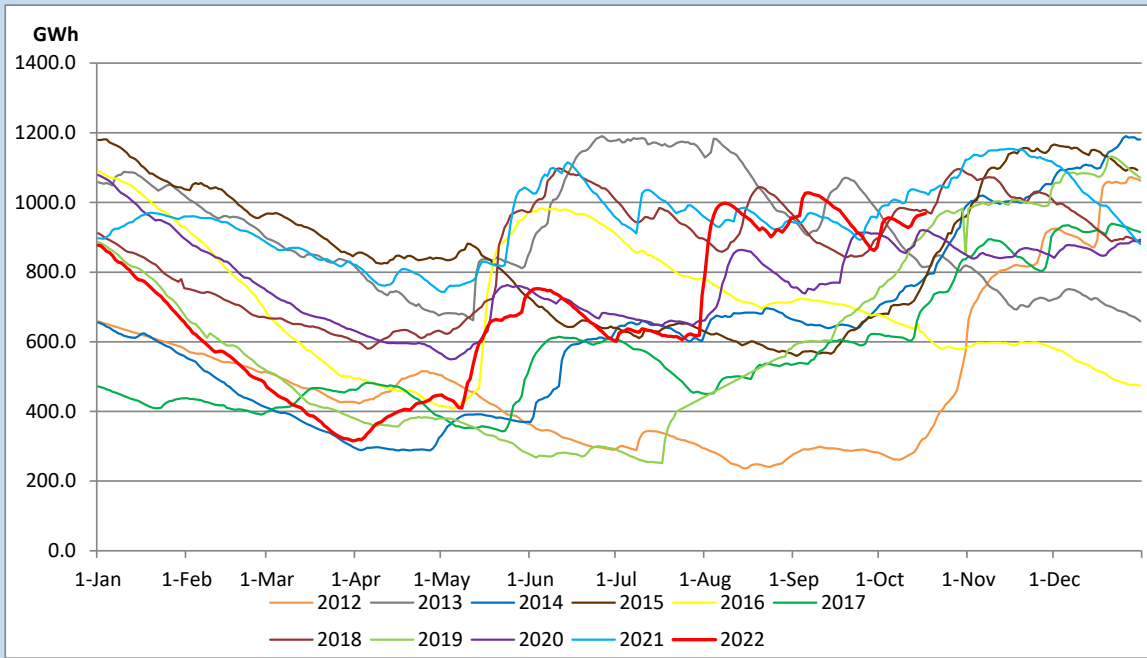
Above figures are excluding contribution from Roof Top Solar, 1MW solar, certain Wind plants and Mini Hydro plants

## Reservoir Levels - as at 06.00 Hr on October 19, 2022

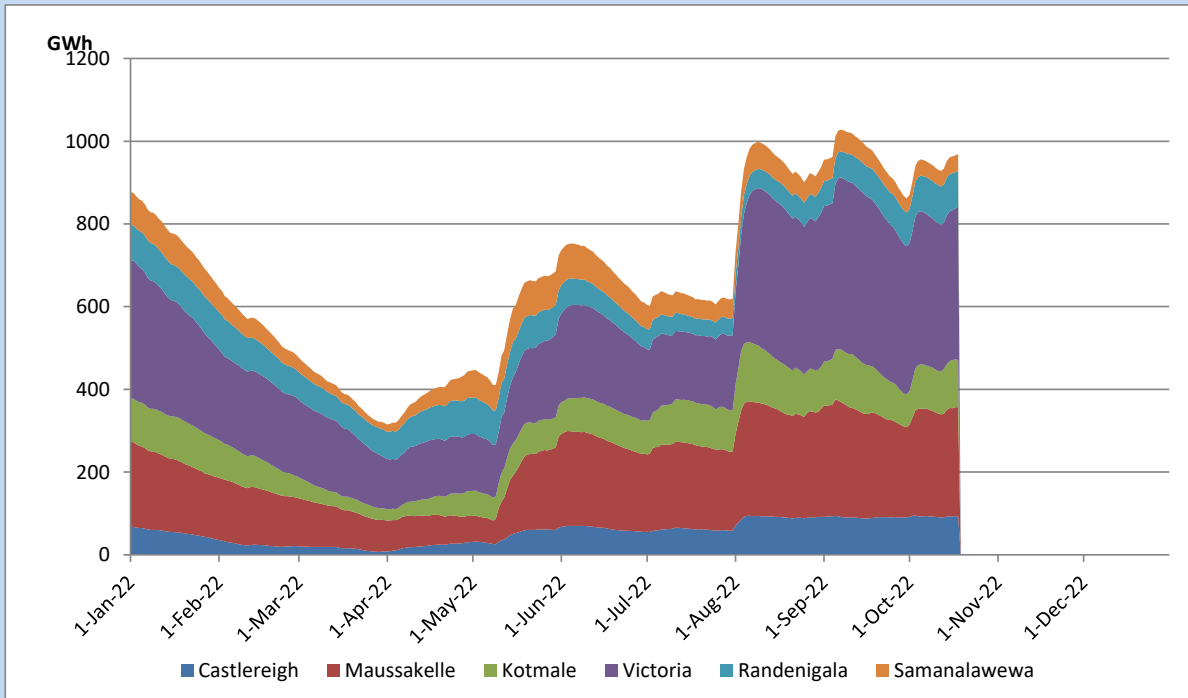


Total Reservoir Level	969 GWh
% of Total capacity	80.4%

## Comparison of Total Reservoir Storage Levels with Past Years

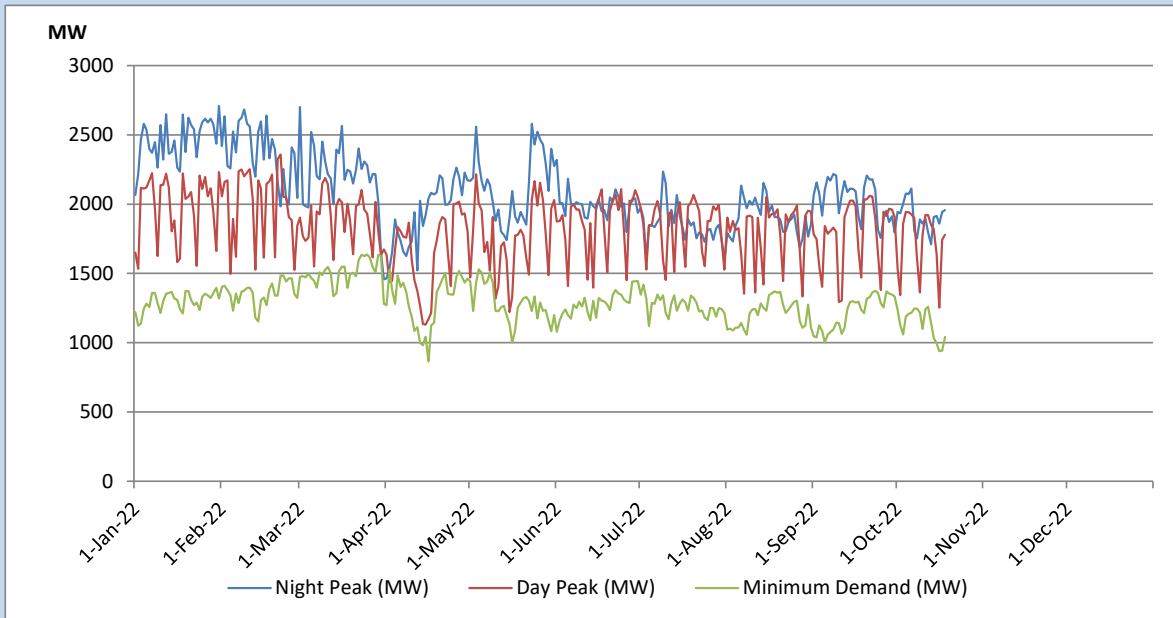


## Variation of Major Hydro Reservoir Levels in the current year (GWh)





## Variation of Demand during the current year

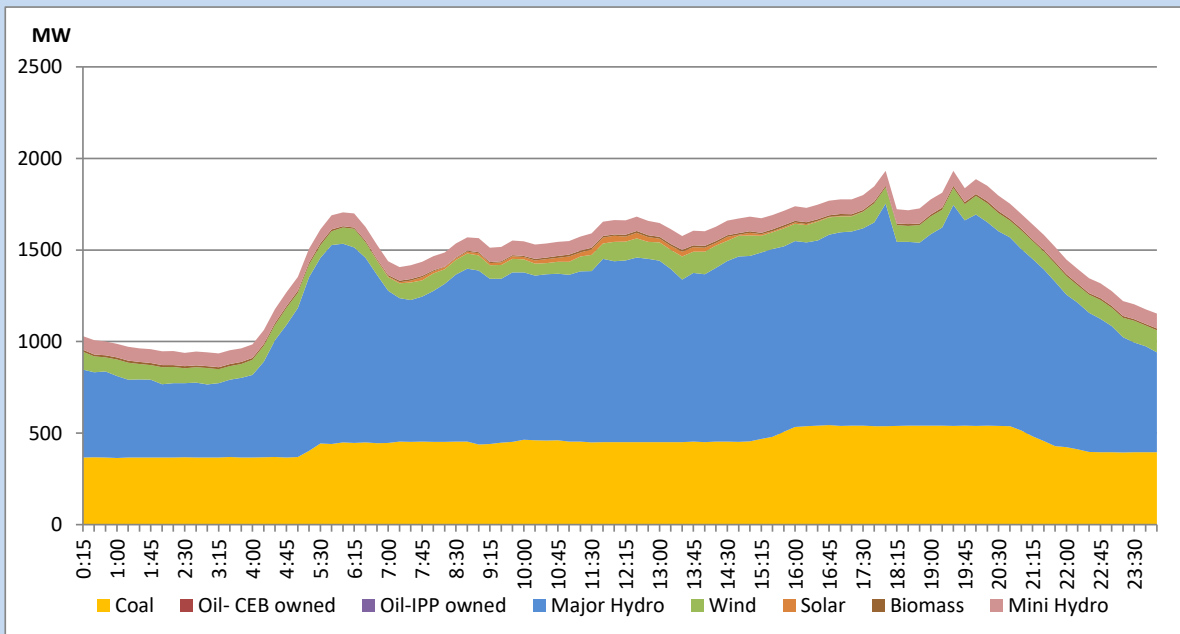


The above figures are excluding contribution from Roof Top Solar, 1MW solar, certain Wind plants and Mini Hydro plants

## Daily Load Curve of the Previous day

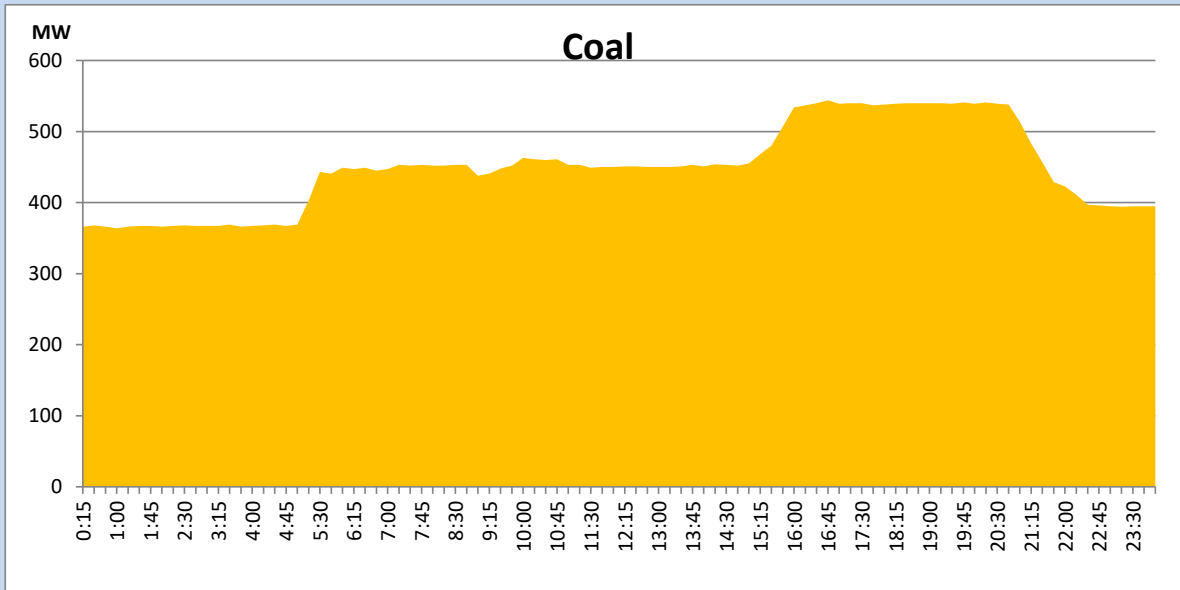
October 17, 2022

Solar and wind data is based on Telemetered Power Stations only



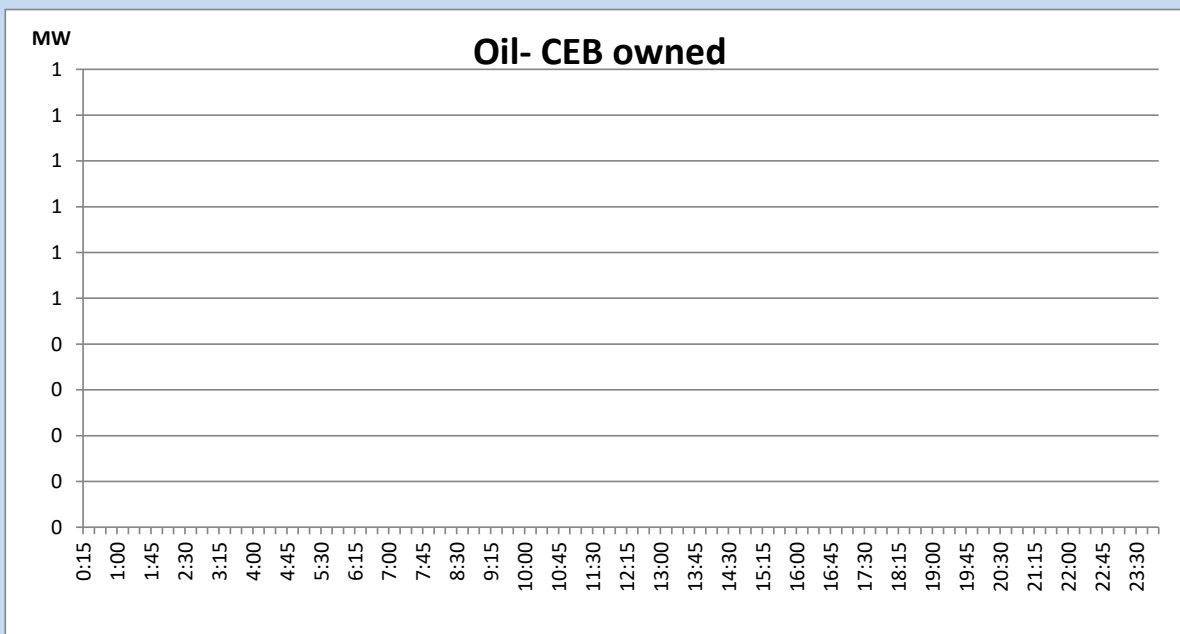
## Coal Generation during the Previous day

October 17, 2022



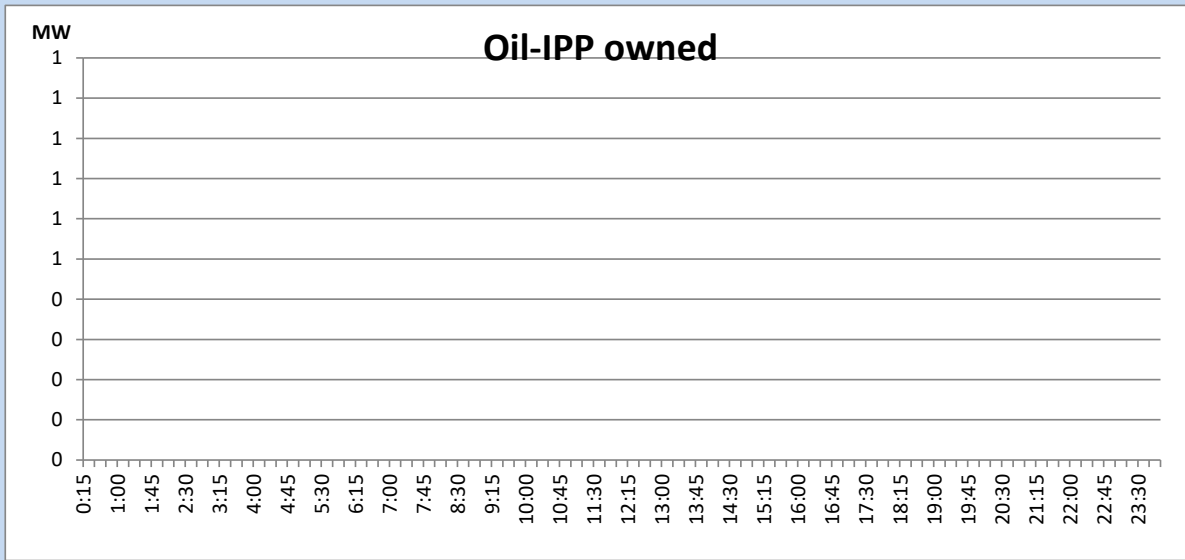
## CEB Oil Plant Generation during the Previous day

October 17, 2022



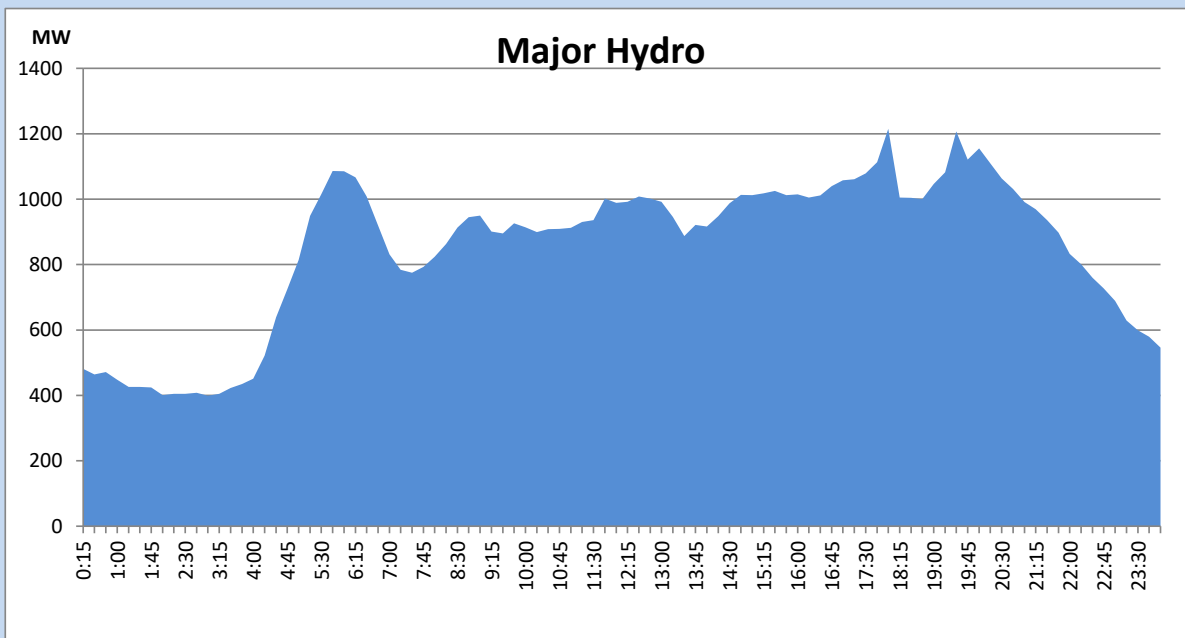
IPP Oil Plant Generation during the Previous day

October 17, 2022



Major Hydro Generation during the Previous day

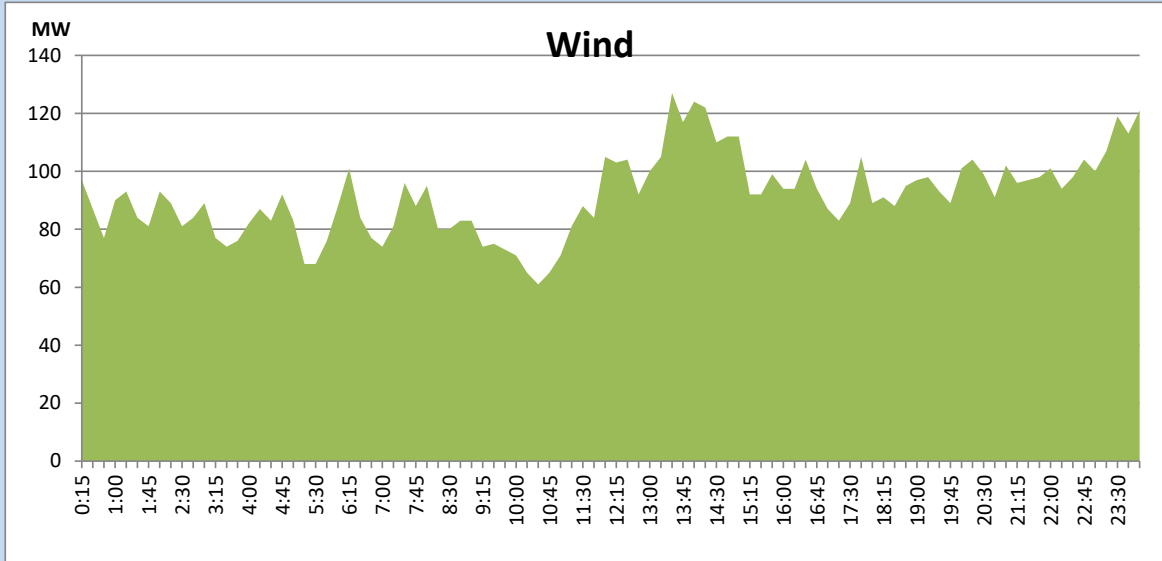
October 17, 2022



## Wind Generation during the Previous day

October 17, 2022

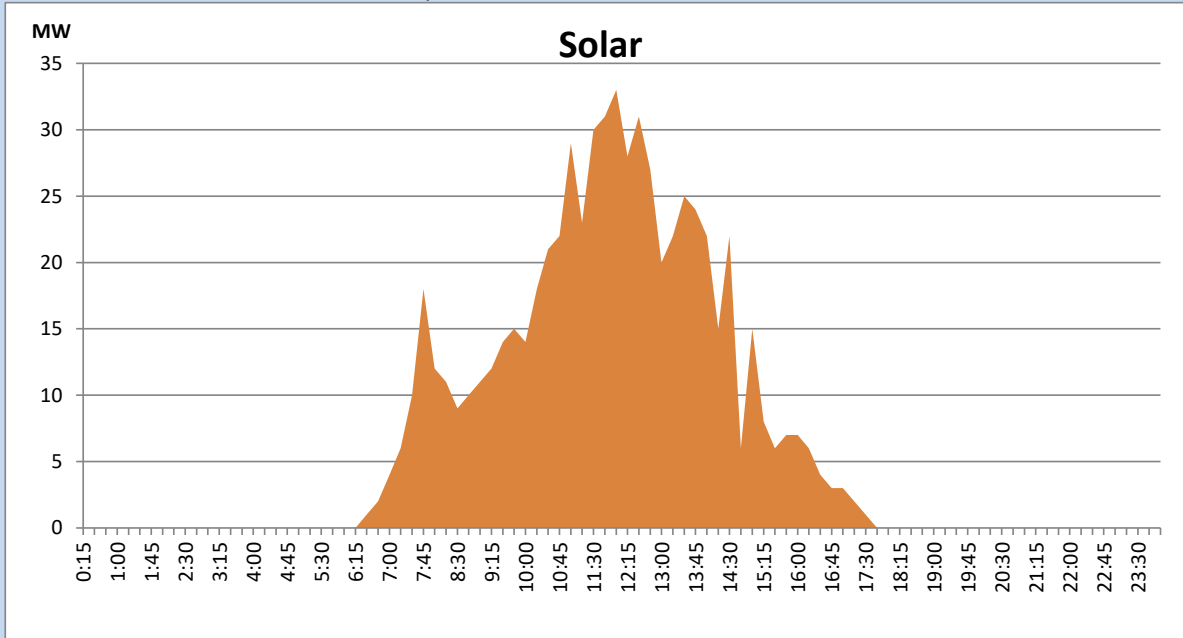
Based on Telemetered Power Stations only



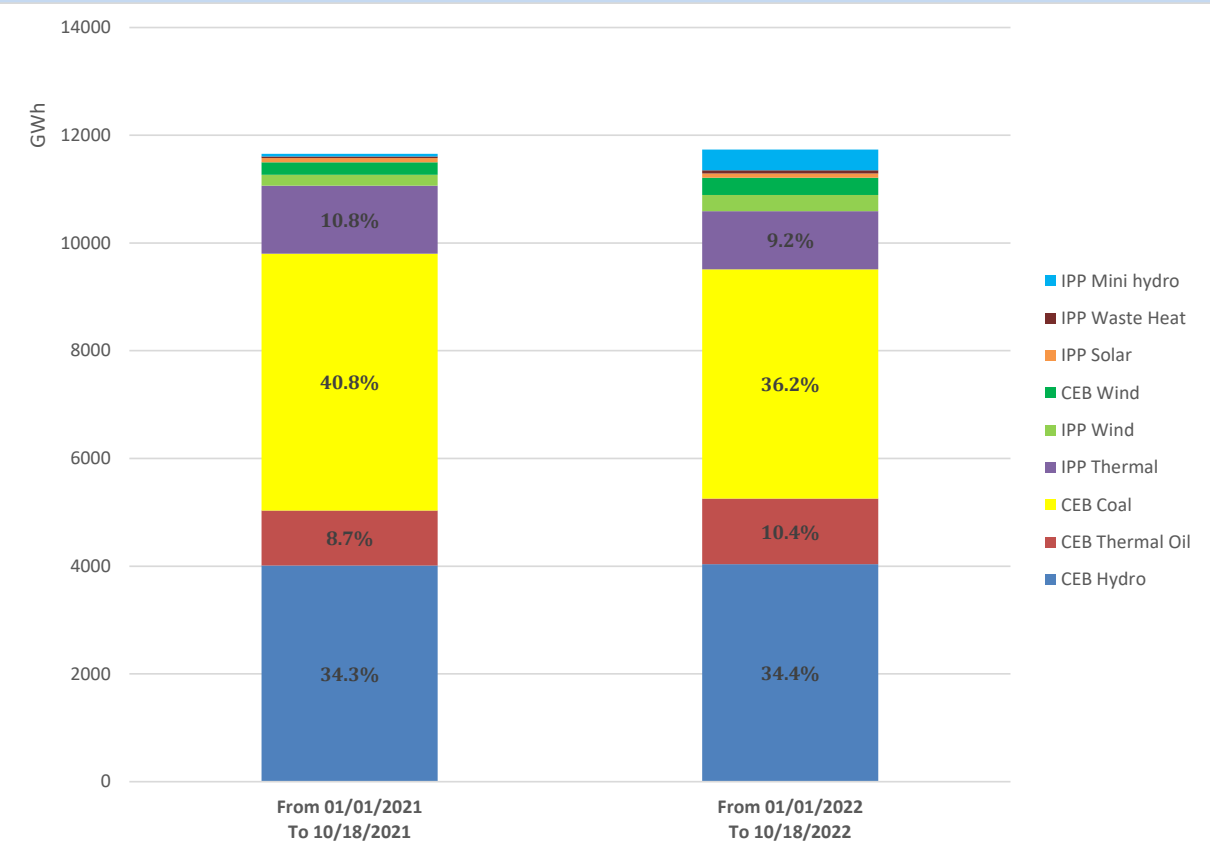
## Solar Generation during the Previous day

October 17, 2022

Based on Telemetered Power Stations only



# Cumulative Dispatch Comparison with Last Year



## Thermal Plant Fuel types

Power Station	Primary Fuel
CEB Thermal	
Sapugaskanda 1	Heavy Fuel
Sapugaskanda 2	Heavy Fuel
Kelanitissa Small Gas Turbines	Auto Diesel
GT 7 - Kelanitissa	Auto Diesel
Kelanitissa CCY	Naphtha or Diesel
Lakvijaya 1	Coal
Lakvijaya 2	Coal
Lakvijaya 3	Coal
Uthuru Janani	Heavy Fuel
Barge CEB	Heavy Fuel

Power Station	Primary Fuel
Private Thermal	
Sojitz - Kelanitissa	Auto Diesel
West Coast	Auto Diesel / Heavy Fuel
ACE Matara	Heavy Fuel
ACE Embilipitiya	Heavy Fuel

## Major Incidents during the day -as reported by CEB morning of

October 19, 2022

- 1) Manual load shedding carried out from 18:00hrs to 19:20hrs.
- 2) Kiribathkumbura-Nawalapitiya cct which tripped on 14.10.2022, was restored at 11:09hrs
- 3) Norton pond spilling started at 11:58hrs and stopped at 23:35hrs.Laxapana pond spilling started at 13:10hrs and stopped at 02:00hrs(19.10.2022). Canyon pond spilling started at 13:28hrs and stopped at 22:09hrs.
- 4) Kukule spilling continues to the present hour.