

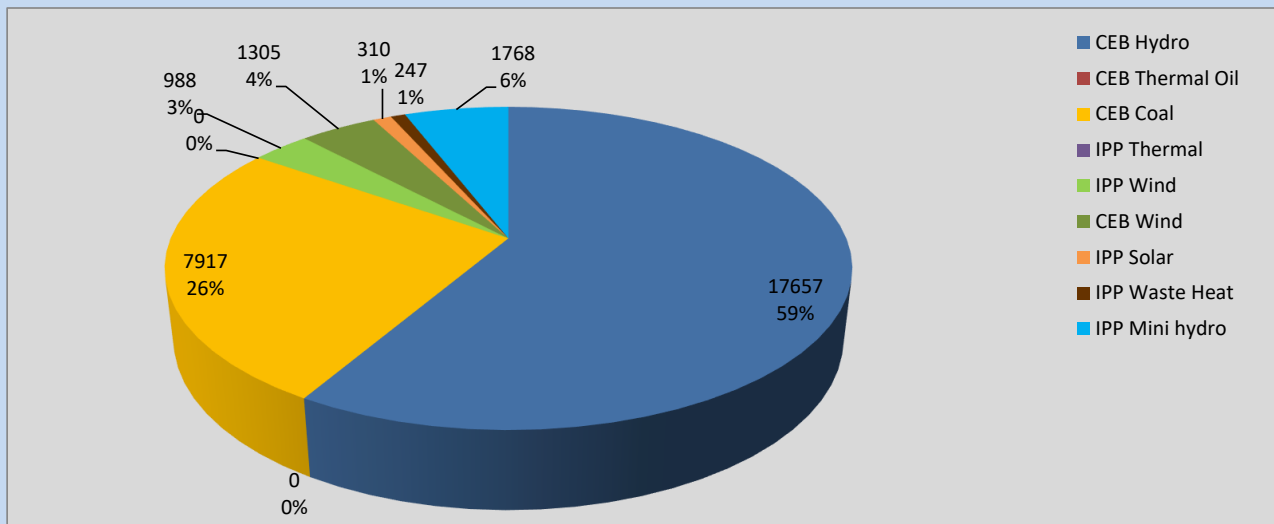
Generation and Reservoirs Statistics

October 16, 2022



PUBLIC UTILITIES COMMISSION OF SRI LANKA

Daily Generation Mix in MWh



Total Generation **30,192 MWh**

Note: Above data is excluding contribution from Roof Top Solar, 1MW Solar and certain Mini Hydro plants

Cumulative Dispatch

Note: Following data is Excluding contribution from Roof Top Solar, 1MW solar and Mini Hydro plants

For Current Month

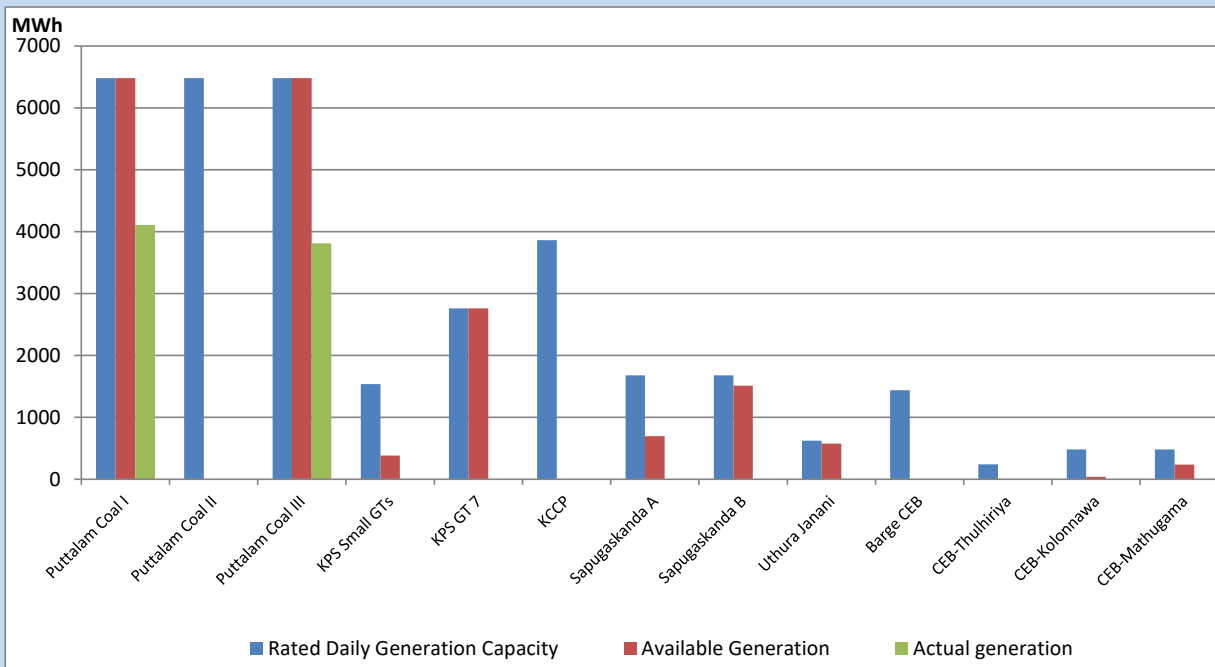
Category	Dispatch (GWh)	Percentage
CEB Hydro	297.23	50.08%
CEB Thermal Oil	38.12	6.42%
CEB Coal	189.93	32.00%
IPP Thermal	7.12	1.20%
SPP Wind	14.68	2.47%
CEB Wind	14.32	2.41%
SPP Solar	4.47	0.75%
SPP Solid Waste	2.61	0.44%
Mini Hydro	25.03	4.22%
Total	593.51	

For Current Year

Category	Dispatch (GWh)	Percentage
CEB Hydro	3,997.4	34.27%
CEB Thermal Oil	1,216.8	10.43%
CEB Coal	4,231.1	36.28%
IPP Thermal	1,082.9	9.28%
SPP Wind	295.7	2.53%
CEB Wind	320.4	2.75%
SPP Solar	75.9	0.65%
SPP Solid Waste	57.5	0.49%
Mini Hydro	385.6	3.31%
Total	11,662.8	

CEB owned Thermal Plant Dispatch

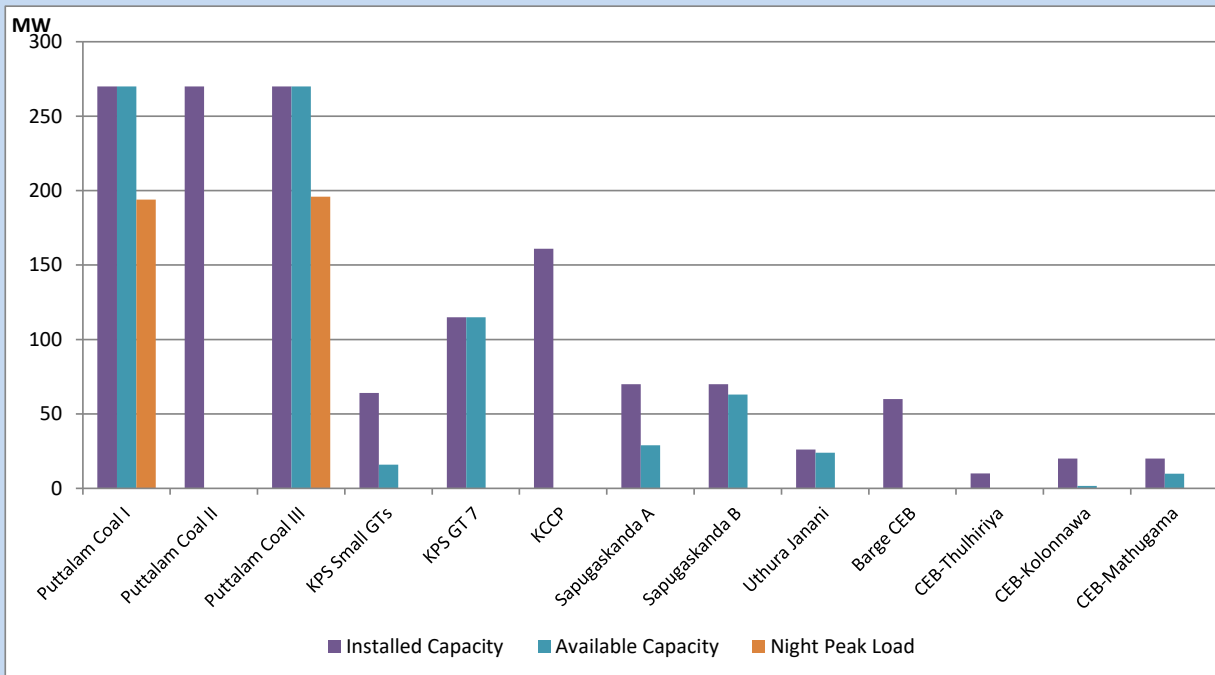
October 16, 2022



Available Generation is estimated based on plant availability at 6.00am on

October 17, 2022

CEB owned Thermal Plant Loading at the Night Peak



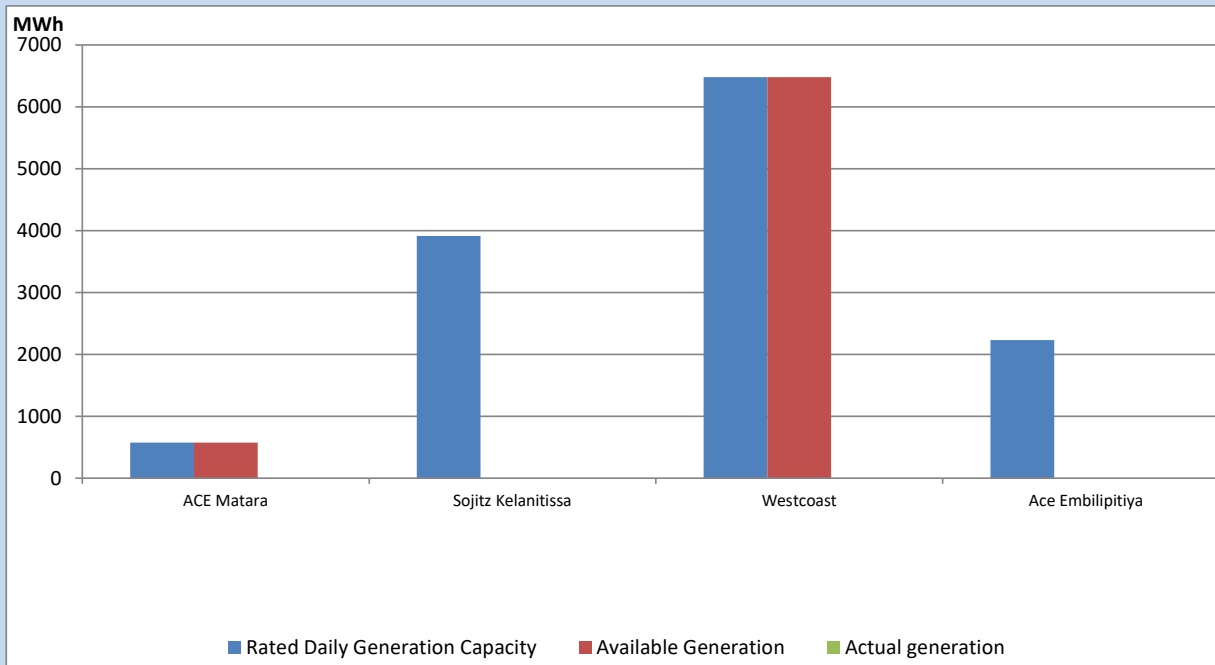
Note- Plant availability is recorded at 6.00 am on

October 17, 2022

IPP owned Thermal Plant Dispatch

October 16, 2022

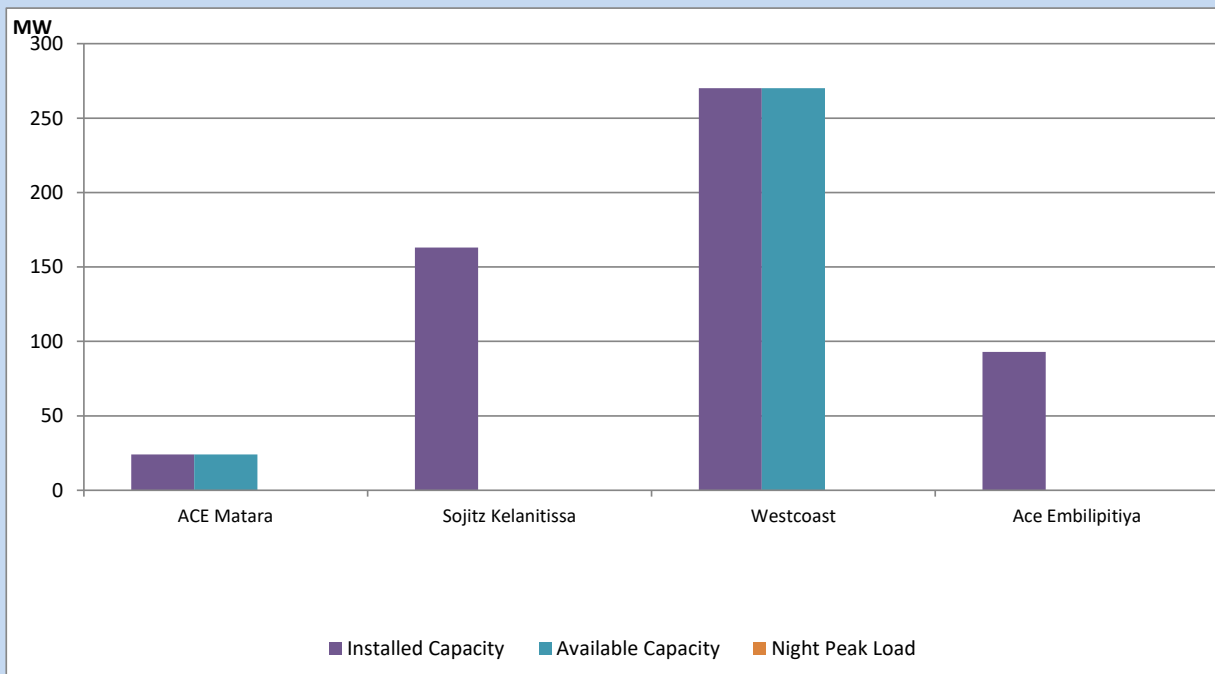
Asia Power, V Power Pallekale, Vpower Galle, V Power Horana, Vpower Hambantota, Vpower Valachchena and Altaqa Mahiyanganaya are not available due to expiration of PPAs



Available Generation is estimated based on plant availability at 6.00am on

October 17, 2022

IPP owned Thermal Plant Loading at the Night Peak

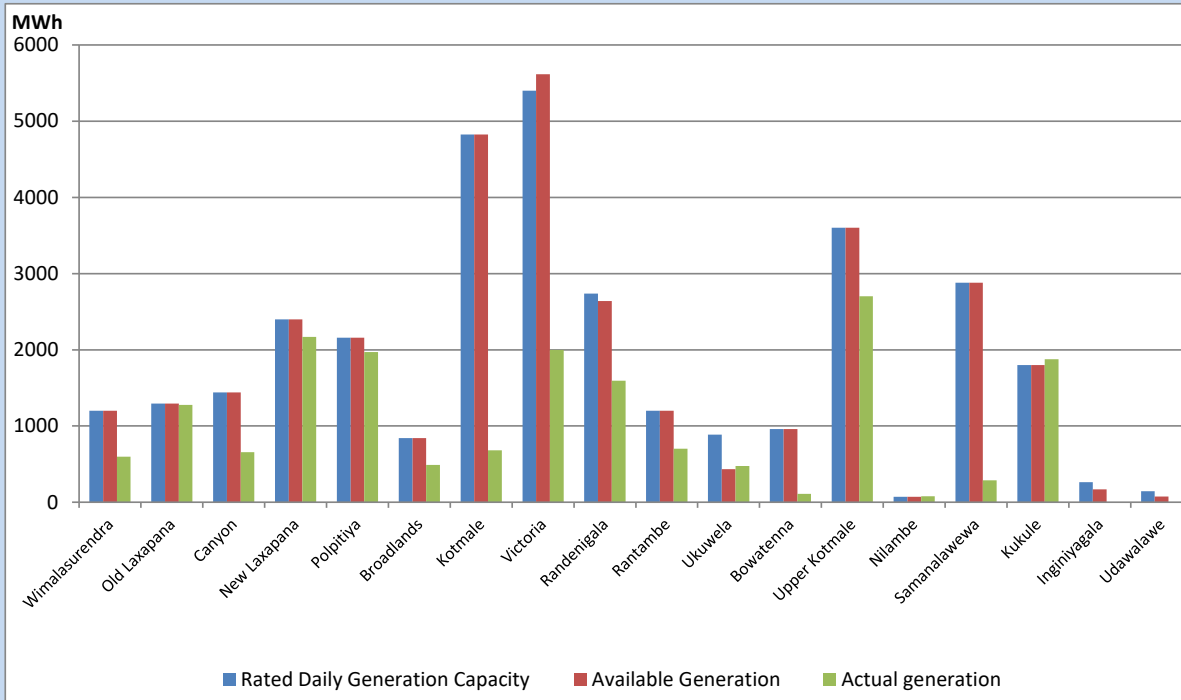


Note- Plant availability is recorded at 6.00 am on

October 17, 2022

Major Hydro Plant Dispatch

October 16, 2022

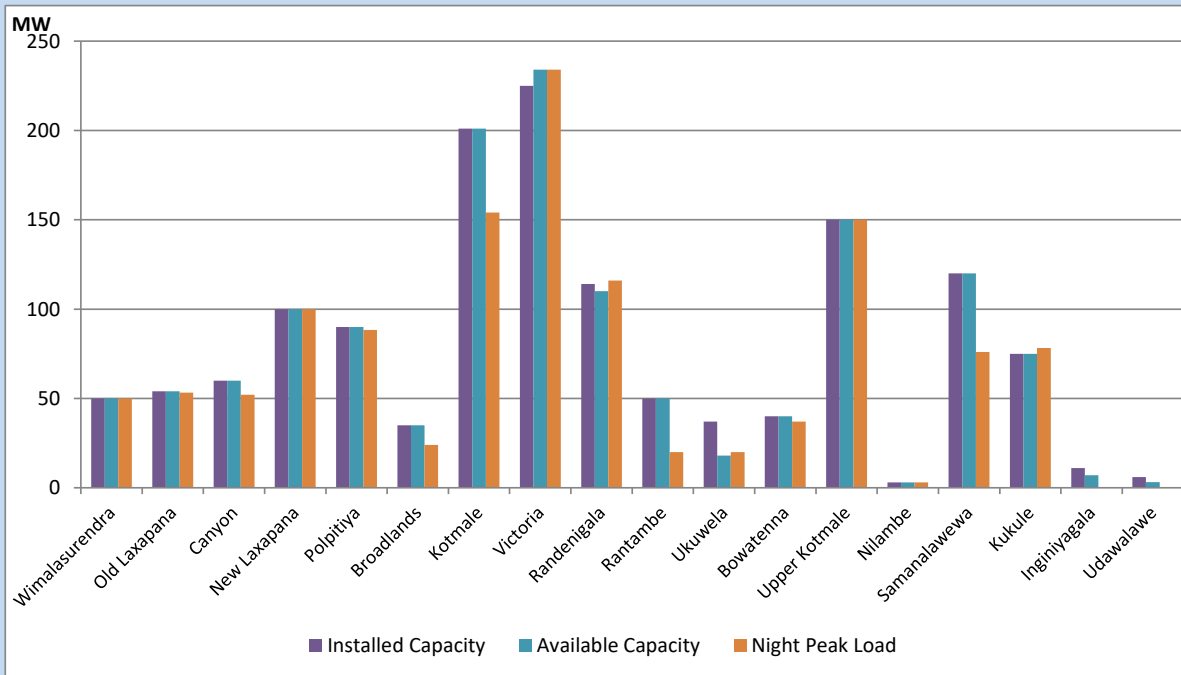


Available Generation is estimated based on plant availability at 6.00am on
 Broadlands power plant is operating in the Commissioning Stage

October 17, 2022

Major Hydro Plant Loading at Night Peak

October 16, 2022



Note- Plant availability is recorded at 6.00 am on
 Broadlands power plant is operating in the Commissioning Stage

October 17, 2022

Summary of Major Plant performance

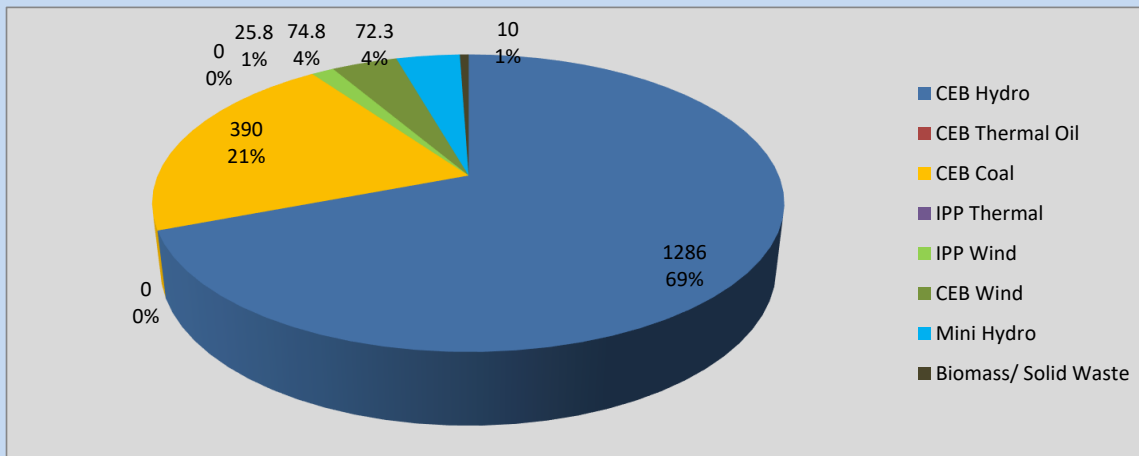
Plant	Installed Capacity	Plant Availability	Night peak Load	Plant Dispatch
	(MW)	(MW)	(MW)	(MWh)
Wimalasurendra	50	50	50	597
Old Laxapana	54	54	53	1,277
Canyon	60	60	52	655
New Laxapana	100	100	100	2,169
Polpitiya	90	90	88	1,972
Broadlands	35	35	24	488
Kotmale	201	201	154	680
Victoria	225	234	234	1,998
Randenigala	114	110	116	1,594
Rantambe	50	50	20	701
Ukuwela	37	18	20	474
Bowatenna	40	40	37	111
Upper Kotmale	150	150	150	2,701
Nilambe	3	3	3	77
Samanalawewa	120	120	76	287
Kukule	75	75	78	1,876
Inginiyagala	11	7	0	0
Udawalawe	6	3	0	0
Puttalam Coal I	270	270	194	4,106
Puttalam Coal II	270	0	0	0
Puttalam Coal III	270	270	196	3,811
KPS Small GTs	64	16	0	0
KPS GT 7	115	115	0	0
KCCP	161	0	0	0
Sapugaskanda A	70	29	0	0
Sapugaskanda B	70	63	0	0
Uthura Janani	26	24	0	0
Barge CEB	60	0	0	0
CEB-Thulhiriya	10	0	0	0
CEB-Kolonnawa	20	2	0	0
CEB-Mathugama	20	10	0	0
ACE Matara	24	24	0	0
Sojitz Kelanitissa	163	0	0	0
West Coast	270	270	0	0
ACE Embilipitiya	93	0	0	0
Total	3,397	2,493	1,829	30,192

Plant availability is the availability recorded at 6 am on

October 17, 2022

Contribution to the Night Peak in MW

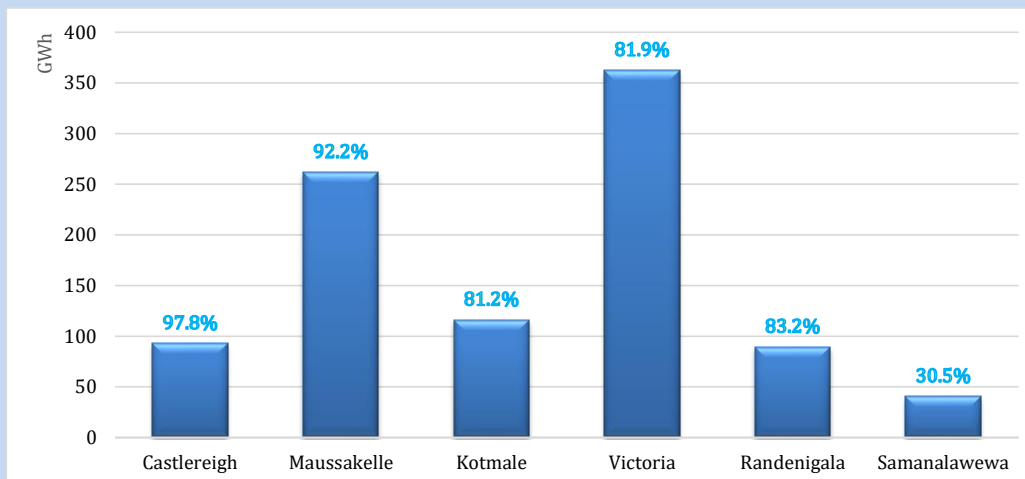
October 16, 2022



Night Peak*	1,858.7 MW
Day Peak	1,254.1 MW
Minimum Demand	938.9 MW

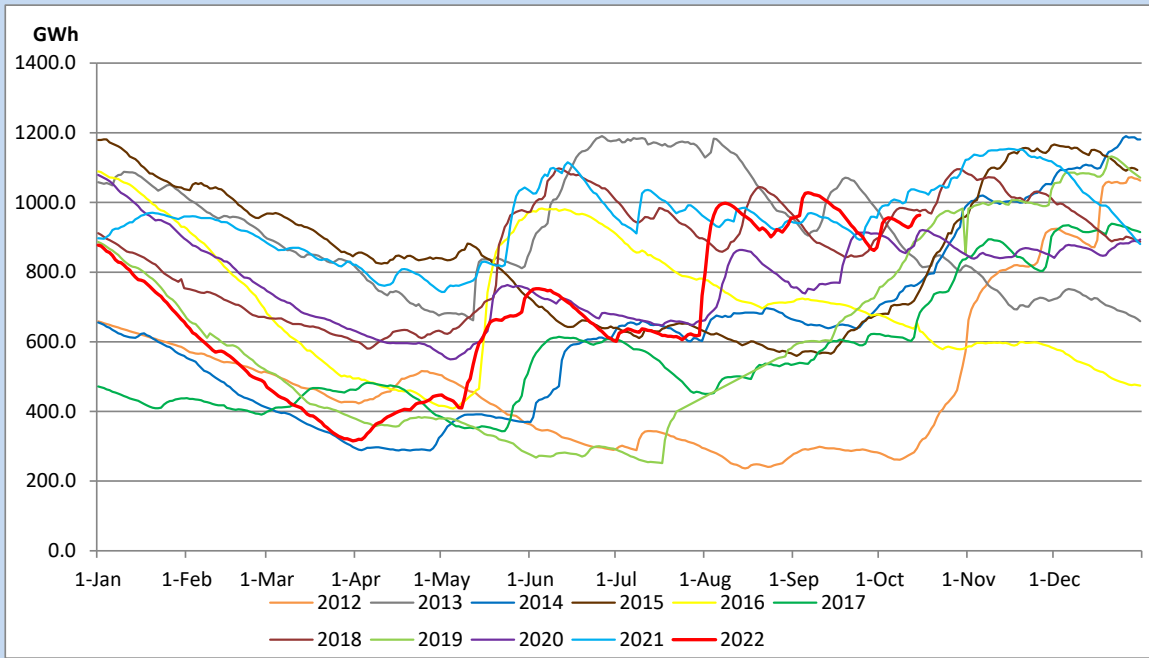
Above figures are excluding contribution from Roof Top Solar, 1MW solar, certain Wind plants and Mini Hydro plants

Reservoir Levels - as at 06.00 Hr on October 17, 2022

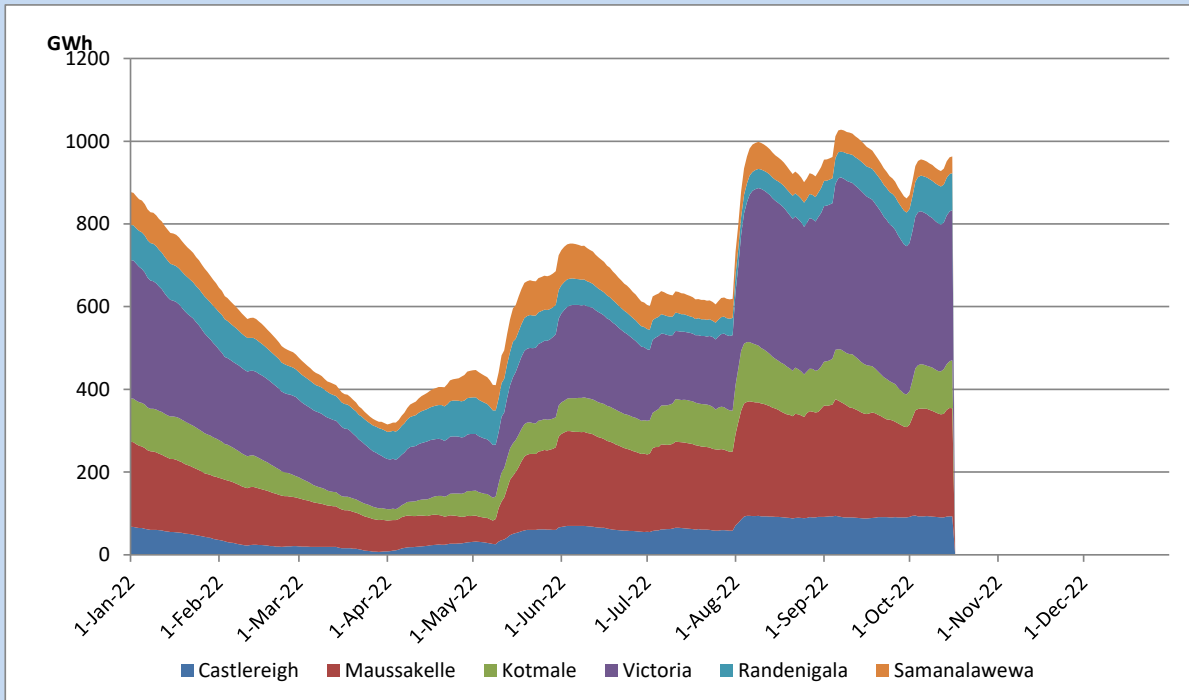


Total Reservoir Level	963.4 GWh
% of Total capacity	79.9%

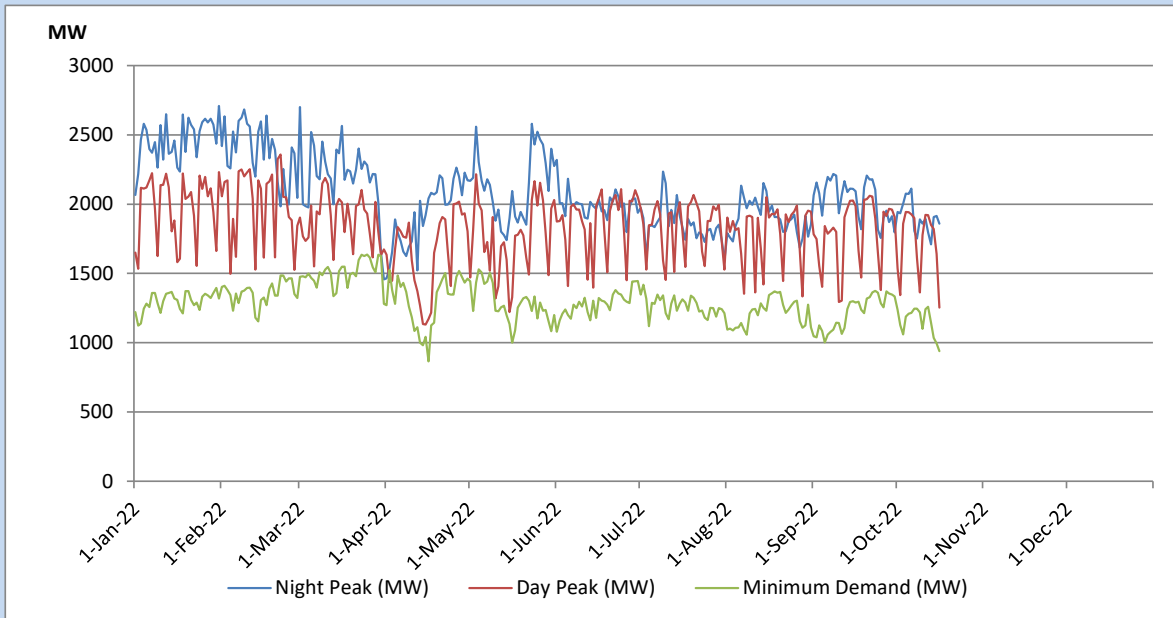
Comparison of Total Reservoir Storage Levels with Past Years



Variation of Major Hydro Reservoir Levels in the current year (GWh)



Variation of Demand during the current year

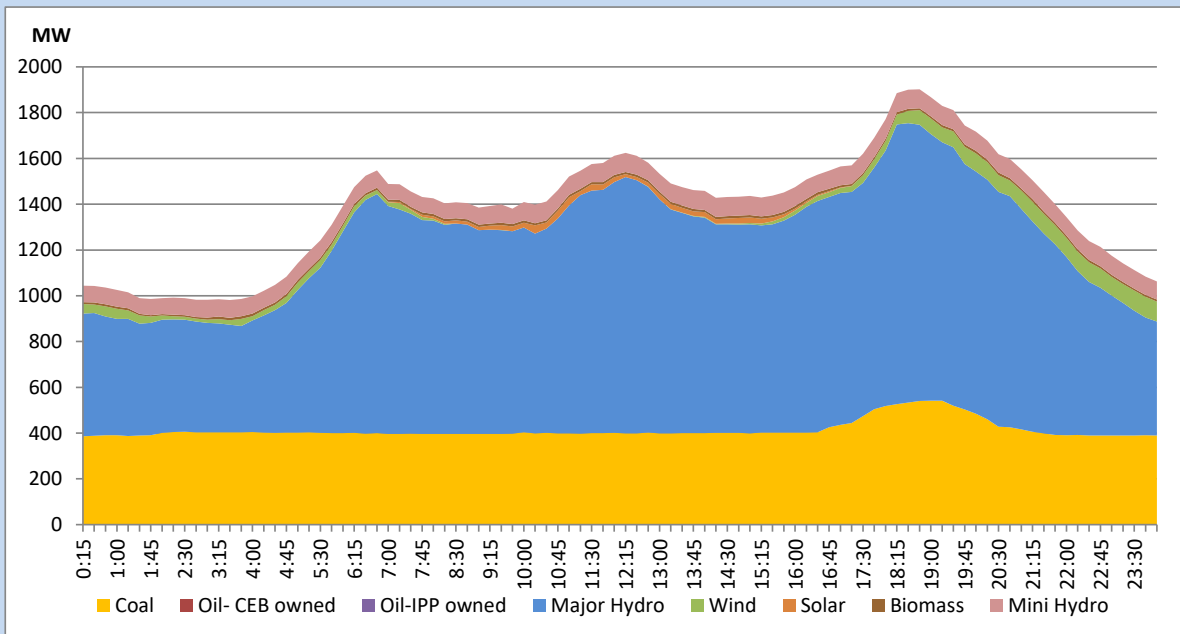


The above figures are excluding contribution from Roof Top Solar, 1MW solar, certain Wind plants and Mini Hydro plants

Daily Load Curve of the Previous day

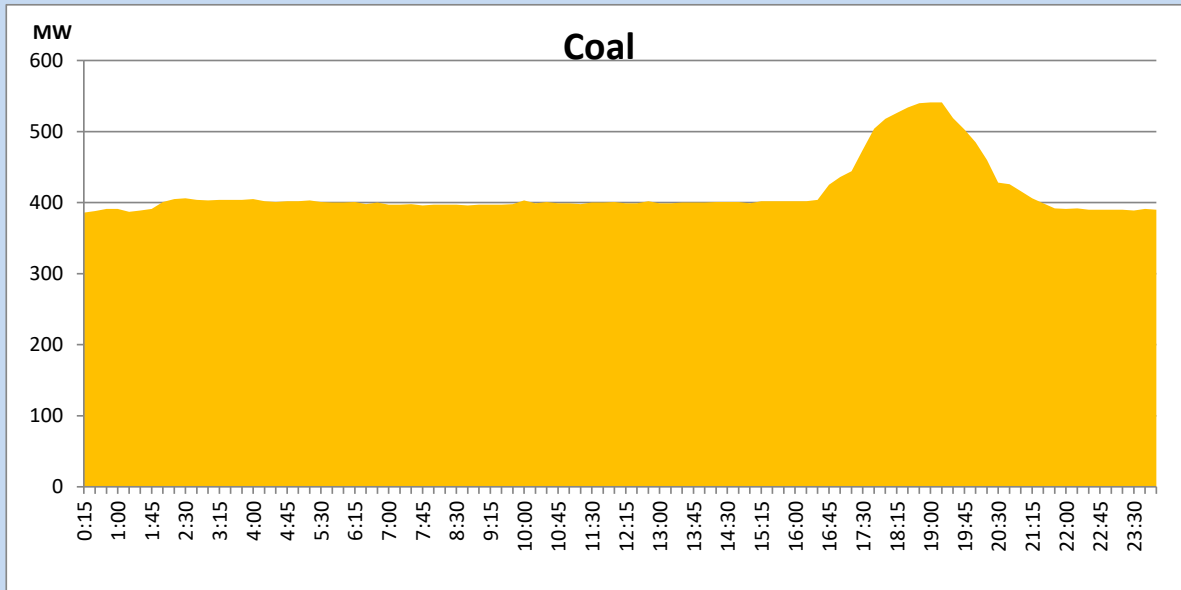
October 15, 2022

Solar and wind data is based on Telemetered Power Stations only



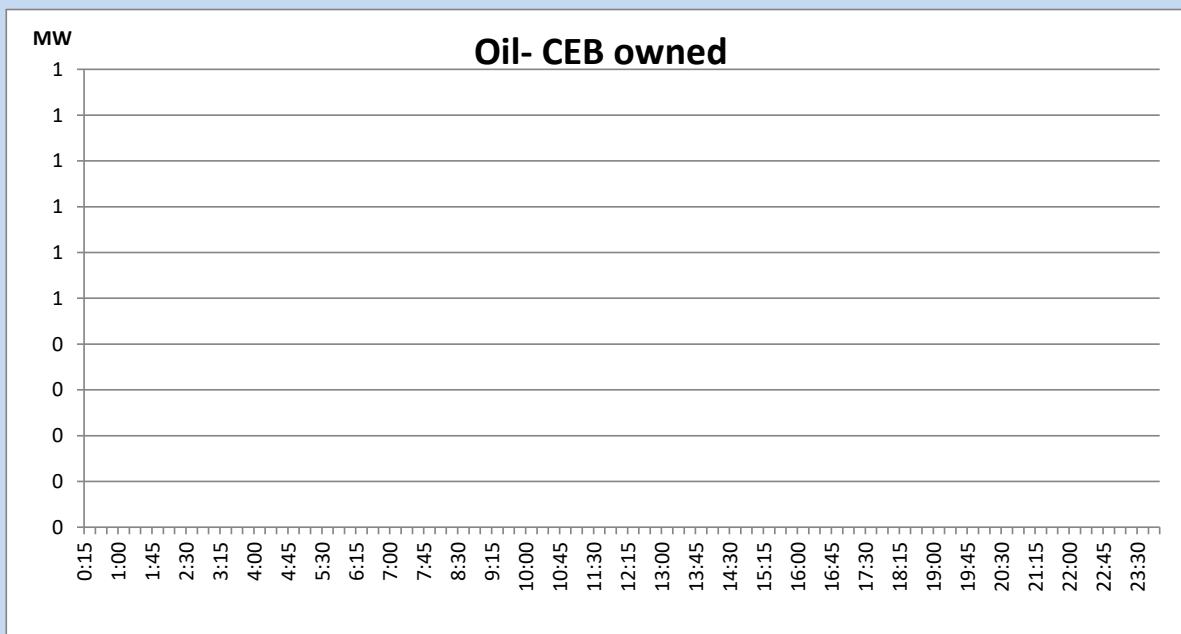
Coal Generation during the Previous day

October 15, 2022



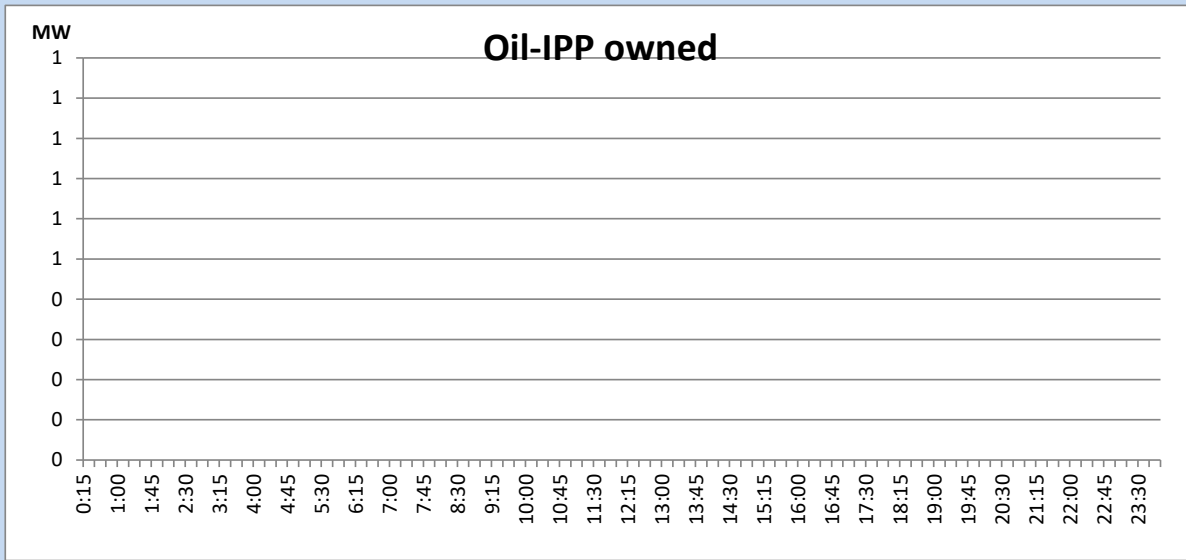
CEB Oil Plant Generation during the Previous day

October 15, 2022



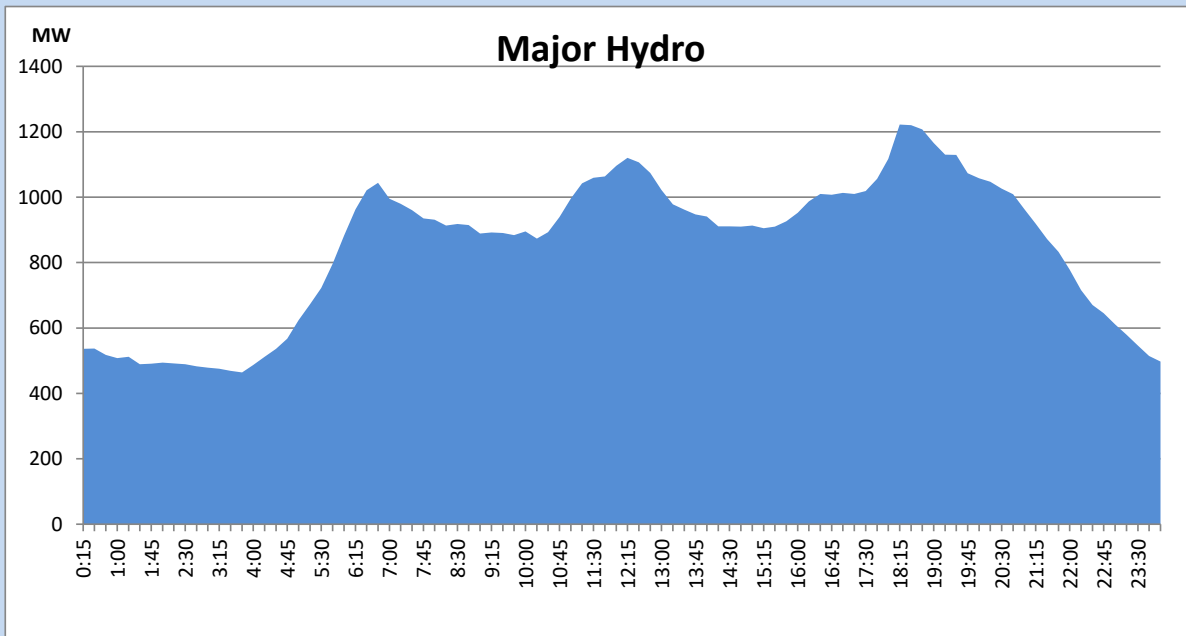
IPP Oil Plant Generation during the Previous day

October 15, 2022



Major Hydro Generation during the Previous day

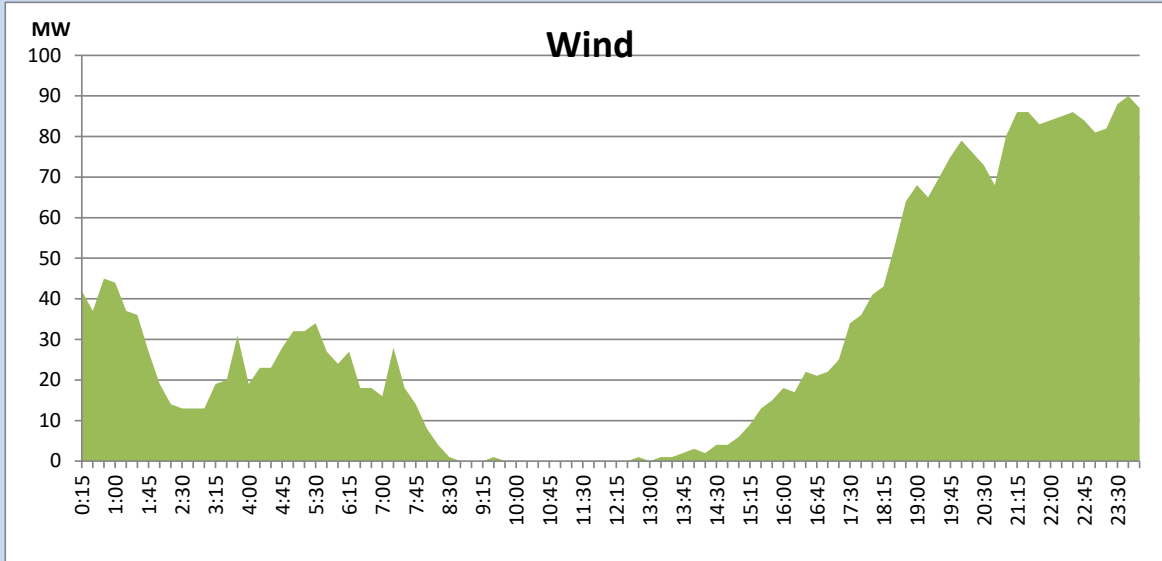
October 15, 2022



Wind Generation during the Previous day

October 15, 2022

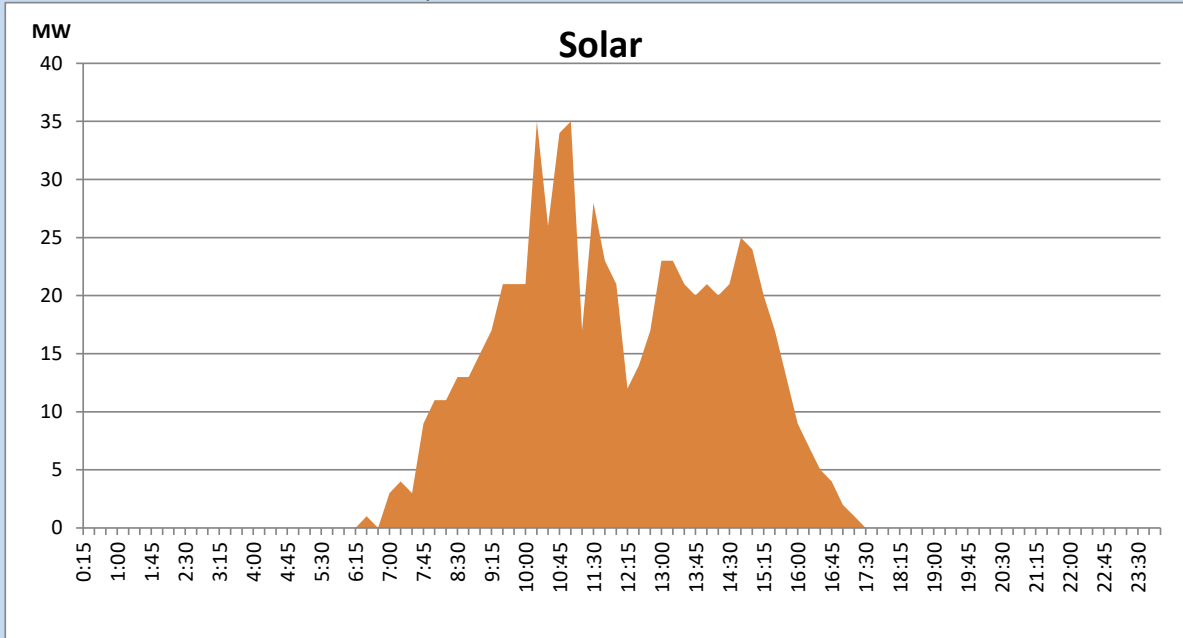
Based on Telemetered Power Stations only



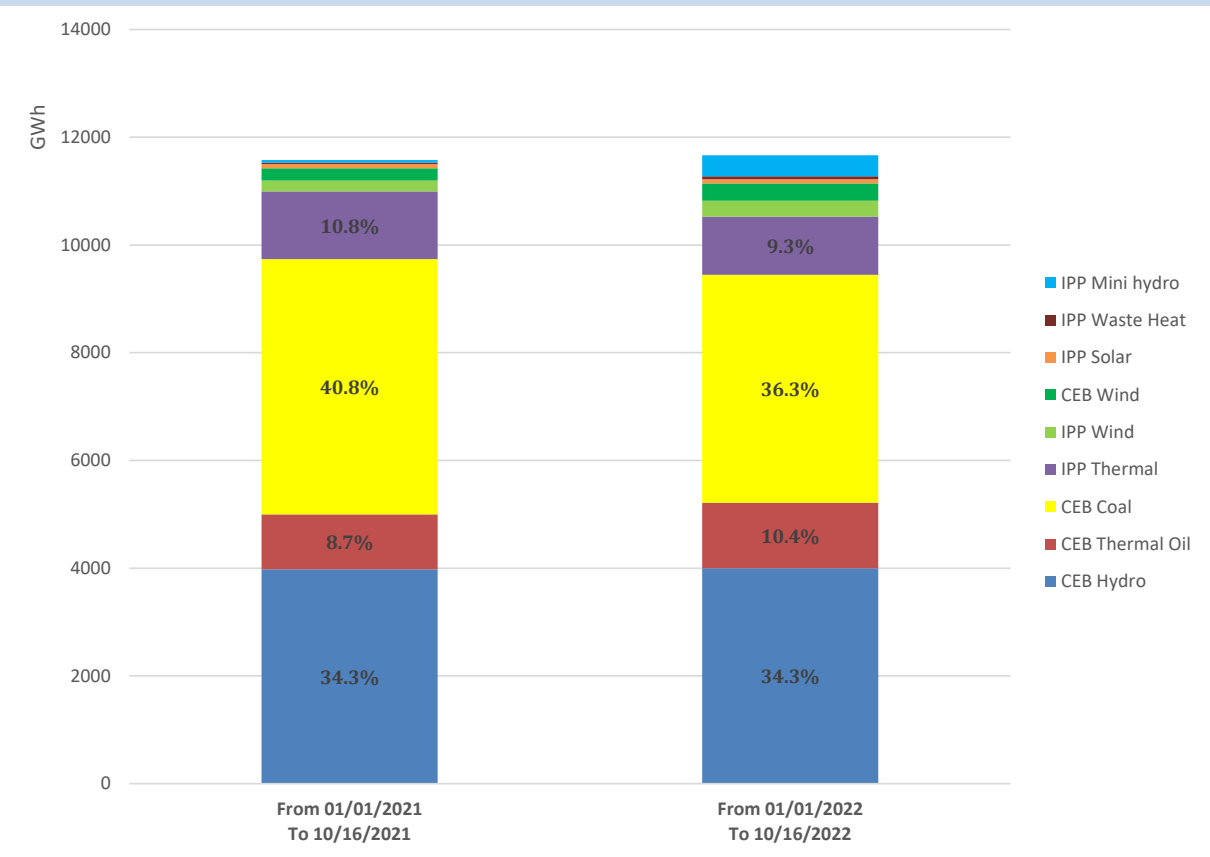
Solar Generation during the Previous day

October 15, 2022

Based on Telemetered Power Stations only



Cumulative Dispatch Comparison with Last Year



Thermal Plant Fuel types

Power Station	Primary Fuel
CEB Thermal	
Sapugaskanda 1	Heavy Fuel
Sapugaskanda 2	Heavy Fuel
Kelanitissa Small Gas Turbines	Auto Diesel
GT 7 - Kelanitissa	Auto Diesel
Kelanitissa CCY	Naphtha or Diesel
Lakvijaya 1	Coal
Lakvijaya 2	Coal
Lakvijaya 3	Coal
Uthuru Janani	Heavy Fuel
Barge CEB	Heavy Fuel

Power Station	Primary Fuel
Private Thermal	
Sojitz - Kelanitissa	Auto Diesel
West Coast	Auto Diesel / Heavy Fuel
ACE Matara	Heavy Fuel
ACE Embilipitiya	Heavy Fuel

Major Incidents during the day -as reported by CEB morning of

October 17, 2022

- 1) Manual load shedding carried out from 18:20hrs to 19:40hrs.
- 2) Norton pond spilling stopped at 8:45hrs.
- 3) Hambantota 132/33kV T/F 03 tripped at 10:10hrs due to the operation of LVREF protection. T/F 03 normalized at 10:24hrs.
- 4) UFSL Stage I operated at 15:21hrs due to tripping of MHP feeders. All affected feeders were normalized by 15:33hrs.
- 5) Kukule spilling continues to the present hour.
- 6) LVPS Unit 3 deloaded to 130MW(net) at 18:21hrs due to FD fan failure. Unit 03 made available for loading at 21:15hrs.