

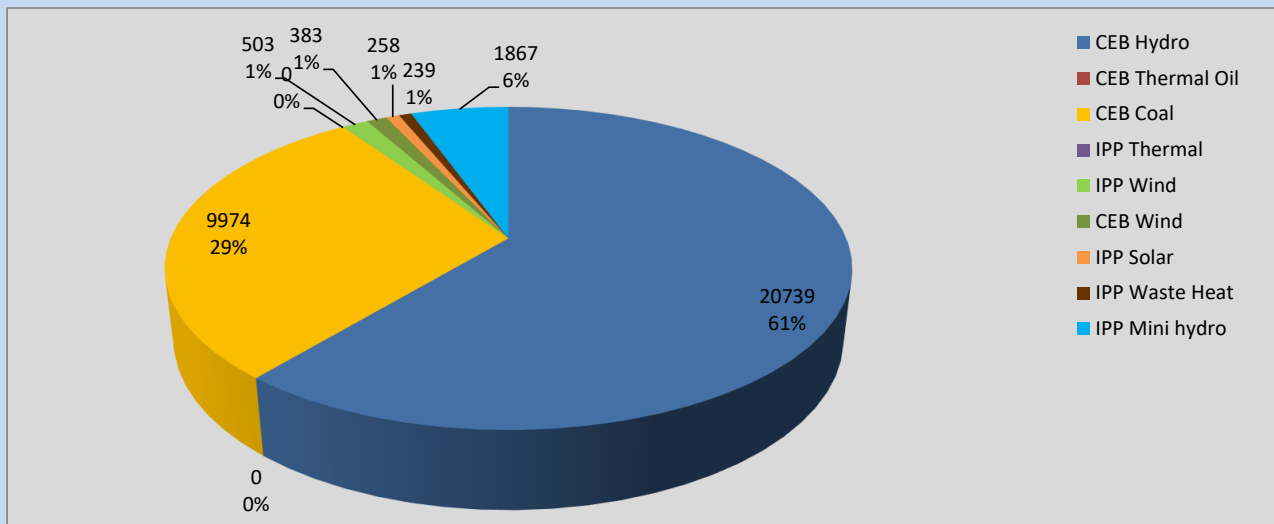
# Generation and Reservoirs Statistics

October 15, 2022



PUBLIC UTILITIES COMMISSION OF SRI LANKA

## Daily Generation Mix in MWh



**Total Generation** **33,963 MWh**

Note: Above data is excluding contribution from Roof Top Solar, 1MW Solar and certain Mini Hydro plants

## Cumulative Dispatch

Note: Following data is Excluding contribution from Roof Top Solar, 1MW solar and Mini Hydro plants

### For Current Month

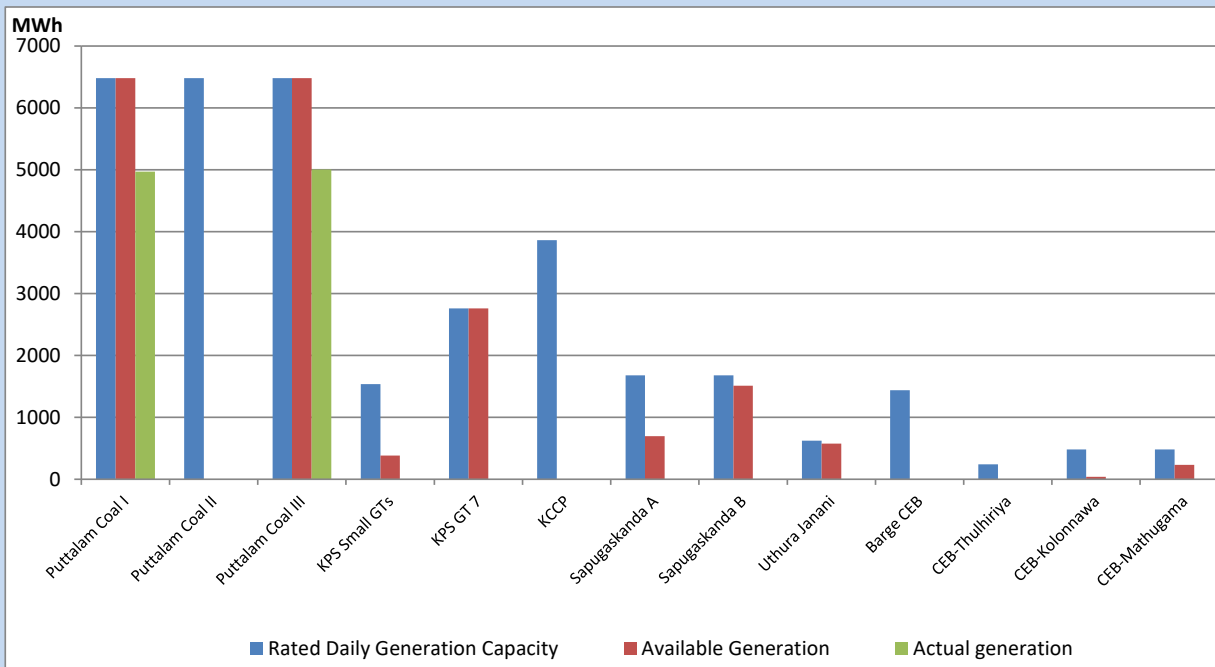
Category	Dispatch (GWh)	Percentage
CEB Hydro	279.57	49.63%
CEB Thermal Oil	38.12	6.77%
CEB Coal	182.01	32.31%
IPP Thermal	7.12	1.26%
SPP Wind	13.69	2.43%
CEB Wind	13.02	2.31%
SPP Solar	4.16	0.74%
SPP Solid Waste	2.36	0.42%
Mini Hydro	23.27	4.13%
<b>Total</b>	<b>563.32</b>	

### For Current Year

Category	Dispatch (GWh)	Percentage
CEB Hydro	3,979.8	34.21%
CEB Thermal Oil	1,216.8	10.46%
CEB Coal	4,223.2	36.30%
IPP Thermal	1,082.9	9.31%
SPP Wind	294.7	2.53%
CEB Wind	319.1	2.74%
SPP Solar	75.5	0.65%
SPP Solid Waste	57.2	0.49%
Mini Hydro	383.8	3.30%
<b>Total</b>	<b>11,632.6</b>	

## CEB owned Thermal Plant Dispatch

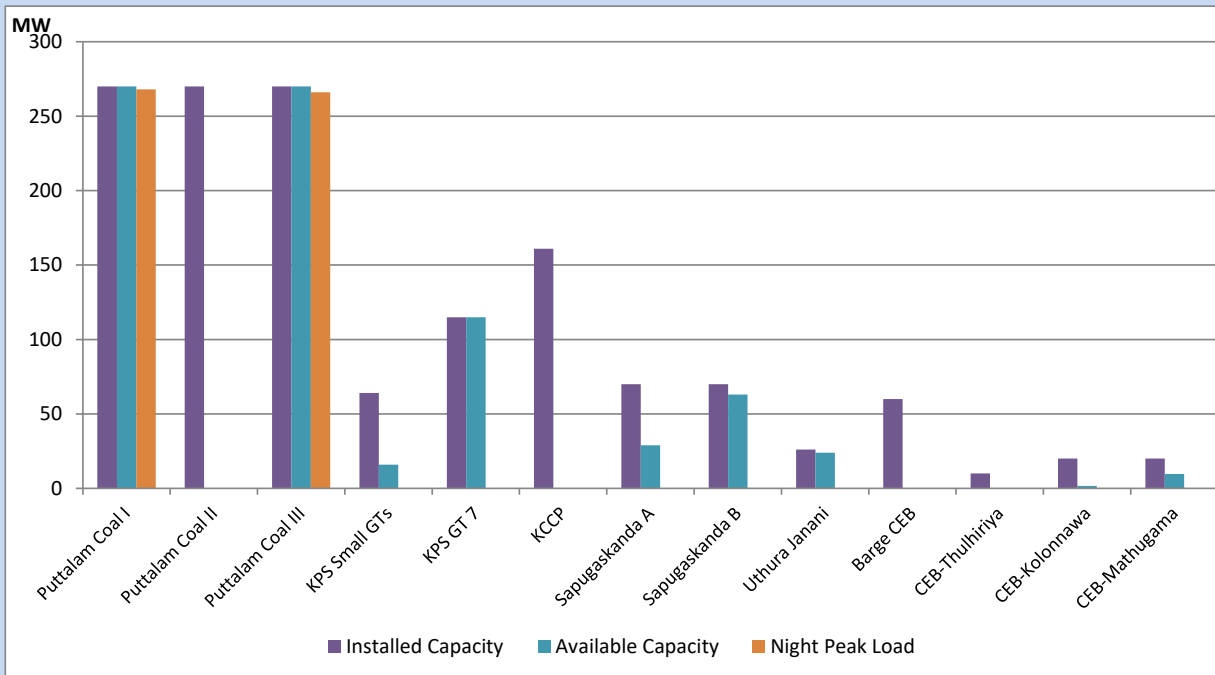
October 15, 2022



Available Generation is estimated based on plant availability at 6.00am on

October 16, 2022

## CEB owned Thermal Plant Loading at the Night Peak



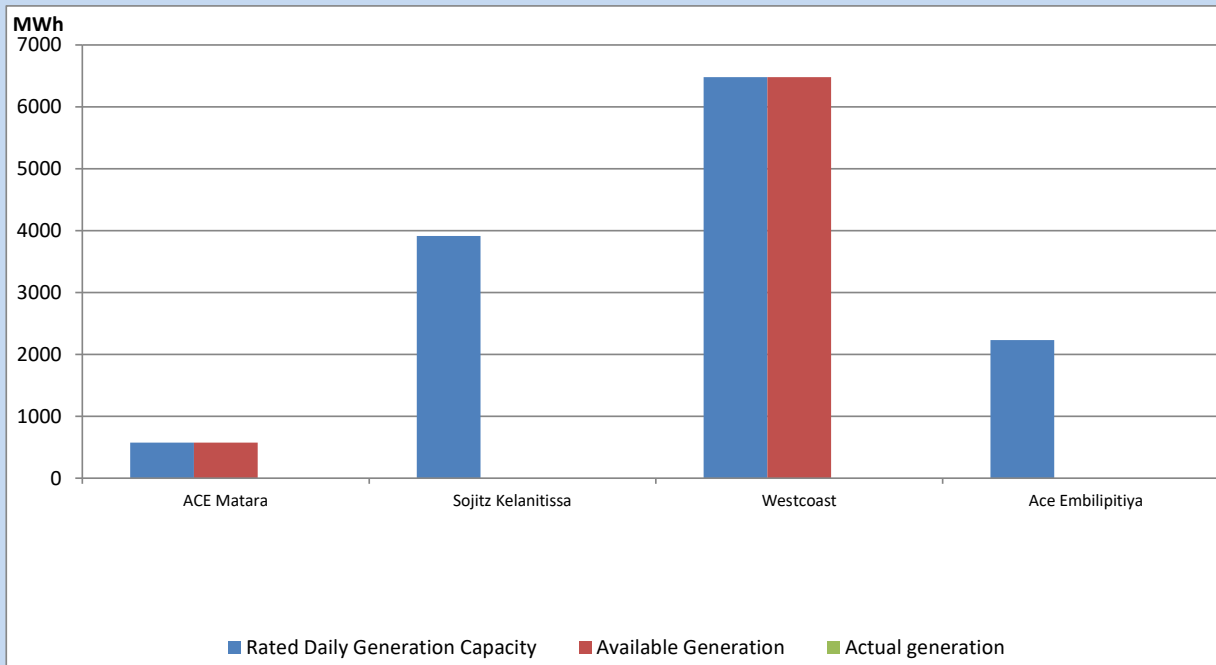
Note- Plant availability is recorded at 6.00 am on

October 16, 2022

## IPP owned Thermal Plant Dispatch

October 15, 2022

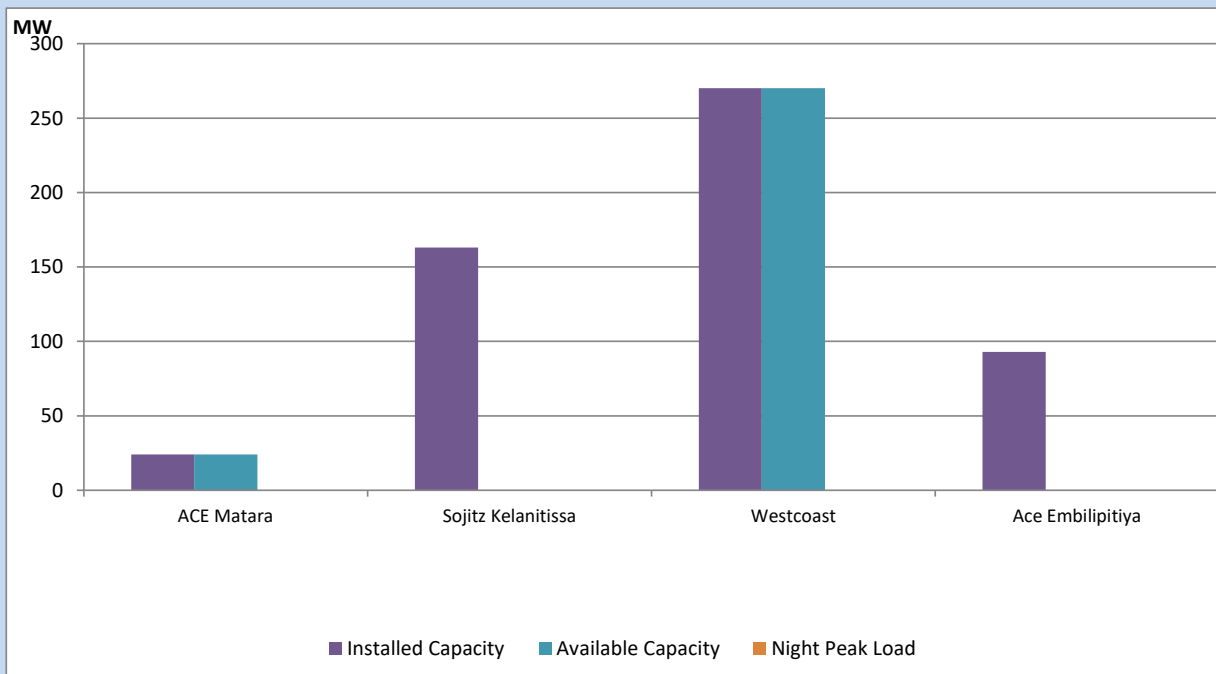
Asia Power, V Power Pallekale, Vpower Galle, V Power Horana, Vpower Hambantota, Vpower Valachchena and Altaqa Mahiyanganaya are not available due to expiration of PPAs



Available Generation is estimated based on plant availability at 6.00am on

October 16, 2022

## IPP owned Thermal Plant Loading at the Night Peak

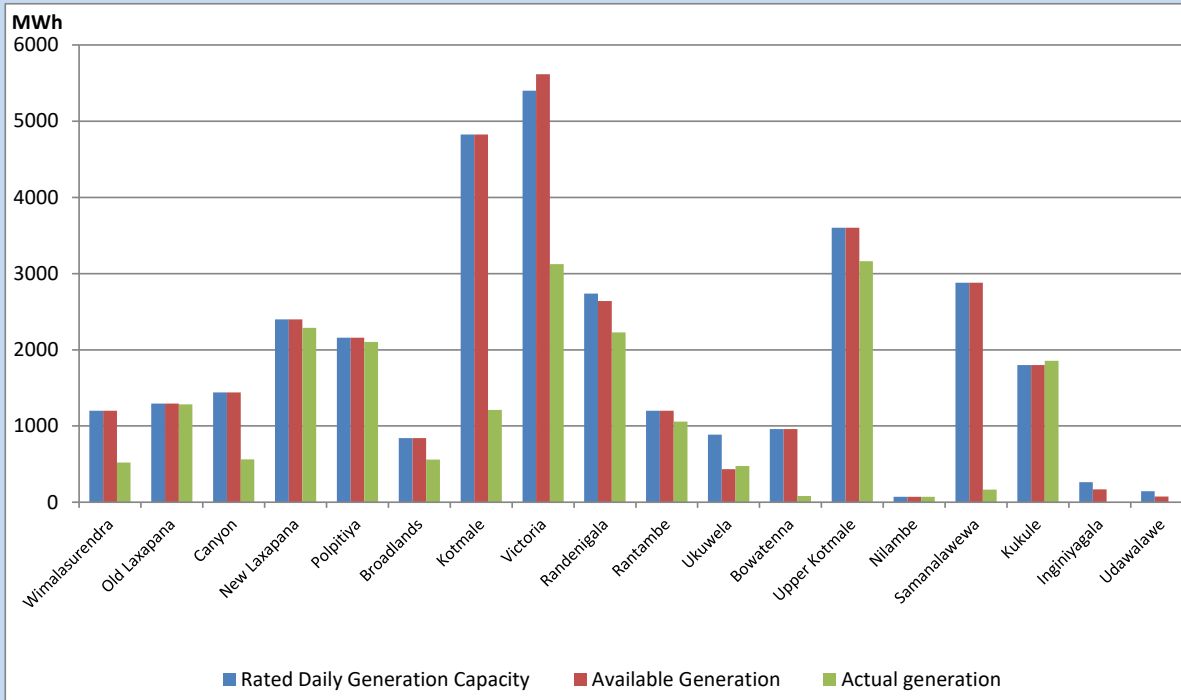


Note- Plant availability is recorded at 6.00 am on

October 16, 2022

## Major Hydro Plant Dispatch

October 15, 2022

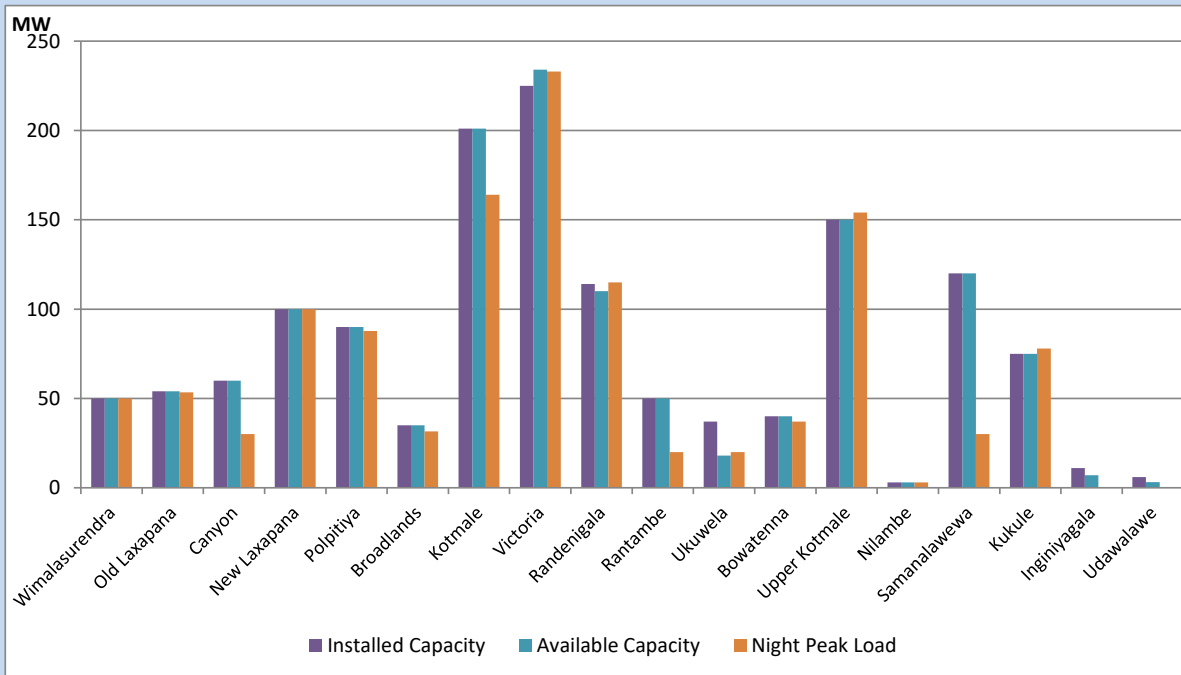


Available Generation is estimated based on plant availability at 6.00am on  
Broadlands power plant is operating in the Commissioning Stage

October 16, 2022

## Major Hydro Plant Loading at Night Peak

October 15, 2022



Note- Plant availability is recorded at 6.00 am on  
Broadlands power plant is operating in the Commissioning Stage

October 16, 2022

## Summary of Major Plant performance

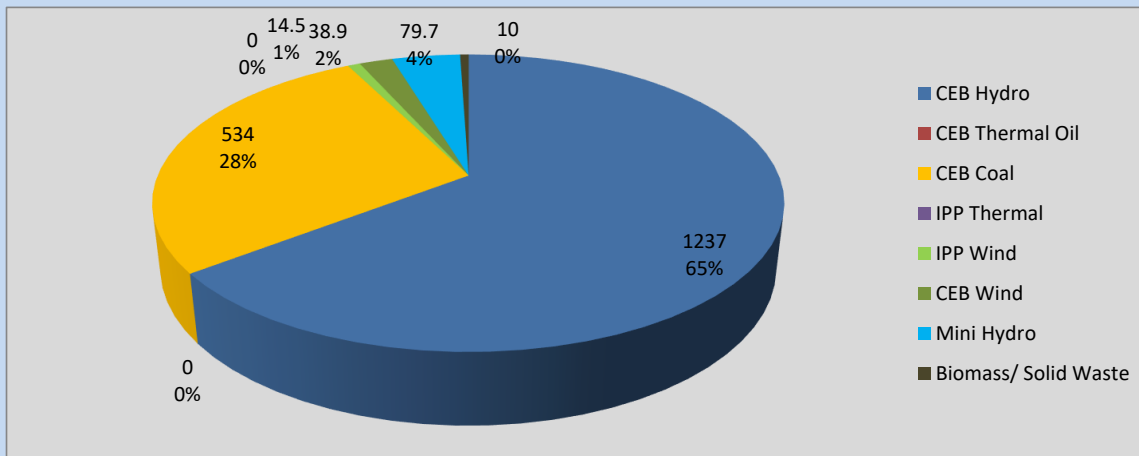
Plant	Installed Capacity	Plant Availability	Night peak Load	Plant Dispatch
	(MW)	(MW)	(MW)	(MWh)
Wimalasurendra	50	50	50	520
Old Laxapana	54	54	53	1,284
Canyon	60	60	30	563
New Laxapana	100	100	100	2,289
Polpitiya	90	90	88	2,102
Broadlands	35	35	32	558
Kotmale	201	201	164	1,210
Victoria	225	234	233	3,124
Randenigala	114	110	115	2,228
Rantambe	50	50	20	1,056
Ukuwela	37	18	20	474
Bowatenna	40	40	37	80
Upper Kotmale	150	150	154	3,161
Nilambe	3	3	3	72
Samanalawewa	120	120	30	164
Kukule	75	75	78	1,854
Inginiyagala	11	7	0	0
Udawalawe	6	3	0	0
Puttalam Coal I	270	270	268	4,969
Puttalam Coal II	270	0	0	0
Puttalam Coal III	270	270	266	5,005
KPS Small GTs	64	16	0	0
KPS GT 7	115	115	0	0
KCCP	161	0	0	0
Sapugaskanda A	70	29	0	0
Sapugaskanda B	70	63	0	0
Uthura Janani	26	24	0	0
Barge CEB	60	0	0	0
CEB-Thulhiriya	10	0	0	0
CEB-Kolonnawa	20	2	0	0
CEB-Mathugama	20	10	0	0
ACE Matara	24	24	0	0
Sojitz Kelanitissa	163	0	0	0
West Coast	270	270	0	0
ACE Embilipitiya	93	0	0	0
<b>Total</b>	<b>3,397</b>	<b>2,492</b>	<b>1,884</b>	<b>33,963</b>

Plant availability is the availability recorded at 6 am on

October 16, 2022

## Contribution to the Night Peak in MW

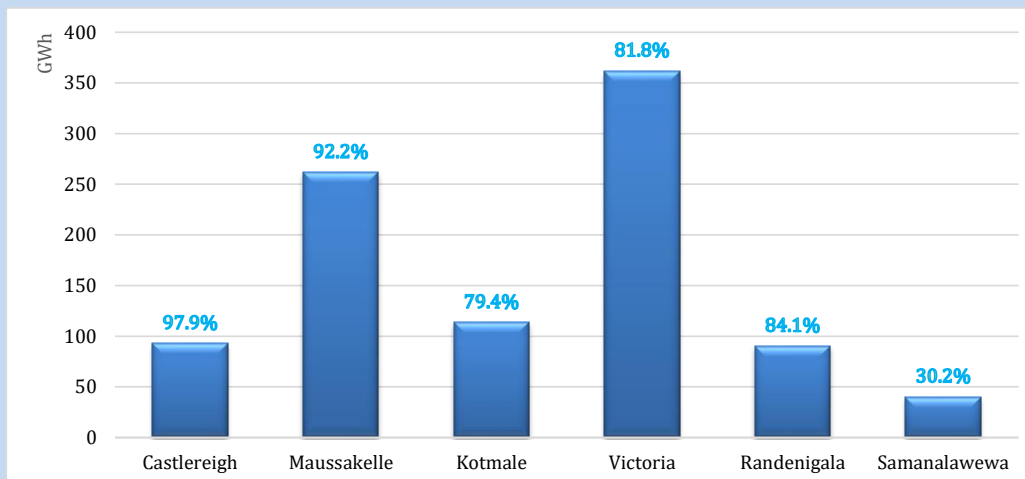
October 15, 2022



Night Peak*	1,913.8 MW
Day Peak	1,640.8 MW
Minimum Demand	994.2 MW

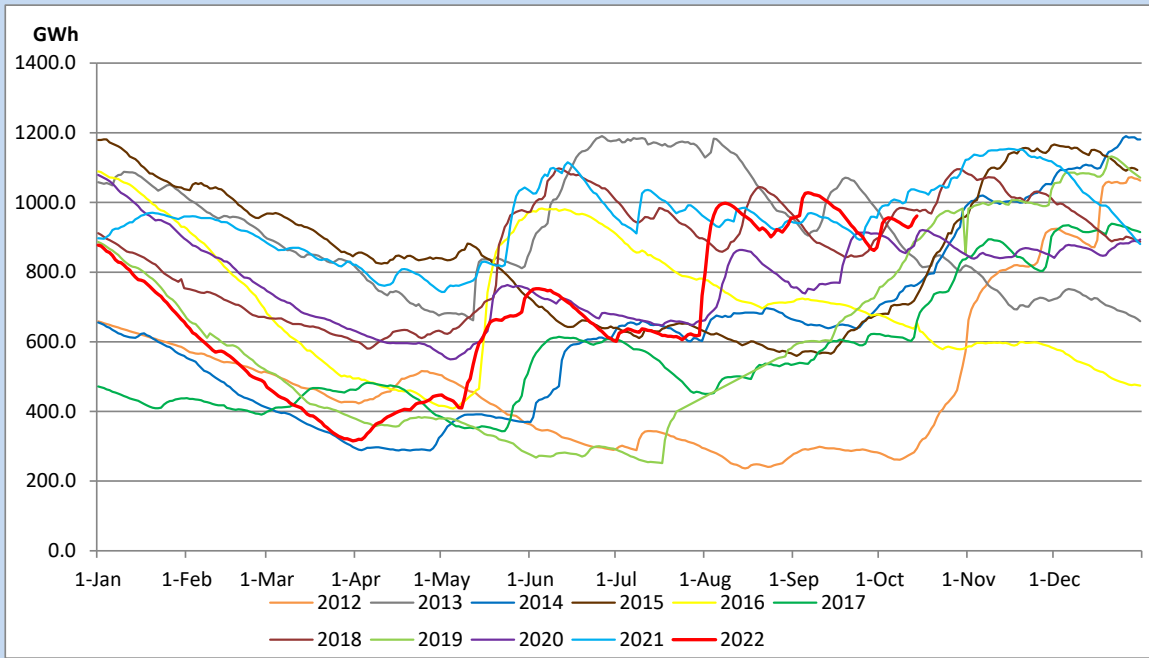
Above figures are excluding contribution from Roof Top Solar, 1MW solar, certain Wind plants and Mini Hydro plants

## Reservoir Levels - as at 06.00 Hr on October 16, 2022

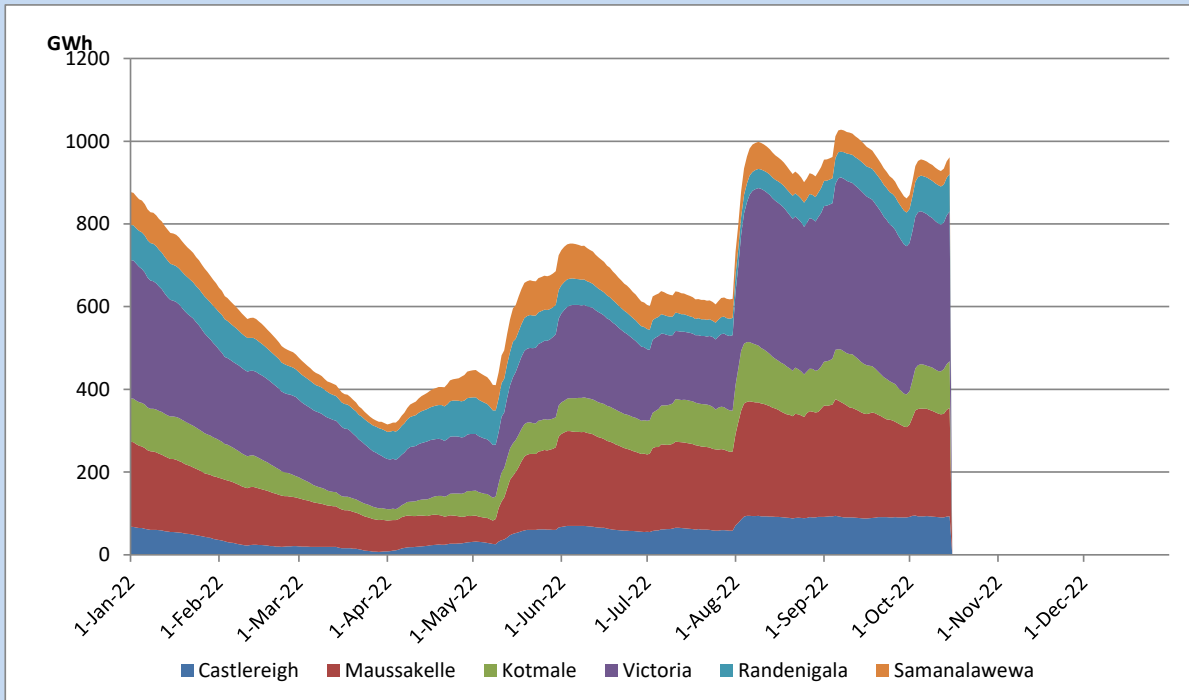


Total Reservoir Level	961 GWh
% of Total capacity	79.7%

## Comparison of Total Reservoir Storage Levels with Past Years

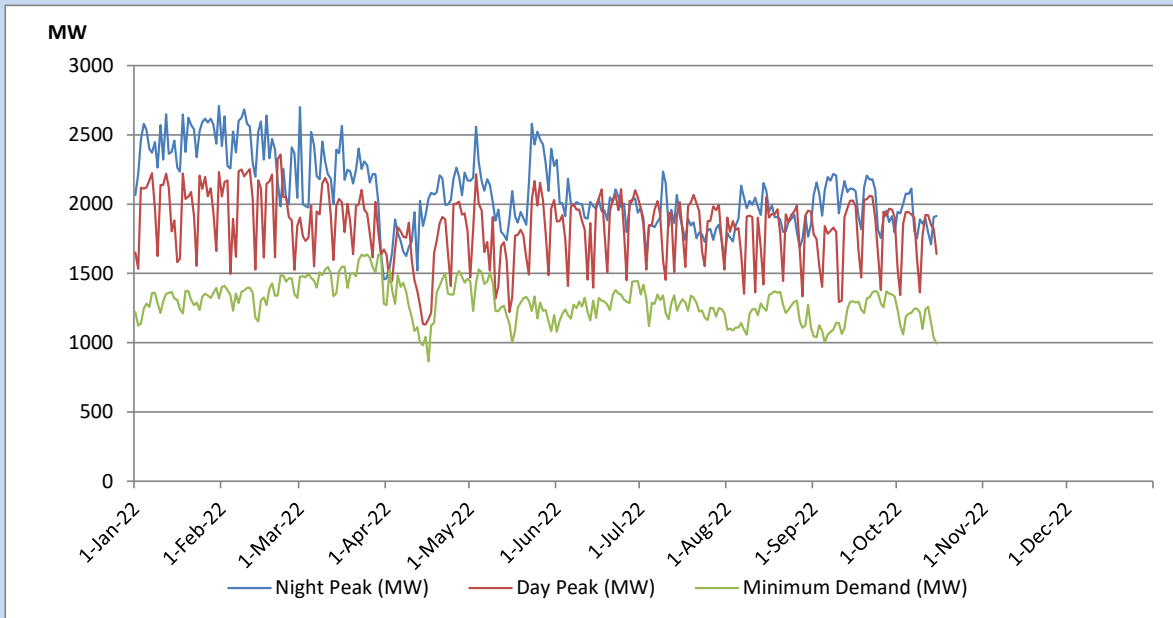


## Variation of Major Hydro Reservoir Levels in the current year (GWh)





## Variation of Demand during the current year

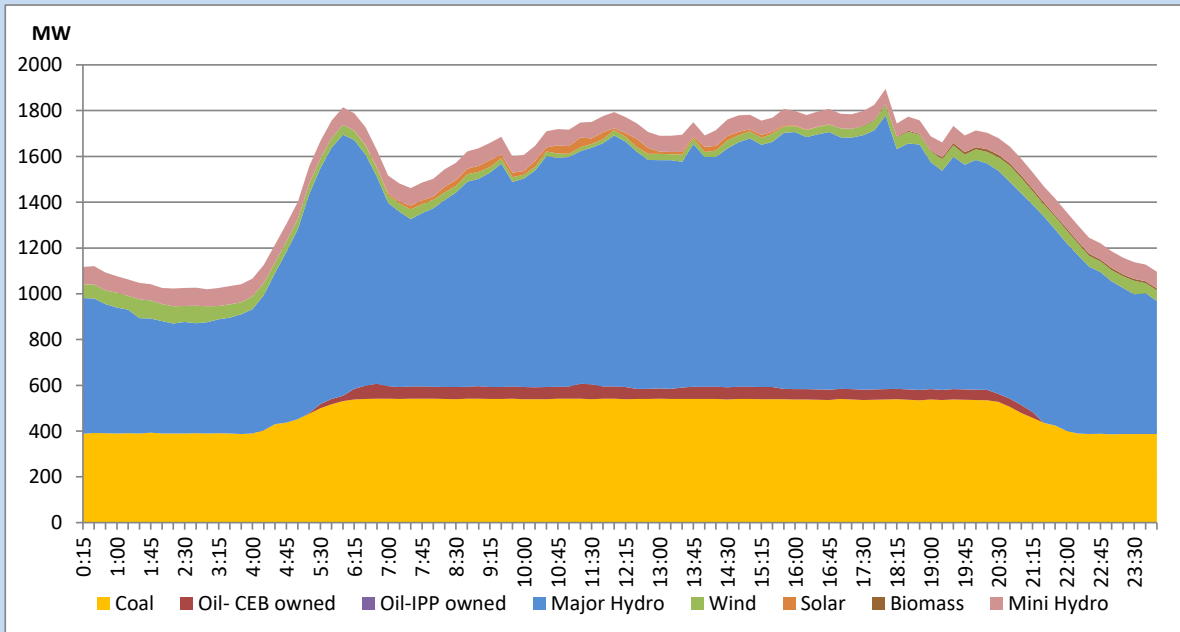


The above figures are excluding contribution from Roof Top Solar, 1MW solar, certain Wind plants and Mini Hydro plants

## Daily Load Curve of the Previous day

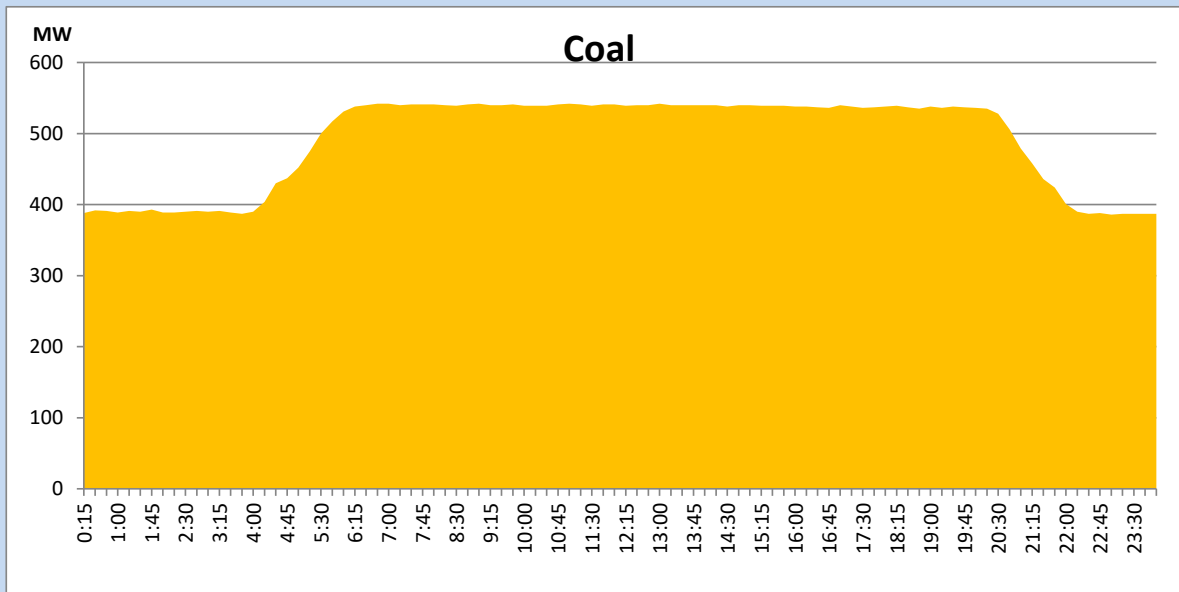
October 14, 2022

Solar and wind data is based on Telemetered Power Stations only



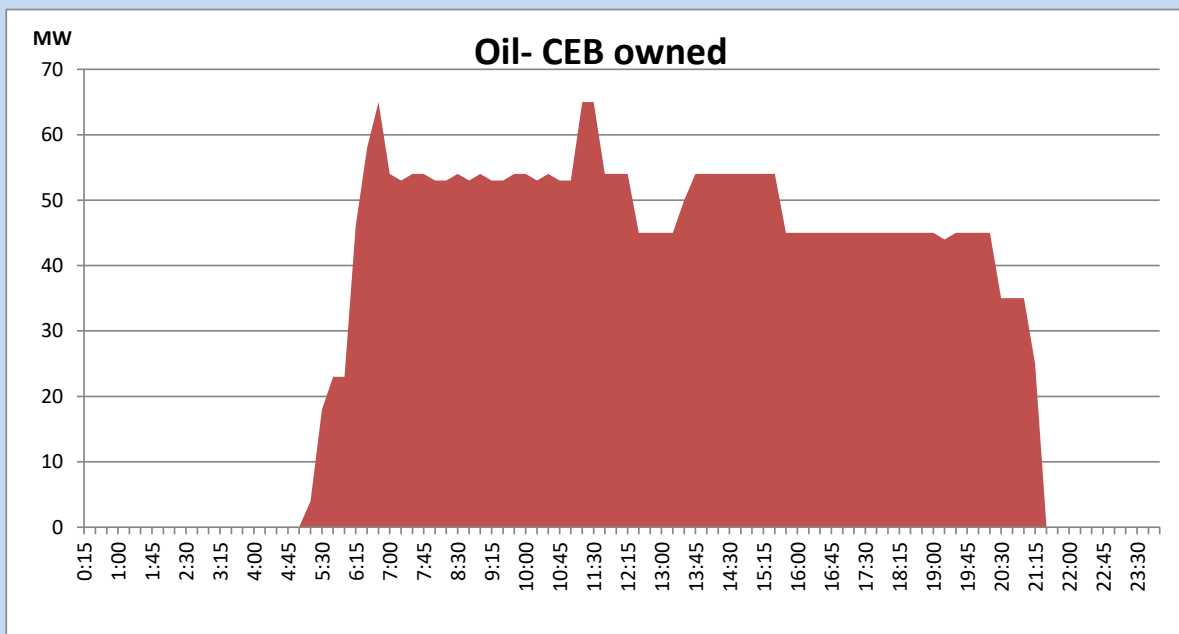
## Coal Generation during the Previous day

October 14, 2022



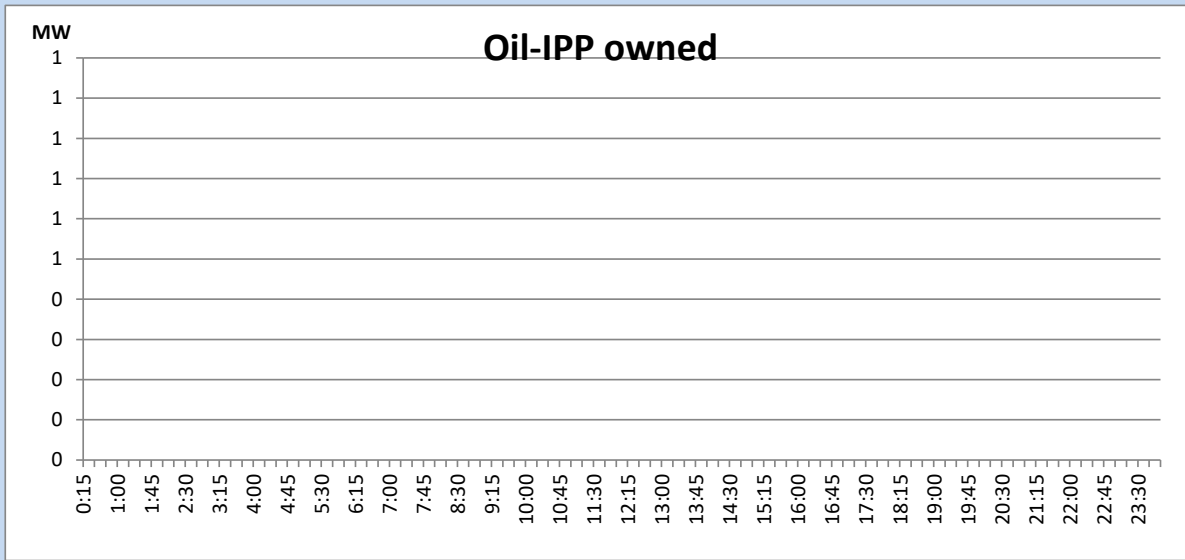
## CEB Oil Plant Generation during the Previous day

October 14, 2022



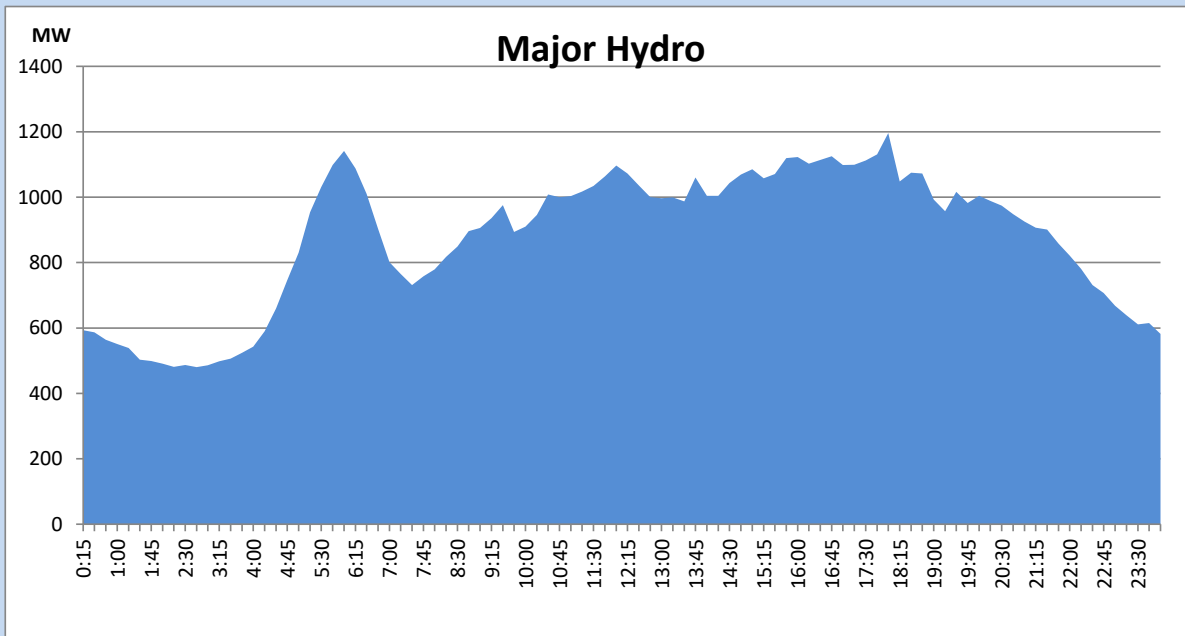
IPP Oil Plant Generation during the Previous day

October 14, 2022



Major Hydro Generation during the Previous day

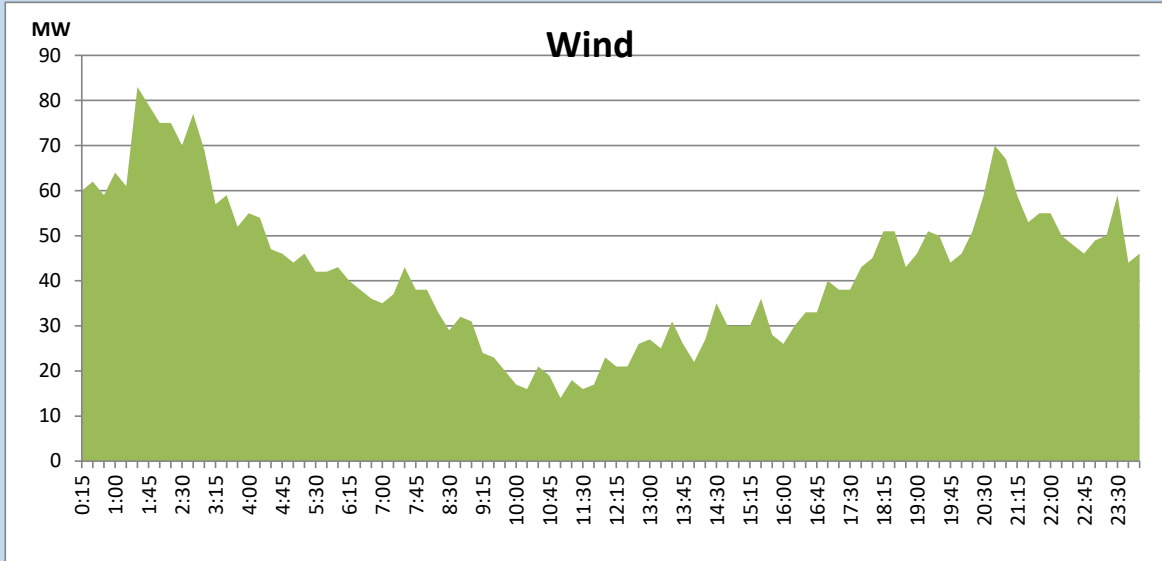
October 14, 2022



## Wind Generation during the Previous day

October 14, 2022

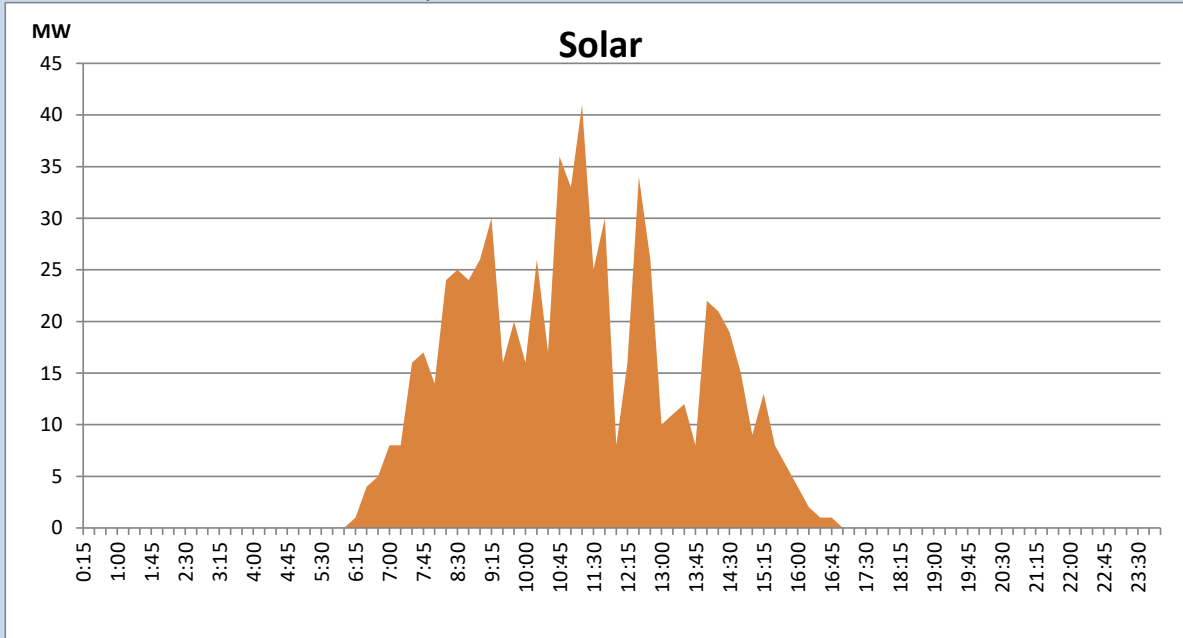
Based on Telemetered Power Stations only



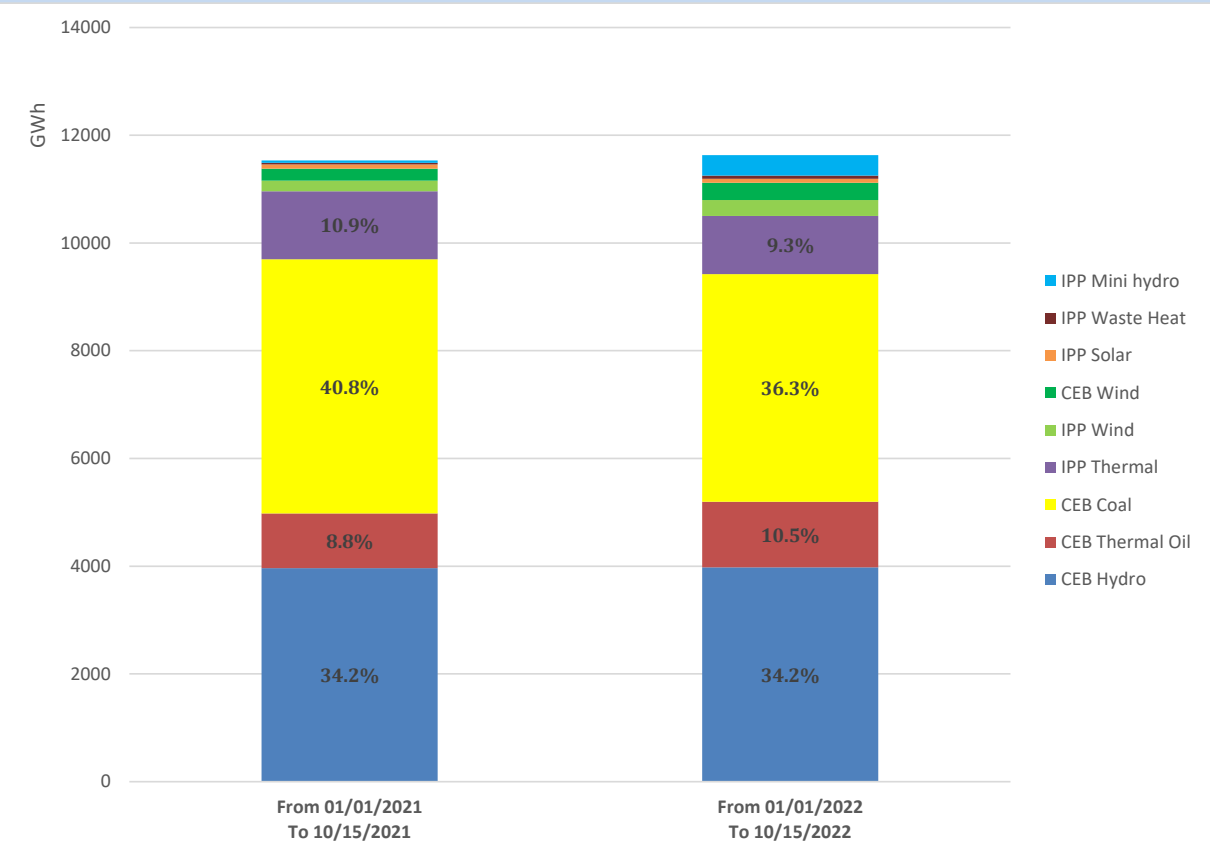
## Solar Generation during the Previous day

October 14, 2022

Based on Telemetered Power Stations only



# Cumulative Dispatch Comparison with Last Year



## Thermal Plant Fuel types

Power Station	Primary Fuel
CEB Thermal	
Sapugaskanda 1	Heavy Fuel
Sapugaskanda 2	Heavy Fuel
Kelanitissa Small Gas Turbines	Auto Diesel
GT 7 - Kelanitissa	Auto Diesel
Kelanitissa CCY	Naphtha or Diesel
Lakvijaya 1	Coal
Lakvijaya 2	Coal
Lakvijaya 3	Coal
Uthuru Janani	Heavy Fuel
Barge CEB	Heavy Fuel

Power Station	Primary Fuel
Private Thermal	
Sojitz - Kelanitissa	Auto Diesel
West Coast	Auto Diesel / Heavy Fuel
ACE Matara	Heavy Fuel
ACE Embilipitiya	Heavy Fuel

## Major Incidents during the day -as reported by CEB morning of

- 1) Laxapana pond spilled intermittently and stopped at 22:30hrs.
- 2) Norton pond spilling started at 19:31hrs and continues to the present hour.
- 3) Kukule spilling continues to the present hour.

October 16, 2022